

PHOTOS : BreezeMAX 2300 system Base station ODU

Model: BMAX-BST-AU-ODU-HP-2.3
FCC ID: LKT-BMAX-BA23



Photo1. Basic unit PCB open cover CS

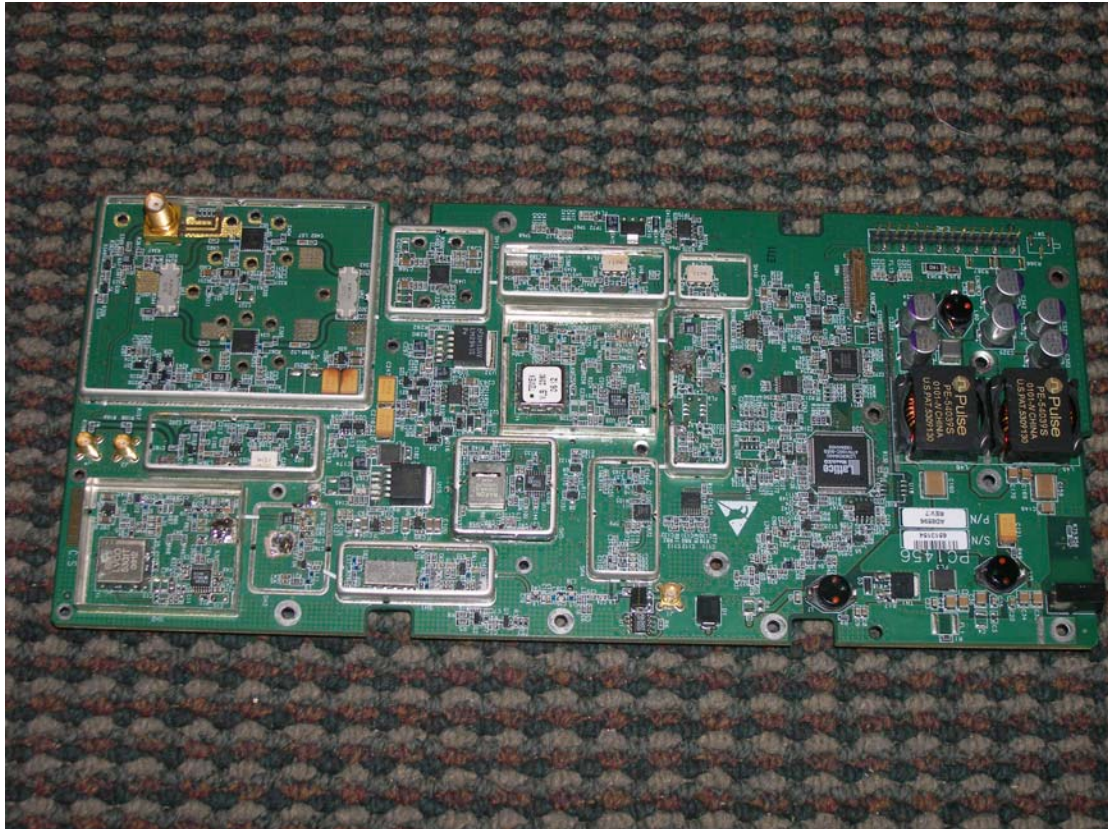


Photo2. Basic unit PCB CS

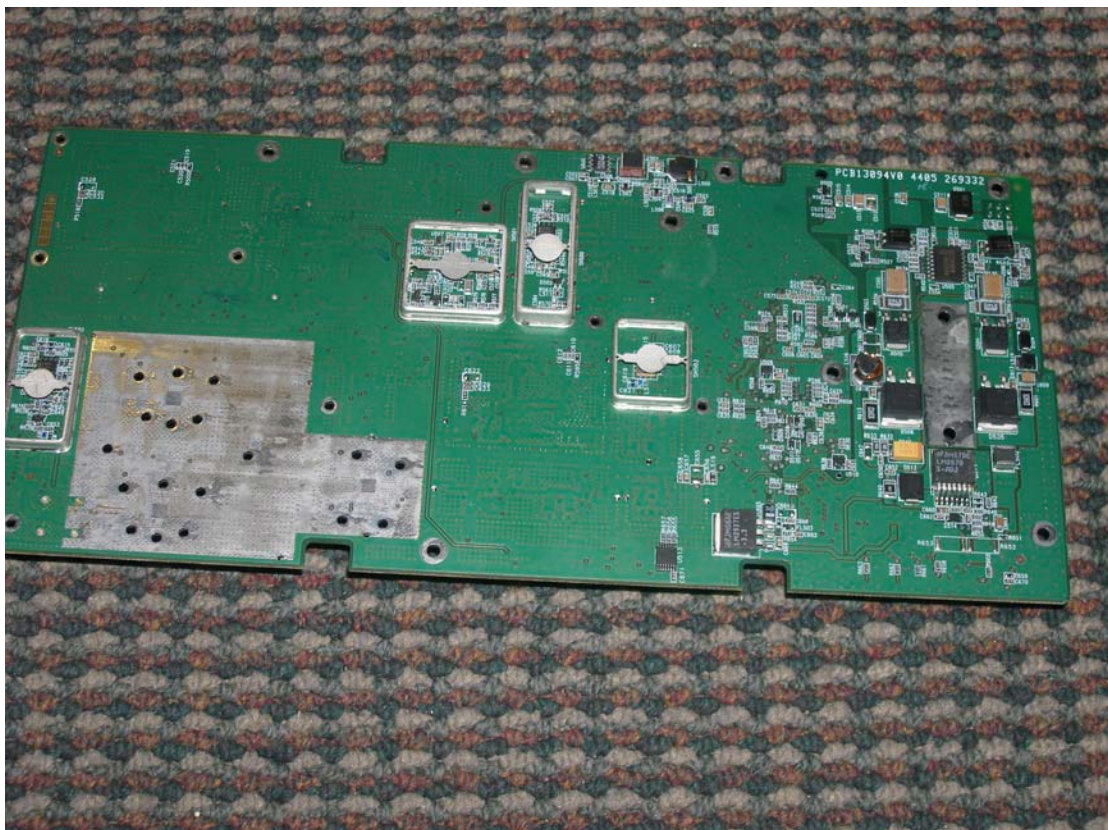


Photo3. Basic unit PCB PS

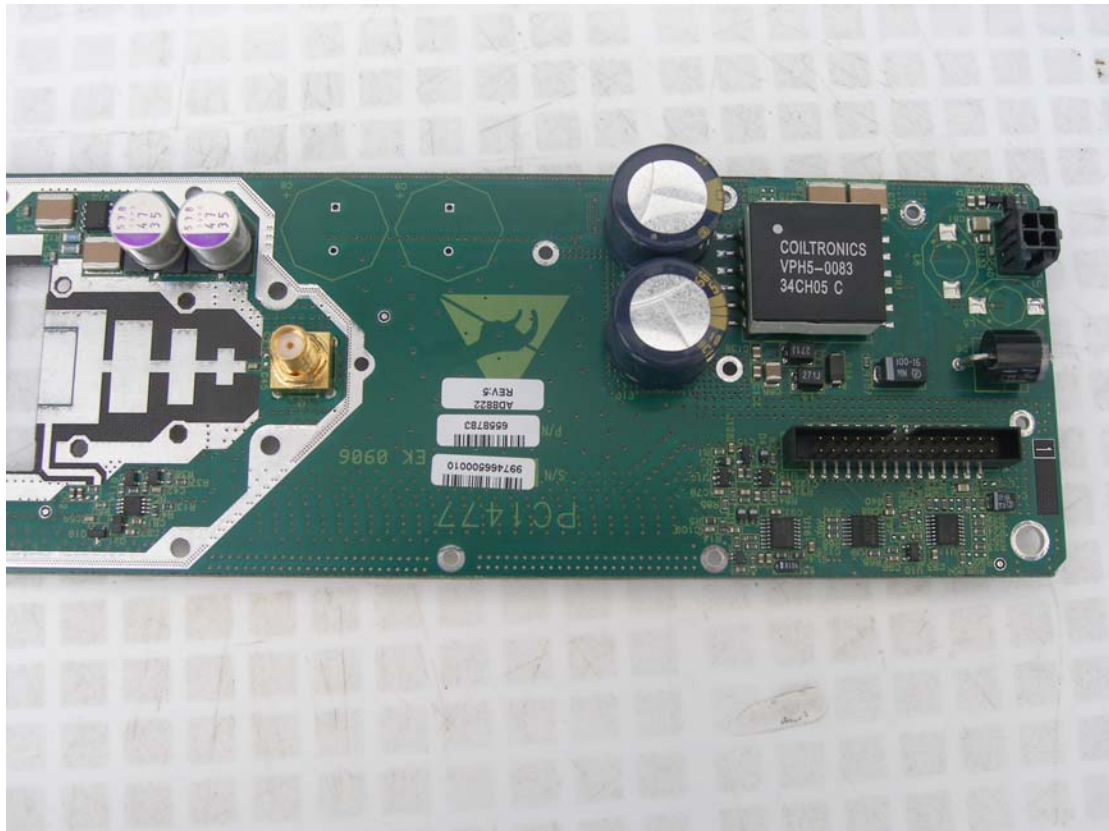


Photo4. Power amplifier PCB, CS.

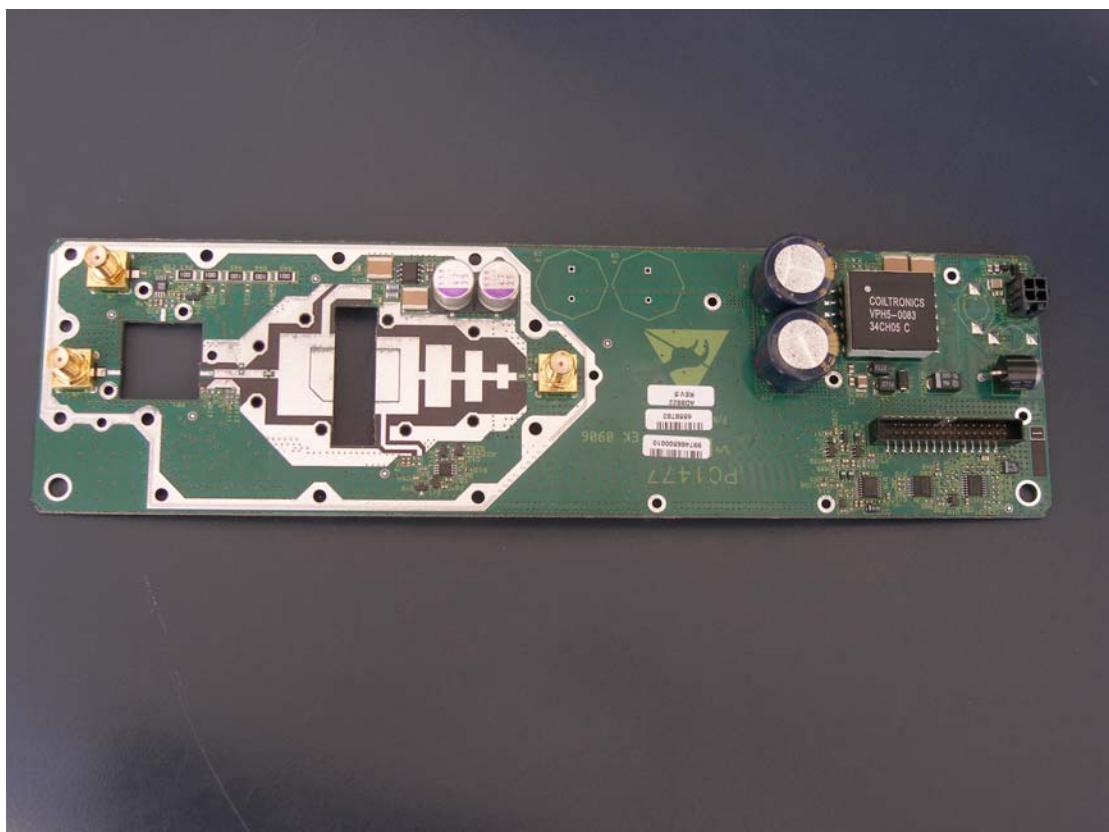


Photo5. Power amplifier PCB CS

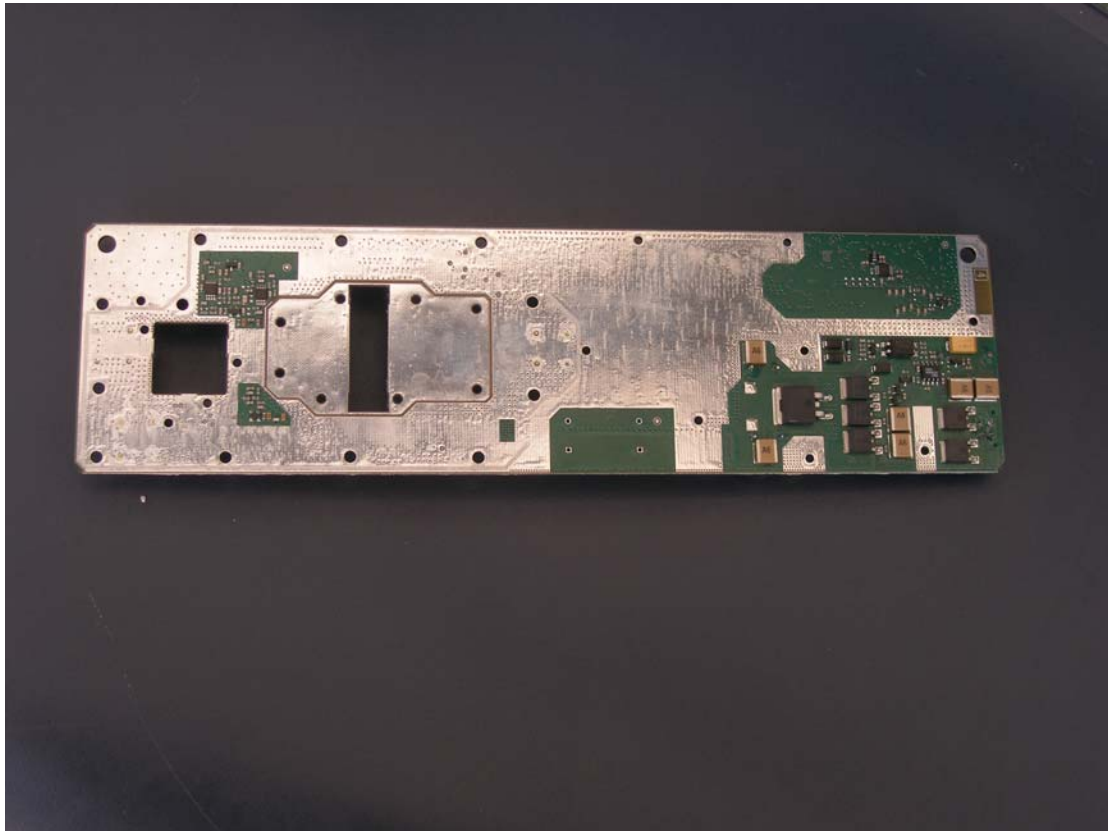


Photo6. Power amplifier PCB PS



Photo7 Power amplifier PCB , open cover CS

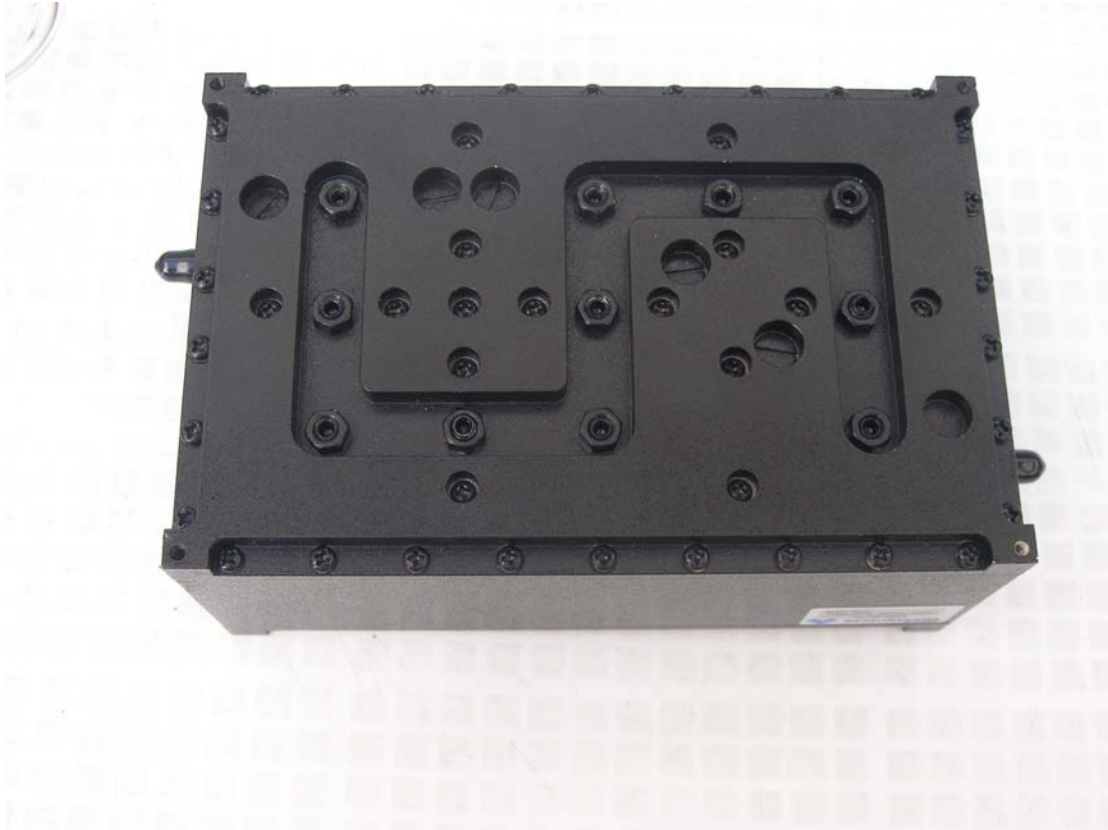


Photo 8. Cavity filter top view



Photo9. Cavity filter side view

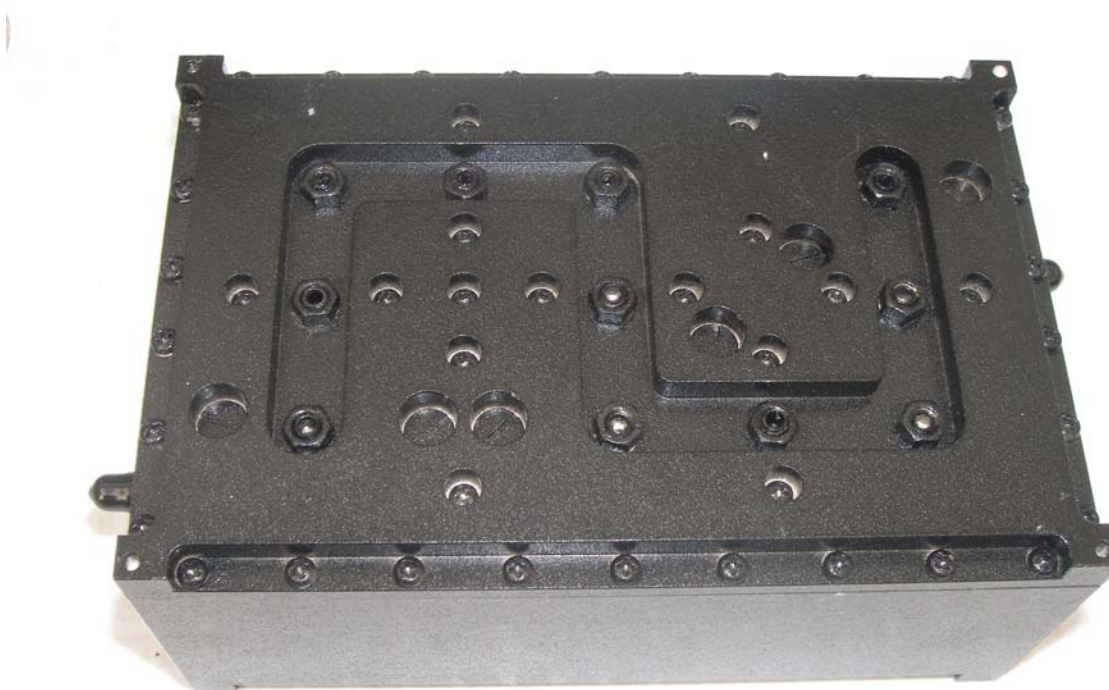


Photo10 . cavity filter bottom view



Photo11. Cavity filter Out connector

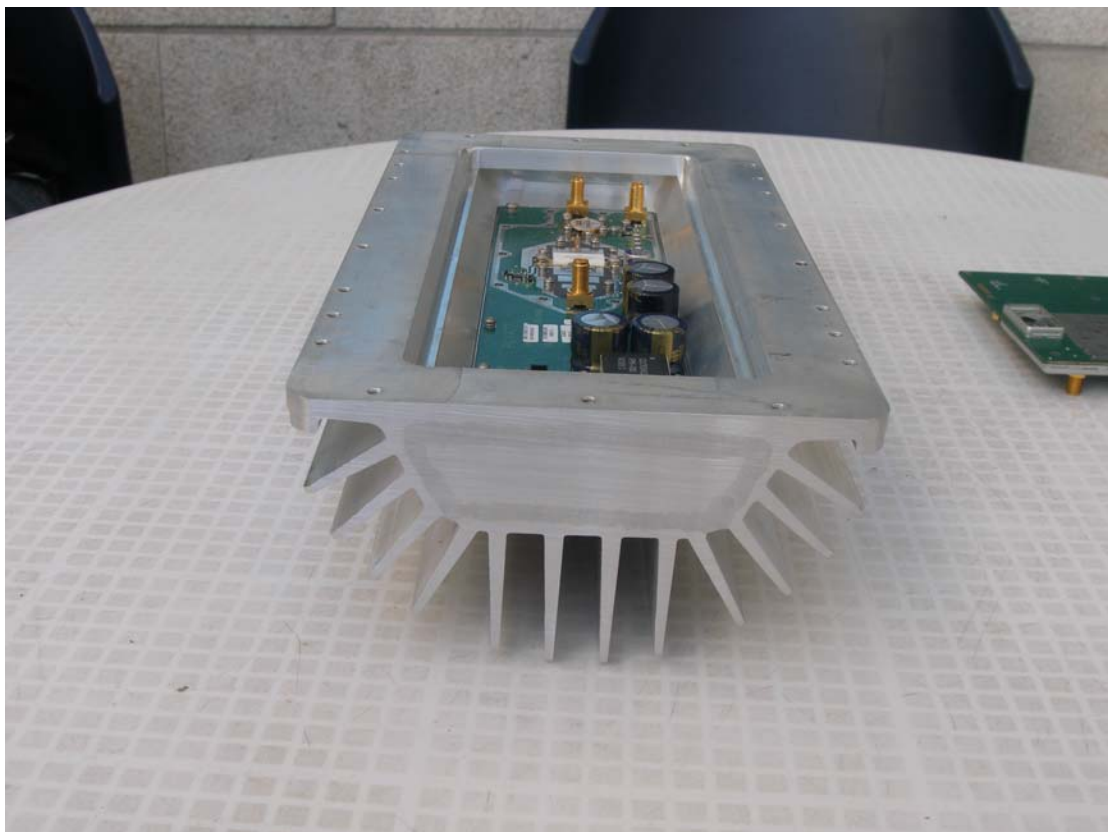


Photo12 . Power amplifier in case with open cover



Photo13 . IF Connector TNC side



Photo14. From left: cavity filter, open case w/power amplifier PCB, Basic unit PCB, Power amplifier PCB

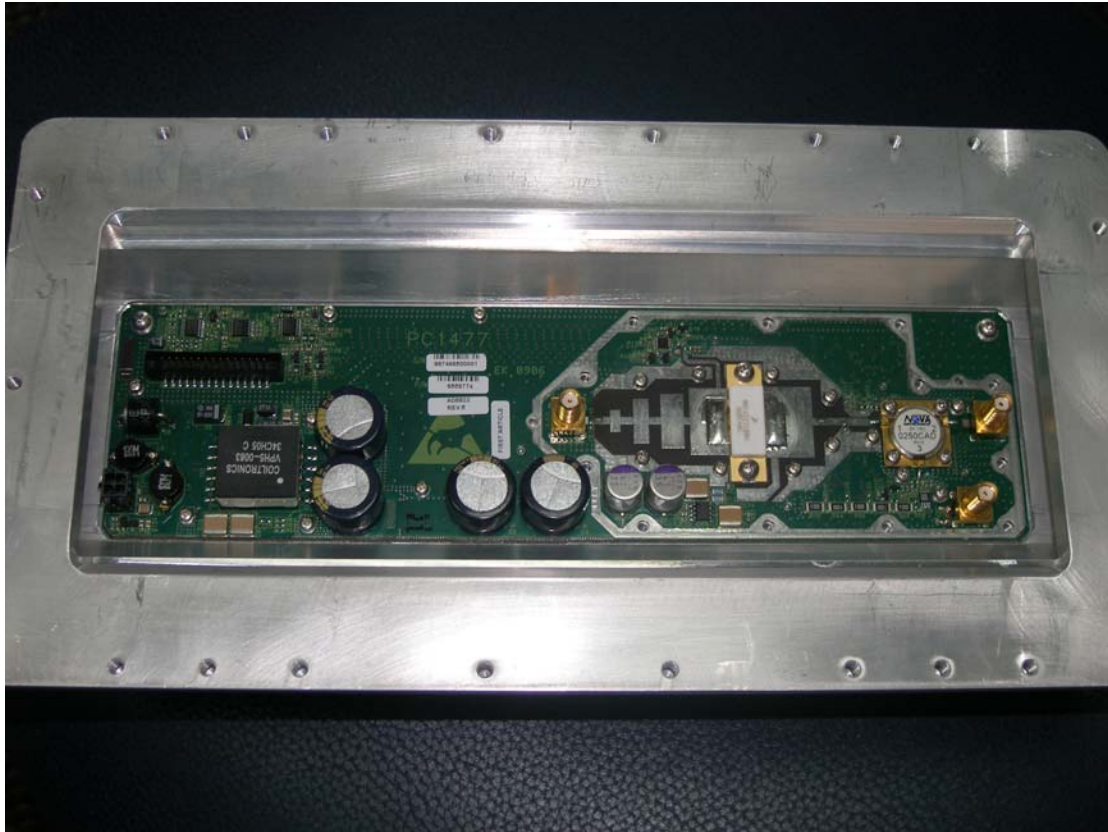


Photo15 Power amplifier , open case

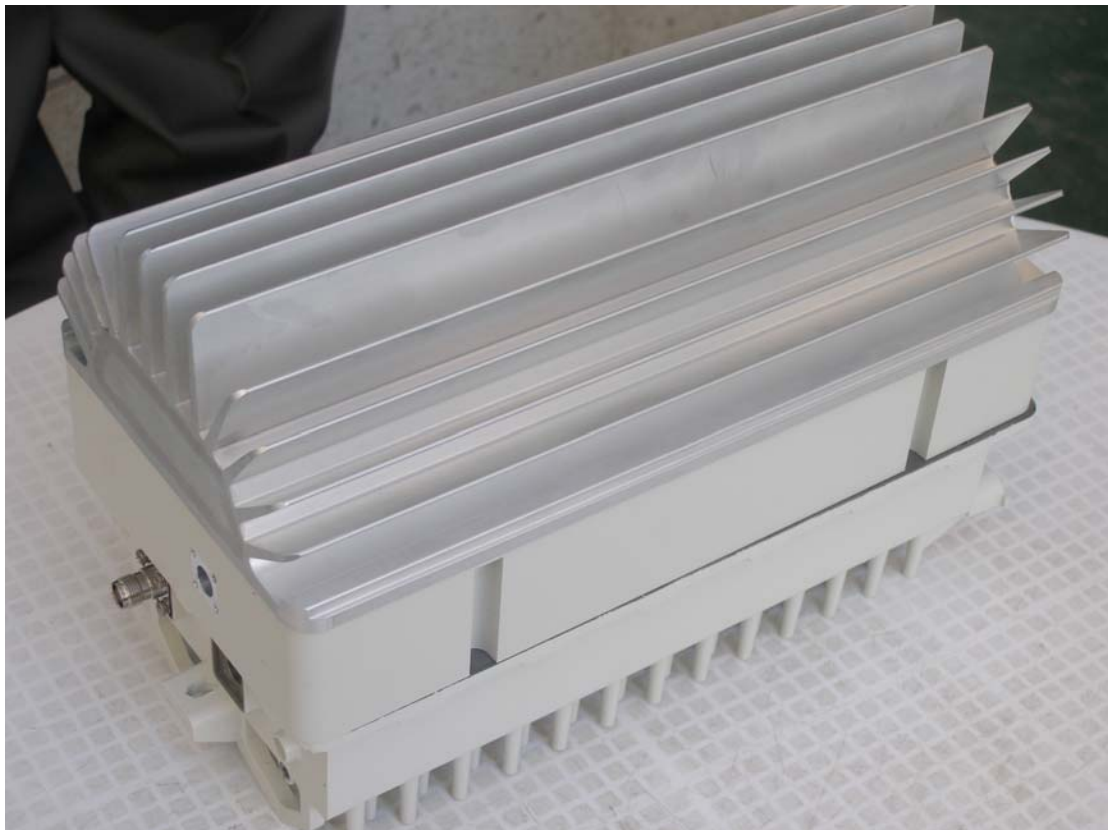


Photo16. ODU external view



Photo17. ODU open cover , right side Power amplifier

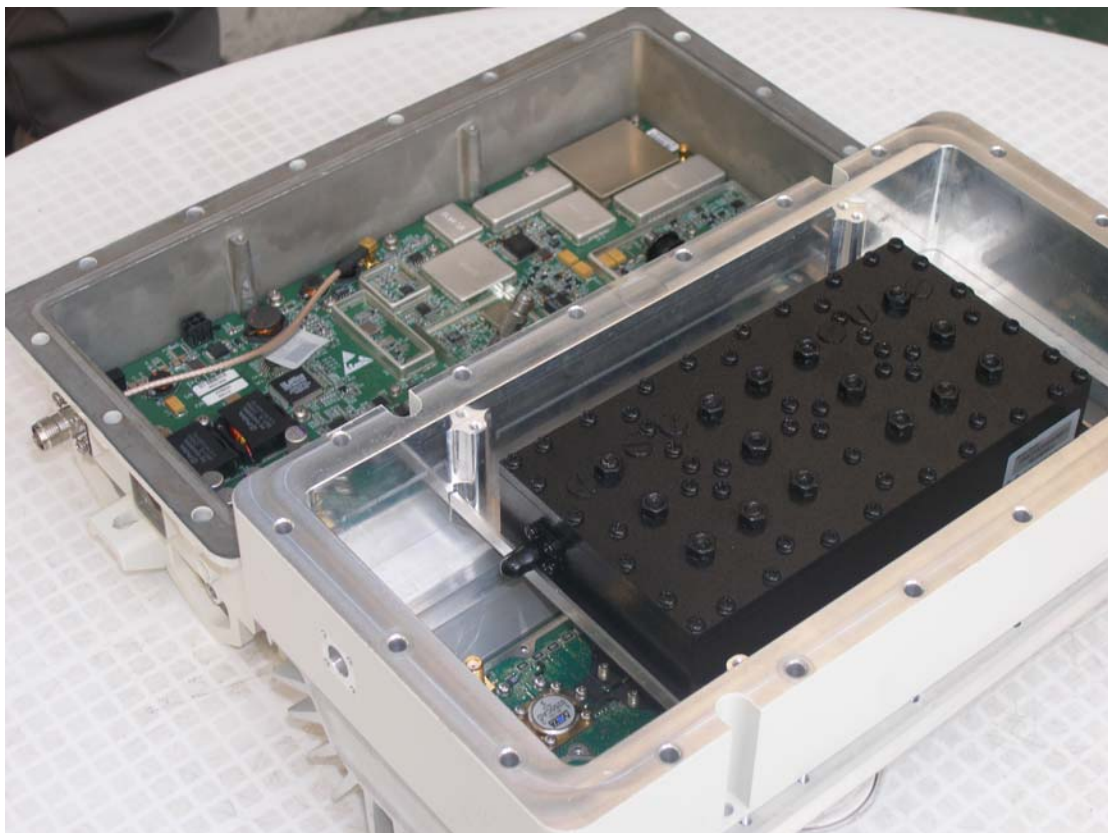


Photo 18. ODU open cover, left side Basic unit PCB , right side cavity filter and power amplifier PCB

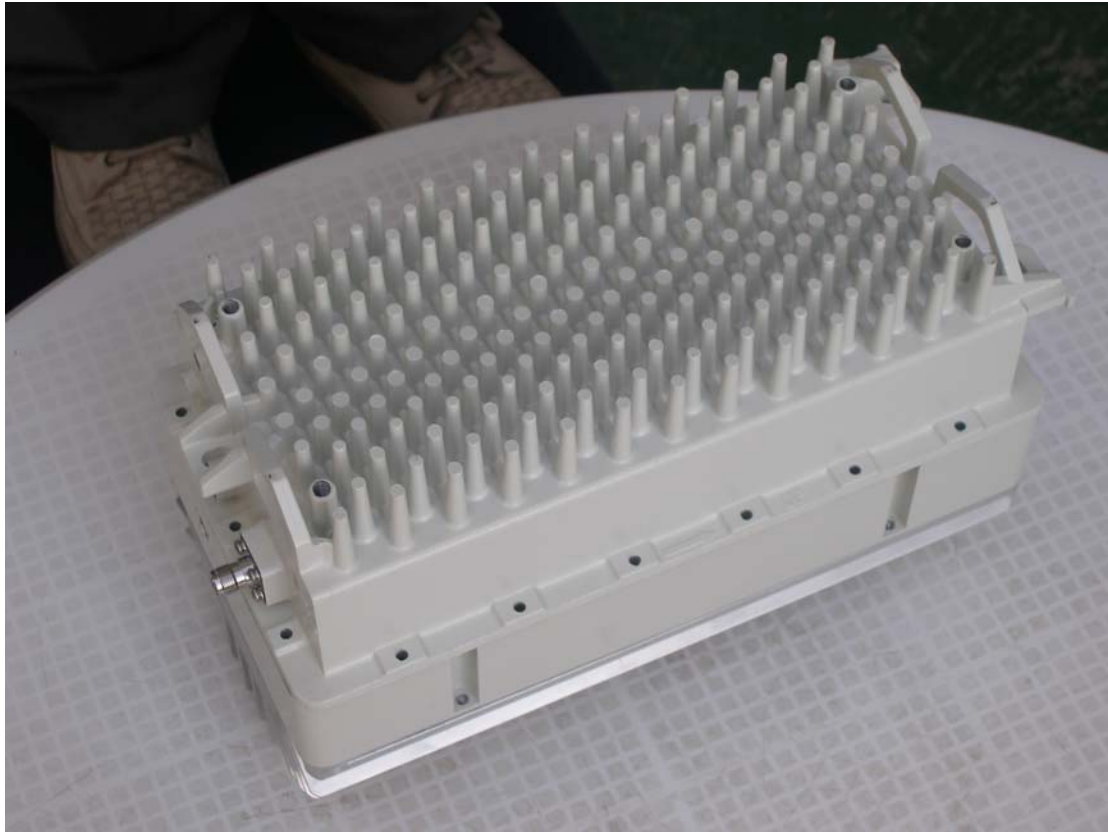


Photo19. ODU , bottom view