

## SAR Compliance Test Report

<b>Test report no.:</b>	FCC_RX-51_01	<b>Date of report:</b>	2009-07-07
<b>Template version:</b>	13.0	<b>Number of pages:</b>	69
<b>Testing laboratory:</b>	TCC Nokia Salo Laboratory P.O.Box 86 Joensuunkatu 7H / Kiila 1B FIN-24101 SALO, FINLAND Tel. +358 (0) 7180 08000 Fax. +358 (0) 7180 45220	<b>Client:</b>	Nokia Corporation P.O. Box 50 Elektroniikkatie 10 FIN-90571 OULU, FINLAND Tel. +358 (0) 7180 08000 Fax. +358 (0) 7180 47222
<b>Responsible test engineer:</b>	Jesper Nielsen	<b>Product contact person:</b>	Tuomo Pursiheimo, Pasi Vainio, Teemu Tenhula
<b>Measurements made by:</b>	Heikki Kuusela, Alina Tähkäpää, Virpi Tuominen		
<b>Tested device:</b>	RX-51		
<b>FCC ID:</b>	LJPRX-51	<b>IC:</b>	661E-RX51
<b>Supplement reports:</b>	SAR_Photo_RX-51_02		
<b>Testing has been carried out in accordance with:</b>	<b>47CFR §2.1093</b> Radiofrequency Radiation Exposure Evaluation: Portable Devices <b>FCC OET Bulletin 65 (Edition 97-01), Supplement C (Edition 01-01)</b> Evaluating Compliance with FCC Guidelines for Human Exposure to Radiofrequency Electromagnetic Fields <b>RSS-102</b> Evaluation Procedure for Mobile and Portable Radio Transmitters with Respect to Health Canada's Safety Code 6 for Exposure of Humans to Radio Frequency Fields <b>IEEE 1528 - 2003</b> IEEE Recommended Practice for Determining the Peak Spatial-Average Specific Absorption Rate (SAR) in the Human Head from Wireless Communications Devices: Measurement Technique		
<b>Documentation:</b>	The documentation of the testing performed on the tested devices is archived for 15 years at TCC Nokia.		
<b>Test results:</b>	The tested device complies with the requirements in respect of all parameters subject to the test. The test results and statements relate only to the items tested. The test report shall not be reproduced except in full, without written approval of the laboratory.		
<b>Date and signatures:</b>			
<b>For the contents:</b>			

## CONTENTS

<b>1. SUMMARY OF SAR TEST REPORT.....</b>	<b>3</b>
1.1 TEST DETAILS .....	3
1.2 MAXIMUM RESULTS.....	3
1.2.1 Head Configuration.....	3
1.2.2 Body Worn Configuration .....	4
1.2.3 Maximum Drift .....	4
1.2.4 Measurement Uncertainty.....	4
<b>2. DESCRIPTION OF THE DEVICE UNDER TEST .....</b>	<b>5</b>
2.1 DESCRIPTION OF THE ANTENNA.....	5
<b>3. TEST CONDITIONS .....</b>	<b>6</b>
3.1 TEMPERATURE AND HUMIDITY .....	6
3.2 TEST SIGNAL, FREQUENCIES AND OUTPUT POWER.....	6
3.3 TEST CASES AND TEST MINIMISATION .....	6
<b>4. DESCRIPTION OF THE TEST EQUIPMENT.....</b>	<b>9</b>
4.1 MEASUREMENT SYSTEM AND COMPONENTS.....	9
4.1.1 Isotropic E-field Probe Type ET3DV6.....	10
4.1.2 Isotropic E-field Probe Type ES3DV3.....	10
4.2 PHANTOMS.....	11
4.3 TISSUE SIMULANTS .....	11
4.3.1 Tissue Simulant Recipes.....	11
4.3.2 System Checking .....	12
4.3.3 Tissue Simulants used in the Measurements.....	14
<b>5. DESCRIPTION OF THE TEST PROCEDURE.....</b>	<b>15</b>
5.1 DEVICE HOLDER .....	15
5.2 TEST POSITIONS .....	15
5.2.1 Against Phantom Head.....	15
5.2.2 Body Worn Configuration .....	15
5.3 SCAN PROCEDURES .....	16
5.4 SAR AVERAGING METHODS .....	16
<b>6. MEASUREMENT UNCERTAINTY .....</b>	<b>17</b>
<b>7. RESULTS.....</b>	<b>18</b>
<b>APPENDIX A: SYSTEM CHECKING SCANS .....</b>	<b>24</b>
<b>APPENDIX B: MEASUREMENT SCANS.....</b>	<b>33</b>
<b>APPENDIX C: CONDUCTED AVERAGE POWER MEASUREMENTS FOR WCDMA AND HSUPA .....</b>	<b>67</b>
<b>APPENDIX D: RELEVANT PAGES FROM PROBE CALIBRATION REPORT(S).....</b>	<b>68</b>
<b>APPENDIX E: RELEVANT PAGES FROM DIPOLE VALIDATION KIT REPORT(S).....</b>	<b>69</b>

## 1. SUMMARY OF SAR TEST REPORT

### 1.1 Test Details

Period of test	2009-06-09 to 2009-07-03
SN, HW and SW numbers of tested device	SN: 004401/10/715043/1, HW: 2001, SW:1.2009.22-15 , DUT: 13894
Batteries used in testing	BL-5J, DUT: 13911, 13912, 13913, 13914
Headsets used in testing	WH-205, DUT: 13896
Other accessories used in testing	-
State of sample	Prototype unit
Notes	-

### 1.2 Maximum Results

The maximum measured SAR values for Head configuration and Body Worn configuration are given in section 1.2.1 and 1.2.2 respectively. The device conforms to the requirements of the standard(s) when the maximum measured SAR value is less than or equal to the limit.

#### 1.2.1 Head Configuration

Mode	Ch / f (MHz)	Conducted power	Position	Measured SAR value (1g avg)	Scaled* SAR value (1g avg)	SAR limit (1g avg)	Result
2-slot GPRS850	251 / 848.8	32.5 dBm	Left, Cheek	0.394 W/kg	<b>0.44 W/kg</b>	1.6 W/kg	<b>PASSED</b>
WCDMA1700/2100	1312 / 1712.4	22.0 dBm	Left, Cheek	0.369 W/kg	<b>0.41 W/kg</b>	1.6 W/kg	<b>PASSED</b>
3-slot GPRS1900	810 / 1909.8	27.7 dBm	Right, Cheek	0.703 W/kg	<b>0.79 W/kg</b>	1.6 W/kg	<b>PASSED</b>
WLAN2450	7 / 2442.0	17.0 dBm	Left, Cheek	0.213 W/kg	<b>0.24 W/kg</b>	1.6 W/kg	<b>PASSED</b>
2-slot GPRS850 + WLAN2450	-	-	Left, Cheek	0.607 W/kg	<b>0.68 W/kg</b>	1.6 W/kg	<b>PASSED</b>
WCDMA1700/2100 + WLAN2450	-	-	Left, Cheek	0.582 W/kg	<b>0.65 W/kg</b>	1.6 W/kg	<b>PASSED</b>
3-slot GPRS1900 + WLAN2450	-	-	Right, Cheek	0.822 W/kg	<b>0.92 W/kg</b>	1.6 W/kg	<b>PASSED</b>

### 1.2.2 Body Worn Configuration

Mode	Ch / f (MHz)	Conducted power	Separation distance	Measured SAR value (1g avg)	Scaled* SAR value (1g avg)	SAR limit (1g avg)	Result
2-slot GPRS850	251 / 848.8	32.5 dBm	2.2 cm	0.650 W/kg	<b>0.73 W/kg</b>	1.6 W/kg	<b>PASSED</b>
WCDMA1700/2100	1513 / 1752.6	22.0 dBm	2.2 cm	0.369 W/kg	<b>0.41 W/kg</b>	1.6 W/kg	<b>PASSED</b>
3-slot GPRS1900	512 / 1850.2	27.7 dBm	2.2 cm	0.534 W/kg	<b>0.60 W/kg</b>	1.6 W/kg	<b>PASSED</b>
WLAN2450	11 / 2462.0	17.0 dBm	2.2 cm	0.083 W/kg	<b>0.09 W/kg</b>	1.6 W/kg	<b>PASSED</b>
2-slot GPRS850 + WLAN2450	-	-	2.2 cm	0.733 W/kg	<b>0.82 W/kg</b>	1.6 W/kg	<b>PASSED</b>
WCDMA1700/2100 + WLAN2450	-	-	2.2 cm	0.444 W/kg	<b>0.50 W/kg</b>	1.6 W/kg	<b>PASSED</b>
3-slot GPRS1900 + WLAN2450	-	-	2.2 cm	0.617 W/kg	<b>0.69 W/kg</b>	1.6 W/kg	<b>PASSED</b>

\* SAR values are scaled up by 12% to cover measurement drift. As a consequence of this upwards correction of the SAR values, the contribution of measurement drift to the overall measurement uncertainty (Section 6) is reduced to zero.

### 1.2.3 Maximum Drift

Maximum drift covered by 12% scaling up of the SAR values	Maximum drift during measurements
0.5dB	0.47 dB

### 1.2.4 Measurement Uncertainty

Expanded Uncertainty (k=2) 95%	± 25.8%
--------------------------------	---------

## 2. DESCRIPTION OF THE DEVICE UNDER TEST

Device category	Portable
Exposure environment	General population / uncontrolled

Modes of Operation	Bands	Modulation Mode	Duty Cycle	Transmitter Frequency Range (MHz)
GSM	850 1900	GMSK	1/8	824 – 849 1850 – 1910
GPRS	850 1900	GMSK	1/8 to 3/8	824 – 849 1850 – 1910
EGPRS	850 1900	GMSK / 8PSK	1/8 to 3/8	824 – 849 1850 – 1910
WCDMA	1700/2100 (Band IV)		1	1712 – 1753
HSUPA	1700/2100 (Band IV)		1	1712 – 1753
BT	2450	GFSK	1	2402 – 2480
WLAN	2450	11Mbps QPSK	1	2412 – 2462

Outside of USA and Canada, the transmitter of the device is capable of operating also in GSM/GPRS/EGPRS900, GSM/GPRS/EGPRS1800, WCDMA900 and WCDMA2100 bands which are not part of this filing.

This device has Voice-over-IP/Dual Transfer Mode capability for use at the ear. Therefore, SAR for multi slot GPRS mode was evaluated against the head profile of the phantom. Dual Transfer Mode is a feature that utilises the multi-slot GPRS capability in this device; it allows simultaneous transmission of voice and data during the same call, using the same transmitter and antenna.

This is a WCDMA HSUPA device, but SAR tests for HSUPA mode have not been performed as no HSUPA Sub-test mode has an average power > 0.25dB above the basic WCDMA 12.2kbps RMC mode. Appendix C of this report gives a summary of the measured WCDMA and HSUPA average powers; a detailed report of these WCDMA and HSUPA conducted power tests is submitted separately.

### 2.1 Description of the Antenna

The device has internal antennas for both cellular and WLAN use. The cellular antenna is located at the bottom in the back section of the keypad slide. The WLAN antenna is located at the top in the back section of the keypad slide.

---

### 3. TEST CONDITIONS

#### 3.1 Temperature and Humidity

Ambient temperature (°C):	19.6 to 23.9
Ambient humidity (RH %):	39 to 53

#### 3.2 Test Signal, Frequencies and Output Power

The device was put into operation by using a call tester except for testing WLAN2450 where control software was used. Communication between the device and the call tester was established by air link.

The device output power was set to maximum power level for all tests; a fully charged battery was used for every test sequence.

The transmission mode of the device in all WCDMA tests was configured to 12.2kbps RMC with all TPC bits set as “1”.

In all operating bands the measurements were performed on lowest, middle and highest channels.

The radiated output power of the device was measured by a separate test laboratory on the same unit(s) as used for SAR testing. The results are given in the EMC report supporting this application.

The transmission mode of the device in all WLAN tests was DSSS QPSK 11Mbps. This mode has the highest (or equal highest) time-averaged output power of all the WLAN modulation modes in Nokia devices.

#### 3.3 Test Cases and Test Minimisation

The tested device examined in this report may not incorporate all of the features described in the text that follows, but its SAR evaluation will have been subjected to the same considerations and test logic described below.

Whilst it's possible to identify the maximum SAR test cases from inspection of the conducted power levels given in the Results tables (Section 7), different modes in the same band and multi-slot transmit GSM/GPRS modes can create some difficulties. Therefore the sequence of the SAR tests made in evaluating this device has used test logic that is based on measured SAR values. Comparison of measured SAR values in this way, can also allow some test minimization (i.e. test elimination) to be made.

For example, when SAR testing multi-slot GSM/GPRS/EGPRS modes, it is an inefficient use of test resources to fully SAR test every test configuration in each of the different modes as these modes have a fixed power relationship between them that is the same, irrespective of the test configuration. In the case of multi-slot GSM/GPRS modes, a single comparative SAR test - using the same test channel and test configuration - is made in each of the n-slot modes; the mode with the highest measured SAR value is then subjected to full SAR testing in all test configurations. These comparative SAR tests (same frequency, same test configuration) are regarded as extremely accurate as they are relative tests in which the tested device changes neither its frequency nor its position between tests. For different modes that operate in the same band and use the same antenna e.g. GSM/GPRS850 and WCDMA850, full SAR testing is carried out in the GSM/GPRS850 mode but WCDMA850 testing is limited to 3 channel testing in the maximum SAR test configuration for GSM/GPRS850.

Multi-slot SAR testing against the Head is always performed whenever such a device offers Push to Talk over cellular with the internal earpiece active, Dual Transfer Mode (i.e. the ability to transmit voice and data simultaneously using the same transmitter) or has WLAN (which enables a Voice over IP call to take place whilst the device can simultaneously transmit data on a cellular band). Whenever a device has an intended multi-slot use against the head, it is also Head SAR tested in EGPRS mode. It should be noted that EGPRS transmit modes can have either GMSK or 8PSK modulation but, when tested, only 8PSK EGPRS will appear explicitly in the results tables, as GMSK EGPRS mode has identical time-averaged power to the reported GPRS mode.

Devices that have flips or slides are fully SAR tested in all device configurations consistent with their intended usage. For example, flip phones that can receive a call in closed mode are SAR tested against the head in both open and closed configurations. Similarly, slide phones are fully SAR tested in all slide configurations in which calls are intended to be made or received.

In the results tables in Section 7, the maximum SAR value for the ‘basic’ tests (i.e. left cheek, left tilt, right cheek and right tilt in Head SAR testing; with and without headset with the back &/or display side facing the flat phantom in Body SAR testing) is bolded for each band. In some cases, after full testing of the basic SAR test configurations has been completed, additional checking SAR tests are made. These checking tests are always based on the bolded result from the ‘basic’ testing. When the SAR value of a checking test exceeds the maximum value from the basic tests, it is also bolded and used as the basis for any further checking tests that might be needed.

Checking tests are largely voluntary and can cover optional batteries, different camera slide positions, optional covers, etc. In the case of optional batteries, if the construction of the optional battery is significantly different to the battery used in the full testing e.g. if the outer can is floating electrically rather than grounded, then the maximum SAR test configuration in each band is tested with the optional battery in 3 channels. For camera slides, if the slide material is metal, then checking tests in 3 channels are again run for the maximum SAR test configuration in each band. For plastic camera slides, SAR checking is only carried out in the channel that provided the maximum SAR value for the original. Optional front and back covers are tested if their shape differs significantly from the original or if their metallic content varies by more than 15% from the original; in the former case, the testing depends on the extent of the physical differences, whereas in the latter case, 3 channel SAR testing is performed in every band in the max SAR test configuration..



#### 4. DESCRIPTION OF THE TEST EQUIPMENT

##### 4.1 Measurement System and Components

The measurements were performed using an automated near-field scanning system, DASY4, manufactured by Schmid & Partner Engineering AG (SPEAG) in Switzerland. The SAR extrapolation algorithm used in all measurements was the 'advanced extrapolation' algorithm.

The following table lists calibration dates of SPEAG components:

Test Equipment	Serial Number	Calibration interval	Calibration expiry
DAE 4	555	12 months	2009-11
DAE 4	728	12 months	2010-02
E-field Probe ET3DV6	1395	12 months	2009-07
E-field Probe ES3DV3	3131	12 months	2010-02
E-field Probe ES3DV3	3165	12 months	2010-05
Dipole Validation Kit, D835V2	462	24 months	2010-01
Dipole Validation Kit, D1800V2	2d065	24 months	2010-01
Dipole Validation Kit, D1900V2	5d030	24 months	2010-01
Dipole Validation Kit, D2450V2	729	24 months	2010-01
DASY4 software	Version 4.7	-	-

Additional test equipment used in testing:

Test Equipment	Model	Serial Number	Calibration interval	Calibration expiry
Signal Generator	SML03	101265	12 months	2009-08
Amplifier	ZHL-42 (SMA)	N072095-5	12 months	2009-08
Power Meter	NRVS	849305/028	12 months	2009-08
Power Sensor	NRV-Z32	839176/020	12 months	2009-08
Call Tester	CMU 200	101111	-	-
Call Tester	CMU 200	104983	-	-
Vector Network Analyzer	8753E	US38432928	12 months	2009-08
Dielectric Probe Kit	85070B	US33020420	-	-

#### 4.1.1 Isotropic E-field Probe Type ET3DV6

<b>Construction</b>	Symmetrical design with triangular core Built-in optical fiber for surface detection system Built-in shielding against static charges PEEK enclosure material (resistant to organic solvents, e.g., butyl diglycol)
<b>Calibration</b>	Calibration certificate in Appendix C
<b>Frequency</b>	10 MHz to 3 GHz (dosimetry); Linearity: $\pm 0.2$ dB (30 MHz to 3 GHz)
<b>Optical Surface Detection</b>	$\pm 0.2$ mm repeatability in air and clear liquids over diffuse reflecting surfaces
<b>Directivity</b>	$\pm 0.2$ dB in HSL (rotation around probe axis) $\pm 0.4$ dB in HSL (rotation normal to probe axis)
<b>Dynamic Range</b>	5 $\mu$ W/g to > 100 mW/g; Linearity: $\pm 0.2$ dB
<b>Dimensions</b>	Overall length: 330 mm Tip length: 16 mm Body diameter: 12 mm Tip diameter: 6.8 mm Distance from probe tip to dipole centers: 2.7 mm
<b>Application</b>	General dosimetry up to 3 GHz Compliance tests of mobile phones Fast automatic scanning in arbitrary phantoms

#### 4.1.2 Isotropic E-field Probe Type ES3DV3

<b>Construction</b>	Symmetrical design with triangular core Interleaved sensors Built-in shielding against static charges PEEK enclosure material (resistant to organic solvents, e.g., butyl diglycol)
<b>Calibration</b>	Calibration certificate in Appendix C
<b>Frequency</b>	10 MHz to 4 GHz (dosimetry); Linearity: $\pm 0.2$ dB (30 MHz to 4 GHz)
<b>Directivity</b>	$\pm 0.2$ dB in HSL (rotation around probe axis) $\pm 0.3$ dB in HSL (rotation normal to probe axis)
<b>Dynamic Range</b>	5 $\mu$ W/g to > 100 mW/g; Linearity: $\pm 0.2$ dB
<b>Dimensions</b>	Overall length: 330 mm Tip length: 20 mm Body diameter: 12 mm Tip diameter: 3.9 mm Distance from probe tip to dipole centers: 2.0 mm
<b>Application</b>	General dosimetry up to 4 GHz Compliance tests of mobile phones Fast automatic scanning in arbitrary phantoms

## 4.2 Phantoms

The phantom used for all tests i.e. for both system checks and device testing, was the twin-headed "SAM Phantom", manufactured by SPEAG. The phantom conforms to the requirements of IEEE 1528 - 2003.

System checking was performed using the flat section, whilst Head SAR tests used the left and right head profile sections. Body SAR testing also used the flat section between the head profiles.

The SPEAG device holder (see Section 5.1) was used to position the device in all tests whilst a tripod was used to position the validation dipoles against the flat section of phantom.

## 4.3 Tissue Simulants

Recommended values for the dielectric parameters of the tissue simulants are given in IEEE 1528 - 2003 and FCC Supplement C to OET Bulletin 65. All tests were carried out using simulants whose dielectric parameters were within  $\pm 5\%$  of the recommended values. All tests were carried out within 24 hours of measuring the dielectric parameters.

The depth of the tissue simulant was  $15.0 \pm 0.5$  cm measured from the ear reference point during system checking and device measurements.

### 4.3.1 Tissue Simulant Recipes

The following recipe(s) were used for Head and Body tissue simulant(s):

#### 800MHz band

Ingredient	Head (% by weight)	Body (% by weight)
Deionised Water	51.50	69.25
Tween 20	47.35	30.00
Salt	1.15	0.75

#### 1800MHz band

Ingredient	Head (% by weight)	Body (% by weight)
Deionised Water	54.0	70.20
Tween 20	45.6	29.37
Salt	0.4	0.43

**1900MHz band**

<b>Ingredient</b>	<b>Head (% by weight)</b>	<b>Body (% by weight)</b>
Deionised Water	54.50	70.25
Tween 20	45.23	29.41
Salt	0.27	0.34

**2450MHz band**

<b>Ingredient</b>	<b>Head (% by weight)</b>	<b>Body (% by weight)</b>
Deionised Water	56.0	70.20
Tween 20	44.0	29.62
Salt	-	0.18

#### 4.3.2 System Checking

The manufacturer calibrates the probes annually. Dielectric parameters of the tissue simulants were measured every day using the dielectric probe kit and the network analyser. A system check measurement was made following the determination of the dielectric parameters of the simulant, using the dipole validation kit. A power level of 250 mW was supplied to the dipole antenna, which was placed under the flat section of the twin SAM phantom. The system checking results (dielectric parameters and SAR values) are given in the table below.

**System checking, head tissue simulant**

<i>f</i> [MHz]	Description	SAR [W/kg], 1g	Dielectric Parameters		Temp [°C]
			$\epsilon_r$	$\sigma$ [S/m]	
835	Reference result	2.42	43.0	0.92	
	± 10% window	2.18 – 2.66			
	2009-06-29	2.48	40.9	0.92	21.0
	2009-07-03	2.53	41.0	0.92	21.0
1800	Reference result	9.70	38.5	1.41	
	± 10% window	8.73 – 10.7			
	2009-06-26	9.32	38.9	1.36	21.0
	2009-07-01	9.63	38.9	1.38	21.0
1900	Reference result	10.2	38.5	1.46	
	± 10% window	9.2 – 11.2			
	2009-06-09	10.7	39.4	1.43	21.0
	2009-06-16	10.6	38.1	1.43	21.0
	2009-07-01	10.3	38.4	1.48	21.0
2450	Reference result	14.3	37.8	1.82	
	± 10% window	12.9 – 15.7			
	2009-06-25	14.1	38.0	1.89	21.0

**System checking, body tissue stimulant**

<i>f</i> [MHz]	Description	SAR [W/kg], 1g	Dielectric Parameters		Temp [°C]
			$\epsilon_r$	$\sigma$ [S/m]	
2450	Reference result	13.8	52.5	1.99	
	± 10% window	12.4 – 15.2			
	2009-07-02	13.9	50.6	2.02	21.0

Plots of the system checking scans are given in Appendix A.

#### 4.3.3 Tissue Simulants used in the Measurements

##### Head tissue simulant measurements

f [MHz]	Description	Dielectric Parameters		Temp [°C]
		$\epsilon_r$	$\sigma$ [S/m]	
836	Recommended value	41.5	0.90	
	$\pm 5\%$ window	39.4 – 43.6	0.86 – 0.95	
	2009-06-29	40.9	0.92	21.0
1732	Recommended value	40.1	1.36	
	$\pm 5\%$ window	38.1 – 42.1	1.29 – 1.43	
	2009-06-26	39.3	1.31	21.0
1880	Recommended value	40.0	1.40	
	$\pm 5\%$ window	38.0 – 42.0	1.33 – 1.47	
	2009-06-09	39.5	1.41	21.0
	2009-06-16	38.2	1.41	21.0
2442	Recommended value	39.2	1.79	
	$\pm 5\%$ window	37.3 – 41.2	1.70 – 1.88	
	2009-06-25	38.0	1.88	21.0

##### Body tissue simulant measurements

f [MHz]	Description	Dielectric Parameters		Temp [°C]
		$\epsilon_r$	$\sigma$ [S/m]	
836	Recommended value	55.2	0.97	
	$\pm 5\%$ window	52.4 – 58.0	0.92 – 1.02	
	2009-07-03	53.2	1.00	21.0
1732	Recommended value	53.5	1.48	
	$\pm 5\%$ window	50.8 – 56.2	1.40 – 1.55	
	2009-07-01	52.5	1.43	21.0
1880	Recommended value	53.3	1.52	
	$\pm 5\%$ window	50.6 – 56.0	1.44 – 1.60	
	2009-07-01	52.0	1.60	21.0
2442	Recommended value	52.7	1.94	
	$\pm 5\%$ window	50.1 – 55.3	1.85 – 2.04	
	2009-07-02	50.6	2.01	21.0

---

## 5. DESCRIPTION OF THE TEST PROCEDURE

### 5.1 Device Holder

The device was placed in the device holder (illustrated below) that is supplied by SPEAG as an integral part of the Dasy system.



Device holder supplied by SPEAG

A Nokia designed spacer (illustrated below) was used to position the device within the SPEAG holder. The spacer positions the device so that the holder has minimal effect on the test results but still holds the device securely. The spacer was removed before the tests.



Nokia spacer

### 5.2 Test Positions

#### 5.2.1 Against Phantom Head

Measurements were made in “cheek” and “tilt” positions on both the left hand and right hand sides of the phantom.

The positions used in the measurements were according to IEEE 1528 - 2003 "IEEE Recommended Practice for Determining the Peak Spatial-Average Specific Absorption Rate (SAR) in the Human Head from Wireless Communications Devices: Measurement Techniques".

#### 5.2.2 Body Worn Configuration

The device was placed in the SPEAG holder using the Nokia spacer and placed below the flat section of the phantom. The distance between the device and the phantom was kept at the

---

separation distance indicated in Section 1.2.2 using a separate flat spacer that was removed before the start of the measurements. The device was oriented with its back facing the phantom since this orientation gives higher results.

### 5.3 Scan Procedures

First, area scans were used for determination of the field distribution. Next, a zoom scan, a minimum of 5x5x7 points covering a volume of at least 30x30x30mm, was performed around the highest E-field value to determine the averaged SAR value. Drift was determined by measuring the same point at the start of the area scan and again at the end of the zoom scan.

### 5.4 SAR Averaging Methods

The maximum SAR value was averaged over a cube of tissue using interpolation and extrapolation.

The interpolation, extrapolation and maximum search routines within Dasy4 are all based on the modified Quadratic Shepard's method (Robert J. Renka, "Multivariate Interpolation Of Large Sets Of Scattered Data", University of North Texas ACM Transactions on Mathematical Software, vol. 14, no. 2, June 1988, pp. 139-148).

The interpolation scheme combines a least-square fitted function method with a weighted average method. A trivariate 3-D / bivariate 2-D quadratic function is computed for each measurement point and fitted to neighbouring points by a least-square method. For the zoom scan, inverse distance weighting is incorporated to fit distant points more accurately. The interpolating function is finally calculated as a weighted average of the quadratics.

In the zoom scan, the interpolation function is used to extrapolate the Peak SAR from the deepest measurement points to the inner surface of the phantom.



## 6. MEASUREMENT UNCERTAINTY

Table 6.1 – Measurement uncertainty evaluation

Uncertainty Component	Section in IEEE 1528	Tol. (%)	Prob Dist	Div	$C_i$	$C_i \cdot U_i$ (%)	$V_i$
<b>Measurement System</b>							
Probe Calibration	E2.1	±5.9	N	1	1	±5.9	∞
Axial Isotropy	E2.2	±4.7	R	√3	$(1-c_p)^{1/2}$	±1.9	∞
Hemispherical Isotropy	E2.2	±9.6	R	√3	$(c_p)^{1/2}$	±3.9	∞
Boundary Effect	E2.3	±1.0	R	√3	1	±0.6	∞
Linearity	E2.4	±4.7	R	√3	1	±2.7	∞
System Detection Limits	E2.5	±1.0	R	√3	1	±0.6	∞
Readout Electronics	E2.6	±1.0	N	1	1	±1.0	∞
Response Time	E2.7	±0.8	R	√3	1	±0.5	∞
Integration Time	E2.8	±2.6	R	√3	1	±1.5	∞
RF Ambient Conditions - Noise	E6.1	±3.0	R	√3	1	±1.7	∞
RF Ambient Conditions - Reflections	E6.1	±3.0	R	√3	1	±1.7	∞
Probe Positioner Mechanical Tolerance	E6.2	±0.4	R	√3	1	±0.2	∞
Probe Positioning with respect to Phantom Shell	E6.3	±2.9	R	√3	1	±1.7	∞
Extrapolation, interpolation and Integration Algorithms for Max. SAR Evaluation	E5	±3.9	R	√3	1	±2.3	∞
<b>Test sample Related</b>							
Test Sample Positioning	E4.2	±6.0	N	1	1	±6.0	11
Device Holder Uncertainty	E4.1	±5.0	N	1	1	±5.0	7
Output Power Variation - SAR drift measurement	6.6.3	±0.0	R	√3	1	±0.0	∞
<b>Phantom and Tissue Parameters</b>							
Phantom Uncertainty (shape and thickness tolerances)	E3.1	±4.0	R	√3	1	±2.3	∞
Conductivity Target - tolerance	E3.2	±5.0	R	√3	0.64	±1.8	∞
Conductivity - measurement uncertainty	E3.3	±5.5	N	1	0.64	±3.5	5
Permittivity Target - tolerance	E3.2	±5.0	R	√3	0.6	±1.7	∞
Permittivity - measurement uncertainty	E3.3	±2.9	N	1	0.6	±1.7	5
<b>Combined Standard Uncertainty</b>			RSS			±12.9	116
<b>Coverage Factor for 95%</b>			k=2				
<b>Expanded Uncertainty</b>						±25.8	

## 7. RESULTS

The measured Head SAR values for the test device are tabulated below:

### 850MHz Head SAR results

Mode	Option used	Test configuration		SAR, averaged over 1g (W/kg)		
				Ch 128 824.2 MHz	Ch 190 836.6 MHz	Ch 251 848.8 MHz
<b>GSM</b>		<b>Conducted Power</b>		-	32.5 dBm	-
	Phone Slide Closed Camera Slide Closed	Left	Cheek	-	0.175	-
			Tilt	-	-	-
		Right	Cheek	-	-	-
			Tilt	-	-	-
<b>2-slot GPRS</b>		<b>Conducted Power</b>		32.5 dBm	32.5 dBm	32.5 dBm
	Phone Slide Closed Camera Slide Closed	Left	Cheek	0.151	0.268	0.322
			Tilt	-	0.259	-
		Right	Cheek	-	0.211	-
			Tilt	-	0.213	-
<b>3-slot GPRS</b>		<b>Conducted Power</b>		-	30.7 dBm	-
	Phone Slide Closed Camera Slide Closed	Left	Cheek	-	0.257	-
			Tilt	-	-	-
		Right	Cheek	-	-	-
			Tilt	-	-	-
<b>2-slot 8PSK EGPRS</b>		<b>Conducted Power</b>		-	-	27.0 dBm
	Phone Slide Closed Camera Slide Closed	Left	Cheek	-	-	0.029
			Tilt	-	-	-
		Right	Cheek	-	-	-
			Tilt	-	-	-
<b>2-slot GPRS</b>	Phone Slide Closed Camera Slide Open	Left, Cheek		0.143	0.205	0.394

**1700MHz Head SAR results**

Mode	Option used	Test configuration		SAR, averaged over 1g (W/kg)		
				Ch 1312 1712.4 MHz	Ch 1412 1732.4 MHz	Ch 1513 1752.6 MHz
WCDMA		Conducted Power		22.0 dBm	22.0 dBm	22.0 dBm
	Phone Slide Closed Camera Slide Closed	Left	Cheek	0.369	0.351	0.349
			Tilt	-	0.195	-
		Right	Cheek	-	0.220	-
			Tilt	-	0.185	-
WCDMA	Phone Slide Closed Camera Slide Open	Left, Cheek		0.357	0.343	0.358

### 1900MHz Head SAR results

Mode	Option used	Test configuration		SAR, averaged over 1g (W/kg)		
				Ch 512 1850.2 MHz	Ch 661 1880.0 MHz	Ch 810 1909.8 MHz
GSM		Conducted Power		-	29.5 dBm	-
	Phone Slide Closed Camera Slide Closed	Left	Cheek	-	0.256	-
			Tilt	-	-	-
		Right	Cheek	-	-	-
			Tilt	-	-	-
2-slot GPRS		Conducted Power		-	29.5 dBm	-
	Phone Slide Closed Camera Slide Closed	Left	Cheek	-	0.462	-
			Tilt	-	-	-
		Right	Cheek	-	-	-
			Tilt	-	-	-
3-slot GPRS		Conducted Power		27.7 dBm	27.7 dBm	27.7 dBm
	Phone Slide Closed Camera Slide Closed	Left	Cheek	-	0.475	-
			Tilt	-	0.215	-
		Right	Cheek	0.425	0.556	0.622
			Tilt	-	0.229	-
3-slot 8PSK EGPRS		Conducted Power		-	-	24.2 dBm
	Phone Slide Closed Camera Slide Closed	Left	Cheek	-	-	-
			Tilt	-	-	-
		Right	Cheek	-	-	0.188
			Tilt	-	-	-
3-slot GPRS	Phone Slide Closed Camera Slide Open	Right, Cheek		0.515	0.632	0.703

### 2450MHz Head SAR results

Mode	Option used	Test configuration		SAR, averaged over 1g (W/kg)		
				Ch 1 2412.0 MHz	Ch 7 2442.0 MHz	Ch 11 2462.0 MHz
WLAN		Conducted Power		17.0 dBm	17.0 dBm	17.0 dBm
	Phone Slide Closed	Left	Cheek	0.184	0.213	0.209
			Tilt	-	0.119	-
	Camera Slide Closed	Right	Cheek	-	0.119	-
			Tilt	-	0.126	-
WLAN	Phone Slide Closed Camera Slide Open	Left, Cheek		0.185	0.178	0.194

The measured Body SAR values for the test device are tabulated below:

### 850MHz Body SAR results

Mode	Option used	Device orientation	Test configuration	SAR, averaged over 1g (W/kg)		
				Ch 128 824.2 MHz	Ch 190 836.6 MHz	Ch 251 848.8 MHz
2-slot GPRS			Conducted Power	32.5 dBm	32.5 dBm	32.5 dBm
	Phone Slide Closed	Display facing phantom	Without headset	-	-	-
			Headset WH-205	-	-	-
	Camera Slide Closed	Back facing phantom	Without headset	0.294	0.456	<b>0.650</b>
			Headset WH-205	-	0.253	-

### 1700MHz Body SAR results

Mode	Option used	Device orientation	Test configuration	SAR, averaged over 1g (W/kg)		
				Ch 1312 1712.4 MHz	Ch 1412 1732.4 MHz	Ch 1513 1752.6 MHz
WCDMA			Conducted Power	22.0 dBm	22.0 dBm	22.0 dBm
	Phone Slide Closed	Display facing phantom	Without headset	-	-	-
			Headset WH-205	-	-	-
	Camera Slide Closed	Back facing phantom	Without headset	-	0.275	-
			Headset WH-205	0.240	0.300	0.369

### 1900MHz Body SAR results

Mode	Option used	Device orientation	Test configuration	SAR, averaged over 1g (W/kg)		
				Ch 512 1850.2 MHz	Ch 661 1880.0 MHz	Ch 810 1909.8 MHz
3-slot GPRS			Conducted Power	27.7 dBm	27.7 dBm	27.7 dBm
	Phone Slide Closed	Display facing phantom	Without headset	-	-	-
			Headset WH-205	-	-	-
	Camera Slide Closed	Back facing phantom	Without headset	0.534	0.530	0.510
			Headset WH-205	-	0.522	-

### 2450MHz Body SAR results

Mode	Option used	Device orientation	Test configuration	SAR, averaged over 1g (W/kg)		
				Ch 1 2412.0 MHz	Ch 7 2442.0 MHz	Ch 11 2462.0 MHz
WLAN			Conducted Power	17.0 dBm	17.0 dBm	17.0 dBm
	Phone Slide Closed	Display facing phantom	Without headset	-	-	-
			Headset WH-205	-	-	-
	Camera Slide Closed	Back facing phantom	Without headset	0.061	0.078	<b>0.083</b>
			Headset WH-205	-	0.075	-

**Simultaneous transmissions: Combined SAR results**

Test configuration	Max. 1g SAR results			
	WLAN2450	2-slot GPRS850	WCDMA1700/2100	3-slot GPRS1900
Head: Left, Cheek	0.213	0.394	0.369	0.475
Head: Left, Tilt	0.119	0.259	0.195	0.215
Head: Right, Cheek	0.119	0.211	0.220	0.703
Head: Right, Tilt	0.126	0.213	0.185	0.229
Body: Without Headset	0.083	0.650	0.275	0.534
Body: Headset WH-205	0.075	0.253	0.369	0.522

**Simultaneous transmissions: Combined SAR results**

Test configuration	Combined 1g SAR values		
	2-slot GPRS850 + WLAN2450	WCDMA1700/2100 + WLAN2450	3-slot GPRS1900 + WLAN2450
Head: Left, Cheek	<b>0.607</b>	<b>0.582</b>	0.688
Head: Left, Tilt	0.378	0.314	0.334
Head: Right, Cheek	0.330	0.339	<b>0.822</b>
Head: Right, Tilt	0.339	0.311	0.355
Body: Without Headset	<b>0.733</b>	0.358	<b>0.617</b>
Body: Headset WH-205	0.328	<b>0.444</b>	0.597

Note: Simultaneous Transmission Procedures as described in KDB648474 are not required for this product. The Combined SAR data given in the tables above has been voluntarily calculated.

Combining the maximum SAR values of WLAN2450 and the cellular bands tends to overestimate the SAR value since their maxima do not necessarily occur in the same location.

Plots of the Measurement scans are given in Appendix B.

## APPENDIX A: SYSTEM CHECKING SCANS

Date/Time: 2009-06-29 08:13:24

Test Laboratory: TCC Nokia

Type: D835V2; Serial: D835V2 - SN:462

**Communication System: CW835**

Frequency: 835 MHz; Duty Cycle: 1:1

Medium: HSL850; Medium Notes: t=20.4 C

Medium parameters used: f = 835 MHz;  $\sigma$  = 0.919 mho/m;  $\epsilon_r$  = 40.9;  $\rho$  = 1000 kg/m<sup>3</sup>

Phantom section: Flat Section

DASY4 Configuration:

- Probe: ET3DV6 - SN1395
- ConvF(5.85, 5.85, 5.85); Calibrated: 2008-07-17
- Sensor-Surface: 4mm (Mechanical Surface Detection)
- Electronics: DAE4 Sn728; Calibrated: 2009-02-09
- Phantom: SAM 3; Type: Twin SAM 040 CA; Serial: TP-1179
- Measurement SW: DASY4, V4.7 Build 55; Postprocessing SW: SEMCAD, V1.8 Build 184

**d=15mm, Pin=250mW/Area Scan (61x81x1):** Measurement grid: dx=15mm, dy=15mm

Maximum value of SAR (interpolated) = 2.65 mW/g

**d=15mm, Pin=250mW/Zoom Scan (7x7x7)/Cube 0:** Measurement grid: dx=5mm, dy=5mm, dz=5mm

Reference Value = 56.4 V/m

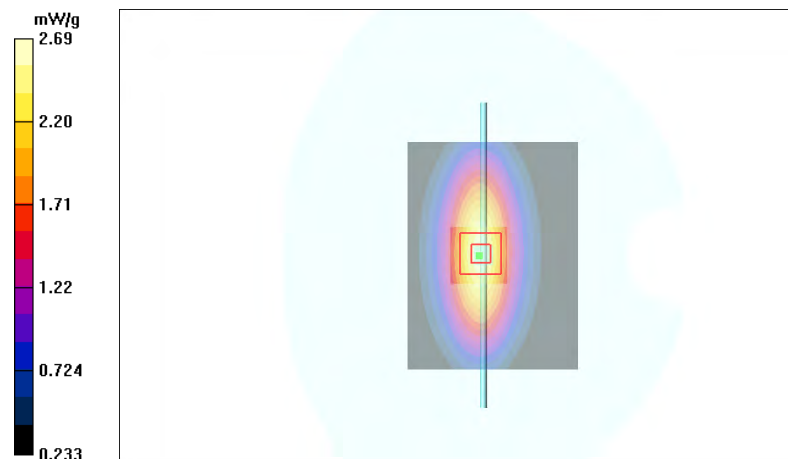
Peak SAR (extrapolated) = 3.60 W/kg

**SAR(1 g) = 2.48 mW/g**

**SAR(10 g) = 1.62 mW/g**

**Power Drift = 0.009 dB**

Maximum value of SAR (measured) = 2.69 mW/g





Date/Time: 2009-07-03 09:39:00

Test Laboratory: TCC Nokia  
Type: D835V2; Serial: D835V2 - SN:462

**Communication System: CW835**

Frequency: 835 MHz; Duty Cycle: 1:1

Medium: HSL 850; Medium Notes: 20.0 C

Medium parameters used:  $f = 835 \text{ MHz}$ ;  $\sigma = 0.915 \text{ mho/m}$ ;  $\epsilon_r = 41$ ;  $\rho = 1000 \text{ kg/m}^3$

Phantom section: Flat Section

**DASY4 Configuration:**

- Probe: ET3DV6 - SN1395
- ConvF(5.85, 5.85, 5.85); Calibrated: 2008-07-17
- Sensor-Surface: 4mm (Mechanical Surface Detection)
- Electronics: DAE4 Sn728; Calibrated: 2009-02-09
- Phantom: SAM 3; Type: Twin SAM 040 CA; Serial: TP-1179
- Measurement SW: DASY4, V4.7 Build 55; Postprocessing SW: SEMCAD, V1.8 Build 184

**d=15mm, Pin=250mW/Area Scan (61x81x1):** Measurement grid: dx=15mm, dy=15mm

Maximum value of SAR (interpolated) = 2.69 mW/g

**d=15mm, Pin=250mW/Zoom Scan (7x7x7)/Cube 0:** Measurement grid: dx=5mm, dy=5mm, dz=5mm

Reference Value = 57.3 V/m

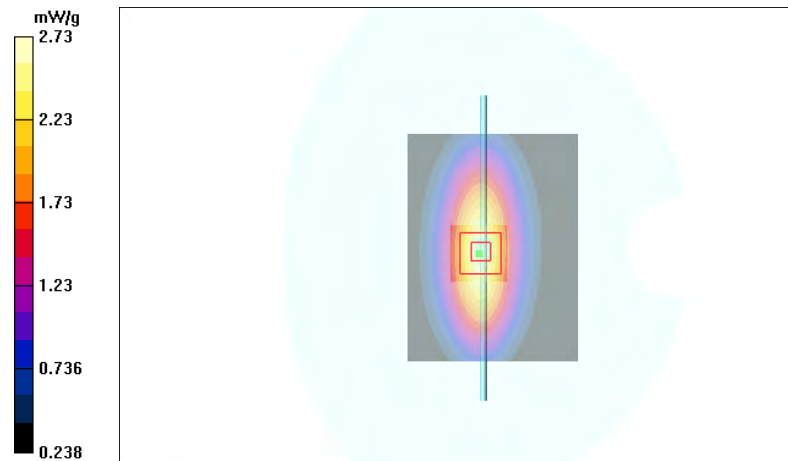
Peak SAR (extrapolated) = 3.68 W/kg

**SAR(1 g) = 2.53 mW/g**

**SAR(10 g) = 1.64 mW/g**

**Power Drift = -0.082 dB**

Maximum value of SAR (measured) = 2.73 mW/g



Date/Time: 2009-06-26 08:01:16

Test Laboratory: TCC Nokia

Type: D1800V2; Serial: D1800V2 - SN:2d065

**Communication System: CW1800**

Frequency: 1800 MHz; Duty Cycle: 1:1

Medium: HSL1800; Medium Notes: 21.7 C

Medium parameters used:  $f = 1800$  MHz;  $\sigma = 1.36$  mho/m;  $\epsilon_r = 38.9$ ;  $\rho = 1000$  kg/m<sup>3</sup>

Phantom section: Flat Section

DASY4 Configuration:

- Probe: ES3DV3 - SN3165
- ConvF(5.17, 5.17, 5.17); Calibrated: 2009-05-25
- Sensor-Surface: 4mm (Mechanical Surface Detection)
- Electronics: DAE4 Sn555; Calibrated: 2008-11-07
- Phantom: SAM 1; Type: Twin SAM 040 CA; Serial: TP-1449
- Measurement SW: DASY4, V4.7 Build 55; Postprocessing SW: SEMCAD, V1.8 Build 184

**d=15mm, Pin=250mW/Area Scan (61x81x1):** Measurement grid: dx=15mm, dy=15mm

Maximum value of SAR (interpolated) = 11.0 mW/g

**d=15mm, Pin=250mW/Zoom Scan (7x7x7)/Cube 0:** Measurement grid: dx=5mm, dy=5mm, dz=5mm

Reference Value = 87.7 V/m

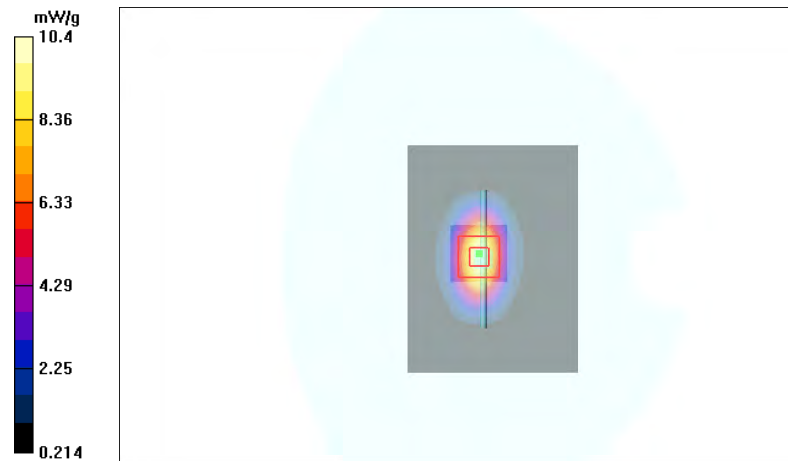
Peak SAR (extrapolated) = 17.2 W/kg

**SAR(1 g) = 9.32 mW/g**

**SAR(10 g) = 4.91 mW/g**

**Power Drift = 0.007 dB**

Maximum value of SAR (measured) = 10.4 mW/g



Date/Time: 2009-07-01 09:26:28

Test Laboratory: TCC Nokia

Type: D1800V2; Serial: D1800V2 - SN:2d065

**Communication System: CW1800**

Frequency: 1800 MHz; Duty Cycle: 1:1

Medium: HSL1800; Medium Notes: 21.5 C

Medium parameters used:  $f = 1800$  MHz;  $\sigma = 1.38$  mho/m;  $\epsilon_r = 38.9$ ;  $\rho = 1000$  kg/m<sup>3</sup>

Phantom section: Flat Section

DASY4 Configuration:

- Probe: ES3DV3 - SN3165
- ConvF(5.17, 5.17, 5.17); Calibrated: 2009-05-25
- Sensor-Surface: 4mm (Mechanical Surface Detection)
- Electronics: DAE4 Sn555; Calibrated: 2008-11-07
- Phantom: SAM 1; Type: Twin SAM 040 CA; Serial: TP-1449
- Measurement SW: DASY4, V4.7 Build 55; Postprocessing SW: SEMCAD, V1.8 Build 184

**d=15mm, Pin=250mW/Area Scan (61x81x1):** Measurement grid: dx=15mm, dy=15mm

Maximum value of SAR (interpolated) = 11.5 mW/g

**d=15mm, Pin=250mW/Zoom Scan (7x7x7)/Cube 0:** Measurement grid: dx=5mm, dy=5mm, dz=5mm

Reference Value = 91.1 V/m

Peak SAR (extrapolated) = 17.9 W/kg

**SAR(1 g) = 9.63 mW/g**

**SAR(10 g) = 5.05 mW/g**

**Power Drift = -0.177 dB**

Maximum value of SAR (measured) = 10.8 mW/g



Date/Time: 2009-06-09 10:28:13

Test Laboratory: TCC Nokia

Type: D1900V2; Serial: D1900V2 - SN:5d030

**Communication System: CW1900**

Frequency: 1900 MHz; Duty Cycle: 1:1

Medium: HSL1900; Medium Notes: 19.5 C

Medium parameters used:  $f = 1900$  MHz;  $\sigma = 1.43$  mho/m;  $\epsilon_r = 39.4$ ;  $\rho = 1000$  kg/m<sup>3</sup>

Phantom section: Flat Section

DASY4 Configuration:

- Probe: ES3DV3 - SN3131
- ConvF(4.86, 4.86, 4.86); Calibrated: 2009-02-12
- Sensor-Surface: 4mm (Mechanical Surface Detection)
- Electronics: DAE4 Sn555; Calibrated: 2008-11-07
- Phantom: SAM 4; Type: Twin SAM 040 CA; Serial: TP-1018
- Measurement SW: DASY4, V4.7 Build 55; Postprocessing SW: SEMCAD, V1.8 Build 184

**d=15mm, Pin=250mW/Area Scan (61x81x1):** Measurement grid: dx=15mm, dy=15mm

Maximum value of SAR (interpolated) = 12.6 mW/g

**d=15mm, Pin=250mW/Zoom Scan (7x7x7)/Cube 0:** Measurement grid: dx=5mm, dy=5mm, dz=5mm

Reference Value = 91.6 V/m

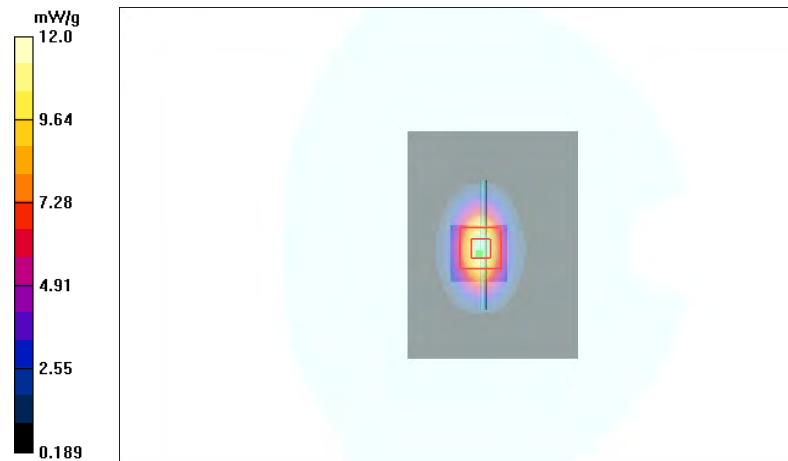
Peak SAR (extrapolated) = 20.6 W/kg

**SAR(1 g) = 10.7 mW/g**

**SAR(10 g) = 5.5 mW/g**

**Power Drift = 0.034 dB**

Maximum value of SAR (measured) = 12.0 mW/g



Date/Time: 2009-06-16 08:54:41

Test Laboratory: TCC Nokia  
Type: D1900V2; Serial: D1900V2 - SN:5d013

**Communication System: CW1900**

Frequency: 1900 MHz; Duty Cycle: 1:1

Medium: HSL1900; Medium Notes: 20.8 C

Medium parameters used:  $f = 1900$  MHz;  $\sigma = 1.43$  mho/m;  $\epsilon_r = 38.1$ ;  $\rho = 1000$  kg/m<sup>3</sup>

Phantom section: Flat Section

**DASY4 Configuration:**

- Probe: ES3DV3 - SN3131
- ConvF(4.86, 4.86, 4.86); Calibrated: 2009-02-12
- Sensor-Surface: 4mm (Mechanical Surface Detection)
- Electronics: DAE4 Sn555; Calibrated: 2008-11-07
- Phantom: SAM 4; Type: Twin SAM 040 CA; Serial: TP-1018
- Measurement SW: DASY4, V4.7 Build 55; Postprocessing SW: SEMCAD, V1.8 Build 184

**d=15mm, Pin=250mW/Area Scan (61x81x1):** Measurement grid: dx=15mm, dy=15mm

Maximum value of SAR (interpolated) = 12.3 mW/g

**d=15mm, Pin=250mW/Zoom Scan (7x7x7)/Cube 0:** Measurement grid: dx=5mm, dy=5mm, dz=5mm

Reference Value = 91.9 V/m

Peak SAR (extrapolated) = 19.6 W/kg

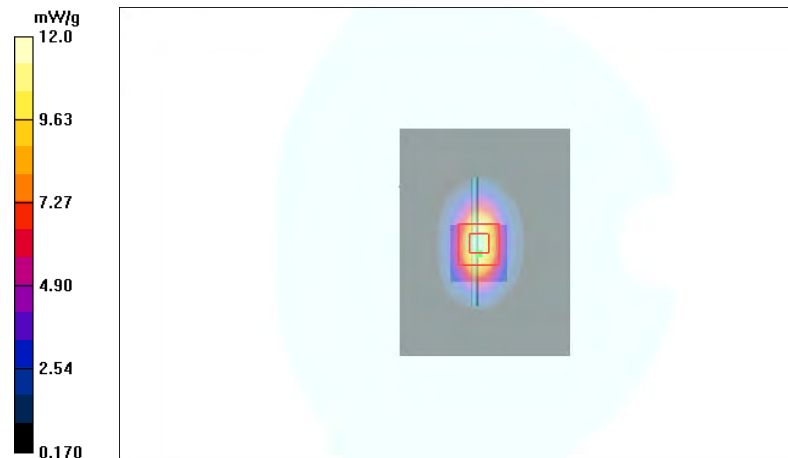
**SAR(1 g) = 10.6 mW/g**

**SAR(10 g) = 5.49 mW/g**

**Power Drift = -0.040 dB**

**Warning:** Maximum averaged SAR over 10 g is located on the boundary of the measurement cube. This cube might not incorporate the absolute averaged SAR. Please consider a refinement of the Area Scan measurement.

Maximum value of SAR (measured) = 12.0 mW/g



Date/Time: 2009-07-01 10:04:44

Test Laboratory: TCC Nokia  
Type: D1900V2; Serial: D1900V2 - SN:5d030

**Communication System: CW1900**

Frequency: 1900 MHz; Duty Cycle: 1:1

Medium: HSL1800; Medium Notes: 21.5 C

Medium parameters used:  $f = 1900$  MHz;  $\sigma = 1.48$  mho/m;  $\epsilon_r = 38.4$ ;  $\rho = 1000$  kg/m<sup>3</sup>

Phantom section: Flat Section

**DASY4 Configuration:**

- Probe: ES3DV3 - SN3165
- ConvF(5, 5, 5); Calibrated: 2009-05-25
- Sensor-Surface: 4mm (Mechanical Surface Detection)
- Electronics: DAE4 Sn555; Calibrated: 2008-11-07
- Phantom: SAM 1; Type: Twin SAM 040 CA; Serial: TP-1449
- Measurement SW: DASY4, V4.7 Build 55; Postprocessing SW: SEMCAD, V1.8 Build 184

**d=15mm, Pin=250mW/Area Scan (61x81x1):** Measurement grid: dx=15mm, dy=15mm

Maximum value of SAR (interpolated) = 12.0 mW/g

**d=15mm, Pin=250mW/Zoom Scan (7x7x7)/Cube 0:** Measurement grid: dx=5mm, dy=5mm, dz=5mm

Reference Value = 90.4 V/m

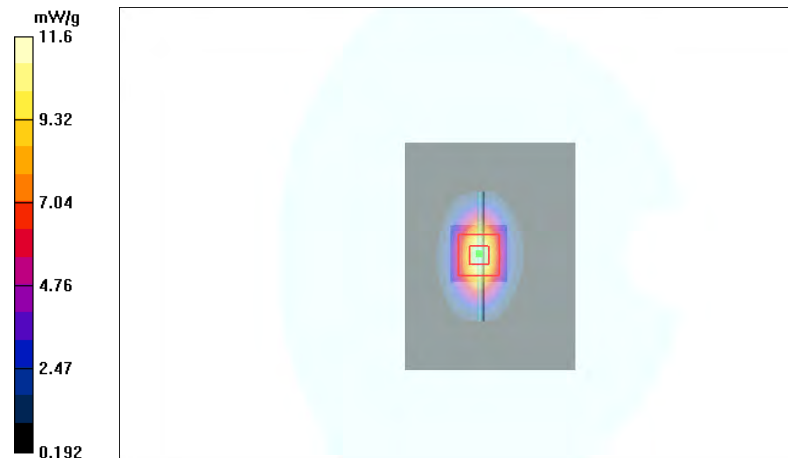
Peak SAR (extrapolated) = 19.1 W/kg

**SAR(1 g) = 10.3 mW/g**

**SAR(10 g) = 5.28 mW/g**

**Power Drift = 0.012 dB**

Maximum value of SAR (measured) = 11.6 mW/g



Date/Time: 2009-06-25 08:50:11

Test Laboratory: TCC Nokia

Type: D2450V2; Serial: D2450V2 - SN:729

**Communication System: CW2450**

Frequency: 2450 MHz; Duty Cycle: 1:1

Medium: HSL2450; Medium Notes: 21.9 C

Medium parameters used:  $f = 2450$  MHz;  $\sigma = 1.89$  mho/m;  $\epsilon_r = 38$ ;  $\rho = 1000$  kg/m<sup>3</sup>

Phantom section: Flat Section

DASY4 Configuration:

- Probe: ES3DV3 - SN3165
- ConvF(4.49, 4.49, 4.49); Calibrated: 2009-05-25
- Sensor-Surface: 4mm (Mechanical Surface Detection)
- Electronics: DAE4 Sn555; Calibrated: 2008-11-07
- Phantom: SAM 1; Type: Twin SAM 040 CA; Serial: TP-1449
- Measurement SW: DASY4, V4.7 Build 55; Postprocessing SW: SEMCAD, V1.8 Build 184

**d=15mm, Pin=250mW/Area Scan (61x81x1):** Measurement grid: dx=15mm, dy=15mm

Maximum value of SAR (interpolated) = 17.2 mW/g

**d=15mm, Pin=250mW/Zoom Scan (7x7x7)/Cube 0:** Measurement grid: dx=5mm, dy=5mm, dz=5mm

Reference Value = 91.7 V/m

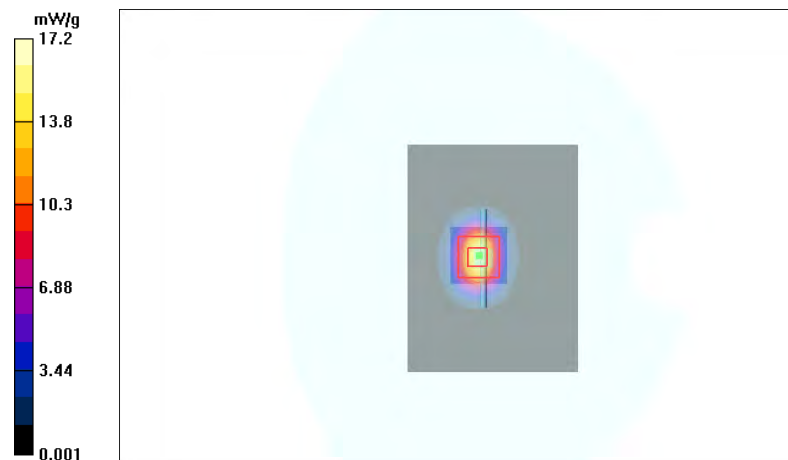
Peak SAR (extrapolated) = 29.3 W/kg

**SAR(1 g) = 14.1 mW/g**

**SAR(10 g) = 6.58 mW/g**

**Power Drift = -0.029 dB**

Maximum value of SAR (measured) = 16.1 mW/g



Date/Time: 2009-07-02 08:34:47

Test Laboratory: TCC Nokia

Type: D2450V2; Serial: D2450V2 - SN:729

**Communication System: CW2450**

Frequency: 2450 MHz; Duty Cycle: 1:1

Medium: BSL2450; Medium Notes: 20.3 C

Medium parameters used:  $f = 2450$  MHz;  $\sigma = 2.02$  mho/m;  $\epsilon_r = 50.6$ ;  $\rho = 1000$  kg/m<sup>3</sup>

Phantom section: Flat Section

DASY4 Configuration:

- Probe: ES3DV3 - SN3165
- ConvF(4.17, 4.17, 4.17); Calibrated: 2009-05-25
- Sensor-Surface: 4mm (Mechanical Surface Detection)
- Electronics: DAE4 Sn555; Calibrated: 2008-11-07
- Phantom: SAM 2; Type: Twin SAM 040 CA; Serial: TP - 1177
- Measurement SW: DASY4, V4.7 Build 55; Postprocessing SW: SEMCAD, V1.8 Build 184

**d=15mm, Pin=250mW/Area Scan (61x81x1):** Measurement grid: dx=15mm, dy=15mm

Maximum value of SAR (interpolated) = 16.3 mW/g

**d=15mm, Pin=250mW/Zoom Scan (7x7x7)/Cube 0:** Measurement grid: dx=5mm, dy=5mm, dz=5mm

Reference Value = 89.0 V/m

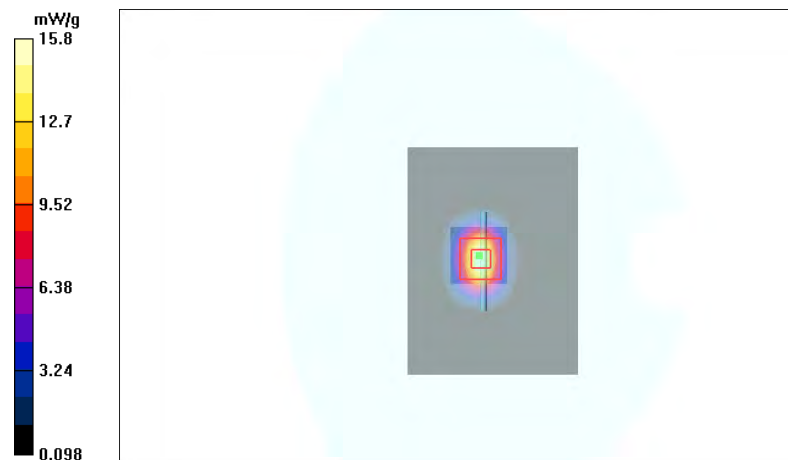
Peak SAR (extrapolated) = 29.0 W/kg

**SAR(1 g) = 13.9 mW/g**

**SAR(10 g) = 6.37 mW/g**

**Power Drift = 0.027 dB**

Maximum value of SAR (measured) = 15.8 mW/g





## APPENDIX B: MEASUREMENT SCANS

Date/Time: 2009-06-29 08:44:21

Test Laboratory: TCC Nokia

Type: RX-51; Serial: 004401/10/715043/1

### Communication System: GSM850

Frequency: 836.6 MHz; Duty Cycle: 1:8.3

Medium: HSL850; Medium Notes: t=20.4 C

Medium parameters used:  $f = 837 \text{ MHz}$ ;  $\sigma = 0.921 \text{ mho/m}$ ;  $\epsilon_r = 40.9$ ;  $\rho = 1000 \text{ kg/m}^3$

Phantom section: Left Section

#### DASY4 Configuration:

- Probe: ET3DV6 - SN1395
- ConvF(5.85, 5.85, 5.85); Calibrated: 2008-07-17
- Sensor-Surface: 4mm (Mechanical Surface Detection)
- Electronics: DAE4 Sn728; Calibrated: 2009-02-09
- Phantom: SAM 3; Type: Twin SAM 040 CA; Serial: TP-1179
- Measurement SW: DASY4, V4.7 Build 55; Postprocessing SW: SEMCAD, V1.8 Build 184

**Cheek position – Middle – Phone Slide Closed – Camera Slide Closed/Area Scan (51x91x1):** Measurement grid:  
dx=15mm, dy=15mm

Maximum value of SAR (interpolated) = 0.205 mW/g

**Cheek position – Middle – Phone Slide Closed – Camera Slide Closed/Zoom Scan (5x5x7)/Cube 0:** Measurement grid: dx=7.5mm, dy=7.5mm, dz=5mm

Reference Value = 6.96 V/m

Peak SAR (extrapolated) = 0.217 W/kg

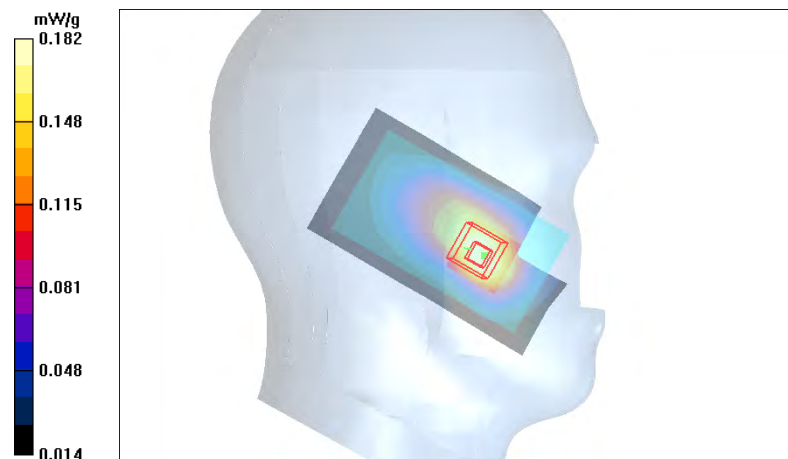
**SAR(1 g) = 0.175 mW/g**

**SAR(10 g) = 0.127 mW/g**

**Power Drift = -0.248 dB**

**Warning:** Maximum averaged SAR over 10 g is located on the boundary of the measurement cube. This cube might not incorporate the absolute averaged SAR. Please consider a refinement of the Area Scan measurement.

Maximum value of SAR (measured) = 0.182 mW/g



Date/Time: 2009-06-29 11:45:17

Test Laboratory: TCC Nokia

Type: RX-51; Serial: 004401/10/715043/1

**Communication System: 2-slot GPRS850**

Frequency: 848.8 MHz; Duty Cycle: 1:4.2

Medium: HSL850; Medium Notes: t=20.4 C

Medium parameters used:  $f = 849 \text{ MHz}$ ;  $\sigma = 0.928 \text{ mho/m}$ ;  $\epsilon_r = 40.8$ ;  $\rho = 1000 \text{ kg/m}^3$

Phantom section: Left Section

DASY4 Configuration:

- Probe: ET3DV6 - SN1395

- ConvF(5.85, 5.85, 5.85); Calibrated: 2008-07-17

- Sensor-Surface: 4mm (Mechanical Surface Detection (Locations From Previous Scan Used))Sensor-Surface: 4mm (Mechanical Surface Detection)

- Electronics: DAE4 Sn728; Calibrated: 2009-02-09

- Phantom: SAM 3; Type: Twin SAM 040 CA; Serial: TP-1179

- Measurement SW: DASY4, V4.7 Build 55; Postprocessing SW: SEMCAD, V1.8 Build 184

**Cheek position - High - Phone Slide Closed - Camera Slide Closed/Area Scan (51x91x1): Measurement grid:**

$dx=15\text{mm}$ ,  $dy=15\text{mm}$

Maximum value of SAR (interpolated) = 0.346 mW/g

**Cheek position - High - Phone Slide Closed - Camera Slide Closed/Zoom Scan (5x5x7)/Cube 0: Measurement**

**grid:  $dx=7.5\text{mm}$ ,  $dy=7.5\text{mm}$ ,  $dz=5\text{mm}$**

Reference Value = 11.2 V/m

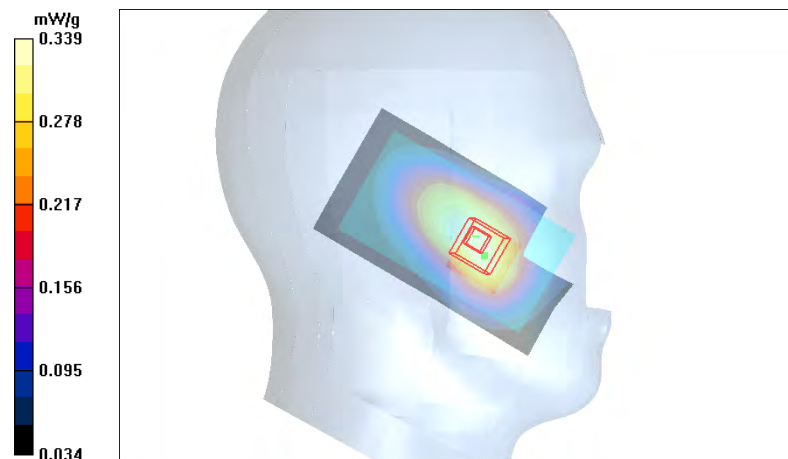
Peak SAR (extrapolated) = 0.373 W/kg

**SAR(1 g) = 0.322 mW/g**

**SAR(10 g) = 0.248 mW/g**

**Power Drift = -0.026 dB**

Maximum value of SAR (measured) = 0.339 mW/g



Date/Time: 2009-06-29 09:44:49

Test Laboratory: TCC Nokia

Type: RX-51; Serial: 004401/10/715043/1

**Communication System: 2-slot GPRS850**

Frequency: 836.6 MHz; Duty Cycle: 1:4.2

Medium: HSL850; Medium Notes: t=20.4 C

Medium parameters used:  $f = 837$  MHz;  $\sigma = 0.921$  mho/m;  $\epsilon_r = 40.9$ ;  $\rho = 1000$  kg/m<sup>3</sup>

Phantom section: Left Section

DASY4 Configuration:

- Probe: ET3DV6 - SN1395

- ConvF(5.85, 5.85, 5.85); Calibrated: 2008-07-17

- Sensor-Surface: 4mm (Mechanical Surface Detection (Locations From Previous Scan Used))Sensor-Surface: 4mm (Mechanical Surface Detection)

- Electronics: DAE4 Sn728; Calibrated: 2009-02-09

- Phantom: SAM 3; Type: Twin SAM 040 CA; Serial: TP-1179

- Measurement SW: DASY4, V4.7 Build 55; Postprocessing SW: SEMCAD, V1.8 Build 184

**Tilt position - Middle - Phone Slide Closed - Camera Slide Closed/Area Scan (51x91x1): Measurement grid:**

dx=15mm, dy=15mm

Maximum value of SAR (interpolated) = 0.274 mW/g

**Tilt position - Middle - Phone Slide Closed - Camera Slide Closed/Zoom Scan (5x5x7)/Cube 0: Measurement grid:**

dx=7.5mm, dy=7.5mm, dz=5mm

Reference Value = 14.4 V/m

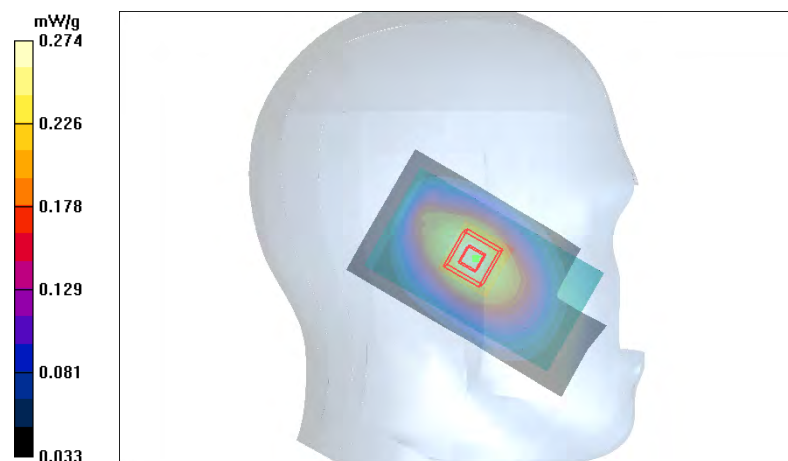
Peak SAR (extrapolated) = 0.316 W/kg

**SAR(1 g) = 0.259 mW/g**

**SAR(10 g) = 0.192 mW/g**

**Power Drift = -0.170 dB**

Maximum value of SAR (measured) = 0.274 mW/g



Date/Time: 2009-06-29 10:17:46

Test Laboratory: TCC Nokia

Type: RX-51; Serial: 004401/10/715043/1

**Communication System: 2-slot GPRS850**

Frequency: 836.6 MHz; Duty Cycle: 1:4.2

Medium: HSL850; Medium Notes: t=20.4 C

Medium parameters used:  $f = 837$  MHz;  $\sigma = 0.921$  mho/m;  $\epsilon_r = 40.9$ ;  $\rho = 1000$  kg/m<sup>3</sup>

Phantom section: Right Section

DASY4 Configuration:

- Probe: ET3DV6 - SN1395
- ConvF(5.85, 5.85, 5.85); Calibrated: 2008-07-17
- Sensor-Surface: 4mm (Mechanical Surface Detection)
- Electronics: DAE4 Sn728; Calibrated: 2009-02-09
- Phantom: SAM 3; Type: Twin SAM 040 CA; Serial: TP-1179
- Measurement SW: DASY4, V4.7 Build 55; Postprocessing SW: SEMCAD, V1.8 Build 184

**Cheek position - Middle – Phone Slide Closed – Camera Slide Closed /Area Scan (51x91x1):** Measurement grid:

dx=15mm, dy=15mm

Maximum value of SAR (interpolated) = 0.235 mW/g

**Cheek position - Middle – Phone Slide Closed – Camera Slide Closed /Zoom Scan (5x5x7)/Cube 0:** Measurement

grid: dx=7.5mm, dy=7.5mm, dz=5mm

Reference Value = 8.81 V/m

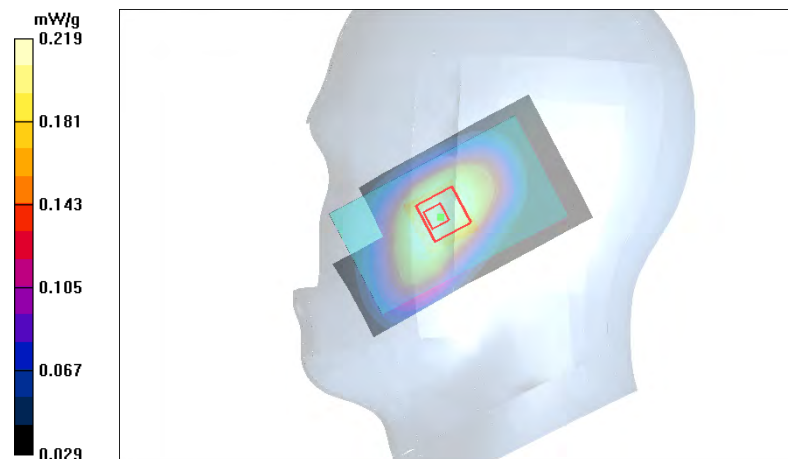
Peak SAR (extrapolated) = 0.245 W/kg

**SAR(1 g) = 0.211 mW/g**

**SAR(10 g) = 0.169 mW/g**

**Power Drift = -0.277 dB**

Maximum value of SAR (measured) = 0.219 mW/g



Date/Time: 2009-06-29 10:31:20

Test Laboratory: TCC Nokia

Type: RX-51; Serial: 004401/10/715043/1

**Communication System: 2-slot GPRS850**

Frequency: 836.6 MHz; Duty Cycle: 1:4.2

Medium: HSL850; Medium Notes: t=20.4 C

Medium parameters used:  $f = 837$  MHz;  $\sigma = 0.921$  mho/m;  $\epsilon_r = 40.9$ ;  $\rho = 1000$  kg/m<sup>3</sup>

Phantom section: Right Section

DASY4 Configuration:

- Probe: ET3DV6 - SN1395

- ConvF(5.85, 5.85, 5.85); Calibrated: 2008-07-17

- Sensor-Surface: 4mm (Mechanical Surface Detection (Locations From Previous Scan Used))Sensor-Surface: 4mm (Mechanical Surface Detection)

- Electronics: DAE4 Sn728; Calibrated: 2009-02-09

- Phantom: SAM 3; Type: Twin SAM 040 CA; Serial: TP-1179

- Measurement SW: DASY4, V4.7 Build 55; Postprocessing SW: SEMCAD, V1.8 Build 184

**Tilt position - Middle – Phone Slide Closed – Camera Slide Closed /Area Scan (51x91x1):** Measurement grid:

dx=15mm, dy=15mm

Maximum value of SAR (interpolated) = 0.214 mW/g

**Tilt position - Middle – Phone Slide Closed – Camera Slide Closed /Zoom Scan (5x5x7)/Cube 0:** Measurement

grid: dx=7.5mm, dy=7.5mm, dz=5mm

Reference Value = 12.3 V/m

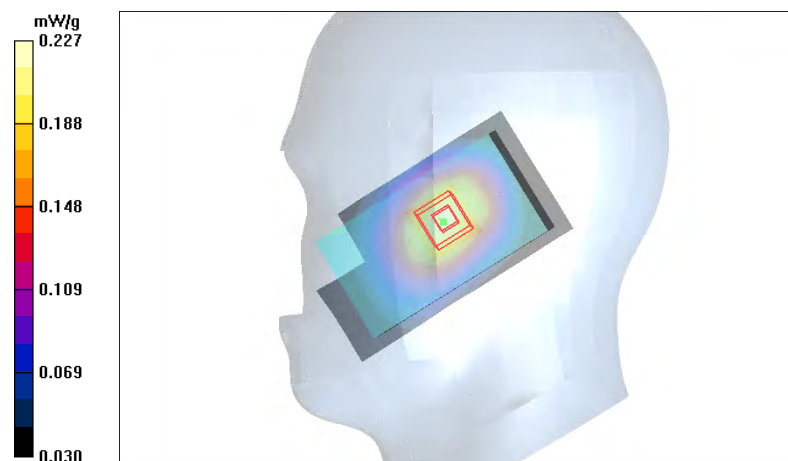
Peak SAR (extrapolated) = 0.264 W/kg

**SAR(1 g) = 0.213 mW/g**

**SAR(10 g) = 0.159 mW/g**

**Power Drift = 0.472 dB**

Maximum value of SAR (measured) = 0.227 mW/g



Date/Time: 2009-06-29 09:26:38

Test Laboratory: TCC Nokia

Type: RX-51; Serial: 004401/10/715043/1

**Communication System: 3-slot GPRS850**

Frequency: 836.6 MHz; Duty Cycle: 1:2.8

Medium: HSL850; Medium Notes: t=20.4 C

Medium parameters used:  $f = 837$  MHz;  $\sigma = 0.921$  mho/m;  $\epsilon_r = 40.9$ ;  $\rho = 1000$  kg/m<sup>3</sup>

Phantom section: Left Section

DASY4 Configuration:

- Probe: ET3DV6 - SN1395
- ConvF(5.85, 5.85, 5.85); Calibrated: 2008-07-17
- Sensor-Surface: 4mm (Mechanical Surface Detection)
- Electronics: DAE4 Sn728; Calibrated: 2009-02-09
- Phantom: SAM 3; Type: Twin SAM 040 CA; Serial: TP-1179
- Measurement SW: DASY4, V4.7 Build 55; Postprocessing SW: SEMCAD, V1.8 Build 184

**Cheek position – Middle - Phone Slide Closed - Camera Slide Closed /Area Scan (51x91x1):** Measurement grid:

dx=15mm, dy=15mm

Maximum value of SAR (interpolated) = 0.293 mW/g

**Cheek position – Middle - Phone Slide Closed - Camera Slide Closed /Zoom Scan (5x5x7)/Cube 0:** Measurement

grid: dx=7.5mm, dy=7.5mm, dz=5mm

Reference Value = 8.30 V/m

Peak SAR (extrapolated) = 0.322 W/kg

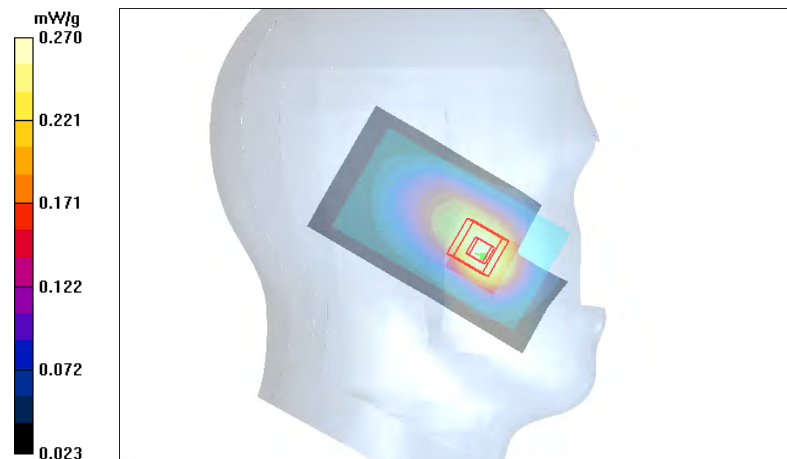
**SAR(1 g) = 0.257 mW/g**

**SAR(10 g) = 0.190 mW/g**

**Power Drift = 0.037 dB**

Warning: Maximum averaged SAR over 10 g is located on the boundary of the measurement cube. This cube might not incorporate the absolute averaged SAR. Please consider a refinement of the Area Scan measurement.

Maximum value of SAR (measured) = 0.270 mW/g



Date/Time: 2009-06-29 13:03:36

Test Laboratory: TCC Nokia

Type: RX-51; Serial: 004401/10/715043/1

**Communication System: 2-slot 8PSK EGPRS850**

Frequency: 848.8 MHz; Duty Cycle: 1:4.2

Medium: HSL850; Medium Notes: t=20.4 C

Medium parameters used:  $f = 849 \text{ MHz}$ ;  $\sigma = 0.928 \text{ mho/m}$ ;  $\epsilon_r = 40.8$ ;  $\rho = 1000 \text{ kg/m}^3$

Phantom section: Left Section

DASY4 Configuration:

- Probe: ET3DV6 - SN1395
- ConvF(5.85, 5.85, 5.85); Calibrated: 2008-07-17
- Sensor-Surface: 4mm (Mechanical Surface Detection)
- Electronics: DAE4 Sn728; Calibrated: 2009-02-09
- Phantom: SAM 3; Type: Twin SAM 040 CA; Serial: TP-1179
- Measurement SW: DASY4, V4.7 Build 55; Postprocessing SW: SEMCAD, V1.8 Build 184

**Cheek position - High - Phone Slide Closed - Camera Slide Closed/Area Scan (51x91x1): Measurement grid:**

$dx=15\text{mm}$ ,  $dy=15\text{mm}$

Maximum value of SAR (interpolated) = 0.031 mW/g

**Cheek position - High - Phone Slide Closed - Camera Slide Closed/Zoom Scan (5x5x7)/Cube 0: Measurement**

grid:  $dx=7.5\text{mm}$ ,  $dy=7.5\text{mm}$ ,  $dz=5\text{mm}$

Reference Value = 3.15 V/m

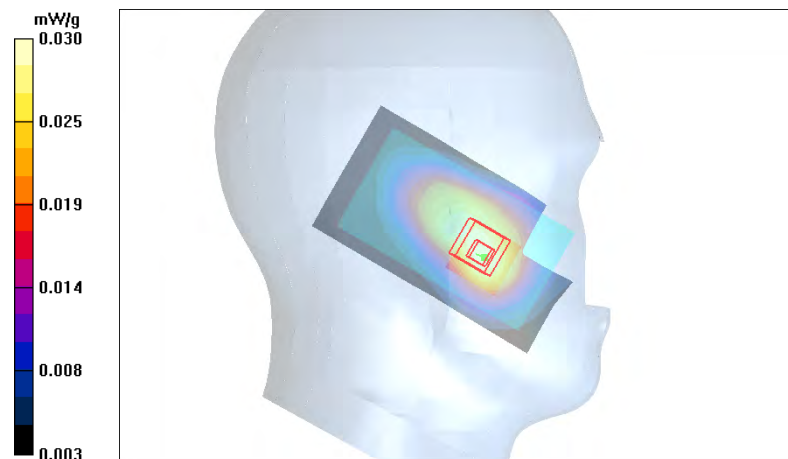
Peak SAR (extrapolated) = 0.035 W/kg

**SAR(1 g) = 0.029 mW/g**

**SAR(10 g) = 0.022 mW/g**

**Power Drift = 0.139 dB**

Maximum value of SAR (measured) = 0.030 mW/g





Date/Time: 2009-06-29 12:25:28

Test Laboratory: TCC Nokia

Type: RX-51; Serial: 004401/10/715043/1

**Communication System: 2-slot GPRS850**

Frequency: 848.8 MHz; Duty Cycle: 1:4.2

Medium: HSL850; Medium Notes: t=20.4 C

Medium parameters used:  $f = 849$  MHz;  $\sigma = 0.928$  mho/m;  $\epsilon_r = 40.8$ ;  $\rho = 1000$  kg/m<sup>3</sup>

Phantom section: Left Section

DASY4 Configuration:

- Probe: ET3DV6 - SN1395

- ConvF(5.85, 5.85, 5.85); Calibrated: 2008-07-17

- Sensor-Surface: 4mm (Mechanical Surface Detection (Locations From Previous Scan Used))Sensor-Surface: 4mm (Mechanical Surface Detection)

- Electronics: DAE4 Sn728; Calibrated: 2009-02-09

- Phantom: SAM 3; Type: Twin SAM 040 CA; Serial: TP-1179

- Measurement SW: DASY4, V4.7 Build 55; Postprocessing SW: SEMCAD, V1.8 Build 184

**Cheek position - High - Phone Slide Closed - Camera Slide Open/Area Scan (51x91x1): Measurement grid:**

dx=15mm, dy=15mm

Maximum value of SAR (interpolated) = 0.433 mW/g

**Cheek position - High - Phone Slide Closed - Camera Slide Open/Zoom Scan 3 (5x5x7)/Cube 0: Measurement grid: dx=7.5mm, dy=7.5mm, dz=5mm**

Reference Value = 9.69 V/m

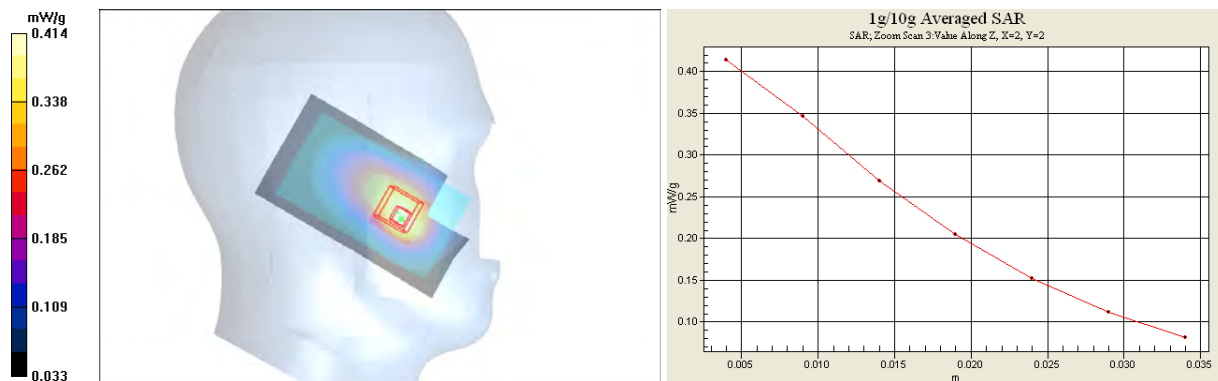
Peak SAR (extrapolated) = 0.494 W/kg

**SAR(1 g) = 0.394 mW/g**

**SAR(10 g) = 0.287 mW/g**

**Power Drift = -0.177 dB**

Maximum value of SAR (measured) = 0.414 mW/g





Date/Time: 2009-06-26 12:28:58

Test Laboratory: TCC Nokia

Type: RX-51; Serial: 004401/10/715043/1

Communication System: WCDMA1700/2100

Frequency: 1712.4 MHz; Duty Cycle: 1:1

Medium: HSL1800; Medium Notes: 21.7 C

Medium parameters used (interpolated):  $f = 1712.4$  MHz;  $\sigma = 1.29$  mho/m;  $\epsilon_r = 39.4$ ;  $\rho = 1000$  kg/m<sup>3</sup>

Phantom section: Left Section

DASY4 Configuration:

- Probe: ES3DV3 - SN3165

- ConvF(5.17, 5.17, 5.17); Calibrated: 2009-05-25

- Sensor-Surface: 4mm (Mechanical Surface Detection (Locations From Previous Scan Used))Sensor-Surface: 4mm (Mechanical Surface Detection)

- Electronics: DAE4 Sn555; Calibrated: 2008-11-07

- Phantom: SAM 1; Type: Twin SAM 040 CA; Serial: TP-1449

- Measurement SW: DASY4, V4.7 Build 55; Postprocessing SW: SEMCAD, V1.8 Build 184

Cheek position - Low – Phone Slide Closed – Camera Slide Closed /Area Scan (51x91x1): Measurement grid:

dx=15mm, dy=15mm

Maximum value of SAR (interpolated) = 0.433 mW/g

Cheek position - Low – Phone Slide Closed – Camera Slide Closed /Zoom Scan (5x5x7)/Cube 0: Measurement

grid: dx=7.5mm, dy=7.5mm, dz=5mm

Reference Value = 8.20 V/m

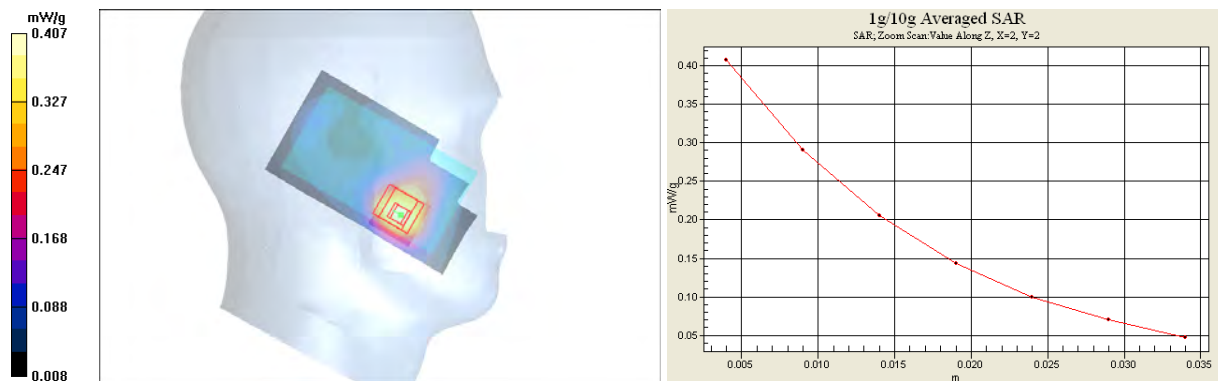
Peak SAR (extrapolated) = 0.538 W/kg

**SAR(1 g) = 0.369 mW/g**

**SAR(10 g) = 0.235 mW/g**

**Power Drift = -0.083 dB**

Maximum value of SAR (measured) = 0.407 mW/g



SAR Report

FCC\_RX-51\_01

Applicant: Nokia Corporation

Type: RX-51

Copyright © 2009 TCC Nokia

Date/Time: 2009-06-26 09:07:24

Test Laboratory: TCC Nokia

Type: RX-51; Serial: 004401/10/715043/1

**Communication System: WCDMA1700/2100**

Frequency: 1732.4 MHz; Duty Cycle: 1:1

Medium: HSL1800; Medium Notes: 21.7 C

Medium parameters used (interpolated):  $f = 1732.4$  MHz;  $\sigma = 1.31$  mho/m;  $\epsilon_r = 39.3$ ;  $\rho = 1000$  kg/m<sup>3</sup>

Phantom section: Left Section

DASY4 Configuration:

- Probe: ES3DV3 - SN3165
- ConvF(5.17, 5.17, 5.17); Calibrated: 2009-05-25
- Sensor-Surface: 4mm (Mechanical Surface Detection)
- Electronics: DAE4 Sn555; Calibrated: 2008-11-07
- Phantom: SAM 1; Type: Twin SAM 040 CA; Serial: TP-1449
- Measurement SW: DASY4, V4.7 Build 55; Postprocessing SW: SEMCAD, V1.8 Build 184

**Tilt position - Middle – Phone Slide Closed – Camera Slide Closed /Area Scan (61x91x1):** Measurement grid:

dx=15mm, dy=15mm

Maximum value of SAR (interpolated) = 0.257 mW/g

**Tilt position - Middle – Phone Slide Closed – Camera Slide Closed /Zoom Scan (5x5x7)/Cube 0:** Measurement

grid: dx=7.5mm, dy=7.5mm, dz=5mm

Reference Value = 11.6 V/m

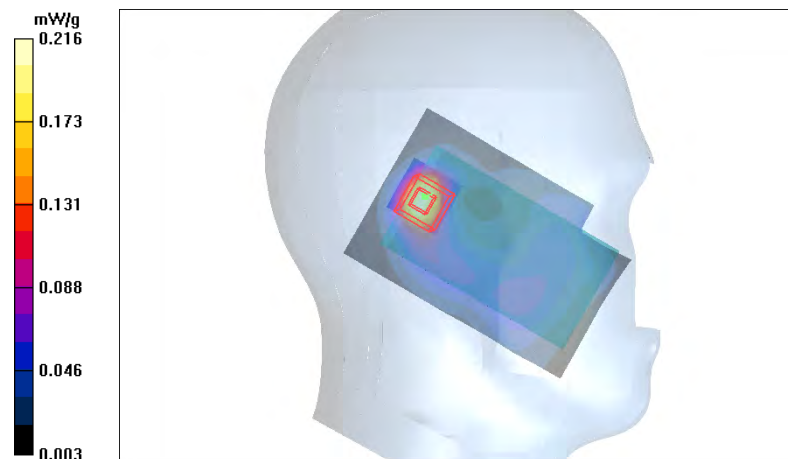
Peak SAR (extrapolated) = 0.332 W/kg

**SAR(1 g) = 0.195 mW/g**

**SAR(10 g) = 0.104 mW/g**

**Power Drift = -0.330 dB**

Maximum value of SAR (measured) = 0.216 mW/g



Date/Time: 2009-06-26 09:59:37

Test Laboratory: TCC Nokia

Type: RX-51; Serial: 004401/10/715043/1

**Communication System: WCDMA1700/2100**

Frequency: 1732.4 MHz; Duty Cycle: 1:1

Medium: HSL1800; Medium Notes: 21.7 C

Medium parameters used (interpolated):  $f = 1732.4$  MHz;  $\sigma = 1.31$  mho/m;  $\epsilon_r = 39.3$ ;  $\rho = 1000$  kg/m<sup>3</sup>

Phantom section: Right Section

DASY4 Configuration:

- Probe: ES3DV3 - SN3165
- ConvF(5.17, 5.17, 5.17); Calibrated: 2009-05-25
- Sensor-Surface: 4mm (Mechanical Surface Detection)
- Electronics: DAE4 Sn555; Calibrated: 2008-11-07
- Phantom: SAM 1; Type: Twin SAM 040 CA; Serial: TP-1449
- Measurement SW: DASY4, V4.7 Build 55; Postprocessing SW: SEMCAD, V1.8 Build 184

**Cheek position - Middle – Phone Slide Closed – Camera Slide Closed /Area Scan (51x91x1): Measurement grid:**

$dx=15$ mm,  $dy=15$ mm

Maximum value of SAR (interpolated) = 0.257 mW/g

**Cheek position - Middle – Phone Slide Closed – Camera Slide Closed /Zoom Scan (5x5x7)/Cube 0: Measurement**

grid:  $dx=7.5$ mm,  $dy=7.5$ mm,  $dz=5$ mm

Reference Value = 6.92 V/m

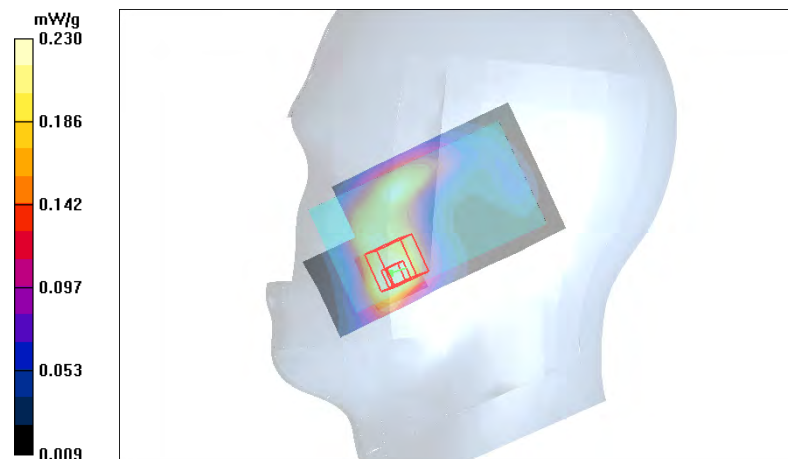
Peak SAR (extrapolated) = 0.329 W/kg

**SAR(1 g) = 0.220 mW/g**

**SAR(10 g) = 0.144 mW/g**

**Power Drift = 0.177 dB**

Maximum value of SAR (measured) = 0.230 mW/g



Date/Time: 2009-06-26 09:42:56

Test Laboratory: TCC Nokia

Type: RX-51; Serial: 004401/10/715043/1

**Communication System: WCDMA1700/2100**

Frequency: 1732.4 MHz; Duty Cycle: 1:1

Medium: HSL1800; Medium Notes: 21.7 C

Medium parameters used (interpolated):  $f = 1732.4$  MHz;  $\sigma = 1.31$  mho/m;  $\epsilon_r = 39.3$ ;  $\rho = 1000$  kg/m<sup>3</sup>

Phantom section: Right Section

DASY4 Configuration:

- Probe: ES3DV3 - SN3165
- ConvF(5.17, 5.17, 5.17); Calibrated: 2009-05-25
- Sensor-Surface: 4mm (Mechanical Surface Detection)
- Electronics: DAE4 Sn555; Calibrated: 2008-11-07
- Phantom: SAM 1; Type: Twin SAM 040 CA; Serial: TP-1449
- Measurement SW: DASY4, V4.7 Build 55; Postprocessing SW: SEMCAD, V1.8 Build 184

**Tilt position - Middle – Phone Slide Closed – Camera Slide Closed /Area Scan (61x91x1):** Measurement grid:

dx=15mm, dy=15mm

Maximum value of SAR (interpolated) = 0.215 mW/g

**Tilt position - Middle – Phone Slide Closed – Camera Slide Closed /Zoom Scan (5x5x7)/Cube 0:** Measurement

grid: dx=7.5mm, dy=7.5mm, dz=5mm

Reference Value = 11.6 V/m

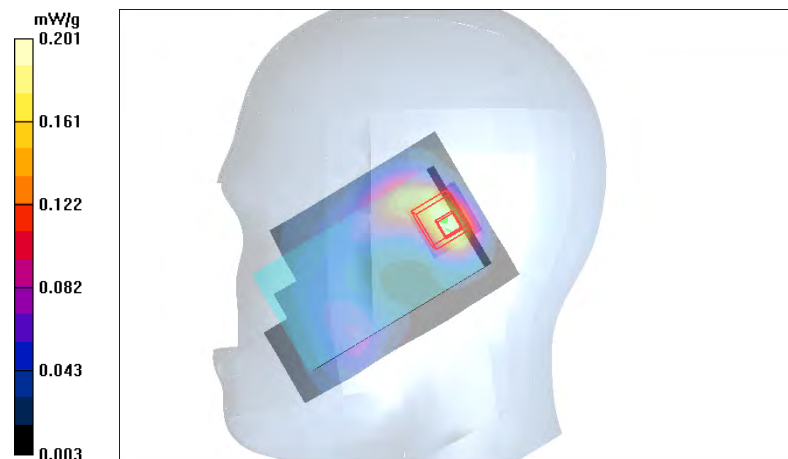
Peak SAR (extrapolated) = 0.315 W/kg

**SAR(1 g) = 0.185 mW/g**

**SAR(10 g) = 0.106 mW/g**

**Power Drift = -0.067 dB**

Maximum value of SAR (measured) = 0.201 mW/g



Date/Time: 2009-06-26 13:01:39

Test Laboratory: TCC Nokia

Type: RX-51; Serial: 004401/10/715043/1

**Communication System: WCDMA1700/2100**

Frequency: 1752.6 MHz; Duty Cycle: 1:1

Medium: HSL1800; Medium Notes: 21.7 C

Medium parameters used:  $f = 1753$  MHz;  $\sigma = 1.33$  mho/m;  $\epsilon_r = 39.2$ ;  $\rho = 1000$  kg/m<sup>3</sup>

Phantom section: Left Section

DASY4 Configuration:

- Probe: ES3DV3 - SN3165
- ConvF(5.17, 5.17, 5.17); Calibrated: 2009-05-25
- Sensor-Surface: 4mm (Mechanical Surface Detection (Locations From Previous Scan Used))Sensor-Surface: 4mm (Mechanical Surface Detection)
- Electronics: DAE4 Sn555; Calibrated: 2008-11-07
- Phantom: SAM 1; Type: Twin SAM 040 CA; Serial: TP-1449
- Measurement SW: DASY4, V4.7 Build 55; Postprocessing SW: SEMCAD, V1.8 Build 184

**Cheek position - High - Phone Slide Closed – Camera slide open/Area Scan (51x91x1): Measurement grid:**

dx=15mm, dy=15mm

Maximum value of SAR (interpolated) = 0.436 mW/g

**Cheek position - High - Phone Slide Closed – Camera slide open/Zoom Scan (5x5x7)/Cube 0: Measurement grid:**

dx=7.5mm, dy=7.5mm, dz=5mm

Reference Value = 4.69 V/m

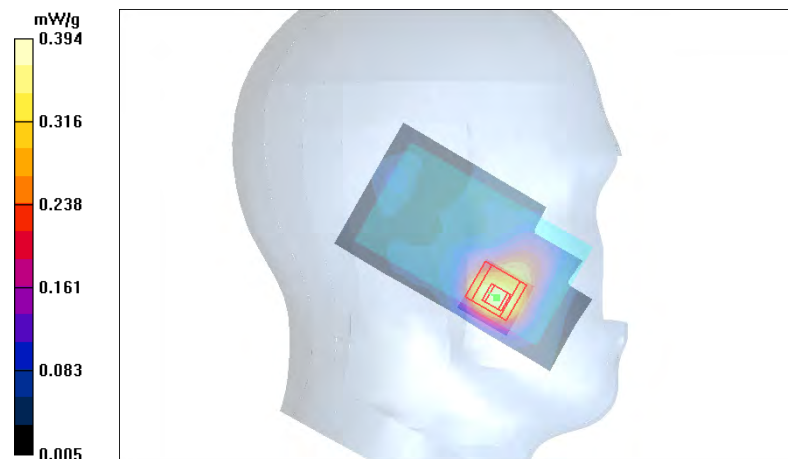
Peak SAR (extrapolated) = 0.526 W/kg

**SAR(1 g) = 0.358 mW/g**

**SAR(10 g) = 0.225 mW/g**

**Power Drift = 0.265 dB**

Maximum value of SAR (measured) = 0.394 mW/g



Date/Time: 2009-06-09 12:09:29

Test Laboratory: TCC Nokia

Type: RX-51; Serial: 004401/10/715043/1

**Communication System: GSM1900**

Frequency: 1880 MHz; Duty Cycle: 1:8.3

Medium: HSL1900; Medium Notes: 20 C

Medium parameters used:  $f = 1880$  MHz;  $\sigma = 1.41$  mho/m;  $\epsilon_r = 39.5$ ;  $\rho = 1000$  kg/m<sup>3</sup>

Phantom section: Left Section

DASY4 Configuration:

- Probe: ES3DV3 - SN3131
- ConvF(4.86, 4.86, 4.86); Calibrated: 2009-02-12
- Sensor-Surface: 4mm (Mechanical Surface Detection)
- Electronics: DAE4 Sn555; Calibrated: 2008-11-07
- Phantom: SAM 4; Type: Twin SAM 040 CA; Serial: TP-1018
- Measurement SW: DASY4, V4.7 Build 55; Postprocessing SW: SEMCAD, V1.8 Build 184

**Cheek position - Middle – Phone Slide Closed – Camera Slide Closed /Area Scan (51x91x1): Measurement grid:**

$dx=15$ mm,  $dy=15$ mm

Maximum value of SAR (interpolated) = 0.276 mW/g

**Cheek position - Middle – Phone Slide Closed – Camera Slide Closed /Zoom Scan (5x5x7)/Cube 0: Measurement**

grid:  $dx=7.5$ mm,  $dy=7.5$ mm,  $dz=5$ mm

Reference Value = 6.20 V/m

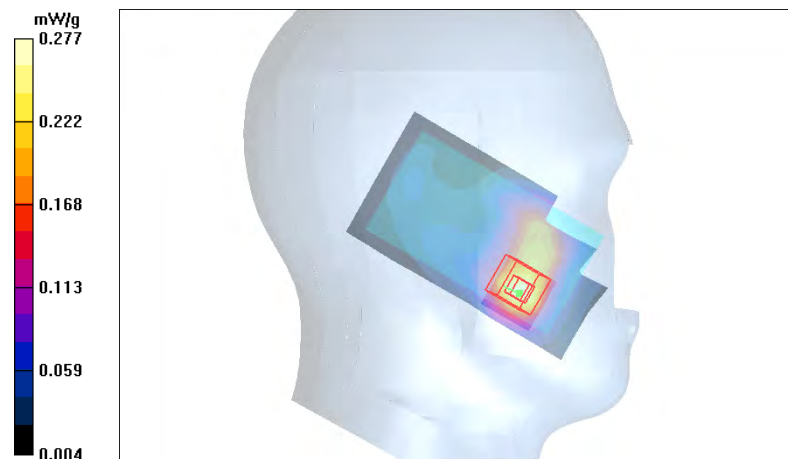
Peak SAR (extrapolated) = 0.388 W/kg

**SAR(1 g) = 0.256 mW/g**

**SAR(10 g) = 0.154 mW/g**

**Power Drift = 0.079 dB**

Maximum value of SAR (measured) = 0.277 mW/g



Date/Time: 2009-06-09 12:30:08

Test Laboratory: TCC Nokia

Type: RX-51; Serial: 004401/10/715043/1

**Communication System: 2-slot GPRS1900**

Frequency: 1880 MHz; Duty Cycle: 1:4.2

Medium: HSL1900; Medium Notes: 20 C

Medium parameters used:  $f = 1880$  MHz;  $\sigma = 1.41$  mho/m;  $\epsilon_r = 39.5$ ;  $\rho = 1000$  kg/m<sup>3</sup>

Phantom section: Left Section

DASY4 Configuration:

- Probe: ES3DV3 - SN3131
- ConvF(4.86, 4.86, 4.86); Calibrated: 2009-02-12
- Sensor-Surface: 4mm (Mechanical Surface Detection)
- Electronics: DAE4 Sn555; Calibrated: 2008-11-07
- Phantom: SAM 4; Type: Twin SAM 040 CA; Serial: TP-1018
- Measurement SW: DASY4, V4.7 Build 55; Postprocessing SW: SEMCAD, V1.8 Build 184

**Cheek position - Middle - Phone Slide Closed – Camera Slide Closed /Area Scan (51x91x1): Measurement grid:**

dx=15mm, dy=15mm

Maximum value of SAR (interpolated) = 0.508 mW/g

**Cheek position - Middle - Phone Slide Closed – Camera Slide Closed /Zoom Scan (5x5x7)/Cube 0: Measurement**

grid: dx=7.5mm, dy=7.5mm, dz=5mm

Reference Value = 8.59 V/m

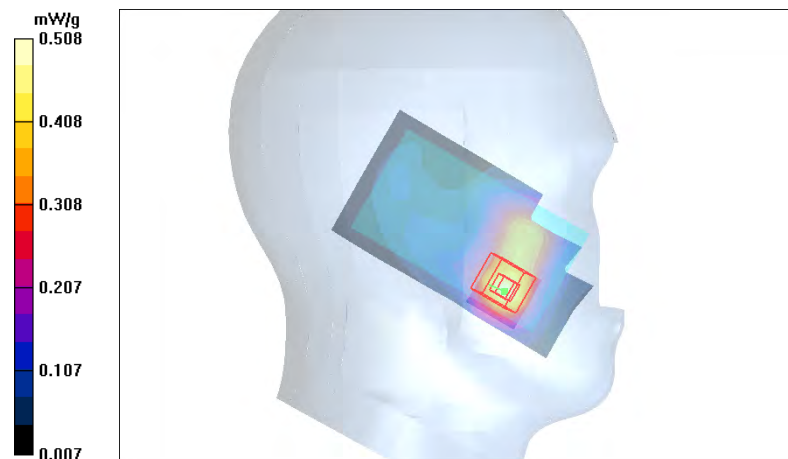
Peak SAR (extrapolated) = 0.695 W/kg

**SAR(1 g) = 0.462 mW/g**

**SAR(10 g) = 0.284 mW/g**

**Power Drift = 0.115 dB**

Maximum value of SAR (measured) = 0.508 mW/g





Date/Time: 2009-06-09 12:52:07

Test Laboratory: TCC Nokia

Type: RX-51; Serial: 004401/10/715043/1

**Communication System: 3-slot GPRS1900**

Frequency: 1880 MHz; Duty Cycle: 1:2.8

Medium: HSL1900; Medium Notes: 20 C

Medium parameters used:  $f = 1880$  MHz;  $\sigma = 1.41$  mho/m;  $\epsilon_r = 39.5$ ;  $\rho = 1000$  kg/m<sup>3</sup>

Phantom section: Left Section

DASY4 Configuration:

- Probe: ES3DV3 - SN3131
- ConvF(4.86, 4.86, 4.86); Calibrated: 2009-02-12
- Sensor-Surface: 4mm (Mechanical Surface Detection)
- Electronics: DAE4 Sn555; Calibrated: 2008-11-07
- Phantom: SAM 4; Type: Twin SAM 040 CA; Serial: TP-1018
- Measurement SW: DASY4, V4.7 Build 55; Postprocessing SW: SEMCAD, V1.8 Build 184

**Cheek position - Middle - Phone Slide Closed – Camera Slide Closed /Area Scan (51x91x1): Measurement grid:**

dx=15mm, dy=15mm

Maximum value of SAR (interpolated) = 0.524 mW/g

**Cheek position - Middle - Phone Slide Closed – Camera Slide Closed /Zoom Scan (5x5x7)/Cube 0: Measurement**

grid: dx=7.5mm, dy=7.5mm, dz=5mm

Reference Value = 8.63 V/m

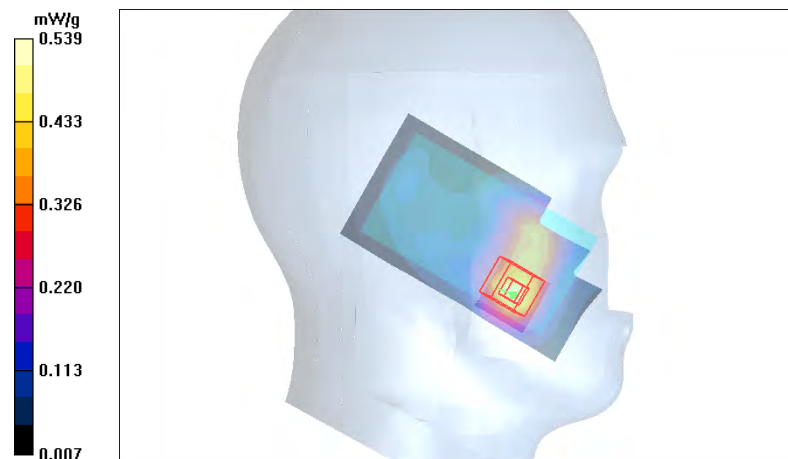
Peak SAR (extrapolated) = 0.729 W/kg

**SAR(1 g) = 0.475 mW/g**

**SAR(10 g) = 0.287 mW/g**

**Power Drift = 0.031 dB**

Maximum value of SAR (measured) = 0.539 mW/g





Date/Time: 2009-06-09 13:29:49

Test Laboratory: TCC Nokia

Type: RX-51; Serial: 004401/10/715043/1

**Communication System: 3-slot GPRS1900**

Frequency: 1880 MHz; Duty Cycle: 1:2.8

Medium: HSL1900; Medium Notes: 20 C

Medium parameters used:  $f = 1880$  MHz;  $\sigma = 1.41$  mho/m;  $\epsilon_r = 39.5$ ;  $\rho = 1000$  kg/m<sup>3</sup>

Phantom section: Left Section

**DASY4 Configuration:**

- Probe: ES3DV3 - SN3131
- ConvF(4.86, 4.86, 4.86); Calibrated: 2009-02-12
- Sensor-Surface: 4mm (Mechanical Surface Detection (Locations From Previous Scan Used))Sensor-Surface: 4mm (Mechanical Surface Detection)
- Electronics: DAE4 Sn555; Calibrated: 2008-11-07
- Phantom: SAM 4; Type: Twin SAM 040 CA; Serial: TP-1018
- Measurement SW: DASY4, V4.7 Build 55; Postprocessing SW: SEMCAD, V1.8 Build 184

**Tilt position - Middle - Phone Slide Closed – Camera Slide Closed /Area Scan (51x91x1): Measurement grid:**

dx=15mm, dy=15mm

Maximum value of SAR (interpolated) = 0.251 mW/g

**Tilt position - Middle - Phone Slide Closed – Camera Slide Closed /Zoom Scan (5x5x7)/Cube 0: Measurement**

grid: dx=7.5mm, dy=7.5mm, dz=5mm

Reference Value = 11.0 V/m

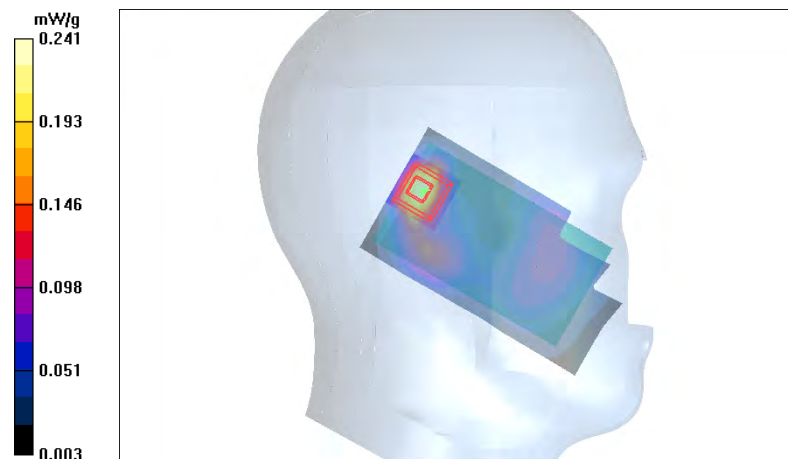
Peak SAR (extrapolated) = 0.378 W/kg

**SAR(1 g) = 0.215 mW/g**

**SAR(10 g) = 0.111 mW/g**

**Power Drift = 0.016 dB**

Maximum value of SAR (measured) = 0.241 mW/g



Date/Time: 2009-06-09 15:03:12

Test Laboratory: TCC Nokia

Type: RX-51; Serial: 004401/10/715043/1

**Communication System: 3-slot GPRS1900**

Frequency: 1909.8 MHz; Duty Cycle: 1:2.8

Medium: HSL1900; Medium Notes: 19.5 C

Medium parameters used:  $f = 1910$  MHz;  $\sigma = 1.44$  mho/m;  $\epsilon_r = 39.4$ ;  $\rho = 1000$  kg/m<sup>3</sup>

Phantom section: Right Section

DASY4 Configuration:

- Probe: ES3DV3 - SN3131

- ConvF(4.86, 4.86, 4.86); Calibrated: 2009-02-12

- Sensor-Surface: 4mm (Mechanical Surface Detection (Locations From Previous Scan Used))Sensor-Surface: 4mm (Mechanical Surface Detection)

- Electronics: DAE4 Sn555; Calibrated: 2008-11-07

- Phantom: SAM 4; Type: Twin SAM 040 CA; Serial: TP-1018

- Measurement SW: DASY4, V4.7 Build 55; Postprocessing SW: SEMCAD, V1.8 Build 184

**Cheek position - High - Phone Slide Closed – Camera Slide Closed /Area Scan (51x91x1): Measurement grid:**

dx=15mm, dy=15mm

Maximum value of SAR (interpolated) = 0.722 mW/g

**Cheek position - High - Phone Slide Closed – Camera Slide Closed /Zoom Scan (5x5x7)/Cube 0: Measurement**

grid: dx=7.5mm, dy=7.5mm, dz=5mm

Reference Value = 7.87 V/m

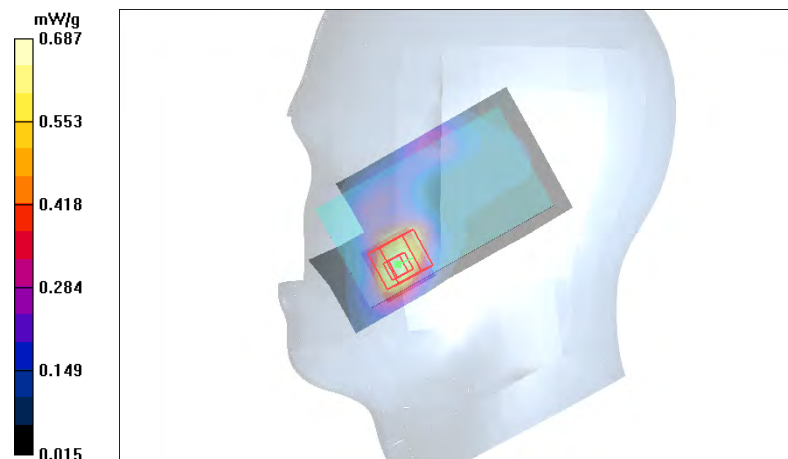
Peak SAR (extrapolated) = 1.06 W/kg

**SAR(1 g) = 0.622 mW/g**

**SAR(10 g) = 0.352 mW/g**

**Power Drift = 0.281 dB**

Maximum value of SAR (measured) = 0.687 mW/g



Date/Time: 2009-06-09 14:14:14

Test Laboratory: TCC Nokia

Type: RX-51; Serial: 004401/10/715043/1

**Communication System: 3-slot GPRS1900**

Frequency: 1880 MHz; Duty Cycle: 1:2.8

Medium: HSL1900; Medium Notes: 19.5 C

Medium parameters used:  $f = 1880$  MHz;  $\sigma = 1.41$  mho/m;  $\epsilon_r = 39.5$ ;  $\rho = 1000$  kg/m<sup>3</sup>

Phantom section: Right Section

DASY4 Configuration:

- Probe: ES3DV3 - SN3131
- ConvF(4.86, 4.86, 4.86); Calibrated: 2009-02-12
- Sensor-Surface: 4mm (Mechanical Surface Detection)
- Electronics: DAE4 Sn555; Calibrated: 2008-11-07
- Phantom: SAM 4; Type: Twin SAM 040 CA; Serial: TP-1018
- Measurement SW: DASY4, V4.7 Build 55; Postprocessing SW: SEMCAD, V1.8 Build 184

**Tilt position - Middle - Phone Slide Closed – Camera Slide Closed /Area Scan (41x81x1): Measurement grid:**

dx=15mm, dy=15mm

Maximum value of SAR (interpolated) = 0.276 mW/g

**Tilt position - Middle - Phone Slide Closed – Camera Slide Closed /Zoom Scan (5x5x7)/Cube 0: Measurement**

grid: dx=7.5mm, dy=7.5mm, dz=5mm

Reference Value = 11.0 V/m

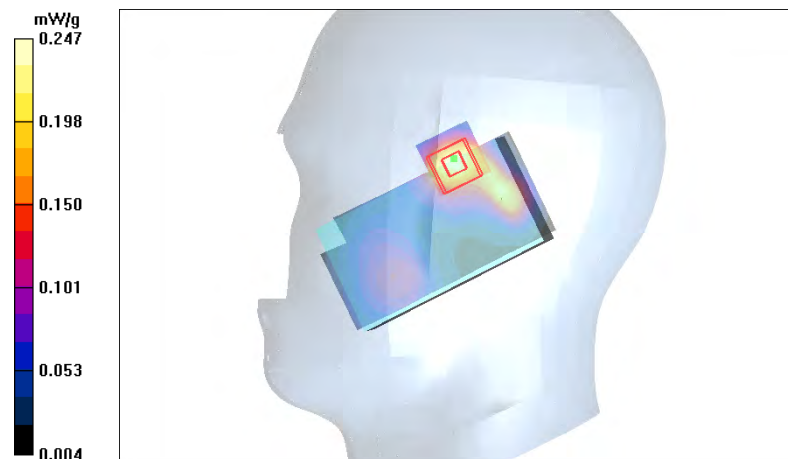
Peak SAR (extrapolated) = 0.379 W/kg

**SAR(1 g) = 0.229 mW/g**

**SAR(10 g) = 0.131 mW/g**

**Power Drift = 0.130 dB**

Maximum value of SAR (measured) = 0.247 mW/g



Date/Time: 2009-06-16 09:59:00

Test Laboratory: TCC Nokia

Type: RX-51; Serial: 004401/10/715043/1

**Communication System: 3-slot 8PSK EGPRS1900**

Frequency: 1909.8 MHz; Duty Cycle: 1:2.8

Medium: HSL1900; Medium Notes: 20.8 C

Medium parameters used:  $f = 1910$  MHz;  $\sigma = 1.44$  mho/m;  $\epsilon_r = 38.1$ ;  $\rho = 1000$  kg/m<sup>3</sup>

Phantom section: Right Section

DASY4 Configuration:

- Probe: ES3DV3 - SN3131
- ConvF(4.86, 4.86, 4.86); Calibrated: 2009-02-12
- Sensor-Surface: 4mm (Mechanical Surface Detection (Locations From Previous Scan Used))Sensor-Surface: 4mm (Mechanical Surface Detection)
- Electronics: DAE4 Sn555; Calibrated: 2008-11-07
- Phantom: SAM 4; Type: Twin SAM 040 CA; Serial: TP-1018
- Measurement SW: DASY4, V4.7 Build 55; Postprocessing SW: SEMCAD, V1.8 Build 184

**Cheek position - High – Phone Slide Closed – Camera Slide Closed /Area Scan (51x91x1): Measurement grid:**

dx=15mm, dy=15mm

Maximum value of SAR (interpolated) = 0.213 mW/g

**Cheek position - High – Phone Slide Closed – Camera Slide Closed /Zoom Scan (5x5x7)/Cube 0: Measurement**

grid: dx=7.5mm, dy=7.5mm, dz=5mm

Reference Value = 4.01 V/m

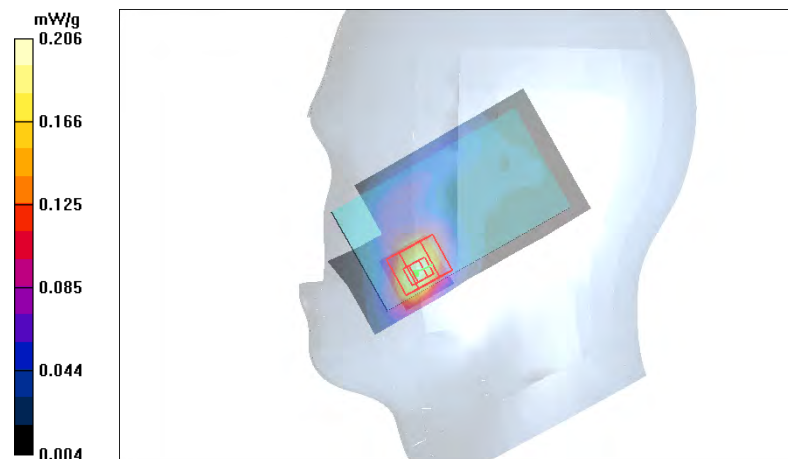
Peak SAR (extrapolated) = 0.342 W/kg

**SAR(1 g) = 0.188 mW/g**

**SAR(10 g) = 0.105 mW/g**

**Power Drift = 0.193 dB**

Maximum value of SAR (measured) = 0.206 mW/g



Date/Time: 2009-06-16 10:36:10

Test Laboratory: TCC Nokia

Type: RX-51; Serial: 004401/10/715043/1

Communication System: 3-slot GPRS1900

Frequency: 1909.8 MHz; Duty Cycle: 1:2.8

Medium: HSL1900; Medium Notes: 20.8 C

Medium parameters used:  $f = 1910$  MHz;  $\sigma = 1.44$  mho/m;  $\epsilon_r = 38.1$ ;  $\rho = 1000$  kg/m<sup>3</sup>

Phantom section: Right Section

DASY4 Configuration:

- Probe: ES3DV3 - SN3131

- ConvF(4.86, 4.86, 4.86); Calibrated: 2009-02-12

- Sensor-Surface: 4mm (Mechanical Surface Detection (Locations From Previous Scan Used))Sensor-Surface: 4mm (Mechanical Surface Detection)

- Electronics: DAE4 Sn555; Calibrated: 2008-11-07

- Phantom: SAM 4; Type: Twin SAM 040 CA; Serial: TP-1018

- Measurement SW: DASY4, V4.7 Build 55; Postprocessing SW: SEMCAD, V1.8 Build 184

Cheek position - High - Phone Slide Closed – Camera Slide Open/Area Scan (61x91x1): Measurement grid:

dx=15mm, dy=15mm

Maximum value of SAR (interpolated) = 0.782 mW/g

Cheek position - High - Phone Slide Closed – Camera Slide Open/Zoom Scan (5x5x7)/Cube 0: Measurement grid:

dx=7.5mm, dy=7.5mm, dz=5mm

Reference Value = 7.62 V/m

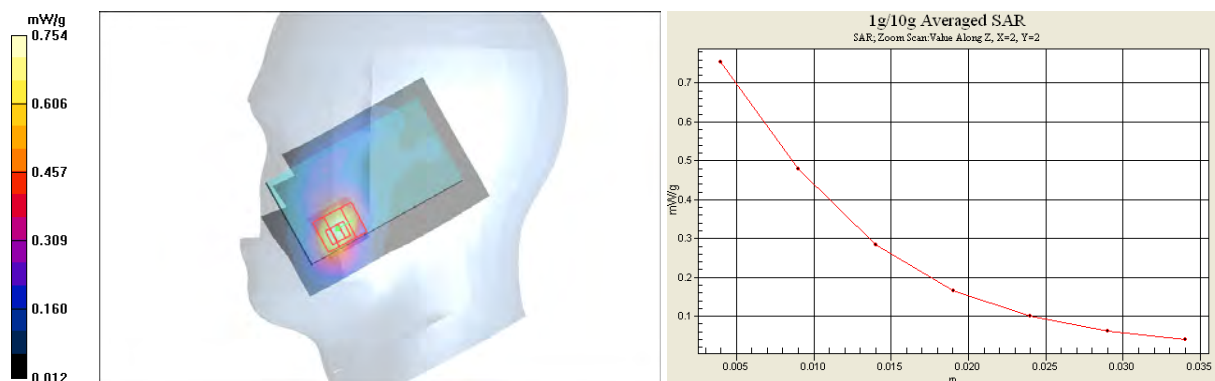
Peak SAR (extrapolated) = 1.27 W/kg

**SAR(1 g) = 0.703 mW/g**

**SAR(10 g) = 0.392 mW/g**

**Power Drift = 0.145 dB**

Maximum value of SAR (measured) = 0.754 mW/g



SAR Report

FCC\_RX-51\_01

Applicant: Nokia Corporation

Type: RX-51

Copyright © 2009 TCC Nokia

Date/Time: 2009-06-25 13:12:38

Test Laboratory: TCC Nokia

Type: RX-51; Serial: 004401/10/715043/1

**Communication System: WLAN2450**

Frequency: 2442 MHz; Duty Cycle: 1:1

Medium: HSL2450; Medium Notes: 21.9 C

Medium parameters used:  $f = 2442$  MHz;  $\sigma = 1.88$  mho/m;  $\epsilon_r = 38$ ;  $\rho = 1000$  kg/m<sup>3</sup>

Phantom section: Left Section

**DASY4 Configuration:**

- Probe: ES3DV3 - SN3165
- ConvF(4.49, 4.49, 4.49); Calibrated: 2009-05-25
- Sensor-Surface: 4mm (Mechanical Surface Detection (Locations From Previous Scan Used))Sensor-Surface: 4mm (Mechanical Surface Detection)
- Electronics: DAE4 Sn555; Calibrated: 2008-11-07
- Phantom: SAM 1; Type: Twin SAM 040 CA; Serial: TP-1449
- Measurement SW: DASY4, V4.7 Build 55; Postprocessing SW: SEMCAD, V1.8 Build 184

**Cheek position – Middle – Phone Slide Closed – Camera Slide Closed /Area Scan (51x91x1):** Measurement grid:  
dx=15mm, dy=15mm

Maximum value of SAR (interpolated) = 0.236 mW/g

**Cheek position – Middle – Phone Slide Closed – Camera Slide Closed /Zoom Scan (5x5x7)/Cube 0:** Measurement grid: dx=7.5mm, dy=7.5mm, dz=5mm

Reference Value = 6.18 V/m

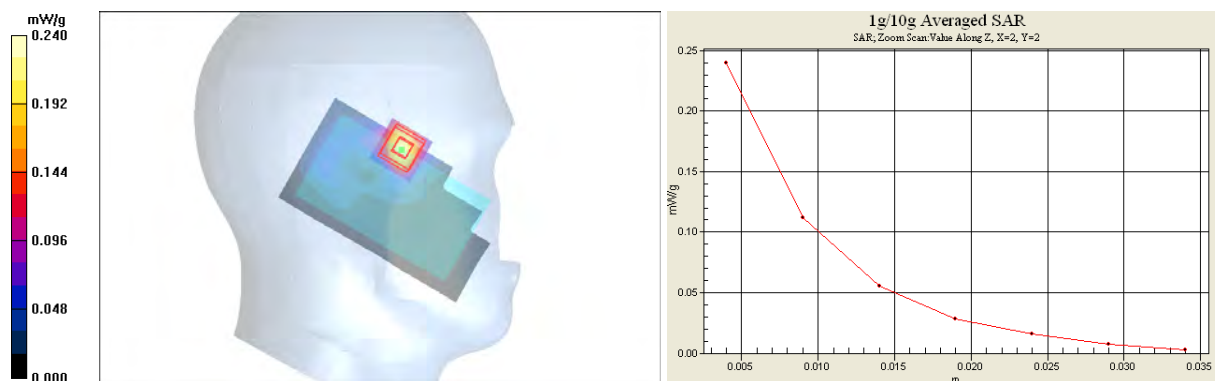
Peak SAR (extrapolated) = 0.459 W/kg

**SAR(1 g) = 0.213 mW/g**

**SAR(10 g) = 0.102 mW/g**

**Power Drift = -0.019 dB**

Maximum value of SAR (measured) = 0.240 mW/g



Date/Time: 2009-06-25 13:26:41

Test Laboratory: TCC Nokia

Type: RX-51; Serial: 004401/10/715043/1

**Communication System: WLAN2450**

Frequency: 2442 MHz; Duty Cycle: 1:1

Medium: HSL2450; Medium Notes: 21.9 C

Medium parameters used:  $f = 2442$  MHz;  $\sigma = 1.88$  mho/m;  $\epsilon_r = 38$ ;  $\rho = 1000$  kg/m<sup>3</sup>

Phantom section: Left Section

DASY4 Configuration:

- Probe: ES3DV3 - SN3165
- ConvF(4.49, 4.49, 4.49); Calibrated: 2009-05-25
- Sensor-Surface: 4mm (Mechanical Surface Detection)
- Electronics: DAE4 Sn555; Calibrated: 2008-11-07
- Phantom: SAM 1; Type: Twin SAM 040 CA; Serial: TP-1449
- Measurement SW: DASY4, V4.7 Build 55; Postprocessing SW: SEMCAD, V1.8 Build 184

**Tilt position – Middle – Phone Slide Closed – Camera Slide Closed /Area Scan (61x91x1):** Measurement grid:

dx=15mm, dy=15mm

Maximum value of SAR (interpolated) = 0.124 mW/g

**Tilt position – Middle – Phone Slide Closed – Camera Slide Closed /Zoom Scan (5x5x7)/Cube 0:** Measurement

grid: dx=7.5mm, dy=7.5mm, dz=5mm

Reference Value = 7.53 V/m

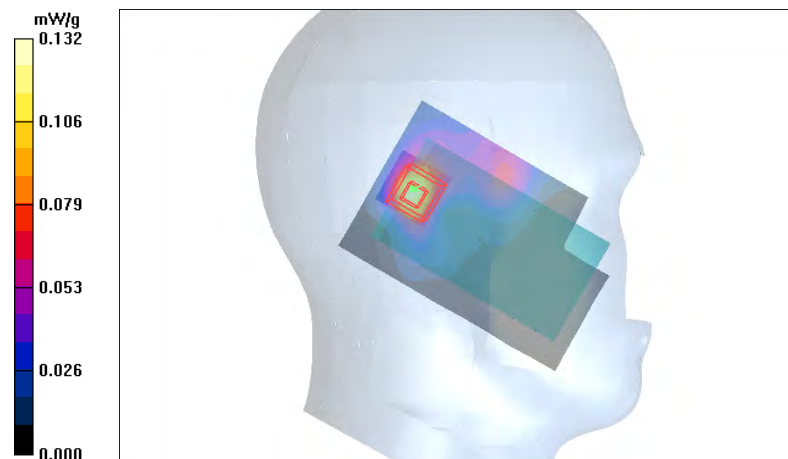
Peak SAR (extrapolated) = 0.227 W/kg

**SAR(1 g) = 0.119 mW/g**

**SAR(10 g) = 0.058 mW/g**

**Power Drift = -0.115 dB**

Maximum value of SAR (measured) = 0.132 mW/g





Date/Time: 2009-06-25 13:50:17

Test Laboratory: TCC Nokia

Type: RX-51; Serial: 004401/10/715043/1

**Communication System: WLAN2450**

Frequency: 2442 MHz; Duty Cycle: 1:1

Medium: HSL2450; Medium Notes: 21.9 C

Medium parameters used:  $f = 2442$  MHz;  $\sigma = 1.88$  mho/m;  $\epsilon_r = 38$ ;  $\rho = 1000$  kg/m<sup>3</sup>

Phantom section: Right Section

**DASY4 Configuration:**

- Probe: ES3DV3 - SN3165
- ConvF(4.49, 4.49, 4.49); Calibrated: 2009-05-25
- Sensor-Surface: 4mm (Mechanical Surface Detection)
- Electronics: DAE4 Sn555; Calibrated: 2008-11-07
- Phantom: SAM 1; Type: Twin SAM 040 CA; Serial: TP-1449
- Measurement SW: DASY4, V4.7 Build 55; Postprocessing SW: SEMCAD, V1.8 Build 184

**Cheek position – Middle – Phone Slide Closed – Camera Slide Closed /Area Scan (51x91x1):** Measurement grid:  
dx=15mm, dy=15mm

Maximum value of SAR (interpolated) = 0.155 mW/g

**Cheek position – Middle – Phone Slide Closed – Camera Slide Closed /Zoom Scan (5x5x7)/Cube 0:** Measurement grid: dx=7.5mm, dy=7.5mm, dz=5mm

Reference Value = 6.92 V/m

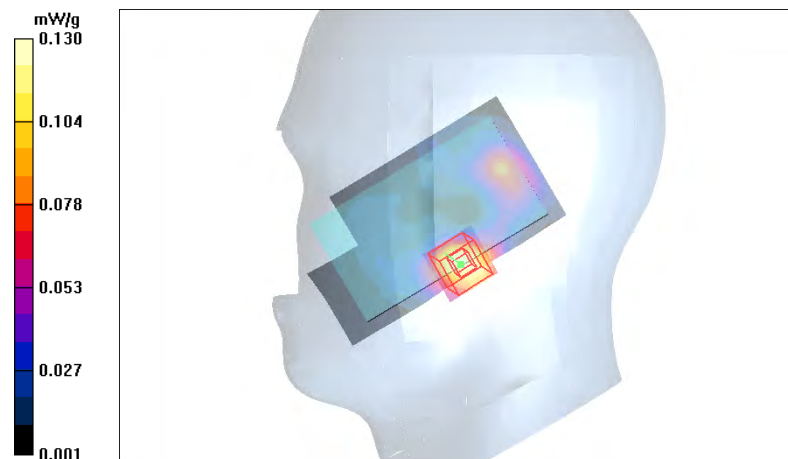
Peak SAR (extrapolated) = 0.229 W/kg

**SAR(1 g) = 0.119 mW/g**

**SAR(10 g) = 0.062 mW/g**

**Power Drift = 0.279 dB**

Maximum value of SAR (measured) = 0.130 mW/g





Date/Time: 2009-06-25 14:05:25

Test Laboratory: TCC Nokia

Type: RX-51; Serial: 004401/10/715043/1

**Communication System: WLAN2450**

Frequency: 2442 MHz; Duty Cycle: 1:1

Medium: HSL2450; Medium Notes: 21.9 C

Medium parameters used:  $f = 2442$  MHz;  $\sigma = 1.88$  mho/m;  $\epsilon_r = 38$ ;  $\rho = 1000$  kg/m<sup>3</sup>

Phantom section: Right Section

**DASY4 Configuration:**

- Probe: ES3DV3 - SN3165
- ConvF(4.49, 4.49, 4.49); Calibrated: 2009-05-25
- Sensor-Surface: 4mm (Mechanical Surface Detection)
- Electronics: DAE4 Sn555; Calibrated: 2008-11-07
- Phantom: SAM 1; Type: Twin SAM 040 CA; Serial: TP-1449
- Measurement SW: DASY4, V4.7 Build 55; Postprocessing SW: SEMCAD, V1.8 Build 184

**Tilt position – Middle – Phone Slide Closed – Camera Slide Closed /Area Scan (61x91x1):** Measurement grid:

dx=15mm, dy=15mm

Maximum value of SAR (interpolated) = 0.129 mW/g

**Tilt position – Middle – Phone Slide Closed – Camera Slide Closed /Zoom Scan (5x5x7)/Cube 0:** Measurement

grid: dx=7.5mm, dy=7.5mm, dz=5mm

Reference Value = 8.59 V/m

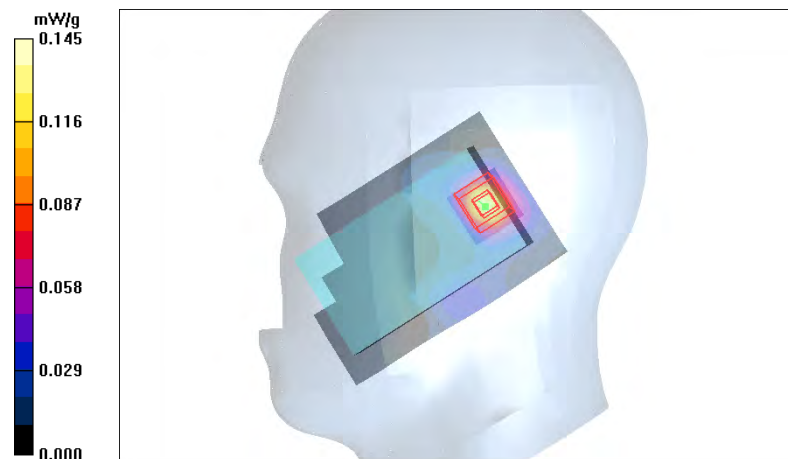
Peak SAR (extrapolated) = 0.245 W/kg

**SAR(1 g) = 0.126 mW/g**

**SAR(10 g) = 0.060 mW/g**

**Power Drift = 0.087 dB**

Maximum value of SAR (measured) = 0.145 mW/g



Date/Time: 2009-06-25 15:36:46

Test Laboratory: TCC Nokia

Type: RX-51; Serial: 004401/10/715043/1

**Communication System: WLAN2450**

Frequency: 2462 MHz; Duty Cycle: 1:1

Medium: HSL2450; Medium Notes: 21.9 C

Medium parameters used:  $f = 2462$  MHz;  $\sigma = 1.9$  mho/m;  $\epsilon_r = 37.9$ ;  $\rho = 1000$  kg/m<sup>3</sup>

Phantom section: Left Section

DASY4 Configuration:

- Probe: ES3DV3 - SN3165
- ConvF(4.49, 4.49, 4.49); Calibrated: 2009-05-25
- Sensor-Surface: 4mm (Mechanical Surface Detection (Locations From Previous Scan Used))Sensor-Surface: 4mm (Mechanical Surface Detection)
- Electronics: DAE4 Sn555; Calibrated: 2008-11-07
- Phantom: SAM 1; Type: Twin SAM 040 CA; Serial: TP-1449
- Measurement SW: DASY4, V4.7 Build 55; Postprocessing SW: SEMCAD, V1.8 Build 184

**Cheek position - High – Phone Slide Closed – Camera Slide Open/Area Scan (51x91x1): Measurement grid:**

dx=15mm, dy=15mm

Maximum value of SAR (interpolated) = 0.228 mW/g

**Cheek position - High – Phone Slide Closed – Camera Slide Open/Zoom Scan (5x5x7)/Cube 0: Measurement grid: dx=7.5mm, dy=7.5mm, dz=5mm**

Reference Value = 5.55 V/m

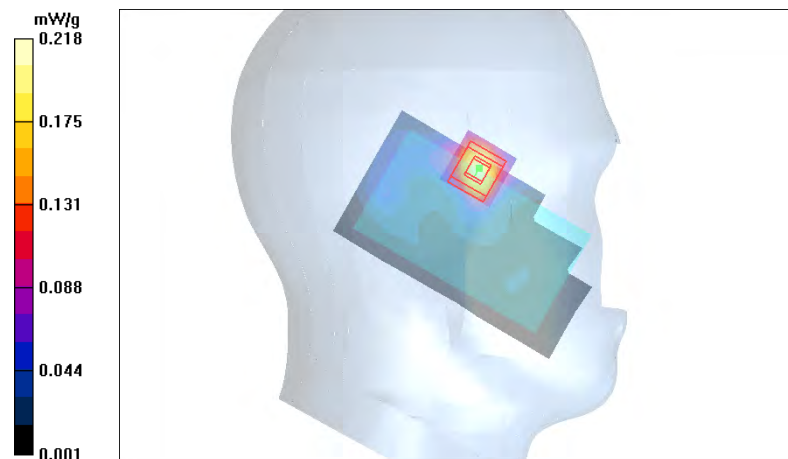
Peak SAR (extrapolated) = 0.416 W/kg

**SAR(1 g) = 0.194 mW/g**

**SAR(10 g) = 0.094 mW/g**

**Power Drift = 0.083 dB**

Maximum value of SAR (measured) = 0.218 mW/g



Date/Time: 2009-07-03 12:09:25

Test Laboratory: TCC Nokia

Type: RX-51; Serial: 004401/10/715043/1

Communication System: 2-slot GPRS850

Frequency: 848.8 MHz; Duty Cycle: 1:4.2

Medium: BSL850; Medium Notes: 20.0 C

Medium parameters used:  $f = 849$  MHz;  $\sigma = 1.01$  mho/m;  $\epsilon_r = 53.1$ ;  $\rho = 1000$  kg/m<sup>3</sup>

Phantom section: Flat Section

DASY4 Configuration:

- Probe: ET3DV6 - SN1395

- ConvF(5.74, 5.74, 5.74); Calibrated: 2008-07-17

- Sensor-Surface: 4mm (Mechanical Surface Detection (Locations From Previous Scan Used))Sensor-Surface: 4mm (Mechanical Surface Detection)

- Electronics: DAE4 Sn728; Calibrated: 2008-04-23

- Phantom: SAM 1; Type: Twin SAM 040 CA; Serial: TP-1179

- Measurement SW: DASY4, V4.7 Build 55; Postprocessing SW: SEMCAD, V1.8 Build 184

Body - High - Phone Slide Closed - Camera Slide Closed - no accessory - Back Facing Phantom/Area Scan

(61x91x1): Measurement grid: dx=15mm, dy=15mm

Maximum value of SAR (interpolated) = 0.684 mW/g

Body - High - Phone Slide Closed - Camera Slide Closed - no accessory - Back Facing Phantom/Zoom Scan

(5x5x7)/Cube 0: Measurement grid: dx=7.5mm, dy=7.5mm, dz=5mm

Reference Value = 14.7 V/m

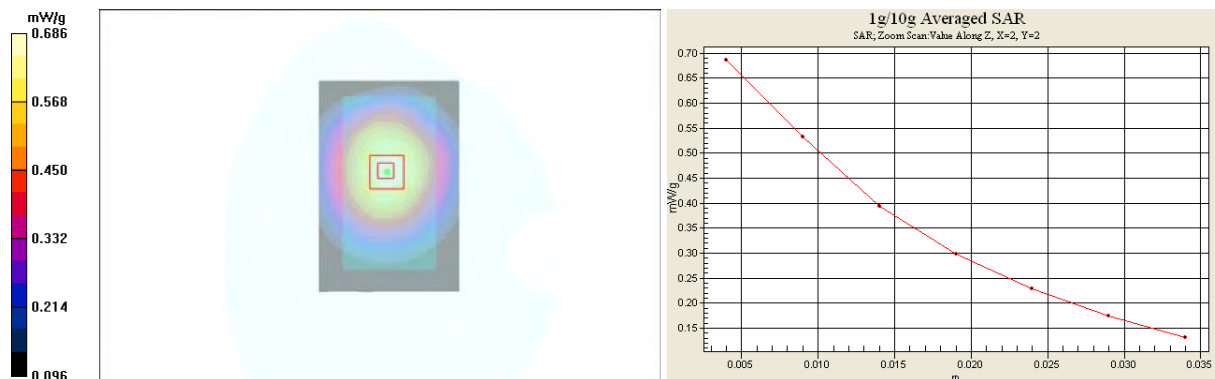
Peak SAR (extrapolated) = 0.815 W/kg

**SAR(1 g) = 0.650 mW/g**

**SAR(10 g) = 0.480 mW/g**

**Power Drift = -0.093 dB**

Maximum value of SAR (measured) = 0.686 mW/g



SAR Report

FCC\_RX-51\_01

Applicant: Nokia Corporation

Type: RX-51

Copyright © 2009 TCC Nokia

Date/Time: 2009-07-03 11:03:16

Test Laboratory: TCC Nokia

Type: RX-51; Serial: 004401/10/715043/1

**Communication System: 2-slot GPRS850**

Frequency: 836.6 MHz; Duty Cycle: 1:4.2

Medium: BSL850; Medium Notes: 20.0 C

Medium parameters used:  $f = 837$  MHz;  $\sigma = 0.998$  mho/m;  $\epsilon_r = 53.2$ ;  $\rho = 1000$  kg/m<sup>3</sup>

Phantom section: Flat Section

DASY4 Configuration:

- Probe: ET3DV6 - SN1395
- ConvF(5.74, 5.74, 5.74); Calibrated: 2008-07-17
- Sensor-Surface: 4mm (Mechanical Surface Detection (Locations From Previous Scan Used))Sensor-Surface: 4mm (Mechanical Surface Detection)
- Electronics: DAE4 Sn728; Calibrated: 2008-04-23
- Phantom: SAM 1; Type: Twin SAM 040 CA; Serial: TP-1179
- Measurement SW: DASY4, V4.7 Build 55; Postprocessing SW: SEMCAD, V1.8 Build 184

**Body - Middle - Phone Slide Closed - Camera Slide Closed - WH-205 - Back Facing Phantom/Area Scan**

**(61x91x1):** Measurement grid: dx=15mm, dy=15mm

Maximum value of SAR (interpolated) = 0.272 mW/g

**Body - Middle - Phone Slide Closed - Camera Slide Closed - WH-205 - Back Facing Phantom/Zoom Scan**

**(5x5x7)/Cube 0:** Measurement grid: dx=7.5mm, dy=7.5mm, dz=5mm

Reference Value = 8.77 V/m

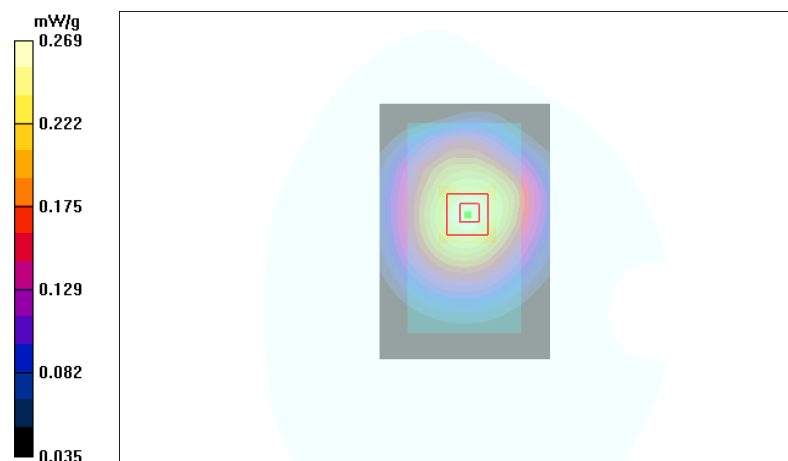
Peak SAR (extrapolated) = 0.322 W/kg

**SAR(1 g) = 0.253 mW/g**

**SAR(10 g) = 0.186 mW/g**

**Power Drift = -0.002 dB**

Maximum value of SAR (measured) = 0.269 mW/g



Date/Time: 2009-07-01 12:19:45

Test Laboratory: TCC Nokia

Type: RX-51; Serial: 004401/10/715043/1

Communication System: WCDMA1700/2100

Frequency: 1732.4 MHz; Duty Cycle: 1:1

Medium: BSL1800; Medium Notes: 20.9 C

Medium parameters used (interpolated):  $f = 1732.4$  MHz;  $\sigma = 1.43$  mho/m;  $\epsilon_r = 52.5$ ;  $\rho = 1000$  kg/m<sup>3</sup>

Phantom section: Flat Section

DASY4 Configuration:

- Probe: ES3DV3 - SN3165
- ConvF(4.89, 4.89, 4.89); Calibrated: 2009-05-25
- Sensor-Surface: 4mm (Mechanical Surface Detection)
- Electronics: DAE4 Sn555; Calibrated: 2008-11-07
- Phantom: SAM 2; Type: Twin SAM 040 CA; Serial: TP - 1177
- Measurement SW: DASY4, V4.7 Build 55; Postprocessing SW: SEMCAD, V1.8 Build 184

Body - Middle - Phone Slide Closed - Camera Slide Closed - No Accessory - BackFacing Phantom/Area Scan

(61x91x1): Measurement grid: dx=15mm, dy=15mm

Maximum value of SAR (interpolated) = 0.315 mW/g

Body - Middle - Phone Slide Closed - Camera Slide Closed - No Accessory - BackFacing Phantom/Zoom Scan

(5x5x7)/Cube 0: Measurement grid: dx=7.5mm, dy=7.5mm, dz=5mm

Reference Value = 6.15 V/m

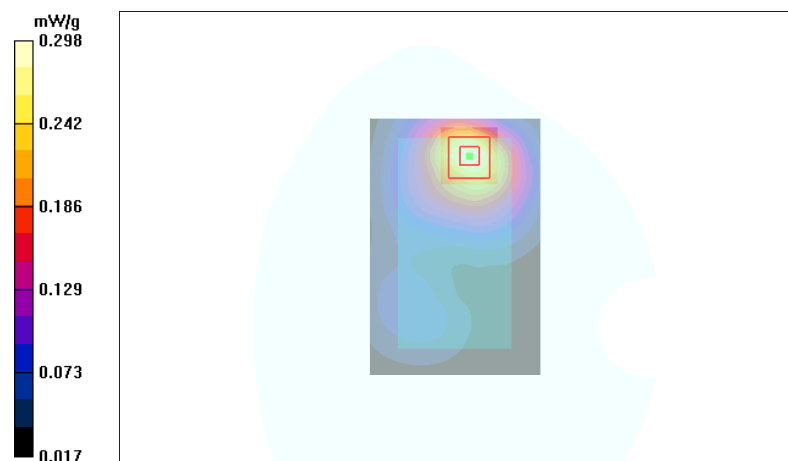
Peak SAR (extrapolated) = 0.406 W/kg

**SAR(1 g) = 0.275 mW/g**

**SAR(10 g) = 0.176 mW/g**

**Power Drift = -0.079 dB**

Maximum value of SAR (measured) = 0.298 mW/g



Date/Time: 2009-07-01 12:58:46

Test Laboratory: TCC Nokia

Type: RX-51; Serial: 004401/10/715043/1

Communication System: WCDMA1700/2100

Frequency: 1752.6 MHz; Duty Cycle: 1:1

Medium: BSL1800; Medium Notes: 20.9 C

Medium parameters used:  $f = 1753$  MHz;  $\sigma = 1.46$  mho/m;  $\epsilon_r = 52.5$ ;  $\rho = 1000$  kg/m<sup>3</sup>

Phantom section: Flat Section

DASY4 Configuration:

- Probe: ES3DV3 - SN3165

- ConvF(4.89, 4.89, 4.89); Calibrated: 2009-05-25

- Sensor-Surface: 4mm (Mechanical Surface Detection (Locations From Previous Scan Used))Sensor-Surface: 4mm (Mechanical Surface Detection)

- Electronics: DAE4 Sn555; Calibrated: 2008-11-07

- Phantom: SAM 2; Type: Twin SAM 040 CA; Serial: TP - 1177

- Measurement SW: DASY4, V4.7 Build 55; Postprocessing SW: SEMCAD, V1.8 Build 184

**Body - High - Phone Slide Closed - Camera Slide Closed - WH-205 - Back Facing Phantom/Area Scan (61x91x1):**

Measurement grid: dx=15mm, dy=15mm

Maximum value of SAR (interpolated) = 0.411 mW/g

**Body - High - Phone Slide Closed - Camera Slide Closed - WH-205 - Back Facing Phantom/Zoom Scan**

**(5x5x7)/Cube 0:** Measurement grid: dx=7.5mm, dy=7.5mm, dz=5mm

Reference Value = 5.80 V/m

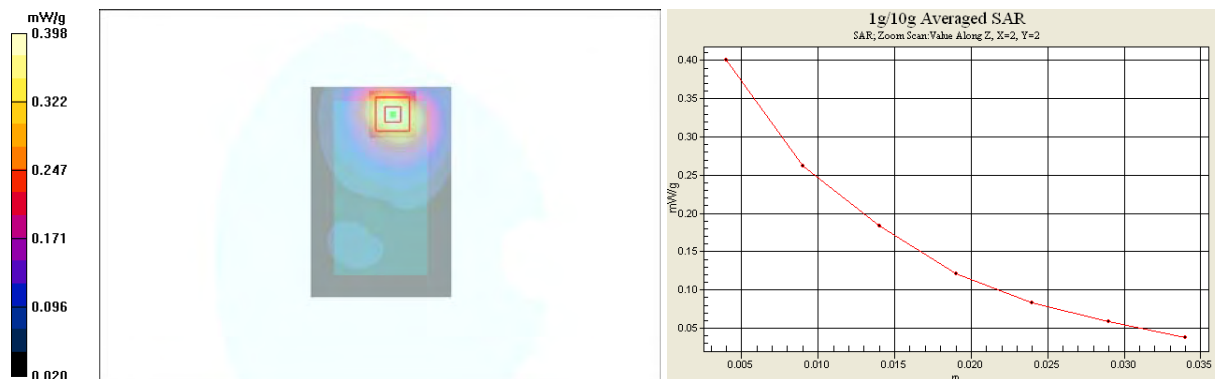
Peak SAR (extrapolated) = 0.575 W/kg

**SAR(1 g) = 0.369 mW/g**

**SAR(10 g) = 0.231 mW/g**

**Power Drift = -0.210 dB**

Maximum value of SAR (measured) = 0.398 mW/g



SAR Report

FCC\_RX-51\_01

Applicant: Nokia Corporation

Type: RX-51

Copyright © 2009 TCC Nokia

Date/Time: 2009-07-01 11:12:05

Test Laboratory: TCC Nokia

Type: RX-51; Serial: 004401/10/715043/1

Communication System: 3-slot GPRS1900

Frequency: 1850.2 MHz; Duty Cycle: 1:2.8

Medium: BSL1800; Medium Notes: 20.9 C

Medium parameters used (interpolated):  $f = 1850.2$  MHz;  $\sigma = 1.57$  mho/m;  $\epsilon_r = 52.2$ ;  $\rho = 1000$  kg/m<sup>3</sup>

Phantom section: Flat Section

DASY4 Configuration:

- Probe: ES3DV3 - SN3165

- ConvF(4.6, 4.6, 4.6); Calibrated: 2009-05-25

- Sensor-Surface: 4mm (Mechanical Surface Detection (Locations From Previous Scan Used))Sensor-Surface: 4mm (Mechanical Surface Detection)

- Electronics: DAE4 Sn555; Calibrated: 2008-11-07

- Phantom: SAM 2; Type: Twin SAM 040 CA; Serial: TP - 1177

- Measurement SW: DASY4, V4.7 Build 55; Postprocessing SW: SEMCAD, V1.8 Build 184

Body - Low - Phone Slide Closed - Camera Slide Closed - No Accessory - Back Facing Phantom/Area Scan

(61x91x1): Measurement grid: dx=15mm, dy=15mm

Maximum value of SAR (interpolated) = 0.595 mW/g

Body - Low - Phone Slide Closed - Camera Slide Closed - No Accessory - Back Facing Phantom/Zoom Scan

(5x5x7)/Cube 0: Measurement grid: dx=7.5mm, dy=7.5mm, dz=5mm

Reference Value = 6.49 V/m

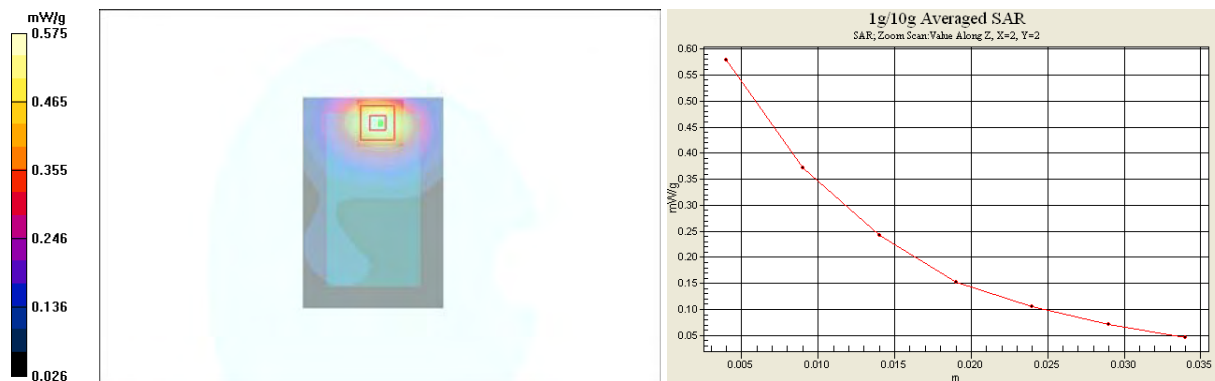
Peak SAR (extrapolated) = 0.842 W/kg

**SAR(1 g) = 0.534 mW/g**

**SAR(10 g) = 0.330 mW/g**

**Power Drift = 0.030 dB**

Maximum value of SAR (measured) = 0.575 mW/g



SAR Report

FCC\_RX-51\_01

Applicant: Nokia Corporation

Type: RX-51

Copyright © 2009 TCC Nokia

Date/Time: 2009-07-01 10:55:33

Test Laboratory: TCC Nokia

Type: RX-51; Serial: 004401/10/715043/1

**Communication System: 3-slot GPRS1900**

Frequency: 1880 MHz; Duty Cycle: 1:2.8

Medium: BSL1800; Medium Notes: 20.9 C

Medium parameters used:  $f = 1880$  MHz;  $\sigma = 1.6$  mho/m;  $\epsilon_r = 52$ ;  $\rho = 1000$  kg/m<sup>3</sup>

Phantom section: Flat Section

**DASY4 Configuration:**

- Probe: ES3DV3 - SN3165
- ConvF(4.6, 4.6, 4.6); Calibrated: 2009-05-25
- Sensor-Surface: 4mm (Mechanical Surface Detection (Locations From Previous Scan Used))Sensor-Surface: 4mm (Mechanical Surface Detection)
- Electronics: DAE4 Sn555; Calibrated: 2008-11-07
- Phantom: SAM 2; Type: Twin SAM 040 CA; Serial: TP - 1177
- Measurement SW: DASY4, V4.7 Build 55; Postprocessing SW: SEMCAD, V1.8 Build 184

**Body - Middle - Phone Slide Closed - Camera Slide Closed - WH-205 - Back Facing Phantom/Area Scan**

**(61x91x1):** Measurement grid: dx=15mm, dy=15mm

Maximum value of SAR (interpolated) = 0.573 mW/g

**Body - Middle - Phone Slide Closed - Camera Slide Closed - WH-205 - Back Facing Phantom/Zoom Scan**

**(5x5x7)/Cube 0:** Measurement grid: dx=7.5mm, dy=7.5mm, dz=5mm

Reference Value = 6.79 V/m

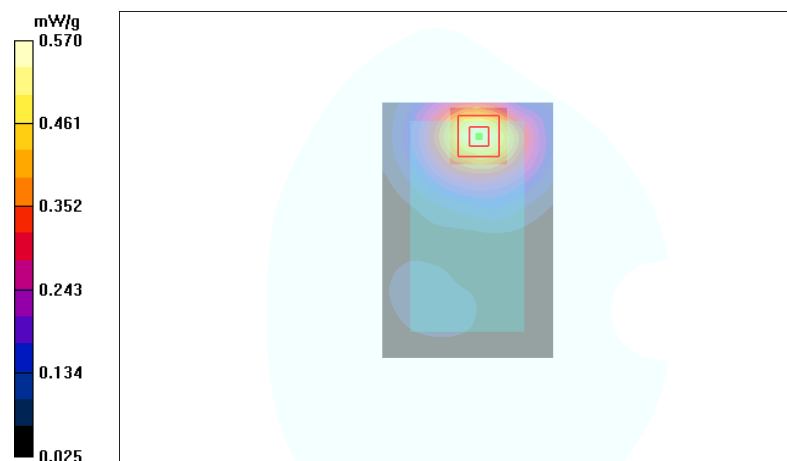
Peak SAR (extrapolated) = 0.799 W/kg

**SAR(1 g) = 0.522 mW/g**

**SAR(10 g) = 0.321 mW/g**

**Power Drift = 0.049 dB**

Maximum value of SAR (measured) = 0.570 mW/g





Date/Time: 2009-07-02 10:23:42

Test Laboratory: TCC Nokia

Type: RX-51; Serial: 004401/10/715043/1

**Communication System: WLAN2450**

Frequency: 2462 MHz; Duty Cycle: 1:1

Medium: BSL2450; Medium Notes: 20.3 C

Medium parameters used:  $f = 2462$  MHz;  $\sigma = 2.03$  mho/m;  $\epsilon_r = 50.6$ ;  $\rho = 1000$  kg/m<sup>3</sup>

Phantom section: Flat Section

**DASY4 Configuration:**

- Probe: ES3DV3 - SN3165
- ConvF(4.17, 4.17, 4.17); Calibrated: 2009-05-25
- Sensor-Surface: 4mm (Mechanical Surface Detection (Locations From Previous Scan Used))Sensor-Surface: 4mm (Mechanical Surface Detection)
- Electronics: DAE4 Sn555; Calibrated: 2008-11-07
- Phantom: SAM 2; Type: Twin SAM 040 CA; Serial: TP - 1177
- Measurement SW: DASY4, V4.7 Build 55; Postprocessing SW: SEMCAD, V1.8 Build 184

**Body - High - Phone Slide Closed - Camera Slide Closed - No accessory - Back Facing Phantom/Area Scan**

**(61x91x1):** Measurement grid: dx=15mm, dy=15mm

Maximum value of SAR (interpolated) = 0.094 mW/g

**Body - High - Phone Slide Closed - Camera Slide Closed - No accessory - Back Facing Phantom/Zoom Scan**

**(5x5x7)/Cube 0:** Measurement grid: dx=7.5mm, dy=7.5mm, dz=5mm

Reference Value = 4.11 V/m

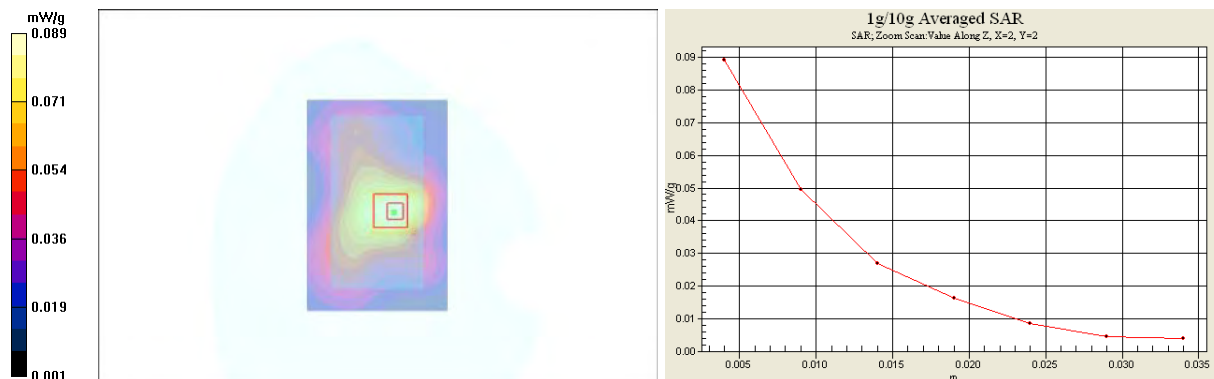
Peak SAR (extrapolated) = 0.144 W/kg

**SAR(1 g) = 0.083 mW/g**

**SAR(10 g) = 0.048 mW/g**

**Power Drift = 0.084 dB**

Maximum value of SAR (measured) = 0.089 mW/g



SAR Report

FCC\_RX-51\_01

Applicant: Nokia Corporation

Type: RX-51

Copyright © 2009 TCC Nokia

Date/Time: 2009-07-02 09:55:02

Test Laboratory: TCC Nokia

Type: RX-51; Serial: 004401/10/715043/1

**Communication System: WLAN2450**

Frequency: 2442 MHz; Duty Cycle: 1:1

Medium: BSL2450; Medium Notes: 20.3 C

Medium parameters used:  $f = 2442$  MHz;  $\sigma = 2.01$  mho/m;  $\epsilon_r = 50.6$ ;  $\rho = 1000$  kg/m<sup>3</sup>

Phantom section: Flat Section

**DASY4 Configuration:**

- Probe: ES3DV3 - SN3165
- ConvF(4.17, 4.17, 4.17); Calibrated: 2009-05-25
- Sensor-Surface: 4mm (Mechanical Surface Detection (Locations From Previous Scan Used))Sensor-Surface: 4mm (Mechanical Surface Detection)
- Electronics: DAE4 Sn555; Calibrated: 2008-11-07
- Phantom: SAM 2; Type: Twin SAM 040 CA; Serial: TP - 1177
- Measurement SW: DASY4, V4.7 Build 55; Postprocessing SW: SEMCAD, V1.8 Build 184

**Body - Middle - Phone Slide Closed - Camera Slide Closed - WH-205 - Back Facing Phantom/Area Scan**

**(61x91x1):** Measurement grid: dx=15mm, dy=15mm

Maximum value of SAR (interpolated) = 0.084 mW/g

**Body - Middle - Phone Slide Closed - Camera Slide Closed - WH-205 - Back Facing Phantom/Zoom Scan**

**(5x5x7)/Cube 0:** Measurement grid: dx=7.5mm, dy=7.5mm, dz=5mm

Reference Value = 4.29 V/m

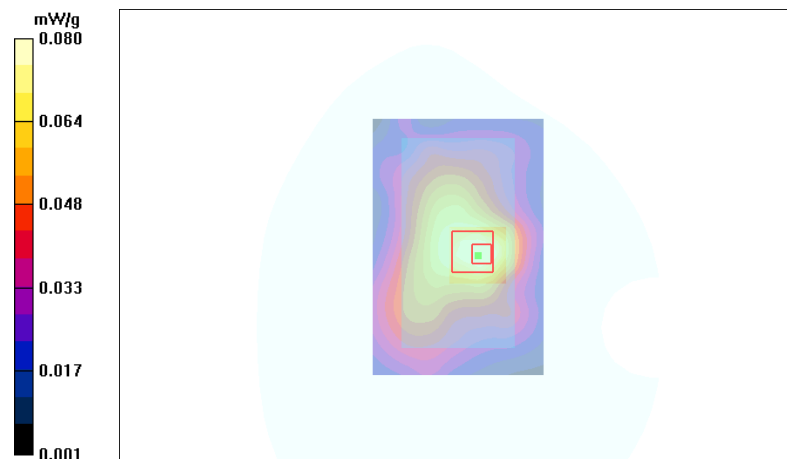
Peak SAR (extrapolated) = 0.141 W/kg

**SAR(1 g) = 0.075 mW/g**

**SAR(10 g) = 0.044 mW/g**

**Power Drift = 0.054 dB**

Maximum value of SAR (measured) = 0.080 mW/g



## APPENDIX C: CONDUCTED AVERAGE POWER MEASUREMENTS FOR WCDMA AND HSUPA

Test Laboratory: TCC Nokia

Type: RX-51; Serial: 004401/10/013559/5

### C.1. WCDMA1700/2100 Test results

Average power

Ch/ f [MHz]	P [dBm]
1313/1712.6	22.61
1450/1740.0	22.52
1512/1752.4	22.60

### C.2. HSUPA1700/2100 Test results

Average power

Ch / f [MHz]	P [dBm]				
	Subtest mode 1	Subtest mode 2	Subtest mode 3	Subtest mode 4	Subtest mode 5
1313/1712.6	19.33	18.11	20.35	19.36	19.46
1450/1740.0	19.03	18.34	20.31	18.36	19.28
1512/1752.4	19.05	19.02	19.96	19.20	19.26

Note: In HSUPA operation, the output power is reduced relative to the tuning target power for WCDMA. This device runs two separate HSUPA power control routines: MPR and E-TFC MPR. In each Subtest mode, the routine with the higher power reduction dominates. As a result, the overall MPR for each of the Subtest modes is as follows:

Maximum Power Reduction (MPR)				
Subtest mode 1	Subtest mode 2	Subtest mode 3	Subtest mode 4	Subtest mode 5
1.5dB	2.0dB	1.0dB	2.0dB	1.5dB

---

**APPENDIX D: RELEVANT PAGES FROM PROBE CALIBRATION REPORT(S)**

See the following pages



Accredited by the Swiss Accreditation Service (SAS)  
 The Swiss Accreditation Service is one of the signatories to the EA  
 Multilateral Agreement for the recognition of calibration certificates

Accreditation No.: **SCS 108**

Client **Nokia Salo TCC**

Certificate No: **ET3-1395\_Jul08**

## CALIBRATION CERTIFICATE

Object **ET3DV6 - SN:1395**

Calibration procedure(s) **QA CAL-01.v6 and QA CAL-23.v3**  
**Calibration procedure for dosimetric E-field probes**

Calibration date: **July 17, 2008**

Condition of the calibrated item **In Tolerance**

This calibration certificate documents the traceability to national standards, which realize the physical units of measurements (SI)  
 The measurements and the uncertainties with confidence probability are given on the following pages and are part of the certificate

All calibrations have been conducted in the closed laboratory facility: environment temperature ( $22 \pm 3$ )°C and humidity < 70%.

Calibration Equipment used (M&TE critical for calibration)

Primary Standards	ID #	Cal Date (Certificate No.)	Scheduled Calibration
Power meter E4419B	GB41293874	1-Apr-08 (No. 217-00788)	Apr-09
Power sensor E4412A	MY41495277	1-Apr-08 (No. 217-00788)	Apr-09
Power sensor E4412A	MY41498087	1-Apr-08 (No. 217-00788)	Apr-09
Reference 3 dB Attenuator	SN: S5054 (3c)	1-Jul-08 (No. 217-00865)	Jul-09
Reference 20 dB Attenuator	SN: S5086 (20b)	31-Mar-08 (No. 217-00787)	Apr-09
Reference 30 dB Attenuator	SN: S5129 (30b)	1-Jul-08 (No. 217-00866)	Jul-09
Reference Probe ES3DV2	SN: 3013	2-Jan-08 (No. ES3-3013_Jan08)	Jan-09
DAE4	SN: 660	3-Sep-07 (No. DAE4-660_Sep07)	Sep-08

Secondary Standards	ID #	Check Date (in house)	Scheduled Check
RF generator HP 8648C	US3642U01700	4-Aug-99 (in house check Oct-07)	In house check: Oct-09
Network Analyzer HP 8753E	US37390585	18-Oct-01 (in house check Oct-07)	In house check: Oct-08

Calibrated by: **Katja Pokovic** **Technical Manager**

Approved by: **Niels Kusler** **Quality Manager**

Signature

Issued: July 17, 2008

This calibration certificate shall not be reproduced except in full without written approval of the laboratory.

## DASY - Parameters of Probe: ET3DV6 SN:1395

### Sensitivity in Free Space<sup>A</sup>

### Diode Compression<sup>B</sup>

NormX	1.90 ± 10.1%	$\mu\text{V}/(\text{V}/\text{m})^2$	DCP X	93 mV
NormY	1.76 ± 10.1%	$\mu\text{V}/(\text{V}/\text{m})^2$	DCP Y	90 mV
NormZ	1.80 ± 10.1%	$\mu\text{V}/(\text{V}/\text{m})^2$	DCP Z	88 mV

### Sensitivity in Tissue Simulating Liquid (Conversion Factors)

Please see Page 8.

### Boundary Effect

**TSL**                      **900 MHz**      **Typical SAR gradient: 5 % per mm**

Sensor Center to Phantom Surface Distance		3.7 mm	4.7 mm
SAR <sub>be</sub> [%]	Without Correction Algorithm	11.7	6.8
SAR <sub>be</sub> [%]	With Correction Algorithm	0.8	0.5

**TSL**                      **1810 MHz**      **Typical SAR gradient: 10 % per mm**

Sensor Center to Phantom Surface Distance		3.7 mm	4.7 mm
SAR <sub>be</sub> [%]	Without Correction Algorithm	12.9	8.4
SAR <sub>be</sub> [%]	With Correction Algorithm	0.8	0.6

### Sensor Offset

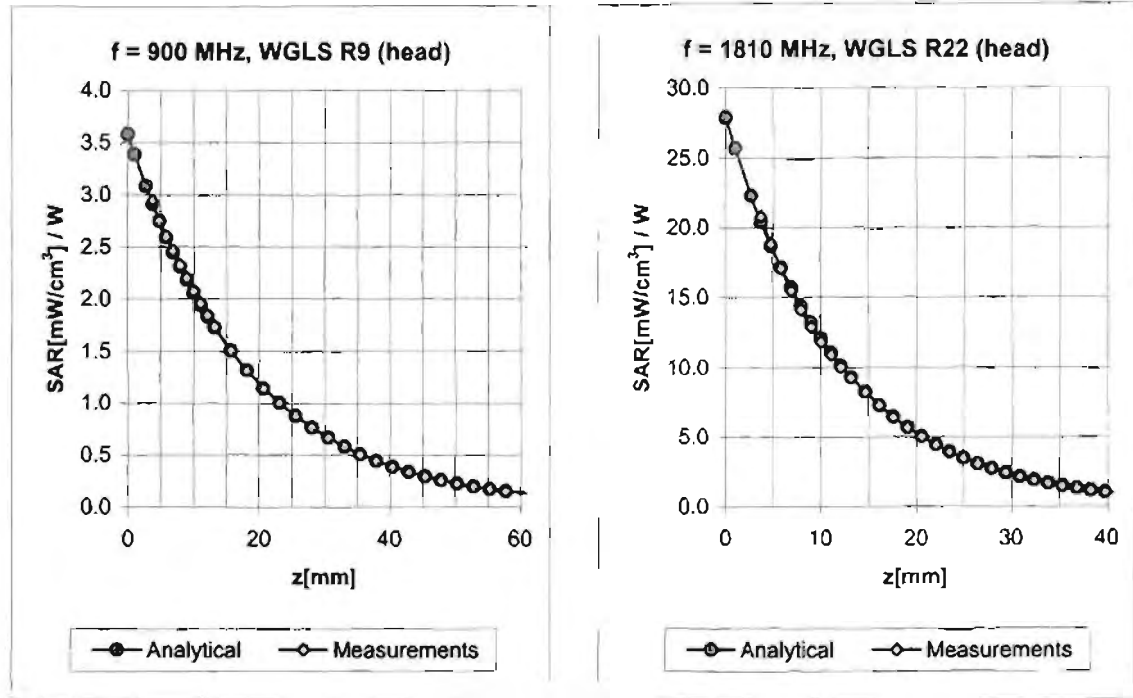
Probe Tip to Sensor Center                      **2.7 mm**

**The reported uncertainty of measurement is stated as the standard uncertainty of measurement multiplied by the coverage factor k=2, which for a normal distribution corresponds to a coverage probability of approximately 95%.**

<sup>A</sup> The uncertainties of NormX,Y,Z do not affect the E<sup>2</sup>-field uncertainty inside TSL (see Page 8).

<sup>B</sup> Numerical linearization parameter: uncertainty not required.

## Conversion Factor Assessment



f [MHz]	Validity [MHz] <sup>c</sup>	TSL	Permittivity	Conductivity	Alpha	Depth	ConvF Uncertainty
900	± 50 / ± 100	Head	41.5 ± 5%	0.97 ± 5%	0.40	2.60	5.85 ± 11.0% (k=2)
1810	± 50 / ± 100	Head	40.0 ± 5%	1.40 ± 5%	0.84	1.83	4.97 ± 11.0% (k=2)
1950	± 50 / ± 100	Head	40.0 ± 5%	1.40 ± 5%	0.93	1.67	4.75 ± 11.0% (k=2)
900	± 50 / ± 100	Body	55.0 ± 5%	1.05 ± 5%	0.42	2.60	5.74 ± 11.0% (k=2)
1810	± 50 / ± 100	Body	53.3 ± 5%	1.52 ± 5%	0.87	1.87	4.44 ± 11.0% (k=2)
1950	± 50 / ± 100	Body	53.3 ± 5%	1.52 ± 5%	0.98	1.66	4.40 ± 11.0% (k=2)

<sup>c</sup> The validity of ± 100 MHz only applies for DASY v4.4 and higher (see Page 2). The uncertainty is the RSS of the ConvF uncertainty at calibration frequency and the uncertainty for the indicated frequency band.



Accredited by the Swiss Accreditation Service (SAS)  
The Swiss Accreditation Service is one of the signatories to the EA  
Multilateral Agreement for the recognition of calibration certificates

Accreditation No.: **SCS 108**

Client **Nokia Salo TCC**

Certificate No: **ES3-3131\_Feb09**

## CALIBRATION CERTIFICATE

Object **ES3DV3 - SN:3131**

Calibration procedure(s) **QA CAL-01.v6 and QA CAL-23.v3  
Calibration procedure for dosimetric E-field probes**

Calibration date: **February 12, 2009**

Condition of the calibrated item **In Tolerance**

This calibration certificate documents the traceability to national standards, which realize the physical units of measurements (SI).  
The measurements and the uncertainties with confidence probability are given on the following pages and are part of the certificate.

All calibrations have been conducted in the closed laboratory facility: environment temperature  $(22 \pm 3)^\circ\text{C}$  and humidity  $< 70\%$

Calibration Equipment used (M&TE critical for calibration)

Primary Standards	ID #	Cal Date (Certificate No.)	Scheduled Calibration
Power meter E4419B	GB41293874	1-Apr-08 (No. 217-00788)	Apr-09
Power sensor E4412A	MY41495277	1-Apr-08 (No. 217-00788)	Apr-09
Power sensor E4412A	MY41498087	1-Apr-08 (No. 217-00788)	Apr-09
Reference 3 dB Attenuator	SN: S5054 (3c)	1-Jul-08 (No. 217-00865)	Jul-09
Reference 20 dB Attenuator	SN: S5086 (20b)	31-Mar-08 (No. 217-00787)	Apr-09
Reference 30 dB Attenuator	SN: S5129 (30b)	1-Jul-08 (No. 217-00866)	Jul-09
Reference Probe ES3DV2	SN: 3013	2-Jan-09 (No. ES3-3013_Jan09)	Jan-10
DAE4	SN: 660	9-Sep-08 (No. DAE4-660_Sep08)	Sep-09
Secondary Standards	ID #	Check Date (in house)	Scheduled Check
RF generator HP 8648C	US3642U01700	4-Aug-99 (in house check Oct-07)	In house check: Oct-09
Network Analyzer HP 8753E	US37390585	18-Oct-01 (in house check Oct-08)	In house check: Oct-09

Calibrated by: **Katja Pokovic** **Technical Manager**

Approved by: **Niels Kuster** **Quality Manager**

Signature

Issued: February 12, 2009

This calibration certificate shall not be reproduced except in full without written approval of the laboratory.



## DASY - Parameters of Probe: ES3DV3 SN:3131

### Sensitivity in Free Space<sup>A</sup>

### Diode Compression<sup>B</sup>

NormX	<b>1.36</b> ± 10.1%	$\mu\text{V}/(\text{V}/\text{m})^2$	DCP X	<b>94</b> mV
NormY	<b>1.30</b> ± 10.1%	$\mu\text{V}/(\text{V}/\text{m})^2$	DCP Y	<b>95</b> mV
NormZ	<b>1.29</b> ± 10.1%	$\mu\text{V}/(\text{V}/\text{m})^2$	DCP Z	<b>93</b> mV

### Sensitivity in Tissue Simulating Liquid (Conversion Factors)

Please see Page 8.

### Boundary Effect

**TSL**                      **900 MHz**      Typical SAR gradient: 5 % per mm

Sensor Center to Phantom Surface Distance		<b>3.0 mm</b>	<b>4.0 mm</b>
SAR <sub>be</sub> [%]	Without Correction Algorithm	9.2	5.4
SAR <sub>be</sub> [%]	With Correction Algorithm	0.8	0.5

**TSL**                      **1810 MHz**      Typical SAR gradient: 10 % per mm

Sensor Center to Phantom Surface Distance		<b>3.0 mm</b>	<b>4.0 mm</b>
SAR <sub>be</sub> [%]	Without Correction Algorithm	9.2	5.6
SAR <sub>be</sub> [%]	With Correction Algorithm	0.9	0.4

### Sensor Offset

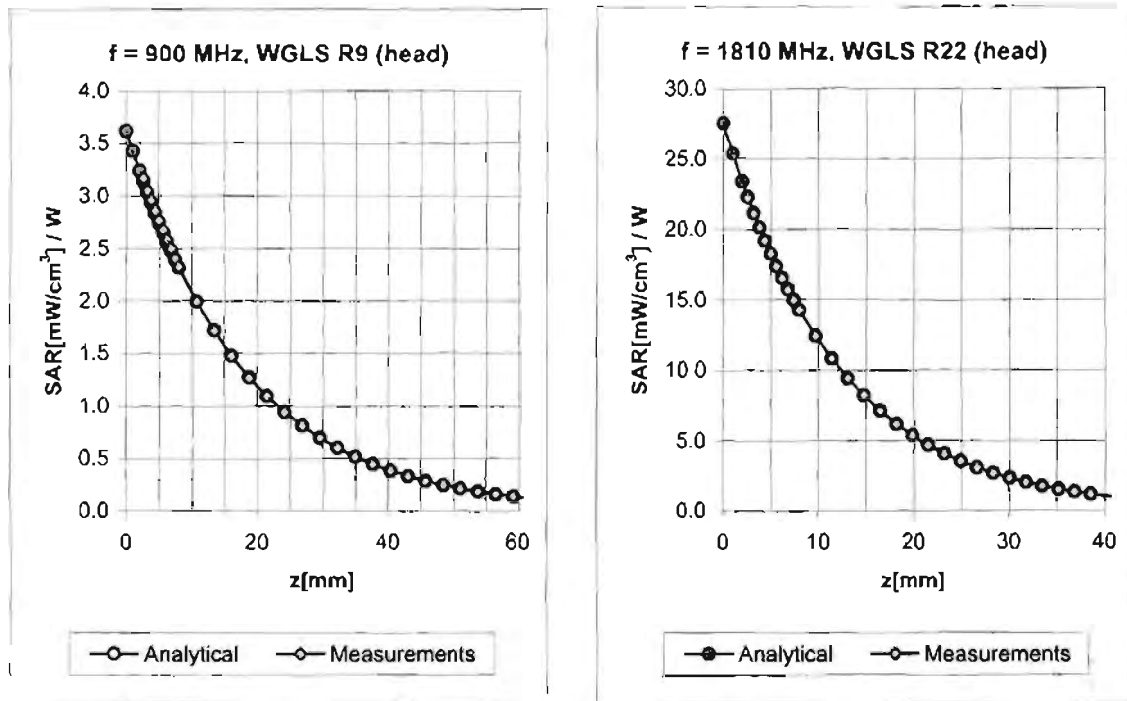
Probe Tip to Sensor Center                      **2.0 mm**

**The reported uncertainty of measurement is stated as the standard uncertainty of measurement multiplied by the coverage factor k=2, which for a normal distribution corresponds to a coverage probability of approximately 95%.**

<sup>A</sup> The uncertainties of NormX,Y,Z do not affect the E<sup>2</sup>-field uncertainty inside TSL (see Page 8).

<sup>B</sup> Numerical linearization parameter: uncertainty not required.

## Conversion Factor Assessment



f [MHz]	Validity [MHz] <sup>c</sup>	TSL	Permittivity	Conductivity	Alpha	Depth	ConvF	Uncertainty
900	± 50 / ± 100	Head	41.5 ± 5%	0.97 ± 5%	0.69	1.17	5.70	± 11.0% (k=2)
1810	± 50 / ± 100	Head	40.0 ± 5%	1.40 ± 5%	0.39	1.63	4.86	± 11.0% (k=2)
1950	± 50 / ± 100	Head	40.0 ± 5%	1.40 ± 5%	0.47	1.46	4.66	± 11.0% (k=2)
2450	± 50 / ± 100	Head	39.2 ± 5%	1.80 ± 5%	0.42	1.74	4.33	± 11.0% (k=2)
900	± 50 / ± 100	Body	55.0 ± 5%	1.05 ± 5%	0.69	1.26	5.64	± 11.0% (k=2)
1810	± 50 / ± 100	Body	53.3 ± 5%	1.52 ± 5%	0.49	1.37	4.65	± 11.0% (k=2)
1950	± 50 / ± 100	Body	53.3 ± 5%	1.52 ± 5%	0.45	1.46	4.61	± 11.0% (k=2)
2450	± 50 / ± 100	Body	52.7 ± 5%	1.95 ± 5%	0.99	1.08	3.98	± 11.0% (k=2)

<sup>c</sup> The validity of ± 100 MHz only applies for DASY v4.4 and higher (see Page 2). The uncertainty is the RSS of the ConvF uncertainty at calibration frequency and the uncertainty for the indicated frequency band.



Accredited by the Swiss Accreditation Service (SAS)  
The Swiss Accreditation Service is one of the signatories to the EA  
Multilateral Agreement for the recognition of calibration certificates

Accreditation No.: **SCS 108**

Client **Nokia Salo TCC**

Certificate No: **ES3-3165\_May09**

## CALIBRATION CERTIFICATE

Object **ES3DV3 - SN:3165**

Calibration procedure(s) **QA CAL-01.v6 and QA CAL-23.v3  
Calibration procedure for dosimetric E-field probes**

Calibration date: **May 25, 2009**

Condition of the calibrated item **In Tolerance**

This calibration certificate documents the traceability to national standards, which realize the physical units of measurements (SI).  
The measurements and the uncertainties with confidence probability are given on the following pages and are part of the certificate.

All calibrations have been conducted in the closed laboratory facility: environment temperature ( $22 \pm 3$ )°C and humidity < 70%.

Calibration Equipment used (M&TE critical for calibration)

Primary Standards	ID #	Cal Date (Certificate No.)	Scheduled Calibration
Power meter E4419B	GB41293874	1-Apr-09 (No. 217-01030)	Apr-10
Power sensor E4412A	MY41495277	1-Apr-09 (No. 217-01030)	Apr-10
Power sensor E4412A	MY41498087	1-Apr-09 (No. 217-01030)	Apr-10
Reference 3 dB Attenuator	SN: S5054 (3c)	31-Mar-09 (No. 217-01026)	Mar-10
Reference 20 dB Attenuator	SN: S5086 (20b)	31-Mar-09 (No. 217-01028)	Mar-10
Reference 30 dB Attenuator	SN: S5129 (30b)	31-Mar-09 (No. 217-01027)	Mar-10
Reference Probe ES3DV2	SN: 3013	2-Jan-09 (No. ES3-3013_Jan09)	Jan-10
DAE4	SN: 660	9-Sep-08 (No. DAE4-660_Sep08)	Sep-09

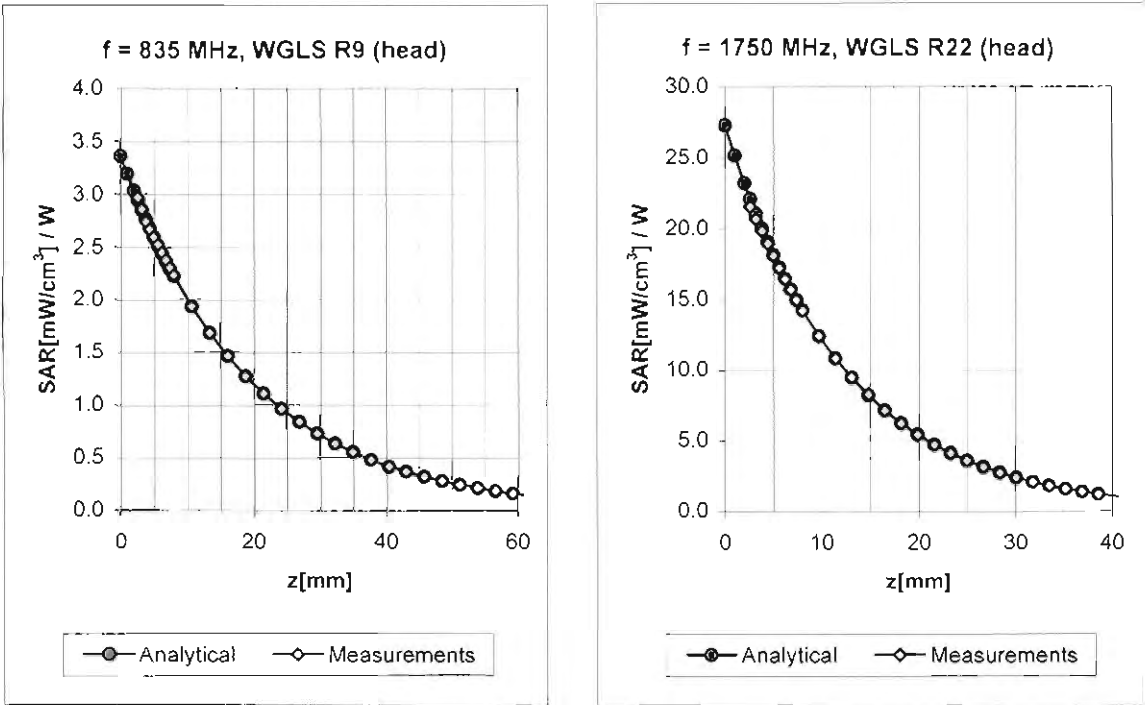
Secondary Standards	ID #	Check Date (in house)	Scheduled Check
RF generator HP 8648C	US3642U01700	4-Aug-99 (in house check Oct-07)	In house check: Oct-09
Network Analyzer HP 8753E	US37390585	18-Oct-01 (in house check Oct-08)	In house check: Oct-09

Name	Function	Signature
Calibrated by: <b>Jeton Kastrati</b>	<b>Laboratory Technician</b>	
Approved by: <b>Katja Pokovic</b>	<b>Technical Manager</b>	

Issued: May 25, 2009

This calibration certificate shall not be reproduced except in full without written approval of the laboratory.

Conversion Factor Assessment



f [MHz]	Validity [MHz] <sup>c</sup>	TSL	Permittivity	Conductivity	Alpha	Depth	ConvF	Uncertainty
835	± 50 / ± 100	Head	41.5 ± 5%	0.90 ± 5%	0.45	1.64	5.98	± 11.0% (k=2)
1750	± 50 / ± 100	Head	40.1 ± 5%	1.37 ± 5%	0.65	1.29	5.17	± 11.0% (k=2)
1900	± 50 / ± 100	Head	40.0 ± 5%	1.40 ± 5%	0.60	1.48	5.00	± 11.0% (k=2)
2450	± 50 / ± 100	Head	39.2 ± 5%	1.80 ± 5%	0.80	1.34	4.49	± 11.0% (k=2)
835	± 50 / ± 100	Body	55.2 ± 5%	0.97 ± 5%	0.40	1.64	5.95	± 11.0% (k=2)
1750	± 50 / ± 100	Body	53.4 ± 5%	1.49 ± 5%	0.54	1.59	4.89	± 11.0% (k=2)
1900	± 50 / ± 100	Body	53.3 ± 5%	1.52 ± 5%	0.39	2.01	4.60	± 11.0% (k=2)
2450	± 50 / ± 100	Body	52.7 ± 5%	1.95 ± 5%	0.70	1.30	4.17	± 11.0% (k=2)

<sup>c</sup> The validity of ± 100 MHz only applies for DASY v4.4 and higher (see Page 2). The uncertainty is the RSS of the ConvF uncertainty at calibration frequency and the uncertainty for the indicated frequency band.

---

**APPENDIX E: RELEVANT PAGES FROM DIPOLE VALIDATION KIT REPORT(S)**

.

See the following pages



Accredited by the Swiss Accreditation Service (SAS)  
The Swiss Accreditation Service is one of the signatories to the EA  
Multilateral Agreement for the recognition of calibration certificates

Accreditation No.: **SCS 108**

Client **Nokia Salo TCC**

Certificate No: **D835V2-462 Jan08**

## CALIBRATION CERTIFICATE

Object **D835V2 - SN: 462**

Calibration procedure(s) **QA CAL-05.v7  
Calibration procedure for dipole validation kits**

Calibration date: **January 21, 2008**

Condition of the calibrated item **In Tolerance**

This calibration certificate documents the traceability to national standards, which realize the physical units of measurements (SI).  
The measurements and the uncertainties with confidence probability are given on the following pages and are part of the certificate.

All calibrations have been conducted in the closed laboratory facility: environment temperature  $(22 \pm 3)^\circ\text{C}$  and humidity  $< 70\%$ .

Calibration Equipment used (M&TE critical for calibration)

Primary Standards	ID #	Cal Date (Calibrated by, Certificate No.)	Scheduled Calibration
Power meter EPM-442A	GB37480704	04-Oct-07 (METAS, No. 217-00736)	Oct-08
Power sensor HP 8481A	US37292783	04-Oct-07 (METAS, No. 217-00736)	Oct-08
Reference 20 dB Attenuator	SN: 5086 (20g)	07-Aug-07 (METAS, No 217-00718)	Aug-08
Reference 10 dB Attenuator	SN: 5047.2 (10r)	07-Aug-07 (METAS, No 217-00718)	Aug-08
Reference Probe ET3DV6 (HF)	SN 1507	26-Oct-07 (SPEAG, No. ET3-1507_Oct07)	Oct-08
DAE4	SN 601	03-Jan-08 (SPEAG, No. DAE4-601_Jan08)	Jan-09

Secondary Standards	ID #	Check Date (in house)	Scheduled Check
Power sensor HP 8481A	MY41092317	18-Oct-02 (SPEAG, in house check Oct-07)	In house check: Oct-09
RF generator R&S SMT-06	100005	04-Aug-99 (SPEAG, in house check Oct-07)	In house check: Oct-09
Network Analyzer HP 8753E	US37390585 S4206	18-Oct-01 (SPEAG, in house check Oct-07)	In house check: Oct-08

	Name	Function	Signature
Calibrated by:	Mike Meili	Laboratory Technician	

Approved by:	Katja Pokovic	Technical Manager	
--------------	---------------	-------------------	--

Issued: January 22, 2008

This calibration certificate shall not be reproduced except in full without written approval of the laboratory.

## DASY4 Validation Report for Head TSL

Date/Time: 17.01.2008 15:39:50

Test Laboratory: SPEAG, Zurich, Switzerland

**DUT: Dipole 835 MHz; Type: D835V2; Serial: D835V2 - SN:462**

Communication System: CW; Frequency: 835 MHz; Duty Cycle: 1:1

Medium: HSL 900 MHz;

Medium parameters used:  $f = 835$  MHz;  $\sigma = 0.92$  mho/m;  $\epsilon_r = 43$ ;  $\rho = 1000$  kg/m<sup>3</sup>

Phantom section: Flat Section

Measurement Standard: DASY4 (High Precision Assessment)

### DASY4 Configuration:

- Probe: ET3DV6 - SN1507 (HF); ConvF(6.01, 6.01, 6.01); Calibrated: 26.10.2007
- Sensor-Surface: 4mm (Mechanical Surface Detection)
- Electronics: DAE4 Sn601; Calibrated: 03.01.2008
- Phantom: Flat Phantom 4.9L; Type: QD000P49AA
- Measurement SW: DASY4, V4.7 Build 55; Postprocessing SW: SEMCAD, V1.8 Build 172

**Pin = 250 mW; d = 15 mm/Zoom Scan (7x7x7)/Cube 0:**

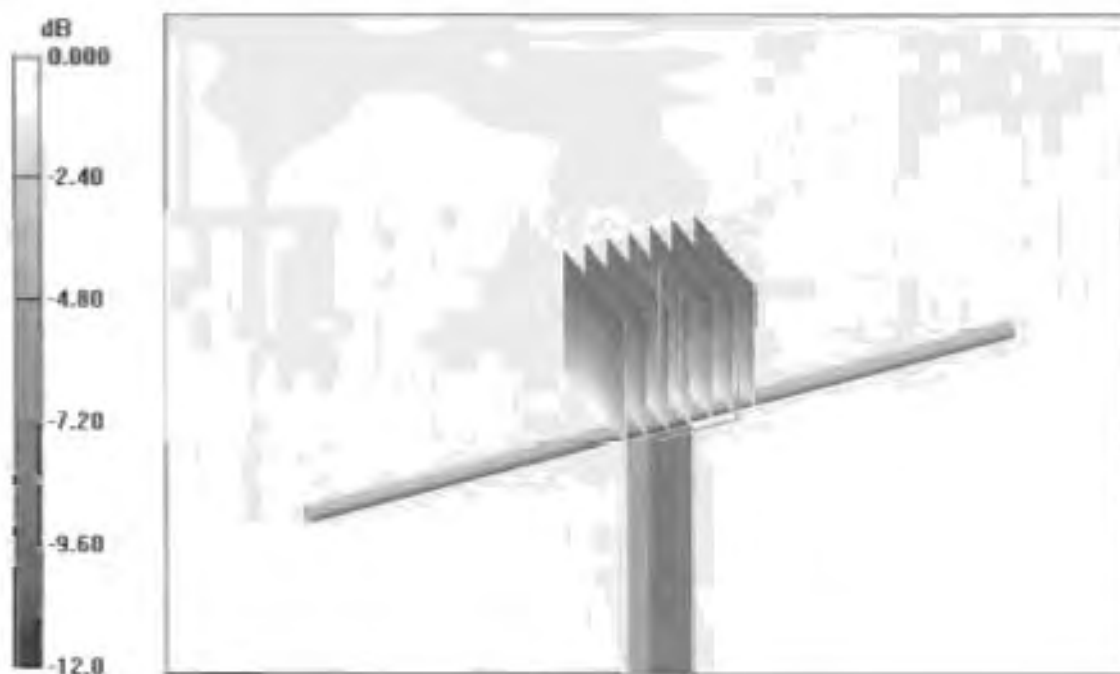
Measurement grid: dx=5mm, dy=5mm, dz=5mm

Reference Value = 55.2 V/m; Power Drift = 0.036 dB

Peak SAR (extrapolated) = 3.53 W/kg

**SAR(1 g) = 2.42 mW/g; SAR(10 g) = 1.58 mW/g**

Maximum value of SAR (measured) = 2.63 mW/g



0 dB = 2.63mW/g

Test Laboratory: SPEAG, Zurich, Switzerland

**DUT: Dipole 835 MHz; Type: D835V2; Serial: D835V2 - SN:462**

Communication System: CW; Frequency: 835 MHz; Duty Cycle: 1:1

Medium: MSL900;

Medium parameters used:  $f = 835$  MHz;  $\sigma = 0.99$  mho/m;  $\epsilon_r = 54.2$ ;  $\rho = 1000$  kg/m<sup>3</sup>

Phantom section: Flat Section

Measurement Standard: DASY4 (High Precision Assessment)

DASY4 Configuration:

- Probe: ET3DV6 - SN1507 (HF); ConvF(3.83, 5.83, 5.83); Calibrated: 26.10.2007
- Sensor-Surface: 4mm (Mechanical Surface Detection)
- Electronics: DAE4 Sn601; Calibrated: 03.01.2008
- Phantom: Flat Phantom 4.9L; Type: QD000P49AA
- Measurement SW: DASY4, V4.7 Build 55; Postprocessing SW: SEMCAD, V1.8 Build 172

**Pin = 250mW, d = 15mm/Zoom Scan (7x7x7)/Cube 0:**

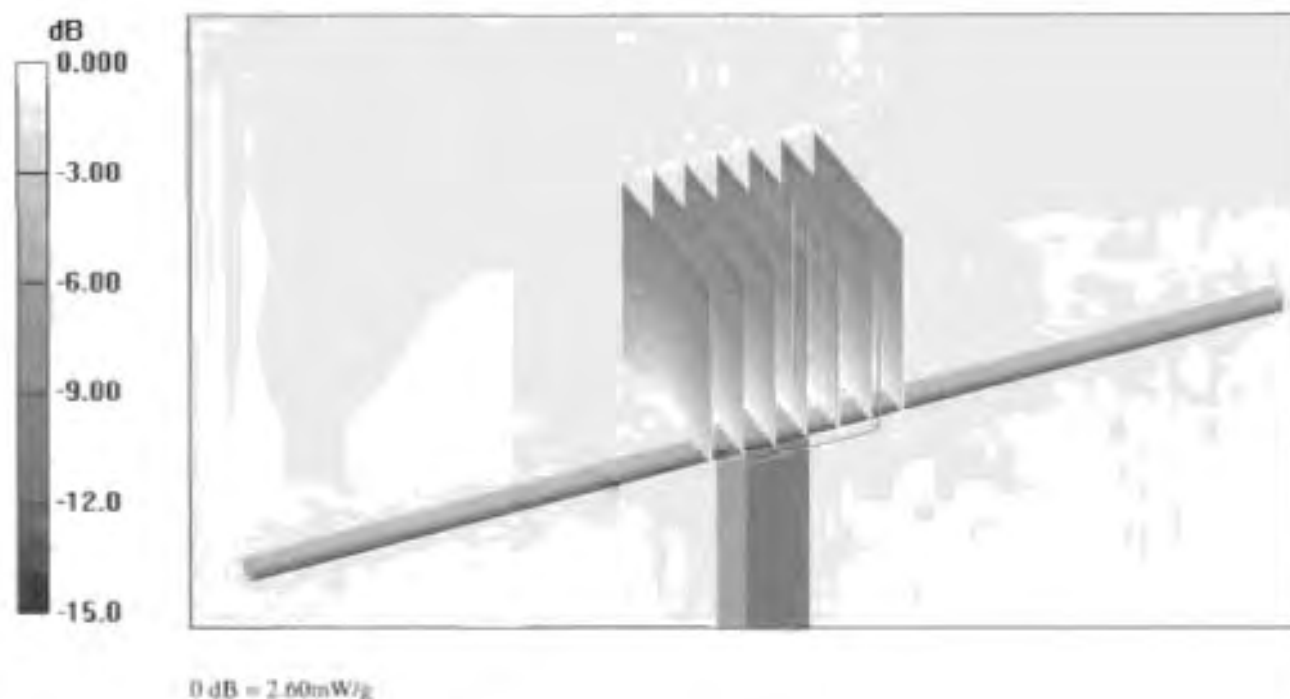
Measurement grid: dx=5mm, dy=5mm, dz=5mm

Reference Value = 53.4 V/m; Power Drift = -0.002 dB

Peak SAR (extrapolated) = 3.46 W/kg

**SAR(1 g) = 2.41 mW/g; SAR(10 g) = 1.58 mW/g**

Maximum value of SAR (measured) = 2.60 mW/g







Accredited by the Swiss Accreditation Service (SAS)  
The Swiss Accreditation Service is one of the signatories to the EA  
Multilateral Agreement for the recognition of calibration certificates

Accreditation No.: **SCS 108**

Client **Nokia Salo TCC**

Certificate No: **D1800V2-2d065\_Jan08**

## CALIBRATION CERTIFICATE

Object **D1800V2 - SN: 2d065**

Calibration procedure(s) **QA CAL-05.v7  
Calibration procedure for dipole validation kits**

Calibration date: **January 29, 2008**

Condition of the calibrated item **In Tolerance**

This calibration certificate documents the traceability to national standards, which realize the physical units of measurements (SI).  
The measurements and the uncertainties with confidence probability are given on the following pages and are part of the certificate.

All calibrations have been conducted in the closed laboratory facility: environment temperature  $(22 \pm 3)^\circ\text{C}$  and humidity  $< 70\%$ .

Calibration Equipment used (M&TE critical for calibration)

Primary Standards	ID #	Cal Date (Calibrated by, Certificate No.)	Scheduled Calibration
Power meter EPM-442A	GB37480704	04-Oct-07 (METAS, No. 217-00736)	Oct-08
Power sensor HP 8481A	US37292783	04-Oct-07 (METAS, No. 217-00736)	Oct-08
Reference 20 dB Attenuator	SN: 5086 (20g)	07-Aug-07 (METAS, No. 217-00718)	Aug-08
Reference 10 dB Attenuator	SN: 5047.2 (10r)	07-Aug-07 (METAS, No. 217-00718)	Aug-08
Reference Probe ET3DV6 (HF)	SN: 1507	26-Oct-07 (SPEAG, No. ET3-1507_Oct07)	Oct-08
DAE4	SN 601	3-Jan-08 (SPEAG, No. DAE4-601_Jan08)	Jan-09
Secondary Standards	ID #	Check Date (in house)	Scheduled Check
Power sensor HP 8481A	MY41092317	18-Oct-02 (SPEAG, in house check Oct-07)	In house check: Oct-08
RF generator R&S SMT-06	100005	4-Aug-99 (SPEAG, in house check Oct-07)	In house check: Oct-09
Network Analyzer HP 8753E	US37390585 S4206	18-Oct-01 (SPEAG, in house check Oct-07)	In house check: Oct-08

Calibrated by: **Name: Mike Meili, Function: Laboratory Technician, Signature: [Signature]**

Approved by: **Katja Pokovic, Technical Manager, [Signature]**

Issued: January 31, 2008

This calibration certificate shall not be reproduced except in full without written approval of the laboratory.

## DASY4 Validation Report for Head TSL

Date/Time: 29.01.2008 12:22:23

Test Laboratory: SPEAG, Zurich, Switzerland

**DUT: Dipole 1800 MHz; Type: D1800V2; Serial: SN:2d065**

Communication System: CW; Frequency: 1800 MHz; Duty Cycle: 1:1

Medium: HSL U10 BB;

Medium parameters used:  $f = 1800$  MHz;  $\sigma = 1.41$  mho/m;  $\epsilon_r = 38.5$ ;  $\rho = 1000$  kg/m<sup>3</sup>

Phantom section: Flat Section

Measurement Standard: DASY4 (High Precision Assessment)

DASY4 Configuration:

- Probe: ET3DV6 - SN1507 (HF); ConvF(4.99, 4.99, 4.99); Calibrated: 26.10.2007
- Sensor-Surface: 4mm (Mechanical Surface Detection)
- Electronics: DAE4 Sn601; Calibrated: 03.01.2008
- Phantom: Flat Phantom 5.0 (Front); Type: QD000P50AA
- Measurement SW: DASY4, V4.7 Build 55; Postprocessing SW: SEMCAD, V1.8 Build 172

**Pin = 250 mW; d = 10 mm/Zoom Scan (7x7x7)/Cube 0:**

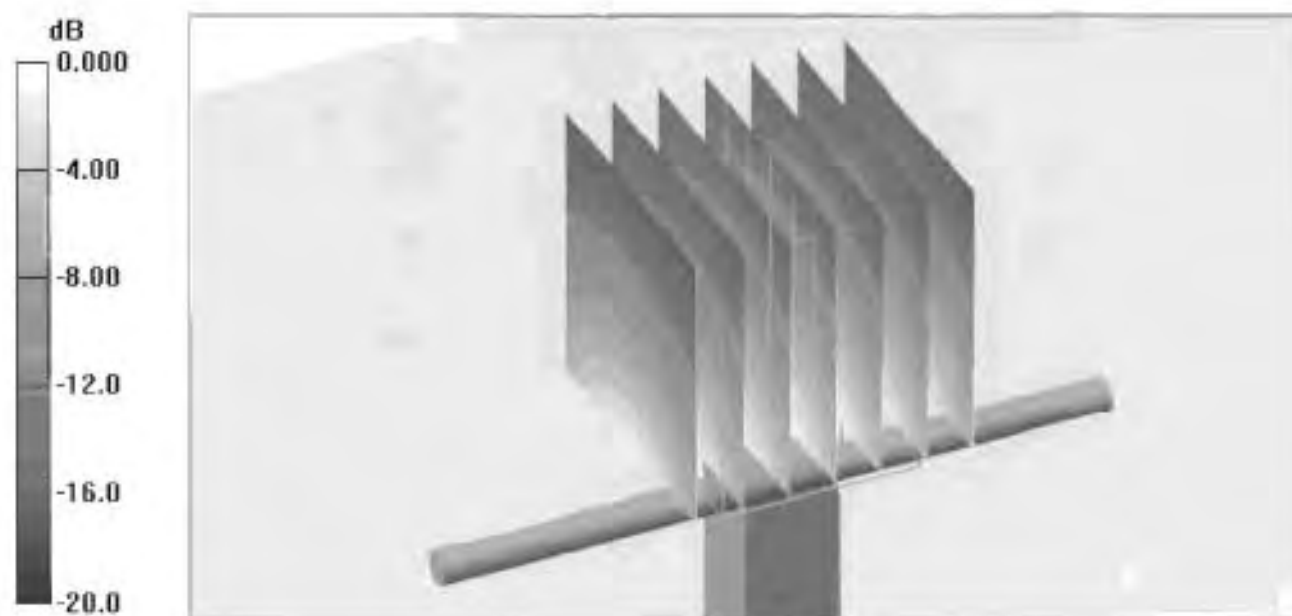
Measurement grid: dx=5mm, dy=5mm, dz=5mm

Reference Value = 93.4 V/m; Power Drift = 0.022 dB

Peak SAR (extrapolated) = 17.0 W/kg

**SAR(1 g) = 9.7 mW/g; SAR(10 g) = 5.11 mW/g**

Maximum value of SAR (measured) = 10.9 mW/g



0 dB = 10.9mW/g

## DASY4 Validation Report for Body TSL

Date/Time: 22.01.2008 13:32:44

Test Laboratory: SPEAG, Zurich, Switzerland

**DUT: Dipole 1800 MHz; Type: D1800V2; Serial: D1800V2 - SN:2d065**

Communication System: CW; Frequency: 1800 MHz; Duty Cycle: 1:1

Medium: MSL U10 BB;

Medium parameters used:  $f = 1800$  MHz;  $\sigma = 1.48$  mho/m;  $\epsilon_r = 53$ ;  $\rho = 1000$  kg/m<sup>3</sup>

Phantom section: Flat Section

Measurement Standard: DASY4 (High Precision Assessment)

### DASY4 Configuration:

- Probe: ET3DV6 - SN1507 (HF); ConvF(4.56, 4.56, 4.56); Calibrated: 26.10.2007
- Sensor-Surface: 4mm (Mechanical Surface Detection)
- Electronics: DAE4 Sn601; Calibrated: 03.01.2008
- Phantom: Flat Phantom 5.0 (back); Type: QD000P50AA
- Measurement SW: DASY4, V4.7 Build 55; Postprocessing SW: SEMCAD, V1.8 Build 172

**Pin = 250 mW; d = 10 mm/Zoom Scan (7x7x7)/Cube 0:**

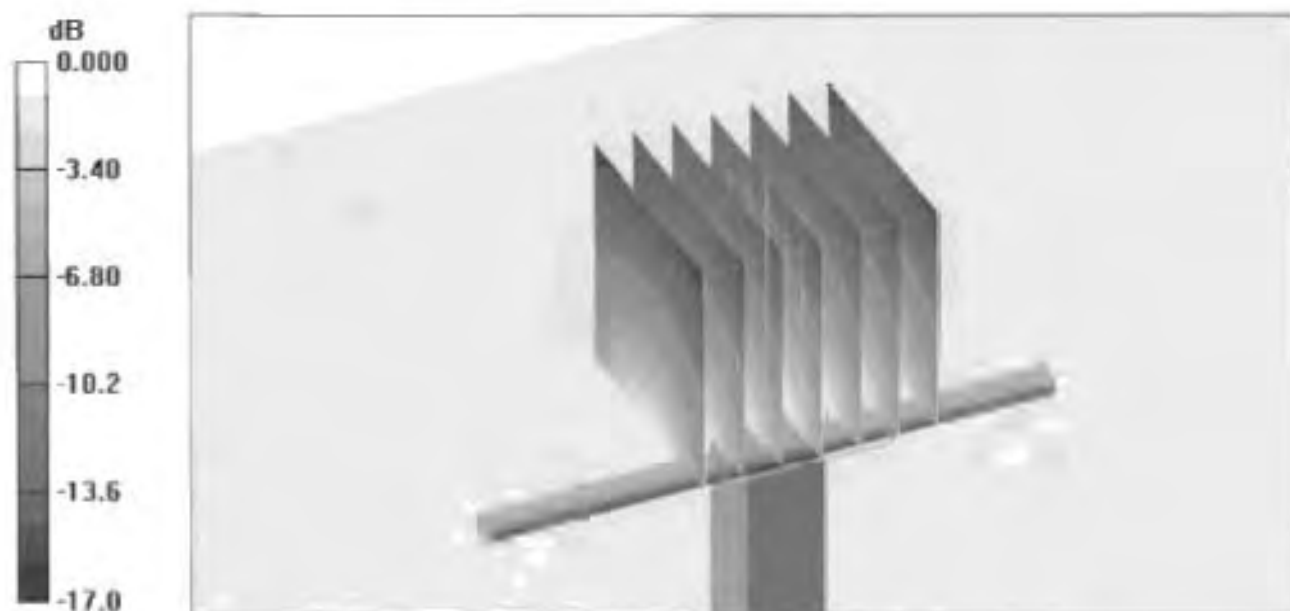
Measurement grid: dx=5mm, dy=5mm, dz=5mm

Reference Value = 92.0 V/m; Power Drift = -0.001 dB

Peak SAR (extrapolated) = 16.6 W/kg

**SAR(1 g) = 9.6 mW/g; SAR(10 g) = 5.16 mW/g**

Maximum value of SAR (measured) = 10.9 mW/g



0 dB = 10.9mW/g



Accredited by the Swiss Accreditation Service (SAS)  
The Swiss Accreditation Service is one of the signatories to the EA  
Multilateral Agreement for the recognition of calibration certificates

Accreditation No.: **SCS 108**

Client **Nokia Salo TCC**

Certificate No: **D1900V2-5d030 Jan08**

## CALIBRATION CERTIFICATE

Object **D1900V2 - SN: 5d030**

Calibration procedure(s) **QA CAL-05.v7  
Calibration procedure for dipole validation kits**

Calibration date: **January 29, 2008**

Condition of the calibrated item **In Tolerance**

This calibration certificate documents the traceability to national standards, which realize the physical units of measurements (SI).  
The measurements and the uncertainties with confidence probability are given on the following pages and are part of the certificate.

All calibrations have been conducted in the closed laboratory facility: environment temperature  $(22 \pm 3)^{\circ}\text{C}$  and humidity  $< 70\%$ .

Calibration Equipment used (M&TE critical for calibration)

Primary Standards	ID #	Cal Date (Calibrated by, Certificate No.)	Scheduled Calibration
Power meter EPM-442A	GB37480704	04-Oct-07 (METAS, No. 217-00736)	Oct-08
Power sensor HP 8481A	US37292783	04-Oct-07 (METAS, No. 217-00736)	Oct-08
Reference 20 dB Attenuator	SN: 5086 (20g)	07-Aug-07 (METAS, No 217-00718)	Aug-08
Reference 10 dB Attenuator	SN: 5047.2 (10r)	07-Aug-07 (METAS, No 217-00718)	Aug-08
Reference Probe ET3DV6 (HF)	SN: 1507	26-Oct-07 (SPEAG, No. ET3-1507_Oct07)	Oct-08
DAE4	SN 601	3-Jan-08 (SPEAG, No. DAE4-601_Jan08)	Jan-09
Secondary Standards	ID #	Check Date (in house)	Scheduled Check
Power sensor HP 8481A	MY41092317	18-Oct-02 (SPEAG, in house check Oct-07)	In house check: Oct-08
RF generator R&S SMT-06	100005	4-Aug-99 (SPEAG, in house check Oct-07)	In house check: Oct-09
Network Analyzer HP 8753E	US37390585 S4206	18-Oct-01 (SPEAG, in house check Oct-07)	In house check: Oct-08

Calibrated by: **Mike Meili** **Mike Meili** **Mike Meili**  
Name Function Signature  
**Mike Meili** **Laboratory Technician**

Approved by: **Katja Pokovic** **Katja Pokovic**  
Name Function  
**Katja Pokovic** **Technical Manager**

Issued: January 30, 2008

This calibration certificate shall not be reproduced except in full without written approval of the laboratory.

## DASY4 Validation Report for Head TSL

Date/Time: 29.01.2008 14:30:03

Test Laboratory: SPEAG, Zurich, Switzerland

**DUT: Dipole 1900 MHz; Type: D1900V2; Serial: D1900V2 - SN:5d030**

Communication System: CW; Frequency: 1900 MHz; Duty Cycle: 1:1

Medium: HSL U10 BB;

Medium parameters used:  $f = 1900$  MHz;  $\sigma = 1.46$  mho/m;  $\epsilon_r = 38.5$ ;  $\rho = 1000$  kg/m<sup>3</sup>

Phantom section: Flat Section

Measurement Standard: DASY4 (High Precision Assessment)

### DASY4 Configuration:

- Probe: ET3DV6 - SN1507 (HF); ConvF(4.86, 4.86, 4.86); Calibrated: 26.10.2007
- Sensor-Surface: 4mm (Mechanical Surface Detection)
- Electronics: DAE4 Sn601; Calibrated: 03.01.2008
- Phantom: Flat Phantom 5.0 (front); Type: QD000P50AA
- Measurement SW: DASY4, V4.7 Build 55; Postprocessing SW: SEMCAD, V1.8 Build 172

**Pin = 250 mW; d = 10 mm/Zoom Scan (7x7x7)/Cube 0:**

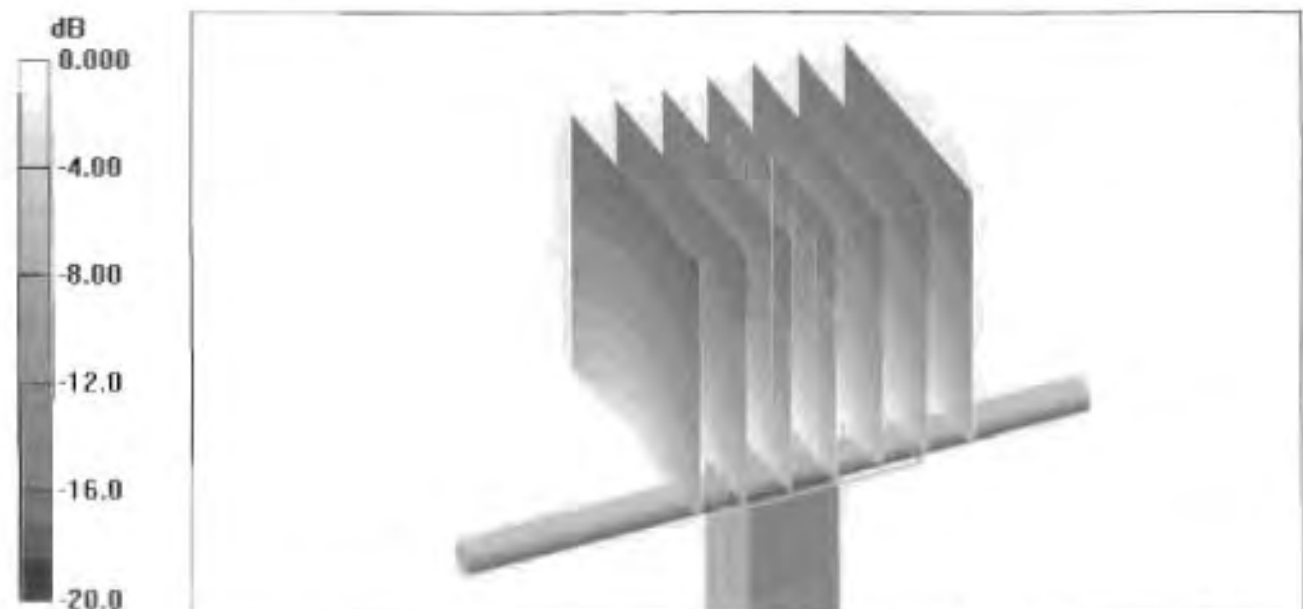
Measurement grid:  $dx=5$ mm,  $dy=5$ mm,  $dz=5$ mm

Reference Value = 93.8 V/m; Power Drift = 0.031 dB

Peak SAR (extrapolated) = 18.0 W/kg

**SAR(1 g) = 10.2 mW/g; SAR(10 g) = 5.3 mW/g**

Maximum value of SAR (measured) = 11.5 mW/g



Test Laboratory: SPEAG, Zurich, Switzerland

**DUT: Dipole 1900 MHz; Type: D1900V2; Serial: D1900V2 - SN:5d030**

Communication System: CW; Frequency: 1900 MHz; Duty Cycle: 1:1

Medium: MSL U10 BB;

Medium parameters used:  $f = 1900$  MHz;  $\sigma = 1.54$  mho/m;  $\epsilon_r = 53.1$ ;  $\rho = 1000$  kg/m<sup>3</sup>

Phantom section: Flat Section

Measurement Standard: DASY4 (High Precision Assessment)

DASY4 Configuration:

- Probe: ET3DV6 - SN1507 (HF); ConvF(4.48, 4.48, 4.48); Calibrated: 26.10.2007
- Sensor-Surface: 4mm (Mechanical Surface Detection)
- Electronics: DAE4 Sn601; Calibrated: 03.01.2008
- Phantom: Flat Phantom 5.0 (back); Type: QD000P50AA
- Measurement SW: DASY4, V4.7 Build 55; Postprocessing SW: SEMCAD, V1.8 Build 172

**Pin = 250 mW; d = 10 mm/Zoom Scan (7x7x7)/Cube 0:**

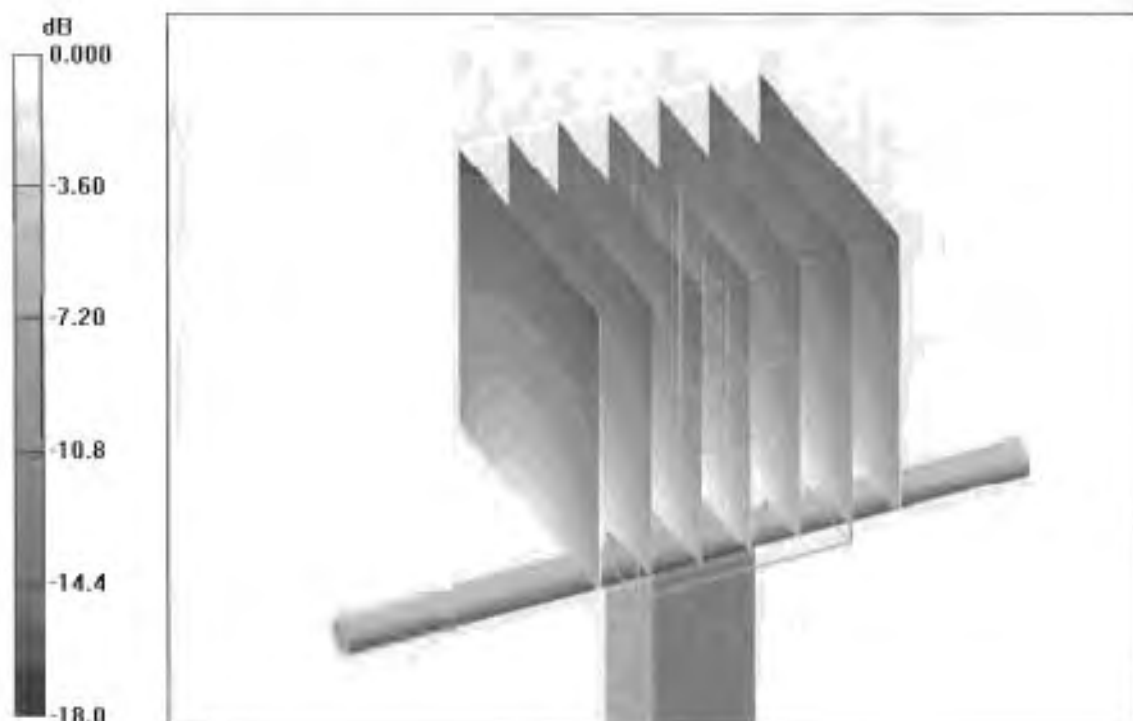
Measurement grid: dx=5mm, dy=5mm, dz=5mm

Reference Value = 90.4 V/m; Power Drift = -0.023 dB

Peak SAR (extrapolated) = 16.6 W/kg

**SAR(1 g) = 9.62 mW/g; SAR(10 g) = 5.1 mW/g**

Maximum value of SAR (measured) = 10.9 mW/g



0 dB = 10.9mW/g



Accredited by the Swiss Accreditation Service (SAS)  
 The Swiss Accreditation Service is one of the signatories to the EA  
 Multilateral Agreement for the recognition of calibration certificates

Accreditation No.: **SCS 108**

Client **Nokia Salo TCC**

Certificate No: **D2450V2-729\_Jan08**

## CALIBRATION CERTIFICATE

Object **D2450V2 - SN: 729**

Calibration procedure(s) **QA CAL-05.v7**  
**Calibration procedure for dipole validation kits**

Calibration date: **January 30, 2008**

Condition of the calibrated item **In Tolerance**

This calibration certificate documents the traceability to national standards, which realize the physical units of measurements (SI).  
 The measurements and the uncertainties with confidence probability are given on the following pages and are part of the certificate.

All calibrations have been conducted in the closed laboratory facility: environment temperature ( $22 \pm 3$ )°C and humidity < 70%.

Calibration Equipment used (M&TE critical for calibration)

Primary Standards	ID #	Cal Date (Calibrated by, Certificate No.)	Scheduled Calibration
Power meter EPM-442A	GB37480704	04-Oct-07 (METAS, No. 217-00736)	Oct-08
Power sensor HP 8481A	US37292783	04-Oct-07 (METAS, No. 217-00736)	Oct-08
Reference 20 dB Attenuator	SN: 5086 (20g)	07-Aug-07 (METAS, No 217-00718)	Aug-08
Reference 10 dB Attenuator	SN: 5047.2 (10r)	07-Aug-07 (METAS, No 217-00718)	Aug-08
Reference Probe ES3DV2	SN: 3025	26-Oct-07 (SPEAG, No. ES3-3025_Oct07)	Oct-08
DAE4	SN 601	03-Jan-08 (SPEAG, No. DAE4-601_Jan08)	Jan-09

Secondary Standards	ID #	Check Date (in house)	Scheduled Check
Power sensor HP 8481A	MY41092317	18-Oct-02 (SPEAG, in house check Oct-07)	In house check: Oct-08
RF generator R&S SMT-06	100005	4-Aug-99 (SPEAG, in house check Oct-07)	In house check: Oct-09
Network Analyzer HP 8753E	US37390585 S4206	18-Oct-01 (SPEAG, in house check Oct-07)	In house check: Oct-08

	Name	Function	Signature
Calibrated by:	Claudio Leubler	Laboratory Technician	

Approved by:	Katja Pokovic	Technical Manager
--------------	---------------	-------------------

Issued: January 31, 2008

This calibration certificate shall not be reproduced except in full without written approval of the laboratory.

## DASY4 Validation Report for Head TSL

Date/Time: 30.01.2008 12:36:45

Test Laboratory: SPEAG, Zurich, Switzerland

**DUT: Dipole 2450 MHz; Type: D2450V2; Serial: D2450V2 - SN729**

Communication System: CW-2450; Frequency: 2450 MHz; Duty Cycle: 1:1

Medium: HSL U10 BB;

Medium parameters used:  $f = 2450$  MHz;  $\sigma = 1.82$  mho/m;  $\epsilon_r = 37.8$ ;  $\rho = 1000$  kg/m<sup>3</sup>

Phantom section: Flat Section

Measurement Standard: DASY4 (High Precision Assessment)

### DASY4 Configuration:

- Probe: ES3DV2 - SN3025 (HF); ConvF(4.41, 4.41, 4.41); Calibrated: 26.10.2007
- Sensor-Surface: 4mm (Mechanical Surface Detection)
- Electronics: DAE4 Sn601; Calibrated: 03.01.2008
- Phantom: Flat Phantom 5.0 (front); Type: QD000P50AA; ;
- Measurement SW: DASY4, V4.7 Build 55; Postprocessing SW: SEMCAD, V1.8 Build 172

**Pin = 250 mW; d = 10 mm/Zoom Scan (7x7x7)/Cube 0:**

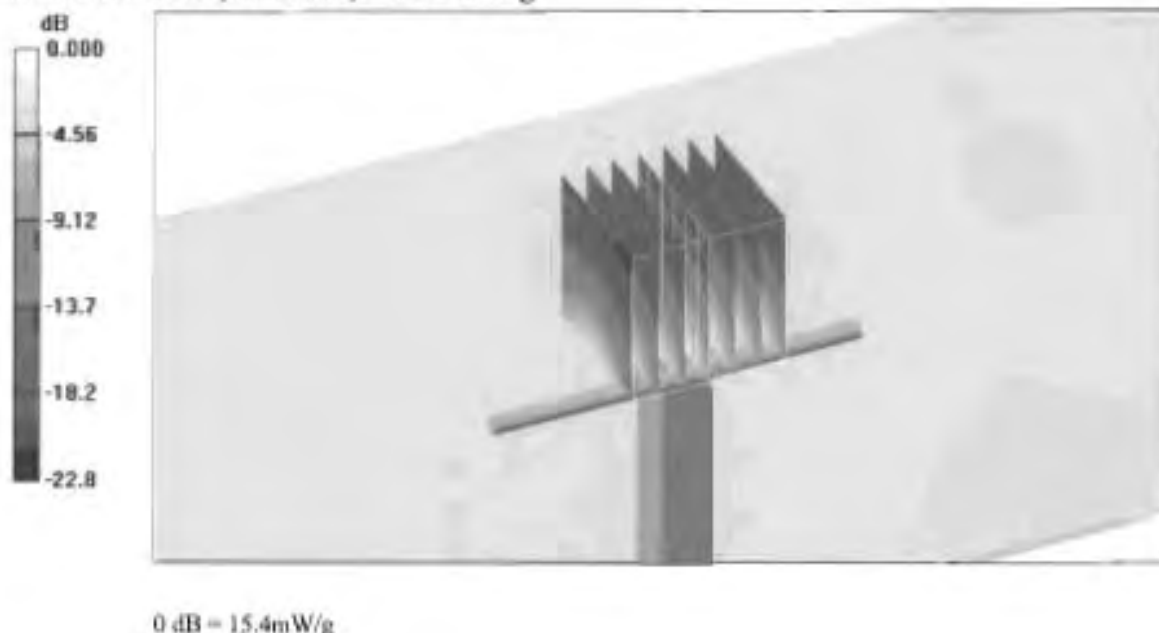
Measurement grid: dx=5mm, dy=5mm, dz=5mm

Reference Value = 92.1 V/m; Power Drift = 0.058 dB

Peak SAR (extrapolated) = 30.7 W/kg

**SAR(1 g) = 14.3 mW/g; SAR(10 g) = 6.57 mW/g**

Maximum value of SAR (measured) = 15.4 mW/g





## DASY4 Validation Report for Body TSL

Date/Time: 23.01.2008 12:53:20

Test Laboratory: SPEAG, Zurich, Switzerland

**DUT: Dipole 2450 MHz; Type: D2450V2; Serial: D2450V2 - SN729**

Communication System: CW-2450; Frequency: 2450 MHz; Duty Cycle: 1:1

Medium: MSL U10 BB;

Medium parameters used:  $f = 2450$  MHz;  $\sigma = 1.99$  mho/m;  $\epsilon_r = 52.5$ ;  $\rho = 1000$  kg/m<sup>3</sup>

Phantom section: Flat Section

Measurement Standard: DASY4 (High Precision Assessment)

### DASY4 Configuration:

- Probe: ES3DV2 - SN3025 (HF); ConvF(4.02, 4.02, 4.02); Calibrated: 26.10.2007
- Sensor-Surface: 4mm (Mechanical Surface Detection)
- Electronics: DAE4 Sn601; Calibrated: 03.01.2008
- Phantom: Flat Phantom 5.0 (front); Type: QD000P50AA; ;
- Measurement SW: DASY4, V4.7 Build 55; Postprocessing SW: SEMCAD, V1.8 Build 172

**Pin = 250 mW; d = 10 mm/Zoom Scan (7x7x7)/Cube 0:**

Measurement grid: dx=5mm, dy=5mm, dz=5mm

Reference Value = 82.8 V/m; Power Drift = 0.091 dB

Peak SAR (extrapolated) = 28.8 W/kg

**SAR(1 g) = 13.8 mW/g; SAR(10 g) = 6.33 mW/g**

Maximum value of SAR (measured) = 15.6 mW/g

