



NOKIA MOBILE PHONES LTD

P.O.Box 50

FIN-90571 Oulu

FINLAND

Tel. +358 10 5051

Fax. +358 10 505 7222

April 26, 2001

Federal Communications Commission,  
Authorization & Evaluation Division,  
7435 Oakland Mills Road  
Columbia, MD. 21046

Attention: Equipment Authorization Branch

We hereby certify that the transceiver FCC ID: LJONPC-1BG complies with  
ANSI/IEEE C95.1-1992 Standard for Safety Levels with Respect to Human  
Exposure to Radio Frequency Electromagnetic Fields, 3 kHz to 300 GHz.

Compliance was determined by testing appropriate parameters according to  
standard.

NOKIA MOBILE PHONES


A handwritten signature in black ink, appearing to read "Seppo Salow".

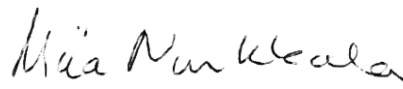
Seppo Salow  
Product Program Manager, PC Site Oulu

## SAR Compliance Test Report

Test report no.:	DTX02390-EN	Date of report:	20-Apr-2001
Number of pages:	21	Contact person:	Olli Kautio
		Responsible test engineer:	Pertti Mäkikyrö
Testing laboratory:	Nokia Mobile Phones Elektroniikkatie 10 P.O. Box 50 FIN-90571 OULU Finland Tel. +358-10-5051 Fax. +358-10-505 7222	Client:	Nokia Mobile Phones Elektroniikkatie 10 P.O. Box 50 FIN-90571 OULU Finland Tel. +358-10-5051 Fax. +358-10-505 7222
Tested devices:	LJONPC-1BG CBM-12		
Supplement reports:	-		
Testing has been carried out in accordance with:	ANSI/IEEE Std C95.1-1992 IEEE Standard for Safety Levels with Respect to Human Exposure to Radio Frequency Electromagnetic Fields, 3 kHz to 300 GHz  ANSI/IEEE Std C95.3-1992 IEEE Recommended Practice for the Measurement of Potentially Hazardous Electromagnetic Fields-RF and Microwave		
Documentation:	The documentation of the testing performed on the tested devices is archived for 15 years at PC Site Oulu		
Test results:	The tested device complies with the requirements in respect of all parameters subject to the test.  The test results and statements relate only to the items tested. The test report shall not be reproduced except in full, without written approval of the laboratory.		

Date and signatures: 20-Apr-2001  
For the contents:

  
Pertti Mäkikyrö  
Engineering Manager, EMC

  
Miia Nurkkala  
Test Engineer

## CONTENTS

1. SUMMARY FOR SAR TEST REPORT .....	3
1.1 MAXIMUM RESULTS FOUND DURING SAR EVALUATION.....	3
1.1.1 Head Configuration.....	3
1.1.2 Body Worn Configuration.....	3
1.1.3 Measurement Uncertainty .....	3
2. DESCRIPTION OF TESTED DEVICE .....	4
2.1 PICTURE OF PHONE .....	4
2.2 DESCRIPTION OF THE ANTENNA.....	4
2.3 BATTERY OPTIONS .....	4
2.4 BODY WORN ACCESSORIES .....	4
3. TEST CONDITIONS .....	5
3.1 ENVIRONMENT .....	5
3.2 TEST SIGNAL, FREQUENCIES, AND OUTPUT POWER .....	5
4. DESCRIPTION OF THE TEST EQUIPMENT.....	5
4.1 SYSTEM ACCURACY VERIFICATION.....	5
4.2 HEAD TISSUE SIMULANT .....	6
4.3 MUSCLE TISSUE SIMULANT.....	6
4.4 PHANTOMS.....	7
5. DESCRIPTION OF THE TEST PROCEDURE .....	8
5.1 TEST POSITIONS.....	8
5.1.1 Against Phantom Head .....	8
5.1.2 Body Worn Configuration.....	10
5.2 SCAN PROCEDURES.....	10
5.3 SAR AVERAGING METHODS .....	10
6. MEASUREMENT UNCERTAINTY .....	12
6.1 DESCRIPTION OF INDIVIDUAL MEASUREMENT UNCERTAINTY .....	12
6.1.1 Assessment Uncertainty.....	12
6.1.2 Source Uncertainty.....	12
6.1.3 Combined Uncertainty.....	12
7. RESULTS.....	13
7.1 HEAD CONFIGURATION .....	13
7.2 BODY WORN CONFIGURATION .....	13
APPENDIX A: Validation Test Printouts (2 pages)	
APPENDIX B: SAR Distribution Printouts (4 pages)	

## 1. SUMMARY FOR SAR TEST REPORT

Date of receipt	5-Apr-2001
Date of test	5-Apr-2001 – 9-Apr-2001
Contact person	Olli Kautio
Test plan referred to	-
Phone with SN, HW, SW and DUT numbers	LJONPC-1BG, SN: 235/13949315,
Accessories used in testing	BMC-3, CBM-12
Notes	
Document code	DTX02390-EN
Responsible test engineer	Pertti Mäkikyrö
Measurement performed by	Miia Nurkkala

### 1.1 Maximum Results Found during SAR Evaluation

The equipment is deemed to fulfil the requirements if the measured values are less than or equal to the limit.

#### 1.1.1 Head Configuration

Ch / f [MHz]	Position	Limit [mW/g]	Measured [mW/g]	Result
380/836.40	Cheek	1.6	1.12	<b>PASSED</b>

#### 1.1.2 Body Worn Configuration

Ch / f [MHz]	Body Worn Accessory	Limit [mW/g]	Measured [mW/g]	Result
991/824.04	CBM-12	1.6	0.80	<b>PASSED</b>

#### 1.1.3 Measurement Uncertainty

<b>Combined Uncertainty (Assessment &amp; Source)</b>	<b>± 12.2%</b>
<b>Extended Uncertainty (k=2) 95.5%</b>	<b>± 24%</b>

**2. DESCRIPTION OF TESTED DEVICE**

FCC ID	LJONPC-1BG
Modes of Operation	AMPS, IS136-800
Modulation Mode(s)	$\pi/4$ Quadrature Phase Shift Keying
Duty Cycle(s) (=1/ Crest Factor)	1/1 ,1/3
Transmitter Frequency Range	824.04 - 848.97MHz

**2.1 Picture of Phone****2.2 Description of the Antenna**

LJONPC-1BG has an internal integrated antenna.

**2.3 Battery Options**

There are several battery options available for tested device.

In body worn configuration they do not affect the separation distance between flat-phantom and tested device and thus should not affect the SAR values. The SAR was measured with BMC-3, which has the highest capacity.

**2.4 Body Worn Accessories**

Following body worn accessory is available for LJONPC-1BG:



Carrying Case CBM-12

### 3. TEST CONDITIONS

#### 3.1 Environment

Ambient temperature (°C).	22°C ± 1°C
Tissue simulating liquid temperature (°C).	22°C ± 0.5°C

#### 3.2 Test Signal, Frequencies, and Output Power

The phone was equipped with a special firmware, which allowed controlling the transmitter from its keypad.

In all operating bands the measurements were performed on lowest, middle and highest channels.

The phone was set to maximum power level during the all tests and at the beginning of the each test the battery was fully charged. Power output was measured by the FCC accredited test laboratory, M. Flom Associates, Inc. The same unit was used in SAR testing.

### 4. DESCRIPTION OF THE TEST EQUIPMENT

The measurements were performed with an automated near-field scanning system, DASY3, manufactured by Schmid & Partner Engineering AG (SPEAG) in Switzerland.

Test Equipment	Serial Number	Due Date
DASY3 DAE V1	371	10/01
E-field Probe ET3DV6	1379	02/02
Dipole Validation Kit, D835V2	405	02/03

Additional equipment needed in validation

Test Equipment	Model	Serial Number	Due Date
Signal Generator	R&S SME03	840489/025	09/01
Amplifier	Amplifier Research 5S1G4	27573	-
Power Meter	R&S NRT	835065/049	04/01
Power Sensor	R&S NRT-Z44	835374/021	05/01
Thermometer	DO9416	1505985462	-
Vector Network Analyzer	Anritsu 37347A	992604	02/02
Transmission Line Dielectric Probe	Damaskos T1500	-	-

#### 4.1 System Accuracy Verification

The probes are calibrated annually by the manufacturer. Dielectric parameters of the simulating liquids are measured using a Damaskos Inc. transmission line model T1500 and Anritsu 37347A vector network analyzer.

The SAR measurements were validated using the dipole validation kit. Power level of 250 mW was supplied to the dipole antenna placed under the flat section of the generic twin phantom. The validation results are in the table below and printouts of the validation tests are shown in Appendix A. All the measured parameters were within the specification.

$f$ [MHz]	Description	SAR [W/kg], 1g	Dielectric Parameters		Temp [°C]
			$\epsilon_r$	$\sigma$ [S/m]	
835	Measured	2.46	40.9	0.91	22
	Reference Result	2.47	42	0.88	N/A
835	Measured	2.66	55.3	0.95	22
	Reference Result	2.53	56.6	0.93	N/A

#### 4.2 Head Tissue Simulant

The composition of the brain tissue simulating liquid for 835MHz is

56.0%	Sugar
41.45%	De-Ionized Water
1.45%	Salt
1.0%	HEC
0.1%	Bactericide

$f$ [MHz]	Description	Dielectric Parameters		Temp [°C]
		$\epsilon_r$	$\sigma$ [S/m]	
835	Measured Value	40.9	0.91	22
	Recommended Value	41.5	0.90	22

Recommended values are adopted from IEEE 1528-Draft 6.1 "Recommended Practice for Determining the Spatial-Peak Specific Absorption Rate (SAR) in the Human Body Due to Wireless Communications Devices: Experimental Techniques".

#### 4.3 Muscle Tissue Simulant

The composition of the muscle tissue simulating liquid for 835MHz is

56.0%	De-Ionized Water
41.76%	Sugar
1.21%	HEC
0.76%	Salt
0.27%	Preservative

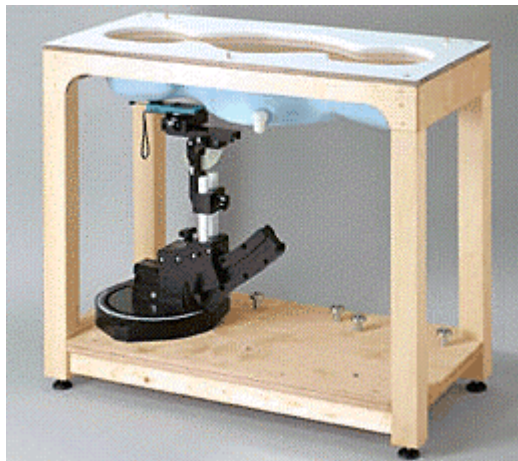
$f$ [MHz]	Description	Dielectric Parameters		Temp [°C]
		$\epsilon_r$	$\sigma$ [S/m]	
835	Measured Value	55.3	0.95	22
	Recommended Value	56.1	0.95	22

Recommended values are adopted from FCC Tissue Dielectric Properties web page at <http://www.fcc.gov/fcc-bin/dielec.sh>

#### 4.4 Phantoms

Two phantoms, "Generic Twin Phantom", manufactured by SPEAG, were used during the measurement. One phantom was filled with 835 MHz head tissue simulating liquid and the other with 835 MHz muscle tissue simulating liquid.

The thickness of phantom shell is 2 mm except for the ear, where a 4 mm ear spacer provides a 6 mm spacing from the tissue boundary.





## 5. DESCRIPTION OF THE TEST PROCEDURE

### 5.1 Test Positions

#### 5.1.1 Against Phantom Head

Measurements were made on both the "left hand" and "right hand" side of the phantom.

The phone was positioned against phantom according to IEEE 1528-Draft 6.1 "Recommended Practice for Determining the Spatial-Peak Specific Absorption Rate (SAR) in the Human Body Due to Wireless Communications Devices: Experimental Techniques". This draft of IEEE Standard Document defines "cheek" position as follows:

- 1) Ready the handset for talk operation, if necessary. For example, for handsets with a flip piece, open the flip.
- 2) Define two imaginary lines on the handset: the vertical centerline and the horizontal line. The vertical centerline passes through two points on the front side of the handset: the midpoint of the width  $w_t$  of the handset at the level of the acoustic output (point A on Figures 5.1a and 5.1b), and the midpoint of the width  $w_b$  of the bottom of the handset (point B). The horizontal line is perpendicular to the vertical centerline and passes through the center of the acoustic output (see Figure 5.1a). The two lines intersect at point A. Note that for many handsets, point A coincides with the center of the acoustic output. However, the acoustic output may be located elsewhere on the horizontal line. Also note that the vertical centerline is not necessarily parallel to the front face of the handset (see Figure 5.1b), especially for clamshell handsets, handsets with flip pieces, and other irregularly shaped handsets.
- 3) Position the handset close to the surface of the phantom such that point A is on the (virtual) extension of the line passing through points RE and LE on the phantom (see Figure 5.2), such that the plane defined by the vertical center line and the horizontal center line is in a plane approximately parallel to the sagittal plane of the phantom.
- 4) Translate the handset towards the phantom along the line passing through RE and LE until the handset touches the ear.
- 5) While maintaining the handset in this plane, rotate it around the LE-RE line until the vertical centerline is the plane normal to MB ("mouth-back") - NF ("neck-front") including the line MB (reference plane).
- 6) ("We are unable to follow instructions in this paragraph (6) until the SAM phantom is available.") Rotate the phone around the vertical centerline until the phone (horizontal line) is symmetrical with respect to the line NF.
- 7) While maintaining the vertical centerline in the reference plane, keeping point A on the line passing through RE and LE, and maintaining the phone contact with the ear, rotate the handset about the line NF until any point on the handset is in contact with the cheek of the phantom.

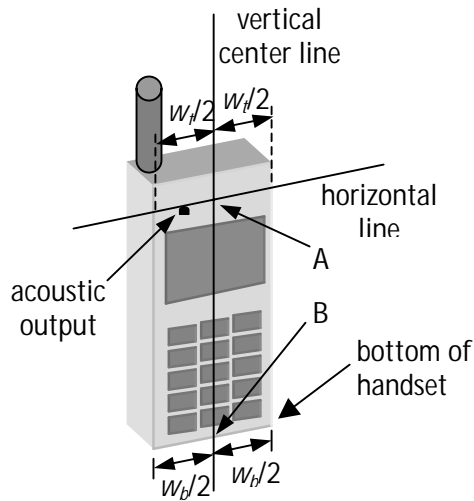


Figure 5.1a – Handset vertical and horizontal reference lines – fixed case

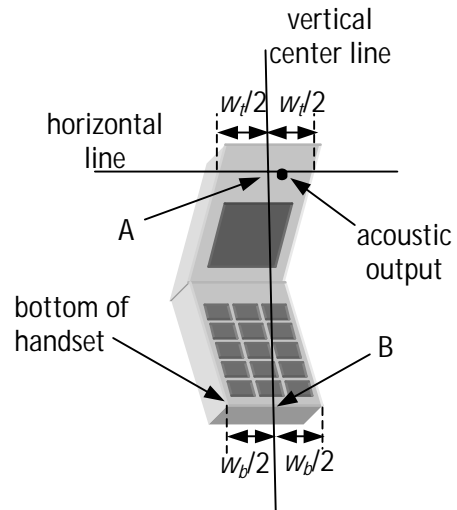


Figure 5.1b – Handset vertical and horizontal reference lines – “clam-shell”

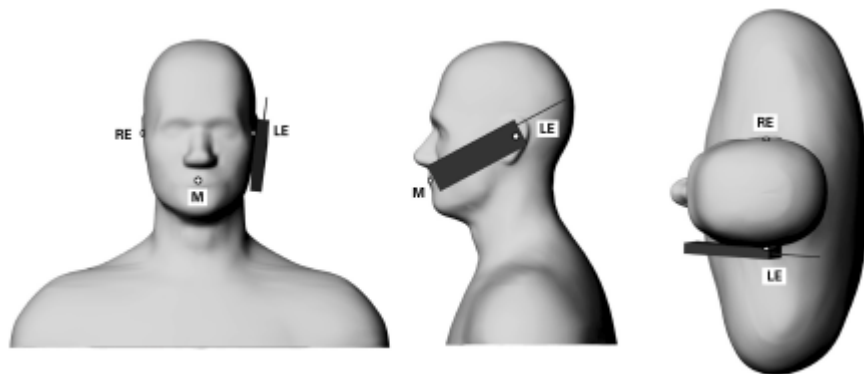


Figure 5.2 - “Cheek” position

The same draft document defines “tilted position” as

- 1) Repeat steps 1 to 7 of 5.4.1 (“*in this document 5.1.1*”) to place the device in the “cheek position.”
- 2) While maintaining the device in the reference plane (described above) and pivoting against the ear, move the device outward away from the mouth by an angle of 15 degrees, or until the antenna touches the phantom.

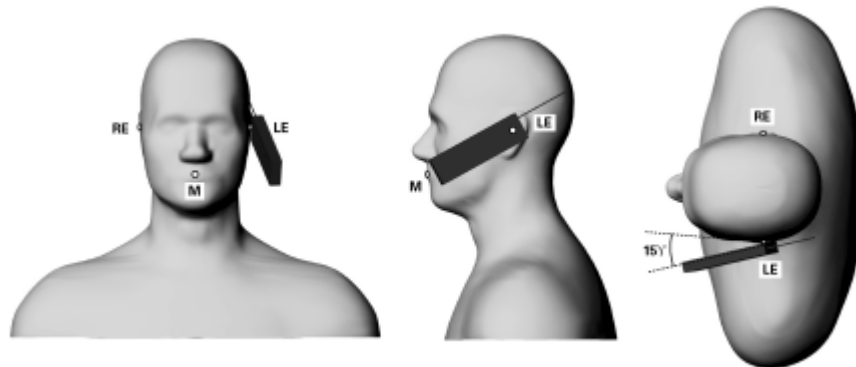


Figure 5.3 - "Tilted" position

Since LJONPC-1BG has a fixed case, the reference lines are defined in figure 5.1a.

#### 5.1.2 Body Worn Configuration

The body worn accessory listed in section 2.4 was tested for the FCC RF exposure compliance. The phone was positioned into carrying case and placed below of the flat phantom. Carrying case CBM-12 has opening for display/keypad on one side to allow positioning of the phone only in one way into carrying case.

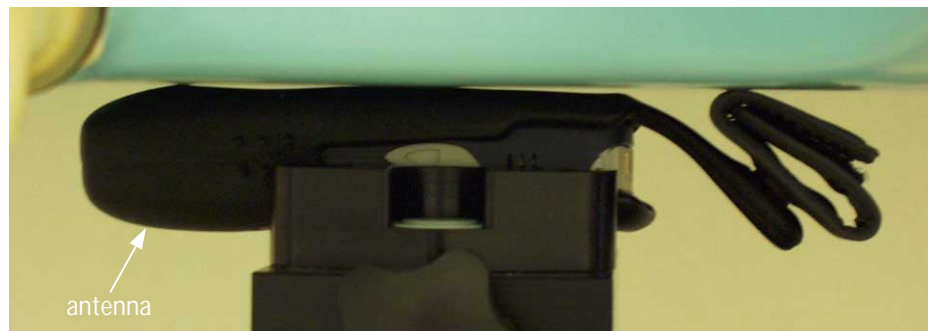


Figure 5.4 – Carrying Case CBM-12

#### 5.2 Scan Procedures

First coarse scans are used for quick determination of the field distribution. Next a cube scan, 5x5x7 mm, is performed around the highest E-field value to determine the averaged SAR-distribution over 1g.

#### 5.3 SAR Averaging Methods

The maximum SAR value is averaged over its volume using interpolation and extrapolation.

The interpolation of the points is done with a 3d-Spline. The 3d-Spline is composed of three one-dimensional splines with the "Not a knot" -condition [W. Gander, Computermathematik, p. 141-150] (x, y and z -directions) [Numerical Recipes in C, Second Edition, p 123].

The extrapolation is based on least square algorithm [W. Gander, Computermathematik, p.168-180]. Through the points in the first 30 mm in all z-axis, polynomials of order four are calculated. This polynomial is then used to evaluate the points between the surface and the probe tip. The points, calculated from the surface, have a distance of 1mm from one another.

## 6. MEASUREMENT UNCERTAINTY

### 6.1 Description of Individual Measurement Uncertainty

#### 6.1.1 Assessment Uncertainty

Uncertainty description	Error	Distrib.	Weight	St. Dev.
<b>Probe Uncertainty</b>				
- Axial Isotropy	$\pm 0.2$ dB	U-shape	0.5	$\pm 2.4\%$
- Spherical Isotropy	$\pm 0.4$ dB	U-shape	0.5	$\pm 4.8\%$
- Isotropy from Gradient	$\pm 0.5$ dB	U-shape	0	
- Spatial Resolution	$\pm 0.5$ %	Normal	1	$\pm 0.5\%$
- Linearity Error	$\pm 0.2$ dB	Rectang.	1	$\pm 2.7\%$
- Calibration Error	$\pm 3.6$ %	Normal	1	$\pm 3.6\%$
<b>Evaluation Uncertainty</b>				
- Data Acquisition Error	$\pm 1\%$	Rectang.	1	$\pm 0.6\%$
- ELF and RF Disturbances	$\pm 0.25\%$	Normal	1	$\pm 0.25\%$
- Dielectric Parameters	$\pm 10\%$	Rectang.	1	$\pm 5.8\%$
<b>Spatial Peak SAR Evaluation Uncertainty</b>				
- Extrapolation	$\pm 3\%$	Normal	1	$\pm 3\%$
- Probe Positioning Error	$\pm 0.1$ mm	Normal	1	$\pm 1\%$
- Cube	$\pm 3\%$	Normal	1	$\pm 3\%$
- Orientation/Integration				
- Cube Shape Inaccuracies	$\pm 2\%$	Rectang.	1	$\pm 1.2\%$
<b>Total Measurement Uncertainty</b>				$\pm 10.2\%$

#### 6.1.2 Source Uncertainty

Uncertainty description	Error	Distrib.	Weight	St. Dev.
- Device Positioning	$\pm 6\%$	Normal	1	$\pm 6\%$
- Laboratory Setup	$\pm 3\%$	Normal	1	$\pm 3\%$
<b>Total Source Uncertainty</b>				$\pm 6.7\%$

#### 6.1.3 Combined Uncertainty

Uncertainty description	Uncertainty
- Total Assessment Uncertainty	$\pm 10.2\%$
- Total Source Uncertainty	$\pm 6.7\%$
<b>Combined Uncertainty (Assessment &amp; Source)</b>	$\pm 12.2\%$
<b>Extended Uncertainty (k=2)</b>	$\pm 24\%$

## 7. RESULTS

Corresponding SAR distribution printouts of maximum results in each operating mode are shown in Appendix B.

### 7.1 Head Configuration

Mode	Channel/ <i>f</i> [MHz]	Power [dBm]	SAR, averaged over 1g [mW/g]			
			Left-hand		Right-hand	
			Cheek	Tilted	Cheek	Tilted
AMPS 800	991/824.04	25.5	1.04	0.98	1.01	0.89
	380/836.40	25.5	1.09	1.03	<b>1.12</b>	0.95
	799/848.97	25.6	0.93	0.84	0.95	0.83
TDMA 800	991/824.04	27.1	0.49	0.47	0.50	0.43
	380/836.40	27.1	<b>0.51</b>	0.48	0.50	0.44
	799/848.97	27.1	0.50	0.47	0.49	0.43

### 7.2 Body Worn Configuration

Mode	Channel/ <i>f</i> [MHz]	Power [dBm]	SAR, averaged over 1g [mW/g]
			CBM-12
AMPS 800	991/824.04	25.5	<b>0.80</b>
	380/836.40	25.5	0.73
	799/848.97	25.6	0.49
TDMA 800	991/824.04	27.1	<b>0.38</b>
	380/836.40	27.1	0.34
	799/848.97	27.1	0.27

## **APPENDIX A.**

### **Validation Test Printouts**

# Dipole 835 MHz

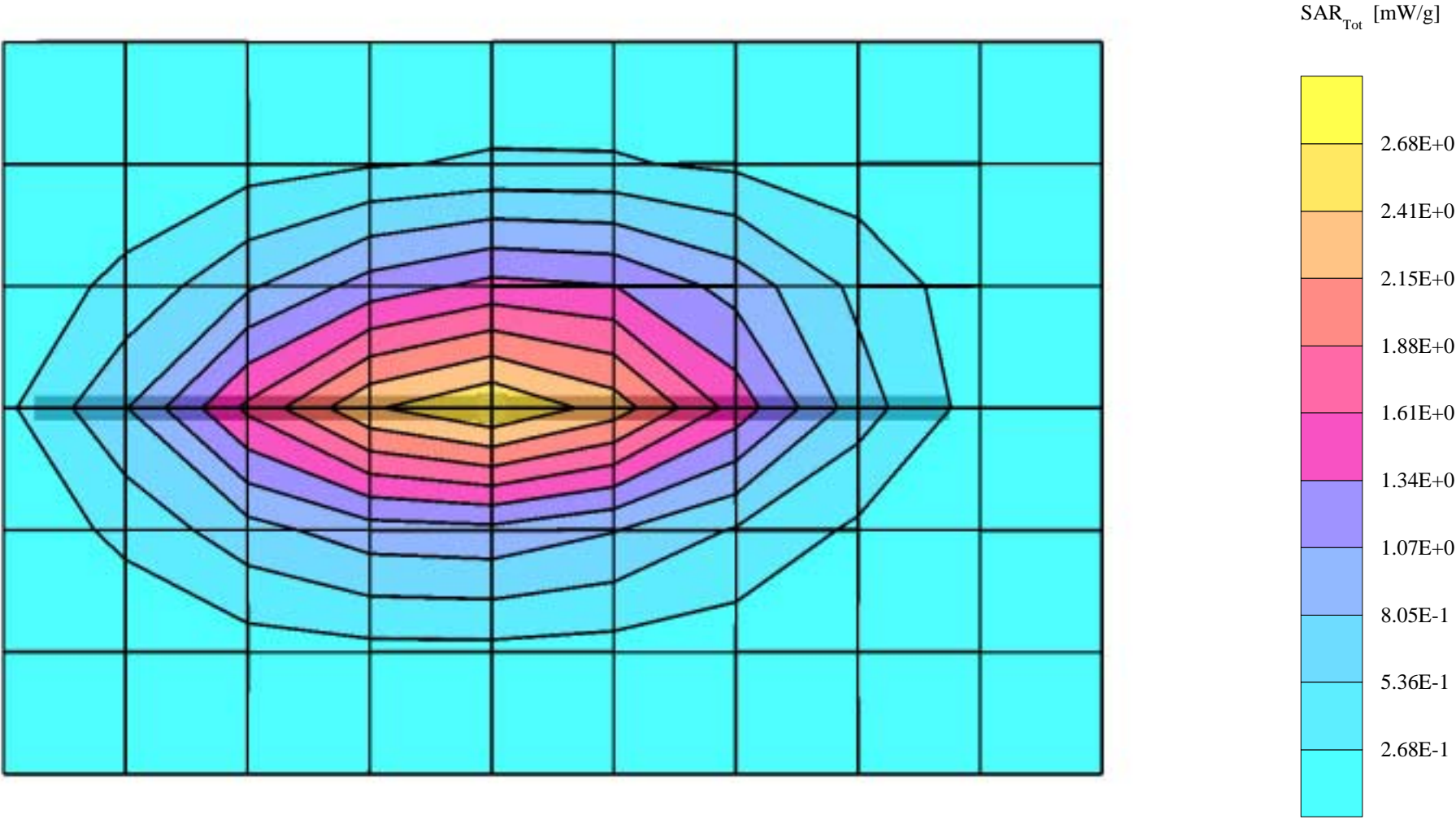
Generic Twin 1; Flat

Probe: ET3DV6 - SN1379; ConvF(6.24,6.24,6.24); Crest factor: 1.0; Brain 836 MHz SCC34:  $\sigma = 0.91 \text{ mho/m}$   $\epsilon = 40.9$   $\rho = 1.00 \text{ g/cm}^3$

Cubes (2): Peak:  $3.90 \text{ mW/g} \pm 0.07 \text{ dB}$ , SAR (1g):  $2.46 \text{ mW/g} \pm 0.07 \text{ dB}$ , SAR (10g):  $1.58 \text{ mW/g} \pm 0.07 \text{ dB}$ ,

Penetration depth: 12.0 (10.8, 13.5) [mm]

Powerdrift: -0.03 dB





# Dipole 835 MHz

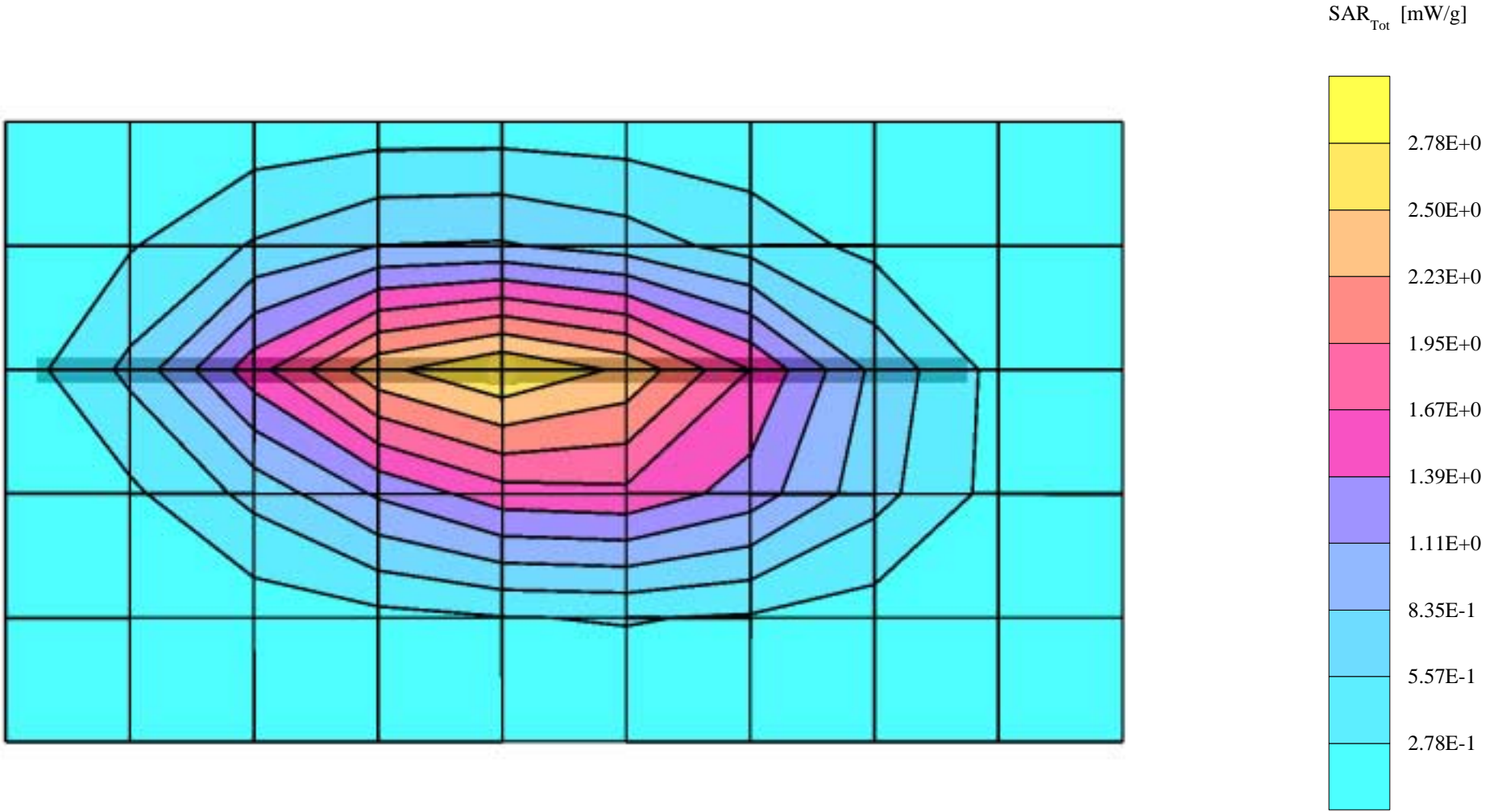
Generic Twin 2; Flat

Probe: ET3DV6 - SN1379; ConvF(5.91,5.91,5.91); Crest factor: 1.0; Muscle 836 MHz:  $\sigma = 0.95 \text{ mho/m}$   $\epsilon = 55.3$   $\rho = 1.00 \text{ g/cm}^3$

Cubes (2): Peak:  $4.13 \text{ mW/g} \pm 0.07 \text{ dB}$ , SAR (1g):  $2.66 \text{ mW/g} \pm 0.06 \text{ dB}$ , SAR (10g):  $1.74 \text{ mW/g} \pm 0.06 \text{ dB}$ ,

Penetration depth: 12.9 (11.5, 14.7) [mm]

Powerdrift: -0.01 dB

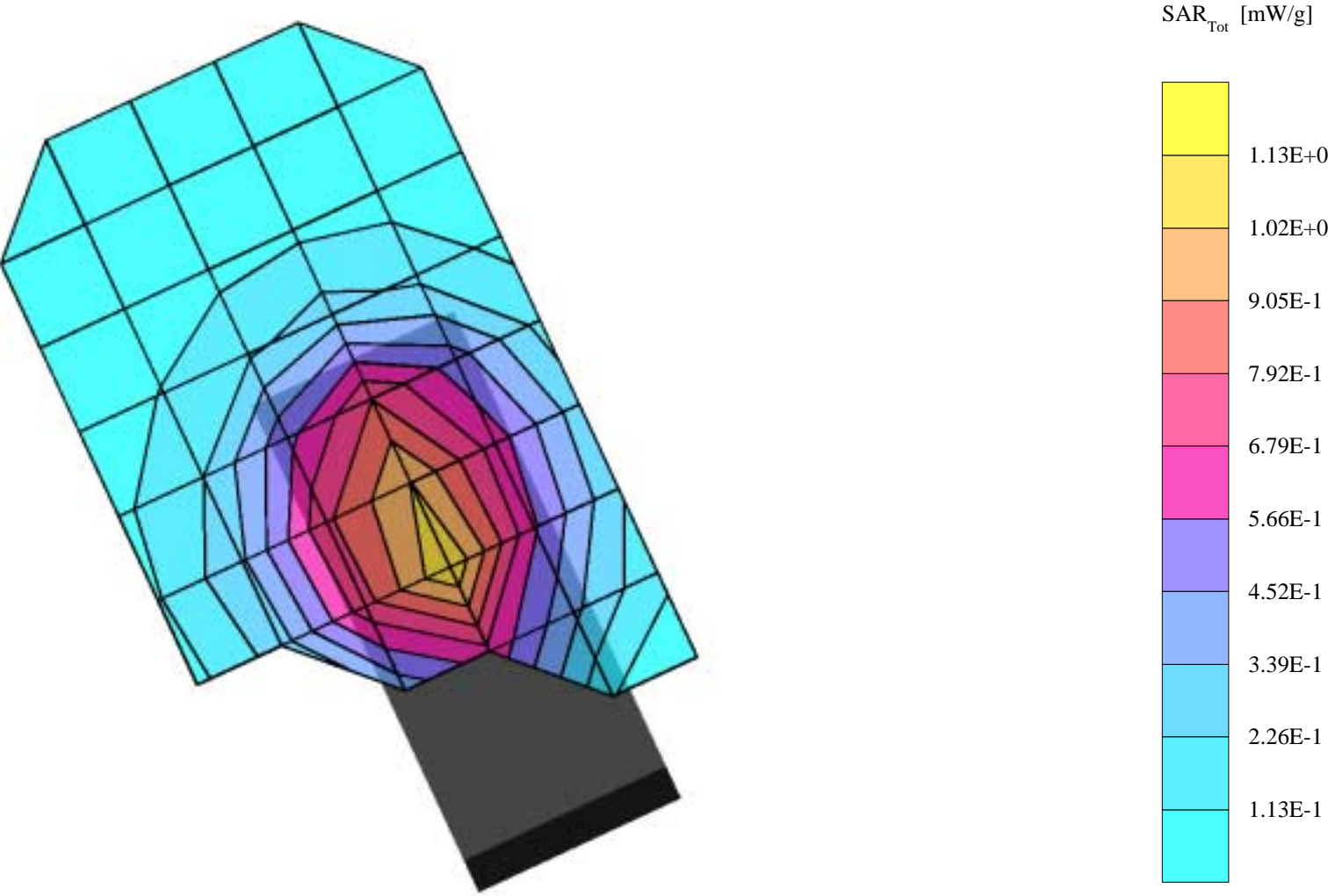


## **APPENDIX B.**

### **SAR Distribution Printouts**

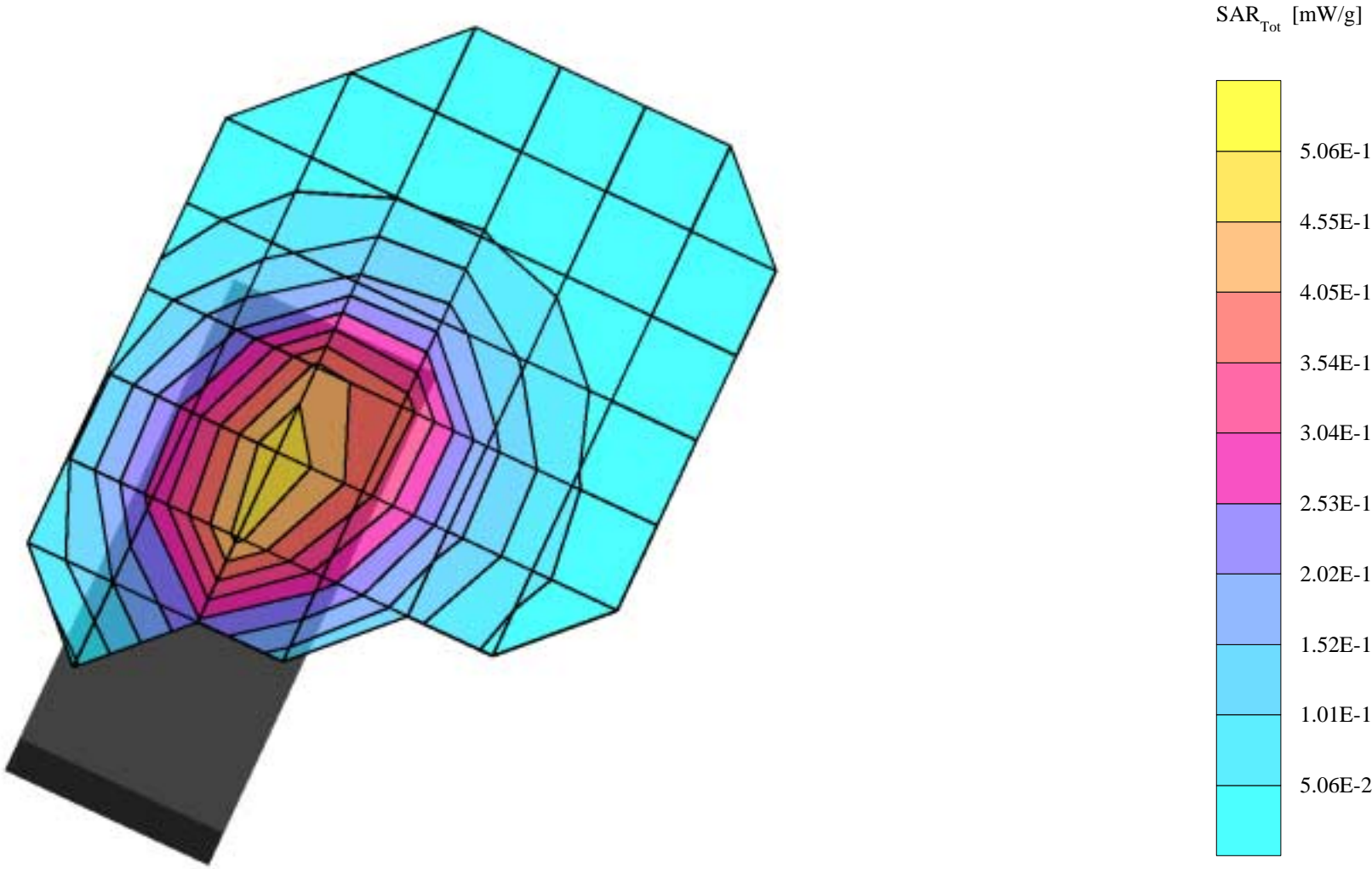
# LJONPC-1BG

Generic Twin 1 Phantom; Right Hand Section; Position: Cheek; Frequency: 836 MHz  
Probe: ET3DV6 - SN1379; ConvF(6.24,6.24,6.24); Crest factor: 1.0; Brain 836 MHz SCC34:  $\sigma = 0.91 \text{ mho/m}$   $\epsilon = 40.9$   $\rho = 1.00 \text{ g/cm}^3$   
Cube 5x5x7: SAR (1g): 1.12 mW/g, SAR (10g): 0.785 mW/g,  
Coarse: Dx = 20.0, Dy = 20.0, Dz = 10.0  
Powerdrift: 0.16 dB



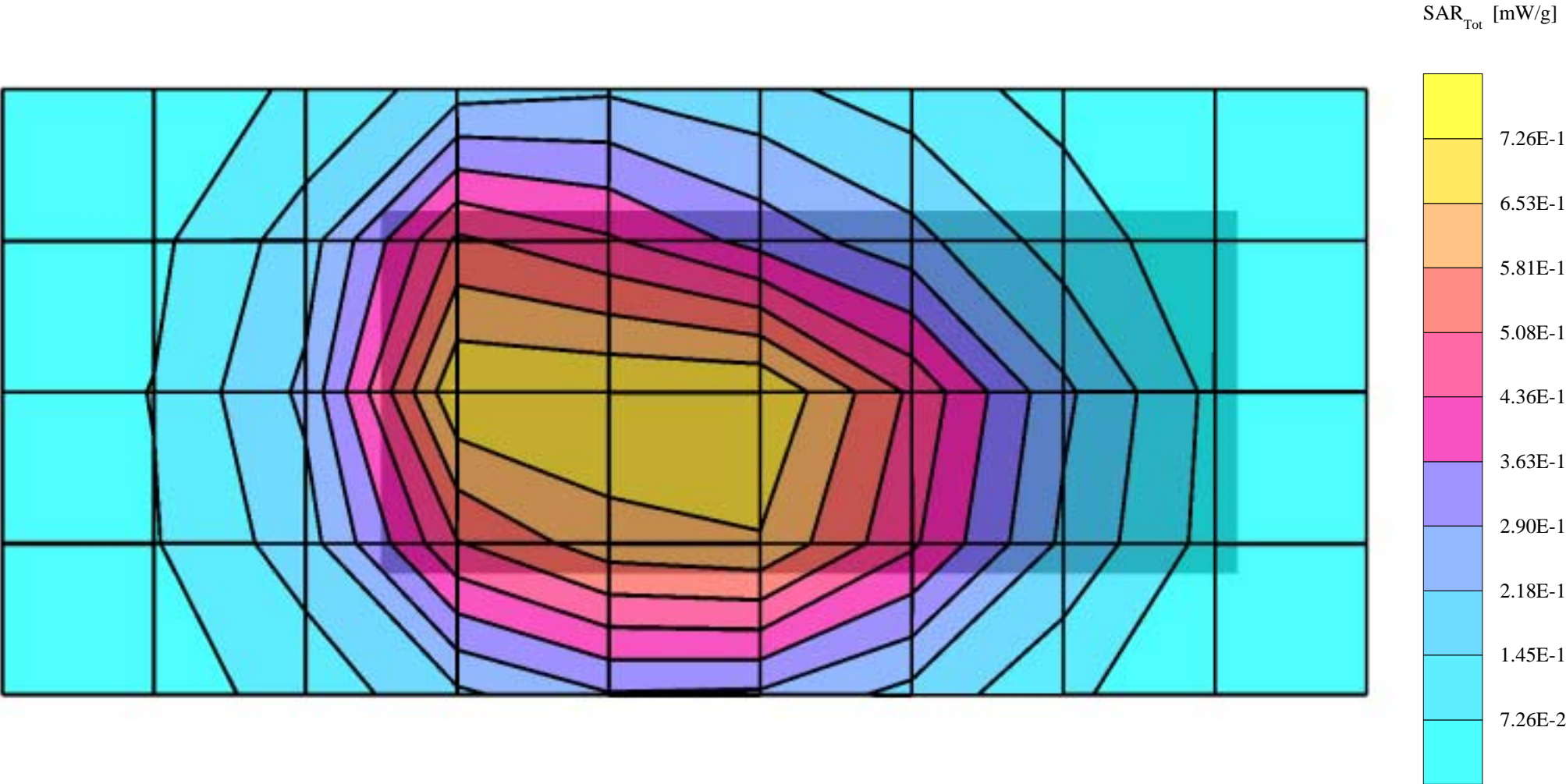
# LJONPC-1BG

Generic Twin 1 Phantom; Left Hand Section; Position: Cheek; Frequency: 836 MHz  
Probe: ET3DV6 - SN1379; ConvF(6.24,6.24,6.24); Crest factor: 3.0; Brain 836 MHz SCC34:  $\sigma = 0.91$  mho/m  $\epsilon = 40.9$   $\rho = 1.00$  g/cm<sup>3</sup>  
Cube 5x5x7: SAR (1g): 0.508 mW/g, SAR (10g): 0.355 mW/g,  
Coarse: Dx = 20.0, Dy = 20.0, Dz = 10.0  
Powerdrift: 0.01 dB



# LJONPC-1BG, CBM-12

Generic Twin 2 Phantom; Flat Section; Position: body worn; Frequency: 824 MHz  
Probe: ET3DV6 - SN1379; ConvF(5.91,5.91,5.91); Crest factor: 1.0; Muscle 824 MHz:  $\sigma = 0.94$  mho/m  $\epsilon = 55.3$   $\rho = 1.00$  g/cm<sup>3</sup>  
Cube 5x5x7: SAR (1g): 0.800 mW/g, SAR (10g): 0.572 mW/g,  
Coarse: Dx = 20.0, Dy = 20.0, Dz = 10.0  
Powerdrift: 0.24 dB





# LJONPC-1BG, CBM-12

Generic Twin 2 Phantom; Flat Section; Position: body worn; Frequency: 824 MHz  
Probe: ET3DV6 - SN1379; ConvF(5.91,5.91,5.91); Crest factor: 3.0; Muscle 824 MHz:  $\sigma = 0.94$  mho/m  $\epsilon = 55.3$   $\rho = 1.00$  g/cm<sup>3</sup>  
Cube 5x5x7: SAR (1g): 0.382 mW/g, SAR (10g): 0.273 mW/g,  
Coarse: Dx = 20.0, Dy = 20.0, Dz = 10.0  
Powerdrift: 0.01 dB

