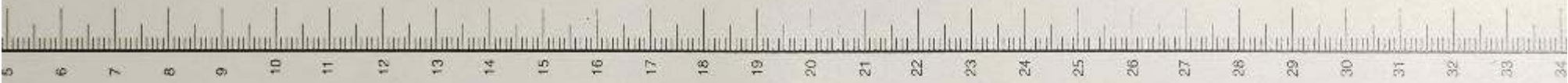
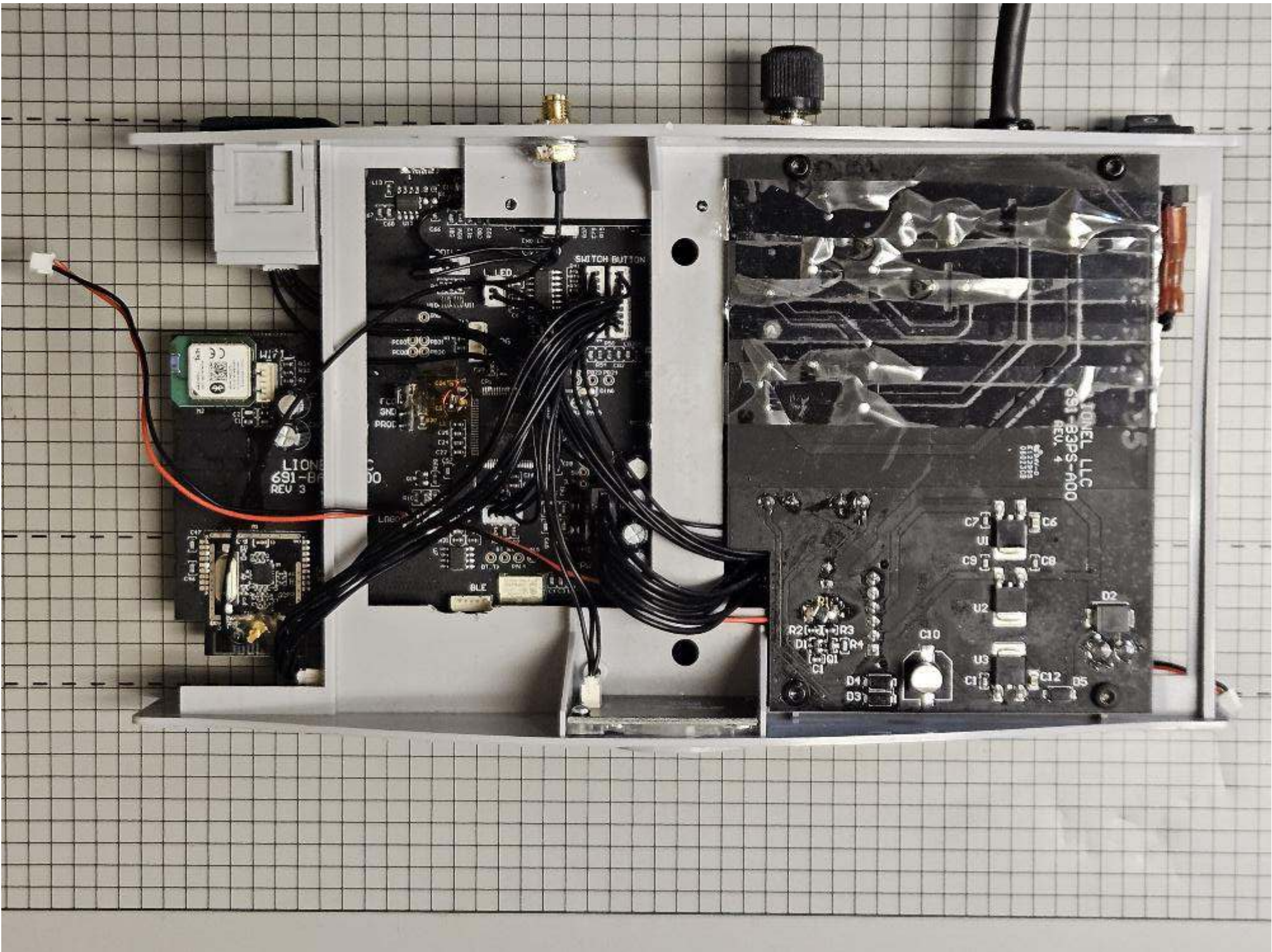


● AC/L  
● AC/N  
**MMW**  
MEANWELL  
IRM-60-12  
(臺灣電源供應器)  
INPUT (輸入): 100-240VAC 1.8A 50/60Hz  
277VAC  
0.9A 50/60Hz  
(277VAC for North America only)  
OUTPUT (輸出): 12V 5A  
LPS  
MEAN WELL ELECTRONICS CO., LTD.  
No. 28, Wenxian 3rd Rd, Wenxian Dist, Jiaxing, Zhejiang, China, 314591  
Tel: +86 573 3920000  
Fax: +86 573 3920001  
E-mail: [info@meanwell.com](mailto:info@meanwell.com)  
www.meanwell.com/manual.html  
S2209 (Rev. 1.0) MADE IN CHINA, P/N: MZ

031523-13












EARTH

AC\_H

AC\_N

  
 F1  
 Del 0697K  
 315M 3571/08

AC\_L

- AC/L
- AC/N



(型號)(電源供應器)

**IRM-60-12**

INPUT (輸入): 100-240VAC 1.8A 50/60Hz  
 277VAC 0.9A 50/60Hz  
 (277VAC for North America only)

OUTPUT (輸出): 12V  5A







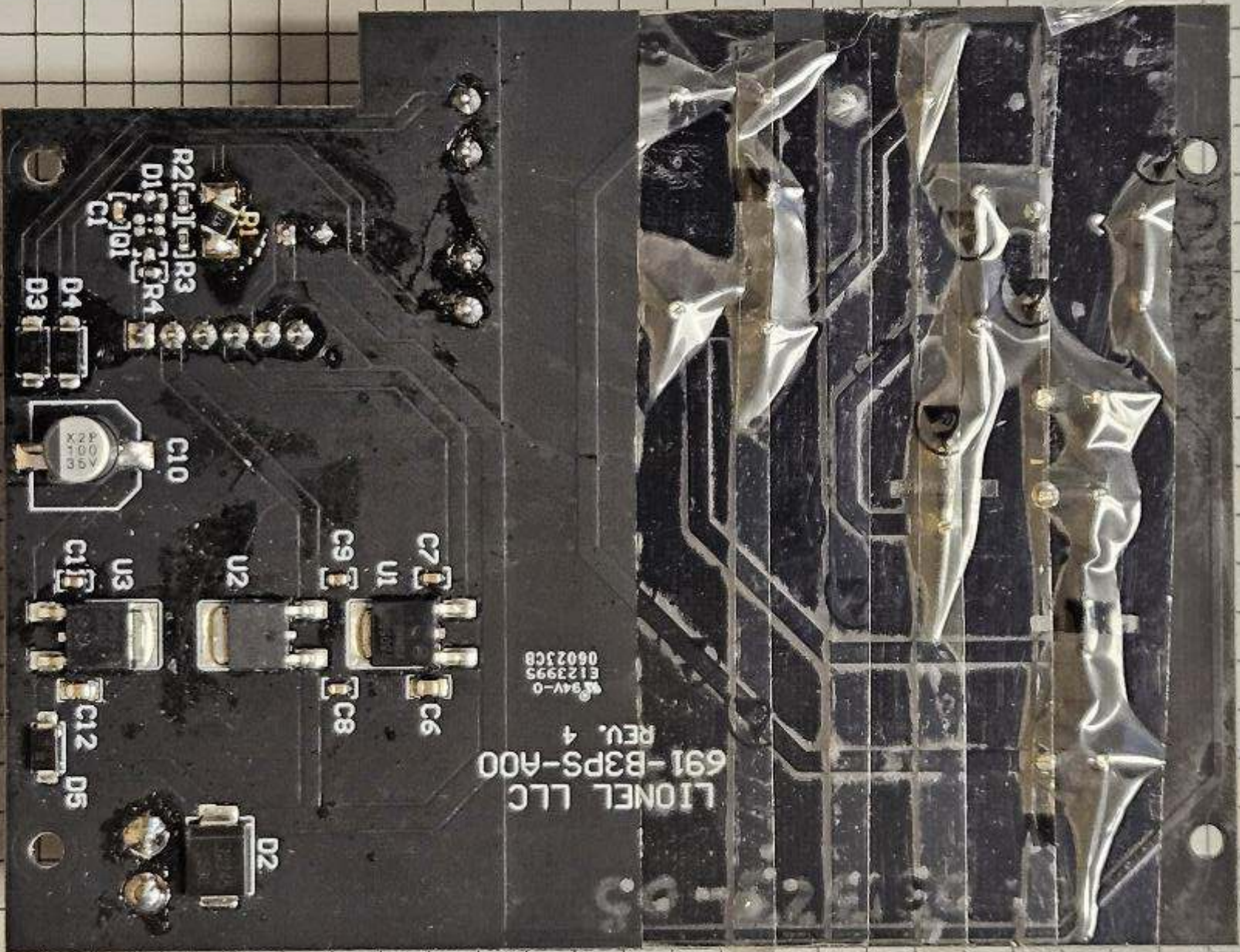




MEAN WELL ENTERPRISES CO.,LTD.  
 No.28,Wuquan 3rd Rd.,Wugu Dist.,New Taipei City 24891, Taiwan  
 Manual: [www.meanwell.com/manual.html](http://www.meanwell.com/manual.html)  
 S2209 (中國製造) MADE IN CHINA MW02

-V   
 +V 





LIONEL LLC  
691-B3PS-A00  
REV. 4  
9834V-0  
E123995  
06023CB

R2  
D1  
C1

D4  
D3

C10  
533  
001  
42X

U3  
C11

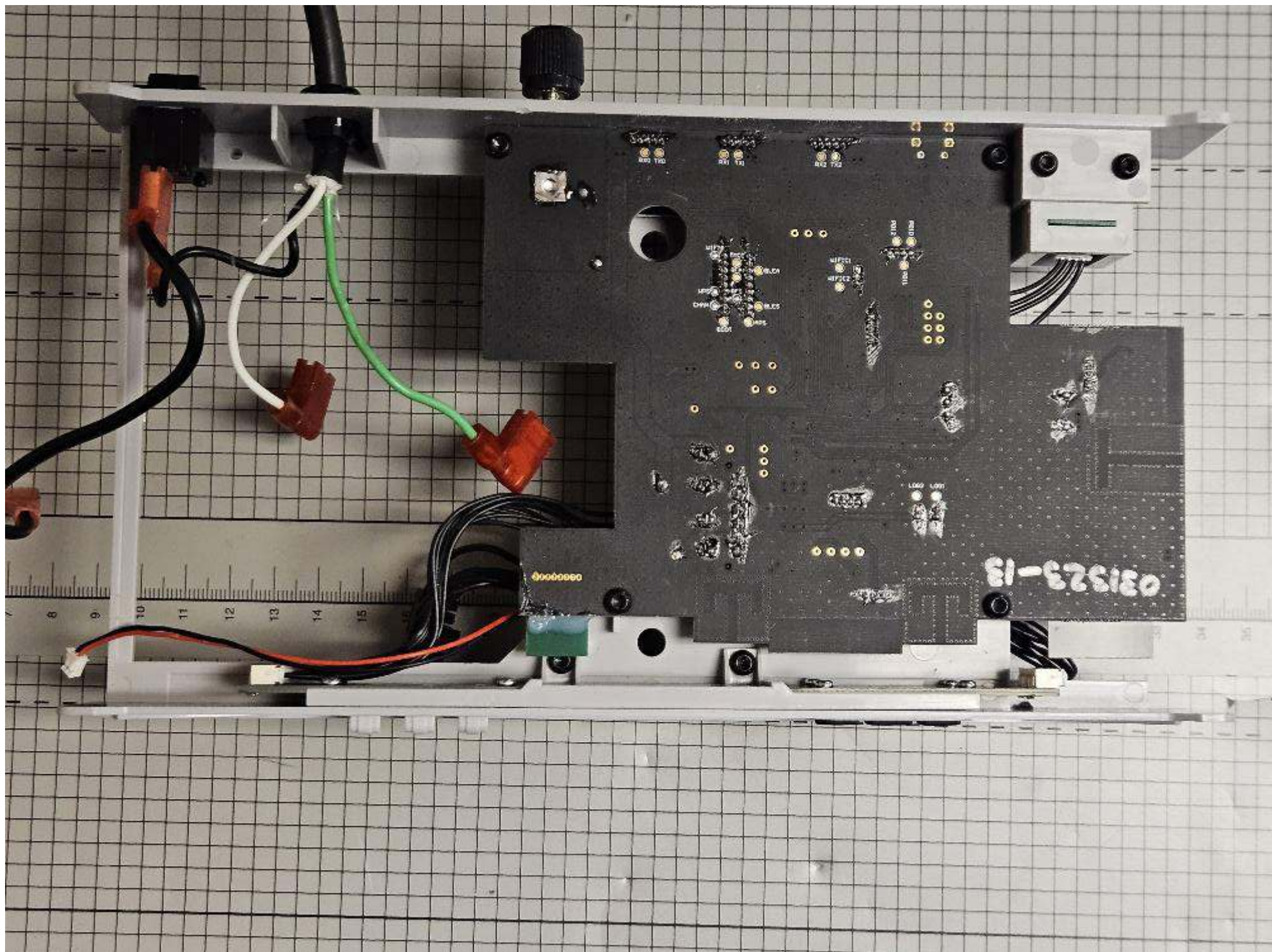
U2

C7  
U1  
C9  
C8  
C6

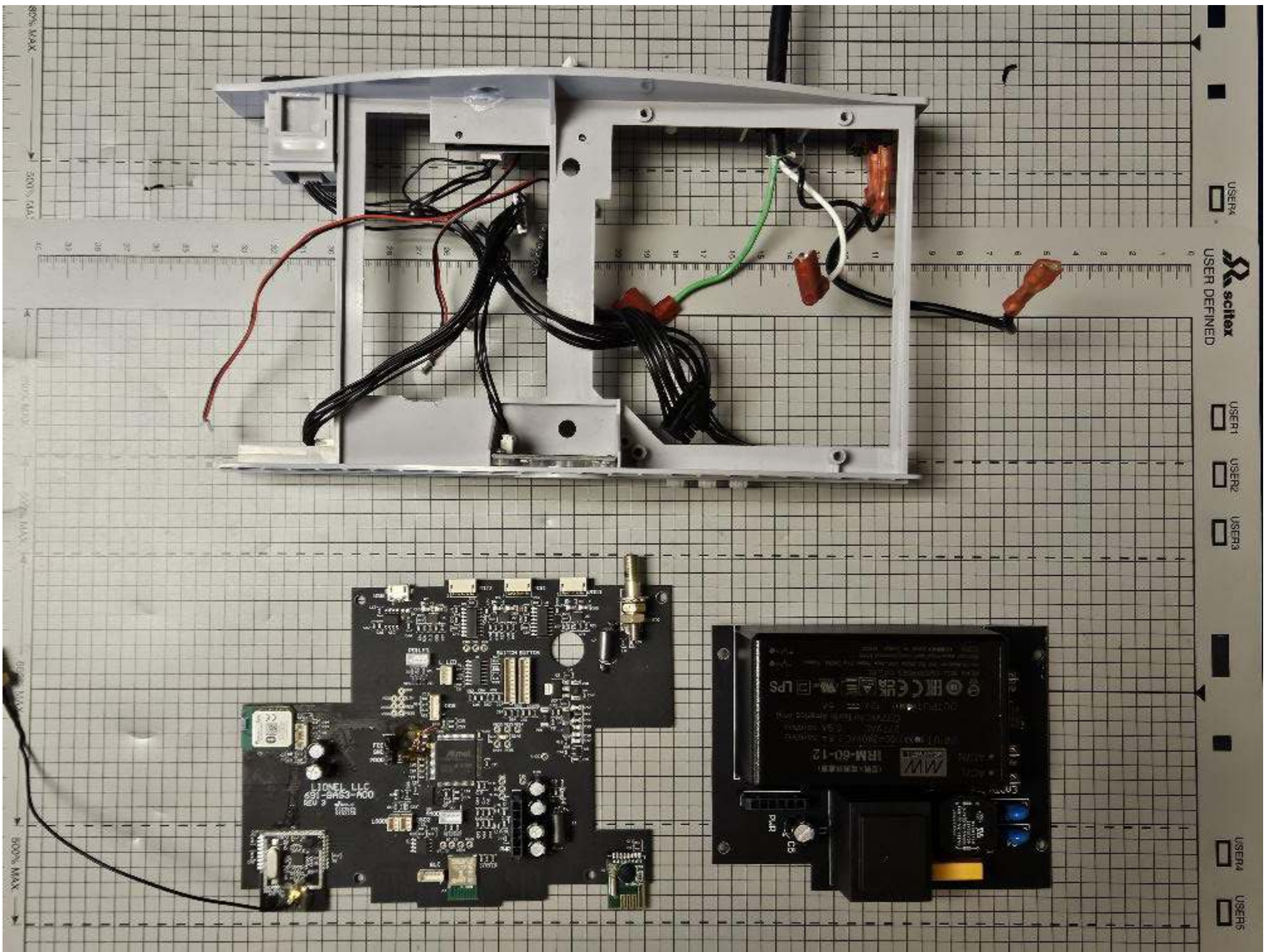
C12  
D5

D2





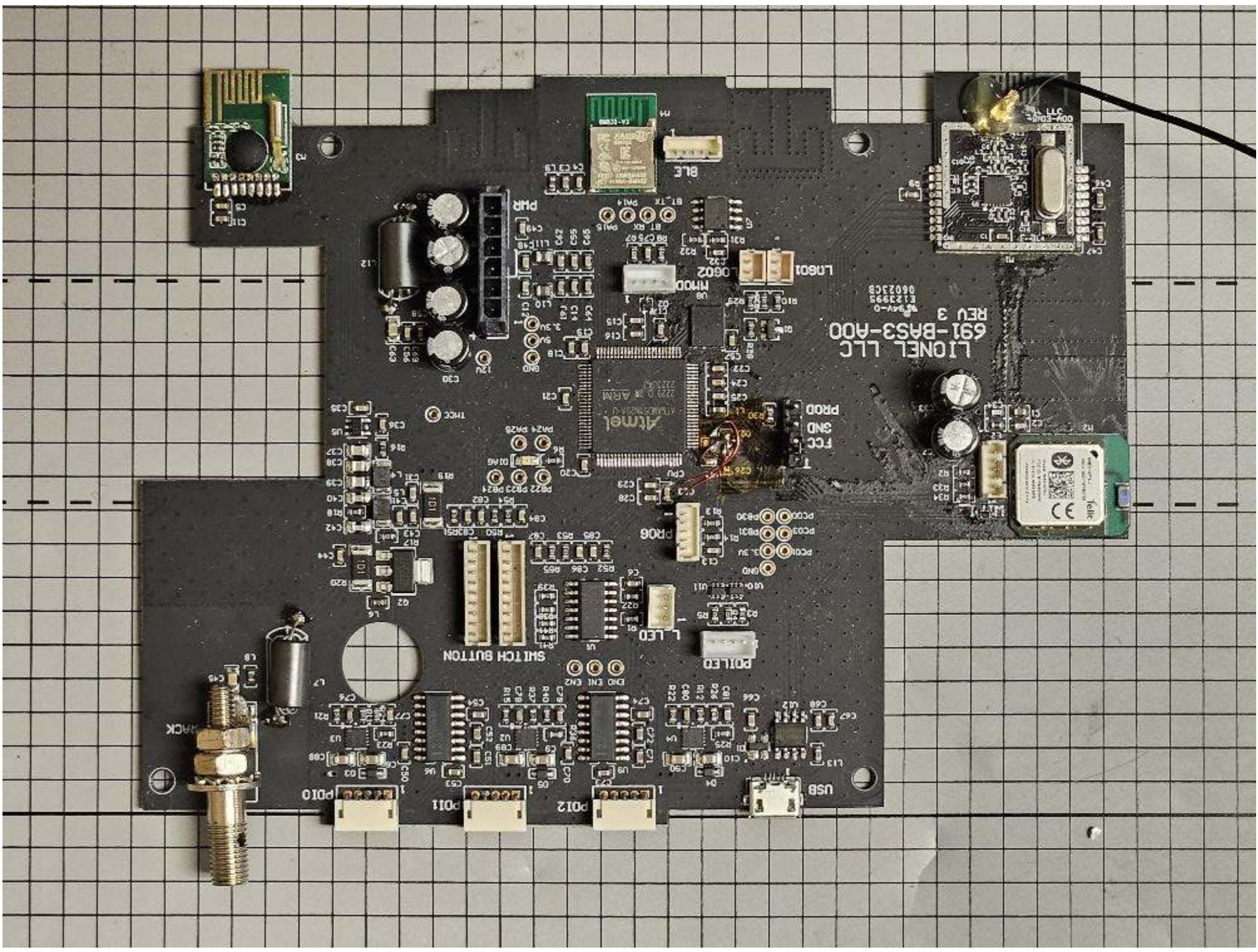












LIONEL LLC  
691-BAS3-A00  
REV 3

Atmel  
ATmega328P



PR06  
SND  
FCC

SM1CH BUTON

P0LED

USB

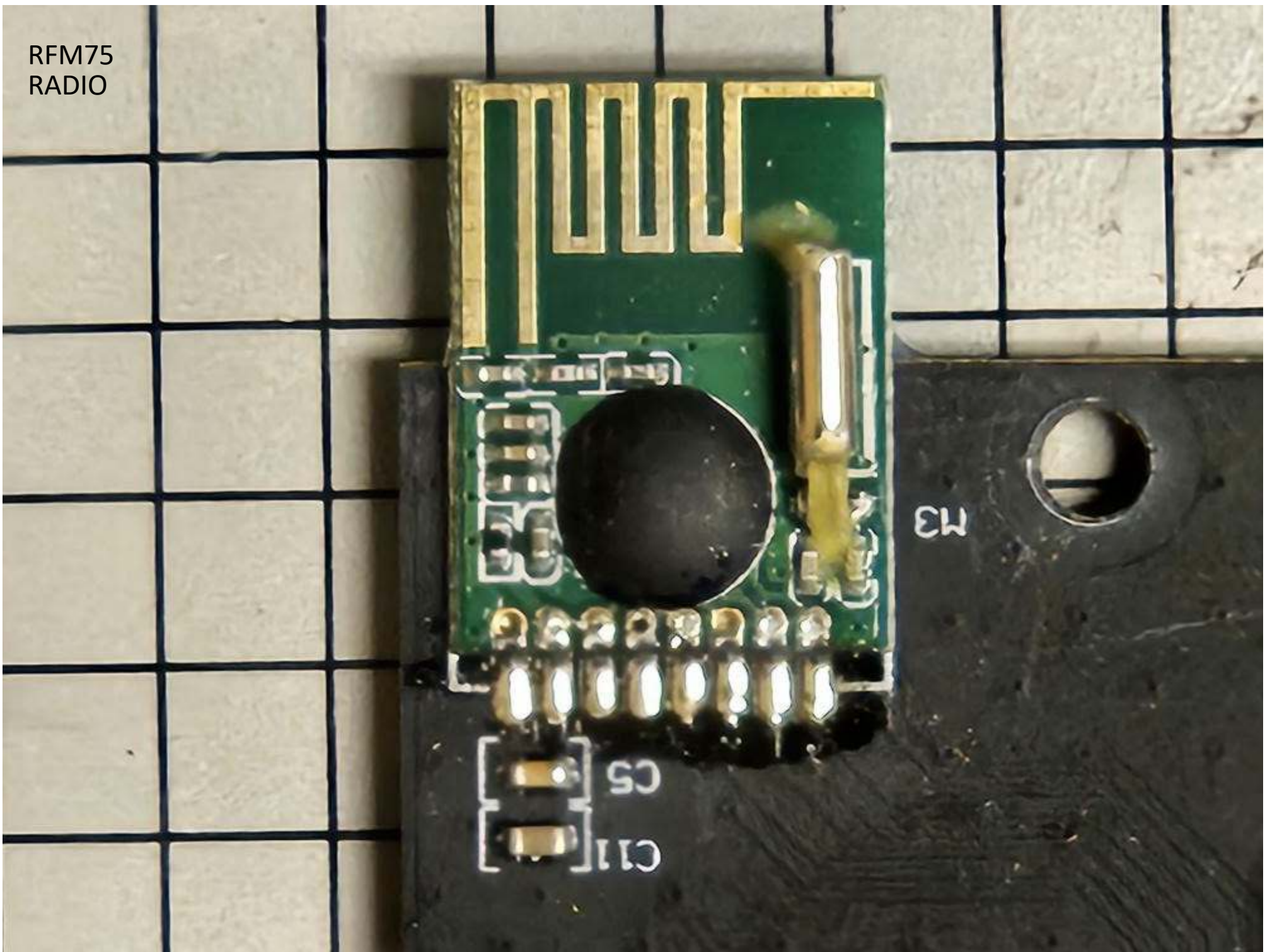
P012

P011

P010



RFM75  
RADIO





BLE RADIO - PRECERTIFIED



BM832-V3

© 2014 ROHM CO., LTD.  
ROHM CO., LTD.  
4-1-1, SHIMIZU 1-CHOME, HIRAKAWA-KU, KYOTO-SHI, KYOTO, JAPAN  
TEL: 81-75-823-4100 FAX: 81-75-823-4101  
E-MAIL: info@rohm.com  
ROHM ELECTRONICS (USA) INC.  
3030 CENTRE EXCHANGE BLVD., SUITE 200, FOLSOM, CA 95630, USA  
TEL: 916-977-3000 FAX: 916-977-3001  
E-MAIL: info@rohm.com

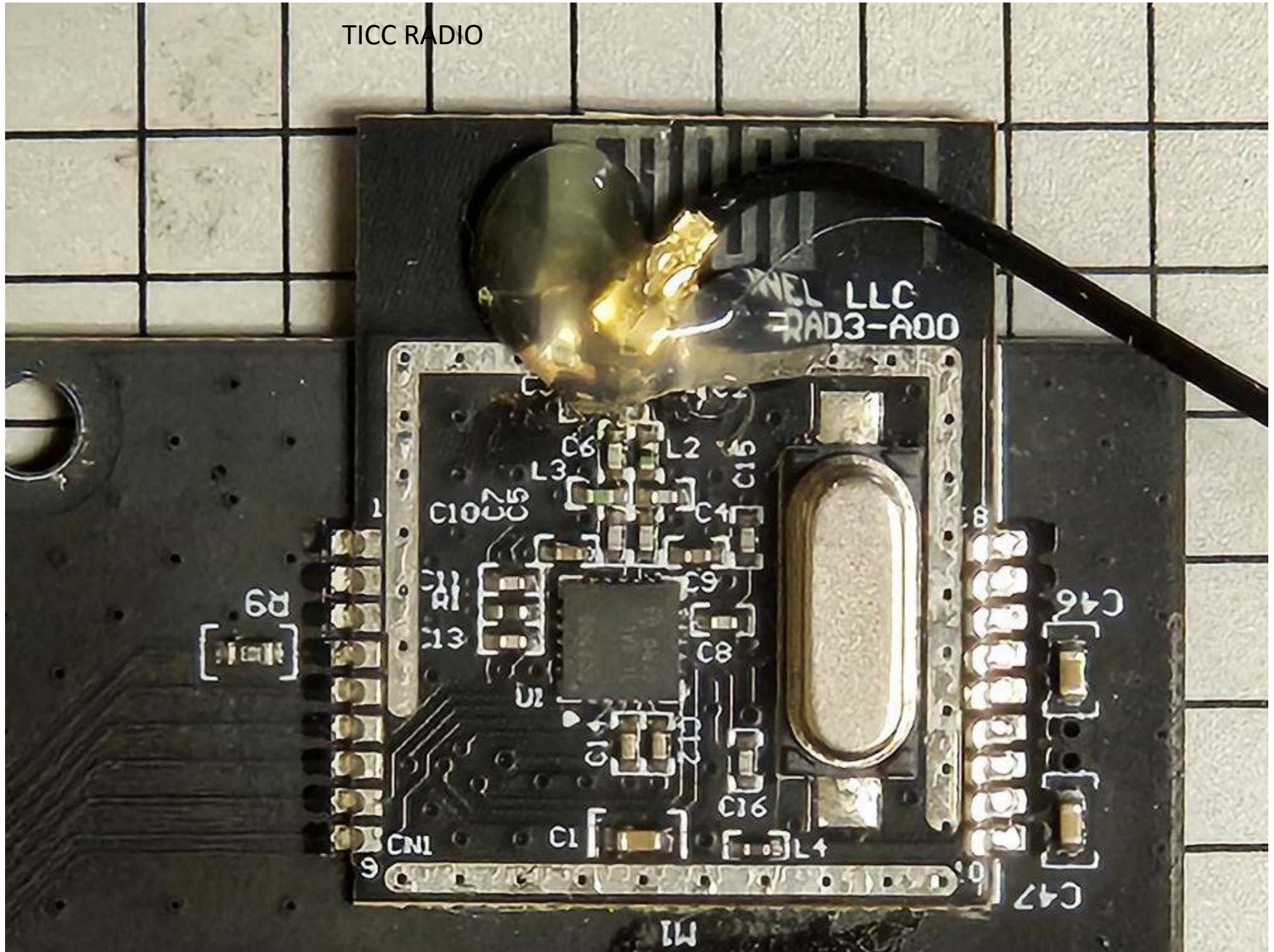
C1

14

14



TICC RADIO





WLAN RADIO - PRECERTIFIED



WE310F5-1  
MAC: 00217E7B0139

**felit**

Model: WE310F6-1  
FCC ID: R17WE310F6  
IC: 6131A-WE310F6  
Assembled in China



TICC RP-SMA CONNECTOR

PD10

PD11

PD12

