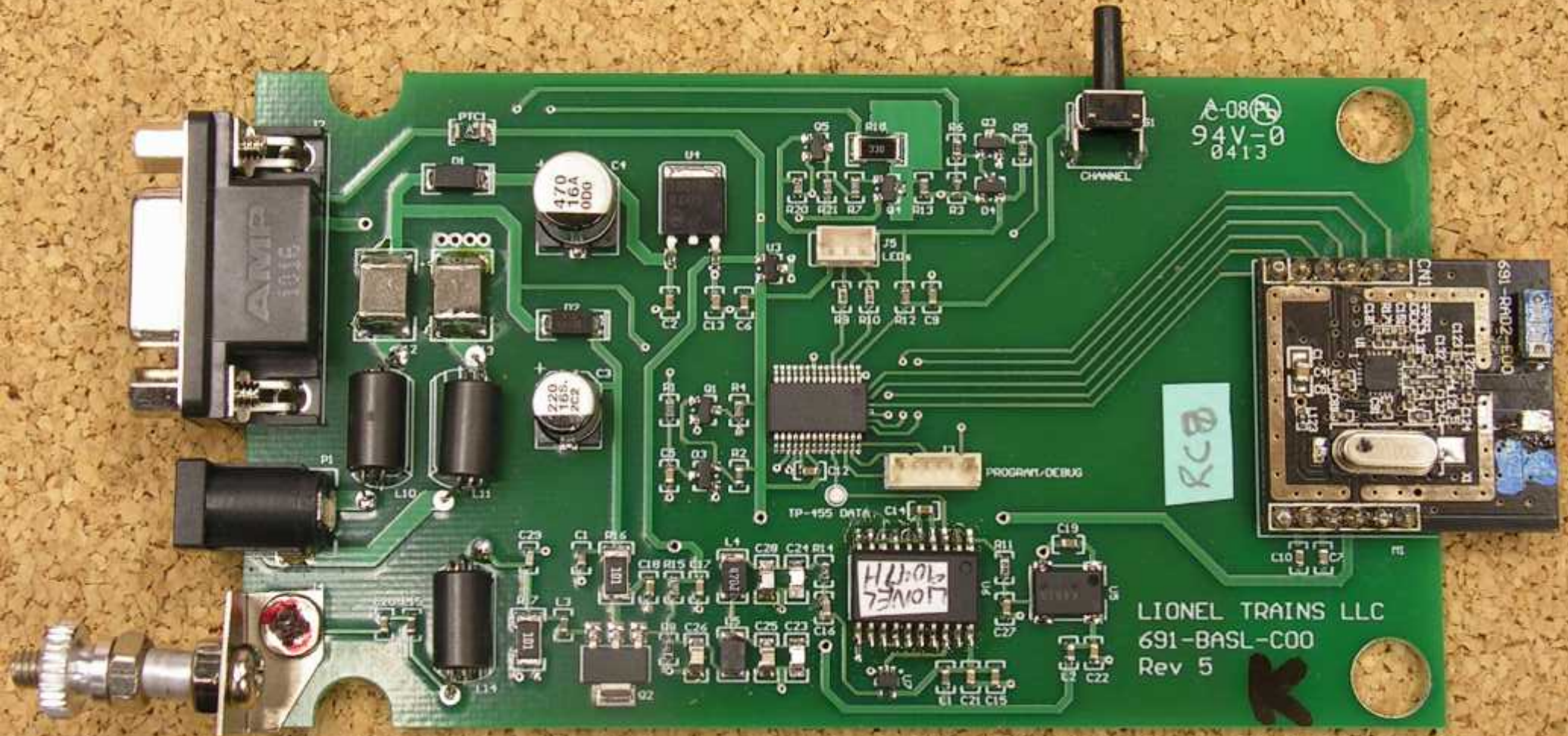


MADE IN CHINA
FCC ID: K141
NO USER SERVICE
DO NOT OPEN THE CASE
DO NOT REMOVE THE BATTERY
DO NOT REMOVE THE COVER
DO NOT REMOVE THE BATTERY
DO NOT REMOVE THE COVER
DO NOT REMOVE THE BATTERY
DO NOT REMOVE THE COVER

FCC #2



A-08
94V-0
0413

RCB

LIONEL TRAINS LLC
691-BASL-C00
Rev 5



LIONEL
9017H

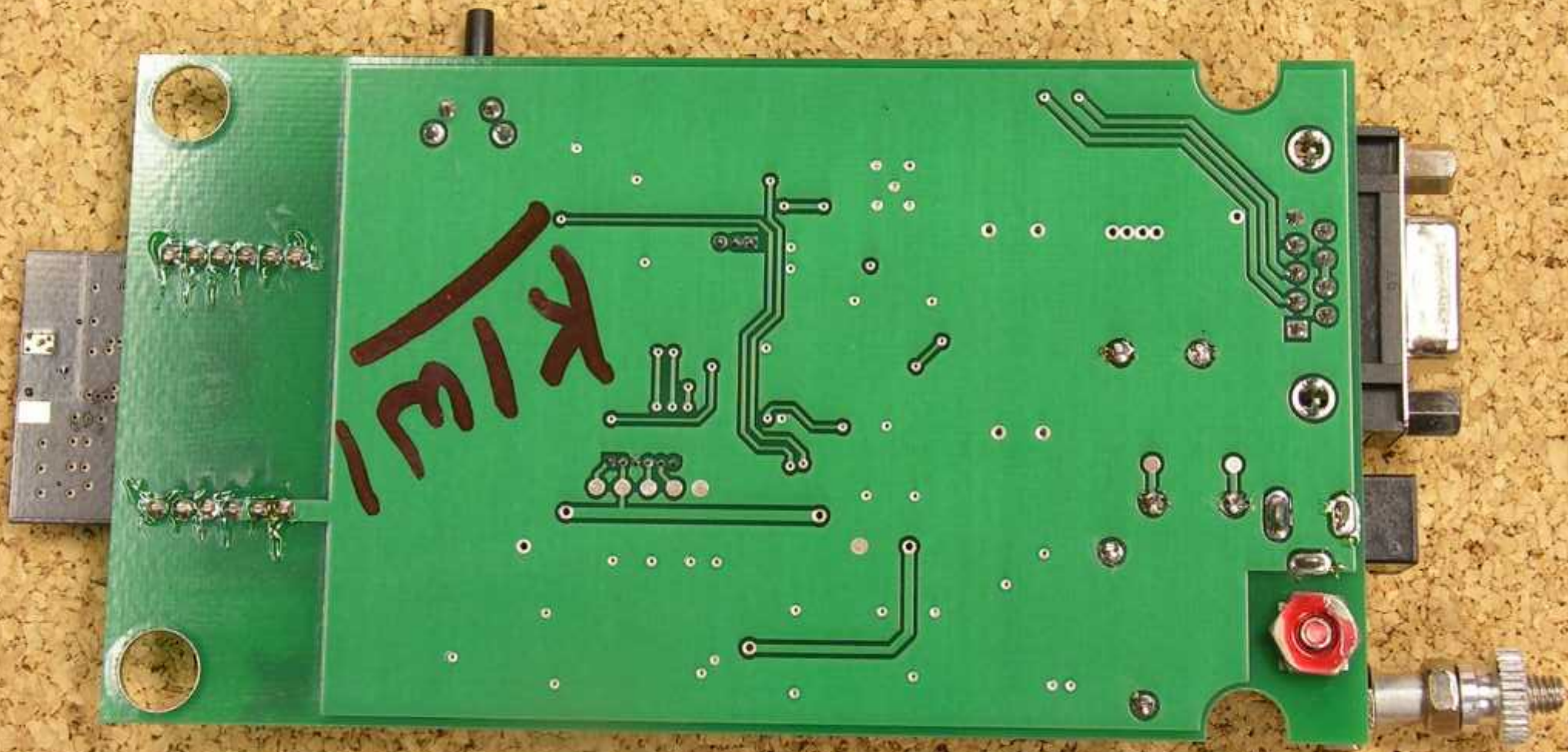
470
16A
9000

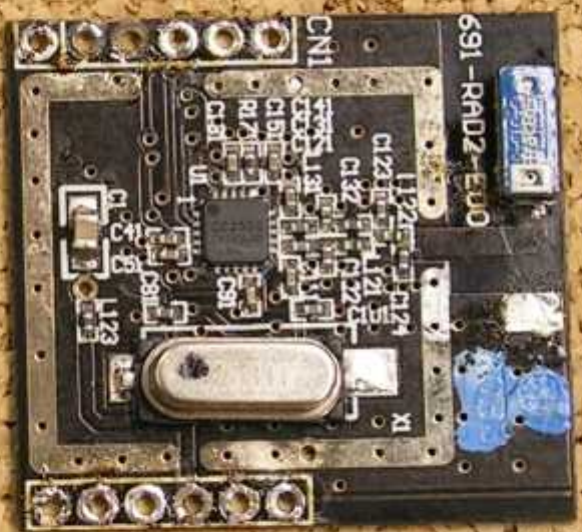
220
16S
2C2

CHANNEL

PROGRAM/DEBUG

TP-155 DATA







691-RAD2-E00

CN1

The central part of the PCB features a complex layout of components. A large, dark square integrated circuit (IC) is the central focus, with the text 'C250' and '1805' printed on its top surface. Surrounding this IC are numerous smaller components, including resistors (labeled R17, R18, R19, R20, R21, R22, R23, R24, R25, R26, R27, R28, R29, R30, R31, R32, R33, R34, R35, R36, R37, R38, R39, R40, R41, R42, R43, R44, R45, R46, R47, R48, R49, R50, R51, R52, R53, R54, R55, R56, R57, R58, R59, R60, R61, R62, R63, R64, R65, R66, R67, R68, R69, R70, R71, R72, R73, R74, R75, R76, R77, R78, R79, R80, R81, R82, R83, R84, R85, R86, R87, R88, R89, R90, R91, R92, R93, R94, R95, R96, R97, R98, R99, R100) and capacitors (labeled C123, C132, C121, C124, C125, C126, C127, C128, C129, C130, C131, C132, C133, C134, C135, C136, C137, C138, C139, C140, C141, C142, C143, C144, C145, C146, C147, C148, C149, C150, C151, C152, C153, C154, C155, C156, C157, C158, C159, C160, C161, C162, C163, C164, C165, C166, C167, C168, C169, C170, C171, C172, C173, C174, C175, C176, C177, C178, C179, C180, C181, C182, C183, C184, C185, C186, C187, C188, C189, C190, C191, C192, C193, C194, C195, C196, C197, C198, C199, C200). There are also several inductors (labeled L123, L124, L125, L126, L127, L128, L129, L130, L131, L132, L133, L134, L135, L136, L137, L138, L139, L140, L141, L142, L143, L144, L145, L146, L147, L148, L149, L150, L151, L152, L153, L154, L155, L156, L157, L158, L159, L160, L161, L162, L163, L164, L165, L166, L167, L168, L169, L170, L171, L172, L173, L174, L175, L176, L177, L178, L179, L180, L181, L182, L183, L184, L185, L186, L187, L188, L189, L190, L191, L192, L193, L194, L195, L196, L197, L198, L199, L200). A large, silver, oval-shaped component is located in the lower right quadrant, with the text 'C26.000F' printed on its top surface. The PCB is populated with various other components, including diodes, transistors, and connectors. The layout is dense and organized, with components placed in a grid-like pattern. The PCB is mounted on a corkboard, and the components are clearly visible against the dark background of the board.



X1



