

Figure 1: Top Side With Cover Removed (Bottom Side of Main PCB)

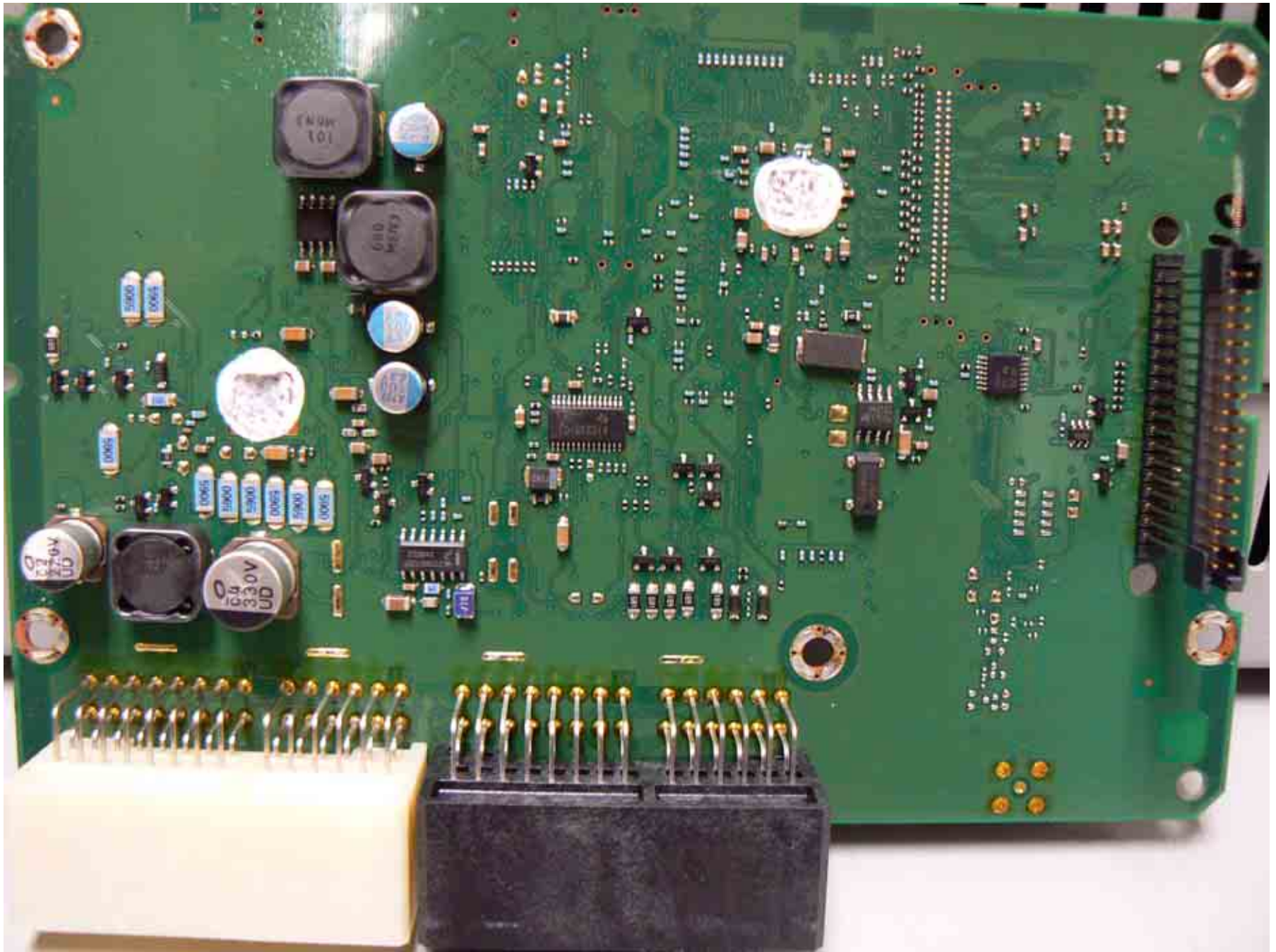


Figure 2: Main PCB Removed (Top Side)



Figure 3: Daughter Board Location in Chassis

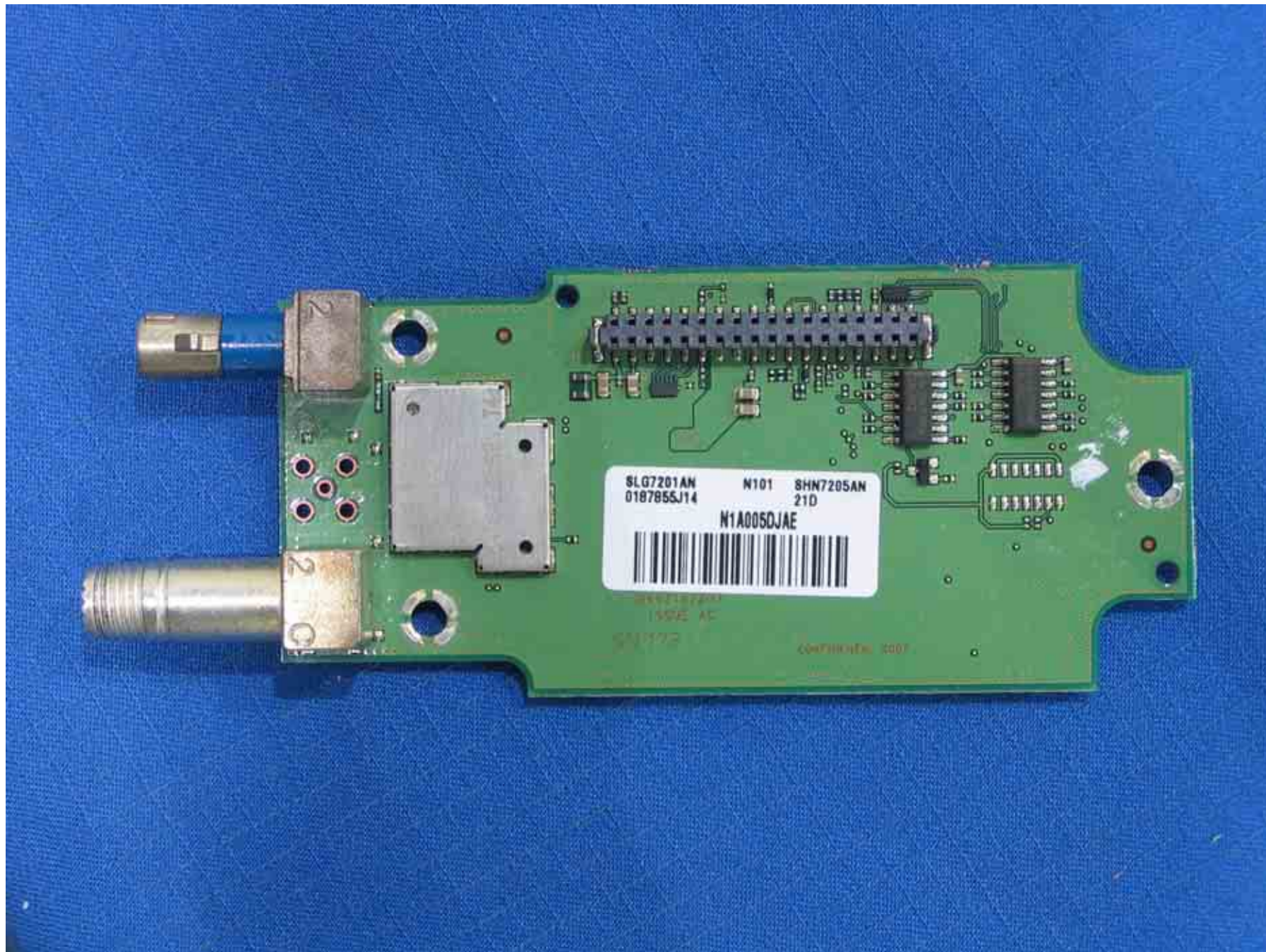


Figure 4: Daughter Board Top Side



Figure 5: Daughter Board Top Side With Shields Removed

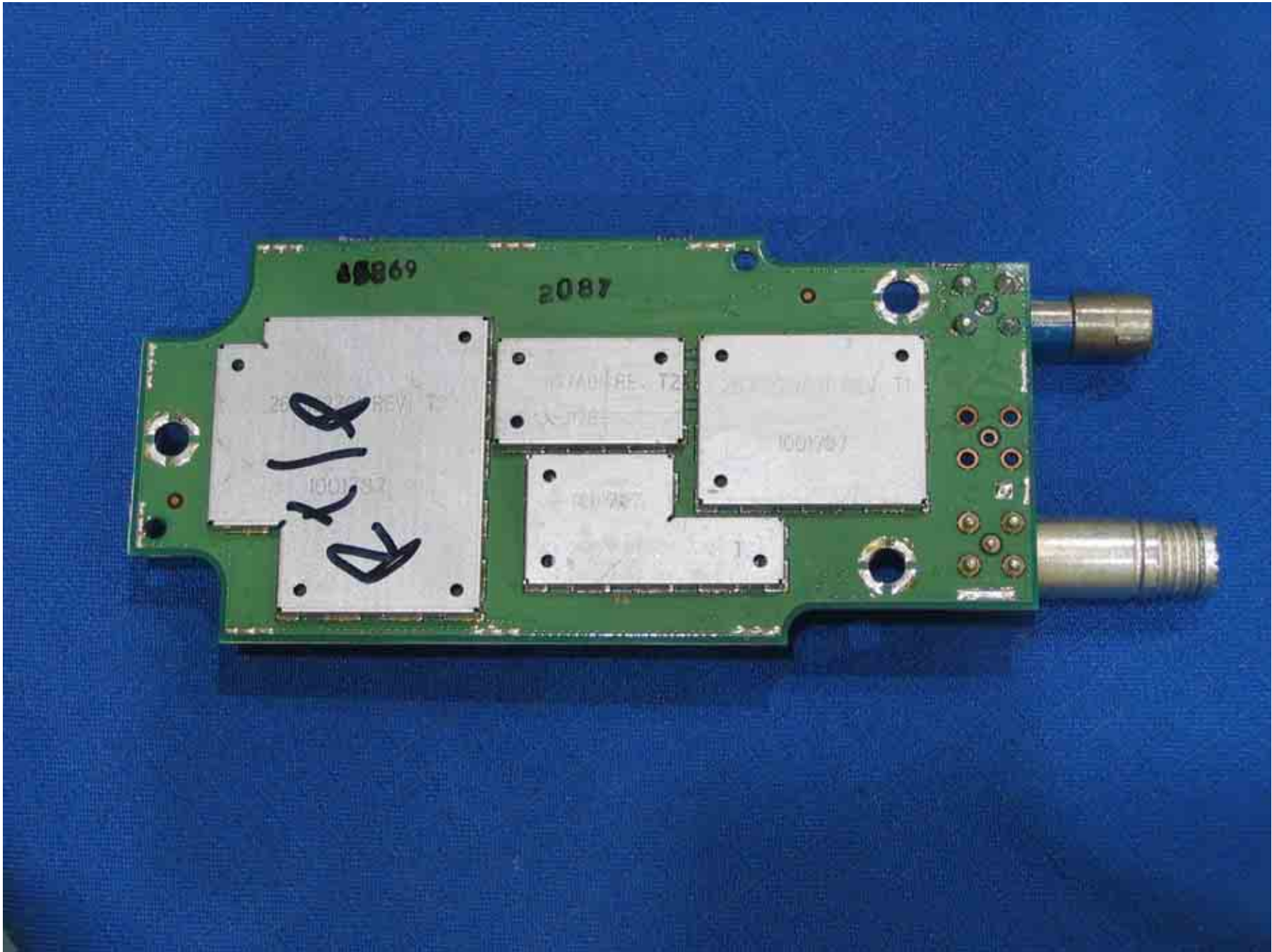


Figure 6: Daughter Board Bottom Side

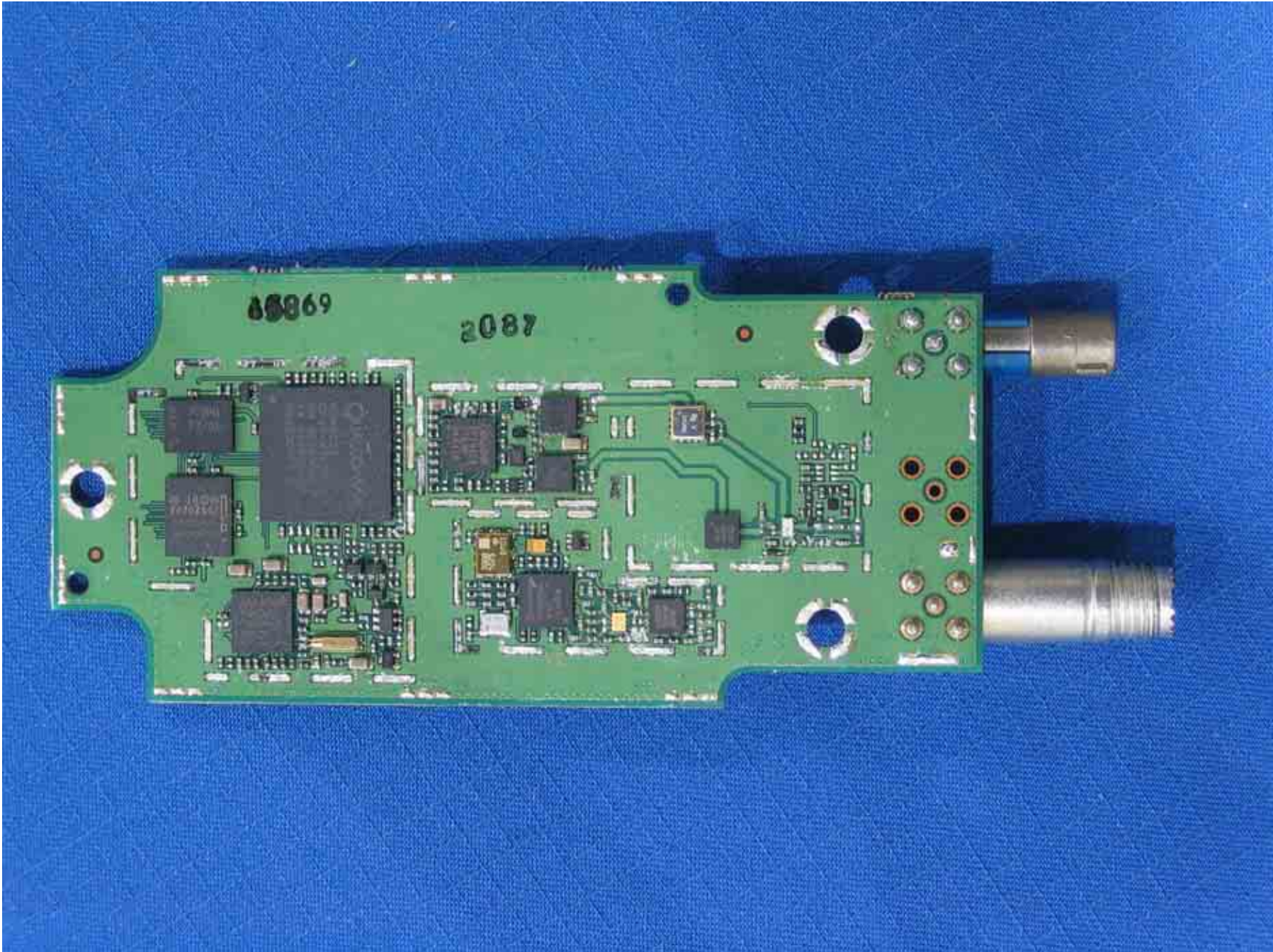


Figure 7: Daughter Board Bottom Side With Shields Removed