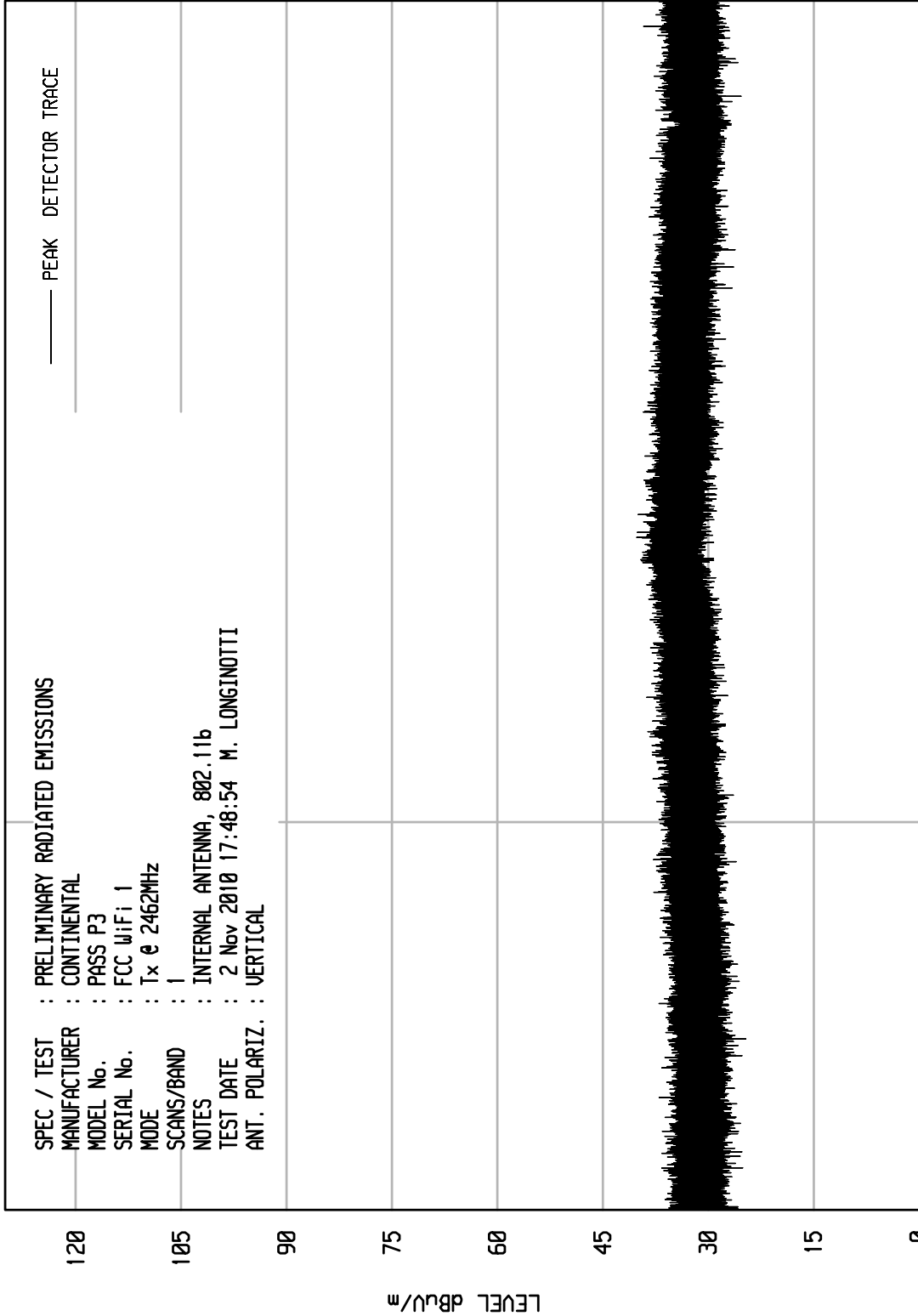


ELITE ELECTRONIC ENGINEERING Inc.

Downers Grove, Ill. 60515

UNIV RCU EMI RUN 11

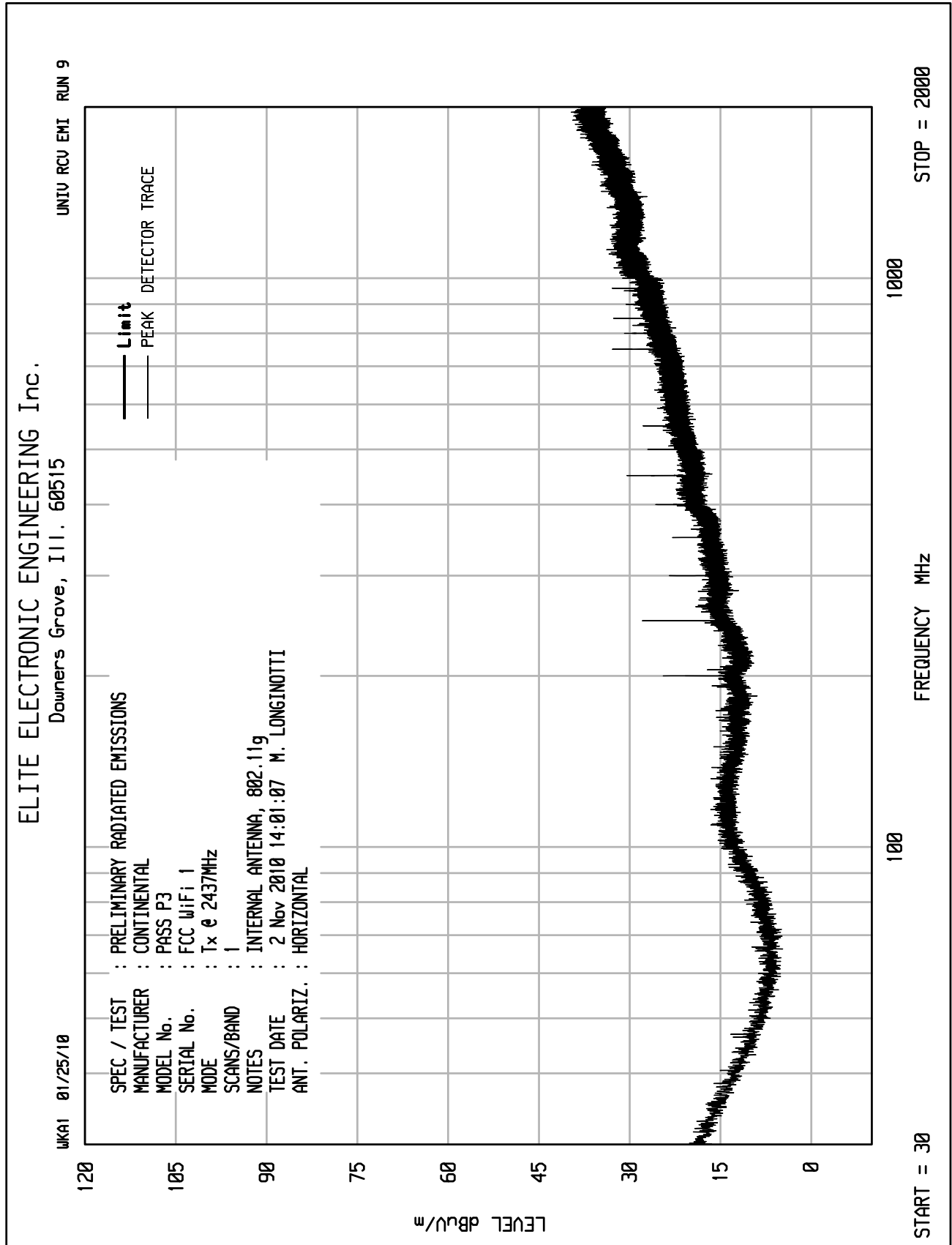
UKA1 07/14/10

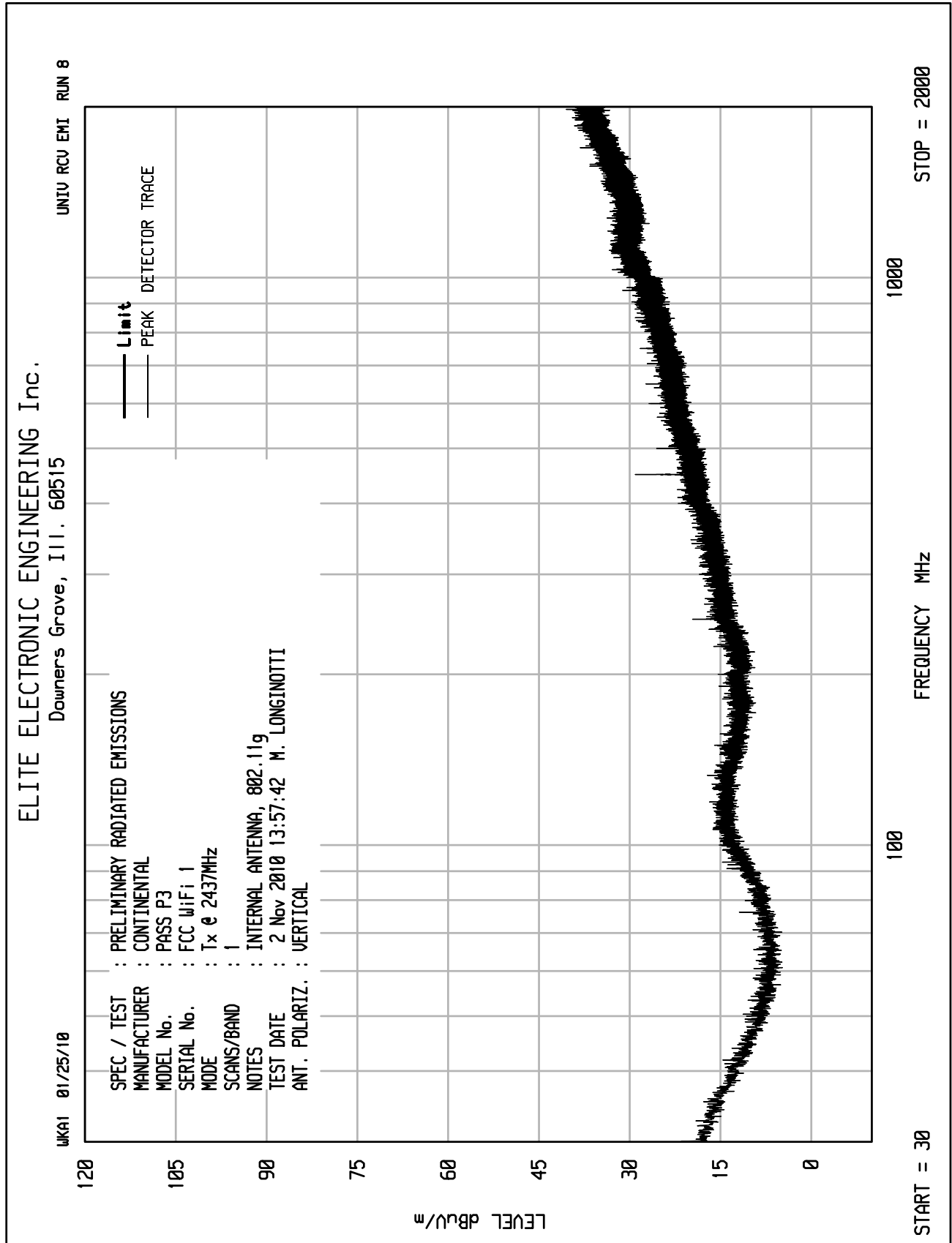


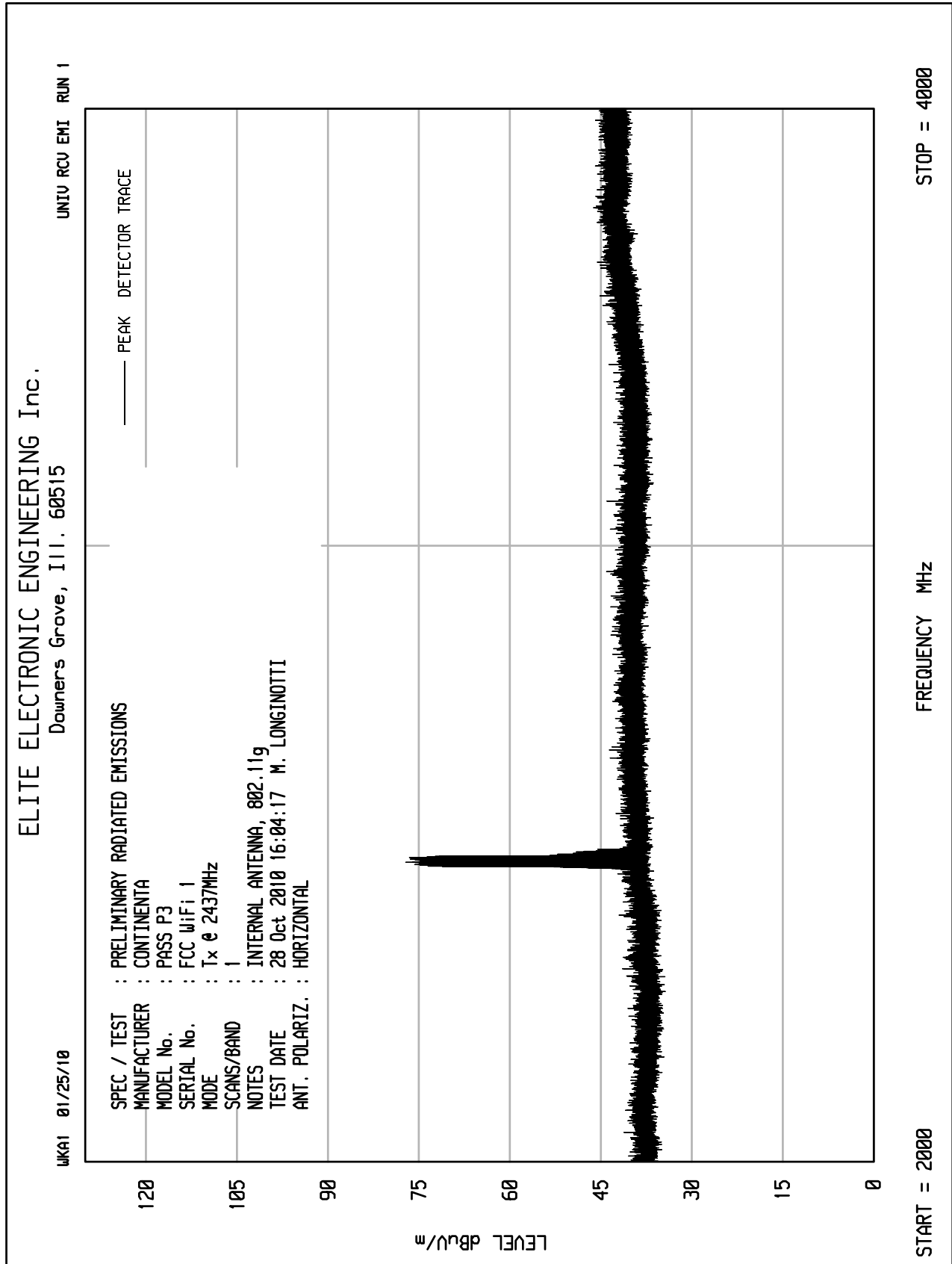
START = 18000

FREQUENCY MHz

STOP = 25000



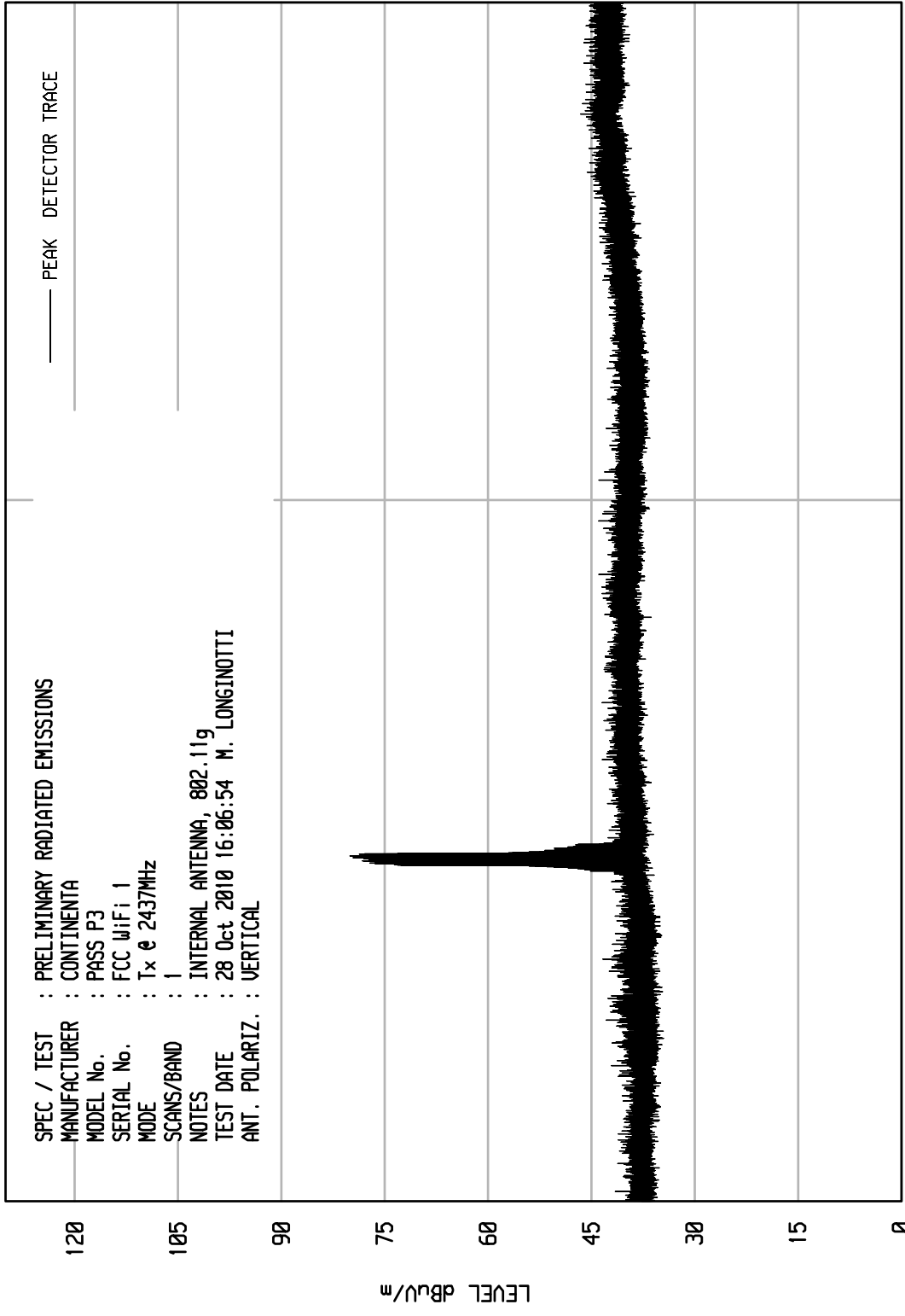




ELITE ELECTRONIC ENGINEERING Inc.
Downers Grove, Ill. 60515

UNITV RCU EMI RUN 2

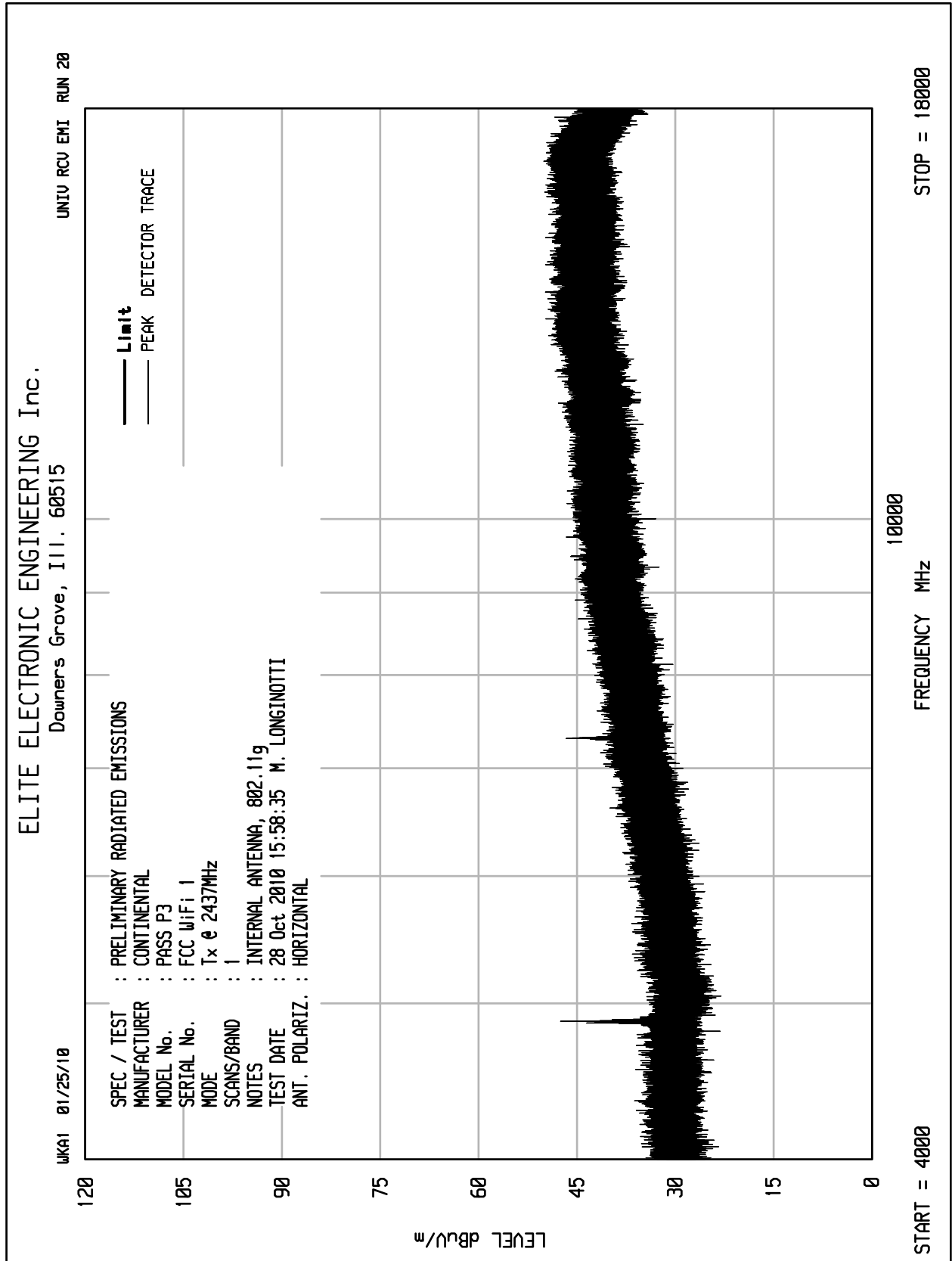
UKA1 01/25/10

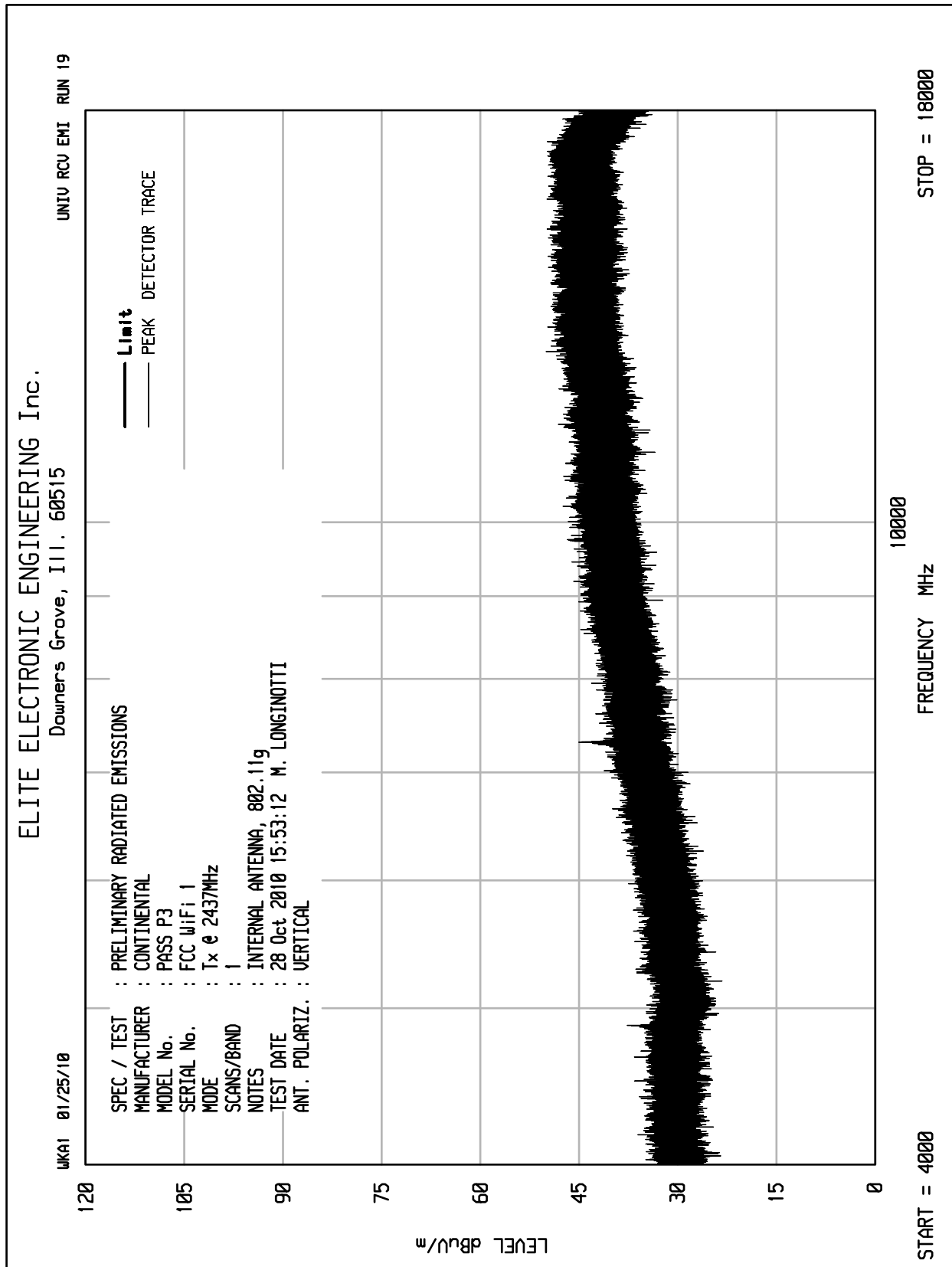


SPEC / TEST : PRELIMINARY RADIATED EMISSIONS
 MANUFACTURER : CONTINENTA
 MODEL No. : PASS P3
 SERIAL No. : FCC WiFi 1
 MODE : Tx @ 2437MHz
 SCANS/BAND : 1
 NOTES : INTERNAL ANTENNA, 802.11g
 TEST DATE : 28 Oct 2010 16:06:54 M. LONGINOTTI
 ANT. POLARIZ. : VERTICAL

START = 2000

STOP = 4000

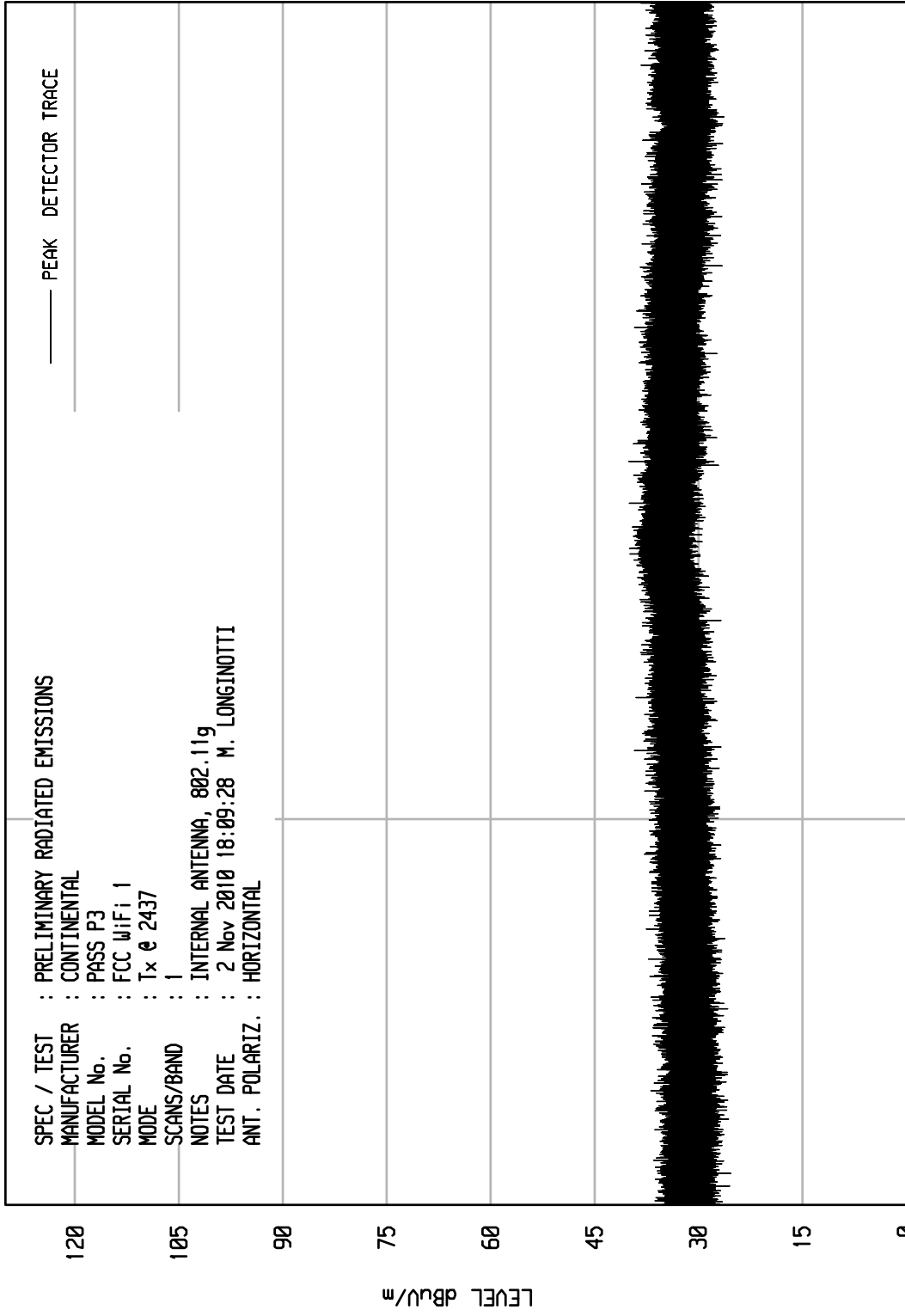




ELITE ELECTRONIC ENGINEERING Inc.
Downers Grove, Ill. 60515

UNITU RCU EMI RUN 14

WK91 07/14/10



START = 18000 FREQUENCY MHz STOP = 25000



Manufacturer : Continental Automotive
 Model No. : Pass 3
 Serial No. : FCC 1
 Specification : FCC-15.247 Spurious Radiated Emissions in Restricted Bands
 Date : October 25, 2010 through November 2, 2010
 Mode : Tx @ 2412MHz, External Antenna, 802.11b
 Equipment Used : RBB0, NWI0, NWI1, APW3, XPR0, SES1,NTA2, NHG0, APW0
 Notes : Test Distance is 3 meters
 Notes : Peak Readings in Restricted Bands

Freq (MHz)	Ant Pol	Meter Reading (dBuV)	Ambient	CBL Fac (dB)	Ant Fac (dB)	Pre Amp (dB)	Total dBuV/m at 3 M	Total uV/m at 3M	Limit uV/m at 3M	Margin (dB)
4824.000	H	59.3		5.7	34.8	-38.3	61.6	1199.3	5000.0	-12.4
4824.000	V	60.2		5.7	34.8	-38.3	62.5	1330.3	5000.0	-11.5
12060.00	H	47.4	Ambient	9.8	41.4	-38.4	60.2	1028.9	5000.0	-13.7
12060.00	V	47.4	Ambient	9.8	41.4	-38.4	60.2	1028.9	5000.0	-13.7
14472.00	H	48.0	Ambient	10.9	43.8	-38.9	63.8	1549.9	17431.6	-21.0
14472.00	V	47.9	Ambient	10.9	43.8	-38.9	63.7	1532.2	17431.6	-21.1
19296.00	H	32.7	Ambient	2.2	40.4	-27.4	47.9	247.7	5000.0	-26.1
19296.00	V	32.6	Ambient	2.2	40.4	-27.4	47.8	244.9	5000.0	-26.2

H – Horizontal

V – Vertical

$$\text{Total (dBuV/m)} = \text{Meter Reading (dBuV)} + \text{Cable Factor (dB)} + \text{Antenna Factor (dB)} + \text{Pre Amp (dB)}$$



Manufacturer : Continental Automotive
 Model No. : Pass 3
 Serial No. : FCC 1
 Specification : FCC-15.247 Spurious Radiated Emissions in Restricted Bands
 Date : October 25, 2010 through November 2, 2010
 Mode : Tx @ 2412MHz, External Antenna, 802.11b
 Equipment Used : RBB0, NWI0, NWI1, APW3, XPR0, SES1,NTA2, NHG0, APW0
 Notes : Test Distance is 3 meters
 Notes : Average Readings in Restricted Bands

Freq (MHz)	Ant Pol	Meter Reading (dBuV)	Ambient	CBL Fac (dB)	Ant Fac (dB)	Pre Amp (dB)	Duty Cycle (dB)*	Total dBuV/m at 3 M	Total uV/m at 3M	Limit uV/m at 3M	Margin (dB)
4824.0	H	41.0		5.7	34.8	-38.3	0.0	43.3	145.9	500.0	-10.7
4824.0	V	40.8		5.7	34.8	-38.3	0.0	43.1	142.5	500.0	-10.9
12060.0	H	33.9	Ambient	9.8	41.4	-38.4	0.0	46.7	217.5	500.0	-7.2
12060.0	V	33.9	Ambient	9.8	41.4	-38.4	0.0	46.7	217.5	500.0	-7.2
14472.0	H	35.3	Ambient	10.9	43.8	-38.9	0.0	51.1	359.2	500.0	-2.9
14472.0	V	25.6	Ambient	10.9	43.8	-38.9	0.0	41.4	117.6	500.0	-12.6
19296.0	H	20.2	Ambient	2.2	40.4	-27.4	0.0	35.4	58.7	500.0	-18.6
19296.0	V	20.1	Ambient	2.2	40.4	-27.4	0.0	35.3	58.1	500.0	-18.7

H – Horizontal

V – Vertical

* - No duty cycle correction factor was applied to the data because the EUT was not set up for continuous operation.

Total (dBuV/m) = Meter Reading (dBuV) + Cable Factor (dB) + Antenna Factor (dB) + Pre Amp (dB) + Duty Cycle (dB)



Manufacturer : Continental Automotive
 Model No. : Pass 3
 Serial No. : FCC 1
 Specification : FCC-15.247 Spurious Radiated Emissions in Restricted Bands
 Date : October 25, 2010 through November 2, 2010
 Mode : Tx @ 2437MHz, External Antenna, 802.11b
 Equipment Used : RBB0, NWI0, NWI1, APW3, XPR0, SES1,NTA2, NHG0, APW0
 Notes : Test Distance is 3 meters
 Notes : Peak Readings in Restricted Bands

Freq (MHz)	Ant Pol	Meter Reading (dBUV)	Ambient	CBL Fac (dB)	Ant Fac (dB)	Pre Amp (dB)	Total dBuV/m at 3 M	Total uV/m at 3M	Limit uV/m at 3M	Margin (dB)
4874.000	H	61.5		5.7	34.9	-38.3	63.8	1553.1	5000.0	-10.2
4874.000	V	58.4		5.7	34.9	-38.3	60.7	1086.9	5000.0	-13.3
7311.000	H	50.1		7.7	38.2	-38.4	57.5	751.0	5000.0	-16.5
7311.000	V	52.4		7.7	38.2	-38.4	59.8	978.7	5000.0	-14.2
12185.00	H	47.6		9.9	41.5	-38.4	60.5	1061.1	5000.0	-13.5
12185.00	V	47.6		9.9	41.5	-38.4	60.5	1061.1	5000.0	-13.5
19496.00	H	31.8	Ambient	2.2	40.4	-27.2	47.2	228.7	5000.0	-26.8
19496.00	V	32.7	Ambient	2.2	40.4	-27.2	48.1	253.7	5000.0	-25.9

H – Horizontal

V – Vertical

Total (dBuV/m) = Meter Reading (dBUV) + Cable Factor (dB) + Antenna Factor (dB) + Pre Amp (dB)



Manufacturer : Continental Automotive
 Model No. : Pass 3
 Serial No. : FCC 1
 Specification : FCC-15.247 Spurious Radiated Emissions in Restricted Bands
 Date : October 25, 2010 through November 2, 2010
 Mode : Tx @ 2437MHz, External Antenna, 802.11b
 Equipment Used : RBB0, NWI0, NWI1, APW3, XPR0, SES1, NTA2, NHG0, APW0
 Notes : Test Distance is 3 meters
 Notes : Average Readings in Restricted Bands

Freq (MHz)	Ant Pol	Meter Reading (dBuV)	CBL Fac (dB)	Ant Fac (dB)	Pre Amp (dB)	Duty Cycle (dB)*	Total dBuV/m at 3 M	Total uV/m at 3M	Limit uV/m at 3M	Margin (dB)
4874.0	H	42.5	5.7	34.9	-38.3	0.0	44.8	174.3	500.0	-9.2
4874.0	V	40.8	5.7	34.9	-38.3	0.0	43.1	143.3	500.0	-10.9
7311.0	H	35.8	7.7	38.2	-38.4	0.0	43.2	144.8	500.0	-10.8
7311.0	V	38.3	7.7	38.2	-38.4	0.0	45.7	193.0	500.0	-8.3
12185.0	H	34.3	9.9	41.5	-38.4	0.0	47.2	229.5	500.0	-6.8
12185.0	V	34.2	9.9	41.5	-38.4	0.0	47.1	226.9	500.0	-6.9
19496.0	H	20.3	2.2	40.4	-27.2	0.0	35.7	60.9	500.0	-18.3
19496.0	V	21.2	2.2	40.4	-27.2	0.0	36.6	67.5	500.0	-17.4

H – Horizontal

V – Vertical

* - No duty cycle correction factor was applied to the data because the EUT was not set up for continuous operation.

Total (dBuV/m) = Meter Reading (dBuV) + Cable Factor (dB) + Antenna Factor (dB) + Pre Amp (dB) + Duty Cycle (dB)



Manufacturer : Continental Automotive
 Model No. : Pass 3
 Serial No. : FCC 1
 Specification : FCC-15.247 Spurious Radiated Emissions in Restricted Bands
 Date : October 25, 2010 through November 2, 2010
 Mode : Tx @ 2462MHz, External Antenna, 802.11b
 Equipment Used : RBB0, NWI0, NWI1, APW3, XPR0, SES1,NTA2, NHG0, APW0
 Notes : Test Distance is 3 meters
 Notes : Peak Readings in Restricted Bands

Freq (MHz)	Ant Pol	Meter Reading (dBuV)	Ambient	CBL Fac (dB)	Ant Fac (dB)	Pre Amp (dB)	Total dBuV/m at 3 M	Total uV/m at 3M	Limit uV/m at 3M	Margin (dB)
4924.000	H	62.0		5.8	34.9	-38.3	64.4	1653.5	5000.0	-9.6
4924.000	V	60.5		5.8	34.9	-38.3	62.9	1391.3	5000.0	-11.1
7386.000	H	47.7		7.7	38.2	-38.5	55.1	571.7	5000.0	-18.8
7386.000	V	50.7		7.7	38.2	-38.5	58.1	807.5	5000.0	-15.8
12310.00	H	46.3	Ambient	9.9	41.5	-38.4	59.3	920.7	5000.0	-14.7
12310.00	V	46.2	Ambient	9.9	41.5	-38.4	59.2	910.2	5000.0	-14.8
19696.00	H	31.9	Ambient	2.2	40.4	-27.0	47.5	236.6	5000.0	-26.5
19696.00	V	31.8	Ambient	2.2	40.4	-27.0	47.4	233.9	5000.0	-26.6
22158.00	H	31.9	Ambient	2.2	40.6	-27.0	47.7	241.4	5000.0	-26.3
22158.00	V	32.6	Ambient	2.2	40.6	-27.0	48.4	261.7	5000.0	-25.6

H – Horizontal

V – Vertical

Total (dBuV/m) = Meter Reading (dBuV) + Cable Factor (dB) + Antenna Factor (dB) + Pre Amp (dB)



Manufacturer : Continental Automotive
 Model No. : Pass 3
 Serial No. : FCC 1
 Specification : FCC-15.247 Spurious Radiated Emissions in Restricted Bands
 Date : October 25, 2010 through November 2, 2010
 Mode : Tx @ 2462MHz, External Antenna, 802.11b
 Equipment Used : RBB0, NWI0, NWI1, APW3, XPR0, SES1,NTA2, NHG0, APW0
 Notes : Test Distance is 3 meters
 Notes : Average Readings in Restricted Bands

Freq (MHz)	Ant Pol	Meter Reading (dBuV)	CBL Fac (dB)	Ant Fac (dB)	Pre Amp (dB)	Duty Cycle (dB)*	Total dBuV/m at 3 M	Total uV/m at 3M	Limit uV/m at 3M	Margin (dB)
4924.0	H	44.2	5.8	34.9	-38.3	0.0	46.6	213.0	500.0	-7.4
4924.0	V	42.5	5.8	34.9	-38.3	0.0	44.9	175.2	500.0	-9.1
7386.0	H	33.7	7.7	38.2	-38.5	0.0	41.1	114.1	500.0	-12.8
7386.0	V	36.5	7.7	38.2	-38.5	0.0	43.9	157.5	500.0	-10.0
12310.0	H	33.3	9.9	41.5	-38.4	0.0	46.3	206.1	500.0	-7.7
12310.0	V	33.1	9.9	41.5	-38.4	0.0	46.1	201.4	500.0	-7.9
19696.0	H	20.3	2.2	40.4	-27.0	0.0	35.9	62.2	500.0	-18.1
19696.0	V	20.6	2.2	40.4	-27.0	0.0	36.2	64.4	500.0	-17.8
22158.0	H	20.9	2.2	40.6	-27.0	0.0	36.7	68.0	500.0	-17.3
22158.0	V	20.9	2.2	40.6	-27.0	0.0	36.7	68.0	500.0	-17.3

H – Horizontal

V – Vertical

* - No duty cycle correction factor was applied to the data because the EUT was not set up for continuous operation.

Total (dBuV/m) = Meter Reading (dBuV) + Cable Factor (dB) + Antenna Factor (dB) + Pre Amp (dB) + Duty Cycle (dB)



Manufacturer : Continental Automotive
 Model No. : Pass 3
 Serial No. : FCC 1
 Specification : FCC-15.247 Spurious Radiated Emissions in Restricted Bands
 Date : October 25, 2010 through November 2, 2010
 Mode : Tx @ 2462MHz, External Antenna, 802.11g
 Equipment Used : RBB0, NWI0, NWI1, APW3, XPR0, SES1,NTA2, NHG0, APW0
 Notes : Test Distance is 3 meters
 Notes : Peak Readings in Restricted Bands

Freq (MHz)	Ant Pol	Meter Reading (dBUV)	Ambient	CBL Fac (dB)	Ant Fac (dB)	Pre Amp (dB)	Total dBUV/m at 3 M	Total uV/m at 3M	Limit uV/m at 3M	Margin (dB)
4924.000	H	59.5		5.8	34.9	-38.3	61.9	1240.0	5000.0	-12.1
4924.000	V	60.4		5.8	34.9	-38.3	62.8	1375.3	5000.0	-11.2
7386.000	H	54.0		7.7	38.2	-38.5	61.4	1180.7	5000.0	-12.5
7386.000	V	55.6		7.7	38.2	-38.5	63.0	1419.5	5000.0	-10.9
12310.00	H	48.0	Ambient	9.9	41.5	-38.4	61.0	1119.7	5000.0	-13.0
12310.00	V	47.9	Ambient	9.9	41.5	-38.4	60.9	1106.9	5000.0	-13.1
19696.00	H	31.7	Ambient	2.2	40.4	-27.0	47.3	231.2	5000.0	-26.7
19696.00	V	32.5	Ambient	2.2	40.4	-27.0	48.1	253.5	5000.0	-25.9
22158.00	H	32.8	Ambient	2.2	40.6	-27.0	48.6	267.7	5000.0	-25.4
22158.00	V	32.8	Ambient	2.2	40.6	-27.0	48.6	267.7	5000.0	-25.4

H – Horizontal

V – Vertical

Total (dBUV/m) = Meter Reading (dBUV) + Cable Factor (dB) + Antenna Factor (dB) + Pre Amp (dB)



Manufacturer : Continental Automotive
 Model No. : Pass 3
 Serial No. : FCC 1
 Specification : FCC-15.247 Spurious Radiated Emissions in Restricted Bands
 Date : October 25, 2010 through November 2, 2010
 Mode : Tx @ 2462MHz, External Antenna, 802.11g
 Equipment Used : RBB0, NWI0, NWI1, APW3, XPR0, SES1,NTA2, NHG0, APW0
 Notes : Test Distance is 3 meters
 Notes : Average Readings in Restricted Bands

Freq (MHz)	Ant Pol	Meter Reading (dBuV)	CBL Fac (dB)	Ant Fac (dB)	Pre Amp (dB)	Duty Cycle (dB)*	Total dBuV/m at 3 M	Total uV/m at 3M	Limit uV/m at 3M	Margin (dB)
4924.0	H	35.8	5.8	34.9	-38.3	0.0	38.2	81.0	500.0	-15.8
4924.0	V	35.3	5.8	34.9	-38.3	0.0	37.7	76.5	500.0	-16.3
7386.0	H	35.1	7.7	38.2	-38.5	0.0	42.5	134.0	500.0	-11.4
7386.0	V	35.3	7.7	38.2	-38.5	0.0	42.7	137.1	500.0	-11.2
12310.0	H	35.1	9.9	41.5	-38.4	0.0	48.1	253.6	500.0	-5.9
12310.0	V	35.1	9.9	41.5	-38.4	0.0	48.1	253.6	500.0	-5.9
19696.0	H	20.3	2.2	40.4	-27.0	0.0	35.9	62.2	500.0	-18.1
19696.0	V	20.4	2.2	40.4	-27.0	0.0	36.0	62.9	500.0	-18.0
22158.0	H	20.8	2.2	40.6	-27.0	0.0	36.6	67.3	500.0	-17.4
22158.0	V	20.8	2.2	40.6	-27.0	0.0	36.6	67.3	500.0	-17.4

H – Horizontal

V – Vertical

* - No duty cycle correction factor was applied to the data because the EUT was not set up for continuous operation.

Total (dBuV/m) = Meter Reading (dBuV) + Cable Factor (dB) + Antenna Factor (dB) + Pre Amp (dB) + Duty Cycle (dB)



Manufacturer : Continental Automotive
 Model No. : Pass 3
 Serial No. : FCC 1
 Specification : FCC-15.247 Spurious Radiated Emissions
 Date : October 25, 2010 through November 2, 2010
 Mode : Tx @ 2412MHz, Internal Antenna, 802.11b
 Equipment Used : RBB0, NWI0, NWI1, APW3, XPR0, SES1,NTA2, NHG0, APW0
 Notes : Test Distance is 3 meters
 Notes : Peak Readings

Freq (MHz)	Ant Pol	Meter Reading (dBuV)	Ambient	CBL Fac (dB)	Ant Fac (dB)	Pre Amp (dB)	Total dBuV/m at 3 M	Total uV/m at 3M	Limit uV/m at 3M	Margin (dB)
2412.800	H	67.5		3.8	31.3	0.0	102.6	135329.5		
2412.800	V	65.6		3.8	31.3	0.0	100.7	108740.8		
4825.600	H	64.1		5.7	34.8	-38.3	66.4	2084.6	5000.0	-7.6
4825.600	V	64.2		5.7	34.8	-38.3	66.5	2108.7	5000.0	-7.5
7238.400	H	54.4		7.7	38.1	-38.4	61.8	1227.9	13533.0	-20.8
7238.400	V	52.0		7.7	38.1	-38.4	59.4	931.5	13533.0	-23.2
9651.200	H	57.0		8.6	39.7	-38.5	66.7	2169.8	13533.0	-15.9
9651.200	V	61.4		8.6	39.7	-38.5	71.1	3600.9	13533.0	-11.5
12064.00	H	47.6	Ambient	9.8	41.4	-38.4	60.4	1053.2	5000.0	-13.5
12064.00	V	50.9	Ambient	9.8	41.4	-38.4	63.7	1539.9	5000.0	-10.2
14476.80	H	38.1	Ambient	10.9	43.8	-38.9	53.9	496.4	13533.0	-28.7
14476.80	V	42.2	Ambient	10.9	43.8	-38.9	58.0	795.9	13533.0	-24.6
16889.60	H	37.1	Ambient	11.7	44.7	-38.4	55.1	566.6	13533.0	-27.6
16889.60	V	37.1	Ambient	11.7	44.7	-38.4	55.1	566.6	13533.0	-27.6
19302.40	H	32.0	Ambient	2.2	40.4	-27.4	47.2	228.7	5000.0	-26.8
19302.40	V	32.0	Ambient	2.2	40.4	-27.4	47.2	228.7	5000.0	-26.8
21715.20	H	24.0	Ambient	2.2	40.6	-26.4	40.4	104.6	13533.0	-42.2
21715.20	V	23.1	Ambient	2.2	40.6	-26.4	39.5	94.3	13533.0	-43.1
24128.00	H	21.6	Ambient	2.2	40.6	-27.4	37.0	71.1	13533.0	-45.6
24128.00	V	22.0	Ambient	2.2	40.6	-27.4	37.4	74.4	13533.0	-45.2
265.98*	H	29.2		1.4	13.3	0.0	43.9	156.7	200.0	-2.1
399.90*	H	21.5		1.5	17.0	0.0	40.0	100.0	200.0	-6.0

H – Horizontal

V – Vertical

Total (dBuV/m) = Meter Reading (dBuV) + Cable Factor (dB) + Antenna Factor (dB) + Pre Amp (dB)

Gray rows indicate radiated emissions in a restricted band

* - Measurements were taken with a quasi-peak detector



Manufacturer : Continental Automotive
 Model No. : Pass 3
 Serial No. : FCC 1
 Specification : FCC-15.247 Spurious Radiated Emissions
 Date : October 25, 2010 through November 2, 2010
 Mode : Tx @ 2412MHz, Internal Antenna, 802.11g
 Equipment Used : RBB0, NWI0, NWI1, APW3, XPR0, SES1,NTA2, NHG0, APW0
 Notes : Test Distance is 3 meters
 Notes : Average Readings in Restricted Bands

Freq (MHz)	Ant Pol	Meter Reading (dBuV)	Ambient	CBL Fac (dB)	Ant Fac (dB)	Pre Amp (dB)	Duty Cycle (dB)*	Total dBuV/m at 3 M	Total uV/m at 3M	Limit uV/m at 3M	Margin (dB)
4825.6	H	45.5		5.7	34.8	-38.3	0.0	47.8	244.9	500.0	-6.2
4825.6	V	45.1		5.7	34.8	-38.3	0.0	47.4	233.9	500.0	-6.6
12064.0	H	33.8	Ambient	9.8	41.4	-38.4	0.0	46.6	215.0	500.0	-7.3
12064.0	V	35.4	Ambient	9.8	41.4	-38.4	0.0	48.2	258.5	500.0	-5.7
19302.4	H	20.1	Ambient	2.2	40.4	-27.4	0.0	35.3	58.1	500.0	-18.7
19302.4	V	20.3	Ambient	2.2	40.4	-27.4	0.0	35.5	59.5	500.0	-18.5

H – Horizontal

V – Vertical

* - No duty cycle correction factor was applied to the data because the EUT was not set up for continuous operation.

Total (dBuV/m) = Meter Reading (dBuV) + Cable Factor (dB) + Antenna Factor (dB) + Pre Amp (dB) + Duty Cycle (dB)



Manufacturer : Continental Automotive
 Model No. : Pass 3
 Serial No. : FCC 1
 Specification : FCC-15.247 Spurious Radiated Emissions
 Date : October 25, 2010 through November 2, 2010
 Mode : Tx @ 2437MHz, Internal Antenna, 802.11b
 Equipment Used : RBB0, NWI0, NWI1, APW3, XPR0, SES1,NTA2, NHG0, APW0
 Notes : Test Distance is 3 meters
 Notes : Peak Readings

Freq (MHz)	Ant Pol	Meter Reading (dBuV)	Ambient	CBL Fac (dB)	Ant Fac (dB)	Pre Amp (dB)	Total dBuV/m at 3 M	Total uV/m at 3M	Limit uV/m at 3M	Margin (dB)
2437.000	H	64.6		3.8	31.3	0.0	99.8	97279.7		
2437.000	V	66.4		3.8	31.3	0.0	101.6	119680.2		
4874.000	H	65.1		5.7	34.9	-38.3	67.4	2350.6	5000.0	-6.6
4874.000	V	64.7		5.7	34.9	-38.3	67.0	2244.9	5000.0	-7.0
7311.000	H	60.4		7.7	38.2	-38.4	67.8	2458.4	5000.0	-6.2
7311.000	V	63.0		7.7	38.2	-38.4	70.4	3316.2	5000.0	-3.6
9748.000	H	58.7		8.6	39.8	-38.6	68.5	2653.6	11968.0	-13.1
9748.000	V	59.1		8.6	39.8	-38.6	68.9	2778.6	11968.0	-12.7
12185.00	H	53.6		9.9	41.5	-38.4	66.5	2117.2	5000.0	-7.5
12185.00	V	51.7		9.9	41.5	-38.4	64.6	1701.2	5000.0	-9.4
14622.00	H	37.6	Ambient	11.0	44.1	-38.9	53.8	487.2	11968.0	-27.8
14622.00	V	39.5	Ambient	11.0	44.1	-38.9	55.7	606.4	11968.0	-25.9
17059.00	H	37.2	Ambient	11.7	44.7	-38.4	55.2	575.6	11968.0	-26.4
17059.00	V	37.5	Ambient	11.7	44.7	-38.4	55.5	595.8	11968.0	-26.1
19496.00	H	32.2	Ambient	2.2	40.4	-27.2	47.6	239.5	5000.0	-26.4
19496.00	V	32.7	Ambient	2.2	40.4	-27.2	48.1	253.7	5000.0	-25.9
21933.00	H	23.6	Ambient	2.2	40.6	-26.9	39.5	94.7	11968.0	-42.0
21933.00	V	23.5	Ambient	2.2	40.6	-26.9	39.4	93.6	11968.0	-42.1
24370.00	H	23.0	Ambient	2.2	40.6	-27.5	38.4	83.1	11968.0	-43.2
24370.00	V	22.5	Ambient	2.2	40.6	-27.5	37.9	78.5	11968.0	-43.7

H – Horizontal

V – Vertical

Total (dBuV/m) = Meter Reading (dBuV) + Cable Factor (dB) + Antenna Factor (dB) + Pre Amp (dB)

Gray rows indicate radiated emissions in a restricted band



Manufacturer : Continental Automotive
 Model No. : Pass 3
 Serial No. : FCC 1
 Specification : FCC-15.247 Spurious Radiated Emissions
 Date : October 25, 2010 through November 2, 2010
 Mode : Tx @ 2437MHz, Internal Antenna, 802.11b
 Equipment Used : RBB0, NWI0, NWI1, APW3, XPR0, SES1,NTA2, NHG0, APW0
 Notes : Test Distance is 3 meters
 Notes : Average Readings in Restricted Bands

Freq (MHz)	Ant Pol	Meter Reading (dBuV)	Ambient	CBL Fac (dB)	Ant Fac (dB)	Pre Amp (dB)	Duty Cycle (dB)*	Total dBuV/m at 3 M	Total uV/m at 3M	Limit uV/m at 3M	Margin (dB)
4874.0	H	36.8		5.7	34.9	-38.3	0.0	39.1	90.4	500.0	-14.9
4874.0	V	47.9		5.7	34.9	-38.3	0.0	50.2	324.5	500.0	-3.8
7311.0	H	43.3		7.7	38.2	-38.4	0.0	50.7	343.3	500.0	-3.3
7311.0	V	45.0		7.7	38.2	-38.4	0.0	52.4	417.5	500.0	-1.6
12185.0	H	38.1	Ambient	9.9	41.5	-38.4	0.0	51.0	355.4	500.0	-3.0
12185.0	V	38.6	Ambient	9.9	41.5	-38.4	0.0	51.5	376.5	500.0	-2.5
19496.0	H	20.3	Ambient	2.2	40.4	-27.2	0.0	35.7	60.9	500.0	-18.3
19496.0	V	21.2	Ambient	2.2	40.4	-27.2	0.0	36.6	67.5	500.0	-17.4

H – Horizontal

V – Vertical

* - No duty cycle correction factor was applied to the data because the EUT was not set up for continuous operation.

Total (dBuV/m) = Meter Reading (dBuV) + Cable Factor (dB) + Antenna Factor (dB) + Pre Amp (dB) + Duty Cycle (dB)



Manufacturer : Continental Automotive
 Model No. : Pass 3
 Serial No. : FCC 1
 Specification : FCC-15.247 Spurious Radiated Emissions
 Date : October 25, 2010 through November 2, 2010
 Mode : Tx @ 2462MHz, Internal Antenna, 802.11b
 Equipment Used : RBB0, NWI0, NWI1, APW3, XPR0, SES1,NTA2, NHG0, APW0
 Notes : Test Distance is 3 meters
 Notes : Peak Readings

Freq (MHz)	Ant Pol	Meter Reading (dBuV)	Ambient	CBL Fac (dB)	Ant Fac (dB)	Pre Amp (dB)	Total dBuV/m at 3 M	Total uV/m at 3M	Limit uV/m at 3M	Margin (dB)
2462.000	H	65.1		3.8	31.4	0.0	100.3	103440.1		
2462.000	V	63.7		3.8	31.4	0.0	98.9	88041.8		
4924.000	H	64.3		5.8	34.9	-38.3	66.7	2154.8	5000.0	-7.3
4924.000	V	62.7		5.8	34.9	-38.3	65.1	1792.3	5000.0	-8.9
7386.000	H	57.8		7.7	38.2	-38.5	65.2	1828.7	5000.0	-8.7
7386.000	V	58.1		7.7	38.2	-38.5	65.5	1893.0	5000.0	-8.4
9848.000	H	55.4		8.5	39.9	-38.6	65.2	1825.1	10344.0	-15.1
9848.000	V	59.5		8.5	39.9	-38.6	69.3	2926.1	10344.0	-11.0
12310.00	H	47.9	Ambient	9.9	41.5	-38.4	60.9	1106.9	5000.0	-13.1
12310.00	V	48.0	Ambient	9.9	41.5	-38.4	61.0	1119.7	5000.0	-13.0
14772.00	H	36.2	Ambient	11.1	44.4	-39.0	52.7	431.7	10344.0	-27.6
14772.00	V	36.7	Ambient	11.1	44.4	-39.0	53.2	457.3	10344.0	-27.1
17234.00	H	36.8	Ambient	11.8	44.7	-38.4	54.9	554.7	10344.0	-25.4
17234.00	V	37.5	Ambient	11.8	44.7	-38.4	55.6	601.3	10344.0	-24.7
19696.00	H	32.4	Ambient	2.2	40.4	-27.0	48.0	250.6	5000.0	-26.0
19696.00	V	32.9	Ambient	2.2	40.4	-27.0	48.5	265.4	5000.0	-25.5
22158.00	H	32.0	Ambient	2.2	40.6	-27.0	47.8	244.2	5000.0	-26.2
22158.00	V	32.3	Ambient	2.2	40.6	-27.0	48.1	252.8	5000.0	-25.9
24620.00	H	21.8	Ambient	2.2	40.7	-27.4	37.3	73.2	10344.0	-43.0
24620.00	V	21.8	Ambient	2.2	40.7	-27.4	37.3	73.2	10344.0	-43.0

H – Horizontal

V – Vertical

Total (dBuV/m) = Meter Reading (dBuV) + Cable Factor (dB) + Antenna Factor (dB) + Pre Amp (dB)

Gray rows indicate radiated emissions in a restricted band



Manufacturer : Continental Automotive
 Model No. : Pass 3
 Serial No. : FCC 1
 Specification : FCC-15.247 Spurious Radiated Emissions
 Date : October 25, 2010 through November 2, 2010
 Mode : Tx @ 2462MHz, Internal Antenna, 802.11b
 Equipment Used : RBB0, NWI0, NWI1, APW3, XPR0, SES1,NTA2, NHG0, APW0
 Notes : Test Distance is 3 meters
 Notes : Average Readings in Restricted Bands

Freq (MHz)	Ant Pol	Meter Reading (dBUV)	CBL Fac (dB)	Ant Fac (dB)	Pre Amp (dB)	Duty Cycle (dB)*	Total dBUV/m at 3 M	Total uV/m at 3M	Limit uV/m at 3M	Margin (dB)
4924.0	H	46.0	5.8	34.9	-38.3	0.0	48.4	262.1	500.0	-5.6
4924.0	V	45.0	5.8	34.9	-38.3	0.0	47.4	233.6	500.0	-6.6
7386.0	H	42.7	7.7	38.2	-38.5	0.0	50.1	321.5	500.0	-3.8
7386.0	V	43.2	7.7	38.2	-38.5	0.0	50.6	340.5	500.0	-3.3
12310.0	H	35.0	9.9	41.5	-38.4	0.0	48.0	250.7	500.0	-6.0
12310.0	V	35.1	9.9	41.5	-38.4	0.0	48.1	253.6	500.0	-5.9
19696.0	H	20.6	2.2	40.4	-27.0	0.0	36.2	64.4	500.0	-17.8
19696.0	V	20.6	2.2	40.4	-27.0	0.0	36.2	64.4	500.0	-17.8
22158.0	H	20.9	2.2	40.6	-27.0	0.0	36.7	68.0	500.0	-17.3
22158.0	V	20.8	2.2	40.6	-27.0	0.0	36.6	67.3	500.0	-17.4

H – Horizontal

V – Vertical

* - No duty cycle correction factor was applied to the data because the EUT was not set up for continuous operation.

Total (dBUV/m) = Meter Reading (dBUV) + Cable Factor (dB) + Antenna Factor (dB) + Pre Amp (dB) + Duty Cycle (dB)



Manufacturer : Continental Automotive
 Model No. : Pass 3
 Serial No. : FCC 1
 Specification : FCC-15.247 Spurious Radiated Emissions
 Date : October 25, 2010 through November 2, 2010
 Mode : Tx @ 2437MHz, Internal Antenna, 802.11g
 Equipment Used : RBB0, NWI0, NWI1, APW3, XPR0, SES1,NTA2, NHG0, APW0
 Notes : Test Distance is 3 meters
 Notes : Peak Readings

Freq (MHz)	Ant Pol	Meter Reading (dBuV)	Ambient	CBL Fac (dB)	Ant Fac (dB)	Pre Amp (dB)	Total dBuV/m at 3 M	Total uV/m at 3M	Limit uV/m at 3M	Margin (dB)
2437.000	H	60.2		3.8	31.3	0.0	95.4	58616.8		
2437.000	V	60.4		3.8	31.3	0.0	95.6	59982.2		
4874.000	H	62.6		5.7	34.9	-38.3	64.9	1762.7	5000.0	-9.1
4874.000	V	63.3		5.7	34.9	-38.3	65.6	1910.7	5000.0	-8.4
7311.000	H	62.0		7.7	38.2	-38.4	69.4	2955.6	5000.0	-4.6
7311.000	V	65.7		7.7	38.2	-38.4	73.1	4525.3	5000.0	-0.9
9748.000	H	41.8		8.6	39.8	-38.6	51.6	379.2	5998.2	-24.0
9748.000	V	44.2		8.6	39.8	-38.6	54.0	499.8	5998.2	-21.6
12185.00	H	48.2	Ambient	9.9	41.5	-38.4	61.1	1137.0	5000.0	-12.9
12185.00	V	49.6	Ambient	9.9	41.5	-38.4	62.5	1335.9	5000.0	-11.5
14622.00	H	38.0	Ambient	11.0	44.1	-38.9	54.2	510.2	5998.2	-21.4
14622.00	V	37.9	Ambient	11.0	44.1	-38.9	54.1	504.3	5998.2	-21.5
17059.00	H	37.4	Ambient	11.7	44.7	-38.4	55.4	589.0	5998.2	-20.2
17059.00	V	37.8	Ambient	11.7	44.7	-38.4	55.8	616.7	5998.2	-19.8
19496.00	H	31.3	Ambient	2.2	40.4	-27.2	46.7	215.9	5000.0	-27.3
19496.00	V	31.9	Ambient	2.2	40.4	-27.2	47.3	231.4	5000.0	-26.7
21933.00	H	23.5	Ambient	2.2	40.6	-26.9	39.4	93.6	5998.2	-36.1
21933.00	V	23.7	Ambient	2.2	40.6	-26.9	39.6	95.8	5998.2	-35.9
24370.00	H	23.1	Ambient	2.2	40.6	-27.5	38.5	84.1	5998.2	-37.1
24370.00	V	22.5	Ambient	2.2	40.6	-27.5	37.9	78.5	5998.2	-37.7

H – Horizontal

V – Vertical

Total (dBuV/m) = Meter Reading (dBuV) + Cable Factor (dB) + Antenna Factor (dB) + Pre Amp (dB)

Gray rows indicate radiated emissions in a restricted band



Manufacturer : Continental Automotive
 Model No. : Pass 3
 Serial No. : FCC 1
 Specification : FCC-15.247 Spurious Radiated Emissions
 Date : October 25, 2010 through November 2, 2010
 Mode : Tx @ 2437MHz, Internal Antenna, 802.11g
 Equipment Used : RBB0, NWI0, NWI1, APW3, XPR0, SES1,NTA2, NHG0, APW0
 Notes : Test Distance is 3 meters
 Notes : Average Readings in Restricted Bands

Freq (MHz)	Ant Pol	Meter Reading (dBuV)	CBL Fac (dB)	Ant Fac (dB)	Pre Amp (dB)	Duty Cycle (dB)*	Total dBuV/m at 3 M	Total uV/m at 3M	Limit uV/m at 3M	Margin (dB)	
4874.0	H	36.0		5.7	34.9	-38.3	0.0	38.3	82.4	500.0	-15.7
4874.0	V	36.7		5.7	34.9	-38.3	0.0	39.0	89.4	500.0	-15.0
7311.0	H	37.7		7.7	38.2	-38.4	0.0	45.1	180.2	500.0	-8.9
7311.0	V	37.6		7.7	38.2	-38.4	0.0	45.0	178.1	500.0	-9.0
12185.0	H	34.9	Ambient	9.9	41.5	-38.4	0.0	47.8	245.9	500.0	-6.2
12185.0	V	34.8	Ambient	9.9	41.5	-38.4	0.0	47.7	243.1	500.0	-6.3
19496.0	H	20.3	Ambient	2.2	40.4	-27.2	0.0	35.7	60.9	500.0	-18.3
19496.0	V	20.3	Ambient	2.2	40.4	-27.2	0.0	35.7	60.9	500.0	-18.3

H – Horizontal

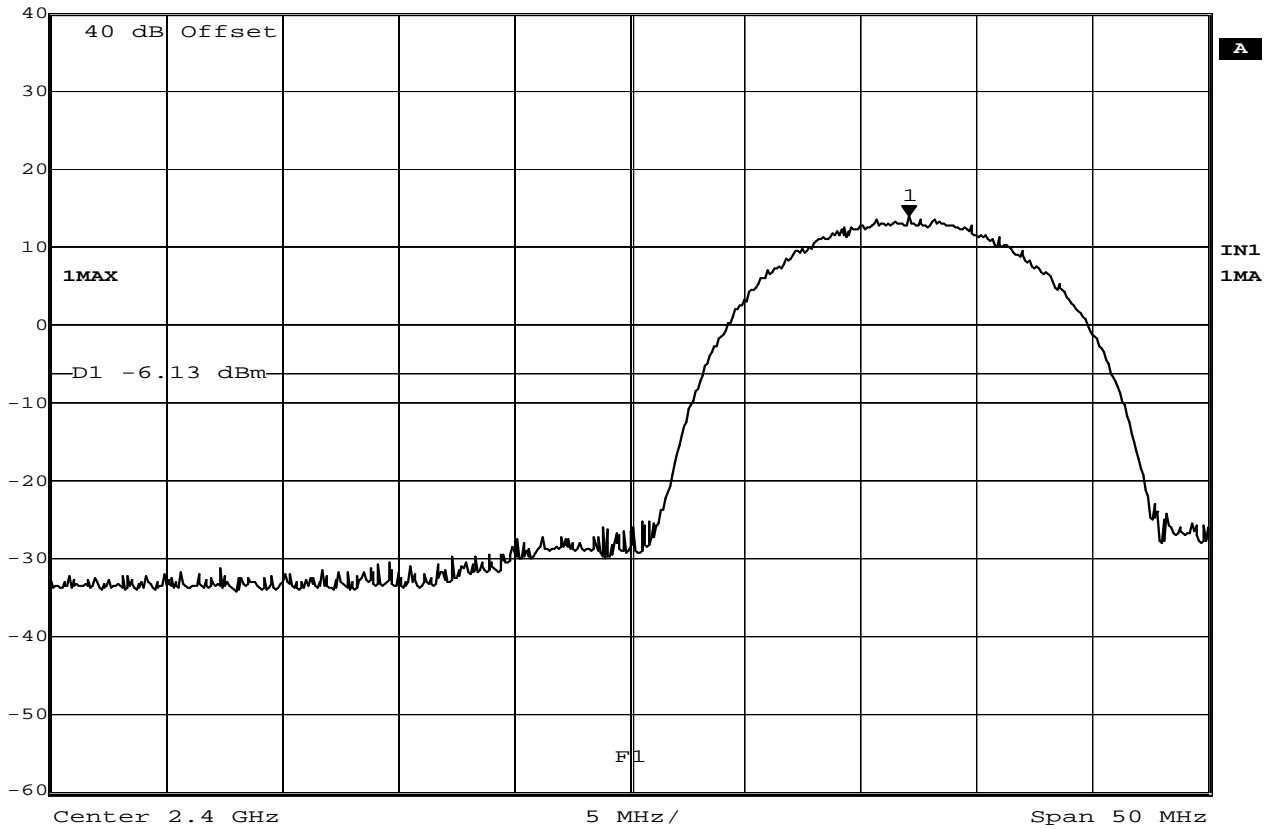
V – Vertical

* - No duty cycle correction factor was applied to the data because the EUT was not set up for continuous operation.

Total (dBuV/m) = Meter Reading (dBuV) + Cable Factor (dB) + Antenna Factor (dB) + Pre Amp (dB) + Duty Cycle (dB)



Marker 1 [T1] RBW 500 kHz RF Att 10 dB
 Ref Lvl 13.87 dBm VBW 5 MHz
 40 dBm 2.41207415 GHz SWT 5 ms Unit dBm



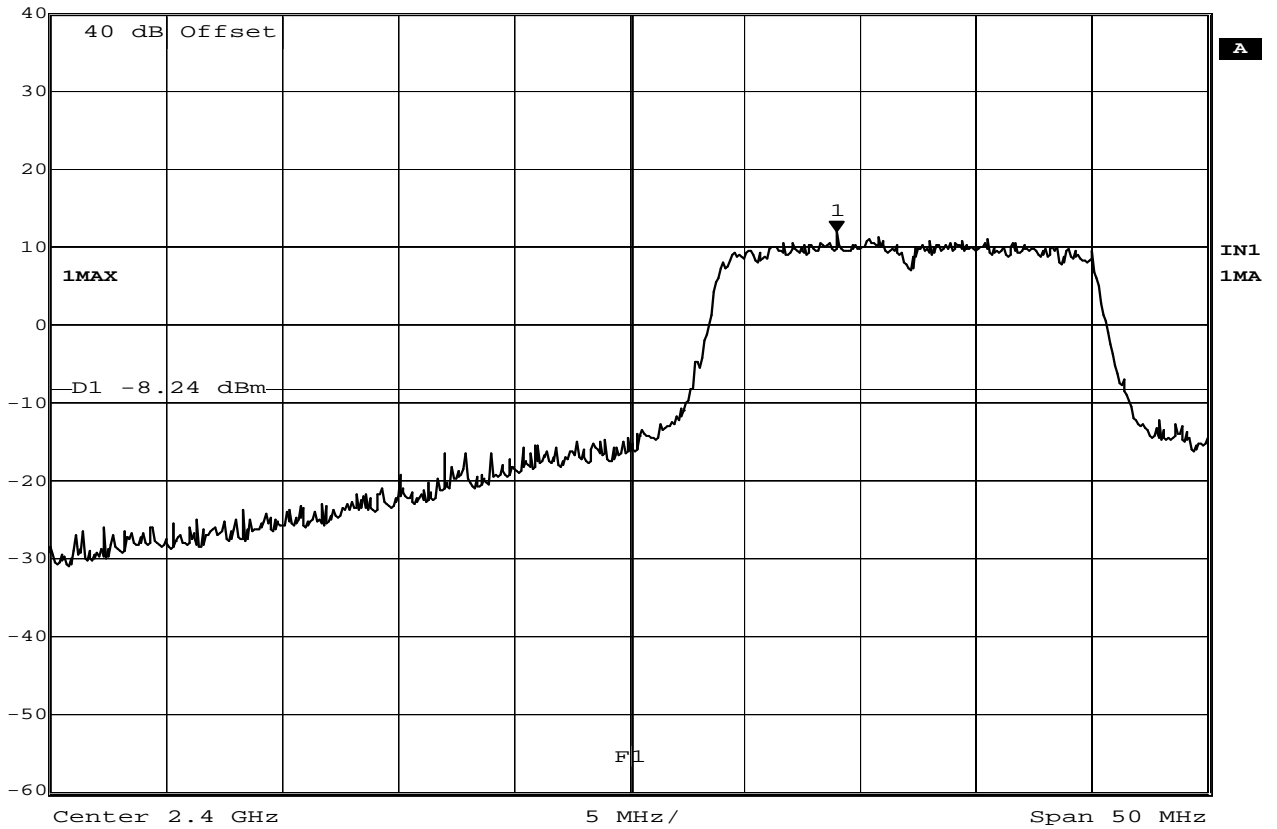
Date: 29.OCT.2010 09:49:00

FCC 15.247 Band Edge Compliance

MANUFACTURER : Continental Automotive
 MODEL NUMBER : Pass P3
 SERIAL NUMBER : FCC WiFi 1
 TEST MODE : Tx @ 2412MHz, 802.11 b, 11Mbps, 2048bytes payload
 NOTES : Antenna Conducted
 TEST DATE : October 29, 2010
 TEST PARAMETERS : Antenna Conducted Emissions
 NOTES : Display Line D1 Represents the level that is 20dB below the highest level in the
 : band. Display Line F1 represents the band edge (2400MHz).
 EQUIPMENT USED : RBA0, T2D2, T2S7



Marker 1 [T1] RBW 500 kHz RF Att 10 dB
 Ref Lvl 11.76 dBm VBW 5 MHz
 40 dBm 2.40896794 GHz SWT 5 ms Unit dBm



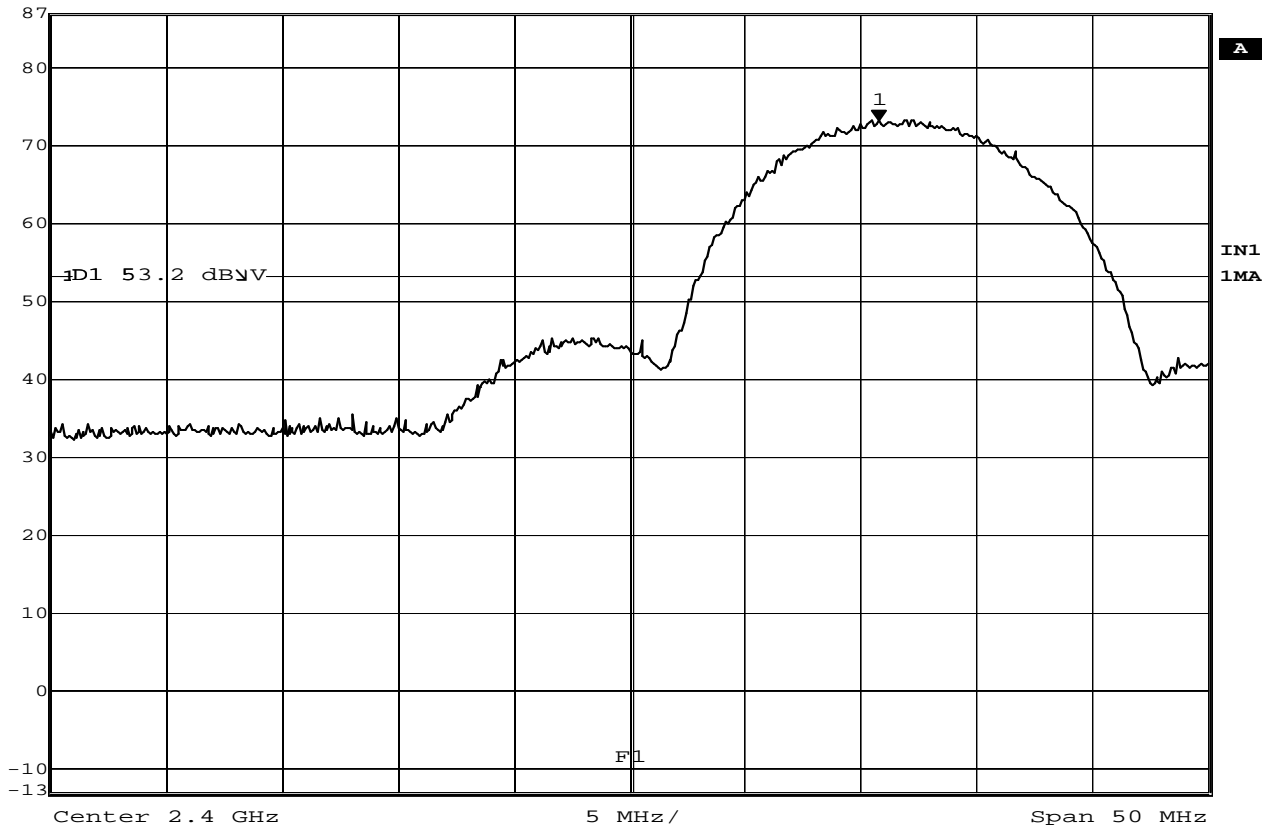
Date: 29.OCT.2010 09:42:16

FCC 15.247Band Edge Compliance

MANUFACTURER : Continental Automotive
 MODEL NUMBER : Pass P3
 SERIAL NUMBER : FCC WiFi 1
 TEST MODE : Tx @ 2412MHz, 802.11 g, 54Mbps, 2048bytes payload
 NOTES : Antenna Conducted
 TEST DATE : October 29, 2010
 TEST PARAMETERS : Band Edge Compliance
 NOTES : Display Line D1 represents the level that is 20dB below the highest level in the band. Display Line F1 represents the band edge 2400MHz.
 EQUIPMENT USED : RBA0, T2D2, T2S7



Marker 1 [T1] RBW 500 kHz RF Att 10 dB
 Ref Lvl 73.20 dBµV VBW 5 MHz
 87 dBµV 2.41077154 GHz SWT 5 ms Unit dBµV



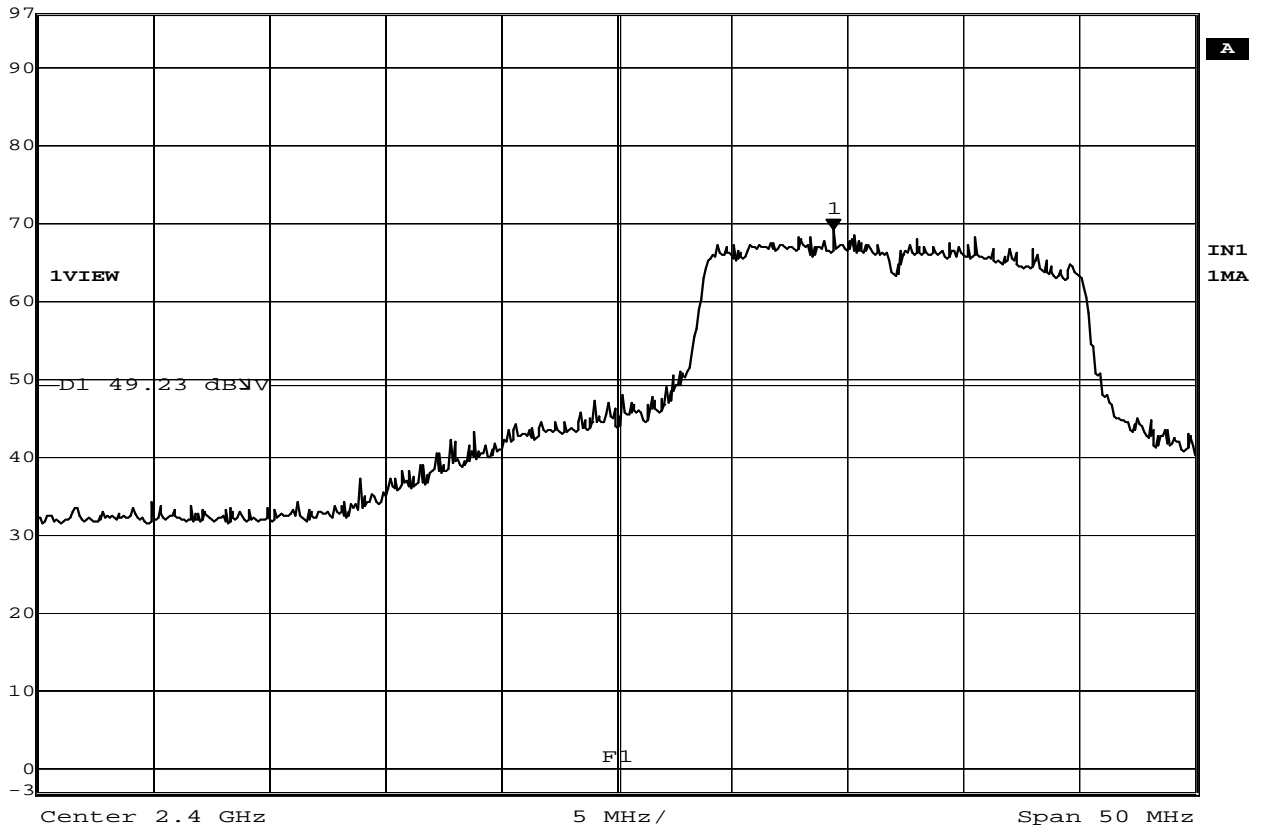
Date: 2.NOV.2010 19:06:05

FCC 15.247 Band Edge Compliance

MANUFACTURER : Continental Automotive
 MODEL NUMBER : Pass P3
 SERIAL NUMBER : FCC WiFi 1
 TEST MODE : Tx @ 2412MHz, 802.11 b
 NOTES : Internal Antenna
 TEST DATE : November 2, 2010
 TEST PARAMETERS : Band Edge Compliance
 NOTES : Display Line D1 represents the 20dB down point. The center frequency
 : (2400MHz) represents the band edge.
 EQUIPMENT USED : RBB0, NWI0



Marker 1 [T1] RBW 300 kHz RF Att 10 dB
 Ref Lvl 69.23 dBµV VBW 300 kHz
 97 dBµV 2.40936874 GHz SWT 5 ms Unit dBµV



Date: 2.NOV.2010 19:15:24

FCC 15.247 Band Edge Compliance

MANUFACTURER : Continental Automotive
 MODEL NUMBER : Pass P3
 SERIAL NUMBER : FCC WiFi 1
 TEST MODE : Tx @ 2412MHz, 802.11 g
 NOTES : Internal Antenna
 TEST DATE : November 2, 2010
 TEST PARAMETERS : Band Edge Compliance
 NOTES : Display Line D1 represents the 20dB down point. The center frequency
 : (2400MHz) represents the band edge.
 EQUIPMENT USED : RBB0, NWI0



Manufacturer : Continental Automotive
 Model No. : Pass 3
 Serial No. : FCC WiFi 1
 Specification : FCC-15.247 Band edge test
 Date : October 25, 2010 through November 2, 2010
 Mode : See Below
 Equipment Used : RBB0, NWI0
 Notes : Test Distance is 3 meters
 Notes : Peak Readings

Freq (MHz)	Ant Pol	Meter Reading (dBUV)	CBL Fac (dB)	Ant Fac (dB)	Pre Amp (dB)	Total dBuV/m at 3 M	Total uV/m at 3M	Limit uV/m at 3M	Margin (dB)	
Tx at 2462MHz – 802.11b, external antenna										
2483.500	H	34.7	3.8	31.4	0.0	69.9	3134.1	5000.0	-4.1	
2483.500	V	32.2	3.8	31.4	0.0	67.4	2350.2	5000.0	-6.6	
Tx at 2462 – 802.11g external antenna										
2483.500	H	36.4	3.8	31.4	0.0	71.6	3811.6	5000.0	-2.4	
2483.500	V	37.1	3.8	31.4	0.0	72.3	4131.5	5000.0	-1.7	
Tx at 2462MHz –802.11b internal antenna										
2483.500	H	33.4	3.8	31.4	0.0	68.6	2698.4	5000.0	-5.4	
2483.500	V	33.2	3.8	31.4	0.0	68.4	2637.0	5000.0	-5.6	
Tx at 2462MHz - 802.11g, internal antenna										
2483.500	H	34.1	3.8	31.4	0.0	69.3	2924.9	5000.0	-4.7	
2483.500	V	36.7	3.8	31.4	0.0	71.9	3945.6	5000.0	-2.1	

H – Horizontal V – Vertical

Total (dBuV/m) = Meter Reading (dBUV) + Cable Factor (dB) + Antenna Factor (dB) + Pre Amp (dB)



Manufacturer : Continental Automotive
 Model No. : Pass 3
 Serial No. : FCC WiFi 1
 Specification : FCC-15.247 Band edge test
 Date : October 25, 2010 through November 2, 2010
 Mode : See Below
 Equipment Used : RBB0, NWI0
 Notes : Test Distance is 3 meters
 Notes : Average Readings

Freq (MHz)	Ant Pol	Meter Reading (dBuV)	Ambient	CBL Fac (dB)	Ant Fac (dB)	Pre Amp (dB)	Duty Cycle (dB)	Total dBuV/m at 3 M	Total uV/m at 3M	Limit uV/m at 3M	Margin (dB)
Tx at 2462MHz – 802.11b, external antenna											
2483.50	H	14.8	Ambient	3.8	31.4	0.0	-8.5	41.5	119.3	500.0	-12.4
2483.50	V	14.3	Ambient	3.8	31.4	0.0	-8.5	41.0	112.6	500.0	-12.9
Tx at 2462MHz –802.11g, external antenna											
2483.50	H	17.4	Ambient	3.8	31.4	0.0	-23.9	28.7	27.2	500.0	-25.3
2483.50	V	15.2	Ambient	3.8	31.4	0.0	-23.9	26.5	21.1	500.0	-27.5
Tx at 2462MHz –802.11b, internal antenna											
2483.5	H	13.6	Ambient	3.8	31.4	0.0	-8.5	40.3	103.5	500.0	-13.7
2483.5	V	14.4	Ambient	3.8	31.4	0.0	-8.5	41.1	113.5	500.0	-12.9
Tx at 2462MHz – 802.11g, internal antenna											
2483.50	H	13.9	Ambient	3.8	31.4	0	-23.9	25.2	18.2	500.0	-28.8
2483.50	V	15.3	Ambient	3.8	31.4	0	-23.9	26.6	21.4	500.0	-27.4

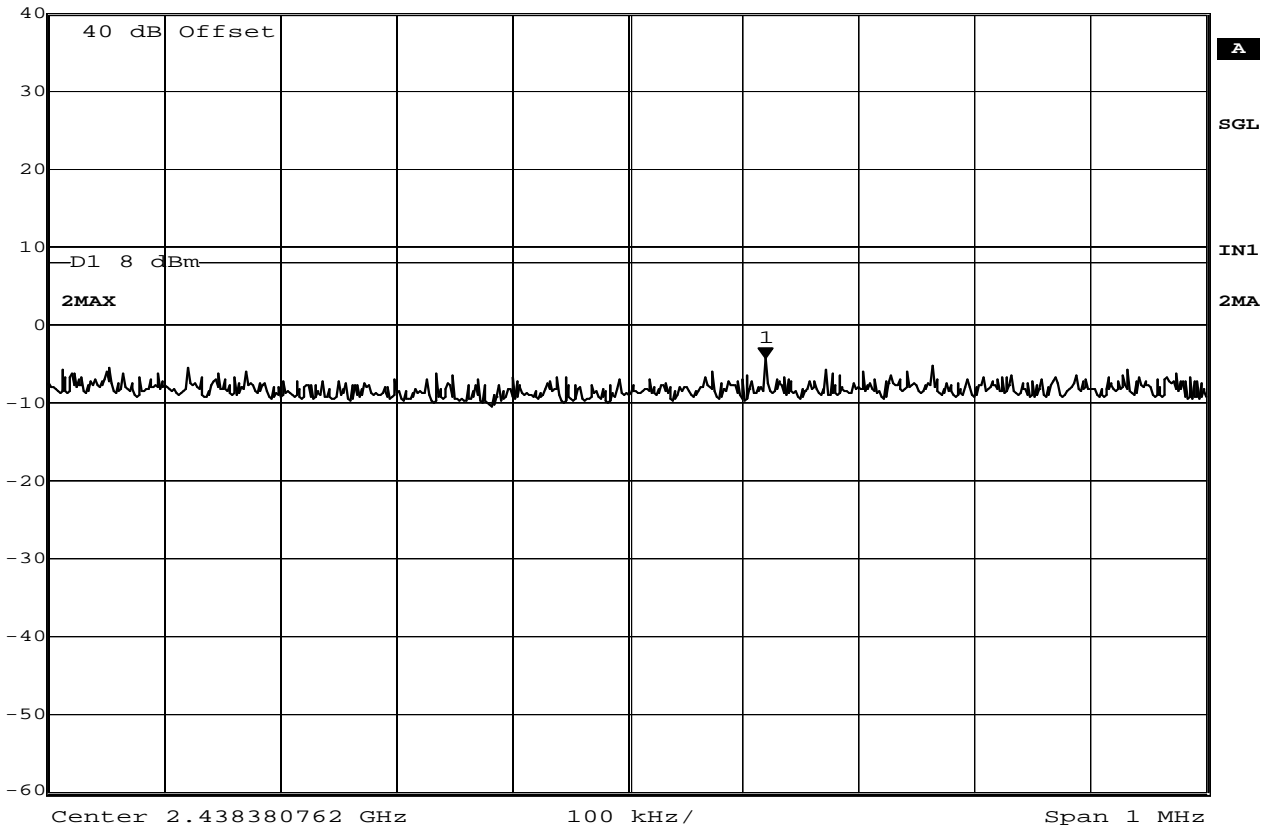
H – Horizontal

V – Vertical

Total (dBuV/m) = Meter Reading (dBuV) + Cable Factor (dB) + Antenna Factor (dB) + Pre Amp (dB) + Duty Cycle (dB)



Marker 1 [T2] RBW 3 kHz RF Att 10 dB
 Ref Lvl -4.28 dBm VBW 30 kHz
 40 dBm 2.43850000 GHz SWT 340 s Unit dBm



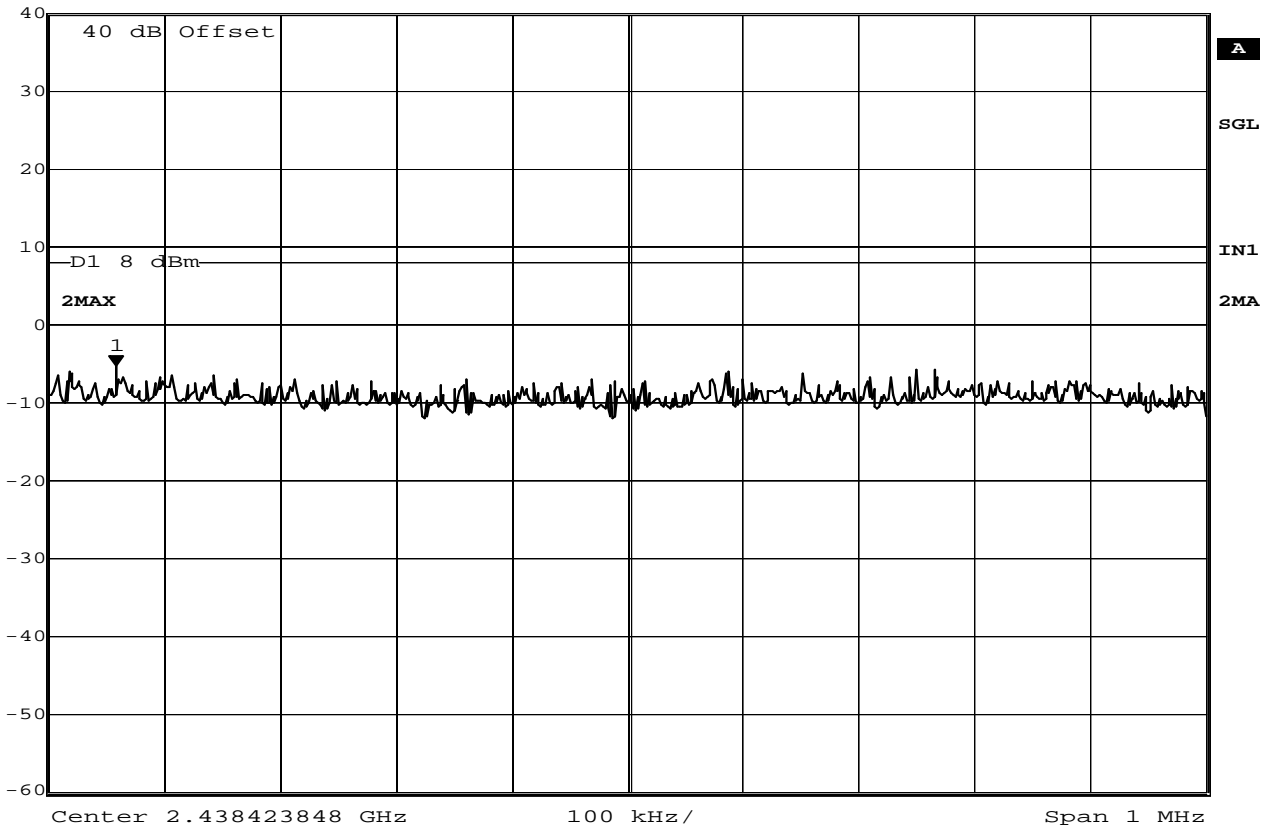
Date: 29.OCT.2010 10:18:55

FCC 15.247(d) Power Spectral Density

MANUFACTURER : Continental Automotive
 MODEL NUMBER : Pass P3
 SERIAL NUMBER : FCC WiFi 1
 TEST MODE : Tx @ 2437MHz, 802.11 b, 1Mbps, 64bytes payload
 NOTES : Antenna Conducted
 TEST DATE : October 29, 2010
 TEST PARAMETERS : Antenna Conducted Emissions
 NOTES : Display Line D1 Represents the +8.0dBm limit
 EQUIPMENT USED : RBA0, T2D2, T2S7



Marker 1 [T2] RBW 3 kHz RF Att 10 dB
 Ref Lvl -5.26 dBm VBW 30 kHz
 40 dBm 2.43798196 GHz SWT 340 s Unit dBm



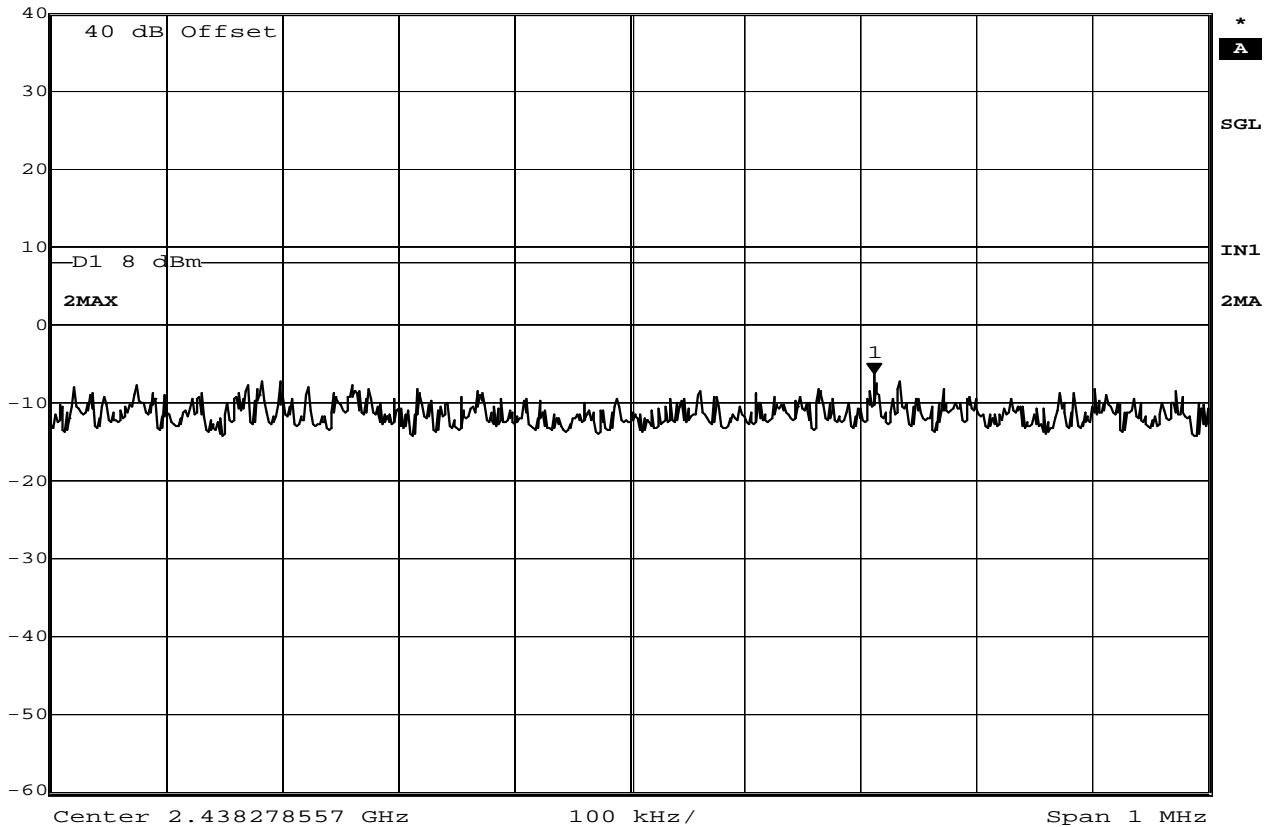
Date: 29.OCT.2010 10:32:37

FCC 15.247(d) Power Spectral Density

MANUFACTURER : Continental Automotive
 MODEL NUMBER : Pass P3
 SERIAL NUMBER : FCC WiFi 1
 TEST MODE : Tx @ 2437MHz, 802.11 b, 2Mbps, 64bytes payload
 NOTES : Antenna Conducted
 TEST DATE : October 29, 2010
 TEST PARAMETERS : Antenna Conducted Emissions
 NOTES : Display Line D1 Represents the +8.0dBm limit
 EQUIPMENT USED : RBA0, T2D2, T2S7



Marker 1 [T2] RBW 3 kHz RF Att 10 dB
 Ref Lvl -6.50 dBm VBW 30 kHz
 40 dBm 2.43848998 GHz SWT 340 s Unit dBm



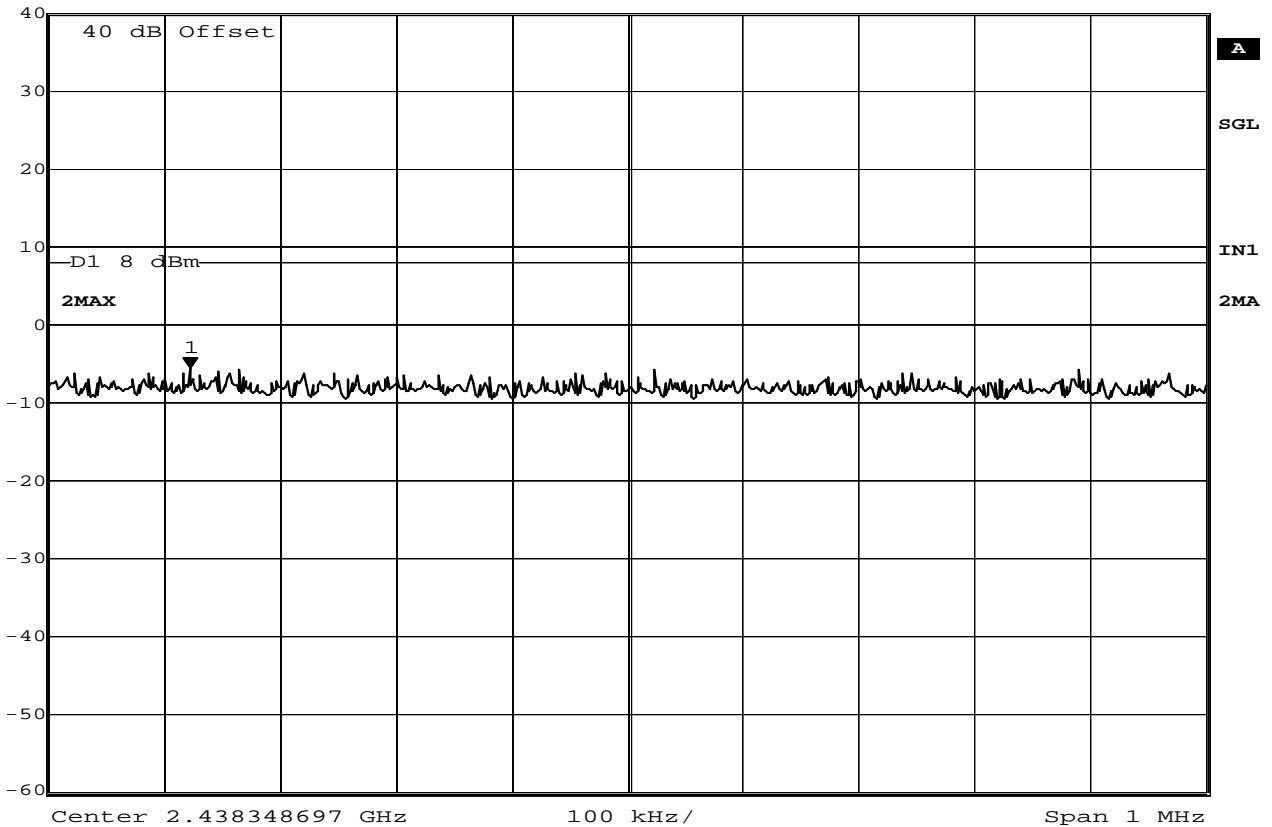
Date: 29.OCT.2010 10:41:48

FCC 15.247(d) Power Spectral Density

MANUFACTURER : Continental Automotive
 MODEL NUMBER : Pass P3
 SERIAL NUMBER : FCC WiFi 1
 TEST MODE : Tx @ 2437MHz, 802.11 b, 5.5Mbps, 64bytes payload
 NOTES : Antenna Conducted
 TEST DATE : October 29, 2010
 TEST PARAMETERS : Antenna Conducted Emissions
 NOTES : Display Line D1 Represents the +8.0dBm limit
 EQUIPMENT USED : RBA0, T2D2, T2S7



Ref Lvl 40 dBm
 Marker 1 [T2] 2.43797094 GHz
 RBW 3 kHz
 VBW 30 kHz
 RF Att 10 dB
 Unit dBm
 -5.66 dBm
 SWT 340 s



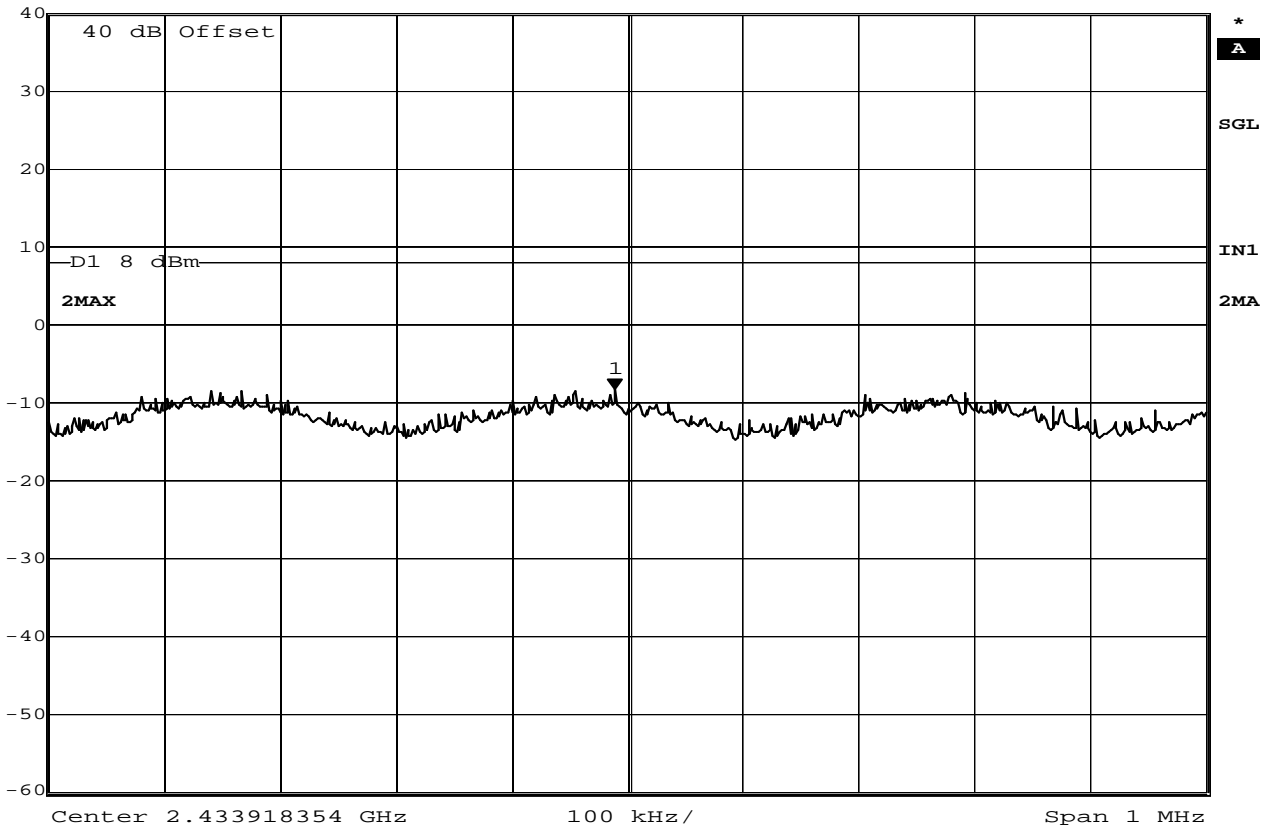
Date: 29.OCT.2010 11:45:53

FCC 15.247(d) Power Spectral Density

MANUFACTURER : Continental Automotive
 MODEL NUMBER : Pass P3
 SERIAL NUMBER : FCC WiFi 1
 TEST MODE : Tx @ 2437MHz, 802.11 b, 11Mbps, 2048 bytes payload
 NOTES : Antenna Conducted
 TEST DATE : October 29, 2010
 TEST PARAMETERS : Antenna Conducted Emissions
 NOTES : Display Line D1 Represents the +8.0dBm limit
 EQUIPMENT USED : RBA0, T2D2, T2S7



Ref Lvl 40 dBm
 Marker 1 [T2] -8.44 dBm
 2.43390733 GHz
 RBW 3 kHz
 VBW 30 kHz
 RF Att 10 dB
 SWT 340 s
 Unit dBm



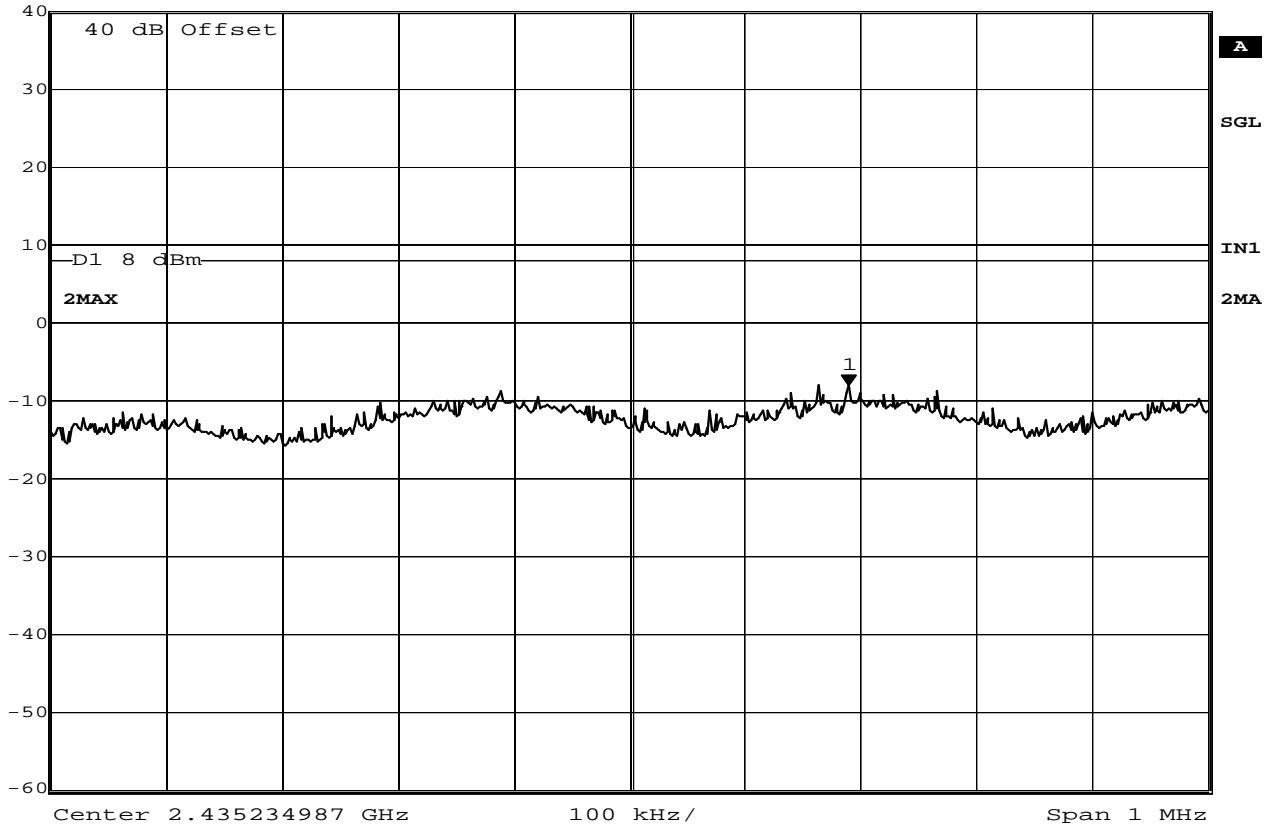
Date: 29.OCT.2010 11:56:28

FCC 15.247(d) Power Spectral Density

MANUFACTURER : Continental Automotive
 MODEL NUMBER : Pass P3
 SERIAL NUMBER : FCC WiFi 1
 TEST MODE : Tx @ 2437MHz, 802.11 g, 6 Mbps, 2048 bytes payload
 NOTES : Antenna Conducted
 TEST DATE : October 29, 2010
 TEST PARAMETERS : Antenna Conducted Emissions
 NOTES : Display Line D1 Represents the +8.0dBm limit
 EQUIPMENT USED : RBA0, T2D2, T2S7



Marker 1 [T2] RBW 3 kHz RF Att 10 dB
 Ref Lvl -8.00 dBm VBW 30 kHz
 40 dBm 2.43542437 GHz SWT 340 s Unit dBm



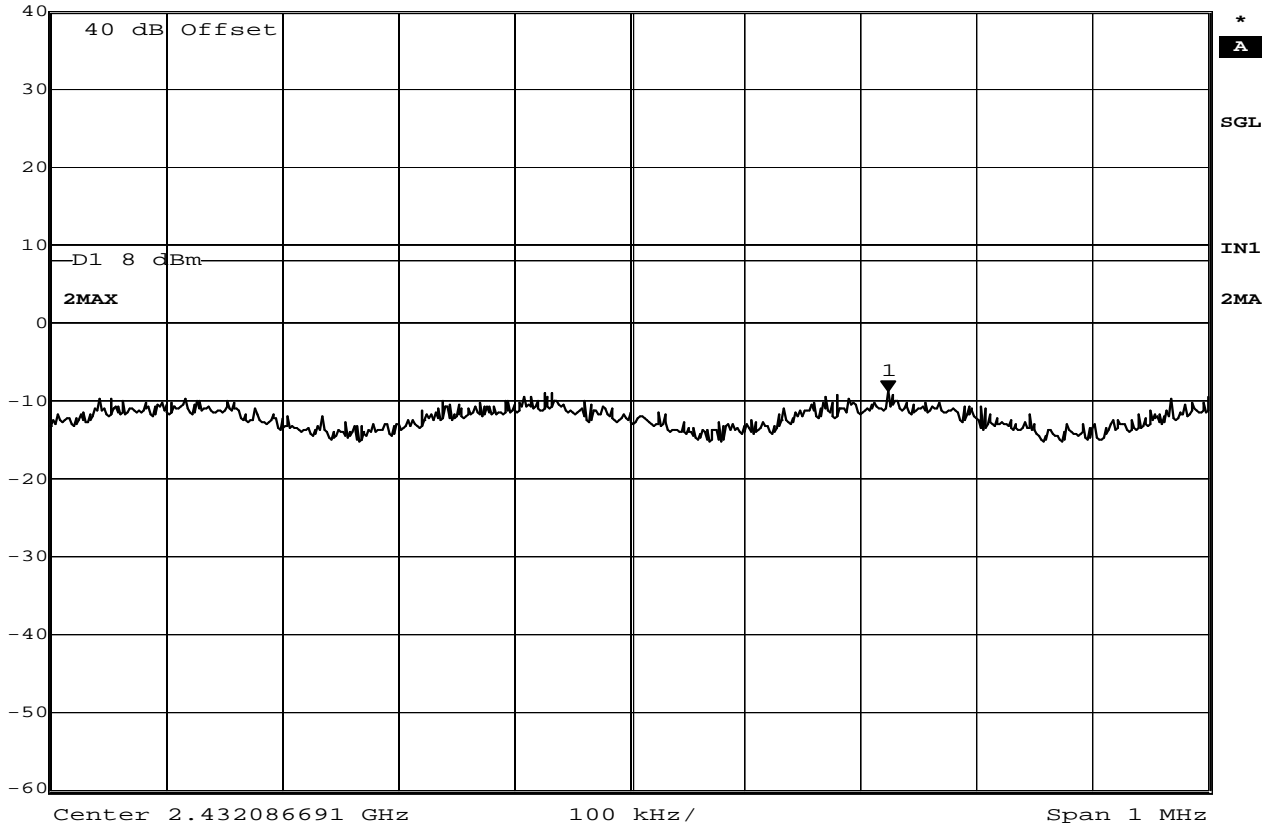
Date: 29.OCT.2010 12:06:02

FCC 15.247(d) Power Spectral Density

MANUFACTURER : Continental Automotive
 MODEL NUMBER : Pass P3
 SERIAL NUMBER : FCC WiFi 1
 TEST MODE : Tx @ 2437MHz, 802.11 g, 9 Mbps, 2048 bytes payload
 NOTES : Antenna Conducted
 TEST DATE : October 29, 2010
 TEST PARAMETERS : Antenna Conducted Emissions
 NOTES : Display Line D1 Represents the +8.0dBm limit
 EQUIPMENT USED : RBA0, T2D2, T2S7



Marker 1 [T2] RBW 3 kHz RF Att 10 dB
 Ref Lvl -8.94 dBm VBW 30 kHz
 40 dBm 2.43231014 GHz SWT 340 s Unit dBm



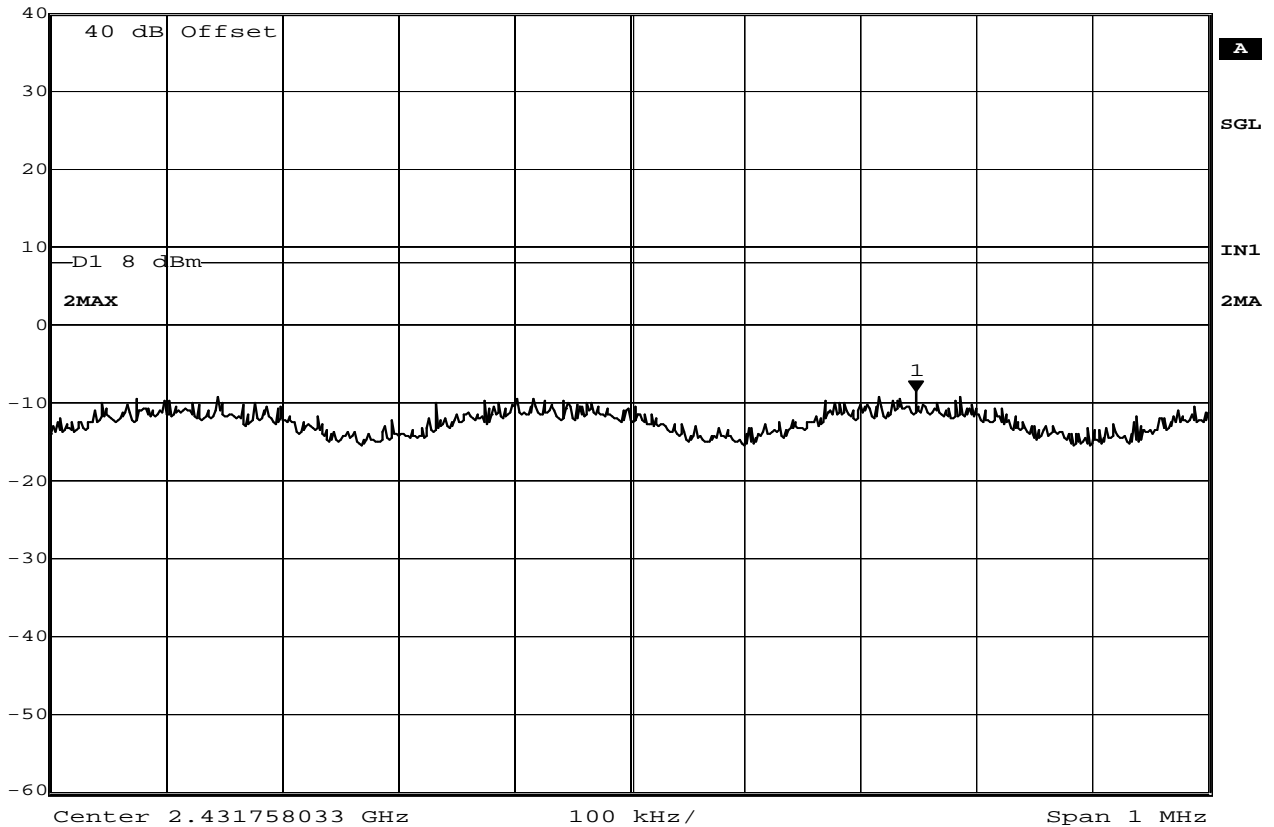
Date: 29.OCT.2010 12:15:01

FCC 15.247(d) Power Spectral Density

MANUFACTURER : Continental Automotive
 MODEL NUMBER : Pass P3
 SERIAL NUMBER : FCC WiFi 1
 TEST MODE : Tx @ 2437MHz, 802.11 g, 12 Mbps, 2048 bytes payload
 NOTES : Antenna Conducted
 TEST DATE : October 29, 2010
 TEST PARAMETERS : Antenna Conducted Emissions
 NOTES : Display Line D1 Represents the +8.0dBm limit
 EQUIPMENT USED : RBA0, T2D2, T2S7



Marker 1 [T2] RBW 3 kHz RF Att 10 dB
 Ref Lvl -8.51 dBm VBW 30 kHz
 40 dBm 2.43200553 GHz SWT 340 s Unit dBm



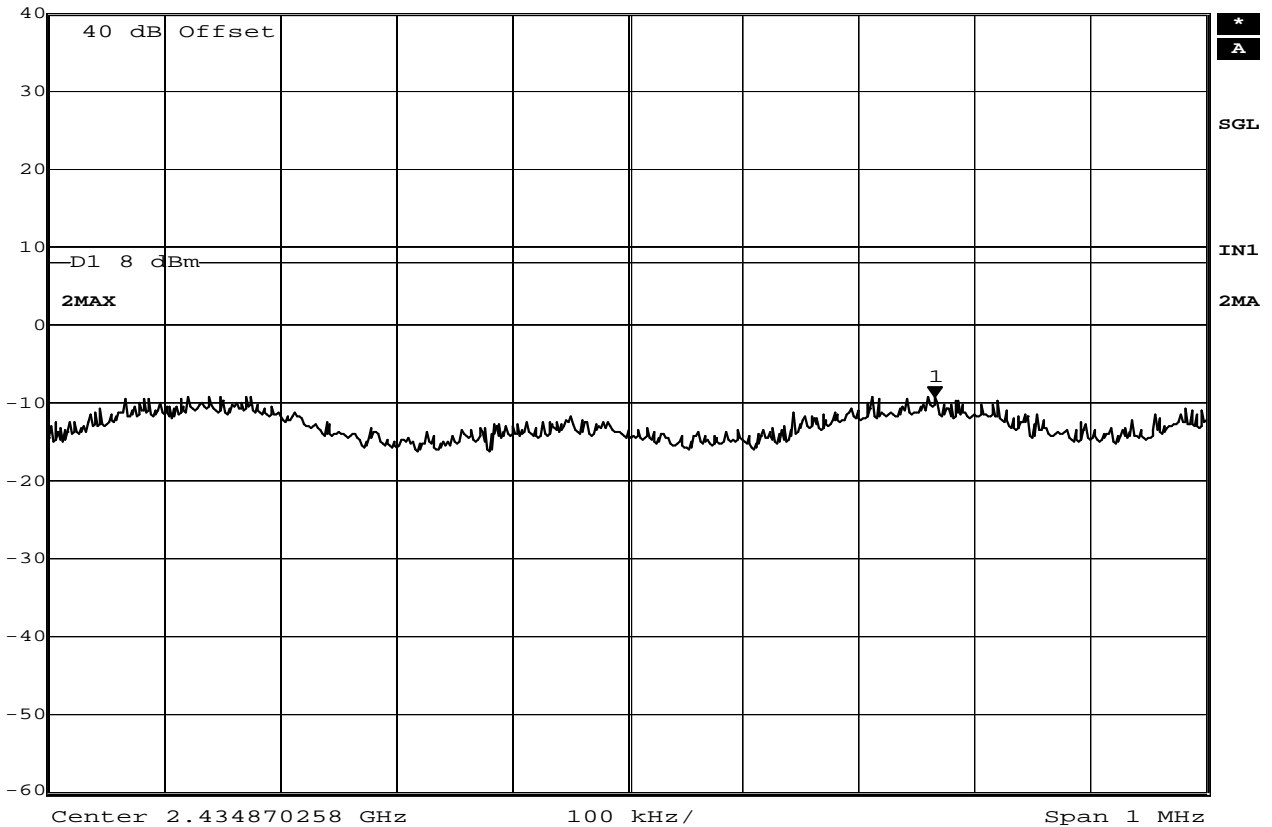
Date: 29.OCT.2010 12:23:17

FCC 15.247(d) Power Spectral Density

MANUFACTURER : Continental Automotive
 MODEL NUMBER : Pass P3
 SERIAL NUMBER : FCC WiFi 1
 TEST MODE : Tx @ 2437MHz, 802.11 g, 18 Mbps, 2048 bytes payload
 NOTES : Antenna Conducted
 TEST DATE : October 29, 2010
 TEST PARAMETERS : Antenna Conducted Emissions
 NOTES : Display Line D1 Represents the +8.0dBm limit
 EQUIPMENT USED : RBA0, T2D2, T2S7



Marker 1 [T2] RBW 3 kHz RF Att 10 dB
 Ref Lvl -9.26 dBm VBW 30 kHz
 40 dBm 2.43513579 GHz SWT 340 s Unit dBm



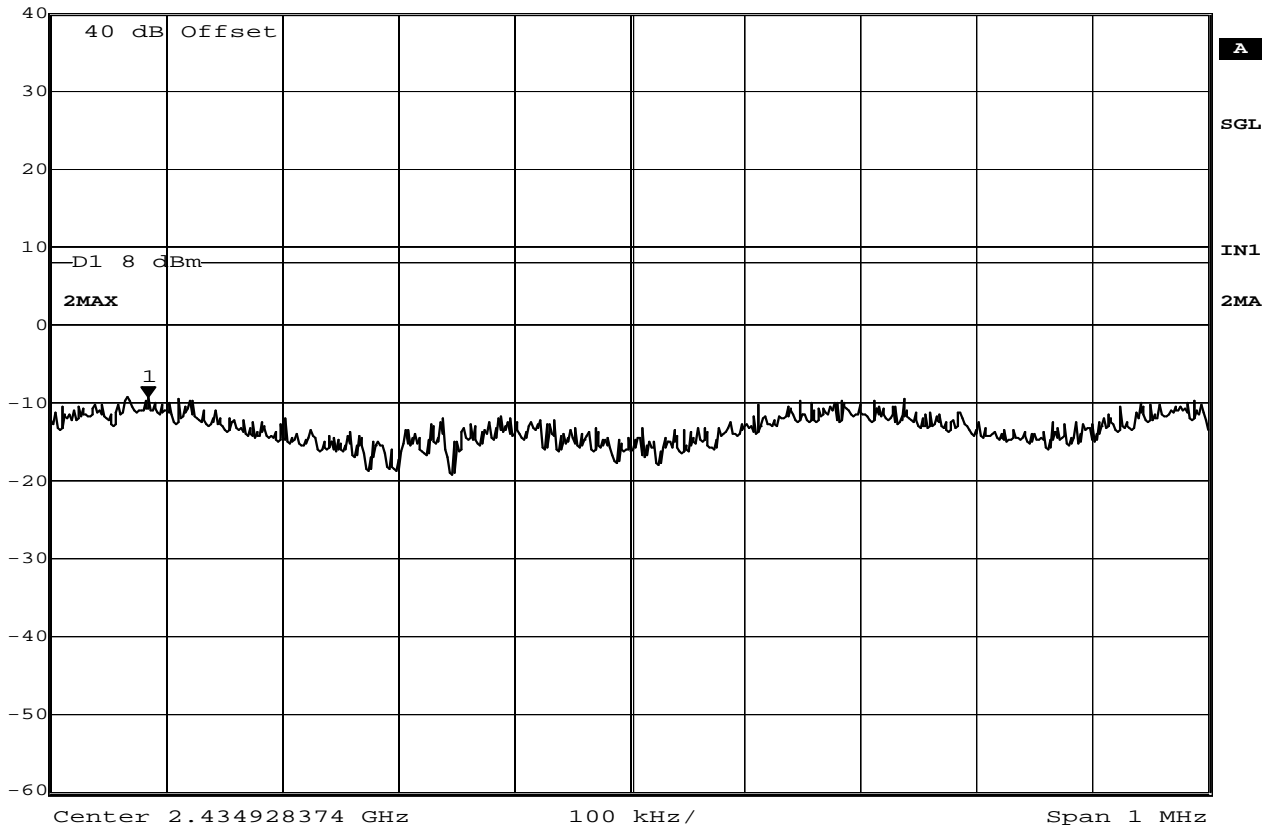
Date: 29.OCT.2010 12:31:37

FCC 15.247(d) Power Spectral Density

MANUFACTURER : Continental Automotive
 MODEL NUMBER : Pass P3
 SERIAL NUMBER : FCC WiFi 1
 TEST MODE : Tx @ 2437MHz, 802.11 g, 24 Mbps, 2048 bytes payload
 NOTES : Antenna Conducted
 TEST DATE : October 29, 2010
 TEST PARAMETERS : Antenna Conducted Emissions
 NOTES : Display Line D1 Represents the +8.0dBm limit
 EQUIPMENT USED : RBA0, T2D2, T2S7



Marker 1 [T2] RBW 3 kHz RF Att 10 dB
 Ref Lvl -9.44 dBm VBW 30 kHz
 40 dBm 2.43451254 GHz SWT 340 s Unit dBm



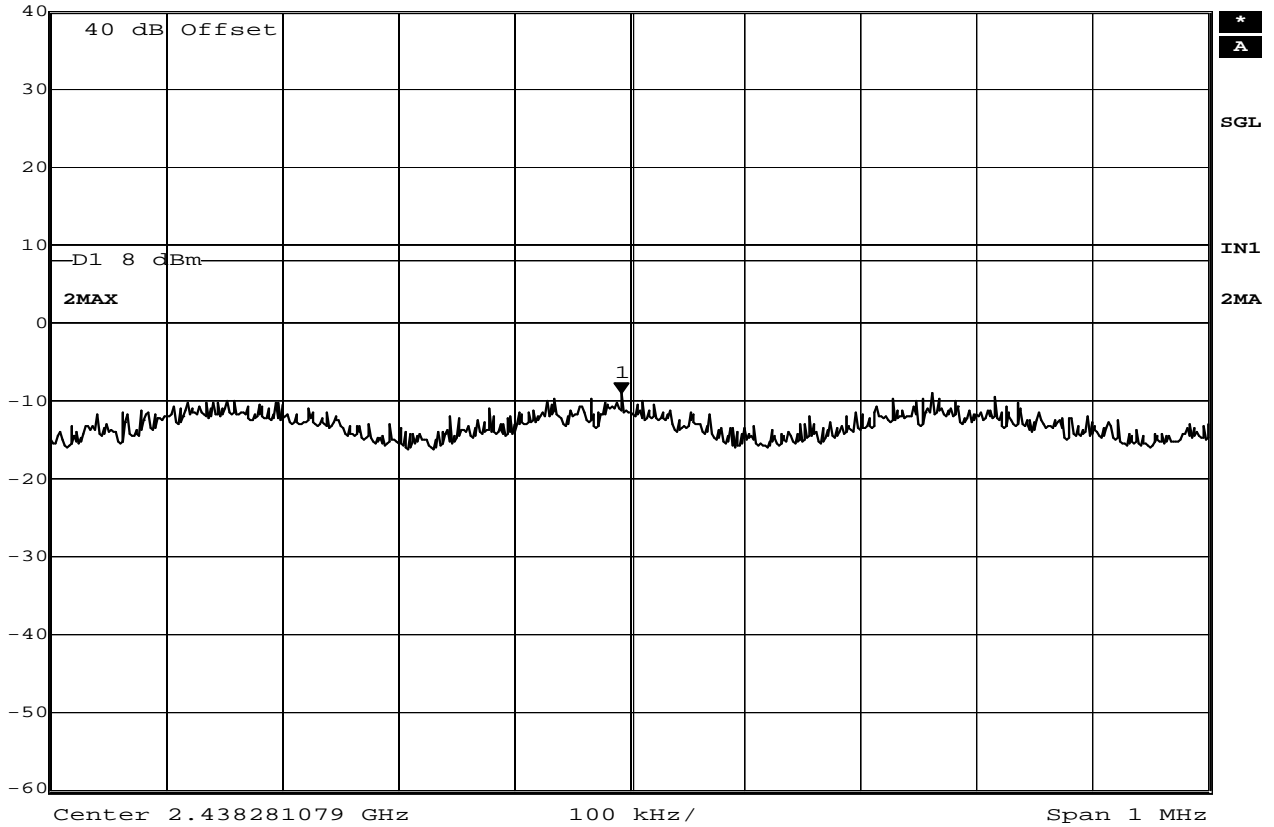
Date: 29.OCT.2010 12:40:05

FCC 15.247(d) Power Spectral Density

MANUFACTURER : Continental Automotive
 MODEL NUMBER : Pass P3
 SERIAL NUMBER : FCC WiFi 1
 TEST MODE : Tx @ 2437MHz, 802.11 g, 36 Mbps, 2048 bytes payload
 NOTES : Antenna Conducted
 TEST DATE : October 29, 2010
 TEST PARAMETERS : Antenna Conducted Emissions
 NOTES : Display Line D1 Represents the +8.0dBm limit
 EQUIPMENT USED : RBA0, T2D2, T2S7



Marker 1 [T2] RBW 3 kHz RF Att 10 dB
 Ref Lvl -9.11 dBm VBW 30 kHz
 40 dBm 2.43827407 GHz SWT 340 s Unit dBm



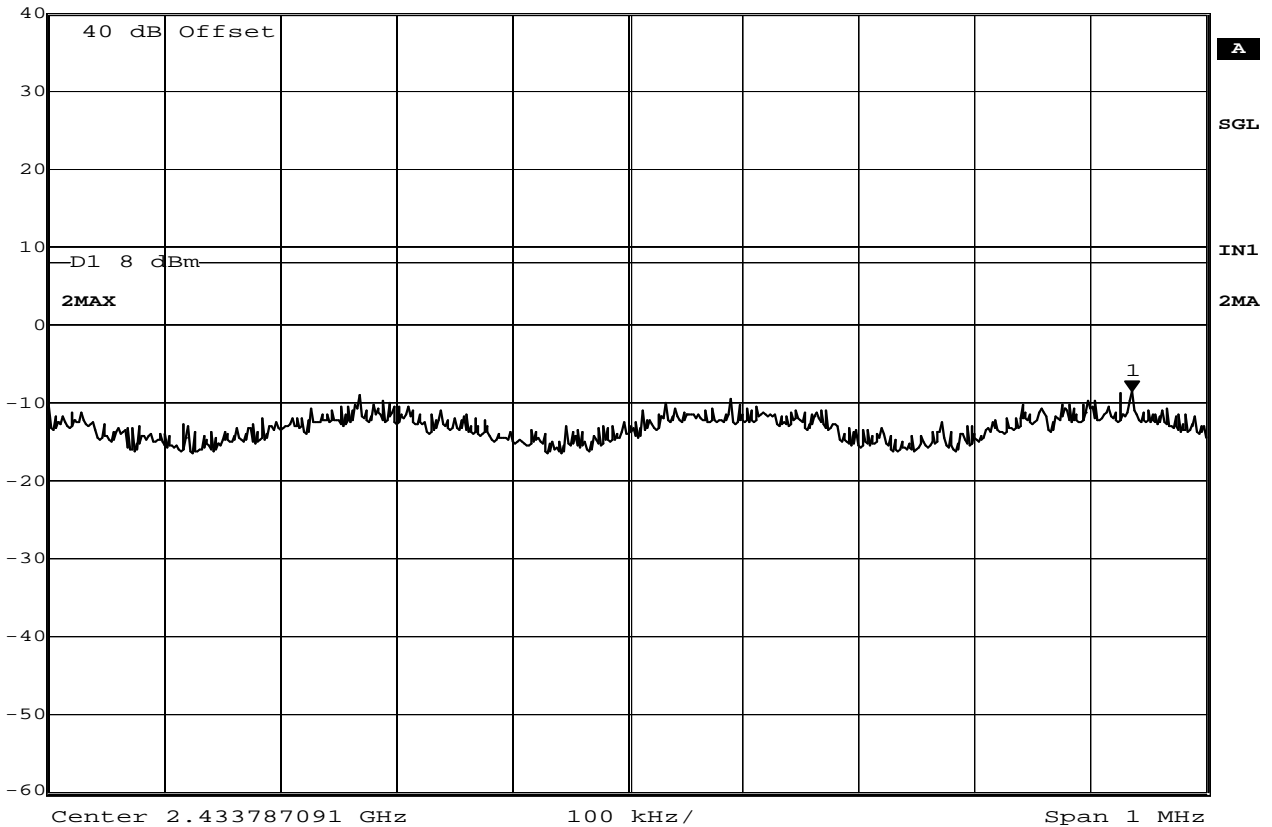
Date: 29.OCT.2010 12:48:06

FCC 15.247(d) Power Spectral Density

MANUFACTURER : Continental Automotive
 MODEL NUMBER : Pass P3
 SERIAL NUMBER : FCC WiFi 1
 TEST MODE : Tx @ 2437MHz, 802.11 g, 48 Mbps, 2048 bytes payload
 NOTES : Antenna Conducted
 TEST DATE : October 29, 2010
 TEST PARAMETERS : Antenna Conducted Emissions
 NOTES : Display Line D1 Represents the +8.0dBm limit
 EQUIPMENT USED : RBA0, T2D2, T2S7



Marker 1 [T2] RBW 3 kHz RF Att 10 dB
 Ref Lvl -8.67 dBm VBW 30 kHz
 40 dBm 2.43422296 GHz SWT 340 s Unit dBm



Date: 29.OCT.2010 12:56:30

FCC 15.247(d) Power Spectral Density

MANUFACTURER : Continental Automotive
 MODEL NUMBER : Pass P3
 SERIAL NUMBER : FCC WiFi 1
 TEST MODE : Tx @ 2437MHz, 802.11 g, 54 Mbps, 2048 bytes payload
 NOTES : Antenna Conducted
 TEST DATE : October 29, 2010
 TEST PARAMETERS : Antenna Conducted Emissions
 NOTES : Display Line D1 Represents the +8.0dBm limit
 EQUIPMENT USED : RBA0, T2D2, T2S7