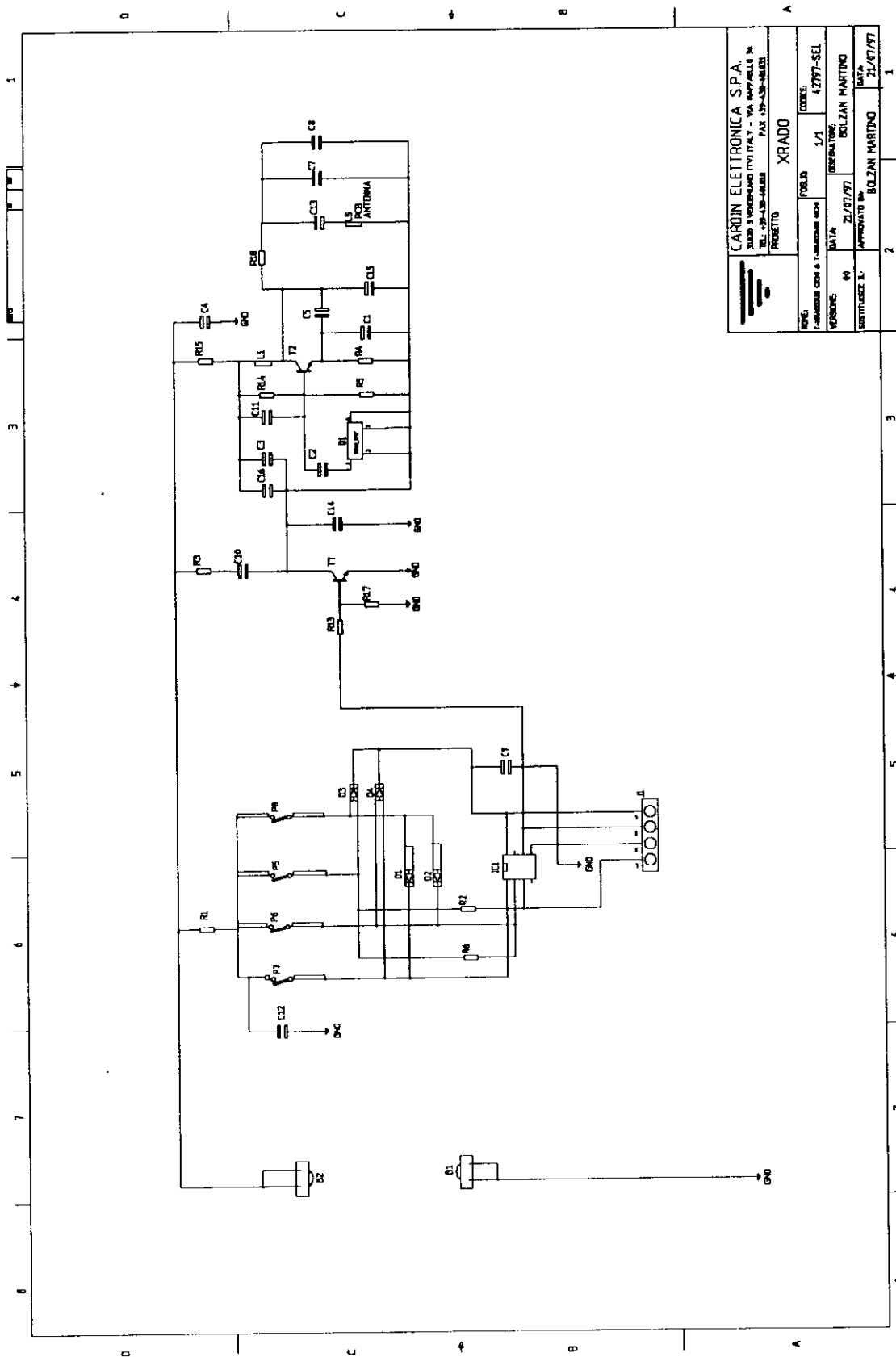
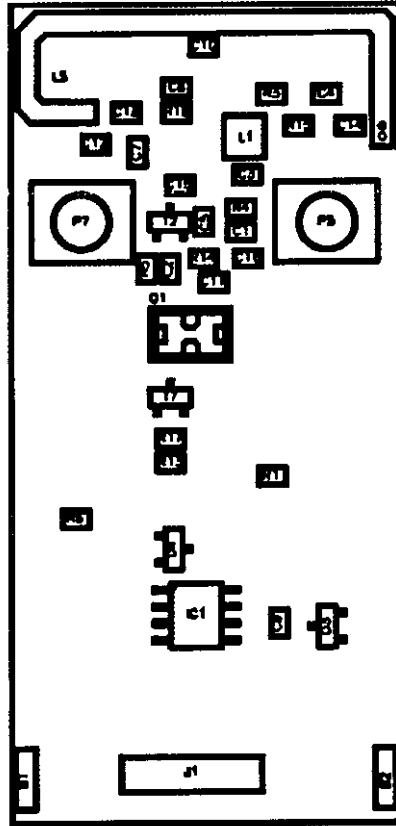



## 5.0 TRANSMITTERS

### 5.1 Two and four-channel transmitters wiring diagram

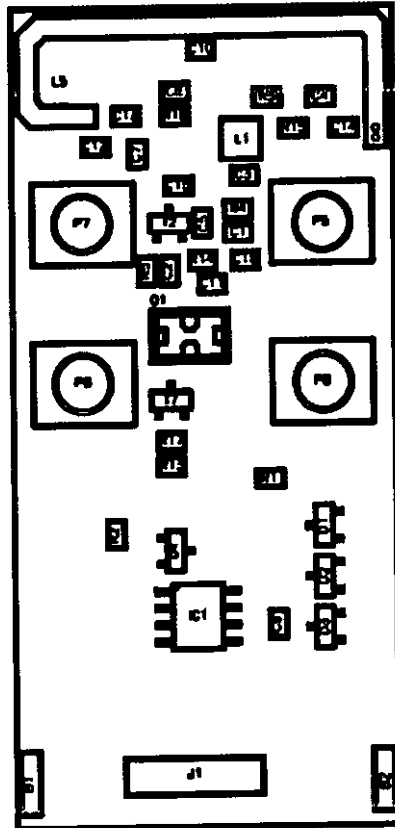



5.2 Two-channel transmitter component layout



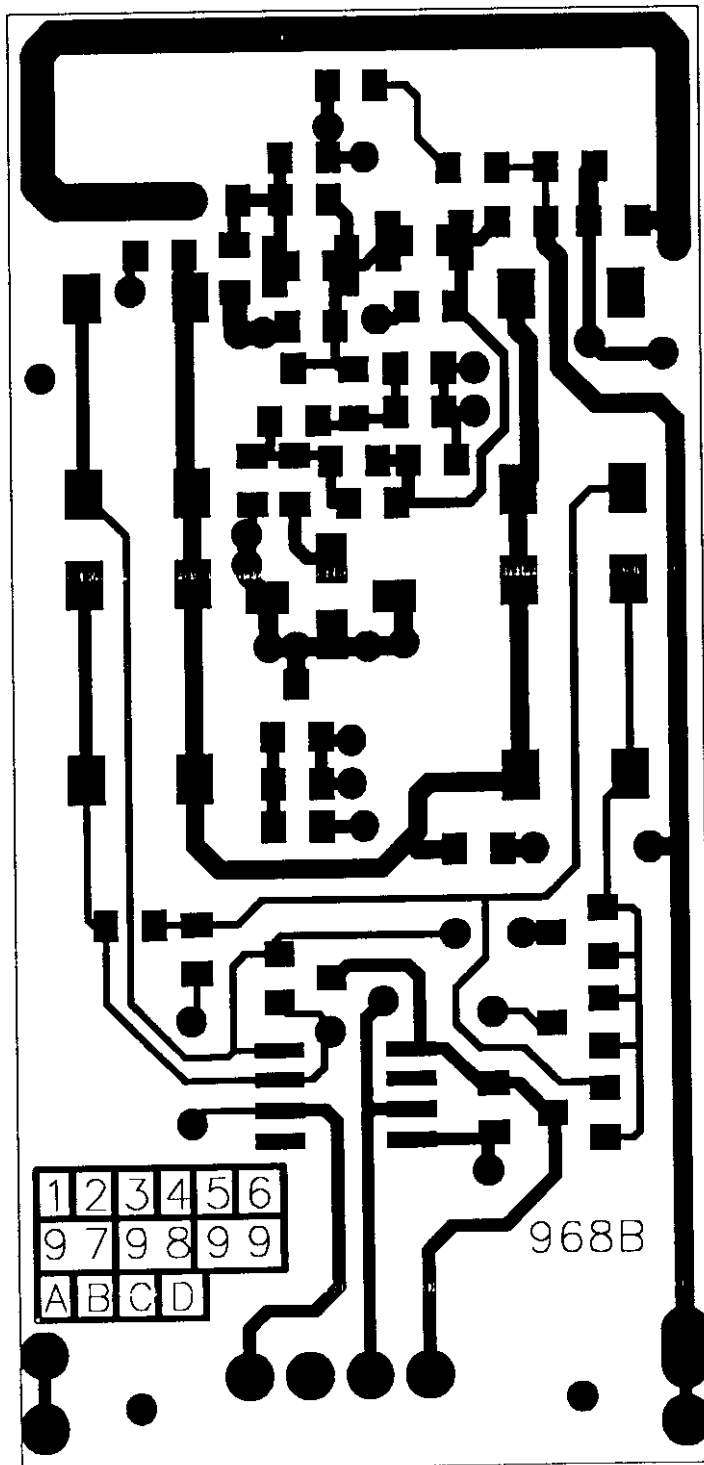
		<b>CARDIN ELETTRONICA S.p.A.</b> 31020 S.VENDEMIANO (TV) ITALY - VIA RAFFAELLO ,36 TEL: +39-438-401818      FAX: +39-438-401831	
		PROGETTO: <b>XRADO</b>	
NOME: <b>T-XRADO2US</b>		FOGLIO: <b>1/1</b>	CODICE: <b>42797-PC1</b>
VERSIONE: <b>00</b>	DISEGNATORE: <b>BOLZAN MARTINO</b>		DATA: <b>21/07/97</b>
DATABASE: <b>db</b>	APPROVATO DA: <b>BOLZAN MARTINO</b>		DATA: <b>21/07/97</b>

5.3 Four-channel transmitter component layout

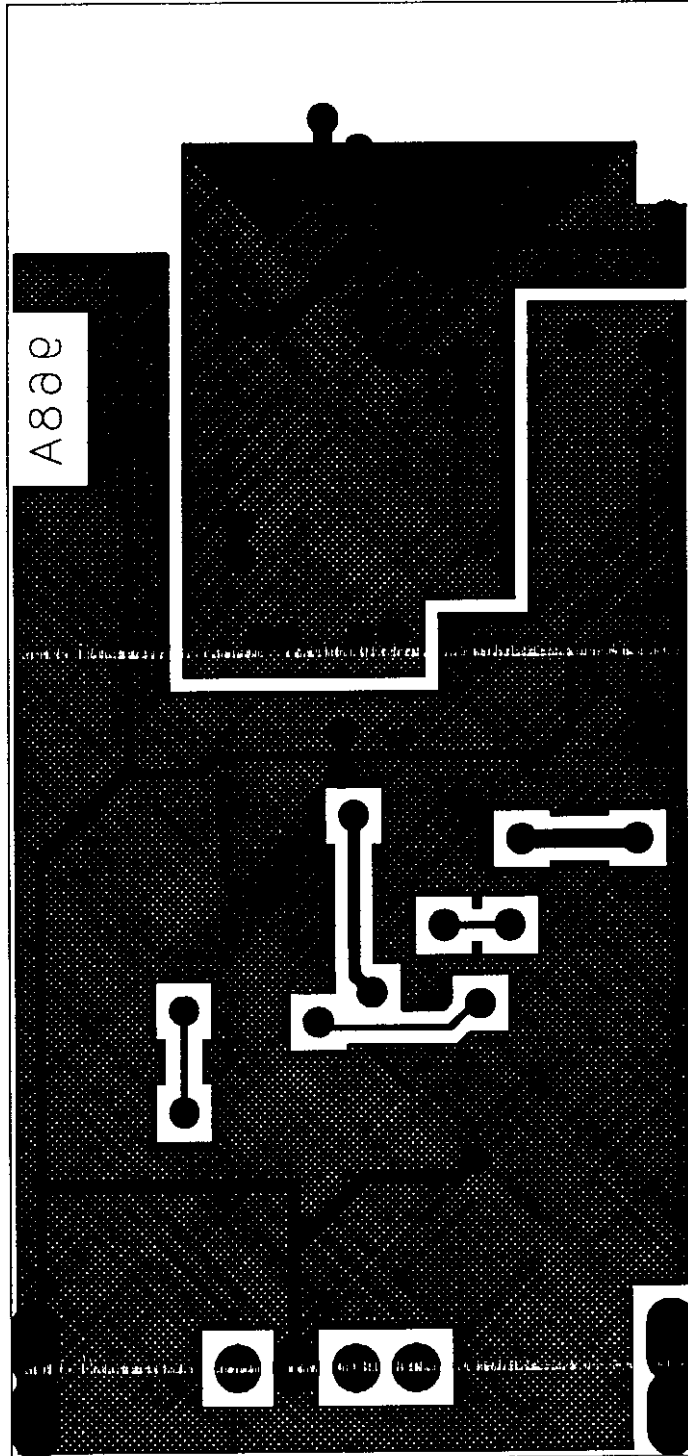


			<b>CARDIN ELETTRONICA S.p.A.</b> 31020 S.VENDEMIANO (TV) ITALY - VIA RAFFAELLO ,36 TEL: +39-438-401818      FAX: +39-438-401831		
PROGETTO:			XRADO		
NOME: T-XRADO4US		FOGLIO: 1/1	CODICE: 42797-PC1		
VERSIONE: 00	DISEGNATORE: BOLZAN MARTINO		DATA: 21/07/97		
DATABASE: db	APPROVATO DA: BOLZAN MARTINO		DATA: 21/07/97		

5.6 Two and four-channel transmitters PCB component side

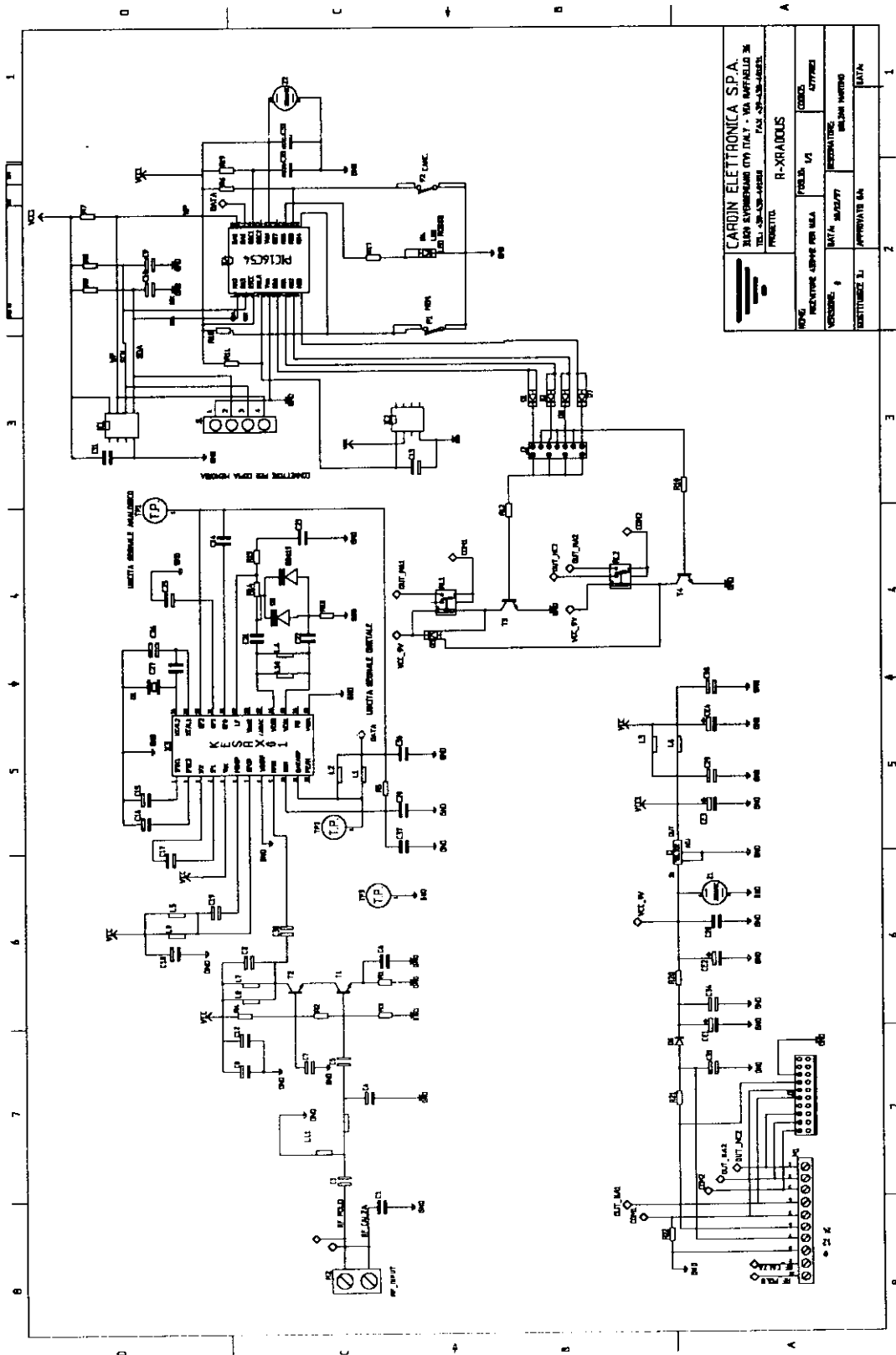


5.7 Two and four-channel transmitters PCB soldered side

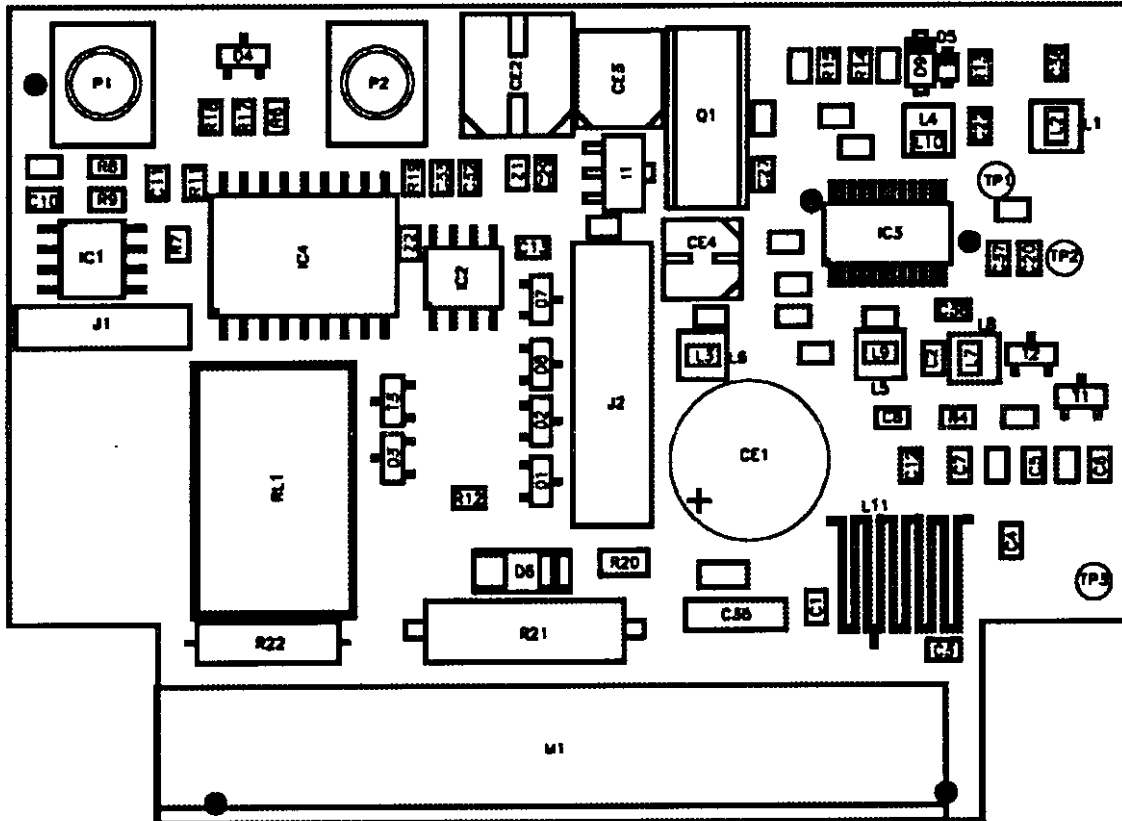



## 6.0 RECEIVERS

### 6.1 One and two-channel MINI and CARD receivers wiring diagram

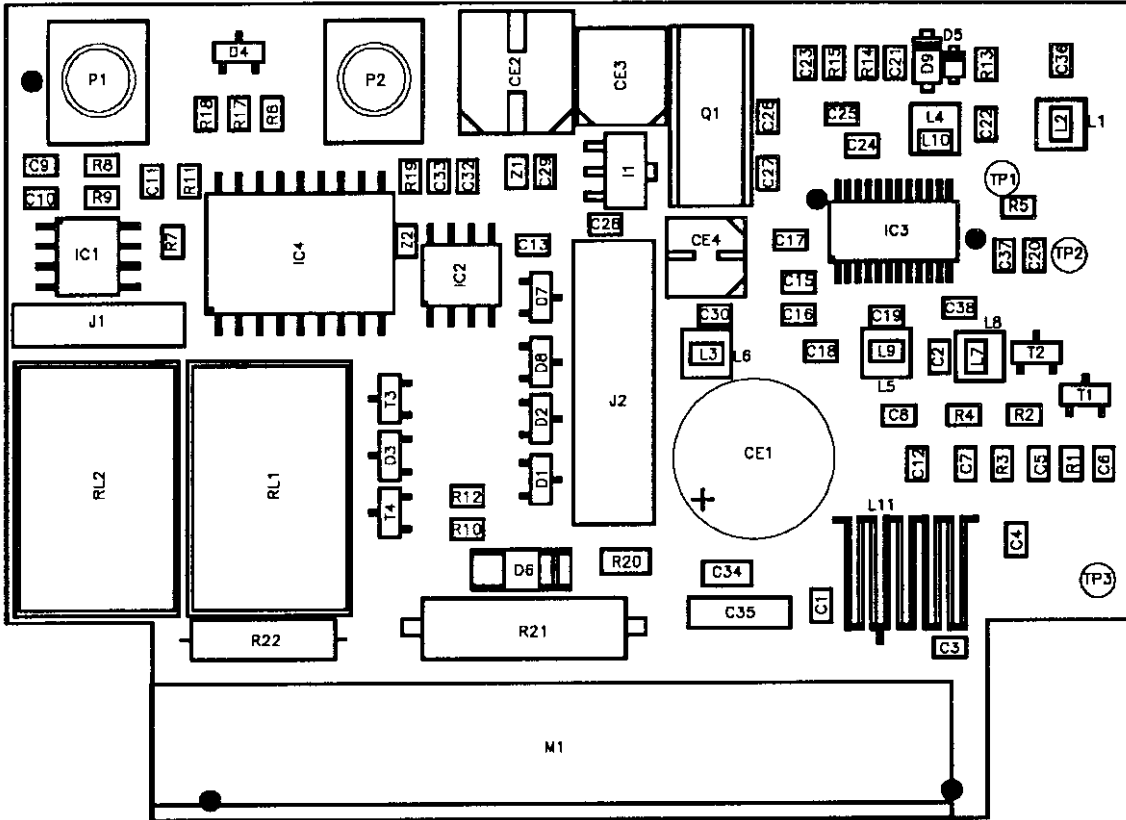



6.2 One-channel MINI receiver component layout



			<b>CARDIN ELETTRONICA S.p.A.</b> 31020 S.VENDEMIANO (TV) ITALY - VIA RAFFAELLO ,36 TEL: +39-438-401818      FAX: +39-438-401831		
			<b>PROGETTO:</b> RICEVITORE XRADO USA		
<b>NOME:</b> RX MINI 1CH		<b>DATABASE:</b> db2		<b>CODICE:</b> 42797	
<b>VERSIONE:</b> 00	<b>DISEGNATORE:</b> EROS LAVINA			<b>DATA:</b> 27/01/1998	
	<b>APPROVATO DA:</b> MARTINO BOLZAN			<b>DATA:</b> 27/01/1998	

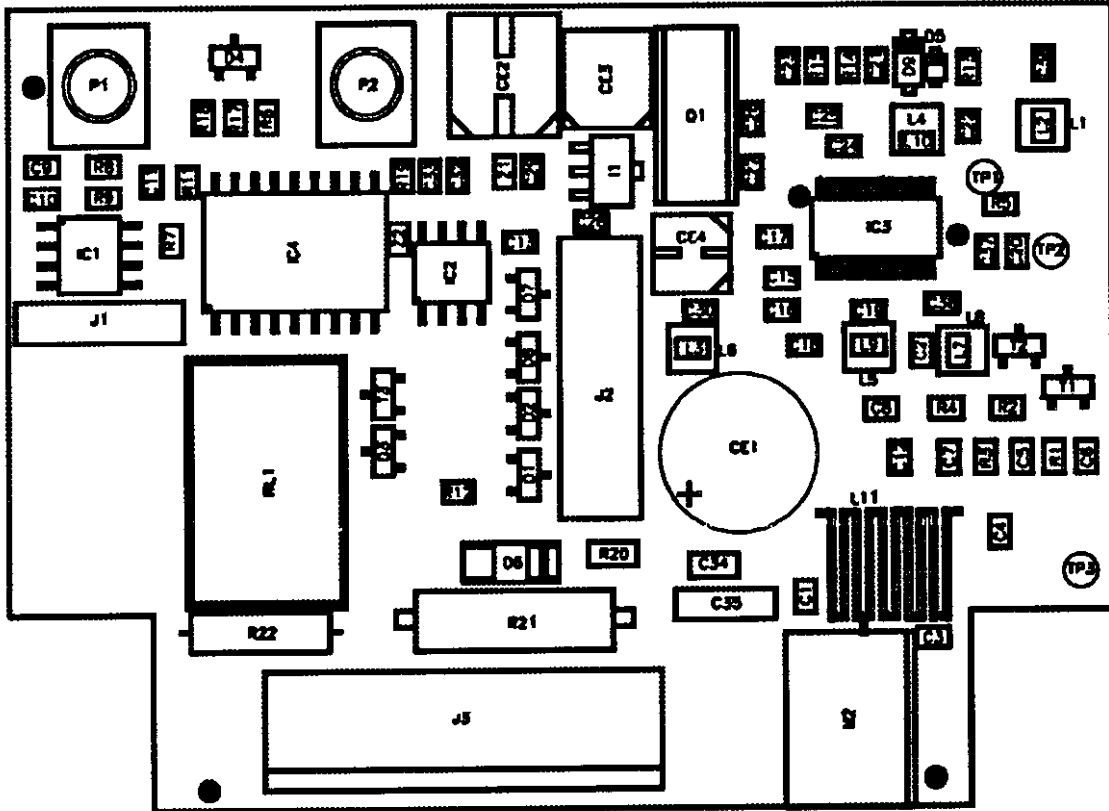
6.3 Two-channel MINI receiver component layout




 <p>CARDIN ELETTRONICA S.p.A.          31020 S.VENDEMIANO (TV) ITALY – VIA RAFFAELLO ,36          TEL: +39-438-401818 FAX: +39-438-401831</p>			
			<p>PROGETTO:          RICEVITORE XRADO USA</p>
<p>NOME:          RX MINI 2CH</p>		<p>DATABASE:          db2</p>	<p>CODICE:          42797</p>
<p>VERSIONE:          00</p>	<p>DISEGNATORE:          EROS LAVINA</p>		<p>DATA:          27/01/1998</p>
<p>APPROVATO DA:          MARTINO BOLZAN</p>		<p>DATA:          27/01/1998</p>	

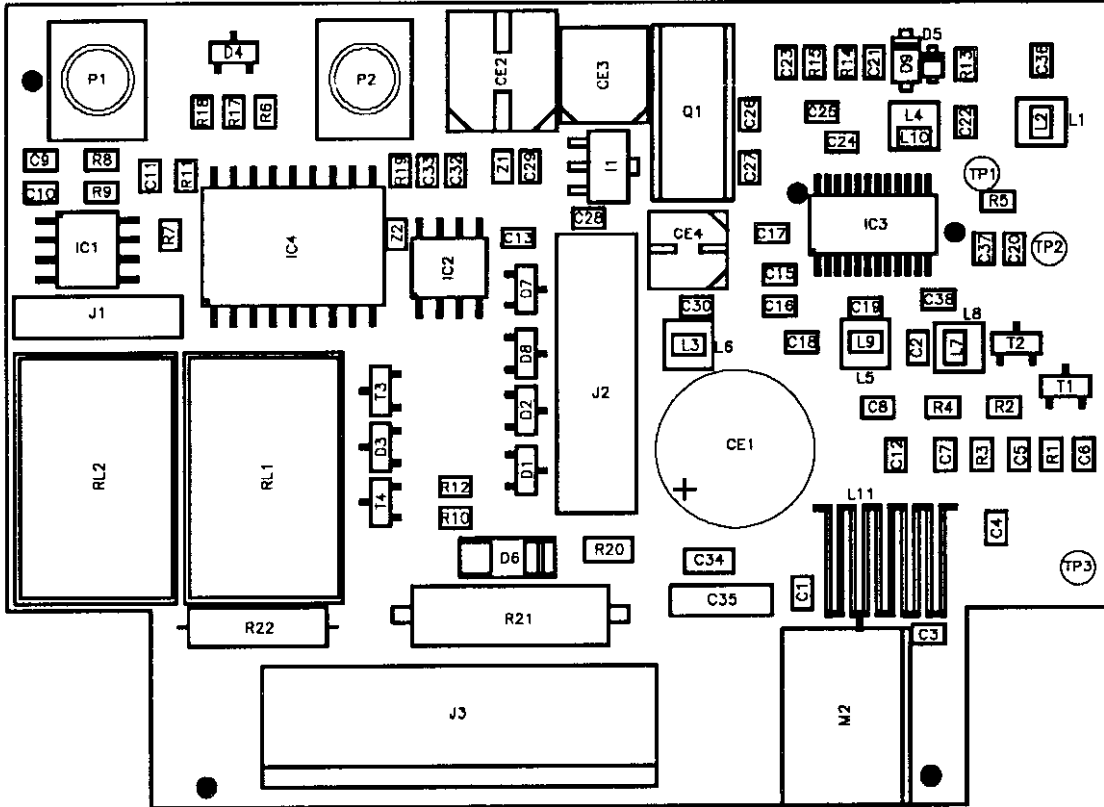



6.4 One-channel CARD receiver component layout



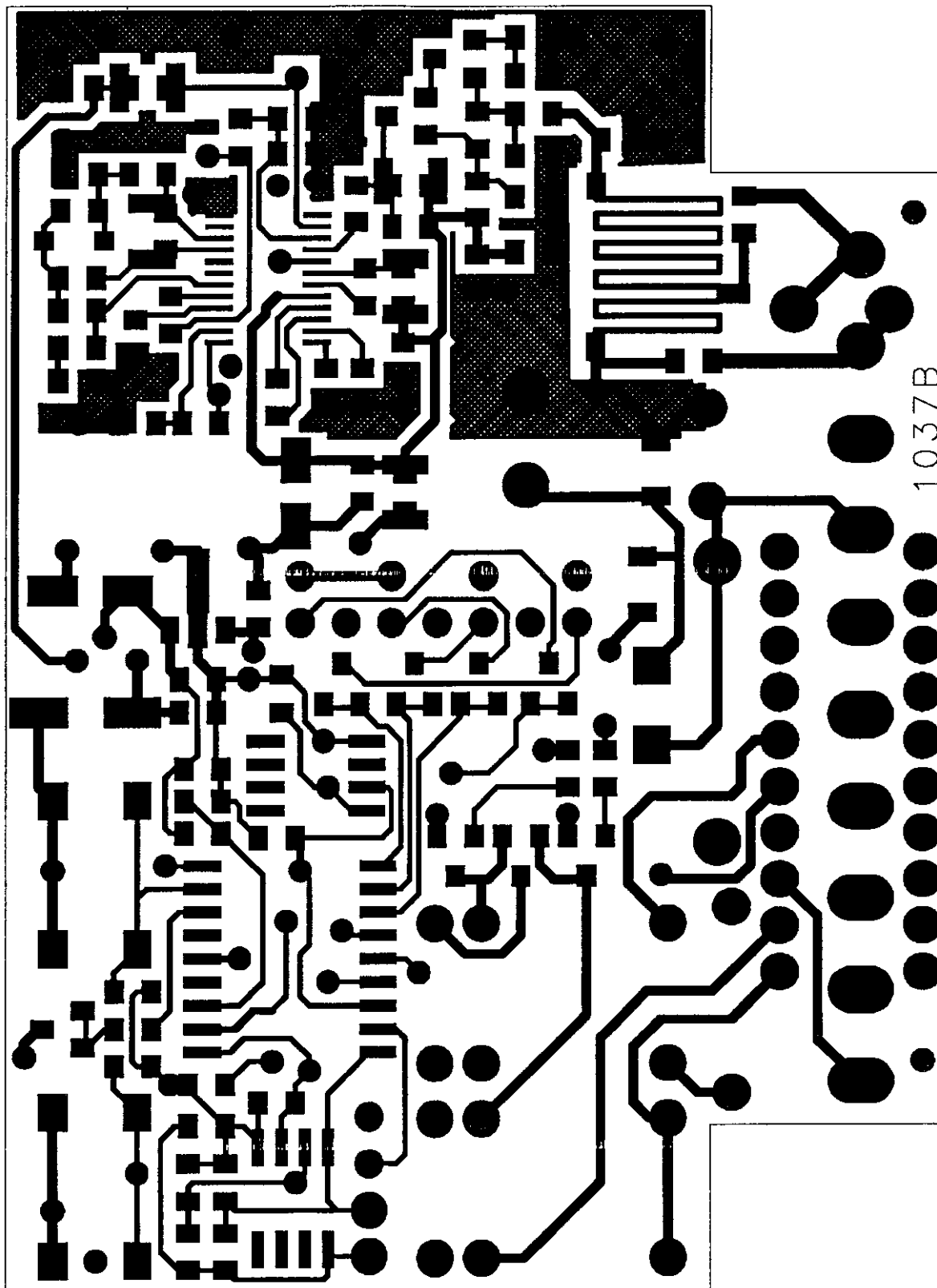
			<b>CARDIN ELETTRONICA S.p.A.</b> 31020 S.VENDEMIANO (TV) ITALY - VIA RAFFAELLO ,36 TEL: +39-438-401818      FAX: +39-438-401831		
			PROGETTO: <b>RICEVITORE XRADO USA</b>		
NOME: RX SCHEDA 1CH		DATABASE: db2		CODICE: 42797	
VERSIONE: 00	DISEGNATORE: EROS LAVINA			DATA: 27/01/1998	
	APPROVATO DA: MARTINO BOLZAN			DATA: 27/01/1998	

6.5 Two-channel CARD receiver component layout



			<b>CARDIN ELETTRONICA S.p.A.</b> 31020 S.VENDEMIANO (TV) ITALY – VIA RAFFAELLO ,36 TEL: +39-438-401818      FAX: +39-438-401831		
			PROGETTO: <b>RICEVITORE XRADO USA</b>		
NOME: RX SCHEDA 2CH		DATABASE: db2	CODICE: 42797		
VERSIONE: 00	DISEGNATORE: EROS LAVINA		DATA: 27/01/1998		
	APPROVATO DA: MARTINO BOLZAN		DATA: 27/01/1998		

6.10 One and two-channel MINI and CARD receivers PCB component side



6.11 One and two-channel MINI and CARD receivers PCB soldered side

