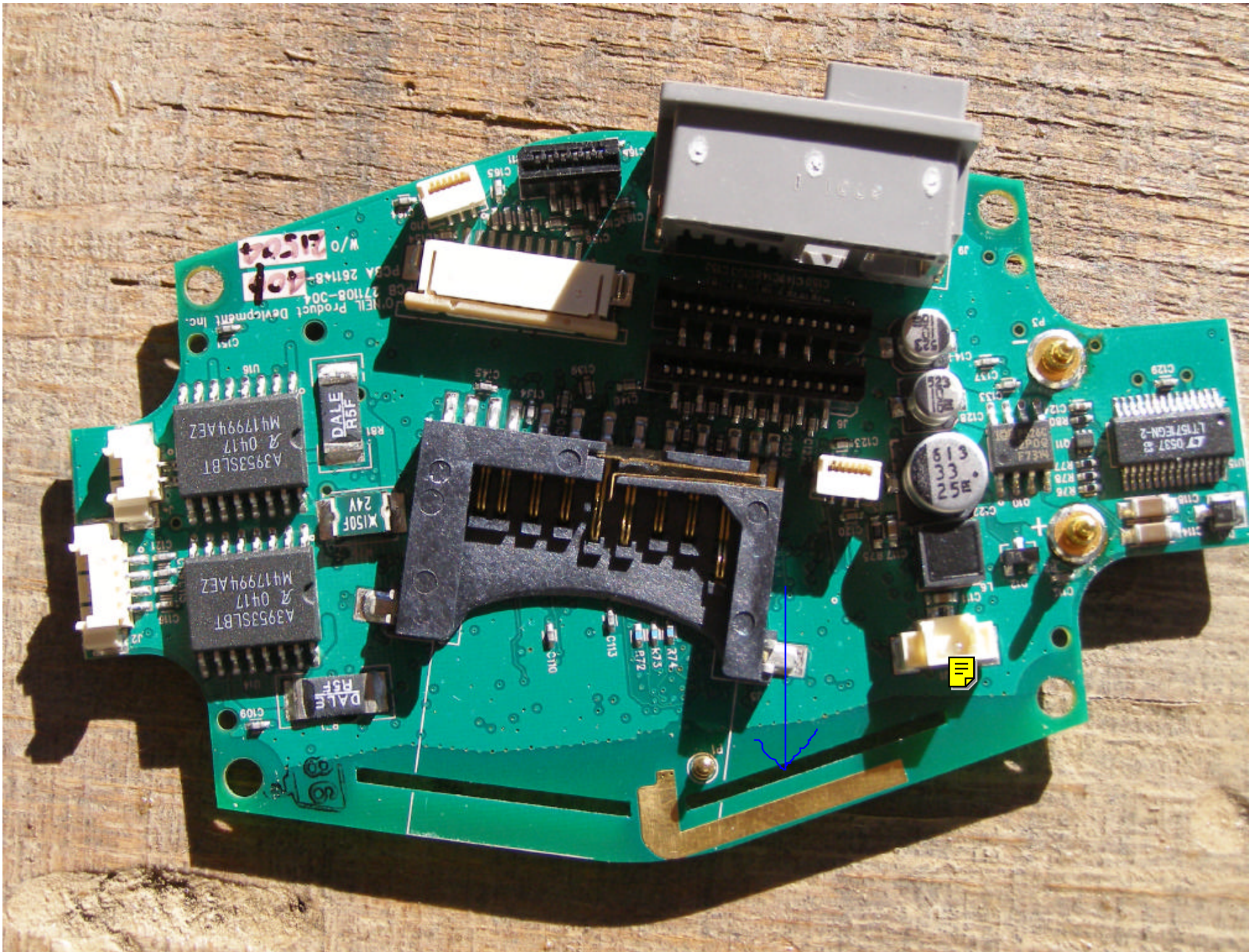


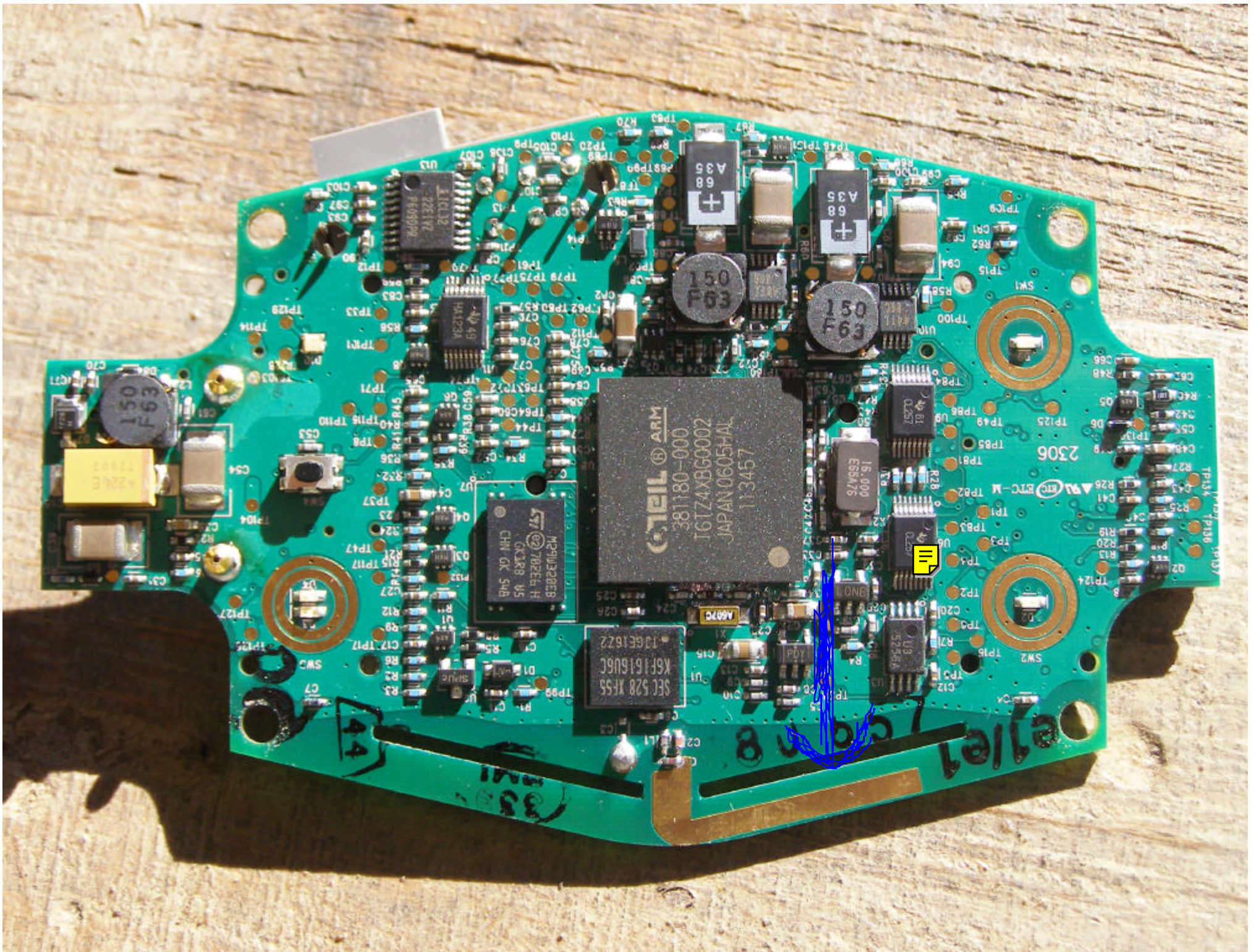
## **ANTENNA INFORMATION**

The antenna LEG-B has a gain of 3 dBi

The antenna LEG-C2 has a gain of 2.4 dBi

The antenna LEG-E has a gain of 0 dBi





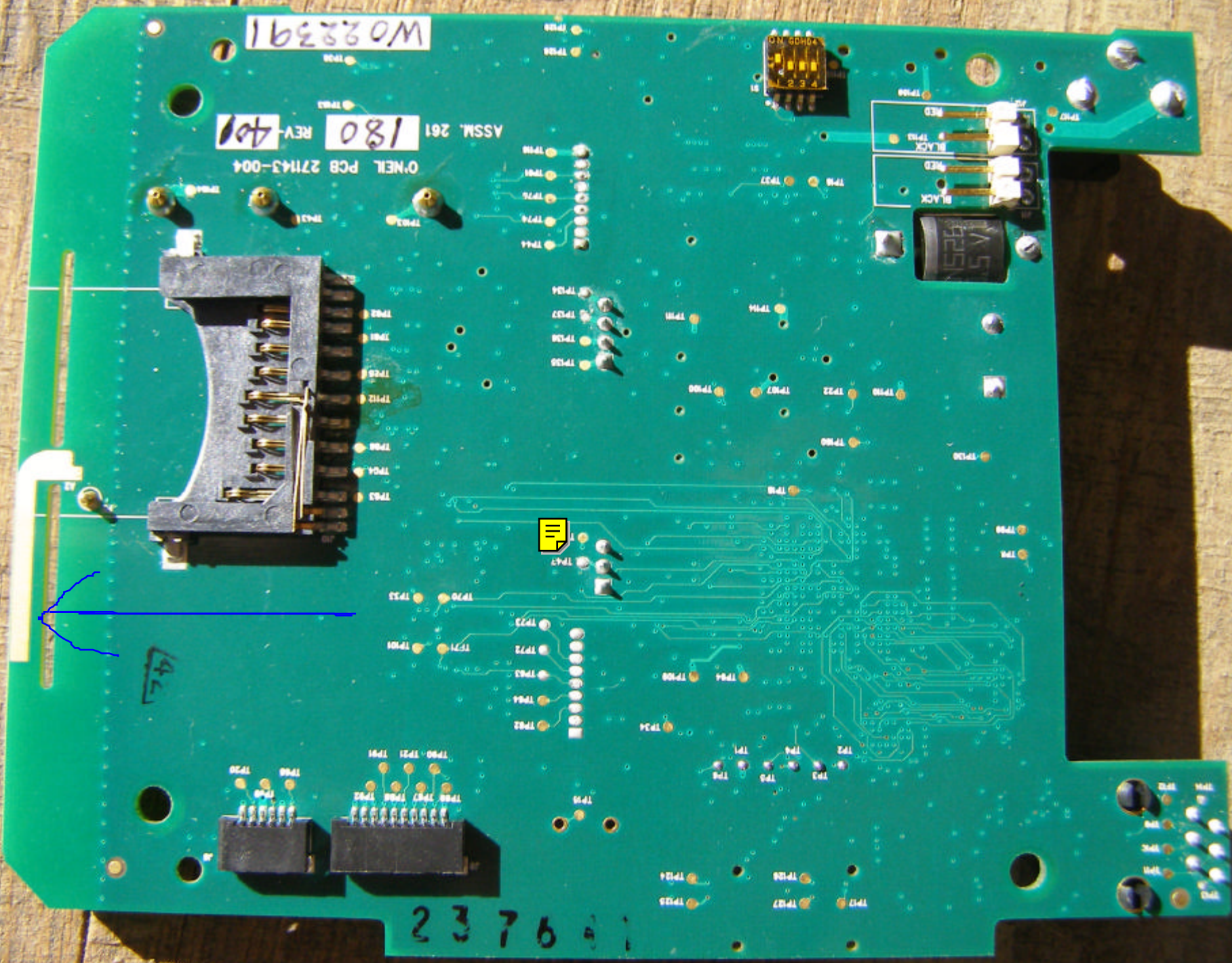
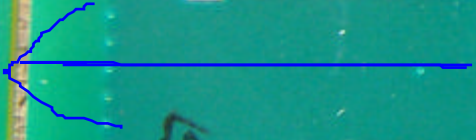
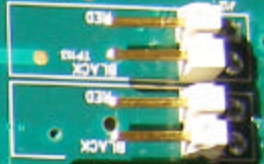
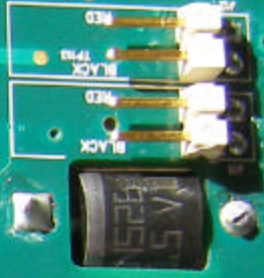
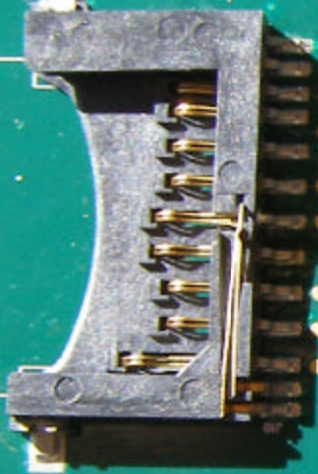
W02391

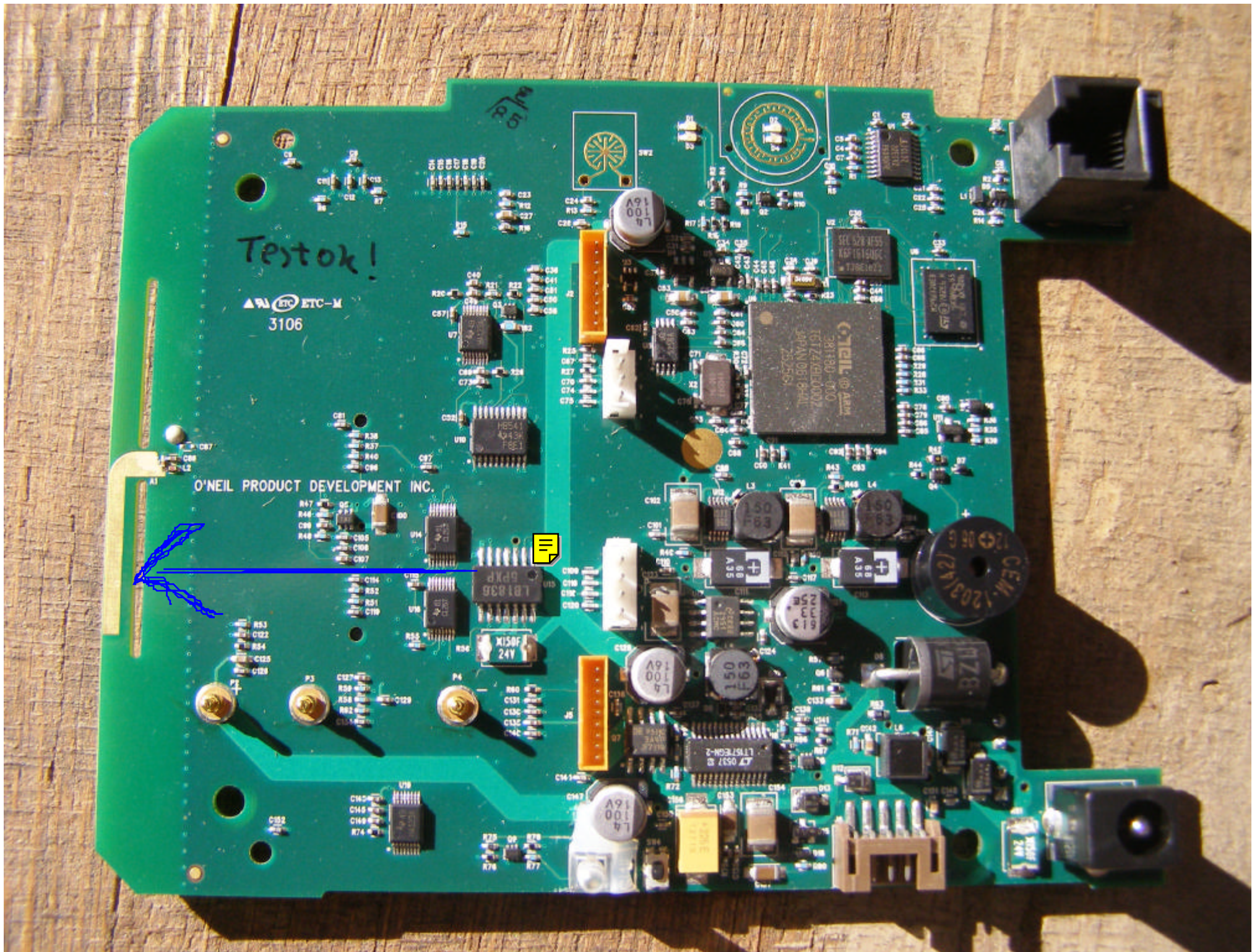
ASSM. 261 180 REV-401

O'NEIL PCB 27143-004

14L

23761



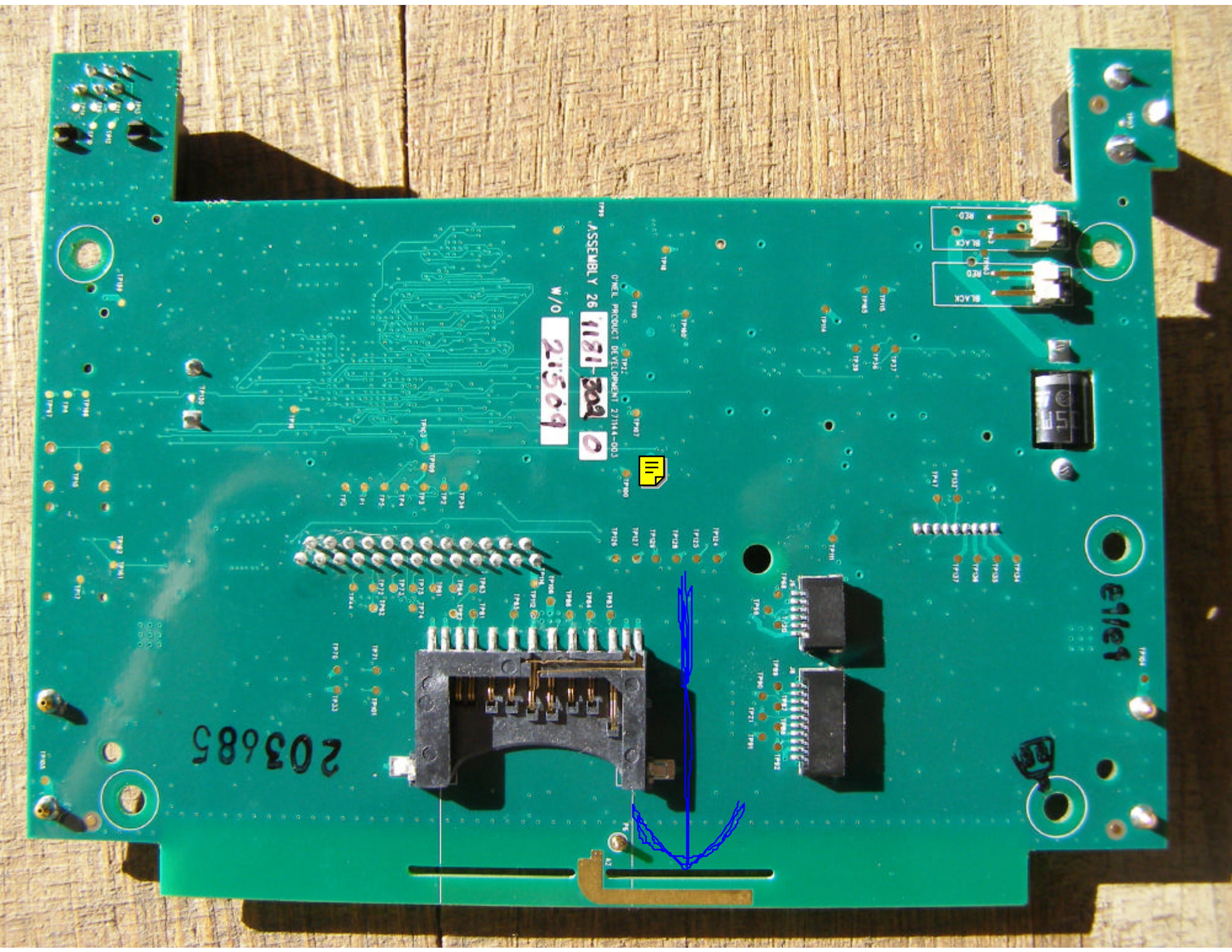


Testok!

ETC ETC-M  
3106

O'NEIL PRODUCT DEVELOPMENT INC.





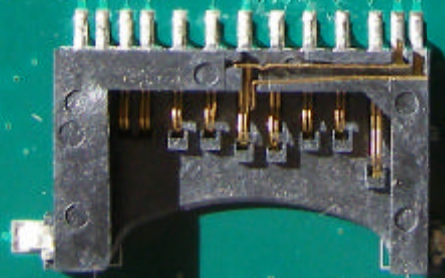
ASSEMBLY 26 1181-309 0  
O'NEIL PRODUCTIONS DE VÉLOCITÉMENT 2/11/84-003  
W/O 21509



203685

elmer

BLACK  
BLACK  
RED  
RED

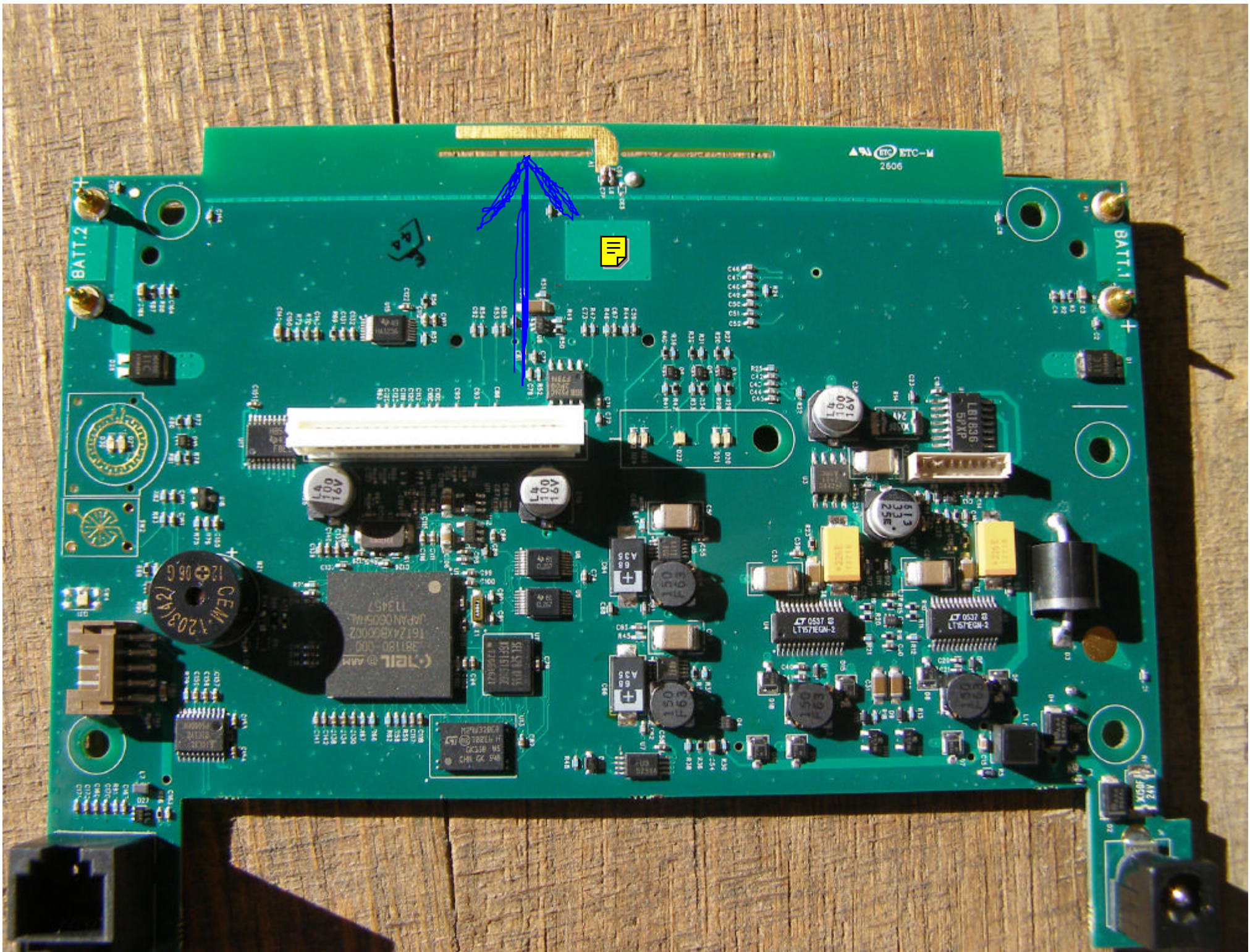


TP354  
TP353  
TP352  
TP351  
TP350  
TP349  
TP348  
TP347

TP314  
TP313  
TP312  
TP311  
TP310  
TP309  
TP308  
TP307  
TP306  
TP305  
TP304  
TP303  
TP302  
TP301  
TP300

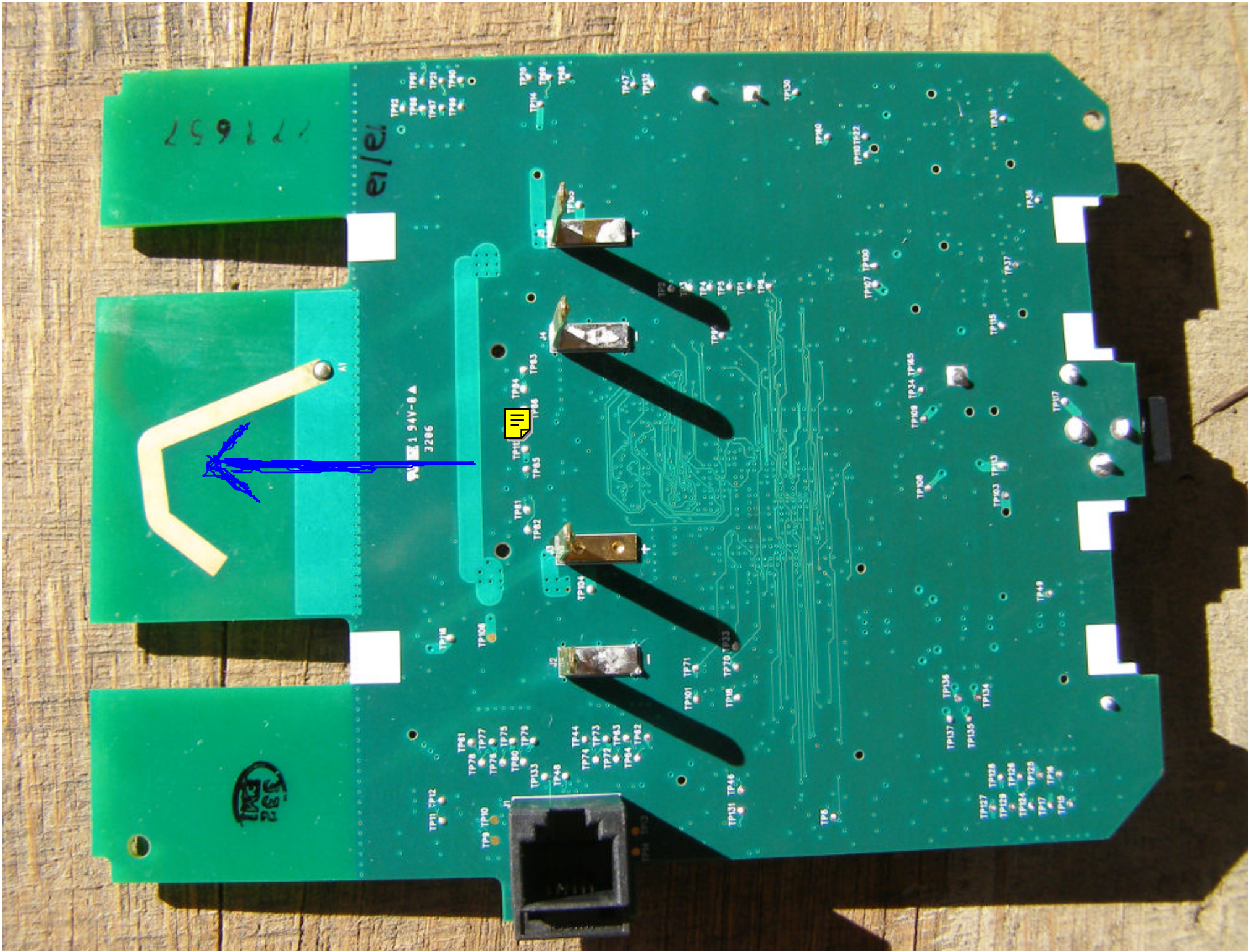
TP299  
TP298  
TP297  
TP296  
TP295  
TP294  
TP293  
TP292  
TP291  
TP290  
TP289  
TP288  
TP287  
TP286  
TP285  
TP284  
TP283  
TP282  
TP281  
TP280

TP144  
TP143  
TP142  
TP141  
TP140  
TP139  
TP138  
TP137  
TP136  
TP135  
TP134  
TP133  
TP132  
TP131  
TP130  
TP129  
TP128  
TP127  
TP126  
TP125  
TP124  
TP123  
TP122  
TP121  
TP120  
TP119  
TP118  
TP117  
TP116  
TP115  
TP114  
TP113  
TP112  
TP111  
TP110  
TP109  
TP108  
TP107  
TP106  
TP105  
TP104  
TP103  
TP102  
TP101  
TP100









177657

e1/e1

1.54V-8A  
3286

TP1 TP12  
TP9 TP10  
TP78 TP77  
TP76 TP75  
TP80 TP79  
TP53  
TP46  
TP44  
TP71 TP73  
TP72 TP63  
TP44 TP62

TP90 TP71  
TP8 TP70 TP33

TP81 TP82  
TP83 TP84  
TP85 TP86  
TP87 TP88  
TP89 TP90

TP63  
TP64  
TP65

TP2  
TP3  
TP4  
TP5  
TP1  
TP6

TP67  
TP68

TP30

TP6

TP51 TP48  
TP49

TP37  
TP38  
TP35

TP27 TP28  
TP29 TP20  
TP26 TP23  
TP17 TP18  
TP16

TP08  
TP09 TP34 TP45

TP07 TP06

TP01 TP52

TP39

TP38

TP35

TP03 TP10

TP49

TP37

TP38

TP39