

The purpose of this document is to record the antenna information for the following family of products

Product Model Names – Cobalt, Crome family of ICD and CRT models	
Single Chamber	Cobalt™ XT VR MRI SureScan™ Cobalt™ VR MRI SureScan™ Crome™ VR MRI SureScan™
Dual Chamber	Cobalt™ XT DR MRI SureScan™ Cobalt™ DR MRI SureScan™ Crome™ DR MRI SureScan™
Triple Chamber	Cobalt™ XT HF Quad CRT-D MRI SureScan™ Cobalt™ XT HF CRT-D MRI SureScan™ Cobalt™ HF Quad CRT-D MRI SureScan™ Cobalt™ HF CRT-D MRI SureScan™ Crome™ HF Quad CRT-D MRI SureScan™ Crome™ HF CRT-D MRI SureScan™

1. General antenna information

Table 1: General antenna information

Telemetry: Inductive	Antenna Type: Integral loop Manufacturer: Medtronic Model number: M957902A001A Connection with transmitter: Proprietary connector Antenna Gain: N/A Implant depth: 4 cm Polarization: N/A
Telemetry: BTLE	Antenna Type: Monopole Manufacturer: Medtronic Model number: M966458A001 Connection with transmitter: Proprietary connector Antenna Gain: -31.86 dBi Implant depth: 4 cm Polarization: Linear

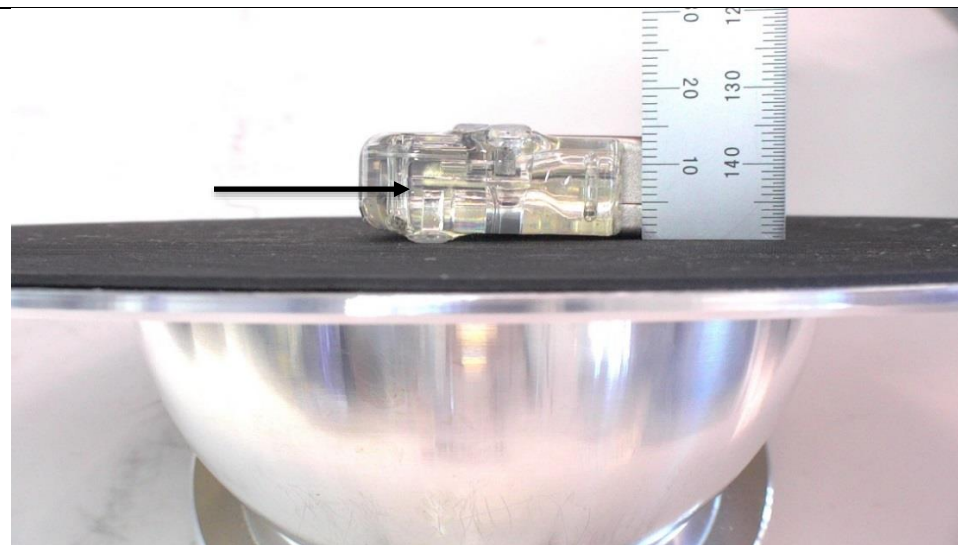
2. Antenna Photos

Antenna identified by pointer

Model Cobalt XT VR MRI SureScan - M966588A001 Antenna (VR DF-1 connector)



Model Cobalt XT VR MRI SureScan – right angle



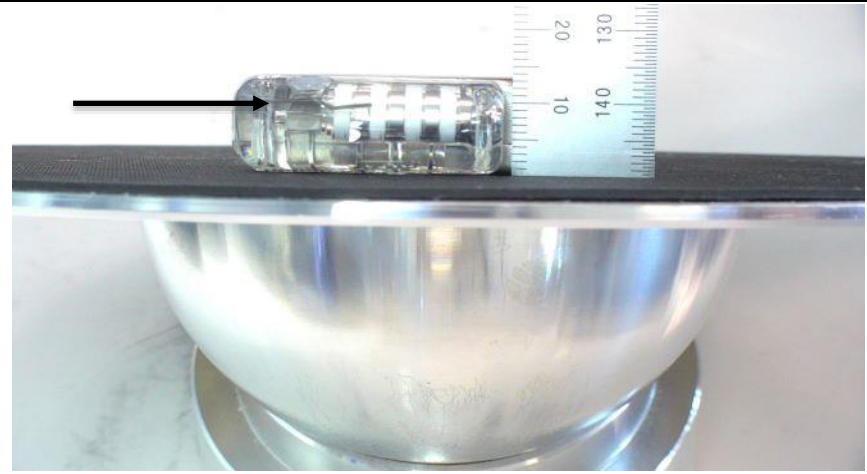
Model Cobalt XT VR MRI SureScan – thickness

Models that use M966588A001 Antenna (VR DF-1 connector)	
Cobalt™ XT VR MRI SureScan™	DVPA2D1
Cobalt™ VR MRI SureScan™	DVPB3D1
Crome™ VR MRI SureScan™	DVPC3D1

Model Cobalt XT VR MRI SureScan - M966636A001 Antenna (VR_DF4 connector)



Model Cobalt XT VR MRI SureScan – right angle



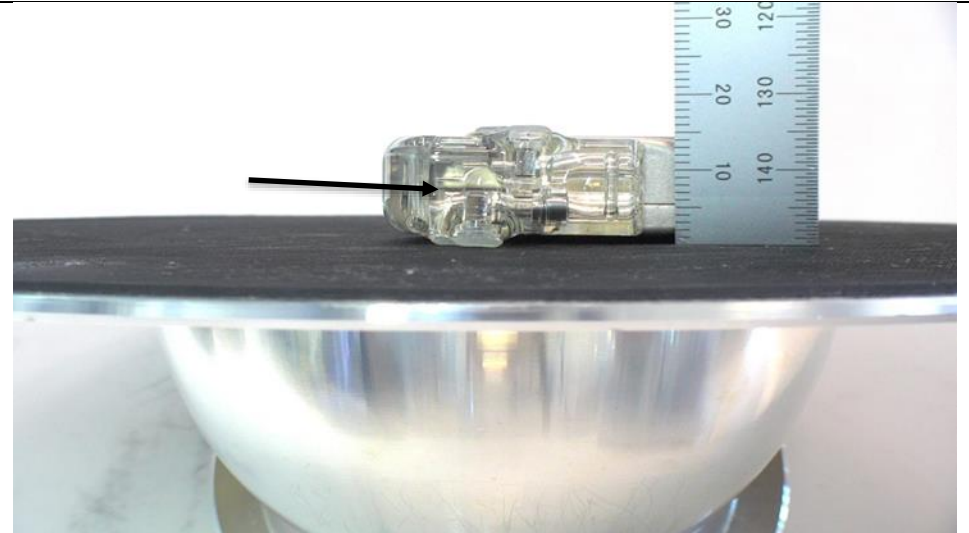
Model Cobalt XT VR MRI SureScan – thickness

Models that use M966636A001 Antenna (VR_DF4 connector)	
Cobalt™ XT VR MRI SureScan™	DVPA2D4
Cobalt™ VR MRI SureScan™	DVPB3D4
Crome™ VR MRI SureScan™	DVPC3D4

Model Cobalt XT DR MRI SureScan M966588A001 Antenna (DR DF-1 connector)



Model Cobalt XT DR MRI SureScan – right angle



Model Cobalt XT DR MRI SureScan - thickness

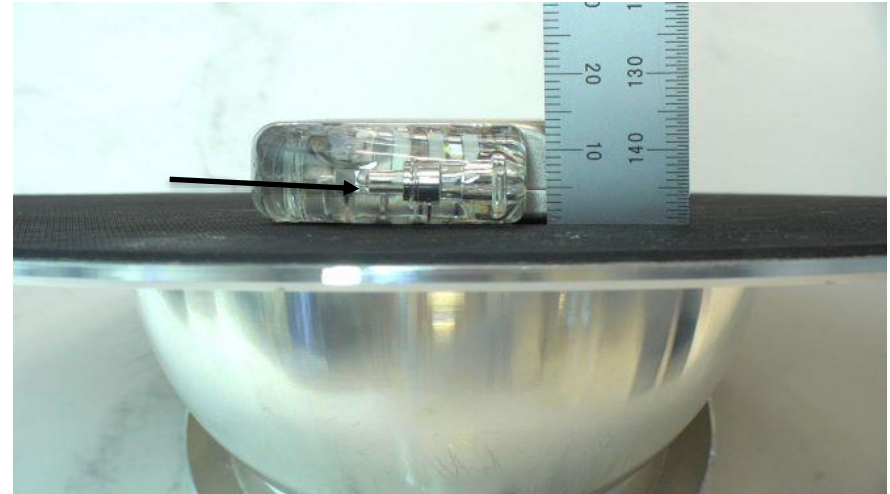
Models that use M966588A001 Antenna (DR DF-1 connector)

Cobalt™ XT DR MRI SureScan™	DDPA2D1
Cobalt™ DR MRI SureScan™	DDPB3D1
Crome™ DR MRI SureScan™	DDPC3D1

Model Cobalt XT DR MRI SureScan M966636A001 Antenna (DR_DF4 connector)



Model Cobalt XT DR MRI SureScan – right angle



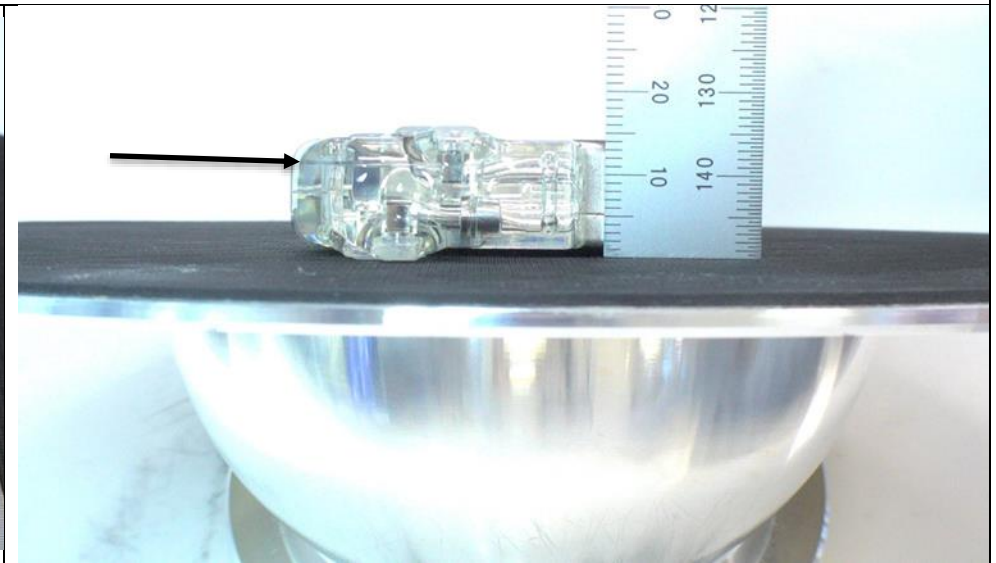
Model Cobalt XT DR MRI SureScan - thickness

Models that use M966636A001 Antenna (DR_DF4 connector)	
Cobalt™ XT DR MRI SureScan™	DDPA2D4
Cobalt™ DR MRI SureScan™	DDPB3D4
Crome™ DR MRI SureScan™	DDPC3D4

Model Cobalt XT HF CRT-D MRI SureScan M966458A001 Antenna (CRT DF-1 connector)



Model Cobalt XT HF CRT-D MRI SureScan – right angle



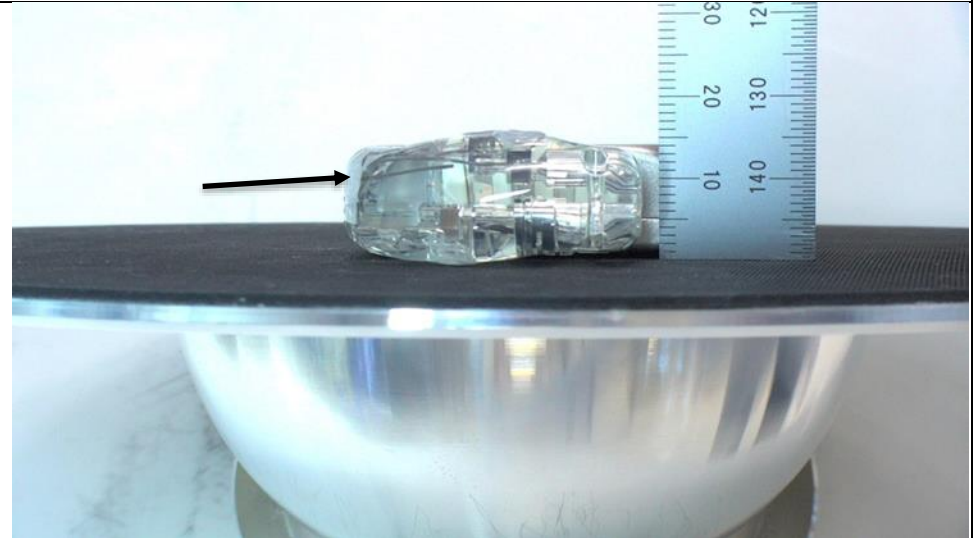
Model Cobalt XT HF CRT-D MRI SureScan - thickness

Models that use M966458A001 Antenna (CRT DF-1 connector)	
Cobalt™ XT HF CRT-D MRI SureScan™	DTPA2D1
Cobalt™ HF CRT-D MRI SureScan™	DTPB2D1
Crome™ HF CRT-D MRI SureScan™	DTPC2D1

Model Cobalt XT HF Quad CRT-D MRI SureScan M966462A001 (QP_DF-1 connector)



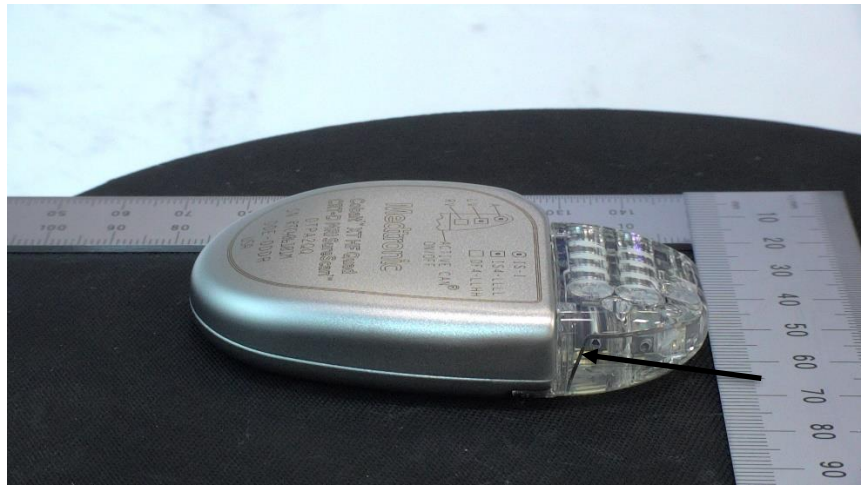
Model Cobalt XT HF Quad CRT-D MRI SureScan – right angle



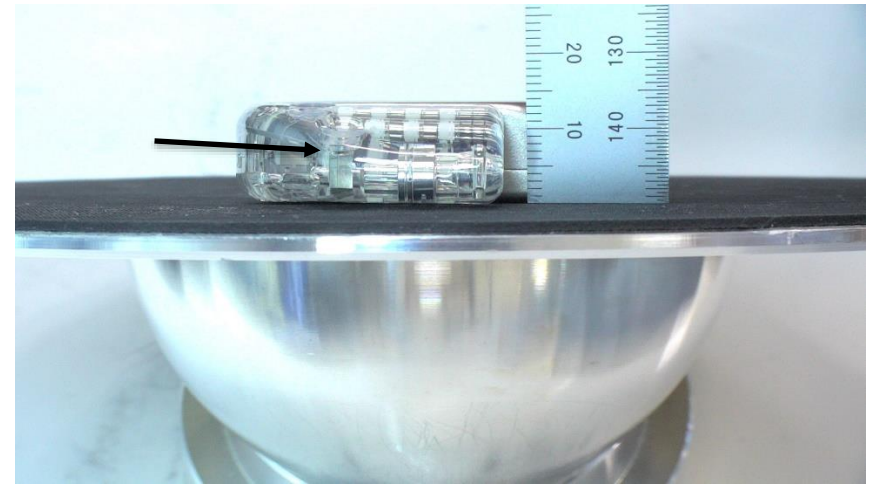
Model Cobalt XT HF Quad CRT-D MRI SureScan - thickness

Models that use M966462A001 Antenna (QP_DF-1 connector)	
Cobalt™ XT HF Quad CRT-D MRI SureScan™	DTPA2Q1
Cobalt™ HF Quad CRT-D MRI SureScan™	DTPB2Q1
Crome™ HF Quad CRT-D MRI SureScan™	DTPC2Q1

Model Cobalt XT HF Quad CRT-D MRI SureScan M964248A001 (QP_DF4 connector)

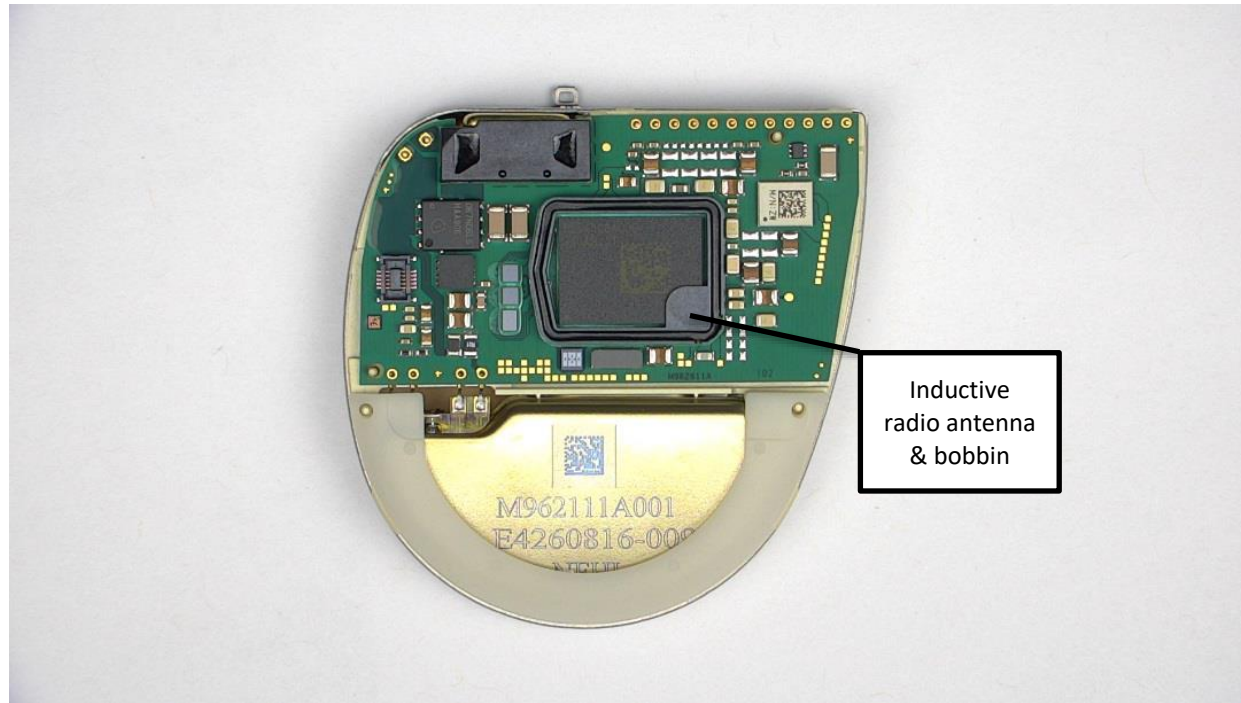


Model Cobalt XT HF Quad CRT-D MRI SureScan – right angle



Model Cobalt XT HF Quad CRT-D MRI SureScan - thickness

Models that use M964248A001 Antenna (QP_DF4 connector)	
Cobalt™ XT HF Quad CRT-D MRI SureScan™	DTPA2QQ
Cobalt™ HF Quad CRT-D MRI SureScan™	DTPB2QQ
Crome™ HF Quad CRT-D MRI SureScan™	DTPC2QQ



M957902A001 – Inductive Antenna