

The purpose of this document is to record the antenna information for the products identified below.

Products
LINQ II

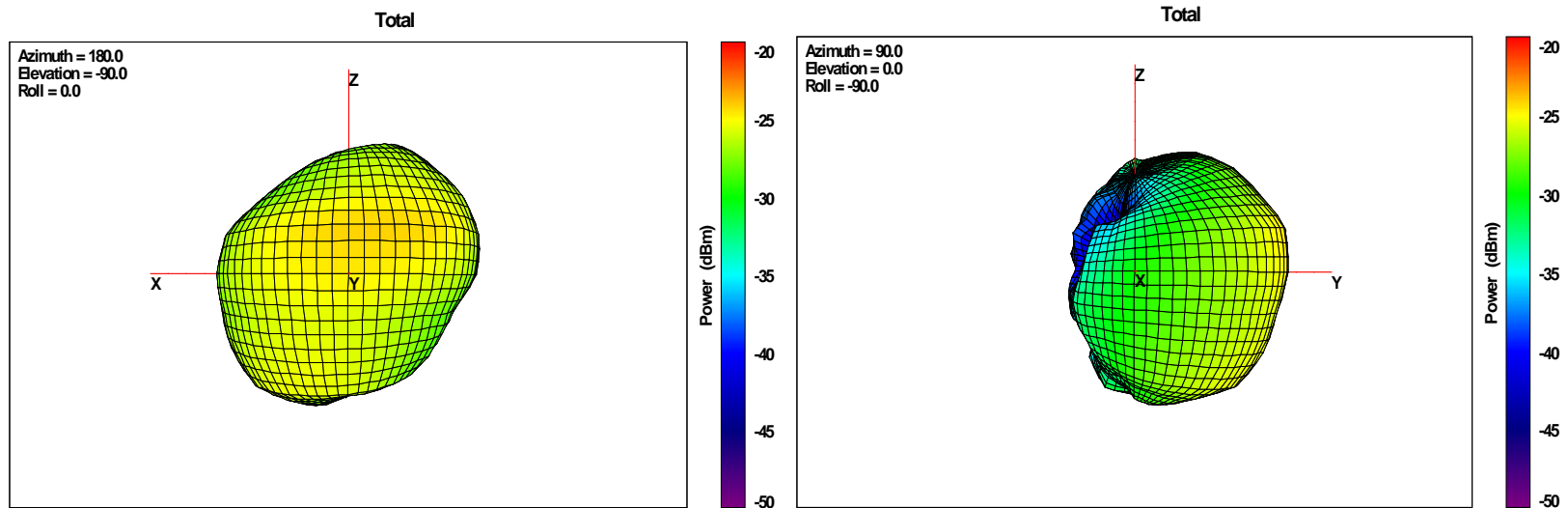
### 1. General antenna information

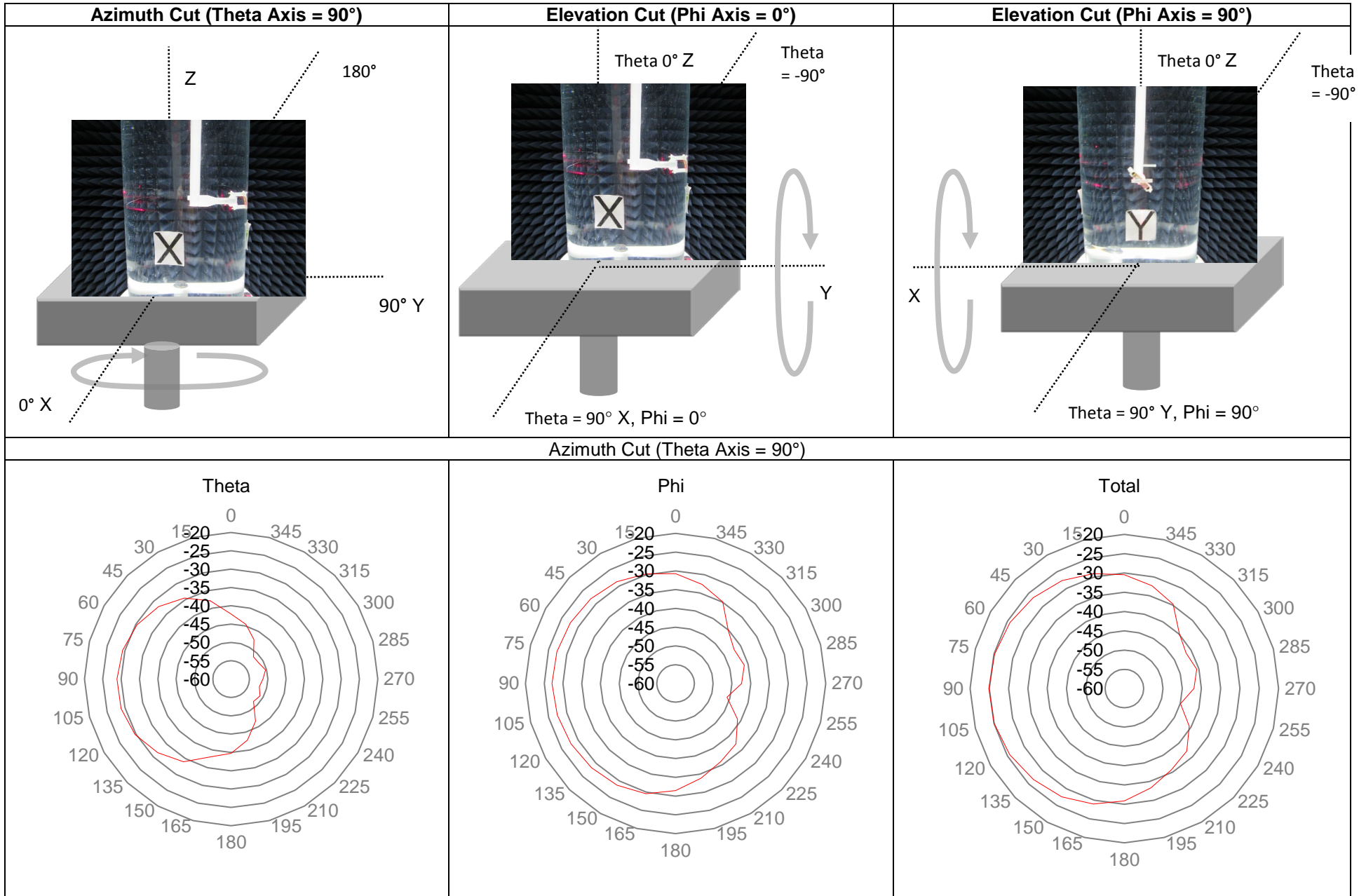
Table 1: General antenna information

Telemetry: BTLE	Antenna Type:	Magnetic Dipole
	Manufacturer:	Medtronic
	Model number:	M969045A
	Connection with transmitter:	Integrated
	Antenna Gain:	-34 dBi (open air)
	Antenna Gain:	-22.0 dBi (1.4 cm implant depth in 3g/L saline solution)
	Implant depth:	1.4 cm
	Polarization:	Linear

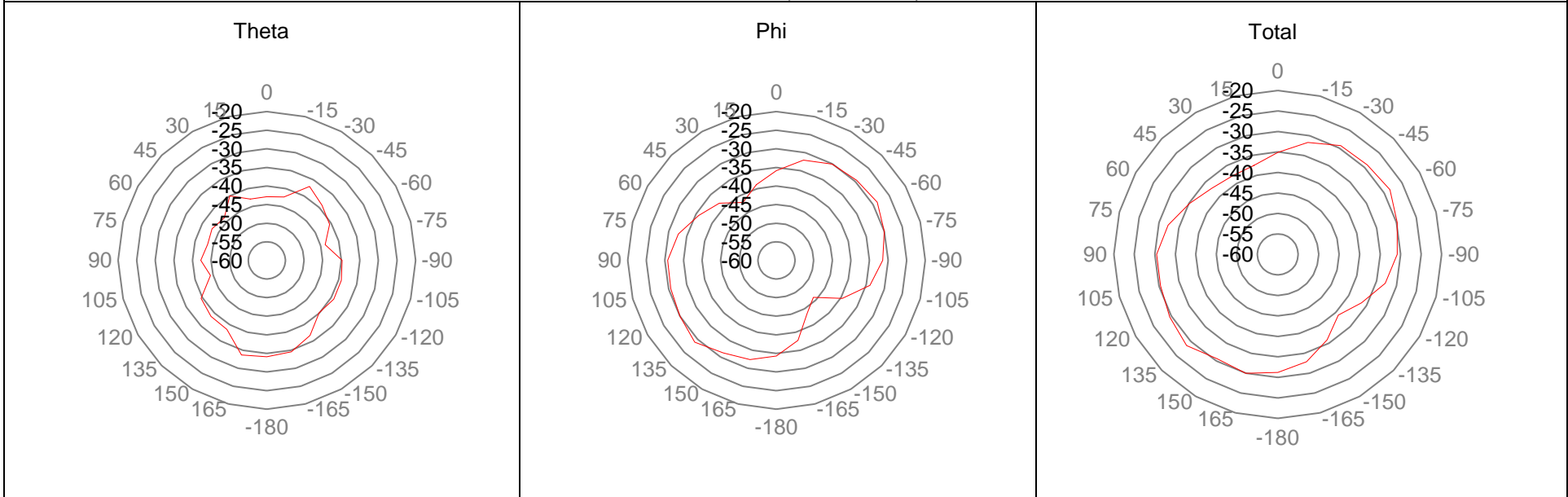
### 2. Antenna plots

Source: MDT2318888

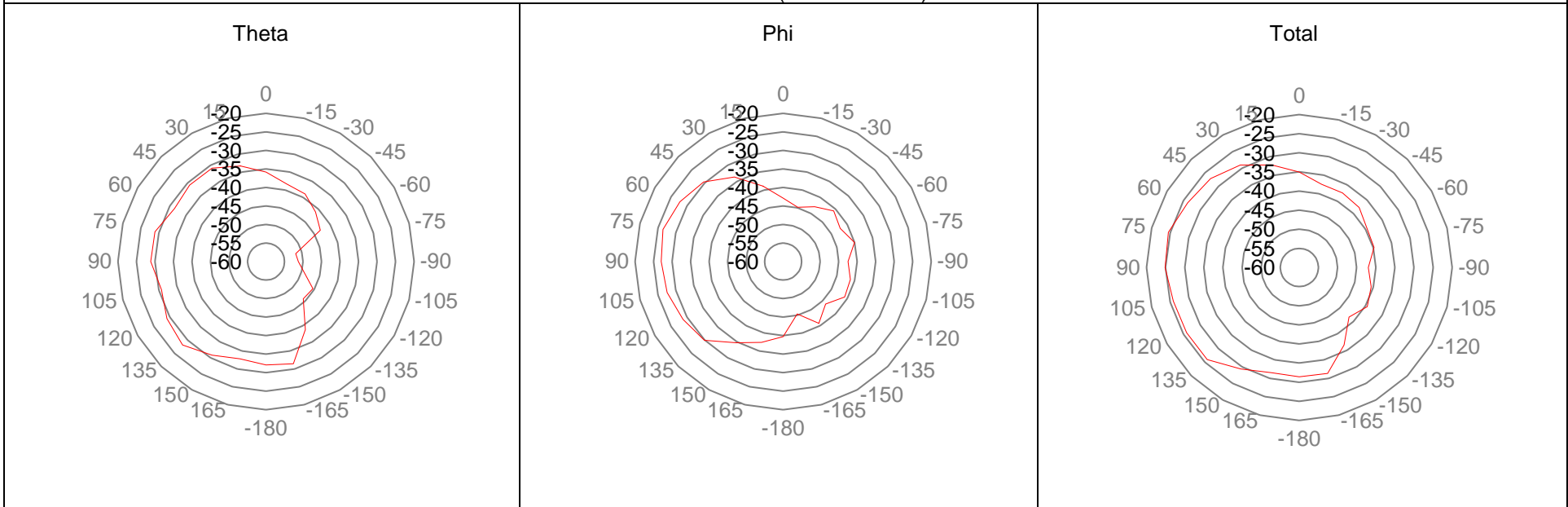




Elevation Cut (Phi Axis = 0°)

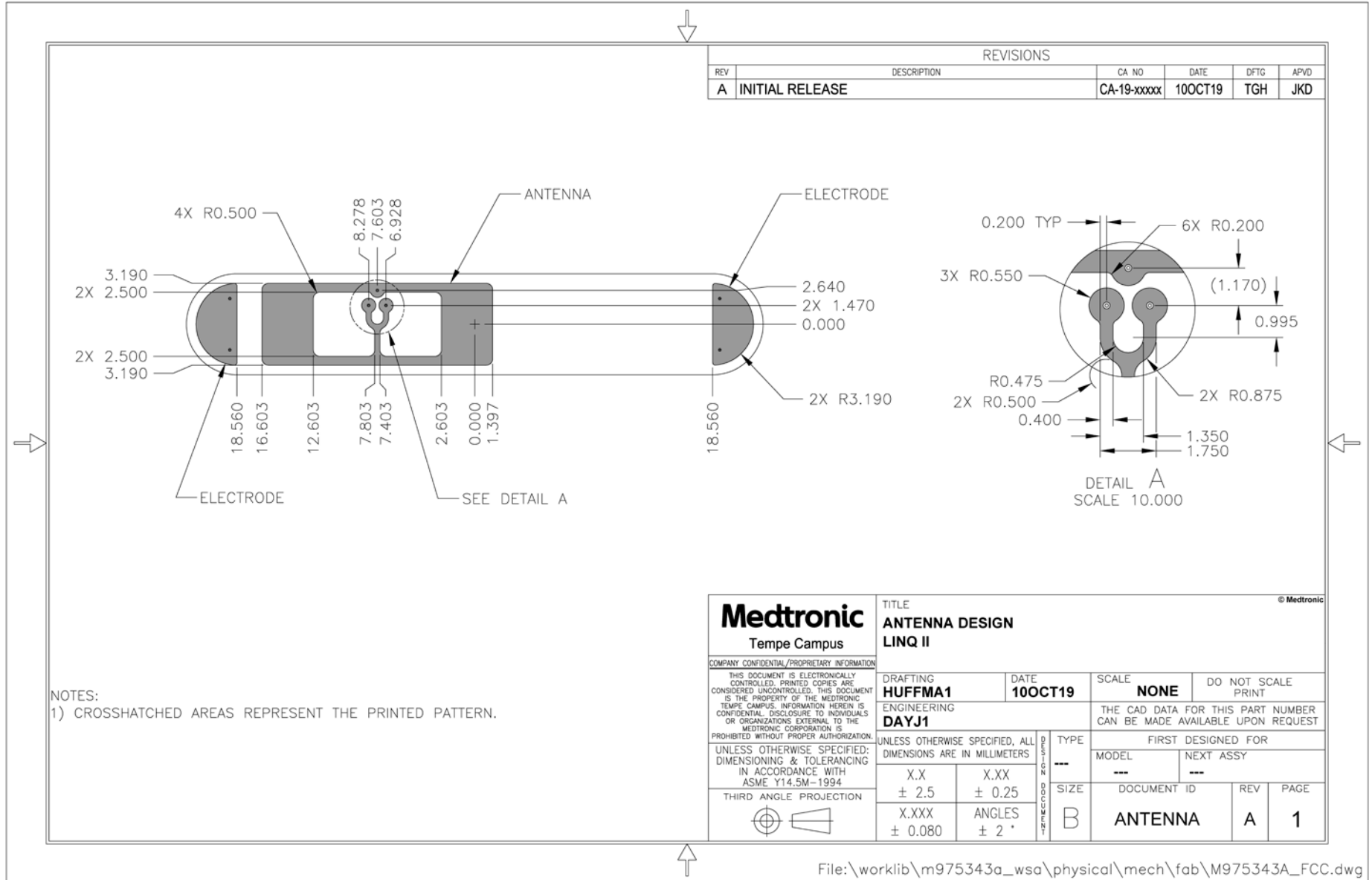


Elevation Cut (Phi Axis = 90°)



### 3. Antenna Assembly Drawing

Source: A85514 rev. D



File: \worklib\m975343a\_wsa\physical\mech\fab\M975343A\_FCC.dwg

**End of Document**