



Figure 1: U3 Internals with main PCB removed - left side



Figure 2 U3 Internals with main PCB removed - right side



Figure 3: Main PCB assembly - bottom view

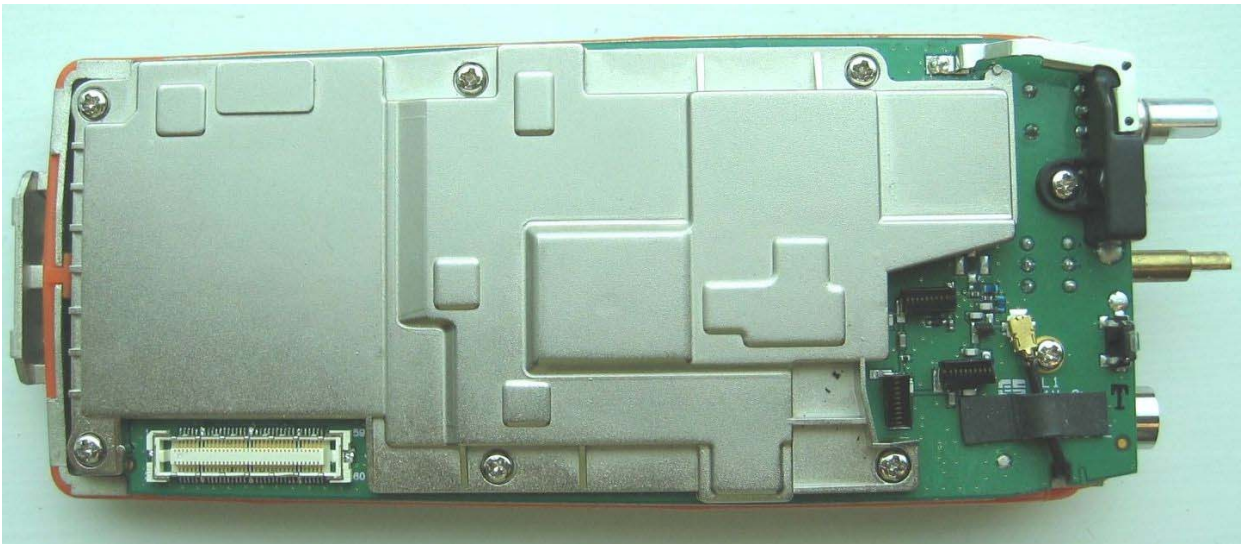


Figure 4: Main PCB assembly - top view

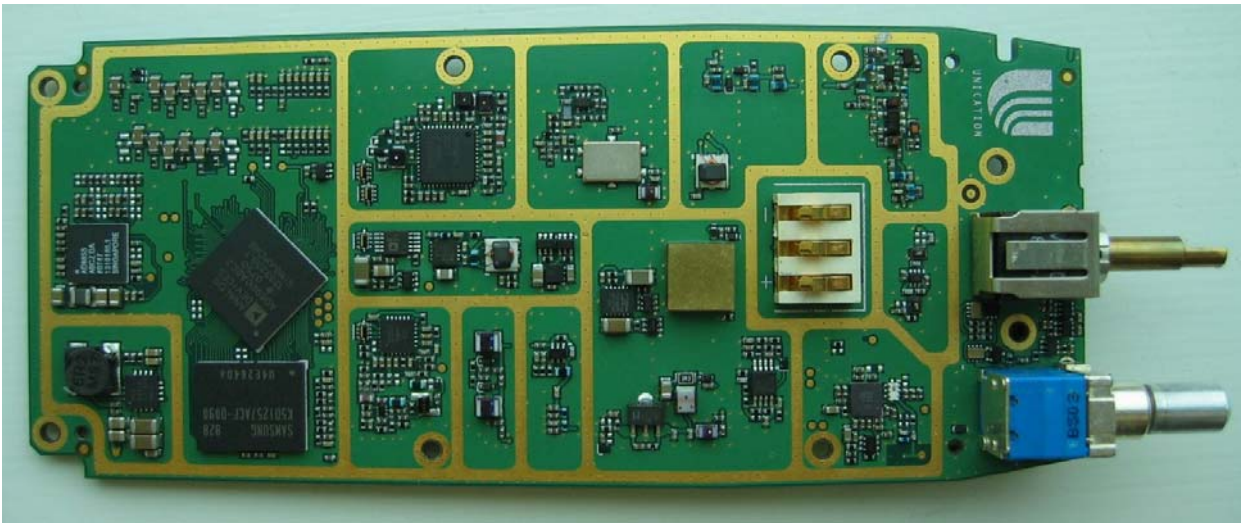


Figure 5: Main PCB - top side

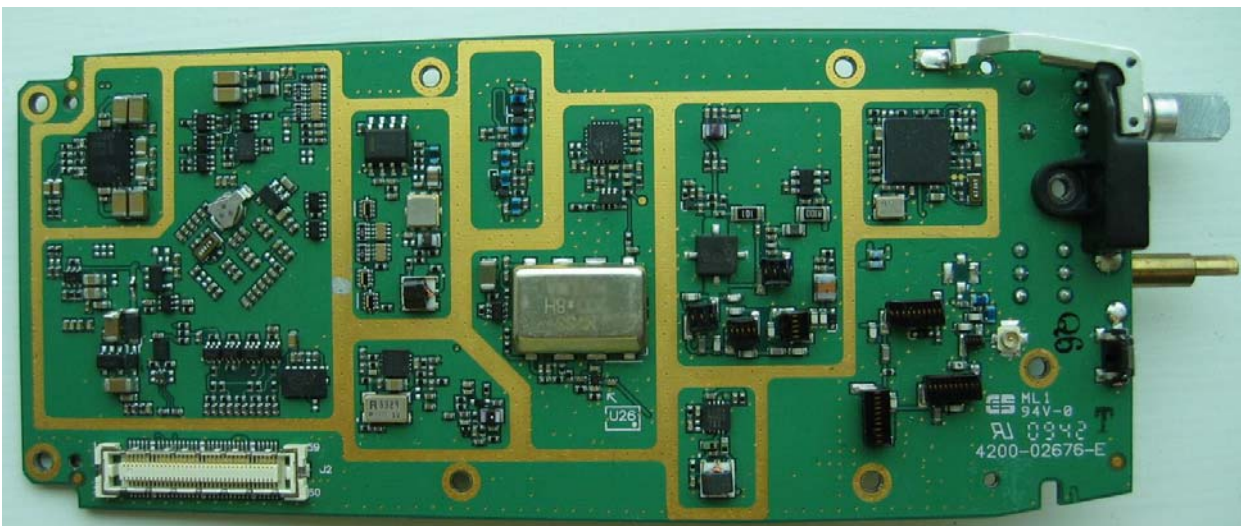


Figure 6: Main PCB - bottom side

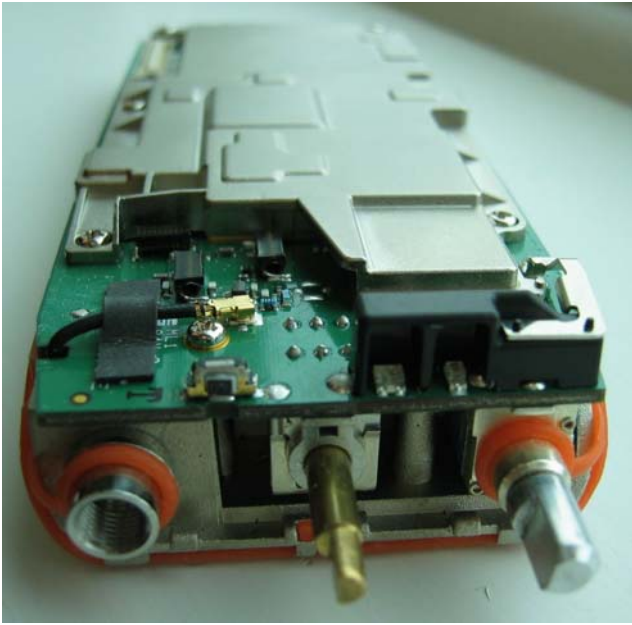


Figure 7: Main PCB assembly - edge view

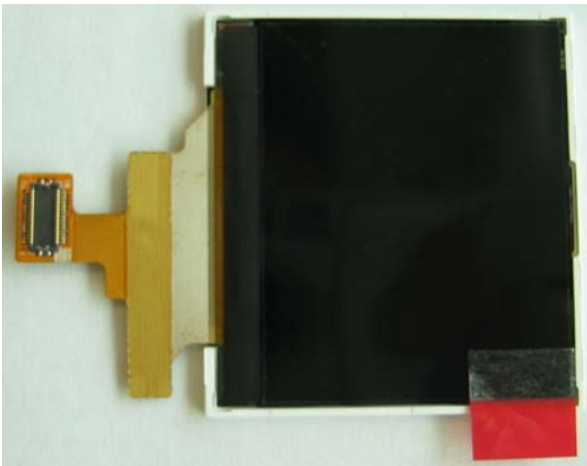


Figure 8: LCD front

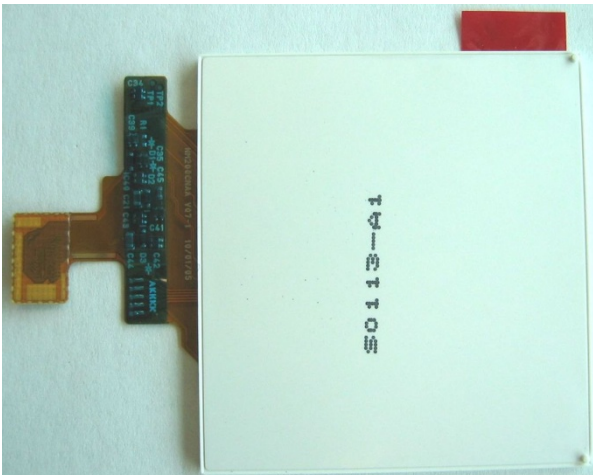


Figure 9: LCD back

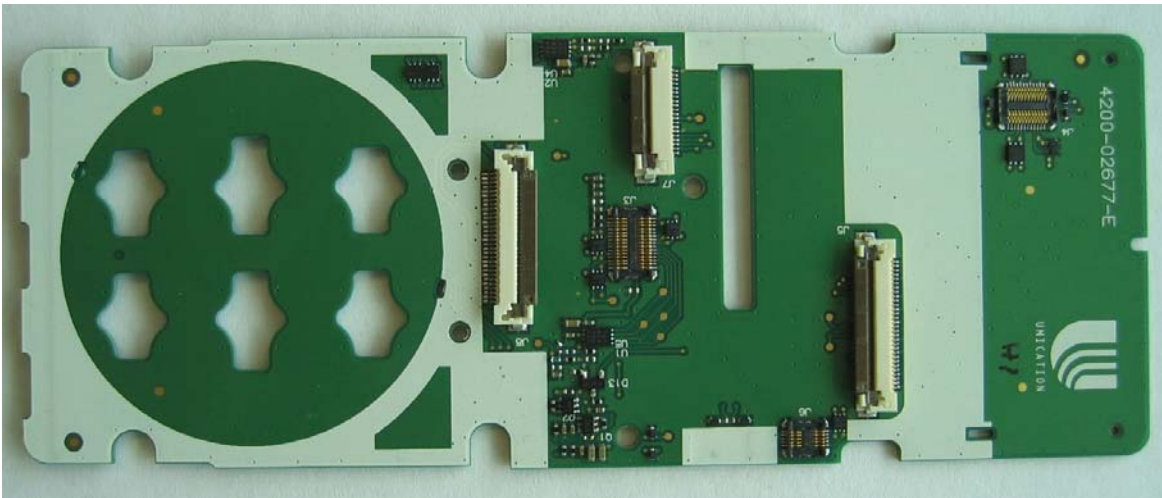


Figure 10: Keyboard PCB bottom

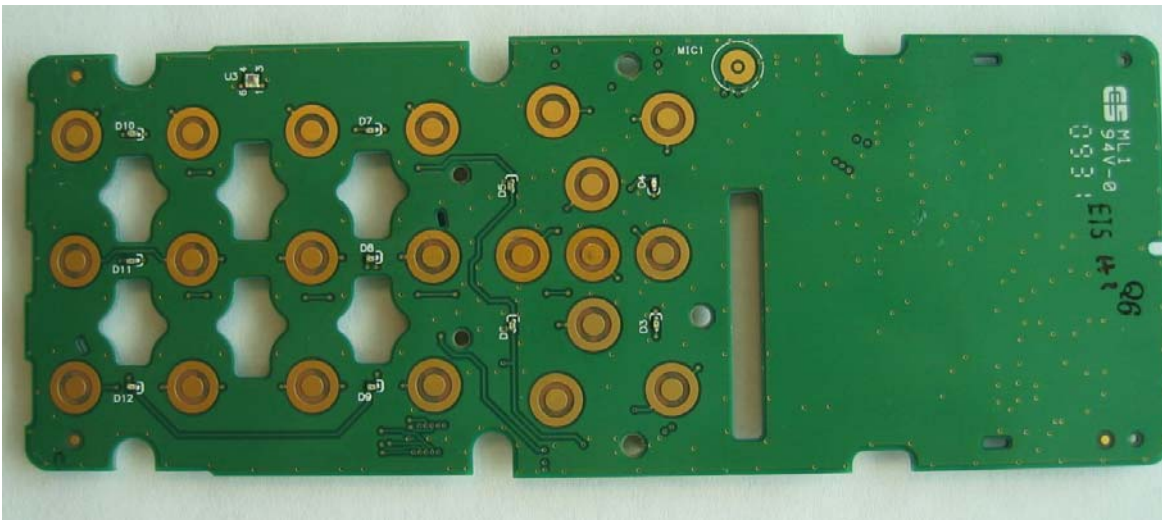


Figure 11: Keyboard PCB top

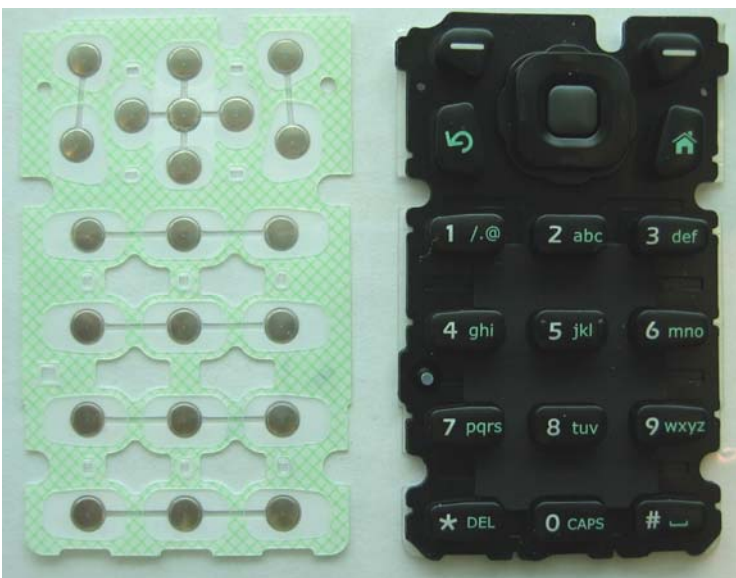


Figure 12: Keypad



Figure 13: Cover Shield bottom

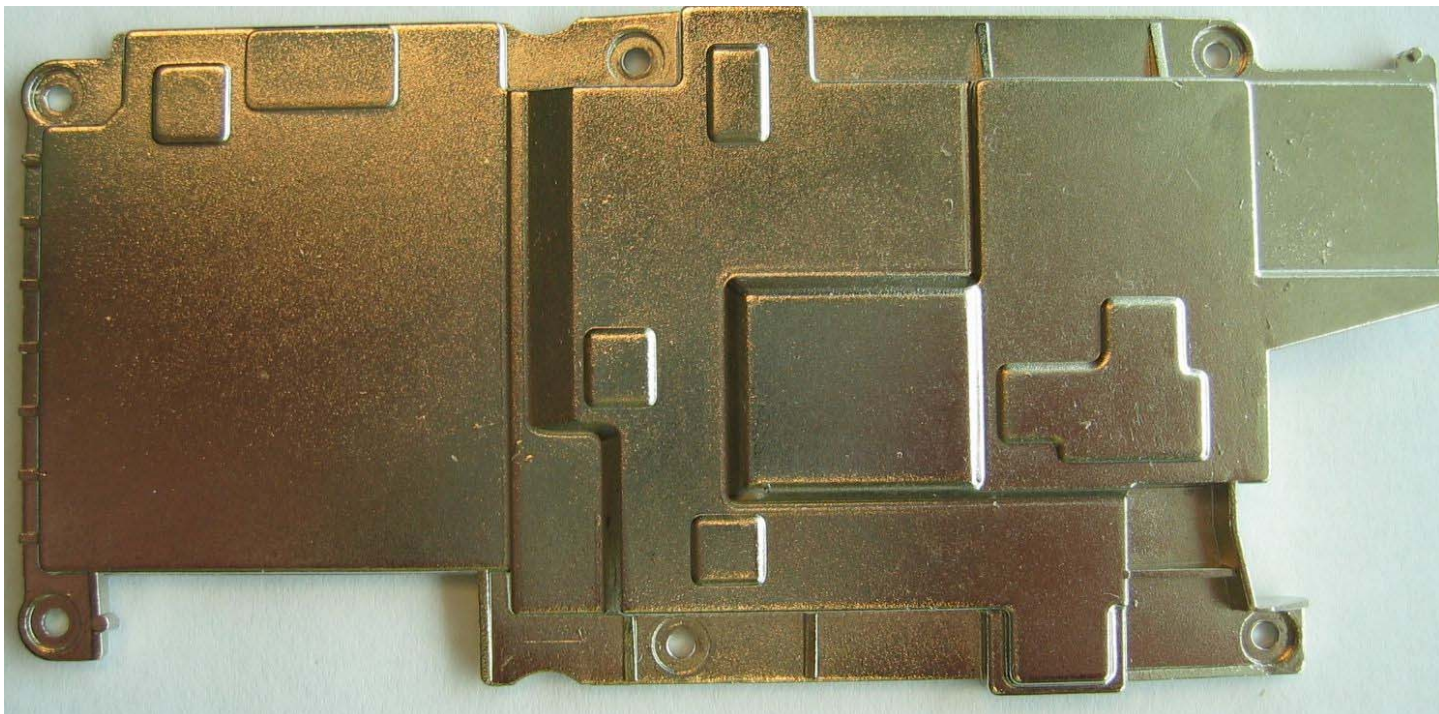


Figure 14: Cover shield top

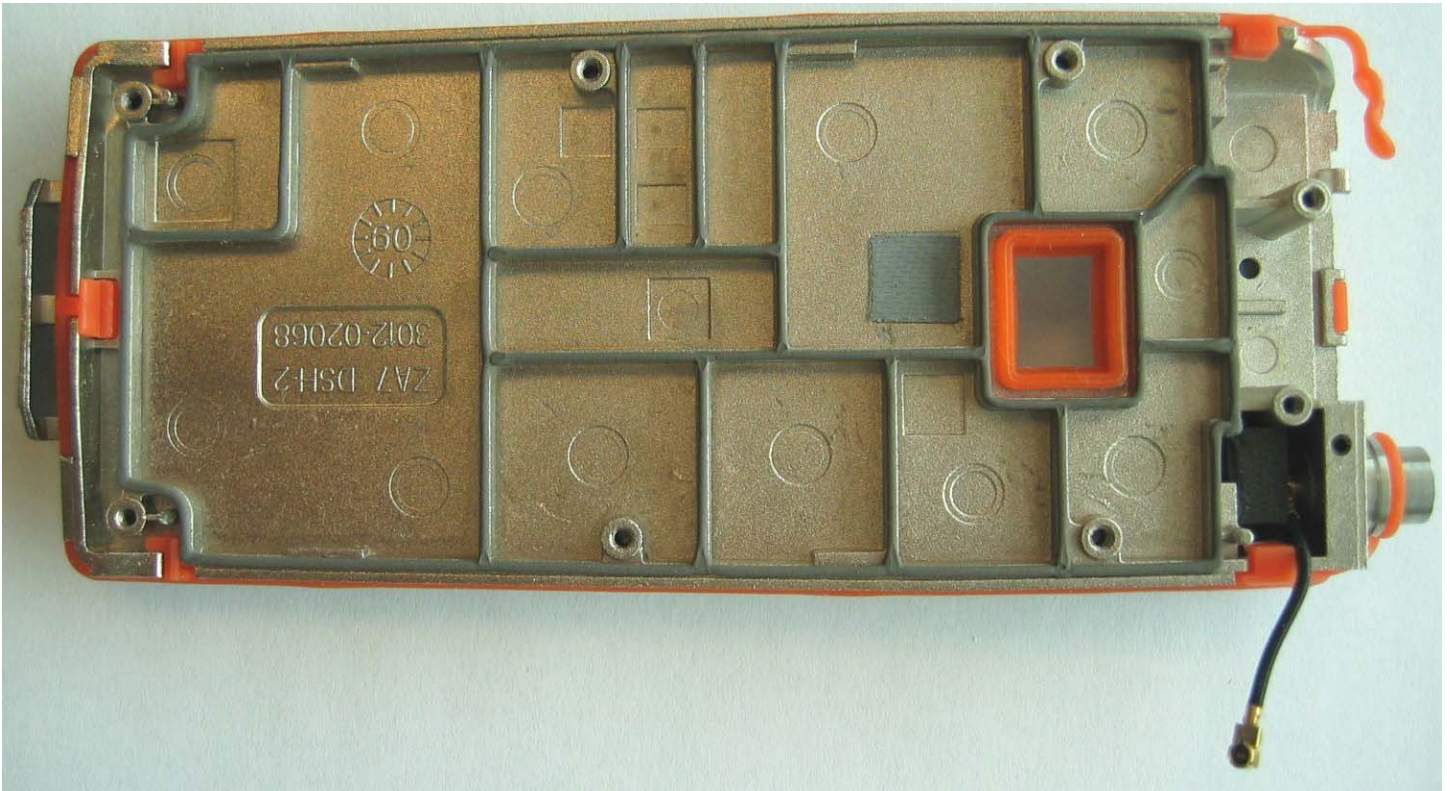


Figure 15: Main chassis shield bottom



Figure 16: Main chassis shield top



Figure 17: Keyboard interconnect FPC bottom

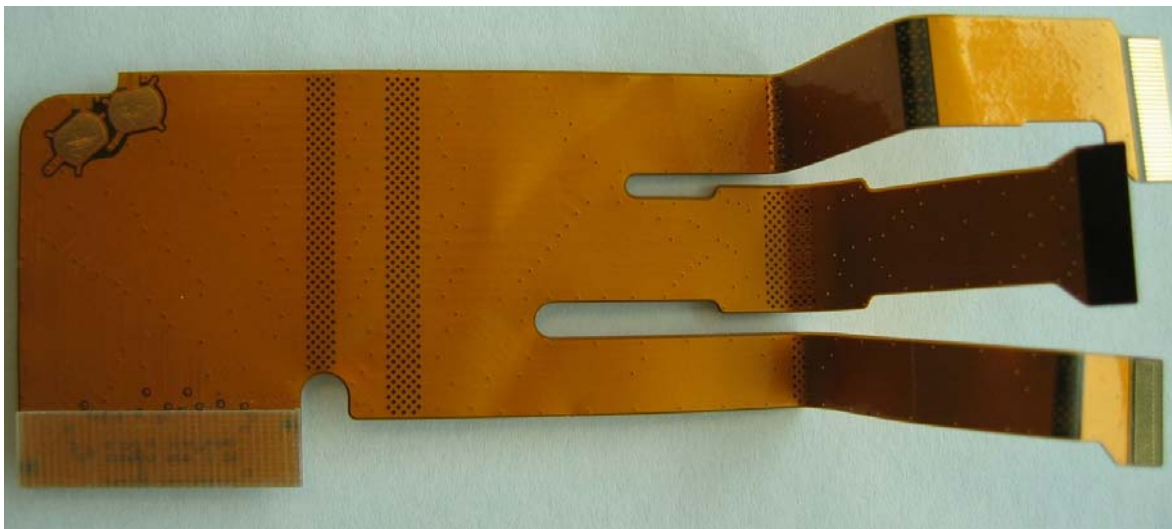


Figure 18: Keyboard interconnect FPC top



Figure 19: Plastic housing with Accessory FPC and PTT FPC