

Figure 1: U3 Internals with main PCB removed - left side



Figure 2: U3 Internals with main PCB removed - right side



Figure 3: Main PCB assembly - bottom view

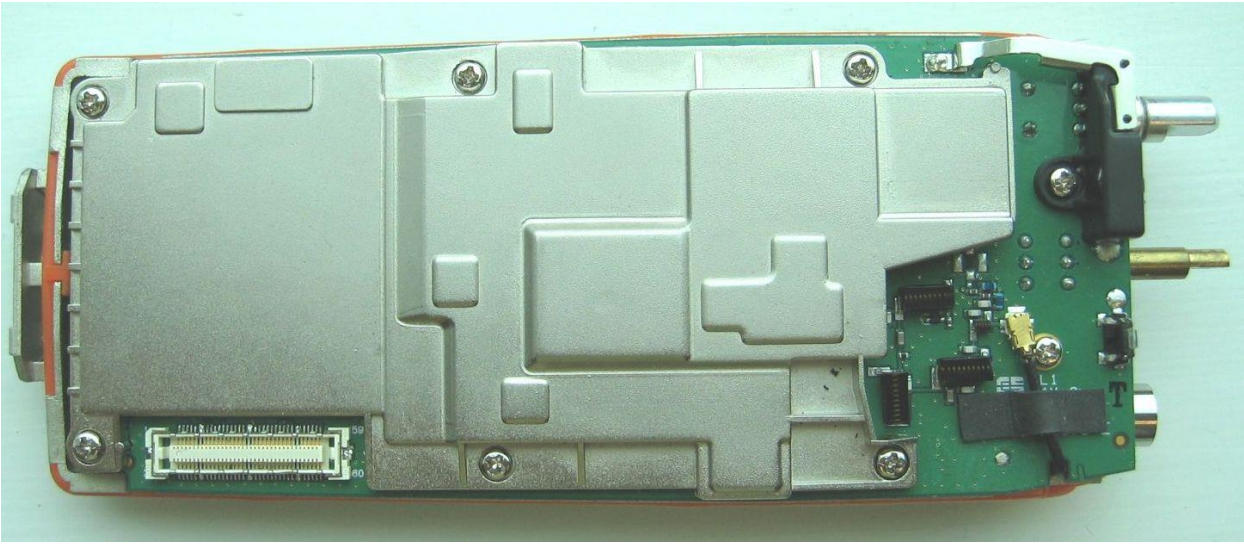


Figure 4: Main PCB assembly - top view

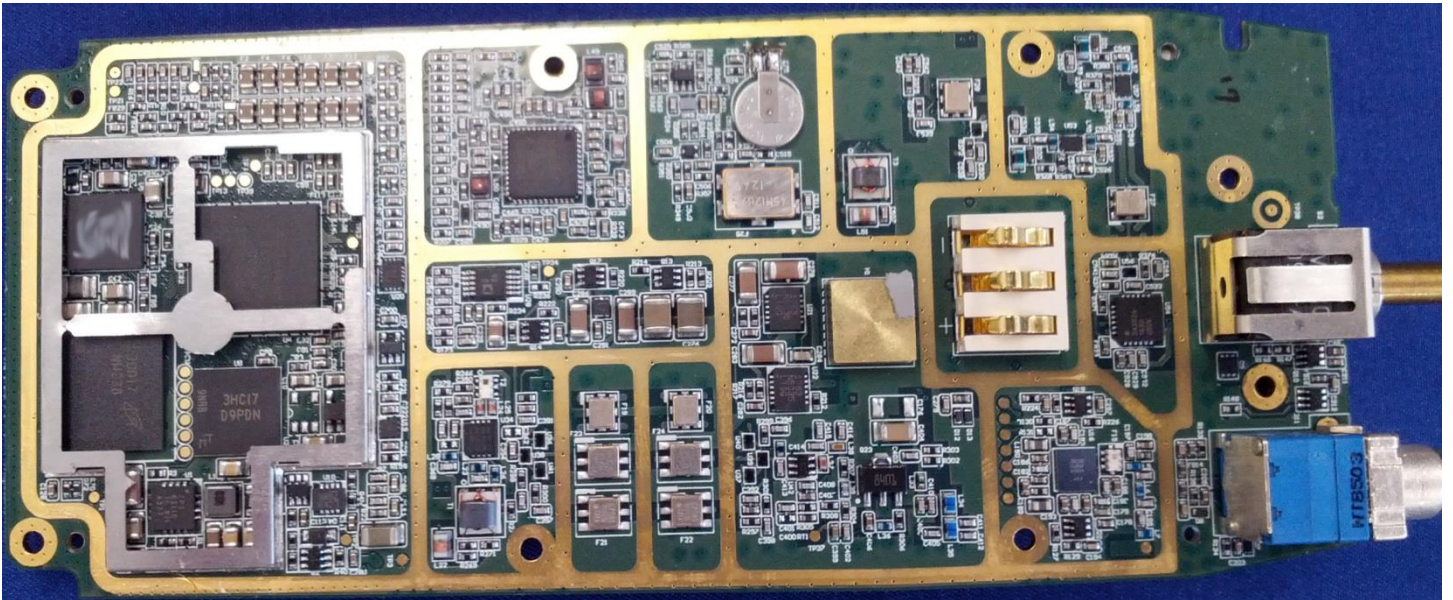


Figure 5: Main PCB - top view



Figure 6: Main PCB - Logic Shield



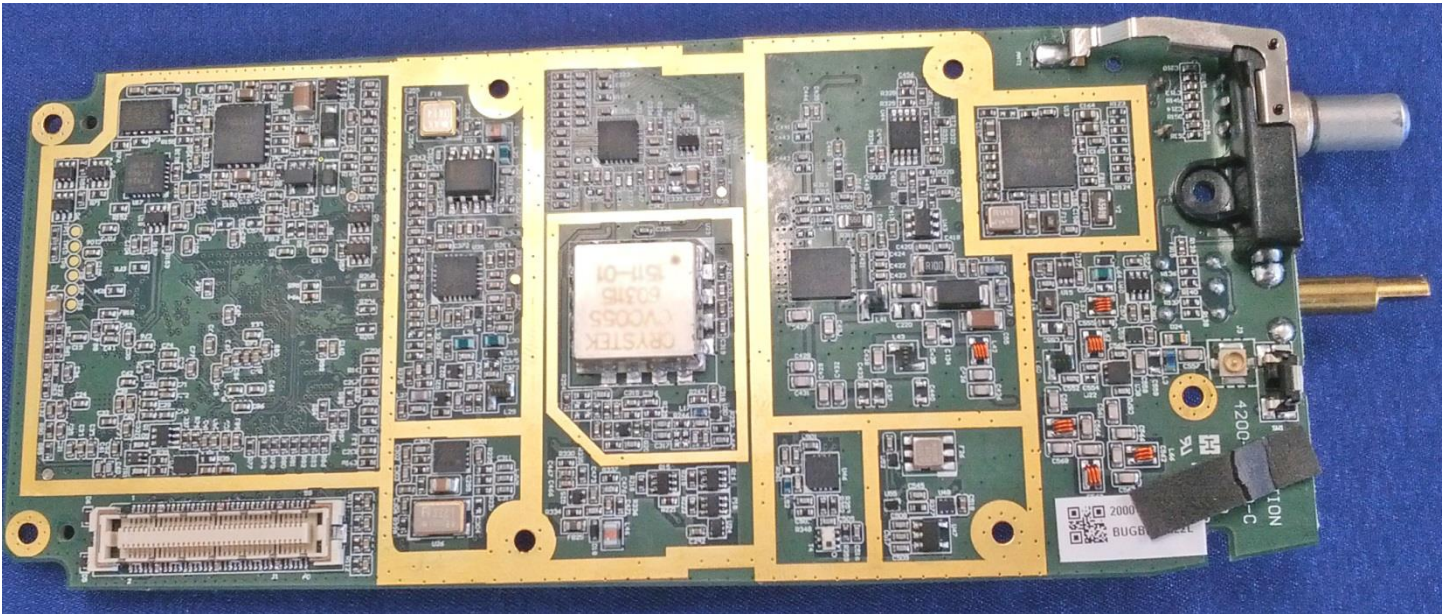


Figure 7: Main PCB - bottom side

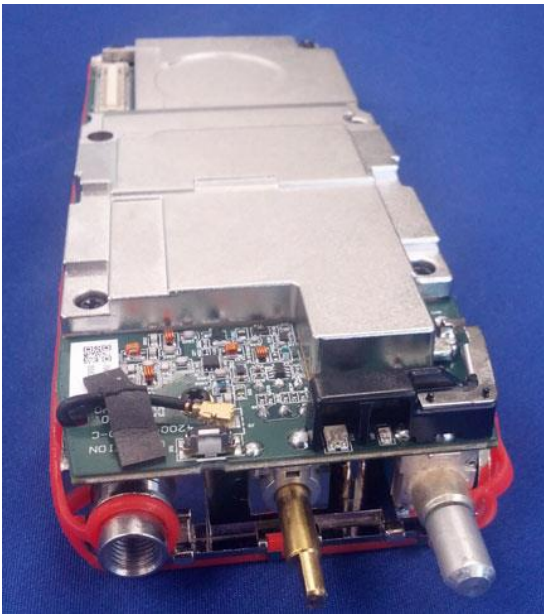


Figure 8: Main PCB assembly - edge view

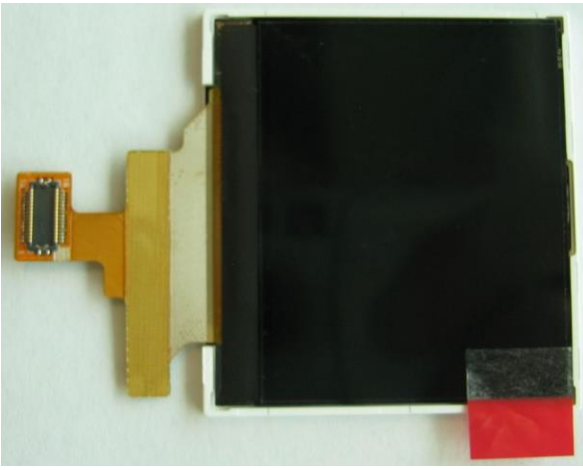


Figure 9: LCD front

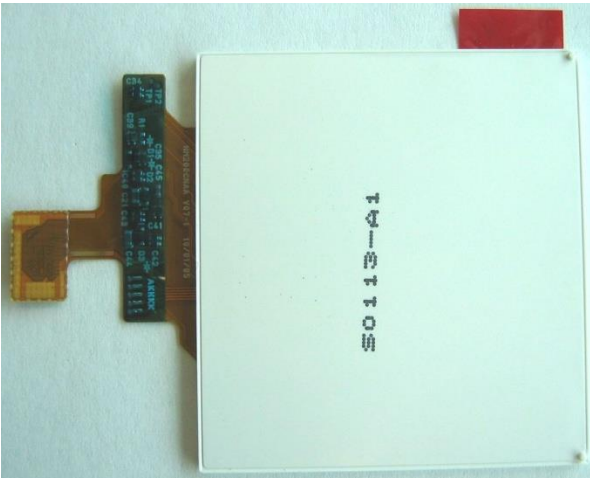


Figure 10: LCD back



Figure 11: LCD Shield



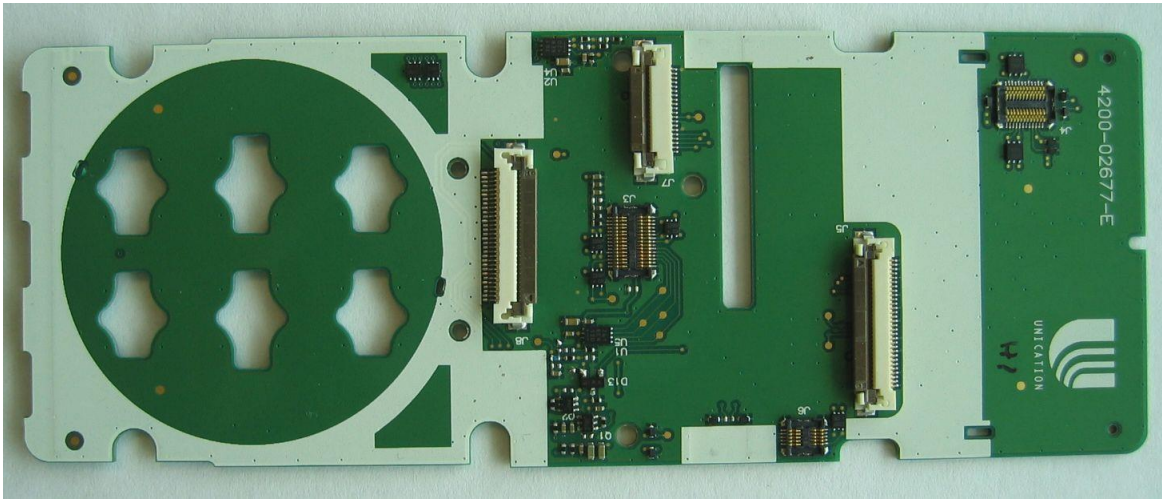


Figure 11: Keyboard PCB bottom



Figure 12: Keyboard PCB top

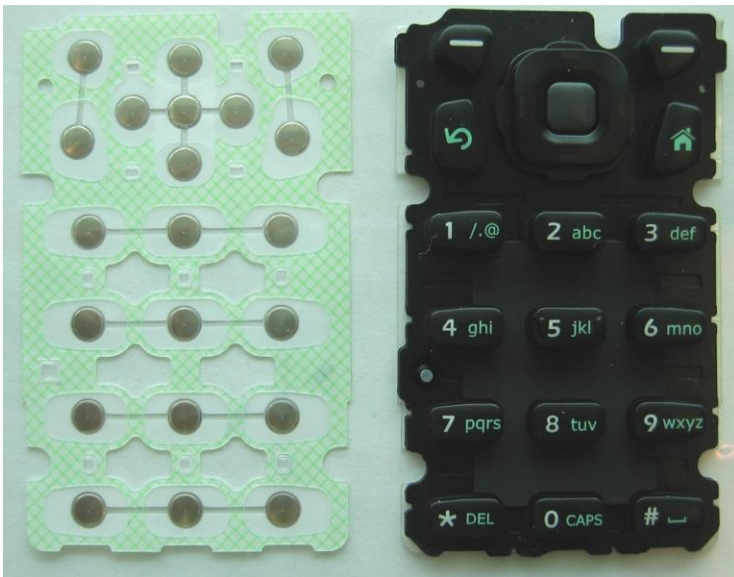


Figure 13: Keypad



Figure 14: Cover Shield bottom

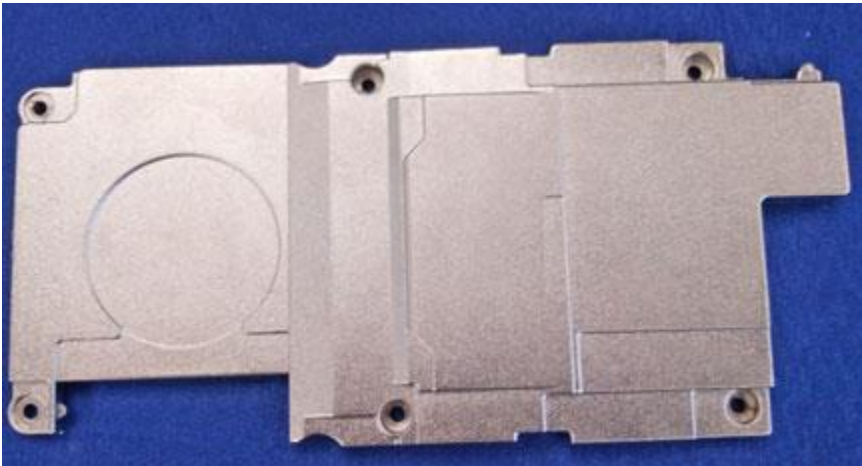


Figure 15: Cover shield top



Figure 16: Main chassis shield bottom



Figure 17: Main chassis shield top



Figure 18: Keyboard interconnect FPC bottom

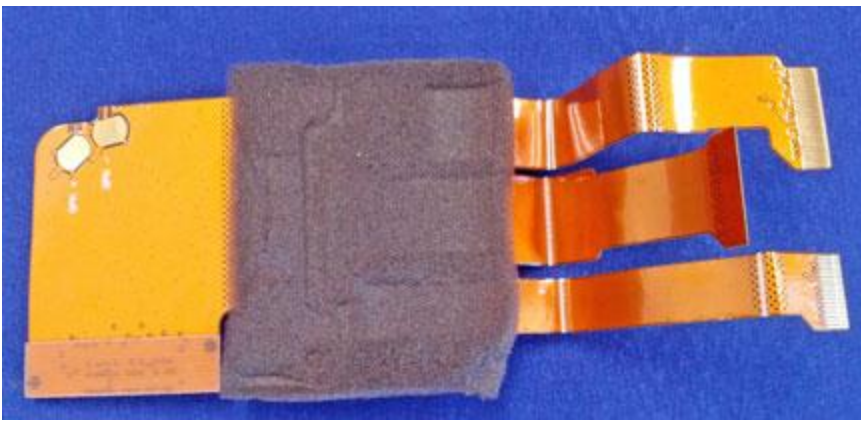


Figure 20: Keyboard interconnect FPC top





Figure 21: Plastic housing with Accessory FCP and PTT FCP