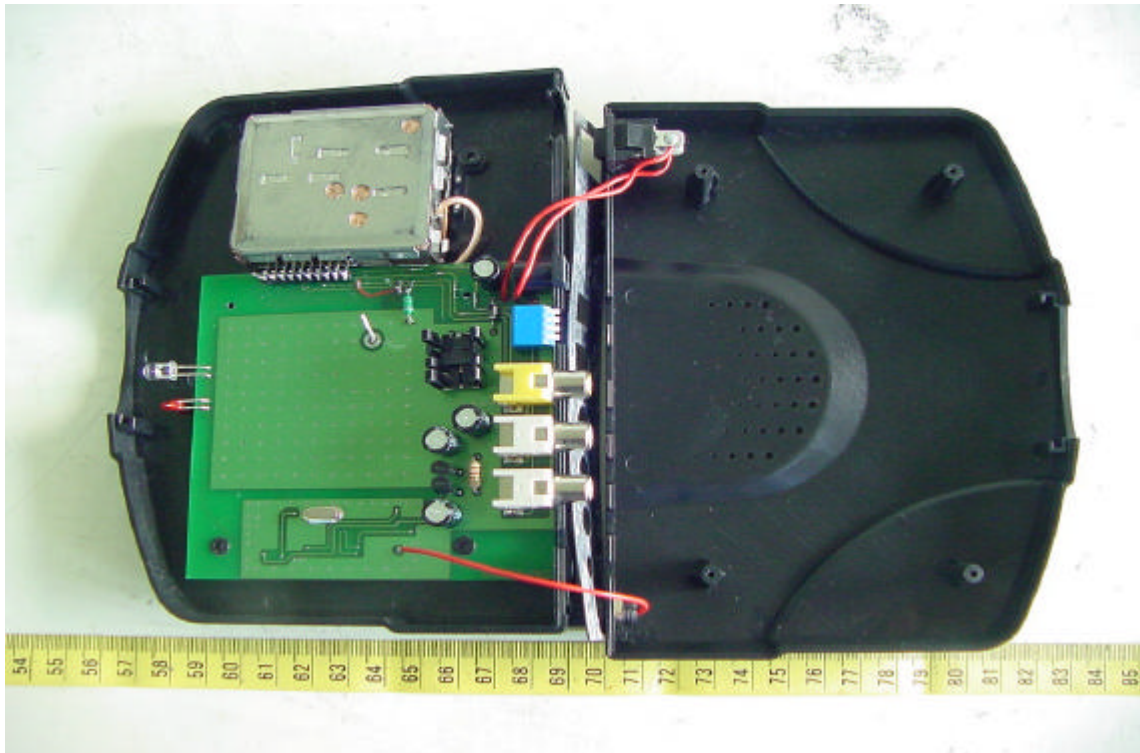


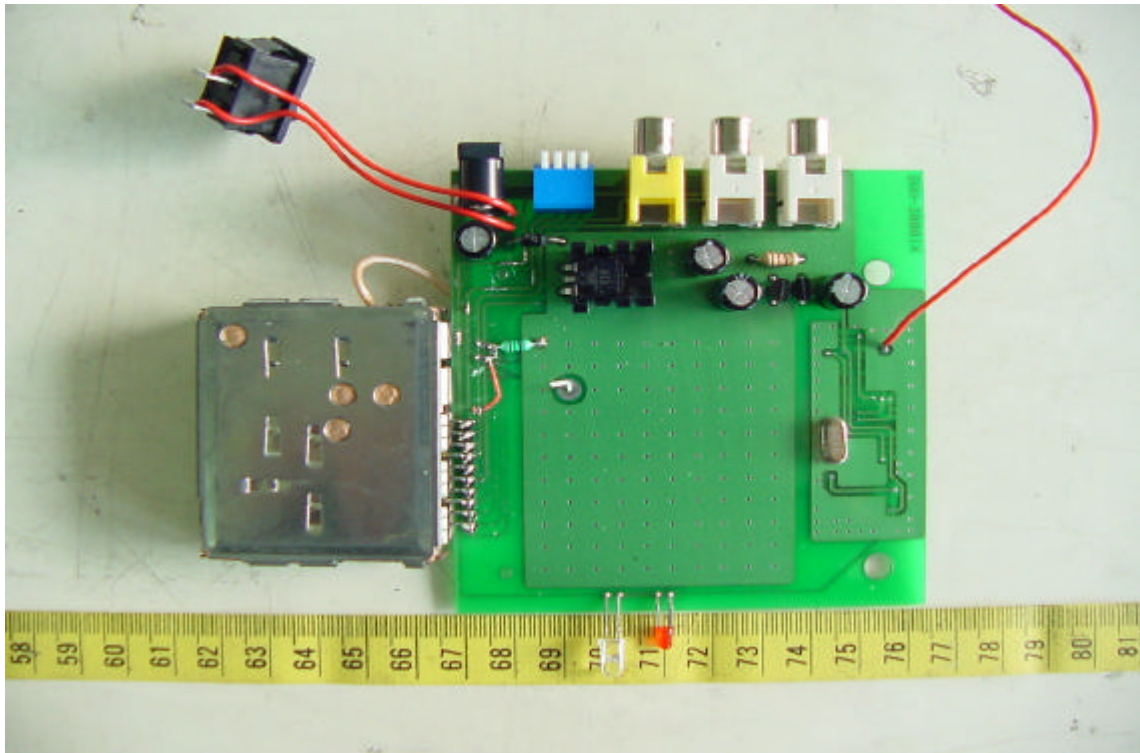
## CONSTRUCTED PHOTOS of EUT

### 5. Internal View of Transmitter

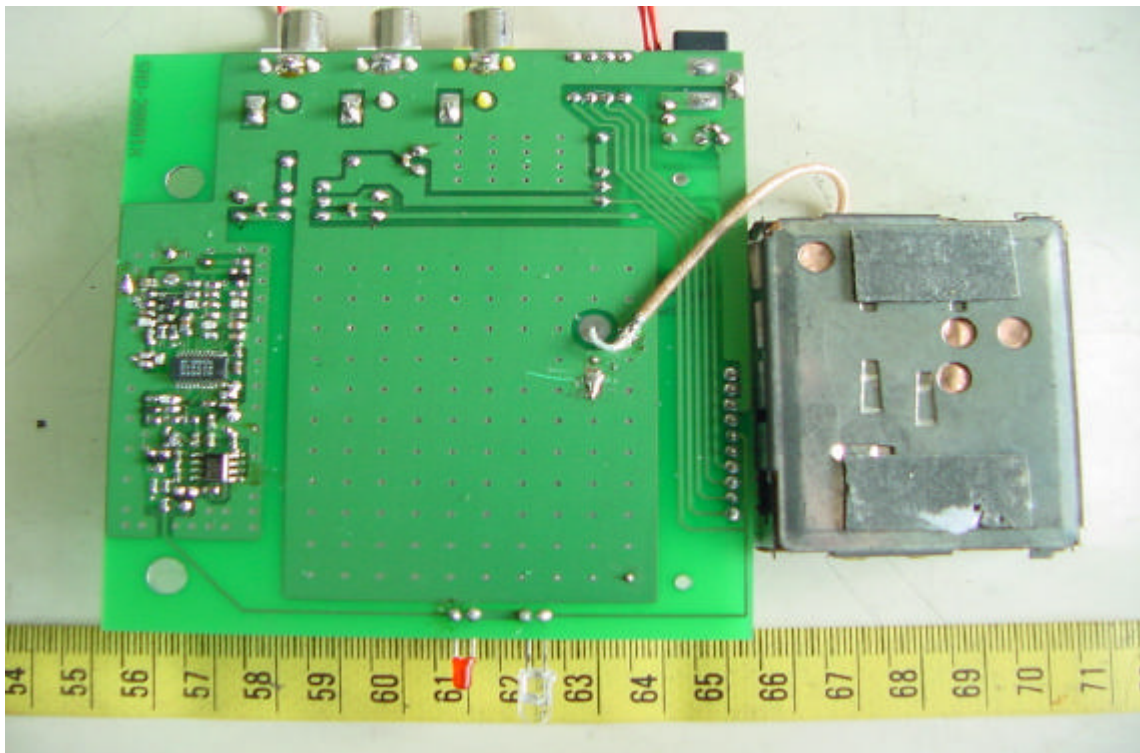


## CONSTRUCTED PHOTOS of EUT

### 6. Component View of Transmitter



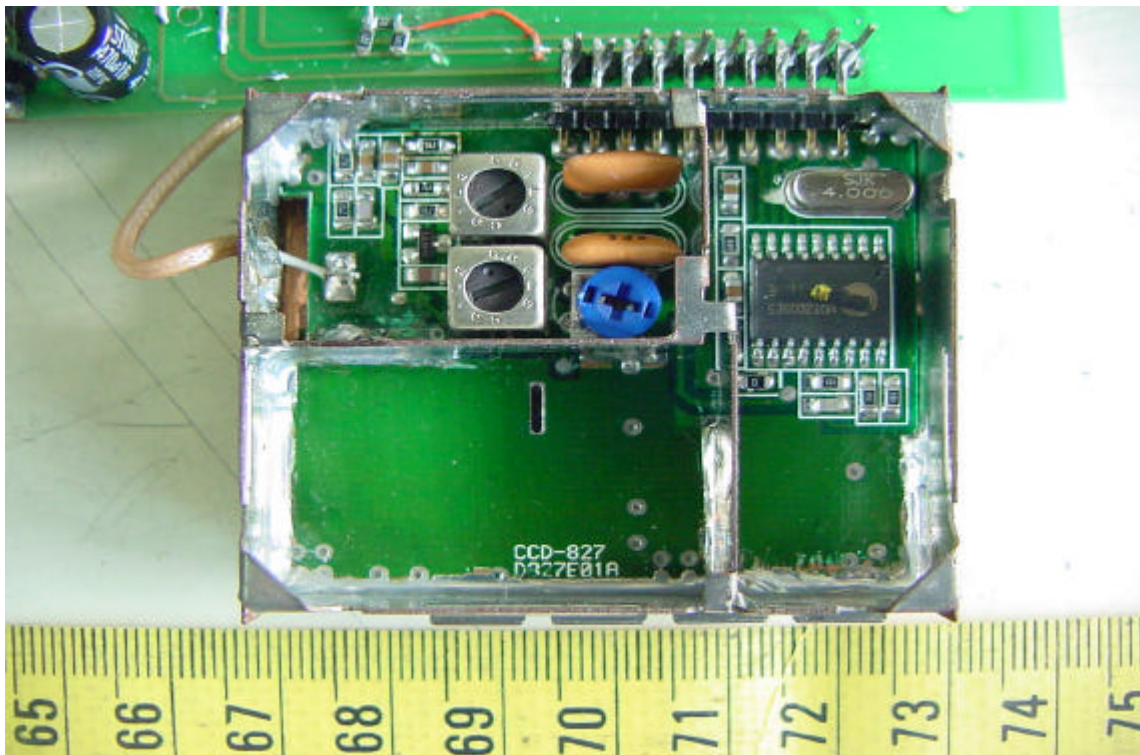
### 7. Solder View of Main PCB (Transmitter)



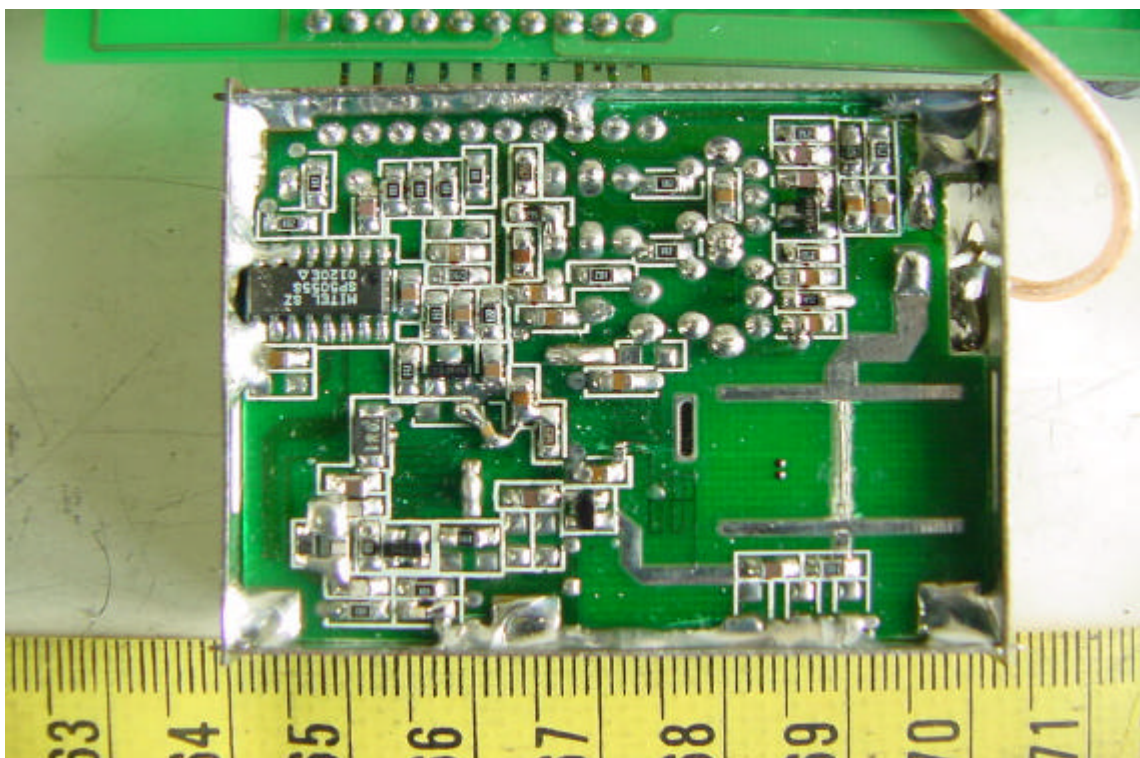


## CONSTRUCTED PHOTOS of EUT

### 8. Component View of Main PCB (Transmitter)

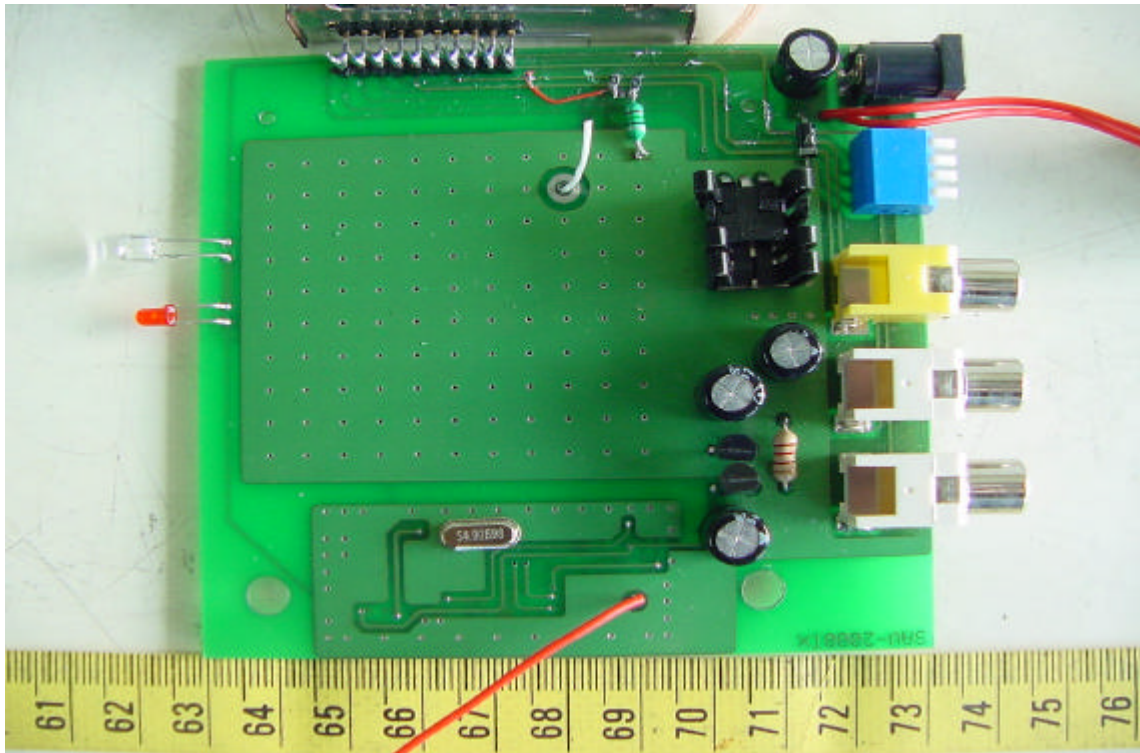


### 9. Solder View of Main PCB (Transmitter)

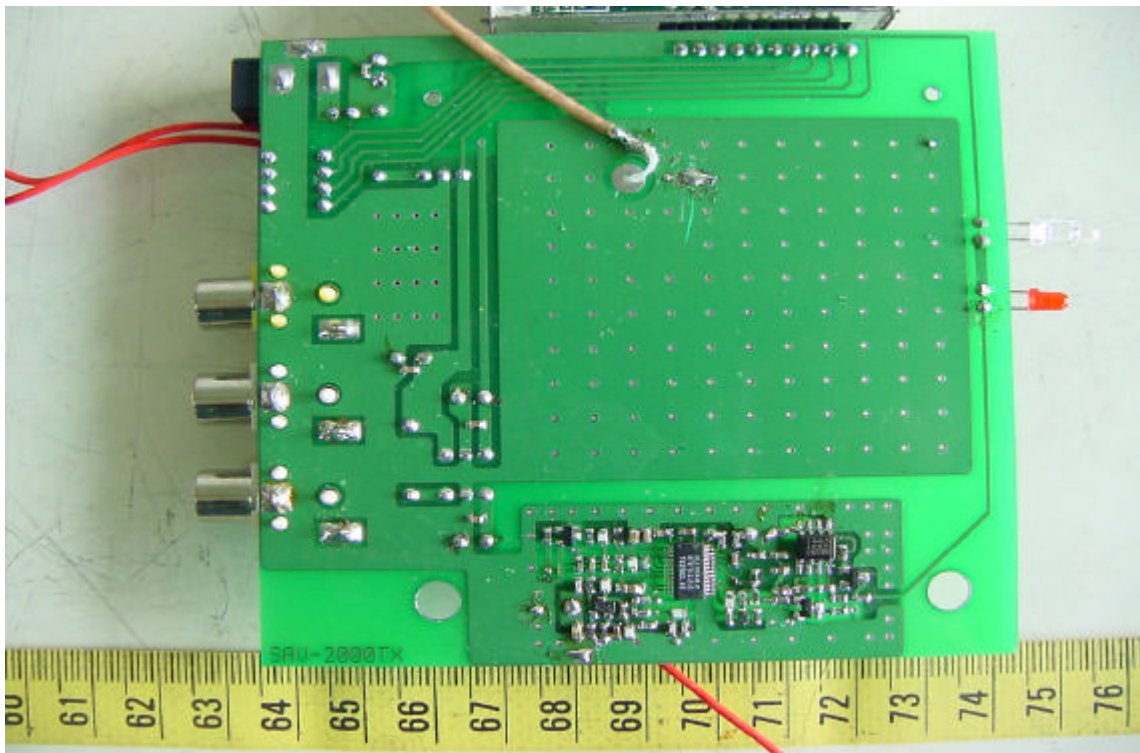


## CONSTRUCTED PHOTOS of EUT

### 10. Component View of Main PCB (Transmitter)



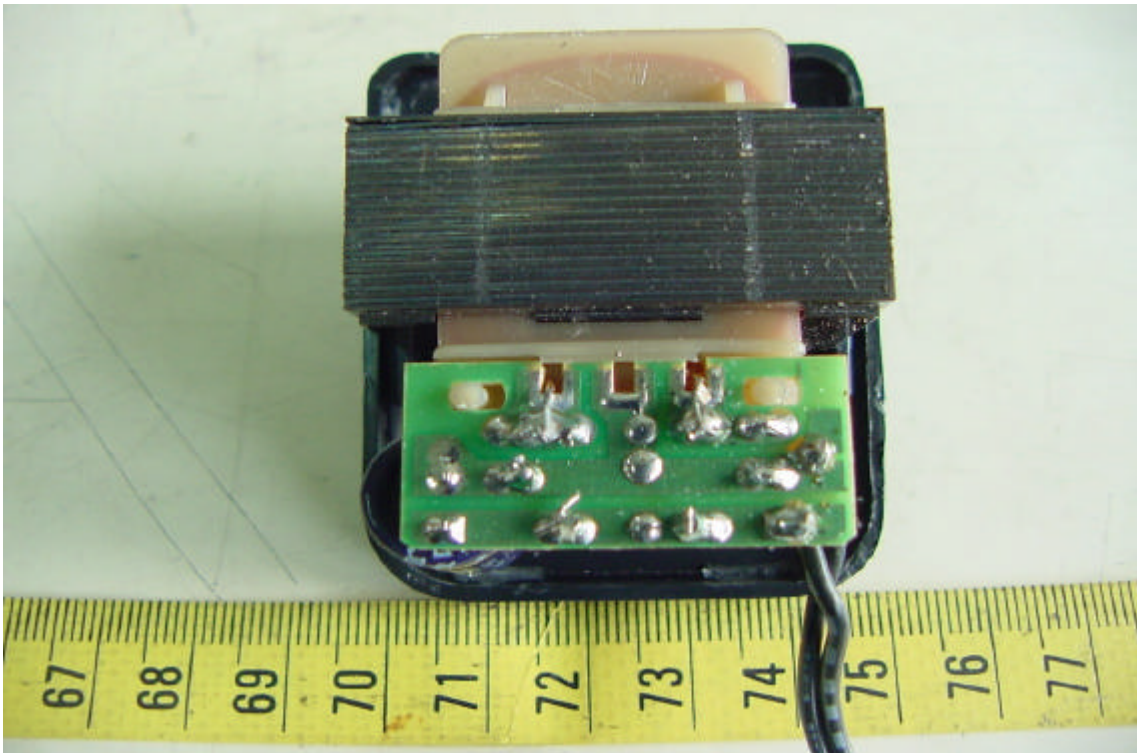
### 11. Solder View of Main PCB (Transmitter)





## CONSTRUCTED PHOTOS of EUT

14. Internal View of Adaptor



15. Component View of Adaptor's PCB

