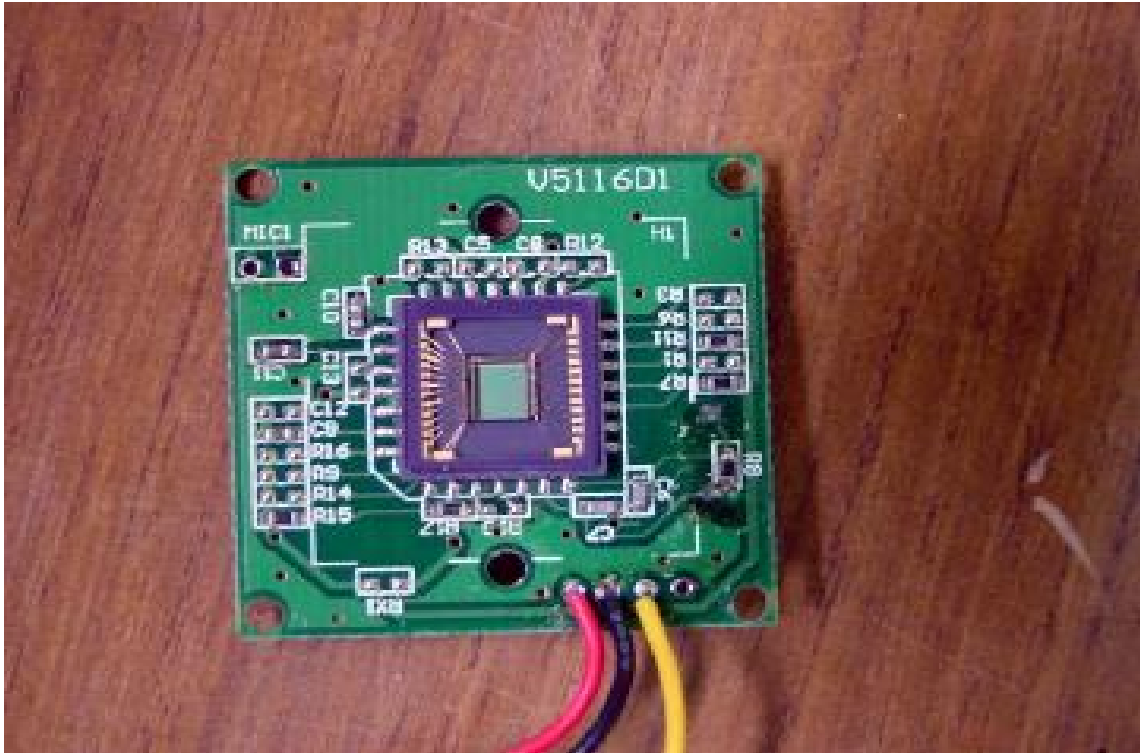
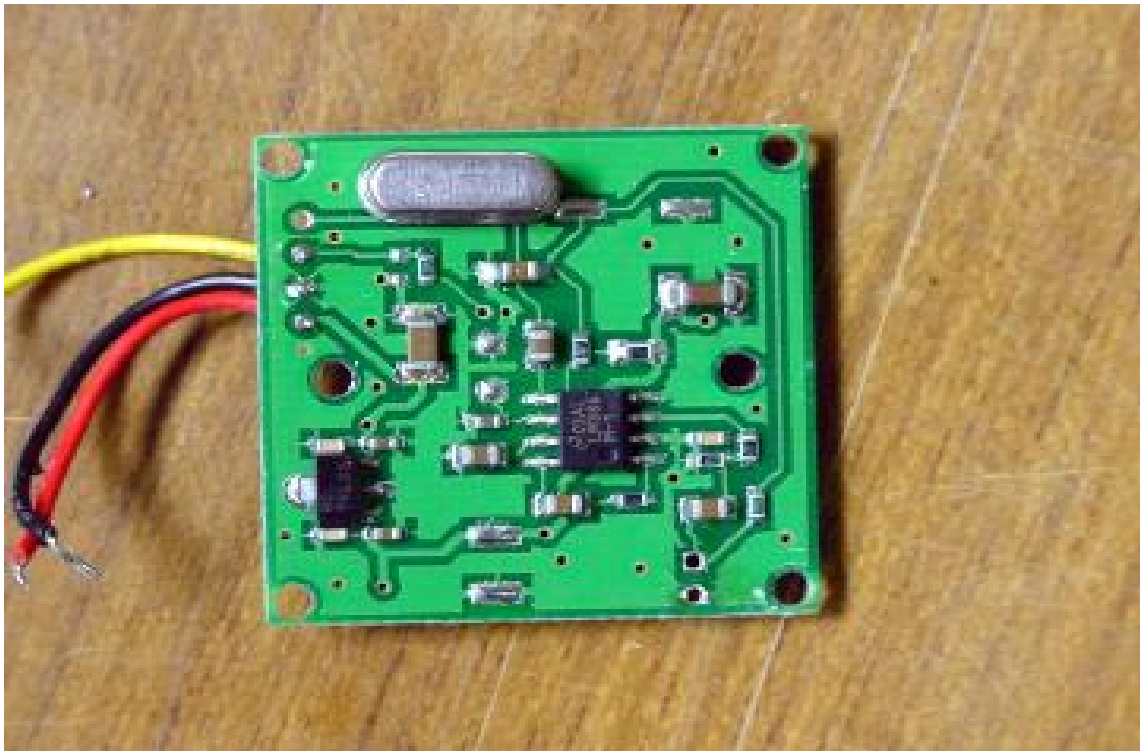


## CONSTRUCTED PHOTOS of EUT

### 13. Component View of CCD PCB

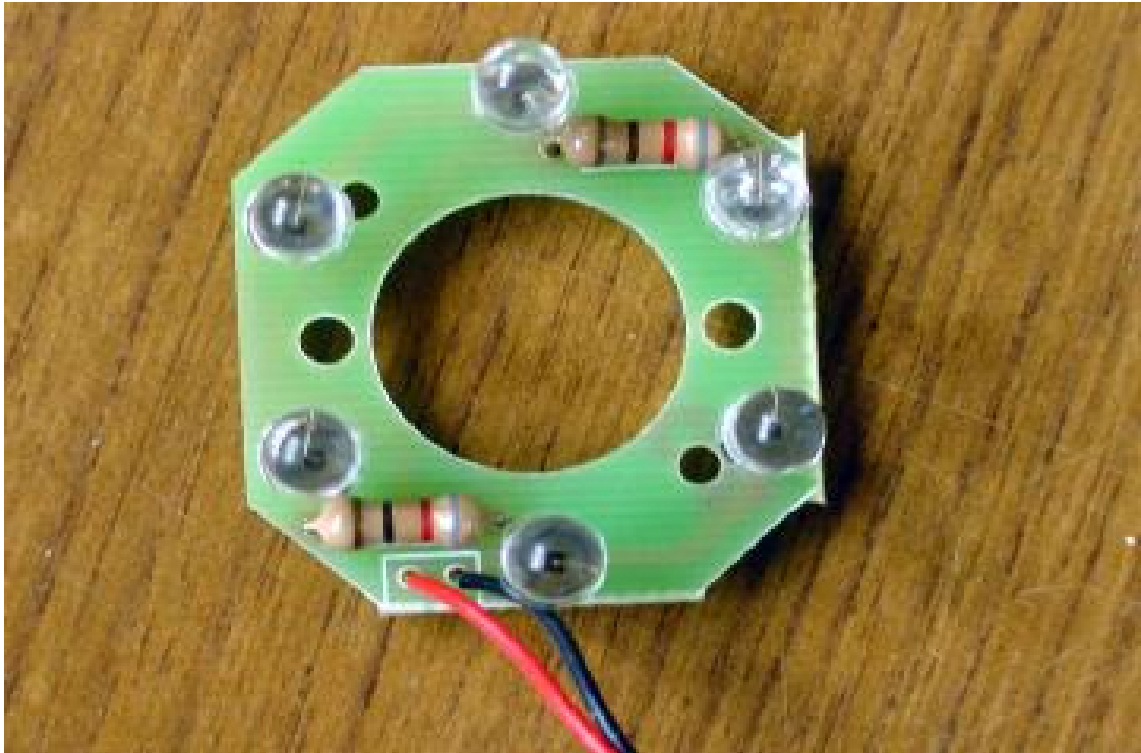


### 14. Solder View of CCD PCB

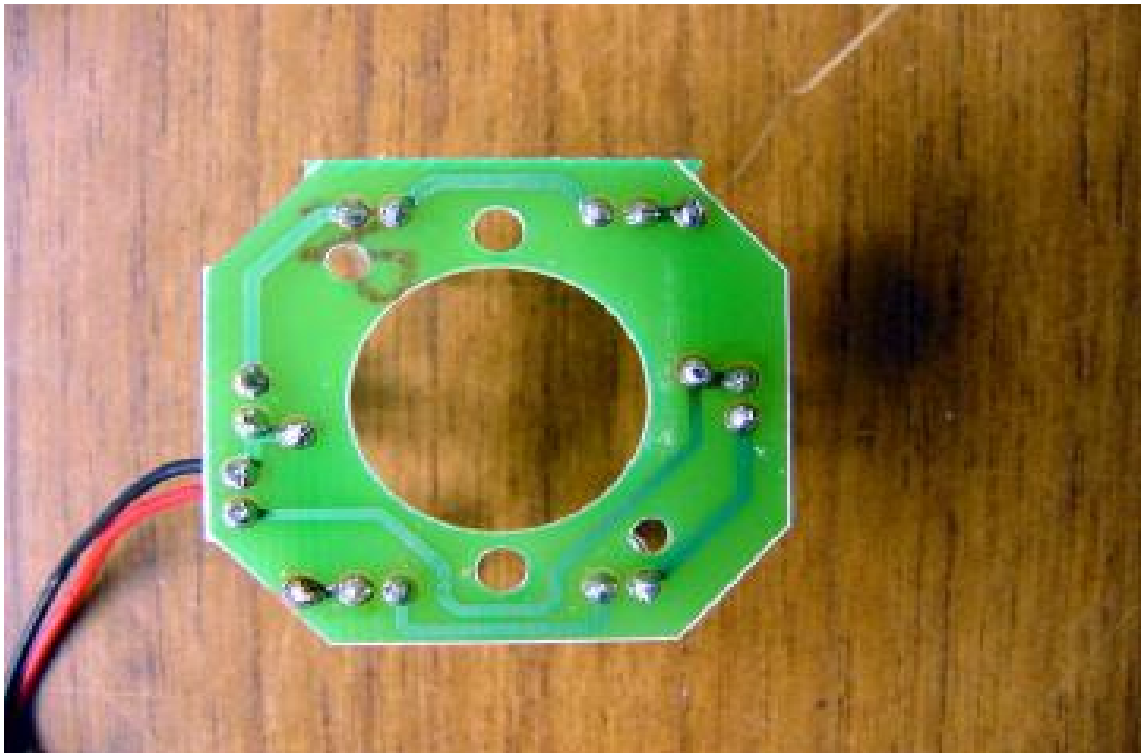


## CONSTRUCTED PHOTOS of EUT

### 15. Component View of LED PCB



### 16. Solder View of LED PCB



## CONSTRUCTED PHOTOS of EUT

17. Front View of Antenna

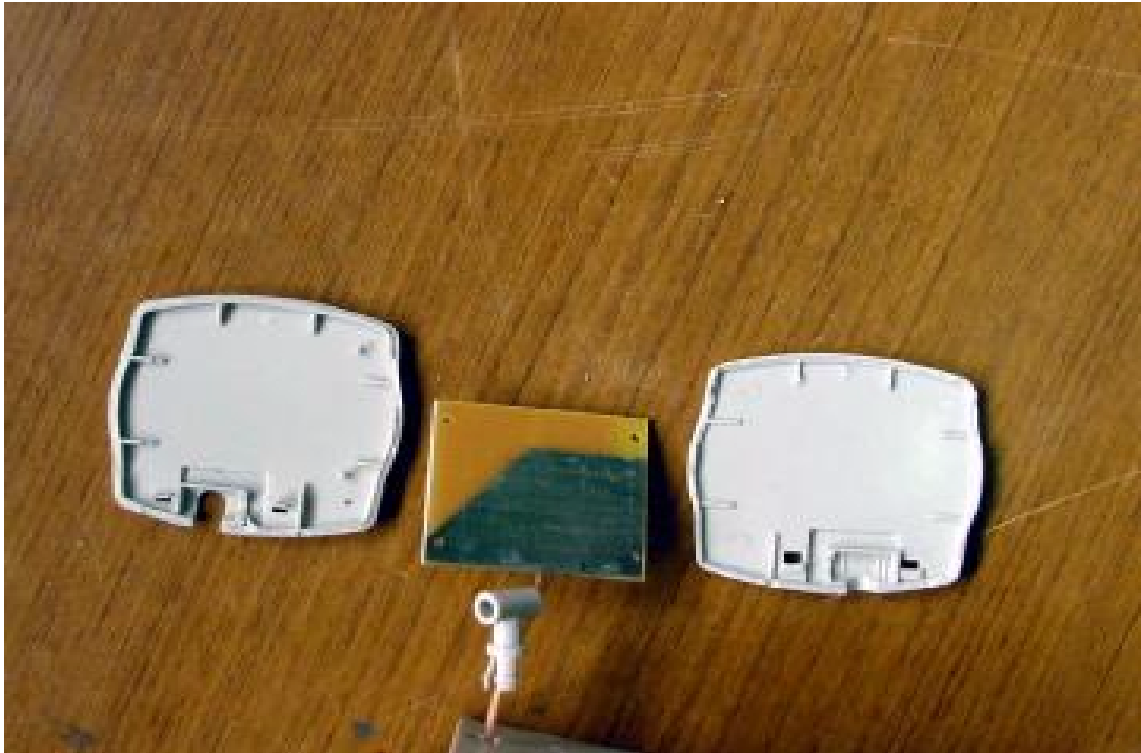


18. Rear View of Antenna



## CONSTRUCTED PHOTOS of EUT

### 19. Internal View of Antenna



### 20. Component View of Antenna's PCB



## CONSTRUCTED PHOTOS of EUT

### 21. Solder View of Antenna's PCB

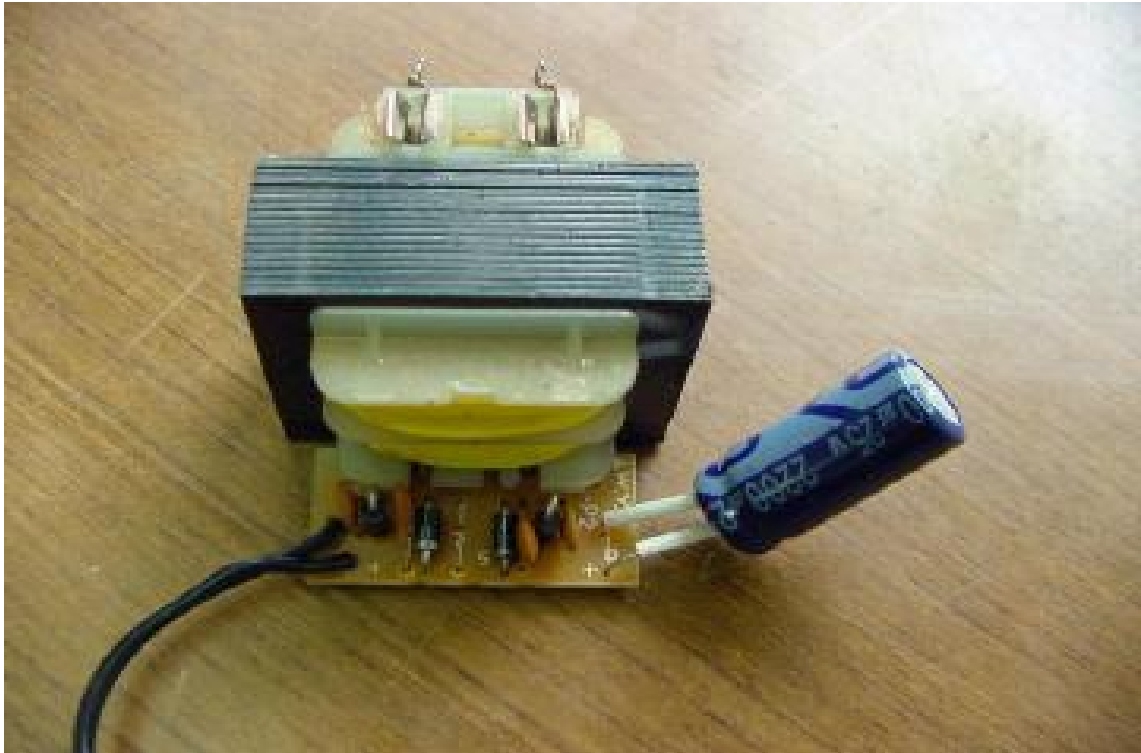


### 22. Internal View of Adaptor



## CONSTRUCTED PHOTOS of EUT

### 23. Component View of Adaptor



### 24. Solder View of Adaptor

