

FCC ID: LDKMWIBS1900

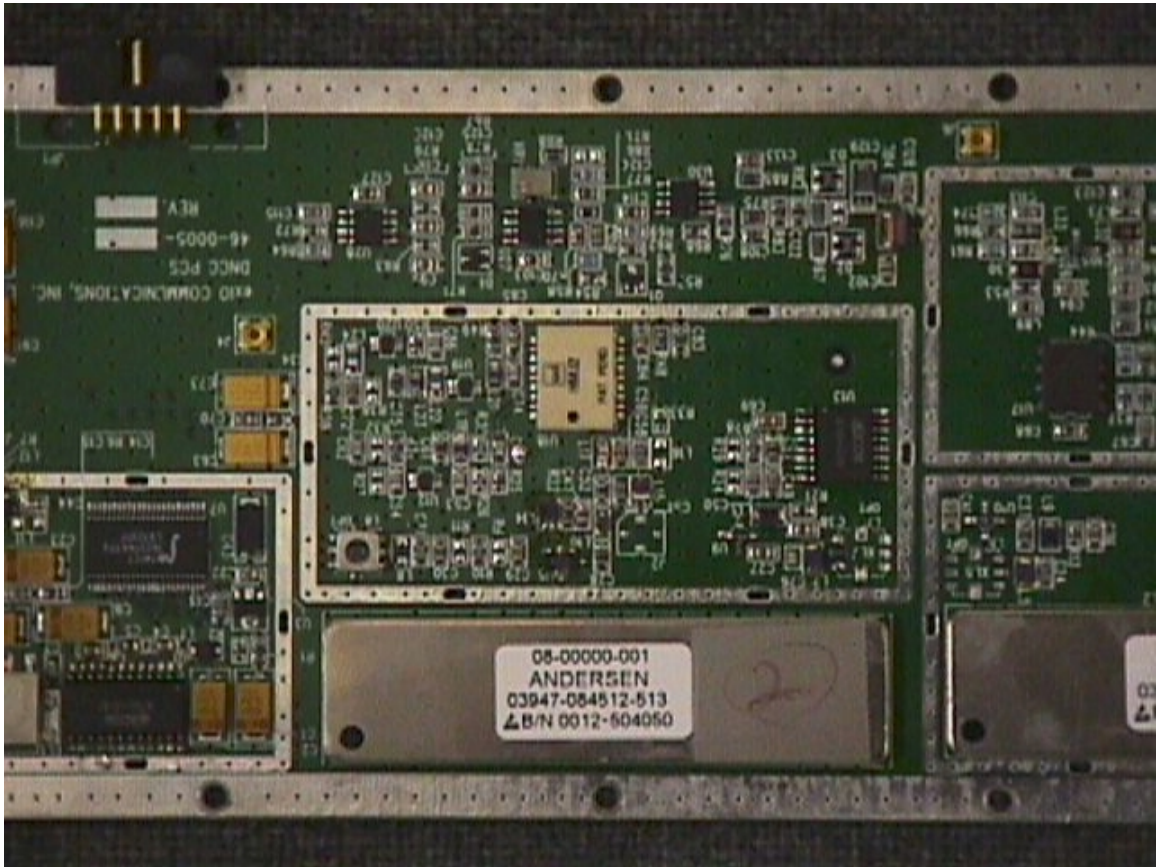


FIG 12. IF BLOCK 1 IN RECEIVER (DNCC)

FCC ID: LDKMWIBS1900

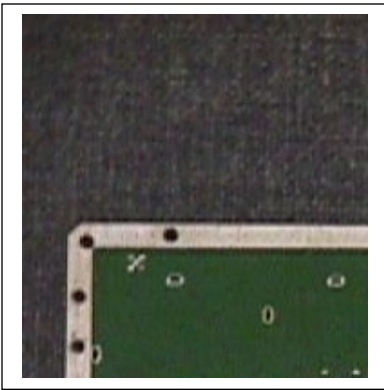


FIG 14. BACKSIDE OF RECEIVER (DNCC)

FCC ID: LDKMWIBS1900



FIG 15. FRONT END BLOCK 1 OF TRANSMITTER (UPCC)

FCC ID: LDKMWIBS1900

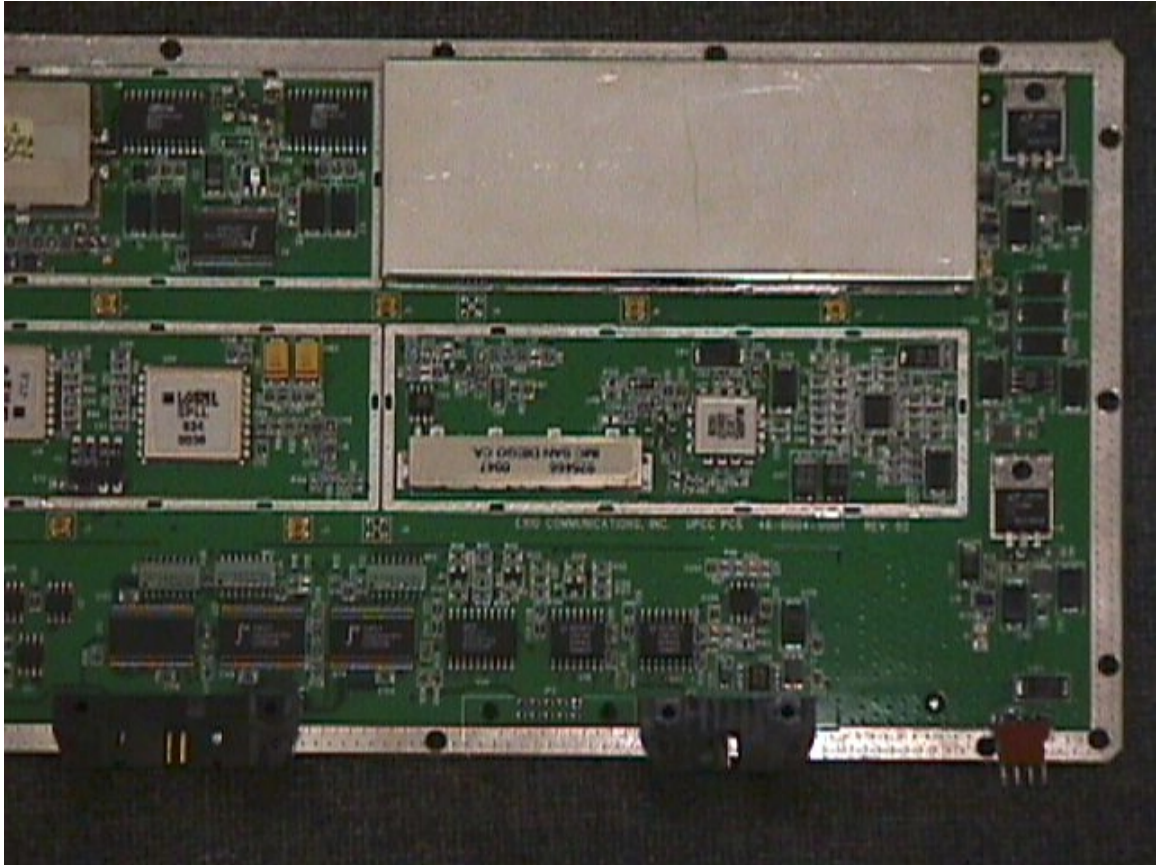


FIG 16. FRONT END BLOCK 2 OF TRANSMITTER (UPCC)

FCC ID: LDKMWIBS1900

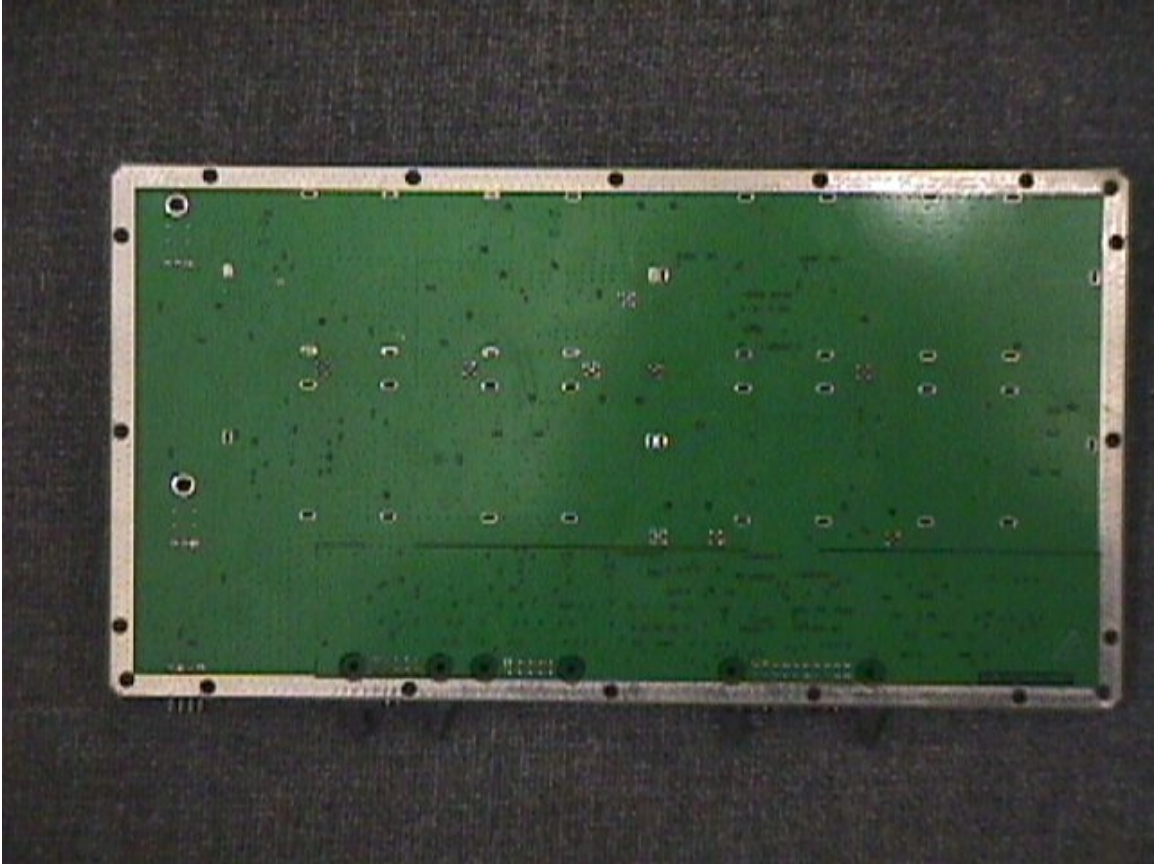


FIG 17. BACKSIDE OF TRANSMITTER (UPCC)

FCC ID: LDKMWIBS1900

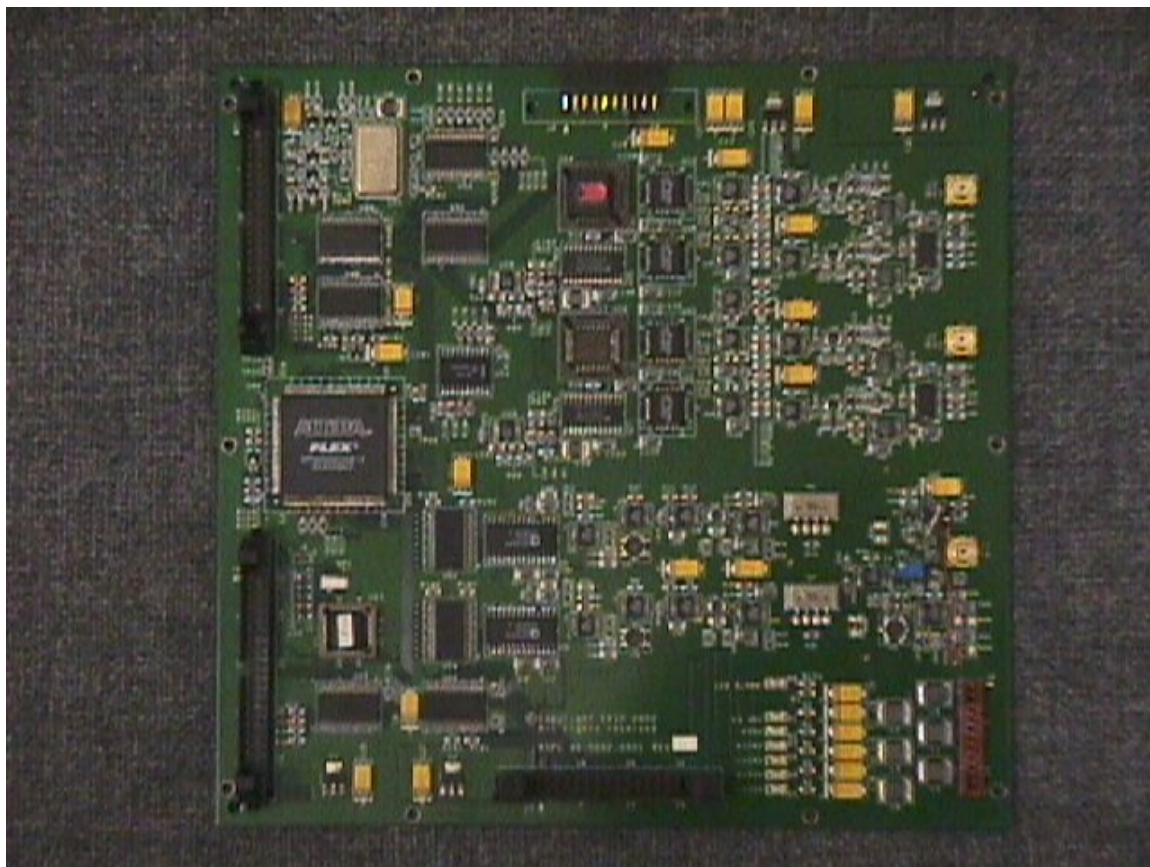


FIG 18. FRONT SIDE OF ANALOG BOARD (ASPC)

FCC ID: LDKMWIBS1900

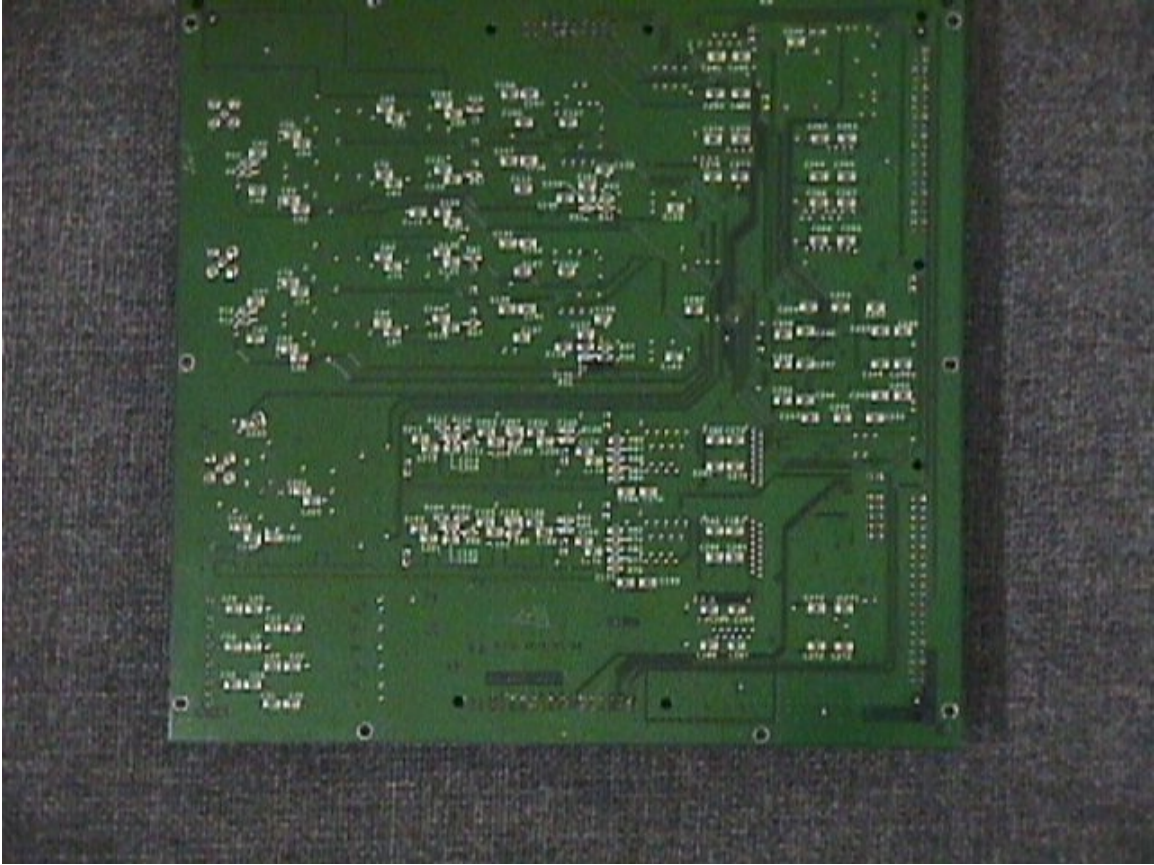


FIG 19. BACKSIDE OF ANALOG BOARD (ASPC)

FCC ID: LDKMWIBS1900

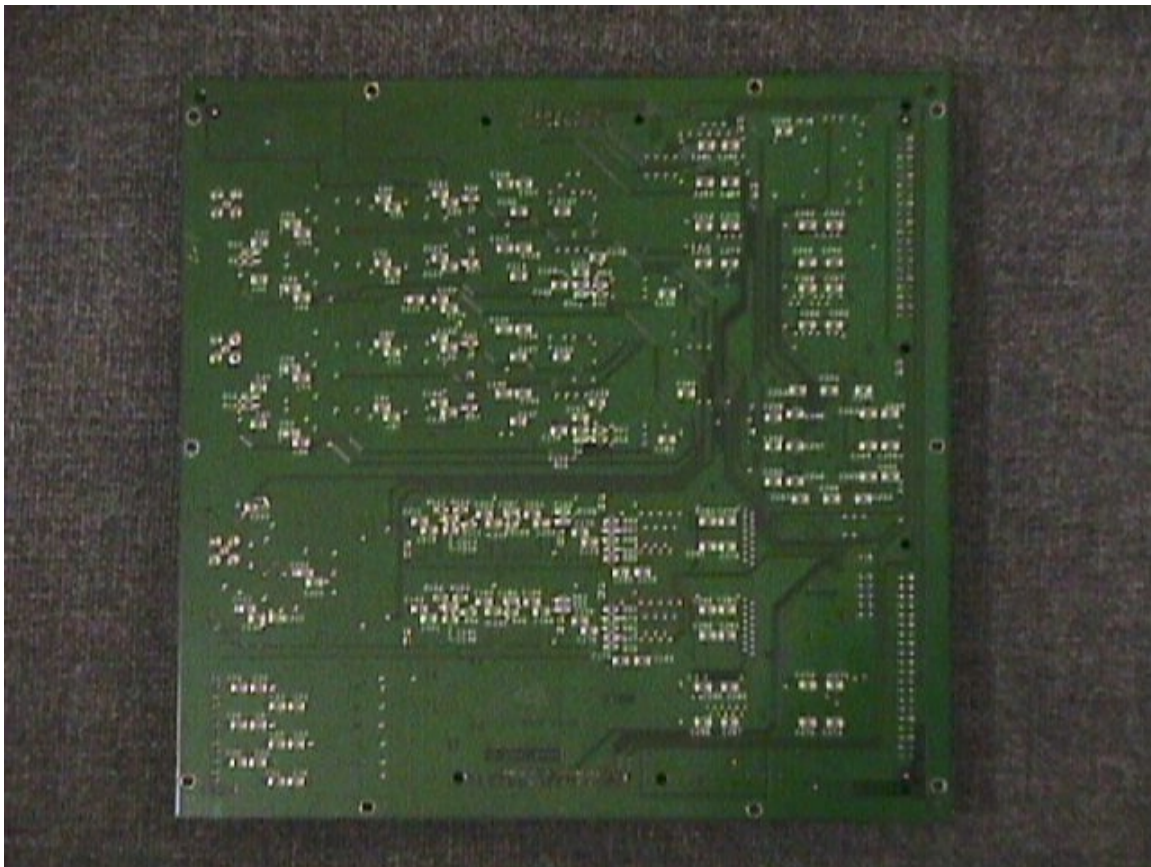


FIG 19. BACKSIDE OF ANALOG BOARD (ASPC)