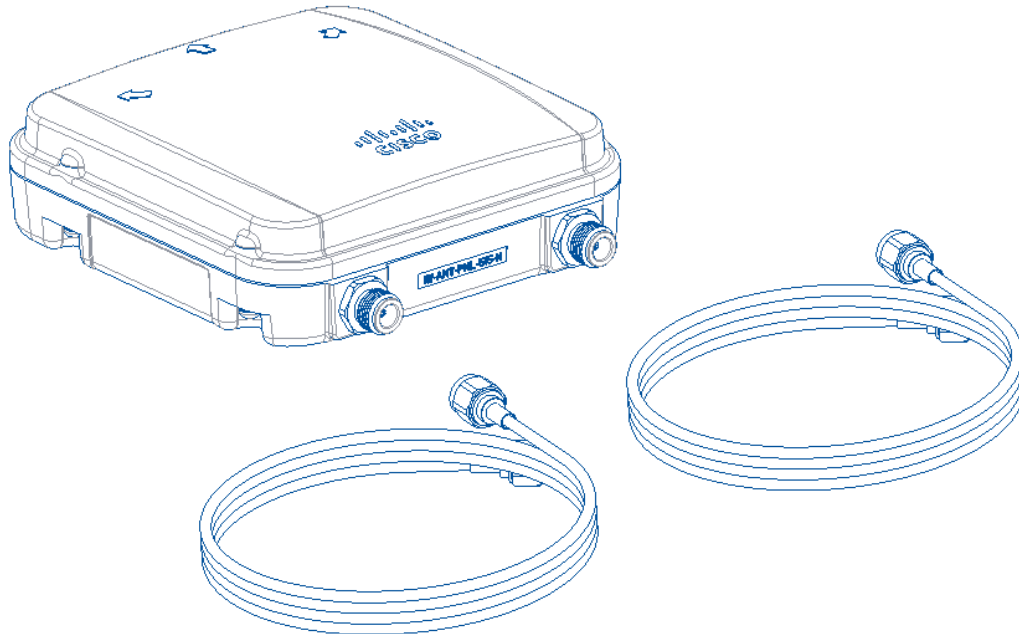


IW-ANT-PNL-515-N

1: Antenna overview



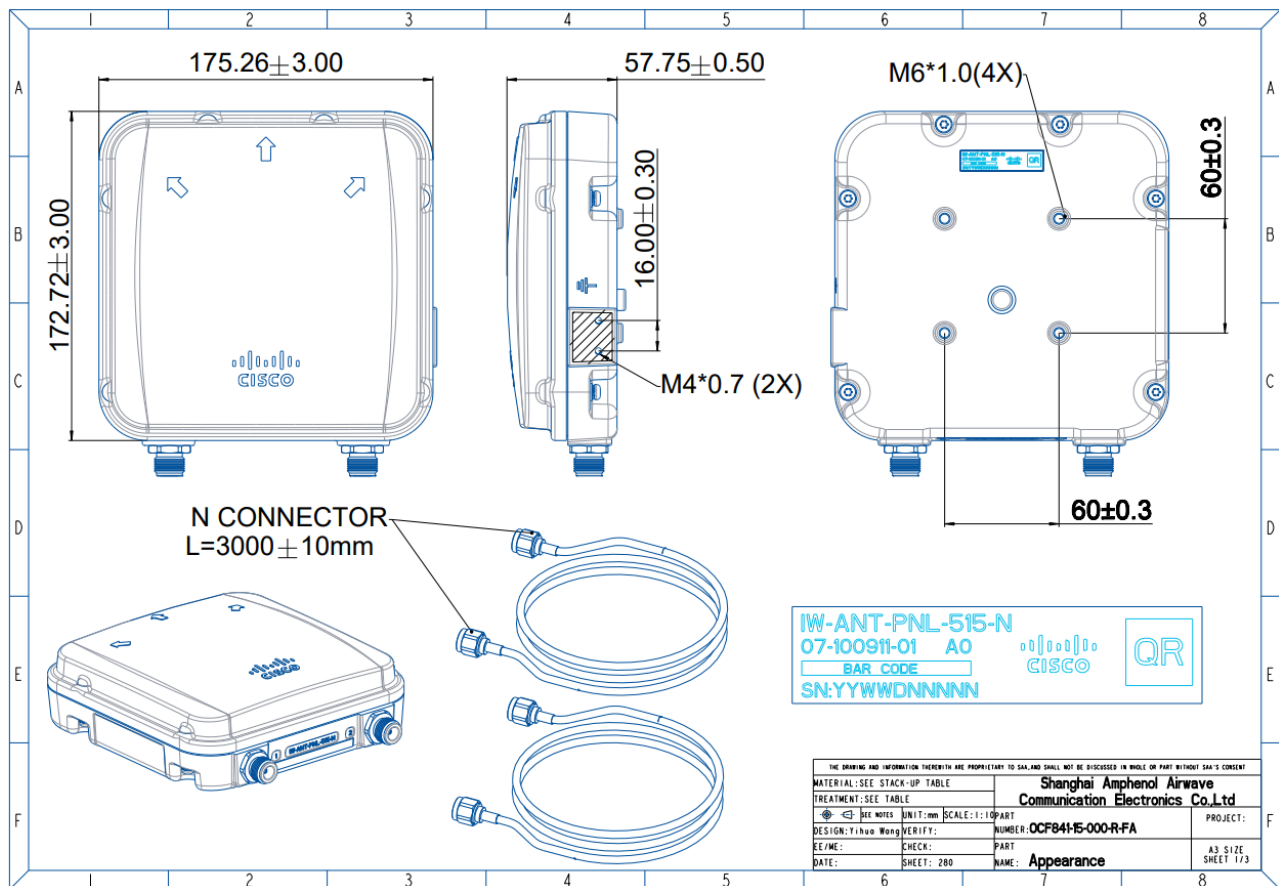
2: General RF Specifications

| Description | Directional 2-port array | |
|--------------------------------|--------------------------|--------------------|
| | <i>Frequency</i> | 4900-5925 MHz |
| <i>Polarization</i> | ±45° | ±45° |
| <i>VSWR</i> | < 2.2:1 | < 2.2:1 |
| <i>Port-to-Port Isolation</i> | > 25 dB | > 25 dB |
| <i>Max. Gain</i> | 15 dBi | 15 dBi |
| <i>Gain ≥ 30 deg elevation</i> | 3 dBi | 3 dBi |
| <i>HPBW (V, H)</i> | 21±4 deg, 28±5 deg | 17±4 deg, 26±5 deg |

3: Mechanical Specifications

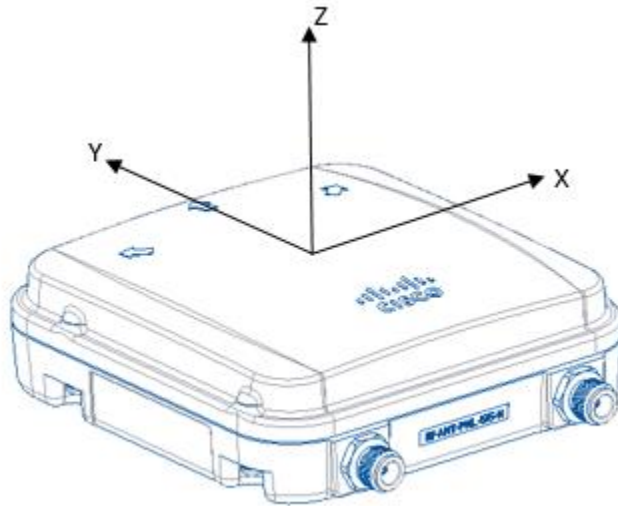
| | |
|----------------|----------------------|
| Device size | 191mm * 175mm * 58mm |
| Cable length | 3 m |
| Cable Type | LMR 240 |
| Connector | N-Type, female |
| Wind rating | 200 km/h (max) |
| Operating temp | -40 to +85 °C |
| Flammability | UL-94, V0 |
| IP rating | IP66, IP67 |

4: Mechanical Drawing

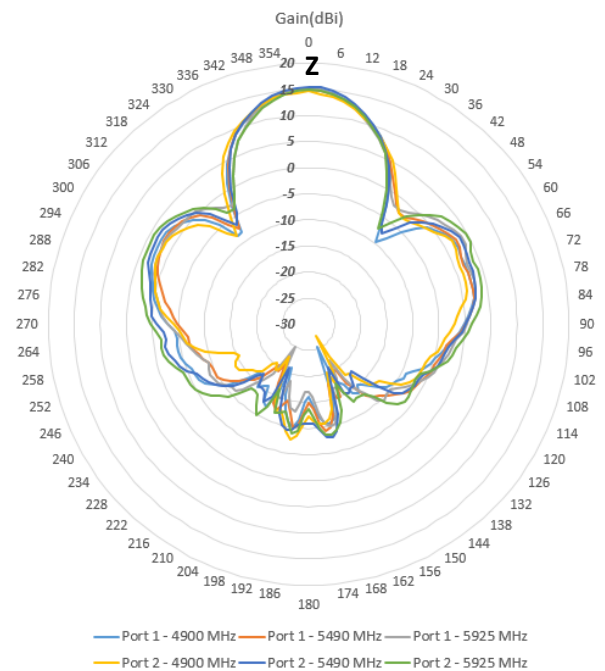
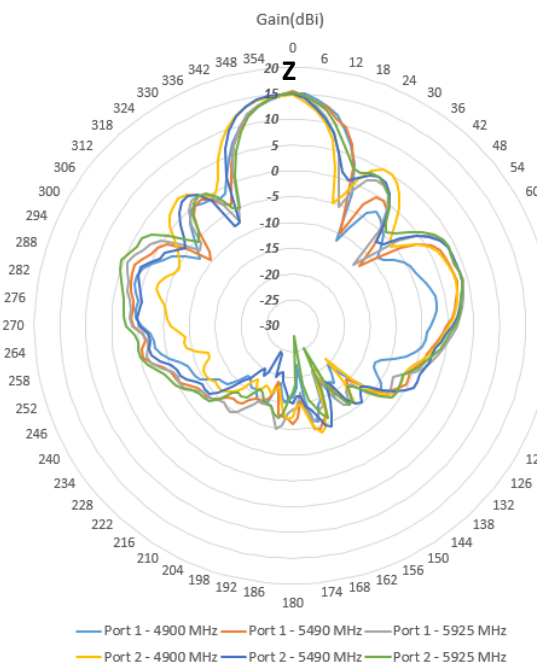


5: RF Performance: Radiation Patterns

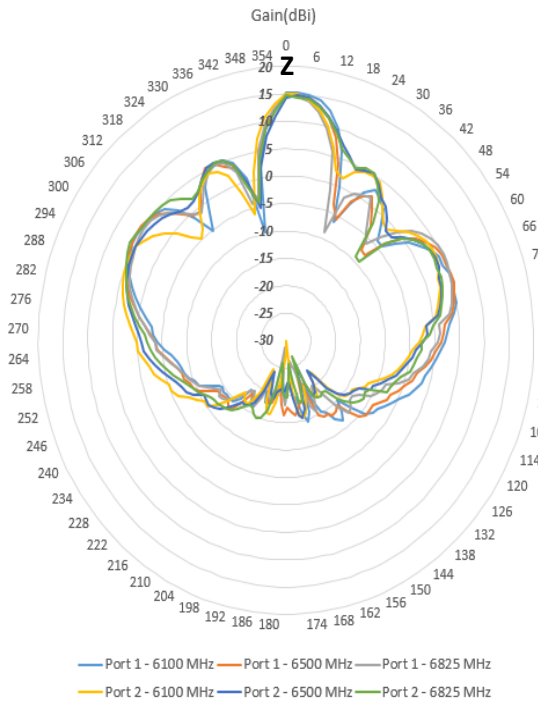
5.1: Radiation pattern test coordinate system with the DUT



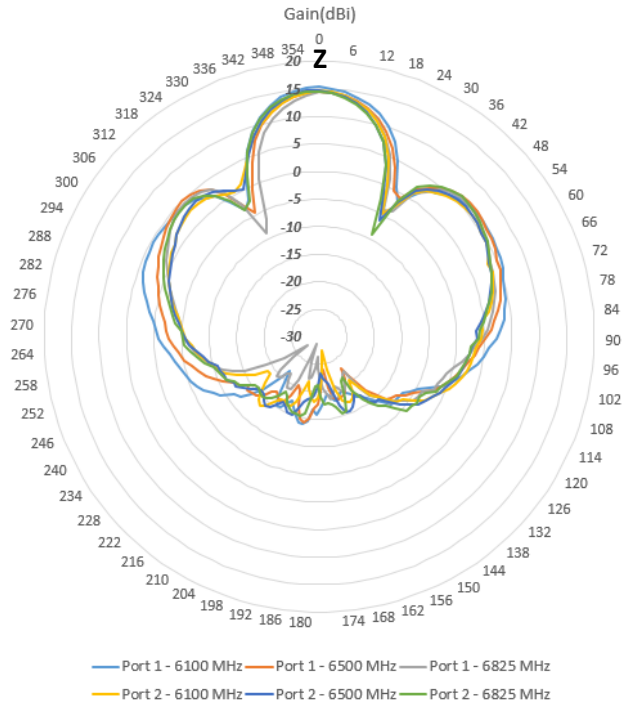
5.2: 5 GHz Radiation Pattern



5.3: 6 GHz Radiation Pattern



Vertical plane



Horizontal plane

Shanghai Amphenol Airwave Communication Electronics Co., Ltd.
 No 689 Shen Nan Road, Xin Zhuang Industry Park,
 Shanghai 201108 P. R. China
<http://www.amphenol-saa.com>