

P/N 07-1192-01, AIR-ANT5144P2M-N 5GHz Dual-Polarized Patch Array Directional Antenna, IP67 Rated

This product is a 2 dual-polarized directional antenna for the 5 GHz band. This antenna will be used in conjunction with the various versions of the Fenway 2 outdoor AP products requiring single band (MIMO) antennas. Applications include AP-to-AP backhaul (network extension); universal backhaul, i.e., simultaneous access and backhaul; serial backhaul when 2 backhaul radios are present; and rail universal access.

Features

- Directional antenna for outdoor operation, IP67 rated
- Operates over the entire 5 GHz band, 5150 - 5900 MHz
- MIMO enclosure - Dual polarized, dual feed antenna
- Each antenna includes two 30-inch long pigtail cables, terminated in a right angle Male N connector
- "Medium Gray" UL-94V0 radome
- Included articulating mount that is identical to the mount used for the AIR-ANT2413P2M-N



Electrical Specifications

Operating Frequency Range	Nominal Input Impedance	Nominal VSWR Bandwidth	Gain	Polarization	Port to Port Isolation	Elevation Plane 3 dB Beamwidth (Vertical & Horizontal)	Azimuth Plane 3 dB Beamwidth (Vertical & Horizontal)	F/B Ratio (Vertical & Horizontal)
5150-5900 MHz	50 Ohms	2.0:1 @ 5.1-5.7GHz 1.5:1 @ 5.7-5.9GHz	13 dBi	Dual Polarization, Dual Port Vertical/Horizontal	15 dB min	28° typical	28° typical	25 dB Typ

Mechanical Specifications

Radome Dimensions	Weight	Radome Material	Radome Color	Cable	Connectors (2)	Mounting Method
7.8 H x 7.8 W x 1.2 D inches	1 lb (not including mounting bracket)	UL94 V-0 rated Polycarbonate	Medium Gray	Two 2.5-foot Pro-Flex Plus 195 cables (one for each polarization)	Right Angle, Male N	Attached articulating mount capable of +/- 45° azimuth plane adjustment, and +/- 60° elevation plane adjustment. Included hose clamps accommodate a pole diameter of 1.63-2.3 inches.

Environmental Specifications

Environment	Operating Temperature Range	Storage Temperature Range	Humidity	Ingress Protection	Compliance
Outdoor	-40°C to 55°C	-30°C to +70°C	5% to 95% RH	IP67	RoHS

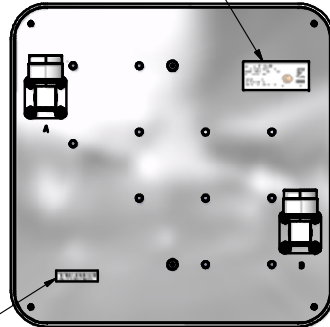
NOTES: UNLESS OTHERWISE SPECIFIED:
 1. INTERPRET DRAWING PER ANSI/ASME Y14.5
 2. MATERIAL: SEE INDIVIDUAL COMPONENT PRINTS.
 3. FINISH: SEE INDIVIDUAL COMPONENT PRINTS.
 PARTS SHALL BE CLEAN AND FREE OF FOREIGN MATTER.
 ALL DIMENSIONS APPLY AFTER PLATING.
 4. ALL MATERIALS SHALL BE ROHS COMPLIANT.
 5. PARTS SHALL BE PACKAGED TO PREVENT DAMAGE IN SHIPMENT AND HANDLING.
 6. ALL DIMENSIONS ARE FOR REFERENCE ONLY AND NO TOLERANCES ARE IMPLIED.

REVISION HISTORY			
REV	DESCRIPTION	DATE	APPROVED
1	INITIAL DRAWING RELEASE (C09039)	10/01/12	ZV

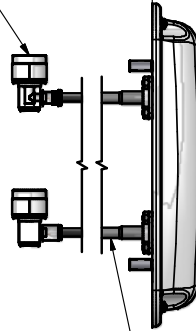
RIGHT ANGLE N CONNECTOR

PRODUCT LABEL

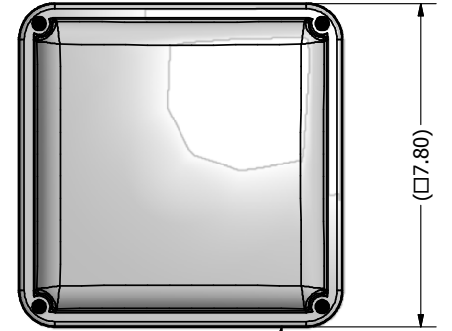
SERIALIZATION LABEL



(1.20)

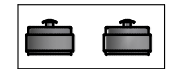


30" PROFLEX PLUS 195 STYLE CABLE

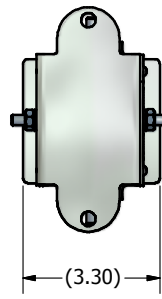
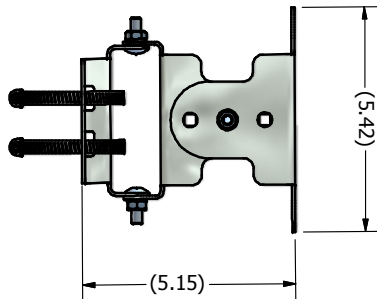


(7.80)

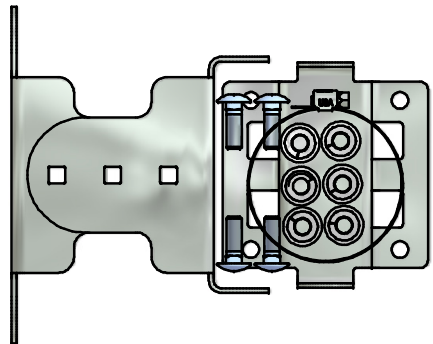
LEXAN EXL9330 RADOME
 COLOR: SABIC GY5B048



CONNECTOR CAPS



MOUNT KIT ASSEMBLED



MOUNTING KIT BOXED

SUPPLIER PRINT ACCEPTANCE: <input type="checkbox"/> Accept drawing/specification: No changes needed: <input type="checkbox"/> This part is RoHS compliant <input type="checkbox"/> This part is REACH compliant <input type="checkbox"/> Accept drawing/specification. Notes/Mark-ups added <input type="checkbox"/> Cannot accept drawing/spec. Notes/Mark-ups added Supplier Projected Outgoing Quality: SIGMA LEVEL: _____ or PPM: _____ Signature: _____ Date: _____	UNLESS OTHERWISE SPECIFIED DIMENSIONS ARE IN INCHES [DIMENSIONS ARE IN mm]	DRAWN: ZV DATE: 4/25/2012 CHECKED: _____ DATE: _____	PCTEL, INC. ANTENNA PRODUCTS 471 BRIGHTON DRIVE BLOOMINGDALE, IL 60108 PH. 630-372-6800 FAX. 630-372-8077
	FOR TOLERANCES NOT SPECIFIED USE: .XX in ± .1 in, .XXX in ± .01 in, .X.XXX in ± .005 in [X mm ± 3 mm], [X.X mm ± .3 mm], [X.XX mm ± .13 mm] ANGULAR ± 1°, FRACTIONAL ± 1/64	APPROVED: _____ DATE: _____ MATERIAL: SEE COMPONENT PRINTS FINISH: SEE COMPONENT PRINTS	
THIRD ANGLE PROJECTION 		PROPRIETARY DATA THE INFORMATION CONTAINED IN THIS DOCUMENT IS OF A PROPRIETARY NATURE AND MAY NOT BE USED OR REPRODUCED WITHOUT THE EXPRESSED WRITTEN PERMISSION OF PCTEL INC., BLOOMINGDALE, IL 60108	SIZE: B SCALE: 1:1 SHEET: 1 OF 1