

<Product name> 55/75

TTC60-35 and TTC60-36

DRAFT User Guide



These products are all-in-one devices that provides everything you need to collaborate with your teams in physical meeting rooms. The device is a presentation screen, a digital whiteboard, and an audio and video conferencing system, all in one product. The device also securely connects to virtual meeting spaces to facilitate a continuous workflow before, during, and after everyone has left the physical conference room.

Introduction

The device has a high-resolution 4K LED screen. We offer two screen sizes: 55 inch (TTC60-35) and 75 inch (TTC60-36). The device has an integrated dual 4K camera, which can capture people that are close to the camera as well as provide close-ups of speakers that are far away. Embedded microphones support speaker tracking. Integrated speakers and internal or external microphones provide a great audio experience. You can share content either using a cable or wirelessly, and the device has a capacitive touch interface so that you can easily whiteboard and annotate on content. The device offers USB pass-through, so that the device's camera, microphones, and screen can be used for apps that are running on your laptop.

The device also supports features such as automatic wake-up/standby, easy meeting-join experience with One Button to Push (OBTP), digital signage, web apps, metrics enabling analytics for better resource planning, customizations through the API and macros, and more.

The device can be registered on the premises or to the Webex cloud. It is optimized for the Webex cloud platform and draws power from the Cisco Webex service.

Using the product

Place calls using name, number, or address

1.



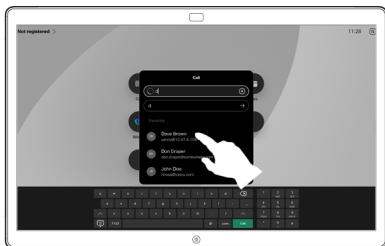
Tap the Call button.

2.



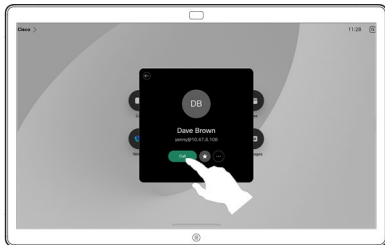
Tap the Search field. This opens the keyboard.

3.



Type in a name, number, or address. Matches and suggestions appear as you type. If the correct match appears, tap it, otherwise keep typing.

4.



Once you've located and selected your contact, tap the green Call button to place the call.

Share content outside calls

1.



Outside a call, connect your presentation source via cable or an app for wireless sharing. Your source screen shows up on the device.

2.



Swipe up from the bottom if you want to select another app or the home screen to view instead.

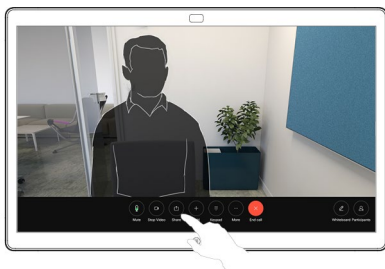
3.



Disconnect your source to stop sharing it to the device. If you're sharing wirelessly, tap the screen and then tap **Stop preview**.

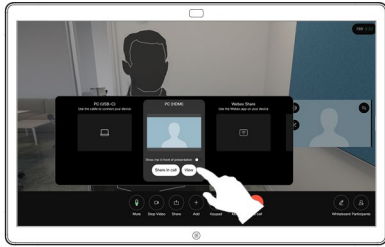
Share content in a call

1.



Tap the screen during a call to get the call controls and then tap **Share**.

2.



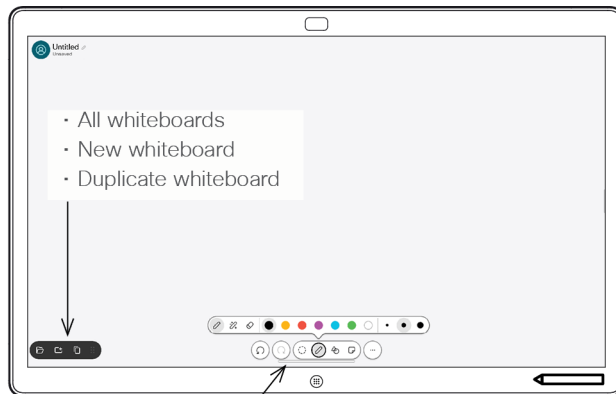
Select a source to share from. If it's connected by cable, tap **View** to preview and then tap **Share** when you're ready. Tap **Share** in call to start sharing right away.

3.



To stop sharing content, tap **Stop sharing**.

Use the Board as a digital whiteboard



- Undo and redo
- Selection tool
- Pen tool: color, line thickness, eraser, shapes adjuster
- Shapes: insert a ready-made shape
- Sticky note
- More: Save, Send, Name, New, and Delete

}

Your Board is also a digital whiteboard. It's an infinite canvas: the size of a page is as large as you want.

To open the whiteboard just tap the **Whiteboard** button on the Board's homescreen. Use the pen or your finger to draw and write on the whiteboard.

You can send your whiteboards as emails to the recipient of your choice. To do this, your video support team must have configured your Board to use a mail server.

Swipe up from the bottom of the screen to open the task switcher. You'll see other open apps, current whiteboards, and the homescreen there, and can easily switch between them by tapping the one you want.

To clear all your whiteboards for the next user, open the control panel and tap **End Session**.

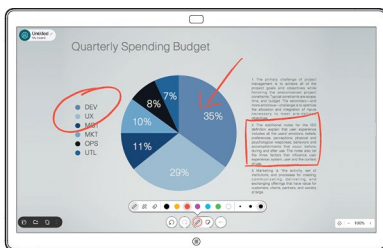
Annotate shared content on the Board

1.



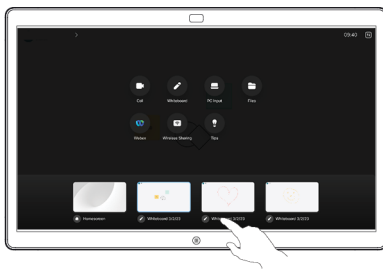
Outside calls, share your computer screen with the image you want to annotate on it, to the Board. Tap the **Annotation** button.

2.



Make your annotations using the tools across the bottom of the screen. You can then resume a presentation or disconnect your source completely.

3.



Your annotated image is saved as a whiteboard. Swipe up to see all your current whiteboards. You can add another or delete an existing one. They'll be deleted when your session is over. If you want to send a whiteboard, see the next section about emailing it.

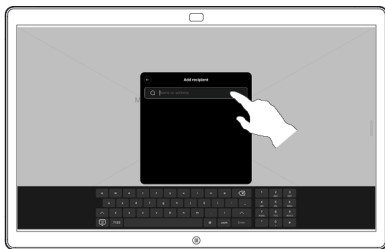
Send annotations or drawings by email

1.



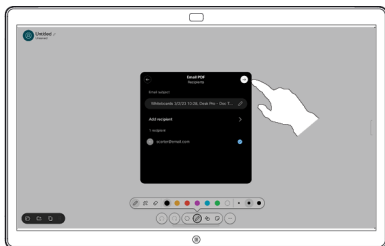
On your whiteboard, tap **More** and then tap **Send to Email**.

2.



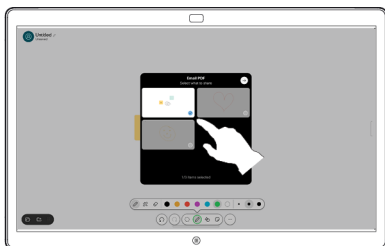
Start typing a recipient name or address. Select the person and tap the right arrow.

3.



Add more recipients if you want, and tap the white arrow when you're done.

4.

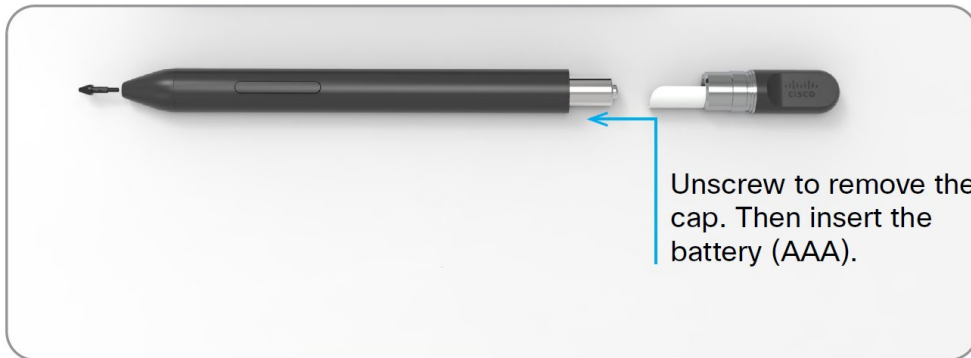


Select the whiteboard(s) you want to send. Tap the white arrow again, and your whiteboards are sent.

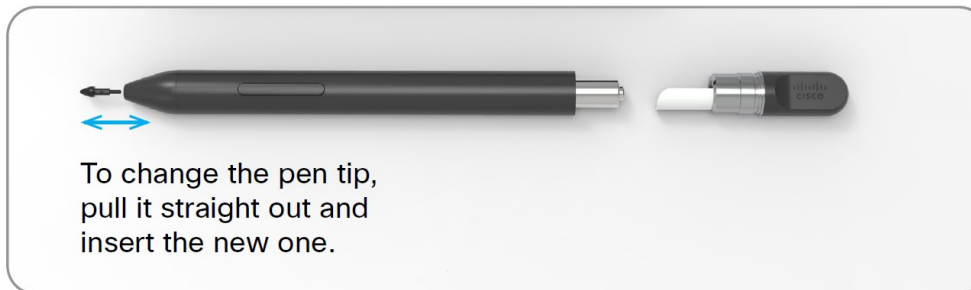
About the active pen



Installing the battery



Pen tip replacement



Americas Headquarters
Cisco Systems, Inc.
San Jose, CA

Asia Pacific Headquarters
Cisco Systems (USA) Pte. Ltd.
Singapore

Europe Headquarters
Cisco Systems International BV Amsterdam,
The Netherlands

Cisco has more than 200 offices worldwide. Addresses, phone numbers, and fax numbers are listed on the Cisco Website at <https://www.cisco.com/go/offices>.

Cisco and the Cisco logo are trademarks or registered trademarks of Cisco and/or its affiliates in the U.S. and other countries. To view a list of Cisco trademarks, go to this URL: <https://www.cisco.com/go/trademarks>. Third-party trademarks mentioned are the property of their respective owners. The use of the word partner does not imply a partnership relationship between Cisco and any other company. (1110R)

Printing instructions

Document: 78-101123-06A0.pdf

Date: JUNE 2023

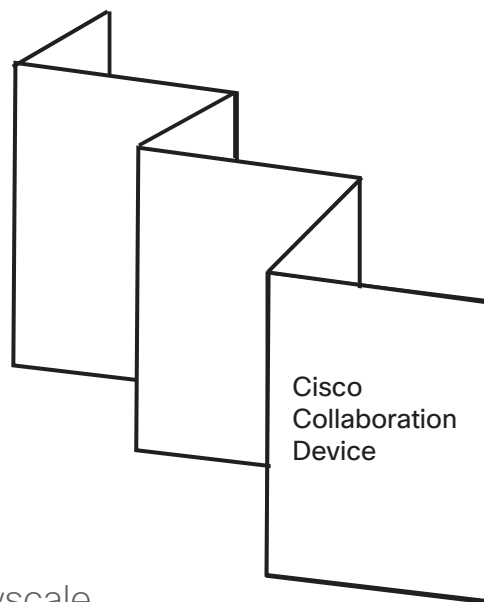
Created by: SWINKER

Comments:

Number of pages: 2

Two sided printing: Yes

Folding: 5 folds, “accordion” folding – pamphlet size after folding: 110 x 160 mm



Printing method: Grayscale

Paper quality: 70 g/m² (or nearest equivalent)

Paper size: 660 x 160 mm, Landscape

Do not archive any files. You must download files from Cisco’s secure external file sharing tool, Doc Exchange, for every printing.

Remove this page before printing

产品中有毒有害物质或元素的名称及含量

部件名称	有毒有害物质或元素					
	铅	汞	镉	六价铬	多溴联苯	多溴二苯醚
金属部件 (包括紧固件)	X	○	○	○	○	○
印刷电路板组件和元件	X	○	○	○	○	○
线缆和线缆组件	X	○	○	○	○	○
塑料和聚合物部件	○	○	○	○	○	○
显示器, 包含灯泡	X	X	○	○	○	○
除印刷电路板外的其他电子组件	X	○	○	○	○	○
光学玻璃材料	X	○	X (透光玻璃)	○	○	○
干电池	○	○	○	○	○	○
本表格依据 SJ/T 11364 的规定编制。						
○: 表示该有毒有害物质在该部件所有均质材料中的含量均在 GB/T 26572 规定的限量要求以下。						
X : 表示该有毒有害物质至少在该部件的某一均质材料中的含量超出 GB/T 26572 规定的限量要求。						
以销售日期为准, 此表显示在“思科系统公司”的电子信息技术产品中何处存在这些有毒有害物质。请注意, 并非上列所有部件都有包含在内装产品中。						
除非产品上另有标记, 所有内附产品及其部件的‘环保使用期限’均由此显示的符号表示。此环保使用期限只适用于产品手册中所规定的使用条件。						



National Restrictions

Restrictions nationales

Государственные ограничения

This section identifies countries that have additional requirements or restrictions.

Cette section présente les pays qui imposent des exigences ou des restrictions supplémentaires.

В данном разделе указаны страны, в которых установлены дополнительные требования или ограничения.

For FCC (US)

Modification Statement (§15.21):

Changes or modifications to the equipment not expressly approved by the party responsible for compliance could void the user's authority to operate the equipment.

Compliance Statement (§15.19):

This device complies with Part 15 of the FCC Rules. Operation is subject to the following two conditions: (1) this device may not cause harmful interference, and (2) this device must accept any interference received, including interference that may cause undesired operation.

Class A Interference Statement (§15.105a):

This equipment has been tested and found to comply with the limits for a Class A digital device, pursuant to Part 15 of the FCC Rules. These limits are designed to provide reasonable protection against harmful interference when the equipment is operated in a commercial environment. This equipment generates, uses, and can radiate radio frequency energy and, if not installed and used in accordance with the instruction manual, may cause harmful interference to radio communications. Operation of this equipment in a residential area is likely to cause harmful interference in which case the user will be required to correct the interference at his own expense.

For IC (Canada)

Interference Statement (RSS-GEN, Section 8.4):

This Device complies with Industry Canada License-exempt RSS standard(s). Operation is subject to the following two conditions: (1) this device may not cause interference, and (2) this device must accept any interference, including interference that may cause undesired operation of the device. 5150–5250 MHz is limited to use indoor only. The use of 5600–5650 MHz is restricted.

Le présent appareil est conforme aux CNR d'Industrie Canada applicables aux appareils radio exempts de licence. L'exploitation est autorisée aux deux conditions suivantes : (1) l'appareil ne doit pas produire de brouillage ; (2) l'appareil doit accepter tout brouillage radioélectrique subi, même si le brouillage est susceptible d'en compromettre le fonctionnement. 5150–5250 MHz est limitée à une utilisation en intérieur uniquement. L'utilisation de la fréquence 5600–5650 MHz est restreinte.

Declaración para México

La operación de este equipo está sujeta a las siguientes dos condiciones.

1. Es posible que este equipo o dispositivo no cause interferencia perjudicial.

2. Este equipo o dispositivo debe aceptar cualquier interferencia. Incluyendo la que pueda causar su operación no deseada.

Exposure statement (§2.1091) (US, Canada)

To comply with FCC/IC RF exposure limits for general population / uncontrolled exposure, the antennas used for this transmitter must be installed to provide a separation distance of at least 20 cm from all persons and must not be co-located or operating in conjunction with any other antenna or transmitter.

Pour se conformer aux limites d'exposition RF

de la FCC / IC pour la population générale / exposition incontrôlée, les antennes utilisées pour cet émetteur doivent être installées pour assurer une distance de séparation d'au moins 20 cm de toutes les personnes et ne doivent pas être localisées ou en combinaison avec toute autre antenne ou émetteur.

EU Directive 2014/53/EU - Compliance Information for the Cisco Collaboration series Wireless LAN products.

Scope

The information in this document is applicable to the Cisco Collaboration series wireless LAN products that currently includes the DX series, Room series and Cisco Spark Board. These products are intended to be placed on the market within the European Union, Lichtenstein, Switzerland, Iceland, Norway, Turkey and other countries that have implemented the EU Directive 2014/53/EU.

Simplified EU Declaration of Conformity

This declaration is only valid for configurations (combinations of software, firmware and hardware) provided and/or supported by Cisco Systems for use within the EU or countries that have implemented the EU Directives and/or spectrum regulation. The use of software or firmware not supported/provided by Cisco Systems may result that the equipment is no longer compliant with the regulatory requirements.

Български [Bulgarian]: Това оборудване отговаря на съществените изисквания и приложими клаузи на Директива 2014/53/ЕС.

Česky [Czech]: Toto zařízení je v souladu se základními požadavky a ostatními podmínkami ustanovenými Směrnicí 2014/53/EU.

Dansk [Danish]: Dette udstyr er i overensstemmelse med de væsentlige krav og andre relevante bestemmelser i Direktiv 2014/53/EU.

Deutsch [German]: Dieses Gerät entspricht den grundlegenden Anforderungen und den weiteren entscheidenden Vorgaben der Richtlinie 2014/53/EU.

Eesti [Estonian]: See seade vastab Direktiivi 2014/53/EL oluliste nõuetele ja teistele asjakohastele sätetele.

English: This equipment is in compliance with the essential requirements and other relevant provisions of Directive 2014/53/EU.

Español [Spanish]: Este equipo cumple con los requisitos esenciales así como con otras disposiciones de la Directiva 2014/53/UE.

Ελληνική [Greek]: Αυτός ο εξοπλισμός είναι σε συμμόρφωση με τις ουσιαστικές απαιτήσεις και άλλες σχετικές διατάξεις της Οδηγίας 2014/53/ΕΕ.

Français [French]: Cet appareil est conforme aux exigences essentielles et aux autres dispositions pertinentes de la Directive 2014/53/UE.

Hrvatski [Croatian]: Ova oprema je u skladnosti s bitnim zahtjevima i drugim relevantnim odredbama Direktive 2014/53/EU.

Íslenska [Icelandic]: Þetta tæki er samkvæmt grunnkröfum og öðrum viðeigandi ákvæðum Tilskipunar 2014/53/EU.

Italiano [Italian]: Questo apparato è conforme ai requisiti essenziali ed agli altri principi sanciti dalla Direttiva 2014/53/UE.

Latviski [Latvian]: Šī iekārta atbilst Direktīvas 2014/53/ES būtiskajām prasībām un citiem ar to saistītajiem noteikumiem.

Lietuvių [Lithuanian]: Šis įrenginys tenkina 2014/53/ES Direktyvos esminius reikalavimus ir kitas šios direktyvos nuostatas.

Nederlands [Dutch]: Dit apparaat voldoet aan de essentiële eisen en andere van toepassing zijnde bepalingen van de Richtlijn 2014/53/EU.



Malti [Maltese]: Dan l-apparat huwa konformi mal-htigiet essenzjali u l-provedimenti l-ohra rilevanti tad-Direttiva 2014/53/UE.

Magyar [Hungarian]: Ez a készülék teljesíti az alapvető követelményeket és más 2014/53/EU irányelvben meghatározott vonatkozó rendelkezéseket.

Norsk [Norwegian]: Dette utstyret er i samsvar med de grunnleggende krav og andre relevante bestemmelser i EU-direktiv 2014/53/UE.

Polski [Polish]: Urządzenie jest zgodne z ogólnymi wymaganiami oraz szczegółowymi warunkami określonymi Dyrektywą UE: 2014/53/UE.

Português [Portuguese]: Este equipamento está em conformidade com os requisitos essenciais e outras provisões relevantes da Directiva 2014/53/UE.

Română [Romanian]: Acest echipament este în conformitate cu cerințele esențiale și cu alte prevederi relevante ale Directivei 2014/53/UE.

Slovensko [Slovenian]: Ta naprava je skladna z bistvenimi zahtevami in ostalimi relevantnimi pogoji Direktive 2014/53/EU.

Slovensky [Slovak]: Toto zariadenie je v zhode so základnými požiadavkami a inými príslušnými nariadeniami direktív: 2014/53/EU.

Suomi [Finnish]: Tämä laite täyttää direktiivin 2014/53/EU olennaiset vaatimukset ja on siinä asetettujen muiden laitetta koskevien määräysten mukainen.

Svenska [Swedish]: Denna utrustning är i överensstämmelse med de väsentliga kraven och andra relevanta bestämmelser i Direktiv 2014/53/EU.

Türk [Turkish]: Bu cihaz 2014/53/EU Direktifi'nin temel gereklere ve ilgili diğer hükümlerine uygundur.

Note: The full declaration of conformity for these products can be found:

• **Cisco Room Kit:** <https://www.cisco.com/web/dofc/11580633.pdf>

• **Cisco Room Kit Mini:** <https://www.cisco.com/web/dofc/115708585.pdf>

• **Cisco Codec Plus:** <https://www.cisco.com/web/dofc/111580590.pdf>

• **Cisco Codec Pro:** <https://www.cisco.com/web/dofc/13510636.pdf>

• **Cisco Codec EQ (TTC6-15):** <https://www.cisco.com/web/dofc/EU90135.pdf>

• **Cisco Room 55:** <https://www.cisco.com/web/dofc/11676060.pdf>

• **Cisco Room 55 Dual:** <https://www.cisco.com/web/dofc/14982501.pdf>

• **Cisco Room 70:** <https://www.cisco.com/web/dofc/11889510.pdf>

• **Cisco Room 70 G2:** <https://www.cisco.com/web/dofc/15041520.pdf>

• **Cisco Room 70 Panorama:** <https://www.cisco.com/web/dofc/15041520.pdf>

• **Cisco Room Panorama:** <https://www.cisco.com/web/dofc/13510636.pdf>
<https://www.cisco.com/web/dofc/EU82940.pdf>

• **Cisco Board 55:** <https://www.cisco.com/web/dofc/11530677.pdf>

• **Cisco Board 55S:** <https://www.cisco.com/web/dofc/15570334.pdf>

• **Cisco Board 70:** <https://www.cisco.com/web/dofc/11653359.pdf>

• **Cisco Board 70S:** <https://www.cisco.com/web/dofc/15570336.pdf>

• **Cisco Board 85S:** <https://www.cisco.com/web/dofc/15612170.pdf>

• **Cisco Desk Pro:** <https://www.cisco.com/web/dofc/18745436.pdf>

• **Cisco Room Bar:** <https://www.cisco.com/web/dofc/22921945.pdf>
Contains FCC ID: LDK073002357 Contains IC ID: 2461N-073002357

• **Cisco Room Bar Pro (TTC4-01):** <https://www.cisco.com/web/dofc/EU92051.pdf>

• **Cisco Board Pro 55:** <https://www.cisco.com/web/dofc/22241423.pdf>
WiFi/BT, contains FCC ID: LDKNVTX21737 and contains IC ID: 2461N-NVTX21737 24 GHz (radar), FCC ID: LDK603102338 and IC ID: 2461N-603102338

• **Cisco Board Pro 75:** <https://www.cisco.com/web/dofc/22540558.pdf>
WiFi/BT, contains FCC ID: LDKNVTX21737 and contains IC ID: 2461N-NVTX21737 24 GHz (radar), FCC ID: LDK603202337 and IC ID: 2461N-603202337

• **Cisco Board Pro 55 G2:** <https://www.cisco.com/web/dofc/xxxxxxxxxx.pdf>
WiFi/BT, contains FCC ID: LDKXV2EA2797 and contains IC ID: 2461N-XV2EA2797 24 GHz (radar), FCC ID: LDK603102338 and IC ID: 2461N-603102338

• **Cisco Board Pro 75 G2:** <https://www.cisco.com/web/dofc/xxxxxxxxxx.pdf>
WiFi/BT, contains FCC ID: LDKXV2EA2797 and contains IC ID: 2461N-XV2EA2797 24 GHz (radar), FCC ID: LDK603202337 and IC ID: 2461N-603202337

учетные данные Cisco.com. Если у вас нет учетной записи, вам необходимо зарегистрироваться на Cisco.com.

EMC Class A declaration

WARNING: This is a class A product. In a domestic environment this product may cause radio interference in which case the user may be required to take adequate measures.

声明

此为A级产品, 在生活环境中, 该产品可能会造成无线电干扰。在这种情况下, 可能需要用户对其干扰采取切实可行的措施。

Cisco.com login is required to access these documents. You can register for a Cisco.com account if you don't have one.

Une connexion à Cisco.com est nécessaire pour accéder à ce document. Si vous ne disposez pas d'un compte Cisco.com, enregistrez vous pour en obtenir un.
Для доступа к этому документу требуются

Art. 5th – Resolution No 680/2017 (Brazil)

Este equipamento não tem direito à proteção contra interferência prejudicial e não pode causar interferência em sistemas devidamente autorizados.

This equipment is not entitled to the protection from harmful interference and may not cause interference with duly authorized systems.

Cisco and the Cisco logo are trademarks or registered On our web site you will find an overview of the worldwide Cisco contacts.

Go to: <https://www.cisco.com/web/siteassets/contacts>

Corporate Headquarters
Cisco Systems, Inc.
170 West Tasman Dr.
San Jose, CA 95134 USA

Cisco and the Cisco logo are trademarks or registered trademarks of Cisco and/or its affiliates in the U.S. and other countries. To view a list of Cisco trademarks, go to this URL: www.cisco.com/go/trademarks. Third-party trademarks mentioned are the property of their respective owners. The use of the word partner does not imply a partnership relationship between Cisco and any other company. (1110R)

Cisco et le logo Cisco sont des marques commerciales enregistrées ou non de Cisco Systems, Inc., et/ou de ses filiales aux États-Unis et dans d'autres pays. Pour afficher la liste des marques de commerce de Cisco, visitez le site : www.cisco.com/go/trademarks. Les autres marques mentionnées sont la propriété de leur détenteur respectif. L'utilisation du mot « partenaire » ne signifie aucunement qu'il existe une relation de partenariat entre Cisco et une autre société. (1110R)

Cisco и логотип Cisco являются товарными знаками или зарегистрированными товарными знаками корпорации Cisco и/или ее дочерних компаний в США и других странах. Чтобы просмотреть перечень товарных знаков корпорации Cisco, перейдите по следующему URL-адресу: www.cisco.com/go/trademarks. Товарные знаки сторонних организаций, упомянутые в настоящем документе, являются собственностью соответствующих владельцев. Использование слова «партнер» не подразумевает наличия партнерских взаимоотношений между Cisco и любой другой компанией. (1110R)



Cisco Collaboration Device Safety Information

Information sur la Sécurité



Where to Find Product Documentation

Product Information

https://help.webex.com
https://www.cisco.com/go/telepresence/docs

Warranty Information

https://www.cisco.com/go/warranty

Regulatory, Compliance, and Safety Information

https://www.cisco.com/go/telepresence/docs

End User License Agreement and License Information

https://www.cisco.com/go/eula
https://www.cisco.com/go/license

Antennas

The device has integrated antennas which cannot be replaced.

Radio Channels

The phones use World Mode (802.11d) to determine operating channels and transmit powers.

Intended Use

This product is a collaboration endpoint for use primarily in an office environment.

For indoor use only.

Installation

Minimum separation distance: 20 cm/ 7.9 in

Où trouver la documentation du produit

Informations sur le produit
https://help.webex.com

https://www.cisco.com/go/telepresence/docs

Informations sur la garantie
https://www.cisco.com/ca/allergarantie

Informations relatives à la conformité et à la sécurité

https://www.cisco.com/go/telepresence/docs

Contrat de licence de l'utilisateur final et informations sur la licence

https://www.cisco.com/go/eula
https://www.cisco.com/go/license

Pour consulter les documents en français (y compris les nouveautés), identifiez-vous :

https://www.cisco.com/cisco/web/CA/fr/support/index.html

Antennes

L'appareil comprend des antennes intégrées qui ne peuvent être remplacées.

Canaux radio

Les téléphones utilisent la norme mondiale (802.11d) pour déterminer les canaux en fonctionnement et les puissances d'émission.

Fonction prévue

Ce produit est un terminal de collaboration destiné à être utilisé principalement dans un environnement de bureau.

Destiné uniquement pour un usage en intérieur.

Installation

Distance de séparation minimale : 20 cm

Где найти документацию по продукту

Информация о продукте
https://help.webex.com

https://www.cisco.com/go/telepresence/docs

Информация о гарантии
https://www.cisco.com/go/warranty

Информация о безопасности и соблюдении нормативных требований

https://www.cisco.com/go/telepresence/docs

Лицензионное соглашение конечного пользователя и информация о лицензии

https://www.cisco.com/go/eula
https://www.cisco.com/go/license

Дополнительную информацию на русском языке можно получить на сайте

Антенны

Устройство оснащено встроенными антеннами, которые не подлежат замене.

Радиоканалы

Для определения рабочих каналов и мощности передачи телефоны используют режим World Mode (802.11d).

Предполагаемое использование

Этот продукт представляет собой оконечное устройство для совместной работы и в первую очередь предназначен для использования в офисной среде.

Только для использования внутри помещений.

Установка

Минимальный промежуток: 20 см

Safety Instructions – Warnings

Informations sur la sécurité – Avertissements

English [EN]: Read the installation instructions before using, installing or connecting the system to the power source.

Only trained and qualified personnel should be allowed to install, replace, or service this equipment.

Ultimate disposal of this product should be handled according to all national laws and regulations.

No user-serviceable parts inside. To avoid risk of electric shock, do not open.

Installation of the equipment must comply with local and national electrical codes.

Bulgarian [BG]: Прочетете инструкциите за инсталация преди използването, инсталирането или свързването на системата към електрозахранването.

Разрешено е само на обучен и квалифициран персонал да инсталира, заменя или да обслужва това оборудване.

Изхвърлянето на този продукт трябва да се направи като се следват всички национални закони и разпоредби.

Не съдържа части, които могат да се обслужват от потребителите. За да избегнете риска от електрически удар, не отваряйте.

Инсталирането на оборудването трябва да съответства на местните и националните електрически изисквания.

Интсталирането на оборудването трябва да се извършва от обучен и квалифициран персонал. За да избегнете риска от електрически шок, не отваряйте.

Интсталирането на оборудването трябва да съответства на местните и националните електрически изисквания.

Инсталирането на оборудването трябва да се извършва от обучен и квалифициран персонал. За да избегнете риска от електрически шок, не отваряйте.

Инсталирането на оборудването трябва да се извършва от обучен и квалифициран персонал. За да избегнете риска от електрически шок, не отваряйте.



Where to Find Product Documentation

Product Information
https://help.webex.com
https://www.cisco.com/go/telepresence/docs

Warranty Information
https://www.cisco.com/go/warranty

Regulatory, Compliance, and Safety Information
https://www.cisco.com/go/telepresence/docs

End User License Agreement and License Information
https://www.cisco.com/go/eula
https://www.cisco.com/go/license

Antennas

The device has integrated antennas which cannot be replaced.

Radio Channels

The phones use World Mode (802.11d) to determine operating channels and transmit powers.

Intended Use

This product is a collaboration endpoint for use primarily in an office environment.

Installation

Minimum separation distance: 20 cm/ 7.9 in

〈製品仕様における安全上のご注意〉

シスコ製品をご使用になる前に安全上の注意をご確認ください。

http://www.cisco.com/web/JP/techdoc/index.html

接続ケーブル、電源コードセット、ACアダプタ、バッテリーなどの部品は、必ず添付品または指定品をご使用ください。添付品・指定品以外をご使用になると故障や動作不良、火災の原因となります。また、電源コードセットは弊社が指定する製品以外の電気機器には使用できないためご注意ください。

接続ケーブル、電源コードセット、ACアダプタ、バッテリーなどの部品は、必ず添付品または指定品をご使用ください。添付品・指定品以外をご使用になると故障や動作不良、火災の原因となります。また、電源コードセットは弊社が指定する製品以外の電気機器には使用できないためご注意ください。

接続ケーブル、電源コードセット、ACアダプタ、バッテリーなどの部品は、必ず添付品または指定品をご使用ください。添付品・指定品以外をご使用になると故障や動作不良、火災の原因となります。また、電源コードセットは弊社が指定する製品以外の電気機器には使用できないためご注意ください。

接続ケーブル、電源コードセット、ACアダプタ、バッテリーなどの部品は、必ず添付品または指定品をご使用ください。添付品・指定品以外をご使用になると故障や動作不良、火災の原因となります。また、電源コードセットは弊社が指定する製品以外の電気機器には使用できないためご注意ください。

接続ケーブル、電源コードセット、ACアダプタ、バッテリーなどの部品は、必ず添付品または指定品をご使用ください。添付品・指定品以外をご使用になると故障や動作不良、火災の原因となります。また、電源コードセットは弊社が指定する製品以外の電気機器には使用できないためご注意ください。

接続ケーブル、電源コードセット、ACアダプタ、バッテリーなどの部品は、必ず添付品または指定品をご使用ください。添付品・指定品以外をご使用になると故障や動作不良、火災の原因となります。また、電源コードセットは弊社が指定する製品以外の電気機器には使用できないためご注意ください。

接続ケーブル、電源コードセット、ACアダプタ、バッテリーなどの部品は、必ず添付品または指定品をご使用ください。添付品・指定品以外をご使用になると故障や動作不良、火災の原因となります。また、電源コードセットは弊社が指定する製品以外の電気機器には使用できないためご注意ください。

Taiwan

取得審驗證明之低功率射頻器材，非經核准，公司、商號或使用者均不得擅自變更頻率、加大功率或變更原設計之特性及功能。低功率射頻器材之使用不得影響飛航安全及干擾合法通信；經發現有干擾現象時，應立即停用，並改善至無干擾時方得繼續使用。前述合法通信，指依電信管理法規定作業之無線電通信。低功率射頻器材須忍受合法通信或工業、科學及醫療用電波輻射性電機設備之干擾。

應避免影響附近雷達系統之操作。

1.使用過度恐傷害視力。
2.視力保護注意事項:
a. 使用30分鐘請休息10分鐘。
b.未滿2歲幼兒不看螢幕，2歲以上每天看螢幕不要超過1小時。

Where to Find Product Documentation

Product Information
https://help.webex.com
https://www.cisco.com/go/telepresence/docs

Warranty Information
https://www.cisco.com/go/warranty

Regulatory, Compliance, and Safety Information
https://www.cisco.com/go/telepresence/docs

End User License Agreement and License Information
https://www.cisco.com/go/eula
https://www.cisco.com/go/license

Antennas

The device has integrated antennas which cannot be replaced.

Radio Channels

The phones use World Mode (802.11d) to determine operating channels and transmit powers.

Intended Use

This product is a collaboration endpoint for use primarily in an office environment.

Installation

Minimum separation distance: 20 cm/ 7.9 in

Where to Find Product Documentation

Product Information
https://help.webex.com
https://www.cisco.com/go/telepresence/docs

Warranty Information
https://www.cisco.com/go/warranty

Regulatory, Compliance, and Safety Information
https://www.cisco.com/go/telepresence/docs

End User License Agreement and License Information
https://www.cisco.com/go/eula
https://www.cisco.com/go/license

Antennas

The device has integrated antennas which cannot be replaced.

Radio Channels

The phones use World Mode (802.11d) to determine operating channels and transmit powers.

Apenas pessoal treinado e qualificado deve ser autorizado a instalar, substituir ou fazer a revisão deste equipamento.

Deitar fora este produto em conformidade com todas as leis e regulamentos nacionais.

Não existem peças no interior que possam ser reparadas pelo usuário. Há riscos de choque. Não abra.

A instalação do equipamento tem de estar em conformidade com os códigos elétricos locais e nacionais.

Romanian [RO]: Citiți instrucțiunile de montare înainte de a utiliza, instala sau conecta sistemul la sursa de alimentare.

Instalarea, înlocuirea sau lucrările de service pentru acest echipament trebuie efectuate numai de personal instruit și calificat.

Acest produs trebuie reciclat în conformitate cu toate legile și reglementările naționale.

Nu conține piese ce pot fi reparate de către utilizator. Pentru a evita riscul de electrocutare, nu deschideți.

Instalarea echipamentului trebuie să fie efectuată în conformitate cu codurile electrice locale și naționale.

Spanish [ES]: Lea las instrucciones de instalación antes de usar, instalar o conectar el sistema a la fuente de alimentación.

Solamente el personal calificado debe instalar, reemplazar o utilizar este equipo.

Al deshacerse por completo de este producto debe seguir todas las leyes y reglamentos nacionales.

El interior no contiene ninguna pieza que el usuario pueda reparar/mantener. Para evitar el riesgo de sufrir descargas eléctricas, no lo abra.

La instalación del equipo debe cumplir con las normativas de electricidad locales y nacionales.

Swedish [SE]: Läs monteringsinstruktionerna innan du använder, installerar eller ansluter systemet till en strömkälla.

Endast utbildad och kvalificerad personal bör få tillåtelse att installera, byta ut eller reparera denna utrustning.

Vid deponering hanteras produkten enligt gällande lagar och bestämmelser.

Innehåller inga delar som användaren kan utföra service på. Låt bli att öppna för att undvika stötar.

Installation av utrustningen måste ske i enlighet med gällande elinstallationsföreskrifter.

Slovakian [SK]: Pred použitím, inštaláciou alebo pripojením systému ku zdroju elektrickej energie si prečítajte pokyny na inštaláciu.

Inštalovať a vymieňať zariadenie alebo vykonávať jeho servis smú len vyškolení a kvalifikovaní pracovníci.

Konečná likvidácia tohto výrobku by sa mala vykonávať podľa všetkých štátnych právnych predpisov.

Vo vnútri sa nenachádzajú žiadne diely, ktorých údržbu či opravu by mohol vykonať používateľ. Zariadenie neatvárať. Zabráňte tým riziku zasiahnutia elektrickým prúdom.

Inštalácia zariadenia musí byť v súlade s miestnymi a štátnymi elektrotechnickými normami.

Slovenian [SL]: Znotraj ni delov, ki bi jih lahko servisirali uporabniki Da bi preprečili električni šok, ne odpirajte.

To opremo lahko nameščajo, zamenjuje ali servisirajo samo pooblaščen osebe.

Lizdelek zavržite skladno z vsemi nacionalnimi predpisi in zakonodajo.

Innehåller inga delar som användaren kan utföra service på. Låt bli att öppna för att undvika stötar.

Namestitev opreme mora biti skladna z vsemi lokalnimi in nacionalnimi električnimi predpisi.