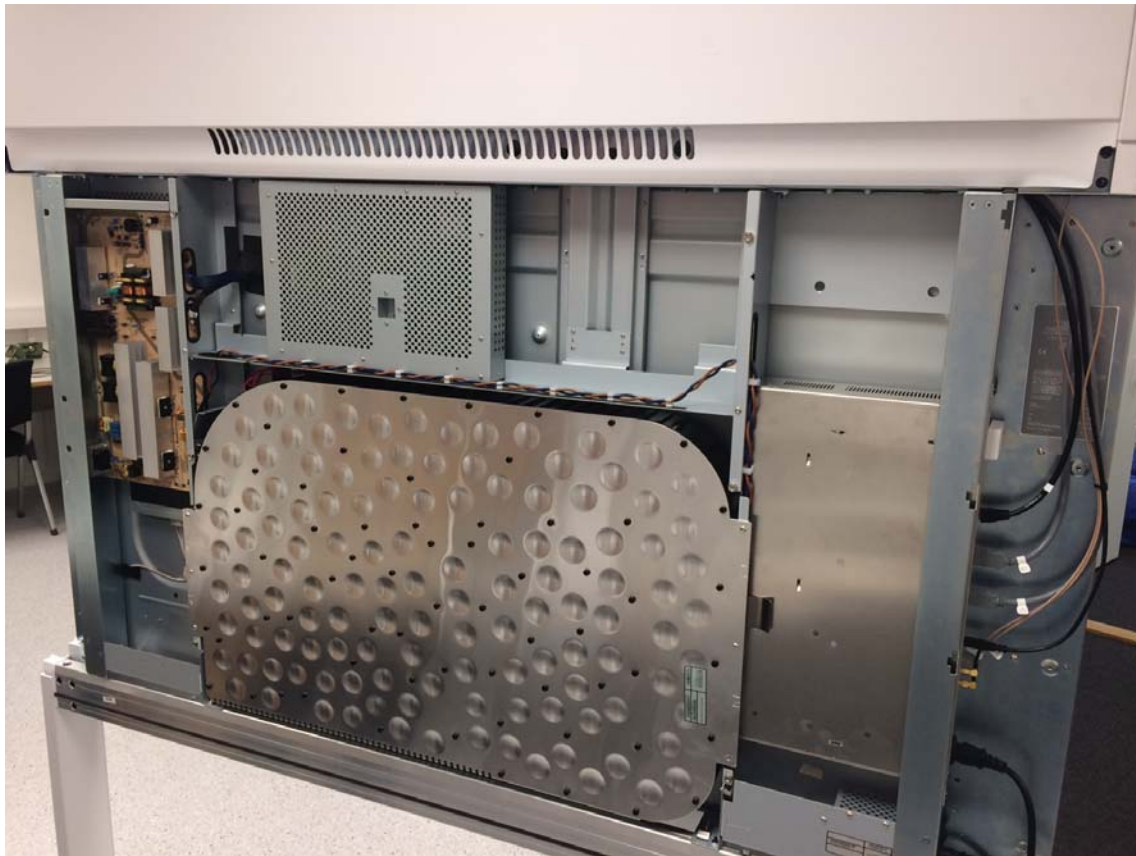




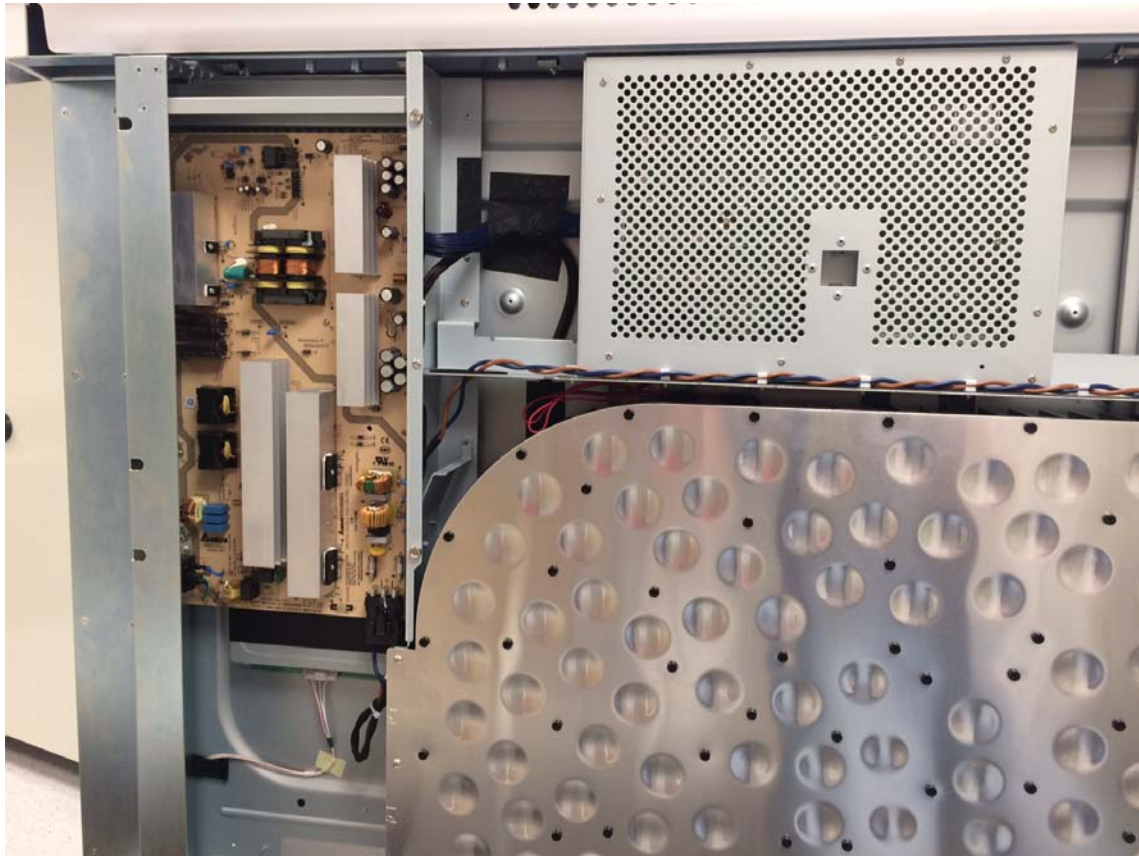
Close up, Camera module.



TTC60-24 single monitor



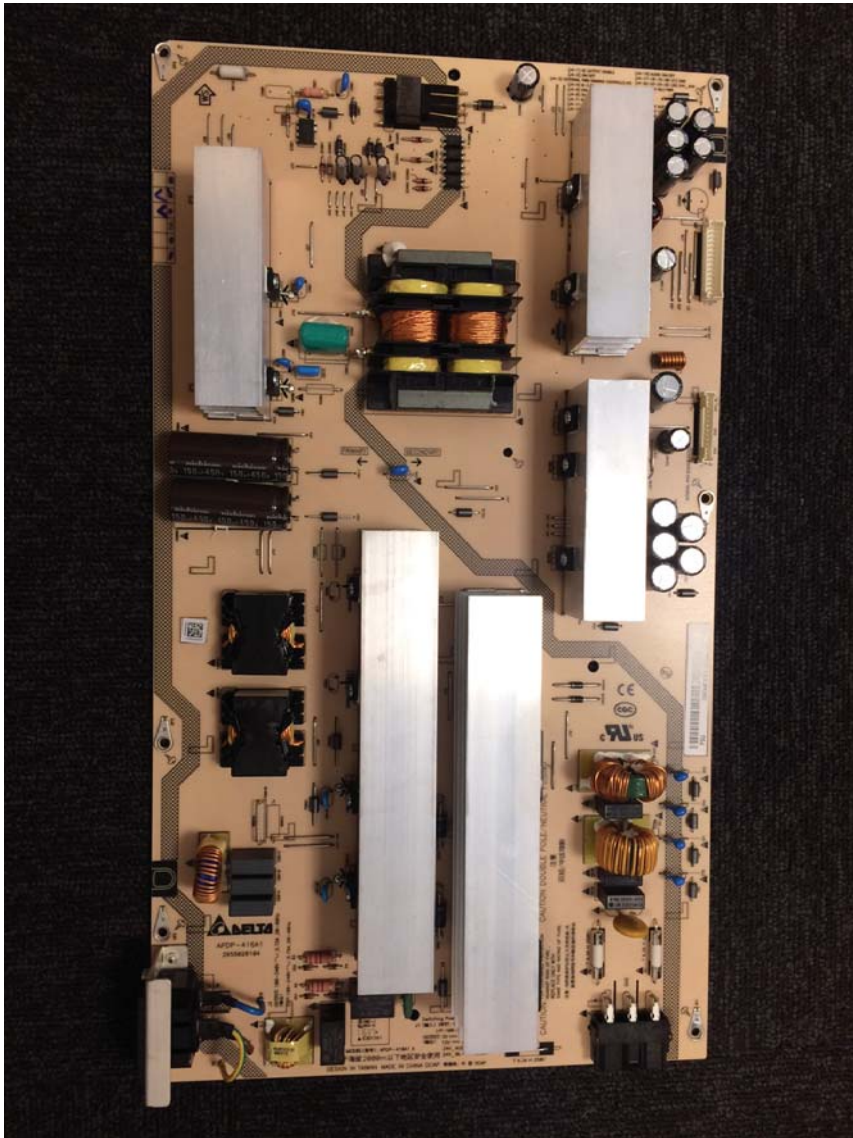
TTC60-24 dual monitor



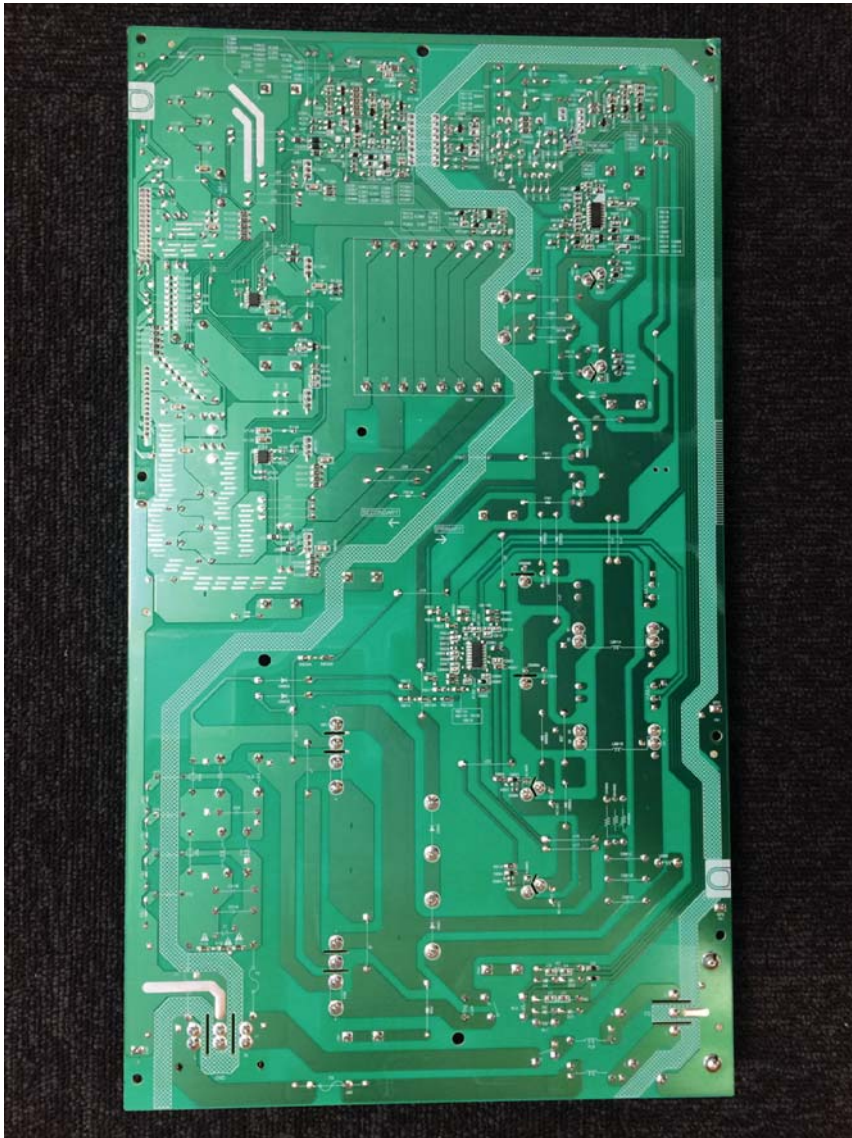
Close up, MMB (media board inside EMC shield) and PSU.



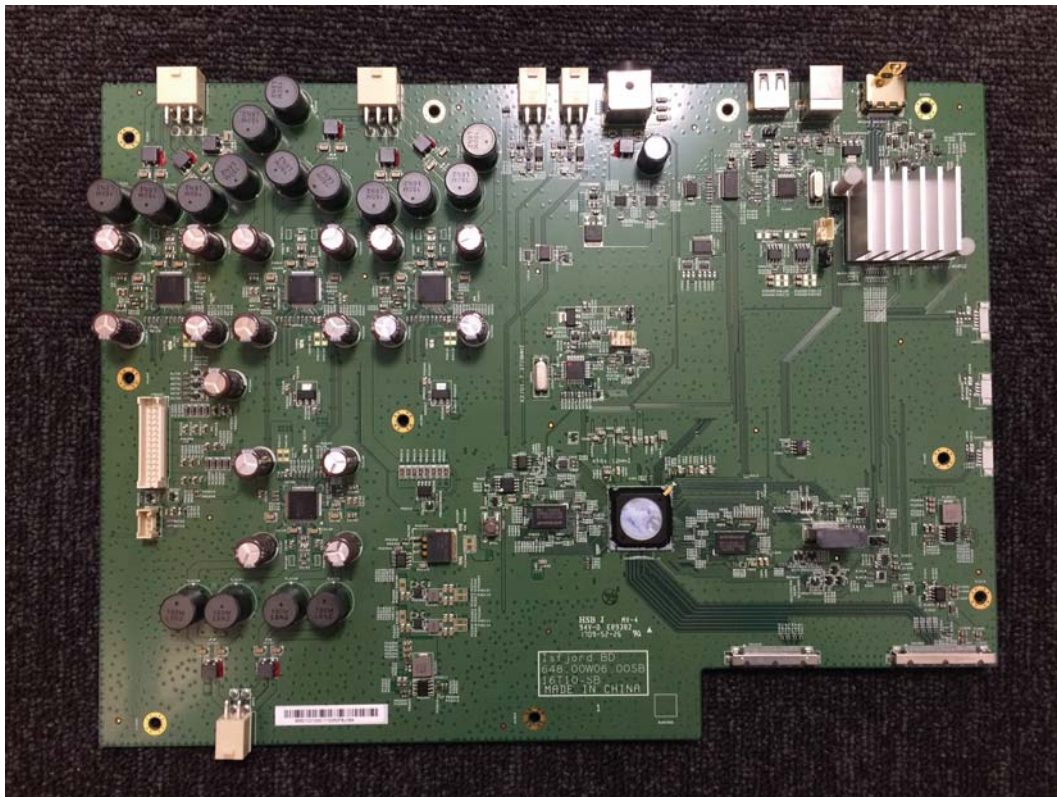
Close up, MMB (media board)



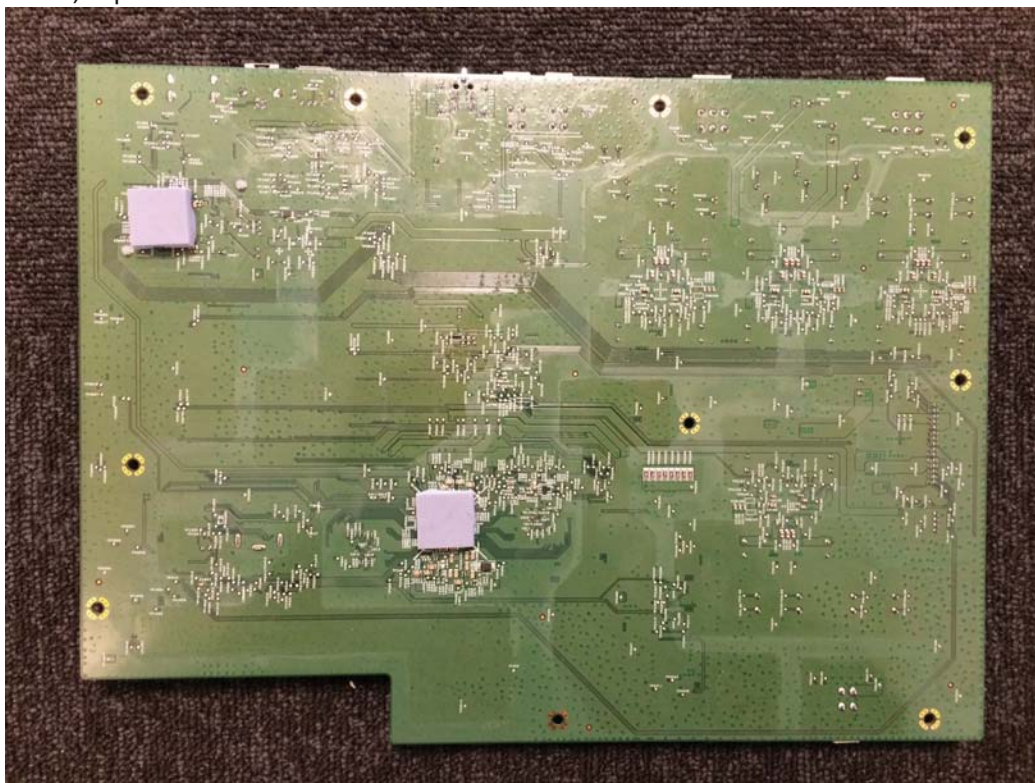
PSU top side



PSU, bottom side



MMB, top side



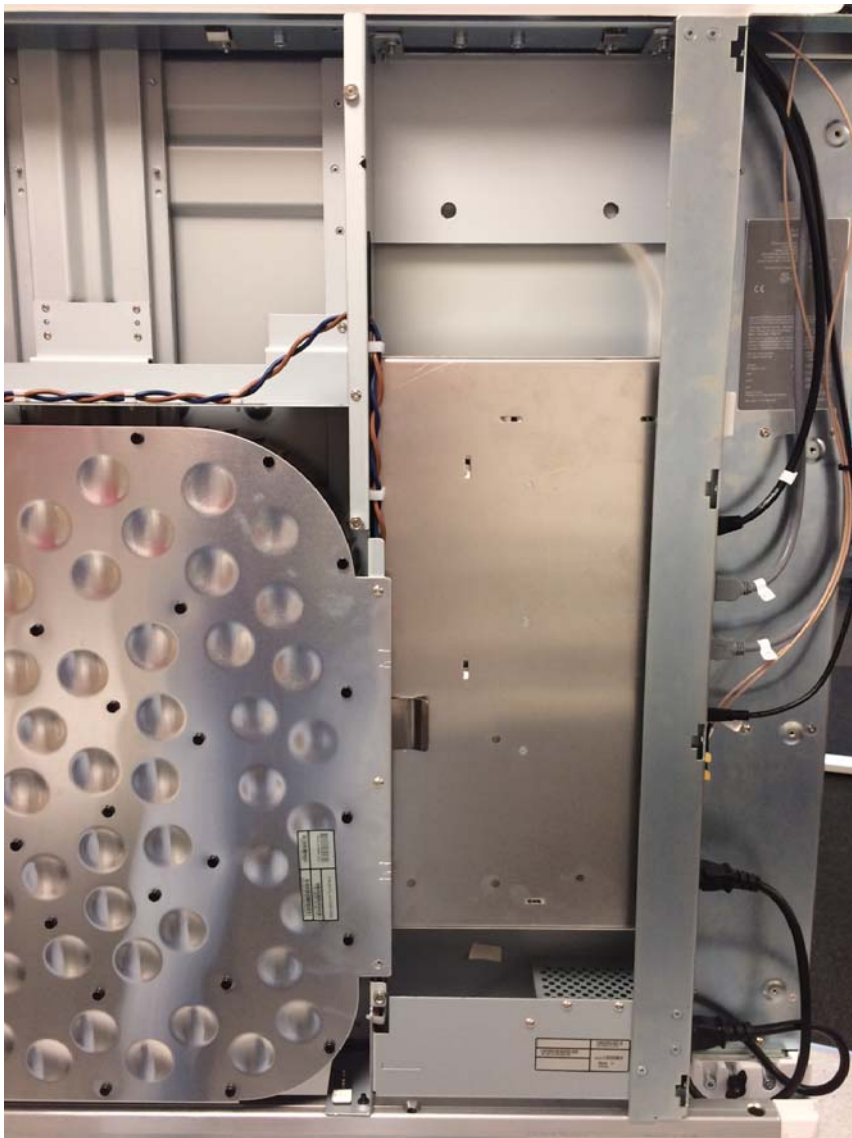
MMB, bottom side



Antenna #1 PCB



Antenna #2 PCB

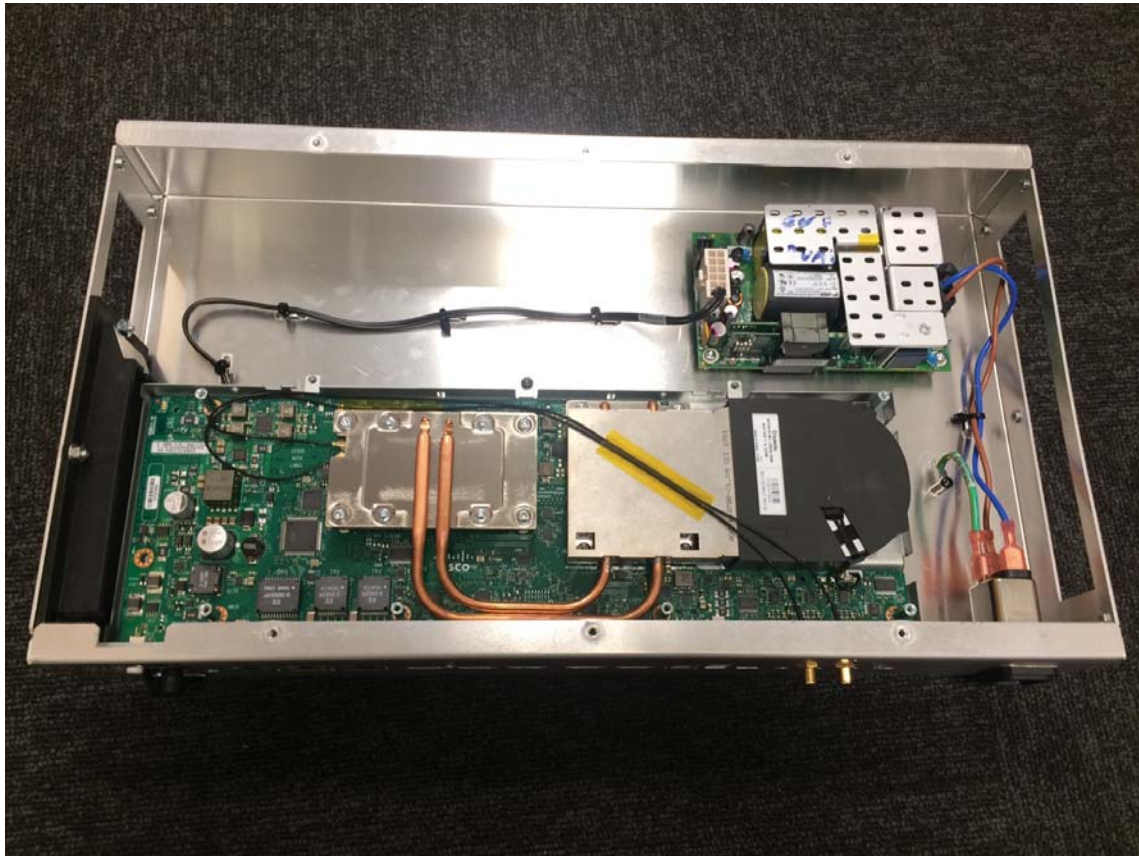


Close up, codec

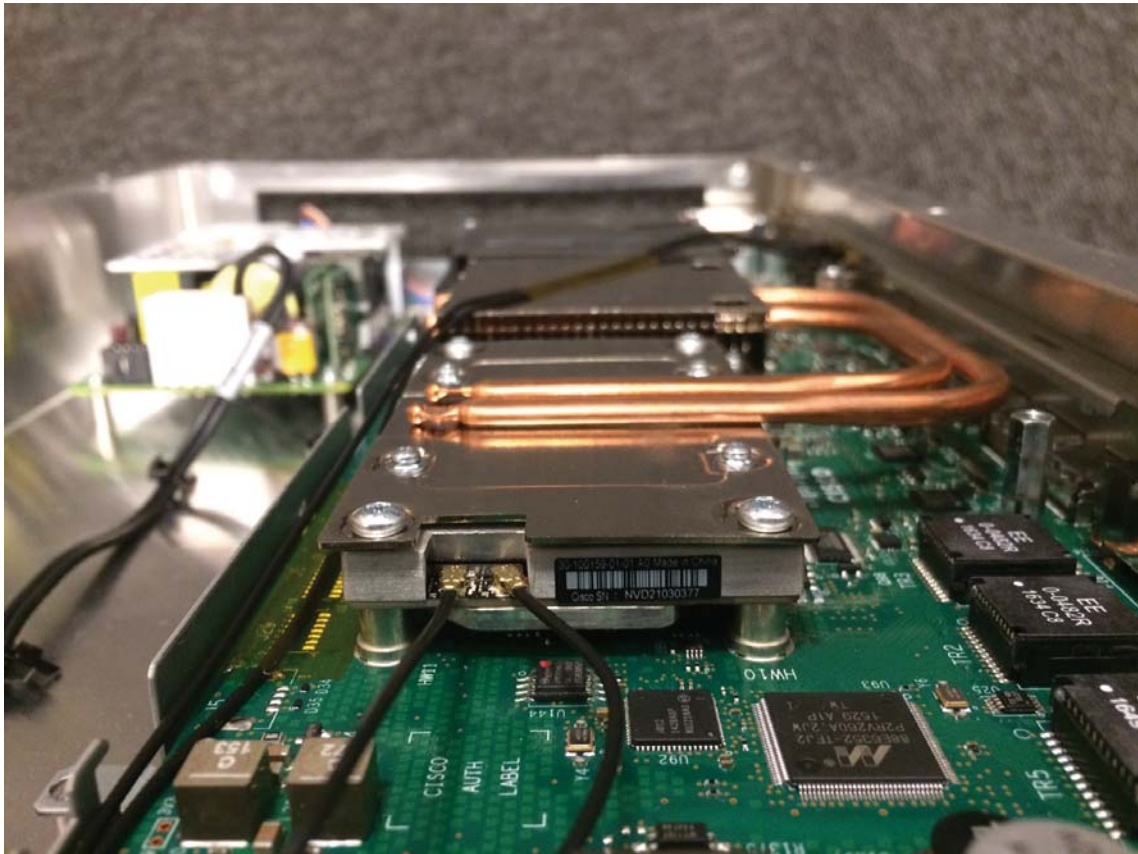




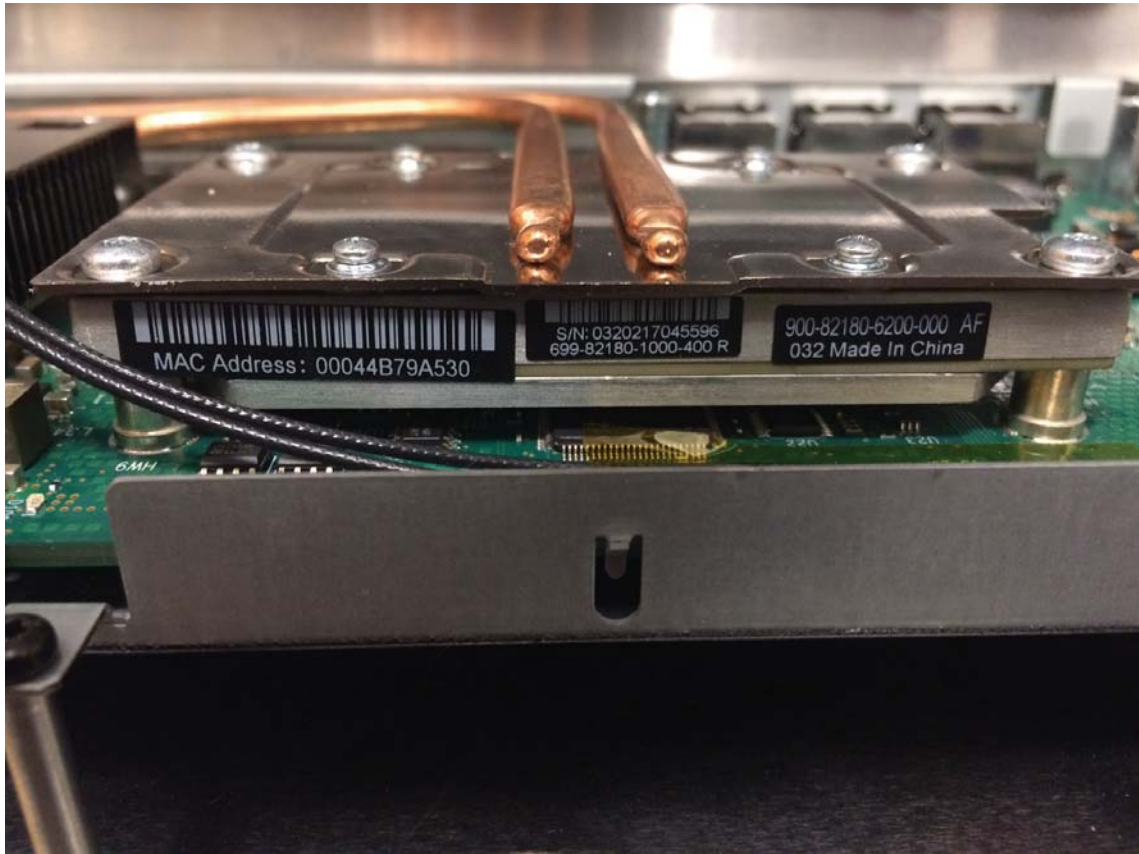
Codec internal photo 1



Codec internal photo 2



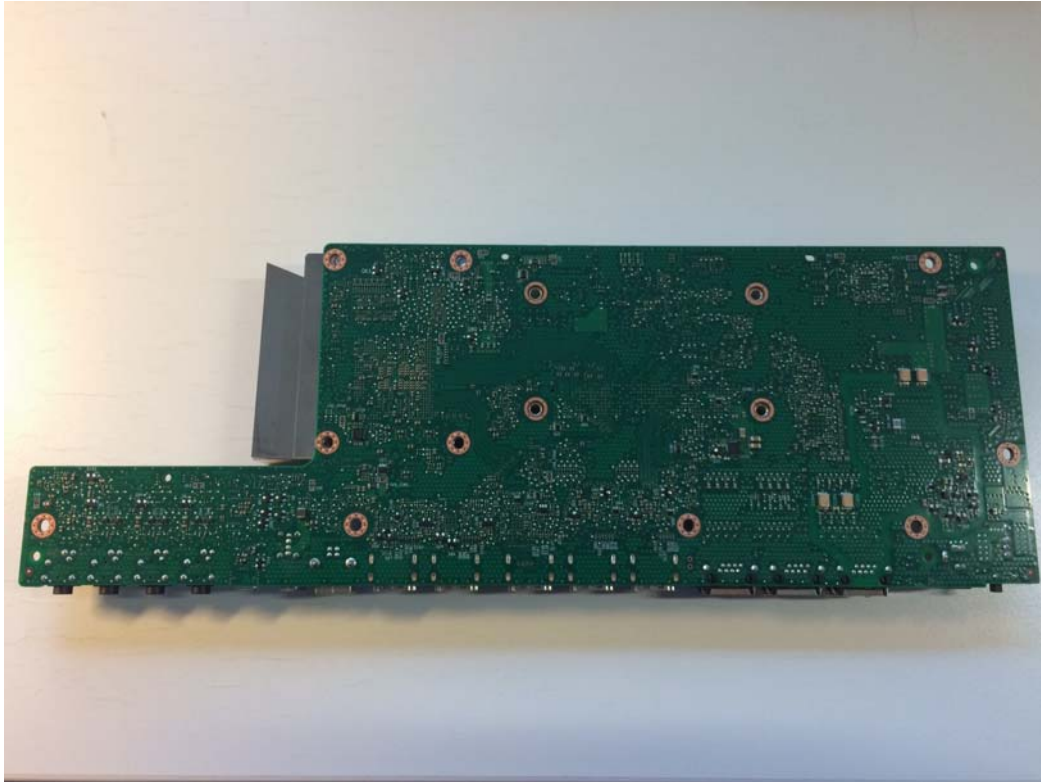
Radio module close up 1



Radio module close up 2



Codec PCB top



Codec PCB bottom

Camera module pictures:



