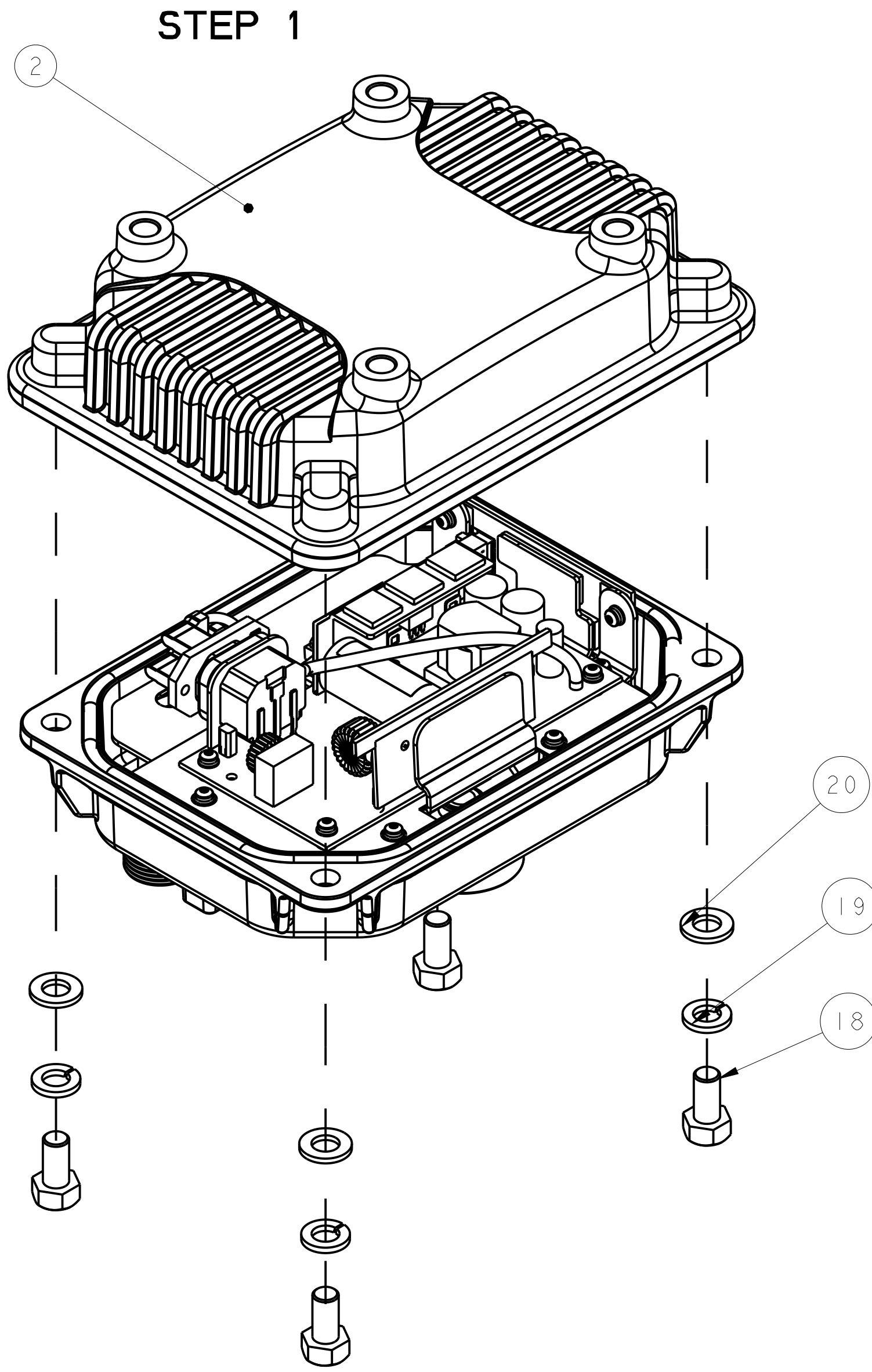
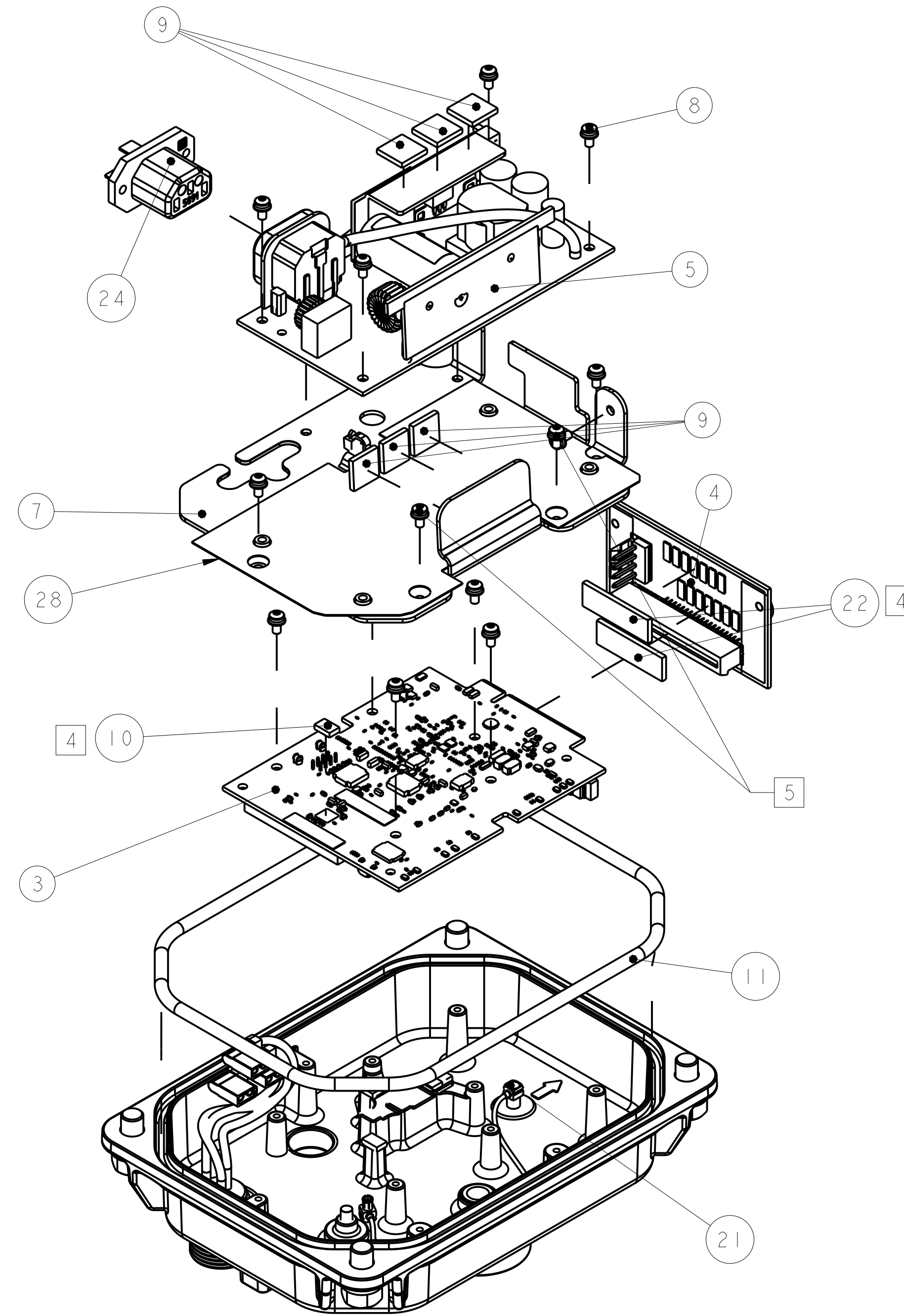
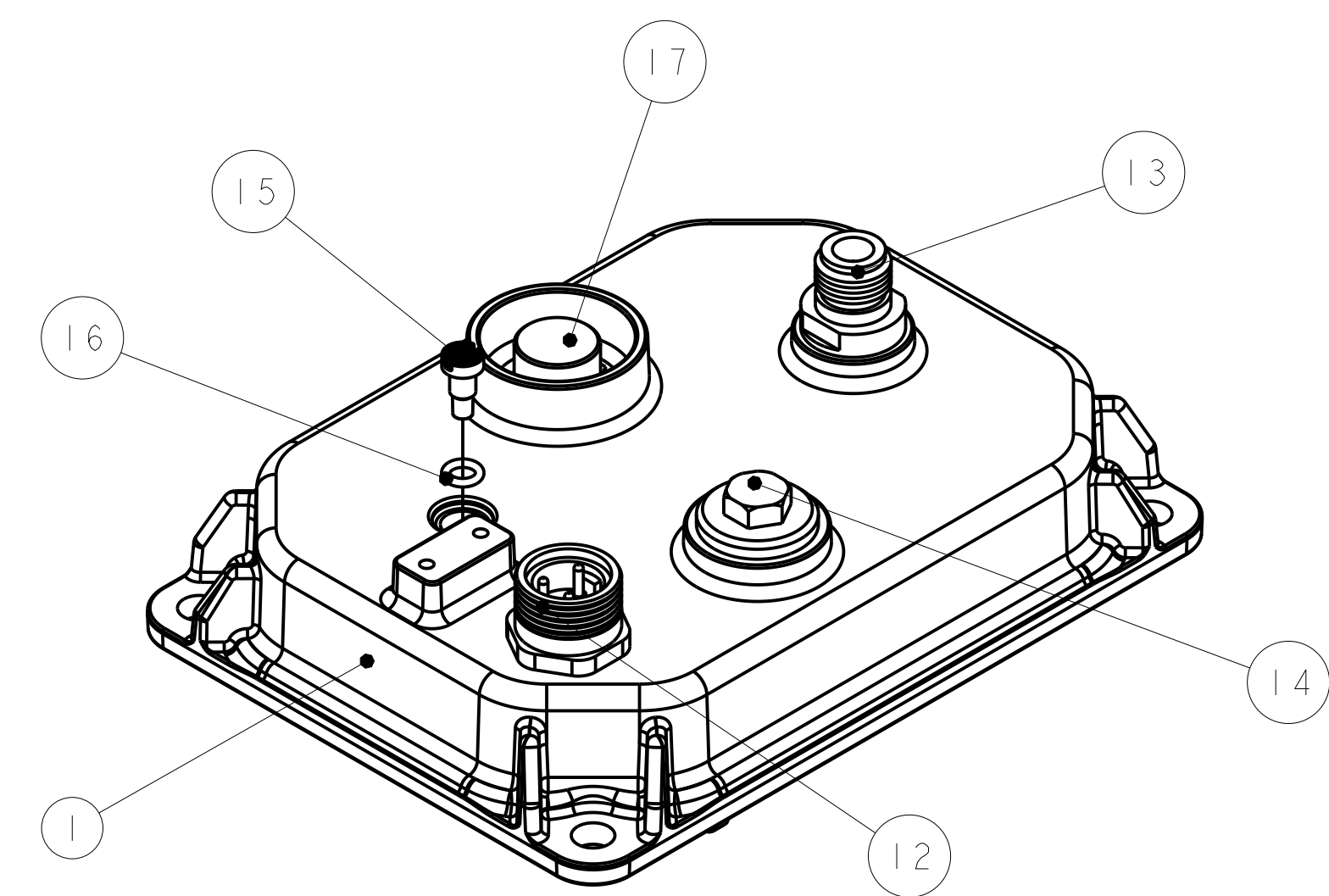


REV	DESCRIPTION	ECO	APPROVE	
			MECH	MFG
01	INITIAL RELEASE		CK	JC
03	CHANGED LIGHTPIPE TORQUE, ADDED POWER CONN ORIENTATION VIEW		CK	JC
04	ADDED ITEM 24, 25, AND 26		CK	JC
05	ADDED ITEM 28		CK	JC
06	ADDED ITEM 29		CK	JC



STEP 2

STEP 3

NOTES: (UNLESS OTHERWISE SPECIFIED)

- THIS IS A COMPUTER GENERATED DOCUMENT. ALL CHANGES MUST BE MADE IN THE MASTER DATABASE ONLY.
- SLIDE O-RING, ITEM 16, INTO THE LIGHTPIPE, ITEM 15. INSTALL THE LIGPIPE ASSY, POWER CONNECTOR WITH NUT (SEE NEXT PAGE FOR ORIENTATION), ITEM 12, PG13 PLUG, ITEM 14, ANTENNA CONN, ITEM 13 TO THE BOTTOM COVER, ITEM 1.
- INSTALL MCX-MCX CABLE, ITEM 21, TO THE ANTENNA CONN, ITEM 13. APPLY TIMS, ITEM 10 (7X), TO THE BOTTOM COVER, ITEM 1. PLS REFER TO PAGE TO FOR TIM LOCATIONS.
- INSTALL THE OTHER END OF THE MCX-MCX CABLE, ITEM 21, TO THE MOTHERBOARD, ITEM 3. SLIDE THE MOTHERBOARD, ITEM 3, INTO THE INTERFACE CARD, ITEM 4, AS SHOWN. PLACE THE WHOLE ASSEMBLY INTO THE BOTTOM COVER. TIGHTEN WITH SCREWS, ITEMS 8 (5X). PLACE THE TIM, ITEM 10, RIGHT AT THE CENTER OF COPPER SQUARE ON THE MOTHERBOARD, ITEM 3. PLACE TIMS, ITEM 22, ON TWO ROWS OF RESISTORS ON THE INTERFACE CARD, ITEM 4, AS SHOWN.
- ROUTE THE POWER CABLES, ITEM 12, INTO THE SLOT OF MIDPLATE, ITEM 7, ENSURE ALL CABLES ARE ABOVE THE MID PLATE. INSTALL THE MID PLATE, ITEM 7, TO THE BOTTOM COVER ASSEMBLY, ALIGN ONE SCREW, ITEM 8, TO THE SMALLEST MIDPLATE MOUNTING HOLE, AS SHOWN. TIGHTEN WITH THE REST OF THE SCREWS, ITEM 8 (5X). TIGHTEN 2 SCREWS, ITEM 8, TO THE INTERFACE CARD. APPLY INSULATOR, ITEM 28.
- PLACE 3 TIMS, ITEM 9, TO THE SIDE OF THE MID PLATE. INSTALL POWER SUPPLY UNIT, ITEM 5, TO THE MID PLATE WITH 4 SCREWS, ITEM 8. INSTALL POWER ADAPTER, ITEM 22, TO THE POWER SUPPLY UNIT (PSU), ITEM 5. INSTALL THE CRIMP CONNECTORS FROM THE POWER CABLE, ITEM 12, TO THE LEADS, POWER ADAPTER, ITEM 22. PLS REFER TO PAGE TWO FOR PIN OUT DETAILS. GENTLY PUSH ALL THE EXCESSIVE LENGTH CABLES INTO THE MIDPLATE SLOT. INSTALL THE PSU OUTPUT CABLE, ITEM 5, TO THE INTERFACE CARD, ITEM 4. PLS REFER TO PAGE 2 FOR DETAILS. NEXT SECURE THE CABLE WITH A TIE WRAP, ITEM 23, TO THE MIDPLATE. PLACE 3 TIMS, ITEM 9, TO THE PSU HEATSINK, AS SHOWN.
- GENTLY PRESS THE GASKET, ITEM 11, INTO THE GROVE OF THE BOTTOM COVER, ITEM 1. FINALLY, PUT BOTH OF THE TOP AND BOTTOM COVER TOGETHER. TIGHTEN WITH 4 SETS OF BOLTS, ITEM 18, SPRING WASHERS, ITEM 19 AND FLAT WASHER, ITEM 20. FINALLY, APPLY THE LABELS, ITEM 25, 26, 27 AND 29 AS SHOWN IN PAGE TWO.
- ASSEMBLY AND PARTS SHALL CONFORM TO MECH COSMETIC ACCEPTANCE SPEC 95-0669-XX, AND MECH COSMETIC SPEC, 95-2733-XX.
- REFER TO TABLE BELOW FOR TORQUE REQUIREMENT

ITEM #	DESCRIPTION	TORQUES [INLBF]
8	M3 SCREW	5-7
18	M8 BOLT	72-84
13	ANTENNA CONN	72-84
14	PG-13 PLUG	72-84
15	LIGHTPIPE	3.0-3.5
12	POWER CONN NUT	72-84
17	GORE VENT	5-7

UNLESS OTHERWISE SPECIFIED DIMENSIONS ARE IN INCHES:
TOLERANCES:
.XX±.01
.XXX±.005
ANGLES: ±1°

THIS DRAWING CONTAINS INFORMATION WHICH IS THE PROPRIETARY PROPERTY OF CISCO SYSTEMS. THIS DRAWING IS CONFIDENTIAL AND ITS CONTENTS MAY NOT BE DISCLOSED WITHOUT PRIOR WRITTEN CONSENT OF CISCO SYSTEMS.

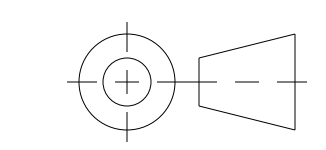


APPROVAL		DATE
DES C. KHO		12/16/13
ENG C. KHO		12/16/13
MFG J. CHEW		12/16/13

REFDWG, FNLSY, BASE, BR-RE

MATERIAL:

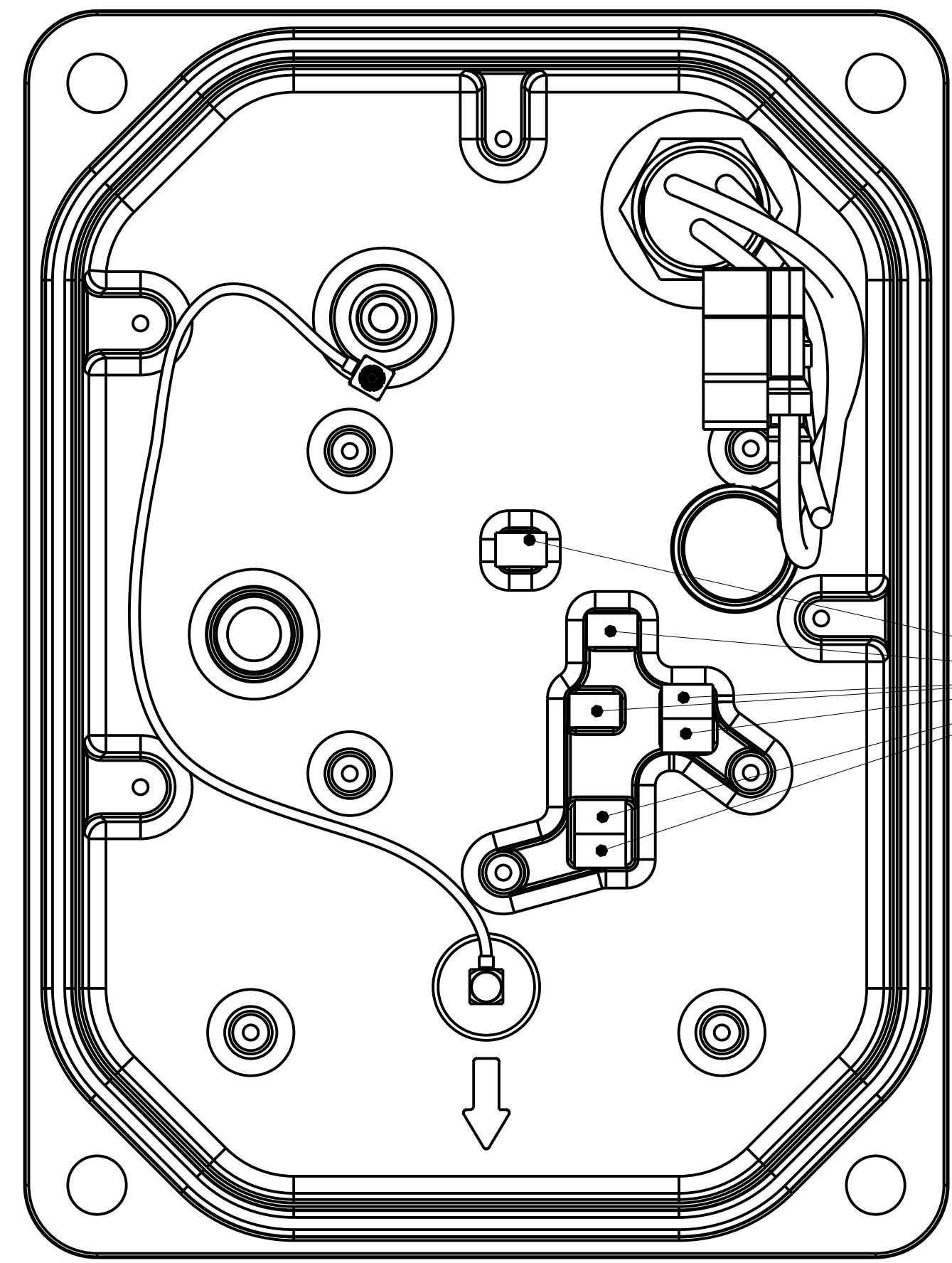
THIRD ANGLE PROJECTION



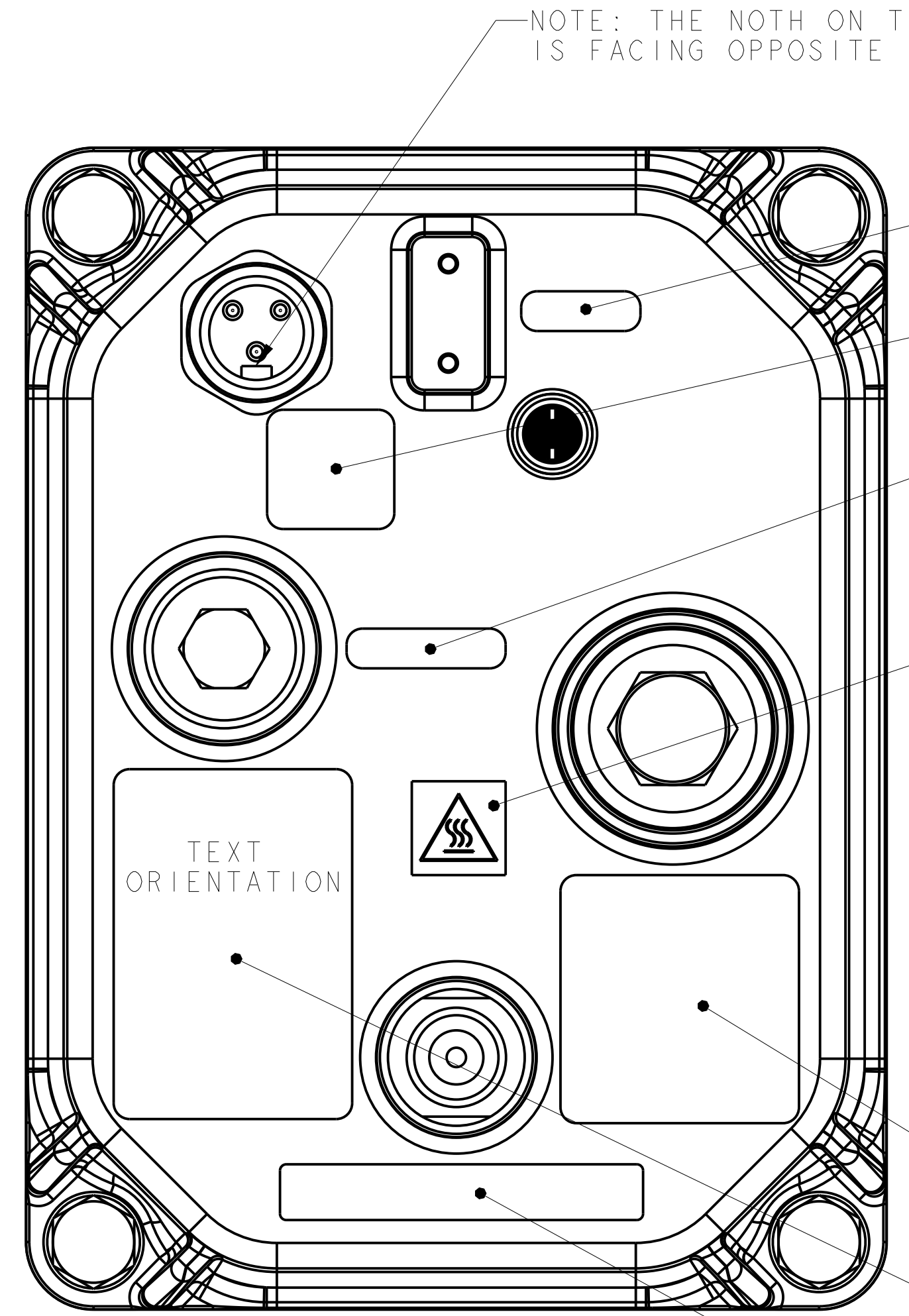
FINISH:

SIZE	DWG NO.	REV
D	62-26778-02	06

--- REVISION ---			
REV	DESCRIPTION	ECO	APPROVE MECH MFG
SEE SHEET 1			

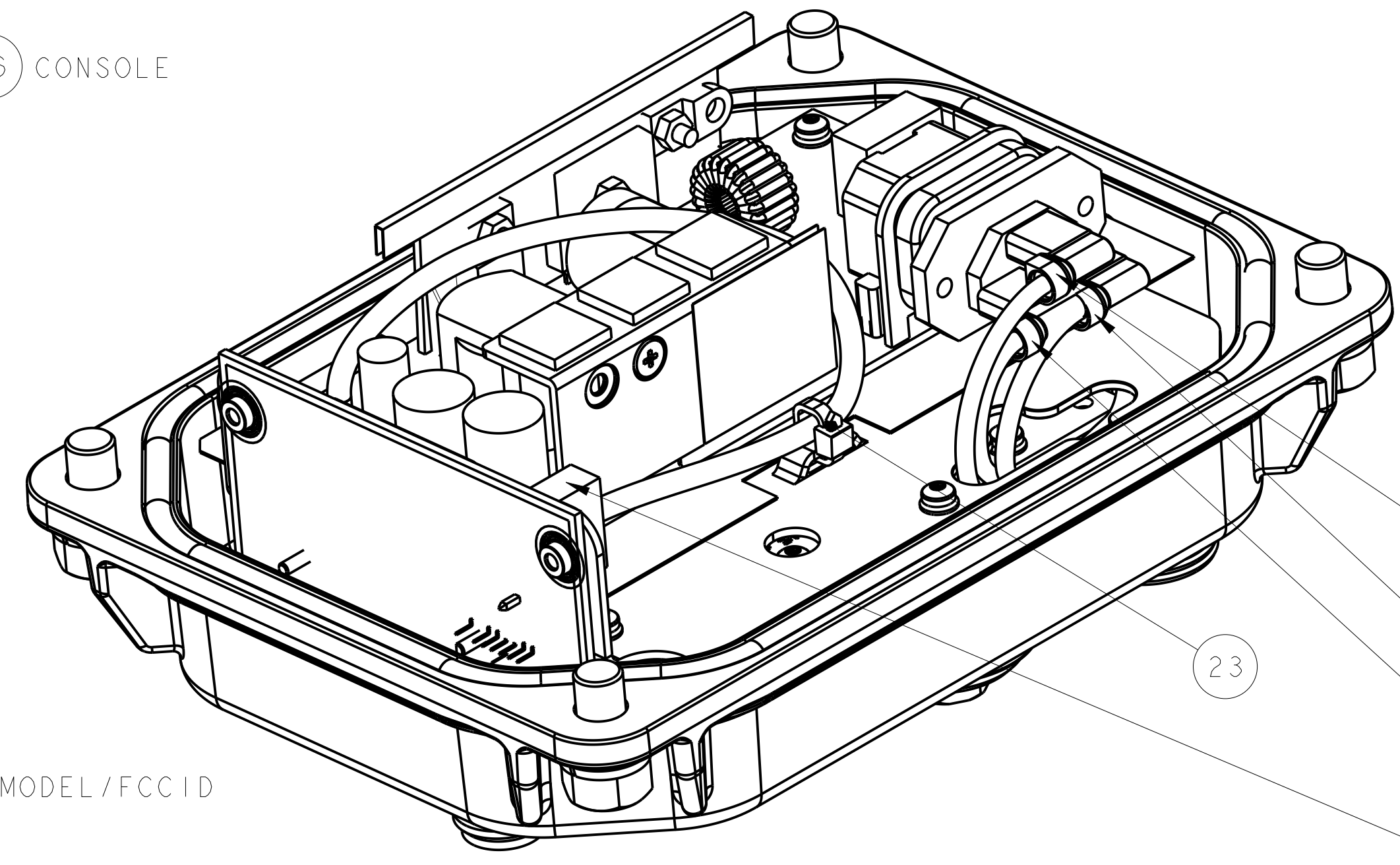


TIM LOCATIONS



ORIENTATION OF POWER INPUT CONN
&
LABEL LOCATIONS

NOTE: THE NOTH ON THE POWER CONNECTOR IS FACING OPPOSITE EDGE OF THE CHASSIS



PSU PIN OUT TO POWER CABLE SCHEMATIC

- GROUND WIRE (YELLOW/GREEN)
- NEUTRAL WIRE (BLUE)
- LIVE WIRE (BROWN)
- PSU OUTPUT CABLE TO INTERFACE BOARD.

SIZE D	DWG NO. 62-26778-02	REV 06
SCALE 1/1	DO NOT SCALE DRAWING	SHT 2 OF 2
CAD TYPE: PROE		