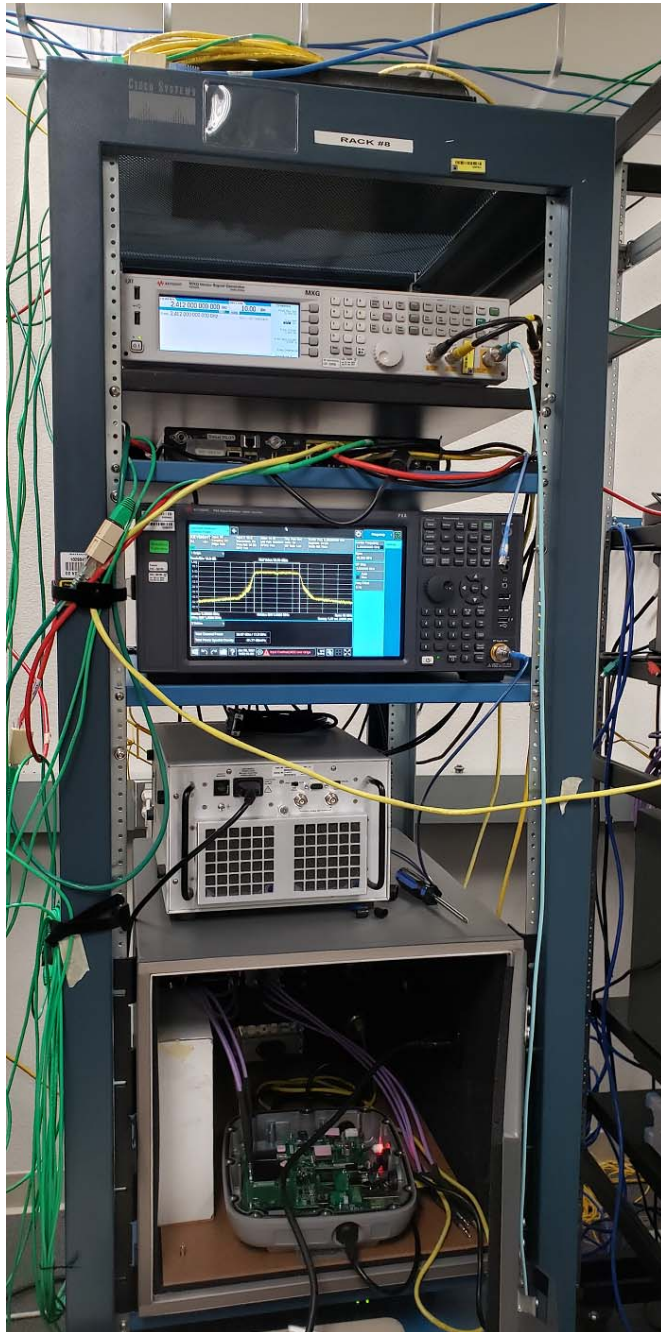


## Supplementary Exhibit - EUT Photos

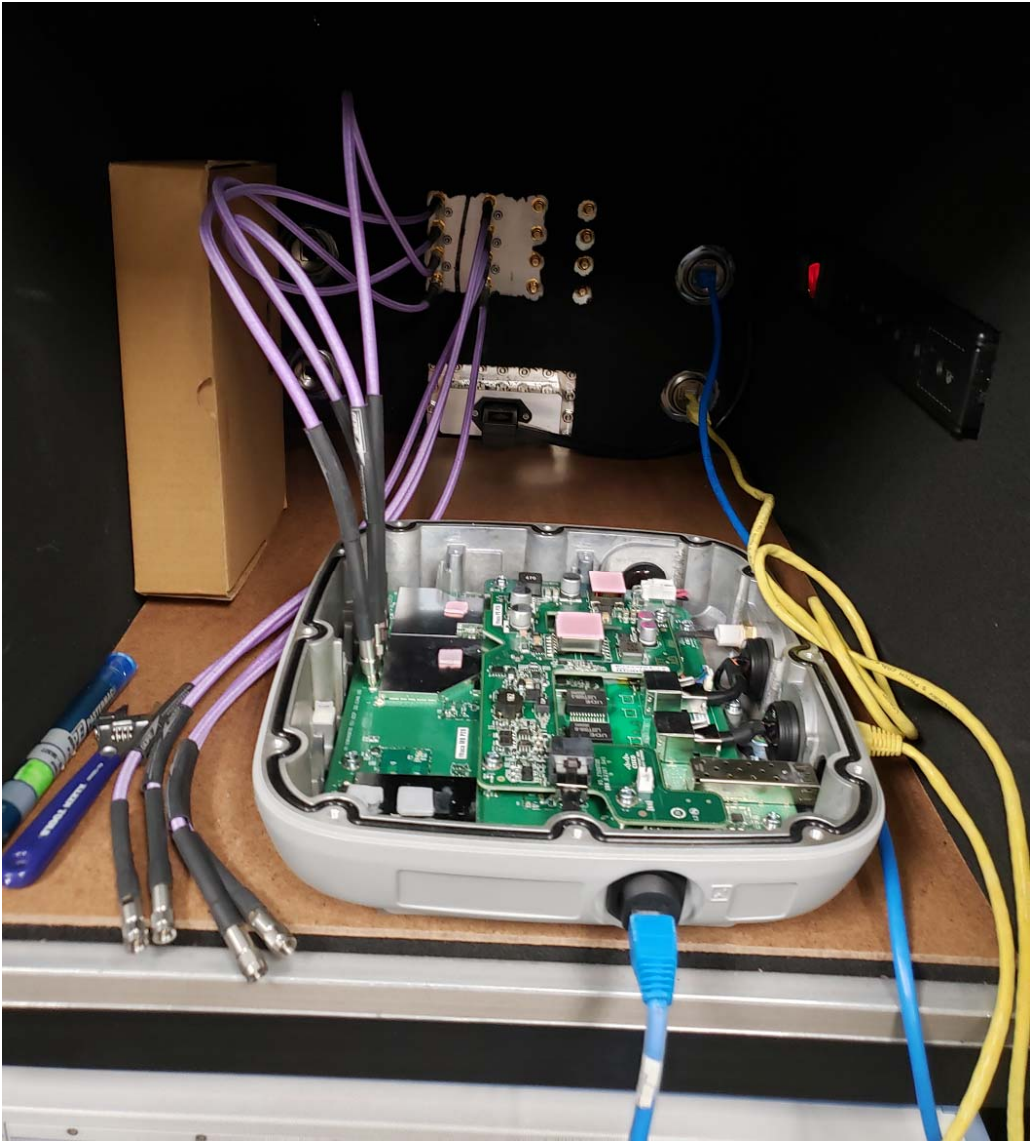
EDCS# 21541319

C9124AXD FCC/IC

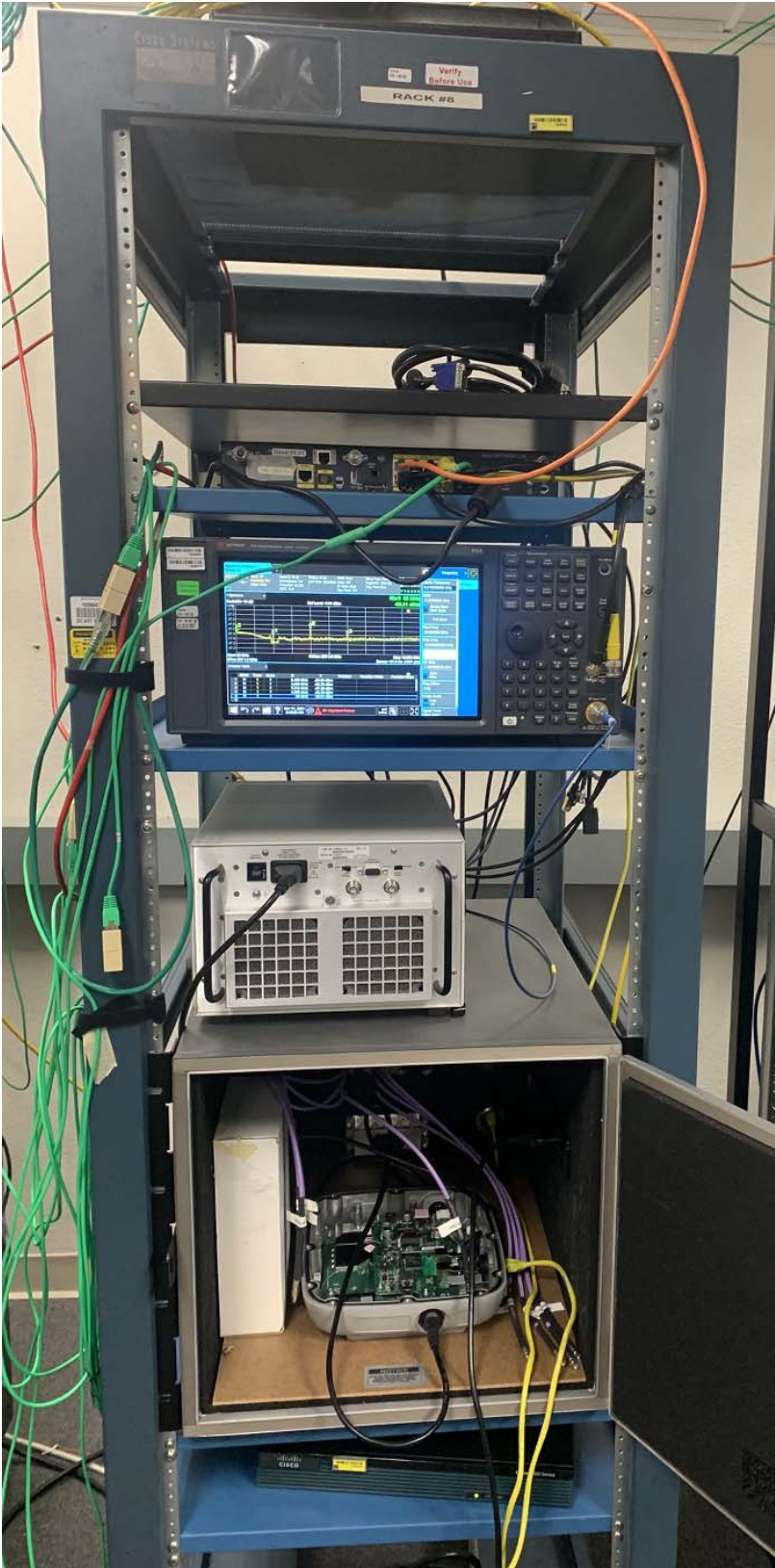
Title: Radio Conducted Test Setup – Rack 8



**Title:** Radio Conducted Test Setup – Rack 8



**Title:** Radio Conducted Test Setup – Rack 8 - BLE



**Title:** Radio Conducted Test Setup – Rack 8 - BLE

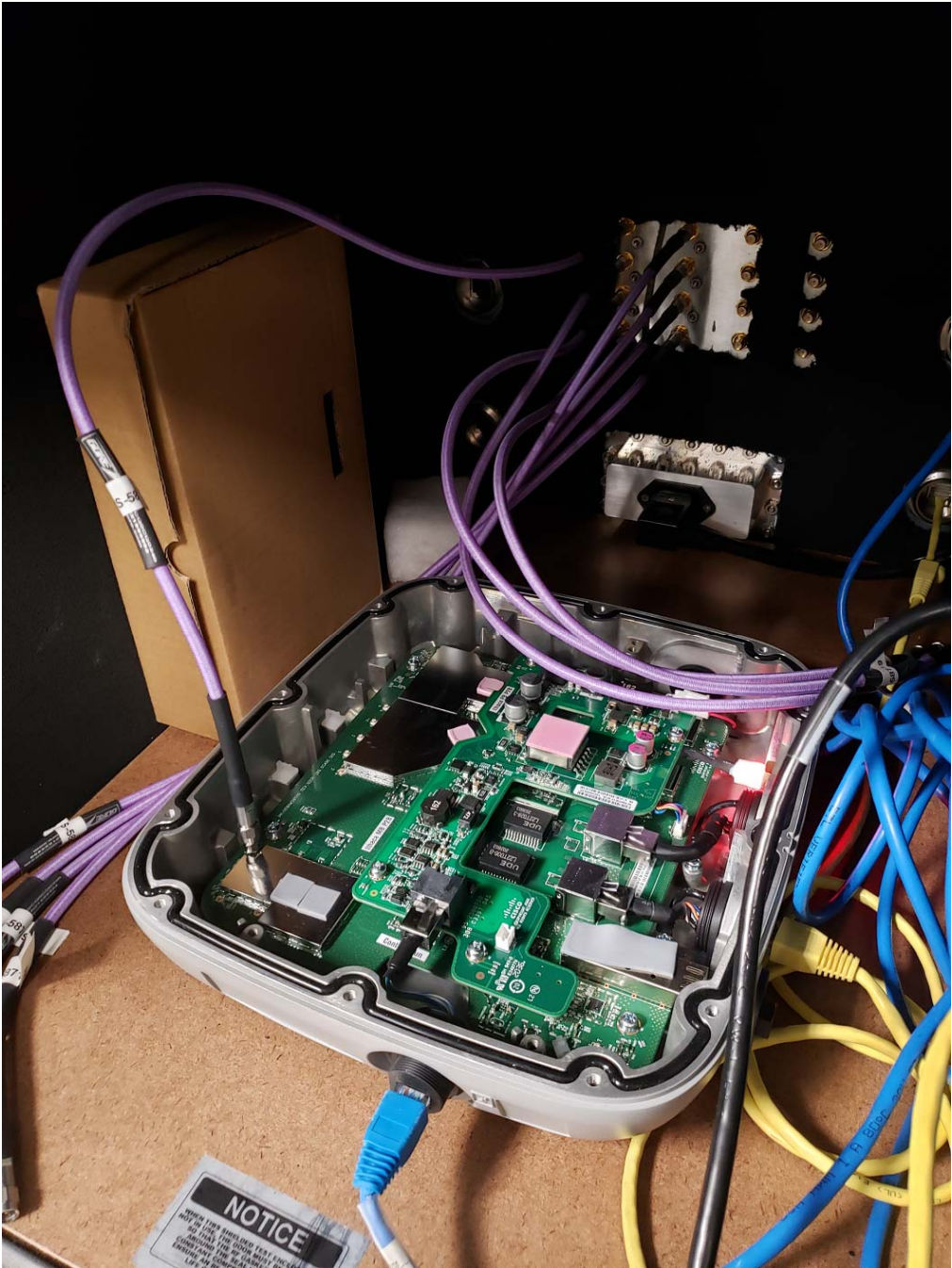


**NOTICE**  
WHEN THIS SHIELDED TEST ENCLOSURE IS NOT IN USE, THE COVER MUST BE LEFT OPEN SO THAT THE RF SHIELD MATERIAL AROUND THE SEALS IS NOT UNDER CONSTANT COMPRESSION. THIS WILL ENSURE AN AIRTIGHT SEAL OVER THE LIFE OF YOUR ENCLOSURE.

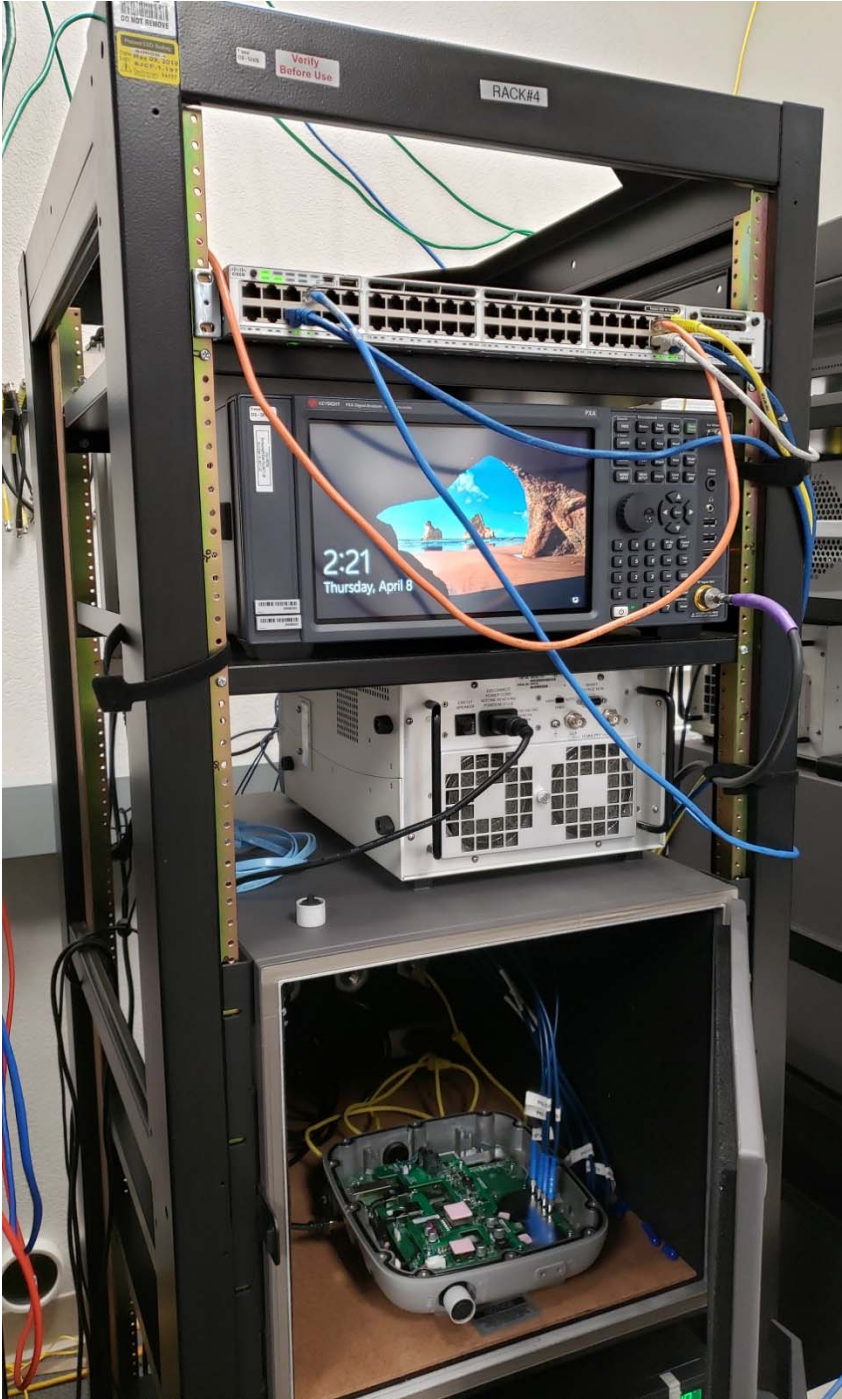
Title: Radio Conducted Test Setup – Rack 9



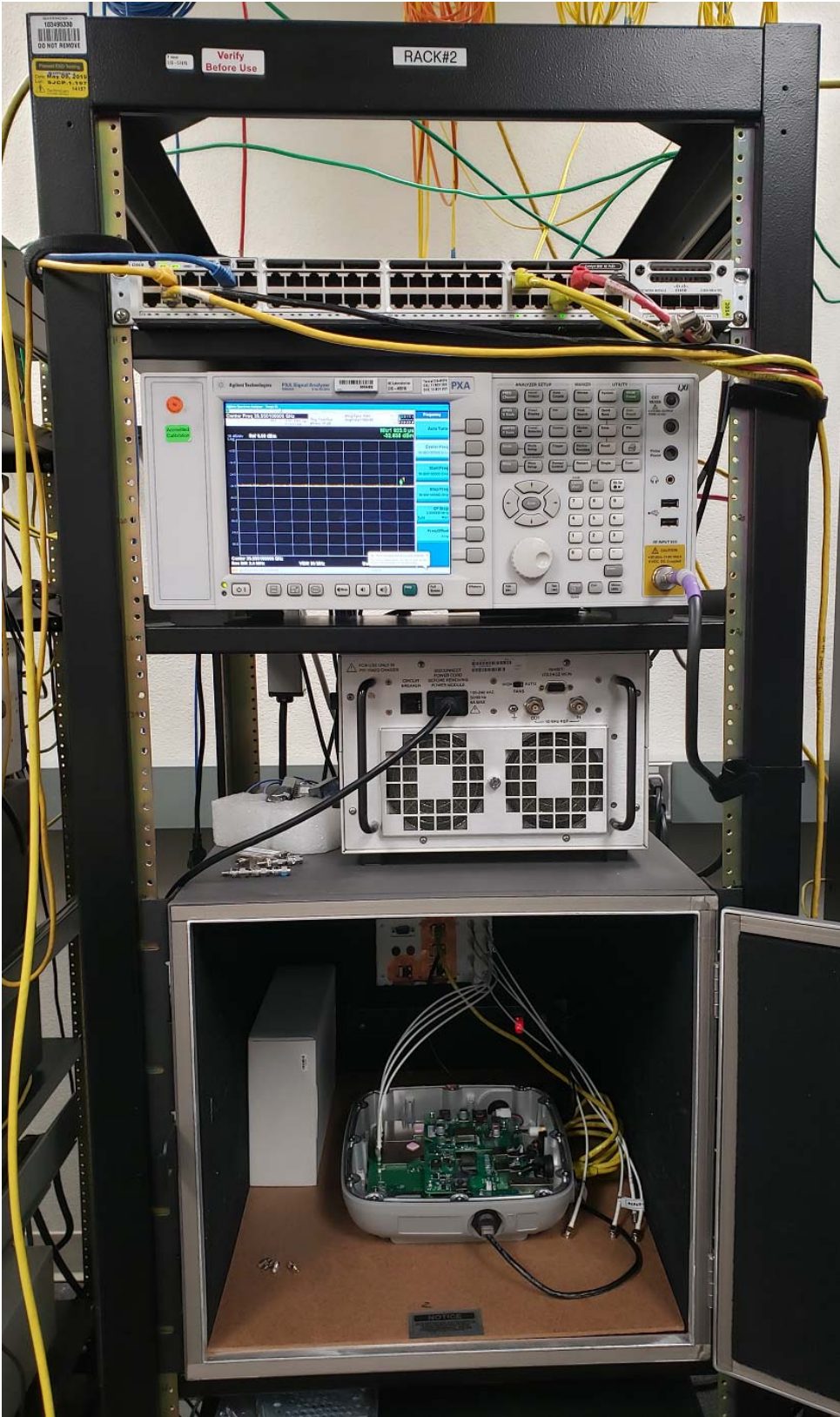
**Title:** Radio Conducted Test Setup – Rack 9



**Title:** Radio Conducted Test Setup – Rack 4



Title: Radio Conducted Test Setup – Rack 2



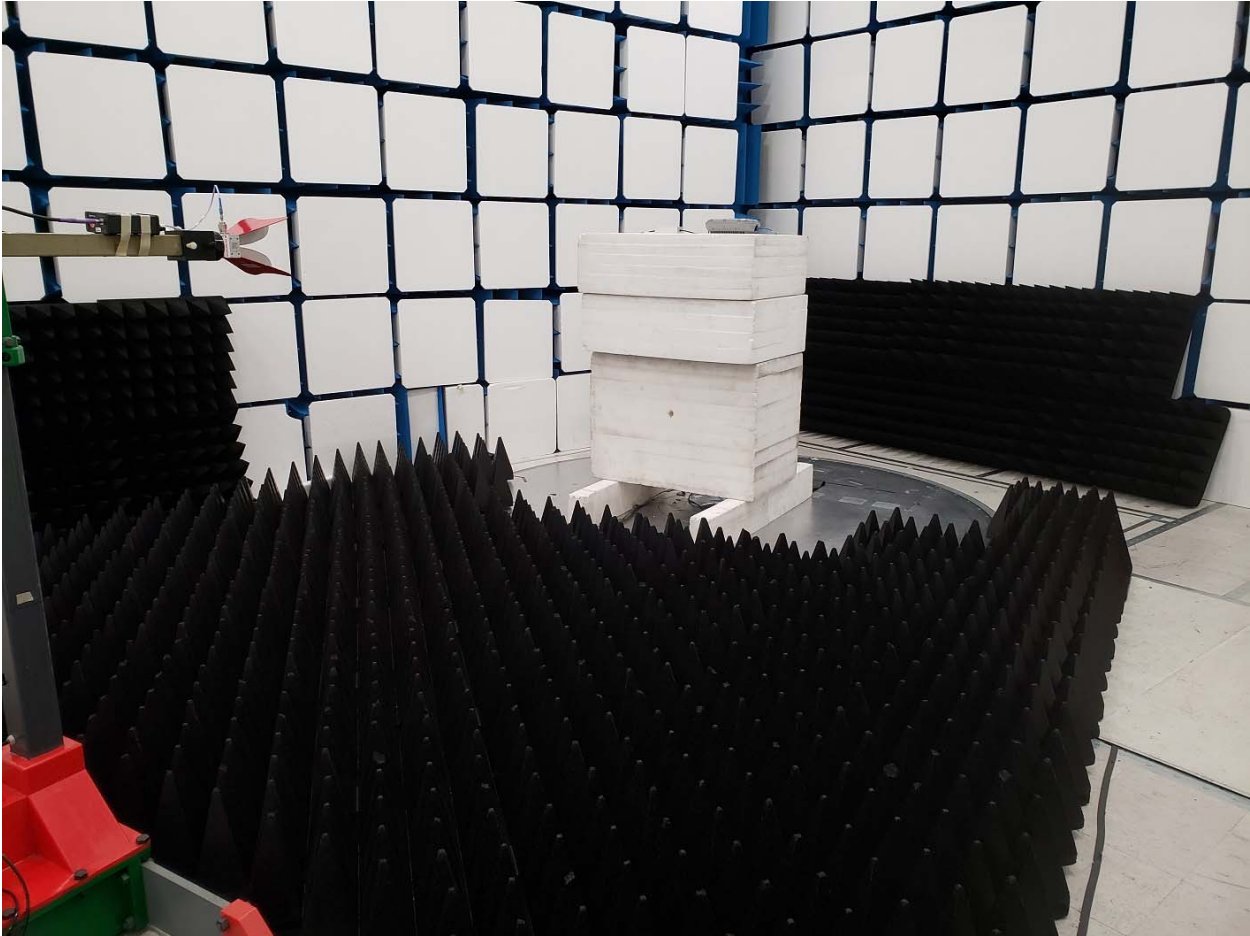


## Radiated Spurious Emissions

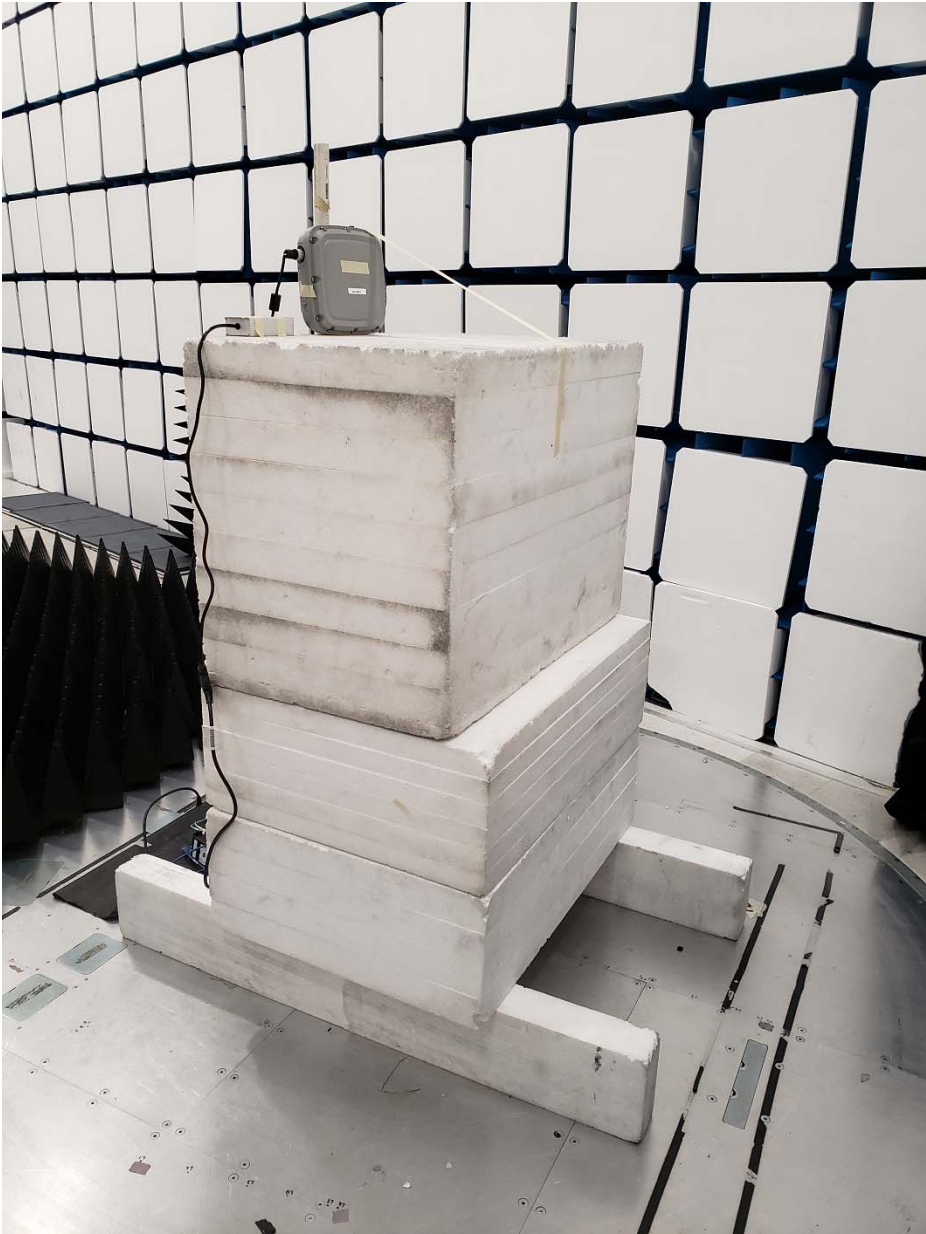
**Title:** Radiated Spurious Emissions Test Setup – 30MHz-1GHz



**Title:** Radiated Spurious Emissions Test Setup – 1GHz-18GHz



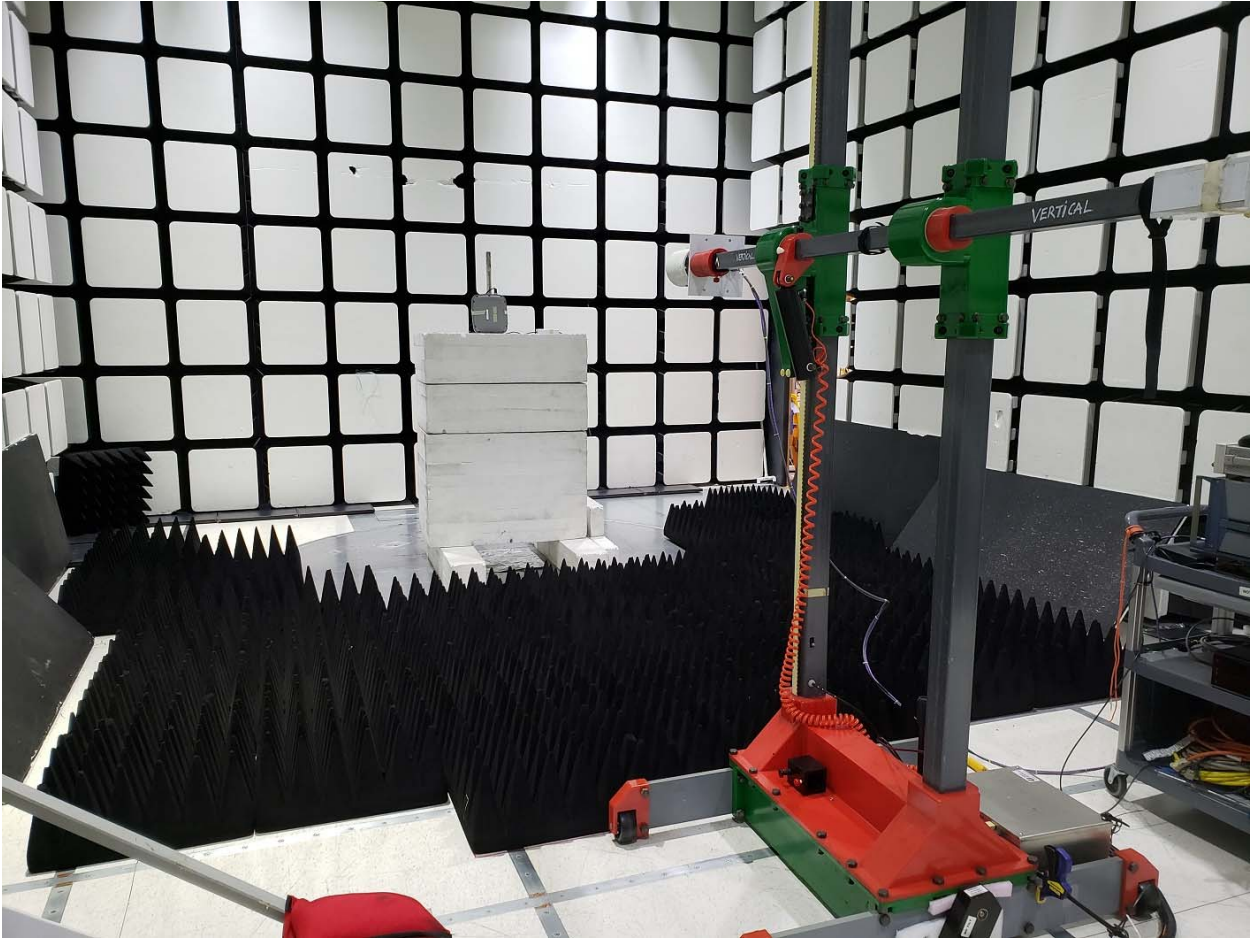
**Title:** Radiated Spurious Emissions Test Setup – 1GHz-18GHz



**Title:** Radiated Spurious Emissions Test Setup – 1GHz-18GHz



**Title:** Radiated Spurious Emissions Test Setup – 18GHz-40GHz



**Title:** AC Conducted Emissions Test Setup

