

**PHOTOGRAPHS OF THE INTERIOR OF A
MODEL VU121.**

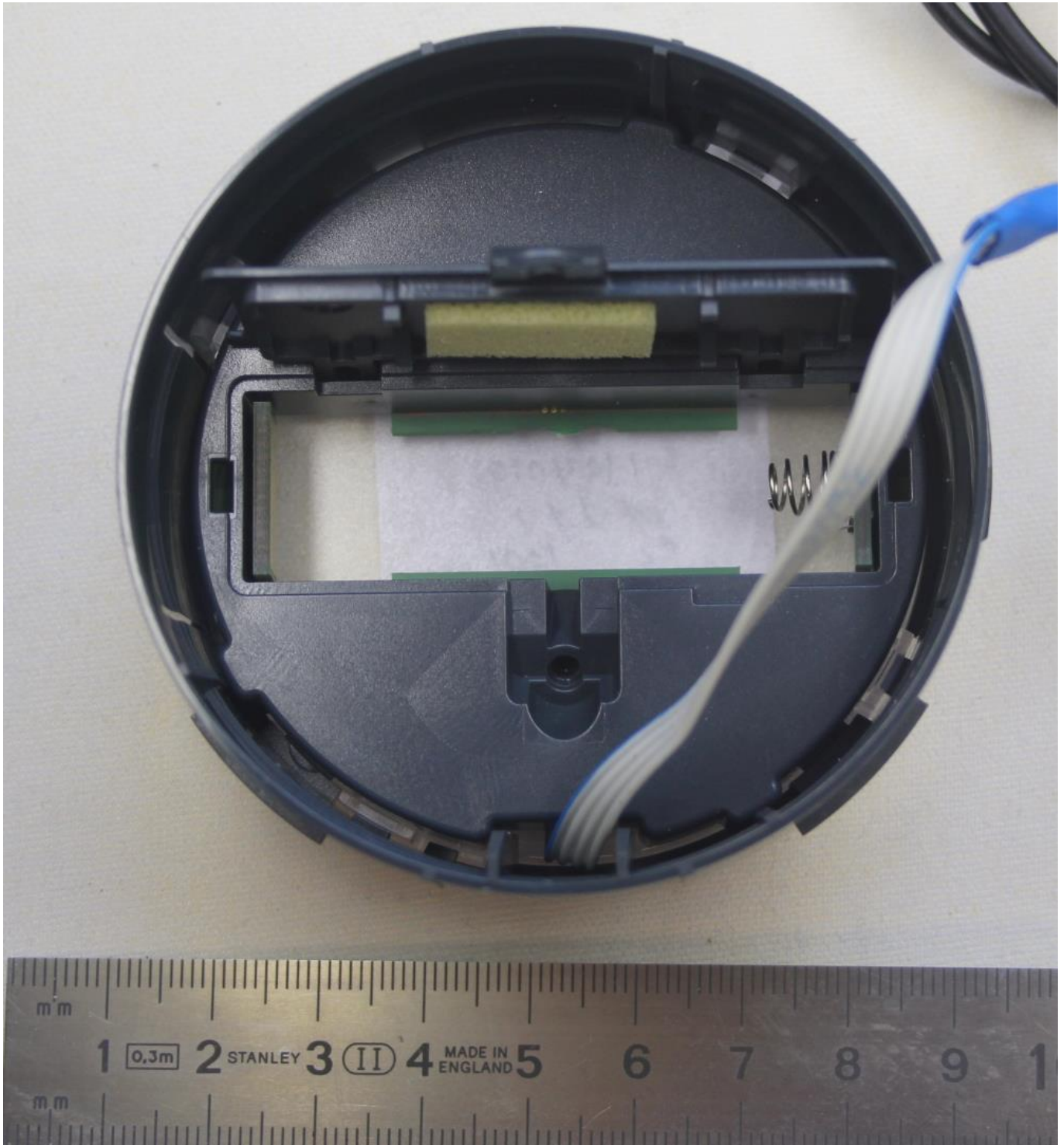
TÜV Rheinland Nederland B.V.
Eiberkamp 10
9351VT Leek
The Netherlands

Telephone: +31 888887888
Internet: www.tuv.com/nl
E-mail: products@nl.tuv.com

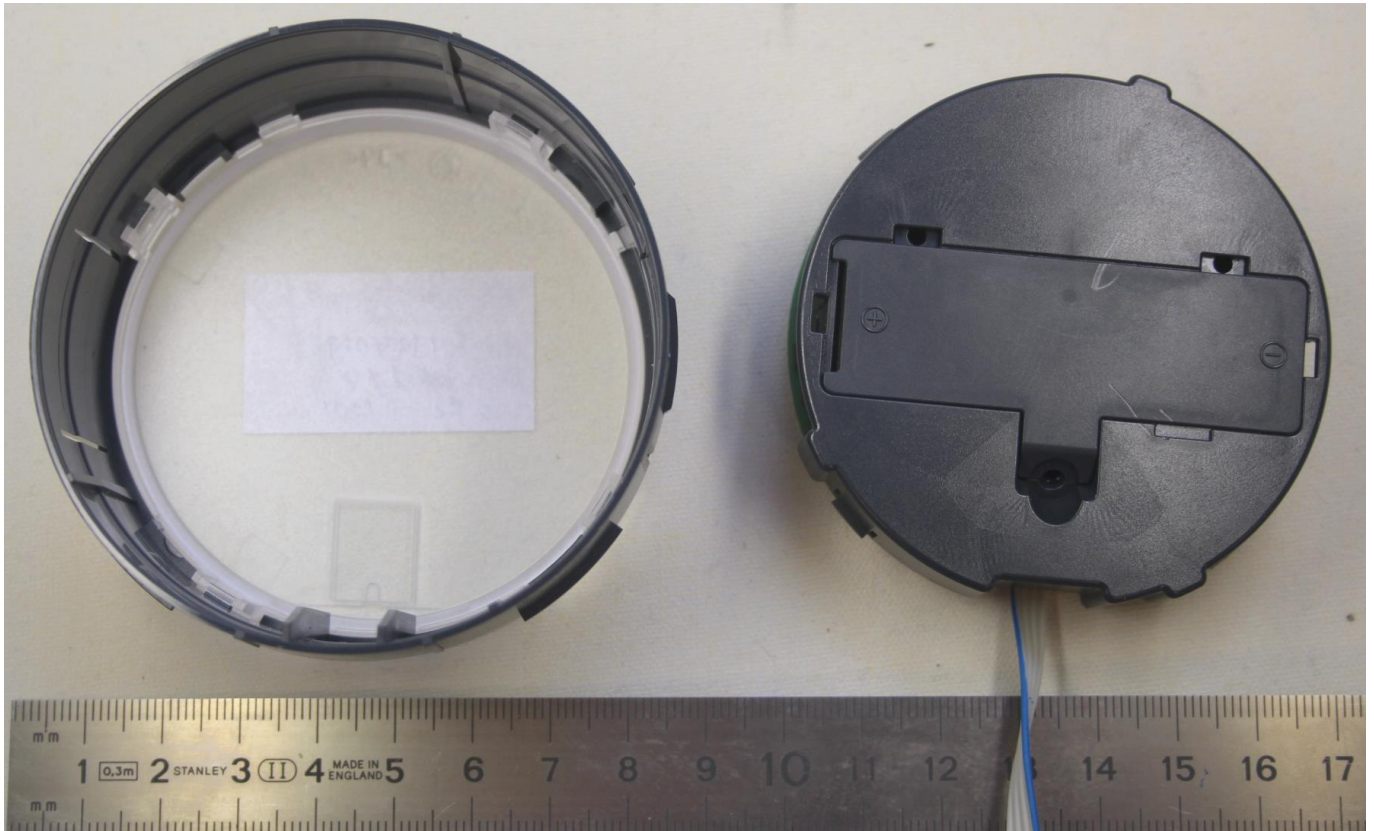
Table of contents

1.1	INTERNAL VIEW, BATTERY COVER OPENED.....	3
	3
1.2	INTERNAL VIEW, COVER REMOVED FROM PCB HOLDER.....	4
1.3	INNER ASSEMBLY, PCB REMOVED FROM HOLDER,	5
1.4	INNER ASSEMBLY, PCB VIEW.....	6
1.4.1	<i>PCB view, Front side.....</i>	6
1.4.2	<i>PCB view, Components side, zoom in to the transmitter part.....</i>	7
1.4.3	<i>PCB view - Back side.....</i>	8

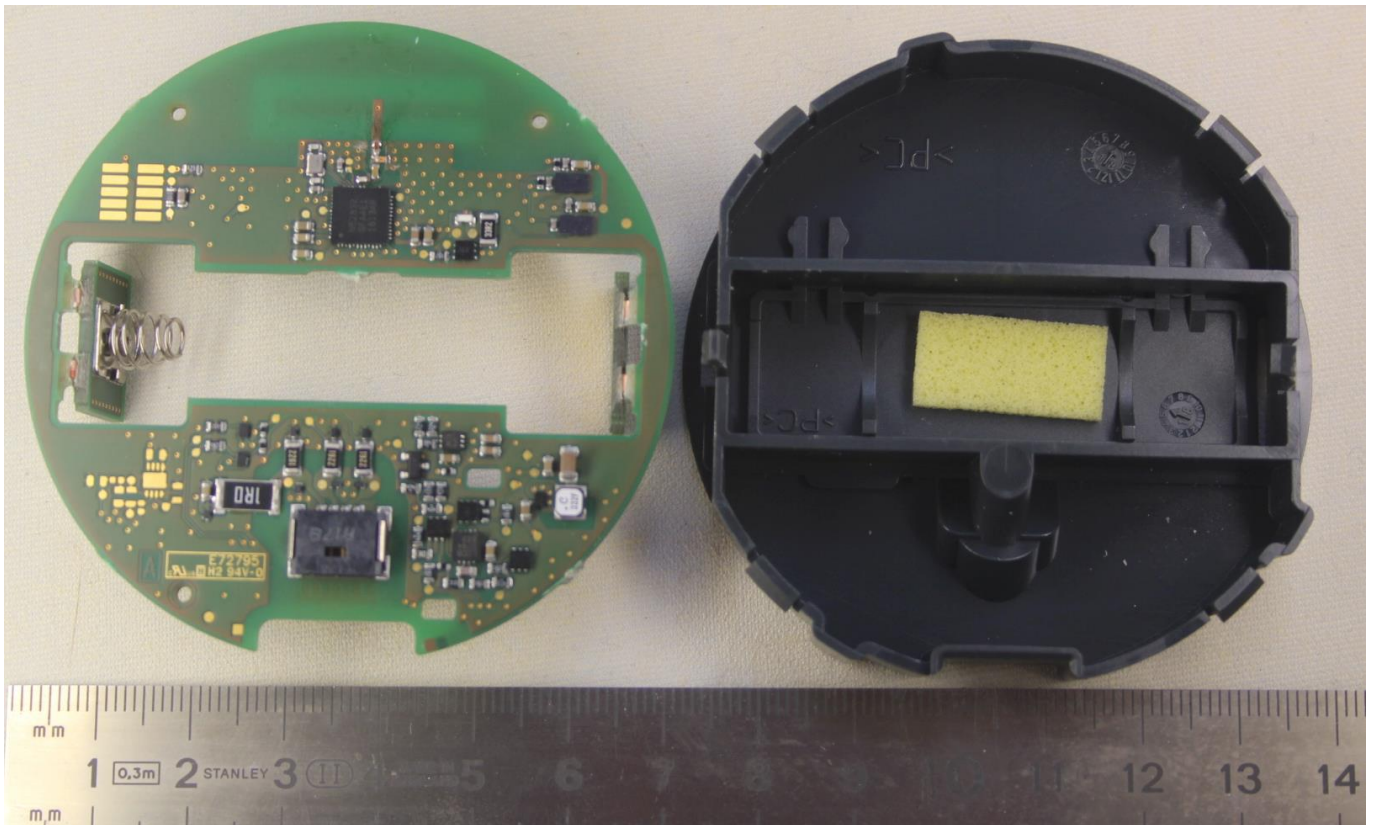
1.1 Internal view, battery cover opened



1.2 Internal view, cover removed from pcb holder

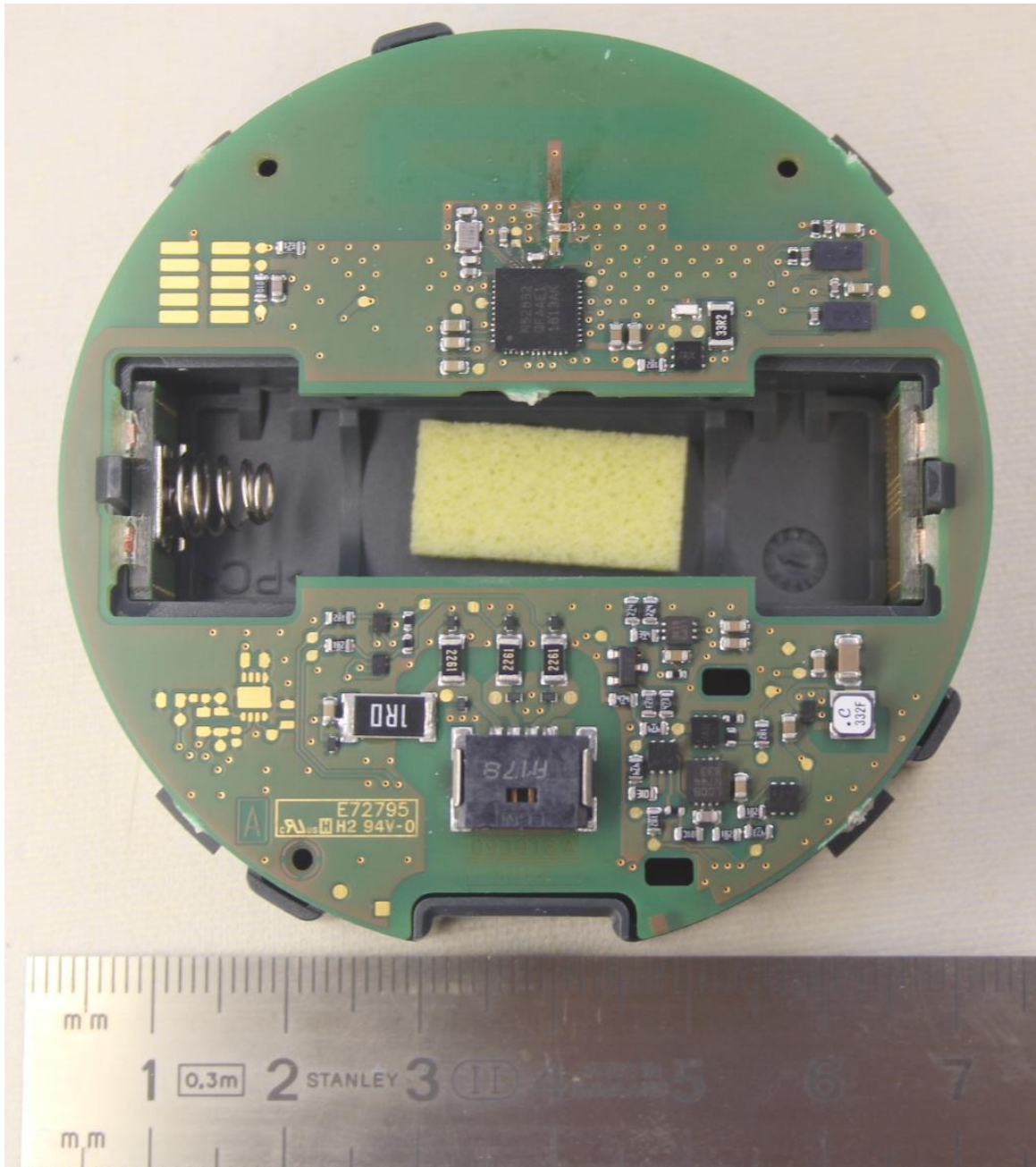


1.3 Inner assembly, PCB removed from holder,

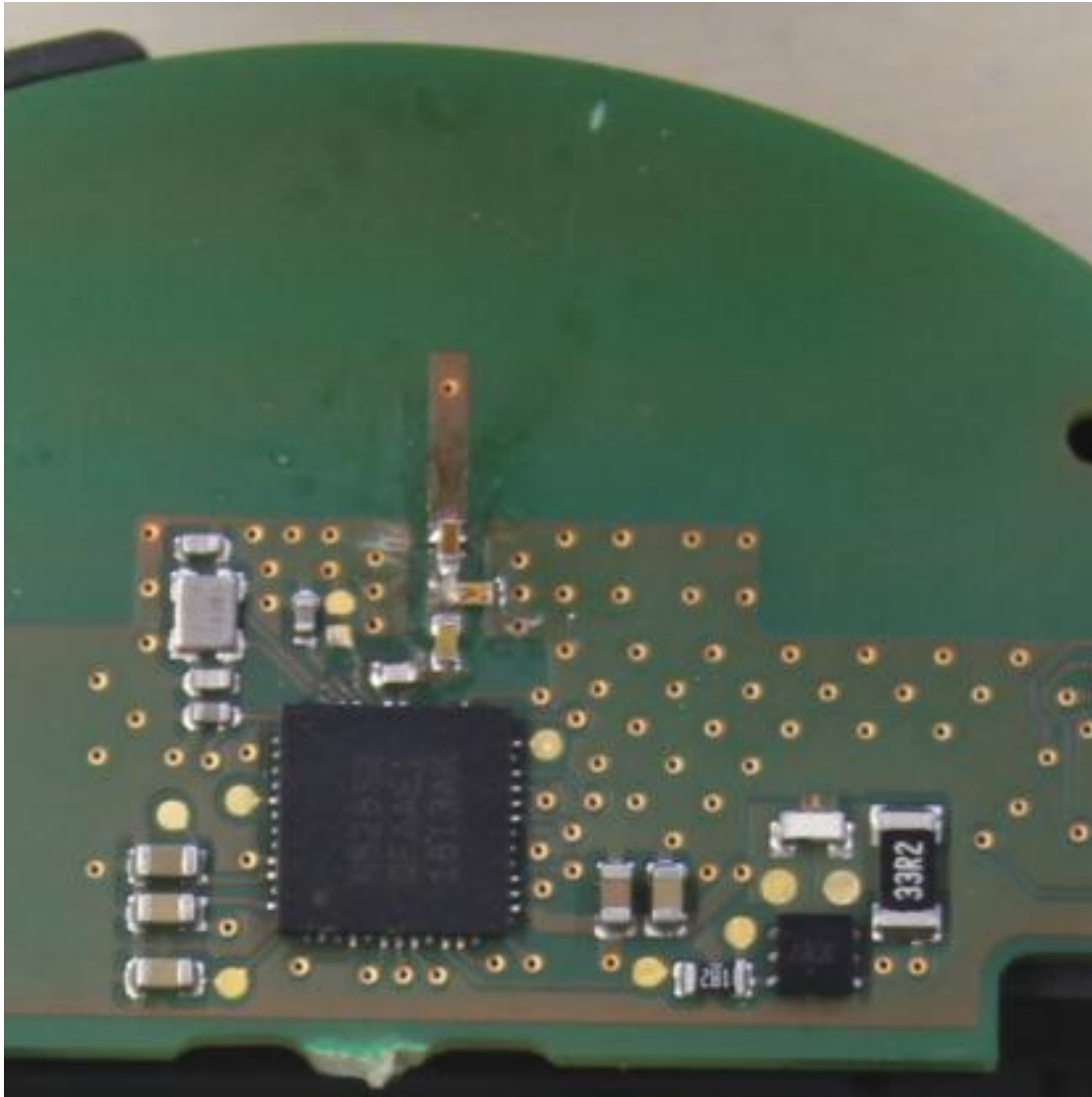


1.4 Inner assembly, PCB view

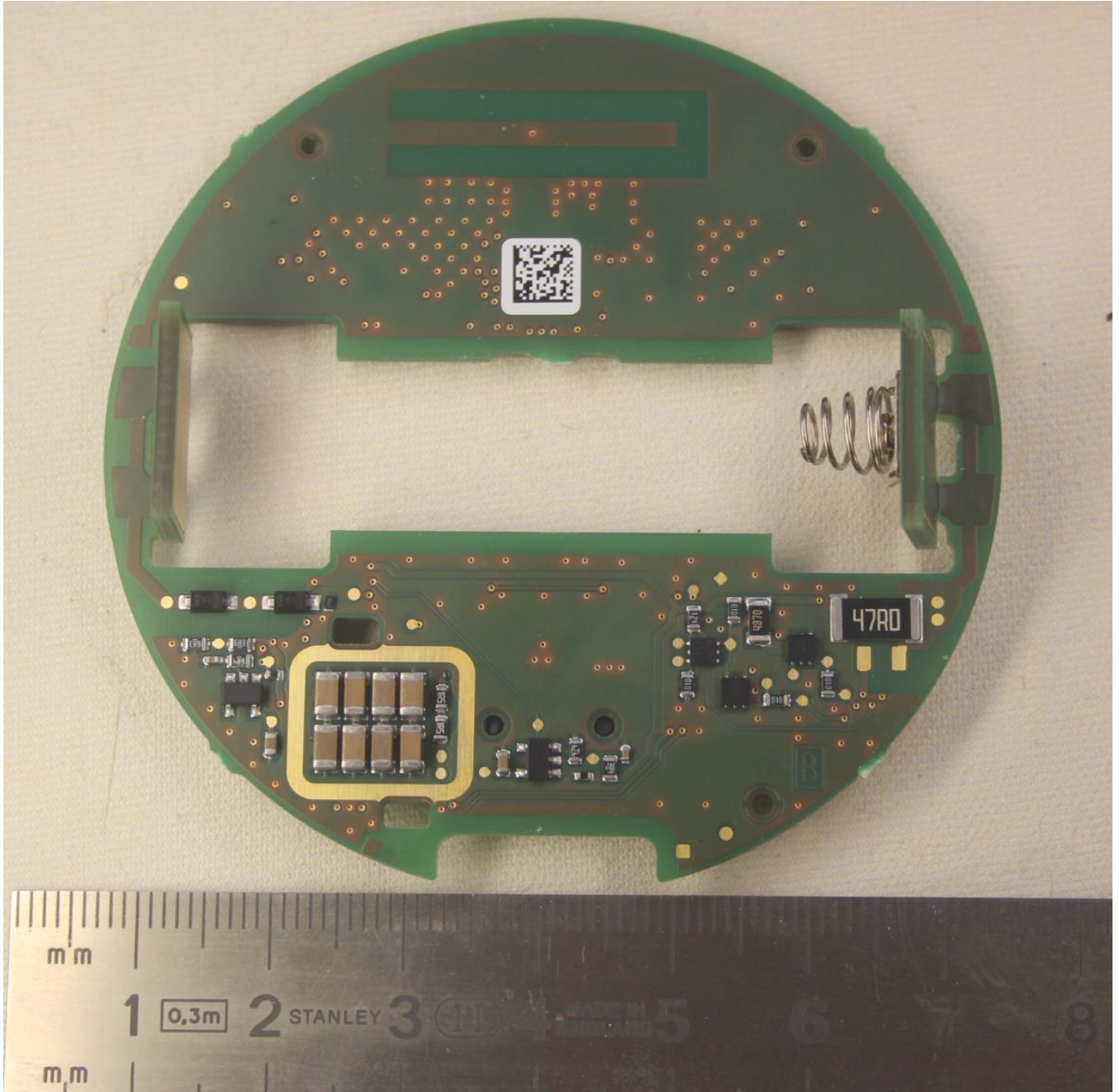
1.4.1 PCB view, Front side



1.4.2 PCB view, Components side, zoom in to the transmitter part



1.4.3 PCB view - Back side



END OF DOCUMENT