

1. Photographs of Conducted Emissions Test Configuration

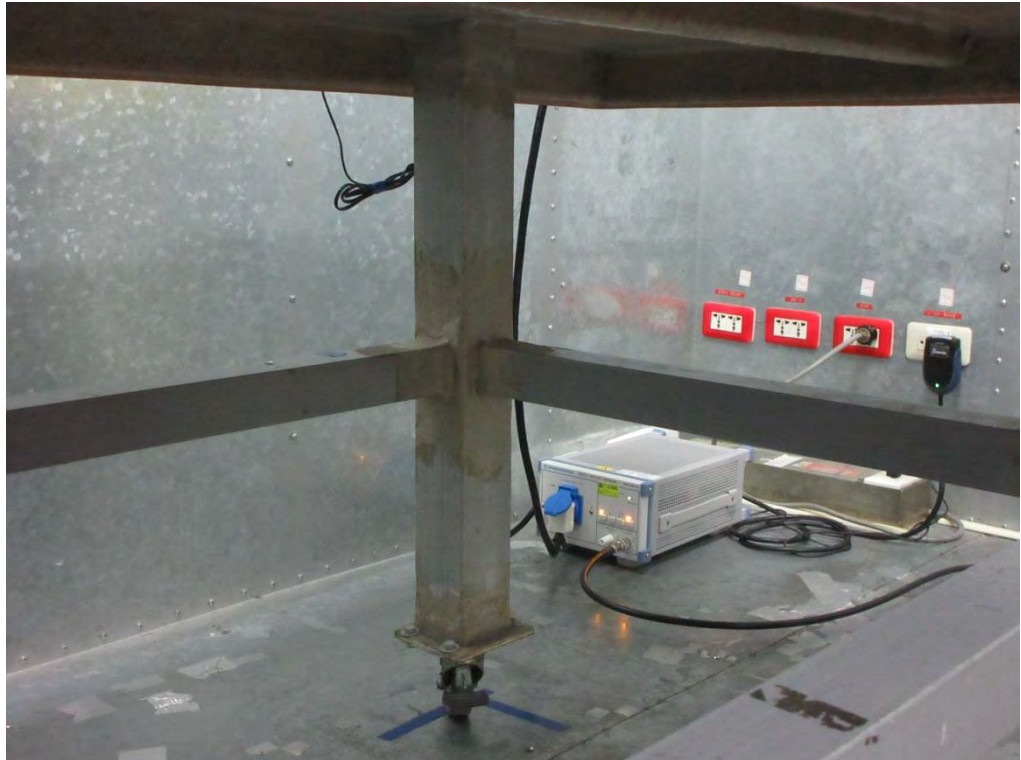
Front view



Rear view



Side view

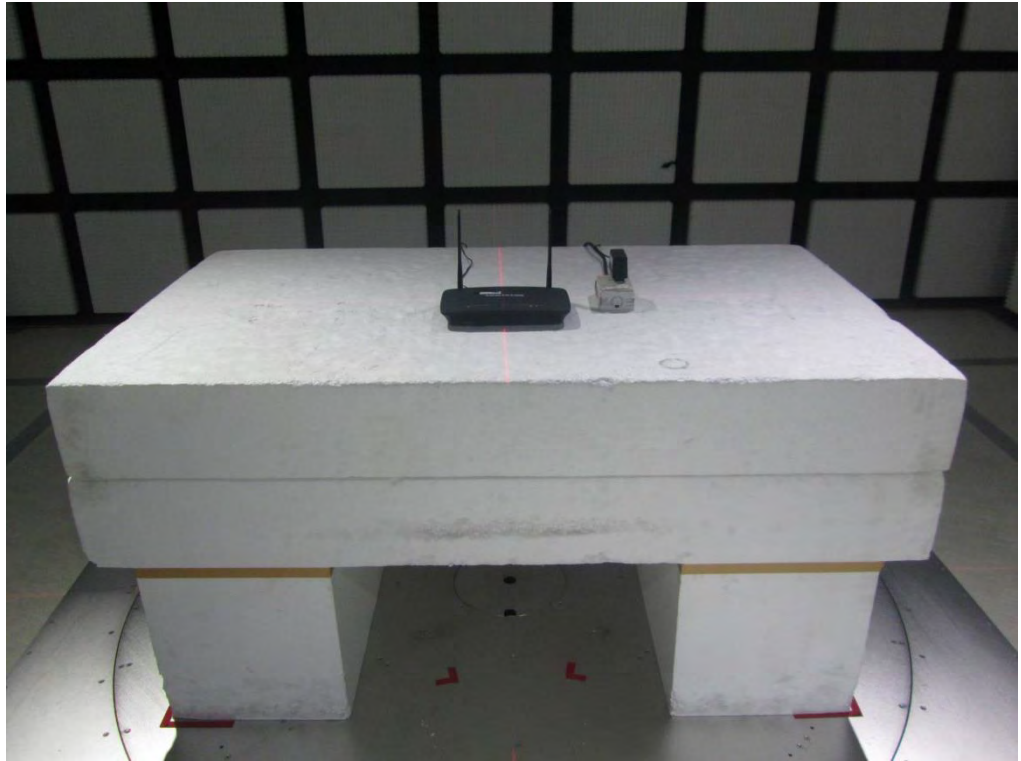


2. Photographs of Radiated Emissions Test Configuration

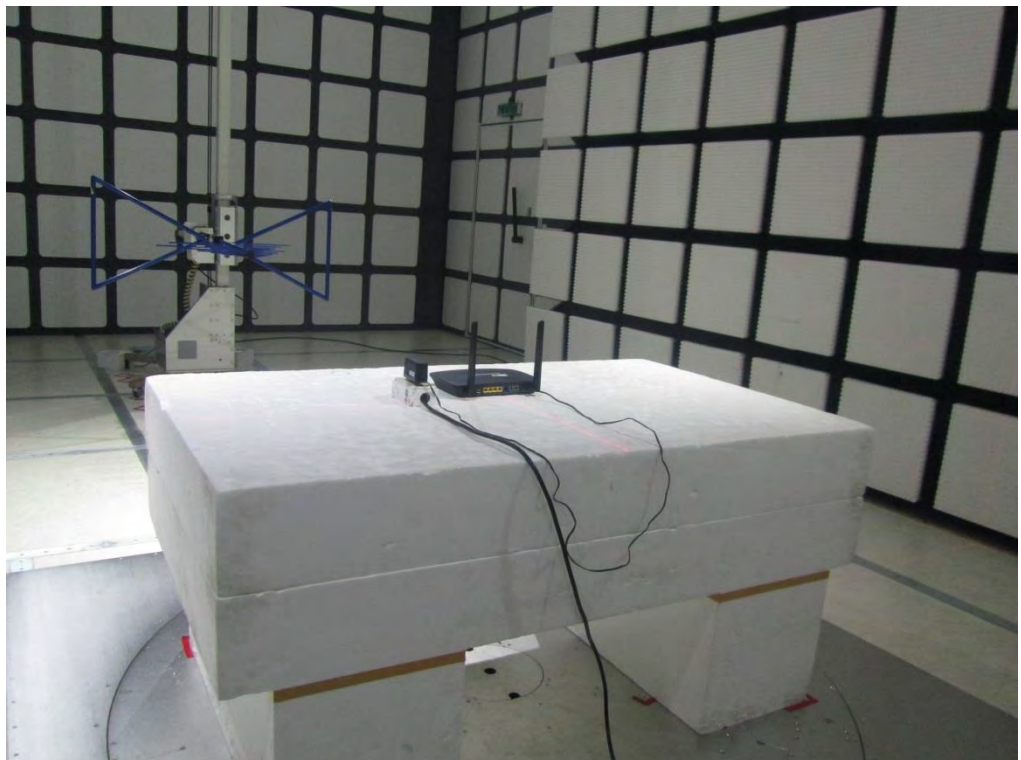
For radiated emissions below 1GHz

Non- Beamforming

Front view

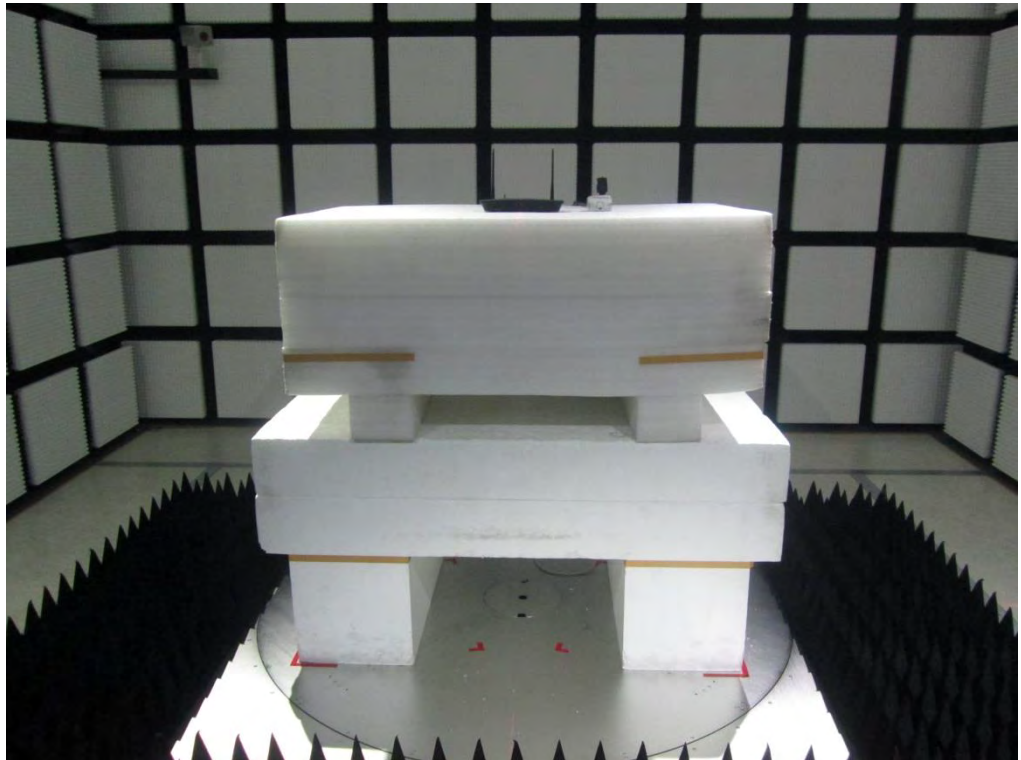


Rear view

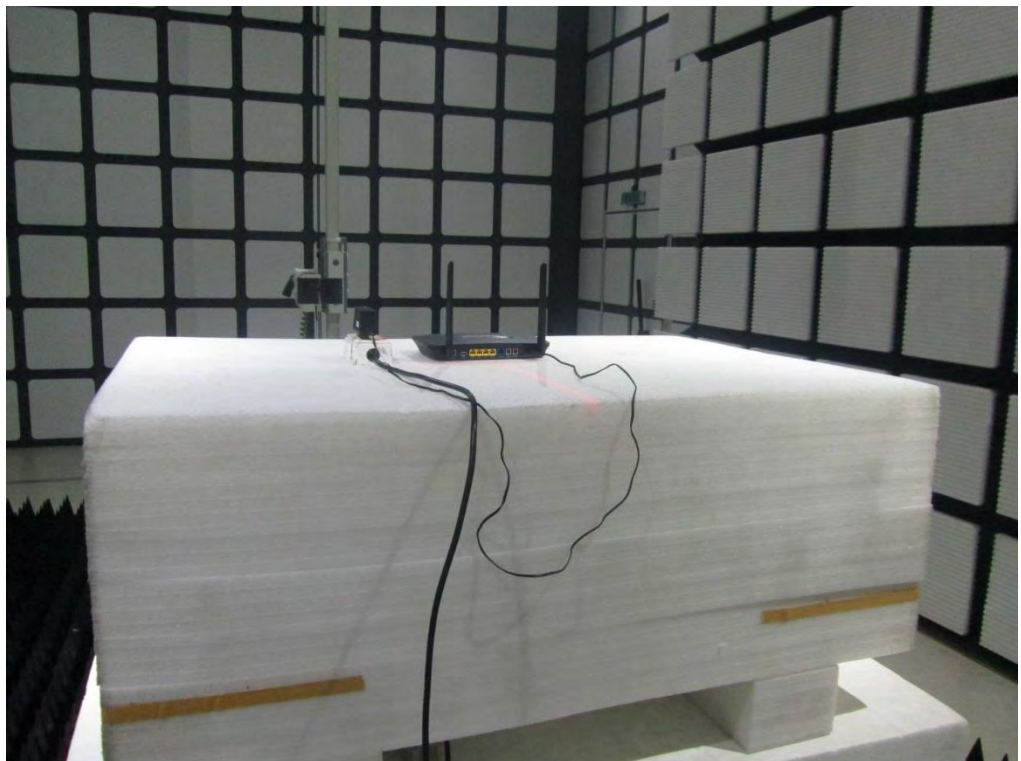


For radiated emissions above 1GHz
Non- Beamforming

Front view



Rear view

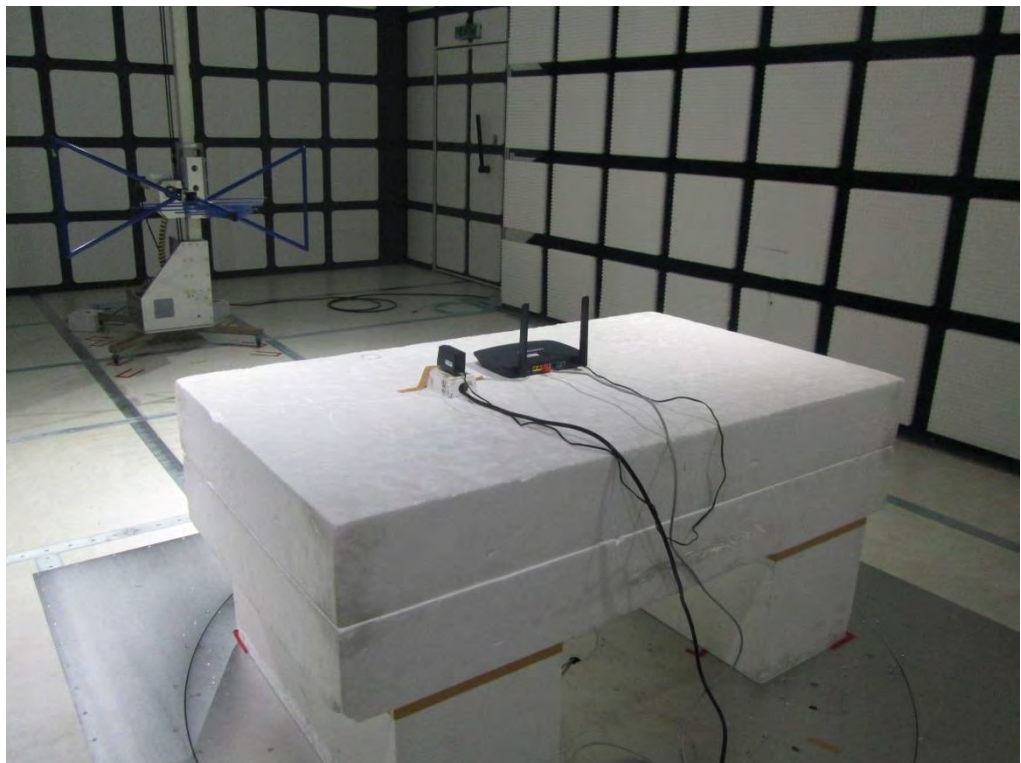


**For radiated emissions below 1GHz
Beamforming**

Front view

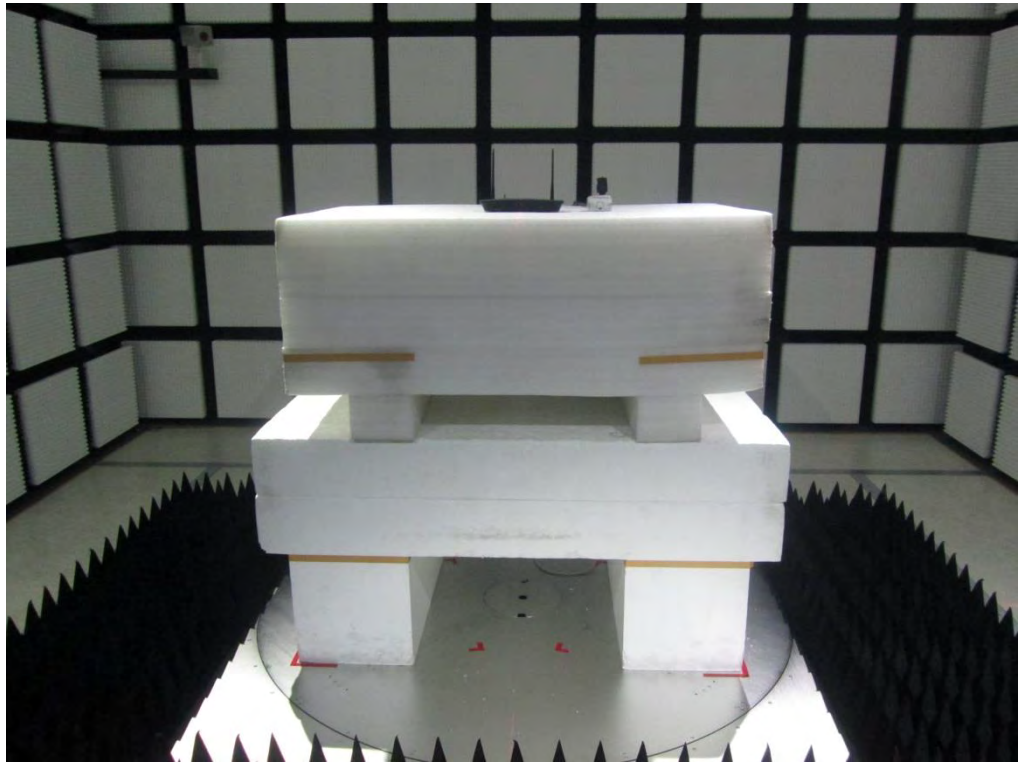


Rear view



**For radiated emissions above 1GHz
Beamforming**

Front view



Rear view

