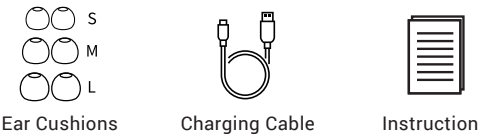
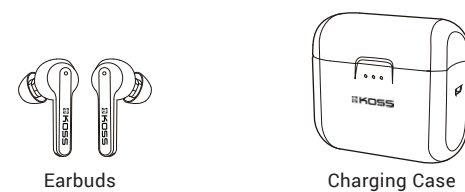




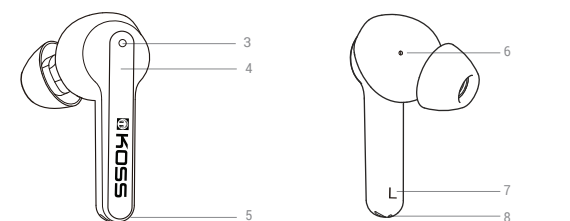
INSTRUCTIONS

Start Included



Product Overview

- 1. Charging case with battery life status lights
2. USB charging port
3. Earbud status light
4. Touch strip
5. Voice mic
6. Acoustical vent hole
7. L/R indicator
8. Magnetic charging contacts

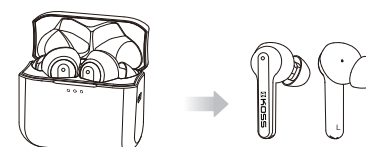


Specs

- 1. Bluetooth Version: Bluetooth V5.0
2. Input Power: 5.0V= 380mA
3. Charging time: < 2h

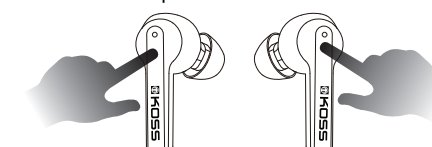
Power On Method 1

Open the charging case, the white lights will illuminate for 1 second. The earbuds will automatically power on.



Method 2

While earbuds are in an off state, touch and hold the touch strip of both earbuds for about 3 seconds, lights will illuminate for 1 second to show the earbuds are powered on.



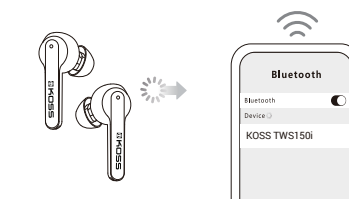
* Protective film must be removed from earbuds before they can be powered on and paired

Pairing Mobile Phones and Headphones

Power on the left and right earbuds as described in the "Power On" portion of this guide. Find and select "KOSS TWS150i" in the Bluetooth list.

NOTE:

- 1. When power is on, the earbuds will auto-connect with the last connected device within 10 seconds.
2. If the earbuds are not connected to any device, they will automatically turn off after 10 minutes



Connection Lost Bluetooth Off

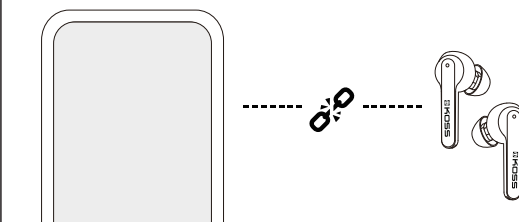
Problem: If Bluetooth on source device is turned off, the earbuds will automatically turn off after 10 minutes.

Solution: Make sure that the source device's Bluetooth is turned on; then power on earbuds again.

Out of Connection Range

Problem: If the connection between the device and the earbuds exceeds the effective range, the earbuds will power off automatically after 10 minutes.

Solution: Make sure that device is in range, then power on earbuds.



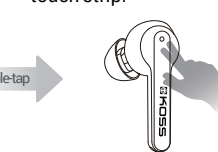
Hearing is Believing®

Incoming call

Answer Call

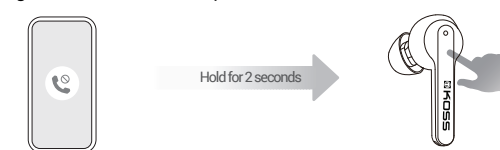


End Call



Reject Call:

Long hold the L/R touch strip for 2 seconds.



Music

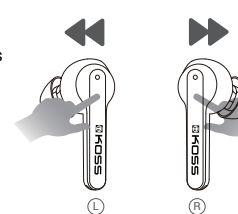
Pause/Play

Double tap the L/R earbud touch strip to pause/play music in standby or music mode. While paused: Indicator lights illuminate once every 5 seconds. While playing: Indicator lights illuminate once every 5 seconds



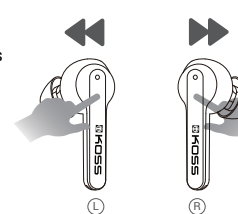
Next Track

Hold the right earbud touch strip for 2s. Note: This function is not supported when L earbuds are used alone.



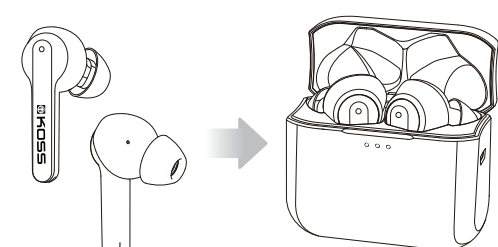
Previous Track

Hold the left earbud touch strip for 2s



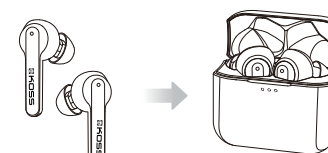
Power Off

Place the earbuds into the charging case and closed the lid to automatically power down earbuds.



Charging Earbuds Charging

Place the earbuds in the charging case. Charging: The left and right lights of the charging case will flash. Fully charged: No charging case lights are illuminated



LED Status When the Charging Case Charges the Earbuds

The L side charging case light slowly flashes when the L earbud is charging. The R side charging case light slowly flashes when the R earbud is charging. When L and R earbuds are charged at the same time, the L and R charging case lights slowly flash at the same time. When the earbud's batteries are full, the charging case lights will indicate the battery power level for 5 seconds.

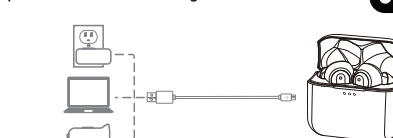
Charging Case Light Language

LED status when the charging case is charging

- When the power is below 30%, the left light flashes.
When the power is 30%~60%, the left light is always on and the center light flashes.
When the power is greater than 60%, the left and center lights are always on and the right light flashes.
When the power is 100%, all 3 lights remain on.

LED status when charging case is not charging

- When the power is below 10%, the left light flashes.
When the power is 10%~30%, the left light is on.
When the power is 30%~60%, the left and center lights are on.
When power is 70%~100%, all 3 lights remain on.



Safety and Care

Using earbuds at high volumes for extended periods of time may result in to low at all times for your safety.

Do not use while driving a car, cycling, operating machinery, or performing other activities that require hearing surrounding sounds.

Earbuds may not work properly under high temperature or high humidity conditions. Do not use any corrosive cleaner/oil to clean the earbuds. If the earbuds come in contact with liquids, quickly wipe away. If submerged in water, do not turn the earbuds on until completely dried.

Tips: liquid submergion voids the warranty. Keep the earbuds and packaging out of reach of children.

Battery warning!

- * Do not disassemble, strike, crush or put the battery into fire. Do not expose the battery to conductive materials, liquids, fire, or high temperatures.
* Do not allow metal objects to touch the two poles of the battery. Do not continue to use the battery if it has bulges, leaks, discoloration, odors, or any other abnormality.

- * Do not use the battery after it has been submerged in water.
* If the battery is used improperly, it may explode or leak, causing burns and other personal injuries. If the battery leaks, it should be carefully disposed of according to the local laws and regulations concerning battery disposal.

FCC Warning

This device complies with part 15 of the FCC Rules. Operation is subject to the following two conditions: (1) This device may not cause harmful interference, and (2) this device must accept any interference received, including interference that may cause undesired operation. Any Changes or modifications not expressly approved by the party responsible for compliance could void the user's authority to operate the equipment.

This equipment has been tested and found to comply with the limits for a Class B digital device, pursuant to part 15 of the FCC Rules. These limits are designed to provide reasonable protection against harmful interference in a residential installation. This equipment generates uses and can radiate radio frequency energy and, if not installed and used in accordance with the instructions, may cause harmful interference to radio communications. However, there is no guarantee that interference will not occur in a particular installation. If this equipment does cause harmful interference to radio or television reception, which can be determined by turning the equipment off and on, the user is encouraged to try to correct the interference by one or more of the following measures:

- Reorient or relocate the receiving antenna.
-Increase the separation between the equipment and receiver.
-Connect the equipment into an outlet on a circuit different from that to which the receiver is connected.
-Consult the dealer or an experienced radio/TV technician for help.
The device has been evaluated to meet general RF exposure requirement. The device can be used in portable exposure condition without restriction.

Lithium ion Battery: Model: 702334, 3.7V, 500mAh. GOLDEN GEL BATTERY CO. LTD. Yinhu Industrial Park, Jiayitang Management Zone Tngxia Town, Dongguan City, Guangzhou Province

Use the product in the environment with the temperature between 0 C and 45 C; Otherwise, it may damage your headset. For the following equipment: Product Name: Bluetooth Headset Brand Name: KOSS Model: KOSS TWS150i Corporation hereby declares that this [Name: Bluetooth Headset, Model: KOSS TWS150i] is in compliance with the essential requirements and other relevant provisions or directive 2014/53/EU.

KOSS Bluetooth Earbuds Model: KOSS TWS150i DC Input: 5V=380mA Battery Capacity: 500mAh 1.85Wh FCC ID: L76-KSTWSS20I Koss Corporation Made in China

