

108mm

570mm

Hearing is Believing®

Music

Music play/pause

Press Multifunction button once to play / pause music. (Some media devices may require you to start a media player first).

Next track/previous track

Press and hold the Volume + for 2 seconds to skip to next track. Press and hold the Volume - for 2 seconds to skip to previous track.

Volume up/volume down

Short press Volume + to incrementally increase the volume. Short press Volume - to incrementally decrease the volume.

Calling with voice assistant (Device support needed)

Double press the Multifunction button, wait for device prompt, and then speak a command.

Note: Media player is needed to support this functionality.

Call

Answer a call

Single press the Multifunction button, Volume +, or Volume -.

Reject a call

Press and hold the Multifunction button for 2 seconds.

End a call

Press the Multifunction button once.

End current call and answer new call

When a new call rings during a call, press the Multifunction button once to answer new call and end current call simultaneously.

Place current call on hold and answer new call

When a new call rings during an active call, double press the Multifunction button to hold current call and answer new call.

Reject the new call; hold the current call long press.

When a new call rings during an active call, single press the Multifunction button for 1 second to reject a new call, keeping the active call.

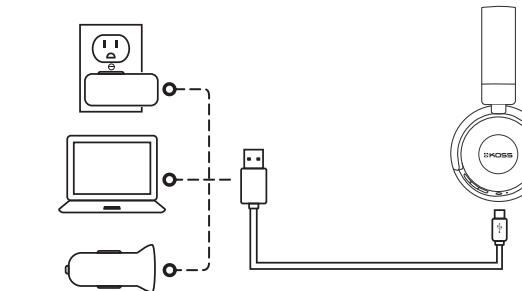
Mute on/off

Press the Volume - for 2 seconds to mute on/off.

Charging

It takes 2 hours to fully charge the headphones. While charging, the battery indicator light will be red. Charging is complete when the indicator light flashes blue.

Note: The lifetime of the battery will be significantly reduced if your headphones are left uncharged for a long period of time. We recommend that you recharge your headphones at least once a month.



Safety and Care

Using Headphones at high volumes for extended periods of time may result in permanent hearing damage. It is advised that you keep volume at moderate to low levels at all times for your safety.

Do not use while driving a car, cycling, operating machinery, or performing other activities that require you to hear surrounding sounds.

Headphones may not work properly in high temperatures or high humidity conditions.

Do not use any corrosive cleaner/oil to clean the headphones.

If the headphones come in contact with liquids, quickly wipe away. If submerged in water, do not turn the headphones on until completely dry. Submersion in liquid voids the warranty.

Keep the headphones and packaging out of reach of children.



INSTRUCTIONS

品名: H863-12说明书

发行日期:

料号:

版本: V1

更新日志

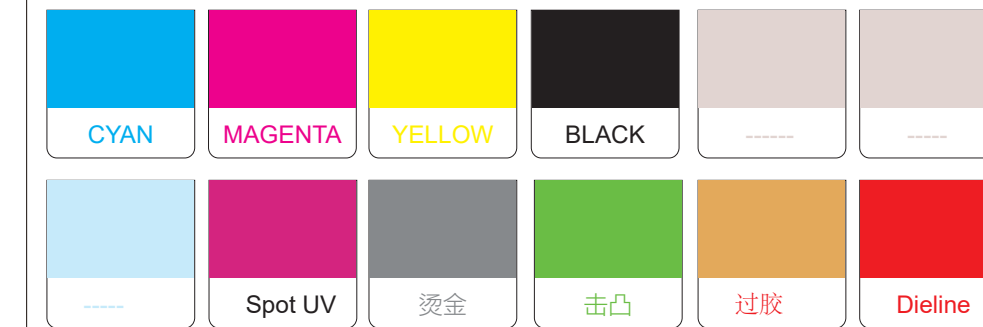
要求

尺寸: 570*108mm

材质: 100g书纸

工艺说明: 风琴折

颜色:



1. 使用材质足重足克;
2. 表面划伤面积小于总面积0.5%
3. 印刷色差小于10%;
4. 折合对齐、平整;
5. 展开正负公差小于2mm,折合正负公差小于1mm。

制作:

cannice

审核:

批准:

本资料所载之图案及文字均为科奈信科技有限公司的智慧财产。任何未经授权的影印、转写或照相之复制行为,将受到智慧财产权保护法之追究。

100g书纸

Lithium ion Battery:
Model:412033,3.7V,160mAh
COLDEN CEL BATTERY CO.,LTD.
Yinhu Industrial Park, Jiaoyitang Management Zone,
Tangxia Town Donggaun City,Guangzhou Province.

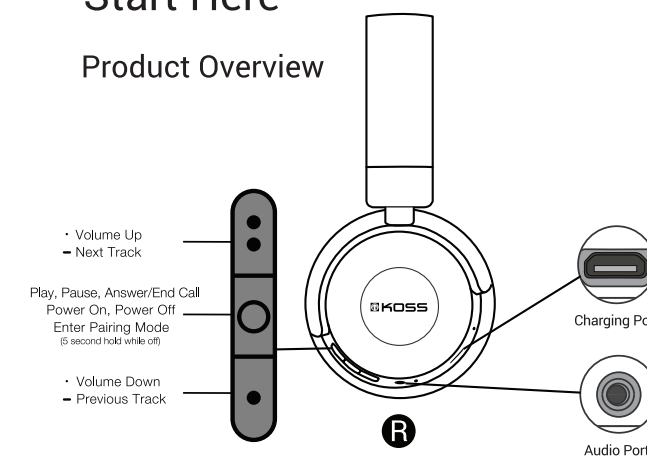
Use the product in the environment with the temperature Between 0 C and 45 C ; Otherwise, it may damage your headset. For the following equipment:Product Name: Bluetooth Headset Brand Name: KOSS Model: KOSS BT330i Corporation hereby declares that this [Name:Bluetooth Headset, Model: KOSS BT330i] is in compliance with the essential requirements and other relevant provisions or directive 2014/53/EU.

KOSS
Bluetooth Headset
Model: KOSS BT330i
DC Input: 5V±500mA
FCC ID: L76-BT330i
Battery Capacity:160mAh 0.592Wh
Koss Corporation Made in China

CE 214-108129
BC Bluetooth FC

Start Here

Product Overview



The following items are included:



Status Indicator

Function	LED status	Voice prompts
Power on	Blue light illuminated for 2 seconds	Power on
Power off	Red light illuminated for 2 seconds	Power off
Standby	Blue flashing once every 5 seconds	n/a
Pairing	Red and blue flashing alternately	Pairing
Battery low	Quick Red flashing	Battery level low
Charging	Red light on continuously	n/a
Fully charged	Blue light on continuously	n/a

When the distance between the headphones and device is beyond effective range, the headphones will disconnect with the device. The headphones will power off automatically once no activity has occurred for 5 minutes.

Pairing

Pair One Device

Note: When the headphones and device have been paired once, they will automatically connect when the headphones are on and Bluetooth is activated on the device.

1. Make sure the headphones are turned off and within are 1 meter of your device, press and hold the Multifunction button until the LED indicator flashes red and blue alternately (about 5 seconds), then release Multifunction button.
2. Activate Bluetooth on your device (see below for more details).
3. On your device, Settings.
4. Select Bluetooth. If Bluetooth is off, turn it on. The device will search for new devices automatically.
5. Select "KOSS BT330i" from the device menu.

Clear Paired List

Make sure the headphones are turned off, then press and hold the Multifunction button until the LED indicator flashes red and blue alternately (about 5 seconds), then release Multifunction button. Press volume + and volume - buttons at the same time until LED flashes blue, then alternates between red and blue. At this point the paired list is cleared and the headphones will enter into pairing mode the next time they are powered on.

Safety and care

Using headphones at high to moderate volumes for extended periods of time may result in permanent hearing damage. It is advised you keep volume levels moderate to low at all times for your safety.

Do not use while driving a car, cycling, operating machinery, or performing other activities that require you to hear surrounding sounds.

Earbuds may not work properly in high temperatures or high humidity conditions.

Do not use any corrosive cleaner/oil to clean the earbuds. If the earbuds come in contact with liquids, quickly wipe away. If submerged in water, do not turn the earbuds on until completely dry. Tips: liquid submersion voids the warranty.

Keep the earbuds and packaging out of reach of children .

Battery Warning!

* For devices with removable batteries must be recycled or handled properly. Disassembly is not allowed for products with the batteries that cannot be removed.

* Do not disassemble, strike, crush, or put the battery into fire. Do not expose the battery to conductive materials, liquids, fire, or high temperatures.

* Do not allow metal objects to touch the two poles of the battery. Do not continue to use the battery if it has bulges, leaks, discoloration, odors, or any other abnormality.

* Do not use the battery after it has been submerged in water.

* If the battery is used improperly, it may explode or leak, causing burns and other personal injuries. If the battery leaks, it should be carefully disposed of according to local laws and regulations concerning battery disposal.

FCC Statement

This equipment has been tested and found to comply with the limits for a Class B digital device, pursuant to Part 15 of the FCC Rules. These limits are designed to provide reasonable protection against harmful interference in a residential installation. This equipment generates electromagnetic energy and, if not installed and used in accordance with the instructions, may cause harmful interference with other radio communications. However, there is no installation. This his equipment generates uses and can radiate radio frequency energy and, if not installed and used in accordance with the instructions, may cause harmful interference to radio communications. However, there is no guarantee that interference will not occur in a particular installation. If this equipment does cause harmful interference to radio or television reception, which can be determined by turning the equipment off and on, the user is encouraged to try to correct the interference by one or more of the following measures:

- Reorient or relocate the receiving antenna.
 - Increase the separation between the equipment and receiver.
 - Connect the equipment into an outlet on a circuit different from that to which the receiver is connected.
 - Consult the dealer or an experienced radio/TV technician for help.
- This device complies with Part 15 of the FCC Rules. Operation is subject to the following two conditions:
(1) This device may not cause harmful interference, and (2) this device must accept any interference received, including interference that may cause undesired operation. Changes or modifications not expressly approved by the party responsible for compliance could void the user's authority to operate the equipment.