

FCC ID:L73RM-Y807

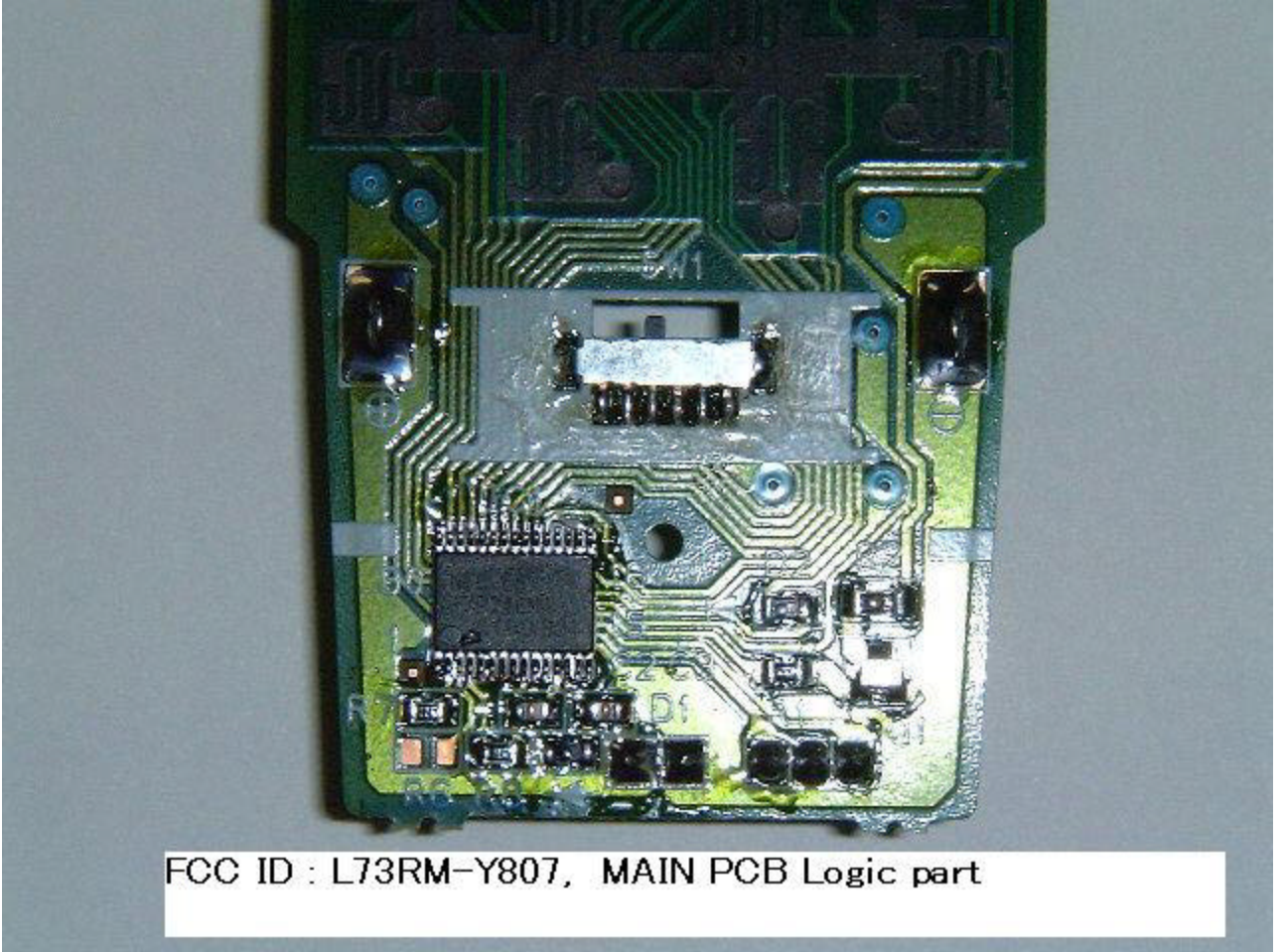
REAR VIEW:ENCLOSURE OPEND

You will see a RF unit mo  
on the printed circuit bo

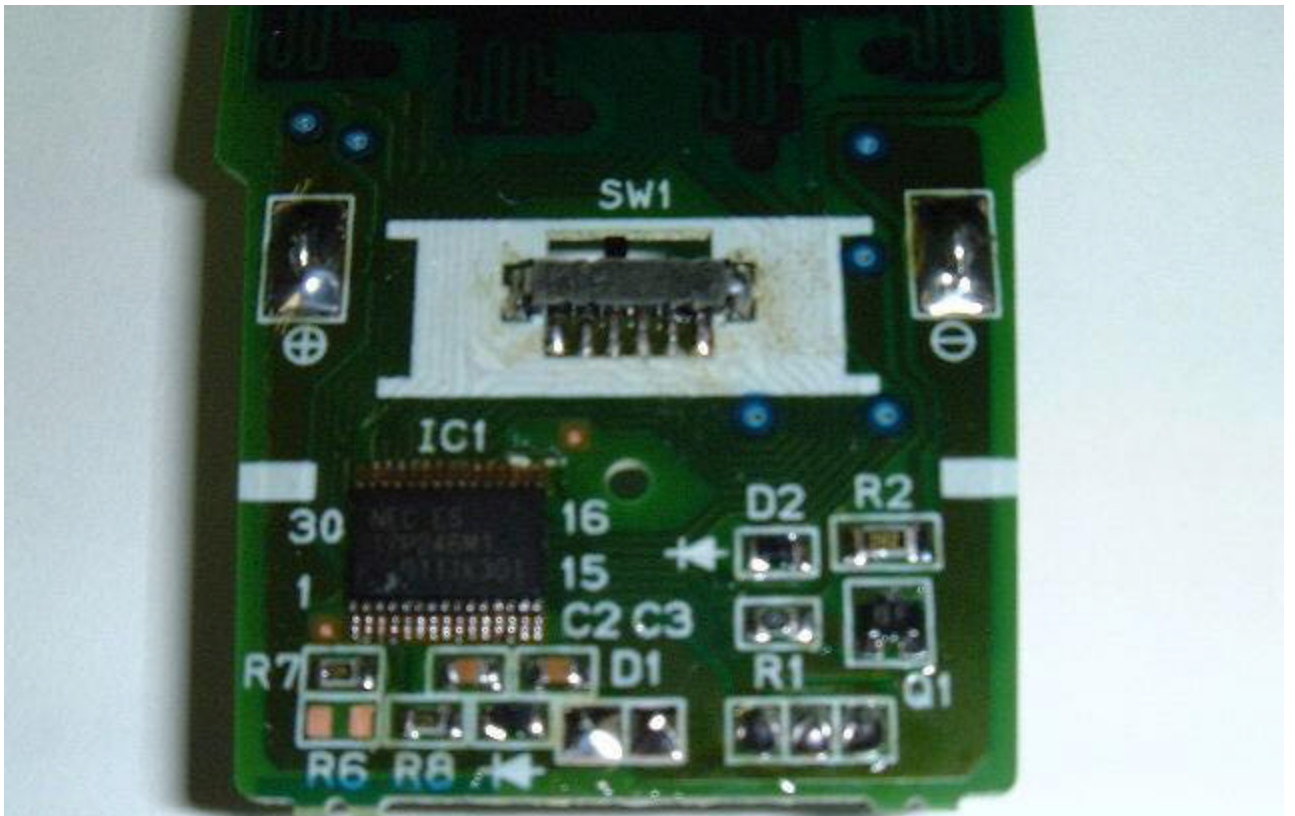


FCC ID : L73RM-Y807  
Main PCB bottom view

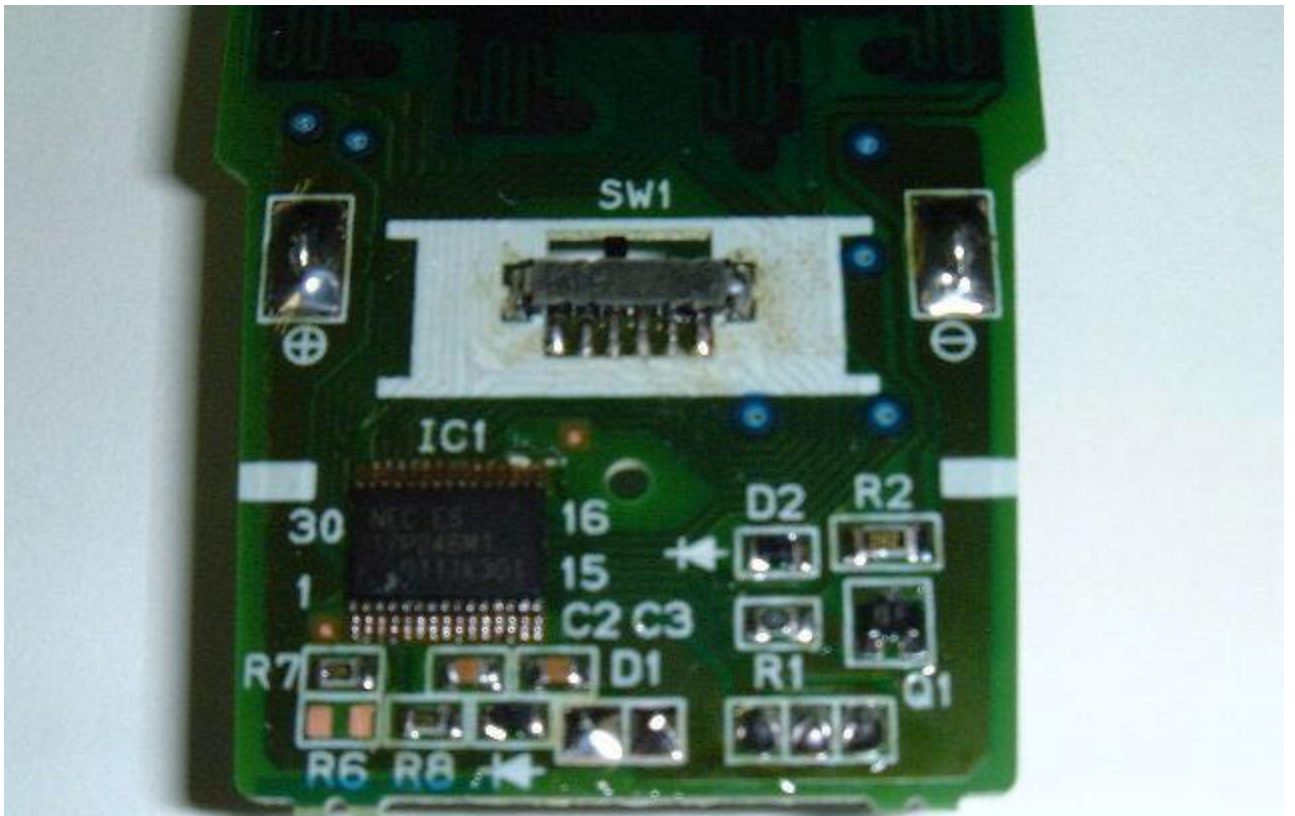




FCC ID : L73RM-Y807, MAIN PCB Logic part

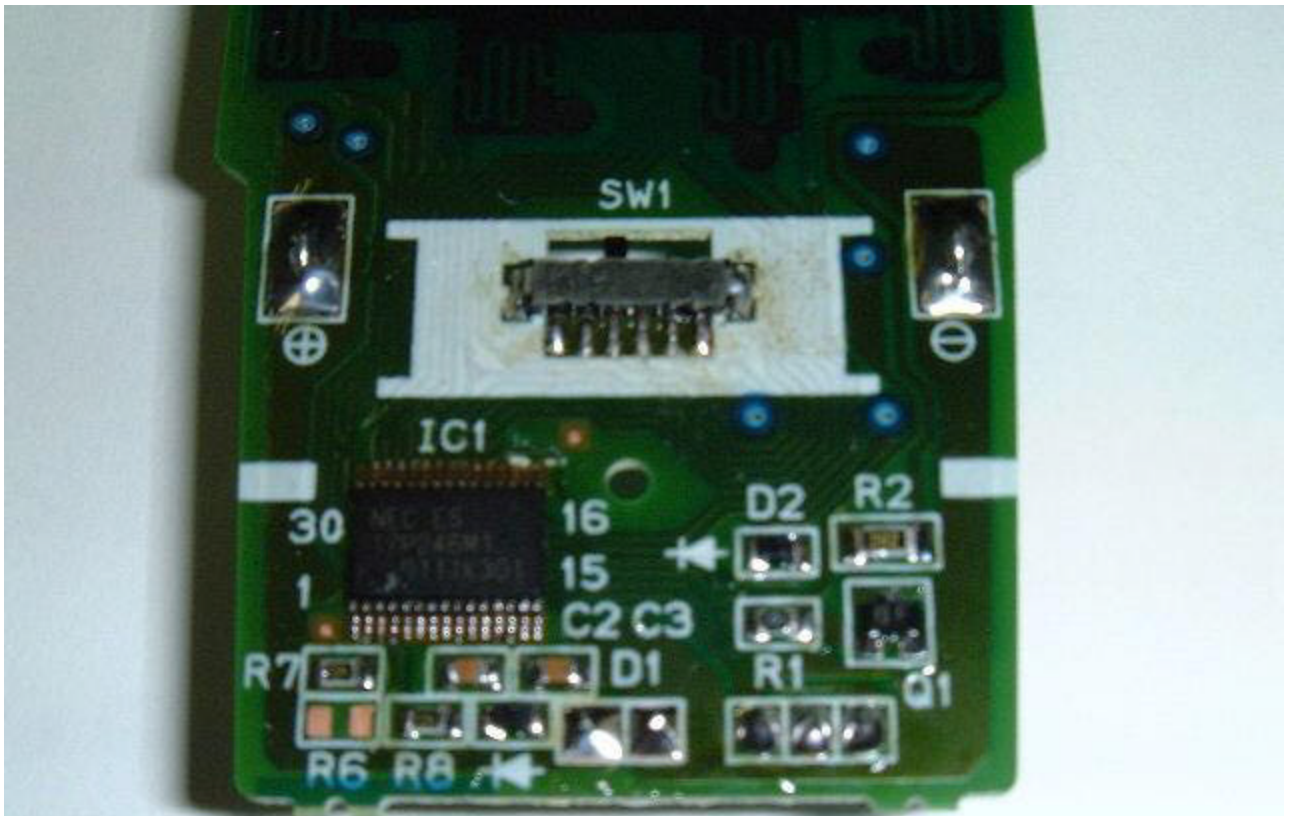


FCC ID : L73RM-Y807, Main PCB logic part.

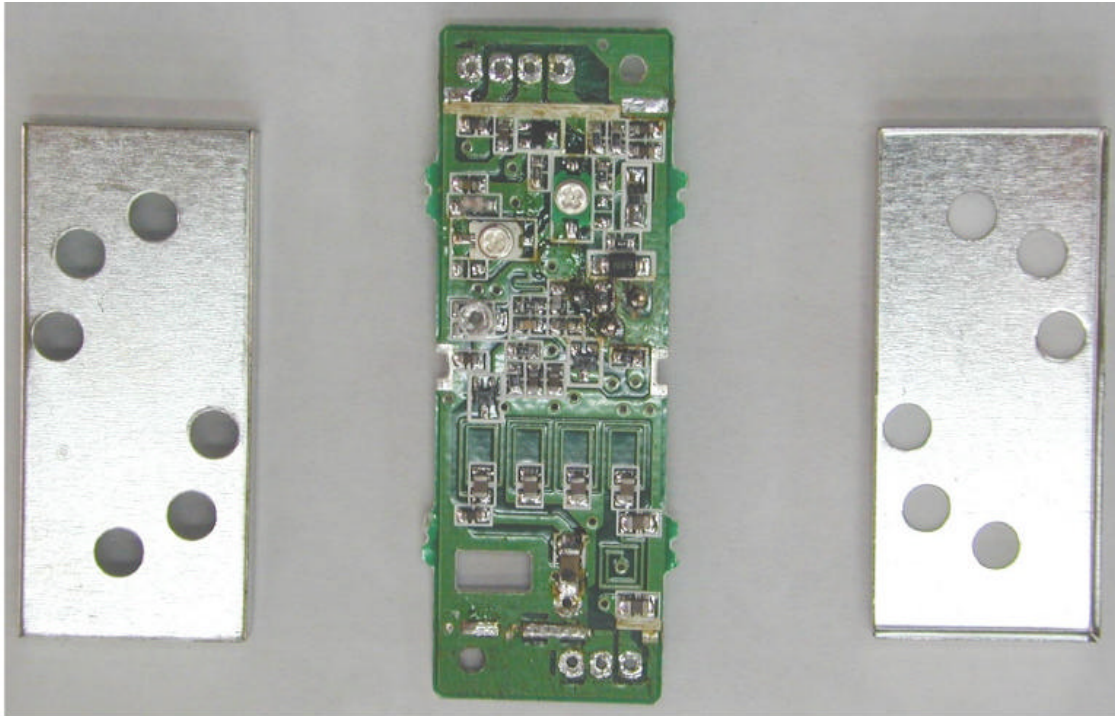


FCC ID : L73RM-Y807, Main PCB logic part





FCC ID : L73RM-Y807, Main PCB logic part



FCC ID:L73RM-Y807

RF UNIT:

SMT component side view.

Shielding covers are removed.