

#01_GSM850_GPRS (3 Tx slots)_Right Cheek_Ch189

Communication System: GSM850; Frequency: 836.4 MHz; Duty Cycle: 1:2.77

Medium: HSL_850_141126 Medium parameters used: $f = 836.4$ MHz; $\sigma = 0.923$ mho/m; $\epsilon_r = 41.2$; $\rho = 1000$ kg/m³

Ambient Temperature : 23.3 °C ; Liquid Temperature : 22.3 °C

DASY4 Configuration:

- Probe: EX3DV4 - SN3931; ConvF(10.32, 10.32, 10.32); Calibrated: 2014/9/25
- Sensor-Surface: 2mm (Mechanical Surface Detection)
- Electronics: DAE3 Sn577; Calibrated: 2014/10/6
- Phantom: SAM_Left; Type: SAM; Serial: TP-1303
- ;Postprocessing SW: SEMCAD, V1.8 Build 159

Ch189/Area Scan (61x111x1): Measurement grid: dx=15mm, dy=15mm

Maximum value of SAR (interpolated) = 0.473 mW/g

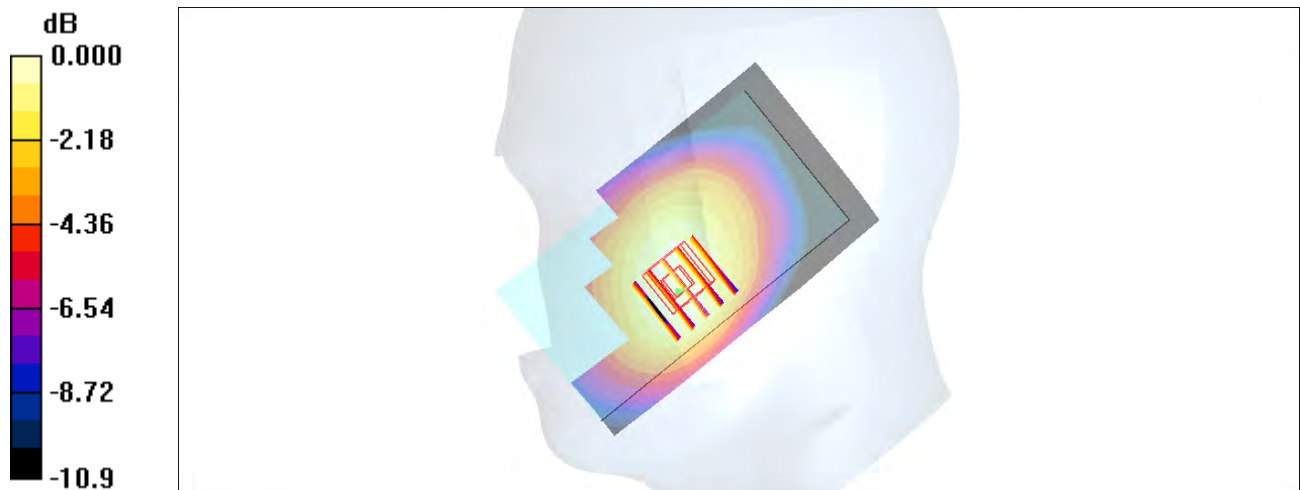
Ch189/Zoom Scan (5x5x7)/Cube 0: Measurement grid: dx=8mm, dy=8mm, dz=5mm

Reference Value = 22.9 V/m; Power Drift = 0.086 dB

Peak SAR (extrapolated) = 0.526 W/kg

SAR(1 g) = 0.420 mW/g; SAR(10 g) = 0.326 mW/g

Maximum value of SAR (measured) = 0.477 mW/g



#02_GSM1900_GPRS (4 Tx slots)_Right Cheek_Ch810

Communication System: PCS; Frequency: 1909.8 MHz; Duty Cycle: 1:2.08

Medium: HSL_1900_141126 Medium parameters used: $f = 1910 \text{ MHz}$; $\sigma = 1.44 \text{ mho/m}$; $\epsilon_r = 39.1$; $\rho = 1000 \text{ kg/m}^3$

Ambient Temperature : $23.3 \text{ }^\circ\text{C}$; Liquid Temperature : $22.3 \text{ }^\circ\text{C}$

DASY4 Configuration:

- Probe: EX3DV4 - SN3931; ConvF(8.17, 8.17, 8.17); Calibrated: 2014/9/25
- Sensor-Surface: 2mm (Mechanical Surface Detection)
- Electronics: DAE3 Sn577; Calibrated: 2014/10/6
- Phantom: SAM_Right; Type: SAM; Serial: TP-1303
- ;Postprocessing SW: SEMCAD, V1.8 Build 159

Ch810/Area Scan (61x111x1): Measurement grid: $dx=15\text{mm}$, $dy=15\text{mm}$

Maximum value of SAR (interpolated) = 0.249 mW/g

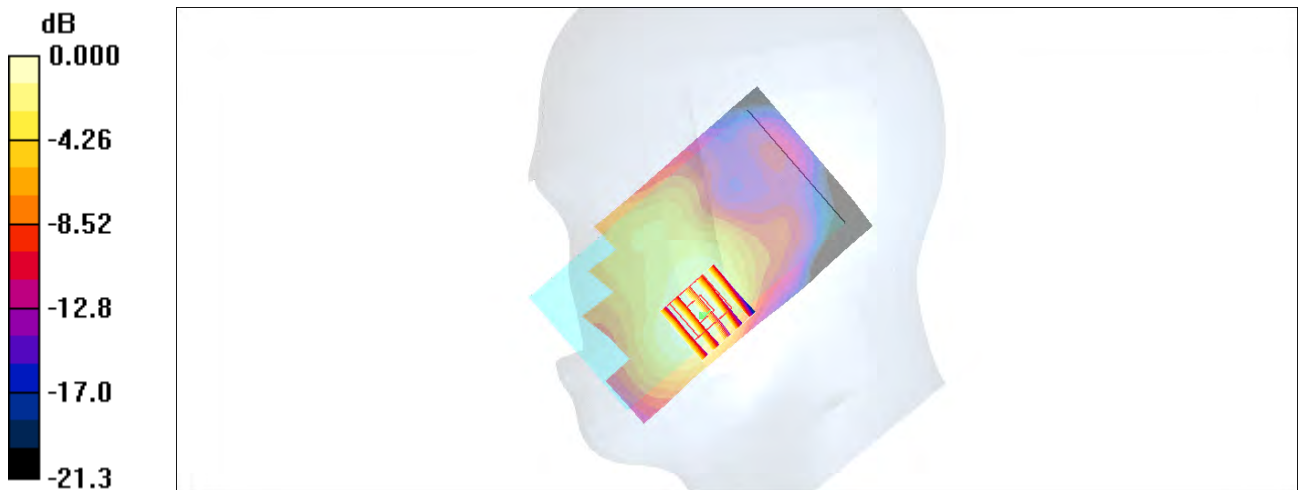
Ch810/Zoom Scan (5x5x7)/Cube 0: Measurement grid: $dx=8\text{mm}$, $dy=8\text{mm}$, $dz=5\text{mm}$

Reference Value = 13.3 V/m ; Power Drift = 0.101 dB

Peak SAR (extrapolated) = 0.294 W/kg

SAR(1 g) = 0.196 mW/g ; SAR(10 g) = 0.124 mW/g

Maximum value of SAR (measured) = 0.244 mW/g



0 dB = 0.244mW/g

#03_WCDMA V_RMC 12.2Kbps_Right Cheek_Ch4132

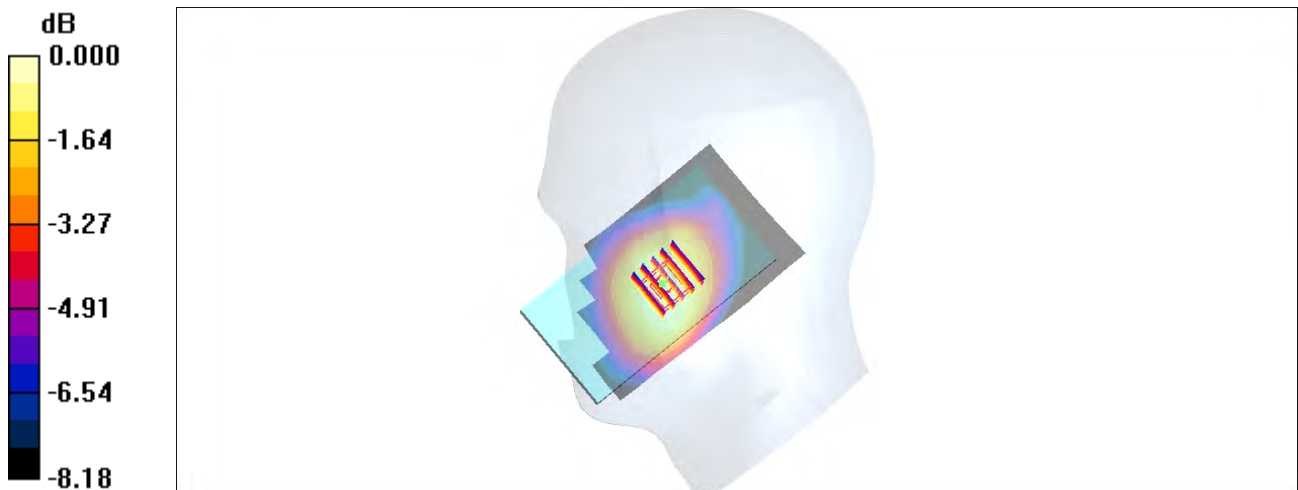
Communication System: WCDMA; Frequency: 826.4 MHz; Duty Cycle: 1:1
Medium: HSL_850_141204 Medium parameters used : $f = 826.4$ MHz; $\sigma = 0.895$ mho/m; $\epsilon_r = 41.1$; $\rho = 1000$ kg/m³
Ambient Temperature : 23.5 °C ; Liquid Temperature : 22.5 °C

DASY4 Configuration:

- Probe: EX3DV4 - SN3578; ConvF(8.59, 8.59, 8.59); Calibrated: 2014/6/24
- Sensor-Surface: 2mm (Mechanical Surface Detection)
- Electronics: DAE4 Sn1388; Calibrated: 2014/9/24
- Phantom: SAM_Right; Type: SAM; Serial: TP-1303
- ;Postprocessing SW: SEMCAD, V1.8 Build 159

Ch4132/Area Scan (61x111x1): Measurement grid: dx=15mm, dy=15mm
Maximum value of SAR (interpolated) = 0.378 mW/g

Ch4132/Zoom Scan (5x5x7)/Cube 0: Measurement grid: dx=8mm, dy=8mm, dz=5mm
Reference Value = 21.4 V/m; Power Drift = -0.047 dB
Peak SAR (extrapolated) = 0.421 W/kg
SAR(1 g) = 0.338 mW/g; SAR(10 g) = 0.262 mW/g
Maximum value of SAR (measured) = 0.389 mW/g



0 dB = 0.389mW/g

#04_WCDMA II_RMC 12.2Kbps_Right Cheek_Ch9538

Communication System: WCDMA; Frequency: 1907.6 MHz; Duty Cycle: 1:1

Medium: HSL_1900_141126 Medium parameters used: $f = 1908 \text{ MHz}$; $\sigma = 1.44 \text{ mho/m}$; $\epsilon_r = 39.2$; $\rho = 1000 \text{ kg/m}^3$

Ambient Temperature : $23.3 \text{ }^\circ\text{C}$; Liquid Temperature : $22.3 \text{ }^\circ\text{C}$

DASY4 Configuration:

- Probe: EX3DV4 - SN3931; ConvF(8.17, 8.17, 8.17); Calibrated: 2014/9/25
- Sensor-Surface: 2mm (Mechanical Surface Detection)
- Electronics: DAE3 Sn577; Calibrated: 2014/10/6
- Phantom: SAM_Right; Type: SAM; Serial: TP-1303
- ;Postprocessing SW: SEMCAD, V1.8 Build 159

Ch9538/Area Scan (61x111x1): Measurement grid: $dx=15\text{mm}$, $dy=15\text{mm}$

Maximum value of SAR (interpolated) = 0.356 mW/g

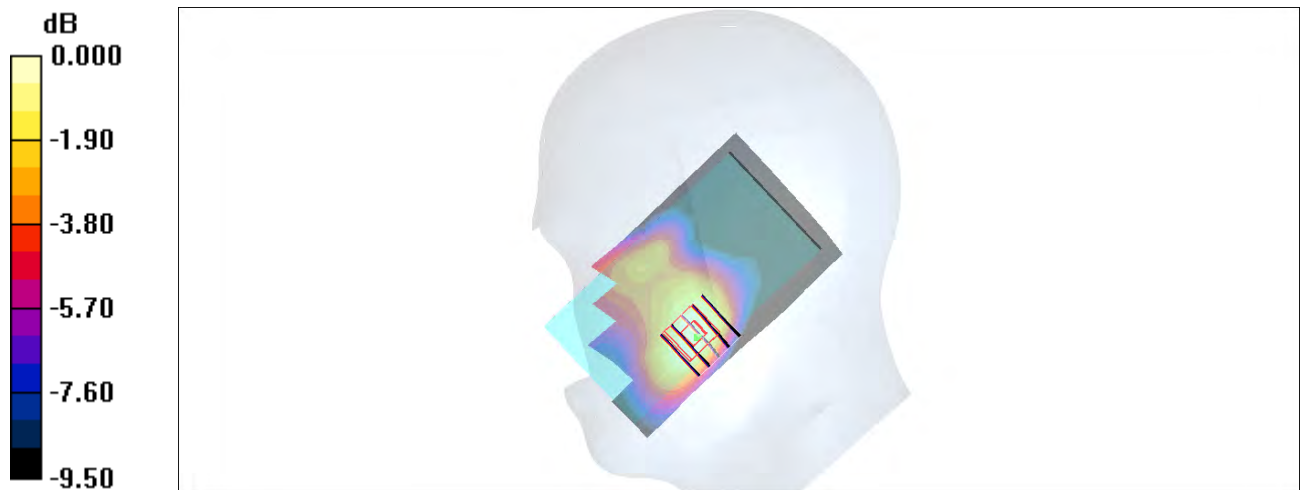
Ch9538/Zoom Scan (5x5x7)/Cube 0: Measurement grid: $dx=8\text{mm}$, $dy=8\text{mm}$, $dz=5\text{mm}$

Reference Value = 15.9 V/m ; Power Drift = 0.021 dB

Peak SAR (extrapolated) = 0.412 W/kg

SAR(1 g) = 0.280 mW/g ; SAR(10 g) = 0.179 mW/g

Maximum value of SAR (measured) = 0.341 mW/g



0 dB = 0.341mW/g

#05_WLAN2.4GHz_802.11b 1Mbps_Left Cheek_Ch6

Communication System: 802.11b ; Frequency: 2437 MHz;Duty Cycle: 1:1.164

Medium: HSL_2450_141129 Medium parameters used: $f = 2437$ MHz; $\sigma = 1.831$ S/m; $\epsilon_r = 39.335$; $\rho = 1000$ kg/m³

Ambient Temperature : 23.6 °C; Liquid Temperature : 22.6 °C

DASY5 Configuration

- Probe: ES3DV3 - SN3270; ConvF(4.52, 4.52, 4.52); Calibrated: 2014/9/26;
- Sensor-Surface: 3mm (Mechanical Surface Detection)
- Electronics: DAE4 Sn778; Calibrated: 2014/8/21
- Phantom: SAM LEFT; Type: QD000P40CD; Serial: TP:1718
- Measurement SW: DASY52, Version 52.8 (7); SEMCAD X Version 14.6.10 (7164)

Configuration/Ch6/Area Scan (71x141x1): Interpolated grid: dx=1.200 mm, dy=1.200 mm

Maximum value of SAR (interpolated) = 0.0731 W/kg

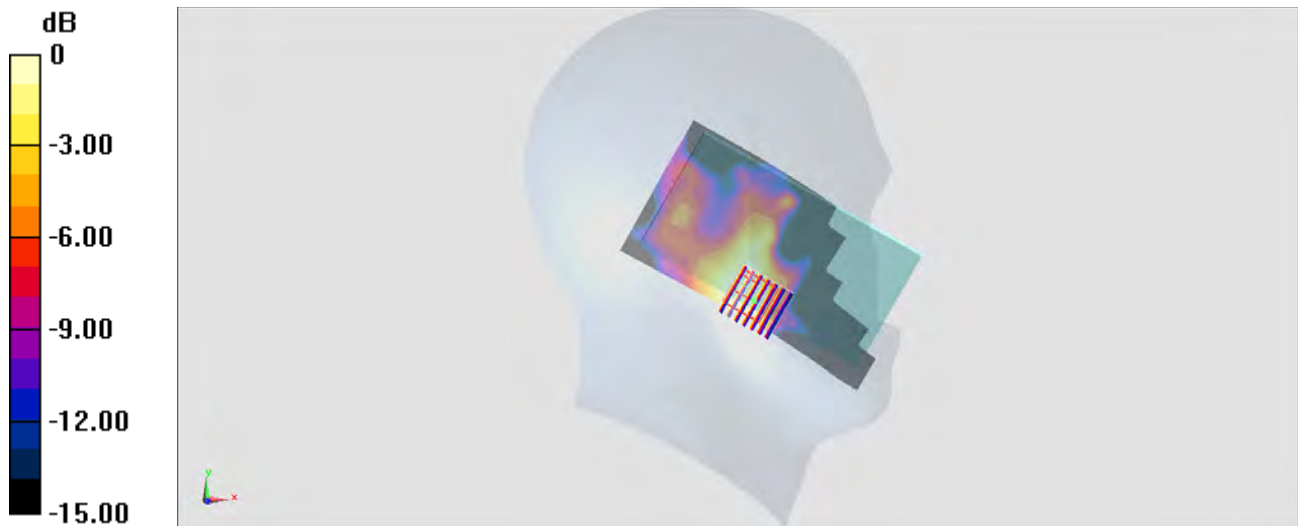
Configuration/Ch6/Zoom Scan (7x7x7)/Cube 0: Measurement grid: dx=5mm, dy=5mm, dz=5mm

Reference Value = 5.883 V/m; Power Drift = 0.10 dB

Peak SAR (extrapolated) = 0.0840 W/kg

SAR(1 g) = 0.045 W/kg; SAR(10 g) = 0.024 W/kg

Maximum value of SAR (measured) = 0.0545 W/kg



0 dB = 0.0545 W/kg = -12.64 dBW/kg

#06_GSM850_GPRS (3 Tx slots)_Back_1cm_Ch189

Communication System: GSM850; Frequency: 836.4 MHz; Duty Cycle: 1:2.77

Medium: MSL_850_141126 Medium parameters used: $f = 836.4$ MHz; $\sigma = 0.998$ mho/m; $\epsilon_r = 54.8$; $\rho = 1000$ kg/m³

Ambient Temperature : 23.3 °C ; Liquid Temperature : 22.3 °C

DASY4 Configuration:

- Probe: EX3DV4 - SN3931; ConvF(10.13, 10.13, 10.13); Calibrated: 2014/9/25
- Sensor-Surface: 2mm (Mechanical Surface Detection)
- Electronics: DAE3 Sn577; Calibrated: 2014/10/6
- Phantom: SAM_Right; Type: SAM; Serial: TP-1303
- ;Postprocessing SW: SEMCAD, V1.8 Build 159

Ch189/Area Scan (61x111x1): Measurement grid: dx=15mm, dy=15mm

Maximum value of SAR (interpolated) = 0.752 mW/g

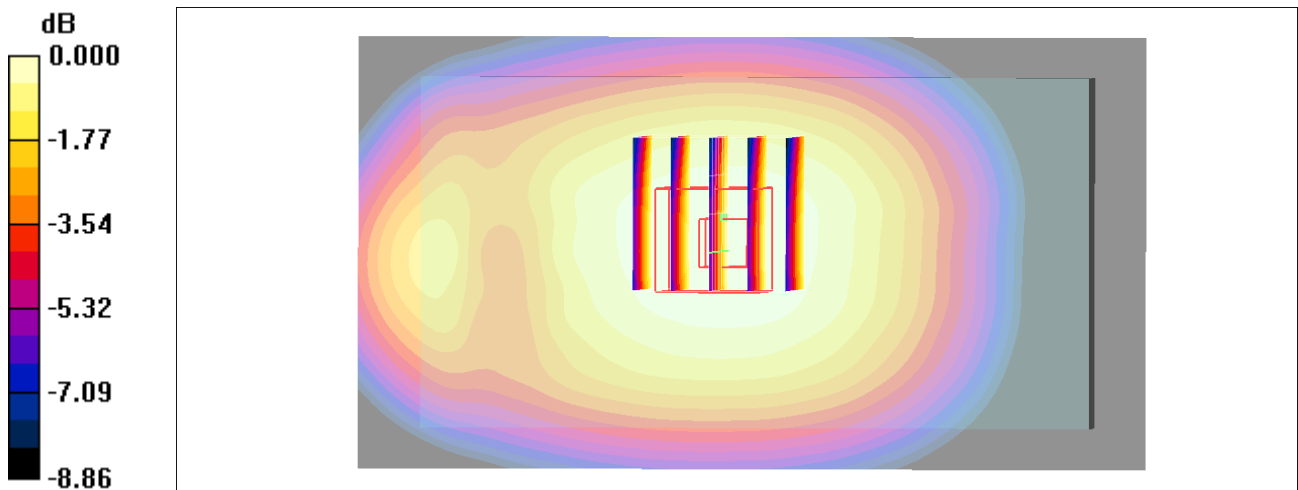
Ch189/Zoom Scan (5x5x7)/Cube 0: Measurement grid: dx=8mm, dy=8mm, dz=5mm

Reference Value = 28.1 V/m; Power Drift = 0.039 dB

Peak SAR (extrapolated) = 0.833 W/kg

SAR(1 g) = 0.665 mW/g; SAR(10 g) = 0.511 mW/g

Maximum value of SAR (measured) = 0.760 mW/g



0 dB = 0.760mW/g

#07_GSM1900_GPRS (4 Tx slots)_Bottom Side_1cm_Ch810

Communication System: PCS; Frequency: 1909.8 MHz; Duty Cycle: 1:2.08

Medium: MSL_1900_141125 Medium parameters used: $f = 1909.8 \text{ MHz}$; $\sigma = 1.54 \text{ mho/m}$; $\epsilon_r = 52.6$;

$\rho = 1000 \text{ kg/m}^3$

Ambient Temperature : $23.2 \text{ }^\circ\text{C}$; Liquid Temperature : $22.2 \text{ }^\circ\text{C}$

DASY4 Configuration:

- Probe: EX3DV4 - SN3931; ConvF(7.8, 7.8, 7.8); Calibrated: 2014/9/25
- Sensor-Surface: 2mm (Mechanical Surface Detection)
- Electronics: DAE3 Sn577; Calibrated: 2014/10/6
- Phantom: SAM_Right; Type: SAM; Serial: TP-1303
- ;Postprocessing SW: SEMCAD, V1.8 Build 159

Ch810/Area Scan (31x61x1): Measurement grid: $dx=15\text{mm}$, $dy=15\text{mm}$

Maximum value of SAR (interpolated) = 0.838 mW/g

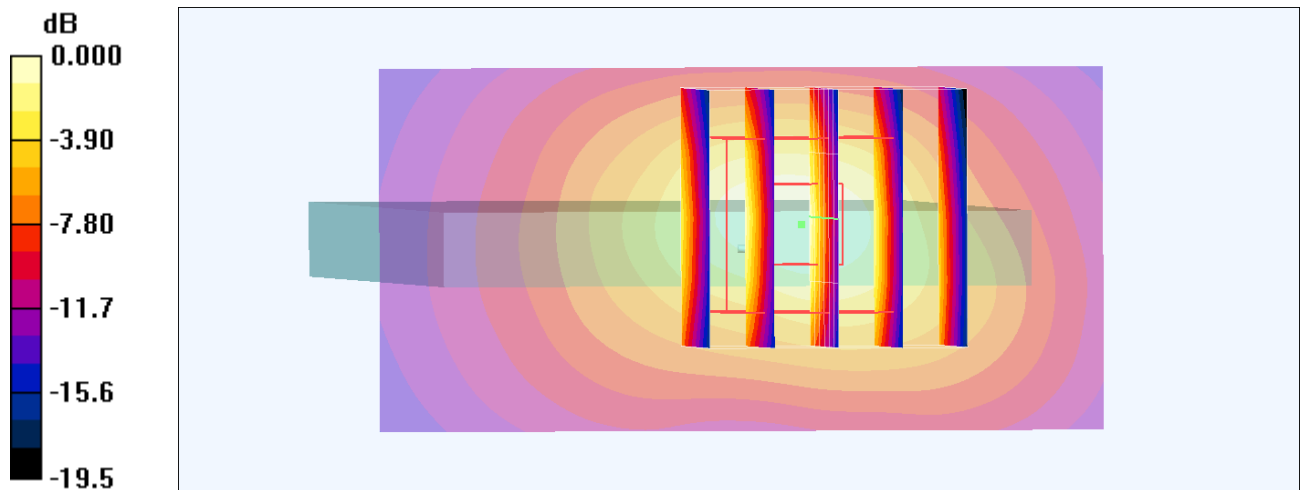
Ch810/Zoom Scan (5x5x7)/Cube 0: Measurement grid: $dx=8\text{mm}$, $dy=8\text{mm}$, $dz=5\text{mm}$

Reference Value = 24.0 V/m ; Power Drift = -0.072 dB

Peak SAR (extrapolated) = 1.01 W/kg

SAR(1 g) = 0.578 mW/g ; SAR(10 g) = 0.296 mW/g

Maximum value of SAR (measured) = 0.809 mW/g



0 dB = 0.809mW/g

#08_WCDMA V_RMC 12.2Kbps_Back_1cm_Ch4132

Communication System: WCDMA; Frequency: 826.4 MHz; Duty Cycle: 1:1

Medium: MSL_850_141204 Medium parameters used: $f = 826.4$ MHz; $\sigma = 0.985$ mho/m; $\epsilon_r = 54.8$; $\rho = 1000$ kg/m³

Ambient Temperature : 23.5 °C ; Liquid Temperature : 22.5 °C

DASY4 Configuration:

- Probe: EX3DV4 - SN3578; ConvF(8.48, 8.48, 8.48); Calibrated: 2014/6/24
- Sensor-Surface: 2mm (Mechanical Surface Detection)
- Electronics: DAE4 Sn1388; Calibrated: 2014/9/24
- Phantom: SAM_Right; Type: SAM; Serial: TP-1303
- ;Postprocessing SW: SEMCAD, V1.8 Build 159

Ch4132/Area Scan (61x111x1): Measurement grid: dx=15mm, dy=15mm

Maximum value of SAR (interpolated) = 0.760 mW/g

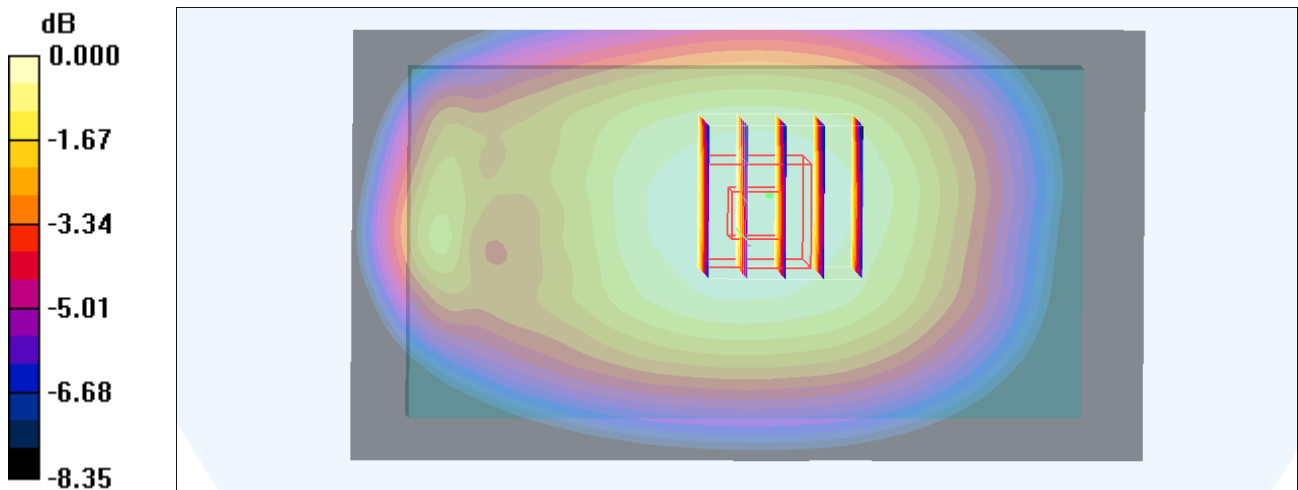
Ch4132/Zoom Scan (5x5x7)/Cube 0: Measurement grid: dx=8mm, dy=8mm, dz=5mm

Reference Value = 28.6 V/m; Power Drift = 0.055 dB

Peak SAR (extrapolated) = 0.841 W/kg

SAR(1 g) = 0.674 mW/g; SAR(10 g) = 0.523 mW/g

Maximum value of SAR (measured) = 0.768 mW/g



0 dB = 0.768mW/g

#09_WCDMA II_RMC 12.2Kbps_Back_1cm_Ch9400

Communication System: WCDMA; Frequency: 1880 MHz; Duty Cycle: 1:1

Medium: MSL_1900_141125 Medium parameters used: $f = 1880 \text{ MHz}$; $\sigma = 1.51 \text{ mho/m}$; $\epsilon_r = 52.7$; $\rho = 1000 \text{ kg/m}^3$

Ambient Temperature : $23.2 \text{ }^\circ\text{C}$; Liquid Temperature : $22.2 \text{ }^\circ\text{C}$

DASY4 Configuration:

- Probe: EX3DV4 - SN3931; ConvF(7.8, 7.8, 7.8); Calibrated: 2014/9/25
- Sensor-Surface: 2mm (Mechanical Surface Detection)
- Electronics: DAE3 Sn577; Calibrated: 2014/10/6
- Phantom: SAM_Right; Type: SAM; Serial: TP-1303
- ;Postprocessing SW: SEMCAD, V1.8 Build 159

Ch9400/Area Scan (61x111x1): Measurement grid: $dx=15\text{mm}$, $dy=15\text{mm}$

Maximum value of SAR (interpolated) = 1.50 mW/g

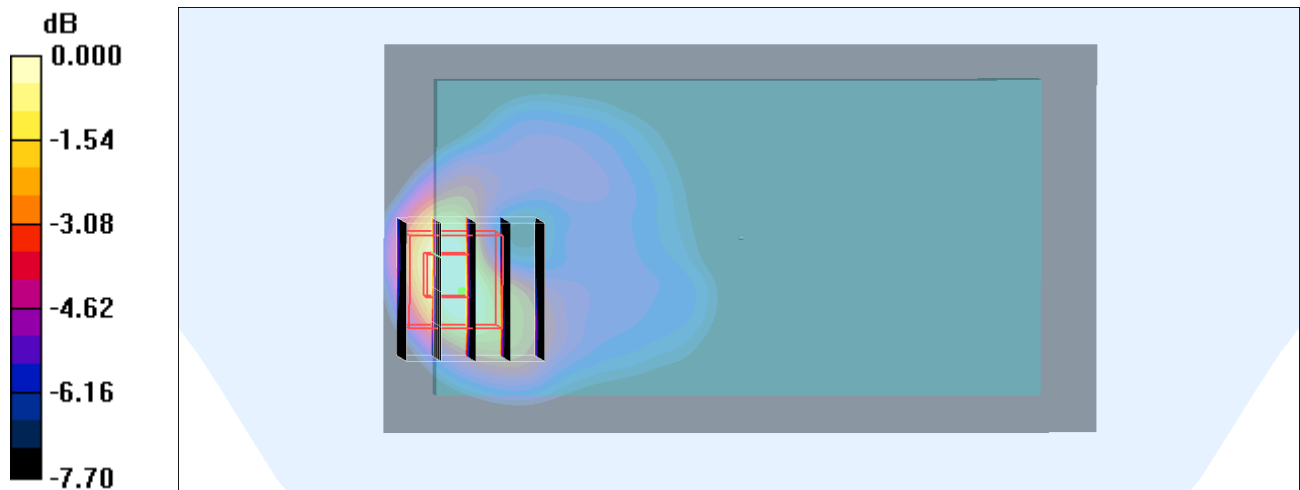
Ch9400/Zoom Scan (5x5x7)/Cube 0: Measurement grid: $dx=8\text{mm}$, $dy=8\text{mm}$, $dz=5\text{mm}$

Reference Value = 31.2 V/m ; Power Drift = -0.023 dB

Peak SAR (extrapolated) = 1.92 W/kg

SAR(1 g) = 1.06 mW/g ; SAR(10 g) = 0.545 mW/g

Maximum value of SAR (measured) = 1.42 mW/g



0 dB = 1.42mW/g

#10_WLAN2.4GHz_802.11b 1Mbps_Back_1cm_Ch6

Communication System: 802.11b ; Frequency: 2437 MHz; Duty Cycle: 1:1.164

Medium: MSL_2450_141130 Medium parameters used: $f = 2437$ MHz; $\sigma = 2.001$ S/m; $\epsilon_r = 53.912$; $\rho = 1000$ kg/m³

Ambient Temperature : 23.6 °C ; Liquid Temperature : 22.6 °C

DASY5 Configuration

- Probe: ES3DV3 - SN3270; ConvF(4.29, 4.29, 4.29); Calibrated: 2014/9/26;
- Sensor-Surface: 3mm (Mechanical Surface Detection)
- Electronics: DAE4 Sn778; Calibrated: 2014/8/21
- Phantom: SAM_RIGHT; Type: QD000P40CD; Serial: 1719
- Measurement SW: DASY52, Version 52.8 (7); SEMCAD X Version 14.6.10 (7164)

Configuration/Ch6/Area Scan (81x141x1): Interpolated grid: dx=1.200 mm, dy=1.200 mm
 Maximum value of SAR (interpolated) = 0.0973 W/kg

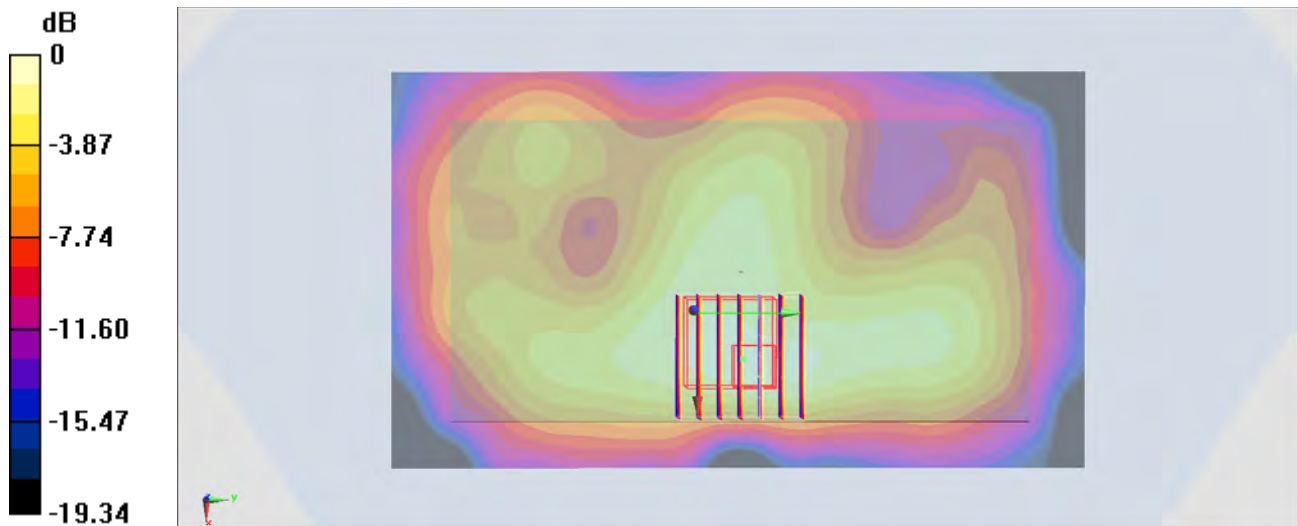
Configuration/Ch6/Zoom Scan (7x7x7)/Cube 0: Measurement grid: dx=5mm, dy=5mm, dz=5mm

Reference Value = 6.944 V/m; Power Drift = -0.01 dB

Peak SAR (extrapolated) = 0.153 W/kg

SAR(1 g) = 0.073 W/kg; SAR(10 g) = 0.038 W/kg

Maximum value of SAR (measured) = 0.0948 W/kg



0 dB = 0.0948 W/kg = -10.23 dBW/kg

#11_GSM850_GPRS (3 Tx slots)_Back_1cm_Ch189

Communication System: GSM850; Frequency: 836.4 MHz; Duty Cycle: 1:2.77

Medium: MSL_850_141126 Medium parameters used: $f = 836.4$ MHz; $\sigma = 0.998$ mho/m; $\epsilon_r = 54.8$; $\rho = 1000$ kg/m³

Ambient Temperature : 23.3 °C ; Liquid Temperature : 22.3 °C

DASY4 Configuration:

- Probe: EX3DV4 - SN3931; ConvF(10.13, 10.13, 10.13); Calibrated: 2014/9/25
- Sensor-Surface: 2mm (Mechanical Surface Detection)
- Electronics: DAE3 Sn577; Calibrated: 2014/10/6
- Phantom: SAM_Right; Type: SAM; Serial: TP-1303
- ;Postprocessing SW: SEMCAD, V1.8 Build 159

Ch189/Area Scan (61x111x1): Measurement grid: dx=15mm, dy=15mm

Maximum value of SAR (interpolated) = 0.752 mW/g

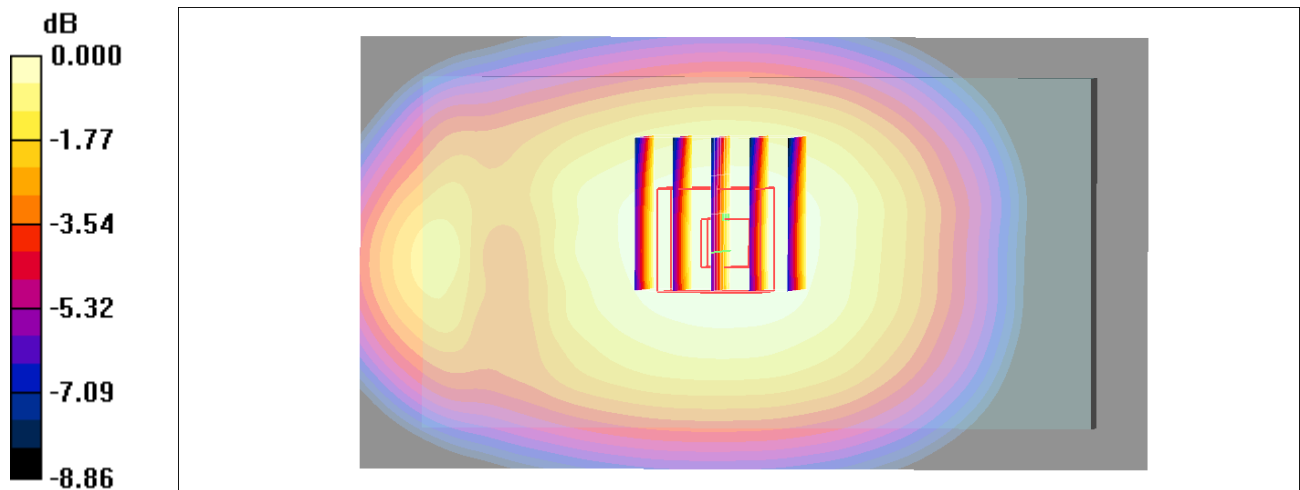
Ch189/Zoom Scan (5x5x7)/Cube 0: Measurement grid: dx=8mm, dy=8mm, dz=5mm

Reference Value = 28.1 V/m; Power Drift = 0.039 dB

Peak SAR (extrapolated) = 0.833 W/kg

SAR(1 g) = 0.665 mW/g; SAR(10 g) = 0.511 mW/g

Maximum value of SAR (measured) = 0.760 mW/g



0 dB = 0.760mW/g

#12_GSM1900_GPRS (4 Tx slots)_Back_1cm_Ch810

Communication System: PCS; Frequency: 1909.8 MHz; Duty Cycle: 1:2.08

Medium: MSL_1900_141125 Medium parameters used: $f = 1909.8 \text{ MHz}$; $\sigma = 1.54 \text{ mho/m}$; $\epsilon_r = 52.6$;

$\rho = 1000 \text{ kg/m}^3$

Ambient Temperature : $23.2 \text{ }^\circ\text{C}$; Liquid Temperature : $22.2 \text{ }^\circ\text{C}$

DASY4 Configuration:

- Probe: EX3DV4 - SN3931; ConvF(7.8, 7.8, 7.8); Calibrated: 2014/9/25
- Sensor-Surface: 2mm (Mechanical Surface Detection)
- Electronics: DAE3 Sn577; Calibrated: 2014/10/6
- Phantom: SAM_Right; Type: SAM; Serial: TP-1303
- ;Postprocessing SW: SEMCAD, V1.8 Build 159

Ch810/Area Scan (61x111x1): Measurement grid: $dx=15\text{mm}$, $dy=15\text{mm}$

Maximum value of SAR (interpolated) = 0.807 mW/g

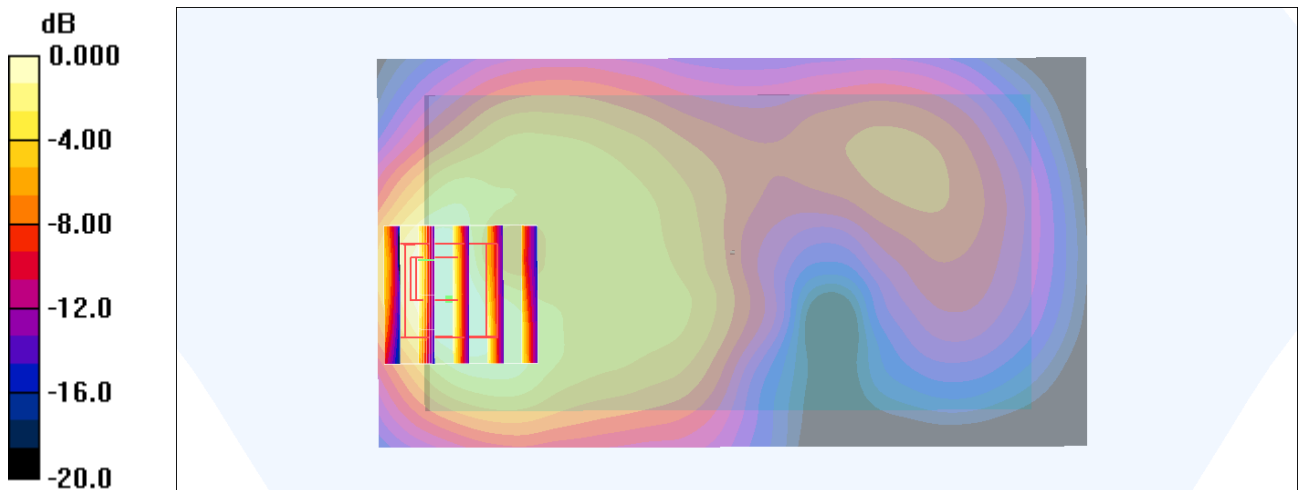
Ch810/Zoom Scan (5x5x7)/Cube 0: Measurement grid: $dx=8\text{mm}$, $dy=8\text{mm}$, $dz=5\text{mm}$

Reference Value = 23.0 V/m ; Power Drift = -0.038 dB

Peak SAR (extrapolated) = 1.02 W/kg

SAR(1 g) = 0.568 mW/g ; SAR(10 g) = 0.297 mW/g

Maximum value of SAR (measured) = 0.718 mW/g



0 dB = 0.718mW/g

#13_WCDMA V_RMC 12.2Kbps_Back_1cm_Ch4132

Communication System: WCDMA; Frequency: 826.4 MHz; Duty Cycle: 1:1

Medium: MSL_850_141204 Medium parameters used: $f = 826.4$ MHz; $\sigma = 0.985$ mho/m; $\epsilon_r = 54.8$; $\rho = 1000$ kg/m³

Ambient Temperature : 23.5 °C; Liquid Temperature : 22.5 °C

DASY4 Configuration:

- Probe: EX3DV4 - SN3578; ConvF(8.48, 8.48, 8.48); Calibrated: 2014/6/24
- Sensor-Surface: 2mm (Mechanical Surface Detection)
- Electronics: DAE4 Sn1388; Calibrated: 2014/9/24
- Phantom: SAM_Right; Type: SAM; Serial: TP-1303
- ;Postprocessing SW: SEMCAD, V1.8 Build 159

Ch4132/Area Scan (61x111x1): Measurement grid: dx=15mm, dy=15mm

Maximum value of SAR (interpolated) = 0.760 mW/g

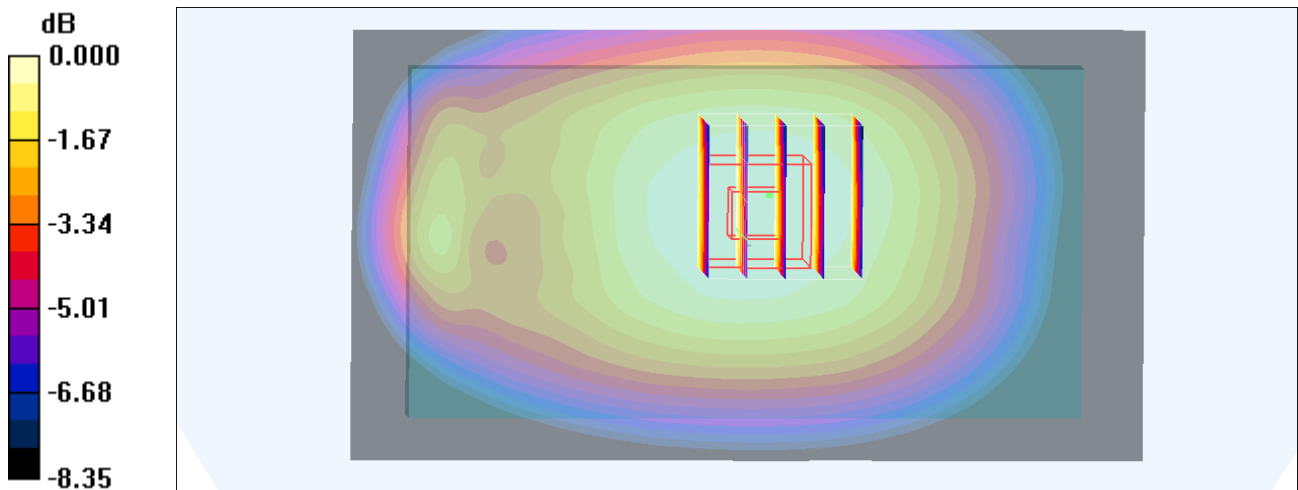
Ch4132/Zoom Scan (5x5x7)/Cube 0: Measurement grid: dx=8mm, dy=8mm, dz=5mm

Reference Value = 28.6 V/m; Power Drift = 0.055 dB

Peak SAR (extrapolated) = 0.841 W/kg

SAR(1 g) = 0.674 mW/g; SAR(10 g) = 0.523 mW/g

Maximum value of SAR (measured) = 0.768 mW/g



0 dB = 0.768mW/g

#14_WCDMA II_RMC 12.2Kbps_Back_1cm_Ch9400

Communication System: WCDMA; Frequency: 1880 MHz; Duty Cycle: 1:1

Medium: MSL_1900_141125 Medium parameters used: $f = 1880 \text{ MHz}$; $\sigma = 1.51 \text{ mho/m}$; $\epsilon_r = 52.7$; $\rho = 1000 \text{ kg/m}^3$

Ambient Temperature : $23.2 \text{ }^\circ\text{C}$; Liquid Temperature : $22.2 \text{ }^\circ\text{C}$

DASY4 Configuration:

- Probe: EX3DV4 - SN3931; ConvF(7.8, 7.8, 7.8); Calibrated: 2014/9/25
- Sensor-Surface: 2mm (Mechanical Surface Detection)
- Electronics: DAE3 Sn577; Calibrated: 2014/10/6
- Phantom: SAM_Right; Type: SAM; Serial: TP-1303
- ;Postprocessing SW: SEMCAD, V1.8 Build 159

Ch9400/Area Scan (61x111x1): Measurement grid: $dx=15\text{mm}$, $dy=15\text{mm}$

Maximum value of SAR (interpolated) = 1.50 mW/g

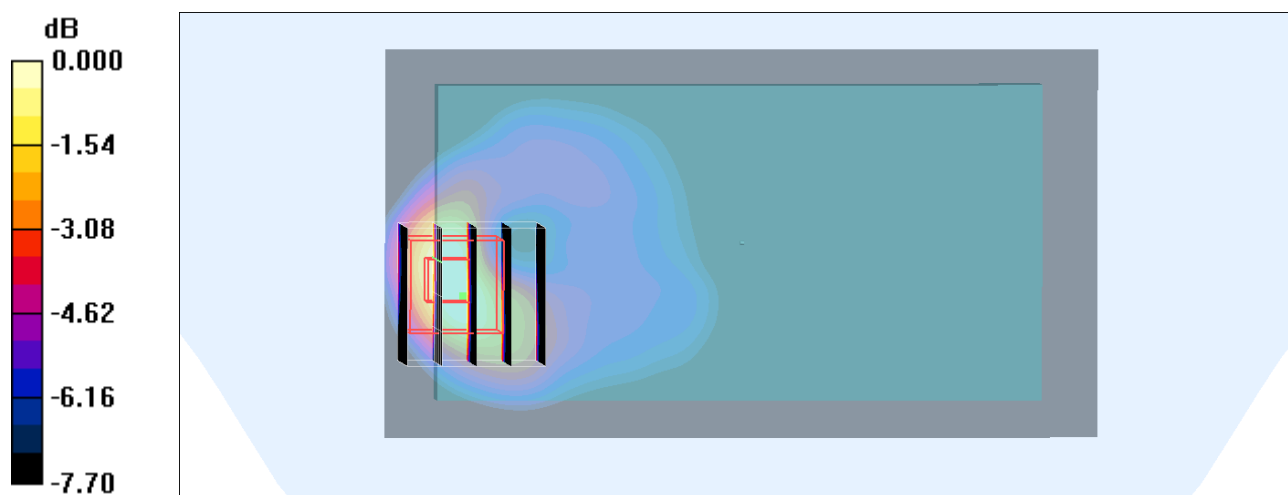
Ch9400/Zoom Scan (5x5x7)/Cube 0: Measurement grid: $dx=8\text{mm}$, $dy=8\text{mm}$, $dz=5\text{mm}$

Reference Value = 31.2 V/m ; Power Drift = -0.023 dB

Peak SAR (extrapolated) = 1.92 W/kg

SAR(1 g) = 1.06 mW/g ; SAR(10 g) = 0.545 mW/g

Maximum value of SAR (measured) = 1.42 mW/g



0 dB = 1.42mW/g

#15_WLAN2.4GHz_802.11b 1Mbps_Back_1cm_Ch6

Communication System: 802.11b ; Frequency: 2437 MHz;Duty Cycle: 1:1.164

Medium: MSL_2450_141130 Medium parameters used: $f = 2437$ MHz; $\sigma = 2.001$ S/m; $\epsilon_r = 53.912$; $\rho = 1000$ kg/m³

Ambient Temperature : 23.6 °C ; Liquid Temperature : 22.6 °C

DASY5 Configuration

- Probe: ES3DV3 - SN3270; ConvF(4.29, 4.29, 4.29); Calibrated: 2014/9/26;
- Sensor-Surface: 3mm (Mechanical Surface Detection)
- Electronics: DAE4 Sn778; Calibrated: 2014/8/21
- Phantom: SAM_RIGHT; Type: QD000P40CD; Serial: 1719
- Measurement SW: DASY52, Version 52.8 (7); SEMCAD X Version 14.6.10 (7164)

Configuration/Ch6/Area Scan (81x141x1): Interpolated grid: dx=1.200 mm, dy=1.200 mm
 Maximum value of SAR (interpolated) = 0.0973 W/kg

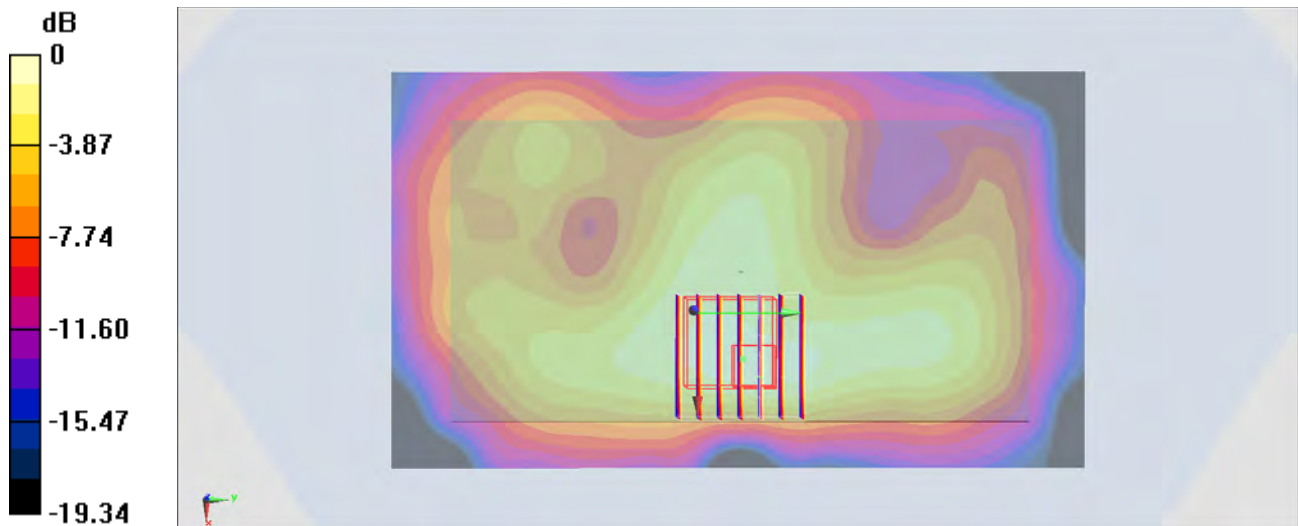
Configuration/Ch6/Zoom Scan (7x7x7)/Cube 0: Measurement grid: dx=5mm, dy=5mm, dz=5mm

Reference Value = 6.944 V/m; Power Drift = -0.01 dB

Peak SAR (extrapolated) = 0.153 W/kg

SAR(1 g) = 0.073 W/kg; SAR(10 g) = 0.038 W/kg

Maximum value of SAR (measured) = 0.0948 W/kg



0 dB = 0.0948 W/kg = -10.23 dBW/kg