	Document Appendix E for the BlackBerry® Smartphone Model RDR61CW/RDF31CW SAR Report			Page 1(11)
	Author Data Andrew Becker	Dates of Test May 3 – June 28, 2011 August 31 – October 05, 2011	Test Report No RTS-2604-1106-84A	FCC ID: L6ARDR60CW L6ARDF30CW

APPENDIX E: PHOTOGRAPHS


	Document Appendix E for the BlackBerry® Smartphone Model RDR61CW/RDF31CW SAR Report			Page 2(11)
	Author Data Andrew Becker	Dates of Test May 3 – June 28, 2011 August 31 – October 05, 2011	Test Report No RTS-2604-1106-84A	FCC ID: L6ARDR60CW L6ARDF30CW



Figure E1. BlackBerry Smartphone

Voice Microphone


	Document Appendix E for the BlackBerry® Smartphone Model RDR61CW/RDF31CW SAR Report			Page 3(11)
	Author Data Andrew Becker	Dates of Test May 3 – June 28, 2011 August 31 – October 05, 2011	Test Report No RTS-2604-1106-84A	FCC ID: L6ARDR60CW L6ARDF30CW



Figure E2. Body worn holster – front


	Document Appendix E for the BlackBerry® Smartphone Model RDR61CW/RDF31CW SAR Report			Page 4(11)
	Author Data Andrew Becker	Dates of Test May 3 – June 28, 2011 August 31 – October 05, 2011	Test Report No RTS-2604-1106-84A	FCC ID: L6ARDR60CW L6ARDF30CW



Figure E3. Body worn holsters – back


	Document Appendix E for the BlackBerry® Smartphone Model RDR61CW/RDF31CW SAR Report			Page 5(11)
	Author Data Andrew Becker	Dates of Test May 3 – June 28, 2011 August 31 – October 05, 2011	Test Report No RTS-2604-1106-84A	FCC ID: L6ARDR60CW L6ARDF30CW



Figure E4. Head configuration (Right Touch/Tilt)

Author Data
Andrew Becker

Dates of Test
May 3 – June 28, 2011
August 31 – October 05, 2011


Test Report No
RTS-2604-1106-84A

FCC ID:
L6ARDR60CW
L6ARDF30CW

IC ID
2503A-RDR60CW
2503A-RDF30CW



Figure E5. Head configuration (Left Touch/Tilt)

	Document Appendix E for the BlackBerry® Smartphone Model RDR61CW/RDF31CW SAR Report			Page 7(11)
	Author Data Andrew Becker	Dates of Test May 3 – June 28, 2011 August 31 – October 05, 2011	Test Report No RTS-2604-1106-84A	FCC ID: L6ARDR60CW L6ARDF30CW

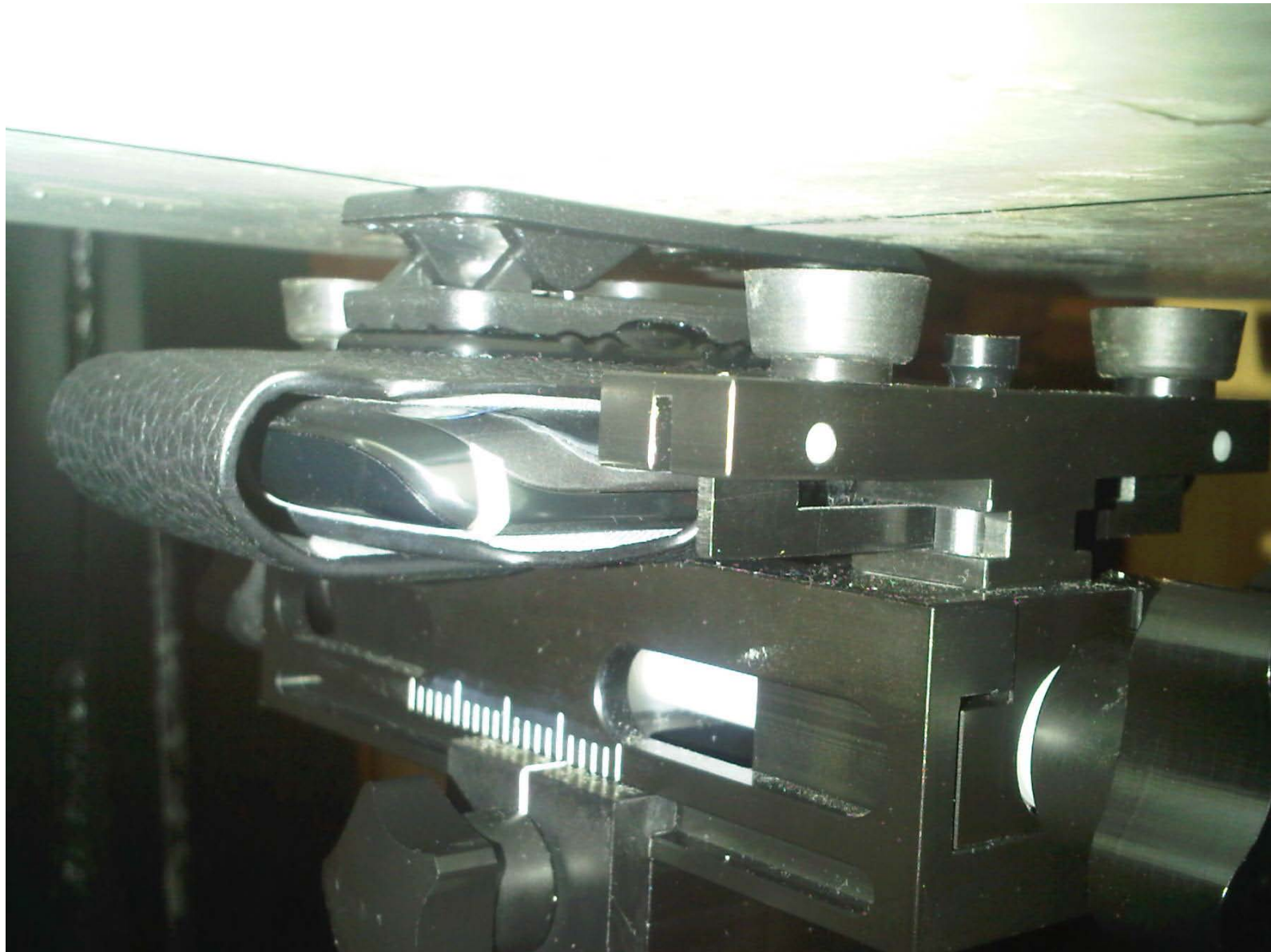



Figure E6. Body-worn configuration (Vertical Holster, back facing phantom)

	Document Appendix E for the BlackBerry® Smartphone Model RDR61CW/RDF31CW SAR Report			Page 8(11)
Author Data Andrew Becker	Dates of Test May 3 – June 28, 2011 August 31 – October 05, 2011	Test Report No RTS-2604-1106-84A	FCC ID: L6ARDR60CW L6ARDF30CW	IC ID 2503A-RDR60CW 2503A-RDF30CW


	Document Appendix E for the BlackBerry® Smartphone Model RDR61CW/RDF31CW SAR Report			Page 9(11)
	Author Data Andrew Becker	Dates of Test May 3 – June 28, 2011 August 31 – October 05, 2011	Test Report No RTS-2604-1106-84A	FCC ID: L6ARDR60CW L6ARDF30CW



Figure E7. Body-worn configuration (No Holster, back side 15mm away)


	Document Appendix E for the BlackBerry® Smartphone Model RDR61CW/RDF31CW SAR Report			Page 10(11)
	Author Data Andrew Becker	Dates of Test May 3 – June 28, 2011 August 31 – October 05, 2011	Test Report No RTS-2604-1106-84A	FCC ID: L6ARDR60CW L6ARDF30CW



Figure E8. Body-worn configuration (No Holster, front side 15mm away)


	Document Appendix E for the BlackBerry® Smartphone Model RDR61CW/RDF31CW SAR Report			Page 11(11)
	Author Data Andrew Becker	Dates of Test May 3 – June 28, 2011 August 31 – October 05, 2011	Test Report No RTS-2604-1106-84A	FCC ID: L6ARDR60CW L6ARDF30CW



Figure E9. Body-worn configuration (No Holster, headset, back 15mm away)