

<b>RTS</b> <b>RIM Testing Services</b>	Document <b>Annex C to Hearing Aid Compatibility RF Emissions Test Report for the BlackBerry® Smartphone model RCE21CW</b>		Page <b>1(5)</b>
Author Data <b>Daoud Attayi</b>	Dates of Test <b>Nov 18, Dec 09-10, 2008</b>	Report No <b>RTS-1364-0812-12</b>	FCC ID <b>L6ARCE20CW</b>

## Annex C: Test set up photos

<b>RTS</b> RIM Testing Services	Document <b>Annex C to Hearing Aid Compatibility RF Emissions Test Report for the BlackBerry® Smartphone model RCE21CW</b>		Page <b>2(5)</b>
	Author Data <b>Daoud Attayi</b>	Dates of Test <b>Nov 18, Dec 09-10, 2008</b>	Report No <b>RTS-1364-0812-12</b>

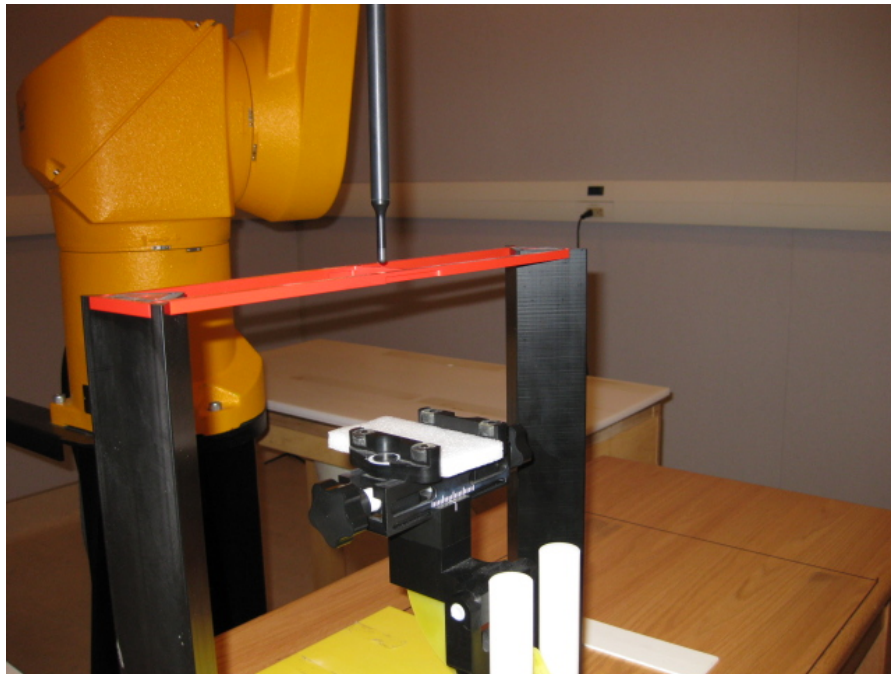
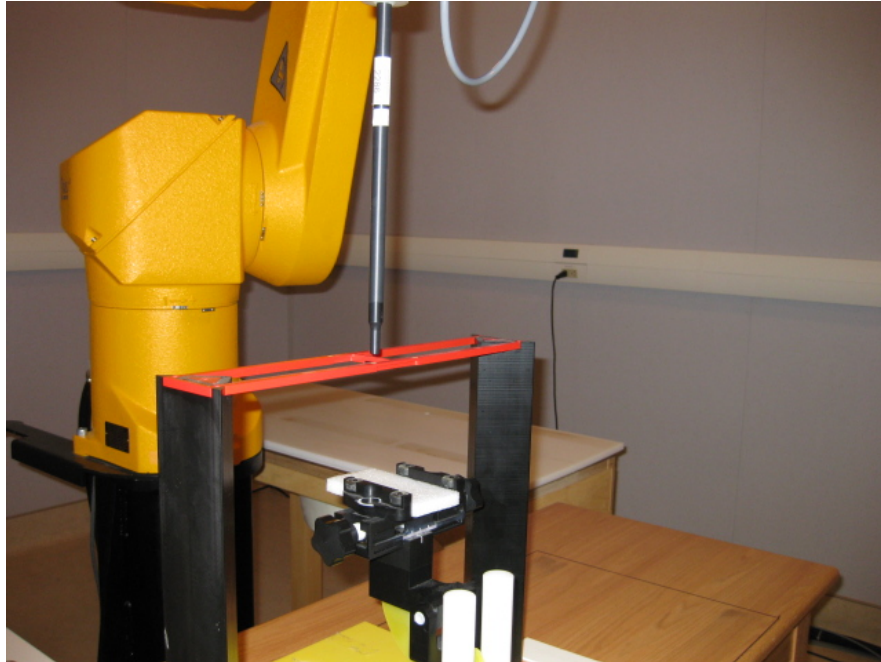
Acoustic/T-coil output center



Voice microphone

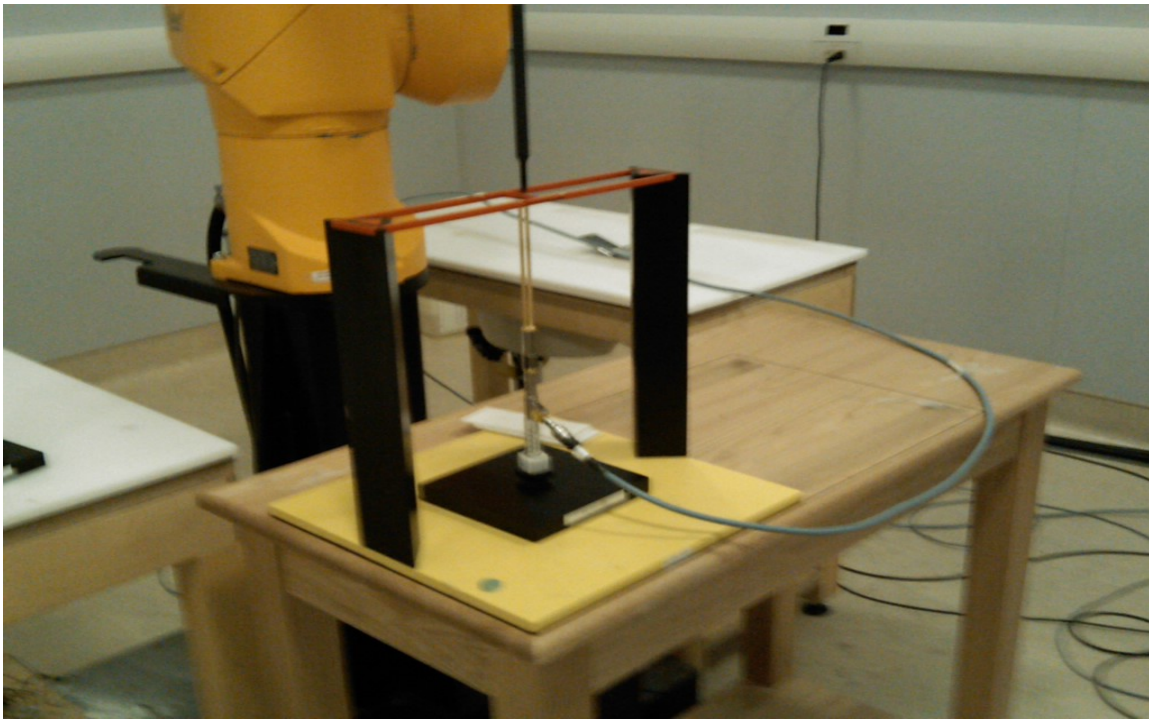
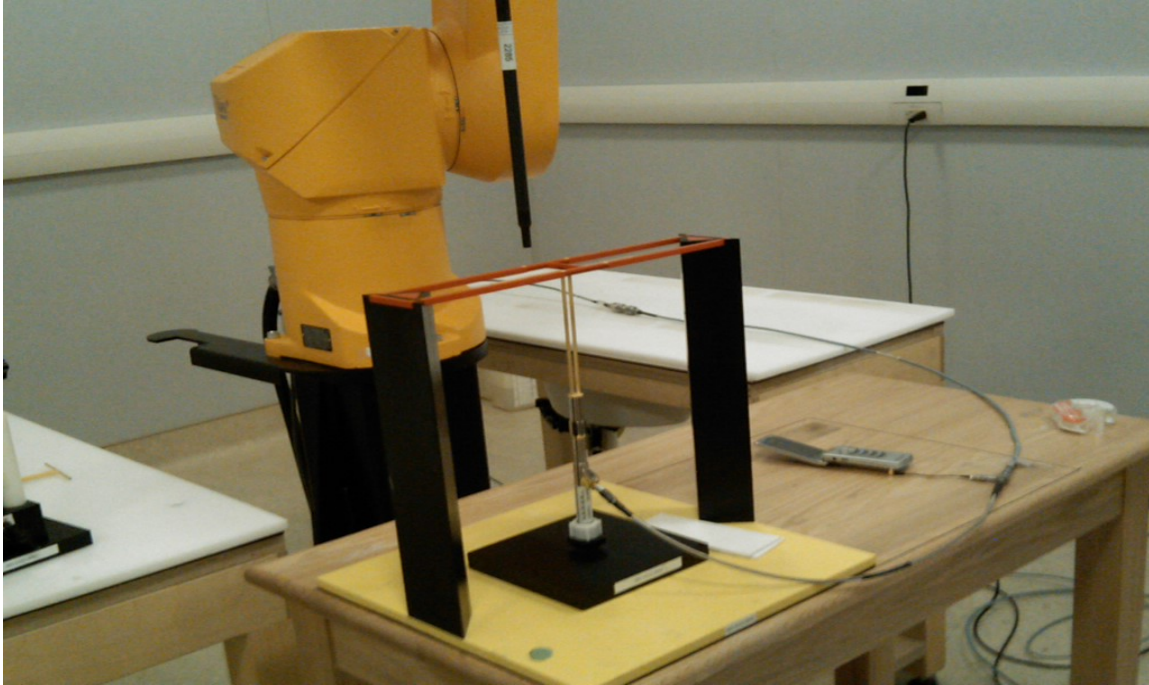
**Figure 1 - BlackBerry® Smartphone**

<b>RTS</b> RIM Testing Services	Document <b>Annex C to Hearing Aid Compatibility RF Emissions Test Report for the BlackBerry® Smartphone model RCE21CW</b>		Page <b>3(5)</b>
	Author Data <b>Daoud Attayi</b>	Dates of Test <b>Nov 18, Dec 09-10, 2008</b>	Report No <b>RTS-1364-0812-12</b>



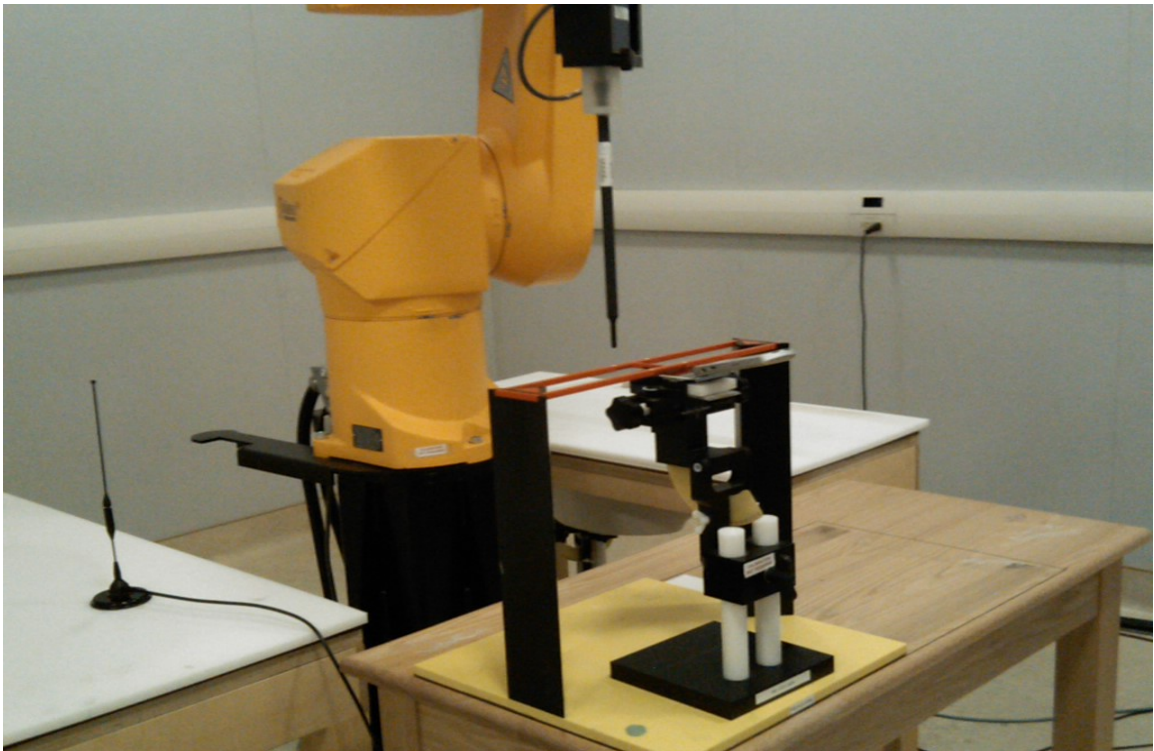
**Figure 2 – RF Ambient Noise measurement setup**

<b>RTS</b> RIM Testing Services	Document <b>Annex C to Hearing Aid Compatibility RF Emissions Test Report for the BlackBerry® Smartphone model RCE21CW</b>		Page <b>4(5)</b>
	Author Data <b>Daoud Attayi</b>	Dates of Test <b>Nov 18, Dec 09-10, 2008</b>	Report No <b>RTS-1364-0812-12</b>



**Figure 3 – Dipole Validation & Probe Modulation Factor measurement setup**

<b>RTS</b> RIM Testing Services	Document <b>Annex C to Hearing Aid Compatibility RF Emissions Test Report for the BlackBerry® Smartphone model RCE21CW</b>		Page <b>5(5)</b>
	Author Data <b>Daoud Attayi</b>	Dates of Test <b>Nov 18, Dec 09-10, 2008</b>	Report No <b>RTS-1364-0812-12</b>



**Figure 4 – HAC RF emissions test setup**