

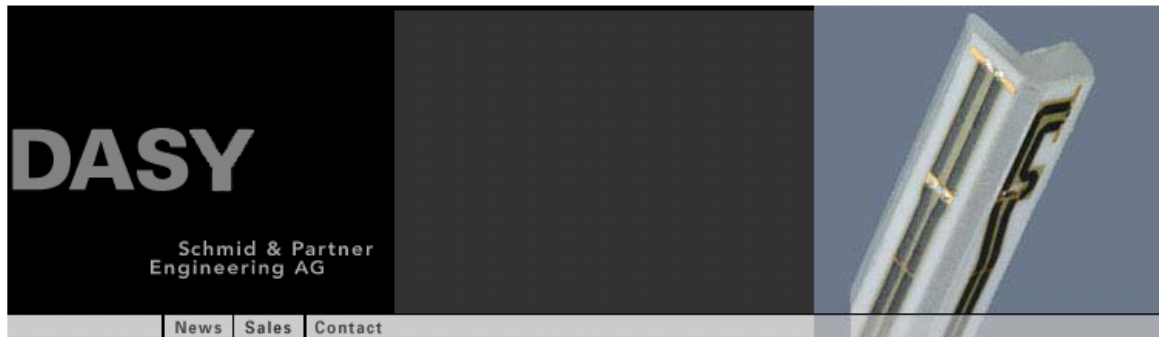
<b>RTS</b> RIM Testing Services	Document <b>Annex B to Hearing Aid Compatibility RF Emissions Test Report for the BlackBerry® Smartphone model RBJ41GW</b>		Page 1(35)
	Author Data <b>Daoud Attayi</b>	Dates of Test <b>June 01-05, 2007</b>	Report No <b>RTS-0510-0706-05</b>

## **Annex B: Probe and dipole descriptions and calibration certificates**

### **B.1 Probe and measurement chain descriptions and specifications**

<b>RTS</b> <b>RIM Testing Services</b>	Document <b>Annex B to Hearing Aid Compatibility RF Emissions Test Report for the BlackBerry® Smartphone model RBJ41GW</b>		Page 2(35)
	Author Data <b>Daoud Attayi</b>	Dates of Test <b>June 01-05, 2007</b>	Report No <b>RTS-0510-0706-05</b>

DASY Dosimetric Assessment System by Schmid & Partner Engineering AG



<b>Applications</b>
<b>Support &amp; Downloads</b>
<b>Products</b>
<ul style="list-style-type: none"> <li>▪ DASY4 Packages</li> <li>▪ EASY4</li> <li>▪ Probes <ul style="list-style-type: none"> <li>ET3DV6 - Isotropic Dos-Probe</li> <li>ES3DV3 - Isotropic Dos-Probe</li> <li>EX3DV4 - Isotropic Dos-Probe</li> <li>ET1DV3 - D-Probe</li> </ul> </li> <li> <ul style="list-style-type: none"> <li>EUV3 - Universal Vector E-Probe</li> <li>H3DV6 - Isotropic H-Probe</li> <li>HUV4 - Universal Vector H-Probe</li> <li>T1V3 - Temp-Probe</li> <li>DP1 - Dummy-Probe</li> </ul> </li> <li>▪ Data Acquisition System</li> <li>▪ Software</li> <li>▪ Phantoms</li> <li>▪ Robots</li> <li>▪ Validation Kits &amp; Calibration Dipoles</li> <li> <ul style="list-style-type: none"> <li>▪ Hearing Aid Compatibility (HAC) Ext</li> <li>▪ Tissue Simulating Liquids</li> </ul> </li> </ul>
<b>SPEAG Home</b>

### ER3DV6 ISOTROPIC E-FIELD PROBE FOR GENERAL NEAR-FIELD MEASUREMENTS

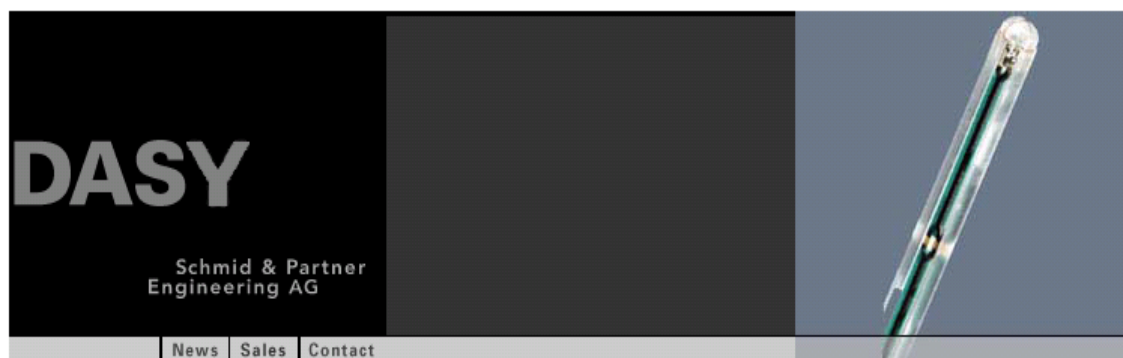
 [Download Product Flyer \(PDF, 192kB\)](#)

<b>Construction</b>	One dipole parallel, two dipoles normal to probe axis Built-in shielding against static charges PEEK enclosure material (resistant to organic solvents, e.g., glycoether)
<b>Calibration</b>	In air from 100 MHz to 3.0 GHz (absolute accuracy $\pm 6.0\%$ , $k=2$ )
<b>Frequency</b>	100 MHz to $> 6$ GHz; Linearity: $\pm 0.2$ dB (100 MHz to 3 GHz)
<b>Directivity</b>	$\pm 0.2$ dB in air (rotation around probe axis) $\pm 0.4$ dB in air (rotation normal to probe axis)
<b>Dynamic Range</b>	2 V/m to $> 1000$ V/m; Linearity: $\pm 0.2$ dB
<b>Dimensions</b>	Overall length: 330 mm (Tip: 16 mm) Tip diameter: 8 mm (Body: 12 mm) Distance from probe tip to dipole centers: 2.5 mm
<b>Application</b>	General near-field measurements up to 6 GHz Field component measurements Fast automatic scanning in phantoms

<http://www.dasy4.com/er3.htm>

<b>RTS</b> <b>RIM Testing Services</b>	Document <b>Annex B to Hearing Aid Compatibility RF Emissions Test Report for the BlackBerry® Smartphone model RBJ41GW</b>		Page 3(35)
	Author Data <b>Daoud Attayi</b>	Dates of Test <b>June 01-05, 2007</b>	Report No <b>RTS-0510-0706-05</b>

DASY Dosimetric Assessment System by Schmid & Partner Engineering AG



<b>Applications</b>
<b>Support &amp; Downloads</b>
<b>Products</b>
▪ DASY4 Packages
▪ EASY4
▪ Probes
ET3DV6 - Isotropic Dos-Probe
ES3DV3 - Isotropic Dos-Probe
EX3DV4 - Isotropic Dos-Probe
ET1DV3 - D-Probe
ER3DV6 - Isotropic E-Probe
EUV3 - Universal Vector E-Probe
HUV4 - Universal Vector H-Probe
T1V3 - Temp-Probe
DP1 - Dummy-Probe
▪ Data Acquisition System
▪ Software
▪ Phantoms
▪ Robots
▪ Validation Kits & Calibration Dipoles
▪ Hearing Aid Compatibility (HAC) Ext
▪ Tissue Simulating Liquids
<b>SPEAG Home</b>

### H3DV6 3-DIMENSIONAL H-FIELD PROBE FOR SMALL BAND APPLICATIONS

 [Download Product Flyer \(PDF, 192kB\)](#)

<b>Construction</b>	Three concentric loop sensors with 3.8 mm loop diameters Resistively loaded detector diodes for linear response Built-in shielding against static charges PEEK enclosure material (resistant to organic solvents, e.g., glycoether)
<b>Frequency</b>	200 MHz to 3 GHz (absolute accuracy $\pm 6.0\%$ , $k=2$ ); Output linearized
<b>Directivity</b>	$\pm 0.25$ dB (spherical isotropy error)
<b>Dynamic Range</b>	10 mA/m to 2 A/m at 1 GHz
<b>E-Field Interference</b>	< 10% at 3 GHz (for plane wave)
<b>Dimensions</b>	Overall length: 330 mm (Tip: 40 mm) Tip diameter: 6 mm (Body: 12 mm) Distance from probe tip to dipole centers: 3 mm
<b>Application</b>	General magnetic near-field measurements up to 3 GHz Field component measurements Surface current measurements Measurements in air or liquids Low interaction with the measured field

<http://www.dasy4.com/h3d.htm>

<b>RTS</b> <b>RIM Testing Services</b>	Document <b>Annex B to Hearing Aid Compatibility RF Emissions Test Report for the BlackBerry® Smartphone model RBJ41GW</b>		Page 4(35)
	Author Data <b>Daoud Attayi</b>	Dates of Test <b>June 01-05, 2007</b>	Report No <b>RTS-0510-0706-05</b>

All measurements were performed to the nearest element point as per the C63.19 standard. Offset distances were entered in the DASY4 software so that the measurement was to the nearest element.

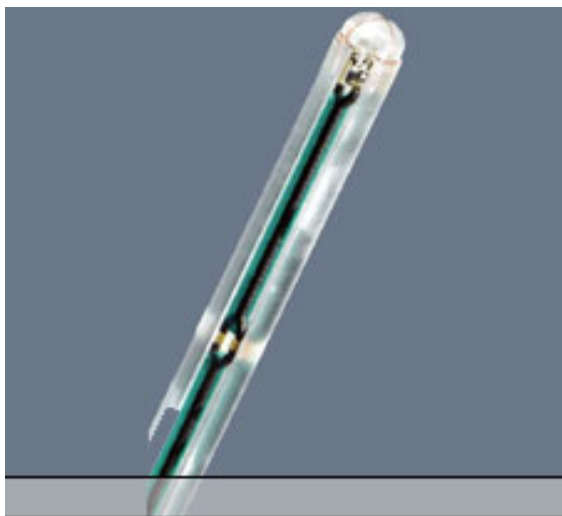
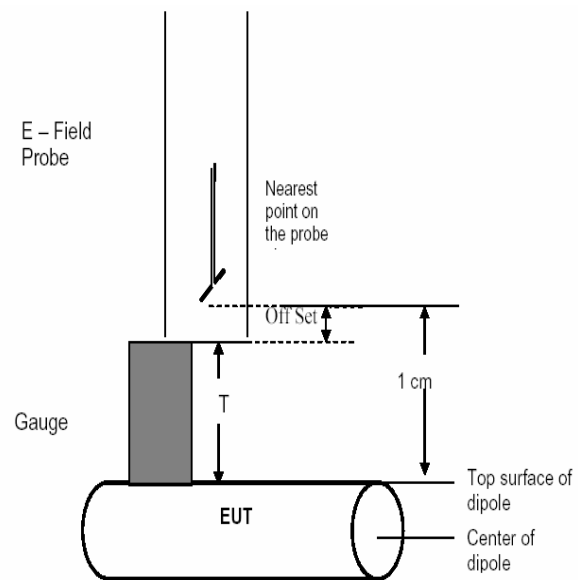
Figures 1 and 2, provided by the manufacturer, illustrate detail of the probe tip and its dimensions.

**ER3DV6 E-Field probe:** The distances from the probe tip to the closest points on the dipole sensors are 1.45mm for X and Y and 1.25mm for Z. From the probe tip to the center of the sensors is 2.5mm.

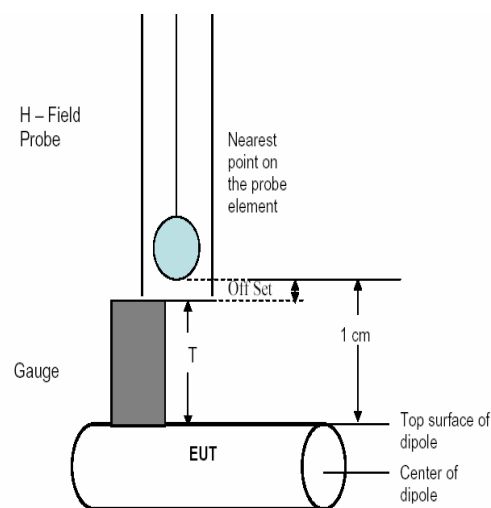
**H3DV6 H-Field probe:** The distance from the probe tip to the closest point of the X, Y and Z loop sensors is 1.1mm. From the probe tip to the center of the sensor is 3.00mm.



**E-Field Probe (ER3DV6)**



**H-Field Probe (H3DV6)**



<b>RTS</b> <b>RIM Testing Services</b>	Document <b>Annex B to Hearing Aid Compatibility RF Emissions Test Report for the BlackBerry® Smartphone model RBJ41GW</b>		Page 5(35)
	Author Data <b>Daoud Attayi</b>	Dates of Test <b>June 01-05, 2007</b>	Report No <b>RTS-0510-0706-05</b>

The following information is from the system manufacturer user manual describing the process chain:

The first step of the evaluation is a linearization of the filtered input signal to account for the compression characteristics of the detector diode. The compensation depends on the input signal, the diode type and the DC-transmission factor from the diode to the evaluation electronics. If the exciting field is pulsed, the crest factor of the signal must be known to correctly compensate for peak power. The formula for each channel can be given as:

$$V_i = U_i + U_i^2 \cdot \frac{cf}{dcp_i} \quad (20.1)$$

with  $V_i$  = compensated signal of channel i (i = x, y, z)  
 $U_i$  = input signal of channel i (i = x, y, z)  
 $cf$  = crest factor of exciting field (DASY parameter)  
 $dcp_i$  = diode compression point (DASY parameter)

From the compensated input signals the primary field data for each channel can be evaluated:

$$\text{E - fieldprobes : } E_i = \sqrt{\frac{V_i}{Norm_i \cdot ConvF}}$$

$$\text{H - fieldprobes : } H_i = \sqrt{V_i} \cdot \frac{a_{i0} + a_{i1}f + a_{i2}f^2}{f}$$

with  $V_i$  = compensated signal of channel i (i = x, y, z)  
 $Norm_i$  = sensor sensitivity of channel i (i = x, y, z)  
 $\mu\text{V}/(\text{V/m})^2$  for E-field Probes  
 $ConvF$  = sensitivity enhancement in solution  
 $a_{ij}$  = sensor sensitivity factors for H-field probes  
 $f$  = carrier frequency [GHz]  
 $E_i$  = electric field strength of channel i in V/m  
 $H_i$  = magnetic field strength of channel i in A/m

The RSS value of the field components gives the total field strength (Hermitian magnitude):

$$E_{tot} = \sqrt{E_x^2 + E_y^2 + E_z^2} \quad (20.2)$$

The measurement / integration time per point is > 500 ms, as per the system manufacturer:

The time response of the field probes has been assessed by exposing the probe to a well-controlled field producing signals larger than HAC E- and H-fields of class M4. The signal response time is evaluated as the time required by the system to reach 90% of the expected final value after an on/off switch of the power source with an integration time of 500 ms and a probe response time of <5 ms. In the current implementation, DASY4 waits longer than 100 ms after having reached the grid point before starting a measurement, i.e., the response time uncertainty is negligible.

If the device under test does not emit a CW signal, the integration time applied to measure the electric field at a specific point may introduce additional uncertainties due to the discretization. The tolerances for the different systems had the worst-case of 2.6%.

<b>RTS</b> <b>RIM Testing Services</b>	Document <b>Annex B to Hearing Aid Compatibility RF Emissions Test Report for the BlackBerry® Smartphone model RBJ41GW</b>		Page 6(35)
Author Data <b>Daoud Attayi</b>	Dates of Test <b>June 01-05, 2007</b>	Report No <b>RTS-0510-0706-05</b>	FCC ID <b>L6ARBJ40GW</b>

## B.2 Probe and dipole calibration certificates

<b>RTS</b> RIM Testing Services	Document	Annex B to Hearing Aid Compatibility RF Emissions Test Report for the BlackBerry® Smartphone model RBJ41GW		Page
	Author Data	Dates of Test	Report No	FCC ID
Daoud Attayi	June 01-05, 2007	RTS-0510-0706-05	L6ARBJ40GW	7(35)

Calibration Laboratory of  
Schmid & Partner  
Engineering AG  
Zeughausstrasse 43, 8004 Zurich, Switzerland



S Schweizerischer Kalibrierdienst  
C Service suisse d'étalonnage  
S Servizio svizzero di taratura  
S Swiss Calibration Service

Accredited by the Swiss Federal Office of Metrology and Accreditation  
The Swiss Accreditation Service is one of the signatories to the EA  
Multilateral Agreement for the recognition of calibration certificates

Accreditation No.: SCS 108

Client **RIM** Certificate No: ER3-2286\_Jan07

### CALIBRATION CERTIFICATE

Object: ER3DV6 - SN:2286

Calibration procedure(s): QA CAL-02.v4  
Calibration procedure for E-field probes optimized for close near field evaluations in air

Calibration date: January 10, 2007

Condition of the calibrated item: In Tolerance

This calibration certificate documents the traceability to national standards, which realize the physical units of measurements (SI).  
The measurements and the uncertainties with confidence probability are given on the following pages and are part of the certificate.

All calibrations have been conducted in the closed laboratory facility: environment temperature (22 ± 3)°C and humidity < 70%.

Calibration Equipment used (M&PE critical for calibration)

Primary Standards	ID #	Cal Date (Calibrated by, Certificate No.)	Scheduled Calibration
Power meter E4419B	GB41293874	5-Apr-06 (METAS, No. 251-00557)	Apr-07
Power sensor E4412A	MY41495277	5-Apr-06 (METAS, No. 251-00557)	Apr-07
Power sensor E4412A	MY41498087	5-Apr-06 (METAS, No. 251-00557)	Apr-07
Reference 3 dB Attenuator	SN: S5054 (3c)	10-Aug-06 (METAS, No. 217-00592)	Aug-07
Reference 20 dB Attenuator	SN: S5086 (20b)	4-Apr-06 (METAS, No. 251-00558)	Apr-07
Reference 30 dB Attenuator	SN: S5129 (30b)	10-Aug-06 (METAS, No. 217-00593)	Aug-07
Reference Probe ER3DV6	SN: 2328	2-Oct-06 (SPEAG, No. ER3-2328_Oct06)	Oct-07
DAE4	SN: 654	21-Jun-06 (SPEAG, No. DAE4-654_Jun06)	Jun-07
Secondary Standards	ID #	Check Date (in house)	Scheduled Check
RF generator HP 8648C	US3642U01700	4-Aug-99 (SPEAG, in house check Nov-05)	In house check: Nov-07
Network Analyzer HP 8753E	US37390585	18-Oct-01 (SPEAG, in house check Oct-06)	In house check: Oct-07

Calibrated by: **Katja Pokovic** Technical Manager

Approved by: **Nils Kuster** Quality Manager

Signature: *[Handwritten signatures]*

Issued: January 10, 2007

This calibration certificate shall not be reproduced except in full without written approval of the laboratory.

<b>RTS</b> RIM Testing Services	Document <b>Annex B to Hearing Aid Compatibility RF Emissions Test Report for the BlackBerry® Smartphone model RBJ41GW</b>		Page 8(35)
	Author Data <b>Daoud Attayi</b>	Dates of Test <b>June 01-05, 2007</b>	Report No <b>RTS-0510-0706-05</b>

**Calibration Laboratory of Schmid & Partner Engineering AG**  
Zeughausstrasse 43, 8004 Zurich, Switzerland



**S** Schweizerischer Kalibrierdienst  
**C** Service suisse d'étalonnage  
**S** Servizio svizzero di taratura  
**S** Swiss Calibration Service

Accredited by the Swiss Federal Office of Metrology and Accreditation  
The Swiss Accreditation Service is one of the signatories to the EA  
Multilateral Agreement for the recognition of calibration certificates

Accreditation No.: **SCS 108**

**Glossary:**

**NORM<sub>x,y,z</sub>** sensitivity in free space  
**DCP** diode compression point  
**Polarization  $\phi$**   $\phi$  rotation around probe axis  
**Polarization  $\vartheta$**   $\vartheta$  rotation around an axis that is in the plane normal to probe axis (at measurement center), i.e.,  $\vartheta = 0$  is normal to probe axis  
**Connector Angle** information used in DASY system to align probe sensor X to the robot coordinate system

**Calibration is Performed According to the Following Standards:**

- a) IEEE Std 1309-1996, "IEEE Standard for calibration of electromagnetic field sensors and probes, excluding antennas, from 9 kHz to 40 GHz", 1996.

**Methods Applied and Interpretation of Parameters:**

- **NORM<sub>x,y,z</sub>**: Assessed for E-field polarization  $\vartheta = 0$  for XY sensors and  $\vartheta = 90$  for Z sensor ( $f \leq 900$  MHz in TEM-cell;  $f > 1800$  MHz: R22 waveguide).
- **NORM(f)<sub>x,y,z</sub>** = NORM<sub>x,y,z</sub> \* frequency\_response (see Frequency Response Chart).
- **DCP<sub>x,y,z</sub>**: DCP are numerical linearization parameters assessed based on the data of power sweep (no uncertainty required). DCP does not depend on frequency.
- **Spherical isotropy (3D deviation from isotropy)**: in a locally homogeneous field realized using an open waveguide setup.
- **Sensor Offset**: The sensor offset corresponds to the offset of virtual measurement center from the probe tip (on probe axis). No tolerance required.
- **Connector Angle**: The angle is assessed using the information gained by determining the NORM<sub>x</sub> (no uncertainty required).



<b>RTS</b> RIM Testing Services	Document <b>Annex B to Hearing Aid Compatibility RF Emissions Test Report for the BlackBerry® Smartphone model RBJ41GW</b>		Page 9(35)
	Author Data <b>Daoud Attayi</b>	Dates of Test <b>June 01-05, 2007</b>	Report No <b>RTS-0510-0706-05</b>

ER3DV6 SN:2286

January 10, 2007

# Probe ER3DV6

## SN:2286

Manufactured:	September 19, 2002
Last calibrated:	January 16, 2006
Recalibrated:	January 10, 2007

Calibrated for DASY Systems

(Note: non-compatible with DASY2 system!)

<b>RTS</b> RIM Testing Services	Document <b>Annex B to Hearing Aid Compatibility RF Emissions Test Report for the BlackBerry® Smartphone model RBJ41GW</b>		Page 10(35)
	Author Data <b>Daoud Attayi</b>	Dates of Test <b>June 01-05, 2007</b>	Report No <b>RTS-0510-0706-05</b>

ER3DV6 SN:2286

January 10, 2007

**DASY - Parameters of Probe: ER3DV6 SN:2286**

Sensitivity in Free Space [ $\mu\text{V}/(\text{V}/\text{m})^2$ ]		Diode Compression <sup>A</sup>	
NormX	2.17 ± 10.1 % (k=2)	DCP X	94 mV
NormY	1.44 ± 10.1 % (k=2)	DCP Y	94 mV
NormZ	1.55 ± 10.1 % (k=2)	DCP Z	95 mV

Frequency Correction

X	0.0
Y	0.0
Z	0.0

Sensor Offset (Probe Tip to Sensor Center)

X	2.5 mm
Y	2.5 mm
Z	2.5 mm

Connector Angle -9 °

The reported uncertainty of measurement is stated as the standard uncertainty of measurement multiplied by the coverage factor k=2, which for a normal distribution corresponds to a coverage probability of approximately 95%.

<sup>A</sup> numerical linearization parameter; uncertainty not required

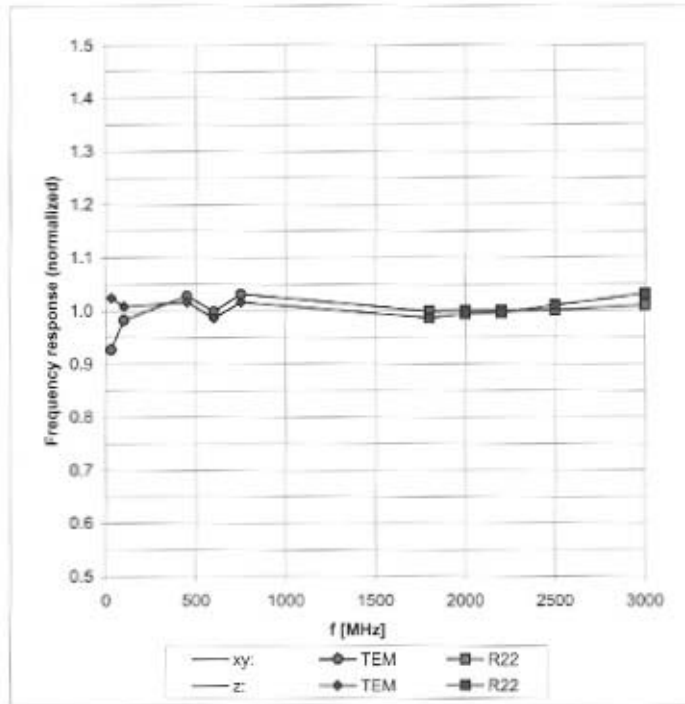
<b>RTS</b> RIM Testing Services	Document <b>Annex B to Hearing Aid Compatibility RF Emissions Test Report for the BlackBerry® Smartphone model RBJ41GW</b>		Page 11(35)
	Author Data <b>Daoud Attayi</b>	Dates of Test <b>June 01-05, 2007</b>	Report No <b>RTS-0510-0706-05</b>

ER3DV6 SN:2286

January 10, 2007

### Frequency Response of E-Field

(TEM-Cell:ifi110 EXX, Waveguide R22)



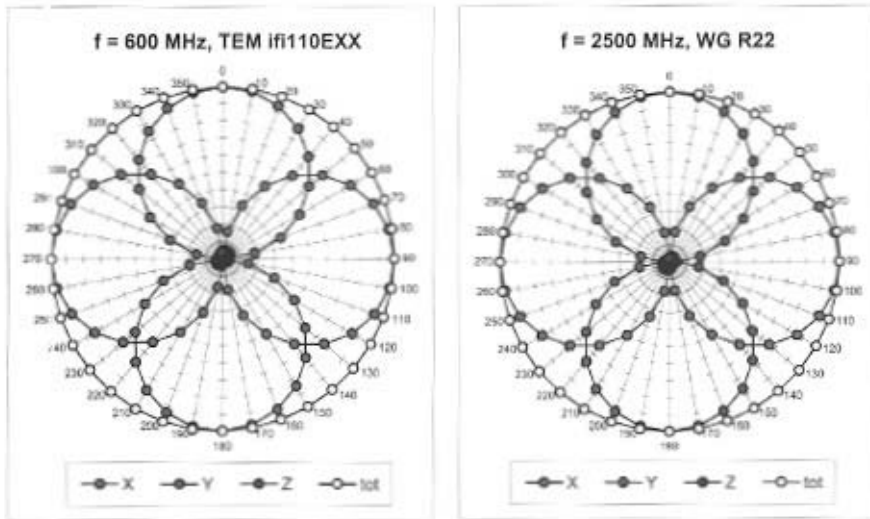
Uncertainty of Frequency Response of E-field:  $\pm 6.3\%$  (k=2)

<b>RTS</b> RIM Testing Services	Document <b>Annex B to Hearing Aid Compatibility RF Emissions Test Report for the BlackBerry® Smartphone model RBJ41GW</b>		Page 12(35)
	Author Data <b>Daoud Attayi</b>	Dates of Test <b>June 01-05, 2007</b>	Report No <b>RTS-0510-0706-05</b>

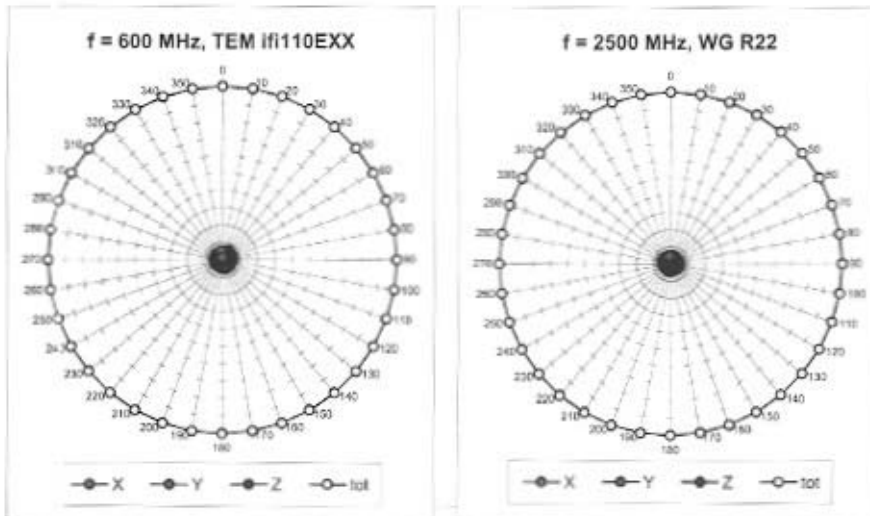
ER3DV6 SN:2286

January 10, 2007

**Receiving Pattern ( $\phi$ ),  $\vartheta = 0^\circ$**



**Receiving Pattern ( $\phi$ ),  $\vartheta = 90^\circ$**

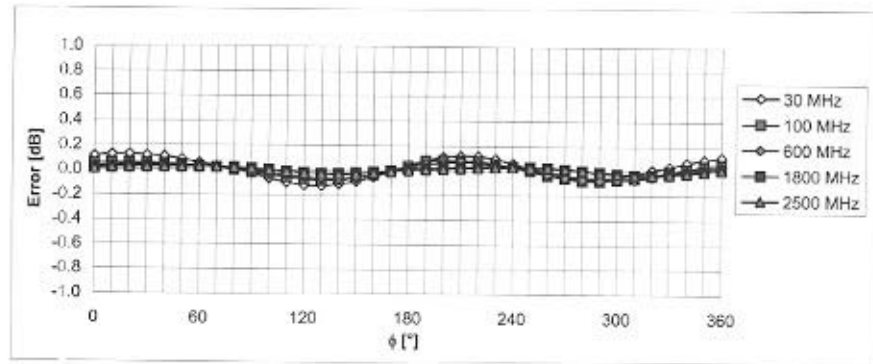


<b>RTS</b> RIM Testing Services	Document <b>Annex B to Hearing Aid Compatibility RF Emissions Test Report for the BlackBerry® Smartphone model RBJ41GW</b>		Page 13(35)
	Author Data <b>Daoud Attayi</b>	Dates of Test <b>June 01-05, 2007</b>	Report No <b>RTS-0510-0706-05</b>

ER3DV6 SN:2286

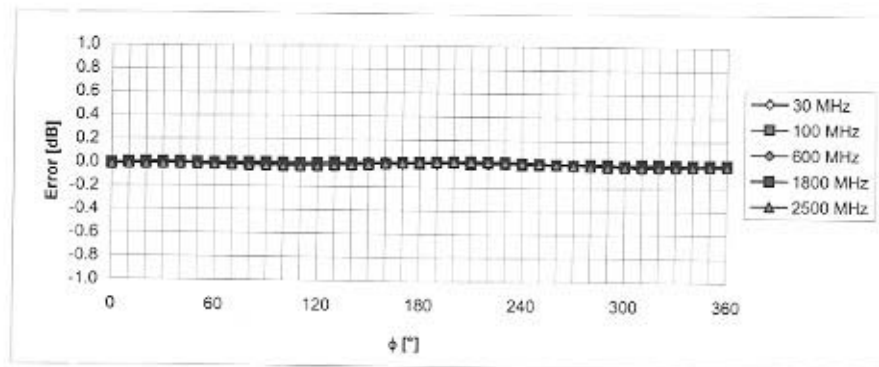
January 10, 2007

### Receiving Pattern ( $\phi$ ), $\vartheta = 0^\circ$



Uncertainty of Axial Isotropy Assessment:  $\pm 0.5\%$  ( $k=2$ )

### Receiving Pattern ( $\phi$ ), $\vartheta = 90^\circ$



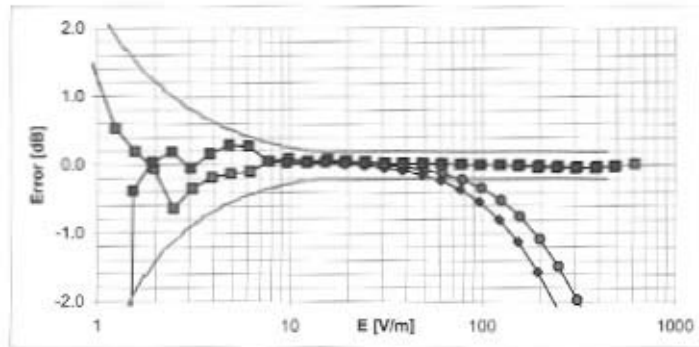
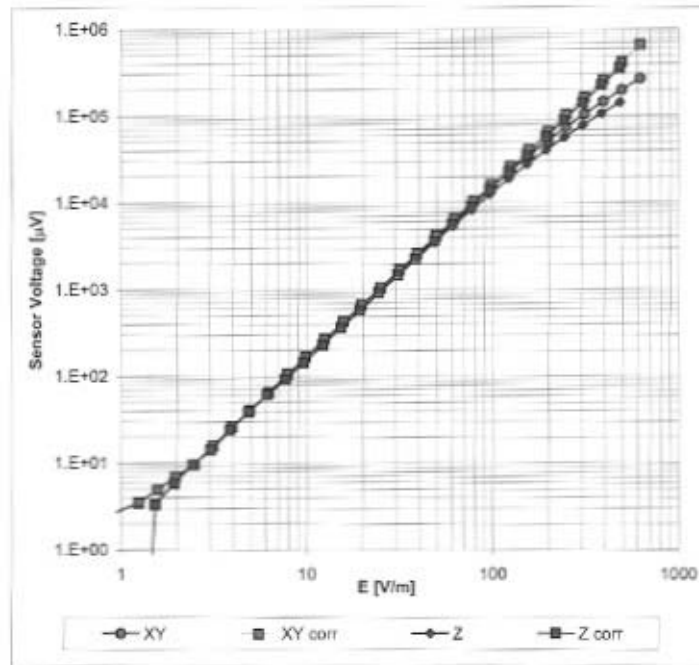
Uncertainty of Axial Isotropy Assessment:  $\pm 0.5\%$  ( $k=2$ )

<b>RTS</b> RIM Testing Services	Document <b>Annex B to Hearing Aid Compatibility RF Emissions Test Report for the BlackBerry® Smartphone model RBJ41GW</b>		Page 14(35)
	Author Data <b>Daoud Attayi</b>	Dates of Test <b>June 01-05, 2007</b>	Report No <b>RTS-0510-0706-05</b>

ER3DV6 SN:2286

January 10, 2007

### Dynamic Range f(E-field) (Waveguide R22, f = 1800 MHz)



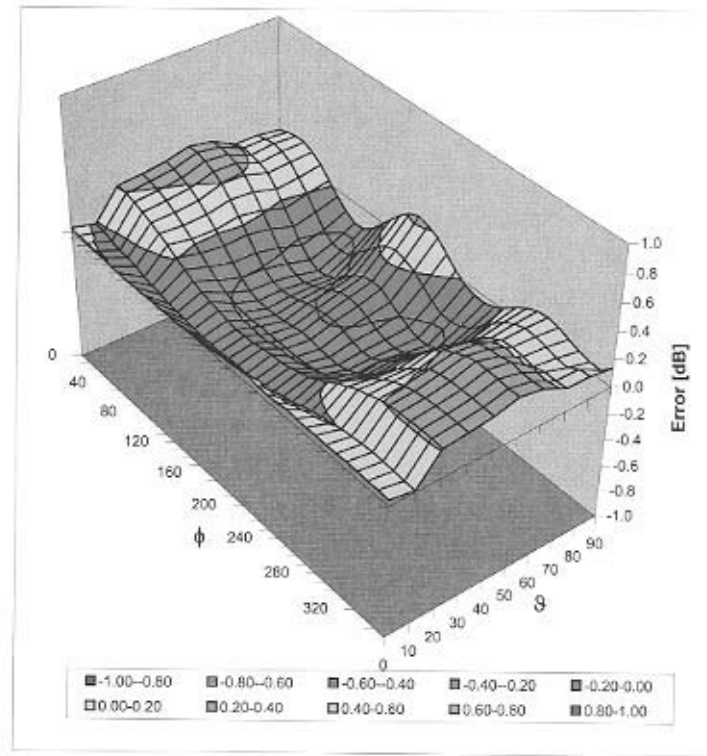
Uncertainty of Linearity Assessment:  $\pm 0.6\%$  (k=2)

<b>RTS</b> RIM Testing Services	Document <b>Annex B to Hearing Aid Compatibility RF Emissions Test Report for the BlackBerry® Smartphone model RBJ41GW</b>		Page 15(35)
	Author Data <b>Daoud Attayi</b>	Dates of Test <b>June 01-05, 2007</b>	Report No <b>RTS-0510-0706-05</b>

ER3DV6 SN:2286

January 10, 2007

### Deviation from Isotropy in Air Error ( $\phi, \vartheta$ ), $f = 900$ MHz



Uncertainty of Spherical Isotropy Assessment:  $\pm 2.6\%$  ( $k=2$ )

<b>RTS</b> RIM Testing Services	Document <b>Annex B to Hearing Aid Compatibility RF Emissions Test Report for the BlackBerry® Smartphone model RBJ41GW</b>		Page 16(35)
	Author Data <b>Daoud Attayi</b>	Dates of Test <b>June 01-05, 2007</b>	Report No <b>RTS-0510-0706-05</b>
		FCC ID <b>L6ARB40GW</b>	

Calibration Laboratory of  
Schmid & Partner  
Engineering AG  
Zeughausstrasse 43, 8004 Zurich, Switzerland



S Schweizerischer Kalibrierdienst  
C Service suisse d'étalonnage  
S Servizio svizzero di taratura  
S Swiss Calibration Service

Accredited by the Swiss Federal Office of Metrology and Accreditation  
The Swiss Accreditation Service is one of the signatories to the EA  
Multilateral Agreement for the recognition of calibration certificates

Accreditation No.: **SCS 108**

Client **RIM**

Certificate No: **H3-6105\_Nov06**

### CALIBRATION CERTIFICATE

Object: **H3DV6 - SN:6105**

Calibration procedure(s): **QA CAL-03.v4  
Calibration procedure for H-field probes optimized for close near field evaluations in air**

Calibration date: **November 15, 2006**

Condition of the calibrated item: **In Tolerance**

This calibration certificate documents the traceability to national standards, which realize the physical units of measurements (SI).  
The measurements and the uncertainties with confidence probability are given on the following pages and are part of the certificate.

All calibrations have been conducted in the closed laboratory facility: environment temperature (22 ± 3)°C and humidity < 70%.

Calibration Equipment used (M&TE critical for calibration)

Primary Standards	ID #	Cal Date (Calibrated by, Certificate No.)	Scheduled Calibration
Power meter E4419B	GB41293874	5-Apr-06 (METAS, No. 251-00557)	Apr-07
Power sensor E4412A	MY41495277	5-Apr-06 (METAS, No. 251-00557)	Apr-07
Power sensor E4412A	MY41498007	5-Apr-06 (METAS, No. 251-00557)	Apr-07
Reference 3 dB Attenuator	SN: S5054 (3c)	10-Aug-06 (METAS, No. 217-00592)	Aug-07
Reference 20 dB Attenuator	SN: S5086 (20b)	4-Apr-06 (METAS, No. 251-00558)	Apr-07
Reference 30 dB Attenuator	SN: S5129 (30b)	10-Aug-06 (METAS, No. 217-00593)	Aug-07
Reference Probe H3DV6	SN: 6182	2-Oct-06 (SPEAG, No. H3-6182_Oct06)	Oct-07
DAE4	SN: 654	21-Jun-06 (SPEAG, No. DAE4-654_Jun06)	Jun-07
Secondary Standards	ID #	Check Date (in house)	Scheduled Check
RF generator HP 8648C	US3642U01700	4-Aug-89 (SPEAG, in house check Nov-05)	In house check: Nov-07
Network Analyzer HP 8753E	US37390585	18-Oct-01 (SPEAG, in house check Oct-06)	In house check: Oct-07

Calibrated by: **Katja Pokovic** (Name), **Technical Manager** (Function), *[Signature]* (Signature)

Approved by: **Niels Kuster** (Name), **Quality Manager** (Function), *[Signature]* (Signature)

Issued: November 15, 2006

This calibration certificate shall not be reproduced except in full without written approval of the laboratory.



<b>RTS</b> <b>RIM Testing Services</b>	Document <b>Annex B to Hearing Aid Compatibility RF Emissions Test Report for the BlackBerry® Smartphone model RBJ41GW</b>		Page 17(35)
	Author Data <b>Daoud Attayi</b>	Dates of Test <b>June 01-05, 2007</b>	Report No <b>RTS-0510-0706-05</b>

**Calibration Laboratory of**  
**Schmid & Partner**  
**Engineering AG**  
 Zeughausstrasse 43, 8004 Zurich, Switzerland



**S** Schweizerischer Kalibrierdienst  
**C** Service suisse d'étalonnage  
**S** Servizio svizzero di taratura  
**S** Swiss Calibration Service

Accredited by the Swiss Federal Office of Metrology and Accreditation  
 The Swiss Accreditation Service is one of the signatories to the EA  
 Multilateral Agreement for the recognition of calibration certificates

Accreditation No.: **SCS 108**

**Glossary:**

NORM<sub>x,y,z</sub> sensitivity in free space  
 DCP diode compression point  
 Polarization  $\phi$   $\phi$  rotation around probe axis  
 Polarization  $\vartheta$   $\vartheta$  rotation around an axis that is in the plane normal to probe axis (at measurement center), i.e.,  $\vartheta = 0$  is normal to probe axis  
 Connector Angle information used in DASY system to align probe sensor X to the robot coordinate system

**Calibration is Performed According to the Following Standards:**

- a) IEEE Std 1309-1996, "IEEE Standard for calibration of electromagnetic field sensors and probes, excluding antennas, from 9 kHz to 40 GHz", 1996.

**Methods Applied and Interpretation of Parameters:**

- $X, Y, Z_{a0a1a2}$ : Assessed for E-field polarization  $\vartheta = 90$  for XY sensors and  $\vartheta = 0$  for Z sensor ( $f \leq 900$  MHz in TEM-cell;  $f > 1800$  MHz: R22 waveguide).
- $X, Y, Z(f)_{a0a1a2} = X, Y, Z_{a0a1a2} \cdot \text{frequency\_response}$  (see Frequency Response Chart).
- $DCP_{x,y,z}$ : DCP are numerical linearization parameters assessed based on the data of power sweep (no uncertainty required). DCP does not depend on frequency.
- *Spherical isotropy (3D deviation from isotropy)*: in a locally homogeneous field realized using an open waveguide setup.
- *Sensor Offset*: The sensor offset corresponds to the offset of virtual measurement center from the probe tip (on probe axis). No tolerance required.
- *Connector Angle*: The angle is assessed using the information gained by determining the  $X_{a0a1a2}$  (no uncertainty required).

<b>RTS</b> RIM Testing Services	Document <b>Annex B to Hearing Aid Compatibility RF Emissions Test Report for the BlackBerry® Smartphone model RBJ41GW</b>		Page 18(35)
	Author Data <b>Daoud Attayi</b>	Dates of Test <b>June 01-05, 2007</b>	Report No <b>RTS-0510-0706-05</b>

H3DV6 SN:6105

November 15, 2006

# Probe H3DV6

## SN:6105

Manufactured: January 4, 2002  
Last calibrated: November 11, 2005  
Recalibrated: November 15, 2006

Calibrated for DASY Systems

(Note: non-compatible with DASY2 system!)

<b>RTS</b> RIM Testing Services	Document <b>Annex B to Hearing Aid Compatibility RF Emissions Test Report for the BlackBerry® Smartphone model RBJ41GW</b>		Page 19(35)
	Author Data <b>Daoud Attayi</b>	Dates of Test <b>June 01-05, 2007</b>	Report No <b>RTS-0510-0706-05</b>

H3DV6 SN:6105

November 15, 2006

### DASY - Parameters of Probe: H3DV6 SN:6105

Sensitivity in Free Space [A/m /  $\sqrt{(\mu V)}$ ]

	a0	a1	a2
X	2.869E-03	9.376E-5	-2.557E-5 ± 5.1 % (k=2)
Y	2.559E-03	1.609E-4	-2.972E-5 ± 5.1 % (k=2)
Z	2.930E-03	1.211E-6	-1.970E-5 ± 5.1 % (k=2)

#### Diode Compression<sup>1</sup>

DCP X	87 mV
DCP Y	87 mV
DCP Z	87 mV

#### Sensor Offset

(Probe Tip to Sensor Center)

X	3.0 mm
Y	3.0 mm
Z	3.0 mm

#### Connector Angle

-89 °

The reported uncertainty of measurement is stated as the standard uncertainty of measurement multiplied by the coverage factor k=2, which for a normal distribution corresponds to a coverage probability of approximately 95%.

<sup>1</sup> numerical linearization parameter; uncertainty not required

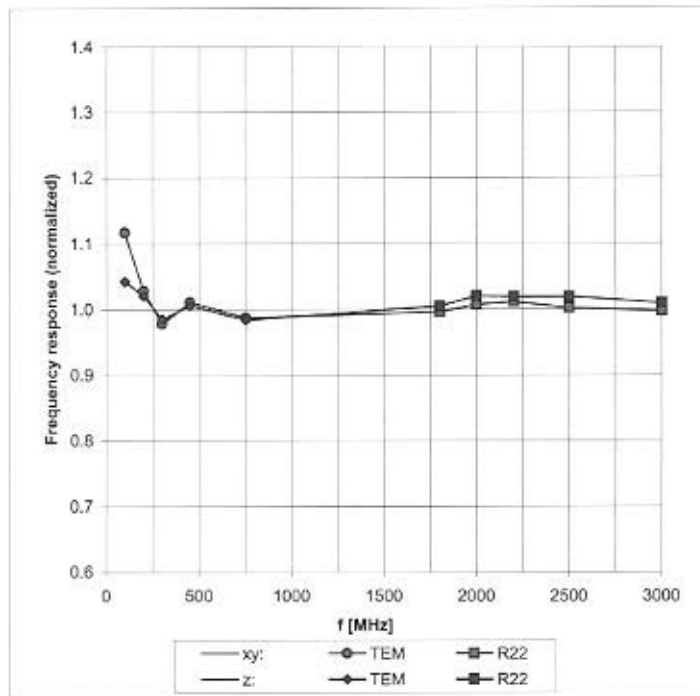
<b>RTS</b> RIM Testing Services	Document <b>Annex B to Hearing Aid Compatibility RF Emissions Test Report for the BlackBerry® Smartphone model RBJ41GW</b>		Page 20(35)
	Author Data <b>Daoud Attayi</b>	Dates of Test <b>June 01-05, 2007</b>	Report No <b>RTS-0510-0706-05</b>

H3DV6 SN:6105

November 15, 2006

### Frequency Response of H-Field

(TEM-Cell:ifi110, Waveguide R22)



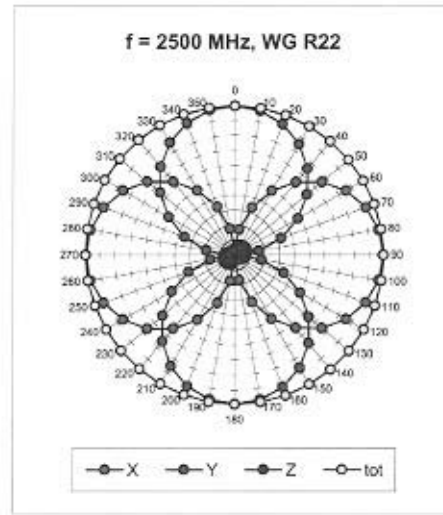
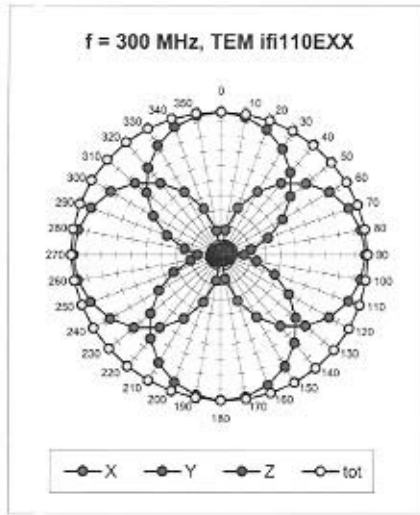
Uncertainty of Frequency Response of E-field:  $\pm 6.3\%$  (k=2)

<b>RTS</b> RIM Testing Services	Document <b>Annex B to Hearing Aid Compatibility RF Emissions Test Report for the BlackBerry® Smartphone model RBJ41GW</b>		Page 21(35)
	Author Data <b>Daoud Attayi</b>	Dates of Test <b>June 01-05, 2007</b>	Report No <b>RTS-0510-0706-05</b>

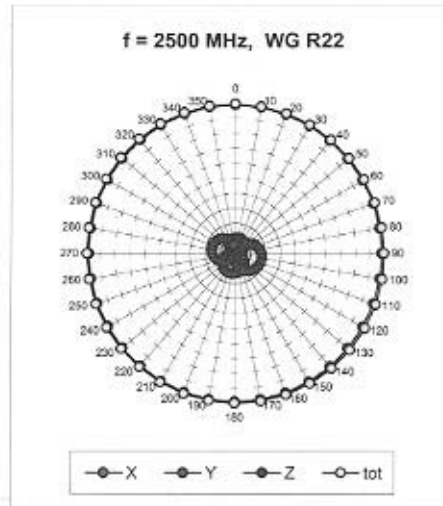
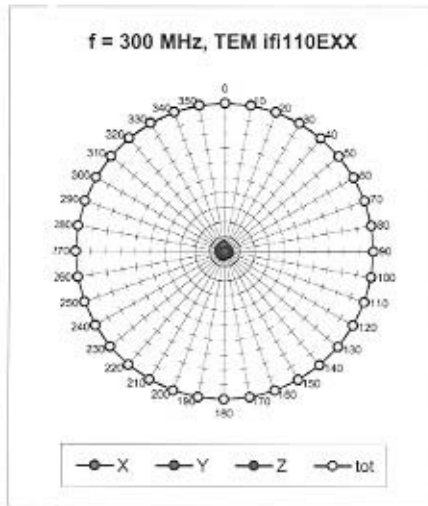
H3DV6 SN:6105

November 15, 2006

**Receiving Pattern ( $\phi$ ),  $\vartheta = 90^\circ$**



**Receiving Pattern ( $\phi$ ),  $\vartheta = 0^\circ$**

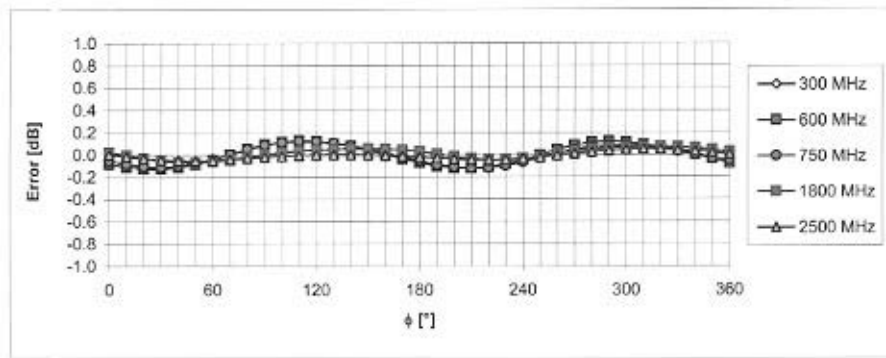


<b>RTS</b> RIM Testing Services	Document <b>Annex B to Hearing Aid Compatibility RF Emissions Test Report for the BlackBerry® Smartphone model RBJ41GW</b>		Page 22(35)
	Author Data <b>Daoud Attayi</b>	Dates of Test <b>June 01-05, 2007</b>	Report No <b>RTS-0510-0706-05</b>

H3DV6 SN:6105

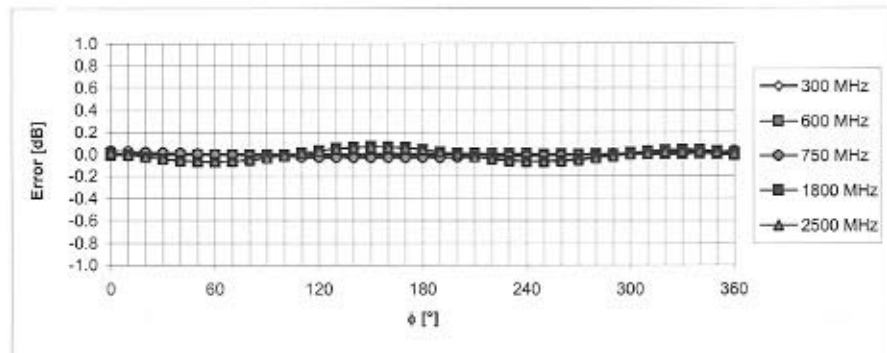
November 15, 2006

### Receiving Pattern ( $\phi$ ), $\theta = 90^\circ$



Uncertainty of Axial Isotropy Assessment:  $\pm 0.5\%$  (k=2)

### Receiving Pattern ( $\phi$ ), $\theta = 0^\circ$



Uncertainty of Axial Isotropy Assessment:  $\pm 0.5\%$  (k=2)

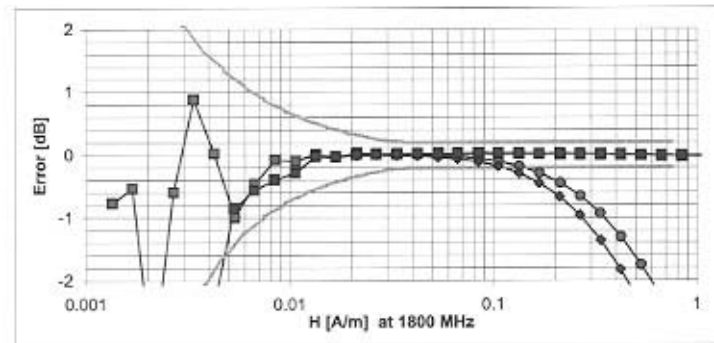
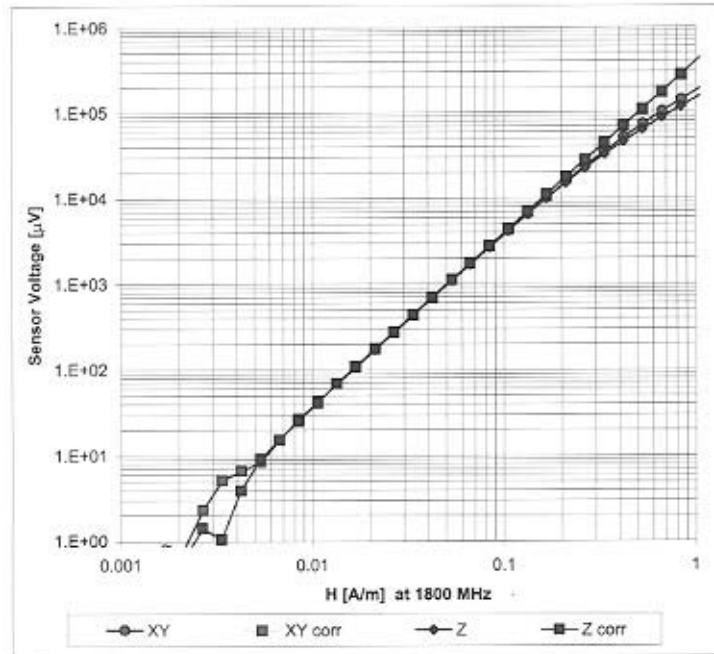
<b>RTS</b> RIM Testing Services	Document <b>Annex B to Hearing Aid Compatibility RF Emissions Test Report for the BlackBerry® Smartphone model RBJ41GW</b>		Page 23(35)
	Author Data <b>Daoud Attayi</b>	Dates of Test <b>June 01-05, 2007</b>	Report No <b>RTS-0510-0706-05</b>

H3DV6 SN:6105

November 15, 2006

### Dynamic Range f(H-field)

(Waveguide R22, f = 1800 MHz)



Uncertainty of Linearity Assessment:  $\pm 0.6\%$  (k=2)

<b>RTS</b> RIM Testing Services	Document <b>Annex B to Hearing Aid Compatibility RF Emissions Test Report for the BlackBerry® Smartphone model RBJ41GW</b>		Page 24(35)
	Author Data <b>Daoud Attayi</b>	Dates of Test <b>June 01-05, 2007</b>	Report No <b>RTS-0510-0706-05</b>

**Calibration Laboratory of Schmid & Partner Engineering AG**  
 Zeughausstrasse 43, 8004 Zurich, Switzerland



**S** Schweizerischer Kalibrierdienst  
**S** Service suisse d'étalonnage  
**C** Servizio svizzero di taratura  
**S** Swiss Calibration Service

Accredited by the Swiss Federal Office of Metrology and Accreditation  
 The Swiss Accreditation Service is one of the signatories to the EA  
 Multilateral Agreement for the recognition of calibration certificates

Accreditation No.: **SCS 108**

Client **RIM**

Certificate No: **CD835V3-1011\_Dec05**

### CALIBRATION CERTIFICATE

Object: **CD835V3 - SN: 1011**  
 Calibration procedure(s): **QA CAL-20.v4  
 Calibration procedure for dipoles in air**  
 Calibration date: **December 5, 2005**  
 Condition of the calibrated item: **In Tolerance**

This calibration certificate documents the traceability to national standards, which realize the physical units of measurements (SI).  
 All calibrations have been conducted at an environment temperature (22 ± 3)°C and humidity < 70%.

Calibration Equipment used (M&TE critical for calibration)

Primary Standards	ID #	Cal Date (Calibrated by, Certificate No.)	Scheduled Calibration
Power meter EPM-442A	GB37480704	04-Oct-05 (METAS, No. 251-00516)	Oct-06
Power sensor HP 8481A	US37292783	04-Oct-05 (METAS, No. 251-00516)	Oct-06
Reference 20 dB Attenuator	SN: 5086 (20g)	11-Aug-05 (METAS, No 251-00498)	Aug-06
Reference 10 dB Attenuator	SN: 5047.2 (10r)	11-Aug-05 (METAS, No 251-00498)	Aug-06

Secondary Standards	ID #	Check Date (in house)	Scheduled Check
Power meter EPM-4419B	GB43310788	12-Aug-03 (SPEAG, in house check Oct-05)	In house check: Oct-06
Power sensor HP 8481A	MY41093312	10-Aug-03 (SPEAG, in house check Oct-05)	In house check: Oct-07
Power sensor HP 8481A	MY41093315	10-Aug-03 (SPEAG, in house check Oct-05)	In house check: Oct-06
Network Analyzer HP 8753E	US37390585	18-Oct-01 (SPEAG, in house check Nov-05)	In house check: Nov-06
RF generator R&S SMT06	100005	26-Jul-04 (SPEAG, in house check Nov-05)	In house check: Nov-07
DAE4	SN: 660	16-Dec-04 (SPEAG, No. DAE4-901_Dec04)	Calibration, Dec-05
Probe ER3DV6	SN: 2336	20-Jan-05 (SPEAG, No. ER3-2336_Jan05)	Calibration, Jan-06
Probe H3DV6	SN: 6065	10-Dec-04 (SPEAG, No. H3-6065-Dec04)	Calibration, Dec-05

Calibrated by: **Mike Meili** (Name), **Laboratory Technician** (Function), *M. Meili* (Signature)  
 Approved by: **Fin Bomholt** (Name), **Technical Director** (Function), *F. Bomholt* (Signature)

Issued: December 15, 2005

This calibration certificate is issued as an intermediate solution until the specific calibration procedure is accepted in the frame of the accreditation of the Calibration Laboratory of Schmid & Partner Engineering AG (based on ISO/IEC 17025 International Standard)



<b>RTS</b> RIM Testing Services	Document <b>Annex B to Hearing Aid Compatibility RF Emissions Test Report for the BlackBerry® Smartphone model RBJ41GW</b>		Page 25(35)
	Author Data <b>Daoud Attayi</b>	Dates of Test <b>June 01-05, 2007</b>	Report No <b>RTS-0510-0706-05</b>

**Calibration Laboratory of  
Schmid & Partner  
Engineering AG**  
Zaughausstrasse 43, 8004 Zurich, Switzerland



**S** Schweizerischer Kalibrierdienst  
**C** Service suisse d'étalonnage  
**S** Servizio svizzero di taratura  
**S** Swiss Calibration Service

Accredited by the Swiss Federal Office of Metrology and Accreditation  
The Swiss Accreditation Service is one of the signatories to the EA  
Multilateral Agreement for the recognition of calibration certificates

Accreditation No.: **SCS 108**

**References**

- [1] ANSI-PC63.19-2001 (Draft 3.x, 2005)  
American National Standard for Methods of Measurement of Compatibility between Wireless Communications Devices and Hearing Aids.

**Methods Applied and Interpretation of Parameters:**

- Coordinate System:** y-axis is in the direction of the dipole arms. z-axis is from the basis of the antenna (mounted on the table) towards its feed point between the two dipole arms. x-axis is normal to the other axes. In coincidence with standard [1], the measurement planes (probe sensor center) are selected to be at a distance of 10 mm above the top edge of the dipole arms.
- Measurement Conditions:** Further details are available from the hardcopies at the end of the certificate. All figures stated in the certificate are valid at the frequency indicated. The forward power to the dipole connector is set with a calibrated power meter connected and monitored with an auxiliary power meter connected to a directional coupler. While the dipole under test is connected, the forward power is adjusted to the same level.
- Antenna Positioning:** The dipole is mounted on a HAC Test Arch phantom using the matching dipole positioner with the arms horizontal and the feeding cable coming from the floor. The measurements are performed in a shielded room with absorbers around the setup to reduce the reflections. It is verified before the mounting of the dipole under the Test Arch phantom, that its arms are perfectly in a line. It is installed on the HAC dipole positioner with its arms parallel below the dielectric reference wire and able to move elastically in vertical direction without changing its relative position to the top center of the Test Arch phantom. The vertical distance to the probe is adjusted after dipole mounting with a DASY4 Surface Check job. Before the measurement, the distance between phantom surface and probe tip is verified. The proper measurement distance is selected by choosing the matching section of the HAC Test Arch phantom with the proper device reference point (upper surface of the dipole) and the matching grid reference point (tip of the probe) considering the probe sensor offset. The vertical distance to the probe is essential for the accuracy.
- Feed Point Impedance and Return Loss:** These parameters are measured using a HP 8753E Vector Network Analyzer. The impedance is specified at the SMA connector of the dipole. The influence of reflections was eliminating by applying the averaging function while moving the dipole in the air, at least 70cm away from any obstacles.
- E-field distribution:** E field is measured in the x-y-plane with an isotropic ER3D-field probe with 100 mW forward power to the antenna feed point. In accordance with [1], the scan area is 20mm wide, its length exceeds the dipole arm length (180 or 90mm). The sensor center is 10 mm (in z) above the top of the dipole arms. Two 3D maxima are available near the end of the dipole arms. Assuming the dipole arms are perfectly in one line, the average of these two maxima (in subgrid 2 and subgrid 8) is determined to compensate for any non-parallelity to the measurement plane as well as the sensor displacement. The E-field value stated as calibration value represents the maximum of the interpolated 3D-E-field, 10mm above the dipole surface.
- H-field distribution:** H-field is measured with an isotropic H-field probe with 100mW forward power to the antenna feed point, in the x-y-plane. The scan area and sensor distance is equivalent to the E-field scan. The maximum of the field is available at the center (subgrid 5) above the feed point. The H-field value stated as calibration value represents the maximum of the interpolated H-field, 10mm above the dipole surface at the feed point.

<b>RTS</b> RIM Testing Services	Document <b>Annex B to Hearing Aid Compatibility RF Emissions Test Report for the BlackBerry® Smartphone model RBJ41GW</b>		Page 26(35)
	Author Data <b>Daoud Attayi</b>	Dates of Test <b>June 01-05, 2007</b>	Report No <b>RTS-0510-0706-05</b>

### 1 Measurement Conditions

DASY system configuration, as far as not given on page 1.

<b>DASY Version</b>	DASY4	V4.6 B23
<b>DASY PP Version</b>	SEMCAD	V1.8 B160
<b>Phantom</b>	HAC Test Arch	SD HAC P01 BA, #1002
<b>Distance Dipole Top - Probe Center</b>	10 mm	
<b>Scan resolution</b>	dx, dy = 5 mm	area = 20 x 180 mm
<b>Frequency</b>	835 MHz ± 1 MHz	
<b>Forward power at dipole connector</b>	20.0 dBm = 100mW	
<b>Input power drift</b>	< 0.05 dB	

### 2 Maximum Field values

H-field 10 mm above dipole surface	condition	interpolated maximum
Maximum measured	100 mW forward power	0.446 A/m

Uncertainty for H-field measurement: 8.2% (k=2)

E-field 10 mm above dipole surface	condition	Interpolated maximum
Maximum measured above high end	100 mW forward power	162.2 V/m
Maximum measured above low end	100 mW forward power	161.0 V/m
Averaged maximum above arm	100 mW forward power	161.6 V/m

Uncertainty for E-field measurement: 12.8% (k=2)

### 3 Appendix

#### 3.1 Antenna Parameters

Frequency	Return Loss	Impedance
800 MHz	16.1 dB	( 40.2 - j10.4 ) Ohm
835 MHz	26.7 dB	( 53.4 + j3.4 ) Ohm
900 MHz	16.5 dB	( 48.9 - j15.0 ) Ohm
950 MHz	19.7 dB	( 47.5 + j9.8 ) Ohm
960 MHz	16.1 dB	( 57.0 + j15.5 ) Ohm

#### 3.2 Antenna Design and Handling

The calibration dipole has a symmetric geometry with a built-in two stub matching network, which leads to the enhanced bandwidth.

The dipole is built of standard semirigid coaxial cable. The internal matching line is open ended. The antenna is therefore open for DC signals.

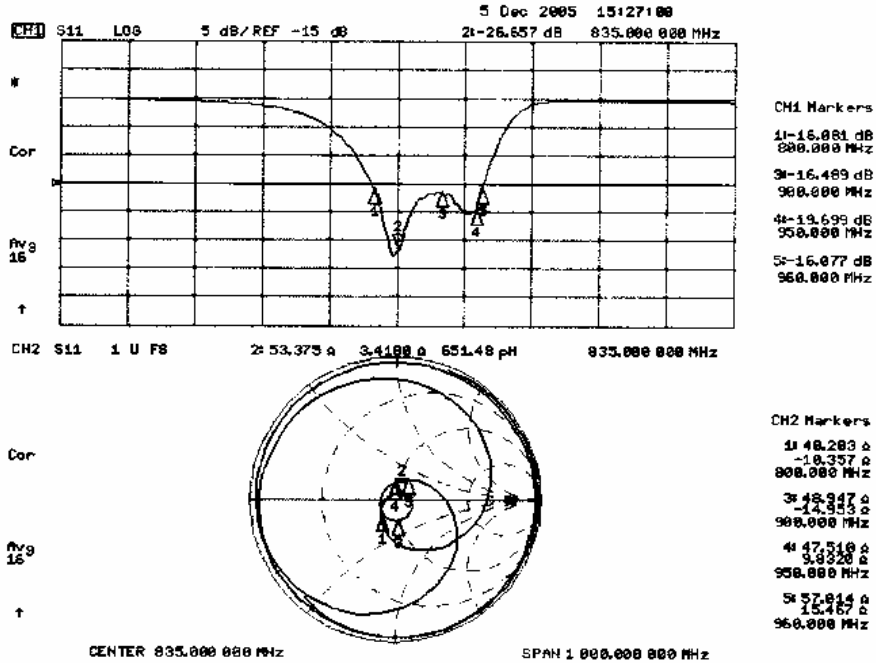
Do not apply force to dipole arms, as they are liable to bend. The soldered connections near the feedpoint may be damaged. After excessive mechanical stress or overheating, check the impedance characteristics to ensure that the internal matching network is not affected.

After long term use with 40W radiated power, only a slight warming of the dipole near the feedpoint can be measured.

<b>RTS</b> RIM Testing Services	Document <b>Annex B to Hearing Aid Compatibility RF Emissions Test Report for the BlackBerry® Smartphone model RBJ41GW</b>		Page 27(35)
	Author Data <b>Daoud Attayi</b>	Dates of Test <b>June 01-05, 2007</b>	Report No <b>RTS-0510-0706-05</b>

### 3.3 Measurement Sheets

#### 3.3.1 Return Loss and Smith Chart



<b>RTS</b> <b>RIM Testing Services</b>	Document <b>Annex B to Hearing Aid Compatibility RF Emissions Test Report for the BlackBerry® Smartphone model RBJ41GW</b>		Page 28(35)
	Author Data <b>Daoud Attayi</b>	Dates of Test <b>June 01-05, 2007</b>	Report No <b>RTS-0510-0706-05</b>

### 3.3.2 DASY4 H-field result

Date/Time: 12/5/2005 3:57:25 PM

Test Laboratory: SPEAG, Zurich, Switzerland

DUT: HAC-Dipole 835 MHz; Type: D835V3; Serial: 1011

Communication System: CW; Frequency: 835 MHz; Duty Cycle: 1:1

Medium: Air

Medium parameters used:  $\sigma = 0$  mho/m,  $\epsilon_r = 1$ ;  $\rho = 1$  kg/m<sup>3</sup>

Phantom section: H Dipole Section

DASY4 Configuration:

- Probe: H3DV6 - SN6065; Calibrated: 12/10/2004
- Sensor-Surface: (Fix Surface)
- Electronics: DAE4 Sn660; Calibrated: 12/16/2004
- Phantom: HAC Test Arch; Type: SD HAC P01 BA; Serial: 1002
- Measurement SW: DASY4, V4.6 Build 23; Postprocessing SW: SEMCAD, V1.8 Build 160

H Scan 10mm above CD 835 MHz/Hearing Aid Compatibility Test (41x361x1):

Measurement grid: dx=5mm, dy=5mm

Maximum value of peak Total field = 0.446 A/m

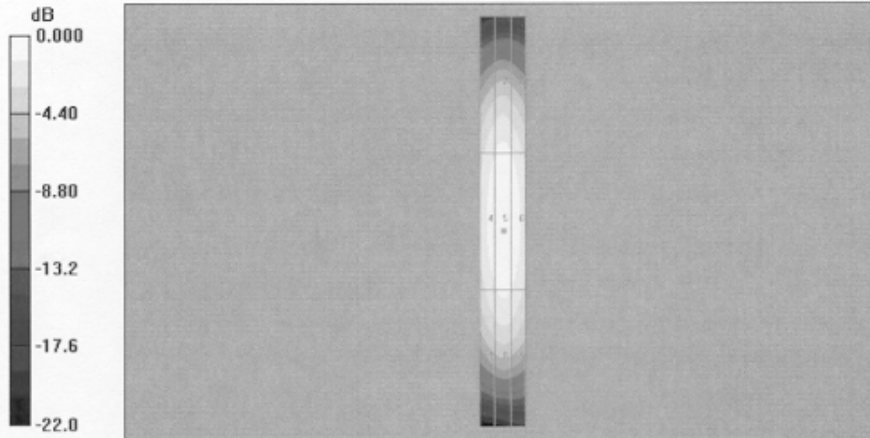
Probe Modulation Factor = 1.00

Reference Value = 0.474 A/m; Power Drift = 0.012 dB

Hearing Aid Near-Field Category: M2 (AWF 0 dB)

Peak H-field in A/m

Grid 1	Grid 2	Grid 3
0.376	0.398	0.379
Grid 4	Grid 5	Grid 6
0.419	0.446	0.428
Grid 7	Grid 8	Grid 9
0.365	0.391	0.376



0 dB = 0.446A/m

<b>RTS</b> <b>RIM Testing Services</b>	Document <b>Annex B to Hearing Aid Compatibility RF Emissions Test Report for the BlackBerry® Smartphone model RBJ41GW</b>		Page 29(35)
	Author Data <b>Daoud Attayi</b>	Dates of Test <b>June 01-05, 2007</b>	Report No <b>RTS-0510-0706-05</b>

### 3.3.3 DASY4 E-Field result

Date/Time: 12/5/2005 12:21:35 PM

Test Laboratory: SPEAG, Zurich, Switzerland

DUT: HAC-Dipole 835 MHz; Type: D835V3; Serial: 1011

Communication System: CW; Frequency: 835 MHz; Duty Cycle: 1:1

Medium: Air

Medium parameters used:  $\sigma = 0$  mho/m,  $\epsilon_r = 1$ ;  $\rho = 1000$  kg/m<sup>3</sup>

Phantom section: E Dipole Section

DASY4 Configuration:

- Probe: ER3DV6 - SN2336; ConvF(1, 1, 1); Calibrated: 1/20/2005
- Sensor-Surface: (Fix Surface)
- Electronics: DAE4 Sn660; Calibrated: 12/16/2004
- Phantom: HAC Test Arch; Type: SD HAC P01 BA; Serial: 1002
- Measurement SW: DASY4, V4.6 Build 23; Postprocessing SW: SEMCAD, V1.8 Build 160

E Scan 10mm above CD 835 MHz/Hearing Aid Compatibility Test (41x361x1):

Measurement grid: dx=5mm, dy=5mm

Maximum value of peak Total field = 162.2 V/m

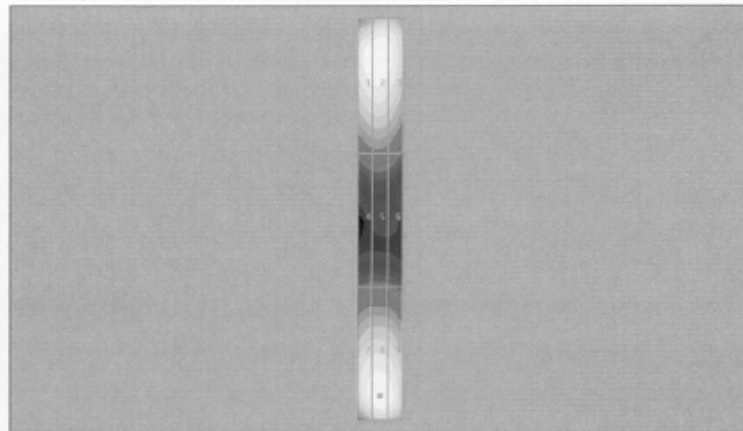
Probe Modulation Factor = 1.00

Reference Value = 105.0 V/m; Power Drift = -0.027 dB

Hearing Aid Near-Field Category: M2 (AWF 0 dB)

Peak E-field in V/m

Grid 1	Grid 2	Grid 3
159.9	162.2	154.4
Grid 4	Grid 5	Grid 6
87.1	88.4	84.5
Grid 7	Grid 8	Grid 9
155.0	161.0	156.5



0 dB = 162.2V/m

<b>RTS</b> RIM Testing Services	Document <b>Annex B to Hearing Aid Compatibility RF Emissions Test Report for the BlackBerry® Smartphone model RBJ41GW</b>		Page 30(35)
	Author Data <b>Daoud Attayi</b>	Dates of Test <b>June 01-05, 2007</b>	Report No <b>RTS-0510-0706-05</b>

**Calibration Laboratory of**  
Schmid & Partner  
Engineering AG  
Zeughausstrasse 43, 8004 Zurich, Switzerland



**S** Schweizerischer Kalibrierdienst  
**S** Service suisse d'étalonnage  
**C** Servizio svizzero di taratura  
**S** Swiss Calibration Service

Accredited by the Swiss Federal Office of Metrology and Accreditation  
The Swiss Accreditation Service is one of the signatories to the EA  
Multilateral Agreement for the recognition of calibration certificates

Accreditation No.: **SCS 108**

Client **RIM**

Certificate No: **CD1880V3-1008\_Dec05**

### CALIBRATION CERTIFICATE

Object **CD1880V3 - SN: 1008**  
  
Calibration procedure(s) **QA CAL-20.v4  
Calibration procedure for dipoles in air**  
  
Calibration date: **December 6, 2005**  
  
Condition of the calibrated item **In Tolerance**

This calibration certificate documents the traceability to national standards, which realize the physical units of measurements (SI).  
The measurements and the uncertainties with confidence probability are given on the following pages and are part of the certificate.

All calibrations have been conducted in the closed laboratory facility: environment temperature (22 ± 3)°C and humidity < 70%.

Calibration Equipment used (M&TE critical for calibration)

Primary Standards	ID #	Cal Date (Calibrated by, Certificate No.)	Scheduled Calibration
Power meter EPM-442A	GB37480704	04-Oct-05 (METAS, No. 251-00516)	Oct-06
Power sensor HP 8481A	US37292783	04-Oct-05 (METAS, No. 251-00516)	Oct-06
20 dB Attenuator	SN: 5086 (20g)	11-Aug-05 (METAS, No 251-00498)	Aug-06
10 dB Attenuator	SN: 5047.2 (10r)	11-Aug-05 (METAS, No 251-00498)	Aug-06

Secondary Standards	ID #	Check Date (in house)	Scheduled Check
Power meter EPM-4419B	GB43310788	12-Aug-03 (SPEAG, in house check Oct-05)	In house check: Oct-06
Power sensor HP 8481A	MY41093312	10-Aug-03 (SPEAG, in house check Oct-05)	In house check: Oct-07
Power sensor HP 8481A	MY41093315	10-Aug-03 (SPEAG, in house check Oct-05)	In house check: Oct-06
Network Analyzer HP 8753E	US37390585	18-Oct-01 (SPEAG, in house check Nov-05)	In house check: Nov-06
RF generator R&S SMT06	100005	26-Jul-04 (SPEAG, in house check Nov-05)	In house check: Nov-07
DAE4	SN: 660	16-Dec-04 (SPEAG, No. DAE4-660_Dec04)	Calibration, Dec-05
Probe ER3DV6	SN: 2336	20-Jan-05 (SPEAG, No. ER3-2336_Jan05)	Calibration, Jan-06
Probe H3DV6	SN: 6065	10-Dec-04 (SPEAG, No. H3-6065-Dec04)	Calibration, Dec-05

Calibrated by: **Name: Mike Meili, Function: Laboratory Technician, Signature: M. Meili**

Approved by: **Name: Fin Bornholt, Function: Technical Director, Signature: F. Bornholt**

Issued: December 15, 2005

This calibration certificate shall not be reproduced except in full without written approval of the laboratory.

<b>RTS</b> RIM Testing Services	Document <b>Annex B to Hearing Aid Compatibility RF Emissions Test Report for the BlackBerry® Smartphone model RBJ41GW</b>		Page 31(35)
	Author Data <b>Daoud Attayi</b>	Dates of Test <b>June 01-05, 2007</b>	Report No <b>RTS-0510-0706-05</b>

**Calibration Laboratory of Schmid & Partner Engineering AG**  
Zeughausstrasse 43, 8004 Zurich, Switzerland



**S** Schweizerischer Kalibrierdienst  
**S** Service suisse d'étalonnage  
**C** Servizio svizzero di taratura  
**S** Swiss Calibration Service

Accredited by the Swiss Federal Office of Metrology and Accreditation  
The Swiss Accreditation Service is one of the signatories to the EA  
Multilateral Agreement for the recognition of calibration certificates

Accreditation No.: **SCS 108**

**References**

- [1] ANSI-PC63.19-2001 (Draft 3.x, 2005)  
American National Standard for Methods of Measurement of Compatibility between Wireless Communications Devices and Hearing Aids.

**Methods Applied and Interpretation of Parameters:**

- **Coordinate System:** y-axis is in the direction of the dipole arms. z-axis is from the basis of the antenna (mounted on the table) towards its feed point between the two dipole arms. x-axis is normal to the other axes. In coincidence with standard [1], the measurement planes (probe sensor center) are selected to be at a distance of 10 mm above the top edge of the dipole arms.
- **Measurement Conditions:** Further details are available from the hardcopies at the end of the certificate. All figures stated in the certificate are valid at the frequency indicated. The forward power to the dipole connector is set with a calibrated power meter connected and monitored with an auxiliary power meter connected to a directional coupler. While the dipole under test is connected, the forward power is adjusted to the same level.
- **Antenna Positioning:** The dipole is mounted on a HAC Test Arch phantom using the matching dipole positioner with the arms horizontal and the feeding cable coming from the floor. The measurements are performed in a shielded room with absorbers around the setup to reduce the reflections. It is verified before the mounting of the dipole under the Test Arch phantom, that its arms are perfectly in a line. It is installed on the HAC dipole positioner with its arms parallel below the dielectric reference wire and able to move elastically in vertical direction without changing its relative position to the top center of the Test Arch phantom. The vertical distance to the probe is adjusted after dipole mounting with a DASY4 Surface Check job. Before the measurement, the distance between phantom surface and probe tip is verified. The proper measurement distance is selected by choosing the matching section of the HAC Test Arch phantom with the proper device reference point (upper surface of the dipole) and the matching grid reference point (tip of the probe) considering the probe sensor offset. The vertical distance to the probe is essential for the accuracy.
- **Feed Point Impedance and Return Loss:** These parameters are measured using a HP 8753E Vector Network Analyzer. The impedance is specified at the SMA connector of the dipole. The influence of reflections was eliminated by applying the averaging function while moving the dipole in the air, at least 70cm away from any obstacles.
- **E-field distribution:** E field is measured in the x-y-plane with an isotropic ER3D-field probe with 100 mW forward power to the antenna feed point. In accordance with [1], the scan area is 20mm wide, its length exceeds the dipole arm length (180 or 90mm). The sensor center is 10 mm (in z) above the top of the dipole arms. Two 3D maxima are available near the end of the dipole arms. Assuming the dipole arms are perfectly in one line, the average of these two maxima (in subgrid 2 and subgrid 8) is determined to compensate for any non-parallelity to the measurement plane as well as the sensor displacement. The E-field value stated as calibration value represents the maximum of the interpolated 3D-E-field, 10mm above the dipole surface.
- **H-field distribution:** H-field is measured with an isotropic H-field probe with 100mW forward power to the antenna feed point, in the x-y-plane. The scan area and sensor distance is equivalent to the E-field scan. The maximum of the field is available at the center (subgrid 5) above the feed point. The H-field value stated as calibration value represents the maximum of the interpolated H-field, 10mm above the dipole surface at the feed point.

<b>RTS</b> RIM Testing Services	Document <b>Annex B to Hearing Aid Compatibility RF Emissions Test Report for the BlackBerry® Smartphone model RBJ41GW</b>		Page 32(35)
	Author Data <b>Daoud Attayi</b>	Dates of Test <b>June 01-05, 2007</b>	Report No <b>RTS-0510-0706-05</b>

### 1 Measurement Conditions

DASY system configuration, as far as not given on page 1.

DASY Version	DASY4	V4.6 B23
DASY PP Version	SEMCAD	V1.8 B160
Phantom	HAC Test Arch	SD HAC P01 BA, #1002
Distance Dipole Top - Probe Center	10 mm	
Scan resolution	dx, dy = 5 mm	area = 20 x 90 mm
Frequency	1880 MHz ± 1 MHz	
Forward power at dipole connector	20.0 dBm = 100mW	
Input power drift	< 0.05 dB	

### 2 Maximum Field values

H-field 10 mm above dipole surface	condition	interpolated maximum
Maximum measured	100 mW forward power	<b>0.454 A/m</b>

Uncertainty for H-field measurement: 8.2% (k=2)

E-field 10 mm above dipole surface	condition	Interpolated maximum
Maximum measured above high end	100 mW forward power	132.9 V/m
Maximum measured above low end	100 mW forward power	131.8 V/m
Averaged maximum above arm	100 mW forward power	<b>132.4 V/m</b>

Uncertainty for E-field measurement: 12.8% (k=2)

### 3 Appendix

#### 3.1 Antenna Parameters

Frequency	Return Loss	Impedance
1710 MHz	22.7 dB	( 56.4 + j4.5 ) Ohm
1880 MHz	20.1 dB	( 58.4 + j6.6 ) Ohm
1900 MHz	20.9 dB	( 58.6 + j4.6 ) Ohm
1950 MHz	27.7 dB	( 54.3 - j0.4 ) Ohm
2000 MHz	18.7 dB	( 52.1 + j11.7 ) Ohm

#### 3.2 Antenna Design and Handling

The calibration dipole has a symmetric geometry with a built-in two stub matching network, which leads to the enhanced bandwidth.

The dipole is built of standard semirigid coaxial cable. The internal matching line is open ended. The antenna is therefore open for DC signals.

Do not apply force to dipole arms, as they are liable to bend. The soldered connections near the feedpoint may be damaged. After excessive mechanical stress or overheating, check the impedance characteristics to ensure that the internal matching network is not affected.

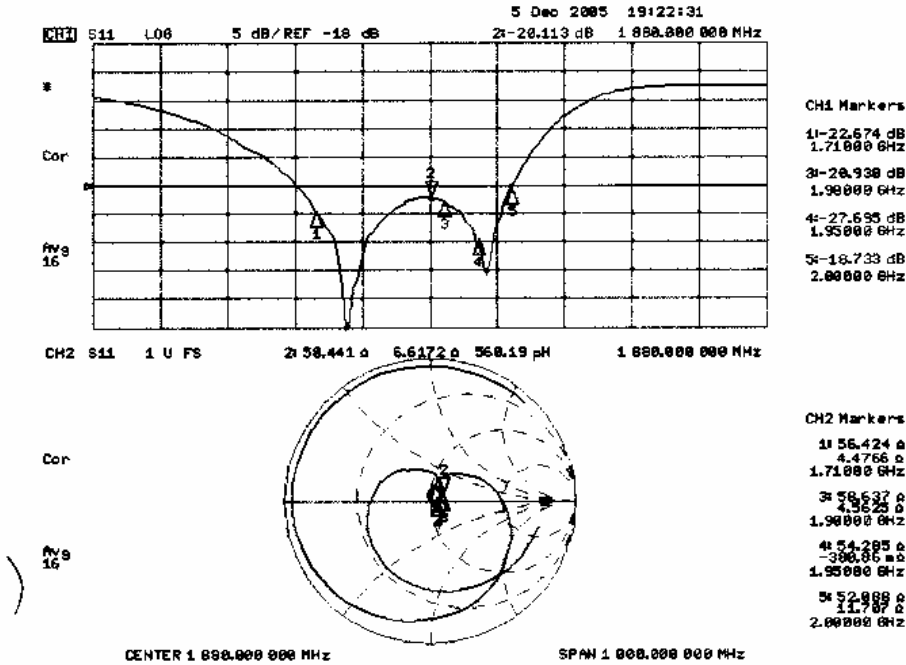
After long term use with 40W radiated power, only a slight warming of the dipole near the feedpoint can be measured.



<b>RTS</b> RIM Testing Services	Document <b>Annex B to Hearing Aid Compatibility RF Emissions Test Report for the BlackBerry® Smartphone model RBJ41GW</b>		Page 33(35)
	Author Data <b>Daoud Attayi</b>	Dates of Test <b>June 01-05, 2007</b>	Report No <b>RTS-0510-0706-05</b>

### 3.3 Measurement Sheets

#### 3.3.1 Return Loss and Smith Chart



<b>RTS</b> <b>RIM Testing Services</b>	Document <b>Annex B to Hearing Aid Compatibility RF Emissions Test Report for the BlackBerry® Smartphone model RBJ41GW</b>		Page 34(35)
	Author Data <b>Daoud Attayi</b>	Dates of Test <b>June 01-05, 2007</b>	Report No <b>RTS-0510-0706-05</b>

### 3.3.2 DASY4 H-field result

Date/Time: 12/6/2005 7:35:29 PM

Test Laboratory: SPEAG, Zurich, Switzerland

**DUT: HAC Dipole 1880 MHz; Type: CD1880V3; Serial: 1008**

Communication System: CW; Frequency: 1880 MHz; Duty Cycle: 1:1

Medium: Air

Medium parameters used:  $\sigma = 0$  mho/m,  $\epsilon_r = 1$ ;  $\rho = 1$  kg/m<sup>3</sup>

Phantom section: H Dipole Section

DASY4 Configuration:

- Probe: H3DV6 - SN6065; Calibrated: 12/10/2004
- Sensor-Surface: (Fix Surface)
- Electronics: DAE4 Sn660; Calibrated: 12/16/2004
- Phantom: HAC Test Arch 4.6; Type: SD HAC P01 BA; Serial: 1002
- Measurement SW: DASY4, V4.6 Build 23; Postprocessing SW: SEMCAD, V1.8 Build 160

**H Scan 10mm above CD1880V3/Hearing Aid Compatibility Test (41x181x1):**

Measurement grid: dx=5mm, dy=5mm

Maximum value of peak Total field = 0.454 A/m

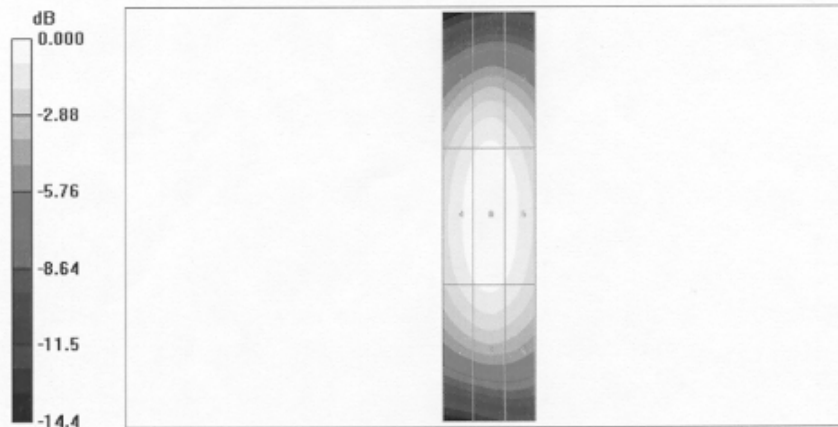
Probe Modulation Factor = 1.00

Reference Value = 0.480 A/m; Power Drift = -0.009 dB

**Hearing Aid Near-Field Category: M2 (AWF 0 dB)**

Peak H-field in A/m

Grid 1	Grid 2	Grid 3
0.395	0.420	0.403
Grid 4	Grid 5	Grid 6
0.431	0.454	0.437
Grid 7	Grid 8	Grid 9
0.396	0.417	0.401



0 dB = 0.454A/m

<b>RTS</b> <b>RIM Testing Services</b>	Document <b>Annex B to Hearing Aid Compatibility RF Emissions Test Report for the BlackBerry® Smartphone model RBJ41GW</b>		Page 35(35)
	Author Data <b>Daoud Attayi</b>	Dates of Test <b>June 01-05, 2007</b>	Report No <b>RTS-0510-0706-05</b>

### 3.3.3 DASY4 E-Field result

Date/Time: 12/6/2005 8:20:46 PM

Test Laboratory: SPEAG, Zurich, Switzerland

DUT: HAC Dipole 1880 MHz; Type: CD1880V3; Serial: 1008

Communication System: CW; Frequency: 1880 MHz; Duty Cycle: 1:1

Medium: Air

Medium parameters used:  $\sigma = 0$  mho/m,  $\epsilon_r = 1$ ;  $\rho = 1000$  kg/m<sup>3</sup>

Phantom section: E Dipole Section

DASY4 Configuration:

- Probe: ER3DV6 - SN2336; ConvF(1, 1, 1); Calibrated: 1/20/2005
- Sensor-Surface: (Fix Surface)
- Electronics: DAE4 Sn660; Calibrated: 12/16/2004
- Phantom: HAC Test Arch 4.6; Type: SD HAC P01 BA; Serial: 1002
- Measurement SW: DASY4, V4.6 Build 23; Postprocessing SW: SEMCAD, V1.8 Build 160

E Scan 10mm above CD1880V3/Hearing Aid Compatibility Test (41x181x1):

Measurement grid: dx=5mm, dy=5mm

Maximum value of peak Total field = 132.9 V/m

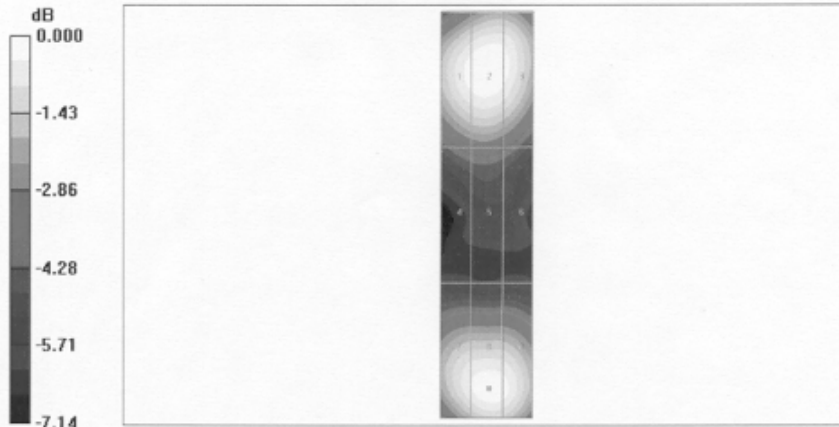
Probe Modulation Factor = 1.00

Reference Value = 147.2 V/m; Power Drift = 0.033 dB

Hearing Aid Near-Field Category: M2 (AWF 0 dB)

Peak E-field in V/m

Grid 1	Grid 2	Grid 3
129.6	132.9	129.3
Grid 4	Grid 5	Grid 6
90.4	92.1	88.0
Grid 7	Grid 8	Grid 9
125.5	131.8	129.5



0 dB = 132.9V/m