

RTS RIM Testing Services	Document Appendices for the BlackBerry® Smartphone Model RBJ41GW SAR Report		Page 1(78)
Author Data Shahriar Ninad	Dates of Test May 23-June 01, 2007	Test Report No RTS-0510-0706-03	FCC ID: L6ARBJ40GW

APPENDIX A: SAR DISTRIBUTION COMPARISON FOR ACCURACY VERIFICATION

RTS RIM Testing Services	Document Appendices for the BlackBerry® Smartphone Model RBJ41GW SAR Report		Page 2(78)
	Author Data Shahriar Ninad	Dates of Test May 23-June 01, 2007	Test Report No RTS-0510-0706-03

Date/Time: 24/05/2007 2:50:28 PM

Test Laboratory: RTS

DipoleValidation_835MHz_Amb_Tem_24_5_Liq_Tem_22_7_C

DUT: Dipole 835 MHz; Type: D835V2; Serial: D835V2 - SN:446

Communication System: CW; Frequency: 835 MHz; Duty Cycle: 1:1

Medium parameters used: $f = 835 \text{ MHz}$; $\sigma = 0.944 \text{ mho/m}$; $\epsilon_r = 41.5$; $\rho = 1000 \text{ kg/m}^3$

Phantom section: Flat Section

DASY4 Configuration:

- Probe: ET3DV6 - SN1642; ConvF(6.41, 6.41, 6.41); Calibrated: 15/01/2007
- Sensor-Surface: 4mm (Mechanical Surface Detection)
- Electronics: DAE3 Sn472; Calibrated: 07/03/2007
- Phantom: SAM 1; Type: SAM 4.0; Serial: 1076
- Measurement SW: DASY4, V4.7 Build 53; Postprocessing SW: SEMCAD, V1.8 Build 172

d=15mm, Pin=1000mW/Zoom Scan (7x7x7) (7x7x7)/Cube 0: Measurement grid: dx=5mm, dy=5mm, dz=5mm

Reference Value = 107.4 V/m; Power Drift = 0.000 dB

Peak SAR (extrapolated) = 14.0 W/kg

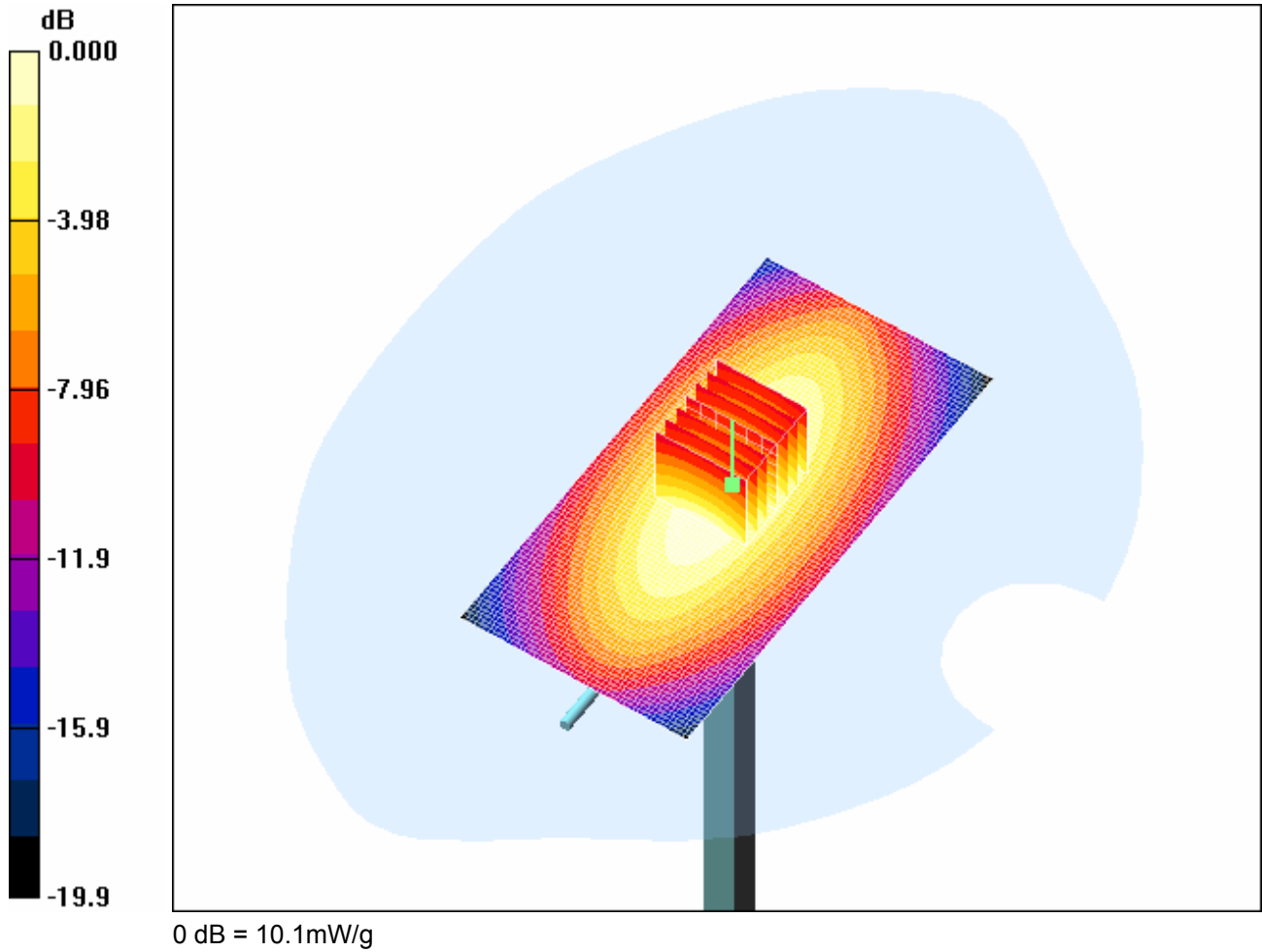
SAR(1 g) = 9.38 mW/g; SAR(10 g) = 6.12 mW/g

Maximum value of SAR (measured) = 10.2 mW/g

d=15mm, Pin=1000mW/Area Scan (51x101x1): Measurement grid: dx=15mm, dy=15mm

Maximum value of SAR (interpolated) = 10.1 mW/g

RTS RIM Testing Services	Document Appendices for the BlackBerry® SmartphoneModel RBJ41GW SAR Report		Page 3(78)
	Author Data Shahriar Ninad	Dates of Test May 23-June 01, 2007	Test Report No RTS-0510-0706-03



RTS RIM Testing Services	Document Appendices for the BlackBerry® Smartphone Model RBJ41GW SAR Report		Page 4(78)
	Author Data Shahriar Ninad	Dates of Test May 23-June 01, 2007	Test Report No RTS-0510-0706-03

Date/Time: 28/05/2007 9:34:19 AM

Test Laboratory: RTS

DipoleValidation_835MHz_Amb_Tem_24_7_Liq_Tem_23_5_C

DUT: Dipole 835 MHz; Type: D835V2; Serial: D835V2 - SN:446

Communication System: CW; Frequency: 835 MHz; Duty Cycle: 1:1

Medium parameters used: $f = 835 \text{ MHz}$; $\sigma = 0.934 \text{ mho/m}$; $\epsilon_r = 42.4$; $\rho = 1000 \text{ kg/m}^3$

Phantom section: Flat Section

DASY4 Configuration:

- Probe: ET3DV6 - SN1642; ConvF(6.41, 6.41, 6.41); Calibrated: 15/01/2007
- Sensor-Surface: 4mm (Mechanical Surface Detection)
- Electronics: DAE3 Sn472; Calibrated: 07/03/2007
- Phantom: SAM 1; Type: SAM 4.0; Serial: 1076
- Measurement SW: DASY4, V4.7 Build 53; Postprocessing SW: SEMCAD, V1.8 Build 172

d=15mm, Pin=1000mW/Zoom Scan (7x7x7) (7x7x7)/Cube 0: Measurement grid: dx=5mm,

dy=5mm, dz=5mm

Reference Value = 109.0 V/m; Power Drift = -0.022 dB

Peak SAR (extrapolated) = 14.1 W/kg

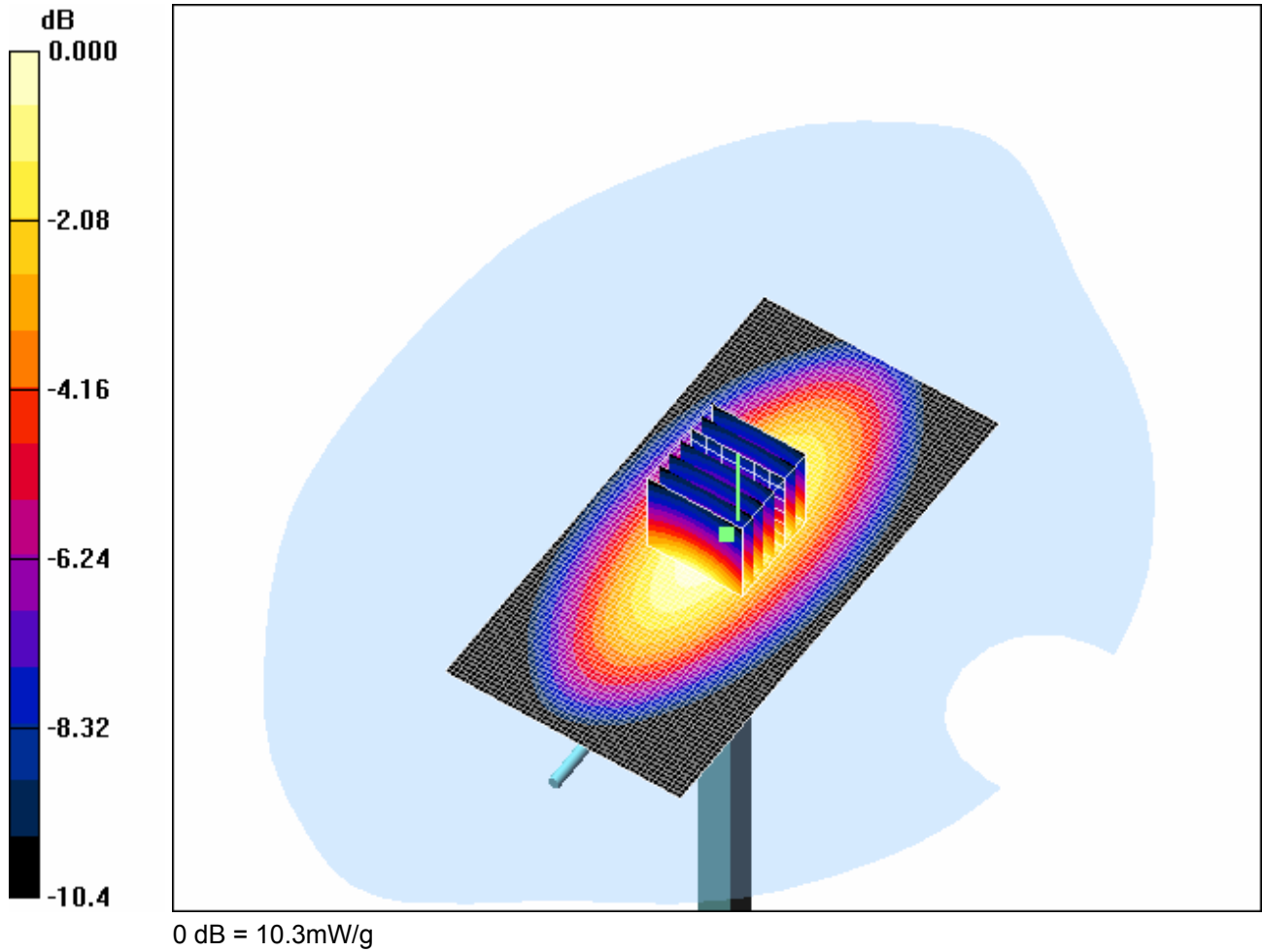
SAR(1 g) = 9.57 mW/g; SAR(10 g) = 6.25 mW/g

Maximum value of SAR (measured) = 10.3 mW/g

d=15mm, Pin=1000mW/Area Scan (51x101x1): Measurement grid: dx=15mm, dy=15mm

Maximum value of SAR (interpolated) = 10.4 mW/g

RTS RIM Testing Services	Document Appendices for the BlackBerry® SmartphoneModel RBJ41GW SAR Report		Page 5(78)
	Author Data Shahriar Ninad	Dates of Test May 23-June 01, 2007	Test Report No RTS-0510-0706-03



RTS RIM Testing Services	Document Appendices for the BlackBerry® Smartphone Model RBJ41GW SAR Report		Page 6(78)
	Author Data Shahriar Ninad	Dates of Test May 23-June 01, 2007	Test Report No RTS-0510-0706-03

Date/Time: 31/05/2007 11:59:36 PM

Test Laboratory: RTS

File Name: [DipoleValidation_835MHz_Amb_Tem_24_2_Liq_Tem_22_9_C.da4](#)

DUT: Dipole 835 MHz; Type: D835V2; Serial: D835V2 - SN:446
Program Name: System Performance Check at 835 MHz

Communication System: CW; Frequency: 835 MHz; Duty Cycle: 1:1
Medium parameters used: $f = 835 \text{ MHz}$; $\sigma = 0.862 \text{ mho/m}$; $\epsilon_r = 39.5$; $\rho = 1000 \text{ kg/m}^3$
Phantom section: Flat Section

DASY4 Configuration:

- Probe: ET3DV6 - SN1642; ConvF(6.41, 6.41, 6.41); Calibrated: 15/01/2007
- Sensor-Surface: 4mm (Mechanical Surface Detection)
- Electronics: DAE3 Sn472; Calibrated: 07/03/2007
- Phantom: SAM 1; Type: SAM 4.0; Serial: 1076
- Measurement SW: DASY4, V4.7 Build 53; Postprocessing SW: SEMCAD, V1.8 Build 172

d=15mm, Pin=1000mW/Zoom Scan (7x7x7) (7x7x7)/Cube 0: Measurement grid: dx=5mm, dy=5mm, dz=5mm

Reference Value = 113.1 V/m; Power Drift = -0.044 dB

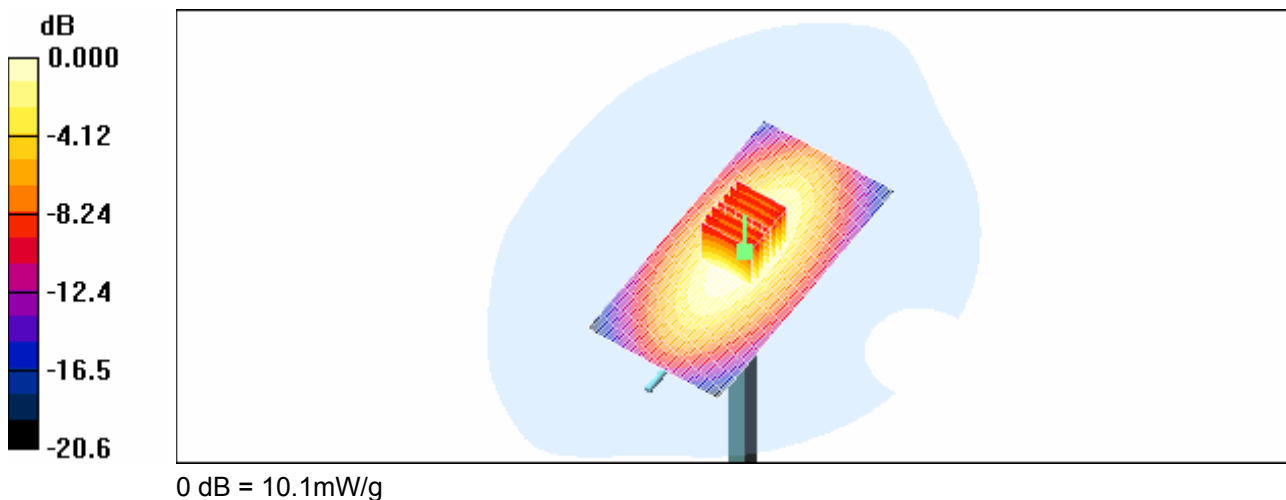
Peak SAR (extrapolated) = 13.9 W/kg

SAR(1 g) = 9.38 mW/g; SAR(10 g) = 6.12 mW/g

Maximum value of SAR (measured) = 10.2 mW/g

d=15mm, Pin=1000mW/Area Scan (51x101x1): Measurement grid: dx=15mm, dy=15mm

Maximum value of SAR (interpolated) = 10.1 mW/g



RTS RIM Testing Services	Document Appendices for the BlackBerry® Smartphone Model RBJ41GW SAR Report		Page 7(78)
	Author Data Shahriar Ninad	Dates of Test May 23-June 01, 2007	Test Report No RTS-0510-0706-03

Date/Time: 28/05/2007 10:16:22 PM

Test Laboratory: RTS

DipoleValidation_1900MHz_Amb_Tem_24_8_Liq_Tem_23_2_C_05_28_07

DUT: Dipole 1900 MHz; Type: D1900V2; Serial: D1900V2 - SN:545

Communication System: CW; Frequency: 1900 MHz; Duty Cycle: 1:1

Medium parameters used: $f = 1900$ MHz; $\sigma = 1.42$ mho/m; $\epsilon_r = 38.2$; $\rho = 1000$ kg/m³

Phantom section: Flat Section

DASY4 Configuration:

- Probe: ET3DV6 - SN1642; ConvF(5.28, 5.28, 5.28); Calibrated: 15/01/2007
- Sensor-Surface: 4mm (Mechanical Surface Detection)
- Electronics: DAE3 Sn472; Calibrated: 07/03/2007
- Phantom: SAM 1; Type: SAM 4.0; Serial: 1076
- Measurement SW: DASY4, V4.7 Build 53; Postprocessing SW: SEMCAD, V1.8 Build 172

d=15mm, Pin=1000mW/Zoom Scan (7x7x7) (7x7x7)/Cube 0: Measurement grid: dx=5mm,

dy=5mm, dz=5mm

Reference Value = 183.1 V/m; Power Drift = -0.034 dB

Peak SAR (extrapolated) = 65.6 W/kg

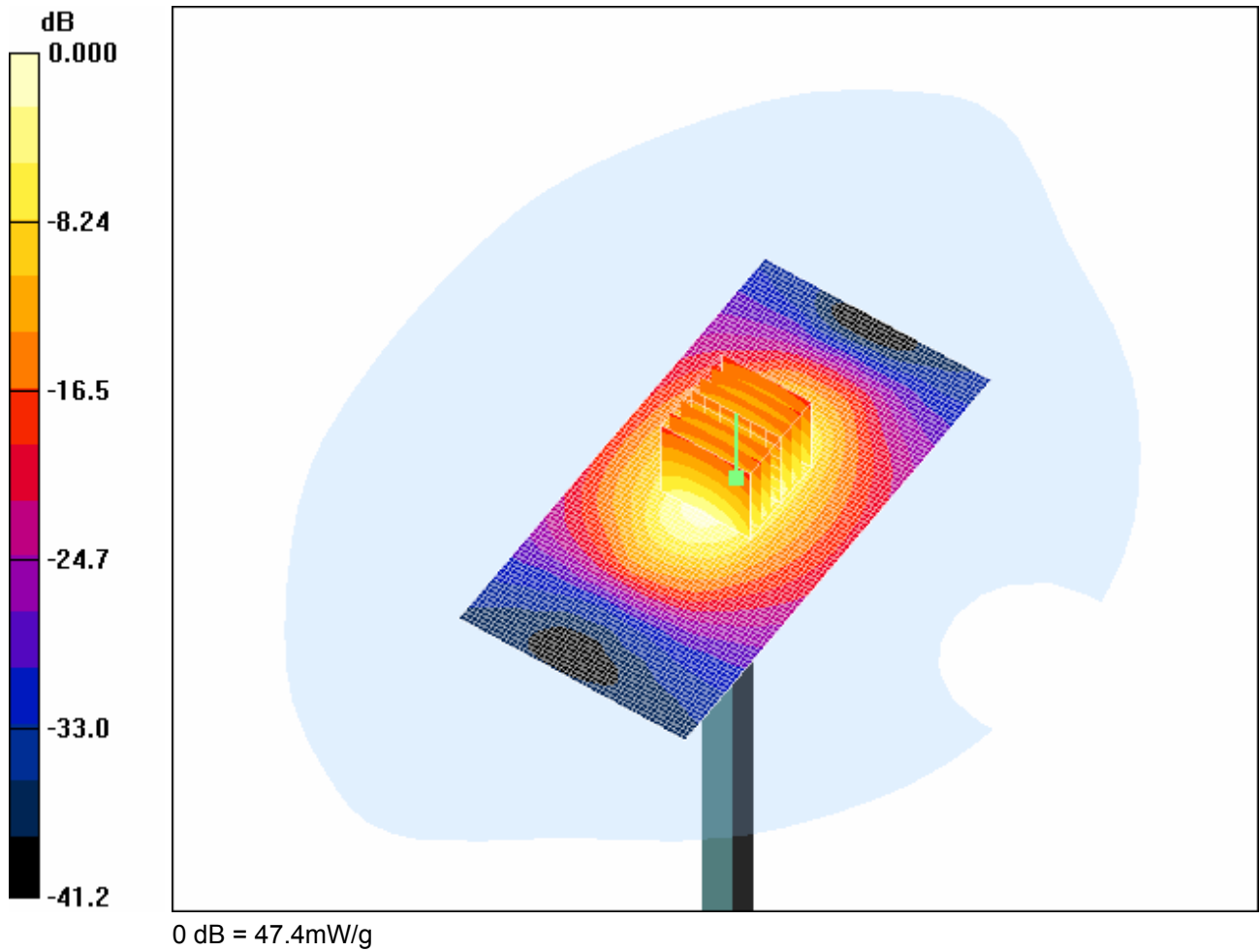
SAR(1 g) = 37.4 mW/g; SAR(10 g) = 19.5 mW/g

Maximum value of SAR (measured) = 42.4 mW/g

d=15mm, Pin=1000mW/Area Scan (51x101x1): Measurement grid: dx=15mm, dy=15mm

Maximum value of SAR (interpolated) = 47.4 mW/g

RTS RIM Testing Services	Document Appendices for the BlackBerry® SmartphoneModel RBJ41GW SAR Report		Page 8(78)
	Author Data Shahriar Ninad	Dates of Test May 23-June 01, 2007	Test Report No RTS-0510-0706-03



RTS RIM Testing Services	Document Appendices for the BlackBerry® Smartphone Model RBJ41GW SAR Report		Page 9(78)
	Author Data Shahriar Ninad	Dates of Test May 23-June 01, 2007	Test Report No RTS-0510-0706-03

Date/Time: 31/05/2007 2:43:51 PM

Test Laboratory: RTS

File Name: [DipoleValidation_1900MHz_Amb_Tem_24_7_Liq_Tem_23_2_C_05_31_07.da](#)

DUT: Dipole 1900 MHz; Type: D1900V2; Serial: D1900V2 - SN:545
Program Name: System Performance Check at 835 MHz

Communication System: CW; Frequency: 1900 MHz; Duty Cycle: 1:1
Medium parameters used: $f = 1900$ MHz; $\sigma = 1.46$ mho/m; $\epsilon_r = 38.1$; $\rho = 1000$ kg/m³
Phantom section: Flat Section

DASY4 Configuration:

- Probe: ET3DV6 - SN1642; ConvF(5.28, 5.28, 5.28); Calibrated: 15/01/2007
- Sensor-Surface: 4mm (Mechanical Surface Detection)
- Electronics: DAE3 Sn472; Calibrated: 07/03/2007
- Phantom: SAM 1; Type: SAM 4.0; Serial: 1076
- Measurement SW: DASY4, V4.7 Build 53; Postprocessing SW: SEMCAD, V1.8 Build 172

d=15mm, Pin=1000mW/Zoom Scan (5x5x7) 2 (5x5x7)/Cube 0: Measurement grid: dx=7.5mm, dy=7.5mm, dz=5mm

Reference Value = 184.1 V/m; Power Drift = 0.017 dB

Peak SAR (extrapolated) = 68.6 W/kg

SAR(1 g) = 39.1 mW/g; SAR(10 g) = 20.4 mW/g

Maximum value of SAR (measured) = 44.1 mW/g

d=15mm, Pin=1000mW/Zoom Scan (7x7x7) (7x7x7)/Cube 0: Measurement grid: dx=5mm, dy=5mm, dz=5mm

Reference Value = 184.1 V/m; Power Drift = 0.017 dB

Peak SAR (extrapolated) = 69.4 W/kg

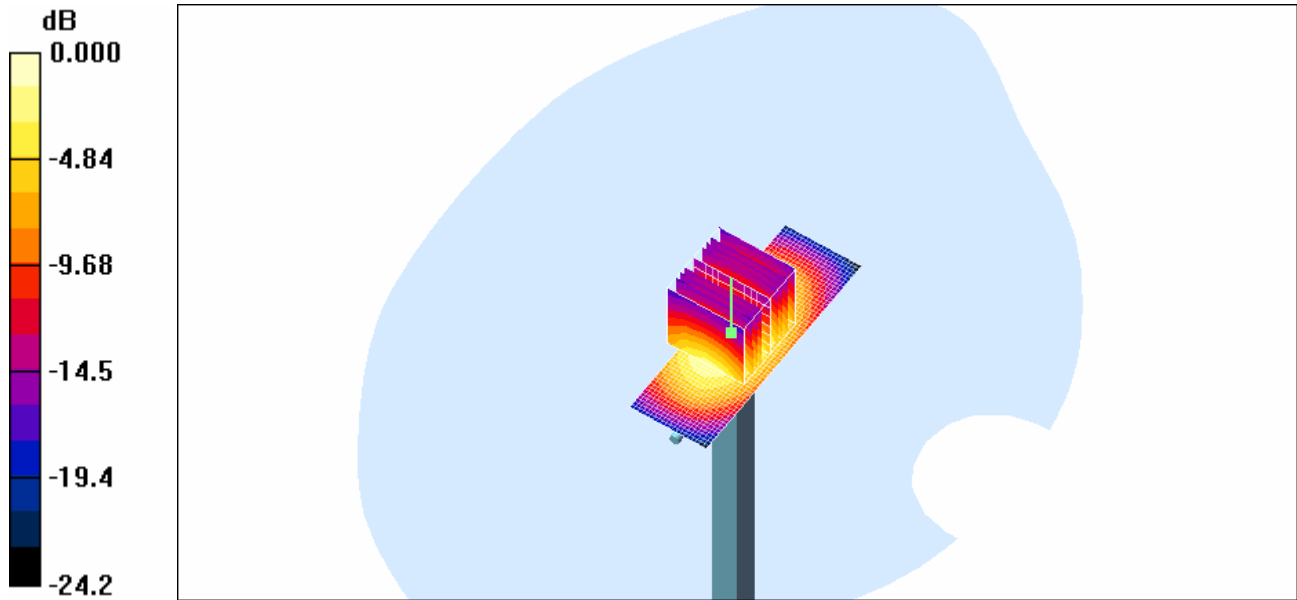
SAR(1 g) = 39.4 mW/g; SAR(10 g) = 20.6 mW/g

Maximum value of SAR (measured) = 44.3 mW/g

d=15mm, Pin=1000mW/Area Scan (21x61x1): Measurement grid: dx=15mm, dy=15mm

Maximum value of SAR (interpolated) = 45.1 mW/g

RTS RIM Testing Services	Document Appendices for the BlackBerry® Smartphone Model RBJ41GW SAR Report		Page 10(78)
	Author Data Shahriar Ninad	Dates of Test May 23-June 01, 2007	Test Report No RTS-0510-0706-03



0 dB = 45.1mW/g

RTS RIM Testing Services	Document Appendices for the BlackBerry® Smartphone Model RBJ41GW SAR Report		Page 11(78)
	Author Data Shahriar Ninad	Dates of Test May 23-June 01, 2007	Test Report No RTS-0510-0706-03

Date/Time: 30/05/2007 11:17:55 AM

Test Laboratory: RTS

DipoleValidation_2450MHz_Amb_Tem_24_3_Liq_Tem_23_5_C_05_30_07

DUT: Dipole 2450 MHz; Type: D2450V2; Serial: D2450V2 - SN:xxx

Communication System: CW; Frequency: 2450 MHz; Duty Cycle: 1:1

Medium parameters used: $f = 2450$ MHz; $\sigma = 1.88$ mho/m; $\epsilon_r = 37.2$; $\rho = 1000$ kg/m³

Phantom section: Flat Section

DASY4 Configuration:

- Probe: EX3DV4 - SN3548; ConvF(7.07, 7.07, 7.07); Calibrated: 19/01/2007
- Sensor-Surface: 2mm (Mechanical Surface Detection) Sensor-Surface: 4mm (Mechanical Surface Detection)
- Electronics: DAE3 Sn472; Calibrated: 07/03/2007
- Phantom: SAM 1; Type: SAM 4.0; Serial: 1076
- Measurement SW: DASY4, V4.7 Build 53; Postprocessing SW: SEMCAD, V1.8 Build 172

d=15mm, Pin=1000mW/Zoom Scan (7x7x7) (7x7x7)/Cube 0: Measurement grid: dx=5mm, dy=5mm, dz=5mm

Reference Value = 185.0 V/m; Power Drift = 0.044 dB

Peak SAR (extrapolated) = 111.6 W/kg

SAR(1 g) = 54.7 mW/g; SAR(10 g) = 25.2 mW/g

Maximum value of SAR (measured) = 83.6 mW/g

d=15mm, Pin=1000mW/Zoom Scan (8x8x8) 2 2 (8x8x8)/Cube 0: Measurement grid:

dx=4.3mm, dy=4.3mm, dz=3mm

Reference Value = 185.0 V/m; Power Drift = 0.044 dB

Peak SAR (extrapolated) = 109.0 W/kg

SAR(1 g) = 54.6 mW/g; SAR(10 g) = 25.2 mW/g

Maximum value of SAR (measured) = 80.8 mW/g

d=15mm, Pin=1000mW/Zoom Scan (5x5x7) 2 (5x5x7)/Cube 0: Measurement grid: dx=7.5mm, dy=7.5mm, dz=5mm

Reference Value = 185.0 V/m; Power Drift = 0.044 dB

Peak SAR (extrapolated) = 111.0 W/kg

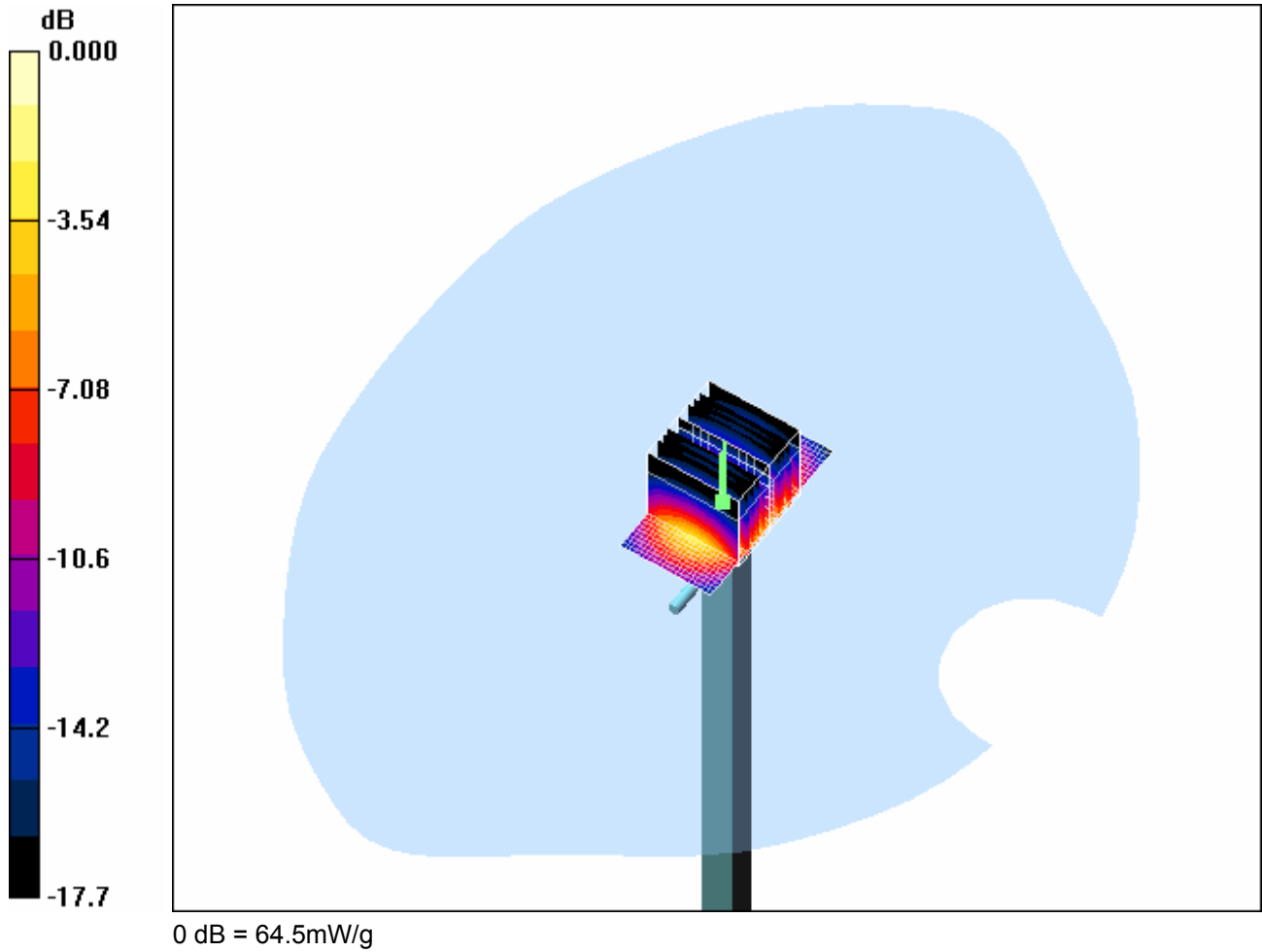
SAR(1 g) = 54.5 mW/g; SAR(10 g) = 25 mW/g

Maximum value of SAR (measured) = 83.5 mW/g

d=15mm, Pin=1000mW/Area Scan (21x41x1): Measurement grid: dx=15mm, dy=15mm

Maximum value of SAR (interpolated) = 64.5 mW/g

RTS RIM Testing Services	Document Appendices for the BlackBerry® SmartphoneModel RBJ41GW SAR Report		Page 12(78)
	Author Data Shahriar Ninad	Dates of Test May 23-June 01, 2007	Test Report No RTS-0510-0706-03



RTS RIM Testing Services	Document Appendices for the BlackBerry® Smartphone Model RBJ41GW SAR Report		Page 13(78)
	Author Data Shahriar Ninad	Dates of Test May 23-June 01, 2007	Test Report No RTS-0510-0706-03
		FCC ID: L6ARBJ40GW	

APPENDIX B: SAR DISTRIBUTION PLOTS FOR HEAD CONFIGURATION

RTS RIM Testing Services	Document Appendices for the BlackBerry® Smartphone Model RBJ41GW SAR Report		Page 14(78)
	Author Data Shahriar Ninad	Dates of Test May 23-June 01, 2007	Test Report No RTS-0510-0706-03

Date/Time: 24/05/2007 10:42:53 PM

Test Laboratory: RTS

File Name: [LeftHandSide_GSM850_low_chan_amb_temp_23.9_liq_temp_22.8C.da4](#)

DUT: BlackBerry Smartphone; Type: Sample ; Serial: Not Specified
Program Name: Compliance Testing: P1528 Protocol (Left-Hand Side)

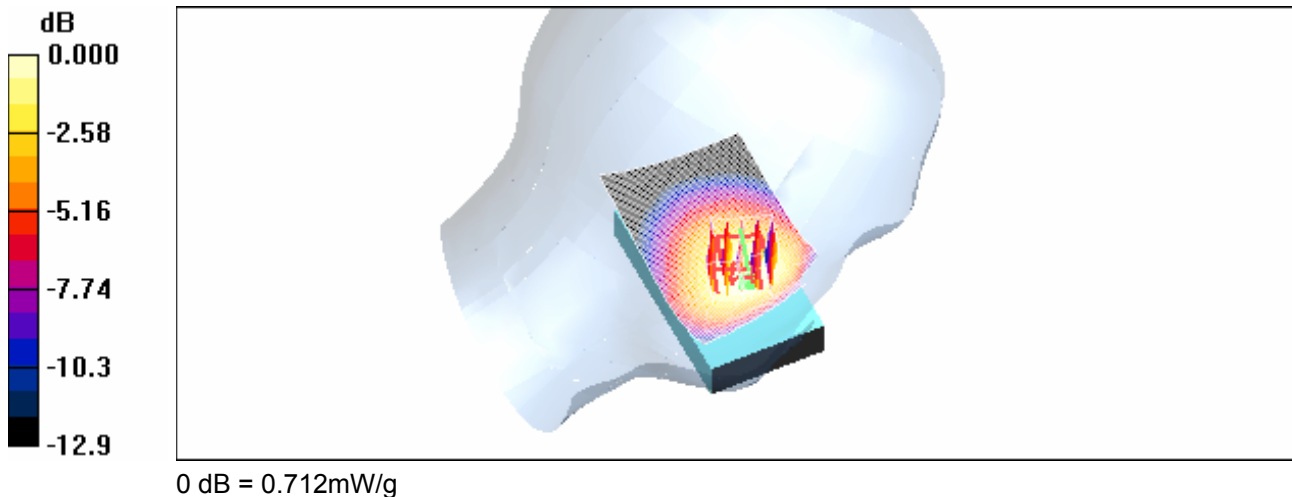
Communication System: GSM 850; Frequency: 824.2 MHz; Duty Cycle: 1:8.3
Medium parameters used: $f = 825$ MHz; $\sigma = 0.936$ mho/m; $\epsilon_r = 41.7$; $\rho = 1000$ kg/m³
Phantom section: Left Section

DASY4 Configuration:

- Probe: ET3DV6 - SN1642; ConvF(6.41, 6.41, 6.41); Calibrated: 15/01/2007
- Sensor-Surface: 4mm (Mechanical Surface Detection)
- Electronics: DAE3 Sn472; Calibrated: 07/03/2007
- Phantom: SAM 1; Type: SAM 4.0; Serial: 1076
- Measurement SW: DASY4, V4.7 Build 53; Postprocessing SW: SEMCAD, V1.8 Build 172

Touch position - Low/Area Scan (51x81x1): Measurement grid: dx=15mm, dy=15mm
Maximum value of SAR (interpolated) = 0.756 mW/g

Touch position - Low/Zoom Scan (5x5x7) (5x5x7)/Cube 0: Measurement grid: dx=7.5mm, dy=7.5mm, dz=5mm
Reference Value = 10.3 V/m; Power Drift = 0.038 dB
Peak SAR (extrapolated) = 0.847 W/kg
SAR(1 g) = 0.683 mW/g; SAR(10 g) = 0.502 mW/g
Maximum value of SAR (measured) = 0.712 mW/g



RTS RIM Testing Services	Document Appendices for the BlackBerry® Smartphone Model RBJ41GW SAR Report		Page 15(78)
	Author Data Shahriar Ninad	Dates of Test May 23-June 01, 2007	Test Report No RTS-0510-0706-03

Date/Time: 24/05/2007 10:02:07 PM

Test Laboratory: RTS

File Name: [LeftHandSide_EDGE850_low_chan_amb_temp_23.9_liq_temp_22.9C.da4](#)

DUT: BlackBerry Smartphone; Type: Sample ; Serial: Not Specified
Program Name: Compliance Testing: P1528 Protocol (Left -Hand Side)

Communication System: EDGE 850; Frequency: 824.2 MHz; Duty Cycle: 1:4.2
Medium parameters used: $f = 825 \text{ MHz}$; $\sigma = 0.936 \text{ mho/m}$; $\epsilon_r = 41.7$; $\rho = 1000 \text{ kg/m}^3$
Phantom section: Left Section

DASY4 Configuration:

- Probe: ET3DV6 - SN1642; ConvF(6.41, 6.41, 6.41); Calibrated: 15/01/2007
- Sensor-Surface: 4mm (Mechanical Surface Detection)
- Electronics: DAE3 Sn472; Calibrated: 07/03/2007
- Phantom: SAM 1; Type: SAM 4.0; Serial: 1076
- Measurement SW: DASY4, V4.7 Build 53; Postprocessing SW: SEMCAD, V1.8 Build 172

Touch position - Low/Zoom Scan (5x5x7) (5x5x7)/Cube 0: Measurement grid: dx=7.5mm, dy=7.5mm, dz=5mm

Reference Value = 11.3 V/m; Power Drift = -0.065 dB

Peak SAR (extrapolated) = 1.02 W/kg

SAR(1 g) = 0.822 mW/g; SAR(10 g) = 0.603 mW/g

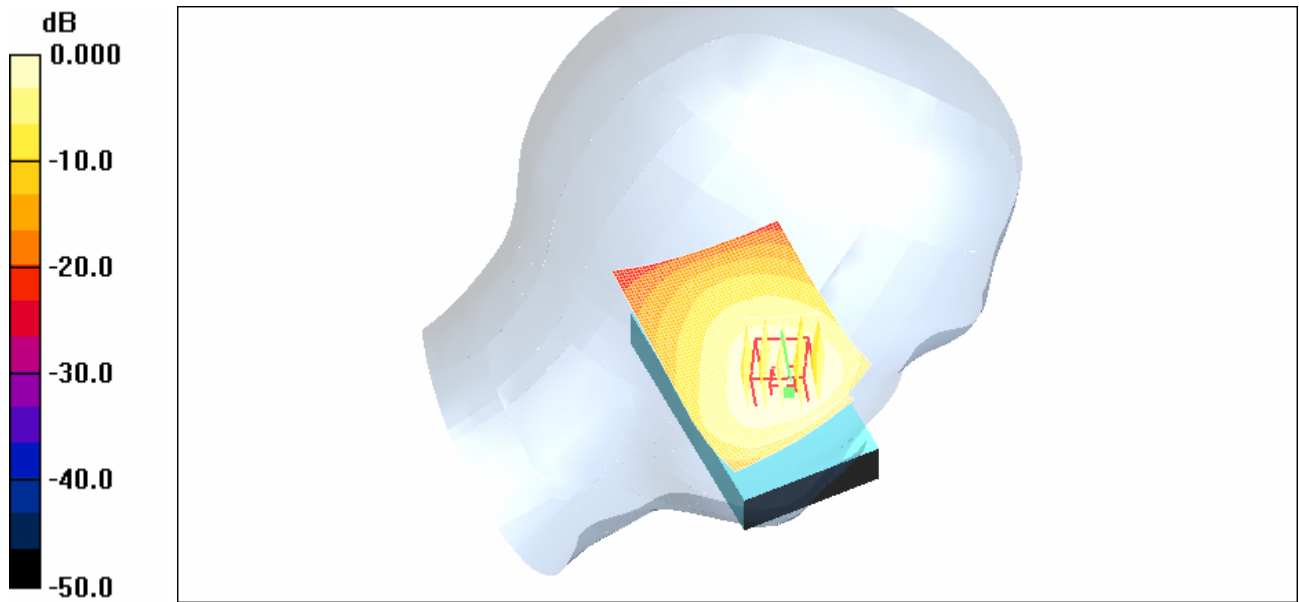
Maximum value of SAR (measured) = 0.856 mW/g

Touch position - Low/Area Scan (51x81x1): Measurement grid: dx=15mm, dy=15mm

[Info: Interpolated medium parameters used for SAR evaluation.](#)

Maximum value of SAR (interpolated) = 0.893 mW/g

RTS RIM Testing Services	Document Appendices for the BlackBerry® SmartphoneModel RBJ41GW SAR Report		Page 16(78)
	Author Data Shahriar Ninad	Dates of Test May 23-June 01, 2007	Test Report No RTS-0510-0706-03



0 dB = 0.893mW/g

RTS RIM Testing Services	Document Appendices for the BlackBerry® Smartphone Model RBJ41GW SAR Report		Page 17(78)
	Author Data Shahriar Ninad	Dates of Test May 23-June 01, 2007	Test Report No RTS-0510-0706-03

Date/Time: 25/05/2007 3:26:42 PM

Test Laboratory: RTS

File Name: [LeftHandSide_tilt_EDGE850_low_chan_amb_temp_23.9_liq_temp_22.9C.da4](#)

DUT: BlackBerry Smartphone; Type: Sample ; Serial: Not Specified
Program Name: Compliance Testing: P1528 Protocol (Left -Hand Side)

Communication System: GPRS 850; Frequency: 824.2 MHz; Duty Cycle: 1:4.2
Medium parameters used: $f = 825 \text{ MHz}$; $\sigma = 0.936 \text{ mho/m}$; $\epsilon_r = 41.7$; $\rho = 1000 \text{ kg/m}^3$
Phantom section: Left Section

DASY4 Configuration:

- Probe: ET3DV6 - SN1642; ConvF(6.41, 6.41, 6.41); Calibrated: 15/01/2007
- Sensor-Surface: 4mm (Mechanical Surface Detection)
- Electronics: DAE3 Sn472; Calibrated: 07/03/2007
- Phantom: SAM 1; Type: SAM 4.0; Serial: 1076
- Measurement SW: DASY4, V4.7 Build 53; Postprocessing SW: SEMCAD, V1.8 Build 172

Tilt position - Low/Area Scan (51x91x1): Measurement grid: $dx=15\text{mm}$, $dy=15\text{mm}$
Maximum value of SAR (interpolated) = 0.487 mW/g

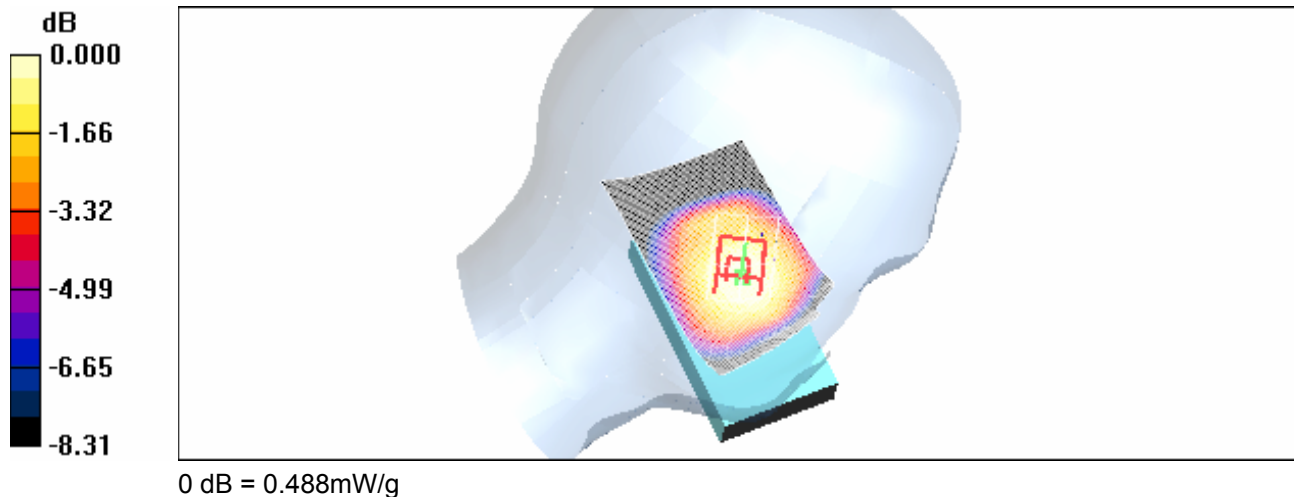
Tilt position - Low/Zoom Scan (5x5x7) (5x5x7)/Cube 0: Measurement grid: $dx=7.5\text{mm}$,
 $dy=7.5\text{mm}$, $dz=5\text{mm}$

Reference Value = 17.6 V/m; Power Drift = -0.065 dB

Peak SAR (extrapolated) = 0.577 W/kg

SAR(1 g) = 0.463 mW/g; SAR(10 g) = 0.349 mW/g

Maximum value of SAR (measured) = 0.488 mW/g



RTS RIM Testing Services	Document Appendices for the BlackBerry® Smartphone Model RBJ41GW SAR Report		Page 18(78)
	Author Data Shahriar Ninad	Dates of Test May 23-June 01, 2007	Test Report No RTS-0510-0706-03

Date/Time: 29/05/2007 10:15:30 AM

Test Laboratory: RTS

LeftHandSide_GSM1900_mid_chan_amb_temp_23.9_liq_temp_23.2C

DUT: BlackBerry Smartphone; Type: Sample ; Serial: Not Specified

Communication System: GSM 1900; Frequency: 1880 MHz; Duty Cycle: 1:8.3

Medium parameters used: $f = 1880$ MHz; $\sigma = 1.4$ mho/m; $\epsilon_r = 38$; $\rho = 1000$ kg/m³

Phantom section: Left Section

DASY4 Configuration:

- Probe: ET3DV6 - SN1642; ConvF(5.28, 5.28, 5.28); Calibrated: 15/01/2007
- Sensor-Surface: 4mm (Mechanical Surface Detection)
- Electronics: DAE3 Sn472; Calibrated: 07/03/2007
- Phantom: SAM 1; Type: SAM 4.0; Serial: 1076
- Measurement SW: DASY4, V4.7 Build 53; Postprocessing SW: SEMCAD, V1.8 Build 172

Touch position - Middle/Area Scan (51x81x1): Measurement grid: dx=15mm, dy=15mm

Maximum value of SAR (interpolated) = 0.560 mW/g

Touch position - Middle/Zoom Scan (5x5x7) (5x5x7)/Cube 0: Measurement grid: dx=7.5mm, dy=7.5mm, dz=5mm

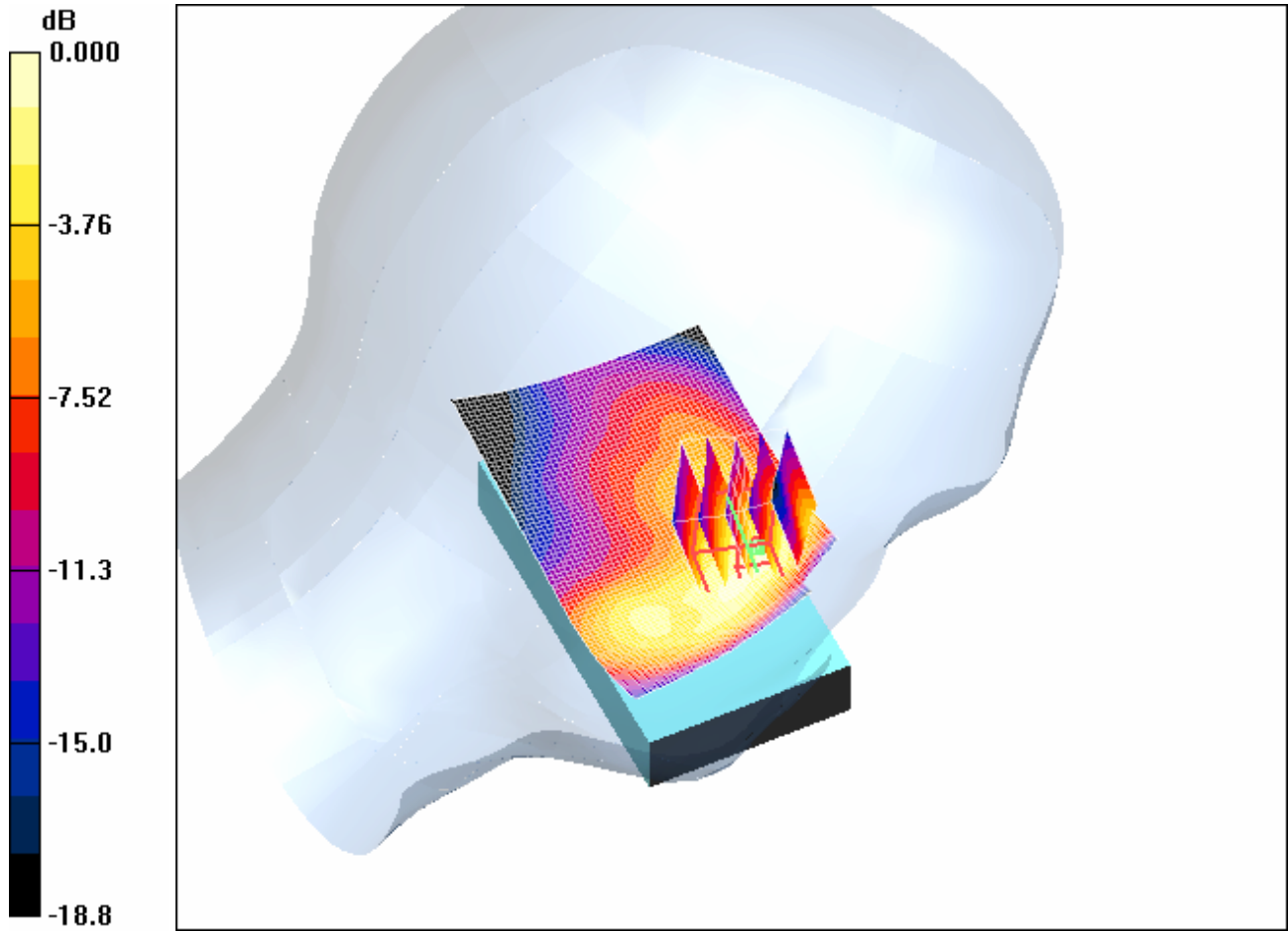
Reference Value = 6.80 V/m; Power Drift = -0.104 dB

Peak SAR (extrapolated) = 0.882 W/kg

SAR(1 g) = 0.573 mW/g; SAR(10 g) = 0.339 mW/g

Maximum value of SAR (measured) = 0.653 mW/g

RTS RIM Testing Services	Document Appendices for the BlackBerry® SmartphoneModel RBJ41GW SAR Report		Page 19(78)
	Author Data Shahriar Ninad	Dates of Test May 23-June 01, 2007	Test Report No RTS-0510-0706-03



0 dB = 0.653mW/g

RTS RIM Testing Services	Document Appendices for the BlackBerry® Smartphone Model RBJ41GW SAR Report		Page 20(78)
	Author Data Shahriar Ninad	Dates of Test May 23-June 01, 2007	Test Report No RTS-0510-0706-03

Date/Time: 29/05/2007 11:34:34 AM

Test Laboratory: RTS

File Name: [LeftHandSide_EDGE1900_mid_chan_amb_temp_23_9_liq_temp_23_4C.da4](#)

DUT: BlackBerry Smartphone; Type: Sample ; Serial: Not Specified
Program Name: Compliance Testing: P1528 Protocol (Left -Hand Side)

Communication System: EDGE 1900; Frequency: 1880 MHz; Duty Cycle: 1:4.2
Medium parameters used: $f = 1880 \text{ MHz}$; $\sigma = 1.4 \text{ mho/m}$; $\epsilon_r = 38$; $\rho = 1000 \text{ kg/m}^3$
Phantom section: Left Section

DASY4 Configuration:

- Probe: ET3DV6 - SN1642; ConvF(5.28, 5.28, 5.28); Calibrated: 15/01/2007
- Sensor-Surface: 4mm (Mechanical Surface Detection)
- Electronics: DAE3 Sn472; Calibrated: 07/03/2007
- Phantom: SAM 1; Type: SAM 4.0; Serial: 1076
- Measurement SW: DASY4, V4.7 Build 53; Postprocessing SW: SEMCAD, V1.8 Build 172

Touch position - Middle/Zoom Scan (5x5x7) (5x5x7)/Cube 0: Measurement grid: dx=7.5mm, dy=7.5mm, dz=5mm

Reference Value = 6.10 V/m; Power Drift = -0.184 dB

Peak SAR (extrapolated) = 0.820 W/kg

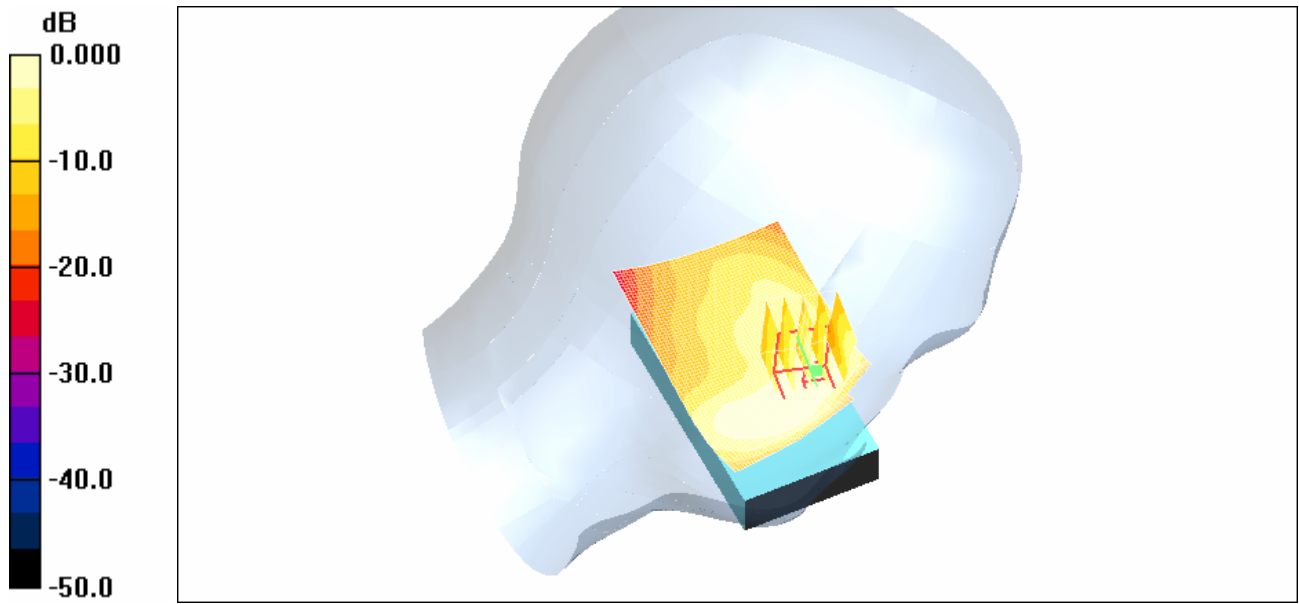
SAR(1 g) = 0.535 mW/g; SAR(10 g) = 0.315 mW/g

Maximum value of SAR (measured) = 0.611 mW/g

Touch position - Middle/Area Scan (51x81x1): Measurement grid: dx=15mm, dy=15mm

Maximum value of SAR (interpolated) = 0.528 mW/g

RTS RIM Testing Services	Document Appendices for the BlackBerry® SmartphoneModel RBJ41GW SAR Report		Page 21(78)
	Author Data Shahriar Ninad	Dates of Test May 23-June 01, 2007	Test Report No RTS-0510-0706-03



0 dB = 0.528mW/g

RTS RIM Testing Services	Document Appendices for the BlackBerry® Smartphone Model RBJ41GW SAR Report		Page 22(78)
	Author Data Shahriar Ninad	Dates of Test May 23-June 01, 2007	Test Report No RTS-0510-0706-03

Date/Time: 29/05/2007 10:31:45 AM

Test Laboratory: RTS

LeftHandSide_Tilt_EDGE1900_mid_chan_amb_temp_24_0_liq_temp_23_1C

DUT: BlackBerry Smartphone; Type: Sample ; Serial: Not Specified

Communication System: EDGE 1900; Frequency: 1880 MHz; Duty Cycle: 1:4.2

Medium parameters used: $f = 1880$ MHz; $\sigma = 1.4$ mho/m; $\epsilon_r = 38$; $\rho = 1000$ kg/m³

Phantom section: Left Section

DASY4 Configuration:

- Probe: ET3DV6 - SN1642; ConvF(5.28, 5.28, 5.28); Calibrated: 15/01/2007
- Sensor-Surface: 4mm (Mechanical Surface Detection)
- Electronics: DAE3 Sn472; Calibrated: 07/03/2007
- Phantom: SAM 1; Type: SAM 4.0; Serial: 1076
- Measurement SW: DASY4, V4.7 Build 53; Postprocessing SW: SEMCAD, V1.8 Build 172

Tilt position - Middle/Area Scan (51x91x1): Measurement grid: dx=15mm, dy=15mm

Maximum value of SAR (interpolated) = 0.340 mW/g

Tilt position - Middle/Zoom Scan (5x5x7) (5x5x7)/Cube 0: Measurement grid: dx=7.5mm, dy=7.5mm, dz=5mm

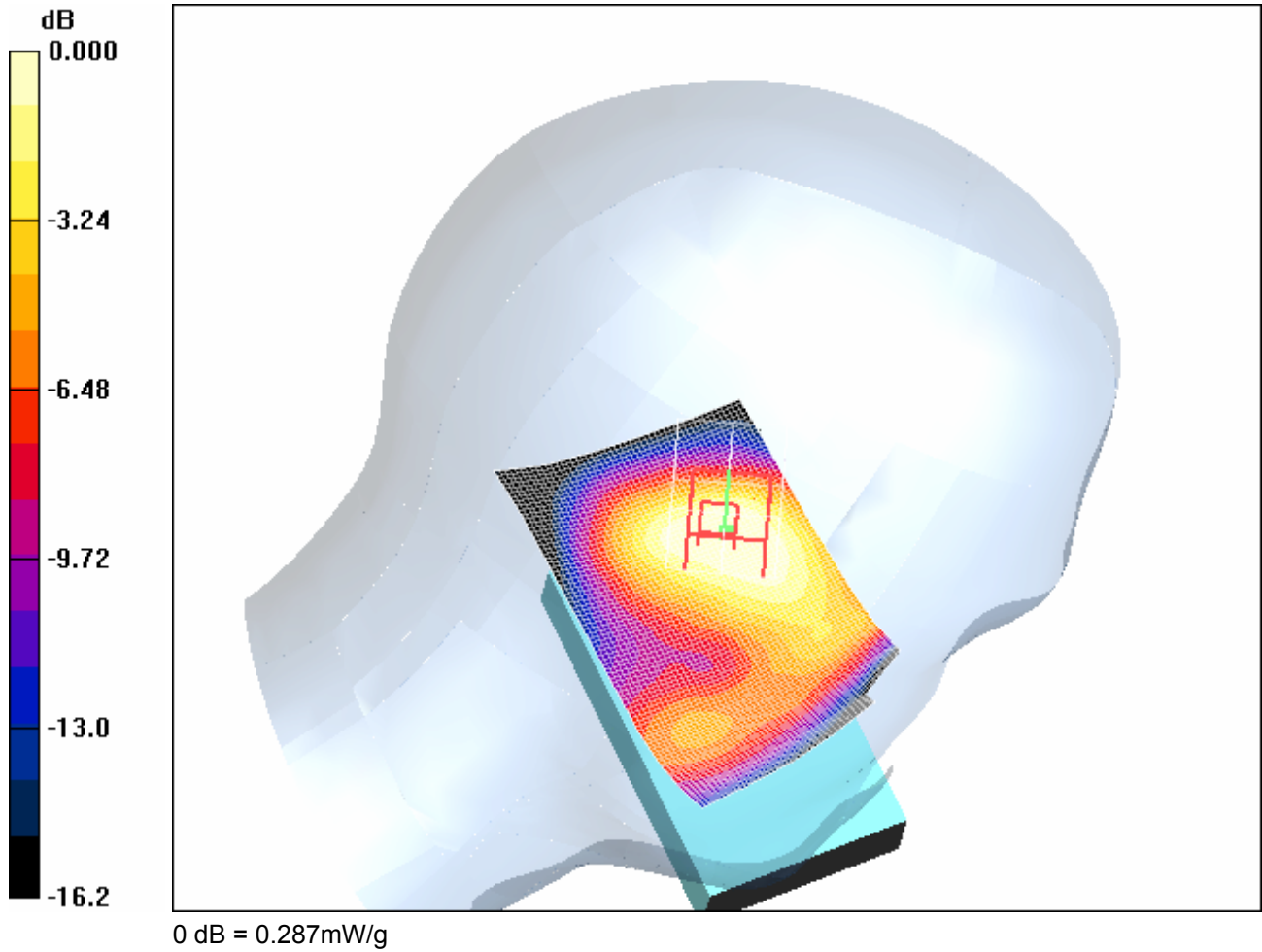
Reference Value = 13.3 V/m; Power Drift = 0.087 dB

Peak SAR (extrapolated) = 0.393 W/kg

SAR(1 g) = 0.270 mW/g; SAR(10 g) = 0.173 mW/g

Maximum value of SAR (measured) = 0.287 mW/g

RTS RIM Testing Services	Document Appendices for the BlackBerry® SmartphoneModel RBJ41GW SAR Report		Page 23(78)
	Author Data Shahriar Ninad	Dates of Test May 23-June 01, 2007	Test Report No RTS-0510-0706-03



RTS RIM Testing Services	Document Appendices for the BlackBerry® Smartphone Model RBJ41GW SAR Report		Page 24(78)
	Author Data Shahriar Ninad	Dates of Test May 23-June 01, 2007	Test Report No RTS-0510-0706-03

Date/Time: 30/05/2007 2:41:11 PM

Test Laboratory: RTS

LeftHandSide_802.11b_mid_chan_amb_temp_24_6_liq_temp_23_2C

DUT: BlackBerry Smartphone; Type: Sample ; Serial: Not Specified

Communication System: 802.11 b (2450); Frequency: 2437 MHz; Duty Cycle: 1:1

Medium parameters used (interpolated): $f = 2437$ MHz; $\sigma = 1.87$ mho/m; $\epsilon_r = 37.3$; $\rho = 1000$ kg/m³

Phantom section: Left Section

DASY4 Configuration:

- Probe: EX3DV4 - SN3548; ConvF(7.07, 7.07, 7.07); Calibrated: 19/01/2007
- Sensor-Surface: 2mm (Mechanical Surface Detection)
- Electronics: DAE3 Sn472; Calibrated: 07/03/2007
- Phantom: SAM 1; Type: SAM 4.0; Serial: 1076
- Measurement SW: DASY4, V4.7 Build 53; Postprocessing SW: SEMCAD, V1.8 Build 172

Touch position - Middle/Area Scan (61x91x1): Measurement grid: dx=15mm, dy=15mm

[Info: Interpolated medium parameters used for SAR evaluation.](#)

Maximum value of SAR (interpolated) = 0.026 mW/g

Touch position - Middle/Zoom Scan (5x5x7) (5x5x7)/Cube 0: Measurement grid: dx=7.5mm, dy=7.5mm, dz=5mm

Reference Value = 2.54 V/m; Power Drift = 0.002 dB

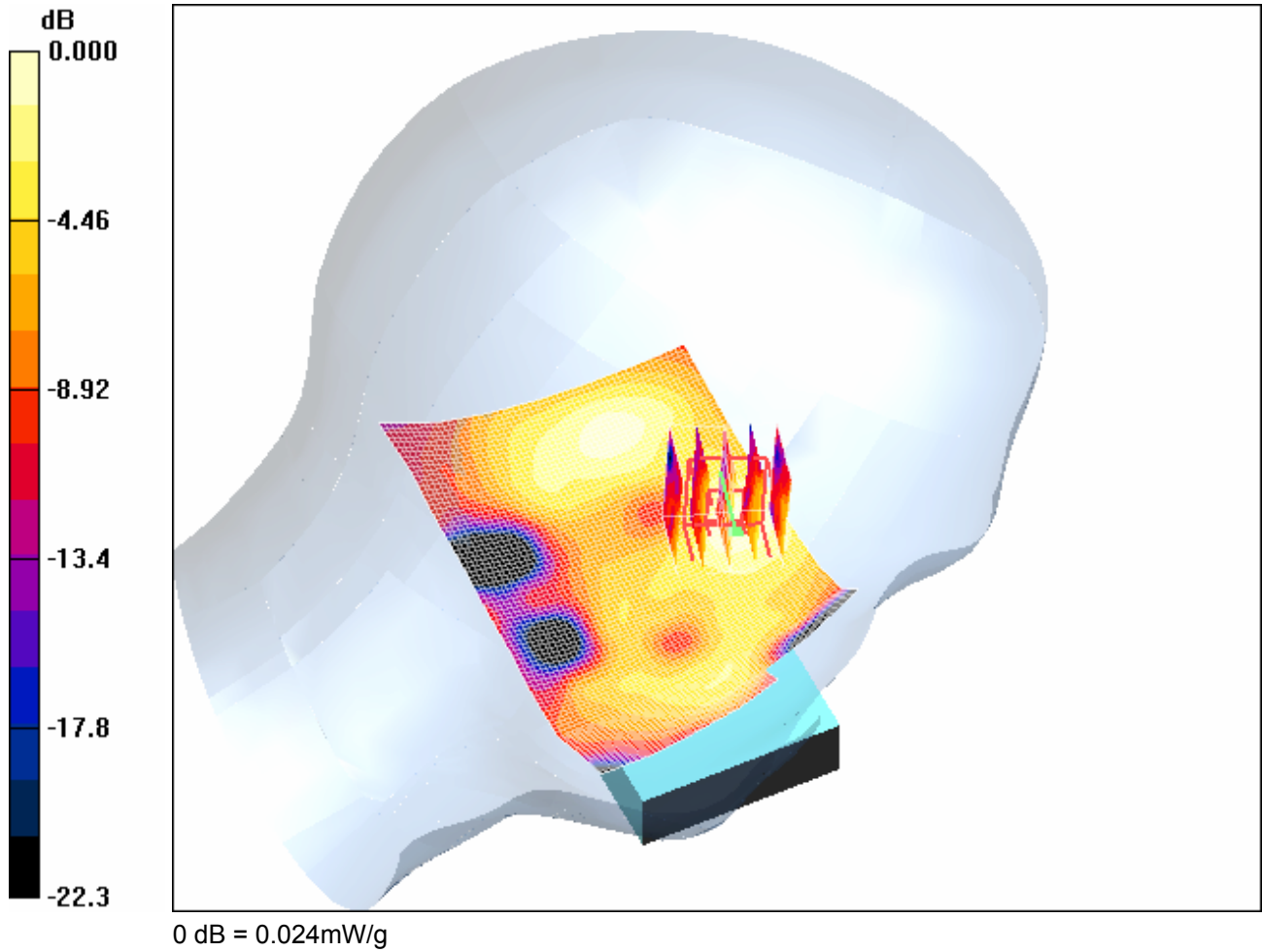
Peak SAR (extrapolated) = 0.036 W/kg

SAR(1 g) = 0.018 mW/g; SAR(10 g) = 0.00859 mW/g

[Info: Interpolated medium parameters used for SAR evaluation.](#)

Maximum value of SAR (measured) = 0.024 mW/g

RTS RIM Testing Services	Document Appendices for the BlackBerry® SmartphoneModel RBJ41GW SAR Report		Page 25(78)
	Author Data Shahriar Ninad	Dates of Test May 23-June 01, 2007	Test Report No RTS-0510-0706-03



RTS RIM Testing Services	Document Appendices for the BlackBerry® Smartphone Model RBJ41GW SAR Report		Page 26(78)
	Author Data Shahriar Ninad	Dates of Test May 23-June 01, 2007	Test Report No RTS-0510-0706-03

Date/Time: 30/05/2007 3:41:23 PM

Test Laboratory: RTS

LeftHandSide_tilt_802.11b_mid_chan_amb_temp_24_6_liq_temp_23_0C

DUT: BlackBerry Smartphone; Type: Sample ; Serial: Not Specified

Communication System: 802.11 b (2450); Frequency: 2437 MHz; Duty Cycle: 1:1
Medium parameters used (interpolated): $f = 2437$ MHz; $\sigma = 1.87$ mho/m; $\epsilon_r = 37.3$; $\rho = 1000$ kg/m³

Phantom section: Left Section

DASY4 Configuration:

- Probe: EX3DV4 - SN3548; ConvF(7.07, 7.07, 7.07); Calibrated: 19/01/2007
- Sensor-Surface: 2mm (Mechanical Surface Detection)
- Electronics: DAE3 Sn472; Calibrated: 07/03/2007
- Phantom: SAM 1; Type: SAM 4.0; Serial: 1076
- Measurement SW: DASY4, V4.7 Build 53; Postprocessing SW: SEMCAD, V1.8 Build 172

Tilt position - Middle/Area Scan (61x91x1): Measurement grid: dx=15mm, dy=15mm

[Info: Interpolated medium parameters used for SAR evaluation.](#)

Maximum value of SAR (interpolated) = 0.029 mW/g

Tilt position - Middle/Zoom Scan (5x5x7) (5x5x7)/Cube 0: Measurement grid: dx=7.5mm, dy=7.5mm, dz=5mm

Reference Value = 1.83 V/m; Power Drift = 1.83 dB

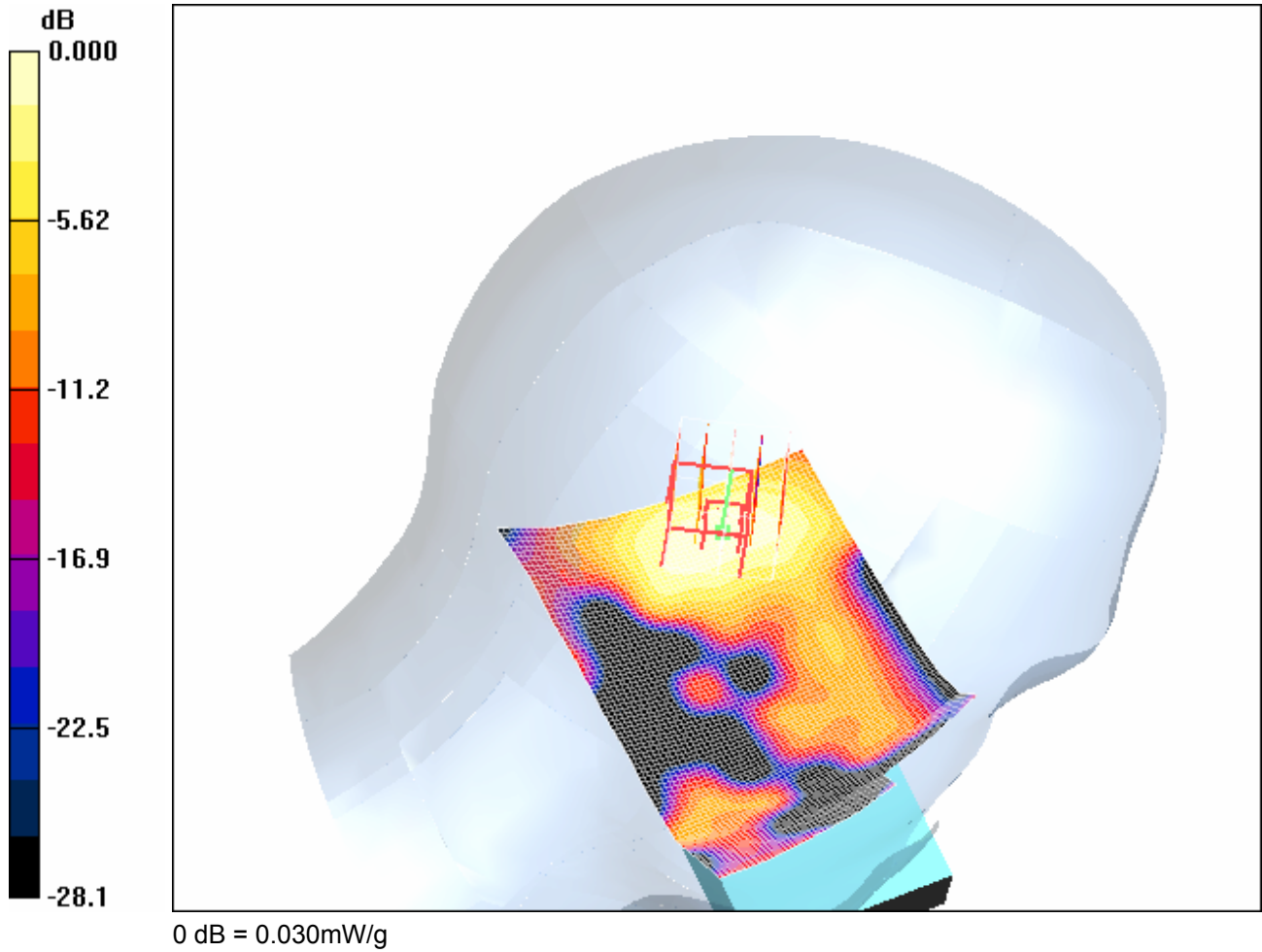
Peak SAR (extrapolated) = 0.047 W/kg

SAR(1 g) = 0.022 mW/g; SAR(10 g) = 0.011 mW/g

[Info: Interpolated medium parameters used for SAR evaluation.](#)

Maximum value of SAR (measured) = 0.030 mW/g

RTS RIM Testing Services	Document Appendices for the BlackBerry® SmartphoneModel RBJ41GW SAR Report		Page 27(78)
	Author Data Shahriar Ninad	Dates of Test May 23-June 01, 2007	Test Report No RTS-0510-0706-03



RTS RIM Testing Services	Document Appendices for the BlackBerry® Smartphone Model RBJ41GW SAR Report		Page 28(78)
	Author Data Shahriar Ninad	Dates of Test May 23-June 01, 2007	Test Report No RTS-0510-0706-03

Date/Time: 24/05/2007 6:50:17 PM

Test Laboratory: RTS

File Name: [RightHandSide_GSM850_low_chan_amb_temp_23.9_liq_temp_22.8C.da4](#)

DUT: BlackBerry Smartphone; Type: Sample ; Serial: Not Specified
Program Name: Compliance Testing: P1528 Protocol (Right-Hand Side)

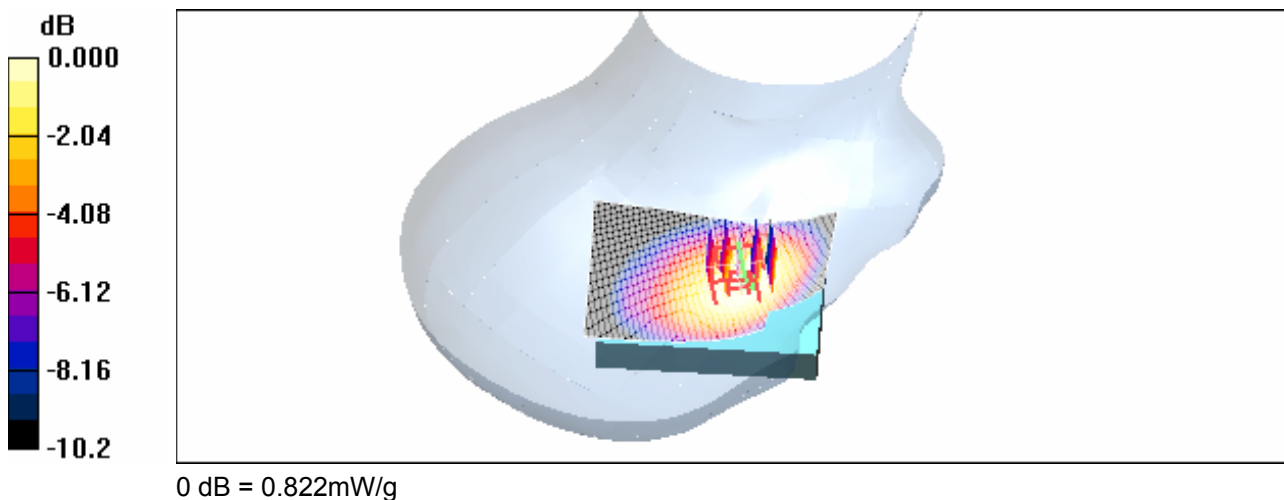
Communication System: GSM 850; Frequency: 824.2 MHz; Duty Cycle: 1:8.3
Medium parameters used: $f = 825 \text{ MHz}$; $\sigma = 0.936 \text{ mho/m}$; $\epsilon_r = 41.7$; $\rho = 1000 \text{ kg/m}^3$
Phantom section: Right Section

DASY4 Configuration:

- Probe: ET3DV6 - SN1642; ConvF(6.41, 6.41, 6.41); Calibrated: 15/01/2007
- Sensor-Surface: 4mm (Mechanical Surface Detection)
- Electronics: DAE3 Sn472; Calibrated: 07/03/2007
- Phantom: SAM 1; Type: SAM 4.0; Serial: 1076
- Measurement SW: DASY4, V4.7 Build 53; Postprocessing SW: SEMCAD, V1.8 Build 172

Touch position - Low/Area Scan (51x81x1): Measurement grid: dx=15mm, dy=15mm
Maximum value of SAR (interpolated) = 0.844 mW/g

Touch position - Low/Zoom Scan (5x5x7) (5x5x7)/Cube 0: Measurement grid: dx=7.5mm, dy=7.5mm, dz=5mm
Reference Value = 12.4 V/m; Power Drift = -0.069 dB
Peak SAR (extrapolated) = 0.991 W/kg
SAR(1 g) = 0.785 mW/g; SAR(10 g) = 0.565 mW/g
Maximum value of SAR (measured) = 0.822 mW/g



RTS RIM Testing Services	Document Appendices for the BlackBerry® Smartphone Model RBJ41GW SAR Report		Page 29(78)
	Author Data Shahriar Ninad	Dates of Test May 23-June 01, 2007	Test Report No RTS-0510-0706-03

Date/Time: 24/05/2007 6:00:30 PM

Test Laboratory: RTS

File Name: [RightHandSide_EDGE850_high_chan_amb_temp_24_0_liq_temp_23_0C.da4](#)

DUT: BlackBerry Smartphone; Type: Sample ; Serial: Not Specified
Program Name: Compliance Testing: P1528 Protocol (Right-Hand Side)

Communication System: EDGE 850; Frequency: 824.2 MHz; Duty Cycle: 1:4.2
Medium parameters used: $f = 825 \text{ MHz}$; $\sigma = 0.936 \text{ mho/m}$; $\epsilon_r = 41.7$; $\rho = 1000 \text{ kg/m}^3$
Phantom section: Right Section

DASY4 Configuration:

- Probe: ET3DV6 - SN1642; ConvF(6.41, 6.41, 6.41); Calibrated: 15/01/2007
- Sensor-Surface: 4mm (Mechanical Surface Detection)
- Electronics: DAE3 Sn472; Calibrated: 07/03/2007
- Phantom: SAM 1; Type: SAM 4.0; Serial: 1076
- Measurement SW: DASY4, V4.7 Build 53; Postprocessing SW: SEMCAD, V1.8 Build 172

Touch position - Low/Zoom Scan (5x5x7) (5x5x7)/Cube 0: Measurement grid: dx=7.5mm, dy=7.5mm, dz=5mm

Reference Value = 12.2 V/m; Power Drift = 0.014 dB

Peak SAR (extrapolated) = 1.19 W/kg

SAR(1 g) = 0.925 mW/g; SAR(10 g) = 0.672 mW/g

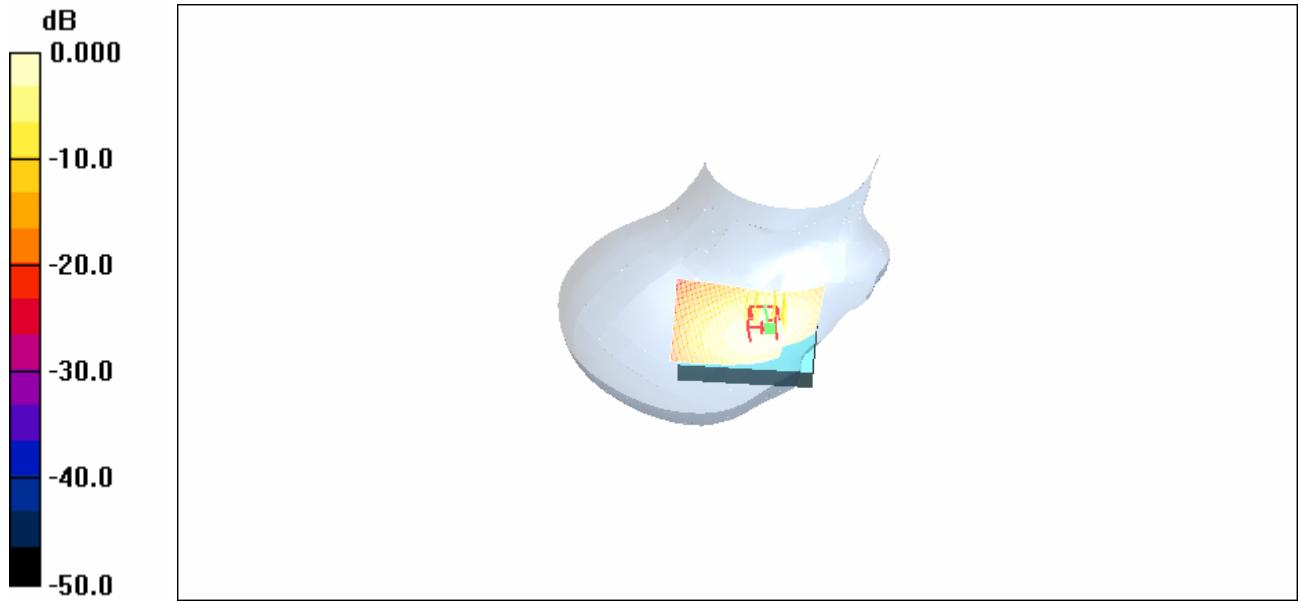
Maximum value of SAR (measured) = 0.980 mW/g

Touch position - Low/Area Scan (51x81x1): Measurement grid: dx=15mm, dy=15mm

[Info: Interpolated medium parameters used for SAR evaluation.](#)

Maximum value of SAR (interpolated) = 0.985 mW/g

RTS RIM Testing Services	Document Appendices for the BlackBerry® SmartphoneModel RBJ41GW SAR Report		Page 30(78)
	Author Data Shahriar Ninad	Dates of Test May 23-June 01, 2007	Test Report No RTS-0510-0706-03



0 dB = 0.985mW/g

RTS RIM Testing Services	Document Appendices for the BlackBerry® Smartphone Model RBJ41GW SAR Report		Page 31(78)
	Author Data Shahriar Ninad	Dates of Test May 23-June 01, 2007	Test Report No RTS-0510-0706-03

Date/Time: 24/05/2007 9:03:36 PM

Test Laboratory: RTS

File Name: [RightHandSide_tilt_EDGE850_low_chan_amb_temp_24_1_liq_temp_23_0C.da4](#)

DUT: BlackBerry Smartphone; Type: Sample ; Serial: Not Specified
Program Name: Compliance Testing: P1528 Protocol (Right-Hand Side)

Communication System: GPRS 850; Frequency: 824.2 MHz; Duty Cycle: 1:4.2
Medium parameters used: $f = 825 \text{ MHz}$; $\sigma = 0.936 \text{ mho/m}$; $\epsilon_r = 41.7$; $\rho = 1000 \text{ kg/m}^3$
Phantom section: Right Section

DASY4 Configuration:

- Probe: ET3DV6 - SN1642; ConvF(6.41, 6.41, 6.41); Calibrated: 15/01/2007
- Sensor-Surface: 4mm (Mechanical Surface Detection)
- Electronics: DAE3 Sn472; Calibrated: 07/03/2007
- Phantom: SAM 1; Type: SAM 4.0; Serial: 1076
- Measurement SW: DASY4, V4.7 Build 53; Postprocessing SW: SEMCAD, V1.8 Build 172

Tilt position - Low/Area Scan (51x81x1): Measurement grid: $dx=15\text{mm}$, $dy=15\text{mm}$
Maximum value of SAR (interpolated) = 0.463 mW/g

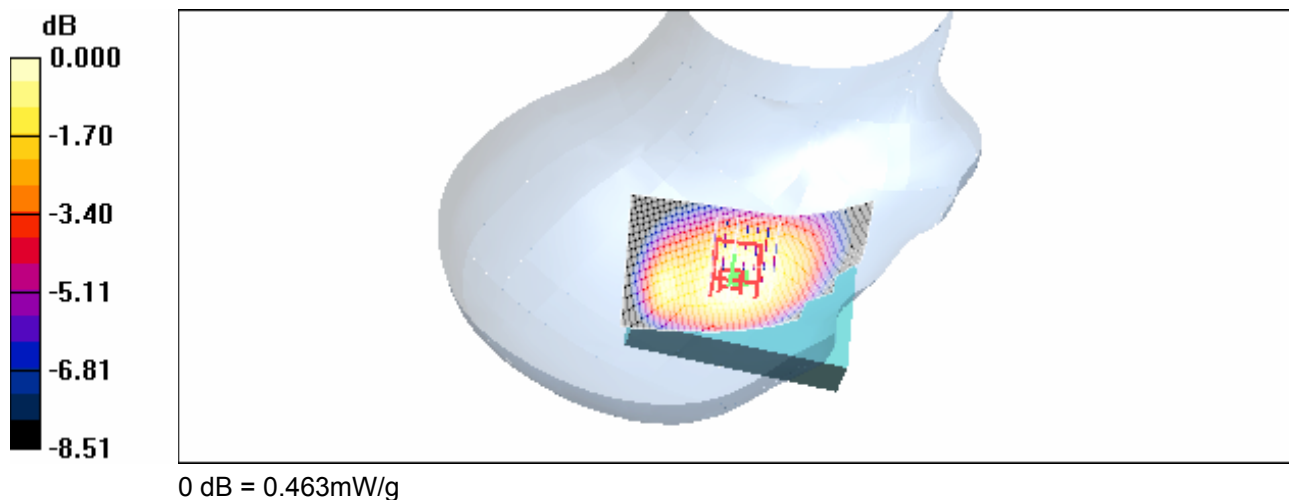
Tilt position - Low/Zoom Scan (5x5x7) (7x7x7)/Cube 0: Measurement grid: $dx=5\text{mm}$, $dy=5\text{mm}$, $dz=5\text{mm}$

Reference Value = 17.4 V/m; Power Drift = 0.107 dB

Peak SAR (extrapolated) = 0.560 W/kg

SAR(1 g) = 0.434 mW/g; SAR(10 g) = 0.325 mW/g

Maximum value of SAR (measured) = 0.463 mW/g



RTS RIM Testing Services	Document Appendices for the BlackBerry® Smartphone Model RBJ41GW SAR Report		Page 32(78)
	Author Data Shahriar Ninad	Dates of Test May 23-June 01, 2007	Test Report No RTS-0510-0706-03

Date/Time: 29/05/2007 9:33:15 AM

Test Laboratory: RTS

RightHandSide_GSM1900_low_chan_amb_temp_24_1_liq_temp_23_3C

DUT: BlackBerry Smartphone; Type: Sample ; Serial: Not Specified

Communication System: GSM 1900; Frequency: 1850.2 MHz; Duty Cycle: 1:8.3

Medium parameters used (interpolated): $f = 1850.2$ MHz; $\sigma = 1.39$ mho/m; $\epsilon_r = 38.5$; $\rho = 1000$ kg/m³

Phantom section: Right Section

DASY4 Configuration:

- Probe: ET3DV6 - SN1642; ConvF(5.28, 5.28, 5.28); Calibrated: 15/01/2007
- Sensor-Surface: 4mm (Mechanical Surface Detection)
- Electronics: DAE3 Sn472; Calibrated: 07/03/2007
- Phantom: SAM 1; Type: SAM 4.0; Serial: 1076
- Measurement SW: DASY4, V4.7 Build 53; Postprocessing SW: SEMCAD, V1.8 Build 172

Touch position - Low/Zoom Scan (5x5x7) (5x5x7)/Cube 0: Measurement grid: dx=7.5mm, dy=7.5mm, dz=5mm

Reference Value = 7.53 V/m; Power Drift = -0.032 dB

Peak SAR (extrapolated) = 1.60 W/kg

SAR(1 g) = 1.07 mW/g; SAR(10 g) = 0.605 mW/g

[Info: Interpolated medium parameters used for SAR evaluation.](#)

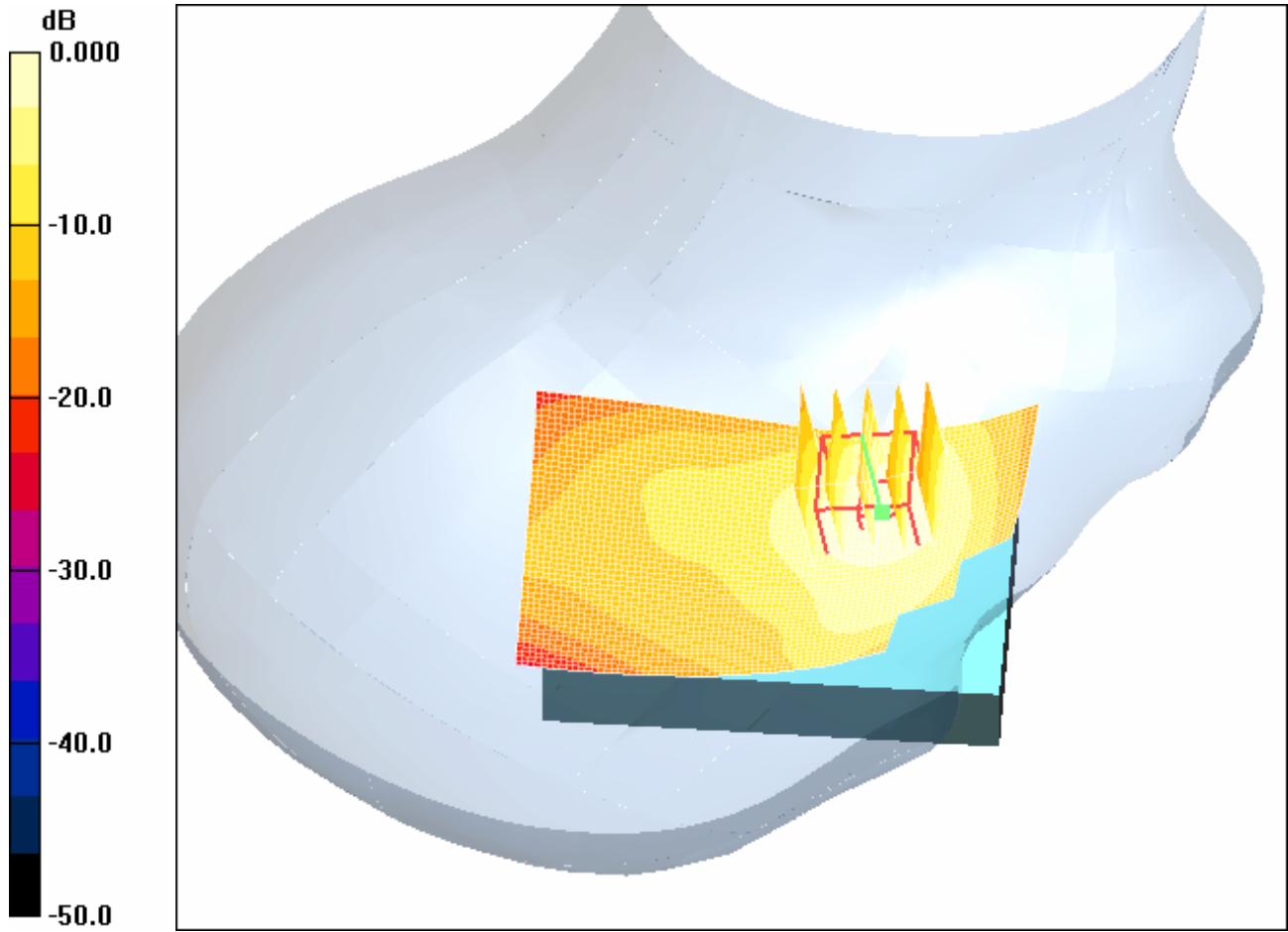
Maximum value of SAR (measured) = 1.21 mW/g

Touch position - Low /Area Scan (51x81x1): Measurement grid: dx=15mm, dy=15mm

[Info: Interpolated medium parameters used for SAR evaluation.](#)

Maximum value of SAR (interpolated) = 1.01 mW/g

RTS RIM Testing Services	Document Appendices for the BlackBerry® SmartphoneModel RBJ41GW SAR Report		Page 33(78)
	Author Data Shahriar Ninad	Dates of Test May 23-June 01, 2007	Test Report No RTS-0510-0706-03



0 dB = 1.01mW/g

RTS RIM Testing Services	Document Appendices for the BlackBerry® Smartphone Model RBJ41GW SAR Report		Page 34(78)
	Author Data Shahriar Ninad	Dates of Test May 23-June 01, 2007	Test Report No RTS-0510-0706-03

Date/Time: 29/05/2007 9:48:22 AM

Test Laboratory: RTS

RightHandSide_Tilt_GSM1900_low_chan_amb_temp_23_8_liq_temp_23_1C

DUT: BlackBerry Smartphone; Type: Sample ; Serial: Not Specified

Communication System: GSM 1900; Frequency: 1850.2 MHz; Duty Cycle: 1:8.3

Medium parameters used (interpolated): $f = 1850.2$ MHz; $\sigma = 1.39$ mho/m; $\epsilon_r = 38.5$; $\rho = 1000$ kg/m³

Phantom section: Right Section

DASY4 Configuration:

- Probe: ET3DV6 - SN1642; ConvF(5.28, 5.28, 5.28); Calibrated: 15/01/2007
- Sensor-Surface: 4mm (Mechanical Surface Detection)
- Electronics: DAE3 Sn472; Calibrated: 07/03/2007
- Phantom: SAM 1; Type: SAM 4.0; Serial: 1076
- Measurement SW: DASY4, V4.7 Build 53; Postprocessing SW: SEMCAD, V1.8 Build 172

Tilt position - Low/Area Scan (51x81x1): Measurement grid: dx=15mm, dy=15mm

[Info: Interpolated medium parameters used for SAR evaluation.](#)

Maximum value of SAR (interpolated) = 0.270 mW/g

Tilt position - Low/Zoom Scan (5x5x7) (5x5x7)/Cube 0: Measurement grid: dx=7.5mm, dy=7.5mm, dz=5mm

Reference Value = 14.6 V/m; Power Drift = -0.010 dB

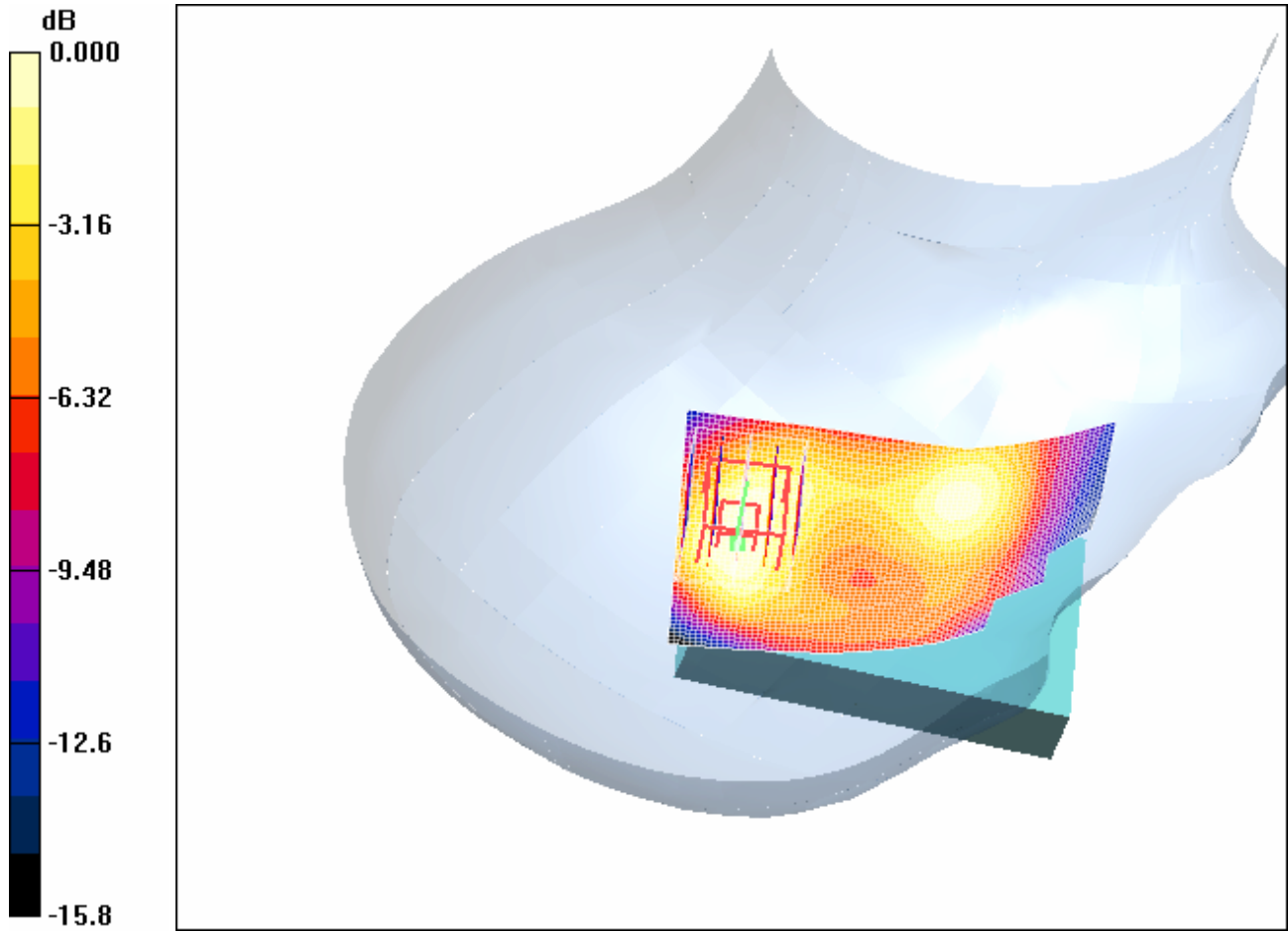
Peak SAR (extrapolated) = 0.341 W/kg

SAR(1 g) = 0.238 mW/g; SAR(10 g) = 0.145 mW/g

[Info: Interpolated medium parameters used for SAR evaluation.](#)

Maximum value of SAR (measured) = 0.258 mW/g

RTS RIM Testing Services	Document Appendices for the BlackBerry® SmartphoneModel RBJ41GW SAR Report		Page 35(78)
	Author Data Shahriar Ninad	Dates of Test May 23-June 01, 2007	Test Report No RTS-0510-0706-03



0 dB = 0.258mW/g

RTS RIM Testing Services	Document Appendices for the BlackBerry® Smartphone Model RBJ41GW SAR Report		Page 36(78)
	Author Data Shahriar Ninad	Dates of Test May 23-June 01, 2007	Test Report No RTS-0510-0706-03

Date/Time: 29/05/2007 9:09:34 AM

Test Laboratory: RTS

RightHandSide_EDGE1900_low_chan_amb_temp_24_2_liq_temp_23_2C

DUT: BlackBerry Smartphone; Type: Sample ; Serial: Not Specified

Communication System: EDGE 1900; Frequency: 1850.2 MHz; Duty Cycle: 1:4.2

Medium parameters used (interpolated): $f = 1850.2$ MHz; $\sigma = 1.39$ mho/m; $\epsilon_r = 38.5$; $\rho = 1000$ kg/m³

Phantom section: Right Section

DASY4 Configuration:

- Probe: ET3DV6 - SN1642; ConvF(5.28, 5.28, 5.28); Calibrated: 15/01/2007
- Sensor-Surface: 4mm (Mechanical Surface Detection)
- Electronics: DAE3 Sn472; Calibrated: 07/03/2007
- Phantom: SAM 1; Type: SAM 4.0; Serial: 1076
- Measurement SW: DASY4, V4.7 Build 53; Postprocessing SW: SEMCAD, V1.8 Build 172

Touch position - Low/Zoom Scan (5x5x7) (5x5x7)/Cube 0: Measurement grid: dx=7.5mm, dy=7.5mm, dz=5mm

Reference Value = 7.96 V/m; Power Drift = -0.103 dB

Peak SAR (extrapolated) = 1.45 W/kg

SAR(1 g) = 0.989 mW/g; SAR(10 g) = 0.563 mW/g

[Info: Interpolated medium parameters used for SAR evaluation.](#)

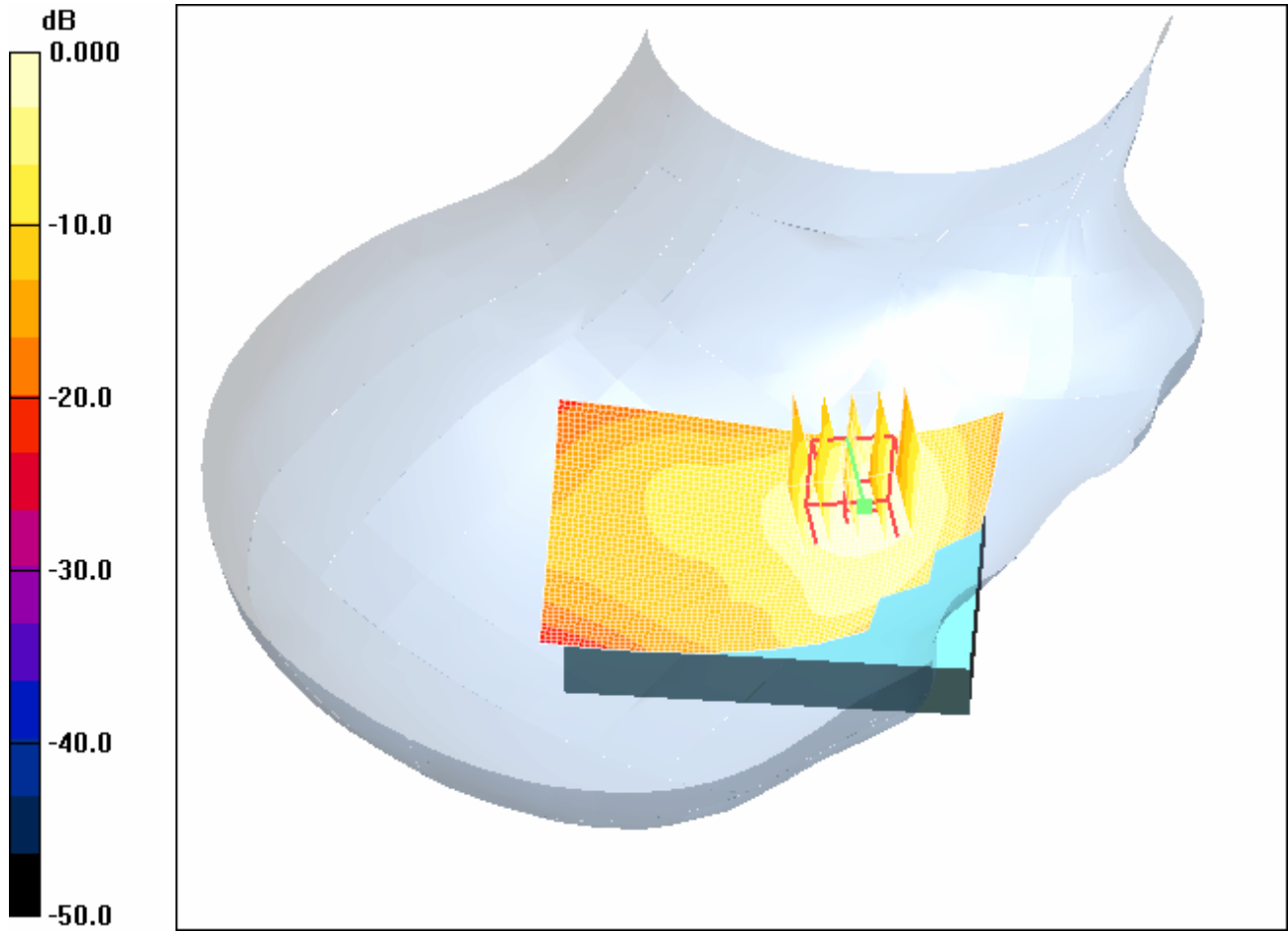
Maximum value of SAR (measured) = 1.11 mW/g

Touch position - Low /Area Scan (51x81x1): Measurement grid: dx=15mm, dy=15mm

[Info: Interpolated medium parameters used for SAR evaluation.](#)

Maximum value of SAR (interpolated) = 0.940 mW/g

RTS RIM Testing Services	Document Appendices for the BlackBerry® SmartphoneModel RBJ41GW SAR Report		Page 37(78)
	Author Data Shahriar Ninad	Dates of Test May 23-June 01, 2007	Test Report No RTS-0510-0706-03



0 dB = 0.940mW/g

RTS RIM Testing Services	Document Appendices for the BlackBerry® Smartphone Model RBJ41GW SAR Report		Page 38(78)
	Author Data Shahriar Ninad	Dates of Test May 23-June 01, 2007	Test Report No RTS-0510-0706-03

Date/Time: 30/05/2007 1:56:51 PM

Test Laboratory: RTS

RightHandSide_802.11b_mid_chan_amb_temp_24_7_liq_temp_23_5C

DUT: BlackBerry Smartphone; Type: Sample ; Serial: Not Specified

Communication System: 802.11 b (2450); Frequency: 2437 MHz; Duty Cycle: 1:1
Medium parameters used (interpolated): $f = 2437$ MHz; $\sigma = 1.87$ mho/m; $\epsilon_r = 37.3$; $\rho = 1000$ kg/m³

Phantom section: Right Section

DASY4 Configuration:

- Probe: EX3DV4 - SN3548; ConvF(7.07, 7.07, 7.07); Calibrated: 19/01/2007
- Sensor-Surface: 2mm (Mechanical Surface Detection)
- Electronics: DAE3 Sn472; Calibrated: 07/03/2007
- Phantom: SAM 1; Type: SAM 4.0; Serial: 1076
- Measurement SW: DASY4, V4.7 Build 53; Postprocessing SW: SEMCAD, V1.8 Build 172

Touch position - Middle/Area Scan (61x91x1): Measurement grid: dx=15mm, dy=15mm

[Info: Interpolated medium parameters used for SAR evaluation.](#)

Maximum value of SAR (interpolated) = 0.019 mW/g

Touch position - Middle/Zoom Scan (5x5x7) (5x5x7)/Cube 0: Measurement grid: dx=7.5mm, dy=7.5mm, dz=5mm

Reference Value = 2.11 V/m; Power Drift = 0.265 dB

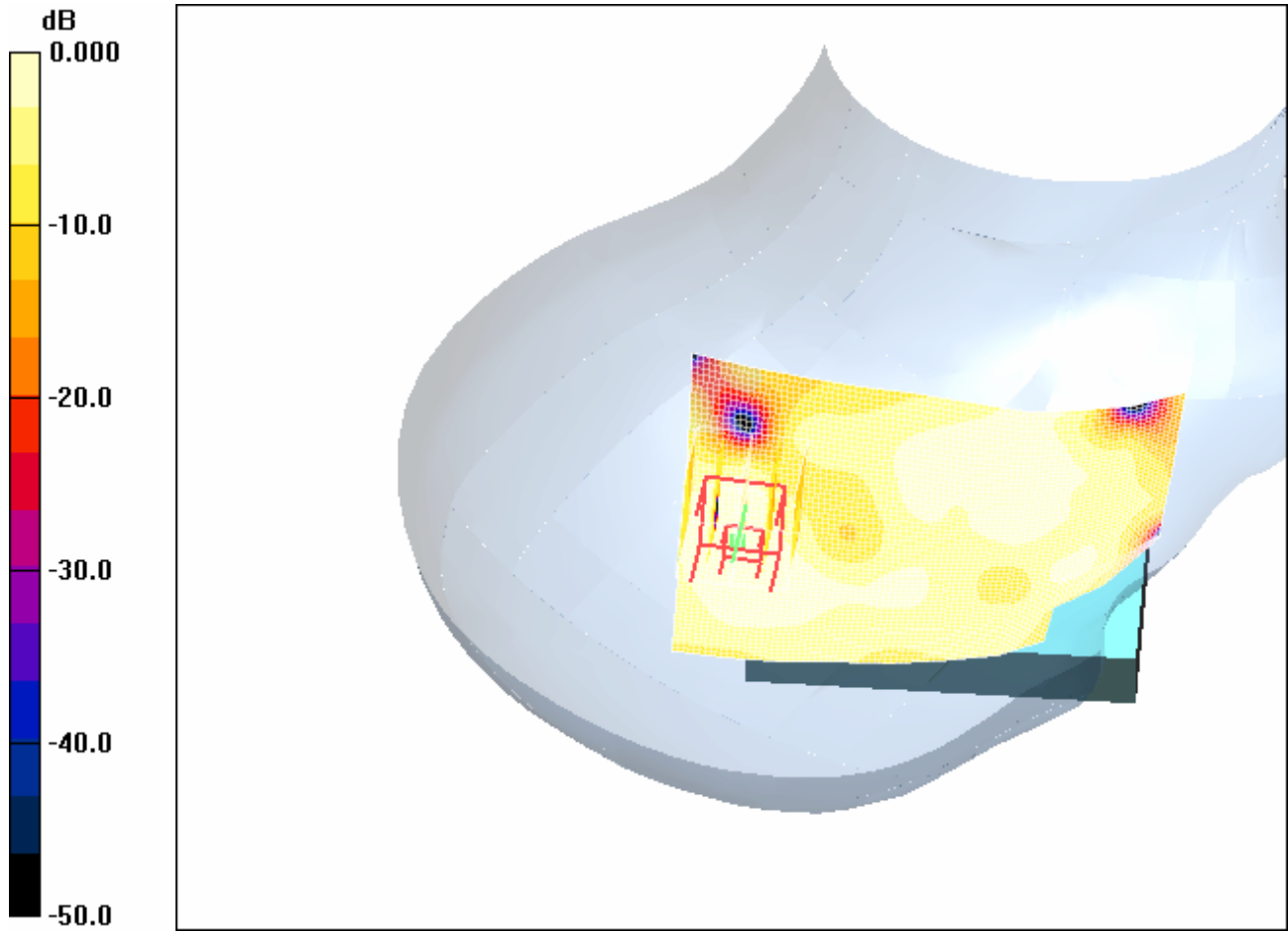
Peak SAR (extrapolated) = 0.025 W/kg

SAR(1 g) = 0.014 mW/g; SAR(10 g) = 0.00789 mW/g

[Info: Interpolated medium parameters used for SAR evaluation.](#)

Maximum value of SAR (measured) = 0.019 mW/g

RTS RIM Testing Services	Document Appendices for the BlackBerry® SmartphoneModel RBJ41GW SAR Report		Page 39(78)
	Author Data Shahriar Ninad	Dates of Test May 23-June 01, 2007	Test Report No RTS-0510-0706-03



0 dB = 0.019mW/g

RTS RIM Testing Services	Document Appendices for the BlackBerry® Smartphone Model RBJ41GW SAR Report		Page 40(78)
	Author Data Shahriar Ninad	Dates of Test May 23-June 01, 2007	Test Report No RTS-0510-0706-03

Date/Time: 30/05/2007 2:23:49 PM

Test Laboratory: RTS

RightHandSide_Tilt_802.11b_mid_chan_amb_temp_24_6_liq_temp_23_3C

DUT: BlackBerry Smartphone; Type: Sample ; Serial: Not Specified

Communication System: 802.11 b (2450); Frequency: 2437 MHz; Duty Cycle: 1:1
Medium parameters used (interpolated): $f = 2437$ MHz; $\sigma = 1.87$ mho/m; $\epsilon_r = 37.3$; $\rho = 1000$ kg/m³

Phantom section: Right Section

DASY4 Configuration:

- Probe: EX3DV4 - SN3548; ConvF(7.07, 7.07, 7.07); Calibrated: 19/01/2007
- Sensor-Surface: 2mm (Mechanical Surface Detection)
- Electronics: DAE3 Sn472; Calibrated: 07/03/2007
- Phantom: SAM 1; Type: SAM 4.0; Serial: 1076
- Measurement SW: DASY4, V4.7 Build 53; Postprocessing SW: SEMCAD, V1.8 Build 172

Tilt position - Middle/Zoom Scan (5x5x7) (5x5x7)/Cube 0: Measurement grid: dx=7.5mm, dy=7.5mm, dz=5mm

Reference Value = 2.24 V/m; Power Drift = 0.303 dB

Peak SAR (extrapolated) = 0.037 W/kg

SAR(1 g) = 0.020 mW/g; SAR(10 g) = 0.011 mW/g

[Info: Interpolated medium parameters used for SAR evaluation.](#)

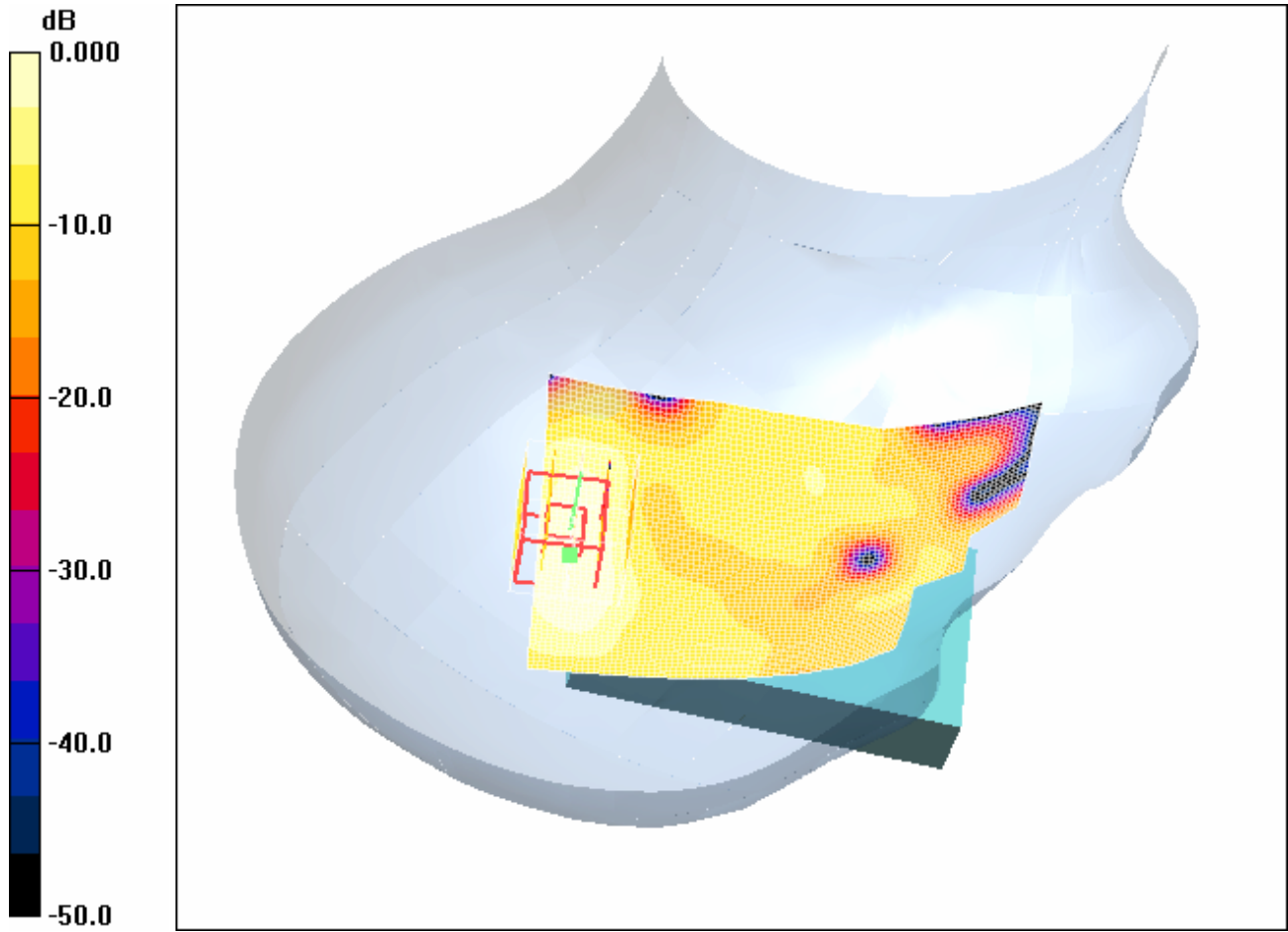
Maximum value of SAR (measured) = 0.027 mW/g

Tilt position - Middle/Area Scan (61x91x1): Measurement grid: dx=15mm, dy=15mm

[Info: Interpolated medium parameters used for SAR evaluation.](#)

Maximum value of SAR (interpolated) = 0.030 mW/g

RTS RIM Testing Services	Document Appendices for the BlackBerry® SmartphoneModel RBJ41GW SAR Report		Page 41(78)
	Author Data Shahriar Ninad	Dates of Test May 23-June 01, 2007	Test Report No RTS-0510-0706-03

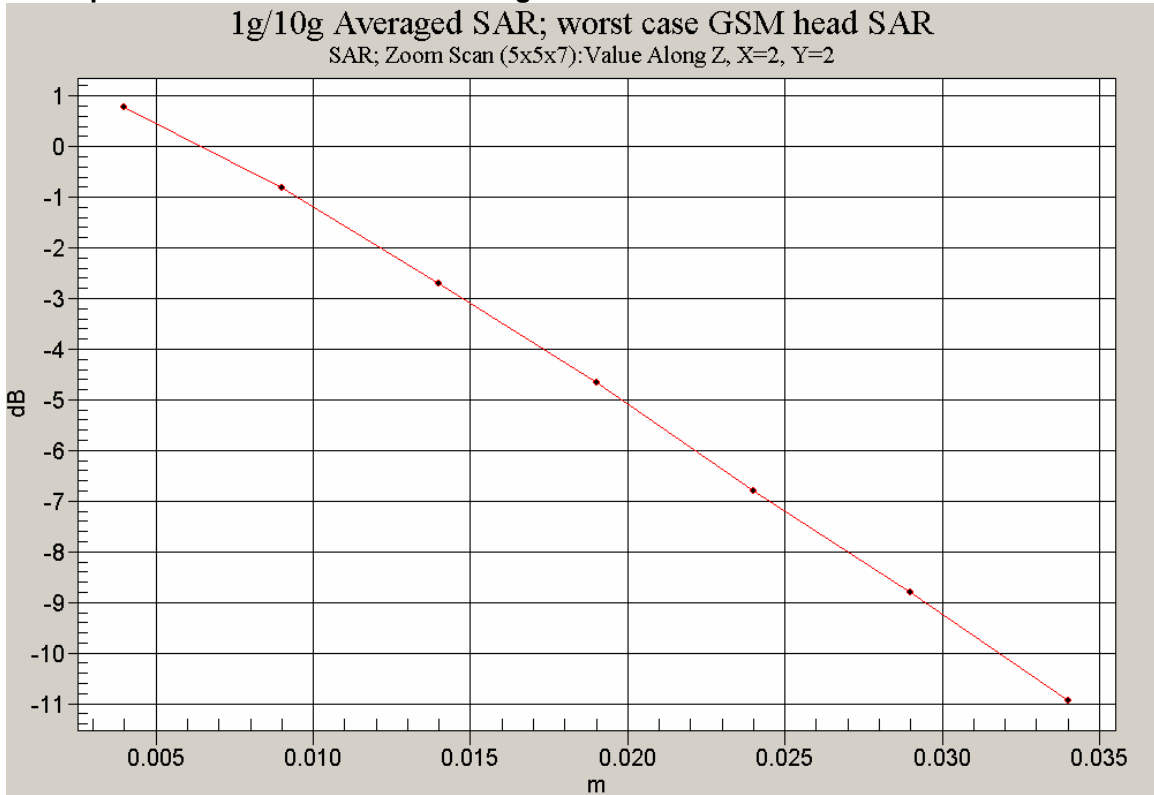


0 dB = 0.030mW/g

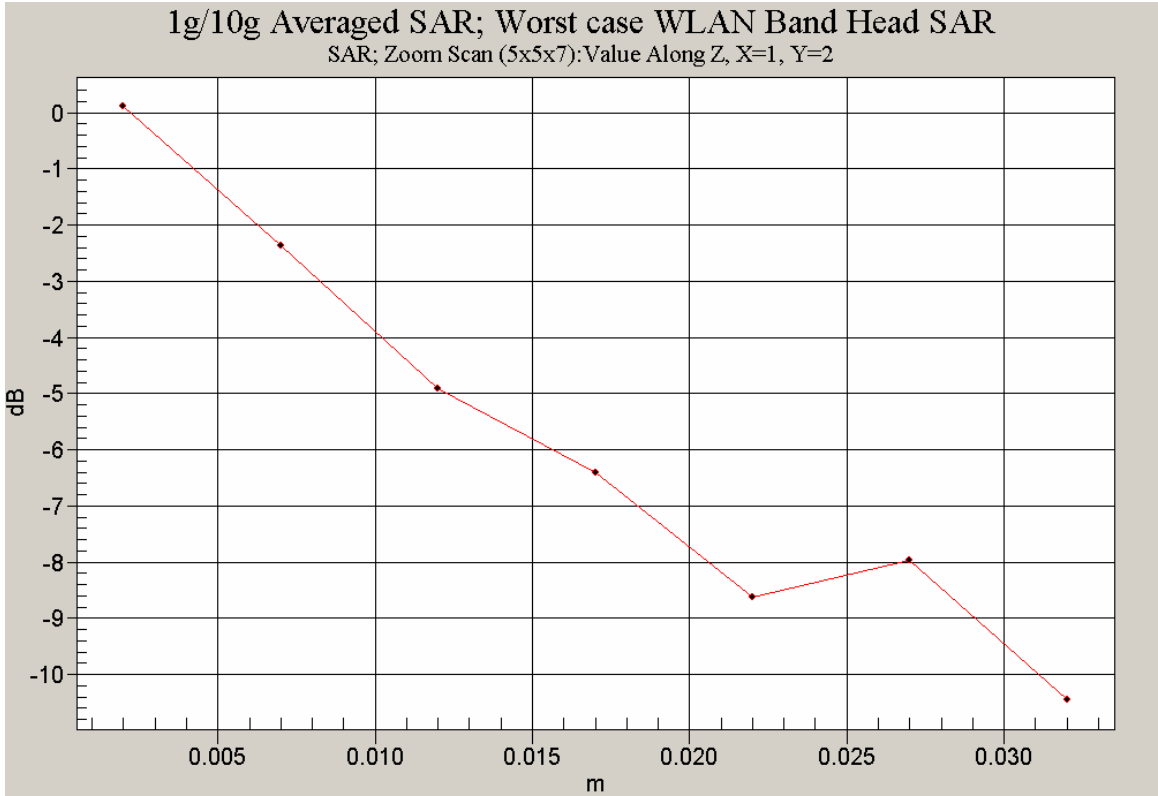
RTS RIM Testing Services	Document Appendices for the BlackBerry® SmartphoneModel RBJ41GW SAR Report		Page 42(78)
	Author Data Shahriar Ninad	Dates of Test May 23-June 01, 2007	Test Report No RTS-0510-0706-03

Test Laboratory: RTS

Z axis plot for the worst case head configuration:



RTS RIM Testing Services	Document Appendices for the BlackBerry® Smartphone Model RBJ41GW SAR Report		Page 43(78)
	Author Data Shahriar Ninad	Dates of Test May 23-June 01, 2007	Test Report No RTS-0510-0706-03



RTS RIM Testing Services	Document Appendices for the BlackBerry® Smartphone Model RBJ41GW SAR Report		Page 44(78)
Author Data Shahriar Ninad	Dates of Test May 23-June 01, 2007	Test Report No RTS-0510-0706-03	FCC ID: L6ARBJ40GW

APPENDIX C: SAR DISTRIBUTION PLOTS FOR BODY-WORN CONFIGURATION

RTS RIM Testing Services	Document Appendices for the BlackBerry® Smartphone Model RBJ41GW SAR Report		Page 45(78)
	Author Data Shahriar Ninad	Dates of Test May 23-June 01, 2007	Test Report No RTS-0510-0706-03

Date/Time: 28/05/2007 12:48:35 PM

Test Laboratory: RTS

Body_Holster1_Back_GPRS850_Mid_Chan_Amb_Tem_24_1_Liq_Tem_23_2C

DUT: BlackBerry Smartphone; Type: Sample ; Serial: Not Specified

Communication System: GPRS 850; Frequency: 836.8 MHz; Duty Cycle: 1:4.2
Medium parameters used (interpolated): $f = 836.8$ MHz; $\sigma = 0.95$ mho/m; $\epsilon_r = 53.2$; $\rho = 1000$ kg/m³
Phantom section: Flat Section

DASY4 Configuration:

- Probe: ET3DV6 - SN1642; ConvF(6.16, 6.16, 6.16); Calibrated: 15/01/2007
- Sensor-Surface: 4mm (Mechanical Surface Detection)
- Electronics: DAE3 Sn472; Calibrated: 07/03/2007
- Phantom: SAM 2; Type: SAM 4.0; Serial: 1080
- Measurement SW: DASY4, V4.7 Build 53; Postprocessing SW: SEMCAD, V1.8 Build 172

Middle/Area Scan (51x81x1): Measurement grid: dx=15mm, dy=15mm

[Info: Interpolated medium parameters used for SAR evaluation.](#)

Maximum value of SAR (interpolated) = 0.632 mW/g

Middle/Zoom Scan (5x5x7) (5x5x7)/Cube 0: Measurement grid: dx=7.5mm, dy=7.5mm, dz=5mm

Reference Value = 26.2 V/m; Power Drift = -0.027 dB

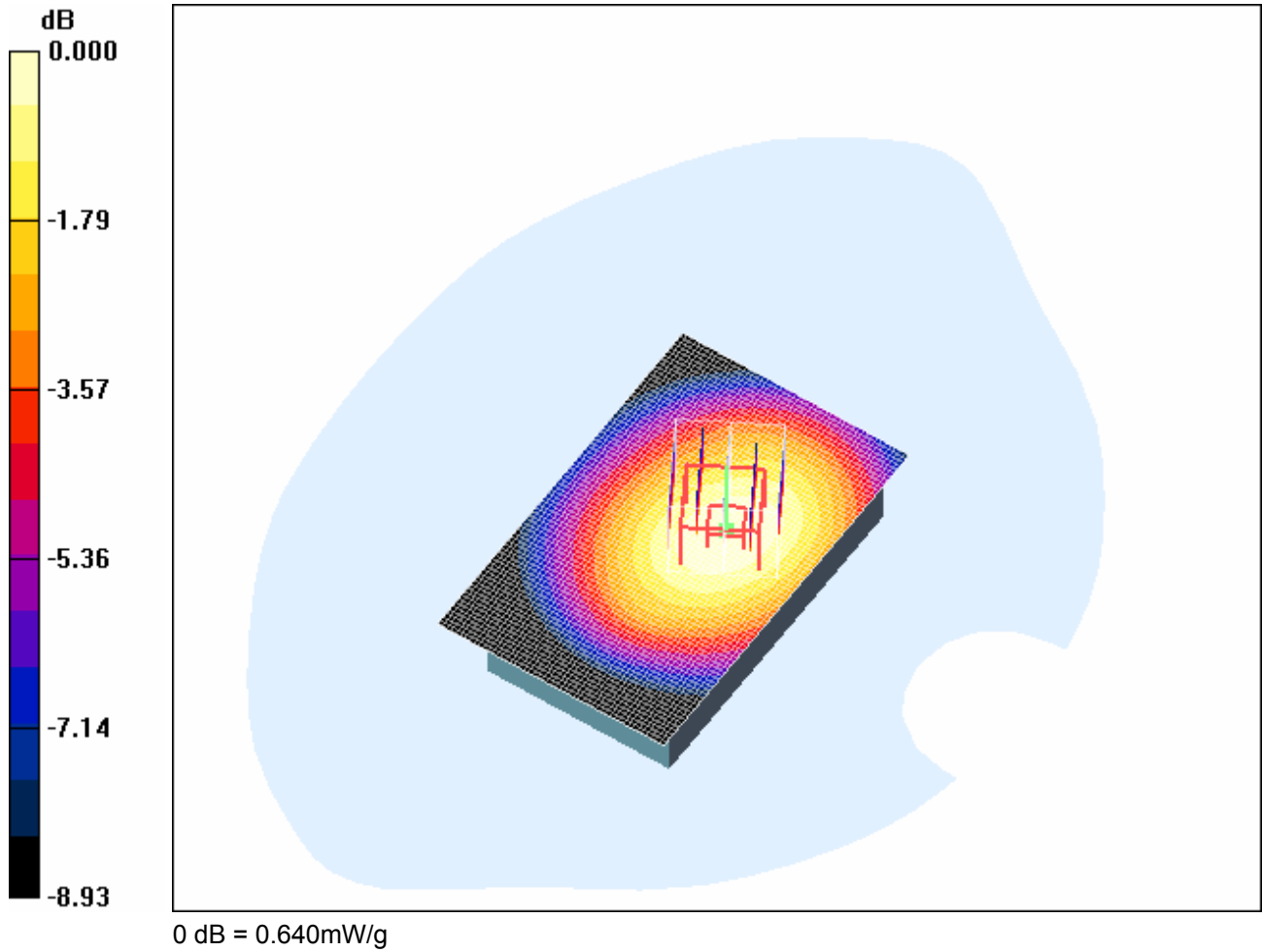
Peak SAR (extrapolated) = 0.764 W/kg

SAR(1 g) = 0.600 mW/g; SAR(10 g) = 0.437 mW/g

[Info: Interpolated medium parameters used for SAR evaluation.](#)

Maximum value of SAR (measured) = 0.640 mW/g

RTS RIM Testing Services	Document Appendices for the BlackBerry® SmartphoneModel RBJ41GW SAR Report		Page 46(78)
	Author Data Shahriar Ninad	Dates of Test May 23-June 01, 2007	Test Report No RTS-0510-0706-03



RTS RIM Testing Services	Document Appendices for the BlackBerry® Smartphone Model RBJ41GW SAR Report		Page 47(78)
	Author Data Shahriar Ninad	Dates of Test May 23-June 01, 2007	Test Report No RTS-0510-0706-03

Date/Time: 28/05/2007 6:50:22 PM

Test Laboratory: RTS

File Name: [Body_Holster4_Back_GPRS850_Mid_Chan_Amb_Tem_24_3_Liq_Tem_22_9C.da4](#)

DUT: BlackBerry Smartphone; Type: Sample ; Serial: Not Specified
Program Name: Compliance Testing: P1528 Protocol

Communication System: GPRS 850; Frequency: 836.8 MHz; Duty Cycle: 1:4.2
Medium parameters used (interpolated): $f = 836.8 \text{ MHz}$; $\sigma = 0.95 \text{ mho/m}$; $\epsilon_r = 53.2$; $\rho = 1000 \text{ kg/m}^3$
Phantom section: Flat Section

DASY4 Configuration:

- Probe: ET3DV6 - SN1642; ConvF(6.16, 6.16, 6.16); Calibrated: 15/01/2007
- Sensor-Surface: 4mm (Mechanical Surface Detection)
- Electronics: DAE3 Sn472; Calibrated: 07/03/2007
- Phantom: SAM 2; Type: SAM 4.0; Serial: 1080
- Measurement SW: DASY4, V4.7 Build 53; Postprocessing SW: SEMCAD, V1.8 Build 172

Mid/Area Scan (51x81x1): Measurement grid: $dx=15\text{mm}$, $dy=15\text{mm}$

[Info: Interpolated medium parameters used for SAR evaluation.](#)

Maximum value of SAR (interpolated) = 0.737 mW/g

Mid/Zoom Scan (5x5x7) (5x5x7)/Cube 0: Measurement grid: $dx=7.5\text{mm}$, $dy=7.5\text{mm}$, $dz=5\text{mm}$

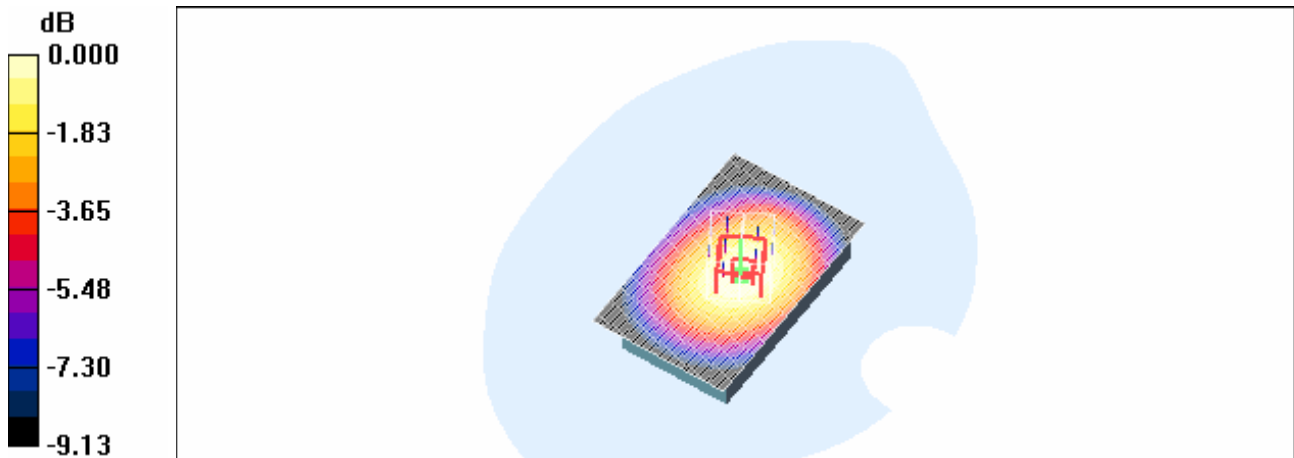
Reference Value = 29.0 V/m; Power Drift = -0.054 dB

Peak SAR (extrapolated) = 0.896 W/kg

SAR(1 g) = 0.697 mW/g; SAR(10 g) = 0.506 mW/g

[Info: Interpolated medium parameters used for SAR evaluation.](#)

Maximum value of SAR (measured) = 0.736 mW/g



RTS RIM Testing Services	Document Appendices for the BlackBerry® Smartphone Model RBJ41GW SAR Report		Page 48(78)
	Author Data Shahriar Ninad	Dates of Test May 23-June 01, 2007	Test Report No RTS-0510-0706-03

Date/Time: 28/05/2007 7:07:29 PM

Test Laboratory: RTS

File Name: [Body_Holster6_Back_GPRS850_Mid_Chan_Amb_Tem_24_4_Liq_Tem_22_9C.da4](#)

DUT: BlackBerry Smartphone; Type: Sample ; Serial: Not Specified
Program Name: Compliance Testing: P1528 Protocol

Communication System: GPRS 850; Frequency: 836.8 MHz; Duty Cycle: 1:4.2
Medium parameters used (interpolated): $f = 836.8 \text{ MHz}$; $\sigma = 0.95 \text{ mho/m}$; $\epsilon_r = 53.2$; $\rho = 1000 \text{ kg/m}^3$
Phantom section: Flat Section

DASY4 Configuration:

- Probe: ET3DV6 - SN1642; ConvF(6.16, 6.16, 6.16); Calibrated: 15/01/2007
 - Sensor-Surface: 4mm (Mechanical Surface Detection)
 - Electronics: DAE3 Sn472; Calibrated: 07/03/2007
 - Phantom: SAM 2; Type: SAM 4.0; Serial: 1080
 - Measurement SW: DASY4, V4.7 Build 53; Postprocessing SW: SEMCAD, V1.8 Build 172
- Mid/Area Scan (51x81x1):** Measurement grid: $dx=15\text{mm}$, $dy=15\text{mm}$

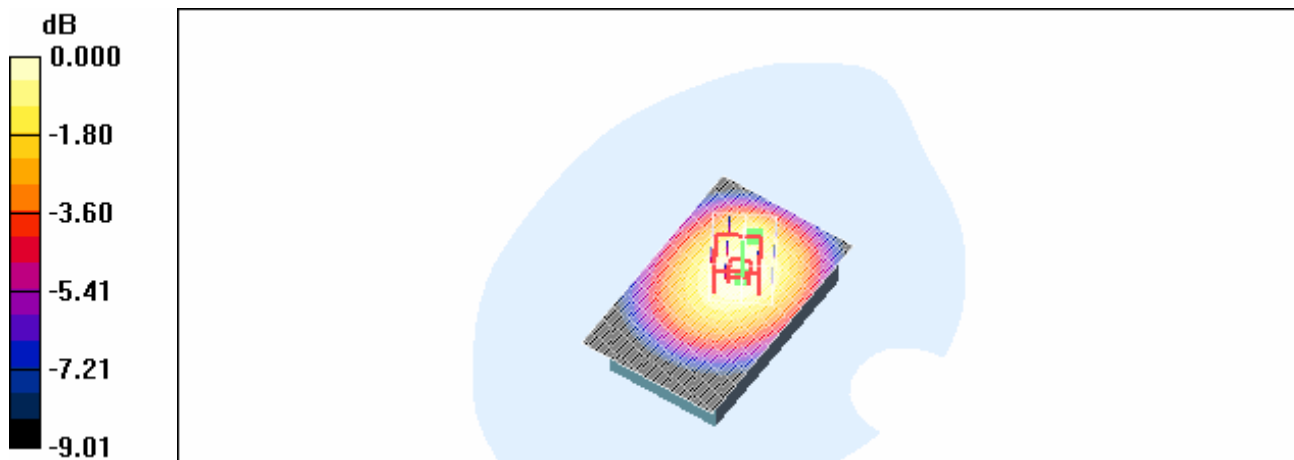
[Info: Interpolated medium parameters used for SAR evaluation.](#)

Maximum value of SAR (interpolated) = 0.665 mW/g

Mid/Zoom Scan (5x5x7) (5x5x7)/Cube 0: Measurement grid: $dx=7.5\text{mm}$, $dy=7.5\text{mm}$, $dz=5\text{mm}$
Reference Value = 26.7 V/m; Power Drift = 0.047 dB
Peak SAR (extrapolated) = 0.807 W/kg
SAR(1 g) = 0.628 mW/g; SAR(10 g) = 0.461 mW/g

[Info: Interpolated medium parameters used for SAR evaluation.](#)

Maximum value of SAR (measured) = 0.662 mW/g



0 dB = 0.662mW/g

RTS RIM Testing Services	Document Appendices for the BlackBerry® Smartphone Model RBJ41GW SAR Report		Page 49(78)
	Author Data Shahriar Ninad	Dates of Test May 23-June 01, 2007	Test Report No RTS-0510-0706-03

Date/Time: 01/06/2007 1:00:41 AM

Test Laboratory: RTS

File Name:

[Body Holster6 with headset Back GPRS850 Mid Chan Amb Tem 23 9 Liq Tem 23 1C.d a4](#)

DUT: BlackBerry Smartphone; Type: Sample ; Serial: Not Specified
Program Name: Compliance Testing: P1528 Protocol

Communication System: GPRS 850; Frequency: 836.8 MHz; Duty Cycle: 1:4.2
Medium parameters used (interpolated): $f = 836.8 \text{ MHz}$; $\sigma = 0.981 \text{ mho/m}$; $\epsilon_r = 53.9$; $\rho = 1000 \text{ kg/m}^3$
Phantom section: Flat Section

DASY4 Configuration:

- Probe: ET3DV6 - SN1642; ConvF(6.16, 6.16, 6.16); Calibrated: 15/01/2007
- Sensor-Surface: 4mm (Mechanical Surface Detection)
- Electronics: DAE3 Sn472; Calibrated: 07/03/2007
- Phantom: SAM 2; Type: SAM 4.0; Serial: 1080
- Measurement SW: DASY4, V4.7 Build 53; Postprocessing SW: SEMCAD, V1.8 Build 172

Middle/Area Scan (51x81x1): Measurement grid: dx=15mm, dy=15mm

[Info: Interpolated medium parameters used for SAR evaluation.](#)

Maximum value of SAR (interpolated) = 0.481 mW/g

Middle/Zoom Scan (5x5x7) (5x5x7)/Cube 0: Measurement grid: dx=7.5mm, dy=7.5mm, dz=5mm

Reference Value = 21.9 V/m; Power Drift = 0.063 dB

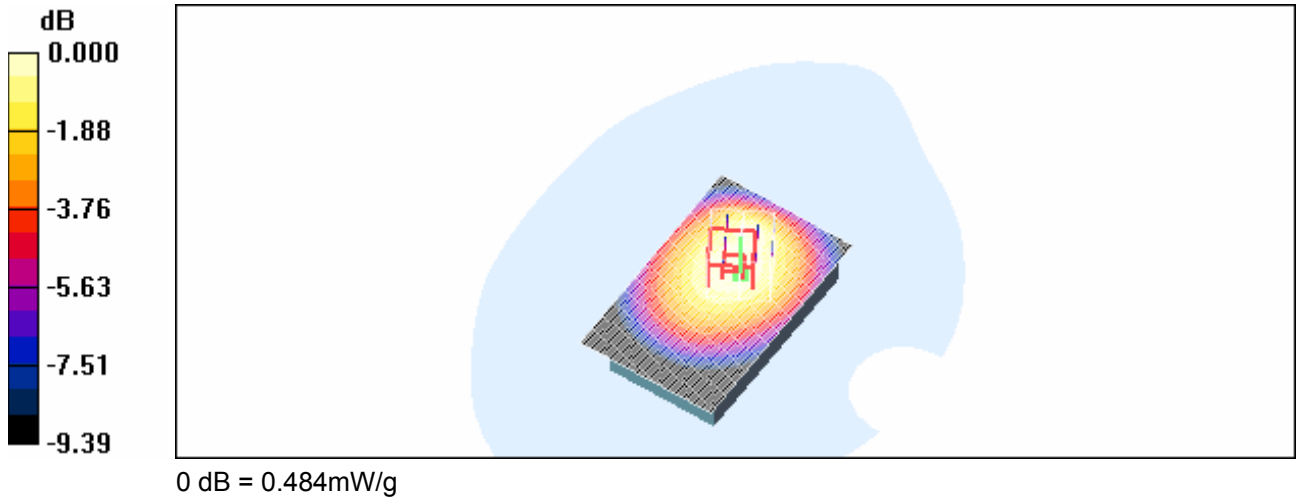
Peak SAR (extrapolated) = 0.589 W/kg

SAR(1 g) = 0.457 mW/g; SAR(10 g) = 0.334 mW/g

[Info: Interpolated medium parameters used for SAR evaluation.](#)

Maximum value of SAR (measured) = 0.484 mW/g

RTS RIM Testing Services	Document Appendices for the BlackBerry® Smartphone Model RBJ41GW SAR Report		Page 50(78)
	Author Data Shahriar Ninad	Dates of Test May 23-June 01, 2007	Test Report No RTS-0510-0706-03



RTS RIM Testing Services	Document Appendices for the BlackBerry® Smartphone Model RBJ41GW SAR Report		Page 51(78)
	Author Data Shahriar Ninad	Dates of Test May 23-June 01, 2007	Test Report No RTS-0510-0706-03

Date/Time: 01/06/2007 1:15:41 AM

Test Laboratory: RTS

File Name:

[Body Holster6 BT on Back GPRS850 Mid Chan Amb Tem 24 1 Liq Tem 23 2C.da4](#)

DUT: BlackBerry Smartphone; Type: Sample ; Serial: Not Specified
Program Name: Compliance Testing: P1528 Protocol

Communication System: GPRS 850; Frequency: 836.8 MHz; Duty Cycle: 1:4.2

Medium parameters used (interpolated): $f = 836.8 \text{ MHz}$; $\sigma = 0.981 \text{ mho/m}$; $\epsilon_r = 53.9$; $\rho = 1000 \text{ kg/m}^3$

Phantom section: Flat Section

DASY4 Configuration:

- Probe: ET3DV6 - SN1642; ConvF(6.16, 6.16, 6.16); Calibrated: 15/01/2007
- Sensor-Surface: 4mm (Mechanical Surface Detection)
- Electronics: DAE3 Sn472; Calibrated: 07/03/2007
- Phantom: SAM 2; Type: SAM 4.0; Serial: 1080
- Measurement SW: DASY4, V4.7 Build 53; Postprocessing SW: SEMCAD, V1.8 Build 172

Middle /Zoom Scan (5x5x7) (5x5x7)/Cube 0: Measurement grid: $dx=7.5\text{mm}$, $dy=7.5\text{mm}$, $dz=5\text{mm}$

Reference Value = 23.4 V/m; Power Drift = -0.048 dB

Peak SAR (extrapolated) = 0.645 W/kg

SAR(1 g) = 0.502 mW/g; SAR(10 g) = 0.367 mW/g

[Info: Interpolated medium parameters used for SAR evaluation.](#)

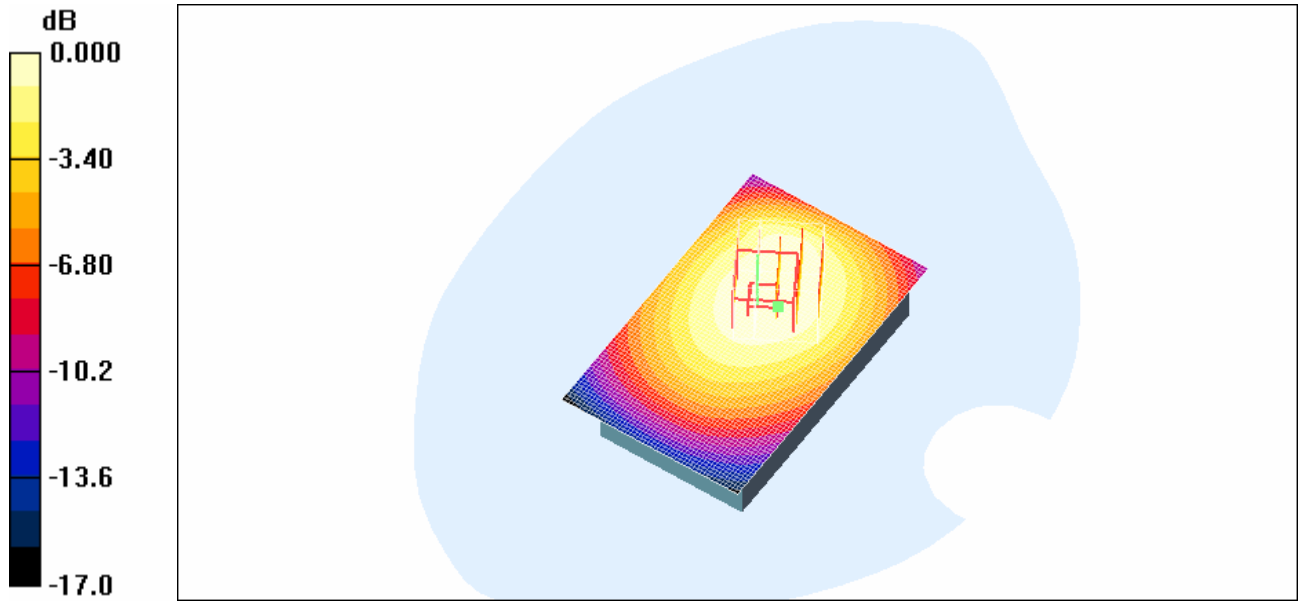
Maximum value of SAR (measured) = 0.530 mW/g

Middle/Area Scan (51x81x1): Measurement grid: $dx=15\text{mm}$, $dy=15\text{mm}$

[Info: Interpolated medium parameters used for SAR evaluation.](#)

Maximum value of SAR (interpolated) = 0.481 mW/g

RTS RIM Testing Services	Document Appendices for the BlackBerry® SmartphoneModel RBJ41GW SAR Report		Page 52(78)
	Author Data Shahriar Ninad	Dates of Test May 23-June 01, 2007	Test Report No RTS-0510-0706-03



0 dB = 0.481mW/g

RTS RIM Testing Services	Document Appendices for the BlackBerry® Smartphone Model RBJ41GW SAR Report		Page 53(78)
	Author Data Shahriar Ninad	Dates of Test May 23-June 01, 2007	Test Report No RTS-0510-0706-03

Date/Time: 01/06/2007 1:42:25 AM

Test Laboratory: RTS

File Name: [Body_Holster6_Front_GPRS850_Mid_Chan_Amb_Tem_23_8_Liq_Tem_23_0C.da4](#)

DUT: BlackBerry Smartphone; Type: Sample ; Serial: Not Specified
Program Name: Compliance Testing: P1528 Protocol

Communication System: GPRS 850; Frequency: 836.8 MHz; Duty Cycle: 1:4.2
Medium parameters used (interpolated): $f = 836.8 \text{ MHz}$; $\sigma = 0.981 \text{ mho/m}$; $\epsilon_r = 53.9$; $\rho = 1000 \text{ kg/m}^3$
Phantom section: Flat Section

DASY4 Configuration:

- Probe: ET3DV6 - SN1642; ConvF(6.16, 6.16, 6.16); Calibrated: 15/01/2007
- Sensor-Surface: 4mm (Mechanical Surface Detection)
- Electronics: DAE3 Sn472; Calibrated: 07/03/2007
- Phantom: SAM 2; Type: SAM 4.0; Serial: 1080
- Measurement SW: DASY4, V4.7 Build 53; Postprocessing SW: SEMCAD, V1.8 Build 172

Middle/Area Scan (61x101x1): Measurement grid: $dx=15\text{mm}$, $dy=15\text{mm}$

[Info: Interpolated medium parameters used for SAR evaluation.](#)

Maximum value of SAR (interpolated) = 0.421 mW/g

Middle/Zoom Scan (5x5x7) (5x5x7)/Cube 0: Measurement grid: $dx=7.5\text{mm}$, $dy=7.5\text{mm}$, $dz=5\text{mm}$

Reference Value = 19.9 V/m; Power Drift = -1.04 dB

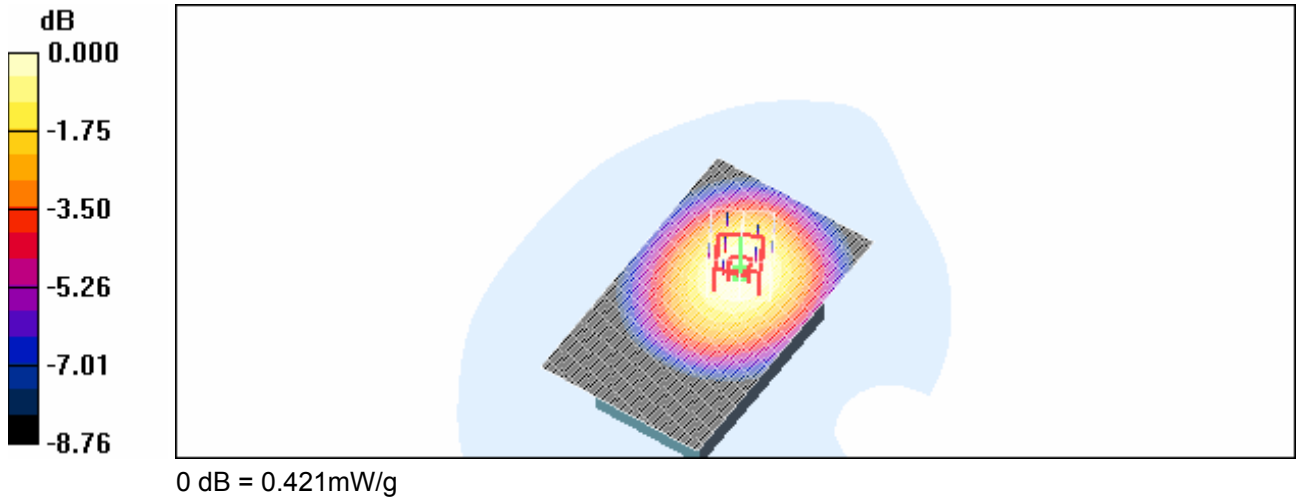
Peak SAR (extrapolated) = 0.502 W/kg

SAR(1 g) = 0.398 mW/g; SAR(10 g) = 0.294 mW/g

[Info: Interpolated medium parameters used for SAR evaluation.](#)

Maximum value of SAR (measured) = 0.421 mW/g

RTS RIM Testing Services	Document Appendices for the BlackBerry® Smartphone Model RBJ41GW SAR Report		Page 54(78)
	Author Data Shahriar Ninad	Dates of Test May 23-June 01, 2007	Test Report No RTS-0510-0706-03



RTS RIM Testing Services	Document Appendices for the BlackBerry® Smartphone Model RBJ41GW SAR Report		Page 55(78)
	Author Data Shahriar Ninad	Dates of Test May 23-June 01, 2007	Test Report No RTS-0510-0706-03

Date/Time: 28/05/2007 7:37:20 PM

Test Laboratory: RTS

File Name: [Body_25mm_Back_GPRS850_Mid_Chan_Amb_Tem_24_4_Liq_Tem_23_0C.da4](#)

DUT: BlackBerry Smartphone; Type: Sample ; Serial: Not Specified
Program Name: Compliance Testing: P1528 Protocol

Communication System: GPRS 850; Frequency: 836.8 MHz; Duty Cycle: 1:4.2
Medium parameters used (interpolated): $f = 836.8 \text{ MHz}$; $\sigma = 0.95 \text{ mho/m}$; $\epsilon_r = 53.2$; $\rho = 1000 \text{ kg/m}^3$
Phantom section: Flat Section

DASY4 Configuration:

- Probe: ET3DV6 - SN1642; ConvF(6.16, 6.16, 6.16); Calibrated: 15/01/2007
- Sensor-Surface: 4mm (Mechanical Surface Detection)
- Electronics: DAE3 Sn472; Calibrated: 07/03/2007
- Phantom: SAM 2; Type: SAM 4.0; Serial: 1080
- Measurement SW: DASY4, V4.7 Build 53; Postprocessing SW: SEMCAD, V1.8 Build 172

Mid/Area Scan (51x81x1): Measurement grid: dx=15mm, dy=15mm

[Info: Interpolated medium parameters used for SAR evaluation.](#)

Maximum value of SAR (interpolated) = 0.515 mW/g

Mid/Zoom Scan (5x5x7) (5x5x7)/Cube 0: Measurement grid: dx=7.5mm, dy=7.5mm, dz=5mm

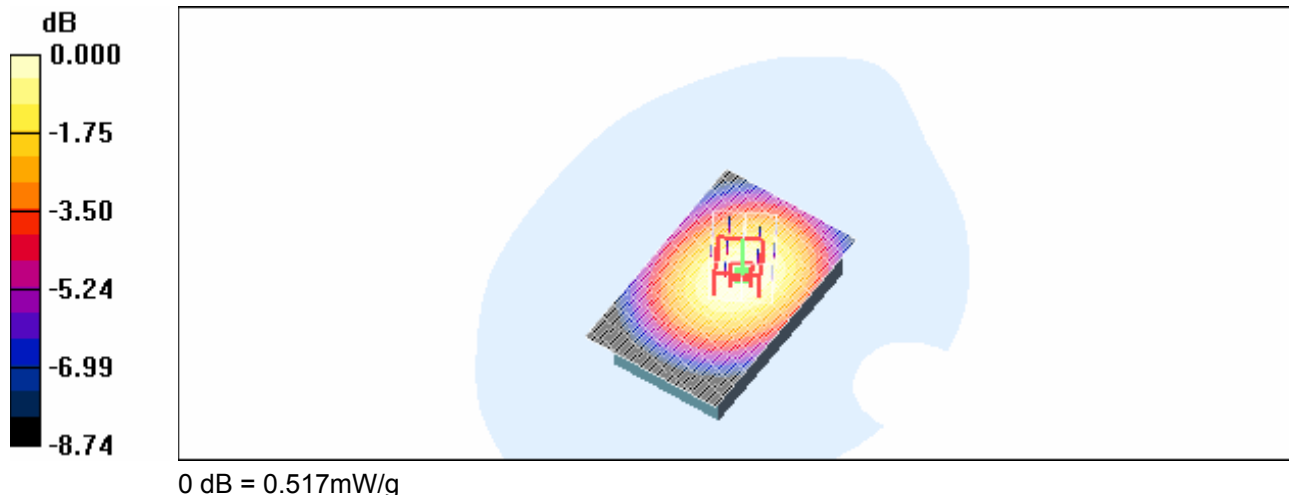
Reference Value = 24.0 V/m; Power Drift = 0.007 dB

Peak SAR (extrapolated) = 0.634 W/kg

SAR(1 g) = 0.488 mW/g; SAR(10 g) = 0.356 mW/g

[Info: Interpolated medium parameters used for SAR evaluation.](#)

Maximum value of SAR (measured) = 0.517 mW/g



RTS RIM Testing Services	Document Appendices for the BlackBerry® Smartphone Model RBJ41GW SAR Report		Page 56(78)
	Author Data Shahriar Ninad	Dates of Test May 23-June 01, 2007	Test Report No RTS-0510-0706-03

Date/Time: 29/05/2007 2:46:26 PM

Test Laboratory: RTS

Body_Holster1_Back_GPRS1900_mid_Chan_Amb_Tem_23_7_Liq_Tem_22_9C

DUT: BlackBerry Smartphone; Type: Sample ; Serial: Not Specified

Communication System: GPRS 1900; Frequency: 1880 MHz; Duty Cycle: 1:4.2

Medium parameters used: $f = 1880 \text{ MHz}$; $\sigma = 1.54 \text{ mho/m}$; $\epsilon_r = 51.2$; $\rho = 1000 \text{ kg/m}^3$

Phantom section: Flat Section

DASY4 Configuration:

- Probe: ET3DV6 - SN1642; ConvF(4.78, 4.78, 4.78); Calibrated: 15/01/2007
- Sensor-Surface: 4mm (Mechanical Surface Detection)
- Electronics: DAE3 Sn472; Calibrated: 07/03/2007
- Phantom: SAM 2; Type: SAM 4.0; Serial: 1080
- Measurement SW: DASY4, V4.7 Build 53; Postprocessing SW: SEMCAD, V1.8 Build 172

Middle/Area Scan (51x81x1): Measurement grid: $dx=15\text{mm}$, $dy=15\text{mm}$

Maximum value of SAR (interpolated) = 0.329 mW/g

Middle/Zoom Scan (5x5x7) (5x5x7)/Cube 0: Measurement grid: $dx=7.5\text{mm}$, $dy=7.5\text{mm}$, $dz=5\text{mm}$

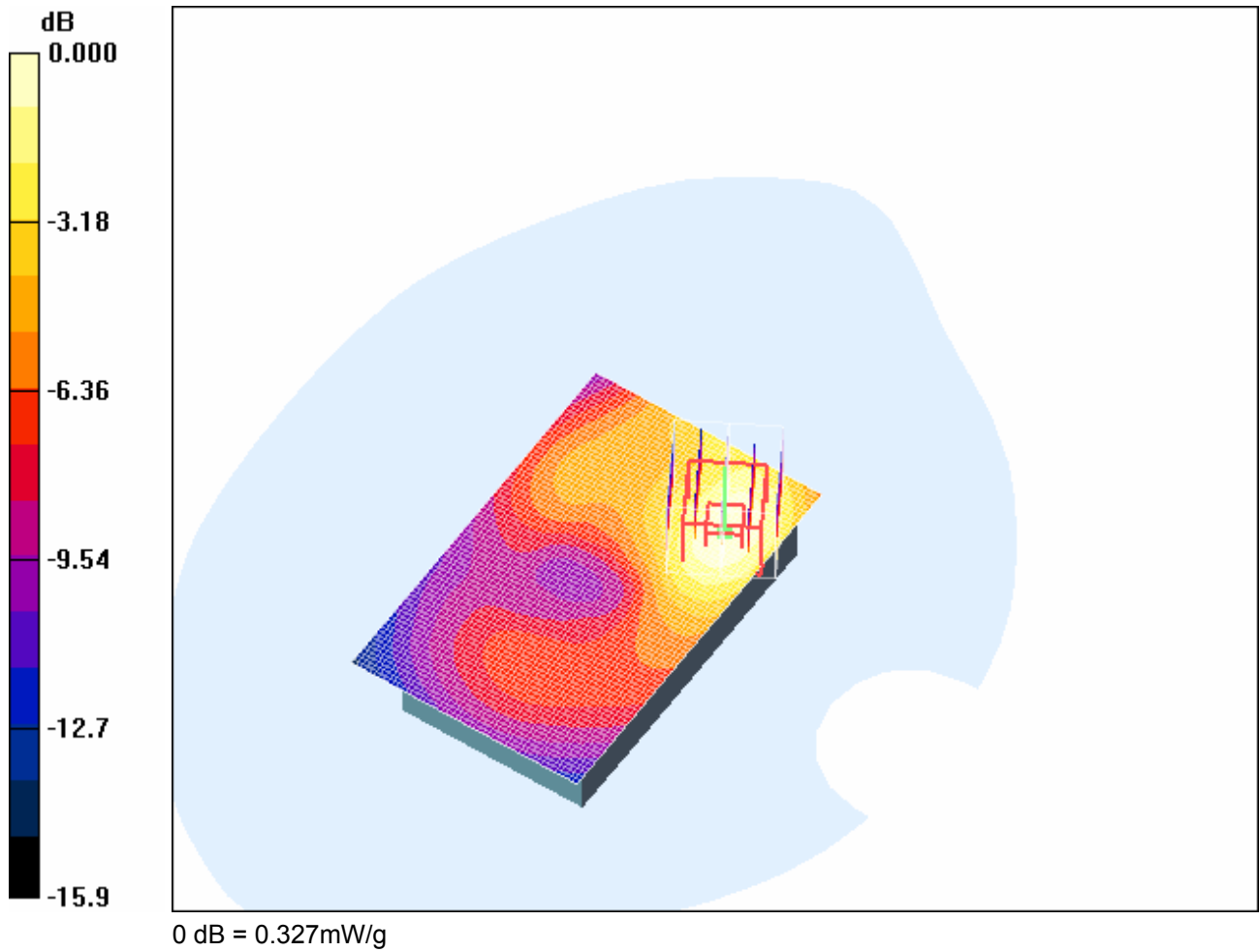
Reference Value = 5.38 V/m; Power Drift = 0.152 dB

Peak SAR (extrapolated) = 0.463 W/kg

SAR(1 g) = 0.298 mW/g; SAR(10 g) = 0.179 mW/g

Maximum value of SAR (measured) = 0.327 mW/g

RTS RIM Testing Services	Document Appendices for the BlackBerry® SmartphoneModel RBJ41GW SAR Report		Page 57(78)
	Author Data Shahriar Ninad	Dates of Test May 23-June 01, 2007	Test Report No RTS-0510-0706-03



RTS RIM Testing Services	Document Appendices for the BlackBerry® Smartphone Model RBJ41GW SAR Report		Page 58(78)
	Author Data Shahriar Ninad	Dates of Test May 23-June 01, 2007	Test Report No RTS-0510-0706-03

Date/Time: 29/05/2007 3:18:28 PM

Test Laboratory: RTS

Body_Holster4_Back_GPRS1900_mid_Chan_Amb_Tem_23_2_Liq_Tem_22_5C

DUT: BlackBerry Smartphone; Type: Sample ; Serial: Not Specified

Communication System: GPRS 1900; Frequency: 1880 MHz; Duty Cycle: 1:4.2

Medium parameters used: $f = 1880 \text{ MHz}$; $\sigma = 1.54 \text{ mho/m}$; $\epsilon_r = 51.2$; $\rho = 1000 \text{ kg/m}^3$

Phantom section: Flat Section

DASY4 Configuration:

- Probe: ET3DV6 - SN1642; ConvF(4.78, 4.78, 4.78); Calibrated: 15/01/2007
- Sensor-Surface: 4mm (Mechanical Surface Detection)
- Electronics: DAE3 Sn472; Calibrated: 07/03/2007
- Phantom: SAM 2; Type: SAM 4.0; Serial: 1080
- Measurement SW: DASY4, V4.7 Build 53; Postprocessing SW: SEMCAD, V1.8 Build 172

Middle/Area Scan (51x91x1): Measurement grid: $dx=15\text{mm}$, $dy=15\text{mm}$

Maximum value of SAR (interpolated) = 0.513 mW/g

Middle/Zoom Scan (5x5x7) (5x5x7)/Cube 0: Measurement grid: $dx=7.5\text{mm}$, $dy=7.5\text{mm}$, $dz=5\text{mm}$

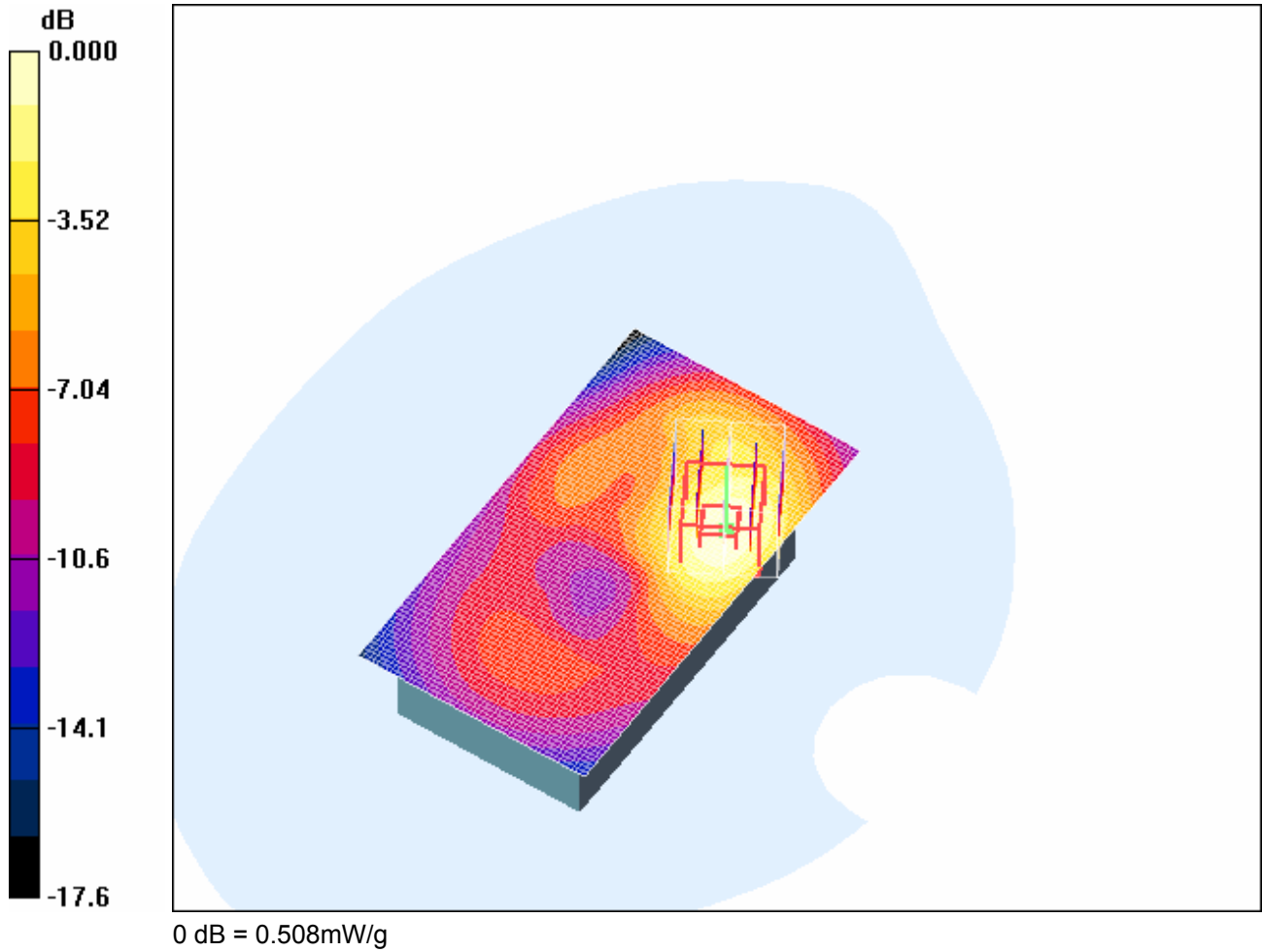
Reference Value = 5.46 V/m; Power Drift = -0.205 dB

Peak SAR (extrapolated) = 0.733 W/kg

SAR(1 g) = 0.458 mW/g; SAR(10 g) = 0.267 mW/g

Maximum value of SAR (measured) = 0.508 mW/g

RTS RIM Testing Services	Document Appendices for the BlackBerry® SmartphoneModel RBJ41GW SAR Report		Page 59(78)
	Author Data Shahriar Ninad	Dates of Test May 23-June 01, 2007	Test Report No RTS-0510-0706-03



RTS RIM Testing Services	Document Appendices for the BlackBerry® Smartphone Model RBJ41GW SAR Report		Page 60(78)
	Author Data Shahriar Ninad	Dates of Test May 23-June 01, 2007	Test Report No RTS-0510-0706-03

Date/Time: 29/05/2007 6:52:21 PM

Test Laboratory: RTS

File Name: [Body_Holster6_Back_GPRS1900_mid_Chan_Amb_Tem_23_7_Liq_Tem_22_6C.da4](#)

DUT: BlackBerry Smartphone; Type: Sample ; Serial: Not Specified
Program Name: Compliance Testing: P1528 Protocol

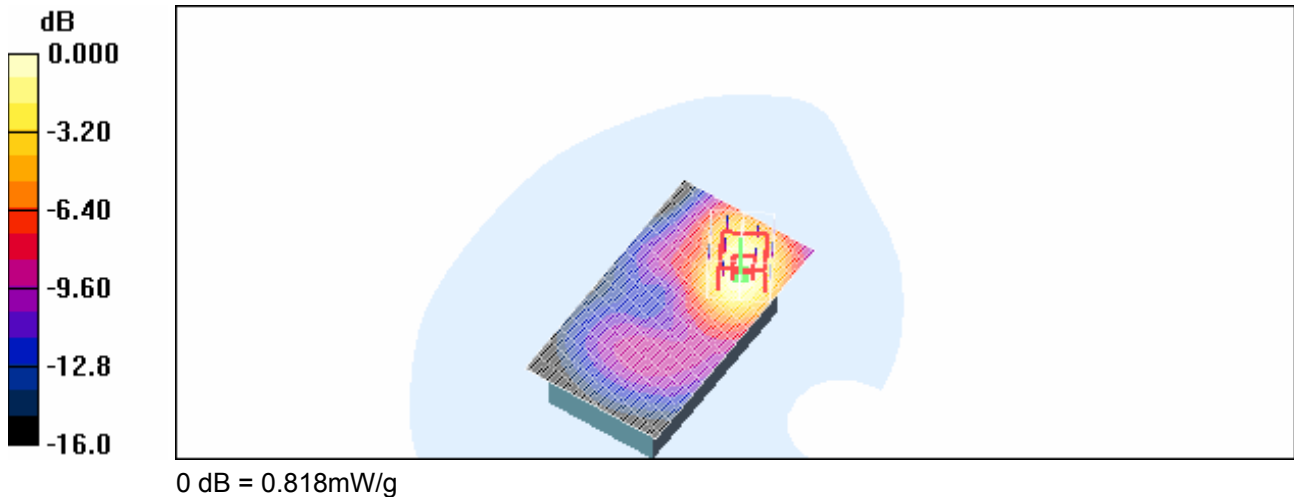
Communication System: GPRS 1900; Frequency: 1880 MHz; Duty Cycle: 1:4.2
Medium parameters used: $f = 1880 \text{ MHz}$; $\sigma = 1.54 \text{ mho/m}$; $\epsilon_r = 51.2$; $\rho = 1000 \text{ kg/m}^3$
Phantom section: Flat Section

DASY4 Configuration:

- Probe: ET3DV6 - SN1642; ConvF(4.78, 4.78, 4.78); Calibrated: 15/01/2007
- Sensor-Surface: 4mm (Mechanical Surface Detection)
- Electronics: DAE3 Sn472; Calibrated: 07/03/2007
- Phantom: SAM 2; Type: SAM 4.0; Serial: 1080
- Measurement SW: DASY4, V4.7 Build 53; Postprocessing SW: SEMCAD, V1.8 Build 172

Mid/Area Scan (51x91x1): Measurement grid: $dx=15\text{mm}$, $dy=15\text{mm}$
Maximum value of SAR (interpolated) = 0.773 mW/g

Mid/Zoom Scan (5x5x7) (5x5x7)/Cube 0: Measurement grid: $dx=7.5\text{mm}$, $dy=7.5\text{mm}$, $dz=5\text{mm}$
Reference Value = 6.67 V/m; Power Drift = 0.284 dB
Peak SAR (extrapolated) = 1.19 W/kg
SAR(1 g) = 0.746 mW/g; SAR(10 g) = 0.436 mW/g
Maximum value of SAR (measured) = 0.818 mW/g



RTS RIM Testing Services	Document Appendices for the BlackBerry® Smartphone Model RBJ41GW SAR Report		Page 61(78)
	Author Data Shahriar Ninad	Dates of Test May 23-June 01, 2007	Test Report No RTS-0510-0706-03

Date/Time: 31/05/2007 4:48:50 PM

Test Laboratory: RTS

File Name:

[Body Holster6 Back with headset GPRS1900 mid Chan Amb Tem 24 7 Liq Tem 23 4C.da4](#)

DUT: BlackBerry Smartphone; Type: Sample ; Serial: Not Specified
Program Name: Compliance Testing: P1528 Protocol

Communication System: GPRS 1900; Frequency: 1880 MHz; Duty Cycle: 1:4.2
Medium parameters used: $f = 1880 \text{ MHz}$; $\sigma = 1.56 \text{ mho/m}$; $\epsilon_r = 51.4$; $\rho = 1000 \text{ kg/m}^3$
Phantom section: Flat Section

DASY4 Configuration:

- Probe: ET3DV6 - SN1642; ConvF(4.78, 4.78, 4.78); Calibrated: 15/01/2007
- Sensor-Surface: 4mm (Mechanical Surface Detection)
- Electronics: DAE3 Sn472; Calibrated: 07/03/2007
- Phantom: SAM 2; Type: SAM 4.0; Serial: 1080
- Measurement SW: DASY4, V4.7 Build 53; Postprocessing SW: SEMCAD, V1.8 Build 172

Middle/Area Scan (51x91x1): Measurement grid: dx=15mm, dy=15mm
Maximum value of SAR (interpolated) = 0.636 mW/g

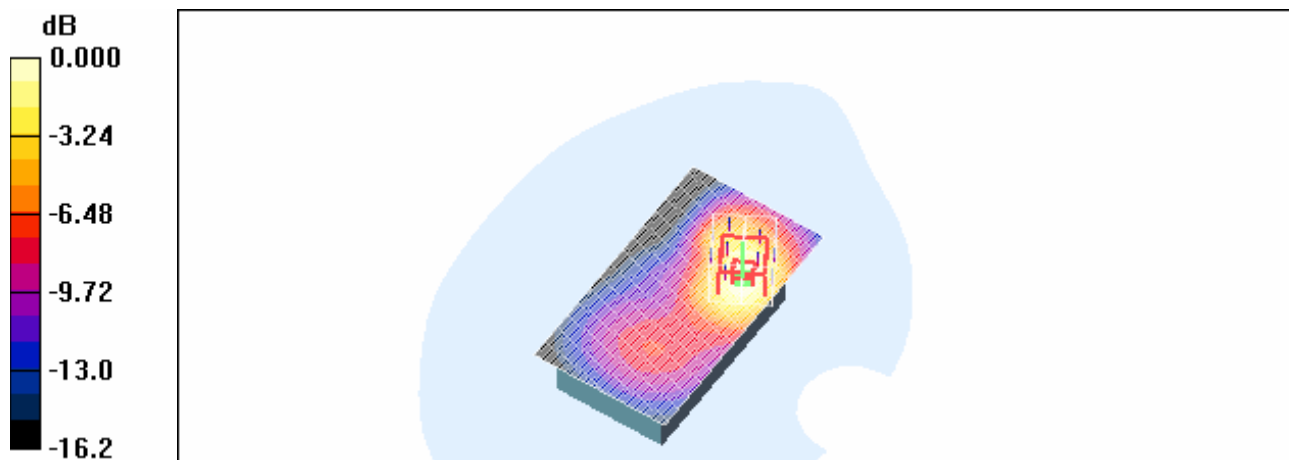
Middle/Zoom Scan (5x5x7) (5x5x7)/Cube 0: Measurement grid: dx=7.5mm, dy=7.5mm, dz=5mm

Reference Value = 7.98 V/m; Power Drift = 0.120 dB

Peak SAR (extrapolated) = 0.942 W/kg

SAR(1 g) = 0.598 mW/g; SAR(10 g) = 0.348 mW/g

Maximum value of SAR (measured) = 0.657 mW/g



0 dB = 0.657mW/g

RTS RIM Testing Services	Document Appendices for the BlackBerry® Smartphone Model RBJ41GW SAR Report		Page 62(78)
	Author Data Shahriar Ninad	Dates of Test May 23-June 01, 2007	Test Report No RTS-0510-0706-03

Date/Time: 31/05/2007 5:07:41 PM

Test Laboratory: RTS

File Name:

[Body Holster6 BT on Back GPRS1900 mid Chan Amb Tem 24 4Liq Tem 23 2C.da4](#)

DUT: BlackBerry Smartphone; Type: Sample ; Serial: Not Specified

Program Name: Compliance Testing: P1528 Protocol

Communication System: GPRS 1900; Frequency: 1880 MHz; Duty Cycle: 1:4.2

Medium parameters used: $f = 1880 \text{ MHz}$; $\sigma = 1.56 \text{ mho/m}$; $\epsilon_r = 51.4$; $\rho = 1000 \text{ kg/m}^3$

Phantom section: Flat Section

DASY4 Configuration:

- Probe: ET3DV6 - SN1642; ConvF(4.78, 4.78, 4.78); Calibrated: 15/01/2007
- Sensor-Surface: 4mm (Mechanical Surface Detection)
- Electronics: DAE3 Sn472; Calibrated: 07/03/2007
- Phantom: SAM 2; Type: SAM 4.0; Serial: 1080
- Measurement SW: DASY4, V4.7 Build 53; Postprocessing SW: SEMCAD, V1.8 Build 172

Mid /Zoom Scan (5x5x7) (5x5x7)/Cube 0: Measurement grid: $dx=7.5\text{mm}$, $dy=7.5\text{mm}$, $dz=5\text{mm}$

Reference Value = 7.29 V/m; Power Drift = -0.016 dB

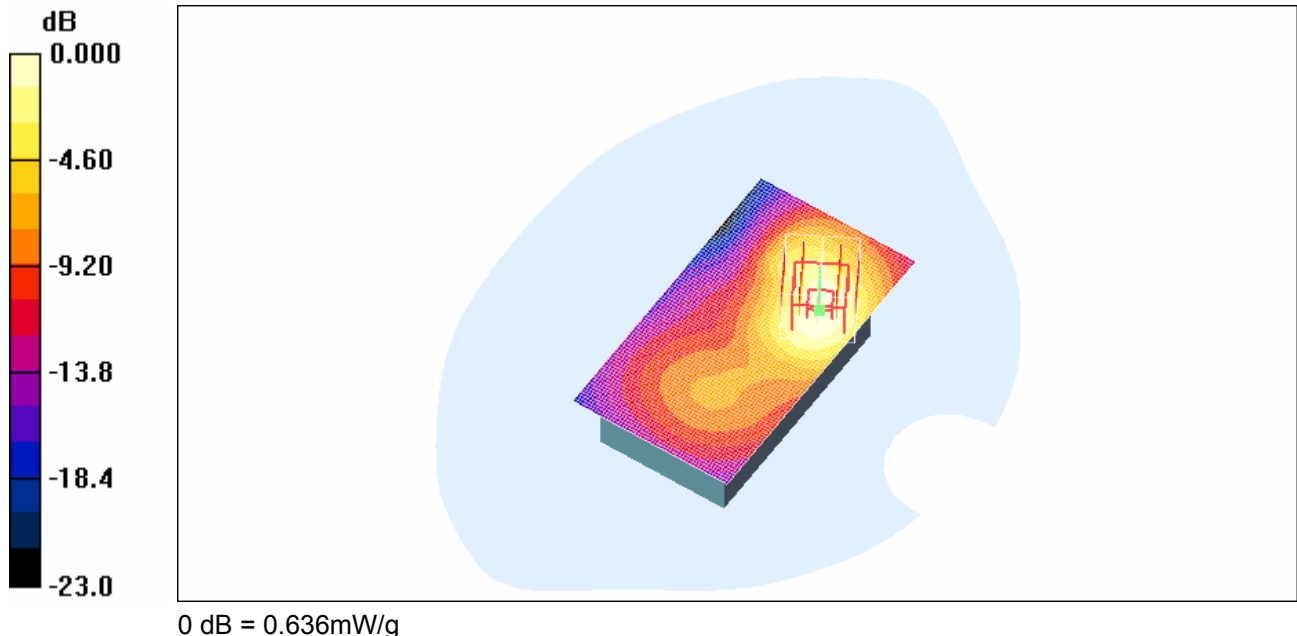
Peak SAR (extrapolated) = 0.986 W/kg

SAR(1 g) = 0.627 mW/g; SAR(10 g) = 0.363 mW/g

Maximum value of SAR (measured) = 0.688 mW/g

Mid/Area Scan (51x91x1): Measurement grid: $dx=15\text{mm}$, $dy=15\text{mm}$

Maximum value of SAR (interpolated) = 0.636 mW/g



RTS RIM Testing Services	Document Appendices for the BlackBerry® Smartphone Model RBJ41GW SAR Report		Page 63(78)
	Author Data Shahriar Ninad	Dates of Test May 23-June 01, 2007	Test Report No RTS-0510-0706-03

Date/Time: 31/05/2007 8:44:08 PM

Test Laboratory: RTS

File Name: [Body_Holster6_front_GPRS1900_mid_Chan_Amb_Tem_24_5_Liq_Tem_23_3C.da4](#)

DUT: BlackBerry Smartphone; Type: Sample ; Serial: Not Specified
Program Name: Compliance Testing: P1528 Protocol

Communication System: GPRS 1900; Frequency: 1880 MHz; Duty Cycle: 1:4.2
Medium parameters used: $f = 1880 \text{ MHz}$; $\sigma = 1.56 \text{ mho/m}$; $\epsilon_r = 51.4$; $\rho = 1000 \text{ kg/m}^3$
Phantom section: Flat Section

DASY4 Configuration:

- Probe: ET3DV6 - SN1642; ConvF(4.78, 4.78, 4.78); Calibrated: 15/01/2007
- Sensor-Surface: 4mm (Mechanical Surface Detection)
- Electronics: DAE3 Sn472; Calibrated: 07/03/2007
- Phantom: SAM 2; Type: SAM 4.0; Serial: 1080
- Measurement SW: DASY4, V4.7 Build 53; Postprocessing SW: SEMCAD, V1.8 Build 172

Mid/Area Scan (51x101x1): Measurement grid: $dx=15\text{mm}$, $dy=15\text{mm}$
Maximum value of SAR (interpolated) = 0.244 mW/g

Mid/Zoom Scan (5x5x7) (5x5x7)/Cube 0: Measurement grid: $dx=7.5\text{mm}$, $dy=7.5\text{mm}$, $dz=5\text{mm}$
Reference Value = 7.19 V/m; Power Drift = -0.074 dB
Peak SAR (extrapolated) = 0.361 W/kg
SAR(1 g) = 0.214 mW/g; SAR(10 g) = 0.126 mW/g
Maximum value of SAR (measured) = 0.234 mW/g



0 dB = 0.234mW/g

RTS RIM Testing Services	Document Appendices for the BlackBerry® Smartphone Model RBJ41GW SAR Report		Page 64(78)
	Author Data Shahriar Ninad	Dates of Test May 23-June 01, 2007	Test Report No RTS-0510-0706-03

Date/Time: 31/05/2007 10:48:10 PM

Test Laboratory: RTS

File Name: [Body_25mm_Back_GPRS1900_mid_Chan_Amb_Tem_23_9Liq_Tem_23_1C.da4](#)

DUT: BlackBerry Smartphone; Type: Sample ; Serial: Not Specified
Program Name: Compliance Testing: P1528 Protocol

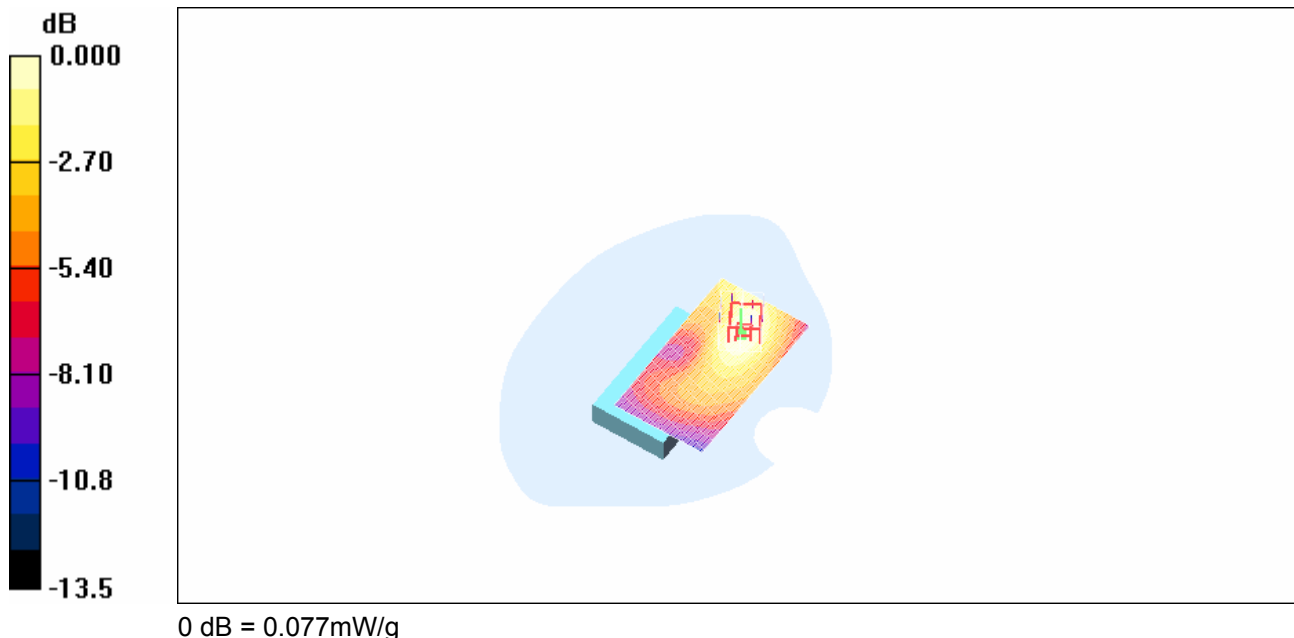
Communication System: GPRS 1900; Frequency: 1880 MHz; Duty Cycle: 1:4.2
Medium parameters used: $f = 1880 \text{ MHz}$; $\sigma = 1.56 \text{ mho/m}$; $\epsilon_r = 51.4$; $\rho = 1000 \text{ kg/m}^3$
Phantom section: Flat Section

DASY4 Configuration:

- Probe: ET3DV6 - SN1642; ConvF(4.78, 4.78, 4.78); Calibrated: 15/01/2007
- Sensor-Surface: 4mm (Mechanical Surface Detection)
- Electronics: DAE3 Sn472; Calibrated: 07/03/2007
- Phantom: SAM 2; Type: SAM 4.0; Serial: 1080
- Measurement SW: DASY4, V4.7 Build 53; Postprocessing SW: SEMCAD, V1.8 Build 172

Mid/Area Scan (51x91x1): Measurement grid: $dx=15\text{mm}$, $dy=15\text{mm}$
Maximum value of SAR (interpolated) = 0.079 mW/g

Mid/Zoom Scan (5x5x7) (5x5x7)/Cube 0: Measurement grid: $dx=7.5\text{mm}$, $dy=7.5\text{mm}$, $dz=5\text{mm}$
Reference Value = 3.64 V/m; Power Drift = 0.154 dB
Peak SAR (extrapolated) = 0.106 W/kg
SAR(1 g) = 0.071 mW/g; SAR(10 g) = 0.045 mW/g
Maximum value of SAR (measured) = 0.077 mW/g



RTS RIM Testing Services	Document Appendices for the BlackBerry® Smartphone Model RBJ41GW SAR Report		Page 65(78)
	Author Data Shahriar Ninad	Dates of Test May 23-June 01, 2007	Test Report No RTS-0510-0706-03

Date/Time: 30/05/2007 4:59:21 PM

Test Laboratory: RTS

File Name: [Body_Holster1_Back_802.11b_mid_Chan_Amb_Tem_24_5_Liq_Tem_23_2C.da4](#)

DUT: BlackBerry Smartphone; Type: Sample ; Serial: Not Specified
Program Name: Compliance Testing: P1528 Protocol

Communication System: 802.11 b (2450); Frequency: 2437 MHz; Duty Cycle: 1:1
Medium parameters used (interpolated): $f = 2437$ MHz; $\sigma = 1.97$ mho/m; $\epsilon_r = 50.1$; $\rho = 1000$ kg/m³
Phantom section: Flat Section

DASY4 Configuration:

- Probe: EX3DV4 - SN3548; ConvF(7.13, 7.13, 7.13); Calibrated: 19/01/2007
- Sensor-Surface: 2mm (Mechanical Surface Detection)
- Electronics: DAE3 Sn472; Calibrated: 07/03/2007
- Phantom: SAM 2; Type: SAM 4.0; Serial: 1080
- Measurement SW: DASY4, V4.7 Build 53; Postprocessing SW: SEMCAD, V1.8 Build 172

Middle/Area Scan (61x91x1): Measurement grid: dx=15mm, dy=15mm

[Info: Interpolated medium parameters used for SAR evaluation.](#)

Maximum value of SAR (interpolated) = 0.772 mW/g

Middle/Zoom Scan (5x5x7) (5x5x7)/Cube 0: Measurement grid: dx=7.5mm, dy=7.5mm, dz=5mm

Reference Value = 10.5 V/m; Power Drift = -0.117 dB

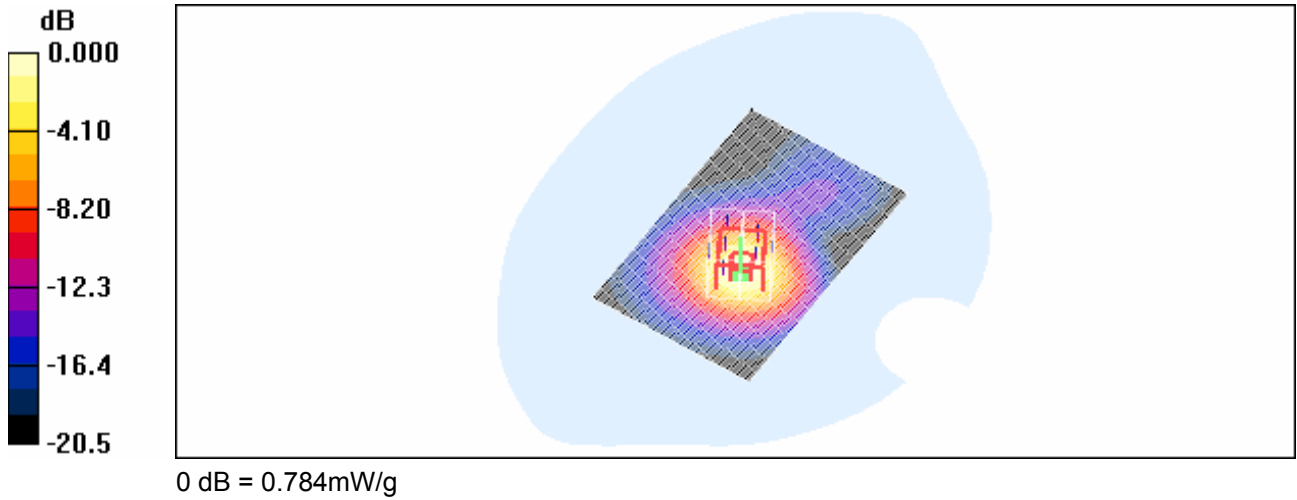
Peak SAR (extrapolated) = 0.996 W/kg

SAR(1 g) = 0.543 mW/g; SAR(10 g) = 0.272 mW/g

[Info: Interpolated medium parameters used for SAR evaluation.](#)

Maximum value of SAR (measured) = 0.784 mW/g

RTS RIM Testing Services	Document Appendices for the BlackBerry® Smartphone Model RBJ41GW SAR Report		Page 66(78)
	Author Data Shahriar Ninad	Dates of Test May 23-June 01, 2007	Test Report No RTS-0510-0706-03



RTS RIM Testing Services	Document Appendices for the BlackBerry® Smartphone Model RBJ41GW SAR Report		Page 67(78)
	Author Data Shahriar Ninad	Dates of Test May 23-June 01, 2007	Test Report No RTS-0510-0706-03

Date/Time: 30/05/2007 5:19:40 PM

Test Laboratory: RTS

File Name: [Body_Holster4_Back_802.11b_mid_Chan_Amb_Tem_24_1_Liq_Tem_23_4C.da4](#)

DUT: BlackBerry Smartphone; Type: Sample ; Serial: Not Specified
Program Name: Compliance Testing: P1528 Protocol

Communication System: 802.11 b (2450); Frequency: 2437 MHz; Duty Cycle: 1:1
Medium parameters used (interpolated): $f = 2437$ MHz; $\sigma = 1.97$ mho/m; $\epsilon_r = 50.1$; $\rho = 1000$ kg/m³
Phantom section: Flat Section

DASY4 Configuration:

- Probe: EX3DV4 - SN3548; ConvF(7.13, 7.13, 7.13); Calibrated: 19/01/2007
- Sensor-Surface: 2mm (Mechanical Surface Detection)
- Electronics: DAE3 Sn472; Calibrated: 07/03/2007
- Phantom: SAM 2; Type: SAM 4.0; Serial: 1080
- Measurement SW: DASY4, V4.7 Build 53; Postprocessing SW: SEMCAD, V1.8 Build 172

Middle/Area Scan (61x91x1): Measurement grid: dx=15mm, dy=15mm

[Info: Interpolated medium parameters used for SAR evaluation.](#)

Maximum value of SAR (interpolated) = 1.09 mW/g

Middle/Zoom Scan (5x5x7) (5x5x7)/Cube 0: Measurement grid: dx=7.5mm, dy=7.5mm, dz=5mm

Reference Value = 6.34 V/m; Power Drift = -0.159 dB

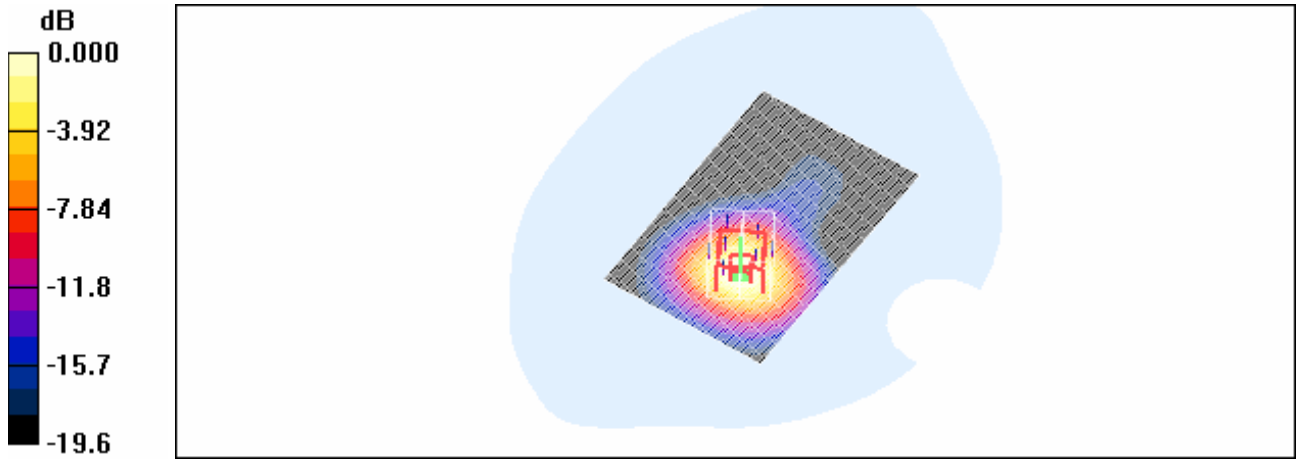
Peak SAR (extrapolated) = 1.32 W/kg

SAR(1 g) = 0.732 mW/g; SAR(10 g) = 0.377 mW/g

[Info: Interpolated medium parameters used for SAR evaluation.](#)

Maximum value of SAR (measured) = 1.04 mW/g

RTS RIM Testing Services	Document Appendices for the BlackBerry® Smartphone Model RBJ41GW SAR Report		Page 68(78)
	Author Data Shahriar Ninad	Dates of Test May 23-June 01, 2007	Test Report No RTS-0510-0706-03



0 dB = 1.04mW/g

RTS RIM Testing Services	Document Appendices for the BlackBerry® Smartphone Model RBJ41GW SAR Report		Page 69(78)
	Author Data Shahriar Ninad	Dates of Test May 23-June 01, 2007	Test Report No RTS-0510-0706-03

Date/Time: 30/05/2007 5:41:35 PM

Test Laboratory: RTS

File Name: [Body_Holster6_Back_802.11b_mid_Chan_Amb_Tem_24_2_Liq_Tem_23_5C.da4](#)

DUT: BlackBerry Smartphone; Type: Sample ; Serial: Not Specified
Program Name: Compliance Testing: P1528 Protocol

Communication System: 802.11 b (2450); Frequency: 2437 MHz; Duty Cycle: 1:1
Medium parameters used (interpolated): $f = 2437 \text{ MHz}$; $\sigma = 1.97 \text{ mho/m}$; $\epsilon_r = 50.1$; $\rho = 1000 \text{ kg/m}^3$
Phantom section: Flat Section

DASY4 Configuration:

- Probe: EX3DV4 - SN3548; ConvF(7.13, 7.13, 7.13); Calibrated: 19/01/2007
- Sensor-Surface: 2mm (Mechanical Surface Detection)
- Electronics: DAE3 Sn472; Calibrated: 07/03/2007
- Phantom: SAM 2; Type: SAM 4.0; Serial: 1080
- Measurement SW: DASY4, V4.7 Build 53; Postprocessing SW: SEMCAD, V1.8 Build 172

Middle/Area Scan (61x91x1): Measurement grid: dx=15mm, dy=15mm

[Info: Interpolated medium parameters used for SAR evaluation.](#)

Maximum value of SAR (interpolated) = 0.391 mW/g

Middle/Zoom Scan (5x5x7) (5x5x7)/Cube 0: Measurement grid: dx=7.5mm, dy=7.5mm, dz=5mm

Reference Value = 6.10 V/m; Power Drift = -0.191 dB

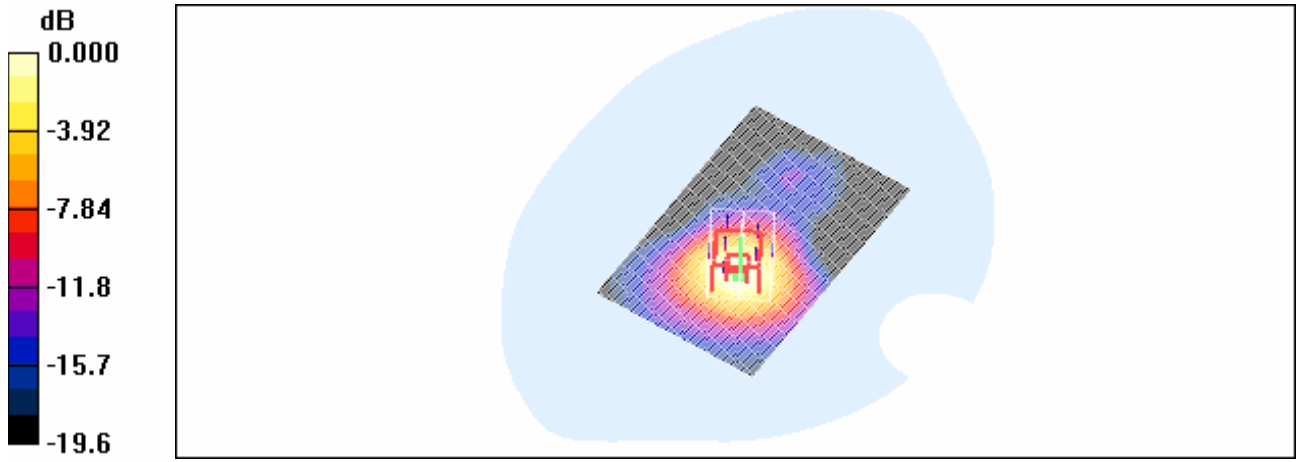
Peak SAR (extrapolated) = 0.479 W/kg

SAR(1 g) = 0.269 mW/g; SAR(10 g) = 0.142 mW/g

[Info: Interpolated medium parameters used for SAR evaluation.](#)

Maximum value of SAR (measured) = 0.376 mW/g

RTS RIM Testing Services	Document Appendices for the BlackBerry® SmartphoneModel RBJ41GW SAR Report		Page 70(78)
	Author Data Shahriar Ninad	Dates of Test May 23-June 01, 2007	Test Report No RTS-0510-0706-03



0 dB = 0.376mW/g

RTS RIM Testing Services	Document Appendices for the BlackBerry® Smartphone Model RBJ41GW SAR Report		Page 71(78)
	Author Data Shahriar Ninad	Dates of Test May 23-June 01, 2007	Test Report No RTS-0510-0706-03

Date/Time: 31/05/2007 9:36:30 AM

Test Laboratory: RTS

File Name:

[Body Holster4 Back 802.11b headset mid Chan Amb Tem 24 1 Liq Tem 23 4C.da4](#)

DUT: BlackBerry Smartphone; Type: Sample ; Serial: Not Specified
Program Name: Compliance Testing: P1528 Protocol

Communication System: 802.11 b (2450); Frequency: 2437 MHz; Duty Cycle: 1:1
Medium parameters used (interpolated): $f = 2437$ MHz; $\sigma = 1.97$ mho/m; $\epsilon_r = 50.1$; $\rho = 1000$ kg/m³
Phantom section: Flat Section

DASY4 Configuration:

- Probe: EX3DV4 - SN3548; ConvF(7.13, 7.13, 7.13); Calibrated: 19/01/2007
- Sensor-Surface: 2mm (Mechanical Surface Detection)
- Electronics: DAE3 Sn472; Calibrated: 07/03/2007
- Phantom: SAM 2; Type: SAM 4.0; Serial: 1080
- Measurement SW: DASY4, V4.7 Build 53; Postprocessing SW: SEMCAD, V1.8 Build 172

Middle/Area Scan (61x91x1): Measurement grid: dx=15mm, dy=15mm

[Info: Interpolated medium parameters used for SAR evaluation.](#)

Maximum value of SAR (interpolated) = 1.16 mW/g

Middle/Zoom Scan (5x5x7) (5x5x7)/Cube 0: Measurement grid: dx=7.5mm, dy=7.5mm, dz=5mm

Reference Value = 5.85 V/m; Power Drift = -0.008 dB

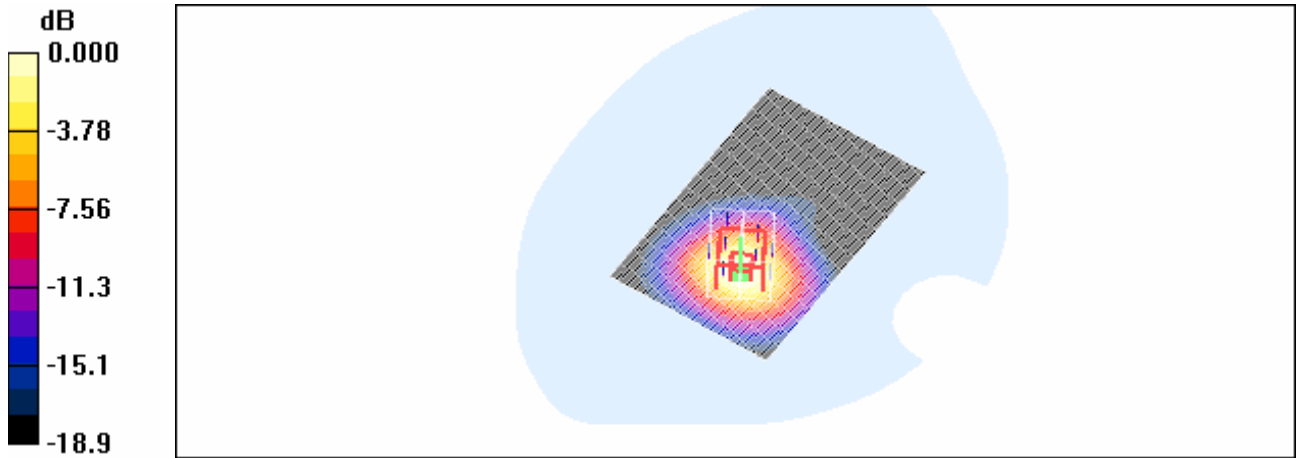
Peak SAR (extrapolated) = 1.36 W/kg

SAR(1 g) = 0.771 mW/g; SAR(10 g) = 0.402 mW/g

[Info: Interpolated medium parameters used for SAR evaluation.](#)

Maximum value of SAR (measured) = 1.08 mW/g

RTS RIM Testing Services	Document Appendices for the BlackBerry® Smartphone Model RBJ41GW SAR Report		Page 72(78)
	Author Data Shahriar Ninad	Dates of Test May 23-June 01, 2007	Test Report No RTS-0510-0706-03



0 dB = 1.08mW/g

RTS RIM Testing Services	Document Appendices for the BlackBerry® Smartphone Model RBJ41GW SAR Report		Page 73(78)
	Author Data Shahriar Ninad	Dates of Test May 23-June 01, 2007	Test Report No RTS-0510-0706-03

Date/Time: 31/05/2007 10:12:46 AM

Test Laboratory: RTS

Body_Holster4_Front_802.11b_mid_Chan_Amb_Tem_24_5_Liq_Tem_23_5C

DUT: BlackBerry Smartphone; Type: Sample ; Serial: Not Specified

Communication System: 802.11 b (2450); Frequency: 2437 MHz; Duty Cycle: 1:1
Medium parameters used (interpolated): $f = 2437$ MHz; $\sigma = 1.97$ mho/m; $\epsilon_r = 50.1$; $\rho = 1000$ kg/m³

Phantom section: Flat Section

DASY4 Configuration:

- Probe: EX3DV4 - SN3548; ConvF(7.13, 7.13, 7.13); Calibrated: 19/01/2007
- Sensor-Surface: 2mm (Mechanical Surface Detection)
- Electronics: DAE3 Sn472; Calibrated: 07/03/2007
- Phantom: SAM 2; Type: SAM 4.0; Serial: 1080
- Measurement SW: DASY4, V4.7 Build 53; Postprocessing SW: SEMCAD, V1.8 Build 172

Middle/Area Scan (61x91x1): Measurement grid: dx=15mm, dy=15mm

[Info: Interpolated medium parameters used for SAR evaluation.](#)

Maximum value of SAR (interpolated) = 0.007 mW/g

Middle/Zoom Scan (5x5x7) (5x5x7)/Cube 0: Measurement grid: dx=7.5mm, dy=7.5mm, dz=5mm

Reference Value = 1.80 V/m; Power Drift = -0.043 dB

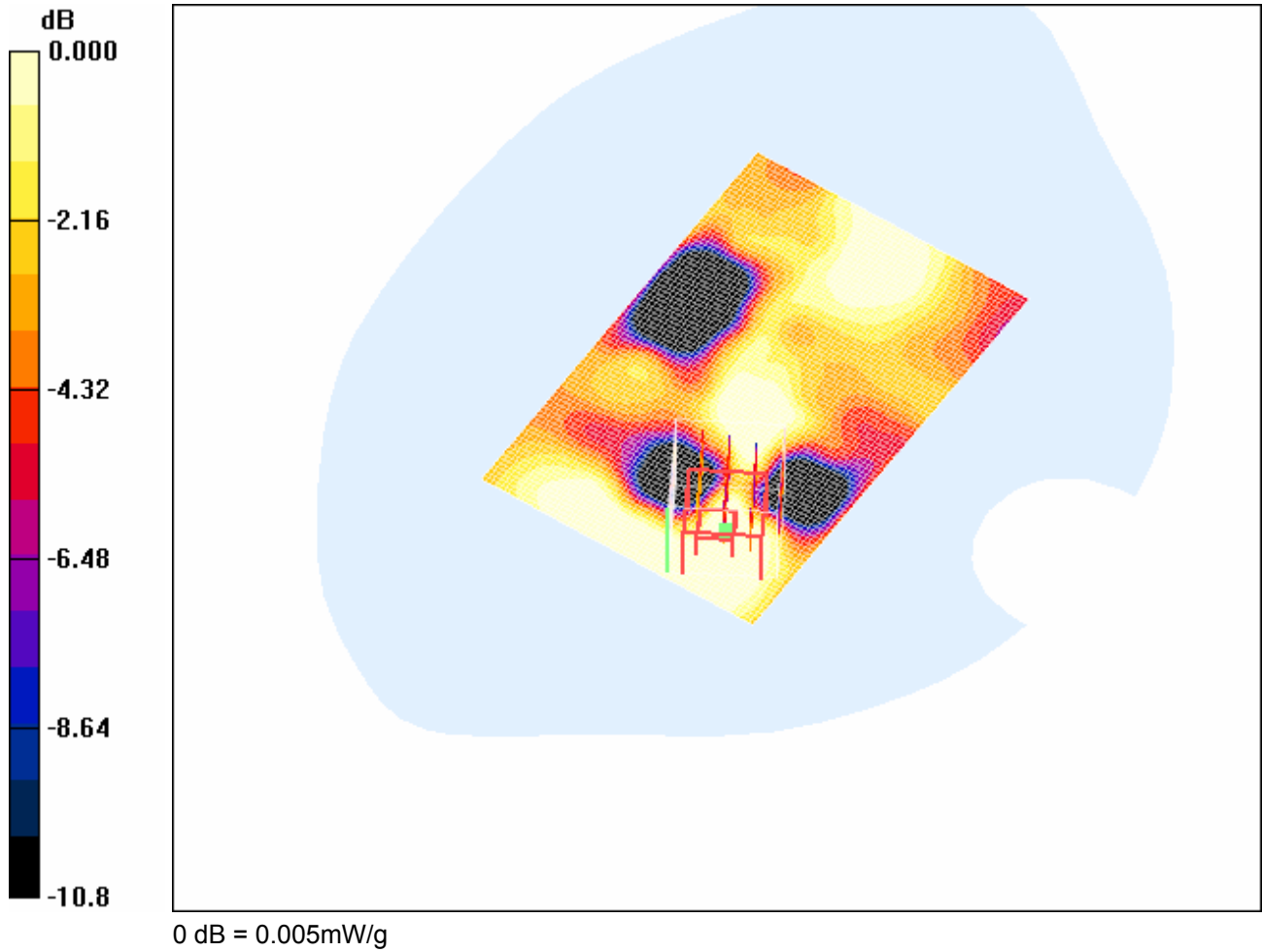
Peak SAR (extrapolated) = 0.011 W/kg

SAR(1 g) = 0.00428 mW/g; SAR(10 g) = 0.00236 mW/g

[Info: Interpolated medium parameters used for SAR evaluation.](#)

Maximum value of SAR (measured) = 0.005 mW/g

RTS RIM Testing Services	Document Appendices for the BlackBerry® SmartphoneModel RBJ41GW SAR Report		Page 74(78)
	Author Data Shahriar Ninad	Dates of Test May 23-June 01, 2007	Test Report No RTS-0510-0706-03



RTS RIM Testing Services	Document Appendices for the BlackBerry® Smartphone Model RBJ41GW SAR Report		Page 75(78)
	Author Data Shahriar Ninad	Dates of Test May 23-June 01, 2007	Test Report No RTS-0510-0706-03

Date/Time: 31/05/2007 10:58:42 AM

Test Laboratory: RTS

Body_25mm_back_802.11b_mid_Chan_Amb_Tem_24_4_Liq_Tem_23_2C

DUT: BlackBerry Smartphone; Type: Sample ; Serial: Not Specified

Communication System: 802.11 b (2450); Frequency: 2437 MHz; Duty Cycle: 1:1

Medium parameters used (interpolated): $f = 2437$ MHz; $\sigma = 1.97$ mho/m; $\epsilon_r = 50.1$; $\rho = 1000$ kg/m³

Phantom section: Flat Section

DASY4 Configuration:

- Probe: EX3DV4 - SN3548; ConvF(7.13, 7.13, 7.13); Calibrated: 19/01/2007
- Sensor-Surface: 2mm (Mechanical Surface Detection)
- Electronics: DAE3 Sn472; Calibrated: 07/03/2007
- Phantom: SAM 2; Type: SAM 4.0; Serial: 1080
- Measurement SW: DASY4, V4.7 Build 53; Postprocessing SW: SEMCAD, V1.8 Build 172

Middle/Area Scan (61x91x1): Measurement grid: dx=15mm, dy=15mm

[Info: Interpolated medium parameters used for SAR evaluation.](#)

Maximum value of SAR (interpolated) = 0.385 mW/g

Middle/Zoom Scan (5x5x7) (5x5x7)/Cube 0: Measurement grid: dx=7.5mm, dy=7.5mm, dz=5mm

Reference Value = 5.50 V/m; Power Drift = 0.009 dB

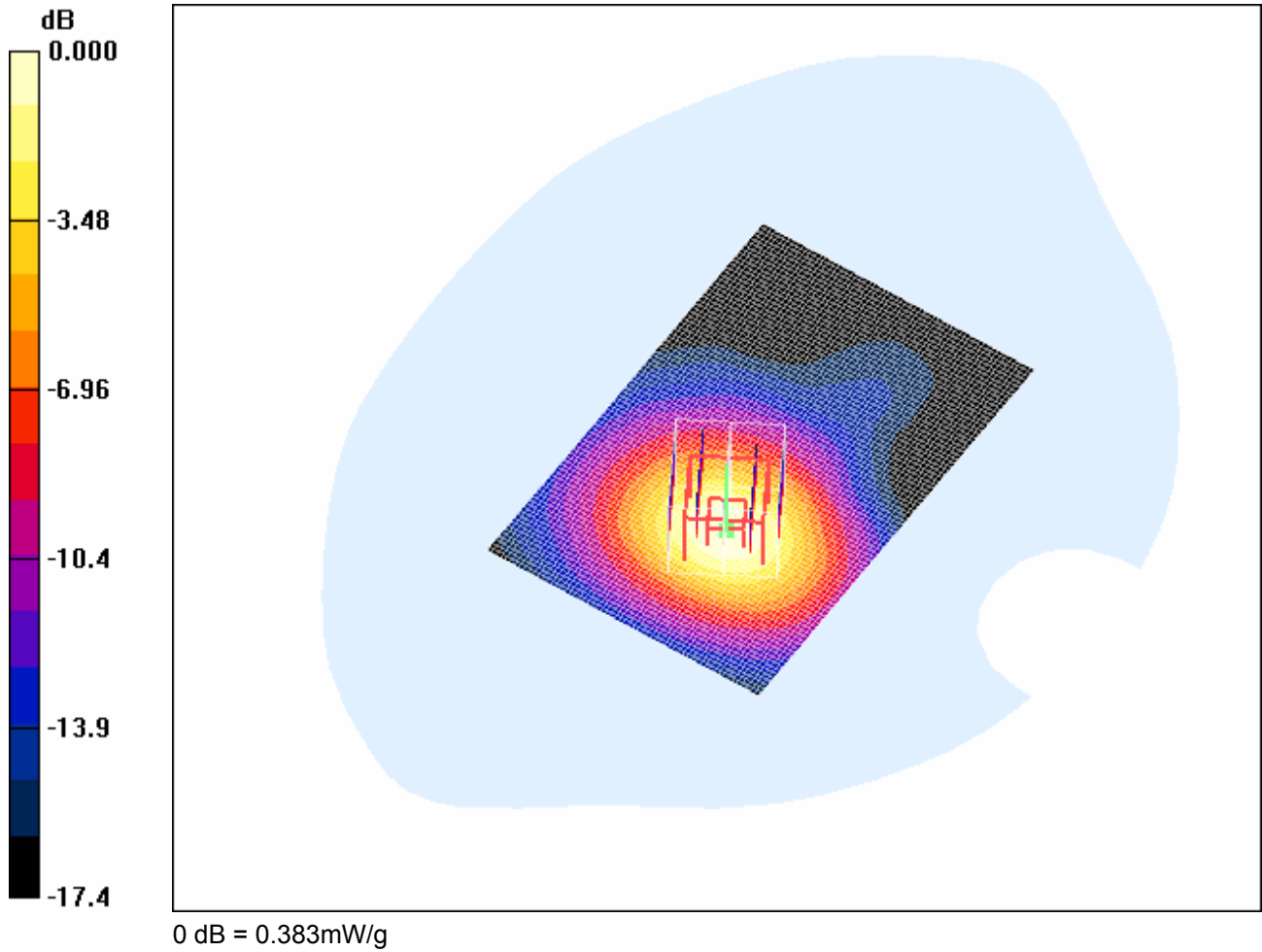
Peak SAR (extrapolated) = 0.479 W/kg

SAR(1 g) = 0.277 mW/g; SAR(10 g) = 0.151 mW/g

[Info: Interpolated medium parameters used for SAR evaluation.](#)

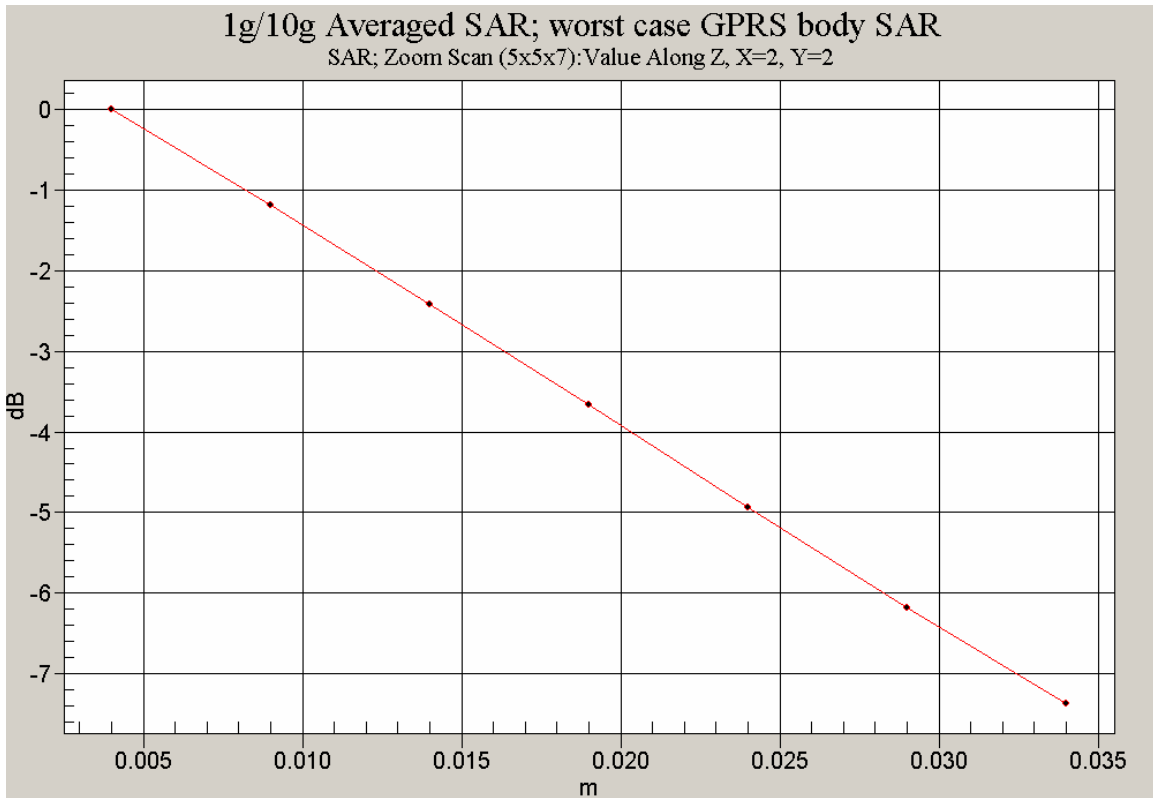
Maximum value of SAR (measured) = 0.383 mW/g

RTS RIM Testing Services	Document Appendices for the BlackBerry® SmartphoneModel RBJ41GW SAR Report		Page 76(78)
	Author Data Shahriar Ninad	Dates of Test May 23-June 01, 2007	Test Report No RTS-0510-0706-03



RTS RIM Testing Services	Document Appendices for the BlackBerry® SmartphoneModel RBJ41GW SAR Report		Page 77(78)
	Author Data Shahriar Ninad	Dates of Test May 23-June 01, 2007	Test Report No RTS-0510-0706-03

Z axis plots for the worst case body worn configuration:



RTS RIM Testing Services	Document Appendices for the BlackBerry® SmartphoneModel RBJ41GW SAR Report		Page 78(78)
	Author Data Shahriar Ninad	Dates of Test May 23-June 01, 2007	Test Report No RTS-0510-0706-03

