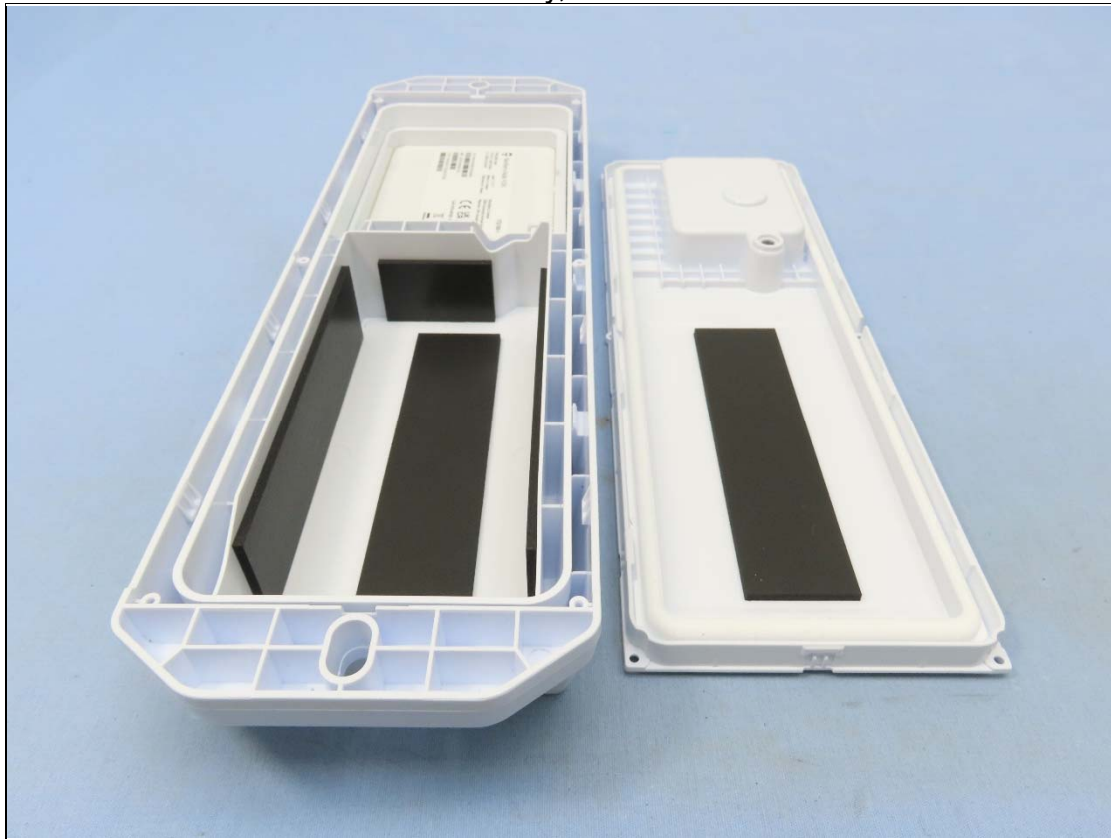
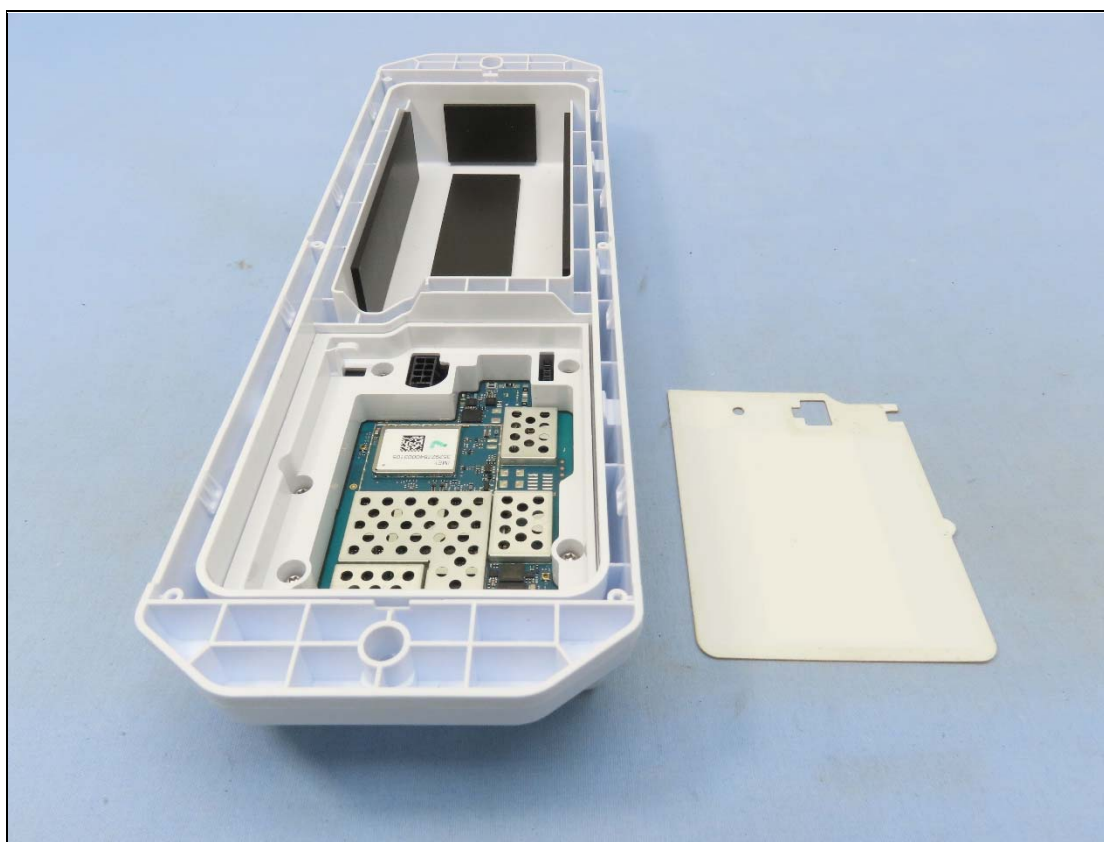
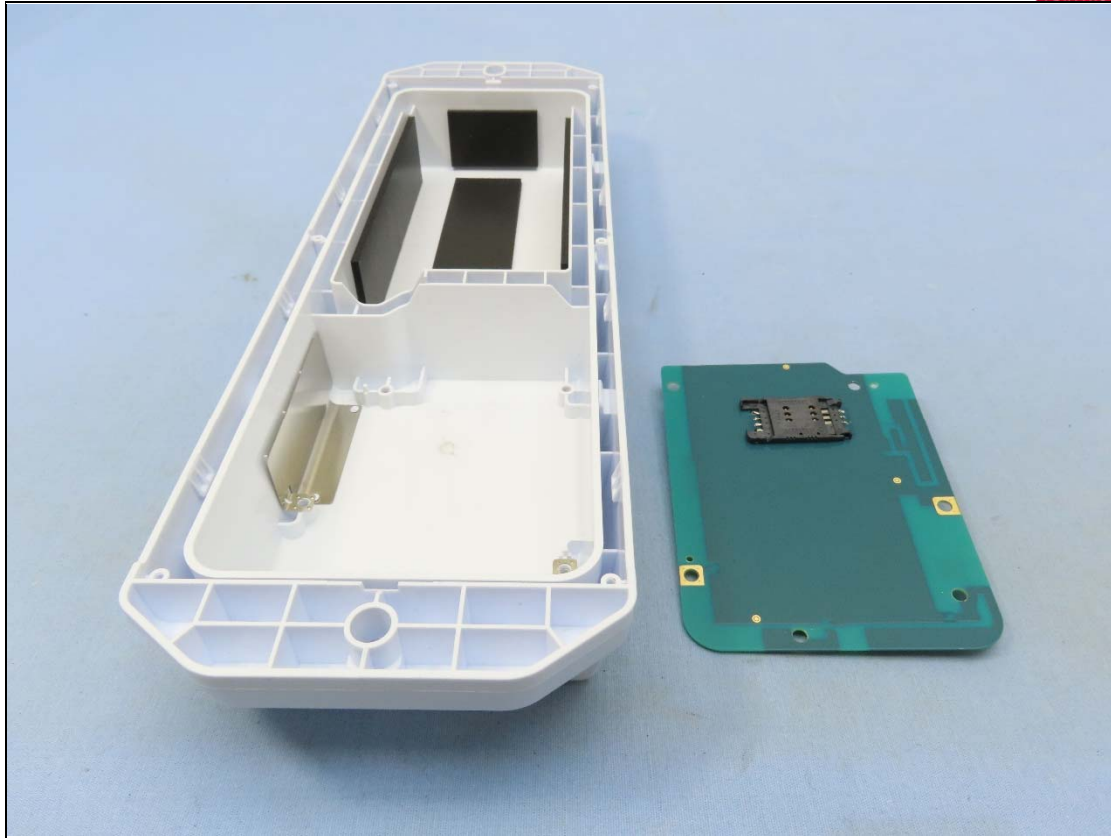


Brand: BlackBerry, Model: ITG100-1





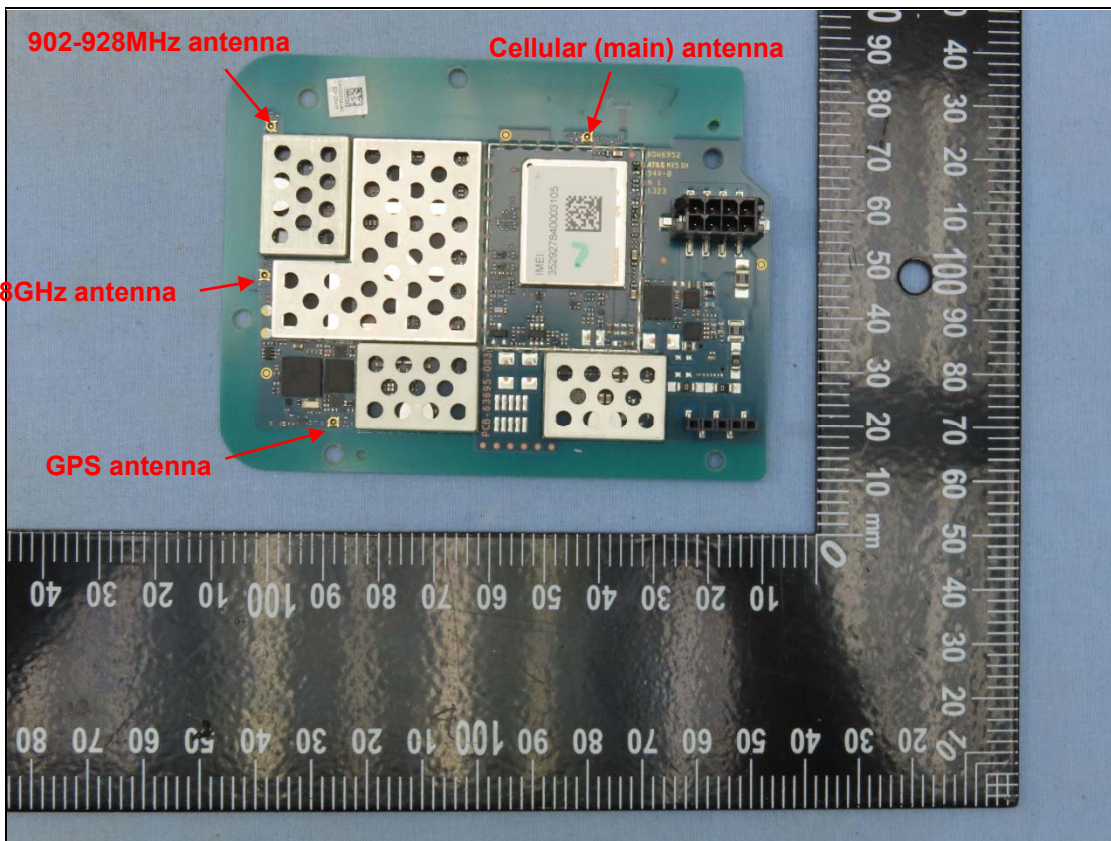


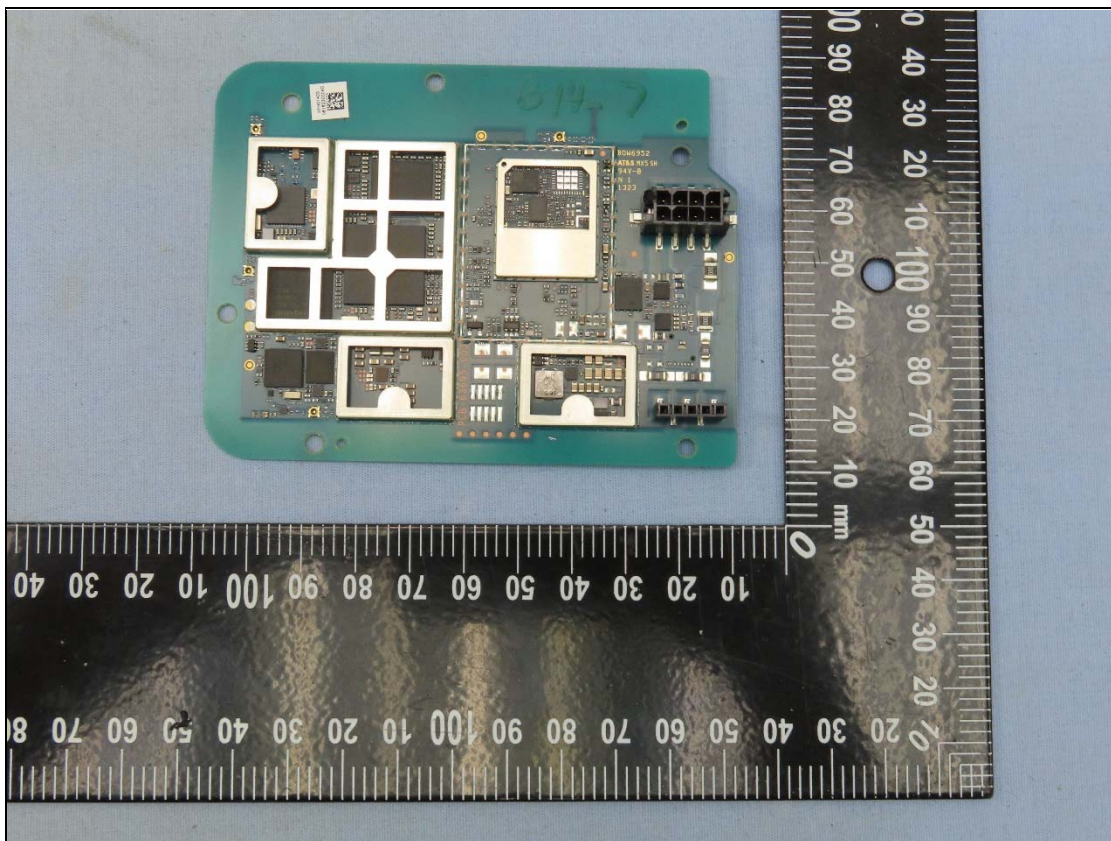
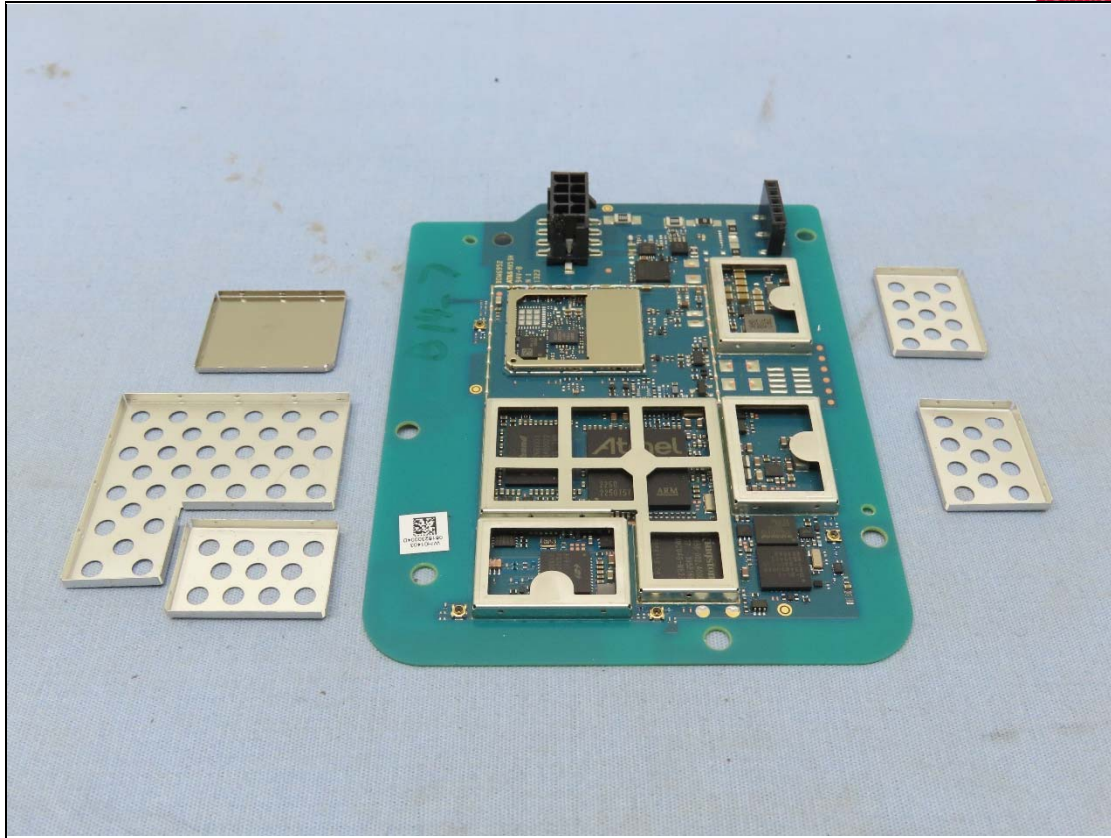
902-928MHz antenna

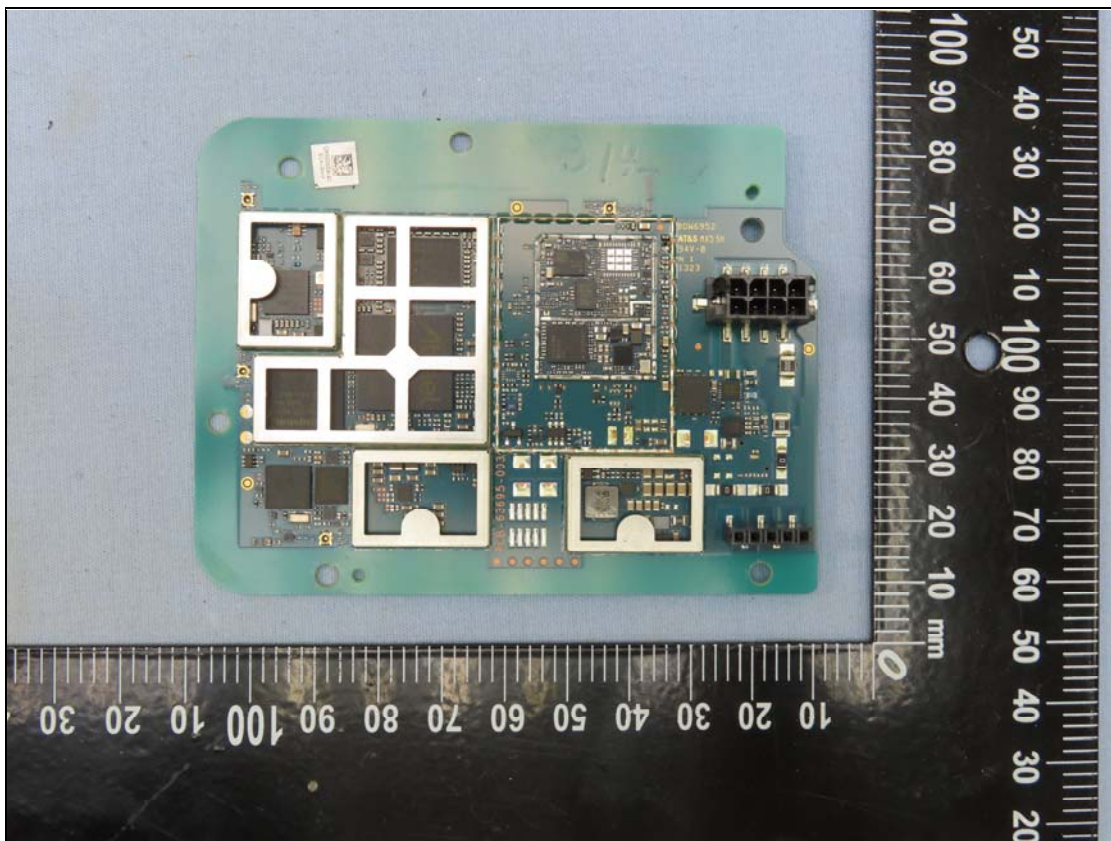
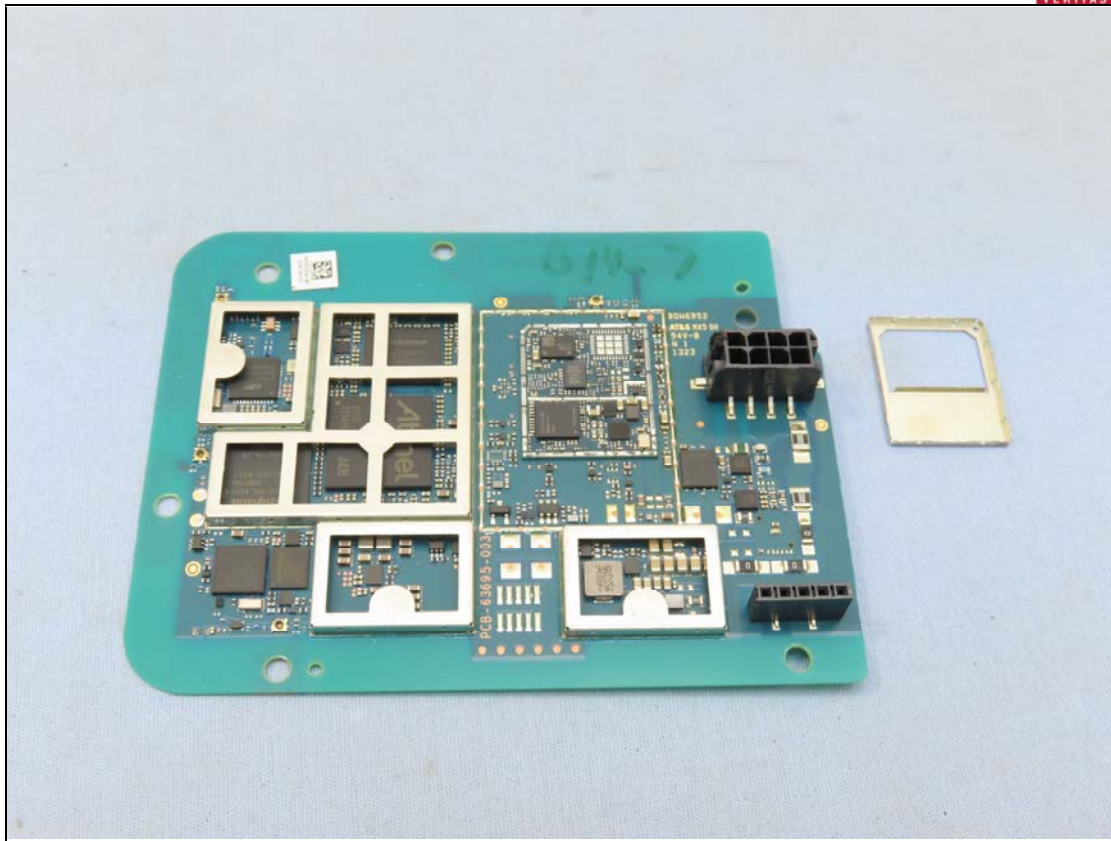
Cellular (main) antenna

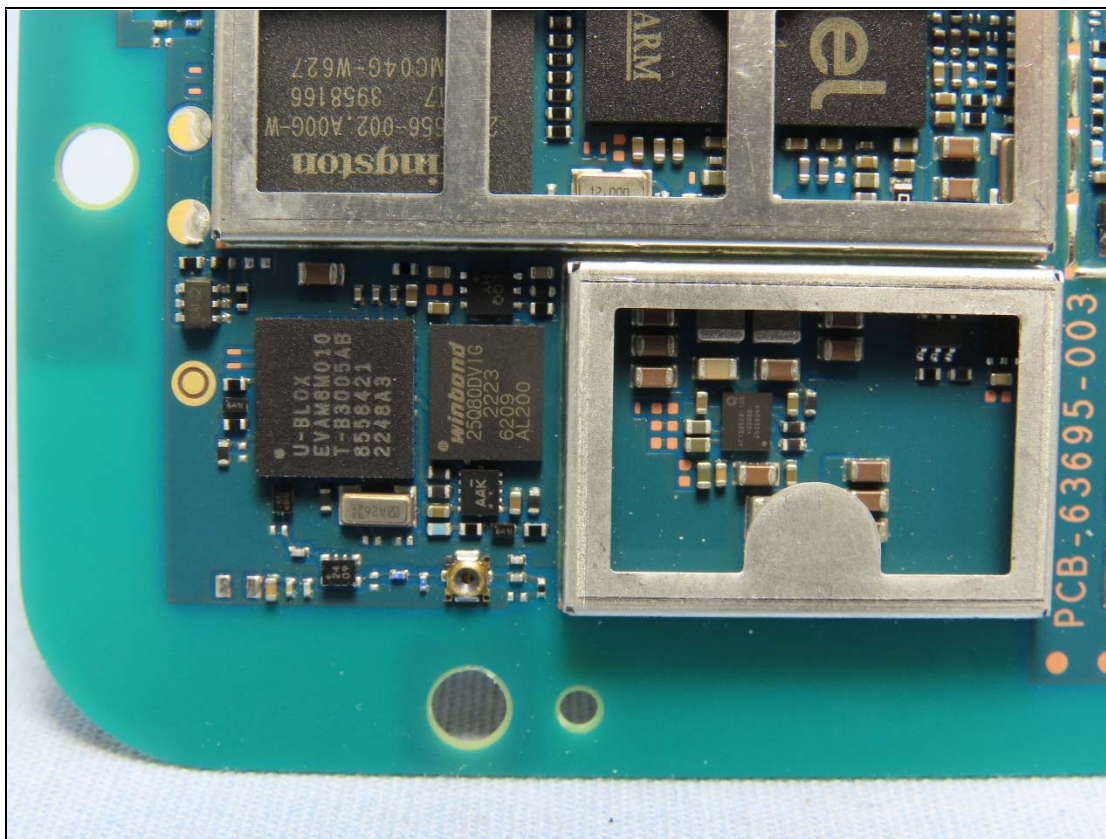
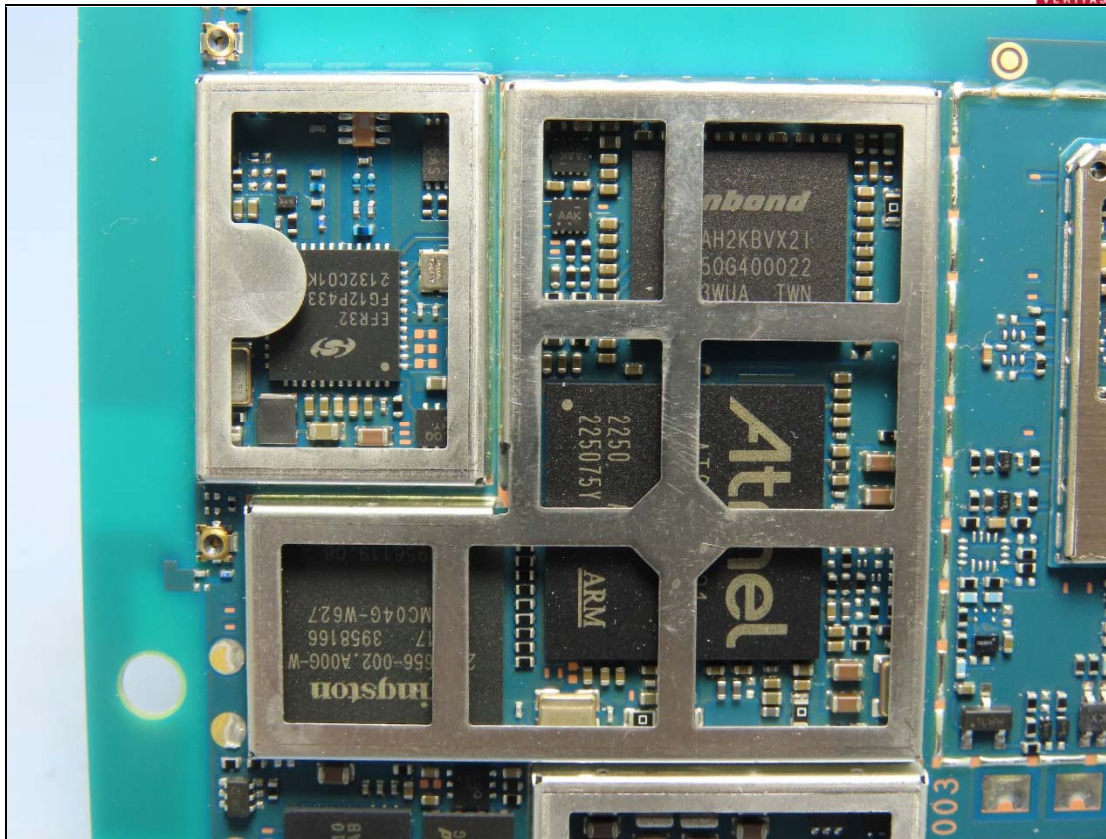
2.4-2.48GHz antenna

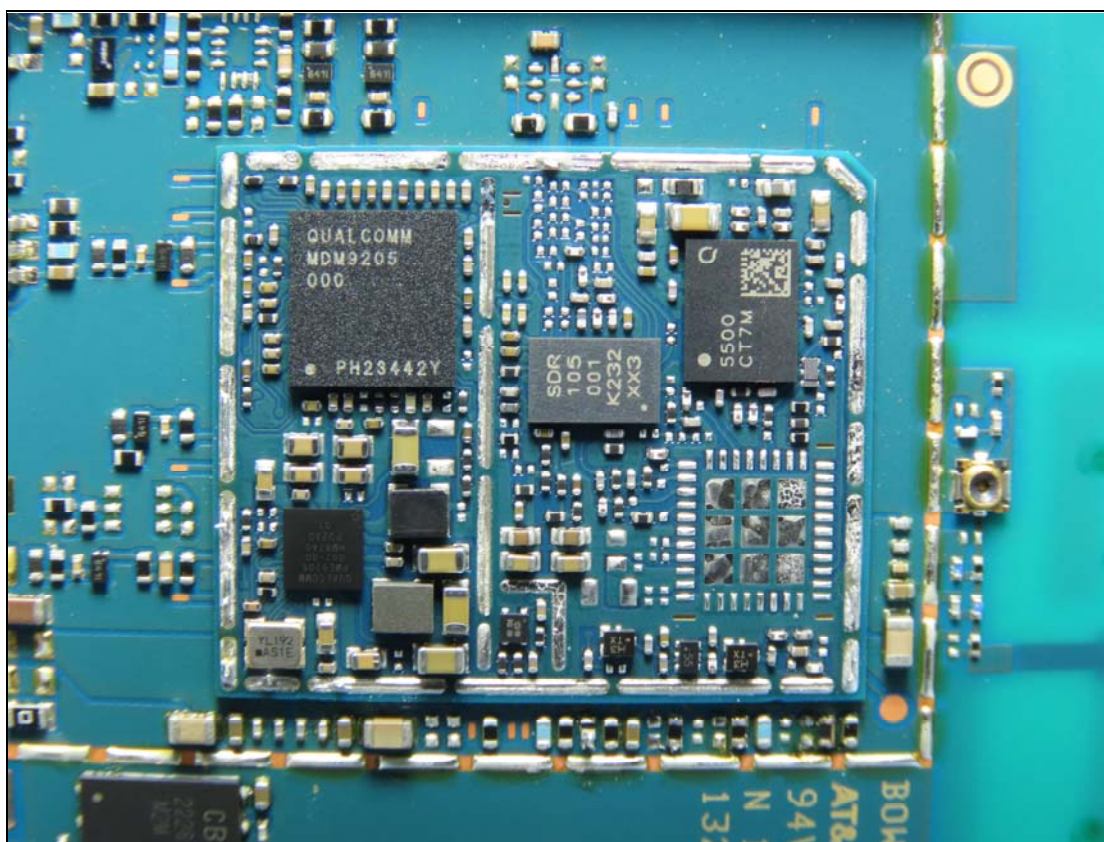
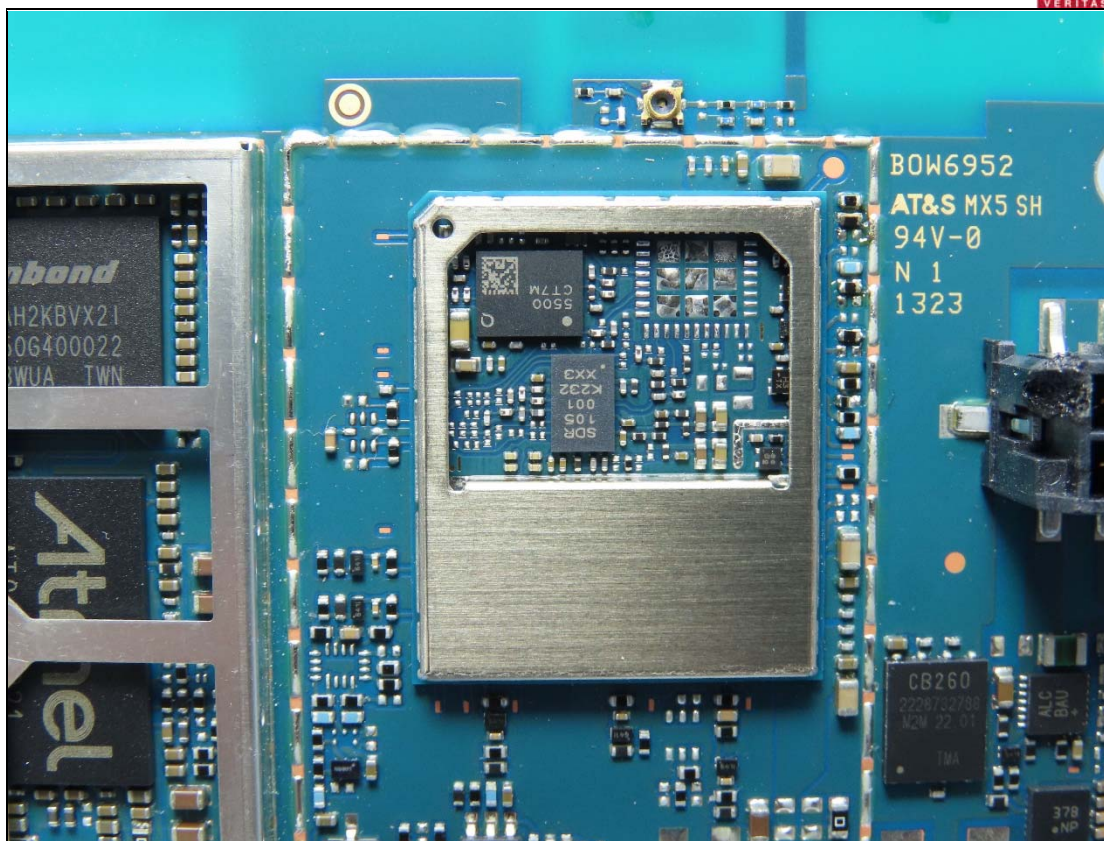
GPS antenna

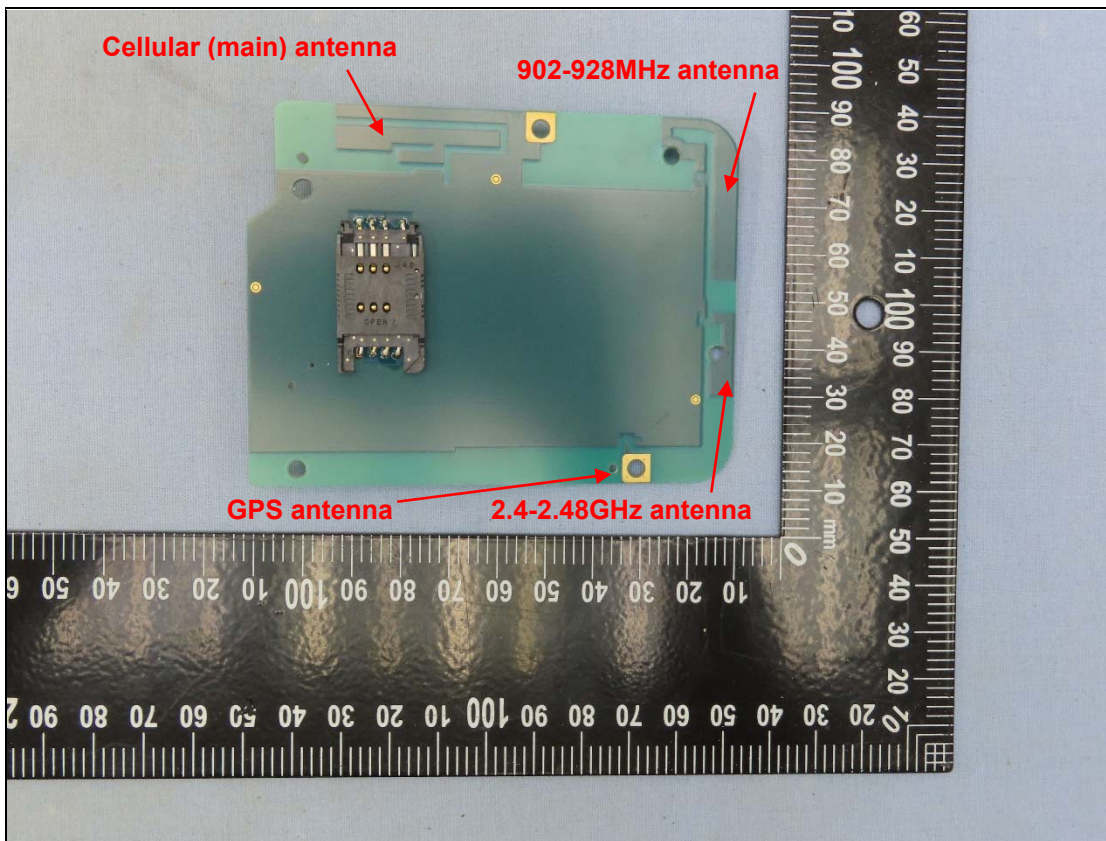
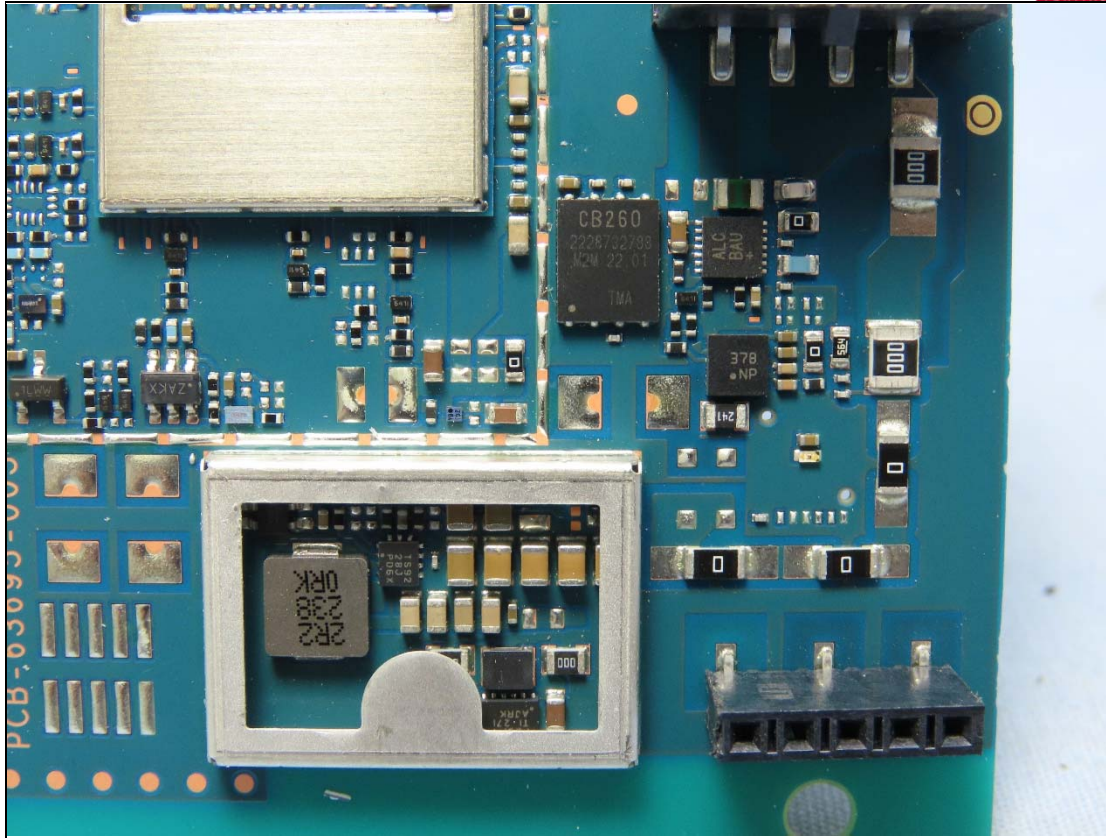


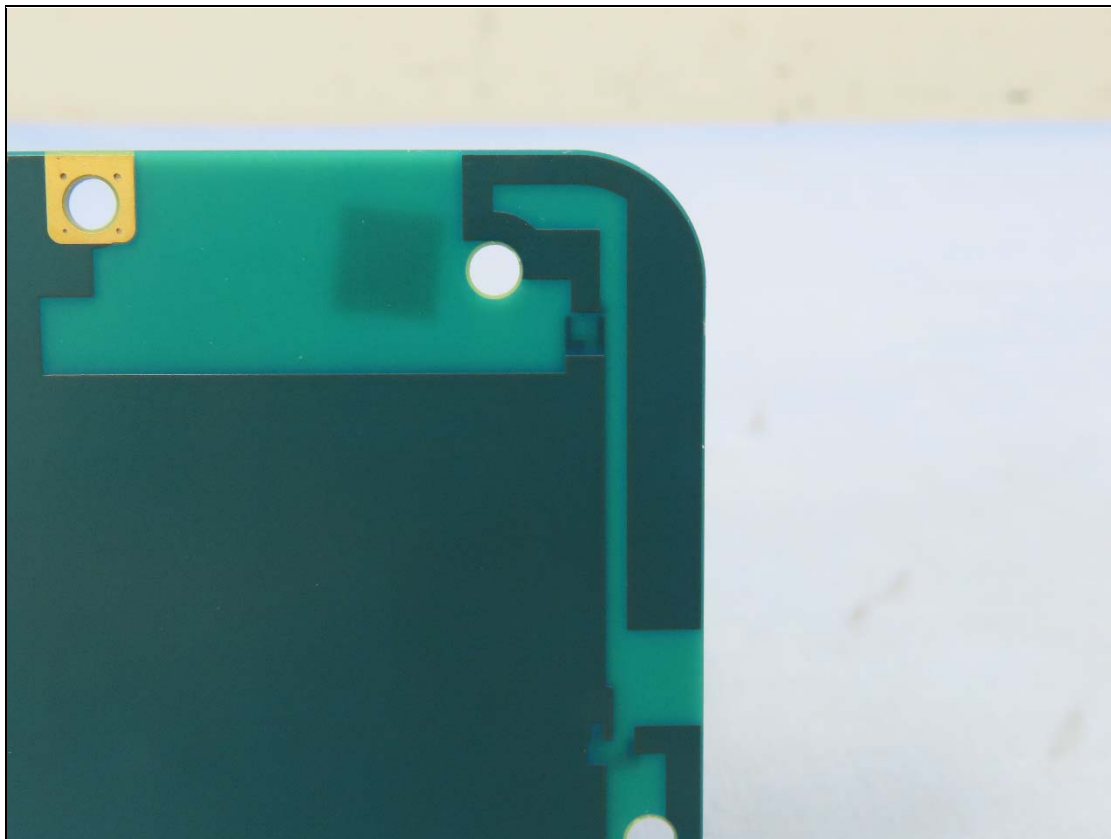
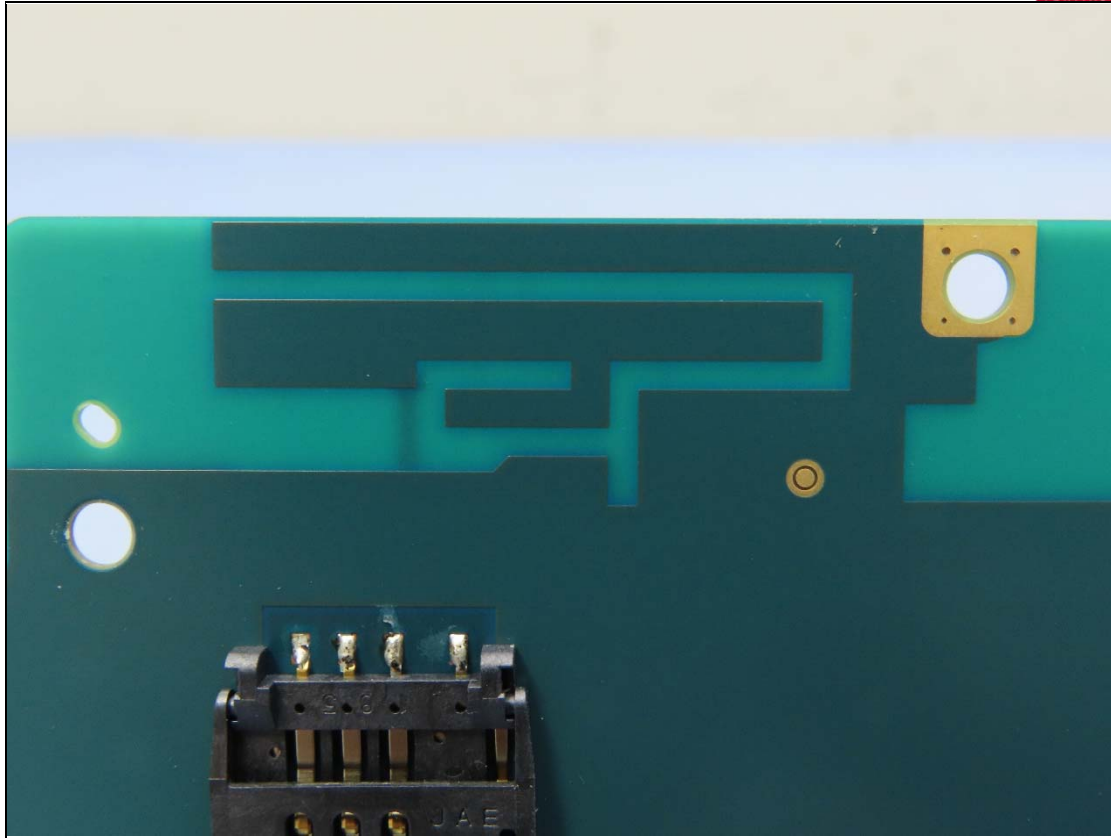


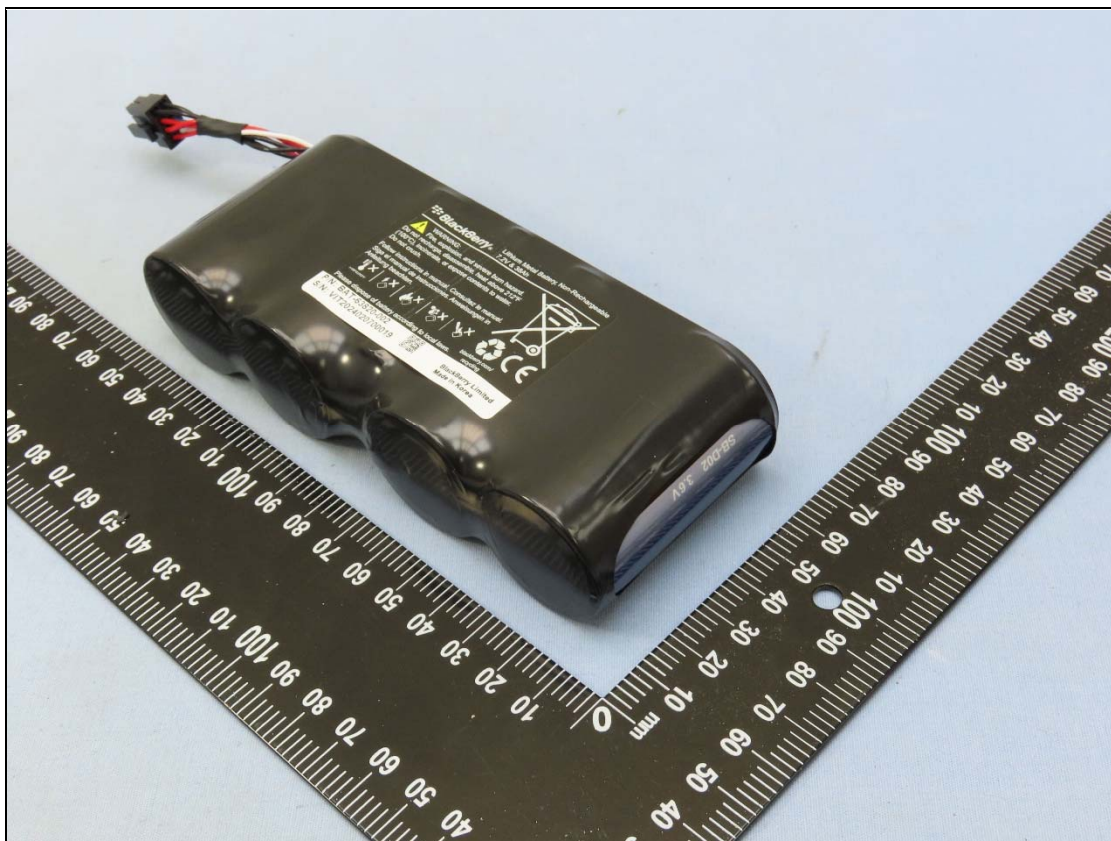
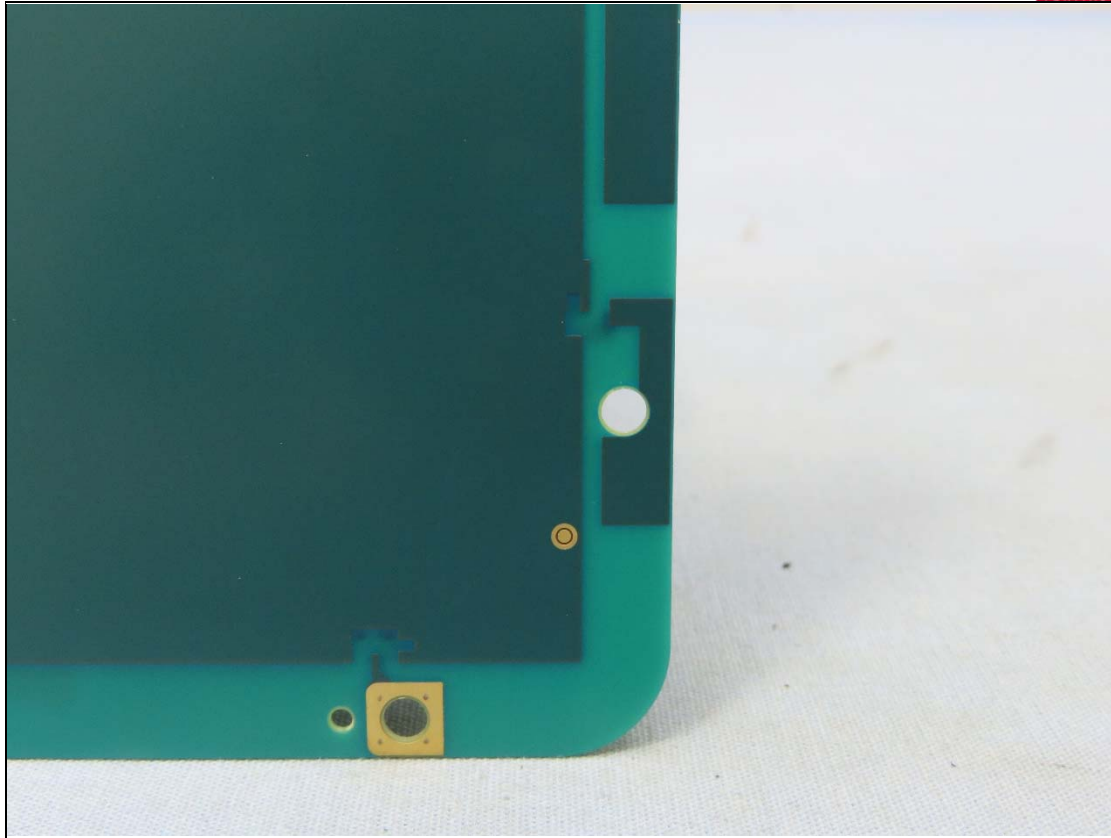


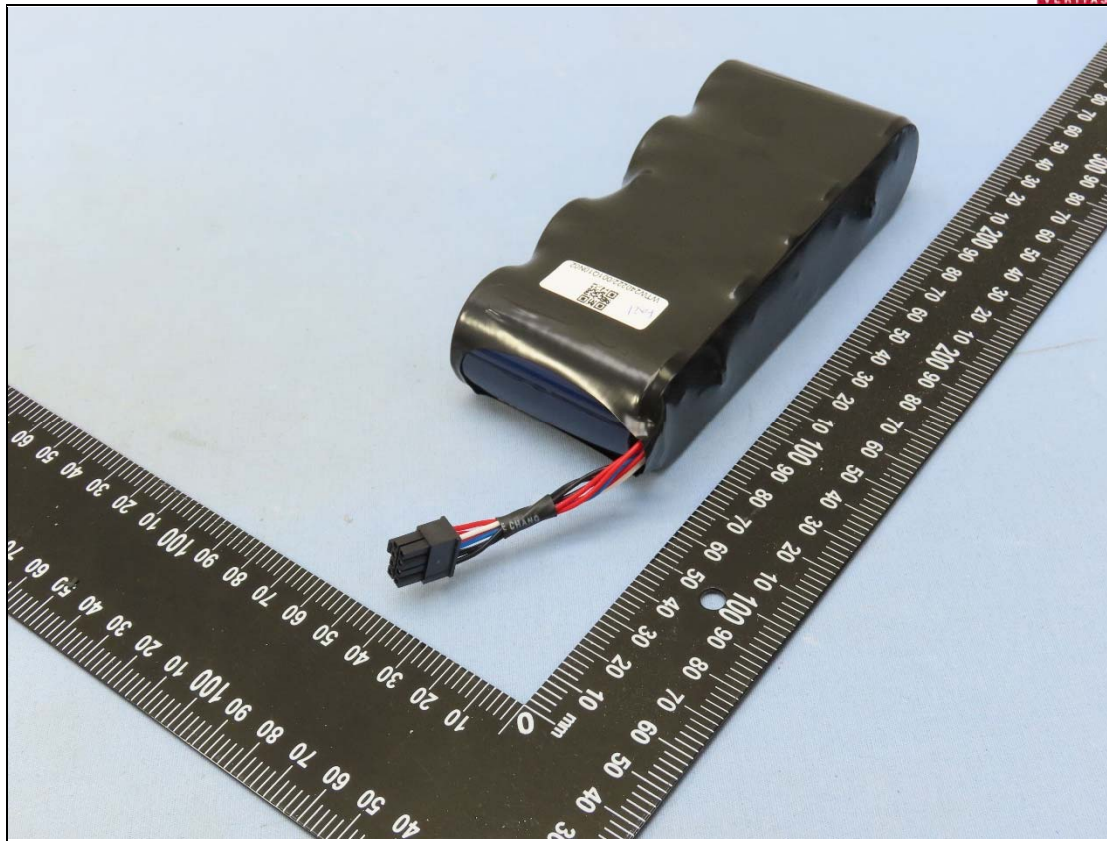


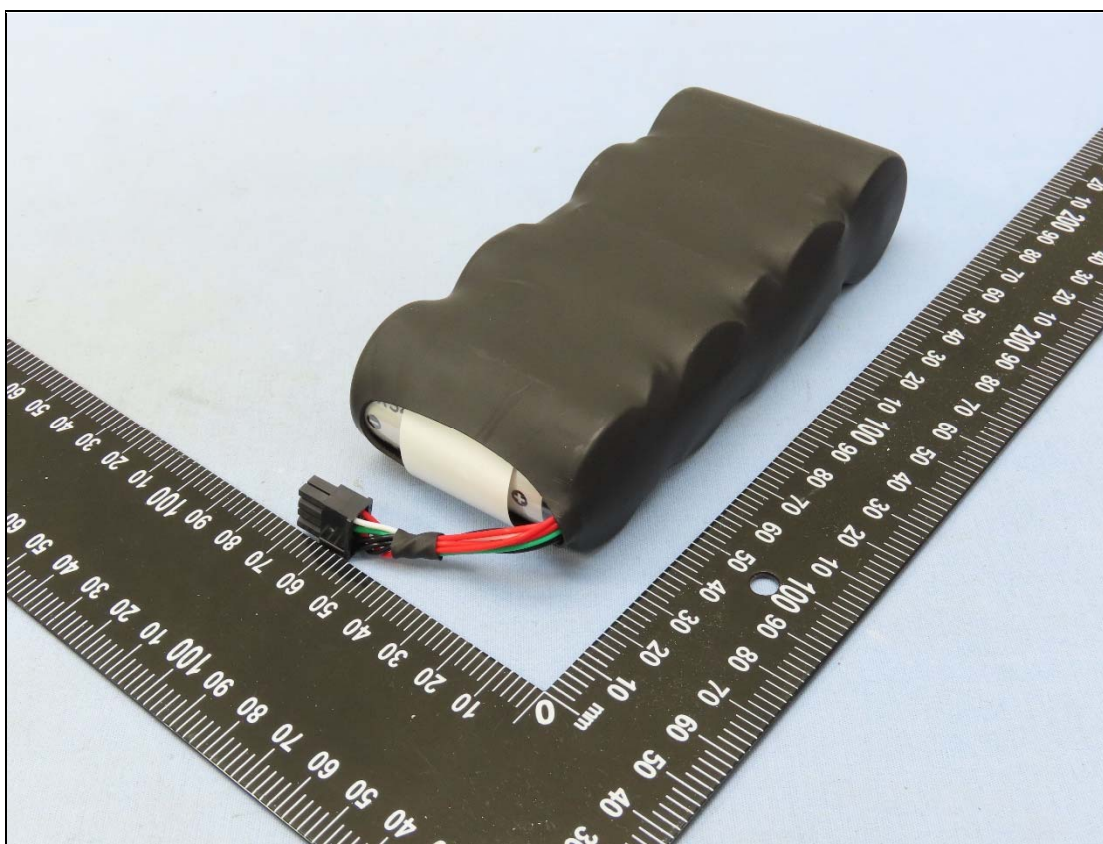
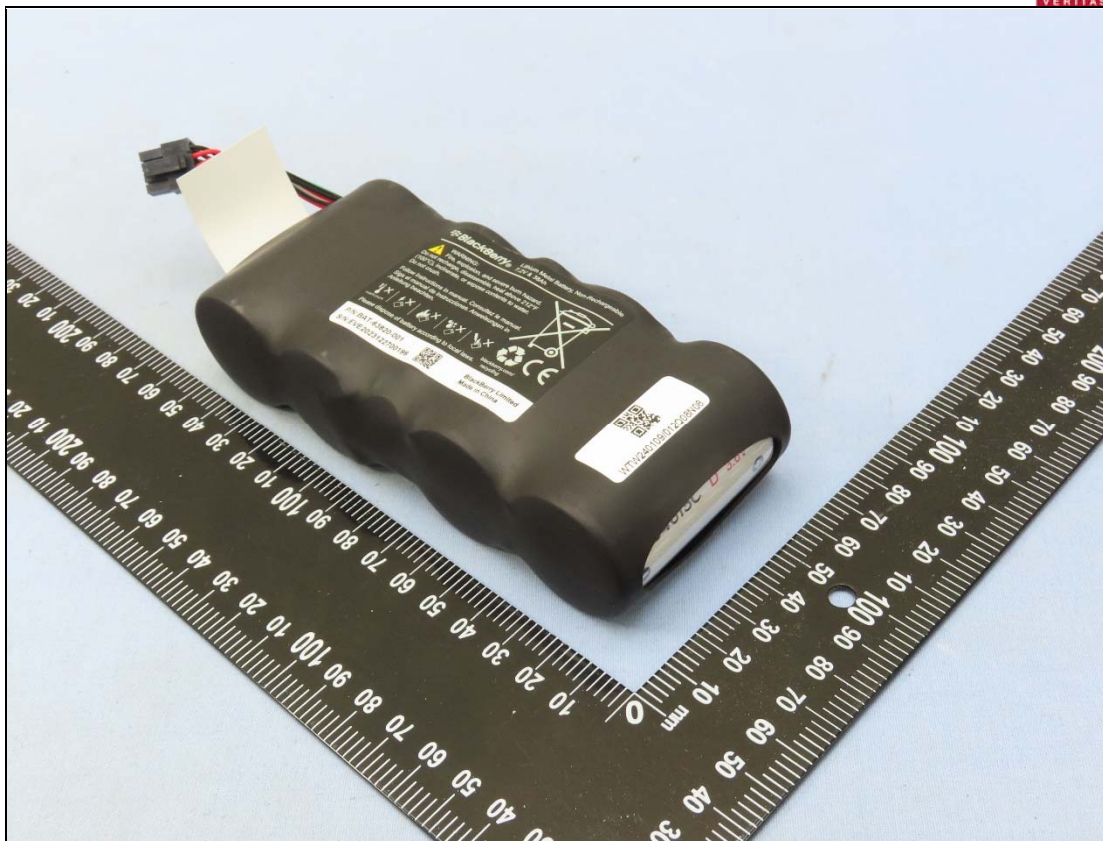












BlackBerry®

Lithium Metal Battery, Non-Rechargeable
7.2V & 38Ah



WARNING:

Fire, explosion, and severe burn hazard.
Do not recharge, disassemble, heat above 212°F
(100°C), incinerate, or expose contents to water.
Do not crush.

Follow instructions in manual. Consultez le manuel.
Siga el manual de instrucciones. Anweisungen in
Anleitung beachten.



Please dispose of battery according to local laws.



[blackberry.com/
recycling](http://blackberry.com/recycling)

P/N:BAT-63820-001
S/N:EVE2023122700196



BlackBerry Limited
Made in China