

| |
|---|
| Materials: PET (Zebra Print Label, White Label Stock) |
| Description: B001 Device Label Content_NA |
| Tolerance: +/- 0.15mm |
| Print: Pantone Process Black C |
| Finish: N/A |

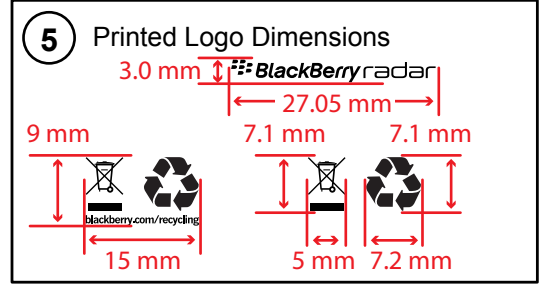
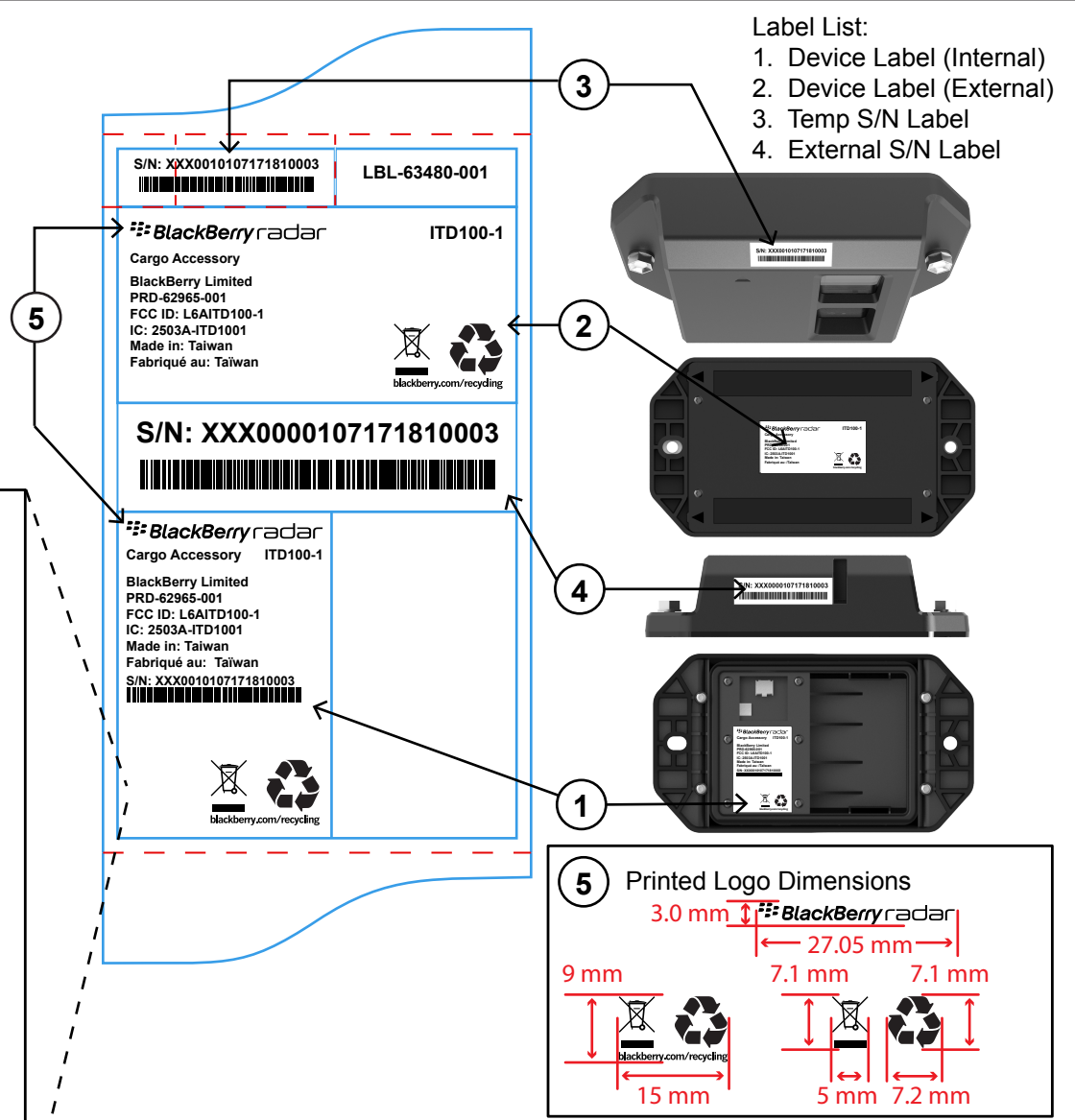
- PANTONE PROCESS BLACK C
- DIELINE (DO NOT PRINT)
- PERFORATION

Serial Number Specification:
MFG Site - MFG
Variant - VVV
Revision - RR
Month - MM
Day - DD
Year - YY
Serial Number - XXXXX - Shall be HEXADECIMAL

Final Format: MFGVVVRRMMDDYYXXXXX



ADVANCE PRINT
Date : 2018-12-03



| | | | | |
|--|---------------|---|-------------------------------|------------|
| A | ECN-XXXXX | INITIAL | CC | 2018-12-03 |
| REV | ECN | CHANGES | DFTS | DATE |
| Software: Illustrator CS6 | | BlackBerry | BlackBerry LTD. | |
| Material: Refer to mechanical specifications | | | WATERLOO, ONTARIO CANADA | |
| Colors: Pantone Spot Colors as specified in Notes section. | | PH:(519) 888-7465, FAX:(519) 888-6906 | | |
| APPROVALS | | THE CONTENT OF THIS DOCUMENT IS BLACKBERRY INTELLECTUAL PROPERTY. IT IS CONFIDENTIAL AND IS NOT TO BE DISCLOSED, REPRODUCED OR USED EXCEPT WITH THE WRITTEN PERMISSION OF BLACKBERRY. COPYRIGHT 2018. BLACKBERRY LTD. | | |
| NAME DATE | | | | |
| DRAWN BY | Cortez Corley | 2018-12-03 | PROJECT: B001 | |
| ENG | | | NAME: DEVICE LABEL CONTENT_NA | |
| MFG | | | SCALE N/A | |
| MKTG | | | SHEET 1 OF 1 | |
| LEGAL | | | LBL-63480-001 | |
| SUPERSEDES | | | | |
| SUPSD BY | | | A | |

Note: All materials and processes must be ROHS compliant.