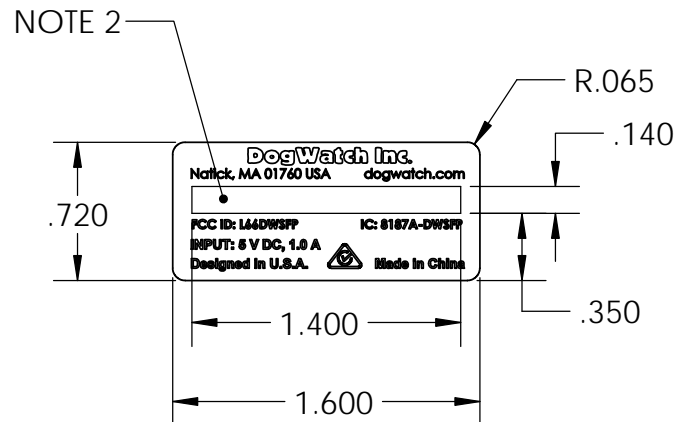


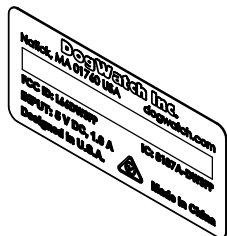
REV	DESCRIPTION	ECN #	DATE	APPROVED
0	ORIGINATE	-	4/25/2016	JT MACD
1	CHANGE MATERIAL, REMOVE DASH	-	5/5/2016	JT MACD
2	-	-	-	-
-	-	-	-	-
-	-	-	-	-

NOTES:

1. MATERIAL: .003 THICK POLYESTER OR MYLAR WITH ACRYLIC ADHESIVE ONE SIDE WITH LINER, KISS-CUT AND WASTE REMOVED AND ROLLED ON A 3.0 INCH ID CORE.
2. COLORS: BLACK BACKGROUND, SILVER TEXT AND SILVER CENTER RECTANGLE FOR MODEL NUMBER AND SERIAL NUMBER PRINTING.
3. SUGGEST TWO LABELS PER ROW, HORIZONTAL ACROSS WIDTH OF TAPE.
4. PLEASE FORWARD ARTWORK TO DOGWATCH FOR APPROVAL.



SERIAL # CODE & EXAMPLE
MODEL-YR-WK-UNIT
EXAMPLE: MODEL SFP10 16181234



PROPRIETARY AND CONFIDENTIAL
THE INFORMATION CONTAINED IN THIS DRAWING IS THE SOLE PROPERTY OF DOGWATCH INC.. ANY REPRODUCTION IN PART OR AS A WHOLE WITHOUT THE WRITTEN PERMISSION OF DOGWATCH INC IS PROHIBITED.

		UNLESS OTHERWISE SPECIFIED:		NAME	DATE	DogWatch Inc., 10 Michigan Drive, Natick, MA 01760 USA 1-800-793-3436 www.dogwatch.com		
		DIMENSIONS ARE IN INCHES TOLERANCES: FRACTIONAL ± ANGULAR: ± 1 DEGREE TWO PLACE DECIMAL ±.02 THREE PLACE DECIMAL ±.005	DRAWN	JTM	4/25/2016	TITLE: LABEL, SERIAL #, SMART FENCE PORTAL		
			CHECKED	-	-			
			ENG APPR.	-	-			
			MFG APPR.	-	-			
		INTERPRET GEOMETRIC TOLERANCING PER:	Q.A.	-	-	COMMENTS:		
50413XXX	SMART PORTAL	MATERIAL -						
NEXT ASSY	USED ON	FINISH -						
APPLICATION		DO NOT SCALE DRAWING				SIZE A	DWG. NO. 300605	REV 1
						NO SCALE	-	SHEET 1 OF 1