

File : c:/idx3/SYSTEM/SARMEAS3/data/Normal/99012005_ZOOM.VLT
Start : 20-Jan-99 12:21:54 pm End : 20-Jan-99 12:36:28 pm

Radio Type : SONY
Model Number : CMZS300
Serial Number : 002
Frequency : 1851.25 MHz
Peak Trans. Pwr : 0.450 W
Start Trans. Pwr : 0.450 W
Antenna Type : Helical
Antenna Posn. : In
Phantom Type : Head
Phantom Posn. : Left Ear
Scan Type : ZOOM/SAR
Probe Name : PCTEST
Field Type : E Field
Orientation : 0 Degrees

Mixture Type = Brain
Mixture Dielectric Constant = 42.900
Mixture Conductivity = 1.650

Comment :
SONY PCS PHONE WITH 50MM ANTENNA
CHANNEL 0025 PCS MODE
PCTEST

Robot : PCTEST

Probe Offset = 0.25 cm
Sensor Factor = 0.0108
Conversion Factor = 1.200

PCTEST Amplifier Channel Settings : 0.250 0.233 0.225

Max Location : X = 0.750, Y = 1.000, Z = 0.000 (cm) Value = 12.427

Measured Values (volts) =
1.221E-002 8.688E-003 6.260E-003 4.615E-003 3.436E-003 2.690E-003
2.066E-003 1.553E-003 1.136E-003 8.919E-004 6.837E-004 5.573E-004
3.816E-004 3.030E-004 2.500E-004 1.878E-004 1.605E-004 1.007E-004
1.008E-004 7.196E-005 6.280E-005

Calc. Voltage @ Surface (Vs) = 0.0171

Voltage @ 1.00 cm (Vt) = 0.0046

Ave. Voltage (Vs+Vt)/2 = 0.0108

Ave. SAR over 1 g (mW/g) = 1.2040

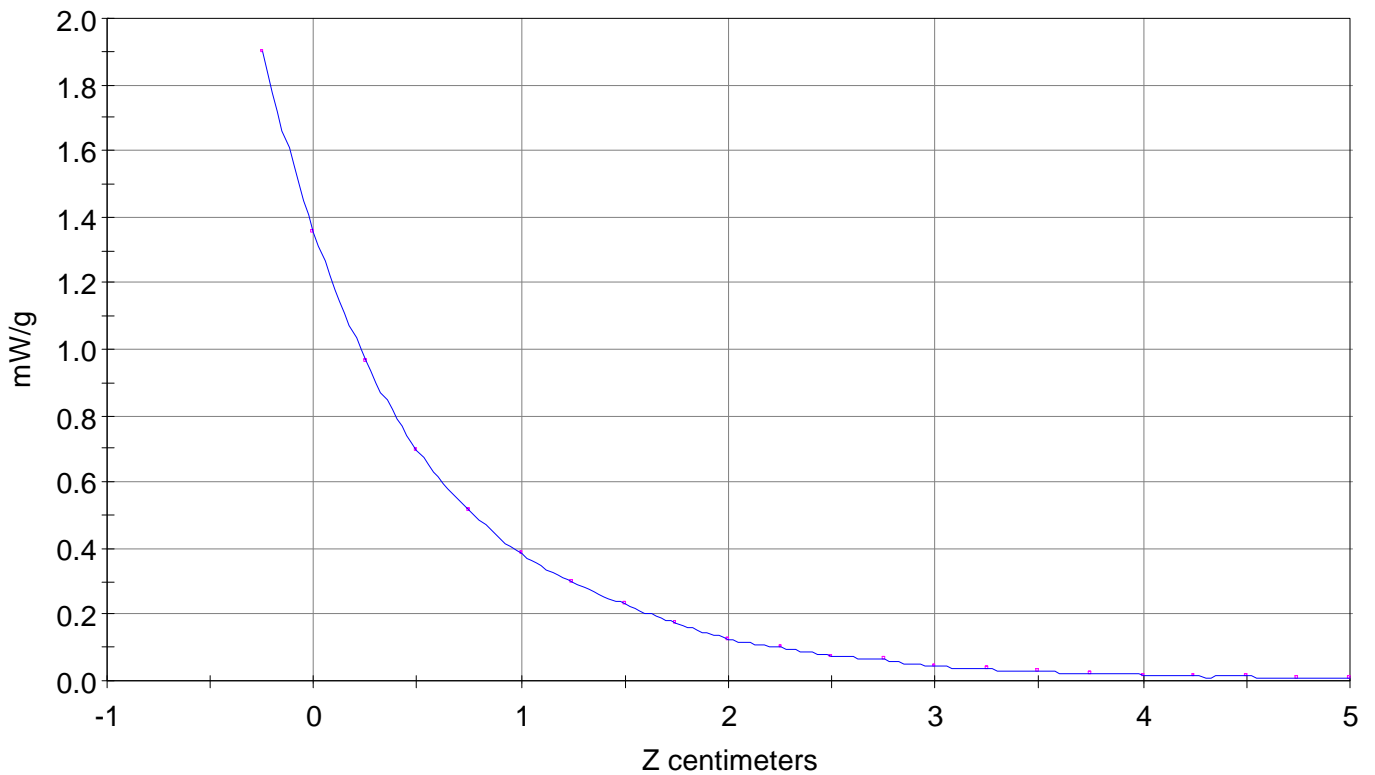
SAR Scan

File : 99012005_ZOOM

Start : 20-Jan-99 12:21:54 pm End : 20-Jan-99 12:36:28 pm

SONY/CMZS300/002;1851.25MHz;W;Helical/In;

Head/Left Ear;ZOOM/SAR;PCTEST/E Field/0 DegreesBrain/42.900/1.650

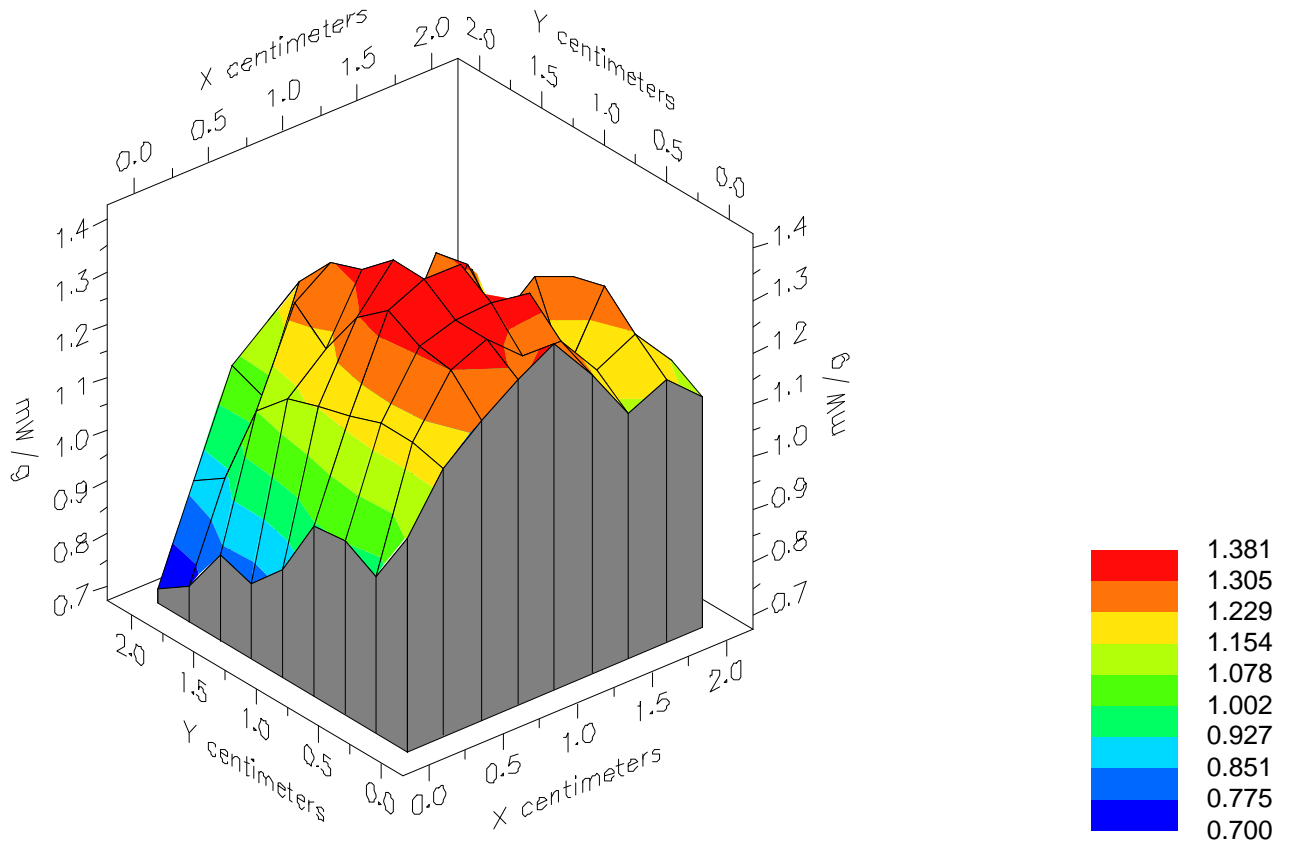


File : 99012005_ZOOM

Start : 20-Jan-99 12:21:54 pm End : 20-Jan-99 12:36:28 pm

SONY/CMZS300/002;1851.25MHz;W;Helical/In;

Head/Left Ear;ZOOM/SAR;PCTEST/E Field/0 DegreesBrain/42.900/1.650

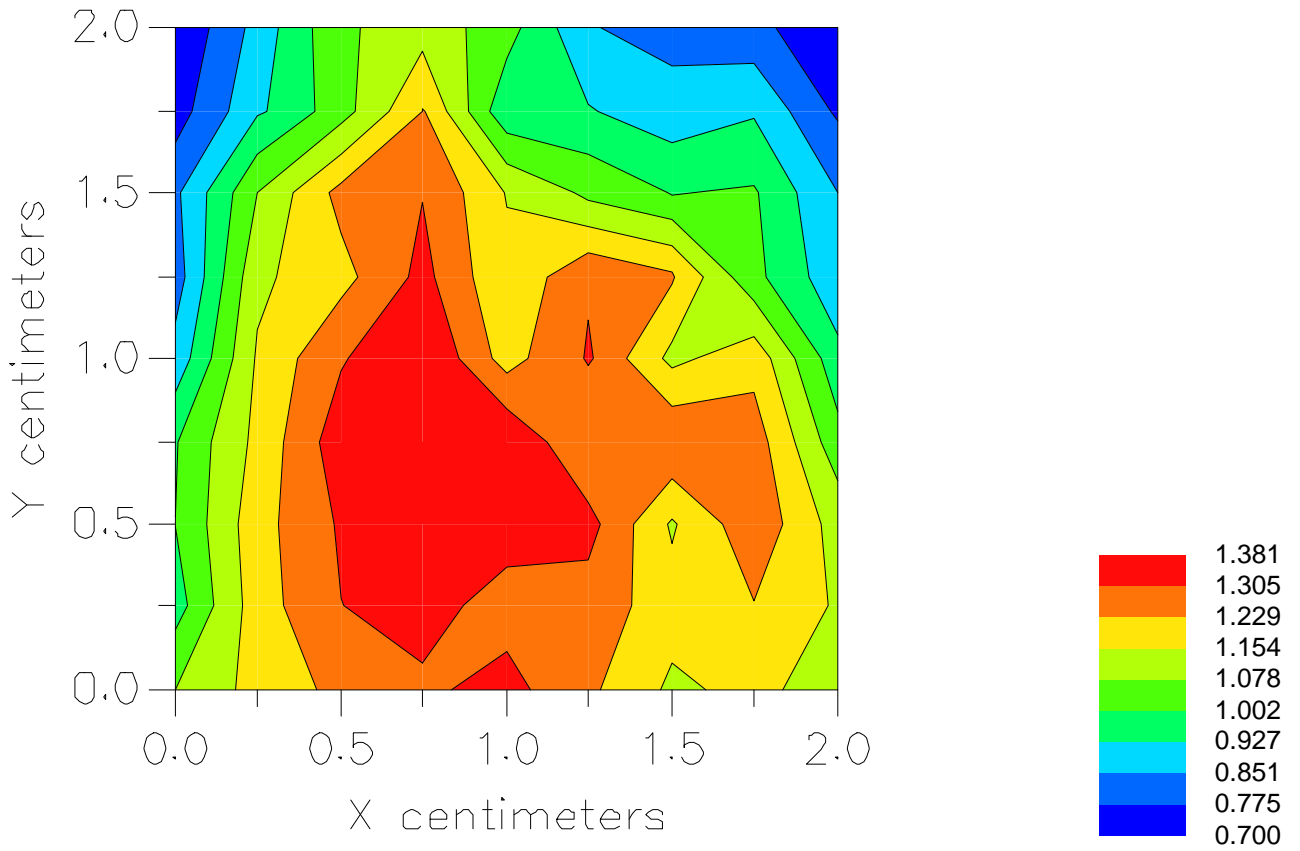


File : 99012005_ZOOM

Start : 20-Jan-99 12:21:54 pm End : 20-Jan-99 12:36:28 pm

SONY/CMZS300/002;1851.25MHz;W;Helical/In;

Head/Left Ear;ZOOM/SAR;PCTEST/E Field/0 DegreesBrain/42.900/1.650



File : c:/idx3/SYSTEM/SARMEAS3/data/Normal/99012006_ZOOM.VLT
Start : 20-Jan-99 12:49:43 pm End : 20-Jan-99 12:58:10 pm

Radio Type : SONY
Model Number : CMZS300
Serial Number : 002
Frequency : 1851.25 MHz
Peak Trans. Pwr : 0.450 W
Start Trans. Pwr : 0.450 W
Antenna Type : Helical
Antenna Posn. : Out
Phantom Type : Head
Phantom Posn. : Left Ear
Scan Type : ZOOM/SAR
Probe Name : PCTEST
Field Type : E Field
Orientation : 0 Degrees

Mixture Type = Brain
Mixture Dielectric Constant = 42.900
Mixture Conductivity = 1.650

Comment :
SONY PCS PHONE
CHANNEL 0025 PCS MODE
PCTEST

Robot : PCTEST

Probe Offset = 0.25 cm
Sensor Factor = 0.0108
Conversion Factor = 1.200

PCTEST Amplifier Channel Settings : 0.250 0.233 0.225

Max Location : X = 0.750, Y = 0.750, Z = 0.000 (cm) Value = 5.301

Measured Values (volts) =
4.933E-003 3.592E-003 2.323E-003 1.955E-003 1.287E-003 1.037E-003
7.781E-004 6.118E-004 4.694E-004 3.475E-004 2.609E-004 2.193E-004
1.875E-004 1.513E-004 1.178E-004 8.499E-005 1.077E-004 7.087E-005
5.295E-005 4.676E-005 7.226E-005

Calc. Voltage @ Surface (Vs) = 0.0072

Voltage @ 1.00 cm (Vt) = 0.0020

Ave. Voltage (Vs+Vt)/2 = 0.0046

Ave. SAR over 1 g (mW/g) = 0.5086

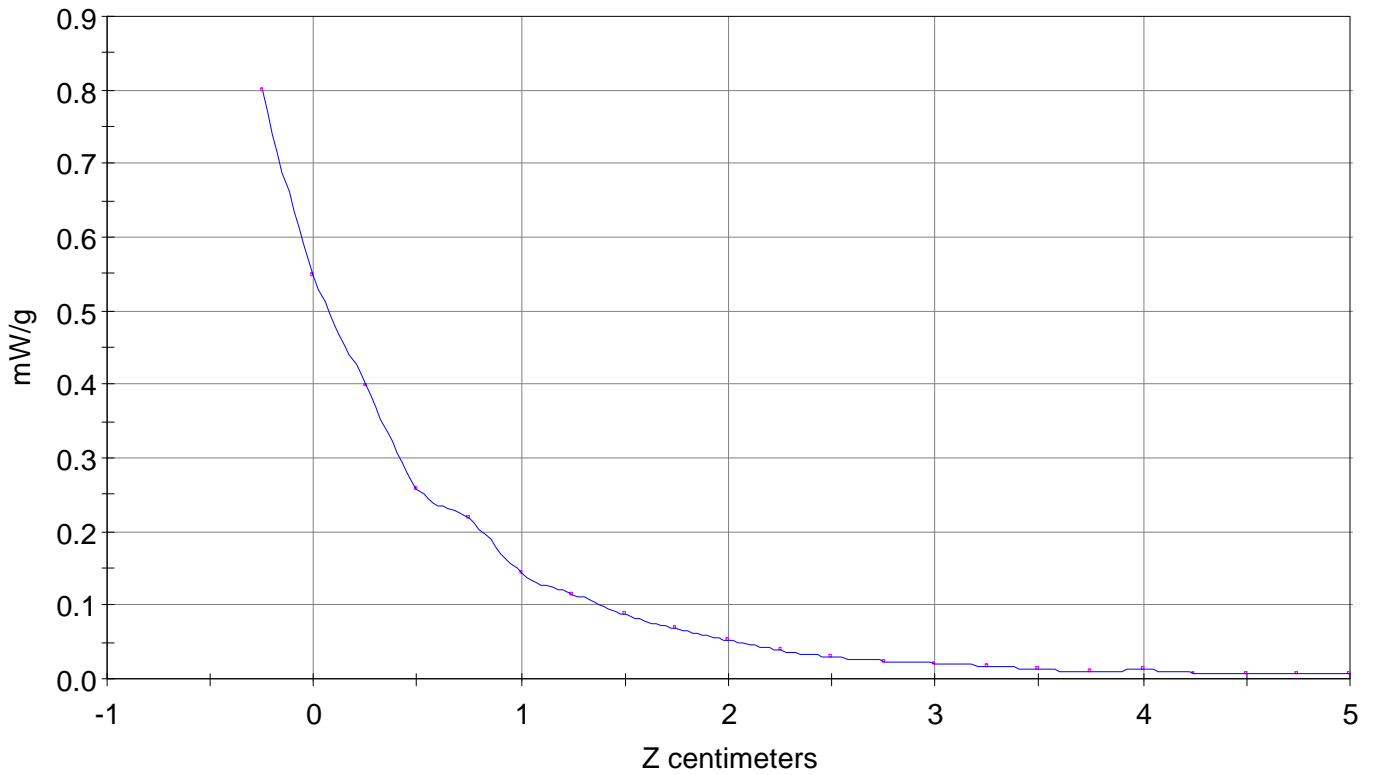
SAR Scan

File : 99012006_ZOOM

Start : 20-Jan-99 12:49:43 pm End : 20-Jan-99 12:58:10 pm

SONY/CMZS300/002;1851.25MHz;W;Helical/Out;

Head/Left Ear;ZOOM/SAR;PCTEST/E Field/0 DegreesBrain/42.900/1.650

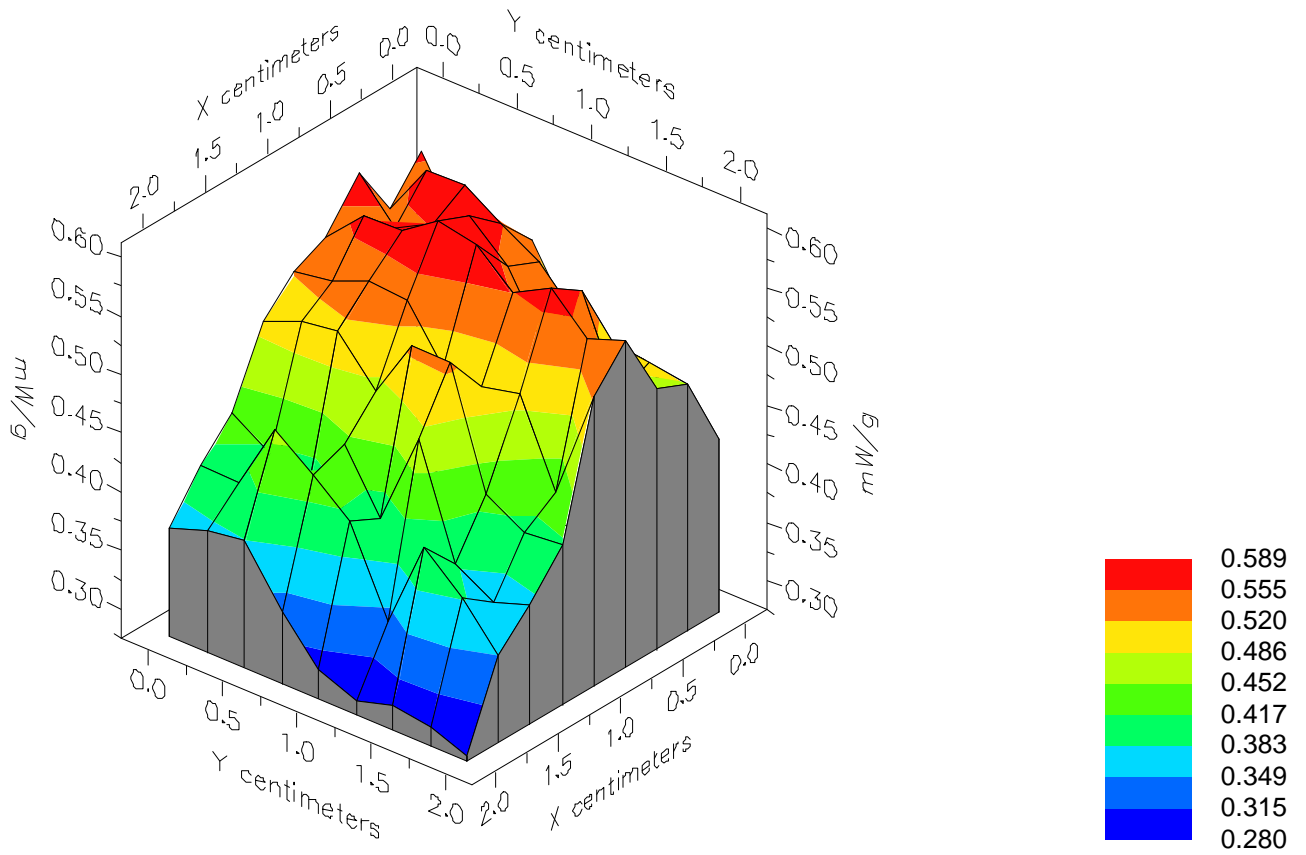


File : 99012006_ZOOM

Start : 20-Jan-99 12:49:43 pm End : 20-Jan-99 12:58:10 pm

SONY/CMZS300/002;1851.25MHz;W;Helical/Out;

Head/Left Ear;ZOOM/SAR;PCTEST/E Field/0 DegreesBrain/42.900/1.650

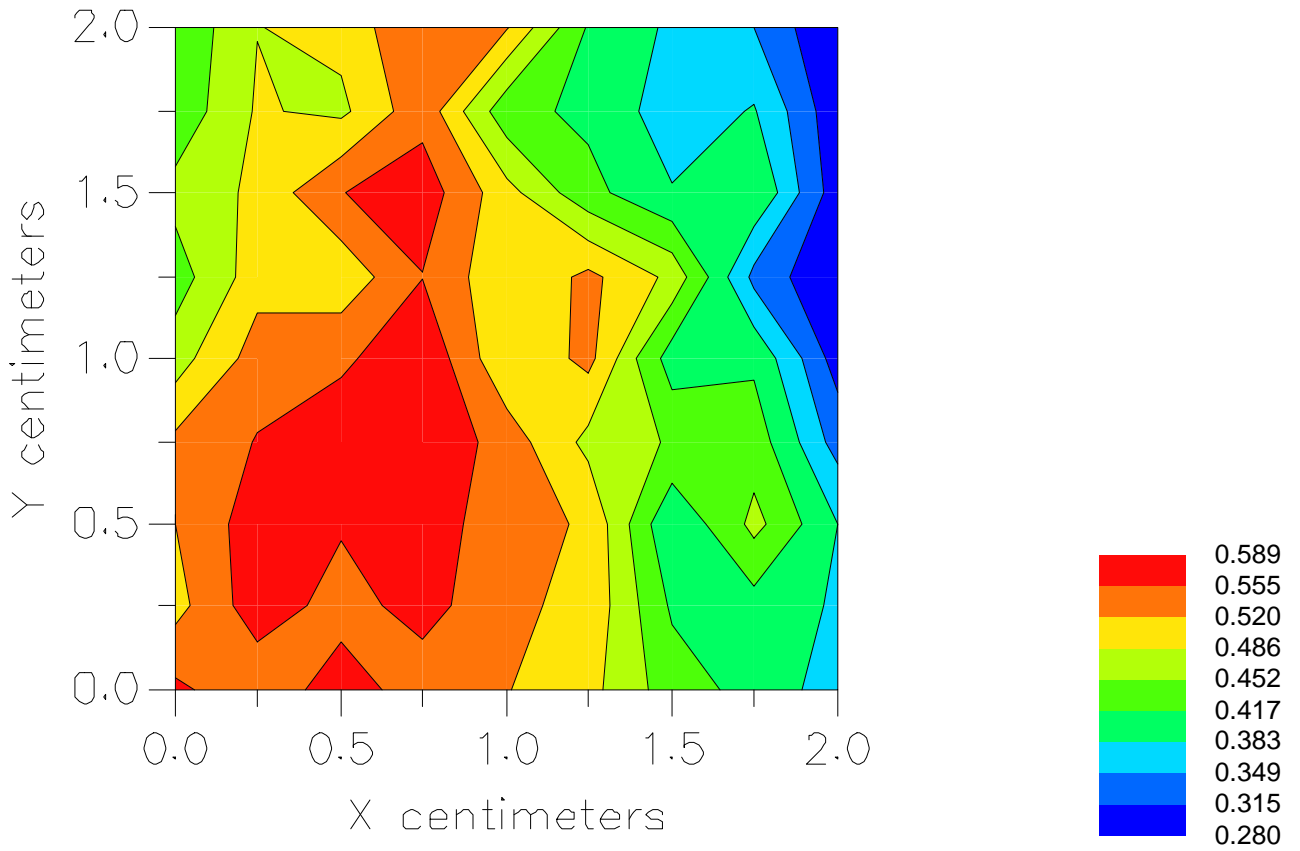


File : 99012006_ZOOM

Start : 20-Jan-99 12:49:43 pm End : 20-Jan-99 12:58:10 pm

SONY/CMZS300/002;1851.25MHz;W;Helical/Out;

Head/Left Ear;ZOOM/SAR;PCTEST/E Field/0 DegreesBrain/42.900/1.650



File : c:/idx3/SYSTEM/SARMEAS3/data/Normal/99012008_ZOOM.VLT
Start : 20-Jan-99 01:19:30 pm End : 20-Jan-99 01:34:00 pm

Radio Type : SONY
Model Number : CMZS300
Serial Number : 002
Frequency : 1880.00 MHz
Peak Trans. Pwr : 0.450 W
Start Trans. Pwr : 0.450 W
Antenna Type : Helical
Antenna Posn. : In
Phantom Type : Head
Phantom Posn. : Left Ear
Scan Type : ZOOM/SAR
Probe Name : PCTEST
Field Type : E Field
Orientation : 0 Degrees

Mixture Type = Brain
Mixture Dielectric Constant = 42.900
Mixture Conductivity = 1.650

Comment :
SONY PCS PHONE
CHANNEL 0600 PCS MODE
PCTEST

Robot : PCTEST

Probe Offset = 0.25 cm
Sensor Factor = 0.0108
Conversion Factor = 1.200

PCTEST Amplifier Channel Settings : 0.250 0.233 0.225

Max Location : X = 1.000, Y = 0.750, Z = 0.000 (cm) Value = 9.889

Measured Values (volts) =
8.863E-003 5.936E-003 4.141E-003 2.951E-003 2.246E-003 1.703E-003
1.293E-003 9.630E-004 7.572E-004 5.574E-004 4.114E-004 3.078E-004
2.329E-004 2.168E-004 1.516E-004 1.207E-004 1.118E-004 9.800E-005
7.374E-005 7.663E-005 3.425E-005

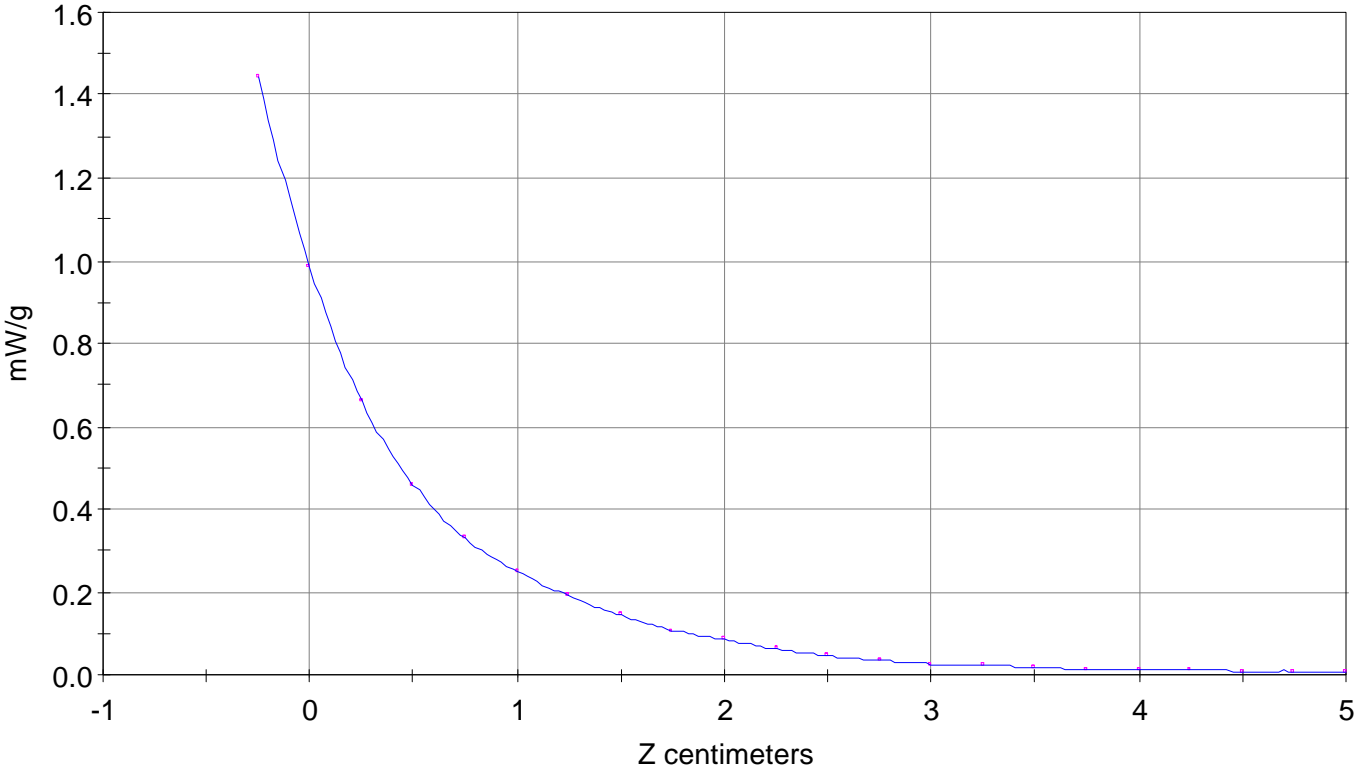
Calc. Voltage @ Surface (Vs) = 0.0130

Voltage @ 1.00 cm (Vt) = 0.0030

Ave. Voltage (Vs+Vt)/2 = 0.0080

Ave. SAR over 1 g (mW/g) = 0.8844

SAR Scan
File : 99012008_ZOOM
Start : 20-Jan-99 01:19:30 pm End : 20-Jan-99 01:34:00 pm
SONY/CMZS300/002;1880.00MHz;W;Helical/In;
Head/Left Ear;ZOOM/SAR;PCTEST/E Field/0 DegreesBrain/42.900/1.650

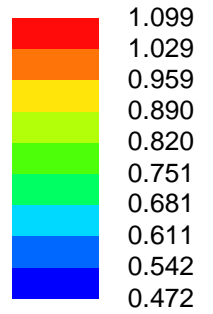
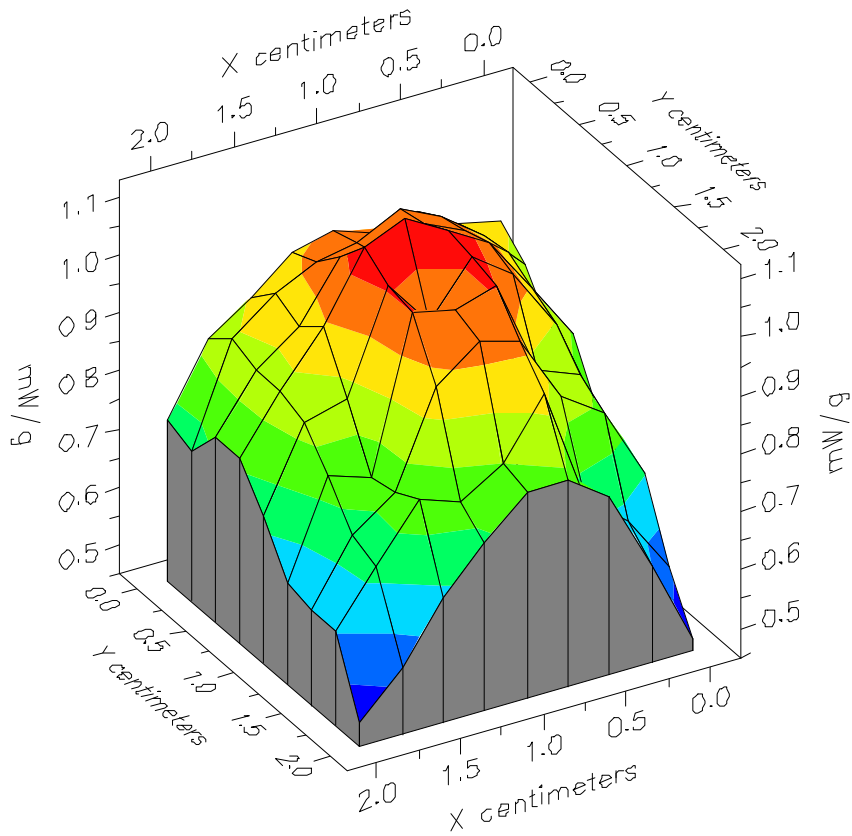


File : 99012008_ZOOM

Start : 20-Jan-99 01:19:30 pm End : 20-Jan-99 01:34:00 pm

SONY/CMZS300/002;1880.00MHz;W;Helical/In;

Head/Left Ear;ZOOM/SAR;PCTEST/E Field/0 DegreesBrain/42.900/1.650

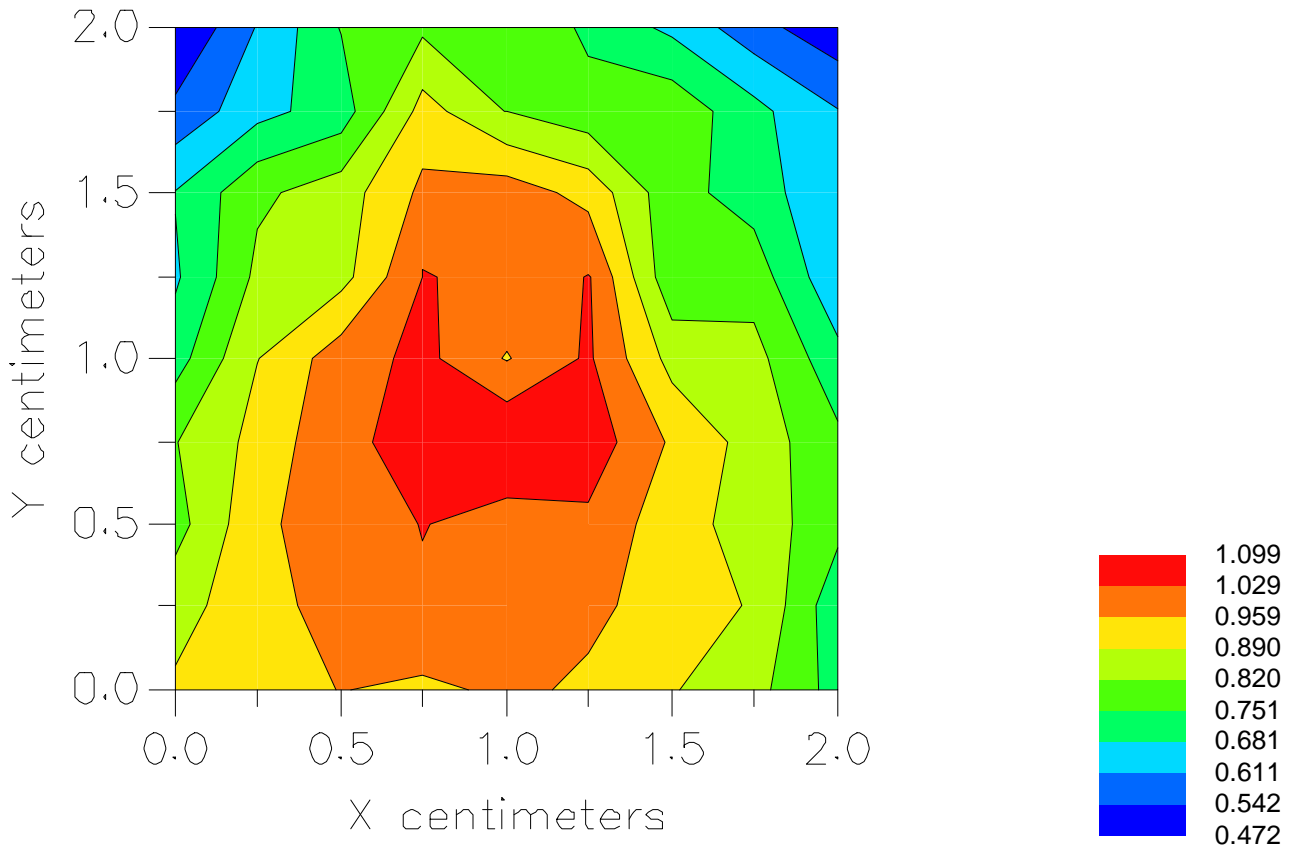


File : 99012008_ZOOM

Start : 20-Jan-99 01:19:30 pm End : 20-Jan-99 01:34:00 pm

SONY/CMZS300/002;1880.00MHz;W;Helical/In;

Head/Left Ear;ZOOM/SAR;PCTEST/E Field/0 DegreesBrain/42.900/1.650



File : c:/idx3/SYSTEM/SARMEAS3/data/Normal/99012010_ZOOM.VLT
Start : 20-Jan-99 01:48:29 pm End : 20-Jan-99 02:02:41 pm

Radio Type : SONY
Model Number : CMZS300
Serial Number : 002
Frequency : 1880.00 MHz
Peak Trans. Pwr : 0.450 W
Start Trans. Pwr: 0.450 W
Antenna Type : Helical
Antenna Posn. : Out
Phantom Type : Head
Phantom Posn. : Left Ear
Scan Type : ZOOM/SAR
Probe Name : PCTEST
Field Type : E Field
Orientation : 0 Degrees

Mixture Type = Brain
Mixture Dielectric Constant = 42.900
Mixture Conductivity = 1.650

Comment :
SONY PCS PHONE
CHANNEL 0600 PCS MODE
PCTEST

Robot : PCTEST

Probe Offset = 0.25 cm
Sensor Factor = 0.0108
Conversion Factor = 1.200

PCTEST Amplifier Channel Settings : 0.250 0.233 0.225

Max Location : X = 0.500, Y = 0.500, Z = 0.000 (cm) Value = 5.221

Measured Values (volts) =
4.620E-003 3.363E-003 2.375E-003 1.815E-003 1.359E-003 1.064E-003
8.113E-004 5.923E-004 4.692E-004 3.606E-004 2.674E-004 2.301E-004
1.740E-004 1.412E-004 1.282E-004 9.374E-005 9.902E-005 8.338E-005
7.414E-005 4.742E-005 5.763E-005

Calc. Voltage @ Surface (Vs) = 0.0064

Voltage @ 1.00 cm (Vt) = 0.0018

Ave. Voltage (Vs+Vt)/2 = 0.0041

Ave. SAR over 1 g (mW/g) = 0.4589

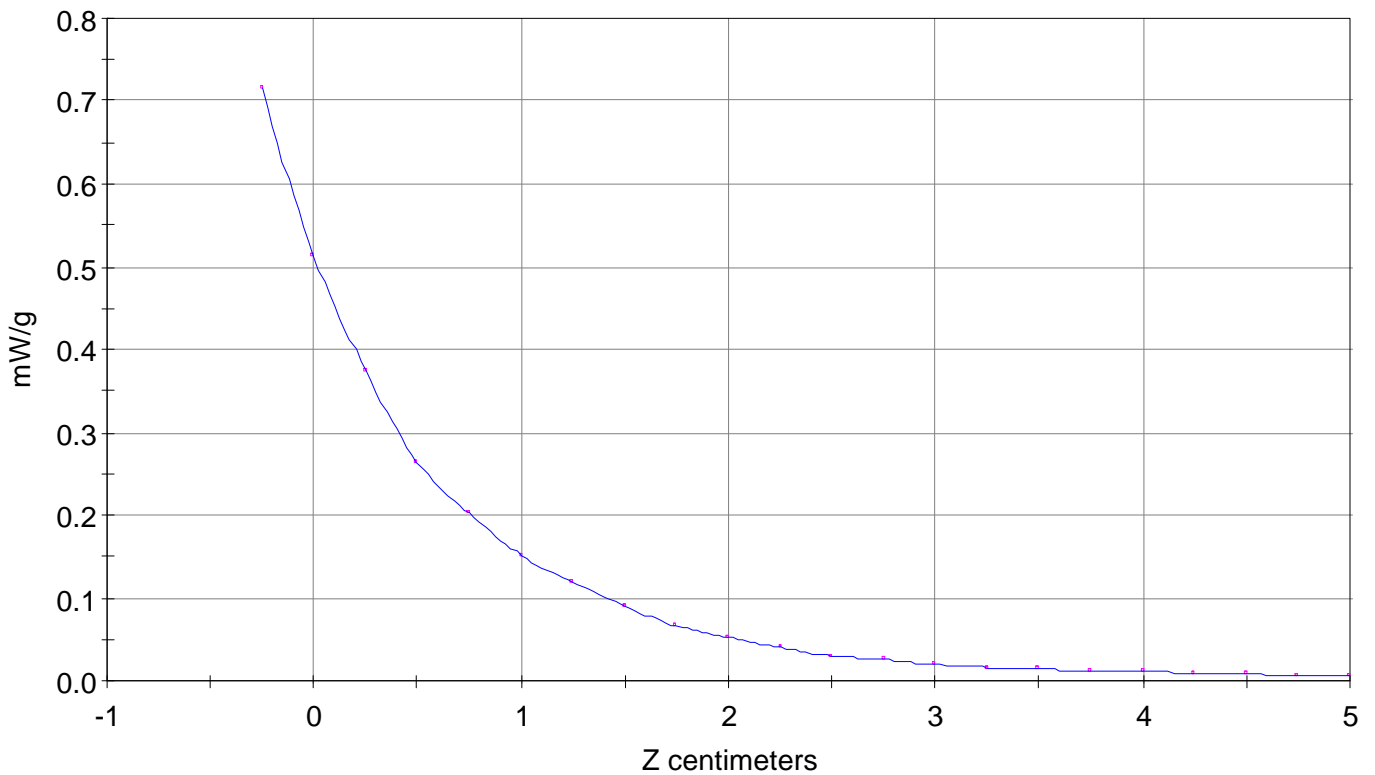
SAR Scan

File : 99012010_ZOOM

Start : 20-Jan-99 01:48:29 pm End : 20-Jan-99 02:02:41 pm

SONY/CMZS300/002;1880.00MHz;W;Helical/Out;

Head/Left Ear;ZOOM/SAR;PCTEST/E Field/0 DegreesBrain/42.900/1.650

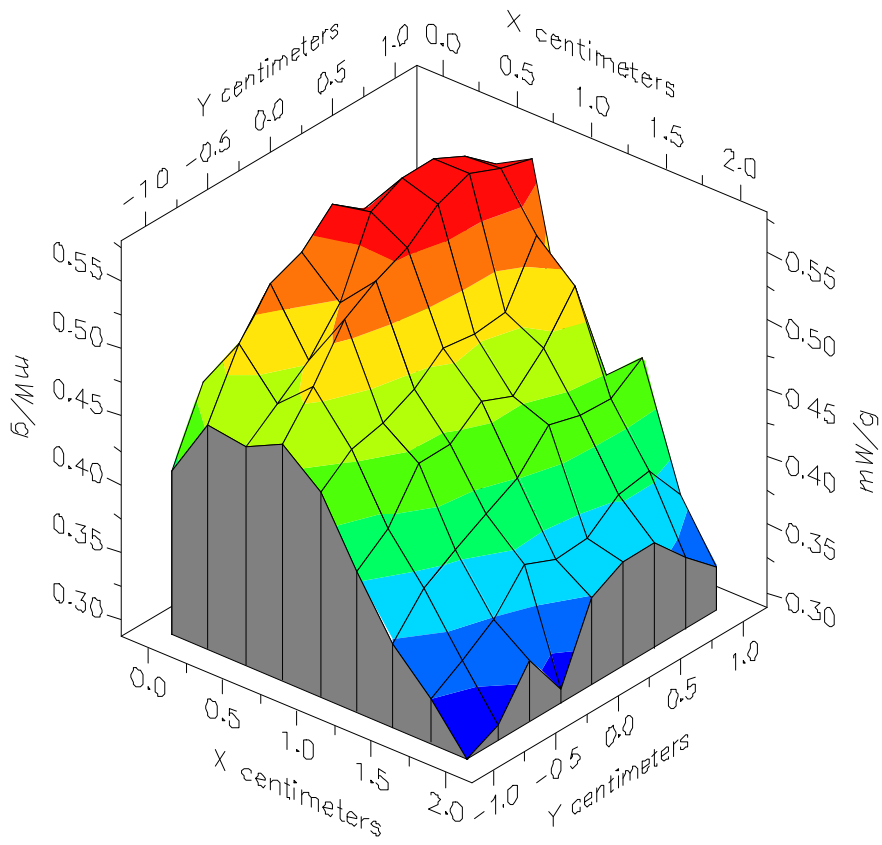


File : 99012010_ZOOM

Start : 20-Jan-99 01:48:29 pm End : 20-Jan-99 02:02:41 pm

SONY/CMZS300/002;1880.00MHz;W;Helical/Out;

Head/Left Ear;ZOOM/SAR;PCTEST/E Field/0 DegreesBrain/42.900/1.650

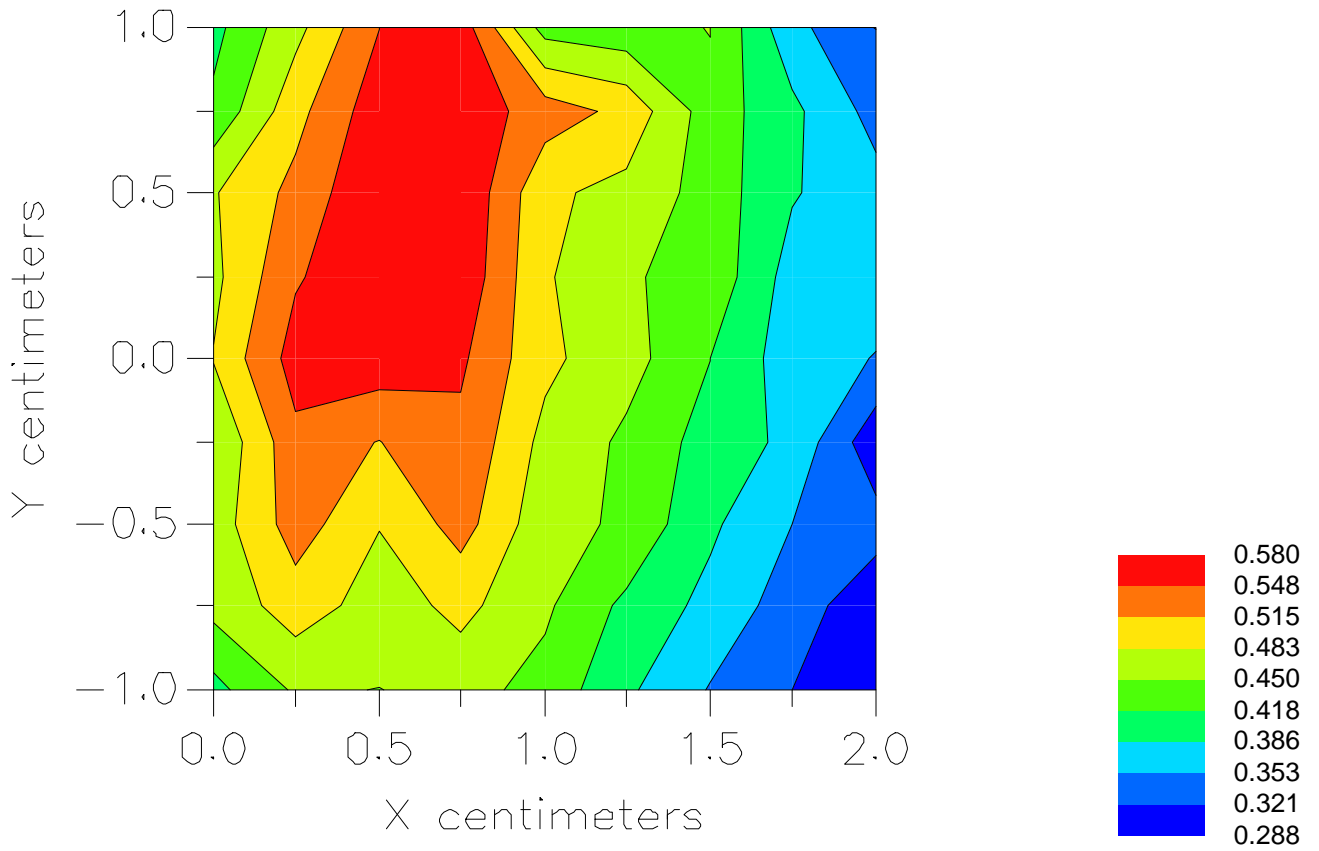


File : 99012010_ZOOM

Start : 20-Jan-99 01:48:29 pm End : 20-Jan-99 02:02:41 pm

SONY/CMZS300/002;1880.00MHz;W;Helical/Out;

Head/Left Ear;ZOOM/SAR;PCTEST/E Field/0 DegreesBrain/42.900/1.650



File : c:/idx3/SYSTEM/SARMEAS3/data/Normal/99012003_ZOOM.VLT
Start : 20-Jan-99 11:38:10 am End : 20-Jan-99 11:46:36 am

Radio Type : SONY
Model Number : CMZS300
Serial Number : 002
Frequency : 1908.75 MHz
Peak Trans. Pwr : 0.450 W
Start Trans. Pwr : 0.450 W
Antenna Type : Helical
Antenna Posn. : In
Phantom Type : Head
Phantom Posn. : Left Ear
Scan Type : ZOOM/SAR
Probe Name : PCTEST
Field Type : E Field
Orientation : 0 Degrees

Mixture Type = Brain
Mixture Dielectric Constant = 42.900
Mixture Conductivity = 1.650

Comment :
SONY PCS PHONE
CHANNEL 1175 PCS MODE
PCTEST

Robot : PCTEST

Probe Offset = 0.25 cm
Sensor Factor = 0.0108
Conversion Factor = 1.200

PCTEST Amplifier Channel Settings : 0.250 0.233 0.225

Max Location : X = 1.000, Y = 0.750, Z = 0.000 (cm) Value = 8.198

Measured Values (volts) =
7.521E-003 4.816E-003 3.397E-003 2.444E-003 1.919E-003 1.421E-003
1.039E-003 8.068E-004 6.055E-004 4.391E-004 3.133E-004 2.595E-004
2.312E-004 1.365E-004 1.467E-004 1.191E-004 9.409E-005 1.990E-004
1.265E-004 4.783E-005 7.266E-005

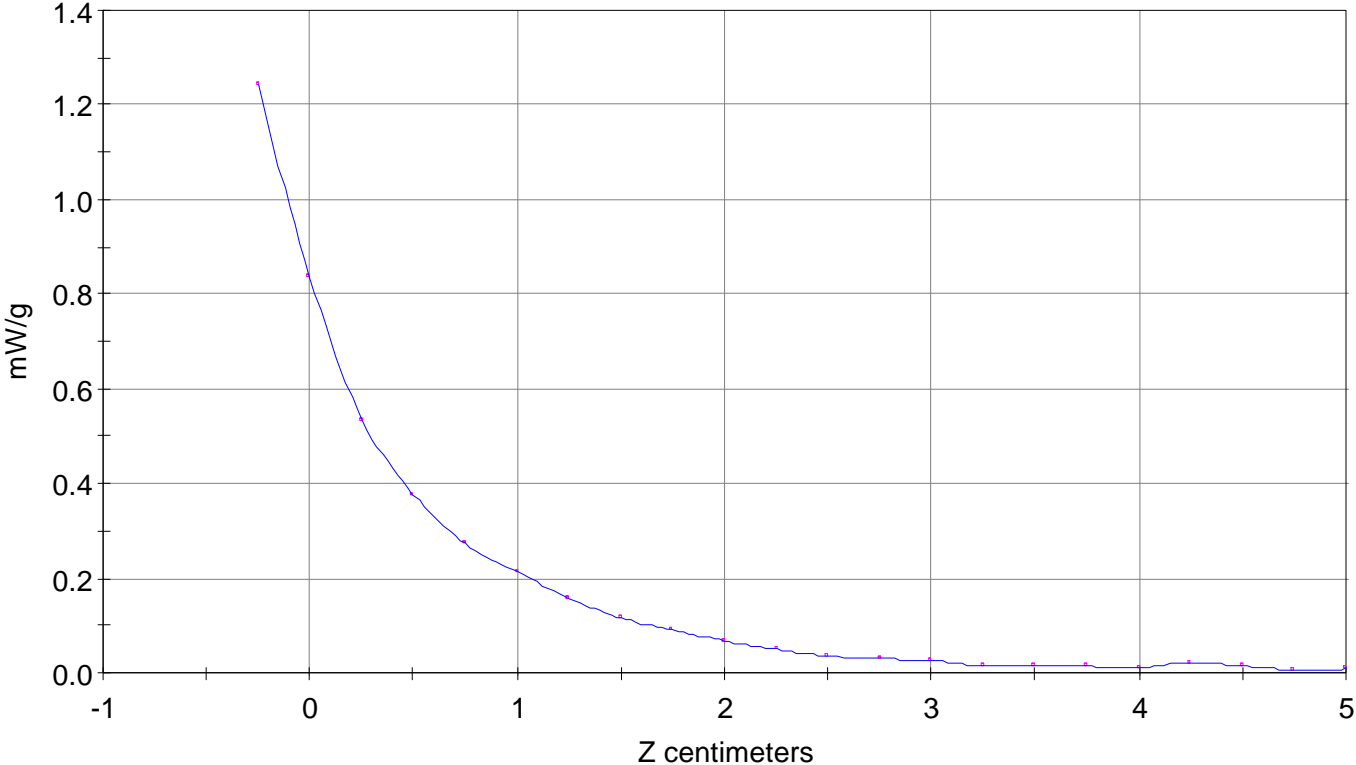
Calc. Voltage @ Surface (Vs) = 0.0112

Voltage @ 1.00 cm (Vt) = 0.0024

Ave. Voltage (Vs+Vt)/2 = 0.0068

Ave. SAR over 1 g (mW/g) = 0.7582

SAR Scan
File : 99012003_ZOOM
Start : 20-Jan-99 11:38:10 am End : 20-Jan-99 11:46:36 am
SONY/CMZS300/002;1908.75MHz;W;Helical/In;
Head/Left Ear;ZOOM/SAR;PCTEST/E Field/0 DegreesBrain/42.900/1.650

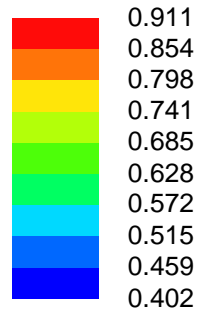
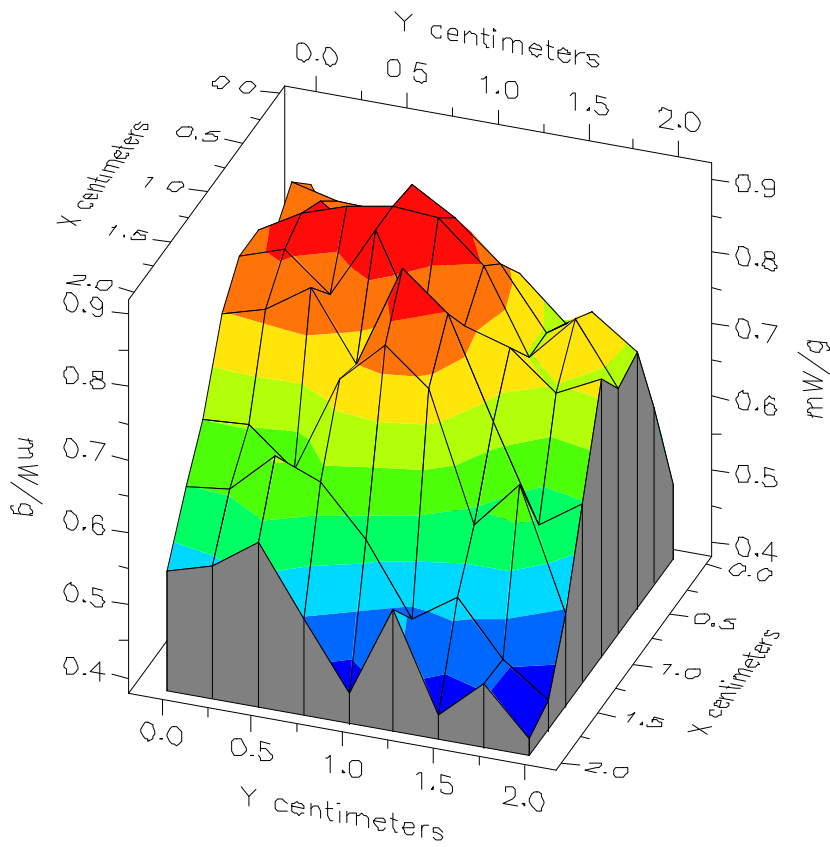


File : 99012003_ZOOM

Start : 20-Jan-99 11:38:10 am End : 20-Jan-99 11:46:36 am

SONY/CMZS300/002;1908.75MHz;W;Helical/In;

Head/Left Ear;ZOOM/SAR;PCTEST/E Field/0 DegreesBrain/42.900/1.650

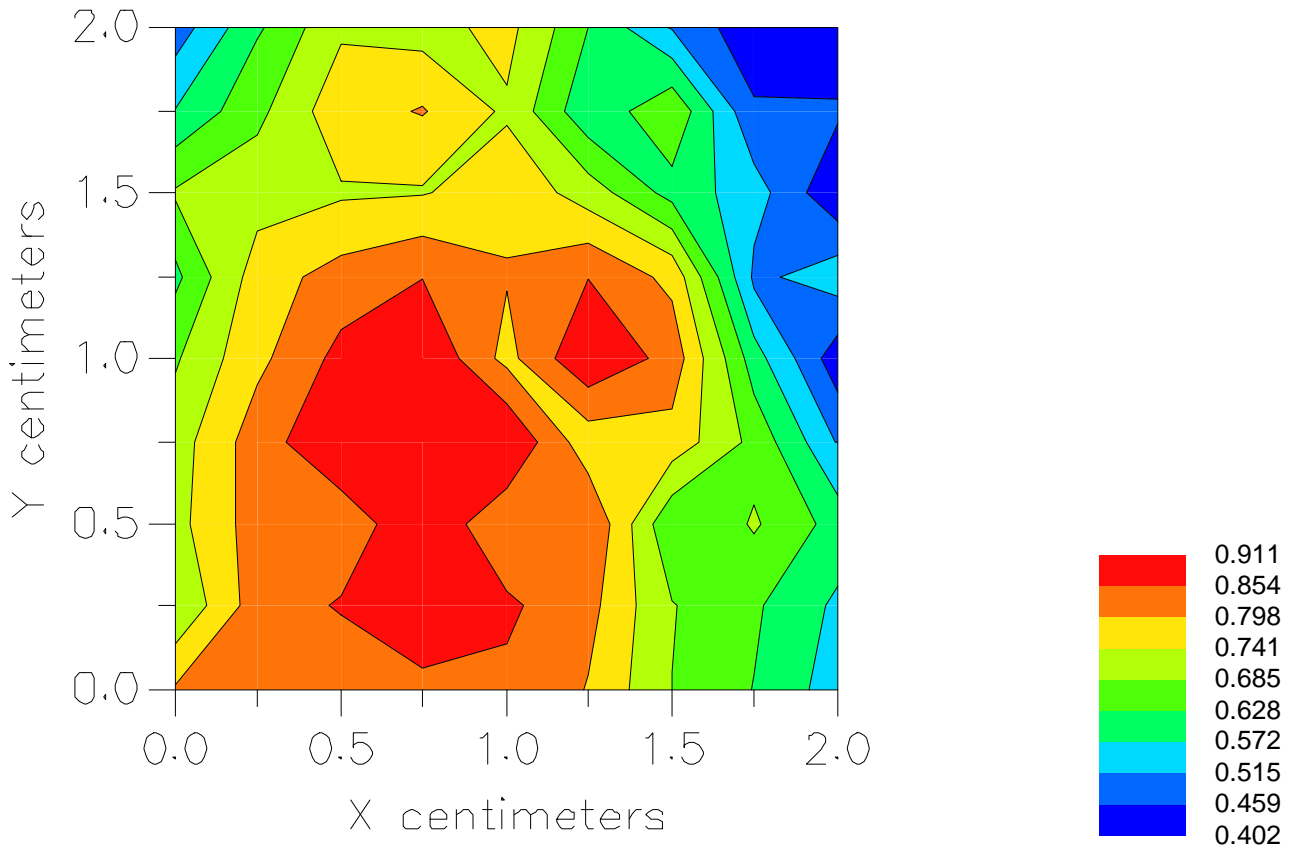


File : 99012003_ZOOM

Start : 20-Jan-99 11:38:10 am End : 20-Jan-99 11:46:36 am

SONY/CMZS300/002;1908.75MHz;W;Helical/In;

Head/Left Ear;ZOOM/SAR;PCTEST/E Field/0 DegreesBrain/42.900/1.650



File : c:/idx3/SYSTEM/SARMEAS3/data/Normal/99012004_ZOOM.VLT
Start : 20-Jan-99 11:54:55 am End : 20-Jan-99 12:03:20 pm

Radio Type : SONY
Model Number : CMZS300
Serial Number : 002
Frequency : 1908.75 MHz
Peak Trans. Pwr : 0.450 W
Start Trans. Pwr : 0.450 W
Antenna Type : Helical
Antenna Posn. : Out
Phantom Type : Head
Phantom Posn. : Left Ear
Scan Type : ZOOM/SAR
Probe Name : PCTEST
Field Type : E Field
Orientation : 0 Degrees

Mixture Type = Brain
Mixture Dielectric Constant = 42.900
Mixture Conductivity = 1.650

Comment :
SONY PCS PHONE
CHANNEL 1175 PCS MODE
PCTEST

Robot : PCTEST

Probe Offset = 0.25 cm
Sensor Factor = 0.0108
Conversion Factor = 1.200

PCTEST Amplifier Channel Settings : 0.250 0.233 0.225

Max Location : X = 0.750, Y = 0.500, Z = 0.000 (cm) Value = 5.163

Measured Values (volts) =
5.211E-003 3.684E-003 2.563E-003 1.862E-003 1.372E-003 1.065E-003
8.007E-004 6.164E-004 4.355E-004 3.558E-004 2.907E-004 2.243E-004
1.590E-004 1.295E-004 1.200E-004 9.402E-005 9.452E-005 5.573E-005
8.859E-005 5.970E-005 6.976E-005

Calc. Voltage @ Surface (Vs) = 0.0074

Voltage @ 1.00 cm (Vt) = 0.0019

Ave. Voltage (Vs+Vt)/2 = 0.0046

Ave. SAR over 1 g (mW/g) = 0.5163

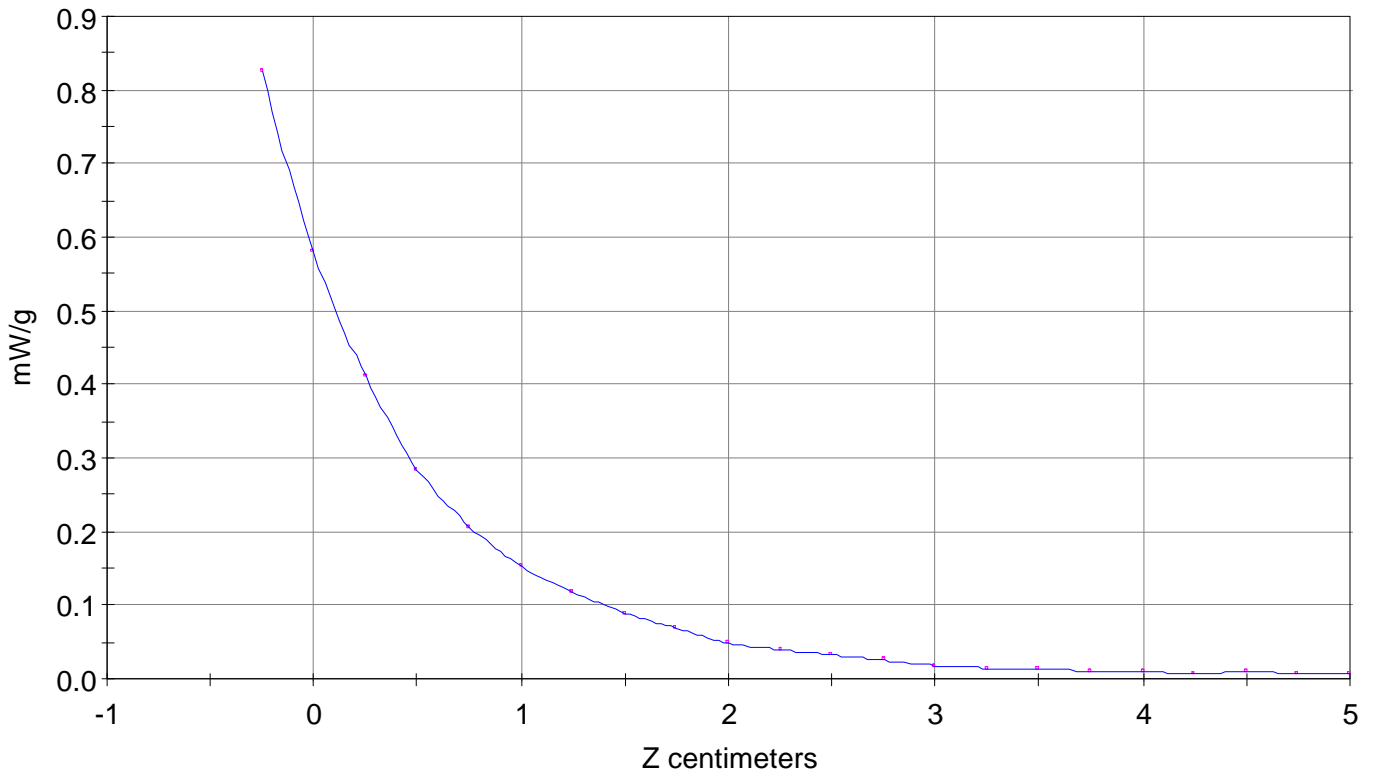
SAR Scan

File : 99012004_ZOOM

Start : 20-Jan-99 11:54:55 am End : 20-Jan-99 12:03:20 pm

SONY/CMZS300/002;1908.75MHz;W;Helical/Out;

Head/Left Ear;ZOOM/SAR;PCTEST/E Field/0 DegreesBrain/42.900/1.650

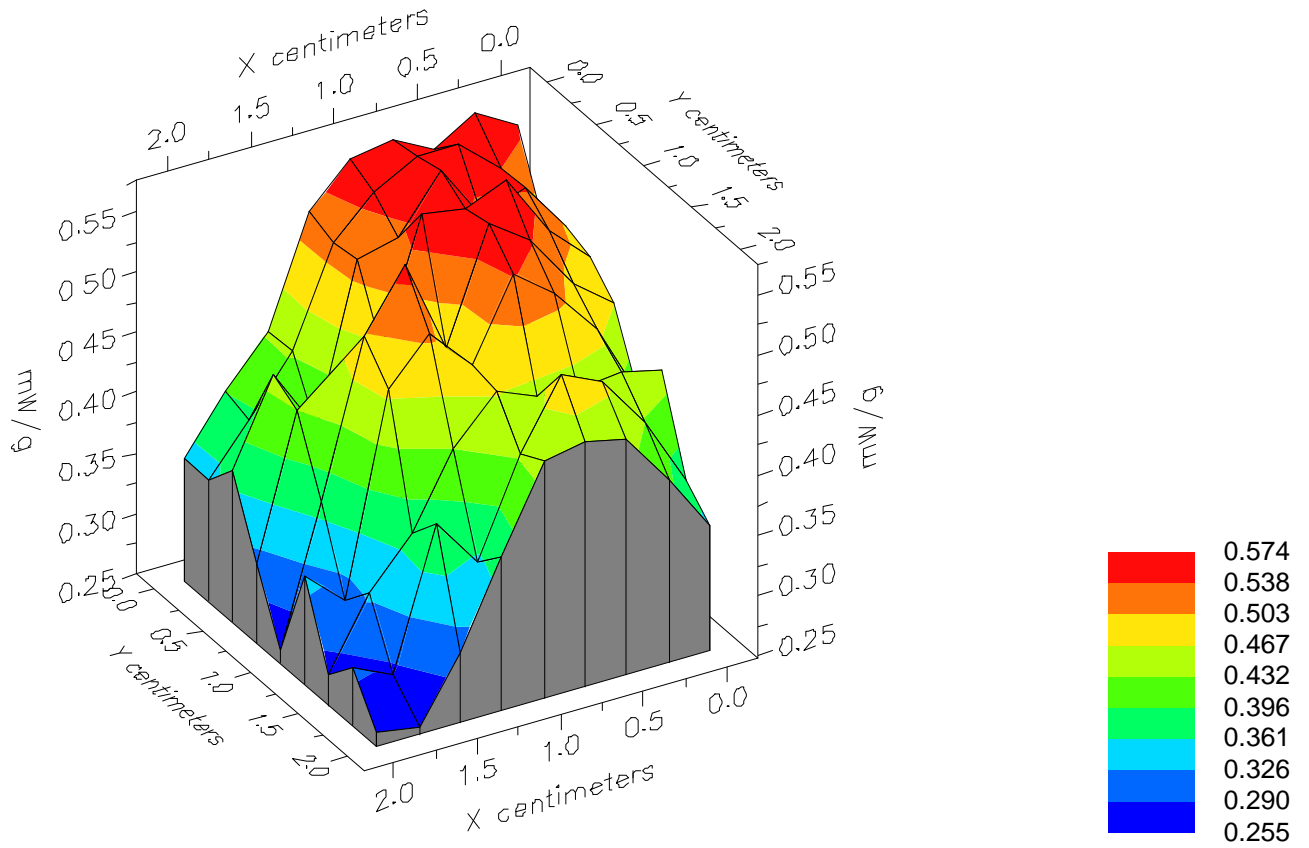


File : 99012004_ZOOM

Start : 20-Jan-99 11:54:55 am End : 20-Jan-99 12:03:20 pm

SONY/CMZS300/002;1908.75MHz;W;Helical/Out;

Head/Left Ear;ZOOM/SAR;PCTEST/E Field/0 DegreesBrain/42.900/1.650



File : 99012004_ZOOM

Start : 20-Jan-99 11:54:55 am End : 20-Jan-99 12:03:20 pm

SONY/CMZS300/002;1908.75MHz;W;Helical/Out;

Head/Left Ear;ZOOM/SAR;PCTEST/E Field/0 DegreesBrain/42.900/1.650

