

File : c:/idx3/SYSTEM/SARMEAS3/data/Normal/98090304_ZOOM.VLT

Start : 3-Sep-98 08:59:56 am End : 3-Sep-98 09:10:09 am

Radio Type : SONY
Model Number : L5ACMZ200DM
Serial Number : 000123
Frequency : 835.89 MHz
Peak Trans. Pwr : 0.360 W
Start Trans. Pwr: 0.360 W
Antenna Type : Helical
Antenna Posn. : In
Phantom Type : Head
Phantom Posn. : Left Ear
Scan Type : ZOOM/SAR
Probe Name : PCTEST
Field Type : E Field
Orientation : 0 Degrees

Mixture Type = Brain
Mixture Dielectric Constant = 43.400
Mixture Conductivity = 0.900

Comment :

CHAN 363 CDMA MODE
DUAL MODE PHONE
PCTEST ENGINEERING LABORATORY

Robot : PCTEST

Probe Offset = 0.25 cm
Sensor Factor = 0.0108
Conversion Factor = 0.790

PCTEST Amplifier Channel Settings : 0.168 0.136 0.132

Diode Coefficients:

Channel 1	An=-10.851	Bn=86.223	Cn=38.593	Dn=-0.016	Mn=0.026	Yn=0.000
Channel 2	An=-21.618	Bn=92.335	Cn=34.909	Dn=-0.019	Mn=0.029	Yn=0.000
Channel 3	An=-11.171	Bn=50.619	Cn=19.002	Dn=-0.025	Mn=0.052	Yn=0.001

Max Location : X = 4.250, Y = -0.500, Z = 0.000 (cm) Value = 10.739

Measured Values (volts) =

1.090E-002	8.136E-003	3.876E-003	2.130E-003	7.710E-004	2.979E-004
-6.122E-004	-6.985E-004	-8.900E-004	-8.378E-004	-8.417E-004	-1.252E-003
-1.267E-003					

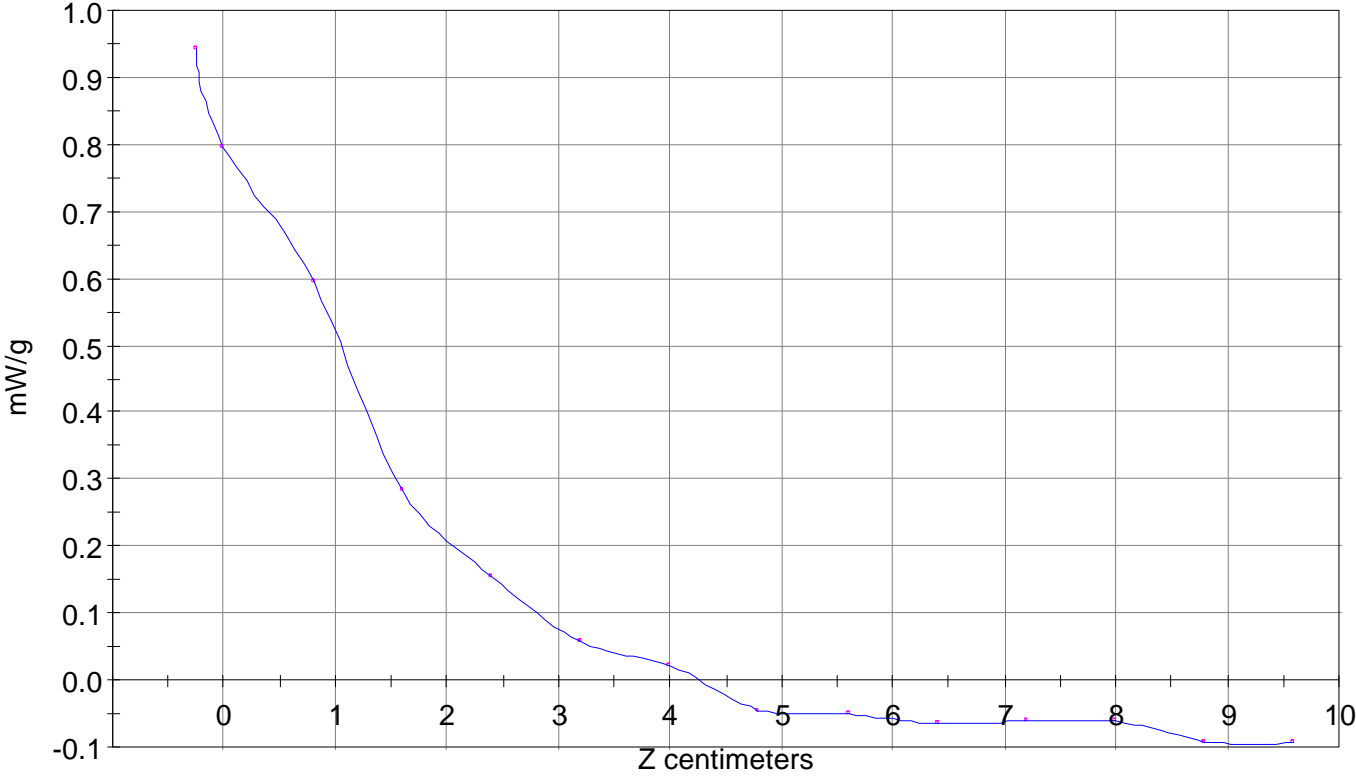
Calc. Voltage @ Surface (Vs) = 0.0129

Voltage @ 1.00 cm (Vt) = 0.0083

Ave. Voltage (Vs+Vt)/2 = 0.0106

Ave. SAR over 1 g (mW/g) = 0.7761

SAR Scan
File : 98090304_ZOOM
Start : 3-Sep-98 08:59:56 am End : 3-Sep-98 09:10:09 am
SONY/L5ACMZ200DM/000123;835.89MHz;W;Helical/In;
Head/Left Ear;ZOOM/SAR;PCTEST/E Field/0 DegreesBrain/43.400/0.900

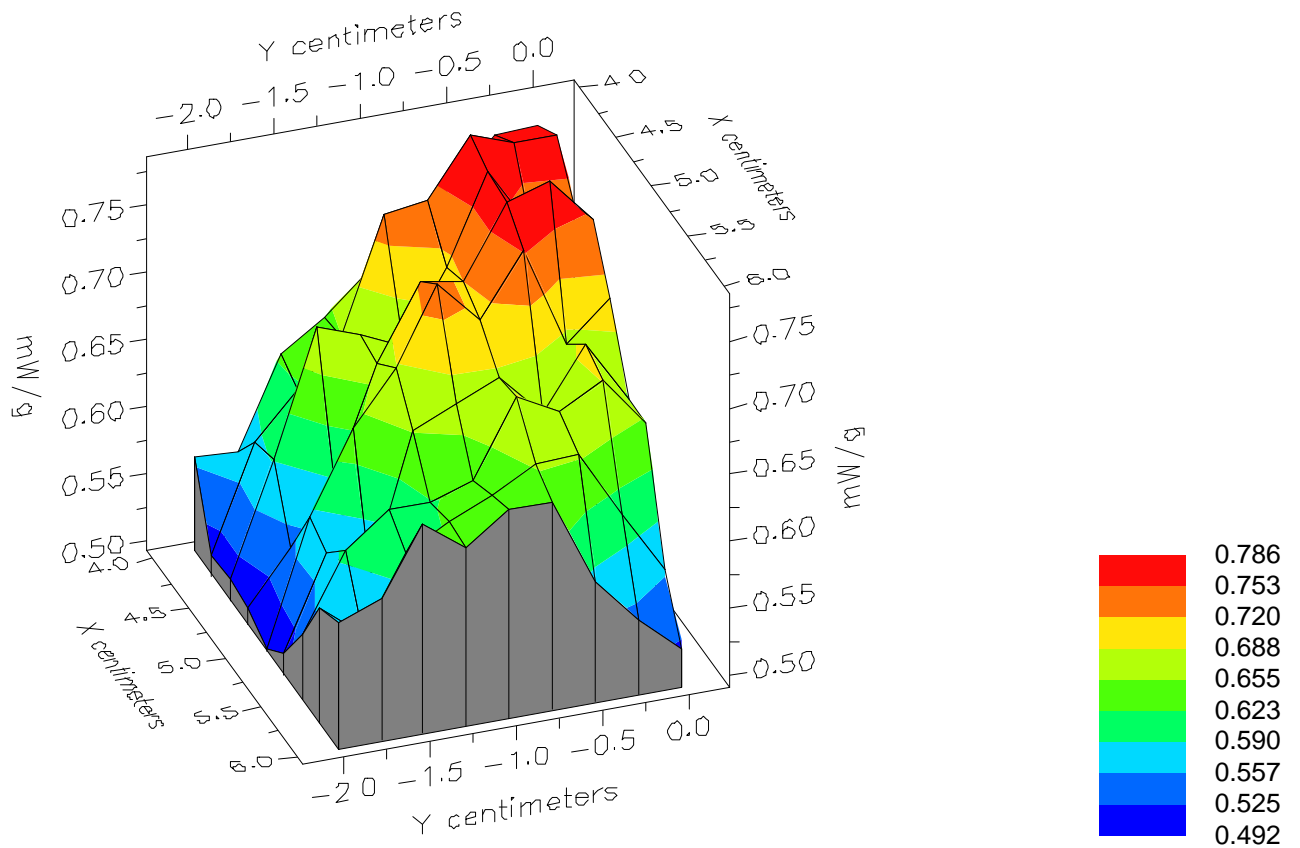


File : 98090304_ZOOM

Start : 3-Sep-98 08:59:56 am End : 3-Sep-98 09:10:09 am

SONY/L5ACMZ200DM/000123;835.89MHz;W;Helical/In;

Head/Left Ear;ZOOM/SAR;PCTEST/E Field/0 DegreesBrain/43.400/0.900

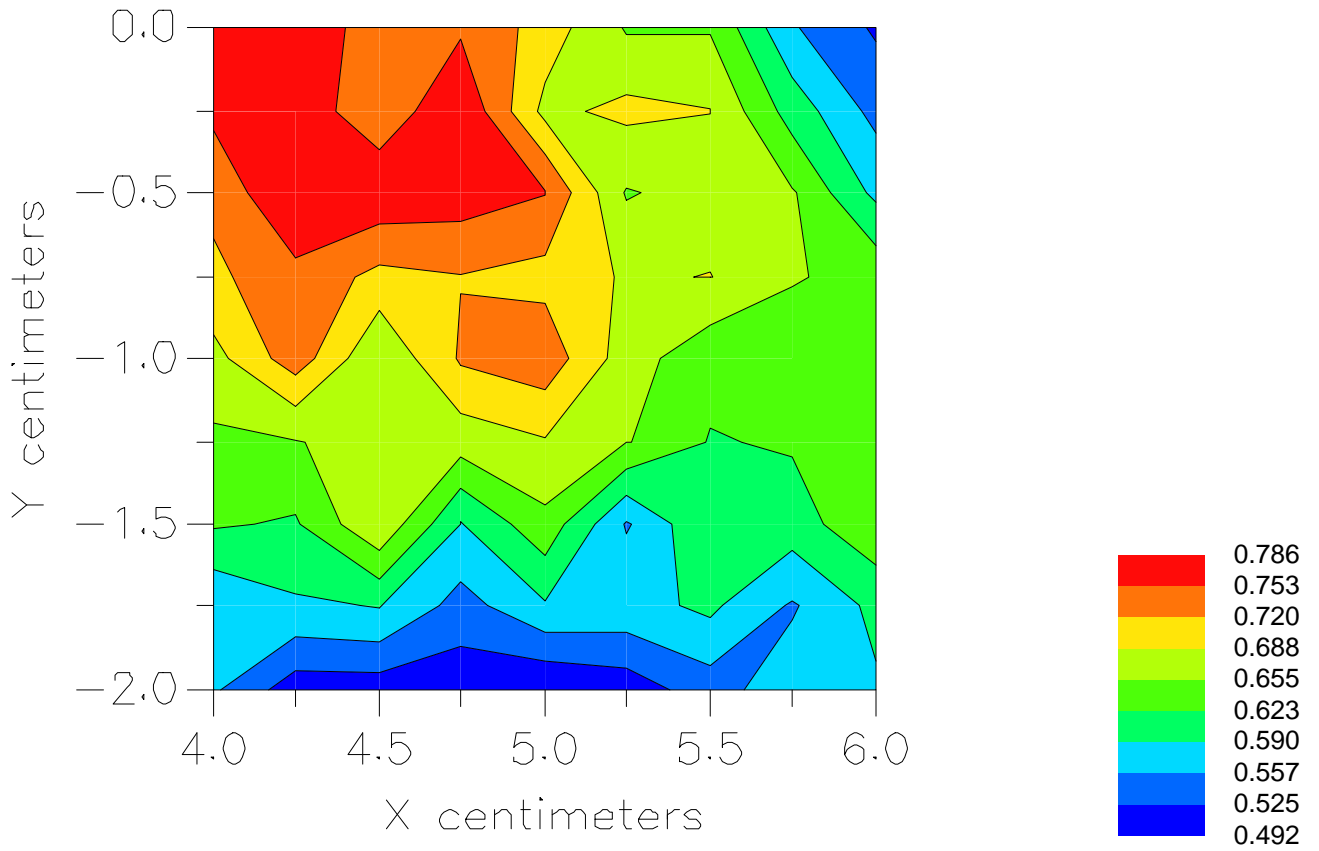


File : 98090304_ZOOM

Start : 3-Sep-98 08:59:56 am End : 3-Sep-98 09:10:09 am

SONY/L5ACMZ200DM/000123;835.89MHz;W;Helical/In;

Head/Left Ear;ZOOM/SAR;PCTEST/E Field/0 DegreesBrain/43.400/0.900



File : c:/idx3/SYSTEM/SARMEAS3/data/Normal/98090335_ZOOM.VLT

Start : 3-Sep-98 02:35:38 pm End : 3-Sep-98 02:46:44 pm

Radio Type : SONY
Model Number : L5ACMZ200DM
Serial Number : 000123
Frequency : 835.89 MHz
Peak Trans. Pwr : 0.360 W
Start Trans. Pwr : 0.360 W
Antenna Type : Helical
Antenna Posn. : Out
Phantom Type : Head
Phantom Posn. : Left Ear
Scan Type : ZOOM/SAR
Probe Name : PCTEST
Field Type : E Field
Orientation : 0 Degrees

Mixture Type = Brain
Mixture Dielectric Constant = 43.400
Mixture Conductivity = 0.900

Comment :
CHAN 363 CDMA MODE
DUAL MODE PHONE
PCTEST ENGINEERING LABORATORY

Robot : PCTEST

Probe Offset = 0.25 cm
Sensor Factor = 0.0108
Conversion Factor = 0.790

PCTEST Amplifier Channel Settings : 0.168 0.136 0.132

Diode Coefficients:

Channel 1	An=-10.851	Bn=86.223	Cn=38.593	Dn=-0.016	Mn=0.026	Yn=0.000
Channel 2	An=-21.618	Bn=92.335	Cn=34.909	Dn=-0.019	Mn=0.029	Yn=0.000
Channel 3	An=-11.171	Bn=50.619	Cn=19.002	Dn=-0.025	Mn=0.052	Yn=0.001

Max Location : X = 4.250, Y = 0.000, Z = 0.000 (cm) Value = 7.819

Measured Values (volts) =

7.037E-003	5.545E-003	3.045E-003	1.308E-003	-3.113E-004	-1.010E-003
-1.093E-003	-1.249E-003	-1.220E-003	-5.872E-004	-1.259E-003	

Calc. Voltage @ Surface (Vs) = 0.0078

Voltage @ 1.00 cm (Vt) = 0.0059

Ave. Voltage (Vs+Vt)/2 = 0.0069

Ave. SAR over 1 g (mW/g) = 0.5034

SAR Scan

File : 98090335_ZOOM

Start : 3-Sep-98 02:35:38 pm End : 3-Sep-98 02:46:44 pm

SONY/L5ACMZ200DM/000123;835.89MHz;W;Helical/Out;

Head/Left Ear;ZOOM/SAR;PCTEST/E Field/0 DegreesBrain/43.400/0.900

