

File : c:/idx3/SYSTEM/SARMEAS3/data/Normal/98120311_ZOOM.VLT
Start : 3-Dec-98 10:48:30 am End : 3-Dec-98 10:59:36 am

Radio Type : SONY
Model Number : L5ACMZ100SB2
Serial Number : 741
Frequency : 1851.25 MHz
Peak Trans. Pwr : 0.400 W
Start Trans. Pwr : 0.400 W
Antenna Type : Helical
Antenna Posn. : In
Phantom Type : Head
Phantom Posn. : Left Ear
Scan Type : ZOOM/SAR
Probe Name : PCTEST
Field Type : E Field
Orientation : 0 Degrees

Mixture Type = Brain
Mixture Dielectric Constant = 42.900
Mixture Conductivity = 1.650

Comment :
CHAN 0025 PCS PHONE
PCTEST CDMA MODE
PCTEST

Robot : PCTEST

Probe Offset = 0.25 cm
Sensor Factor = 0.0108
Conversion Factor = 1.200

PCTEST Amplifier Channel Settings : 0.250 0.233 0.225

Max Location : X = 0.250, Y = 2.000, Z = 0.000 (cm) Value = 12.284

Measured Values (volts) =
1.011E-002 8.372E-003 6.401E-003 4.797E-003 3.936E-003 3.435E-003
2.090E-003 1.849E-003 1.961E-003 9.224E-004 9.111E-004 1.183E-003
8.958E-004 9.914E-004 1.127E-003 3.613E-004 1.093E-003 4.217E-004
9.824E-004 5.793E-004 2.228E-004

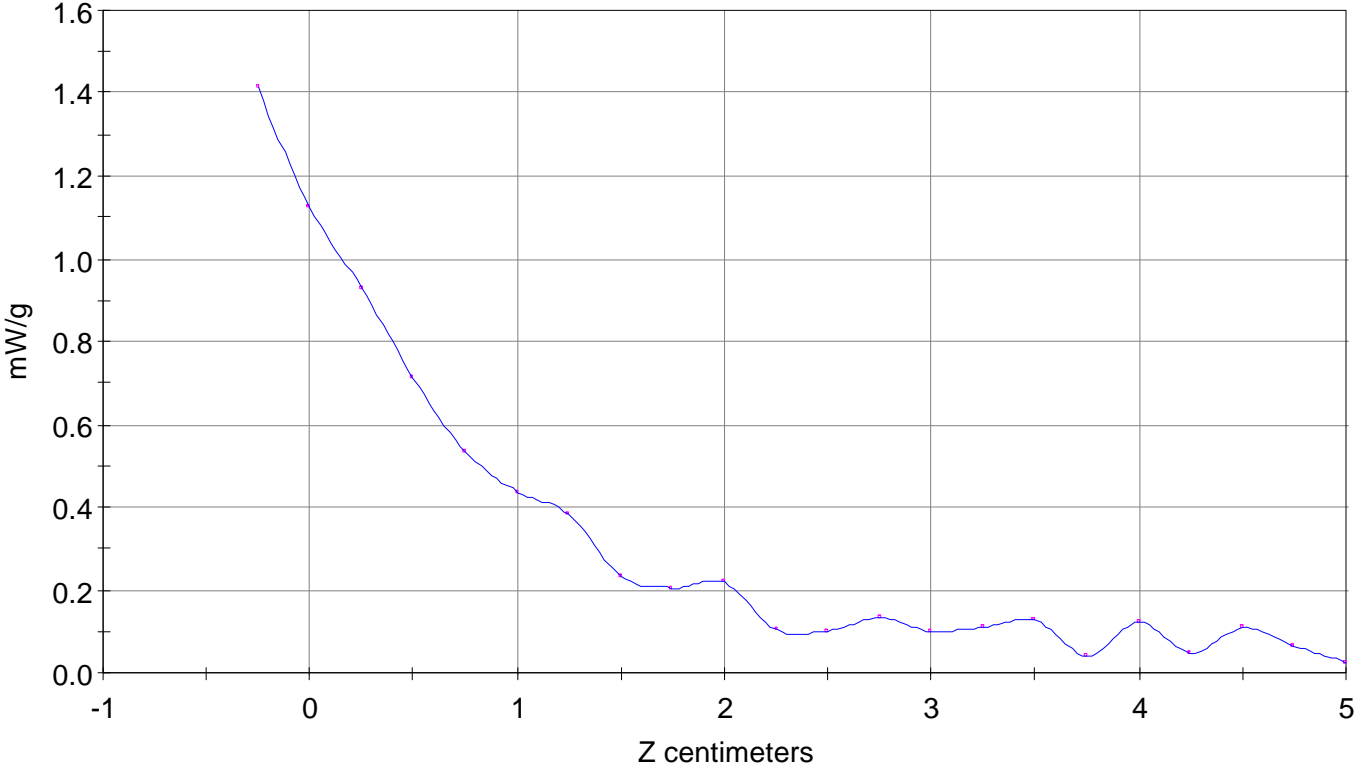
Calc. Voltage @ Surface (Vs) = 0.0127

Voltage @ 1.00 cm (Vt) = 0.0048

Ave. Voltage (Vs+Vt)/2 = 0.0088

Ave. SAR over 1 g (mW/g) = 0.9730

SAR Scan
File : 98120311_ZOOM
Start : 3-Dec-98 10:48:30 am End : 3-Dec-98 10:59:36 am
SONY/L5ACMZ100SB2/741;1851.25MHz;W;Helical/In;
Head/Left Ear;ZOOM/SAR;PCTEST/E Field/0 DegreesBrain/42.900/1.650

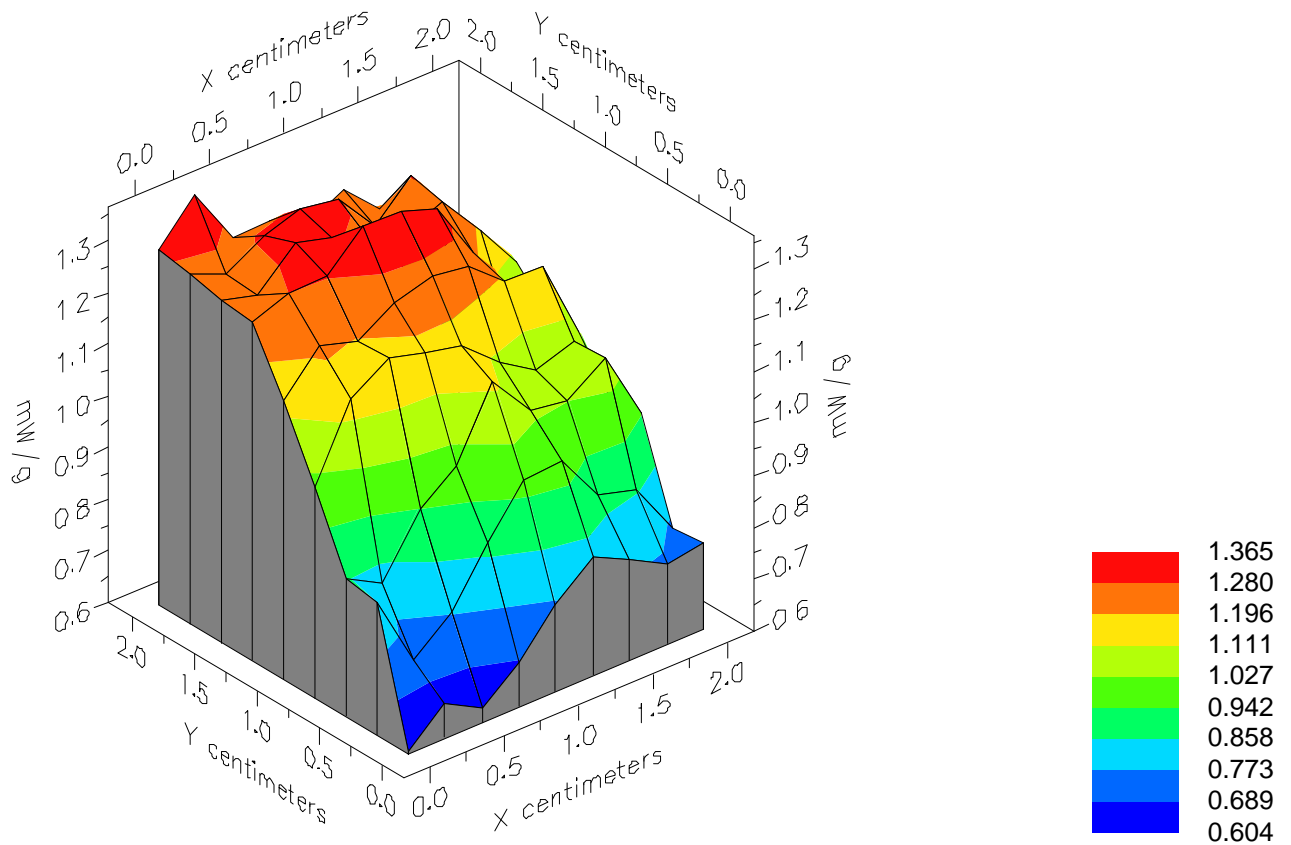


File : 98120311_ZOOM

Start : 3-Dec-98 10:48:30 am End : 3-Dec-98 10:59:36 am

SONY/L5ACMZ100SB2/741;1851.25MHz;W;Helical/In;

Head/Left Ear;ZOOM/SAR;PCTEST/E Field/0 DegreesBrain/42.900/1.650

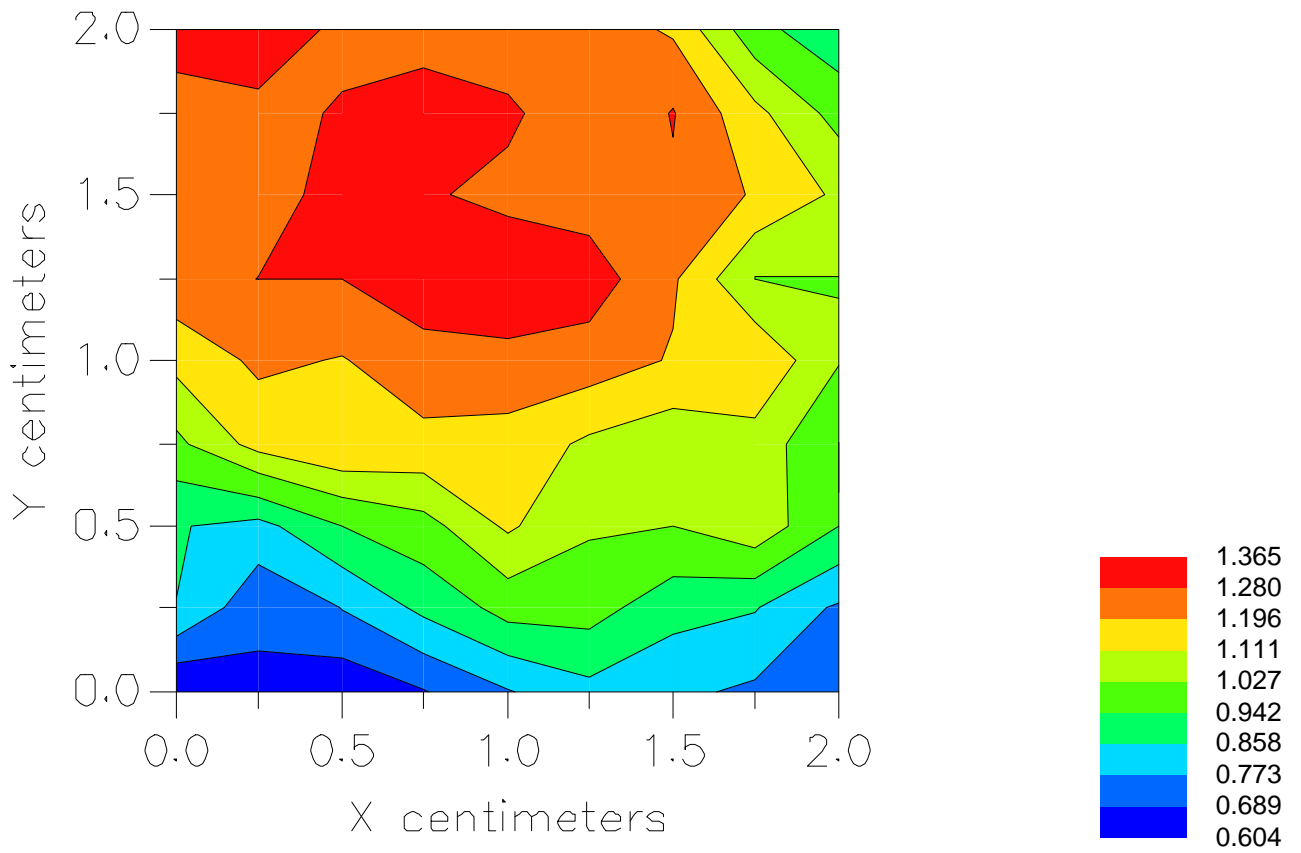


File : 98120311_ZOOM

Start : 3-Dec-98 10:48:30 am End : 3-Dec-98 10:59:36 am

SONY/L5ACMZ100SB2/741;1851.25MHz;W;Helical/In;

Head/Left Ear;ZOOM/SAR;PCTEST/E Field/0 DegreesBrain/42.900/1.650



File : c:/idx3/SYSTEM/SARMEAS3/data/Normal/98120315_ZOOM.VLT
Start : 3-Dec-98 02:03:59 pm End : 3-Dec-98 02:10:40 pm

Radio Type : SONY
Model Number : L5ACMZ100SB2
Serial Number : 741
Frequency : 1851.25 MHz
Peak Trans. Pwr : 0.400 W
Start Trans. Pwr : 0.400 W
Antenna Type : Helical
Antenna Posn. : Out
Phantom Type : Head
Phantom Posn. : Left Ear
Scan Type : ZOOM/SAR
Probe Name : PCTEST
Field Type : E Field
Orientation : 0 Degrees

Mixture Type = Brain
Mixture Dielectric Constant = 42.900
Mixture Conductivity = 1.650

Comment :
CHAN 0025 PCS PHONE
PCTEST CDMA MODE
PCTEST

Robot : PCTEST

Probe Offset = 0.25 cm
Sensor Factor = 0.0108
Conversion Factor = 1.200

PCTEST Amplifier Channel Settings : 0.250 0.233 0.225

Max Location : X = 0.750, Y = 1.500, Z = 0.000 (cm) Value = 8.194

Measured Values (volts) =
8.119E-003 6.055E-003 4.489E-003 3.442E-003 2.600E-003 2.729E-003
2.380E-003 1.308E-003 1.872E-003 1.326E-003 1.244E-003 9.405E-004
9.922E-004 1.328E-003 3.877E-004 3.553E-004 1.212E-003 3.670E-004
3.634E-004 5.549E-004 1.131E-003

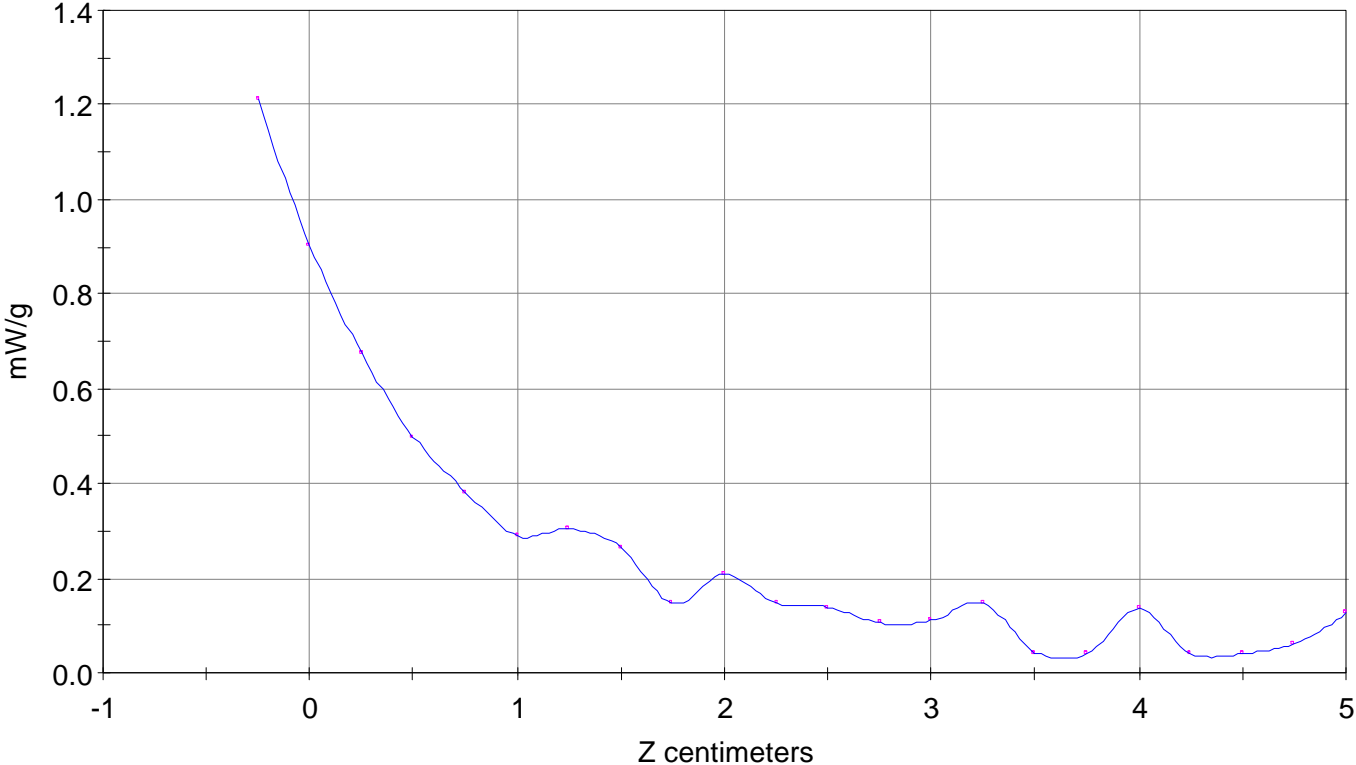
Calc. Voltage @ Surface (Vs) = 0.0109

Voltage @ 1.00 cm (Vt) = 0.0034

Ave. Voltage (Vs+Vt)/2 = 0.0071

Ave. SAR over 1 g (mW/g) = 0.7978

SAR Scan
File : 98120315_ZOOM
Start : 3-Dec-98 02:03:59 pm End : 3-Dec-98 02:10:40 pm
SONY/L5ACMZ100SB2/741;1851.25MHz;W;Helical/Out;
Head/Left Ear;ZOOM/SAR;PCTEST/E Field/0 DegreesBrain/42.900/1.650



File : c:/idx3/SYSTEM/SARMEAS3/data/Normal/98120308_ZOOM.VLT
Start : 3-Dec-98 10:01:57 am End : 3-Dec-98 10:11:32 am

Radio Type : SONY
Model Number : L5ACMZ100SB2
Serial Number : 741
Frequency : 1880 MHz
Peak Trans. Pwr : 0.400 W
Start Trans. Pwr: 0.400 W
Antenna Type : Helical
Antenna Posn. : In
Phantom Type : Head
Phantom Posn. : Left Ear
Scan Type : ZOOM/SAR
Probe Name : PCTEST
Field Type : E Field
Orientation : 0 Degrees

Mixture Type = Brain
Mixture Dielectric Constant = 42.900
Mixture Conductivity = 1.650

Comment :
CHAN 600 PCS PHONE
PCTEST CDMA MODE
PCTEST

Robot : PCTEST

Probe Offset = 0.25 cm
Sensor Factor = 0.0108
Conversion Factor = 1.200

PCTEST Amplifier Channel Settings : 0.250 0.233 0.225

Max Location : X = 0.000, Y = 1.750, Z = 0.000 (cm) Value = 10.988

Measured Values (volts) =
9.588E-003 7.229E-003 4.909E-003 3.641E-003 2.892E-003 2.775E-003
2.509E-003 2.228E-003 1.477E-003 1.250E-003 1.403E-003 7.760E-004
6.901E-004 1.084E-003 7.526E-004 6.383E-004 1.099E-003 2.540E-004
1.026E-003 1.003E-003 2.363E-004

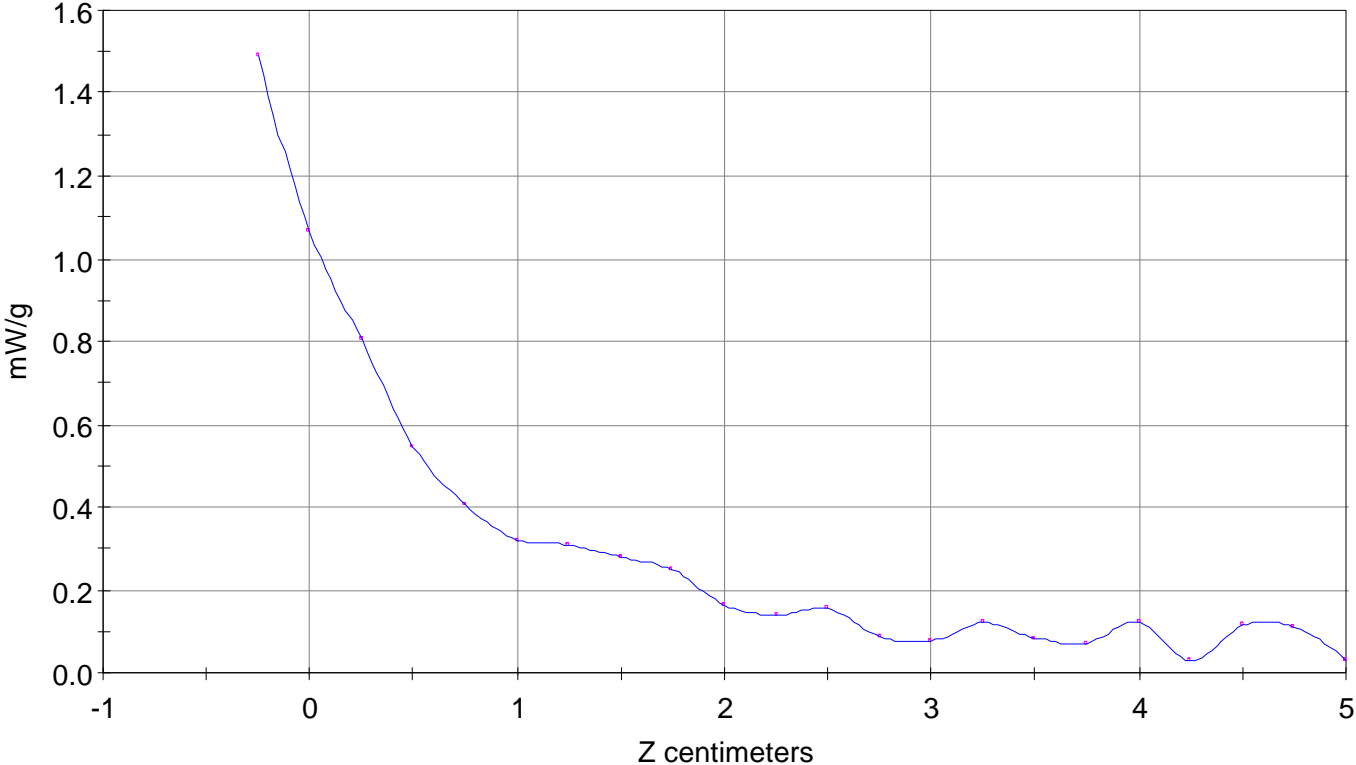
Calc. Voltage @ Surface (Vs) = 0.0134

Voltage @ 1.00 cm (Vt) = 0.0036

Ave. Voltage (Vs+Vt)/2 = 0.0085

Ave. SAR over 1 g (mW/g) = 0.9478

SAR Scan
File : 98120308_ZOOM
Start : 3-Dec-98 10:01:57 am End : 3-Dec-98 10:11:32 am
SONY/L5ACMZ100SB2/741;1880MHz;W;Helical/In;
Head/Left Ear;ZOOM/SAR;PCTEST/E Field/0 DegreesBrain/42.900/1.650



File : c:/idx3/SYSTEM/SARMEAS3/data/Normal/98120316_ZOOM.VLT
Start : 3-Dec-98 02:17:09 pm End : 3-Dec-98 02:28:34 pm

Radio Type : SONY
Model Number : L5ACMZ100SB2
Serial Number : 741
Frequency : 1880 MHz
Peak Trans. Pwr : 0.400 W
Start Trans. Pwr: 0.400 W
Antenna Type : Helical
Antenna Posn. : Out
Phantom Type : Head
Phantom Posn. : Left Ear
Scan Type : ZOOM/SAR
Probe Name : PCTEST
Field Type : E Field
Orientation : 0 Degrees

Mixture Type = Brain
Mixture Dielectric Constant = 42.900
Mixture Conductivity = 1.650

Comment :
CHAN 0600 PCS PHONE
PCTEST CDMA MODE
PCTEST

Robot : PCTEST

Probe Offset = 0.25 cm
Sensor Factor = 0.0108
Conversion Factor = 1.200

PCTEST Amplifier Channel Settings : 0.250 0.233 0.225

Max Location : X = 0.750, Y = 1.250, Z = 0.000 (cm) Value = 7.559

Measured Values (volts) =
6.531E-003 5.769E-003 4.303E-003 2.888E-003 2.566E-003 2.669E-003
1.402E-003 1.154E-003 9.052E-004 7.935E-004 8.015E-004 7.835E-004
1.179E-003 9.175E-004 9.661E-004 8.501E-004 2.828E-004 1.124E-003
3.141E-004 7.553E-004 2.380E-004

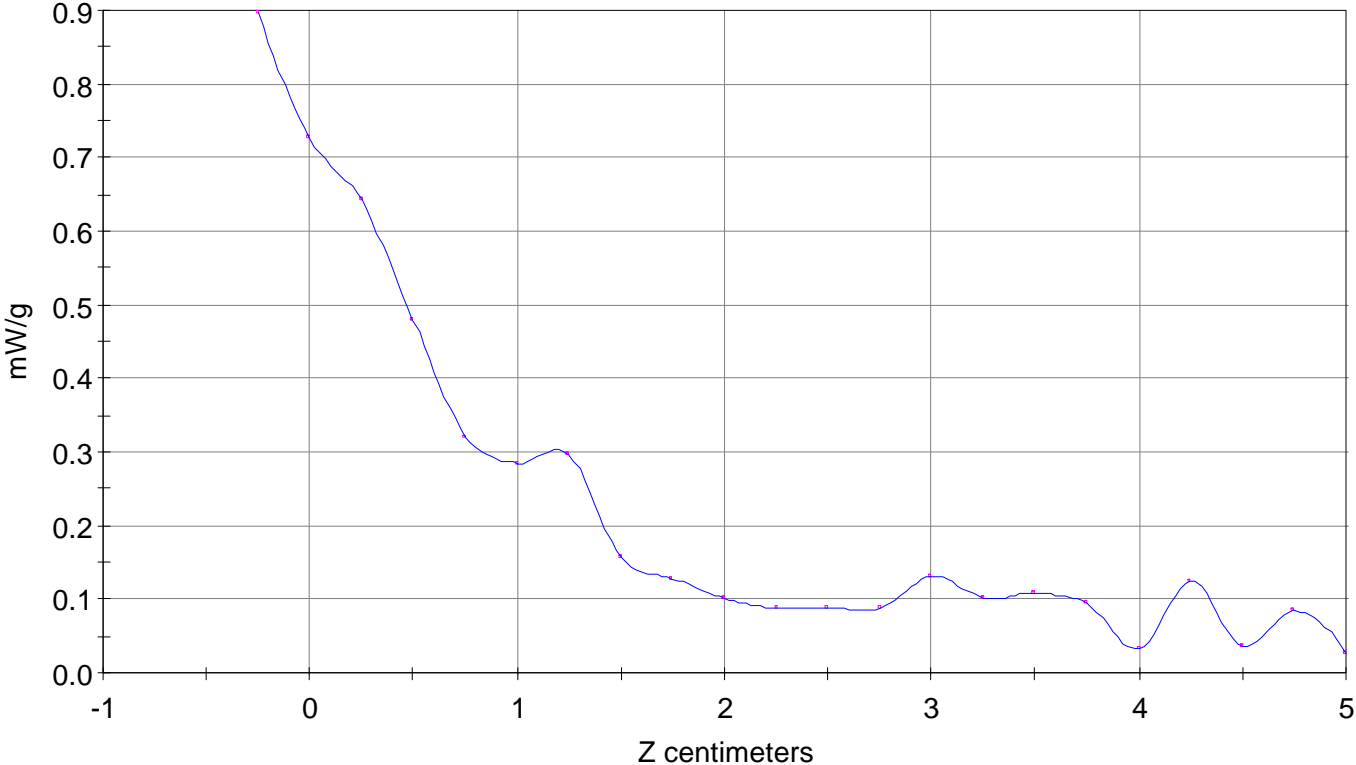
Calc. Voltage @ Surface (Vs) = 0.0081

Voltage @ 1.00 cm (Vt) = 0.0029

Ave. Voltage (Vs+Vt)/2 = 0.0055

Ave. SAR over 1 g (mW/g) = 0.6090

SAR Scan
File : 98120316_ZOOM
Start : 3-Dec-98 02:17:09 pm End : 3-Dec-98 02:28:34 pm
SONY/L5ACMZ100SB2/741;1880MHz;W;Helical/Out;
Head/Left Ear;ZOOM/SAR;PCTEST/E Field/0 DegreesBrain/42.900/1.650



File : c:/idx3/SYSTEM/SARMEAS3/data/Normal/98120309_ZOOM.VLT
Start : 3-Dec-98 10:12:36 am End : 3-Dec-98 10:24:04 am

Radio Type : SONY
Model Number : L5ACMZ100SB2
Serial Number : 741
Frequency : 1908.75 MHz
Peak Trans. Pwr : 0.400 W
Start Trans. Pwr: 0.400 W
Antenna Type : Helical
Antenna Posn. : In
Phantom Type : Head
Phantom Posn. : Left Ear
Scan Type : ZOOM/SAR
Probe Name : PCTEST
Field Type : E Field
Orientation : 0 Degrees

Mixture Type = Brain
Mixture Dielectric Constant = 42.900
Mixture Conductivity = 1.650

Comment :
CHAN 1175 PCS PHONE
PCTEST CDMA MODE
PCTEST

Robot : PCTEST

Probe Offset = 0.25 cm
Sensor Factor = 0.0108
Conversion Factor = 1.200

PCTEST Amplifier Channel Settings : 0.250 0.233 0.225

Max Location : X = 0.500, Y = 1.750, Z = 0.000 (cm) Value = 8.905

Measured Values (volts) =
7.650E-003 5.893E-003 4.333E-003 3.438E-003 2.478E-003 2.674E-003
2.294E-003 1.469E-003 1.206E-003 1.326E-003 1.432E-003 4.649E-004
7.434E-004 1.089E-003 3.338E-004 1.202E-003 1.166E-003 3.462E-004
1.015E-003 1.052E-003 1.024E-003

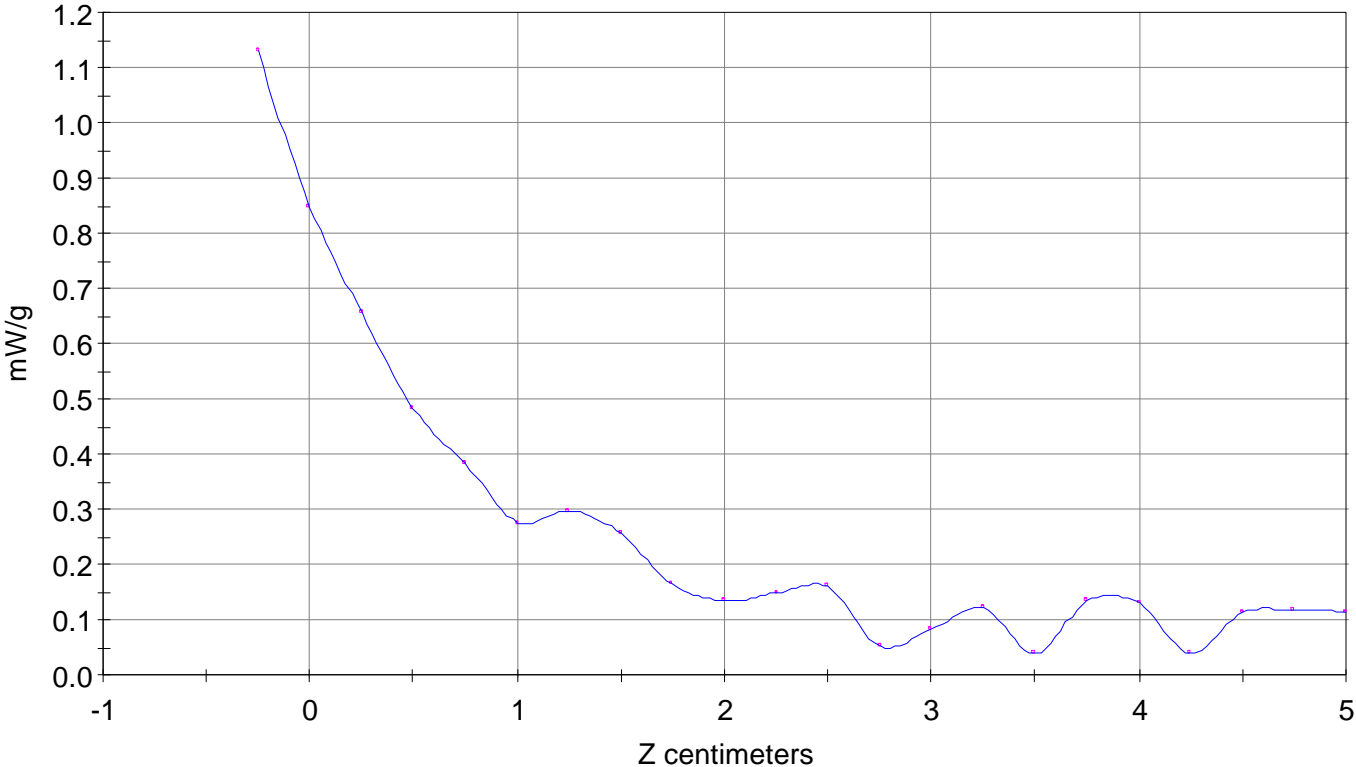
Calc. Voltage @ Surface (Vs) = 0.0102

Voltage @ 1.00 cm (Vt) = 0.0034

Ave. Voltage (Vs+Vt)/2 = 0.0068

Ave. SAR over 1 g (mW/g) = 0.7558

SAR Scan
File : 98120309_ZOOM
Start : 3-Dec-98 10:12:36 am End : 3-Dec-98 10:24:04 am
SONY/L5ACMZ100SB2/741;1908.75MHz;W;Helical/In;
Head/Left Ear;ZOOM/SAR;PCTEST/E Field/0 DegreesBrain/42.900/1.650



File : c:/idx3/SYSTEM/SARMEAS3/data/Normal/98120317_ZOOM.VLT
Start : 3-Dec-98 02:30:41 pm End : 3-Dec-98 02:42:11 pm

Radio Type : SONY
Model Number : L5ACMZ100SB2
Serial Number : 741
Frequency : 1908.75 MHz
Peak Trans. Pwr : 0.400 W
Start Trans. Pwr : 0.400 W
Antenna Type : Helical
Antenna Posn. : Out
Phantom Type : Head
Phantom Posn. : Left Ear
Scan Type : ZOOM/SAR
Probe Name : PCTEST
Field Type : E Field
Orientation : 0 Degrees

Mixture Type = Brain
Mixture Dielectric Constant = 42.900
Mixture Conductivity = 1.650

Comment :
CHAN 1175 PCS PHONE
PCTEST CDMA MODE
PCTEST

Robot : PCTEST

Probe Offset = 0.25 cm
Sensor Factor = 0.0108
Conversion Factor = 1.200

PCTEST Amplifier Channel Settings : 0.250 0.233 0.225

Max Location : X = 0.750, Y = 1.000, Z = 0.000 (cm) Value = 7.171

Measured Values (volts) =
5.831E-003 5.211E-003 3.217E-003 2.337E-003 2.780E-003 1.399E-003
2.140E-003 1.804E-003 1.031E-003 1.034E-003 8.485E-004 1.200E-003
8.489E-004 4.258E-004 2.212E-004 5.778E-004 1.966E-004 1.074E-003
6.337E-004 9.789E-004 1.476E-004

Calc. Voltage @ Surface (Vs) = 0.0080

Voltage @ 1.00 cm (Vt) = 0.0023

Ave. Voltage (Vs+Vt)/2 = 0.0051

Ave. SAR over 1 g (mW/g) = 0.5734

SAR Scan
File : 98120317_ZOOM
Start : 3-Dec-98 02:30:41 pm End : 3-Dec-98 02:42:11 pm
SONY/L5ACMZ100SB2/741;1908.75MHz;W;Helical/Out;
Head/Left Ear;ZOOM/SAR;PCTEST/E Field/0 DegreesBrain/42.900/1.650

