

File : c:/idx3/SYSTEM/SARMEAS3/data/Normal/99052105_ZOOM.VLT

Start : 21-May-99 03:00:44 pm End : 21-May-99 03:09:16 pm

Radio Type : Sony
Model Number : CM-SB200
Serial Number : 04
Frequency : 824.04 MHz
Peak Trans. Pwr : 0.598 W
Start Trans. Pwr : 0.598 W
Antenna Type : Helical
Antenna Posn. : In
Phantom Type : Head
Phantom Posn. : Left Ear
Scan Type : ZOOM/SAR
Probe Name : PCTEST
Field Type : E Field
Orientation : 0 Degrees

Mixture Type = Brain
Mixture Dielectric Constant = 43.400
Mixture Conductivity = 0.900

Comment :
SONY DUAL BAND PHONE
CHANNEL 991 FM MODE

Robot : PCTEST

Probe Offset = 0.25 cm
Sensor Factor = 0.0108
Conversion Factor = 0.790

PCTEST Amplifier Channel Settings : 0.168 0.136 0.132

Max Location : X = 3.250, Y = -5.000, Z = 0.000 (cm) Value = 22.634

Measured Values (volts) =
2.224E-002 1.890E-002 1.528E-002 1.251E-002 1.047E-002 8.835E-003
7.523E-003 6.286E-003 5.344E-003 4.484E-003 3.805E-003 3.304E-003
2.865E-003 2.540E-003 2.240E-003 2.006E-003 1.725E-003 1.446E-003
1.145E-003 9.156E-004 6.798E-004

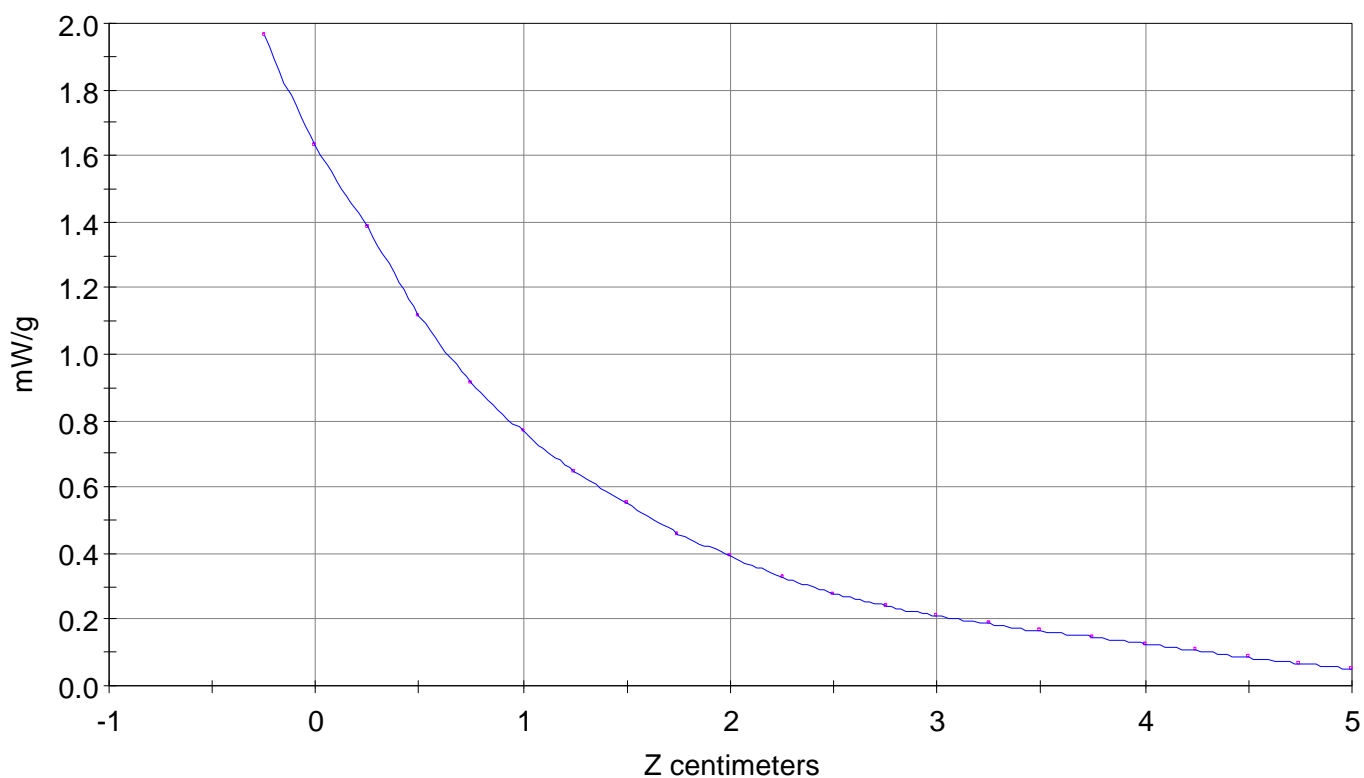
Calc. Voltage @ Surface (Vs) = 0.0268

Voltage @ 1.00 cm (Vt) = 0.0125

Ave. Voltage (Vs+Vt)/2 = 0.0197

Ave. SAR over 1 g (mW/g) = 1.439%

SAR Scan
File : 99052105_ZOOM
Start : 21-May-99 03:00:44 pm End : 21-May-99 03:09:16 pm
Sony/CM-SB200/04;824.04MHz;W;Helical/In;
Head/Left Ear;ZOOM/SAR;PCTEST/E Field/0 DegreesBrain/43.400/0.900

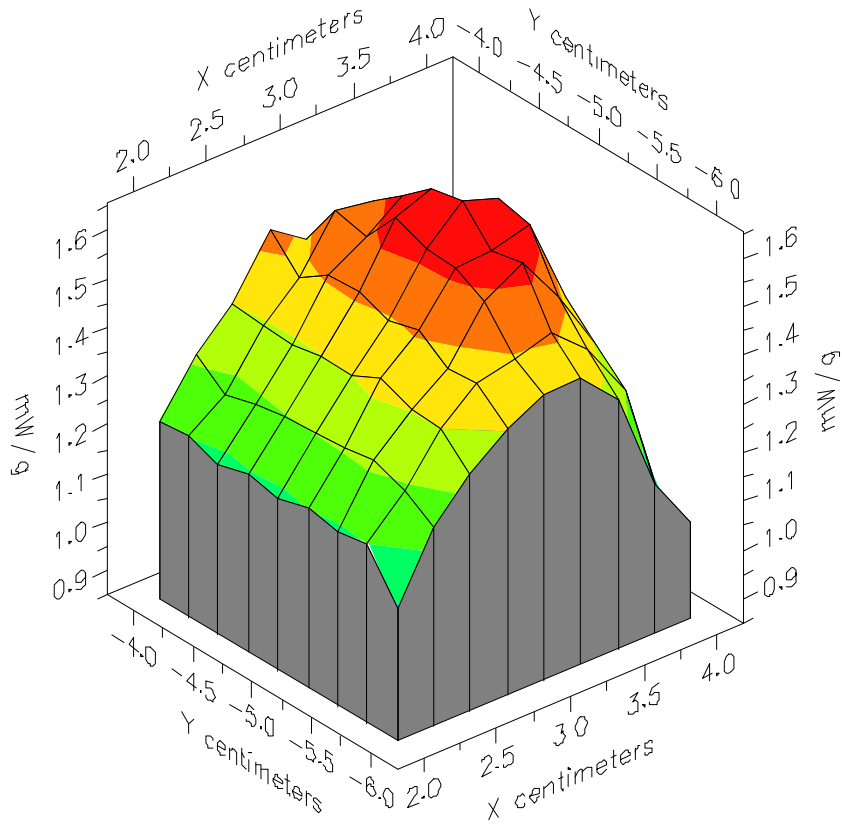


File : 99052105_ZOOM

Start : 21-May-99 03:00:44 pm End : 21-May-99 03:09:16 pm

Sony/CM-SB200/04;824.04MHz;W;Helical/In;

Head/Left Ear;ZOOM/SAR;PCTEST/E Field/0 DegreesBrain/43.400/0.900



File : 99052105_ZOOM

Start : 21-May-99 03:00:44 pm End : 21-May-99 03:09:16 pm

Sony/CM-SB200/04;824.04MHz;W;Helical/In;

Head/Left Ear;ZOOM/SAR;PCTEST/E Field/0 DegreesBrain/43.400/0.900

