

File : c:/idx3/SYSTEM/SARMEAS3/data/Normal/98121003_ZOOM.VLT
Start : 10-Dec-98 09:41:11 am End : 10-Dec-98 09:49:44 am

Radio Type : SONY
Model Number : L5ACMSB2
Serial Number : 2123
Frequency : 1880 MHz
Peak Trans. Pwr : 0.320 W
Start Trans. Pwr: 0.320 W
Antenna Type : Helical
Antenna Posn. : In
Phantom Type : Head
Phantom Posn. : Left Ear
Scan Type : ZOOM/SAR
Probe Name : PCTEST
Field Type : E Field
Orientation : 0 Degrees

Mixture Type = Brain
Mixture Dielectric Constant = 42.900
Mixture Conductivity = 1.650

Comment :
SONY PCS PHONE
CHAN 600 CDMA MODE
PCTEST

Robot : PCTEST

Probe Offset = 0.25 cm
Sensor Factor = 0.0108
Conversion Factor = 1.200

PCTEST Amplifier Channel Settings : 0.250 0.233 0.225

Max Location : X = 2.250, Y = 0.500, Z = 0.000 (cm) Value = 13.749

Measured Values (volts) =
1.275E-002 1.002E-002 7.485E-003 5.659E-003 4.302E-003 3.273E-003
2.581E-003 1.948E-003 1.535E-003 1.260E-003 1.017E-003 7.730E-004
6.255E-004 5.290E-004 4.287E-004 4.331E-004 4.234E-004 3.426E-004
2.704E-004 2.380E-004 2.181E-004

Calc. Voltage @ Surface (Vs) = 0.0166

Voltage @ 1.00 cm (Vt) = 0.0057

Ave. Voltage (Vs+Vt)/2 = 0.0111

Ave. SAR over 1 g (mW/g) = 1.2388

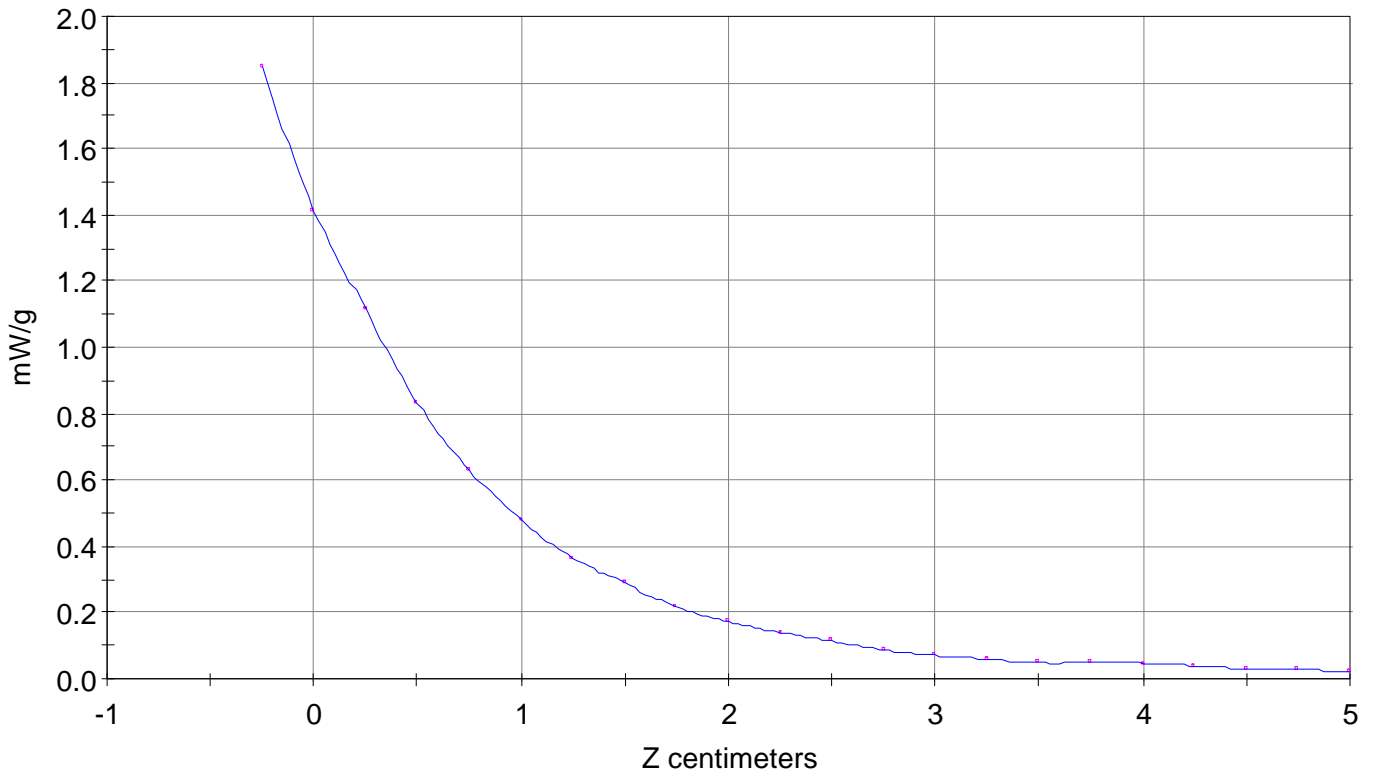
SAR Scan

File : 98121003_ZOOM

Start : 10-Dec-98 09:41:11 am End : 10-Dec-98 09:49:44 am

SONY/L5ACMSB2/2123;1880MHz;W;Helical/In;

Head/Left Ear;ZOOM/SAR;PCTEST/E Field/0 DegreesBrain/42.900/1.650

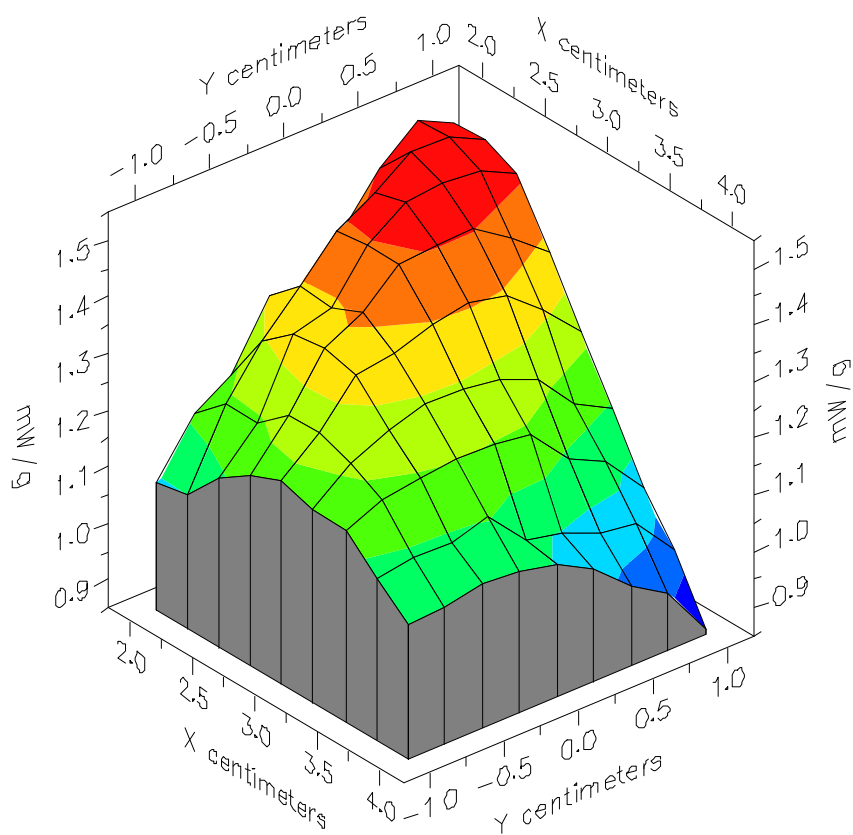


File : 98121003_ZOOM

Start : 10-Dec-98 09:41:11 am End : 10-Dec-98 09:49:44 am

SONY/L5ACMSB2/2123;1880MHz;W;Helical/In;

Head/Left Ear;ZOOM/SAR;PCTEST/E Field/0 DegreesBrain/42.900/1.650

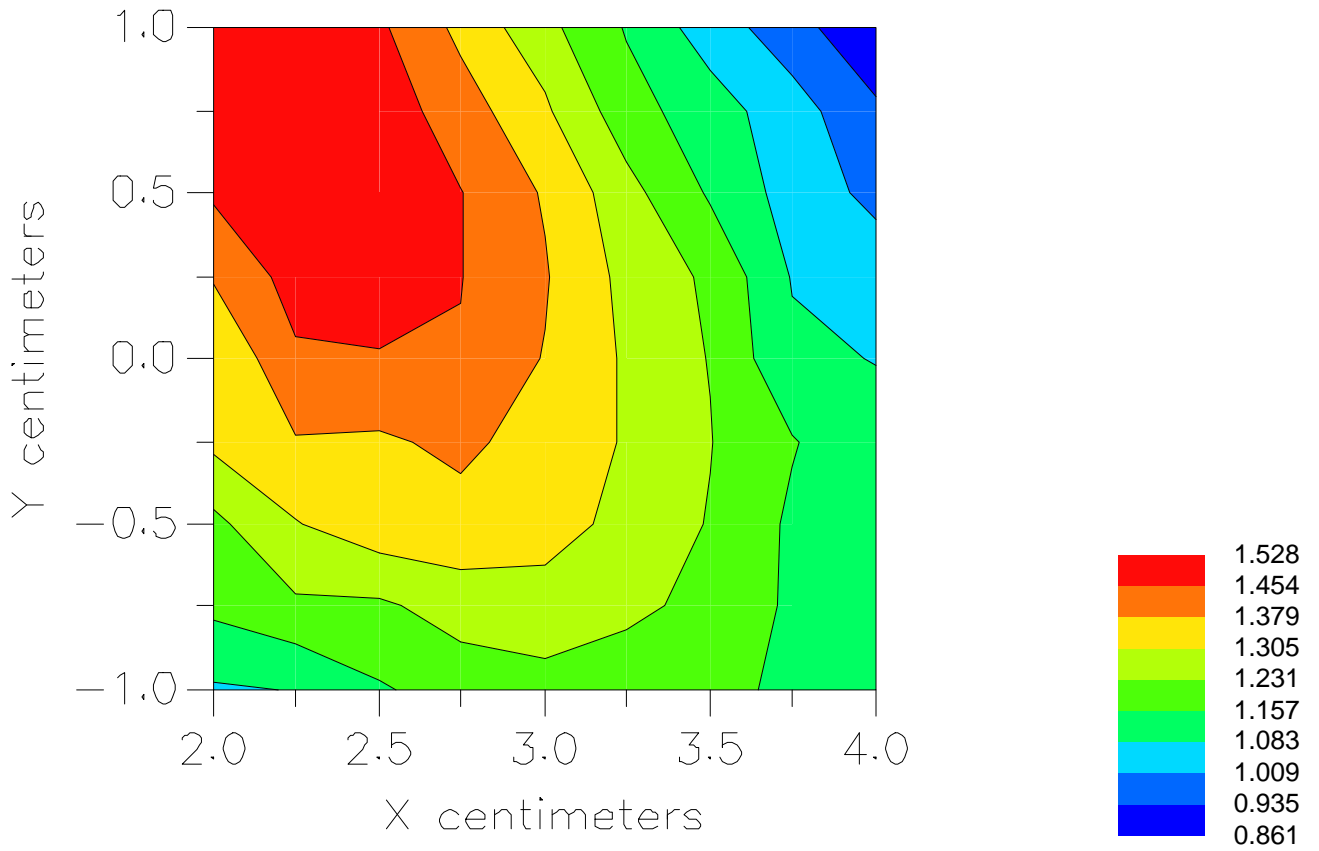


File : 98121003_ZOOM

Start : 10-Dec-98 09:41:11 am End : 10-Dec-98 09:49:44 am

SONY/L5ACMSB2/2123;1880MHz;W;Helical/In;

Head/Left Ear;ZOOM/SAR;PCTEST/E Field/0 DegreesBrain/42.900/1.650



File : c:/idx3/SYSTEM/SARMEAS3/data/Normal/98121004_ZOOM.VLT
Start : 10-Dec-98 09:51:07 am End : 10-Dec-98 10:00:49 am

Radio Type : SONY
Model Number : L5ACMSB2
Serial Number : 2123
Frequency : 1880 MHz
Peak Trans. Pwr : 0.320 W
Start Trans. Pwr : 0.320 W
Antenna Type : Helical
Antenna Posn. : Out
Phantom Type : Head
Phantom Posn. : Left Ear
Scan Type : ZOOM/SAR
Probe Name : PCTEST
Field Type : E Field
Orientation : 0 Degrees

Mixture Type = Brain
Mixture Dielectric Constant = 42.900
Mixture Conductivity = 1.650

Comment :
SONY PCS PHONE
CHAN 600 CDMA MODE
PCTEST

Robot : PCTEST

Probe Offset = 0.25 cm
Sensor Factor = 0.0108
Conversion Factor = 1.200

PCTEST Amplifier Channel Settings : 0.250 0.233 0.225

Max Location : X = 2.250, Y = 0.500, Z = 0.000 (cm) Value = 6.893

Measured Values (volts) =
6.800E-003 5.397E-003 4.087E-003 3.083E-003 2.395E-003 1.899E-003
1.491E-003 1.145E-003 9.414E-004 7.715E-004 6.628E-004 5.430E-004
4.410E-004 3.570E-004 3.263E-004 2.935E-004 3.072E-004 2.766E-004
2.298E-004 2.016E-004 2.129E-004

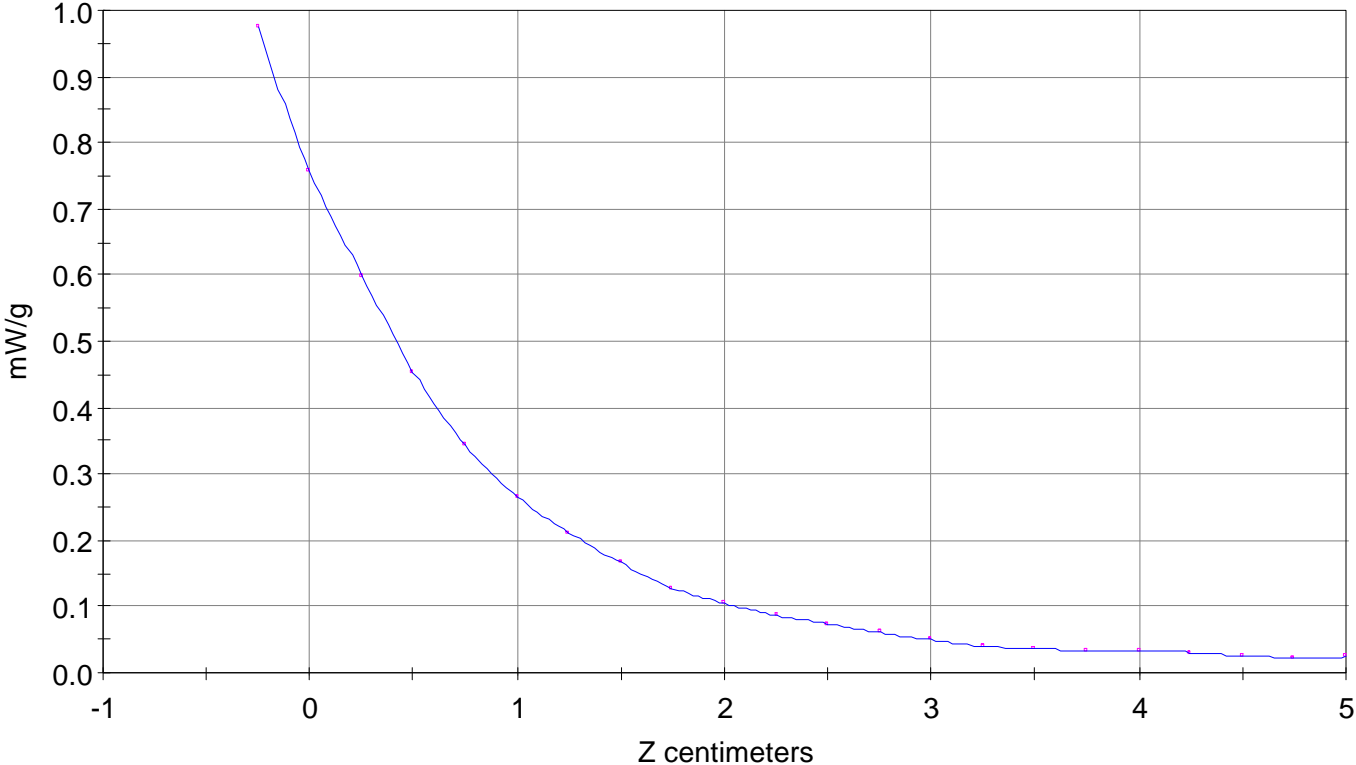
Calc. Voltage @ Surface (Vs) = 0.0088

Voltage @ 1.00 cm (Vt) = 0.0031

Ave. Voltage (Vs+Vt)/2 = 0.0059

Ave. SAR over 1 g (mW/g) = 0.6588

SAR Scan
File : 98121004_ZOOM
Start : 10-Dec-98 09:51:07 am End : 10-Dec-98 10:00:49 am
SONY/L5ACMSB2/2123;1880MHz;W;Helical/Out;
Head/Left Ear;ZOOM/SAR;PCTEST/E Field/0 DegreesBrain/42.900/1.650

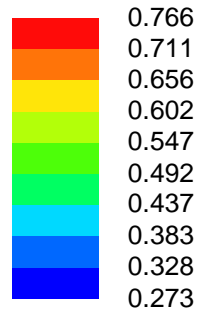
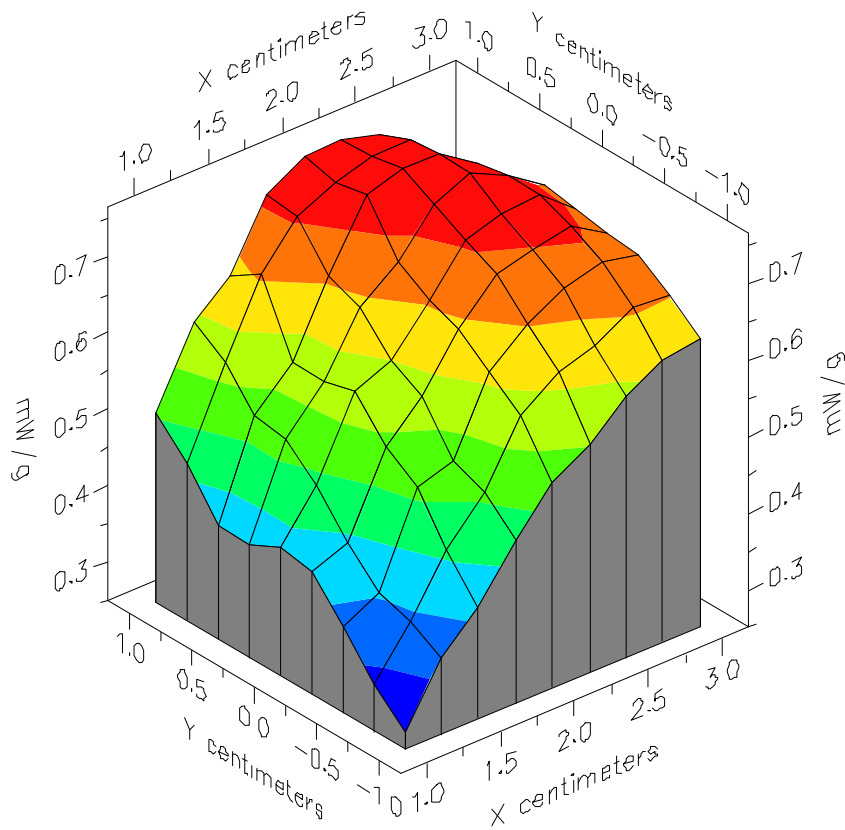


File : 98121004_ZOOM

Start : 10-Dec-98 09:51:07 am End : 10-Dec-98 10:00:49 am

SONY/L5ACMSB2/2123;1880MHz;W;Helical/Out;

Head/Left Ear;ZOOM/SAR;PCTEST/E Field/0 DegreesBrain/42.900/1.650



File : 98121004_ZOOM

Start : 10-Dec-98 09:51:07 am End : 10-Dec-98 10:00:49 am

SONY/L5ACMSB2/2123;1880MHz;W;Helical/Out;

Head/Left Ear;ZOOM/SAR;PCTEST/E Field/0 DegreesBrain/42.900/1.650

