

File : c:/idx3/SYSTEM/SARMEAS3/data/Normal/98120805\_ZOOM.VLT  
Start : 8-Dec-98 09:42:05 am End : 8-Dec-98 09:52:48 am

Radio Type : SONY  
Model Number : L5ACMDM4  
Serial Number : 2122  
Frequency : 836.49 MHz  
Peak Trans. Pwr : 0.600 W  
Start Trans. Pwr: 0.600 W  
Antenna Type : Helical  
Antenna Posn. : In  
Phantom Type : Head  
Phantom Posn. : Left Ear  
Scan Type : ZOOM/SAR  
Probe Name : PCTEST  
Field Type : E Field  
Orientation : 0 Degrees

Mixture Type = Brain  
Mixture Dielectric Constant = 43.400  
Mixture Conductivity = 0.900

Comment :  
SONY DUAL MODE PHONE  
CHAN 383 FM MODE  
PCTEST

Robot : PCTEST

Probe Offset = 0.25 cm  
Sensor Factor = 0.0108  
Conversion Factor = 0.790

PCTEST Amplifier Channel Settings : 0.168 0.136 0.132

Max Location : X = 7.000, Y = -2.250, Z = 0.000 (cm) Value = 17.514

Measured Values (volts) =  
1.754E-002 1.650E-002 1.417E-002 1.228E-002 1.139E-002 9.874E-003  
8.454E-003 7.038E-003 5.727E-003 4.446E-003 3.453E-003 2.875E-003  
2.597E-003 2.596E-003 2.755E-003 2.995E-003 3.100E-003 3.007E-003  
2.576E-003 1.971E-003 1.301E-003

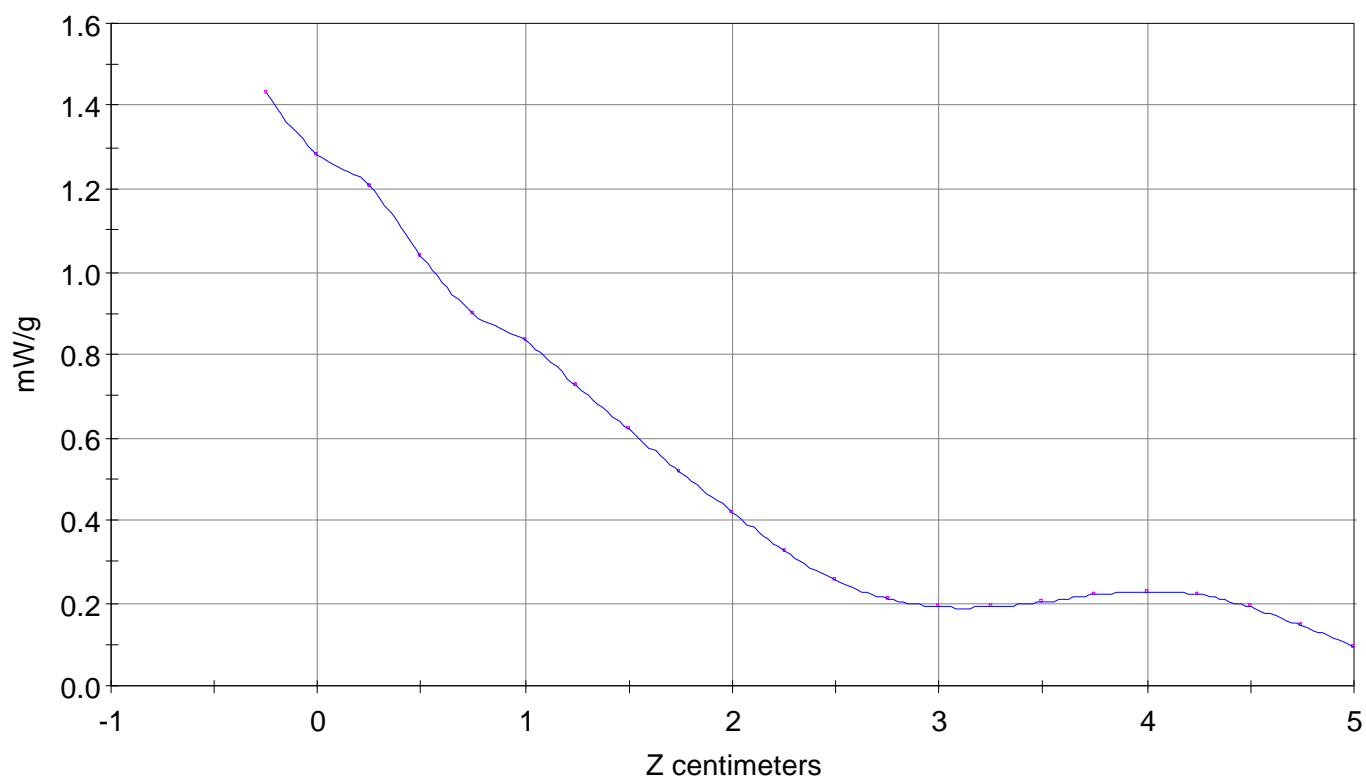
Calc. Voltage @ Surface (Vs) = 0.0195

Voltage @ 1.00 cm (Vt) = 0.0123

Ave. Voltage (Vs+Vt)/2 = 0.0159

Ave. SAR over 1 g (mW/g) = 1.1638

SAR Scan  
File : 98120805\_ZOOM  
Start : 8-Dec-98 09:42:05 am End : 8-Dec-98 09:52:48 am  
SONY/L5ACMDM4/2122;836.49MHz;W;Helical/In;  
Head/Left Ear;ZOOM/SAR;PCTEST/E Field/0 DegreesBrain/43.400/0.900

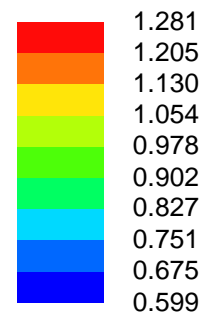
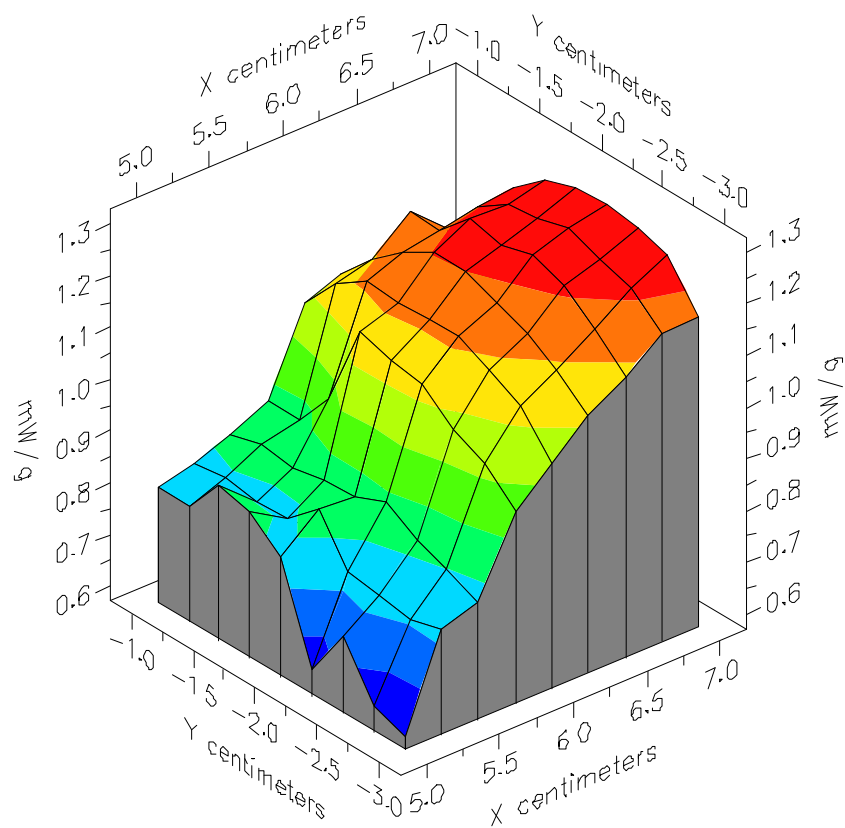


File : 98120805\_ZOOM

Start : 8-Dec-98 09:42:05 am End : 8-Dec-98 09:52:48 am

SONY/L5ACMDM4/2122;836.49MHz;W;Helical/In;

Head/Left Ear;ZOOM/SAR;PCTEST/E Field/0 DegreesBrain/43.400/0.900

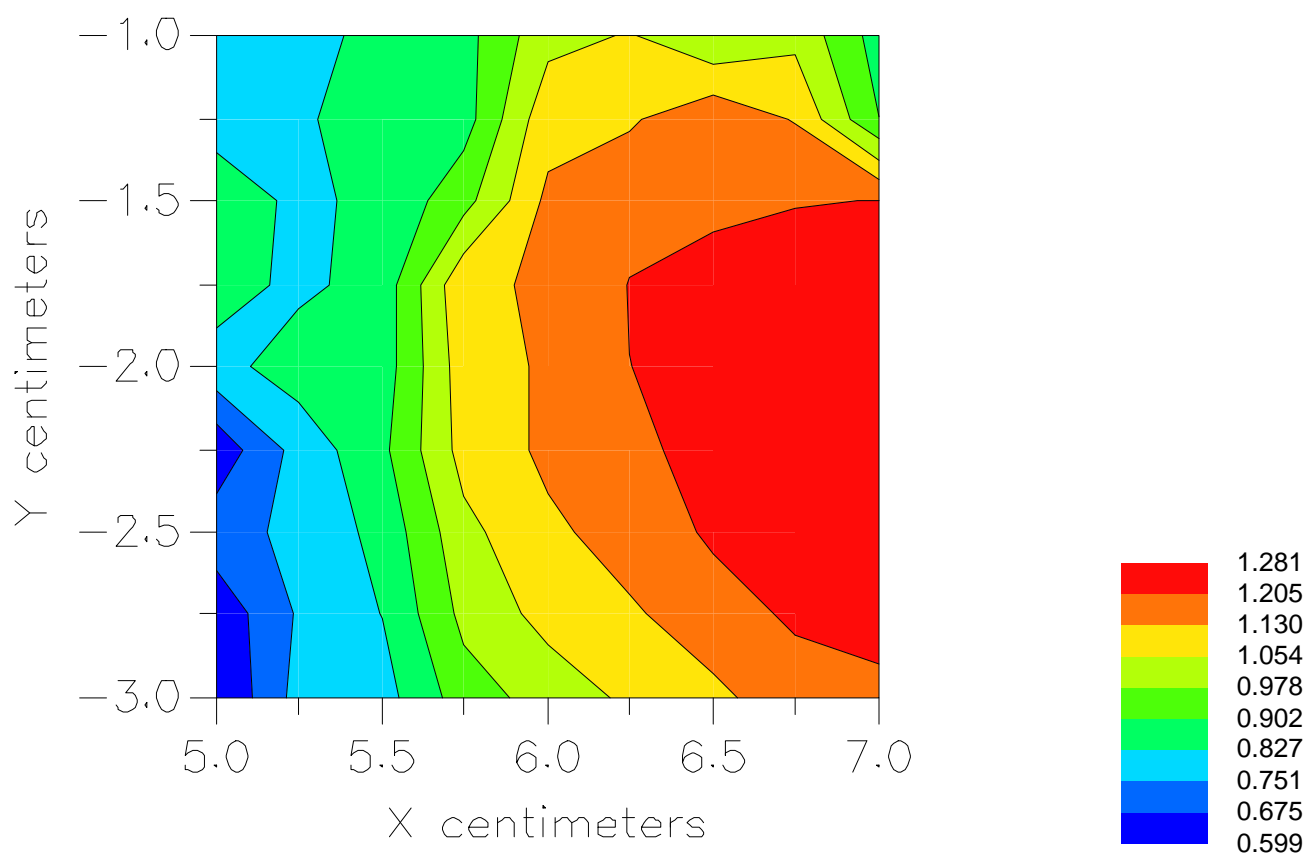


File : 98120805\_ZOOM

Start : 8-Dec-98 09:42:05 am End : 8-Dec-98 09:52:48 am

SONY/L5ACMDM4/2122;836.49MHz;W;Helical/In;

Head/Left Ear;ZOOM/SAR;PCTEST/E Field/0 DegreesBrain/43.400/0.900



File : c:/idx3/SYSTEM/SARMEAS3/data/Normal/98120801\_ZOOM.VLT  
Start : 8-Dec-98 08:46:23 am End : 8-Dec-98 08:55:50 am

Radio Type : SONY  
Model Number : L5ACMDM4  
Serial Number : 2122  
Frequency : 836.49 MHz  
Peak Trans. Pwr : 0.600 W  
Start Trans. Pwr : 0.600 W  
Antenna Type : Helical  
Antenna Posn. : Out  
Phantom Type : Head  
Phantom Posn. : Left Ear  
Scan Type : ZOOM/SAR  
Probe Name : PCTEST  
Field Type : E Field  
Orientation : 0 Degrees

Mixture Type = Brain  
Mixture Dielectric Constant = 43.400  
Mixture Conductivity = 0.900

Comment :  
SONY DUAL MODE PHONE  
CHAN 383 FM MODE  
PCTEST

Robot : PCTEST

Probe Offset = 0.25 cm  
Sensor Factor = 0.0108  
Conversion Factor = 0.790

PCTEST Amplifier Channel Settings : 0.168 0.136 0.132

Max Location : X = 7.000, Y = -2.500, Z = 0.000 (cm) Value = 21.051

Measured Values (volts) =  
2.090E-002 1.865E-002 1.616E-002 1.409E-002 1.264E-002 1.121E-002  
9.652E-003 8.385E-003 7.194E-003 6.050E-003 5.222E-003 4.734E-003  
4.365E-003 4.179E-003 4.016E-003 3.863E-003 3.570E-003 3.206E-003  
2.593E-003 2.081E-003 1.916E-003

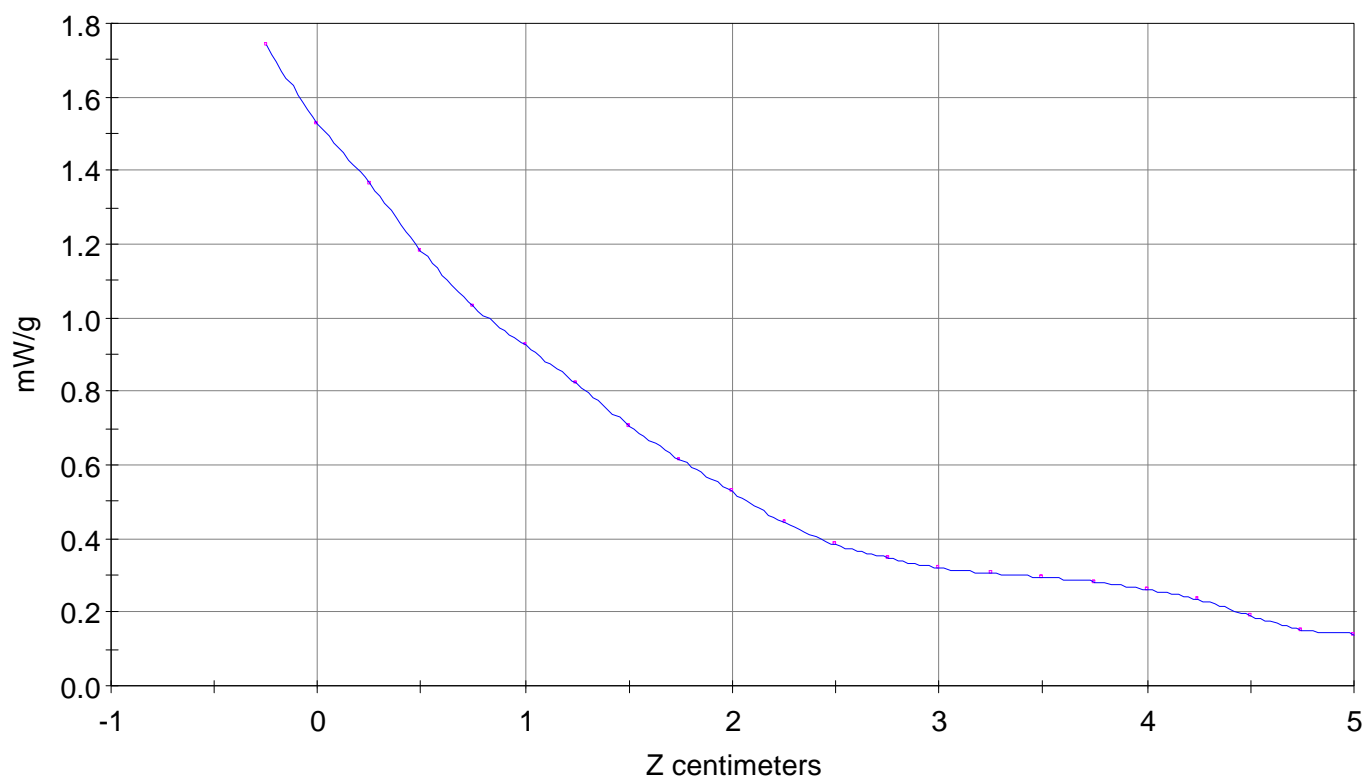
Calc. Voltage @ Surface (Vs) = 0.0238

Voltage @ 1.00 cm (Vt) = 0.0141

Ave. Voltage (Vs+Vt)/2 = 0.0189

Ave. SAR over 1 g (mW/g) = 1.3846

SAR Scan  
File : 98120801\_ZOOM  
Start : 8-Dec-98 08:46:23 am End : 8-Dec-98 08:55:50 am  
SONY/L5ACMDM4/2122;836.49MHz;W;Helical/Out;  
Head/Left Ear;ZOOM/SAR;PCTEST/E Field/0 DegreesBrain/43.400/0.900

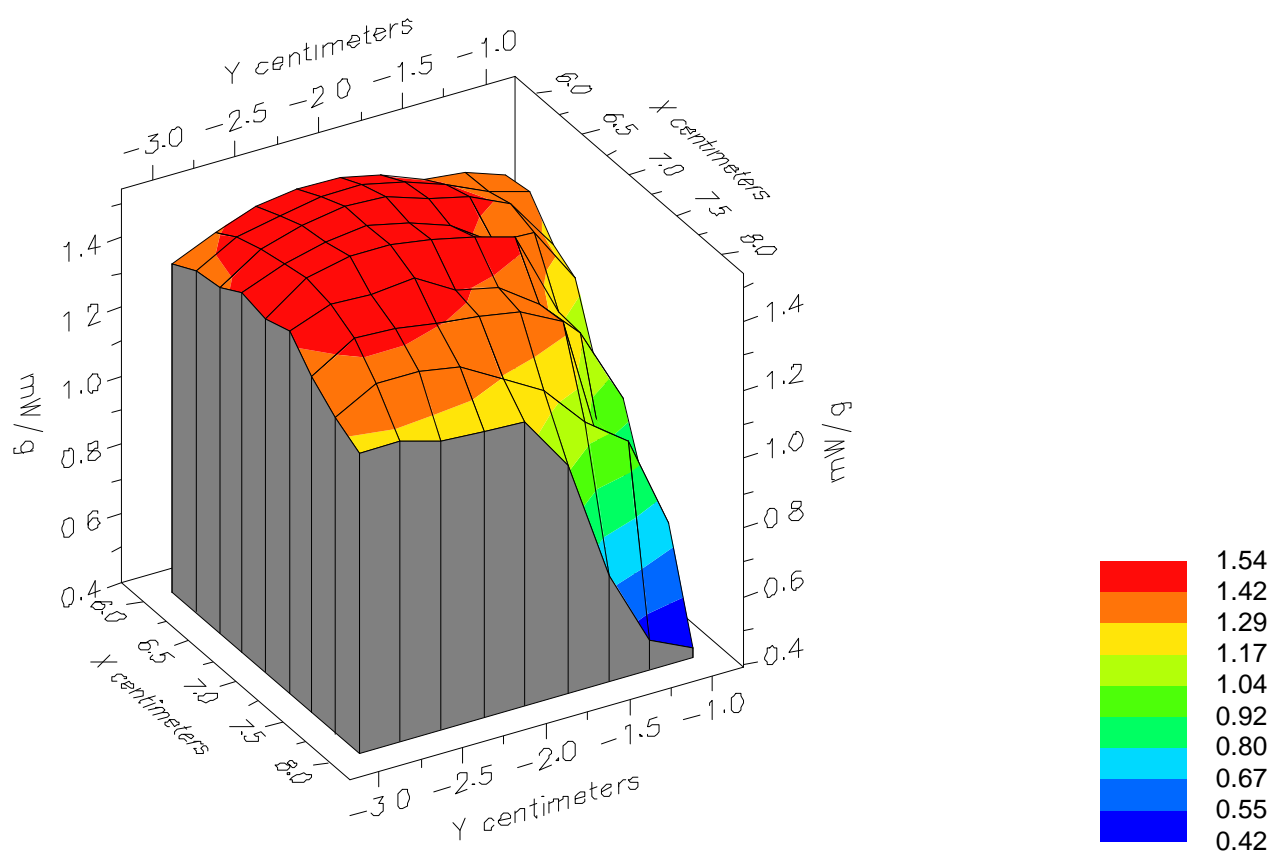


File : 98120801\_ZOOM

Start : 8-Dec-98 08:46:23 am End : 8-Dec-98 08:55:50 am

SONY/L5ACMDM4/2122;836.49MHz;W;Helical/Out;

Head/Left Ear;ZOOM/SAR;PCTEST/E Field/0 DegreesBrain/43.400/0.900



File : 98120801\_ZOOM

Start : 8-Dec-98 08:46:23 am End : 8-Dec-98 08:55:50 am

SONY/L5ACMDM4/2122;836.49MHz;W;Helical/Out;

Head/Left Ear;ZOOM/SAR;PCTEST/E Field/0 DegreesBrain/43.400/0.900

