

File : c:/idx3/SYSTEM/SARMEAS3/data/Normal/98120806_ZOOM.VLT
Start : 8-Dec-98 10:47:50 am End : 8-Dec-98 10:58:04 am

Radio Type : SONY
Model Number : L5ACMDB4
Serial Number : 001
Frequency : 836.49 MHz
Peak Trans. Pwr : 0.600 W
Start Trans. Pwr : 0.600 W
Antenna Type : Helical
Antenna Posn. : In
Phantom Type : Head
Phantom Posn. : Left Ear
Scan Type : ZOOM/SAR
Probe Name : PCTEST
Field Type : E Field
Orientation : 0 Degrees

Mixture Type = Brain
Mixture Dielectric Constant = 43.400
Mixture Conductivity = 0.900

Comment :
SONY DUAL BAND PHONE
CHAN 383 FM MODE
PCTEST

Robot : PCTEST

Probe Offset = 0.25 cm
Sensor Factor = 0.0108
Conversion Factor = 0.790

PCTEST Amplifier Channel Settings : 0.168 0.136 0.132

Max Location : X = 7.500, Y = -2.500, Z = 0.000 (cm) Value = 20.192

Measured Values (volts) =
1.983E-002 1.842E-002 1.573E-002 1.369E-002 1.217E-002 1.058E-002
8.962E-003 7.493E-003 6.051E-003 4.822E-003 4.045E-003 3.435E-003
3.172E-003 3.154E-003 3.326E-003 3.430E-003 3.374E-003 3.107E-003
2.542E-003 2.003E-003 1.658E-003

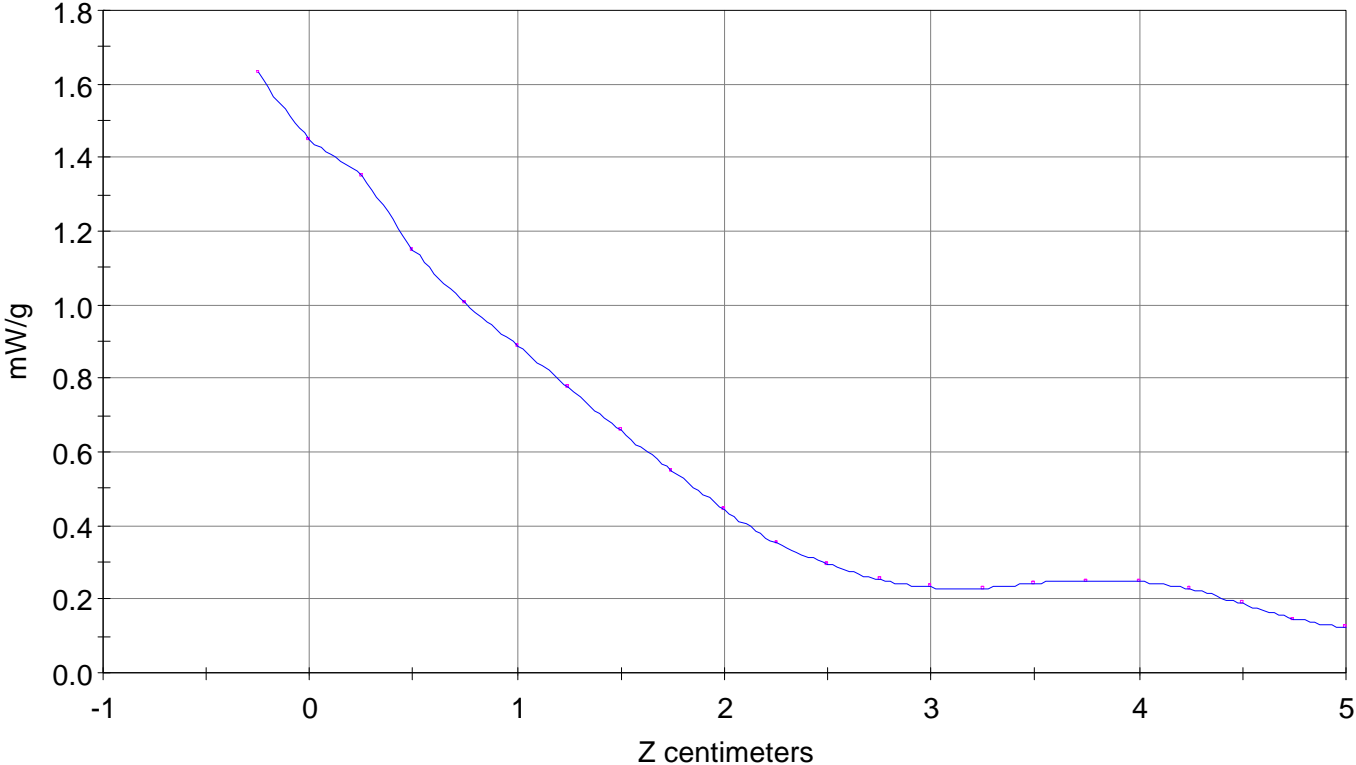
Calc. Voltage @ Surface (Vs) = 0.0223

Voltage @ 1.00 cm (Vt) = 0.0137

Ave. Voltage (Vs+Vt)/2 = 0.0180

Ave. SAR over 1 g (mW/g) = 1.3158

SAR Scan
File : 98120806_ZOOM
Start : 8-Dec-98 10:47:50 am End : 8-Dec-98 10:58:04 am
SONY/L5ACMDB4/001;836.49MHz;W;Helical/In;
Head/Left Ear;ZOOM/SAR;PCTEST/E Field/0 DegreesBrain/43.400/0.900

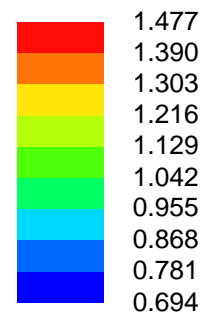
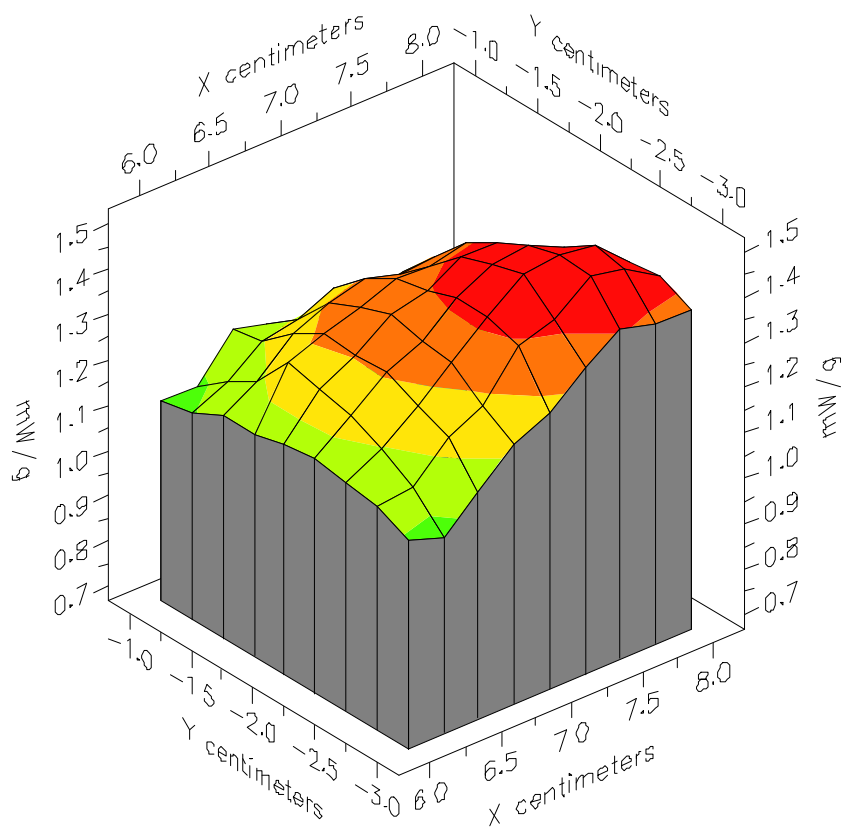


File : 98120806_ZOOM

Start : 8-Dec-98 10:47:50 am End : 8-Dec-98 10:58:04 am

SONY/L5ACMDB4/001;836.49MHz;W;Helical/In;

Head/Left Ear;ZOOM/SAR;PCTEST/E Field/0 DegreesBrain/43.400/0.900

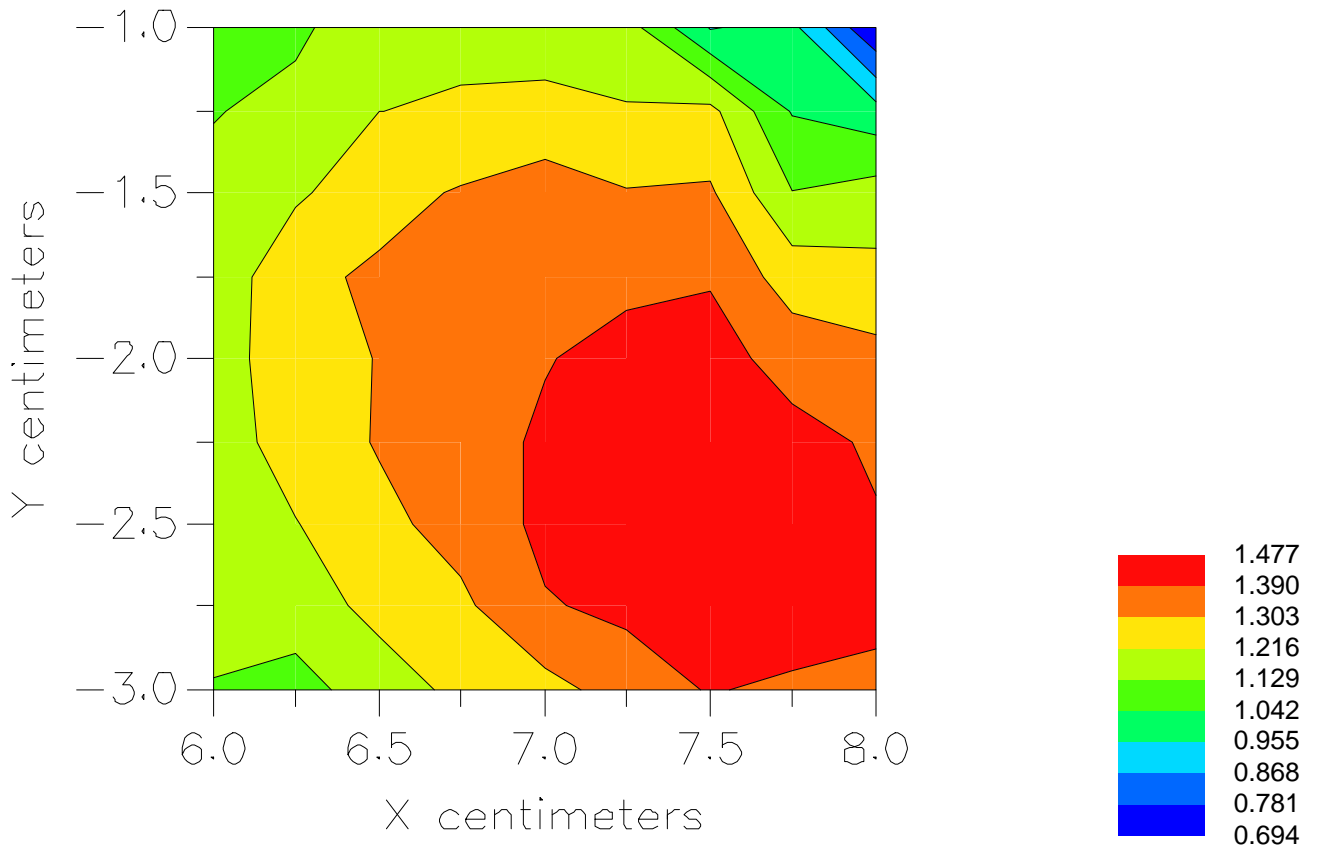


File : 98120806_ZOOM

Start : 8-Dec-98 10:47:50 am End : 8-Dec-98 10:58:04 am

SONY/L5ACMDB4/001;836.49MHz;W;Helical/In;

Head/Left Ear;ZOOM/SAR;PCTEST/E Field/0 DegreesBrain/43.400/0.900



File : c:/idx3/SYSTEM/SARMEAS3/data/Normal/98120808_ZOOM.VLT
Start : 8-Dec-98 11:39:22 am End : 8-Dec-98 11:49:03 am

Radio Type : SONY
Model Number : L5ACMDB4
Serial Number : 001
Frequency : 836.49 MHz
Peak Trans. Pwr : 0.600 W
Start Trans. Pwr : 0.600 W
Antenna Type : Helical
Antenna Posn. : Out
Phantom Type : Head
Phantom Posn. : Left Ear
Scan Type : ZOOM/SAR
Probe Name : PCTEST
Field Type : E Field
Orientation : 0 Degrees

Mixture Type = Brain
Mixture Dielectric Constant = 43.400
Mixture Conductivity = 0.900

Comment :
SONY DUAL BAND PHONE
CHAN 383 FM MODE
PCTEST

Robot : PCTEST

Probe Offset = 0.25 cm
Sensor Factor = 0.0108
Conversion Factor = 0.790

PCTEST Amplifier Channel Settings : 0.168 0.136 0.132

Max Location : X = 7.500, Y = -2.500, Z = 0.000 (cm) Value = 19.119

Measured Values (volts) =
1.896E-002 1.734E-002 1.496E-002 1.301E-002 1.151E-002 9.955E-003
8.450E-003 6.895E-003 5.703E-003 4.516E-003 3.720E-003 3.327E-003
3.024E-003 3.087E-003 3.216E-003 3.253E-003 3.227E-003 3.001E-003
2.392E-003 1.882E-003 1.567E-003

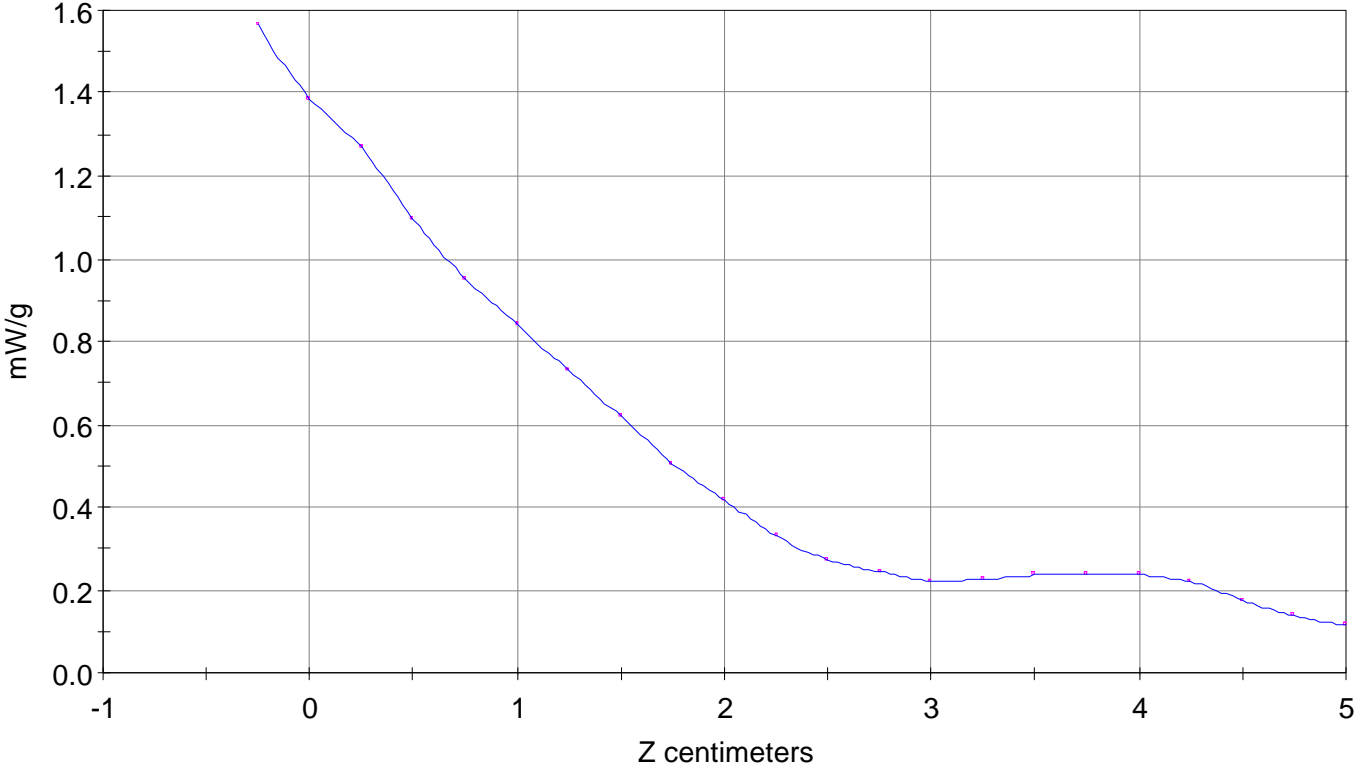
Calc. Voltage @ Surface (Vs) = 0.0214

Voltage @ 1.00 cm (Vt) = 0.0130

Ave. Voltage (Vs+Vt)/2 = 0.0172

Ave. SAR over 1 g (mW/g) = 1.2572

SAR Scan
File : 98120808_ZOOM
Start : 8-Dec-98 11:39:22 am End : 8-Dec-98 11:49:03 am
SONY/L5ACMDB4/001;836.49MHz;W;Helical/Out;
Head/Left Ear;ZOOM/SAR;PCTEST/E Field/0 DegreesBrain/43.400/0.900

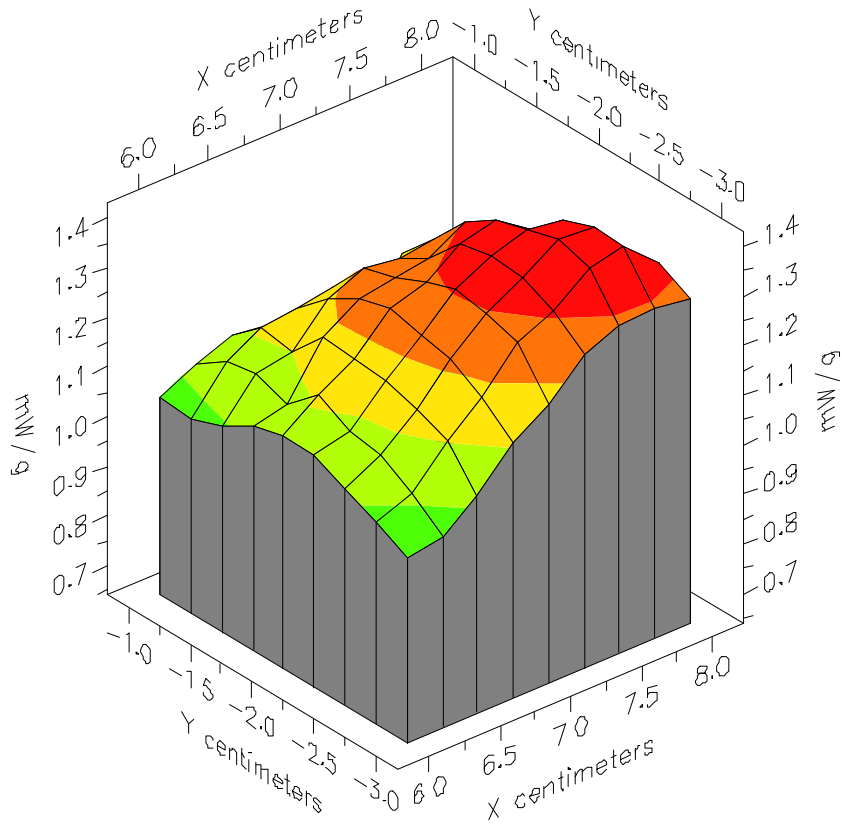


File : 98120808_ZOOM

Start : 8-Dec-98 11:39:22 am End : 8-Dec-98 11:49:03 am

SONY/L5ACMDB4/001;836.49MHz;W;Helical/Out;

Head/Left Ear;ZOOM/SAR;PCTEST/E Field/0 DegreesBrain/43.400/0.900



File : 98120808_ZOOM

Start : 8-Dec-98 11:39:22 am End : 8-Dec-98 11:49:03 am

SONY/L5ACMDB4/001;836.49MHz;W;Helical/Out;

Head/Left Ear;ZOOM/SAR;PCTEST/E Field/0 DegreesBrain/43.400/0.900

