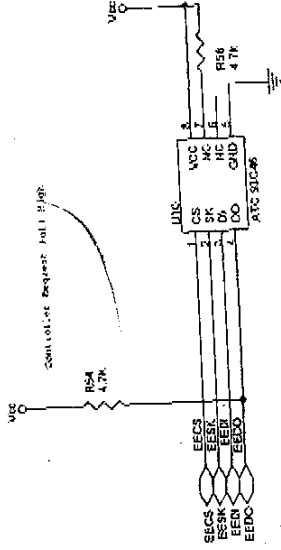


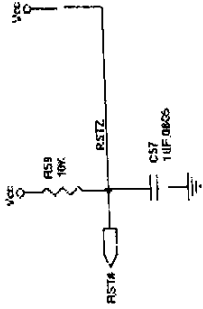
EXHIBIT D

Circuit Diagram

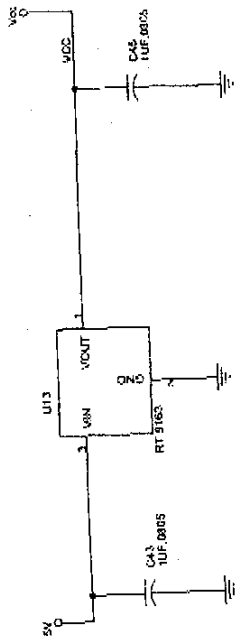
EEPROM



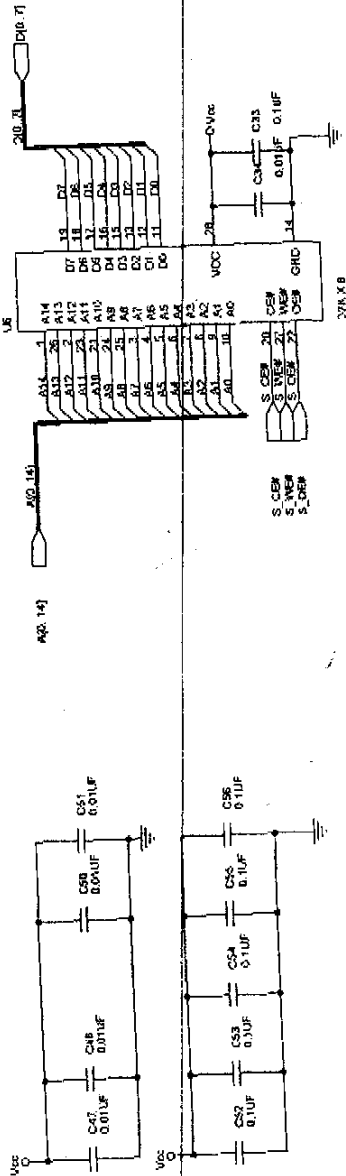
RESET CELL



5V to 3.3V power

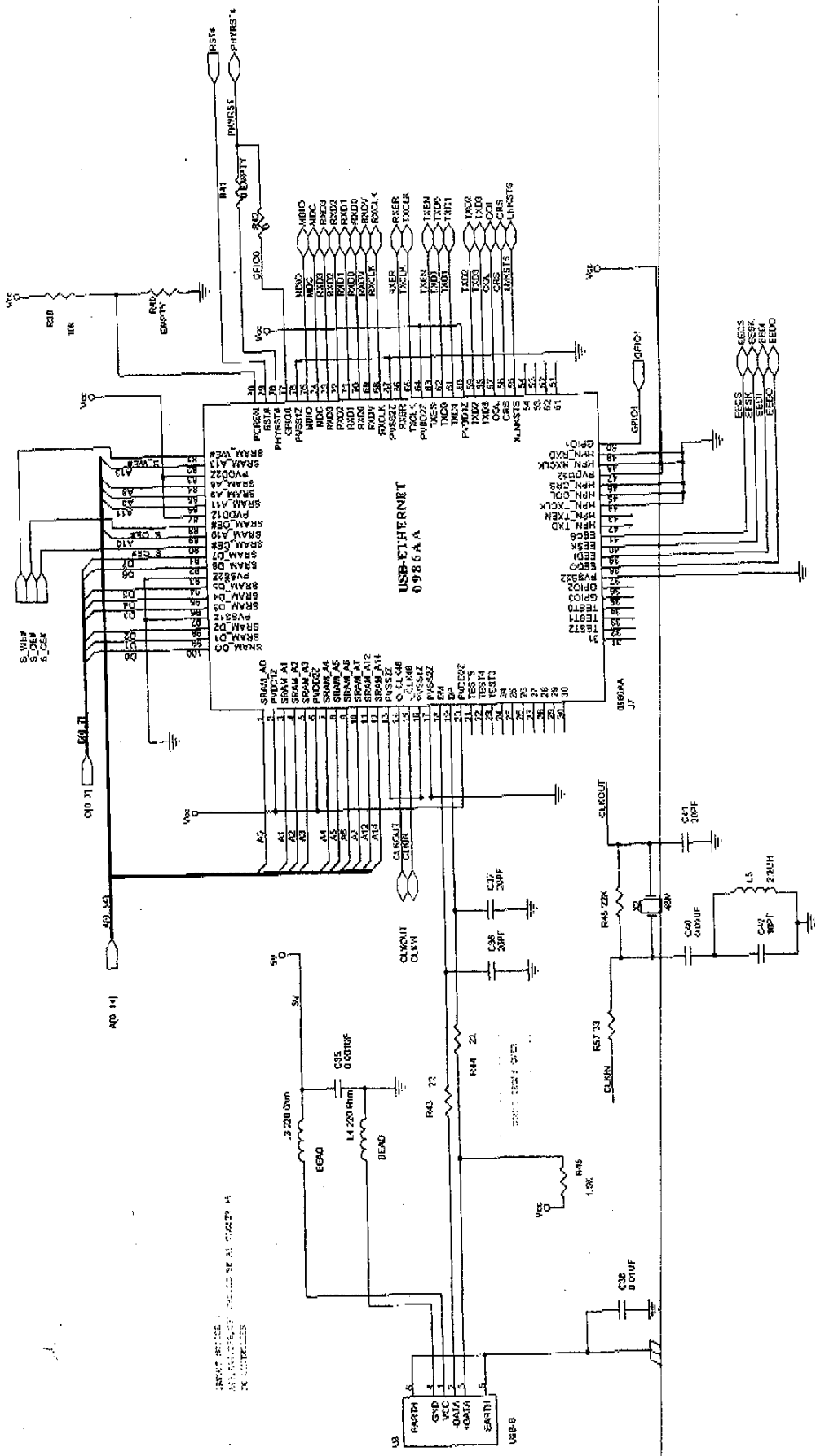


SP484

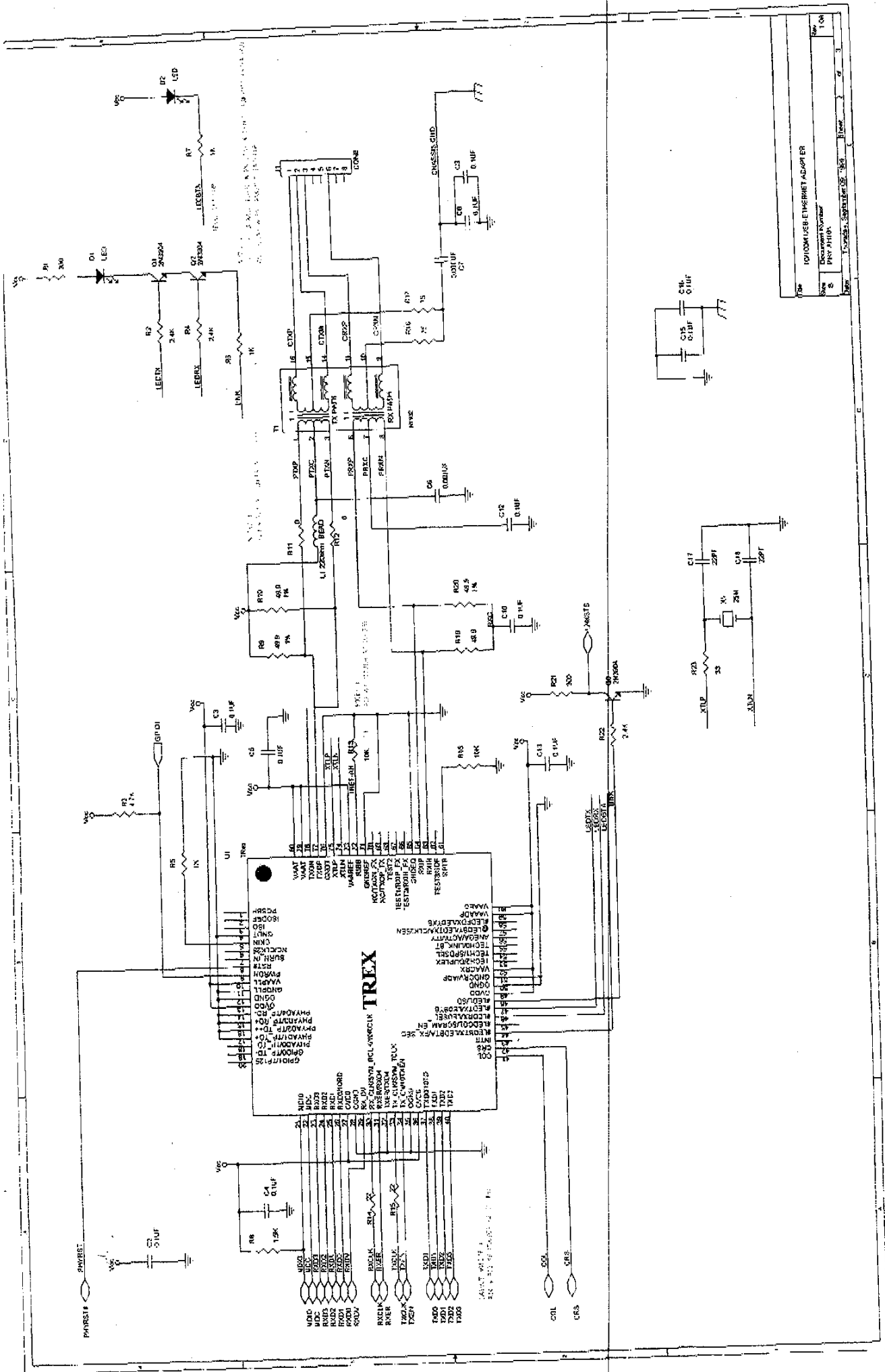


Title	10/100M USB ETHERNET ADAPTER
Document Number	SP484 - EEPROM - Reset Cell Request
Size	B
Date	Thursday, September 09, 1999
Sheet	3 of 3
Rev	1.00

Proj	1910000 USB ETHERNET ADAPTER		
Size	Schematic Drawing		
Date	Thursday, September 09, 1999	Sheet	3



INPUT SIGNALS SHOULD BE AS INDICATED IN CONNECTIONS TO CONTROLLER



Doc	10100M USB EMBEDDED ADAPTER
Rev	1.00
Doc	Doc Number
Rev	Rev Number
Doc	Doc Name
Rev	Rev Name

