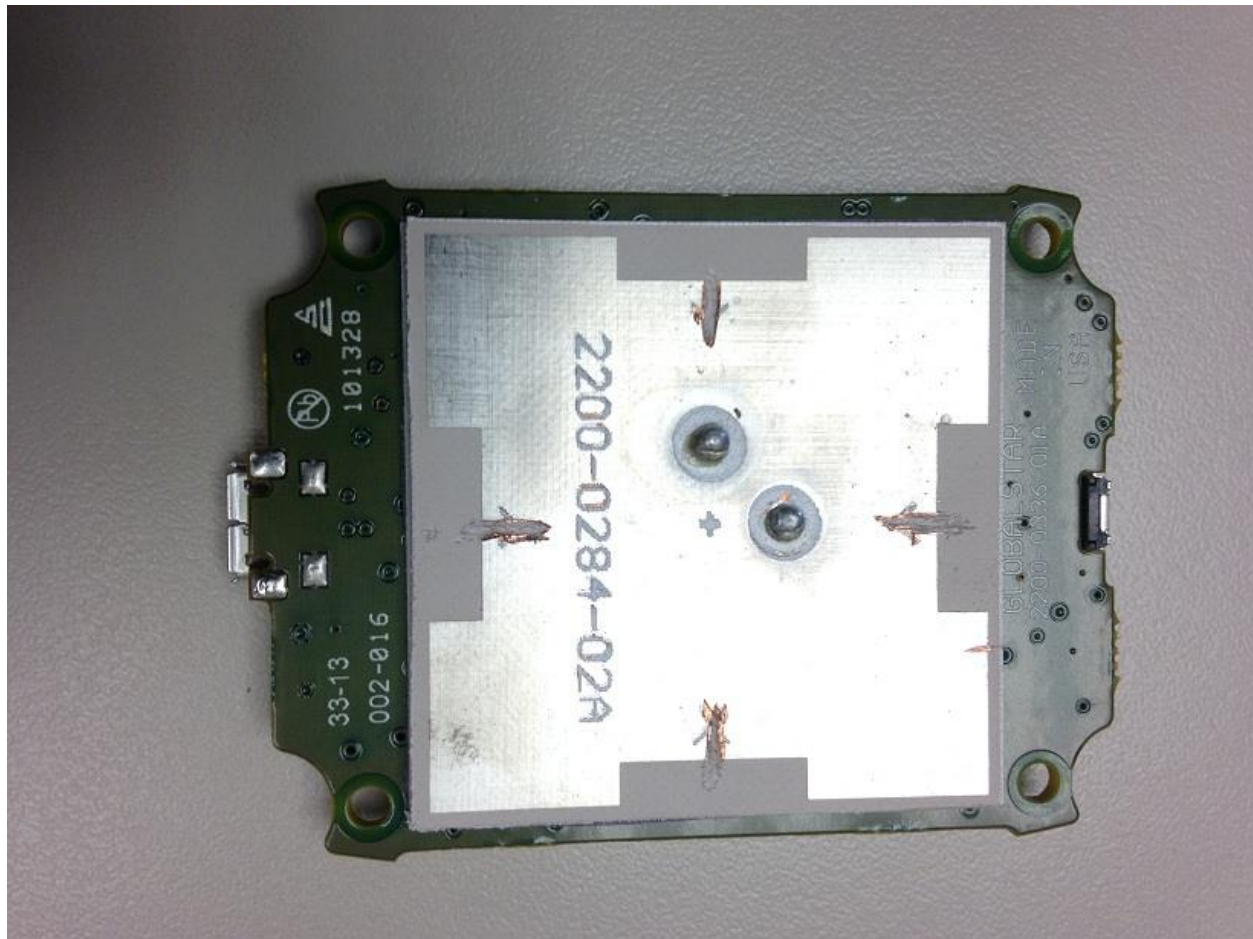
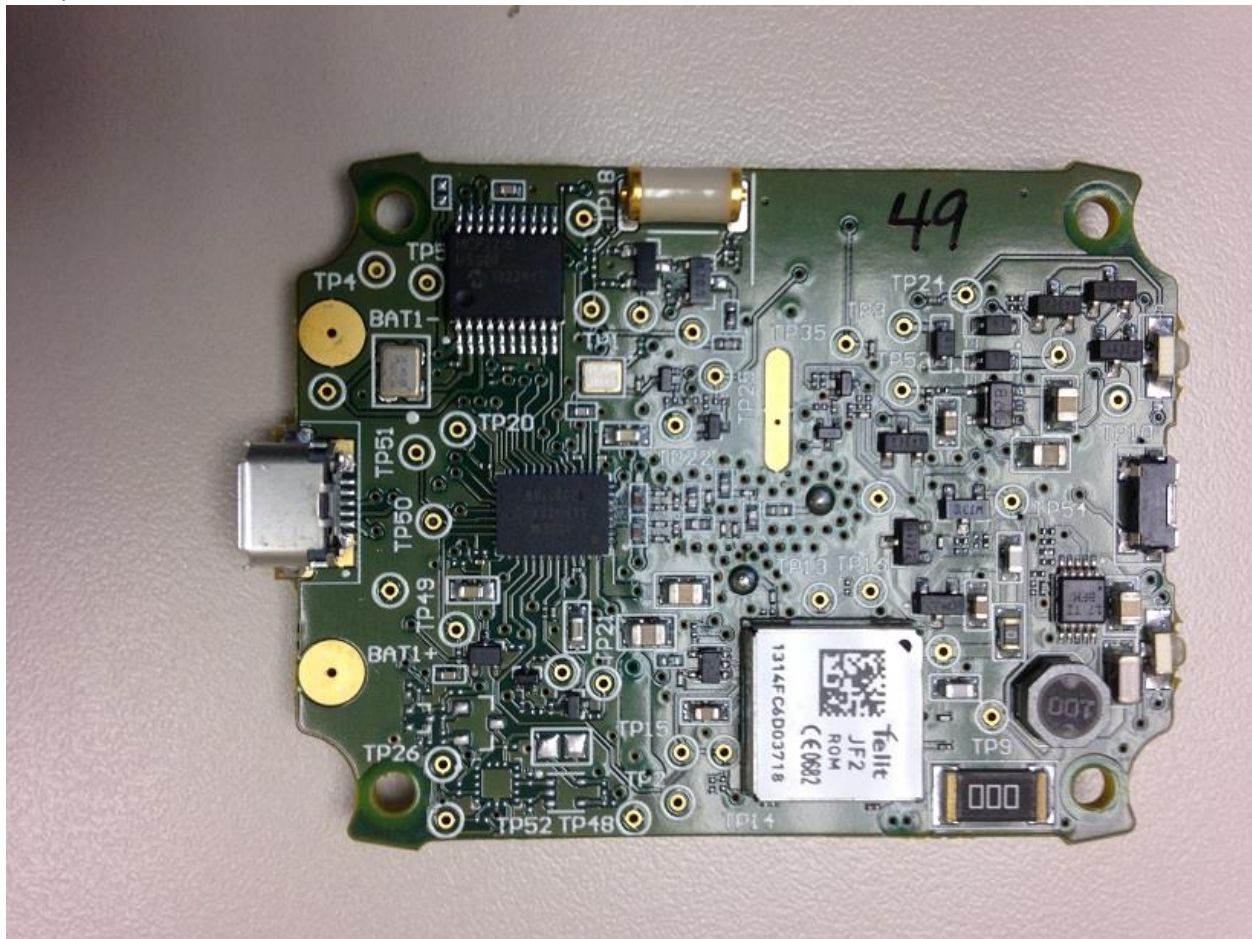


Antenna Side of PCB – SPOT TRACE



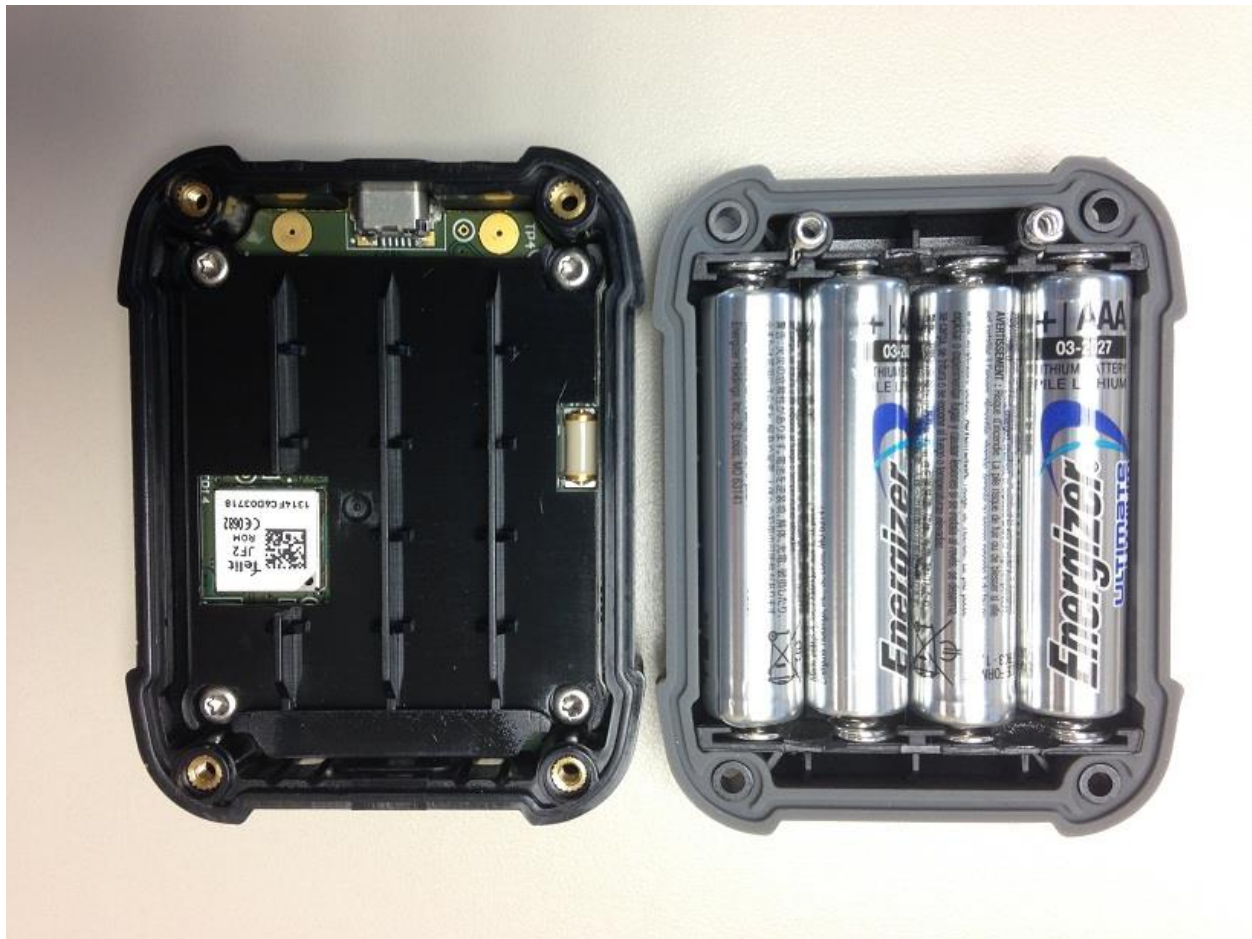
Component Side of PCB – SPOT TRACE



External Bottom View

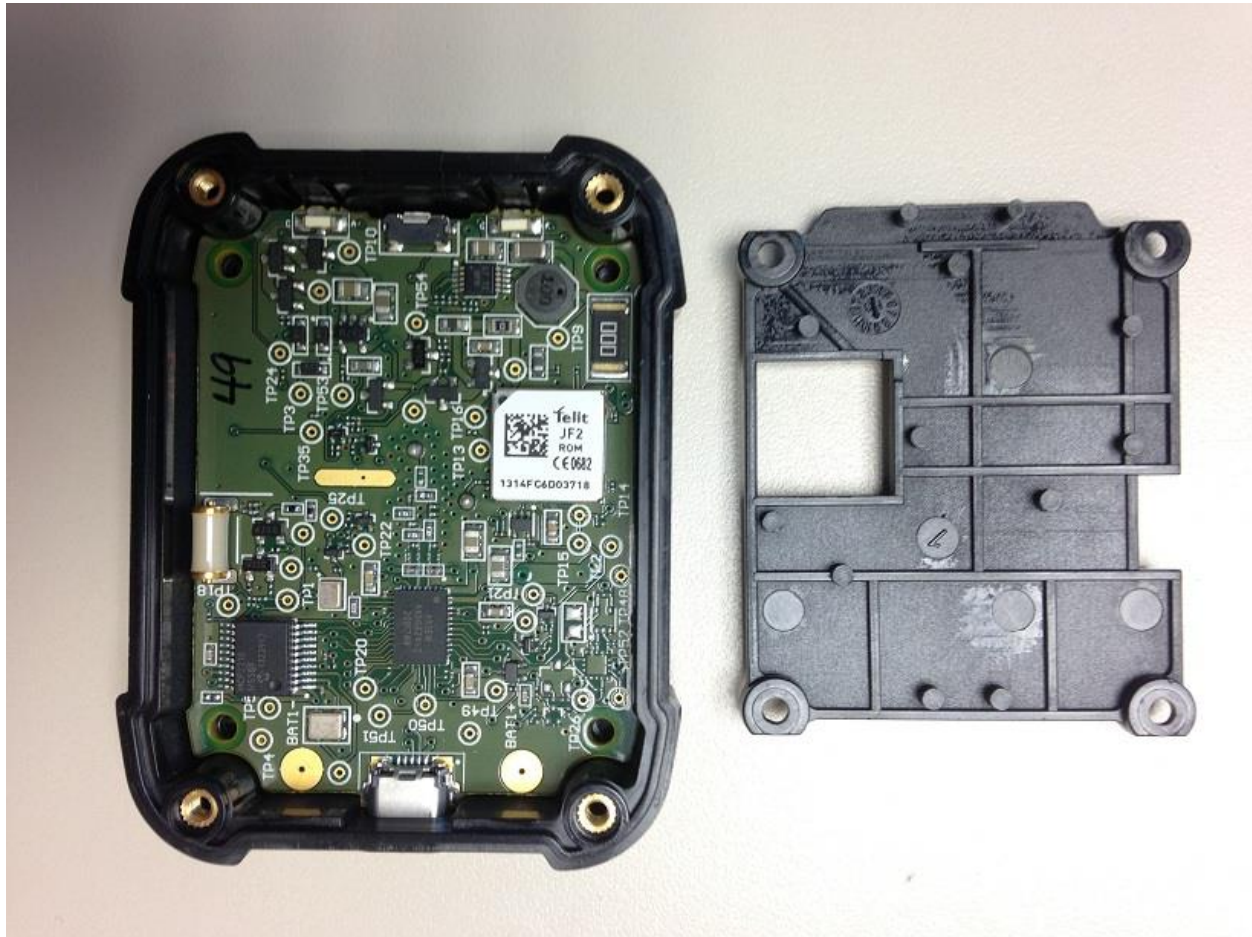


Internal View – Bottom Housing & Top Housing with Battery Wall Installed – SPOT TRACE





Internal View of Top Housing with Battery Wall Removed – SPOT TRACE



Internal View Top Housing with PCB Removed & Facing Antenna Up – SPOT TRACE

