

# INTERNAL PHOTOGRAPHS

## PHOTOS OF THE TESTED EUT

The following photos are attached:

- Photo 2. Top of EUT, Cover Open
- Photo 3. Top of EUT, Cover Removed
- Photo 4. Bottom of EUT, Cover Removed
- Photo 6. Top of Battery Compartment, Cover Removed
- Photo 7. Bottom of Battery Compartment, Cover Removed
- Photo 8. STX2 Module
- Photo 9. GPS Receiver Module
- Photo 10. 2.4 GHz Transmitter Section

Photo 2. Top of EUT, Cover Open

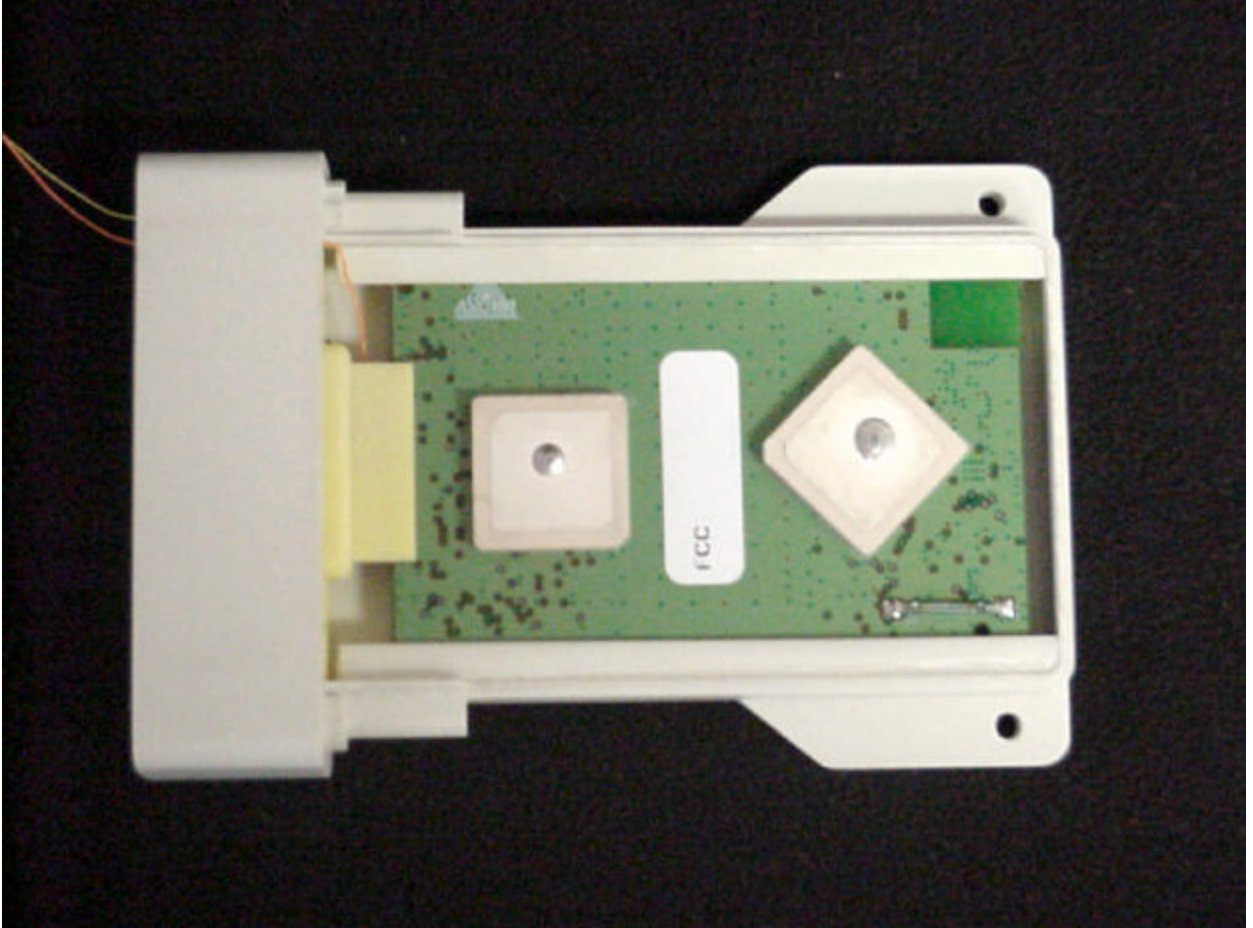


Photo 3. Top of EUT, Cover Removed

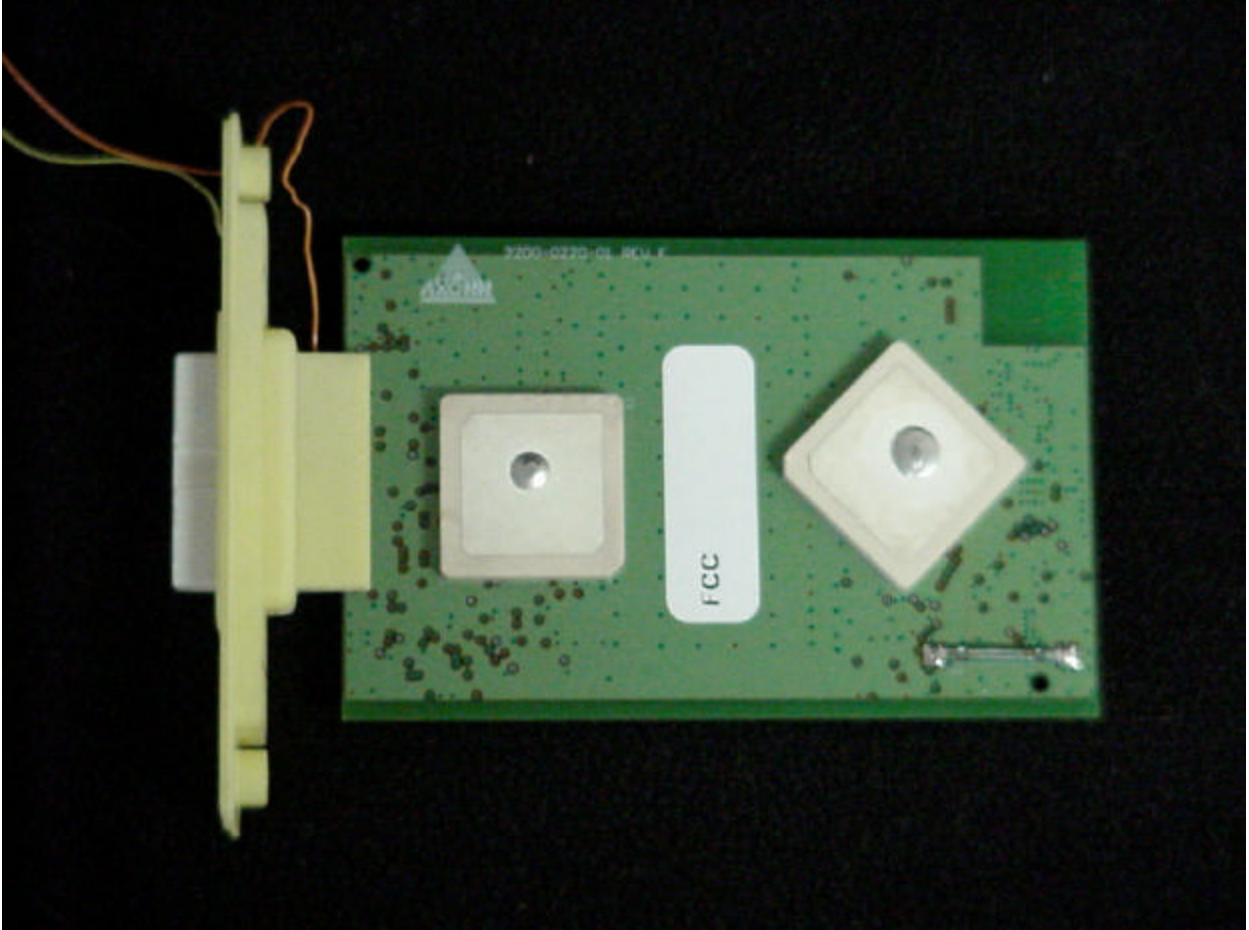


Photo 4. Bottom of EUT, Cover Removed

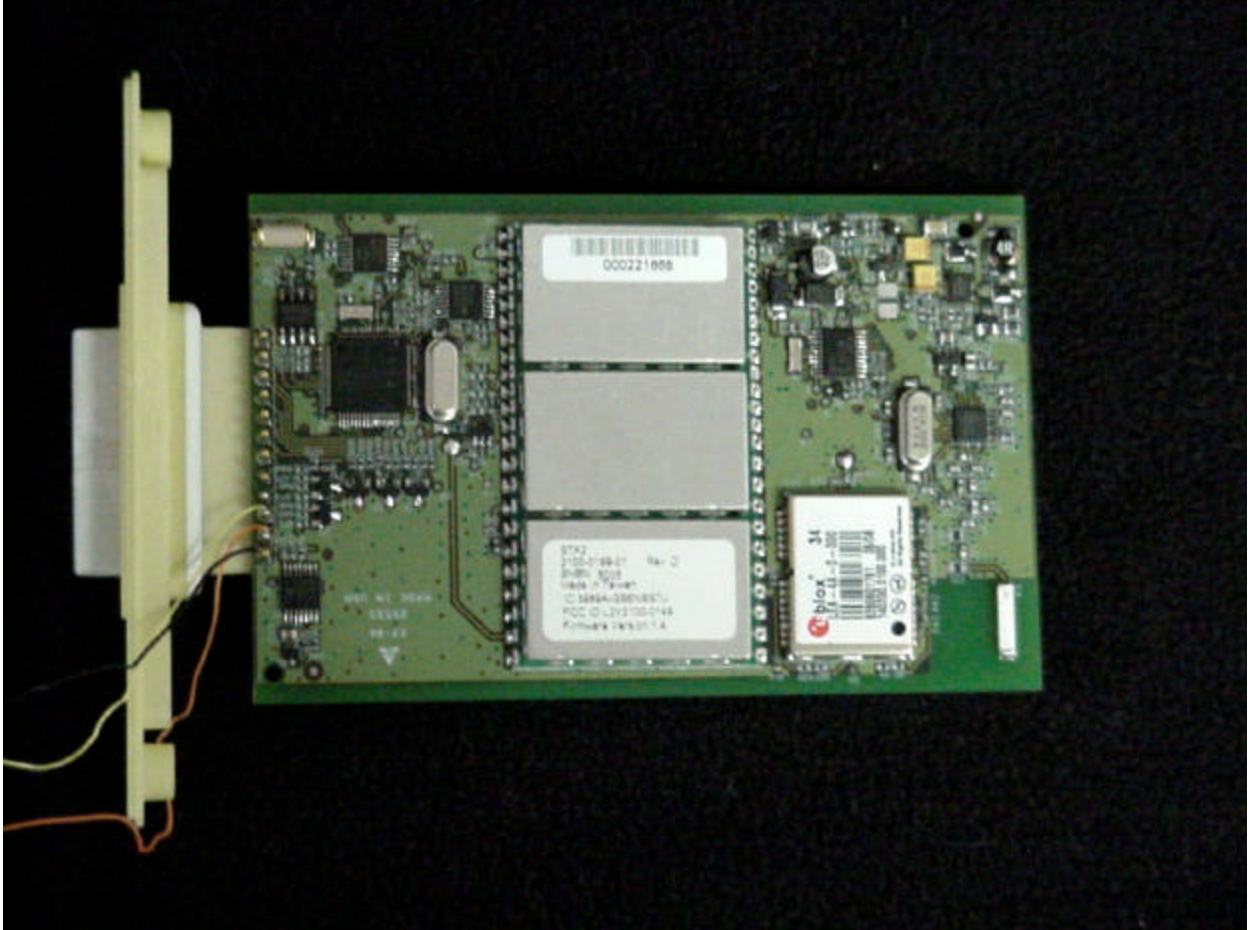


Photo 6. Top of Battery Compartment, Cover Removed

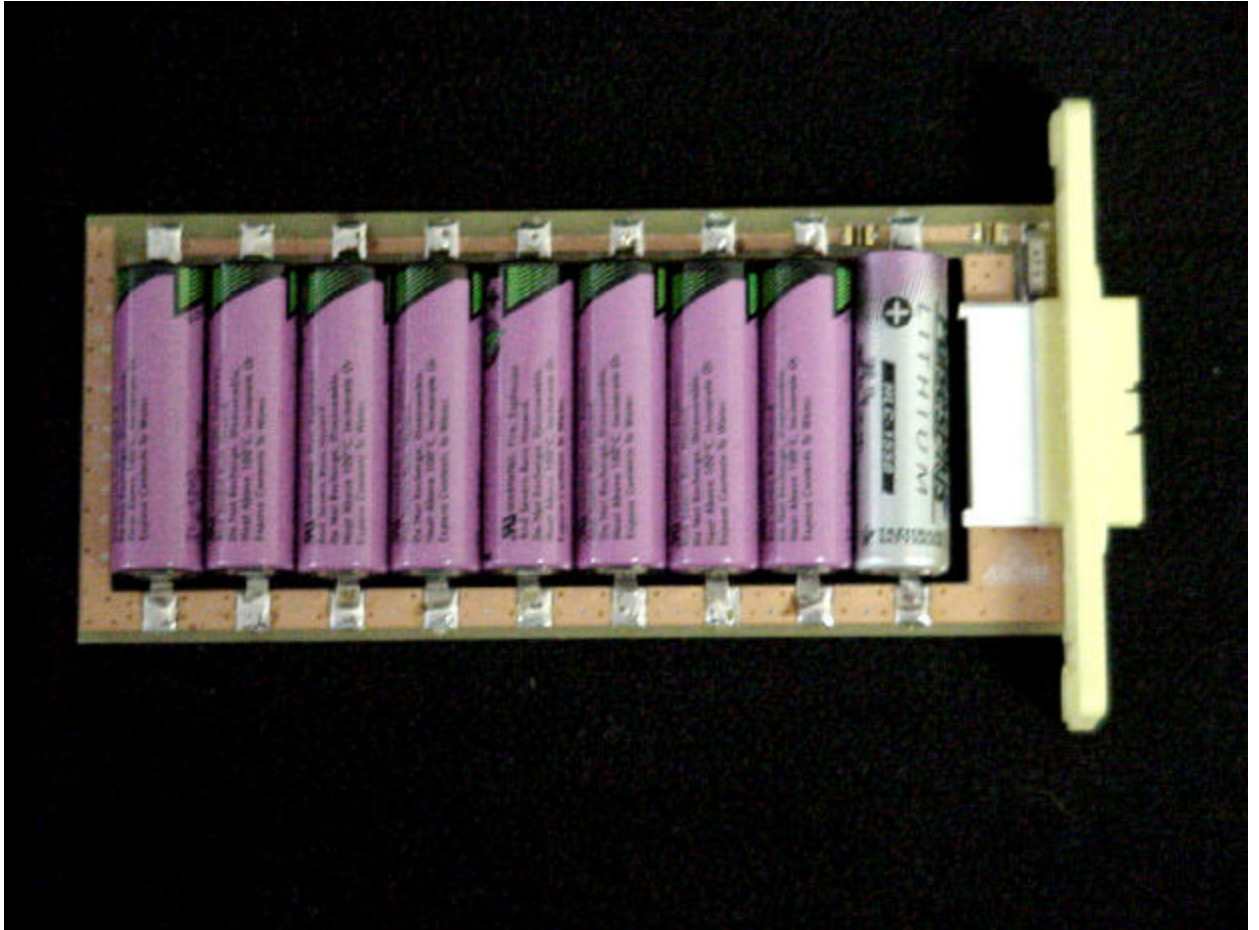


Photo 7. Bottom of Battery Compartment, Cover Removed



Photo 8. STX2 Module

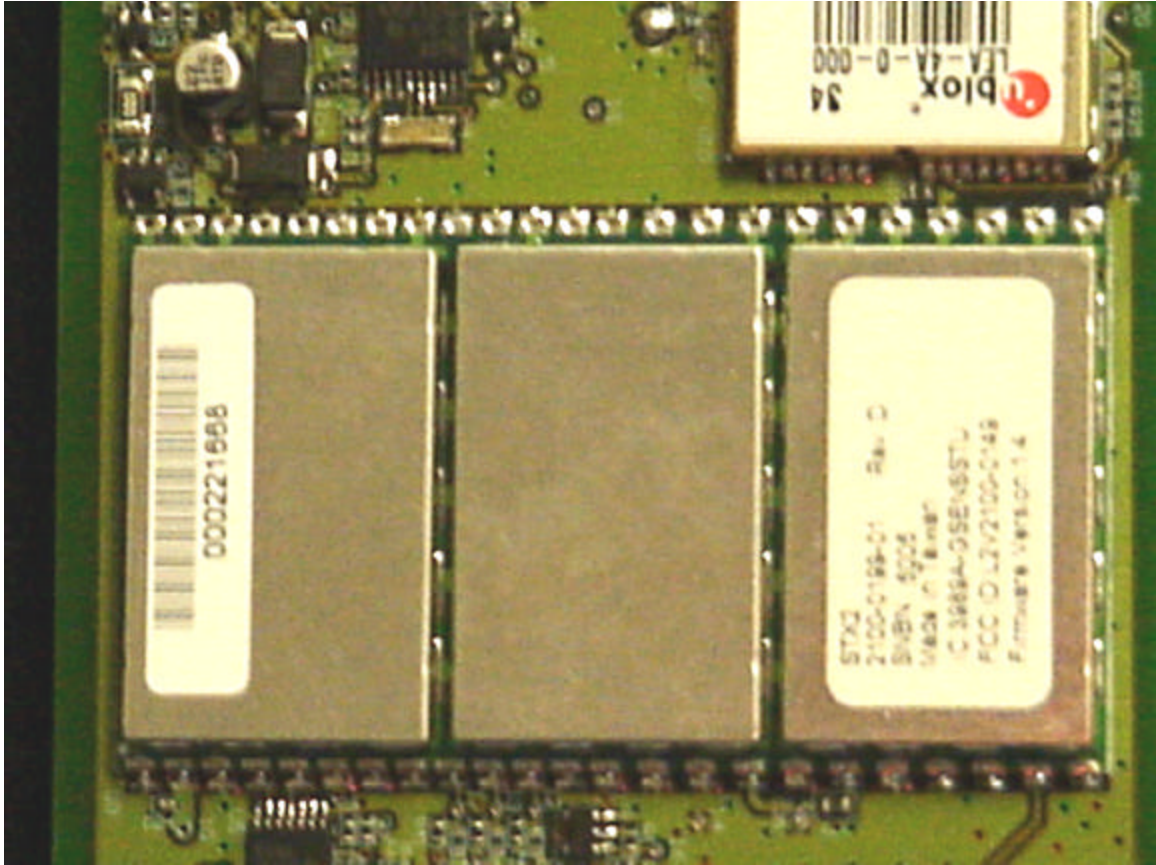




Photo 9. GPS Receiver Module

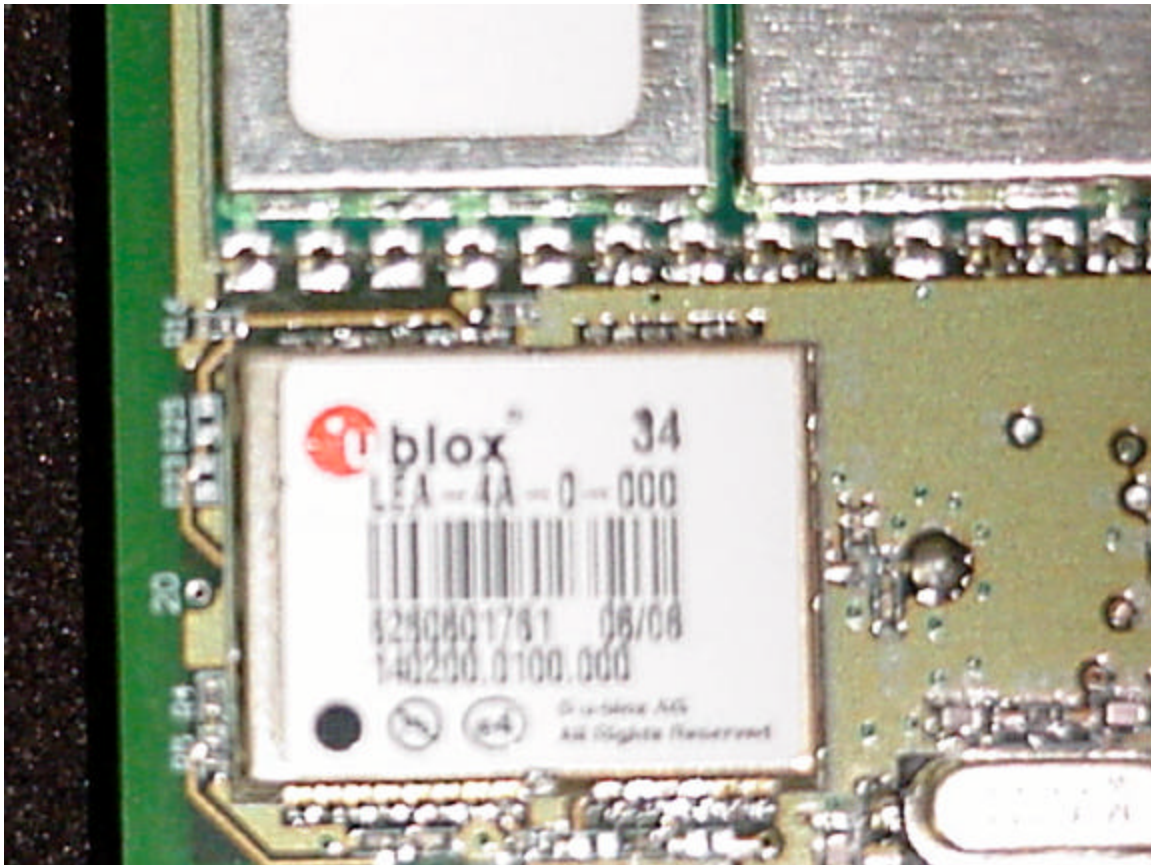
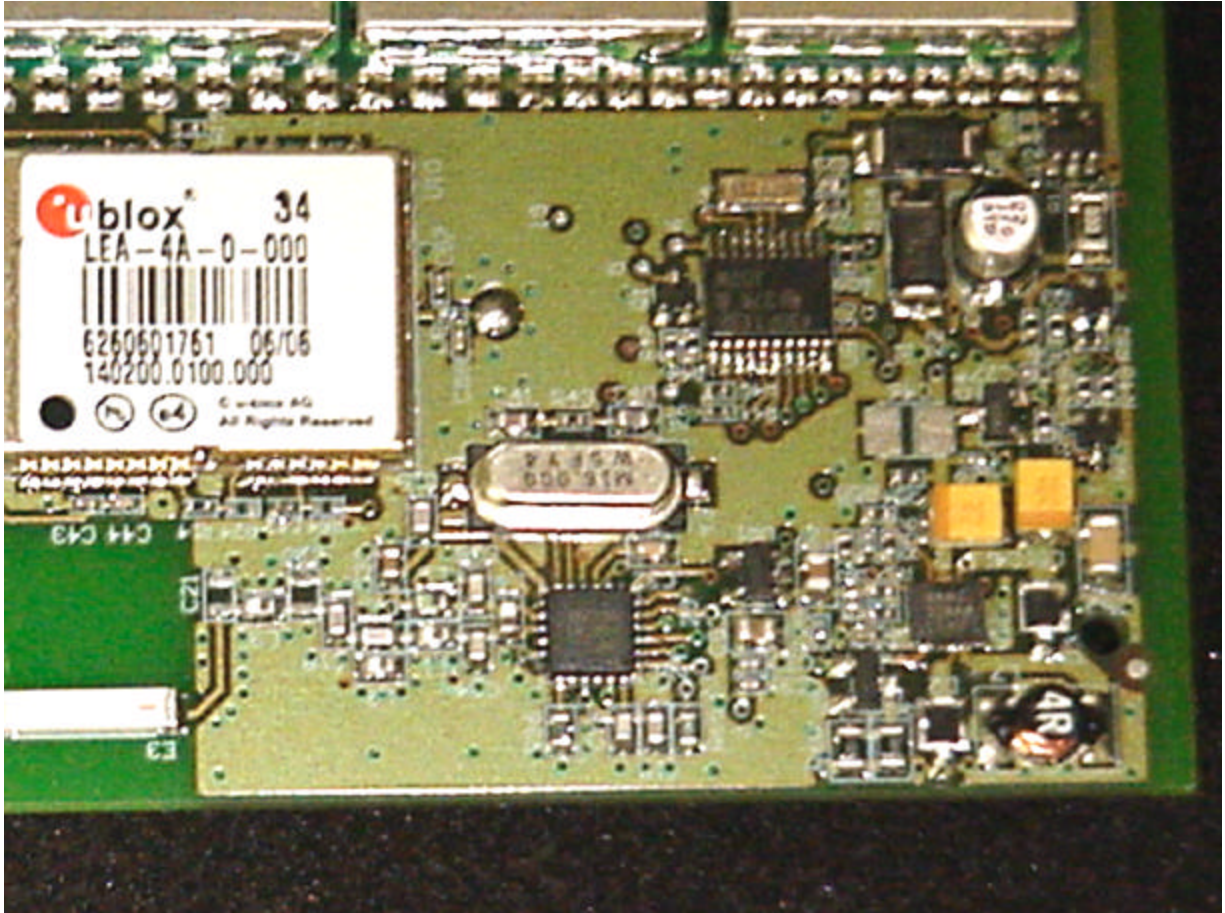


Photo 10. 2.4 GHz Transmitter Section



Antenna located Bottom Left Corner