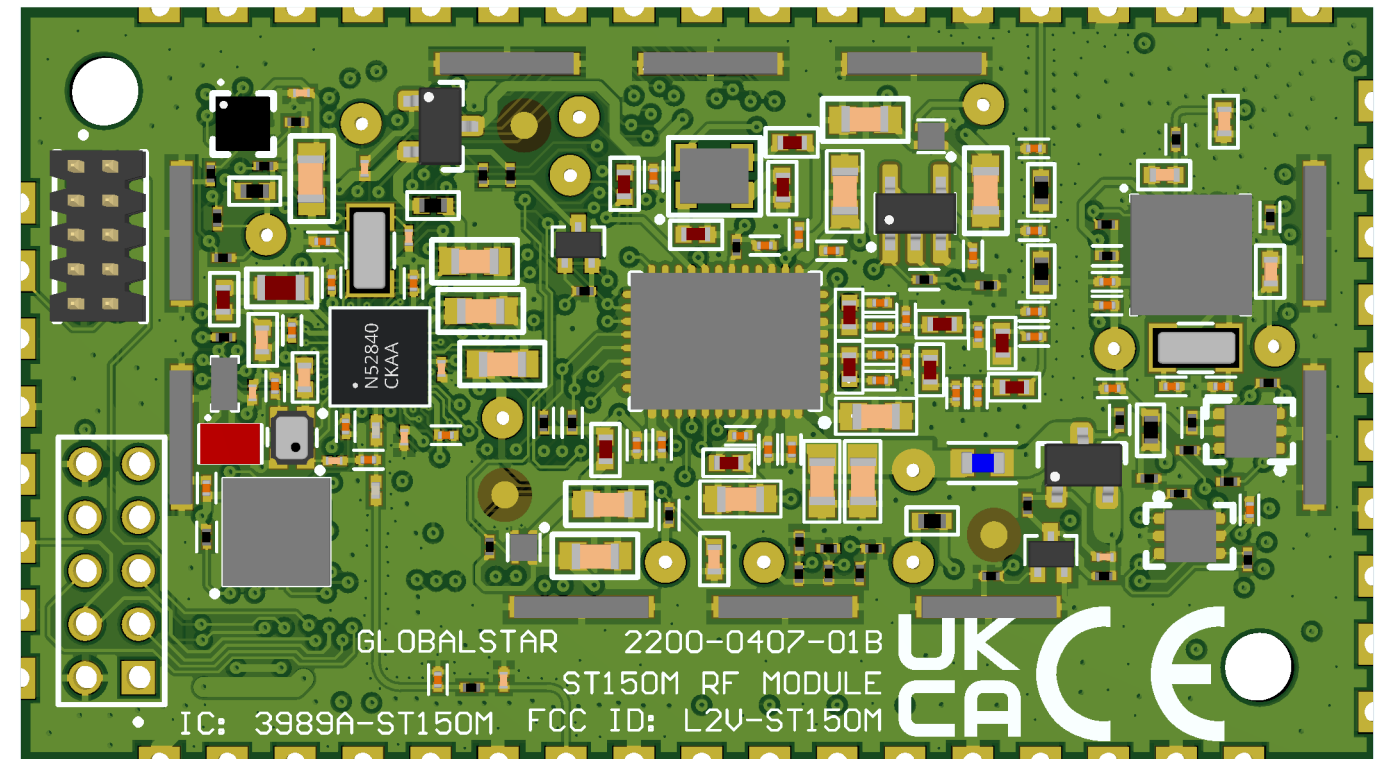
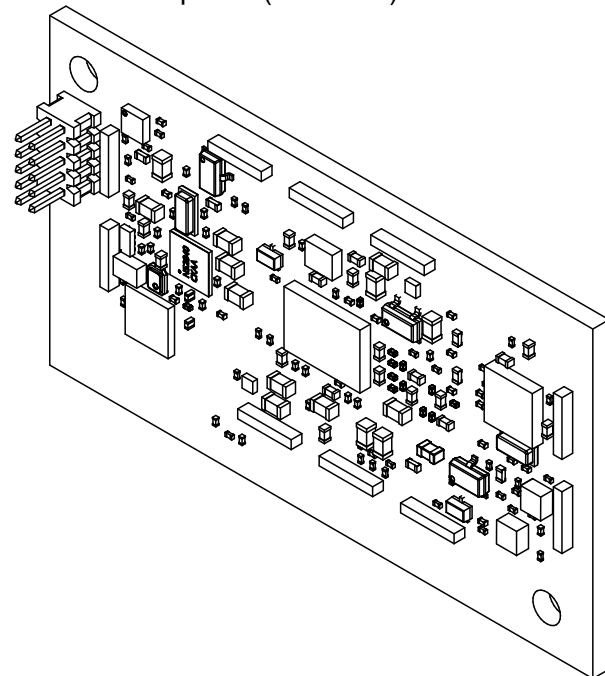


- 1) MOISTURE SENSITIVE COMPONENTS  
 ALL BGAS ARE MSL-3 UNLESS OTHERWISE SPECIFIED  
 BAKE ALL BGAS FROM UNOPENED PACKAGE WITH MOISTURE INDICATOR CARDS PER J-STD-033B
- 2) QA STAMP  
 PLACE QA STAMPS IN THE DESIGNATED LOCATIONS
- 3) COMPONENT ORIENTATOIN  
 REVIEW APPLICABLE COMPONENTS FOR PIN-1 CORRECT ORIENTATION  
 CONSULT GLOBALSTAR IF ORIENTATION IS NOT CLEAR
- 4) ALL PCB ASSEMBLIES SHALL BE IN COMPIJANCE WITH IPC-A-610E, OR CURRENT REV, PER TYPE 2, CLASS 2 PCB ASSEMBLIES. THE ASSEMBLY/PRODUCT SHOULD COMPLY WITH OTHER IPC REQUIREMENTS, SUCH AS IPC-7351, IPC-2220 (SERIES), IPC-6010 (SERIES), AND IPC-A-600.  
 CLASS 2 IS A DEDICATED SERVICE ELECTRONIC PRODUCT WHICH IS A PRODUCT WHERE CONTINUED PERFORMANCE AND EXTENDED LIFE IS REQUIRED, AND FOR WHICH UNINTERRUPTED SERVICE IS DESIRED BUT NOT CRITICAL
- 5) LEADED/LEADLESS DEVICES:  
 ACCEPTABLE -CLASS 1, 2, 3  
 : CHIPS OR SCRATCHES THAT DO NOT EXPOSE THE COMPONENT SUBRSTRATE OR ACTIUE ELEMENTS OR AFF ECT STRUCTUAL INTEGRITY, FORM, FIT OR FUNCTION.  
 : CHIPS OR SCRATCHES IN COMPONENT MENISCUS THAT DO NOT EXPOSE THE COMPONENT SUBSTRATE OR ACTIUE ELEMENTS, OR AFFECT STRUCTUAL INTEGRITY, FORM, FIT, OR FUNCTION.  
 : STRUCTIAL INTEGRITY IS NOT COMPROMISED.  
 : NO EUIDENCE OF CRACKS OR DAMAGE TO THE LID OR LEAD SEALS OF A COMPONENT.  
 : DENTS, SCRATCHES DO NOT AFFECT FORM, FIT a FUNCTION AND DO NOT EXCEED MANUFACTURER'S SPECIFICIATIONS.  
 : NO BURNED, CHARRED COMPONENTS.
- 6) FLUX RESIDUES:  
 ACCEPTABLE -CLASS 1, 2, 3  
 : NO DISCERNIBLE RESIDUE FROM CLEANABLE FLUXES IS ALLOWED.  
 : FLUX RESIDUES FROM NO-CLEAN PROCESSES MAY BE ALLOWED.  
 : FLUX RESIDUE DOES NOT INHIBIT UISUAL INSPECTION.  
 : FLUX RESIDUE DOES NOT INHIBIT ACCESS TO TEST POINTS OR THE ASSEMBLY.
- 7) COMPONENT MOUNTING HORIZONTAL AXIAL:  
 ACCEPTABLE -CLASS 1, 2, 3  
 : POLARIZED AND MULTI LEAD COMPONENTS ARE ORIENTED CORRECTLY.  
 : WHEN HAND FORMED AND HAND-INSERTED, POLARIZATION SYMBOLS ARE DISCERNIBLE.  
 : ALL COMPONENTS ARE AS SPECIFIED AND TERMINATE TO CORRECT LANDS.  
 : NONPOLARIZED COMPONENTS ARE NOT ORIENTED SO THAT MARKINGS ALL READ THE SAME WAY (LEFT-TO-RIGHT OR TOP-TO-BOTTOM).
- 8) COMPONENT MOUNTING VERTICAL, AXIAL.:  
 ACCEPTABLE -CLASS 1, 2, 3  
 : POLARIZED PART IS MOUNTED WITH LONG GROUND LEAD.  
 : POLARIZED MARKING IS HIDDEN  
 : NONPOLARIZED COMPONENT MARKINGS READ FROM BOTTOM TO TOP.

Realistic View



View from Top side (Scale 2:1)



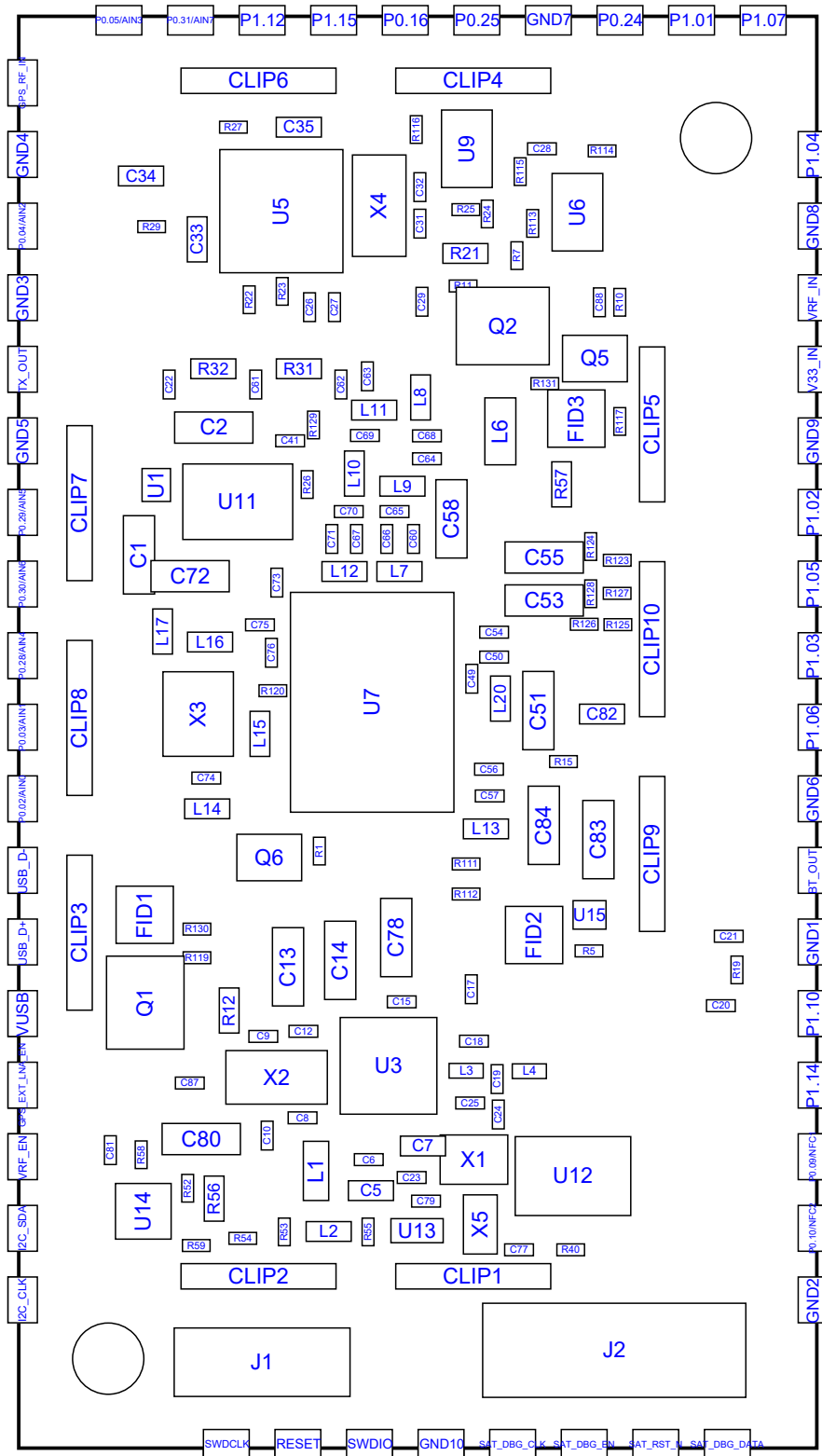
**CONFIDENTIAL:**  
 THE INFORMATION CONTAINED IN THIS DRAWING IS THE SOLE PROPERTY OF GLOBALSTAR, INC. ANY REPRODUCTION IN PART OR AS A WHOLE WITHOUT THE WRITTEN PERMISSION OF GLOBALSTAR, INC IS PROHIBITED.

REV	ECO	DATE	ENGR	UNLESS OTHERWISE SPECIFIED:	NAME	DATE
X1	1741	2/1/21	JM	DIMENSIONS ARE IN INCHES TOLERANCES: FRACTIONAL± ANGULAR: MACH± BEND ± TWO PLACE DECIMAL ± THREE PLACE DECIMAL ±	DRAWN CHECKED ENG APPR. MFG APPR. Q.A. COMMENTS:	3/15/2022
X2	1799	6/1/21	JM			
A1	1873	10/19/21	JM	INTERPRET GEOMETRIC TOLERANCING PER:		
B1	TBD	TBD	KM	MATERIAL		
				FINISH		
				DO NOT SCALE DRAWING		

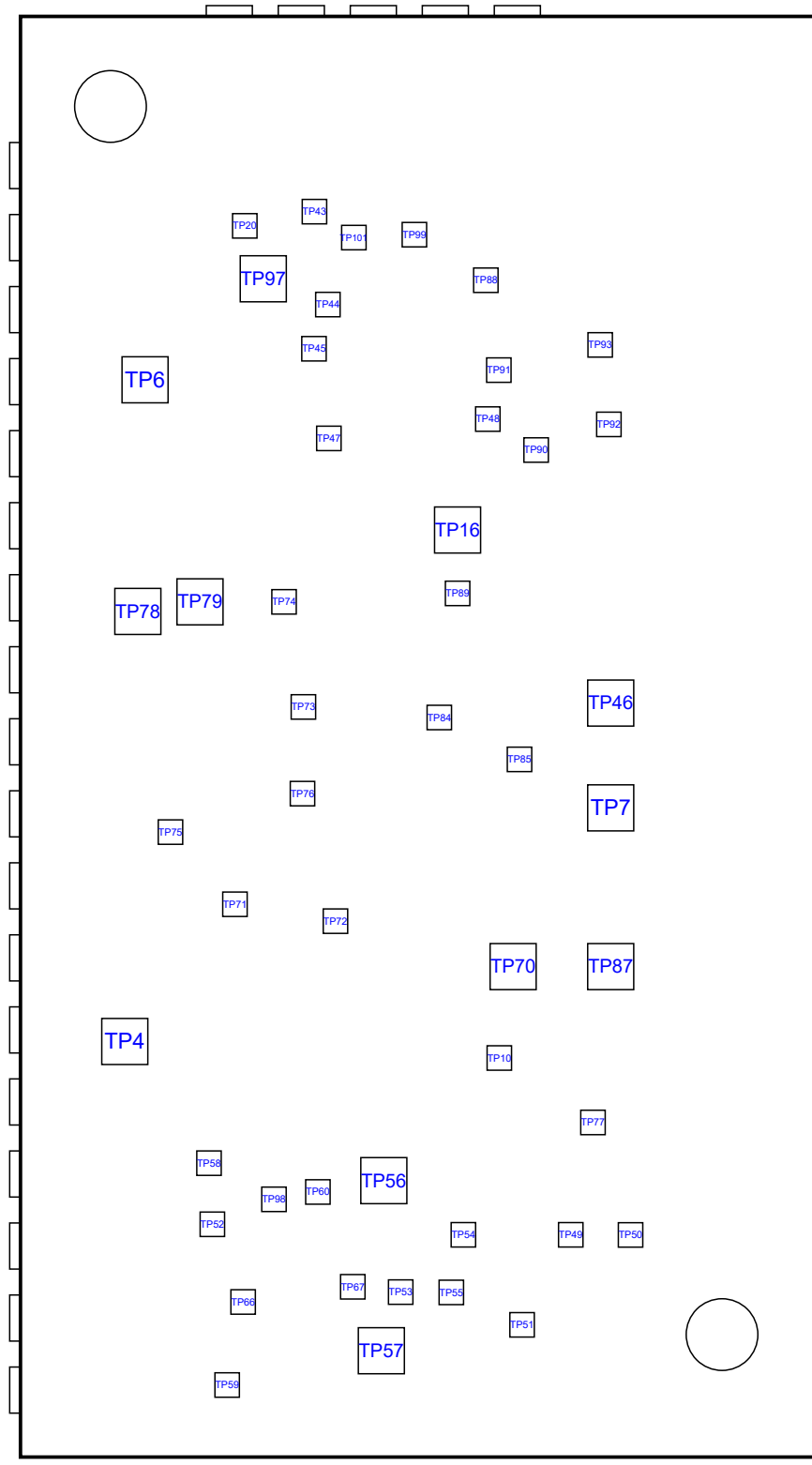
  


 1351 Holiday Square BLVD Covington, LA 70433		
TITLE ASSY, ST150M RF MODULE		
SIZE <b>B</b>	DWG. NO. 2200-0407-01	A1
SCALE: 1:1	WEIGHT:	SHEET 1 OF 4

View from Top side (Scale 4:1)

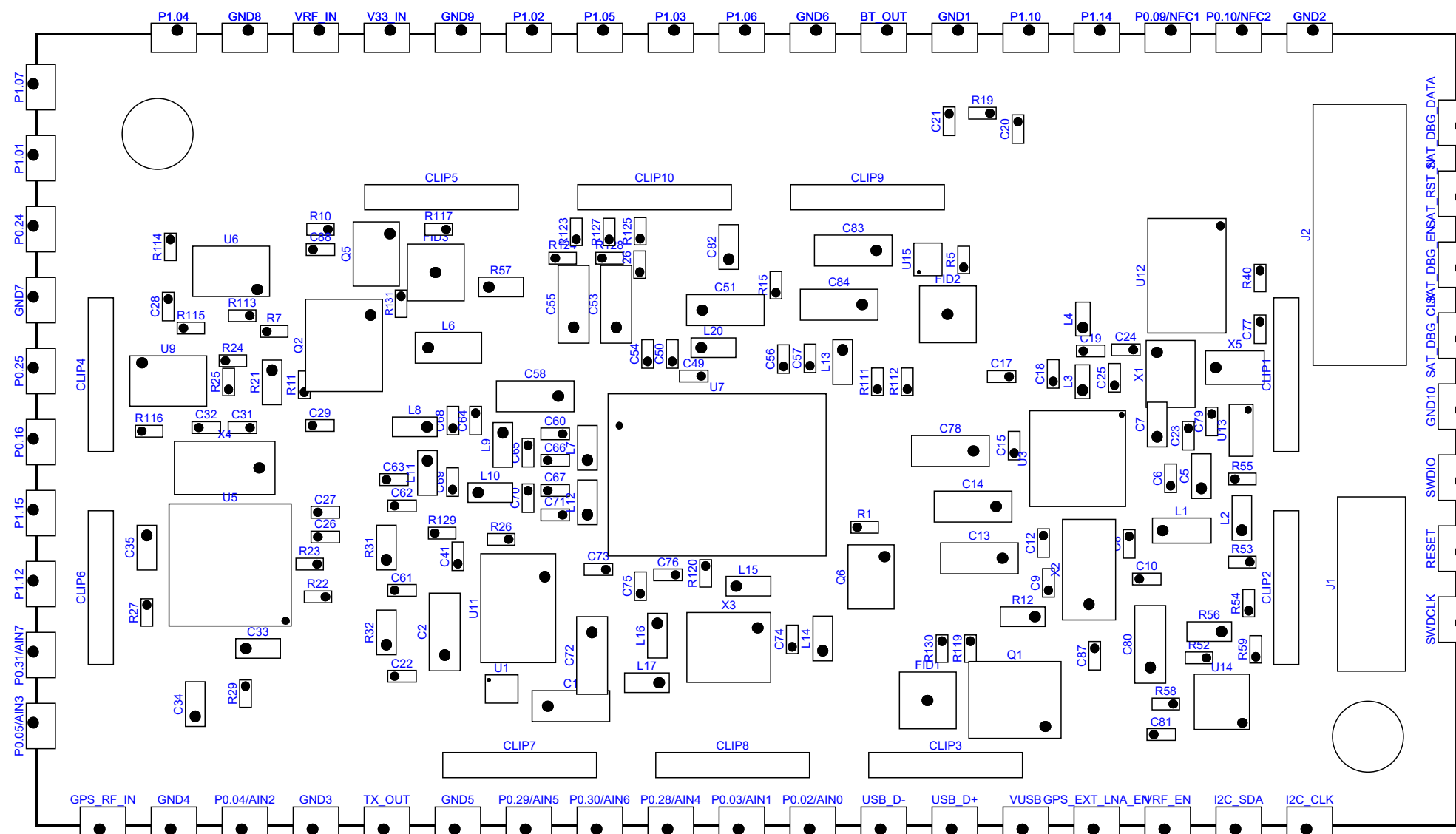



View from Bottom side (Scale 4:1)



 1351 Holiday Square BLVD Covington, LA 70433		
TITLE		
ASSY, ST150M RF MODULE		
SIZE	DWG. NO.	A1
<b>B</b>	2200-0407-01	
SCALE: 1:1	WEIGHT:	SHEET 2 OF 4

COMPONENT ORIENTATION (SCALE 5:1)



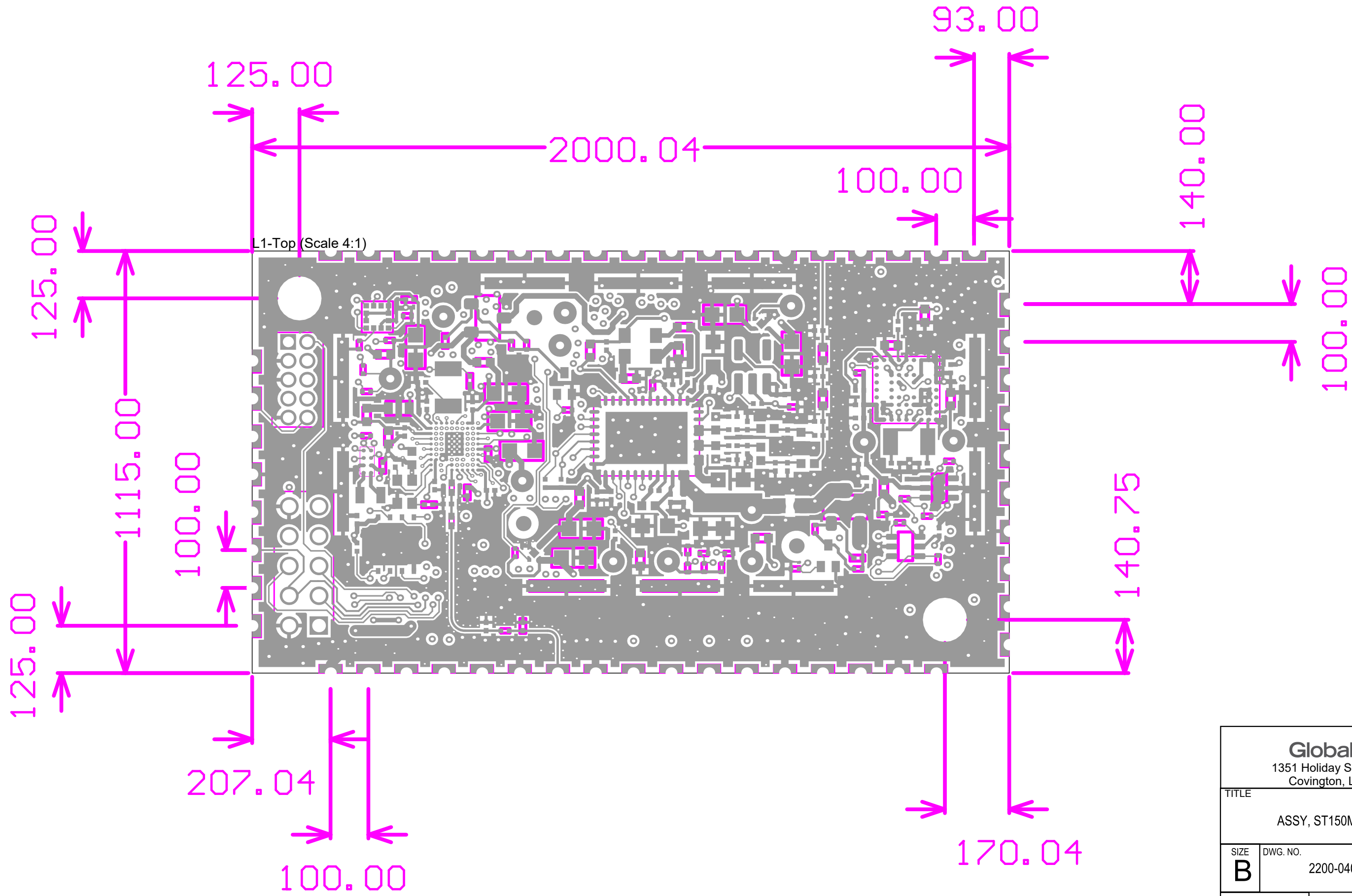
 1351 Holiday Square BLVD Covington, LA 70433		
TITLE		
ASSY, ST150M RF MODULE		
SIZE	DWG. NO.	A1
<b>B</b>	2200-0407-01	
SCALE: 1:1	WEIGHT:	SHEET 3 OF 4


A

B

C

D



 1351 Holiday Square BLVD Covington, LA 70433		
TITLE		
ASSY, ST150M RF MODULE		
SIZE	DWG. NO.	A1
<b>B</b>	2200-0407-01	
SCALE:	1:1	WEIGHT: SHEET 4 OF 4

A

B

C

D