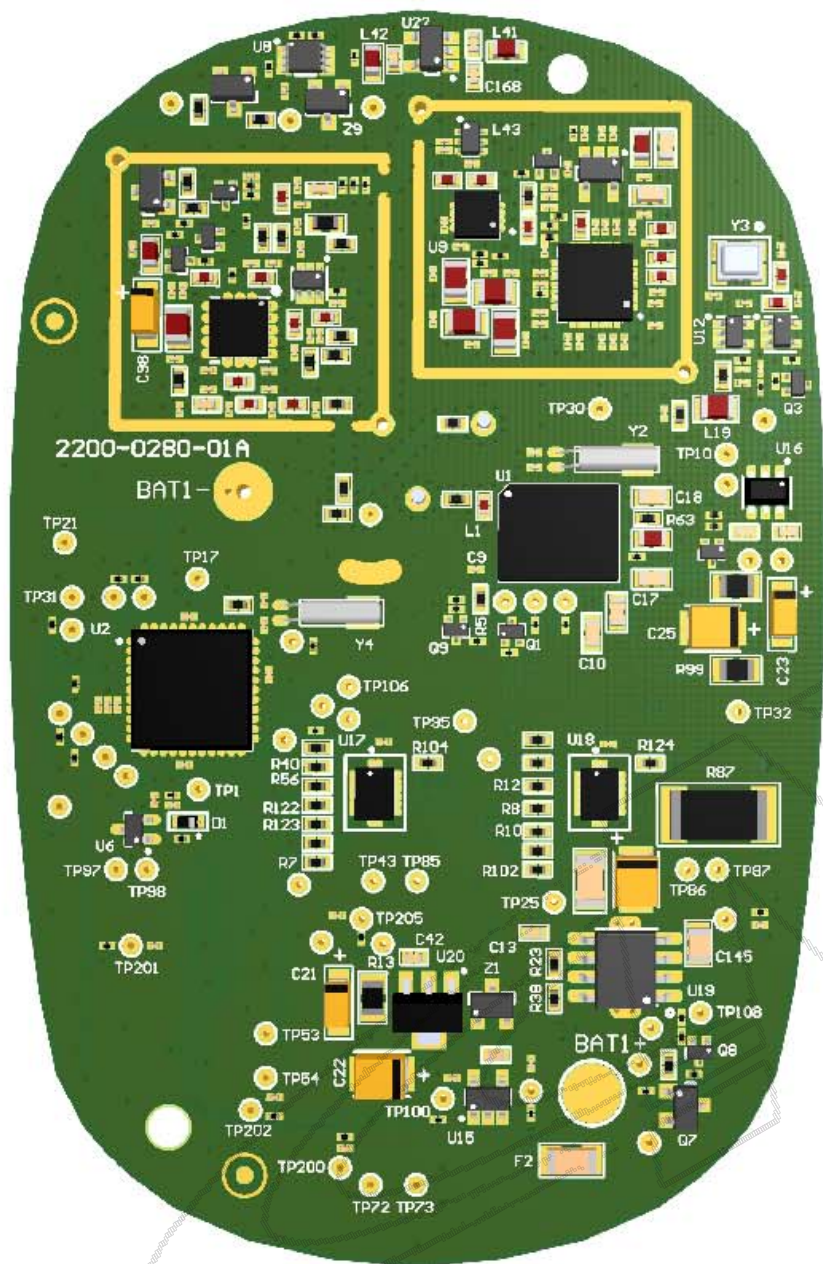


REV:	DESCRIPTION / ECN #:	ENGR 1:	ENGR 2:	DOC REL:	DATE:
A	INITIAL RELEASE			SCOTT HOJEM	07/09/09




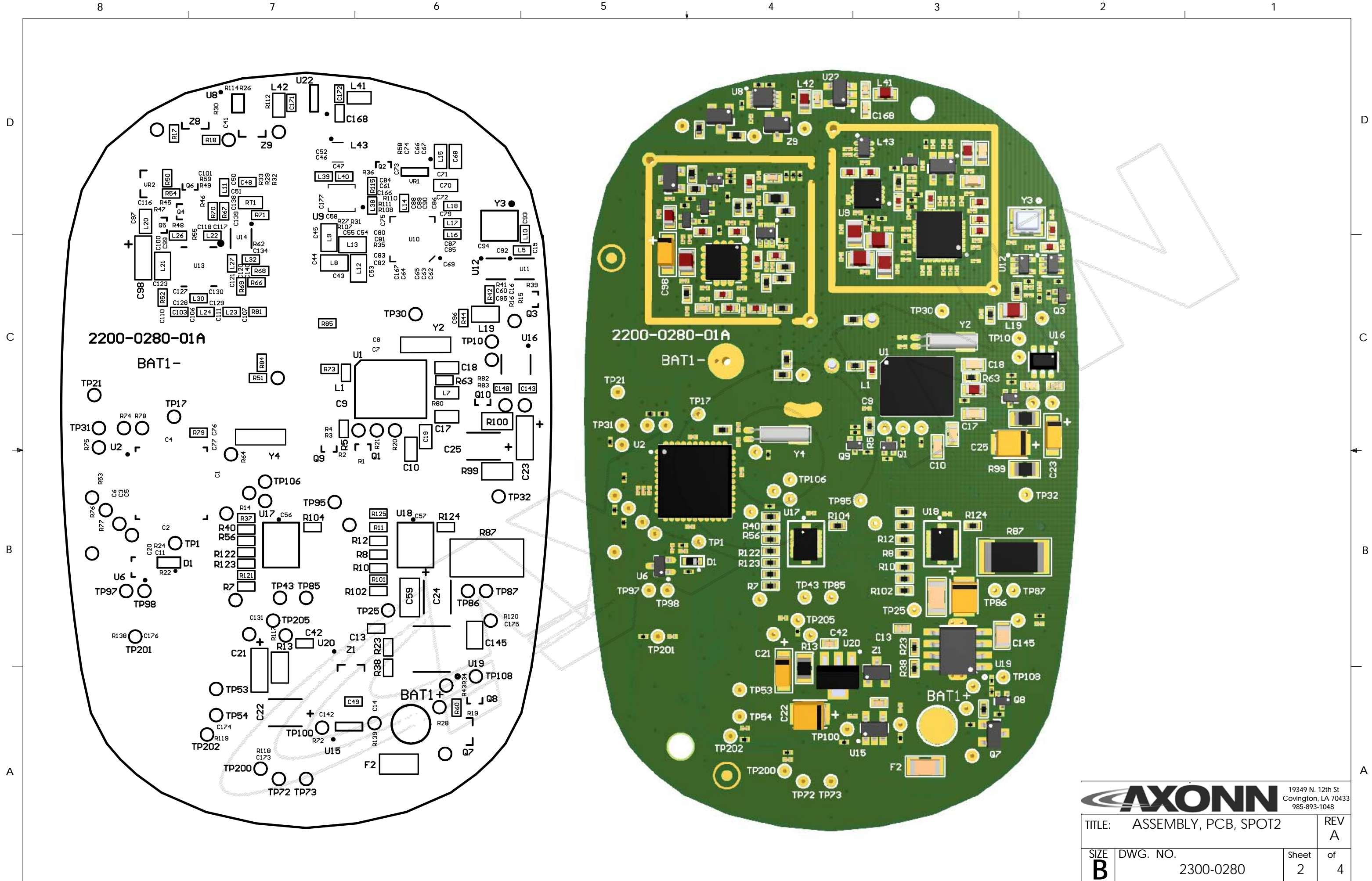
CONFIDENTIAL:

THE INFORMATION CONTAINED IN THIS DRAWING IS THE SOLE PROPERTY OF AXONN, LLC. ANY REPRODUCTION IN PART OR AS A WHOLE WITHOUT THE WRITTEN PERMISSION OF AXONN, LLC IS PROHIBITED.

UNLESS OTHERWISE SPECIFIED:

DIMENSIONS ARE IN INCHES
 TOLERANCES:
 FRACTIONAL ±
 ANGULAR: MACH ± BEND ±
 TWO PLACE DECIMAL ±
 THREE PLACE DECIMAL ±

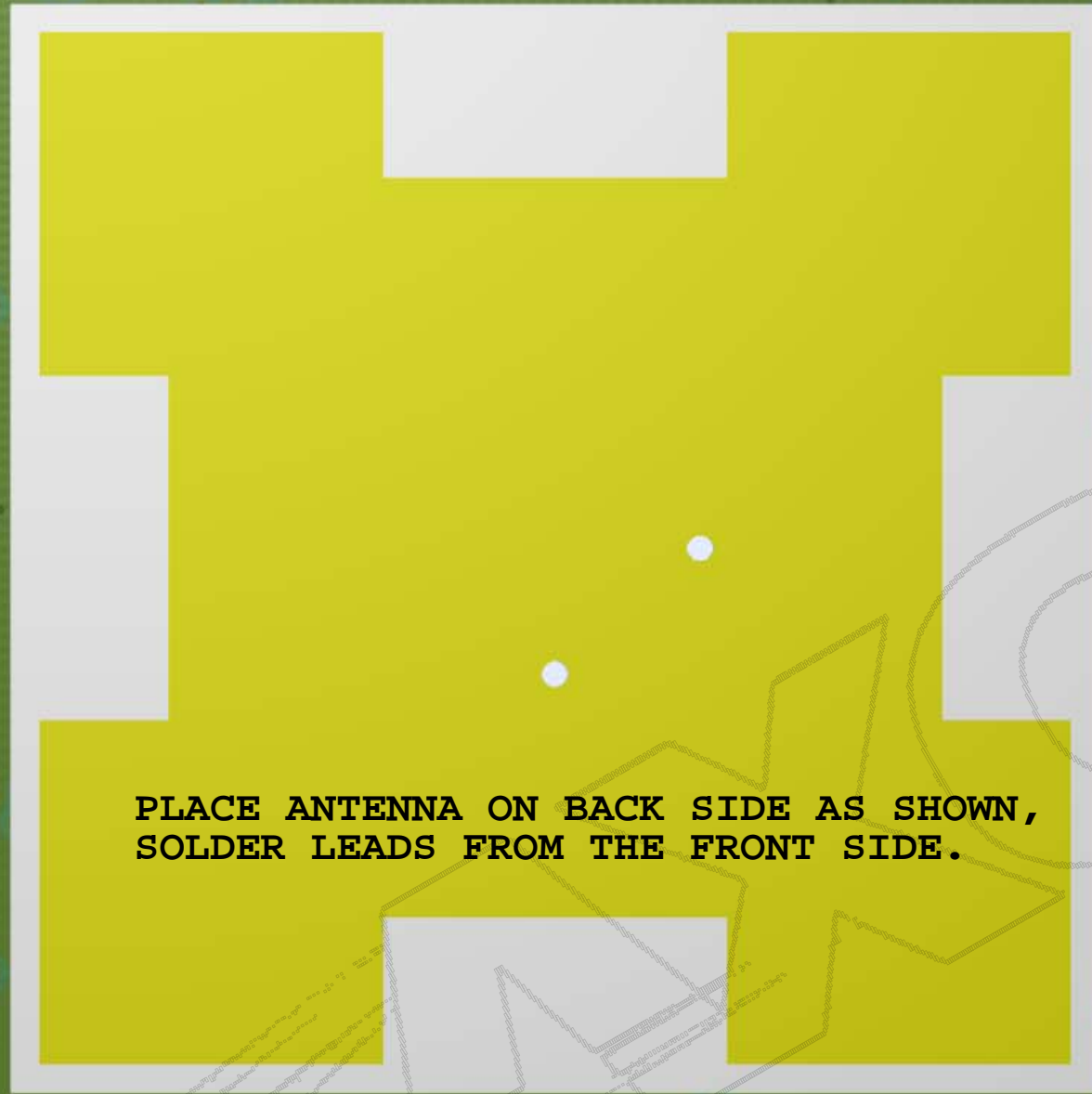
MATERIAL	Proj Engr: DAVE PETTIT	Date: 05/28/09	Drawn By: ROGER CASTRO	Date: 05/28/09	 19349 N. 12th St Covington, LA 70433 985-893-1048	TITLE: ASSEMBLY, PCB, SPOT2	REV A
FINISH	Engr 1: ERIC BLANCHARD	Date: 05/28/09	Prod Ctrl: C. MacKENZIE	Date: 05/28/09		SIZE B	DWG. NO. 2300-0280
	Engr 2:	Date:	Doc Ctrl: SCOTT HOJEM	Date: 05/28/09			



		19349 N. 12th St Covington, LA 70433 985-893-1048	
TITLE: ASSEMBLY, PCB, SPOT2			REV A
SIZE B	DWG. NO. 2300-0280	Sheet 2	of 4

8 7 6 5 4 3 2 1

MADE IN USA



PLACE ANTENNA ON BACK SIDE AS SHOWN,
SOLDER LEADS FROM THE FRONT SIDE.

E1



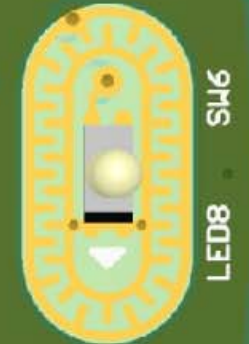
LED7 SW1



LED3 SW3



LED2 SW5



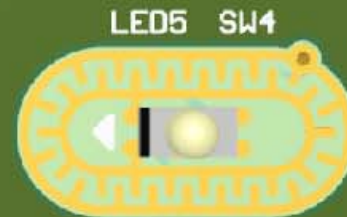
LED8 SW6



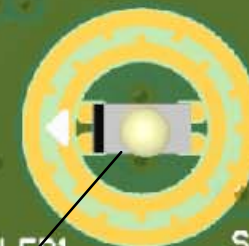
LED4



LED6



LED5 SW4



LED1 SW2

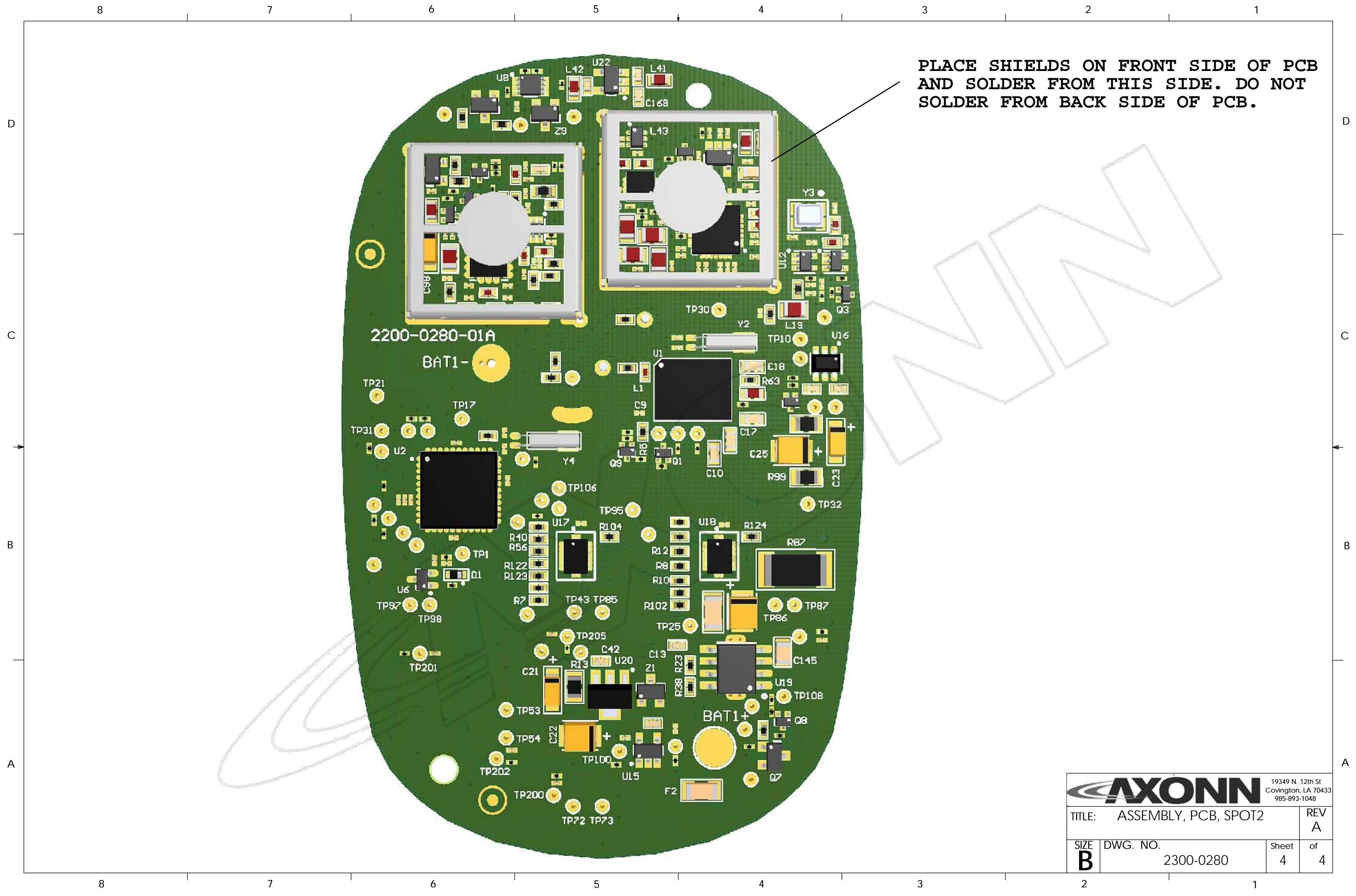
PLACE 8 LEDs AS SHOWN ON BACK OF PCB

		19349 N. 12th St Covington, LA 70433 985-893-1048	
TITLE: ASSEMBLY, PCB, SPOT2			REV A
SIZE B	DWG. NO. 2300-0280	Sheet 3	of 4

8 7 6 5 4 3 2 1

D
C
B
A

D
C
B
A



PLACE SHIELDS ON FRONT SIDE OF PCB
AND SOLDER FROM THIS SIDE. DO NOT
SOLDER FROM BACK SIDE OF PCB.

		19349 N. 12th St Covington, LA 70433 985-893-1048	
TITLE: ASSEMBLY, PCB, SPOT2			REV A
SIZE B	DWG. NO. 2300-0280	Sheet 4	of 4