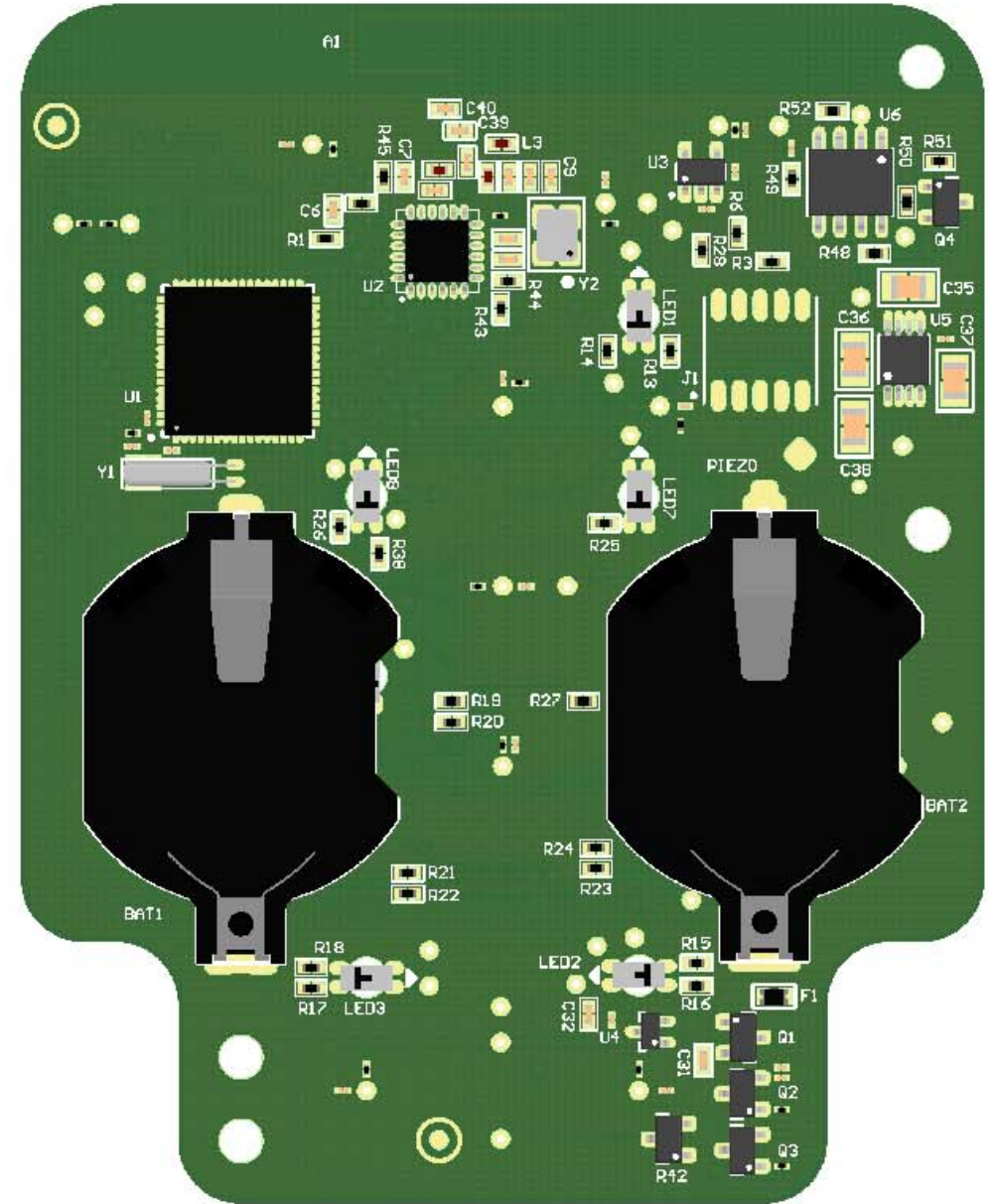
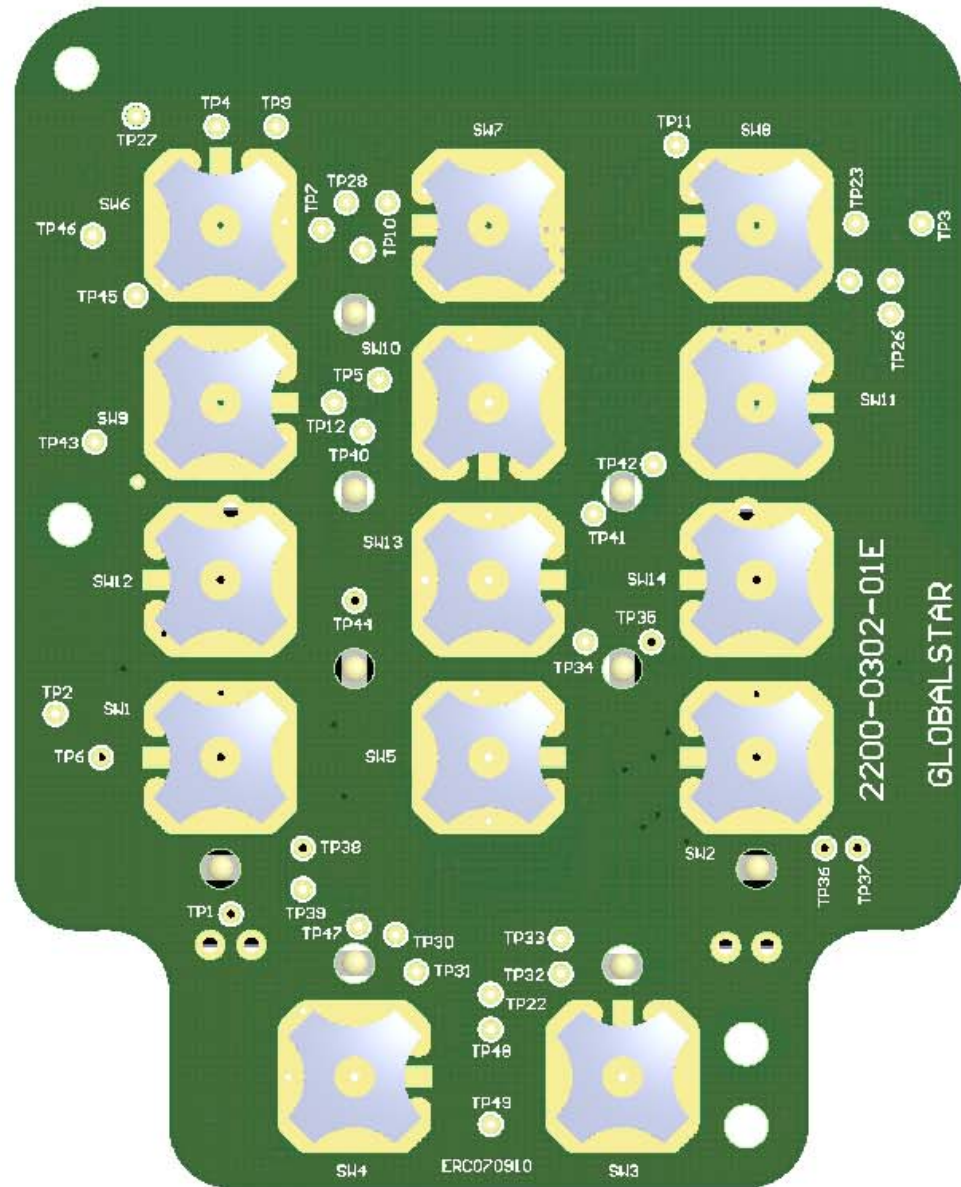


CLICK ICON TO ACTIVATE
3D PDF OF CURRENT ASSEMBLY

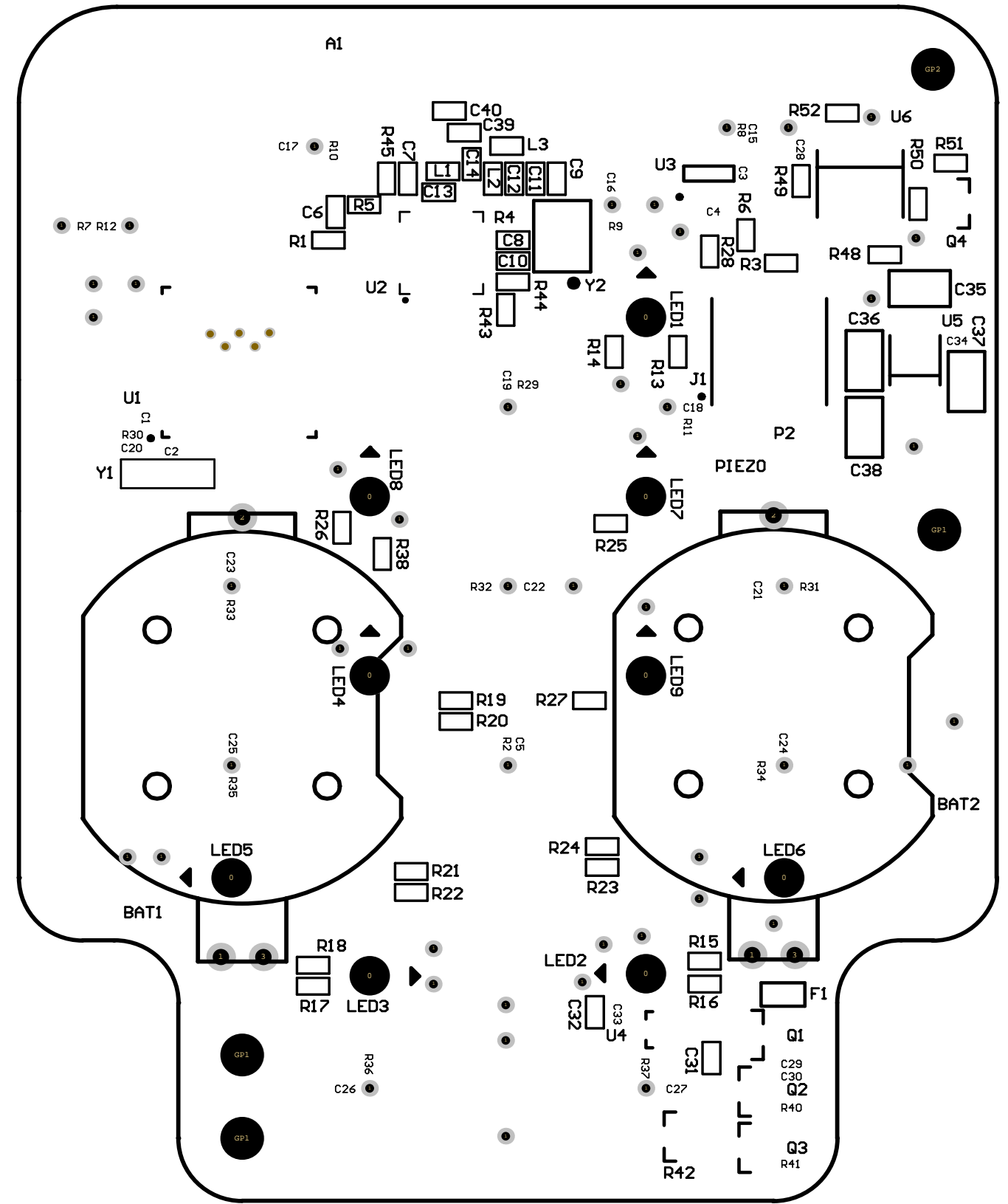
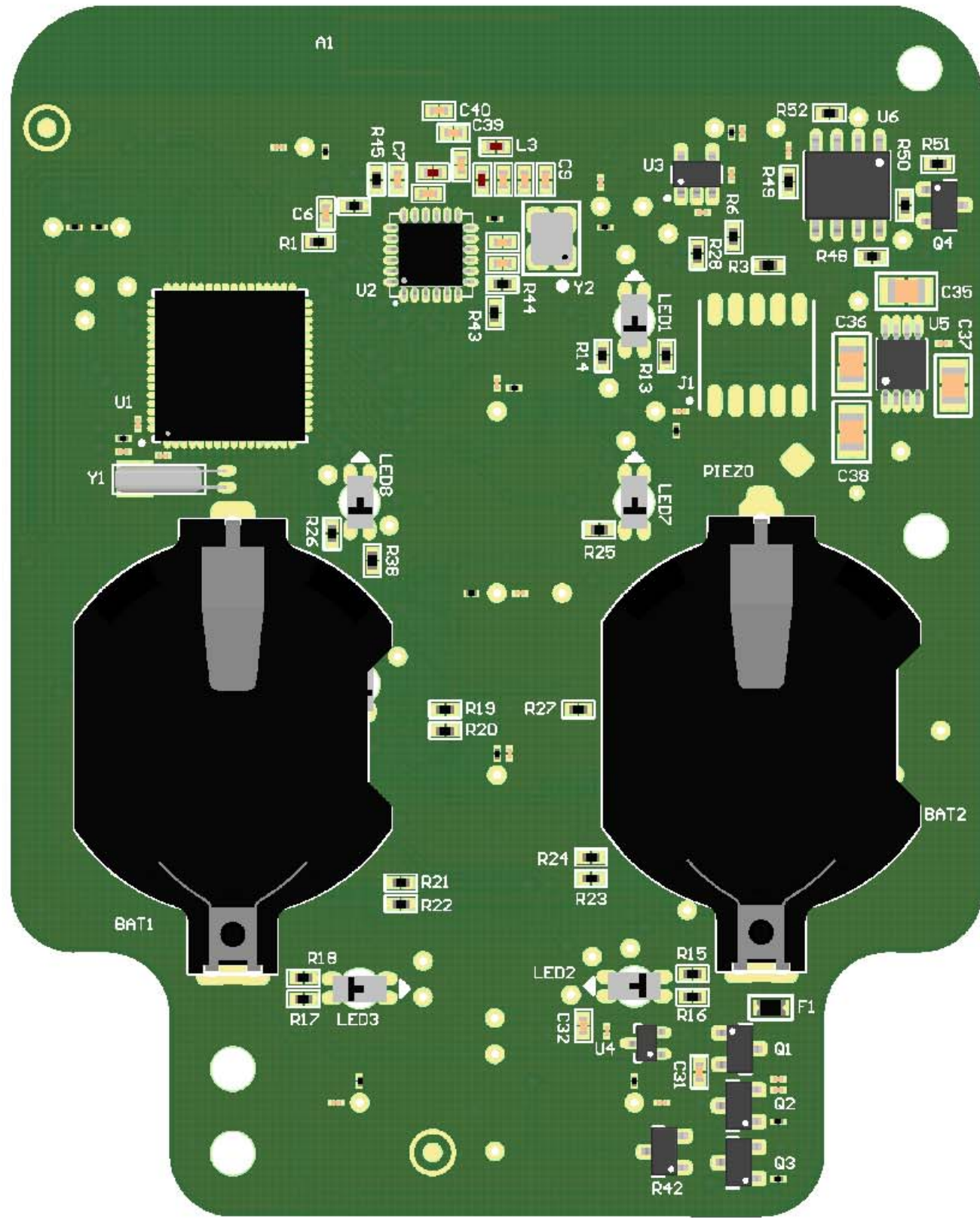
REV:	DESCRIPTION / ECN #:	ENGR 1:	ENGR 2:	DOC REL:	DATE:
A	INITIAL RELEASE			SCOTT HOJEM	09/14/10
B	ECN #660			SCOTT HOJEM	11/02/10



CONFIDENTIAL:

THE INFORMATION CONTAINED IN THIS DRAWING IS THE SOLE PROPERTY OF AXONN, LLC. ANY REPRODUCTION IN PART OR AS A WHOLE WITHOUT THE WRITTEN PERMISSION OF AXONN, LLC IS PROHIBITED.

		UNLESS OTHERWISE SPECIFIED:		Proj Engr: DAVE PETTIT Date: 08/26/10		Drawn By: ROGER CASTRO Date: 08/26/10		300 HOLIDAY SQUARE BLVD Covington, LA 70433 985-355-1514		
MATERIAL		DIMENSIONS ARE IN INCHES TOLERANCES: FRACTIONAL ± ANGULAR: MACH ± BEND ± TWO PLACE DECIMAL ± THREE PLACE DECIMAL ±		Engr 1: ROGER CASTRO Date: 08/26/10		Prod Ctr: LOUIE XU Date: 08/26/10		TITLE: ASSEMBLY, PCB HUG KEYPAD		REV B
FINISH				Engr 2:		Doc Ctr: SCOTT HOJEM Date: 08/26/10		SIZE B	DWG. NO. 2300-0302	Sheet 1 of 3



		300 HOLIDAY SQUARE BLVD Covington, LA 70433 985-335-1514	
		TITLE: ASSEMBLY, PCB HUG KEYPAD	
SIZE B	DWG. NO. 2300-0302	Sheet 2	of 3
		REV B	

8 7 6 5 4 3 2 1

D

D

C

C

B

B

A

A

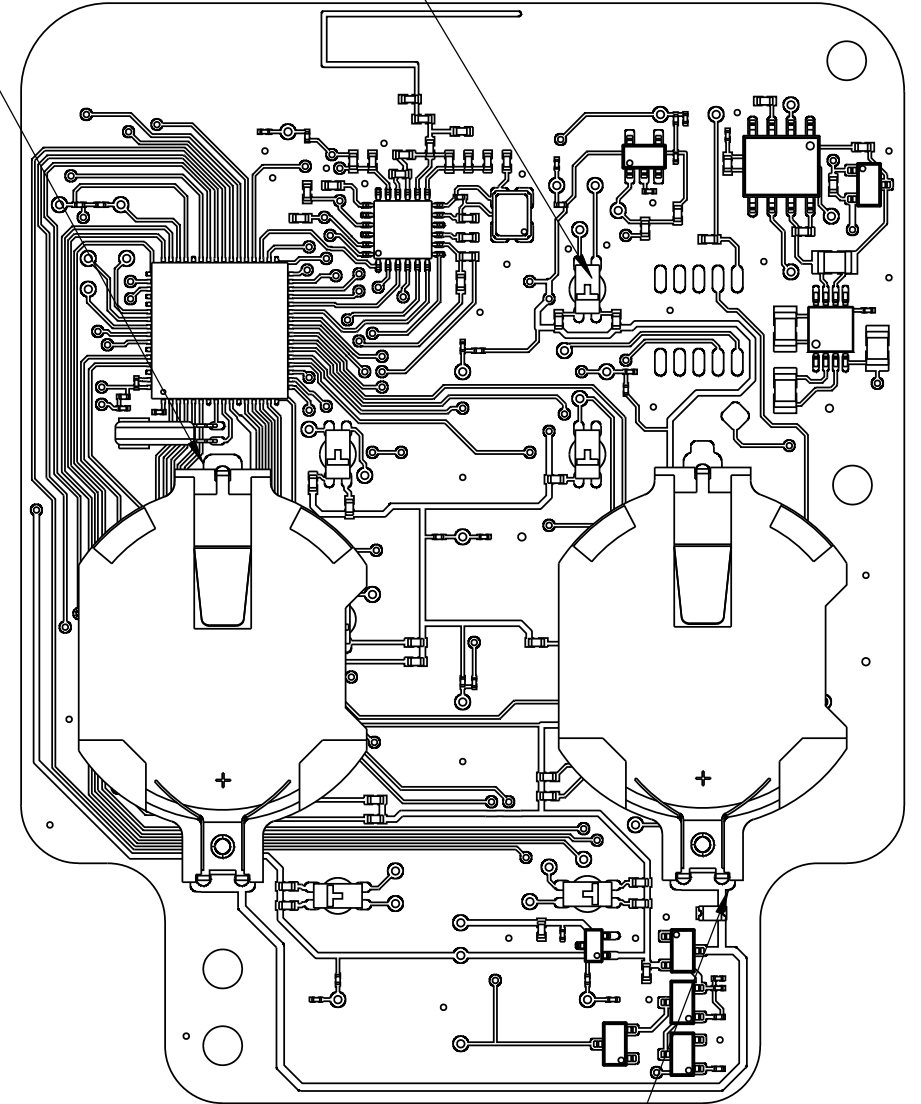
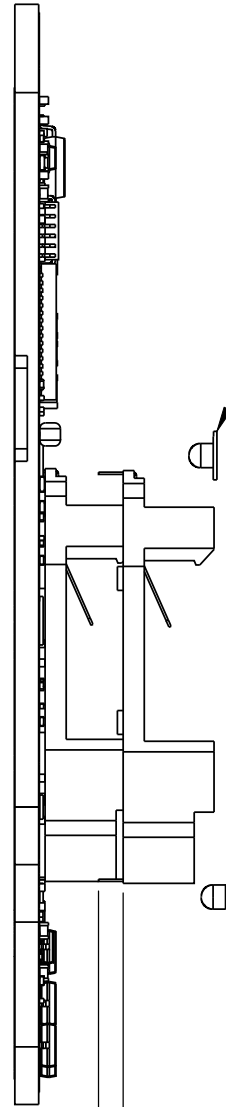
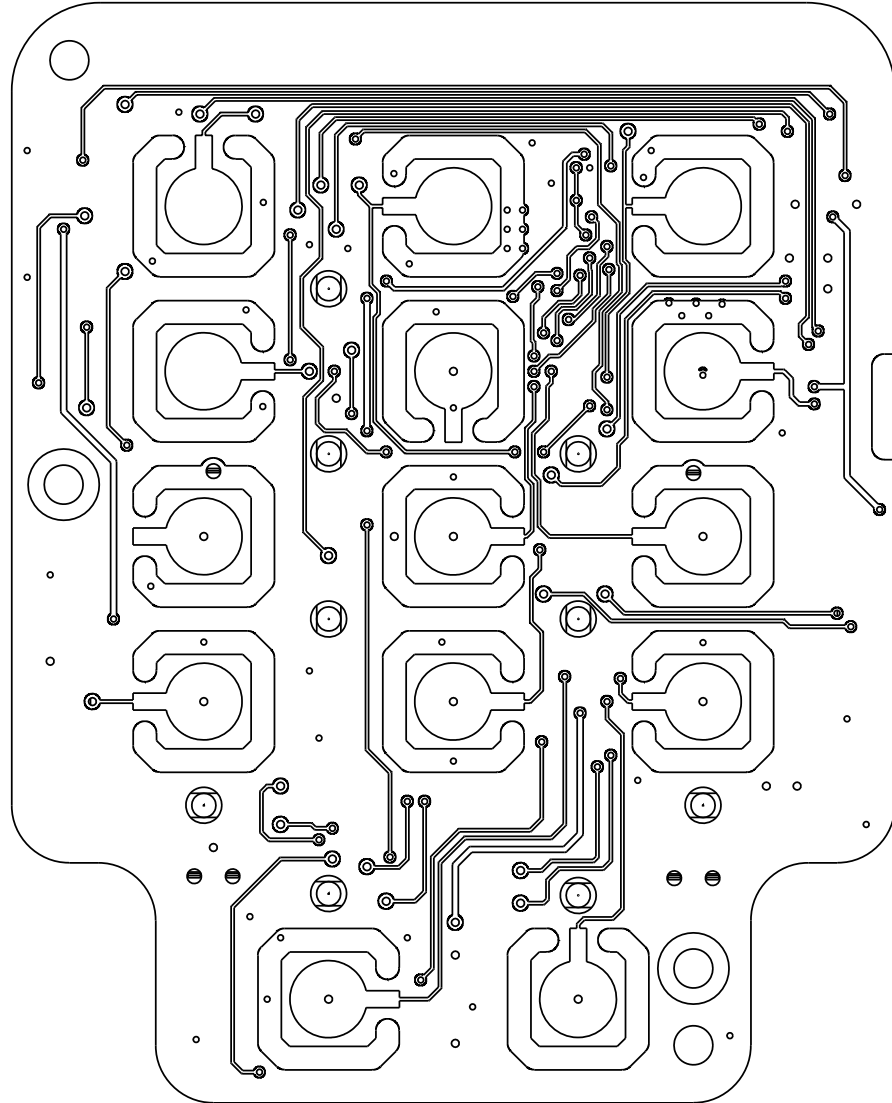
OBSERVE LED ORIENTATION

SOLDER ALL BATTERY CONTACTS THIS SIDE ONLY

INSERT ALL LED LENS INTO HOLE ON PCB

SOLDER ALL BATTERY CONTACTS THIS SIDE ONLY.

.064", TRIM BATTERY HOLDER LEAD LENGTH AS SHOWN.



		300 HOLIDAY SQUARE BLVD Covington, LA 70433 985-335-1514	
		TITLE: ASSEMBLY, PCB HUG KEYPAD	
SIZE B	DWG. NO. 2300-0302	Sheet 3	of 3

8 7 6 5 4 3 2 1