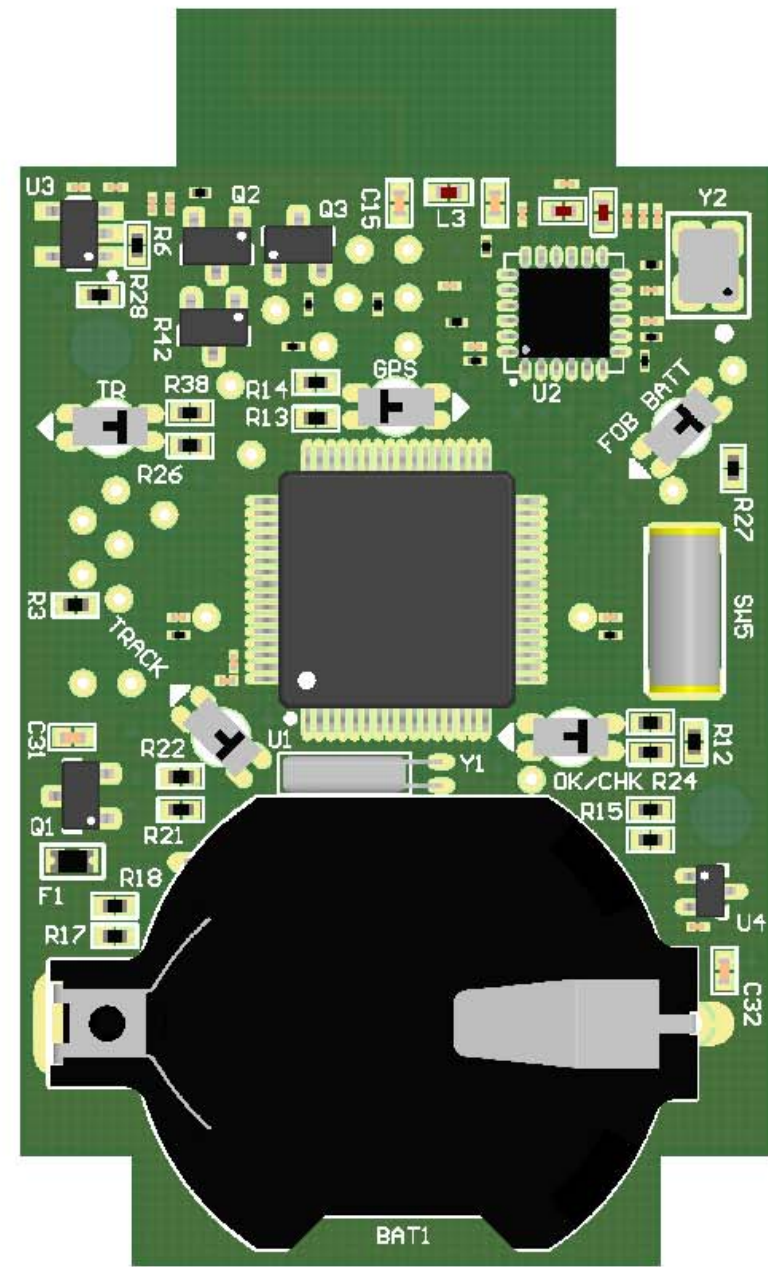
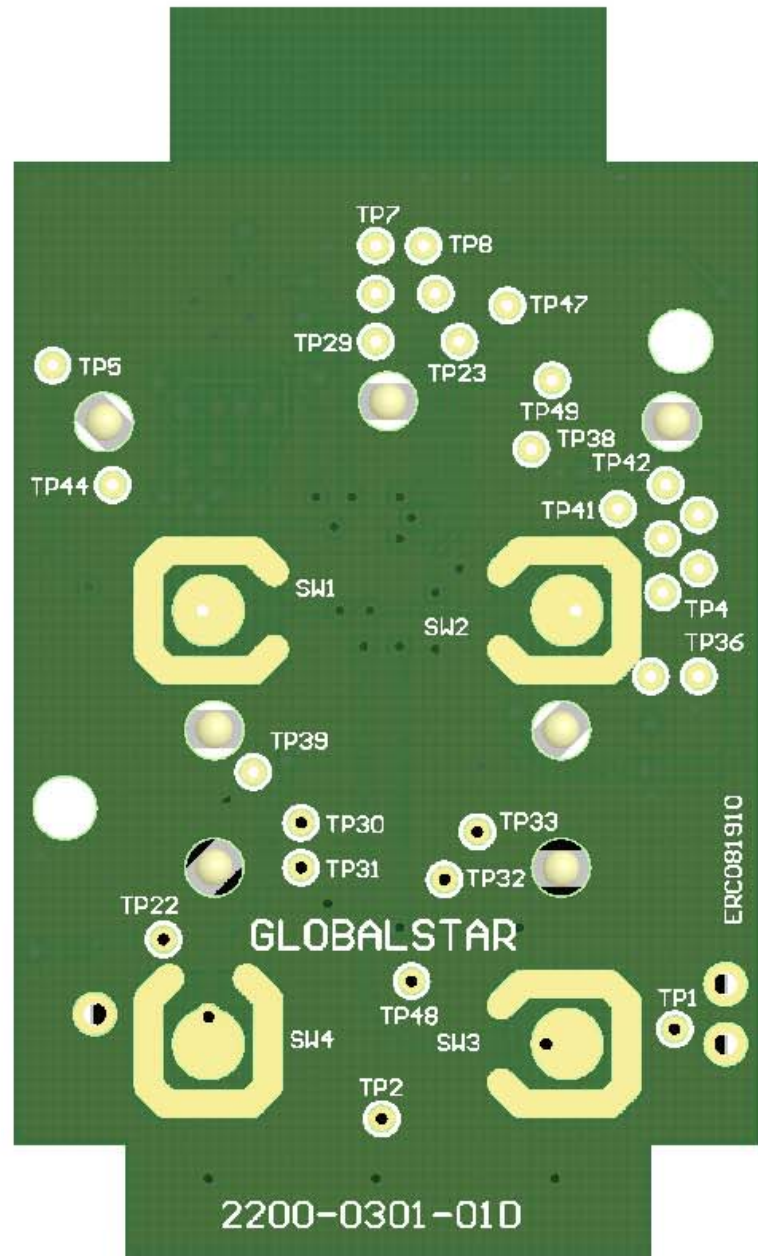



CLICK THIS ICON TO ACTIVATE
3D PDF OF THIS ASSEMBLY

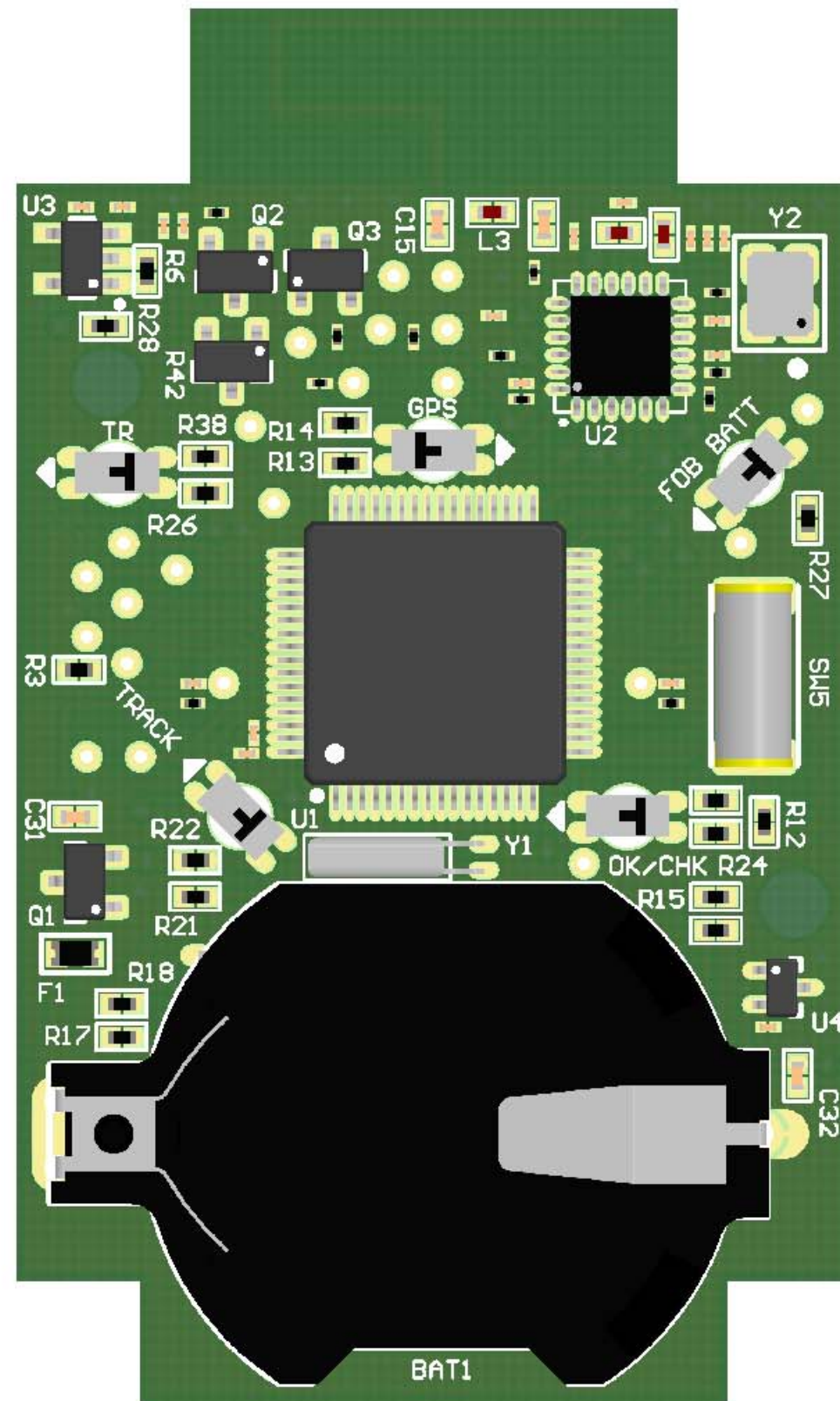
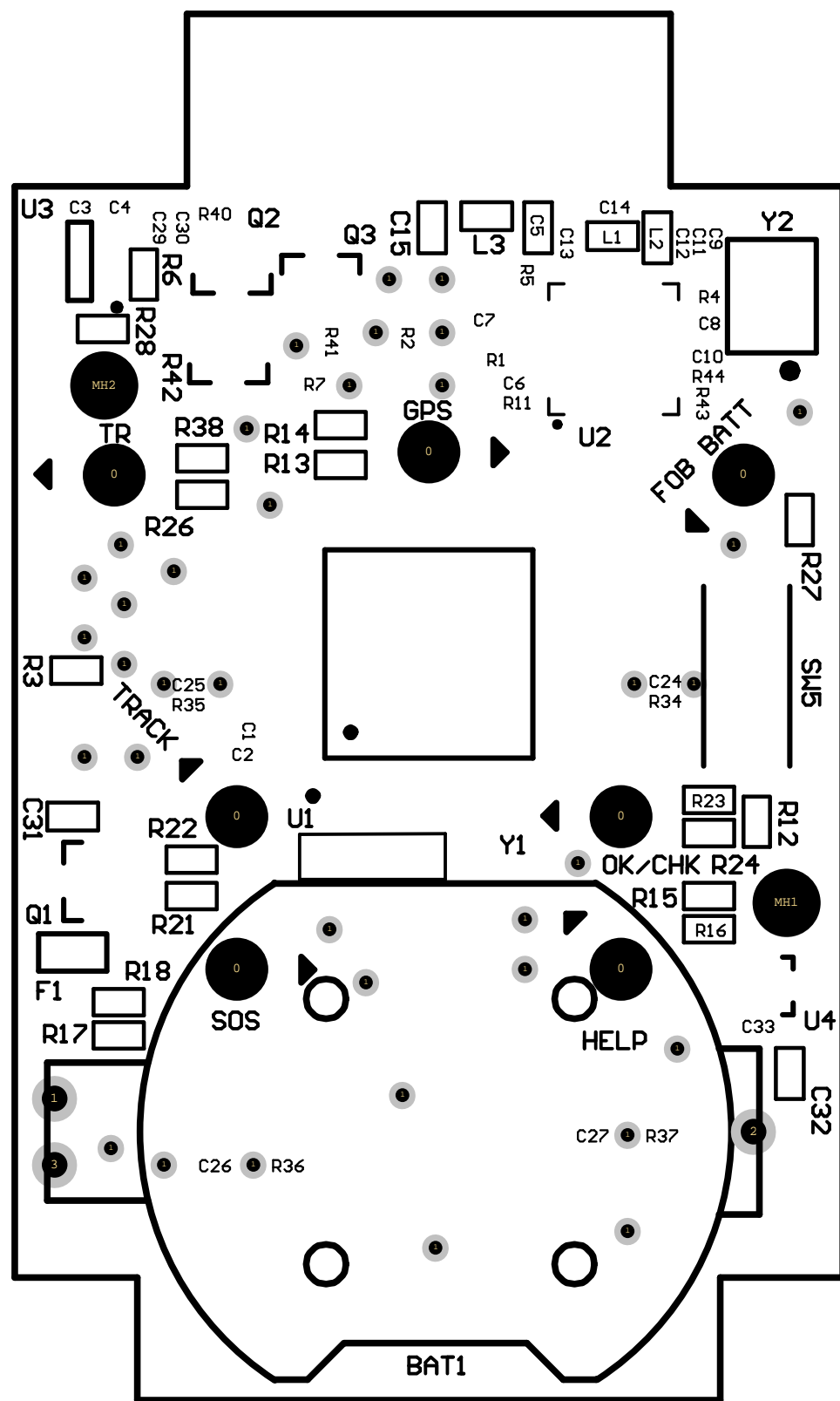
REV:	DESCRIPTION / ECN #:	ENGR 1:	ENGR 2:	DOC REL:	DATE:
A	INITIAL RELEASE			SCOTT HOJEM	09/14/10
B	ECN #660			SCOTT HOJEM	11/01/10



CONFIDENTIAL:

THE INFORMATION CONTAINED IN THIS DRAWING IS THE SOLE PROPERTY OF AXONN, LLC. ANY REPRODUCTION IN PART OR AS A WHOLE WITHOUT THE WRITTEN PERMISSION OF AXONN, LLC IS PROHIBITED.

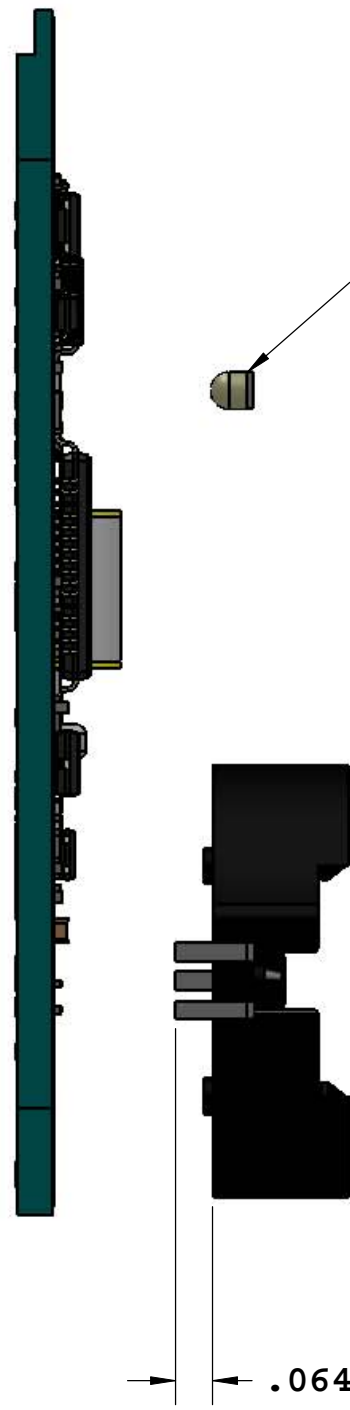
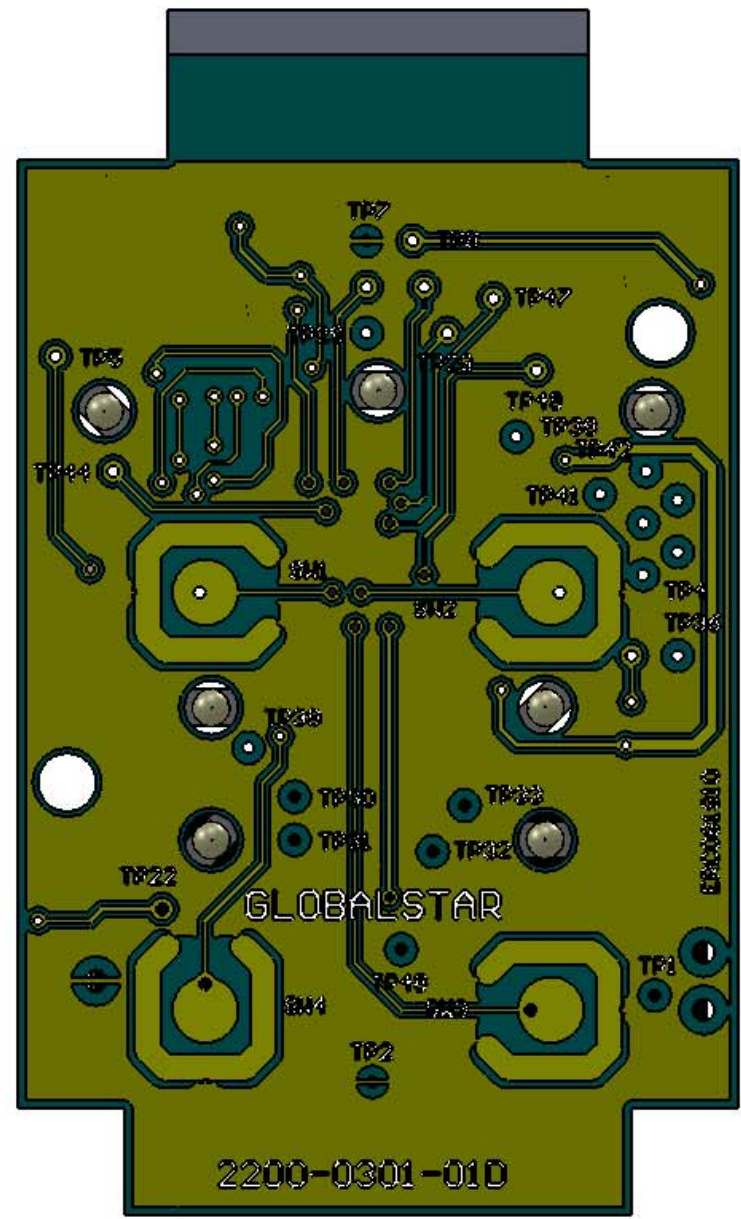
		UNLESS OTHERWISE SPECIFIED:		Proj Engr: Dave Pettit		Date: 08/26/10		Drawn By: Roger Castro		Date: 08/26/10		 300 HOLIDAY SQUARE BLVD Covington, LA 70433 985-355-1514		
MATERIAL		DIMENSIONS ARE IN INCHES TOLERANCES: FRACTIONAL ± ANGULAR: MACH ± BEND ± TWO PLACE DECIMAL ± THREE PLACE DECIMAL ±		Engr 1: Roger Castro		Date: 08/26/10		Prod Ctrl: Louie Xu		Date: 08/26/10		TITLE: ASSEMBLY, PCB HUG FOB		
FINISH				Engr 2:		Date:		Doc Ctrl: Scott Hojem		Date: 08/26/10		SIZE: B	DWG. NO.: 2300-0301	Sheet 1 of 3



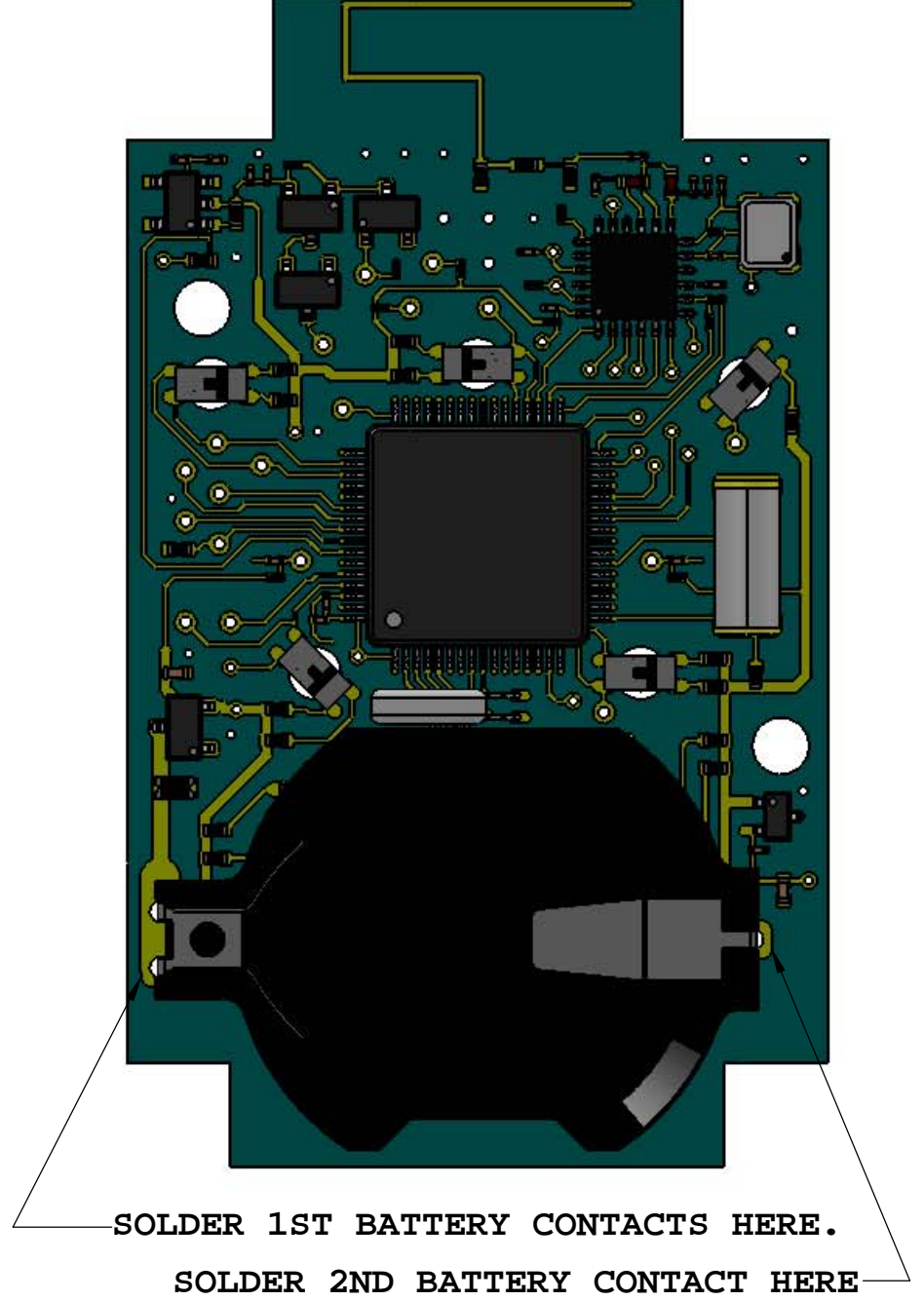
		300 HOLIDAY SQUARE BLVD Covington, LA 70433 985-335-1514	
		TITLE: ASSEMBLY, PCB HUG FOB	
SIZE B	DWG. NO. 2300-0301	Sheet 2	of 3

8 7 6 5 4 3 2 1

D
C
B
A



INSTALL LED LENS
 INTO HOLE IN PCB
 FROM THIS SIDE



MOUNT BATTERY HOLDER FROM THIS SIDE
 AFTER TRIMMING LEADS AS SHOWN ABOVE.
 SOLDER COMPONENT FROM THIS SIDE ONLY.

		300 HOLIDAY SQUARE BLVD Covington, LA 70433 985-335-1514	
		TITLE: ASSEMBLY, PCB HUG FOB	REV B
SIZE B	DWG. NO. 2300-0301	Sheet 3	of 3

8 7 6 5 4 3 2 1