

ITEM NO.	PART NUMBER	DESCRIPTION	QTY.
1	35670453	LABEL BLANK 76MM X 48MM	1
2	0008875	RIBBON	AR

DATE	STG	REV	N/P	CHG	ZONE	REVISION HISTORY	AUTH	DR	APVD	APVD
10MY22	R	A				PRODUCTION RELEASED	002828	JG	EW	JM
25JL22	R	B				P/N IN BOM WAS INCORRECT (355912B01, CORRECTED)	002849	JG	EW	JM
18AU22	R	C				ADDED CUSTOMER P/N, APTIV P/N, S/ CODE ADDED REF DIMS	002888	JG	EW	JM
03NO22	R	D				REVISED LABEL REQ, REF NOTES	108065 9597	JG	EW	JM
13AP23	R	E				E16 NOTE 4, 5 COMPLETELY NEW NOTES C16 NOTE 6, ADDED CCCCCCCCCC C16 NOTE 7 ADDED PRRPPPPR B16 VALUE WAS B CHARACTER P/N DEFINED ON PRODUCT FINAL ASSEMBLY PRINT A16 NOTE 12 WAS PARTS MUST BE APPROVED..... H8 ADDED NOTE 15 "HORIZONTAL LINE" ADDED APTIV SERVICES US, LLC	108066 1035	JG	EW	JM
12OC23	R	F				H9 ADDED MODEL: WCPMA REMOVED MOPAR OMEGA "M" ADDED NOTE: THIS VALUE IS DIFFERENT FOR THE PRODUCT VARIANTS "WCPM1" AND "WCPM3" TO NOTES 6 & 7	108066 2757	JG	EW	JM
09NO23	R	G				H9 MODEL: WCPMA-TX WAS WCPMA	108066 3023	JG	EW	JM
04JA24	R	H				C16 NOTE 10 WAS HUMAN.....1.5MM HEIGHT A16 ADDED NOTES 16-18, AND Q1 SYMBOL TO LABEL	10806 3476	JG	EW	JM
XXXXX	R	I				A16 REMOVED NOTE: ISED - IC ID SECTION G8 REMOVED SYMBOL ISED FROM LABEL ADDED COUNTRIES TO LABEL NOTES FOR ADDED COUNTRIES ADDED SECOND PAGE ADDED NOTES 18-31 TO SECOND PAGE	XXXXXX XXXX	JG	EW	JM

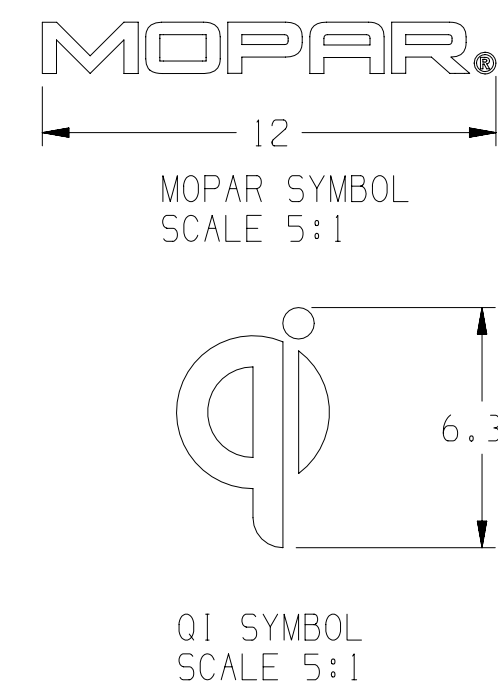
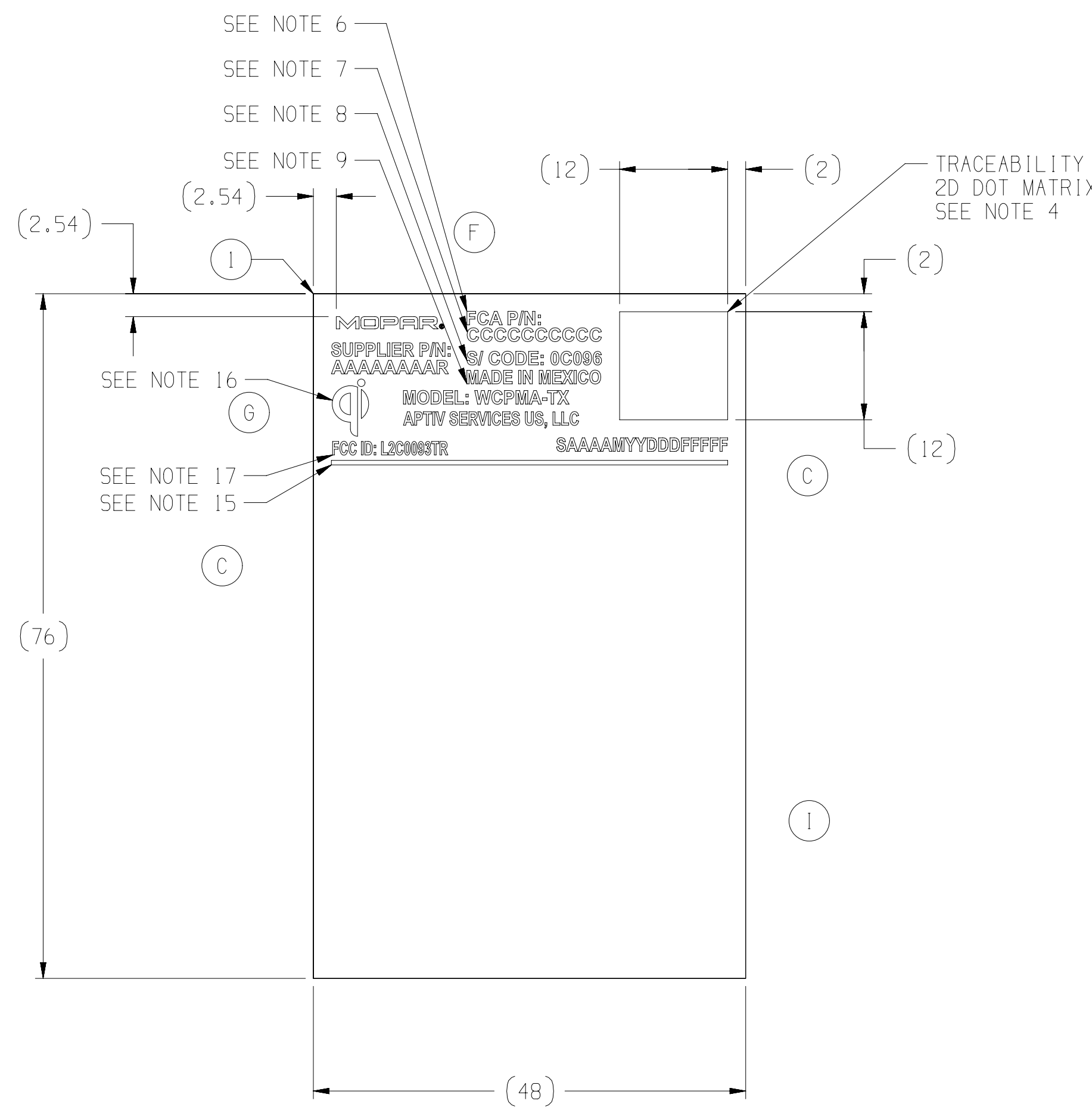
NOTES:

- ALL CHARACTERS, TEXT, AND SYMBOLS SHALL BE POSITIONED APPROXIMATELY AS SHOWN. CHARACTERS SHOWN ARE FOR REFERENCE ONLY. THERE MUST BE A 2MM KEYPART ZONE BETWEEN THE LABEL AND ANY PRINTED TEXT OR GRAPHICS.
- LABEL COLOR SHALL BE BLACK TEXT AND GRAPHICS ON A WHITE BACKGROUND. LABEL PRINTER OF 600 DPI SHALL BE USED (VERIFY WITH PML).
- DATA STRUCTURE CHARACTERISTIC REQUIREMENTS:
MINIMUM REQUIREMENTS OF THE DATA STRUCTURE/CHARACTERISTICS TO GUARANTEE A READABLE/SCANNABLE SYMBOL:

CODE/ERROR CORRECTION	ECC200 (NOTE 1)
FORMAT	SQUARE
DIMENSION X/Y FORM/RESOLUTION	>0.4MM
DIMENSION QUIET ZONE	2 CELLS PER SIDE
POLARITY	BLACK ON WHITE
TRANSPORT CAPACITY	> 49 ALPHANUMERIC CHARACTERS
1 PRINT QUALITY	ISO/IEC 15415: >3.0 (NOTE 2)

NOTE 1) ADHERE TO ECC200 ERROR CORRECTION LEVEL FOR DATA MATRIX REFERENCED A1AG B 4 ISSUE 03
NOTE 2) ISO/IEC 15415 - A GENERAL READABILITY STANDARD TO EVALUATE 2D DATA MATRIX SYMBOL PRINT QUALITY

- 2D MATRIX SECTION:
THE 2D DATA MATRIX SHOULD PRESENT INFORMATION AS A SINGLE STRING OF CHARACTERS WITH NO SPACES OR DEAD ZONES, 2MM WHITE SPACE REQUIRED ON ALL 4 SIDES OF 2D DATA MATRIX.
CONTENTS TO BE:
[1]> ⁰6⁰PCCCCCCCCC⁰!PAAAAAAA⁰SAAAAAYDDDDFFFF⁰₀₁
- CHARACTERS AS SHOWN
06: NUMBERS SHOWN
!: RECORD SEPARATOR (ASCII 30)
!: GROUP SEPARATOR (ASCII 29)
!: END OF TRANSMISSION (ASCII 04)
- P: "P", CUSTOMER PART NUMBER IDENTIFIER
CCCCCCCC: CUSTOMER PN (SEE NOTE #6)
!P: "1P", APTIV PART NUMBER IDENTIFIER
AAAAAAA: APTIV P/N AND REVISION LEVEL (SEE NOTE #7)
S: SERIAL NUMBER IDENTIFIER
AAAAAYDDDDFFFF: SERIAL NUMBER (SEE NOTE #5)
- SERIAL NUMBER SECTION: SAAAAAYDDDDFFFF
VALUE TO BE:
S: SERIAL NUMBER IDENTIFIER
AAAA: LAST 4 DIGITS OF THE APTIV P/N DEFINED ON PRODUCT FINAL ASSEMBLY PRINT
M: "M", APTIV SUPPLIER CODE FOR MATAMOROS MEXICO PLANT
YY: YEAR- LAST 2 DIGITS OF YEAR OF MANUFACTURE (IE FOR 2023 USE "23")
DDD: JULIAN DATE
FFFF: SEQUENCE NUMBER- 5 DIGIT SERIAL CALCULATE BY SOFTWARE DAILY RESET.
THIS IS BASE 10, 00001-99999 AND RESETS AT JULIAN DATE CHANGE.
- CUSTOMER P/N SECTION: CCCCCCCCC
VALUE: 10 CHARACTER CUSTOMER P/N DEFINED ON PRODUCT FINAL ASSEMBLY PRINT
NOTE: THIS VALUE IS DIFFERENT FOR THE PRODUCT VARIANTS "WCPM1" AND "WCPM3).
- APTIV P/N SECTION: AAAAAAAA
VALUE: 8 CHARACTER APTIV P/N FOLLOWED BY 1 CHARACTER REVISION LEVEL DEFINED ON PRODUCT FINAL ASSEMBLY PRINT
NOTE: THIS VALUE IS DIFFERENT FOR THE PRODUCT VARIANTS "WCPM1" AND "WCPM3).
- S CODE SECTION:
VALUE: 0C096
- COUNTRY OF ORIGIN SECTION:
VALUE: MADE IN MEXICO
- HUMAN READABLE TEXT TO BE ARIAL NARROW BOLD OR EQUIVALENT AND 1.5MM HEIGHT UNLESS OTHERWISE SPECIFIED.
- LABEL SHALL MEET PERFORMANCE REQUIREMENTS FOR NON-EXPOSED INTERIOR LABELS....
- PRINTED SAMPLE PARTS MUST BE APPROVED BY APTIV ENGINEERING.
- LEAD (P6) FREE (LESS THAN 0.1% HOMOGENEOUS MATERIAL).
- APTIV ANTING, REV A:01, B:02, ETC.
- QUALITY LINE: SOLID LINE OF 0.50MM THICKNESS TO BE PRINTED PERPENDICULAR TO PRINTER FEED (HORIZONTAL IN DRAWING VIEW) FOR VISUAL DETECTION OF BAD PRINT ELEMENTS.
- WPC LOGO - Q1 SYMBOL
SIZE 6.35MM MINIMUM HEIGHT
- FCC ID SECTION:
VALUE: "FCC ID: L200093TR"
FONT: ARIAL NARROW FONT (CAPITALIZED WHERE APPLICABLE)
HEIGHT: 1.00MM



PRIMARY
 INNING
 BATTER
 AWAY

DO NOT USE FOR TOOLING
 NOR DISTRIBUTION

ECO CAN TBD

LINE DRAWN THROUGH A PART NUMBER INDICATES THAT PHYSICAL PARTS ARE NOT AVAILABLE FOR ORDERING.
PART NUMBERS THAT DO NOT HAVE A LINE PRESENT INDICATE THAT PHYSICAL PARTS ARE AVAILABLE FOR ORDERING.
CONTACT APTIV SALES TO ASSURE AVAILABILITY OF PARTS.
DWG TYPE: PART DRAWING
STYLE: [Symbol]
VOLUME 10M1: [Symbol]
DISTR CODE: [Symbol]
UNLESS OTHERWISE SPECIFIED
THIS DOCUMENT IS IN ACCORDANCE WITH ASME Y14.5-2009. SEE SUPPLY ENGINEERING DESIGN TOLERANCE UNLESS OTHERWISE SPECIFIED
ALL DIMENSIONS ARE IN MILLIMETERS
REFERENCE: WEIGHT: 0.10g
DIMENSIONAL RANGE (MM) CHART
FROM 0 TO 30 TOLERANCE ±0.13
FROM 30 TO 70 TOLERANCE ±0.25
FROM 70 TO 100 TOLERANCE ±0.38
FROM 100 TO 150 TOLERANCE ±0.51
FROM 150 TO 200 TOLERANCE ±0.64
FROM 200 TO 300 TOLERANCE ±0.76
FROM 300 TO 500 TOLERANCE ±1.02
FROM 500 TO 1000 TOLERANCE ±1.27
ANGULAR TOLERANCE: ±2°
THIRD ANGLE PROJECTION
DO NOT SCALE USE MATH DATA

• APTIV •

CONNECTION SYSTEMS
WARREN, OH

COPYRIGHT APTIV. ALL RIGHTS RESERVED.
THIS DRAWING IS THE PROPERTY OF APTIV AND CONTAINS APTIV CONFIDENTIAL INFORMATION. THE REPRODUCTION, DISTRIBUTION AND UTILIZATION OF THIS DOCUMENT OR ITS RELATED CAD DATA, AS WELL AS COMMUNICATION OF ANY CONTENTS TO OTHERS, WITHOUT EXPRESS AUTHORIZATION, IS PROHIBITED.

DATE	DATE
DR: J. GUZDEK 10MY22	
APVD1: E. WALLACE 10MY22	
APVD2: J. MECCA 10MY22	
APVD3: J. LIVINGSTON 10MY22	
APVD4:	
APVD5:	

APVD5: SUBSTANCES OF CONCERN AND RECYCLED CONTENT PER APTIV STANDARD 06-2017 FOR ISO 1101:2004 RECYCLATION REQUIREMENTS. (0949001)

SEE BOM

DRAWING NAME: DT WCPM LABEL

DRAWING NUMBER: 35616611

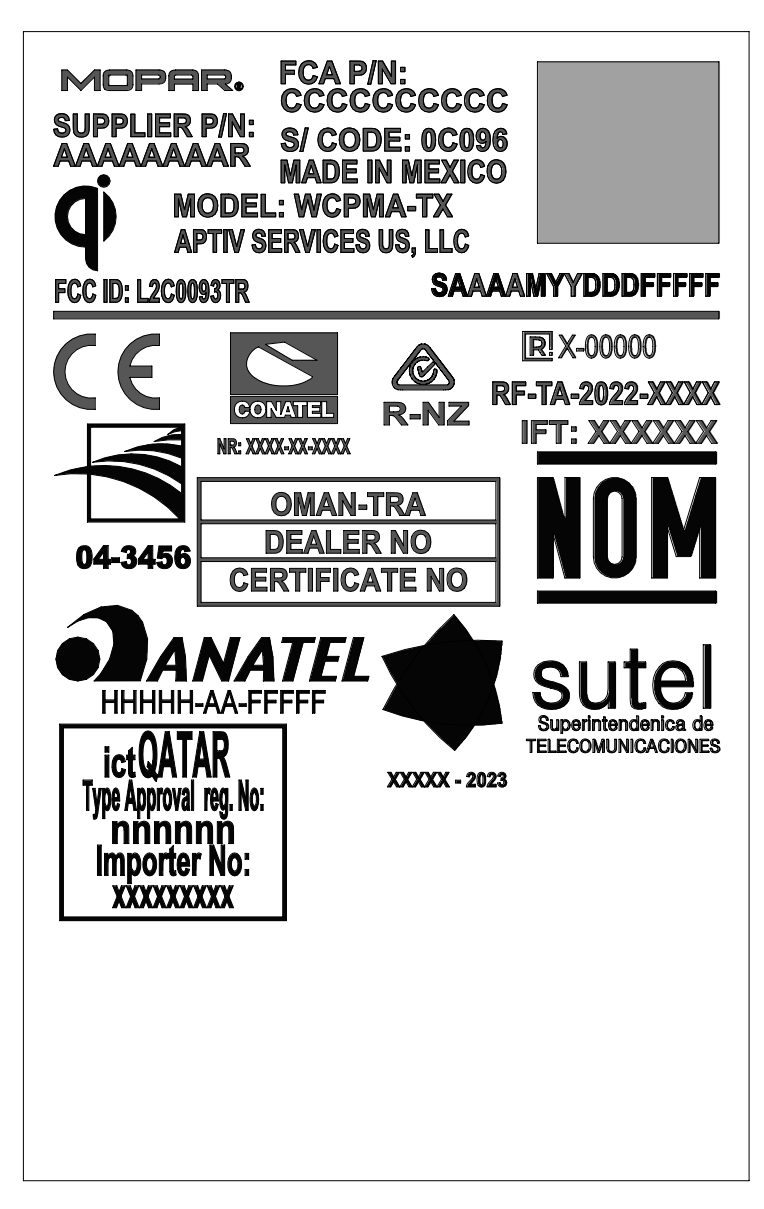
SIZE	SCALE	FRAME NO	SHEET NO	STG	REV	N/P
A0	2:1	1	1	1	R	1

DATE	STG	REV	N/P	CHG	ZONE	REVISION HISTORY	AUTH	DR	APVD	APVD
10MY22	R	A				PRODUCTION RELEASED	002828	JG	EW	JM
25JL22	R	B				P/N IN BOM WAS INCORRECT (355912B01), CORRECTED	002849	JG	EW	JM
18AU22	R	C				ADDED CUSTOMER P/N, APTIVE P/N, S/ CODE ADDED REF DIMENSIONS	002888	JG	EW	JM
03NO22	R	D				REVISED LABEL REQ, REF NOTES	108065 9597	JG	EW	JM
13AP23	R	E				E16 NOTE 4, 5 COMPLETELY NEW NOTES C16 NOTE 6, ADDED CCCCCCCCCC C16 NOTE 7 ADDED PRRPPPPPP B16 VALUE WAS B CHARACTER P/N DEFINED ON PRODUCT FINAL ASSEMBLY PRINT A16 NOTE 12 WAS PARTS MUST BE APPROVED..... A16 ADDED NOTE 15 "HORIZONTAL LINE" H8 ADDED APTIV SERVICES US, LLC	108066 1035	JG	EW	JM
12OC23	R	F				H9 ADDED MODEL: WCPMA REMOVED MOPAR OMEGA "M" ADDED (NOTE: THIS VALUE IS DIFFERENT FOR THE PRODUCT VARIANTS "WCPM1" AND "WCPM3" TO NOTES 6 & 7	108066 2757	JG	EW	JM
09NO23	R	G				H9 MODEL: WCPMA-TX WAS WCPMA	108066 3023	JG	EW	JM
04JA24	R	H				C16 NOTE 10 WAS HUMAN.....1.5MM HEIGHT A16 ADDED NOTES 16 - 18, AND O1 SYMBOL TO LABEL	108066 3476	JG	EW	JM
XXXXXX	R	I				A16 REMOVED SYMBOL: ISED - IC ID SECTION G8 REMOVED SYMBOL ISED FROM LABEL ADDED COUNTRIES TO LABEL NOTES FOR ADDED COUNTRIES ADDED SECOND PAGE ADDED NOTES 18-31 TO SECOND PAGE	XXXXXX XXXX	JG	EW	JM

PART LABEL DIMINIZING ARIARY

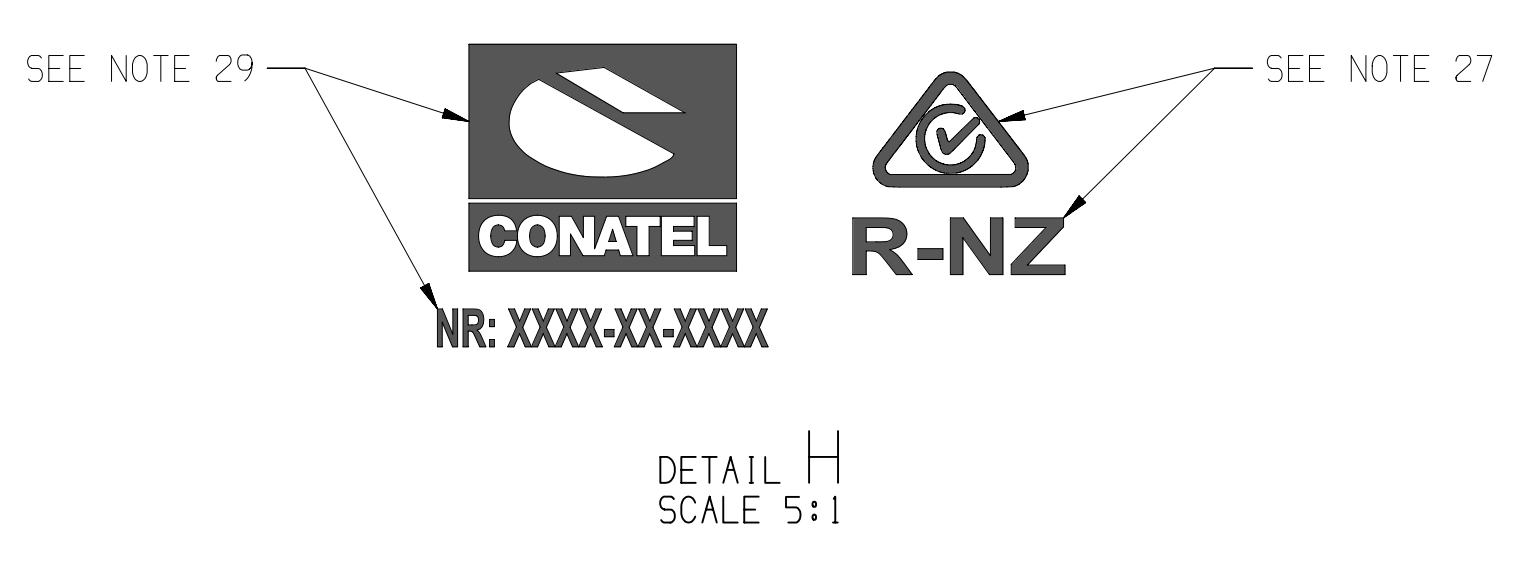
DO NOT USE FOR TOOLING OR DISTRIBUTION

ECO CAN TBD



SEE NOTE 20
SEE NOTE 26
SEE NOTE 24
SEE NOTE 21
SEE NOTE 30

SEE NOTE 19
SEE NOTE 22
SEE NOTE 25
SEE NOTE 28
SEE NOTE 23



- 18. HUMAN READABLE TEXT TO BE ARIAL NARROW BOLD OR EQUIVALENT FOR COUNTRIES LISTED.
- 19. ARGENTINA - RAMATEL
- 20. BARBADOS, EL SALVADOR, PARAGUAY - FCC
- 21. BRAZIL - ANATEL
- 22. CAMBODIA - TRC CAMBODIA
- 23. COSTA RICA - SUTEL
- 24. LEBANON - TRA LEBANON & RTE 1
- 25. MEXICO - IFT & NOM
- 26. NEW CALEDONIA, QATAR - CE
- 27. NEW ZELAND - RCM & R-NX
- 28. OMAN - TRA OMAN
- 29. PARAGUAY - CONATEL
- 30. QATAR - ICTQATAR
- 31. UNITED ARAB EMIRATES - TORA

APTIV CONNECTION SYSTEMS WARREN, OH COPYRIGHT APTIV. ALL RIGHTS RESERVED. THIS DRAWING IS THE PROPERTY OF APTIV AND CONTAINS APTIV CONFIDENTIAL INFORMATION. THE REPRODUCTION, DISTRIBUTION AND UTILIZATION OF THIS DOCUMENT OR ITS RELATED CAD DATA, AS WELL AS COMMUNICATION OF ANY CONTENT TO OTHERS, WITHOUT EXPRESS AUTHORIZATION, IS PROHIBITED.	
DATE: 10MY22 DR: J. GUZDEK APVD1: E. WALLACE APVD2: J. MECCA APVD3: J. LIVINGSTON APVD4:	DATE: 10MY22 DATE: 10MY22 DATE: 10MY22 DATE: 10MY22
SUBSTANCES OF CONCERN AND RECYCLED CONTENT PER APTIV (10949001)	
SEE BOM	
DRAWING NAME: DT WCPM LABEL	
DRAWING NUMBER: 35616611	
WEIGHT: 0.10g	THIRD ANGLE PROJECTION
UNLESS OTHERWISE SPECIFIED THIS DOCUMENT IS IN ACCORDANCE WITH ASME Y14.5-2009. SEE APTIV ENGINEERING DESIGN STANDARD 06-2017 FOR ISO 1101:2004 RECONCILIATION REQUIREMENTS.	DO NOT SCALE USE MATH DATA
ALL DIMENSIONS ARE IN MILLIMETERS	SIZE: A0 SCALE: 2:1 FRAME NO: 1 OF 1 SHEET NO: 2 OF 2 STG REV: R 1